



# Sapporo

Photo: Sean Pavone/Shutterstock.com



Sean Pavone/Shutterstock.com



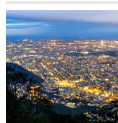
Jeerawut Rityakul/Shutterstock.com



Sean Pavone/Shutterstock.com

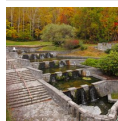
With its rich natural landscape, stunning scenery, and distinctive seasons, Sapporo would satisfy the explorer in any one of us. The capital of Hokkaidō, the most northern and second-largest island of Japan, was established in 1868; its vast open wilderness backed by magnificent mountains was highly appealing to the early settlers back then, just as much as to any visitor today.

## Featured



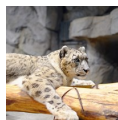
### Mt. Moiwa

With its 530 meters, Mt. Moiwa is the highest landmark in Sapporo. Take the ...



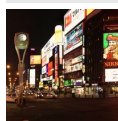
### Sapporo Art Museum

Sapporo Art Museum is a great spot for both outdoors lovers and art fanatics...



### Sapporo Maruyama Zoo

The Maruyama Zoo covers a vast area and has an amazing variety of animals an...



### Susukino

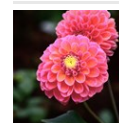
This bustling part of the city becomes alive at night. Restaurants, entertai...



### Takino Suzuran Hillside Na...

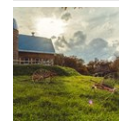
There are a lot of activities for both children and adults at Takino Suzaran...

## Top 5



### Hokkaido University Botani...

Visit the botanical gardens on the outskirts of the city. There are plenty o...



### Historical Village of Hokkaido

The Historical Village of Hokkaido has an outdoor reconstruction of Hokkaido...



### Tokei-dai - Sapporo Clock ...

This clock tower is a lasting reminder of Sapporo's comparatively recent pas...



### Former Hokkaido Government...

This red brick building with its characteristic octagonal dome is



### Sapporo TV Tower

The Sapporo TV Tower is now used as an observation tower, offering a fantast...

## THE CITY



*Prasit Rodphan/Shutterstock.com*

It would be hard to loose yourself in modern Sapporo, as it is structured by an American style grid system, with streets named and numbered according to the points of the compass. Odori Park, Sapporo's "Central Park", runs through the centre of the city, dividing the North from the South. You will find that art is heavily present in this comparatively modern city.

The northern side houses the university and its student "hang-outs", as well as several traditional ryokan inns. To the south lies the shopping district with department stores and restaurants. You'll find Susukino with wall-to-wall entertainment here, locals and visitors alike congregating here to enjoy the variety of bars, restaurants and clubs.

## DO & SEE

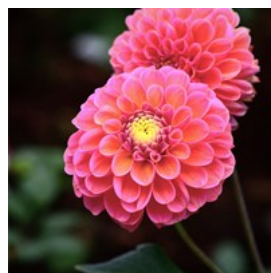


*tasch/Shutterstock.com*

One of the last areas of Japan to be colonised, it once was the domain of the "Ainu", an indigenous tribe with a distinct culture, whose history is on display in one of the city's museums today. Adorned by parks and forests, complete with wildlife, it is a colourful, progressive, and energetic city that attracts the adventurous traveller.

The legacy of Sapporo's vivid past is perceivable through various historical buildings. Historic landmarks include the former Hokkaidō government office building, the Sapporo Clock Tower, the Hokkaidō Shrine and the Sapporo TV Tower. Having hosted the 1972 Winter Olympics and as venue for the Sapporo Snow Festival, the city is also famous for winter sports. However, food and arts lovers will enjoy themselves here as well. Sapporo Brewery and Shiroi Koibito Park, the Sapporo Symphony Orchestra, and Sapporo Artpark are popular sights, too.

### Hokkaido University Botanical Gardens



Visit the botanical gardens on the outskirts of the city. There are plenty of pleasant walking trails and lawns, inviting you to take a break. The area includes a small Ainu museum, a



greenhouse and an alpine garden.

Photo: Nopp Chan-thada/Shutterstock.com

Address: North 3, West 8, Chuo-ku, Sapporo

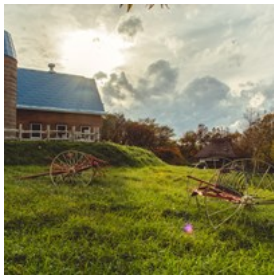
Opening hours: Winter season from 10:00 a.m. to 3:30 p.m., on Saturdays from 10:00 a.m. to 12:30 p.m., closed on Sundays and National holidays; Summer season from 9:00 a.m. to 4:00 p.m., on Saturdays from 9:00 a.m. to 4:00 p.m., closed on Mondays and National holidays

Phone: +81 11 221 0066

Internet: [www.hokudai.ac.jp](http://www.hokudai.ac.jp)

More Info: In Winter Greenhouse only is available

### Historical Village of Hokkaido



The Historical Village of Hokkaido has an outdoor reconstruction of Hokkaido life from the mid 19th Century. It shows 60 different types

of buildings from this century and shows a town, fishing village, farm village and a mountain village.

Photo: Eucliwood/Shutterstock.com

Address: 50-1 Atsubetsu-cho Konopporo, Atsubetsu-ku, Sapporo

Opening hours: Winter season from 9:00 a.m. to 4:00 p.m., summer season from 9:00 a.m. to 4:30 p.m.

Phone: +81 11 898 2692

Internet: [www.kaitaku.or.jp](http://www.kaitaku.or.jp)

### Tokei-dai - Sapporo Clock Tower



This clock tower is a lasting reminder of Sapporo's comparatively recent past. The wooden building is of American design and one of the few remaining Western-style buildings. It is a witness of the help Sapporo received from the American government in the 1870's when the city was first developed.

Photo: MY stock/Shutterstock.com

Address: 2-1-1 Kita 1 Jonishi, Chuo-ku, Sapporo

Opening hours: Weekdays from 8:45 a.m. to 5:10 p.m.

Phone: +81 11 231 0838

Internet: [sapporoshi-tokeidai.jp](http://sapporoshi-tokeidai.jp)

### Former Hokkaido Government Building



This red brick building with its characteristic octagonal dome is beautifully lit after dark. It has been destroyed several times over the

years, and restored time and again to its former glory. The building is today listed as one of the National Important Cultural Property, and a symbol of the city itself.

Photo: trusjom/Shutterstock.com

Address: Kita 3-jo, Nishi 6-chome, Chuo-ku, Sapporo

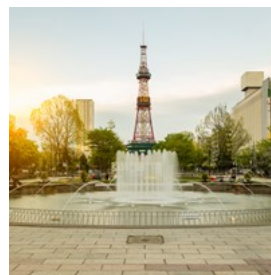
Opening hours: Mon - Fri 8:45 a.m. to 5:30 p.m., closed on Saturdays and Sundays

Phone: +81 11 231 4111

Internet: [www.pref.hokkaido.lg.jp](http://www.pref.hokkaido.lg.jp)

More Info: English-speaking volunteers for tours around the museum

### Sapporo TV Tower



The Sapporo TV Tower is now used as an observation tower, offering a fantastic view of the entire city. It was built in 1957 and is

located right by Odori Park.

Photo: Prasit Rodphan/Shutterstock.com

Address: 1 Chome Odori-nishi, Chuo-ku, Sapporo

Opening hours: Open daily from 9:00 a.m. to 10:00 p.m.

Phone: +81 11 241 1131

Internet: [www.tv-tower.co.jp](http://www.tv-tower.co.jp)

More Info: Opening hour may change due to additional events

### Sapporo Maruyama Zoo



The Maruyama Zoo covers a vast area and has an amazing variety of animals and birds, around 200 different species. It is a great place to take children, and visit (for example) the Tropical Animal House, the Bear House or the Kid's Zoo.

Photo: Hiroaki Ooi/Shutterstock.com

Address: 3-1 Miyagaoka, Chuo-ku, Sapporo

Opening hours: Summer season from 9:30 a.m. to 4:30 p.m.,  
winter season from 9:00 a.m. to 4:00 p.m.

Phone: +81 11 621 1426

Internet: [www.city.sapporo.jp/zoo/](http://www.city.sapporo.jp/zoo/)

More Info: Credit cards and SAPICA cards accepted

### Sapporo Beer Museum



Hokkaido is where beer was born in Japan. This historic brewery opens its doors for a full tour and of course, sampling is a must. Sapporo Beer has been brewed here since 1877, and is one of the most popular brands in the country to-date. There is a beer garden on premises, with two restaurants.

Photo: Det-anan/Shutterstock.com

Address: 9-1-1 Kita 7 Johigashi, Higashi-ku, Sapporo

Opening hours: Tues - Sun from 11:00 a.m. to 8:00 p.m.,  
closed on Mondays

Phone: +81 11 748 1876

Internet: [www.sapporobeer.jp](http://www.sapporobeer.jp)

More Info: Free tour and free of charge, G=guidance only in Japanese (paid tour with final tasting session)

### Shiroi Koibito Park



Shiroi Koibito is a chocolate factory located in a picturesque fantasy land which is beautifully decorated. In the museum and on a factory tour you can see the process of confectionery production and taste some samples in the adjacent café.

Photo: Tirass Trintecha/Shutterstock.com

Address: 2-11-36 Miyanosawa 2 jo, Nishi-ku, Sapporo

Public Transport: Subway: Get off at Miyanosawa Station on the Tozai Subway Line

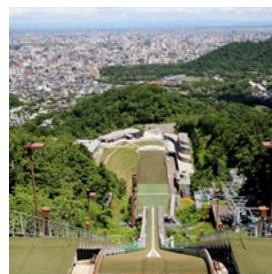
Opening hours: Open daily from 9:00 a.m. to 6:00 p.m.

Phone: +81 11 666 1481

Internet: [www.shiroikoibitopark.jp](http://www.shiroikoibitopark.jp)

More Info: The factory observation area is currently closed due to renovations until July 11th 2019

### Mount Okura Ski Jump Stadium and Museum



Mount Okura is the place to encounter an Olympic ski jump stadium and put yourself into athletes' shoes for a short while. You can take the ski lift to the top and admire the beautiful view of the mountains and city. Close to it is the Sapporo Winter Sports Museum with interactive games for young and old.

Photo: tasch/Shutterstock.com

Address: 1274 Miyanomori, Chuo-ku, Sapporo

Phone: +81 11 641 8585

Internet: [okura.sapporo-dc.co.jp](http://okura.sapporo-dc.co.jp)

### Mt. Moiwa



With its 530 meters, Mt. Moiwa is the highest landmark in Sapporo. Take the ropeway up to the top and stay until the sun has set to enjoy the change in lighting. Be aware that it can be chilly in winter.

Photo: Fuu TaMin/Shutterstock.com

Address: 5-3-7 Fushimi, Chuo-ku, Sapporo

Opening hours: Open daily from 11:00 a.m. to 10:00 p.m.

Phone: +81 11 561 8177

### Sapporo Snow Festival



Taking place in February, the Sapporo Snow Festival is an impressive event. Huge snow sculptures, one more fascinating than the next, dot Odori Park; some require a staggering 500 trucks filled with snow to be built.

Photo: Luftikus/Shutterstock.com

Address: 4 Odorinishi, Chuo-ku Odori Park, Sapporo

Opening hours: Every year until 2/11

Internet: [www.snowfes.com](http://www.snowfes.com)

### Moerenuma Park



With its fountain and hills forming many geometric shapes, Moerenuma Park is an attraction for all four seasons. In spring the trees look like a sea of cherry blossoms, in summer you can enjoy the refreshing fountain and wading pool facilities, in the fall the whole park is full of colourful leaves and in winter you can go cross-country skiing or sledding.

Photo: Tasch/Shutterstock.com

Address: Moerenuma-koen 1-1, Higashi-ku, Sapporo

Opening hours: Open daily from 7:00 a.m. to 10:00 p.m.

Phone: +81 11 790 1231

Internet: [moerenumapark.jp](http://moerenumapark.jp)

### Odori Park



Originally Odori Park was built to separate the city centre, namely the administrative district, from the residential and commercial district.

Nowadays, it serves as an oasis directly in the city and is used as a venue for several festivals throughout the year. YOSAKOI Soran Festival, Beer Garden and the Summer Festival as well as the Snow Festival and the White Illumination all take place here.

Photo: tasch/Shutterstock.com

Address: Odorinishi, Chuo-ku, Sapporo

Opening hours: Open 24/7

Phone: +81 11 251 0438

Internet: [www.sapporo-park.or.jp/odori](http://www.sapporo-park.or.jp/odori)

### Takino Suzuran Hillside National Government Park



There are a lot of activities for both children and adults at Takino Suzuran Hillside Park. In the winter, you can go sledding and

tubing or skiing on a gentle slope. In the summer, the park is full of pretty flowers and children can engage physically by bouncing on rubber, rolling huge red balls up the hills, exploring mazes and spider web climbing.

Photo: nkjn22/Shutterstock.com

Address: 247 Takino, Minami-ku, Sapporo

Public Transport: Take the subway to Makomanai station (namboku line) and then the bus 106



Opening hours: Open daily from 9:00 a.m. to 5:00 p.m.

Phone: +81 11 592 3333

Internet: [www.takinopark.com](http://www.takinopark.com)

More Info: The period Takino Park is open depends on the season; free admission for children under 15; only cash (Japanese yen)

### Hokkaidō Shrine



Hokkaido Shrine is said to be the oldest temple in Japan. After a wonderful stroll through Murayama Park, you get to the Shrine. The entrance to

the temple is very traditional with little stone pillars either side and traditional ceremonies are held regularly.

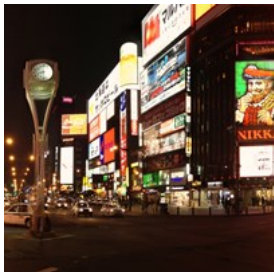
Photo: Gigira/Shutterstock.com

Address: 474 Miyagaoka, Chuo-ku, Sapporo

Phone: +81 11 611 0261

Internet: [www.hokkaidojingu.or.jp](http://www.hokkaidojingu.or.jp)

### Susukino



This bustling part of the city becomes alive at night. Restaurants, entertainment venues, bars and shops are lining the street and illuminate

the whole area. When you are fairly new in this city, try to stay on main roads and avoid wandering into dark alleys.

Photo: MIKI Yoshihito/flickr.com(image cropped)

Address: Chuo-ku, Sapporo

### Sapporo Dome



Watch the local baseball or football teams Hokkaido Nippon Ham Fighters and Consadole Sapporo play on their home field. The dome has

also been the venue of the 2002 FIFA World Cup and is the planned venue for future Olympic Games and Asian Winter Games as well.

Photo: AnnWei/Shutterstock.com

Address: 1 Hitsujigaoka, Toyohira-ku, Sapporo

Phone: +81 11 850 1000

Tickets: Observation deck fee for adults is ¥520 and for elementary and high school students ¥320

Internet: [www.sapporo-dome.co.jp](http://www.sapporo-dome.co.jp)

### Asahiyama Memorial Park



Located on a hill overlooking the city, the Asahiyama Memorial Park is a great place to get an amazing view of Sapporo and its

surroundings. After a small hike up a path in the woods, you can enjoy the spectacular scenery either during the day or at night when the city lights are shining in the dark.

Photo: MIKI Yoshihito/Flickr.com(image cropped)

Address: 4 Sakaigawa, Chuo-ku, Sapporo

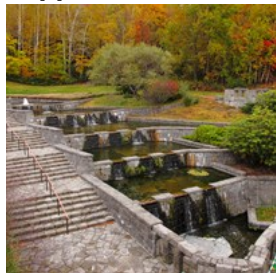
Opening hours: Open daily from 6:00 a.m. to 10:00 p.m.

Phone: +81 11 200 0311

Internet: [www.sapporo-park.or.jp/asahiyama](http://www.sapporo-park.or.jp/asahiyama)

More Info: Rest House opens from 10:00 a.m to 4:00 p.m.; parking spots available

### Sapporo Art Museum



Sapporo Art Museum is a great spot for both outdoors lovers and art fanatics. The open-air sculpture garden combines the best of both worlds and offers a good balance of art and nature.

Photo: MIKI Yoshihito/Flickr.com(image cropped)

Address: 2-2-75 Geijutsunomori, Minami-ku, Sapporo

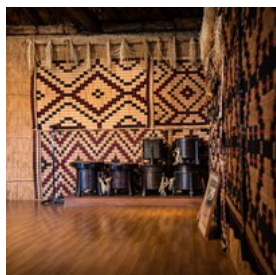
Opening hours: Tues - Fri from 9:45 a.m. to 5:00 p.m., closed on Mondays and National holidays

Phone: +81 11 592 5111

Internet: [artpark.or.jp](http://artpark.or.jp)

More Info: Entry free, admission ends 30 minutes before closing time

### Hokkaido Ainu Center



The Ainu are the indigenous people of Japan and Russia, speaking Ainu language. This centre traces the distinctive history and

culture of the island's indigenous people to deepen the historical recognition of these people and preserve their culture for generations to come.

Photo: Dari Extension/Shutterstock.com

Address: Kaderu 2.7 Bldg (7F) Nishi 7 Kita 2, Chuo-ku, Sapporo

Opening hours: Mon - Sat 9:00 a.m. to 5:00 p.m., closed on Sundays and National Holidays

Phone: +81 11 221 0462

Tickets: Admission free

Internet: [www.ainu-assn.or.jp](http://www.ainu-assn.or.jp)

More Info: In front of the Hokkaido University Botanical Gardens, 10 minutes walk from Sapporo Station

## DINING



Kei Shooting/Shutterstock.com

Sapporo's proximity to the sea and its open plains provide the city with an abundance of fresh seafood, vegetables, and dairy products. The Susukino district, brimming over with restaurants, is alive with flavour. Here you will find fine examples of local delicacies, including ramen, sushi, crab, Uni (sea urchin), and Genghis Khan (lamb barbecue).

### Kaniya Sapporo Crab House



Kaniya Sapporo is a multi-level restaurant with grand decor and a menu to match, crab being the speciality. Crab sashimi, kani-sukiyaki, boiled crab, and more are all to be had here.

Photo: Suchart Boonyavech/Shutterstock.com

Address: Kani-ya Build. 3F, 11 Minami 4-jo Nishi 2-chome, Chuo-ku, Sapporo

Opening hours: Lunch from 11:30 a.m. to 3:00 p.m., Dinner from 5.00 p.m. to 10:30 p.m.

Phone: +81 11 222 1117

Internet: [www.kani-ya.co.jp](http://www.kani-ya.co.jp)

More Info: Open on New Year's Eve and New Year's Day, free WI-FI

### Kirin Beer Garden



Genghis Khan grill offers set prices on an all-you-can-eat buffet (sessions last 100 minutes). This beer restaurant also serves

local dishes, various crab dishes, shiraoi Japanese beef and party courses.

Photo: gontabunta/Shutterstock.com

Address: Minami 3 jonishi, 4 chome, Chuo-ku, Sapporo  
Public Transport: 2 minutes walk from Subway Namboku Line Susukino station  
Opening hours: Open daily from 11:30 a.m. to 11:00 p.m.  
Phone: +81 11 207 8000  
Internet: [www.kirinbeer-en.co.jp](http://www.kirinbeer-en.co.jp)

### Fukunoyatanaka



Fukunoyatanaka, located a 5-minute walk from the Susukino station, is well-known for its puffer fish dishes. Private rooms and a smoking area are

also available. In addition, the entrance fee includes also an all-you-can-drink menu.

Photo: Funny face/Shutterstock.com

Address: 5 Chome Minami 3 Jonishi, Chuo-ku, Sapporo  
Opening hours: Open daily from 4:00 p.m. to 11:00 p.m.  
Phone: +81 11 242 3553  
Internet: [fukunoyatanaka.gorp.jp](http://fukunoyatanaka.gorp.jp)  
More Info: Delivery and take away available

### Via BRERA



This is the place for Sapporo-style Italian cuisine. The extensive menu also contains a wide variety of good wines to choose from. The entry fee includes unlimited drinks for the whole stay.

Photo: avs/Shutterstock.com

Address: South 3 West 2, Chuo-ku, Sapporo  
Opening hours: Lunch from 11:30 a.m. to 2:00 p.m., Dinner 6:00 a.m. to 11:00 p.m., closed on Sundays  
Phone: +81 11 887 7381  
Internet: [www.viabrera.jp](http://www.viabrera.jp)  
More Info: KT3 article building 1F

### Soup Curry & Cafe Suage



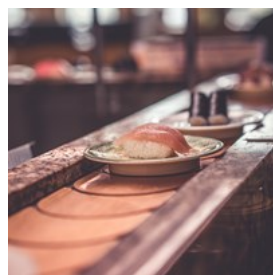
After all the outdoor activities in Sapporo, what could be better to warm you up than a hot soup. The soup curry at this restaurant is

fantastic and a must try. You first order your meat, all of the finest quality, then you order the soup base either squid ink or curry broth and last but not least, you can choose the spiciness.

Photo: Gnepphoto/Shutterstock.com

Address: 7-chôme-1-1 Maruyama Nishimachi, Chuo-ku, Sapporo  
Opening hours: Open daily from 11:30 a.m. to 10:00 p.m.  
Phone: +81 11 624 6766  
Internet: [suage.info/en/](http://suage.info/en/)  
Email: [soup-curry@suage.info](mailto:soup-curry@suage.info)

### Nemuro Hanamaru



This gem of a place is unfortunately far from being a secret. Thus the queue can be pretty long. However, the sushi coming on conveyor belts

is so excellent, it is a popular place for tourists and locals alike. Grab a ticket, ask the staff to help you with the Japanese ticket machines, be prepared to wait about 45 mins and enjoy flavourful and fresh sushi.

Photo: Aris Suwanmalee/Shutterstock.com

Address: Nishi 2, Kita 5, Chuoh-ku, Sapporo  
Opening hours: Open daily from 11:00 a.m. to 11:00 p.m.



Phone: +81 11 209 5330

Internet: [www.sushi-hanamaru.com](http://www.sushi-hanamaru.com)

More Info: JR Tower Stellar Place 6F

### Daimaru Sapporo Food Area



Daimaru Sapporo Food Area is full of culinary scents. Whether you just want to have a look at the local delicacies and admire the beautiful

packages or want to grab a bite to eat, the stalls here offer so many snacks nobody will leave hungry. Food options range from tit-bits to snack foods to full meals at affordable prices. Inside this area you will also find a KitKat speciality boutique.

Photo: [sasaken/Shutterstock.com](#)

Address: 4-7, Kita 5 Jonishi, Chuo-ku, Sapporo

Opening hours: Open daily from 11:00 a.m. to 10:00 p.m.

Phone: +81 11 828 1111

Internet: [www.daimaru.co.jp](http://www.daimaru.co.jp)

More Info: At Daimaru Sapporo 8F, no smoking area

### Sky J



Located at the very top of JR Tower Hotel Nikko, Sky J provides a panoramic view of Sapporo city. They serve fusion food and a variety

of western and Japanese dishes made with fresh seasonal ingredients.

Photo: [Visionsi/Shutterstock.com](#)

Address: Kita 5 Jonishi, 2-5, Chuo-ku, Sapporo

Opening hours: Breakfast from 6:30 a.m. to 10:30 a.m.,

Lunch from 11:30 a.m. to 3:30 p.m., Dinner from 5.30 p.m. to 8:30 p.m.

Phone: +81 11 251 6377

Internet: [www.jrhotels.co.jp/tower/restaurant](http://www.jrhotels.co.jp/tower/restaurant)

More Info: Located at JR Tower Hotel Nikko 35F, Bar opens from 8:30 p.m. to 11.00 p.m.

### Sapporo Beer Garden



This beautiful old building has a unique atmosphere. Meat lovers will thoroughly enjoy the Japanese style barbecue with a cold beer. After a brief instruction on how to use it, you'll be able to grill your meat straight on the table.

Photo: [Vivien/Shutterstock.com](#)

Address: North 7 Jo 9 Chome 2-10, Higashi-ku, Sapporo

Opening hours: Open daily from 11:30 a.m. to 10:00 p.m.

Phone: +81 120 150 550

Internet: [www.sapporo-bier-garten.jp](http://www.sapporo-bier-garten.jp)

More Info: Recommended to reserve a table in order to avoid the long queue

### Molière



At this cosy French Michelin restaurant, you can try excellent French and Japanese Fusion food, namely gourmet French dishes with

Japanese accents as well as seasonal and local Hokkaido ingredients. The sommelier will recommend a complementing wine from the extensive wine list.

Photo: [Visionsi/Shutterstock.com](#)

Address: 2-1-1 Miyagaoka, Chuo-ku, Sapporo

Opening hours: Lunch from 11:00 a.m. to 2:00 p.m., Dinner from 5:30 p.m. to 8:00 p.m., closed on Wednesdays

Phone: +81 11 631 3155

Internet: [www.sapporo-moliere.com](http://www.sapporo-moliere.com)

### Menya Saimi



You can easily spot this place by the long queue lining at its door. This might be due to its excellent reputation. The suburban restaurant's

ramen was voted number one by ramen chefs in Japan. Five ramen flavors are on the menu, all made with fresh ingredients. Get the miso ramen, their number one most popular dish on the menu.

Photo: Aaron Choi /Shutterstock.com

Address: Misono 10-jo, Toyohira-ku, Sapporo

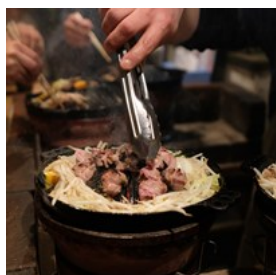
Public Transport: 8 minutes walk from Exit 1 of Misono Station

Opening hours: Closed on Mondays, Tues - Wed from 11.00 a.m. to 3:15 p.m., Thu - Sun from 11.00 a.m. to 3:15 p.m./ 5:00 p.m. to 7:30 p.m.

Phone: +81 11 820 6511

More Info: Cash only

### Jingisukan Daruma 4 4 Nikaitei



Lamb lovers are going to love this place as they serve tender lamb and the best Gengis Khan in town with fresh mutton meat and Dharma meat.

Various beer brands like Kirin Ichiban Shibori Sapporo Classic are on the menu to best accompany your meal.

Photo: Frank Sin/Shutterstock.com

Address: Minami 4 jo Nishi 4, Sapporo

Opening hours: Open daily from 5:00 p.m. to 3:00 a.m.

Phone: +81 11 551 8844

Internet: [www.best.miru-kuru.com/daruma/](http://www.best.miru-kuru.com/daruma/)

### Picante Soup Curry



Soup curry with layers of flavour are a must-try in Hokkaido. The name Picante is no verdict: you can adjust the spiciness of the dish from mild to

super hot, for those looking for a kick.

Photo: Kim han bit/Shutterstock.com

Address: 3 Kita 13 Jonishi, Kita Ward, Sapporo

Opening hours: Open daily from 11:30 a.m. to 11:00 p.m.

Phone: +81 11 737 1600

Internet: [www.picante.jp](http://www.picante.jp)

Email: [sudoh@picante.jp](mailto:sudoh@picante.jp)

More Info: There is also the Picante Sapporo Eki Mae branch

### Ebisoba Ichigen



This restaurant is a bit off the beaten path but the Ebisoba menu is worth the search. The thick soup can be modified according to your

preferences; the egg topping is highly recommended.

Photo: Koki Yamada/Shutterstock.com

Address: 9-1024-10 Minami 7-Jo Nishi, Chuo-ku, Sapporo

Opening hours: Mon-Sun from 11:00 a.m. to 3:00 a.m., closed on Wednesdays

Phone: +81 11 513 0098

Internet: [www.ebisoba.com](http://www.ebisoba.com)

### Daruma Honten



At Daruma Honten, the menu quite is plain: lamb and onion grilled on wood. It sounds simple but the combination of lamb, onion and shallot is

amazing, the real deal without over-complicated sauces or exuberant inventions. The lamb is simply good and tender.

Photo: Viroonrat Trapcharoen/Shutterstock.com

Address: 4-4 Minami 5 Jonishi, Chuo-ku, Sapporo

Opening hours: Open daily from 5:00 p.m. to 3:00 a.m.

Phone: +81 11 552 6013

Internet: [best.miru-kuru.com/daruma](http://best.miru-kuru.com/daruma)

More Info: Crystal Building 1F, last order 30 minutes before closing time

### Ramen Shingen



Ramen Shingen is a typical traditional Japanese tavern which serves ramen that lives up to its reputation. The broth is rich and tasty

until the last drop, and the gyoza is fantastic as well.

Photo: Kenstockphoto/Shutterstock.com

Address: 8-8-2 Minami 6 Jonishi, Chuo-ku, Sapporo

Opening hours: Open daily from 11:30 a.m. to 1:00 a.m.

Phone: +81 11 530 5002

More Info: Ranked one of the best ramen in the city

### Farm to Table TERRA



Tired of heavy ramen broth and grilled lamb, and looking for some plant-heavy food? Terra caters to all tastes and features a creative menu

with mouth-watering vegetarian and vegan cuisine. All the ingredients are labelled and dishes range from soy meat burger with Hokkaido mozzarella cheese to vegetarian galettes.

Photo: sarsmis/Shutterstock.com

Address: 2-2-10 Minami 9 Jonishi, Chuo-ku, Sapporo

Opening hours: Open daily from 7:00 a.m. to 10:00 a.m./  
11:00 a.m. to 11:00 p.m.

Phone: +81 11 512 3547

Internet: [sapporo-terra.com](http://sapporo-terra.com)

More Info: Reservations required

### Gotsubo Oyster Bar



Take a break from all the miso ramen at Gotsubo. This diner is well known for its big fresh oysters. Its good reviews make this tiny spot in the heart

of Sapporo very crowded, especially during dinner time.

Photo: Kazoka/Shutterstock.com

Address: 4 Chome Minami 6 Jōnishi, Chuo-ku, Sapporo

Public Transport: 5 minutes away from Susukino Station

Opening hours: Open daily from 6:00 p.m. to 2:00 a.m.

Phone: +81 11 551 7220

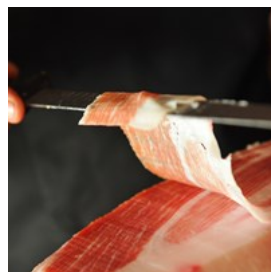
More Info: Cash only

### CAFES



fotohunter/Shutterstock.com

### Eight Ricefield Cafe



This café, with its rounded tables and a New York-inspired design, is so popular among locals and visitors that a reservation is

required. Their specialities are creamy Italian desserts, pizza and other Western cuisine. Chef recommendation is the Rossini of Foie Gras.

Photo: Visionsi/Shutterstock.com



Address: Sapporo, Hokkaido Chuo-ku Minami 5 Jo Nishi 4, Arutobiru 1F  
Public Transport: 1 minute walk from Sapporo Municipal Subway Nanboku Line Susukino Station  
Opening hours: Open daily until 6:00 a.m.  
Phone: +81 11 757 8878  
Internet: [eightricefieldcafe-susukino.gorp.jp](http://eightricefieldcafe-susukino.gorp.jp)  
More Info: Reservations required, book with GURUNAVI for English Support

### Miyakoshiya Coffee



Miyakoshiya offers a cosy atmosphere with pleasant music and tasty coffee. A great alternative to come and relax after a day of sightseeing.

Photo: ui-chan/Shutterstock.com  
Address: North 6 West 4 chome 3-1, Kita-ku, Sapporo  
Opening hours: Open daily from 7:30 a.m. to 10:00 p.m.  
Phone: +81 11 213 5606  
Internet: [www.miyakoshiya-coffee.co.jp](http://www.miyakoshiya-coffee.co.jp)  
More Info: Sapporo Paseo Floor & Shop guide West 1F/ Shop NO. 8

### Brown Books Café



Brown Books Café offers a unique opportunity to sit down in peace and quiet and enjoy a good book while sipping on a hot coffee. The first floor has a quaint shop selling organic coffee beans, newspapers and coffee related goods. The second floor is a small café with Japanese and English books.

Photo: Marian Weyo/Shutterstock.com  
Address: 1 Chome-2-4 Minami 3 Jonishi, Chuo-ku, Sapporo  
Opening hours: Mon- Sun from 12:00 a.m. to 9:00 p.m., closed on Wednesdays  
Internet: [www.brownbookscafe.com](http://www.brownbookscafe.com)  
More Info: Wada Bldg 3F

### Kotobuki Coffee



with delightful desserts.

Kick off your day before the sightseeing at this wood-dominated coffee shop. Their menu includes a wide choice of coffee and tea served

Photo: nimon/Shutterstock.com  
Address: 1 Chome-1-8 Minami 2 Johigashi, Chuo-ku, Sapporo  
Opening hours: Open daily from 9:00 a.m. to 12:00 a.m., on Sundays and Holidays from 10:00 a.m. to 8:00 p.m.  
Phone: +81 11 303 1450  
Internet: <http://kotobuki-coffee.com>  
Email: [info@kotobuki-coffee.com](mailto:info@kotobuki-coffee.com)

### SATURDAYS Chocolate Factory Cafe



SATURDAYS Chocolate Factory Cafe is a local brand that makes chocolate from raw cocoa beans. Attached to the coffee shop is a factory where visitors can see first-hand how these popular hand-crafted chocolate bars are made. Hot chocolate, choco-latte and brownies are just a few hits from their large menu.

Photo: Billion Photos/Shutterstock.com  
Address: Salmon 1F, 7-1, South 2 East 2, Chuo-ku, Sapporo  
Opening hours: Open daily from 10:00 a.m. to 6:30 p.m.  
Phone: +81 11 208 2750  
Internet: [www.saturdayschocolate.com](http://www.saturdayschocolate.com)  
Email: [info@saturdayschocolate.com](mailto:info@saturdayschocolate.com)

### Snow Brand Parlor



The Snow Brand Parlor café is famous among locals and visitors for its "Snow Royal" ice cream, created in honour of a Showa emperor. Here,

matcha lovers will likely swoon over the matcha affogato; other than their popular ice cream they also serve more than 30 different types of cakes and parfait, all made with local and fresh dairy products.

Photo: Suzi Pratt/Shutterstock.com

Address: Kita 2 Jonishi, 3 Chome-1-31 (Seimei Sapporo Bldg 1F), Chuo-ku, Sapporo

Public Transport: 5 minutes walk from Sapporo Station

Opening hours: Open daily from 10:00 a.m. to 9:00 p.m.

Phone: +81 11 251 7530

Internet: [www.snowbrand-p.co.jp](http://www.snowbrand-p.co.jp)

More Info: Online shop available

### ISHIYA Café



Ishiya Café, popular for Its Shiroi Koibito - a sandwiched chocolate cookie - is the place to drink some hot chocolate, have parfait and cakes, all made with Hokkaido fresh dairy products, or to have a light but delightful lunch.

Photo: Toiwoody/Shutterstock.com

Address: 4-6-1 Ōdorinishi, Chuo-ku, Sapporo

Public Transport: 6 minutes walk from Odori Station

Opening hours: Open daily from 8:00 a.m. to 10:00 p.m., closed on National holidays

Phone: +81 11 231 1487

Internet: [www.ishiya.co.jp/cafe](http://www.ishiya.co.jp/cafe)

## BARS & NIGHTLIFE



Maksim Fesenko/Shutterstock.com

For bars, head for Susukino: it is safe, well-lit, and bright with neon lights. Being the famous beer capital of Japan, Sapporo is never short of a pint; be sure to visit a traditional pub known locally as izakaya. South of Odori Park is Susukino, the hub for entertainment. This is an area dense with bars, hostess bars, and nightclubs.

### Susukino District

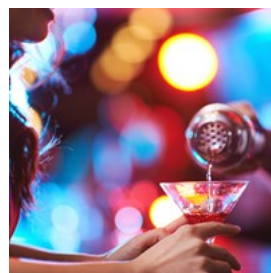


This bustling part of the city comes alive at night. Restaurants, entertainment venues, bars and shops line the streets and illuminate the area. If you are fairly new to the city, try to stay on main roads and avoid wandering into dark alleys.

Photo: MIKI Yoshihito/flickr.com(image cropped)

Address: Chuo-ku, Sapporo

### Famous Door



Famous Door might be located in Japan, but is designed to create a New Orleans atmosphere. This is the type of place where you meet locals and even

get to strike up conversation with the Japanese.

Photo: Pressmaster/Shutterstock.com

Address: 4 Chome-2 Kita 24 Jonishi, Kita-ku, Sapporo

Opening hours: Open daily from 5:00 p.m. to 2:00 a.m.

Phone: +81 11 736 2002

Internet: <https://tabelog.com>

More Info: Smoking area available, reservation required  
(+81-50 5890 1704 - for info in English)

### Buddy Buddy



The owner designed this American bar himself.

The crowd is usually in their late thirties, with two open floors and live bands. You will most

likely hear jazz and blues here.

Photo: Nejron Photo/Shutterstock.com

Address: 1 Chome-2-3 Kita 2 Johigashi Paradise Bldg., Chuo-ku, Sapporo

Public Transport: 10 minutes walk from Sapporo Station

Opening hours: Lunch from 11:30 a.m. to 3:00 p.m., Dinner from 5:00 p.m. to 1:00 a.m., on Sundays from 5:00 p.m. to 1:00 a.m.

Phone: +81 11 271 8882

Internet: [www.buddybuddy.jp](http://www.buddybuddy.jp)

### Beggars Harlem



Situated above Buddy Buddy, Beggar's Harlem is the place for the best live music, particularly for blues and jazz. The cosy, eclectic interior

with red leather couches creates a perfect atmosphere to relax and unwind.

Photo: Efired/Shutterstock.com

Address: Kita 2-Jo Higashi 1, Paradise Bldg. 2F, Chuo-Ku, Sapporo

Opening hours: Open daily from 6:00 p.m. to 12:00 a.m.

Phone: +81 11 233 0555

Internet: <http://beggars-harlem.com>

### British Pub Darwin



As the name already suggests, British Pub Darwin is a typical British style pub with a live stage. The menu includes classic pub grub such as shepherd's pie, fish and chips and haggis, as well as draft and bottled beer selections from Britain.

Photo: Arina P Habich/Shutterstock.com

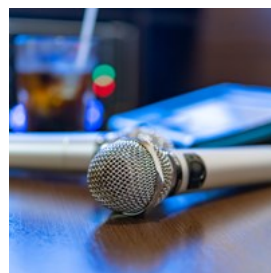
Address: Satsueki Bridge 1F, Kita 6 Nishi 5, Chuo-ku, Sapporo

Opening hours: Mon - Sat from 11:30 a.m. to 3:00 a.m., Sunday & Holiday from 11:30 a.m. to 12:00 a.m.

Phone: +81 11 200 2007

Internet: [darwin.kei-i.jp](http://darwin.kei-i.jp)

### Big Echo Karaoke



Going to a typical Japanese Karaoke Bar should definitely be on your list when in Sapporo. People gather with some friends, have

some drinks and sing along. Big Echo Karaoke offers karaoke in English, Chinese, Korean and Japanese, with varied song choices to make it possible for everyone to join.

Photo: Princess\_Anmitsu/Shutterstock.com

Address: 3-10 Minami 3 Jonishi, Chuo-ku, Sapporo

Opening hours: Open daily from 10:00 a.m. to 6:00 a.m.

Phone: +81 11 252 0505

More Info: Hokkaido Sanshin Bldg. B1F, 2F, close to Susukino Station



### 500 Bar & Dining



500 Bar, located in the Susukino precinct, is famous to its foreign and local clientele for the affordable prices. Their menu lists all kinds of drinks and food for only ¥540 (tax included). If you don't speak Japanese ask the waiter for the English menu.

Photo: Maksim Fesenko/Shutterstock.com

Address: South 4 West 2, Chuo-ku, Sapporo

Public Transport: From Susukino Station Exit 3, 1 minute walk

Opening hours: Mon - Sat from 5:00 p.m. to 5:00 a.m.,

Sunday & Holiday from 5:00 p.m. to 3:00 a.m.

Phone: +81 11 521 5731

Internet: <https://500bar-dining.gorp.jp>

More Info: All-you-can-drink available for 2000 yen

## SHOPPING



Elena Pavlovich/Shutterstock.com

Sapporo provides a great number of stores, offering everything from fashion boutiques with well-known Western brands to traditional cotton or silk kimonos. Not only the city offers a number of large underground malls such as the popular Tanuki Koji Shopping Arcade, but also department stores like Parco with ten floors of shopping—and don't forget the small local shops selling souvenirs. Other popular products in Hokkaido besides kimonos are wood carvings, produced often by the Ainus, available in the

boutiques of Sapporo as well as in the gift shops of hotels and museums.

### Nijo Fish Market



For those who just can't get enough of local markets, your first port of call must be the historical Nijo Ichiba Market, south of Nijo Street.

Accommodating approximately sixty shops, the market sells fresh, local produce and cooked foods, as well as local souvenirs.

Photo: MPanchenko/Shutterstock.com

Address: 1 Chome Minami 3 Johigashi, Chuo-ku, Sapporo

Opening hours: Open daily from 7:00 a.m. to 6:00 p.m.

Phone: +81 11 222 5308

Internet: <https://nijomarket.com>

### Tanukikoji Shopping Arcade



Having celebrated its 135th anniversary in 2008, Sapporo Tanukikoji is one of the oldest shopping streets in Hokkaido. Tanukikoji, also known as "Raccoon Street", is a shopping arcade packed with fashion and restaurants as well as shops selling many local handcrafted souvenirs.

Photo: Arjan Richter/flickr.com(image cropped)

Address: Minami 2 & 3-jo Nishi 1-chome, 7-chome, Chuo-ku, Sapporo

Public Transport: 5 minutes away from Odori Station on the Subway Namboku, Tozai and Toho Line

Opening hours: Open 24/7

Phone: +81 11 241 5125

Internet: [www.tanukikoji.or.jp](http://www.tanukikoji.or.jp)

### Shiroi Koibito Park



Chocolate is possibly a surprising souvenir here in Sapporo but locally made chocolate confectionery is well worth treating yourself (or others) to. The distinguished Ishiya Chocolate Factory is well known in Japan and South East Asia. Their confectionery is incredibly popular with locals as well as visitors. The ultimate gift to purchase is the “shiroi koibito”, which literally means “white beloved ones”.

Photo: MissDuanghathai Kongpanya/Shutterstock.com  
Address: 2-11-36 Miyanosawa 2 jo, Nishi-ku, Sapporo  
Opening hours: Open daily from 9:00 a.m. to 6:00 p.m.  
Phone: +81 11 666 1481  
Internet: [www.shiroikoibitopark.jp](http://www.shiroikoibitopark.jp)

### Stellar Place Sapporo



Stellar Place is not only the place to go for fantastic local cuisine but also for convenient shopping under one roof. Brands include Gap, Unico, Bulgari, L'Occitane, Gucci, Hermes, Shiseido, asics and many more.

Photo: takako tominaga/flickr.com(image cropped)  
Address: 2 chome Kita 5 jo Nishi, Chuo-ku, Sapporo  
Opening hours: Shops from 10:00 a.m. to 9:00 p.m., Eateries from 11:00 a.m. to 11:00 p.m.  
Phone: +81 11 209 5100  
Internet: [www.stellarplace.net](http://www.stellarplace.net)

### Sapporo Factory



Situated in a former brewery with a central courtyard full of greenery, the lively Sapporo Factory is full of restaurants, shops offering travel gear, and even features a theatre. The huge glass rooftop makes it very light. Shops like Adidas, Nike, Crocs, Puma, Victorinox, The North Face and Elizabeth Jewelry are all located here. With 160 stores you can easily spend a few hours here shopping.

Photo: gpointstudio/Shutterstock.com  
Address: 4-1-2 Kita 2 Johigashi, Chuo-ku, Sapporo  
Public Transport: 12 minutes walk from JR Sapporo Station  
Opening hours: Stores open from 10:00 a.m. to 8:00 p.m., Eateries from 11:00 a.m. to 10:00 p.m.  
Phone: +81 11 207 5000  
Internet: [sapporofactory.jp](http://sapporofactory.jp)

### Savon de Siesta



Hand-made soaps made from natural ingredients in Hokkaido can be purchased at Savon de Siesta. Ingredients and fragrances are all locally grown and range from azuki beans to silver birch and natural salt from the Sea of Okhotsk. The favourite souvenir for the snow festival is a soap with snowflake crystal patterns.

Photo: Casper1774 Studio/Shutterstock.com  
Address: Minami 1-jo Nishi 12-chome 4-182, Chuo-ku, Sapporo  
Opening hours: Closed on Tuesday, Mon-Sun from 11:00 a.m. to 7:00 p.m.  
Phone: + 81 11 206 0710  
Internet: [siestalabo.com](http://siestalabo.com)  
More Info: Sapporo AS Bldg. 1F

### D&Department Project Sapporo by 3KG



With its abundance of woods and forests, Japan is also famous for its wooden products. Finest dinnerware with a unique wood texture made in

Asahikawa can be bought at this store and makes for an excellent souvenir.

Photo: Radu Razvan/Shutterstock.com

Address: 17-1-7 Odorinishi, Chuo-ku, Sapporo

Opening hours: Tues - Sat from 11:00 a.m. to 7:00 p.m., closed on Mondays and Sundays

Phone: +81 11 303 3333

Internet: [www.d-department.com](http://www.d-department.com)

### Space 1-15



Those looking for an alternative souvenir shopping experience should not miss Space 1-15. The old apartment building hosts 20 shops,

cafés, casual wear and artisans workshops in a unique environment. Just follow the hand-made floor guide board in the entrance and see how the products are made.

Photo: Darren Pullman/Shutterstock.com

Address: 15 Chome-1-319 Minami 1 Jonishi, Chuo-ku, Sapporo

Opening hours: Business days and hours differ depending on the stores.

Internet: [www.space1-15.com](http://www.space1-15.com)

### Sapporo Central Wholesale Market



Sapporo crab market is not only a market but a sight in itself. About 60 shops sell seafood and fresh marine products, meat, confectionery,

delicatessen and local produce at a very good price. The best way to try the Hokkaido delicacies is having a meal of fresh local seafood at one of the local restaurants.

Photo: MPanchenko/Shutterstock.com

Address: 2-3 North 11, West 21, Chuo-ku, Sapporo

Public Transport: 10 minutes walk from JR Soen Station

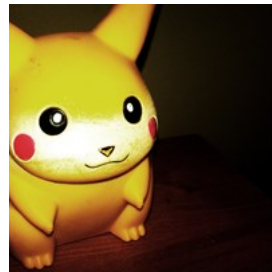
Opening hours: Opening hours depend from shop to shop, usually from 6:00 a.m.

Phone: +81 11 621 7044

Internet: [www.jyogaiichiba.com](http://www.jyogaiichiba.com)

Email: [info@jyogaiichiba.com](mailto:info@jyogaiichiba.com)

### Pokémon Center Sapporo



Definitely a must go for all Pokémon lovers who want to discover all their childhood heroes.

Located at ESTA adjacent to the game corner is a

store full of magic and nostalgia. In the decently sized store, you will find a staggering variety of pokémon-themed products and cards.

Photo: joeypedras/flickr.com(image cropped)

Address: 4-7 Kita 5 Jonishi, Daimaru Sapporo 8F, Chuo-ku, Sapporo

Opening hours: Open daily from 10:00 a.m. to 10:00 p.m.

Phone: +81 11 232 3212

Internet: [www.pokemon.co.jp](http://www.pokemon.co.jp)

### Paseo



Paseo is easily accessible and a haven for ardent shoppers. It has two levels of great restaurants to the west and fun shops to the east, including a few stores dedicated to popular Japanese cartoon characters like Hello Kitty.

Photo: Syda Productions/Shutterstock.com

Address: 2 Chome Kita 6 Jonishi, Kita-ku, Sapporo



Opening hours: Open daily from 10:00 a.m. to 9:00 p.m.

Phone: +81 11 213 5645

Internet: [www.e-paseode.com](http://www.e-paseode.com)

### Susukino Lafiler



Lafiler is a convenient shopping location with a view of Susukino from the upper floor. It is filled with shops selling chocolates, handbags,

clothes and women's apparel from both international and local brands.

Photo: [nenetus/Shutterstock.com](#)

Address: 4-1 Minami 4 Jonishi, Chuo-ku, Sapporo

Public Transport: The mall connects directly to Susukino

Subway Station (Namboku Line)

Opening hours: Open daily from 10:00 a.m. to 9:00 p.m.

Phone: +81 11 531 1111

Internet: [www.lafilier.com](http://www.lafilier.com)

### Parco



Plenty of shopping opportunities await you at the popular Parco department store, with over ten floors of high-street fashion stores,

together with impressive restaurants on the top floor. You will find shops selling everything from fashion to beauty and accessories, boutiques like Diesel, Paul Smith, Lush, Samsonite, Par Avion, Maison De Glamour and Plaza.

Photo: [Pressmaster/Shutterstock.com](#)

Address: 3-3 Minami 1 jo Nishi, Chuo-ku, Sapporo

Public Transport: Direct access from Odori Subway Station and from Pole Town Underground Shopping Mall and one

minute on foot from Nishi-yonchome streetcar stop

Opening hours: Open daily from 10:00 a.m. to 8:00 p.m.

Phone: +81 11 214 2111

Internet: [www.parco.co.jp](http://www.parco.co.jp)

More Info: On Saturdays the shopping mall stays open until 8:30 p.m.

## TOURIST INFORMATION



*Bumbim Pensinee/Shutterstock.com*

### Airport



New Chitose Airport is located 40km from Sapporo. JR Airport Express to Sapporo Station departs every 15 minutes and takes 36

minutes.

+81 123 23 0111

[www.new-chitose-airport.jp](http://www.new-chitose-airport.jp)

The bus takes approx. 60 -70 minutes to reach the centre of Sapporo.

Hokkaido Chuo Bus Line

+81 11 231 0500

Hokuto Kotsu Bus Line

+81 11 377 3855

Taxis are located outside the terminal. It takes about an hour to get to Sapporo.

Skybus provides a door to door shuttle from the airport to your hotel.

+81 80 3266 5685 (Tel: 050-3111-1846 within Japan)

Photo: Juan Garces

Address: New Chitose Airport, Sapporo

Phone: +81 123 23 0111

Internet: [www.new-chitose-airport.jp](http://www.new-chitose-airport.jp)

### Passport/Visa



Japan may be visited visa-free for up to 90 days by citizens of all European Union member states, Australia, Canada, the USA, as well as

several other world countries. The up-to-date list of visa exemptions by country may be found at: [https://www.mofa.go.jp/j\\_info/visit/visa/short/novisa.html](https://www.mofa.go.jp/j_info/visit/visa/short/novisa.html)

Citizens of countries not listed as not requiring visa will need to apply in advance via a Japanese mission or consulate closest to them.

Special visa requirements apply to citizens of China and the Philippines, as well as travellers visiting Japan as part of a cruise journey.

Photo: TukTuk Design/Shutterstock.com

### Best Time to Visit



The best time to visit Sapporo is in winter and summer. In these two seasons different kinds of events are held. In February, the Snow

Festival, one of the most awaited events by locals and visitors is held. Outstanding and massive snow sculptures dominate the city during this period. In summer, lavender fields of Furano and the cherry blossom attract crowds of travelers.

Some interesting events throughout the year:  
May: Sapporo Lilac Festival

June: Hokkaido Shrine Festival  
September: Sapporo Autumn Fest  
February: Sapporo Snow Festival

Photo: VectorA/Shutterstock.com

### Post



Post in Japan are well known for being organised and efficient. They offer domestic and international services and are easy recognisable by

the orange JP (Japan Post) logo. In every corner of the city you will also find the orange post box.

Photo: Andy Fuchs

### Public Transport



The city's three subway lines are Tozai-sen, Nanpoku-sen and Toho-sen. Subways is a convenient way to get around the city. Sapporo

City Transportation Bureau

Sapporo has a widespread system of bus lines.

-Hokkaido Chuo Bus  
+81 11 231 0500

-Sapporo Lincle Bus  
+81 11 231 0500

-JR Sapporo Bus

Photo: Pierre-Luc Auclair  
Address: Sapporo  
Internet: [www.city.sapporo.jp](http://www.city.sapporo.jp)

## Taxi



Taxis in Sapporo are safe and can be easily found around the city centre and at the designated taxi waiting area such as airport and major hotels.

All taxi has a meter which clearly indicates the fare. If the taxi accepts credit cards this will be shown visibly on the window. Before stopping a taxi, you should know where you are going since the postal address system is complex so make sure clearly tell the address or have an address written down on a paper to show the driver.

Some major taxi companies:

-Hokkaido Taxi&Van&Bus (English speaking drivers)

-Akan Taxi  
+81 154 67 3311

-Yohteitaxi  
+81 136 45 2740

Photo: ArrivalGuides

## Pharmacy



In Japan, drugs are mainly prescribed and issued by doctors, hospitals and clinics. Unfortunately, no pharmacy stays open 24

hours. The opening hours, according to every drug store, are usually from 9:00 a.m. to 10:00 p.m.

Some of the main city's drug stores are:

-Sapporo Drug Store Kitago

+81 11 876 1661

-Sapporo Drug Store Kotoni Ekimae

+81 11 633 7071

-KoKuMiN

+81 11 213 2661

Photo: Gemma Garner

## Telephone



Country code: + 81 Area code: 011

Photo: Jardson Almeida

## Electricity



In Japan the voltage is 100 Volt, different from EU (220V) and US (110V). The sockets are type A and B and the power plugs have two

flat-sided prongs.

Photo: Stirling Tschan

## Population

1.952 million (2015)

## Currency

1,000 yen = 10 x 100 yen Coins

## Newspapers

The Hokkaido Shimibun - English / Japanese  
Yomiuri Shimbun Hokkaido - Japanese

## Emergency numbers

Police: 110

Fire / Ambulance: 119

## Tourist information

- Hokkaido-Sapporo Tourist Information Center  
JR Sapporo West Concourse, Kita 6-jo Nishi 4-chome, Kita-ku, Sapporo  
Open daily 8:30 a.m. to 8:00 p.m.  
Telephone: +81 11 213 5088

- Odori Information Station



Odori Station, Odori Nishi 4-chome, Chuo-ku, Sapporo-shi  
Open daily 10:00 a.m. to 8:00 p.m.

- Sapporo International Communication Plaza  
MN Building, Kita 1 Nishi 3, Chuo-ku, Sapporo  
Mon-Sat 9am-5pm  
Closed on Sunday, National Holiday and from Dec 28th to  
Jan 4th  
Telephone: +81 11 211 3670

