



Photo: Sean Pavone/Shutterstock.com

# Tucson, Arizona



John Hoffman/Shutterstock.com

Visitors come to Tucson to take in the natural sunlit landscape of the Sonoran desert and the mountains that surround the city. They also endeavor to experience the cultural diversity of a city that boasts of Native American, Latin and European influences. Because of its unique geography, Tucson is an outstanding outdoor playground that offers a serene landscape with a wide range of terrain for hikers of all skill levels, rock climbers and cyclers.



Harry B. Lamb/Shutterstock.com



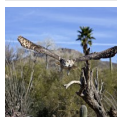
John Blanton/Shutterstock.com

## Featured



### Garden of Gethsemane

The Garden of Gethsemane is a beautiful garden containing religious sculptur...



### Arizona-Sonora Desert Museum

The Arizona-Sonora Desert Museum is not the usual zoo:



### Flandrau Science Center an...

All scientific fields are explored at this science center through events, ac...



### ASARCO Mineral Discovery C...

Learn about the copper industry at the ASARCO Mineral Discovery Center. It f...



### Biosphere 2

Take a tour of this "miniature earth" that researchers at the University of ...

## Top 5



### Pima Air & Space Museum

Explore the past 100 years of flight, including aircraft and spacecraft, as ...



### Colossal Cave Mountain Park

While Colossal Cave is this park's centerpiece, it is certainly not its only...



### Sabino Canyon

Whether you are a beginner looking for accessible trails, or an expert hiker...



### Mt. Lemmon Scenic Byway

In a short stretch of 27 miles, you can explore one of the most wide-ranging...



### Gaslight Theatre

Gaslight Theatre combines humor, music, live theatre and pub food. This comb...

## THE CITY



*SD Dirk/Flickr (image cropped)*

Tucson is the county seat of Pima County and comprises roughly half of the county's population, which is extremely diverse as a result of its American Indian, Spanish, European and Mexican heritage. Like many areas of the American Southwest, the territory that includes Tucson changed hands between the countries of Mexico and the United States until officially becoming part of the United States as part of the Gadsden Purchase in 1853.

The natural geography of Tucson and its surrounding areas is as diverse as its cultural heritage. It includes five minor mountain ranges, the Sonoran desert, the Coronado National Forest, and the Santa Cruz River, which still flows during the rainy season but is dry the rest of the year.

The city itself is home to five regions, each possessing unique notoriety. The Downtown and Central Tucson areas are full of historic neighborhoods and buildings, such as the Hotel Congress and the Fox Theater. This is also the home of the University of Arizona. Southern Tucson has a strong Mexican-American influence, Western Tucson is recognized for its natural attributes, and Northern and Eastern Tucson are rapidly developing areas with plenty of upscale shopping and dining.

## DO & SEE



*Jay Yuan/Shutterstock.com*

Whether you love the great outdoors or thrive in an urban setting, the Tucson area abounds with activities. Hikers and cyclists will feel right at home in the mountains or on the city's urban pathways. The more adventurous outdoors-man might enjoy doing a little bit of rock climbing.

Science nuts might want to check out one of the area's many observatories or Arizona University's ecological engineering marvel, the Biosphere 2. "Old Pueblo" is also home to several museums, galleries, and festivals that allow visitors to get a feel for Tucson's culture and history.

### Pima Air & Space Museum



Explore the past 100 years of flight, including aircraft and spacecraft, as showcased across this 80-acre museum. More than 300 means of transportation are on display, along with exhibits chronicling important milestones in air and space history.

Photo: Josh Hallett/Flickr(image cropped)  
Address: 6000 East Valencia Road, Tucson  
Opening hours: Daily: 9am-5pm  
Phone: +1 520 574 0462  
Internet: [www.pimaair.org](http://www.pimaair.org)



### Colossal Cave Mountain Park



While Colossal Cave is this park's centerpiece, it is certainly not its only attraction. It is also home to museums, various species of animals, public

trails, as well as camping and picnic areas. Some special events are organized during the year, like birding or walking tours.

Photo: Bill Morrow/Flickr.com(image cropped)

Address: 16721 East Old Spanish Trail, Vail

Opening hours: Daily: 8am-5pm

Phone: +1 520 647 7275

Internet: [www.colossalcave.com](http://www.colossalcave.com)

### Sabino Canyon



Whether you are a beginner looking for accessible trails, or an expert hiker looking for more challenging ones with backcountry access,

Sabino Canyon offers opportunities for everyone. With a peaceful and picturesque scenery, it boasts well-marked trails.

Photo: Nelson Sirlin/Shutterstock.com

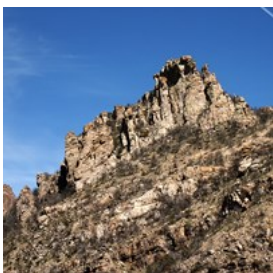
Address: 5700 N. Sabino Canyon Road, Tucson

Opening hours: Daily: 8am-4.30pm

Phone: +1 520 749 2861

Internet: <https://sabinocanyon.org>

### Mt. Lemmon Scenic Byway



In a short stretch of 27 miles, you can explore one of the most wide-ranging natural diversities of the whole country. You'll start from

the biological equivalent of the Mexican deserts and end up in the forests of Canada. Along the

highway there are plenty of pull-offs, trailheads, hikes and scenic overlooks.

Photo: Kenneth Sponsler/Shutterstock.com

Address: Mt Lemmon Highway, Tucson

Internet: [www.go-arizona.com/Mt-Lemmon-Scenic-Byway](http://www.go-arizona.com/Mt-Lemmon-Scenic-Byway)

More Info: About 15 miles northeast of Tucson in the Catalina Mountains (Catalina Highway becomes Hitchcock Highway and Mt Lemmon Highway)

### Gaslight Theatre



Gaslight Theatre combines humor, music, live theatre and pub food. This combinations is what makes it a popular venue for both tourists and

locals.

Photo: pdsci/Shutterstock.com

Address: 7010 E Broadway Blvd, Tucson

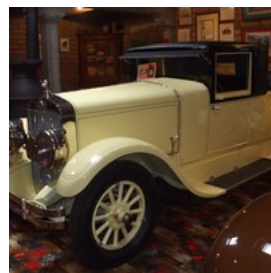
Opening hours: Monday-Thursday 10am-9pm;

Friday-Saturday 10am-10pm; Sunday 12pm-9pm

Phone: +1 520 886 9428

Internet: [www.thegaslighttheatre.com](http://www.thegaslighttheatre.com)

### Franklin Museum



Tucson hosts the largest collection of Franklin cars in the US. Here, you can delve into the history of the restored vintage cars from the golden age of the automobile. If you're not a car-lover, you can always check out its collection of ancient artifacts.

Photo: dedhed1950/Flickr(image cropped)

Address: 1405 East Kleindale Road Tucson

Opening hours: Wednesday-Saturday 10am - 4pm

Phone: +1 520 326 8038

Internet: [www.franklinmuseum.org](http://www.franklinmuseum.org)

### Catalina State Park



If you are looking for wild scenery not far from the downtown, Catalina State Park is the place to go. It offers endless opportunities for outdoor activities such as hiking and biking. You can choose one of the eight different trails and enjoy their breathtaking views.

Photo: Anton Foltin/Shutterstock.com  
Address: 11570 N Oracle Rd, Tucson  
Opening hours: Daily: 5am-10pm  
Phone: +1 520 628 5798  
Internet: [azstateparks.com/catalina](http://azstateparks.com/catalina)

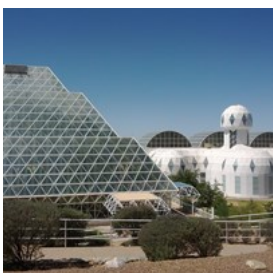
### Arizona-Sonora Desert Museum



The Arizona-Sonora Desert Museum is not the usual zoo: two miles of walking paths traverse this 21-acre conglomerate of 230 species of animals and 1,200 types of plants.

Photo: Florence-Joseph McGinn/Shutterstock.com  
Address: 2021 North Kinney Road, Tucson  
Opening hours: October-February 8:30am-5pm;  
March-September: 7:30am-5pm; June-August Sunday-Friday  
7:30am-5pm and Saturday 7:30am-10pm  
Phone: +1 520 883 2702  
Internet: [www.desertmuseum.org](http://www.desertmuseum.org)  
Email: [info@desertmuseum.org](mailto:info@desertmuseum.org)  
More Info: It takes two hours or more to visit the museum.

### Biosphere 2



Take a tour of this "miniature earth" that researchers at the University of Arizona use to explore the future of the planet. Experience the world's ecosystems, from the salty ocean to

the rainforest, replicated under Biosphere 2's roof. Guided tours are organized all year long.

Photo: Bruno Sanchez-Andrade Nuño/Flickr(image cropped)  
Address: 32540 S. Biosphere Road, Oracle  
Opening hours: Daily: 9am-4pm  
Phone: +1 520-621-4800  
Internet: [www.b2science.org](http://www.b2science.org)  
Email: [BIO2-INFO@EMAIL.ARIZONA.EDU](mailto:BIO2-INFO@EMAIL.ARIZONA.EDU)

### Fred Lawrence Whipple Observatory



Reservations are required for guided tours, but you can stop by the visitors center any day to explore its educational exhibits, including some

chronicling research projects conducted at the Arizona observatory. The FLWO is conducted under the auspices of the Harvard-Smithsonian Center for Astrophysics.

Photo: Wars/Wikimedia Commons(image cropped)  
Address: 670 Mount Hopkins Road, Amado  
Opening hours: Monday-Friday: 8.30am-4.30pm (visitors center)  
Phone: +1 520 879 4407  
Internet: [www.cfa.harvard.edu/facilities/flwo](http://www.cfa.harvard.edu/facilities/flwo)  
More Info: Located 35 miles south of Tucson at the base of Mt. Hopkins

### Reid Park Zoo



At Reid Park Zoo, you can meet animals from all over the world and participate in special zoo-themed events. Over 600,000 visitors come to Reid Park zoo every year to enjoy themselves on its 24-acre campus.

Photo: Nelo Hotsuma/Flickr.com(image cropped)  
Address: 3400 Zoo Court, Tucson  
Opening hours: October-May Daily: 9am-4pm,  
June-September Daily: 8am-3pm.

Phone: +1 520 791 3204  
Internet: [www.reidparkzoo.org](http://www.reidparkzoo.org)  
More Info: Free parking

### Garden of Gethsemane



The Garden of Gethsemane is a beautiful garden containing religious sculptures created by artist Felix Lucero after World War I.

Lucero himself fought in France during the war and dedicated his life to sculpting these statues after he was spared in battle.

Photo: Jewelzz/Shutterstock.com  
Address: 602 West Congress Street, Tucson  
Opening hours: From sunrise to sunset  
Phone: +1 520 791 4873  
More Info: Free

### ASARCO Mineral Discovery Center

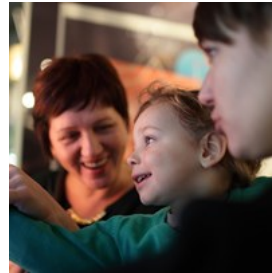


Learn about the copper industry at the ASARCO Mineral Discovery Center. It features numerous exhibits, a

Discovery Theater, a garden and a gift shop with jewelry by local artisans. Tours of the Mission Mine are also available.

Photo: Jose L. Stephens/Shutterstock.com  
Address: 1421 West Pima Mine Road, Sahuarita  
Opening hours: Tuesday-Saturday: 9am-5pm, mine tours at 9.30am, 11am, 12.30pm, 2pm and 3.30pm  
Phone: +1 520 625 7513  
Internet: [www.asarco.com](http://www.asarco.com)  
More Info: Hours are subject to change. Reservation is recommended for mine tours.

### Children's Museum Tucson



New fun and educational exhibits are opening up all the time at this museum devoted to promoting joy for the entire family. Exhibits and special events engage children in learning about the environment, biology, history and more.

Photo: Chubykin Arkady/Shutterstock.com  
Address: 200 South 6th Avenue, Tucson  
Opening hours: Tuesday-Friday: 9am-4pm, Weekends: 10am-5pm  
Phone: +1 520 792 9985  
Internet: [www.childrensmuseumtucson.org](http://www.childrensmuseumtucson.org)

### Degrazia Gallery In the Sun



Built across ten acres at the foot of the Santa Catalina Mountains, these buildings are veritable works of art and house paintings by Ettore "Ted"

DeGrazia and other artists. DeGrazia, who created the gallery in 1950, used his artwork to depict Arizona's life and people.

Photo: Sonoflightning(image cropped)  
Address: 6300 North Swan Road, Tucson  
Opening hours: Daily: 10am-4pm  
Phone: +1 520 299 9191  
Internet: [www.degrazia.org](http://www.degrazia.org)  
Email: [cs@degrazia.org](mailto:cs@degrazia.org)

### Flandrau Science Center and Planetarium



All scientific fields are explored at this science center through events, activities, and ever-changing exhibits. It is located on the



University of Arizona's campus and it is also home to the Mineral Museum and to southern Arizona's only Planetarium Theater.

Photo: Chris Tengi/Flickr.com(image cropped)

Address: 1601 East University Boulevard, Tucson

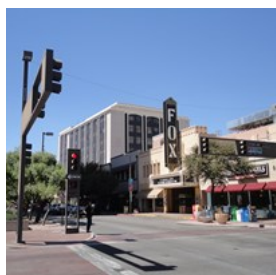
Opening hours: Monday-Thursday: 9am-5pm, Friday: 9am-10pm, Saturday: 10am-10pm, Sunday: 12pm-5pm.

Phone: +1 520 621 4516

Internet: [www.flandrau.org](http://www.flandrau.org)

More Info: Hours can vary depending on season

### The Fox Tucson Theatre



The Fox Tucson Theatre, built in the 1930s, is on the National Register of Historic Places. The theater now screens movies, hosts concerts

and serves as event space.

Photo: Paul Sableman/Flickr(image cropped)

Address: 17 West Congress Street, Tucson

Opening hours: Tuesday-Friday: 12pm-6pm (box office). Also open two hours prior to performance, also on Mondays & Weekends.

Phone: +1 520 547 3040

Internet: [www.foxtucsontheatre.org](http://www.foxtucsontheatre.org)

### The Arizona Trail



More than 800 miles traverse the cities, deserts, canyons, and mountains of Arizona from the border of Mexico to the border of

Utah. Guided hikes, mountain bike rides, and horse rides are available. No matter your interests, the Arizona Trail Association can help you plan your trip.

Photo: Shackleford-Photography/Shutterstock.com

Address: 534 North Stone Avenue, Tucson

Phone: +1 602 252 4794

Internet: [www.aztrail.org](http://www.aztrail.org)

## DINING



*Junial Enterprises/Shutterstock.com*

Mexican and Southwestern cooking permeates the food scene in Tucson but is by no means your only choice. The city has become a major culinary hub with distinguished chefs serving up contemporary and classic cuisine. If classic Americana is what you are looking for, you will still find that here along with Asian and European flavors.

### Flying V Bar & Grill



At Flying V Bar & Grill, you can get fresh meals prepared with locally sourced ingredients. The cuisine is a mix of traditional American

dishes with Spanish & Mexican influences. Try their famous homemade guacamole and the delicious cornbread and enjoy the spectacular view from their patio.

Photo: asife/Shutterstock.com

Address: 7000 N Resort Dr, Tucson

Opening hours: Thu-Fri 5pm-9, Sat 8am-11am / 5pm-9pm, Sun 10am-1pm

Phone: +1 520 615 5495

Internet:

[www.loewshotels.com/ventana-canyon/dining/restaurant](http://www.loewshotels.com/ventana-canyon/dining/restaurant)

### Vivace



Vivace is situated in a gorgeous building with outside tables and spectacular views of the city. They serve genuine Northern Italian cuisine in downtown Tucson and boast a lengthy wine list.

Photo: vpilkauskas/Shutterstock.com

Address: 6440 N Campbell Ave, Tucson

Opening hours: Mon-Thu 11:30am-8pm, Fri & Sat 11:30am-8:30pm, Sun closed

Phone: +1 520 795 7221

Internet: [www.vivacetucson.com](http://www.vivacetucson.com)

### It's Greek To Me



The authentic Greek setting and the Santorini painting on the ceiling in this small, intimate yet upbeat place will make you forget you are not in Greece. Of course, you'll find plenty of specialties on their menu, like tzatziki, souvlaki and moussaka.

Photo: zoryanchik/Shutterstock.com

Address: 15920 N Oracle Rd 120, Tucson

Opening hours: Tue-Sat 3pm-7pm

Phone: +1 520 825 4199

Internet: [www.itsgreekto mecatalina.com/](http://www.itsgreekto mecatalina.com/)

### The Tasteful Kitchen



It's not only vegans and vegetarians who'll love this place. The restaurant serves creative and tasty dishes made with seasonal, organic, locally grown produce. Raw and gluten-free options available as well.

Photo: puttography/Shutterstock.com

Address: 722 N Stone Ave, Tucson

Opening hours: Mon 10am-3:30pm, thu 2:30pm-5:30pm

Phone: +1 520 250 9600

Internet: [thetastefulkitchen.com](http://thetastefulkitchen.com)

### Fleming's Prime Steakhouse & Wine Bar



This steakhouse serves excellent steaks and cuts of beef. You can try their bone-in filet or another specialty and check out their extensive wine list

to choose the drink that best accompanies your meal.

Photo: stockcreations/Shutterstock.com

Address: 6360 N Campbell Ave, Tucson

Opening hours: Sun 4pm-9pm, Mon-Sat 4pm-10pm

Phone: +1 520 529 5017

Internet: [www.flemingssteakhouse.com/locations/az/tucson](http://www.flemingssteakhouse.com/locations/az/tucson)

### 47 Scott



In addition to fresh, seasonal menu items, this downtown bistro also offers micro-brews and unique cocktails. The cuisine can be

characterized as contemporary American, with twists on some of your favorite comfort classics. Their happy hour is from 4 to 6pm.

Photo: Mo Azizi/Shutterstock.com

Address: 47 North Scott Avenue, Tucson

Opening hours: Tue-Thu 4pm-9pm, Fri & Sat 4pm-10pm,

Sun & Mon closed

Phone: +1 520 624 4747

Internet: [www.47scott.com](http://www.47scott.com)

### BK Carne Asada & Hot Dogs



After taking home a win on the Travel Channel's 'Food Wars', BK garnered bragging rights as top dogs for their Sonora style hot dogs. Their

menu also includes burgers, salads, breakfast dishes and a variety of Tex-Mex style offerings.

Photo: Prostock-studio/Shutterstock.com

Address: 5118 South 12th Avenue, Tucson

Opening hours: Sun-Wed 10am-9pm, Thur 10am-10pm, Fri & Sat 10am-11pm

Phone: +1 520 295 0105

Internet: [www.bktacos.com](http://www.bktacos.com)

More Info: Additional location at 2680 North 1st Avenue, Tucson

### Elliott's On Congress



Is it a restaurant with great drinks or a bar with great food? Elliott's On Congress is an American pub with the best of both worlds. Check their event

calendar to discover their special offers and events featuring live music, karaoke, happy hours or discounted drinks.

Photo: nikitabuida/Shutterstock.com

Address: 135 East Congress Street, Tucson

Opening hours: Mon-Thu 4pm-2am, Fri-Sun 11am-2am

Phone: +1 520 622 5500

Internet: [www.elliottsoncongress.com](http://www.elliottsoncongress.com)

### Reilly Craft Pizza and Drink



Thinking outside the box, Reilly's is an Italian restaurant that offers something beyond the basic pepperoni pie. It is likely that you have never

seen a pizza topped with such unusual

ingredients as squash, truffle cheese, broccoli, lemon, and eggplant. You might want to try one of their numerous tap wines or beers as well, all while seating at one of their indoor or outdoor tables.

Photo: Yulia Grigoryeva/Shutterstock.com

Address: 101 East Pennington Street, Tucson

Opening hours: Mon-Thu 11am-10pm, Fri 11am-11pm, Sat 12pm-11pm, Sun 12pm-9pm

Phone: +1 520 882 5550

Internet: [www.reilypizza.com](http://www.reilypizza.com)

### Union Public House



Union Public House serves up American cuisine made from fresh, sustainable ingredients. If you want to have a nice Sunday brunch, this is the place to go. Also, everyday there is a discounted or special drink available.

Photo: Tatiana Bralnina/Shutterstock.com

Address: 4340 North Campbell Avenue, Suite 103, Tucson

Opening hours: Mon-Fri 11am-2am, Sat & Sun 10am-2am

Phone: +1 520 329 8575

Internet: [www.uniontucson.com](http://www.uniontucson.com)

### The Parish



The Parish is a homey gastropub that serves variations of your favorite Southern-style dishes. They also offer lively Sunday brunches and

weekdays happy hours, as well as late night drink specials at the weekend. For some added local flair, they often showcase the talents of musicians and artists from the area.

Photo: Quality Stock Arts/Shutterstock.com

Address: 6453 North Oracle Road, Tucson

Opening hours: Tue-Thu 11am-9pm, Fri & Sat 11am-10pm,



Sun 11am-9pm, Mon closed  
Phone: +1 520 797 1233  
Internet: [www.theparishtucson.com](http://www.theparishtucson.com)

### Chef Alisah's Restaurant



Chef Ahmet Alisah prepares fresh European and Bosnian food at her restaurant. The cevapi, Bosnian-style sausages, are a favorite of the chef.

Photo: Andrija Ivanovic/Shutterstock.com  
Address: 5931 North Oracle Road, Tucson  
Opening hours: Tue-Sun 10:30am-1:30pm / 5:30pm-9:30pm, Mon closed  
Phone: +1 520 887 5305  
Internet: [www.alisahrestaurant.com](http://www.alisahrestaurant.com)

### D's Island Grill JA



If you need a break from the stream of Mexican-inspired restaurants but want something different from the typical American fare,

you could try the Jamaican dishes at D's Island Grill JA. They have become locally famous for their jerk burger. You can call or order online to have your food delivered right to you.

Photo: Fanfo/Shutterstock.com  
Address: 3156 East Fort Lowell Road, Tucson  
Opening hours: Mon-Thu 11am-8pm, Fri-Sat 11am-9pm, Sun closed  
Phone: +1 520 861 2271  
Internet: [www.dsislandgrilltucson.com](http://www.dsislandgrilltucson.com)

## CAFES



*Family Business/Shutterstock.com*

Vying for the accolades of the University of Arizona's student population keeps the coffee brewers of the city at the top of their game. Many coffee shops serve food and keep long hours to accommodate the college crowd. Cafés in Tucson are unique entities that appeal to a variety of clientele. The search for the one that best appeals to your tastes may yield more than one result.

### Beyond Bread



Enjoy breakfast, lunch, or dinner at this locally-owned cafe, which offers over 30 varieties of freshly baked bread. You can taste it in a variety of recipes, from sandwiches and salads to soups and omelets.

Photo: Timmary/Shutterstock.com  
Address: 3026 North Campbell Avenue, Tucson  
Opening hours: Sun-Thu 7am-6pm, Fri-Sat 7am-7pm  
Phone: +1 520 322 9965  
Internet: [www.beyondbread.com](http://www.beyondbread.com)  
More Info: Additional locations at 421 W. Ina Road (+1 520 461 1111) and 6260 E. Speedway Blvd. (+1 520 747 7477)

### Cafe 54



Named after its location on Pennington Street in Downtown Tucson, non-profit Cafe 54 serves an ever-changing lunch menu inspired by the fresh ingredients available during the week. In addition to serving delicious food to Tucsonans, Cafe 54 also serves the community as an employment-training program for individuals with mental illness.

Photo: Africa Studio/Shutterstock.com  
Address: 54 East Pennington Street, Tucson  
Opening hours: Mon-Fri 11am-2pm  
Phone: +1 520 622 1907  
Internet: [www.cafe54.org](http://www.cafe54.org)

### Cafe à la C'Art



Cafe à la C'Art is a country-style cafe and bakery located on the grounds of the Tucson Museum of Art. Here you can have a meal surrounded by art or, if you prefer, dine outside in their garden patio.

Photo: oneinchpunch/Shutterstock.com  
Address: 150 North Main Avenue, Tucson  
Opening hours: Wed-Fri 10am-3pm, Sat & Sun 8am-3pm  
Phone: +1 520 628 8533  
Internet: [www.cafealacarttucson.com](http://www.cafealacarttucson.com)

### Cafe Desta



Cafe Desta serves authentic Ethiopian cuisine. It is also a great place to get a cup of coffee or tea. All meals are served with injera, the biggest staple food of the country.

Photo: ciel962/Shutterstock.com  
Address: 758 South Stone Avenue, Tucson  
Opening hours: Daily: 11am-9pm  
Phone: +1 520 370 7000

### Espresso Art Café



Hookah lounge meets coffee bar at this cafe, popular among University of Arizona students because of its proximity to campus, late hours, and delicious food. Espresso Art Café also hosts comedy and music shows, karaoke nights and other kinds of entertaining events.

Photo: Tsuguliev/Shutterstock.com  
Address: 942 East University Boulevard, Tucson  
Opening hours: Sun-Thu 10am-11pm, Fri-Sat 10am-12am  
Phone: +1 520 624 4126  
Internet: [www.espressoartcafe.com](http://www.espressoartcafe.com)

### Coyote Pause Cafe



The menu at Coyote Pause Cafe offers simple, healthy meals with a Southwestern flair. Their breakfast menu, featuring eggs cooked in a variety of ways, is available all day long. It is located in the Cat Mountain Station shopping center near Spencer's Observatory.

Photo: iodrakon/Shutterstock.com  
Address: 2740 South Kinney Road, Tucson  
Opening hours: Daily 7:30am-2:30pm  
Phone: +1 520 883 7297  
Internet: [www.catmountainstation.com/coyote\\_pause\\_cafe.html](http://www.catmountainstation.com/coyote_pause_cafe.html)

### Cup Cafe



Known colloquially as "The Cup", Cup Café is located within Hotel Congress. It is open every day of the year and serves breakfast, lunch, and dinner. Happy hour time is from 4 to 6pm Thursday through Saturday.

Photo: wutzkohphoto/Shutterstock.com

Address: 311 East Congress Street, Tucson

Opening hours: Mon-Wed 8am-3pm, Thu-Sat 8am-9pm, Sun 8am-3pm. Note: Thu-Sat closed 3pm-4pm

Phone: +1 520 622 8848

Internet: [www.hotelcongress.com/food](http://www.hotelcongress.com/food)

### Claire's Cafe and Art Gallery



Art lovers and breakfast enthusiasts converge at Claire's, a cafe housing original artwork and serving breakfast all day. All of your favorites are represented on the menu here: from pancakes, waffles and omelettes in the morning, to burgers, fries, sandwiches and salads for lunch and dinner.

Photo: Billion Photos/Shutterstock.com

Address: 16140 North Oracle Road, Catalina

Opening hours: Tue-Sun 8am-2pm, Mon closed

Phone: +1 520 825 2525

Internet: [www.clairescafe.net](http://www.clairescafe.net)

Email: [ClaireCafe@Comcast.net](mailto:ClaireCafe@Comcast.net)

### Mi Nidito



A favorite stop for celebrities visiting Tucson, Mi Nidito has been serving delicious Mexican food since it opened its doors in 1952.

Former U.S. President Bill Clinton and singers Julio and Enrique Iglesias count themselves among the famous customers to have eaten here.

Photo: Manu Padilla/Shutterstock.com

Address: 1813 South 4th Avenue, Tucson

Opening hours: Wed-Thu 11am-9:30pm, Friday-Sat 11am-11:30pm, Sun 11am-9:30pm

Phone: +1 520 622 5081

Internet: [www.minidito.net](http://www.minidito.net)

### Teresa's Mosaic Cafe



Beautiful handmade mosaic table tops are a highlight of this quaint Mexican cafe. Of course the food isn't anything to sneeze at. Teresa's was featured on an episode of the Food Network's Throwdown! with Bobby Flay, in which they competed against the celebrity chef in the preparation of huevos rancheros.

Photo: cobraphotography/Shutterstock.com

Address: 2456 North Silver Mosaic Drive, Tucson

Opening hours: Mon-Sat 7:30am-9pm, Sun 7:30am-2pm

Phone: +1 520 624 4512

### Epic Cafe



Epic Cafe is a family-owned,

environmental-friendly

place that brings gourmet

coffee to a whole new

level. Try a cup with a

made-from-scratch bakery item or a sandwich.

Photo: amenic181/Shutterstock.com

Address: 745 North 4th Avenue, Tucson

Opening hours: Tue-Fri 7:30am-6pm, Sat & Sun 8am-6pm, Mon closed

Phone: +1 520 624 6844

Internet: [www.epiccafe.com](http://www.epiccafe.com)



### Sunny Side Up Cafe



A casual eatery with a classic diner feel, Sunny Side Up offers classic American food. It's a great place to grab breakfast, especially if

you wake up early in the morning: they open at 5:30am.

Photo: Peter Kim/Shutterstock.com

Address: 15800 North Oracle Road, Catalina

Opening hours: Daily 5:30am-2:30pm

Phone: +1 520 818 1083

## BARS & NIGHTLIFE



Charles T. Peden/Shutterstock.com

Night owls can find laid back spots or raucous parties. The city's Latin influence can be seen around town in music and dancing at restaurants and nightclubs. In addition to a bevvy of night spots catering to the college crowd, Tucson is also home to several gay-friendly bars and clubs. Local watering holes compete for the dollars of the local college crowd by offering a bevvy of entertainment options.

### Club Congress



Almost every night, live music creates a fun atmosphere for a drink with friends in this bar located within Tucson's Hotel Congress. Other entertainment options here include dancing to music from resident and guest DJs and special events like karaoke and game nights.

Photo: stillwellmike/Flickr.com(image cropped)

Address: 311 East Congress Street, Tucson

Phone: +1 520 622 8848

Internet: [www.hotelcongress.com](http://www.hotelcongress.com)

Email: [reservations@hotelcongress.com](mailto:reservations@hotelcongress.com)

### Che's Lounge



Like its decor, the patronage of Che's Lounge is a mish-mash of all kinds of people. One thing everyone has in common is the love for a

good drink. Che's offers creative seasonal fruit cocktails with watermelon, blueberry and the like.

Photo: Maksim Fesenko/Shutterstock.com

Address: 350 North 4th Avenue, Tucson

Opening hours: Daily 12pm-2am

Phone: +1 520 623 2088

Internet: [www.cheslounge.com](http://www.cheslounge.com)

### Risky Business



With two locations in Tucson and convenient hours, Risky Business is a great place to have a meal, unwind with friends, or sip a drink while catching a game. Its easygoing climate draws both adults looking for some late-night fun

and families who want to have a nice, relaxing meal together.

Photo: Kzenon/Shutterstock.com

Address: 6866 East Sunrise Drive, Tucson

Opening hours: Daily 11am-9pm

Phone: +1 520 584 1610

Internet: riskybusinessstucson.com

More Info: Additional location at 8848 East Tanque Verde Road, Tucson

### Tap and Bottle



Tap & Bottle offers exactly what its name implies—a plethora of beers and wines with something to satisfy any palate. Show up for a tasting to learn about the current beer and wine offerings. The staff is very knowledgeable and passionate about beer.

Photo: fotorince/Shutterstock.com

Address: 403 N 6th Ave 135, Tucson

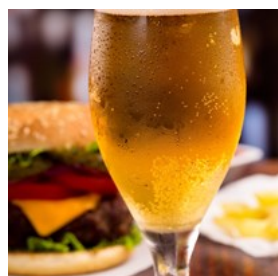
Opening hours: Sun-Tue 12pm-7pm, Wed-Thu 12pm-9pm, Fri & Sat 12pm-10pm

Phone: +1 520 344 8999

Internet: www.thetapandbottle.com

More Info: Additional location at 7254 N Oracle Rd, Tucson

### Barrio Brewing Co



Barrio Brewing Co is a trendy bar tucked away from the hustle and bustle of Tucson. They have an extensive selection of crafted beer and typical pub food. Don't miss the happy-hour specials.

Photo: Nitr/Shutterstock.com

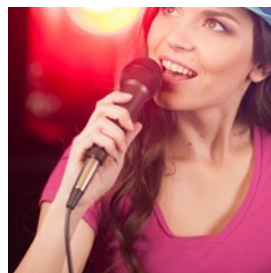
Address: 800 E 16th St, Tucson

Opening hours: Sun-Thu 11am-10pm, Fri-Sat 11am-11pm

Phone: +1 520 791 2739

Internet: barriobrewing.com

### Sky Bar Tucson



Sky Bar is a college bar with telescopes set up outside. Get amazing views of the heavens, the sunset or the city at night while enjoying its relaxed and lively atmosphere. On Wednesday nights it's open mic night from 7pm. You might get lucky and catch an astronomy lecture while you're there.

Photo: BlueSkyImage/Shutterstock.com

Address: 536 N 4th Ave, Tucson

Opening hours: Monday-Sunday 9am-2am

Phone: +1 520 622 4300

Internet: skybartucson.com

### LAFFS Comedy Club



LAFFS Comedy Club has been bringing nationally-recognized stand up actors to Tucson since 1988. Visit their website for a calendar of upcoming performances, as well as to check out their extensive selection of drinks.

Photo: Carlos E. Santa Maria/Shutterstock.com

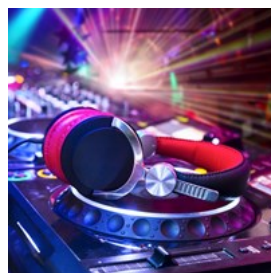
Address: 2900 East Broadway Boulevard, Tucson

Opening hours: Doors at 7pm. Shows usually begin at 8pm and 10:30pm

Phone: +1 520 323 8669

Internet: www.laffstucson.com

### Monsoon Night Club



There is no cover for ladies who want to enjoy a night dancing to live music from great bands and DJs at Monsoon Night Club, a spacious venue located at the Desert Diamond Casino.

Photo: Maxim Blinkov/Shutterstock.com

Address: 7350 South Nogales Highway, Tucson

Opening hours: Fri-Sat 9pm-2am

Phone: +1 520 294 7777

Internet: [www.ddcaz.com](http://www.ddcaz.com)

### The Shelter Cocktail Lounge



Whether you think it's tacky or chic with its JFK memorabilia and pinball machines, you won't be able to take your eyes off of the funky, retro decor

while you enjoy a drink or a game of pool. The Shelter usually plays rock music from all decades, but they occasionally host live musical performances. They are said to serve one of the best martinis in town.

Photo: Hitdelight/Shutterstock.com

Address: 4155 East Grant Road, Tucson

Opening hours: Daily 3pm-2am

Phone: +1 520 326 1345

### Scott & Co.



Enjoy a hand-crafted cocktail in an intimate setting at Scott & Co. It is located just beside the owners' restaurant, 47 Scott.

Photo: Kondor83/Shutterstock.com

Address: 47 North Scott Avenue, Tucson

Opening hours: Tue-Thu 4pm-9pm, Fri & Sat 4pm-10pm, Sun & Mon closed

Phone: +1 520 624 4747

Internet: [www.47scott.com](http://www.47scott.com)

### The Surly Wench



During the day, The Surly Wench is a neighborhood pub with a wide selection of food and drinks. At night, it becomes a lively entertainment venue

featuring industrial/goth music and burlesque shows. Check out their calendar for a full listing of the performances.

Photo: Africa Studio/Shutterstock.com

Address: 424 North 4th Avenue, Tucson

Opening hours: Thu 4pm-10ish, Fri 4pm-12ish, Sat 2pm-2am, Sun 2pm-10ish

Phone: +1 520 882 0009

Internet: [www.surlywenchpub.com](http://www.surlywenchpub.com)

Email: [surlywenchpub@yahoo.com](mailto:surlywenchpub@yahoo.com)

### IBT's



IBT's is located within minutes of Downtown and has been voted best gay bar in Tucson several times over. There are many events to look

forward to every week, including IBT's renowned drag shows.

Photo: Patrizia Tilly/Shutterstock.com

Address: 616 North 4th Avenue, Tucson

Opening hours: Daily 4pm-11pm

Phone: +1 520 882 3053

Tickets: [www.eventbrite.com/o/ibts-bar-food-3316649158](https://www.eventbrite.com/o/ibts-bar-food-3316649158)

Internet: [www.ibtstucson.com](http://www.ibtstucson.com)

Email: [ibtstucson@gmail.com](mailto:ibtstucson@gmail.com)



## SHOPPING



kikovic/Shutterstock.com

While there are plenty of malls in Tucson, any shopper would be remiss to overlook all of the unique shopping districts in Tucson. Fourth Avenue, in particular, is known to shoppers for its more than 100 eclectic and locally-owned shops and restaurants. Downtown Tucson is your center for the city's artistic offerings.

### Gallery West



more.

Gallery West is a Foothills gallery showcasing and selling antique and modern Native American art. Here, you will find sculpture, paintings and

Photo: dashtik/Shutterstock.com

Address: 6420 North Campbell Avenue, Tucson

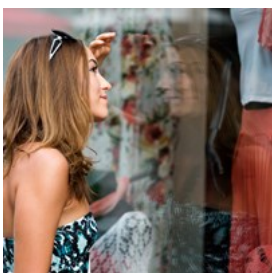
Opening hours: Wednesday-Saturday 10am - 4pm

Phone: +1 520 529 7002

Internet: [www.indianartwest.com](http://www.indianartwest.com)

Email: [info@indianartwest.com](mailto:info@indianartwest.com)

### Casas Adobes Plaza



Shoppers find a unique experience at Casas Adobes Plaza, where upscale shopping meets fine dining and artistic appreciation, all of this in

the beautiful setting created by an apprentice of architect Josias Joesler. Events are also hosted regularly in the Center Courtyard.

Photo: Ferenc Cegledi/Shutterstock.com

Address: 7001 North Oracle Road, Tucson

Opening hours: Monday-Saturday: 10am-6pm, Sunday: 11am-4pm

Phone: +1 520 299 2610

Internet: [www.casasadobesplaza.com](http://www.casasadobesplaza.com)

### 4th Avenue



There are over 100 locally-owned businesses, each wonderful and unique, in this downtown historic district. To add to the vibrant atmosphere,

4th Avenue is the locale of seasonal street fairs, which are filled with food, music, a kids art pavilion, and more.

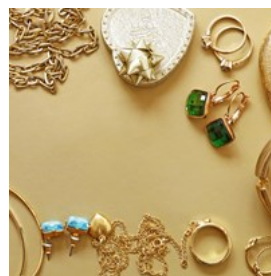
Photo: jimmy thomas/Flickr.com(image cropped)

Address: 4th Avenue, Tucson

Phone: +1 520 624 5004

Internet: [www.fourthavenue.org](http://www.fourthavenue.org)

### Cat Mountain Station



Local artisans have made the storefronts of this (once business center) Cat Mountain Station their own. It is home to the Cat Mountain Lodge,

the Coyote Pause Cafe, and to some locally-owned shops peddling everything from jewelry and clothing to regional art and decor.

Photo: Dream79/Shutterstock.com

Address: 2740 South Kinney Road, Tucson

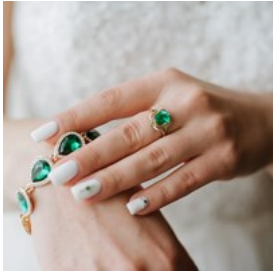
Opening hours: Monday-Sunday: 9am-4pm

Phone: +1 520 578 4272

Internet: [www.catmountainstation.com](http://www.catmountainstation.com)

Email: [contact@catmountainstation.com](mailto:contact@catmountainstation.com)

### American Gem Trade Association



Every year, the American Gem Trade Association hosts the AGTA GemFair in Tucson, showcasing beautiful gemstones and jewelry. The GemFair

features an exhibit hall where you can peruse products as well as seminars pertaining to the trade. The GemFair usually takes place in February.

Photo: marienalien/Shutterstock.com

Address: 260 South Church Avenue, Tucson

Phone: +1 214 742 4367

Internet: [www.agta.org](http://www.agta.org)

Email: [info@agta.com](mailto:info@agta.com)

### Desert Artisans' Gallery



Art in a variety of forms created by local artists can be purchased at this cooperative gallery. Since the artists themselves run the gallery, you may

purchase a piece directly from the artist.

Photo: Hannamariah/Shutterstock.com

Address: 6536 East Tanque Verde Road, Tucson

Opening hours: Monday-Saturday: 10am-5pm, Sunday:

10am-1:30pm

Phone: +1 520 722 4412

Internet: [www.desertartisansgallery.com](http://www.desertartisansgallery.com)

### El Con Center



Find everything you need at this open-air shopping center from shopping to dining and entertainment. Anchor stores include JC Penney, Target, Home

Depot and Walmart.

Photo: EpicStockMedia/Shutterstock.com

Address: 3601 East Broadway Boulevard, Tucson

Opening hours: Daily: 10am-9pm

Phone: +1 520 795 9958

### Foothills Mall



After a great day of finding deals at the many outlet and boutique stores, catch a flick at the theater or have a meal in the food court of one of the mall's restaurants. Mall amenities include a kids' play area, stroller and wheelchair rentals and WiFi. You'll find stores like Barnes & Noble Booksellers, Claire's Accessories, Levi's Outlet, NYS Collection and American Eagle Outfitters.

Photo: mimagephotography/Shutterstock.com

Address: 7401 North La Cholla Boulevard, Tucson

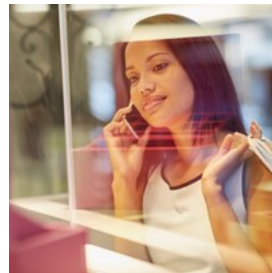
Opening hours: Monday-Saturday: 10am-9pm, Sunday: 11am-6pm

Phone: +1 520 742 7191

Internet: [www.shopfoothillsmall.com](http://www.shopfoothillsmall.com)

Email: [foothills@bourncompanies.com](mailto:foothills@bourncompanies.com)

### Main Gate Square



Main Gate Square is like a small town within itself with shopping, dining and special events in a pedestrian-friendly setting. It is located

within walking distance from the University of Arizona.

Photo: mavo/Shutterstock.com

Address: 814 East University Boulevard, Tucson

Opening hours: 24/7

Phone: +1 520 622 8613

Internet: [www.maingatesquare.com](http://www.maingatesquare.com)

Email: [info@maingatesquare.com](mailto:info@maingatesquare.com)

### Park Place Mall



In addition to several popular stores and eateries, customers of this mall also have access to wireless Internet, a children's play area, nursing lounge and a seating area. Check online to find sales and deals. Shops such as Crocs, Gap, Guess, H&M, Hollister Co., Icing, M.A.C. Cosmetics, Macy's, Old Navy, Pandora, Sears and Victoria's Secret can be found here.

Photo: Milles Studio/Shutterstock.com

Address: 5870 East Broadway Boulevard, Tucson

Opening hours: Monday-Saturday: 10am-9pm, Sunday: 11am-6pm

Phone: +1 520 747 7575

Internet: [www.parkplacemall.com](http://www.parkplacemall.com)

### St. Philip's Plaza



Known for its architectural beauty, St. Philip's Plaza is also a shopping, artistic, and professional hub of Tucson. Peruse the shops or simply relax in the plaza, which is the epitome of serenity with its fountains, rose gardens and Eucalyptus trees.

Photo: Olena Chukhill/Shutterstock.com

Address: 4280 North Campbell Avenue, Tucson

Opening hours: Monday-Sunday: 9am-6pm

Phone: +1 520 529 2775

Internet: [www.stphilipsplaza.com](http://www.stphilipsplaza.com)

Email: [management@stphilipsplaza.com](mailto:management@stphilipsplaza.com)

### Sunshine Mile



Two miles of shopping, dining, and services that you will find nowhere other than this historic district. The Sunshine Mile is known for its Mid-Century Modern architecture and vibrant cultural influences.

Photo: DW labs Incorporated/Shutterstock.com

Address: 2612 East Broadway Boulevard, Tucson

Phone: +1 520 319 0888

Internet: [www.sunshinemile.com](http://www.sunshinemile.com)

### Tucson Mall



The largest mall in Tucson offers all of your favorite brands in one convenient location. Brands represented here that you will likely recognize are: Gap, Sears, Banana Republic, Justice, Macy's and Old Navy. If you are feeling hungry, you can just pop into one of the restaurants located in the mall.

Photo: Eric McCarthy/Flickr.com(image cropped)

Address: 4500 North Oracle Road, Tucson

Opening hours: Monday-Saturday: 10am-9pm, Sunday 12am-6pm

Phone: +1 520 293 7330

Internet: [www.tucsonmall.com](http://www.tucsonmall.com)



## TOURIST INFORMATION



Henryk Sadura/Shutterstock.com

### Tucson International Airport (TUS)



The Tucson International Airport (TUS) is about 10 miles south from downtown Tucson and served by six airlines that fly nonstop to 15 major

U.S. cities, including Chicago, Los Angeles and Atlanta.

#### Car rentals

On-site you will find nine car rentals such as Hertz, Avis, Budget and Enterprise. These car rental agencies can be found in the Rental Car Facility east of the Terminal.

#### Bus

To travel by public transport from the airport you can use Tucson region's public transit system called Sun Tran. It usually runs every 30 minutes from 5:30 am to 10:30 pm on weekdays and every 60 minutes from 6 am to 7 pm during weekends and holidays. The bus stop is placed directly west of the terminal on the Departures Roadway. You can either pay cash (exact change is required) or with SunGO fare card which you can purchase in advance and have mailed to you before the trip.

#### Shuttle

Arizona Stagecoach offers shared-ride van services throughout the Tucson region. Their counter is in the baggage claim area. Many hotels and resorts also offer shuttle services, but make sure to book in advance.

#### Taxi

Another option to travel from the airport is by taxi. There are four taxi companies serving from the airport which are situated on the Commercial Roadway outside the baggage claim area.

Photo: Juan Garces

Address: 7250 S Tucson Boulevard, Tucson

Phone: +1 520 573 8100

Internet: [www.flytucson.com](http://www.flytucson.com)

### Passport / Visa



Citizens of the Schengen countries, the United Kingdom, Ireland, Canada, Australia, New Zealand, Singapore, Japan, South Korea,

Taiwan and the Kingdom of Brunei can visit the United States for up to 90 days without applying for a visa (as well as citizens of Andorra, Lichtenstein, Monaco and San Marino). Citizens of these countries must obtain an ESTA (Electronic System for Travel Authorization) before traveling. All other travelers must obtain a visa before visiting the United States. International travelers need a passport that is valid for at least 3 months after the end of their intended trip in order to enter the country.

Photo: TukTuk Design/Shutterstock.com

### Best Time to Visit



Late spring and fall are the best times to visit Tucson, when the temperature is pleasant and the prices are affordable. During

summer you can find some great deals, but beware of the hot temperatures and frequent rain. On the other hand, winter here is quite mild, which makes it the peak season for tourists in Tucson.

Photo: VectorA/Shutterstock.com

### Public Transportation



SunTran operates the public bus system in Tucson. They operate 40 fixed routes. You can either pay your fair by having a SunGO Card or

pay with the Go Tucson app. If paying in cash, the farebox validates bills and coins.

Website: [www.suntran.com](http://www.suntran.com)

The Sun Link Tucson Streetcar links five major activity centers—the University of Arizona, Fourth Avenue, Main Gate Square, Downtown Tucson, and the Mercado District—in central Tucson. Cash is not accepted on the streetcar. You can buy a 1-Day SunGO ticket and once you have activated it, it is valid for 24 hours. Tucson Streetcar starts to operate at 7am on weekdays and at 8am on weekends.

Website: [www.sunlinkstreetcar.com](http://www.sunlinkstreetcar.com)

Photo: Pierre-Luc Aucla

Address: 3920 N. Sun Tran Boulevard

Opening hours: Monday-Friday: 6am-7pm, Saturday-Sunday: 8am-5pm

Phone: +1 520 623 4301 (Administrative office)

Internet: [www.suntran.com](http://www.suntran.com)

Email: [suntraninfo@tucsonaz.gov](mailto:suntraninfo@tucsonaz.gov)

### Post Office



There are several branches of the United States Postal Service located throughout Tucson.

Photo: Andy Fuchs

Address: 1501 S Cherrybell Stra 205, Tucson

Opening hours: Monday-Friday: 9am-7pm, Saturday: 8.30am-3.30pm

Phone: +1 800 275 8777

Internet: [www.usps.com](http://www.usps.com)

More Info: Another location can be found at 2100 E Speedway Blvd, Tucson

### Taxi



Taxi cab companies in Tucson include: AAA Airport Taxi Inc. +1 520 207 4790 Orange Cab of Tucson +1 520 884 7900 24hr Express +1 520 908

6990

Photo: ArrivalGuides

### Pharmacy



Several local pharmacies are located throughout Tucson as well as branches of chain pharmacies. CVS Pharmacy 865 E Grant

Rd, Tucson

+1 520 622 4853

Open daily 9am - 8pm

Reed's Compounding Pharmacy  
2729 E Speedway Blvd, Tucson

+1 520 318 4421

Monday - Friday 9am-6pm, Saturday 9am-1pm

Walgreens Pharmacy

3180 N Campbell Ave, Tucson, AZ 85719, USA

+1 520-326-5868

Open 24/7

Photo: Gemma Garner

### Telephone



Country code: +1 Area  
codes: 520

Photo: Jardson Almeida

### Electricity



110 Volt

Photo: Stirling Tschan

### Population

542,629 (2020)

### Currency

U.S. dollar = 100 cents

### Internet

[www.visittucson.org](http://www.visittucson.org)

### Newspapers

Arizona Daily Star — [tucson.com](http://tucson.com)

Tucson Weekly — [www.tucsonweekly.com](http://www.tucsonweekly.com)

### Emergency numbers

Dial 911 for emergencies

### Tourist information

Southern Arizona Heritage & Visitor Center

15 North Church Avenue, Tucson, AZ

+1 800 638 8350

Open daily 10am–5pm