



Snowy Mountains

in collaboration with Destination NSW for the Snowy Mountains

Photo: Destination NSW for the Snowy Mountains



Murray Vanderveer/Destination NSW for the Snowy Mountains

Australia's highest peaks are in the Snowy Mountains, where there's thrilling downhill skiing and snowboarding during the snow season. Lively towns and resorts in this alpine region in the Southwest NSW are also popular destinations in warmer months for hiking, horse riding, kayaking, mountain biking and fishing. When spring melts the snow into cascading waters and wildflowers bloom, streams shelter trout and attract many fly fishermen. Vineyards in this beautiful region produce excellent cool-climate wines, and fresh produce is on sale at farm gates.



Murray Vanderveer/Destination NSW for the Snowy Mountains



Destination NSW for the Snowy Mountains

Featured



Snowy Scheme Museum

The museum is a multi-dimensional insight into how the Snowy Mountains



Lambie Town Walk

Discover Cooma's rich history as you take this self-guided tour around Cooma...



Skiing

The alpine region of the NSW snowfields within Kosciuszko National Park offer...



Early Settlers Hut

The Early Settlers Hut is not only of unique local significance, but has a...



Gaden Trout Hatchery

Covering more than one hectare of picturesque parkland on the banks of the T...

Top 5



Mount Kosciuszko

Australia's highest peak is Mount Kosciuszko. Standing at 2,228 metres above...



Kosciuszko National Park

With almost 700,000 hectares of outstanding beauty, this spectacular nationa...



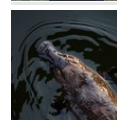
Snowy Mountains Snow Resorts

Whether you're a family of beginners, expert skiers and



Fishing

Snowy Mountains is the premier trout fishing region in New South Wales, and ...



Bombala Platypus Reserve

Visit the Bombala Platypus Reserve to see one of Australia's most endearing ...

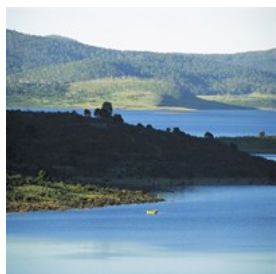
THE TOWNS OF SNOWY MOUNTAINS



Murray Vanderveer/Destination NSW for the Snowy Mountains

A rich cultural heritage that's helped shape the Australian identity, the Snowy Mountains are untameable high country dotted with charming townships. This is a very large area, even in Australian terms; Kosciuszko National Park itself covers almost 700,000 hectares, so allow time to explore the townships in this beautiful terrain.

Adaminaby



Discover an angler's haven on the banks of Lake Eucumbene. With the capacity to hold nine times the volume of Sydney Harbour, the

original river was dammed to form the lake which is the central storage for the Snowy Mountains Hydro-Electric Scheme. It also meant the township had to be relocated with more than 100 buildings being dismantled and re-erected. The area is a great winter base for the family friendly Mount Selwyn ski resort which is a 40-minute drive away. After the snow season, the town transforms into a summer resort with plenty of fishing, horse riding, bushwalking and water-skiing. The historic town of Kiandra and the Yarrangobilly Caves are nearby.

Photo: Destination NSW for the Snowy Mountains

Internet: visitadaminaby.com.au

Cooma



This gold-rush town on Monaro Plains is the largest town in the Snowy Mountains and the gateway to the ski fields. Cooma has been home to

graziers, prospectors and the many surveyors, engineers and hydrographers who sought to harness the power of the mighty rivers for the Snowy Mountains Hydro-Electric Scheme.

Discover its rich history along the Lambie Town Walk, and explore art galleries, craft stores, restaurants, and other attractions.

Photo: Don Fuchs/Destination NSW for the Snowy Mountains

Internet: visitcooma.com.au

Jindabyne



This town sits on the banks of its namesake lake against a stunning backdrop of soaring mountains. The area is a haven for adventurers

and nature lovers with walking, mountain biking, horse riding, four-wheel driving, whitewater rafting, canoeing, kayaking and other water sports. In summer, trout can be found in the lakes, rivers and streams. In the winter, the area is a great base to explore the ski fields at Thredbo and Perisher. Jindabyne was relocated in the late 1960s when the hydro-electric scheme called for the flooding of the original town, which now lies submerged under the lake.

Photo: Murray Vanderveer/Destination NSW for the Snowy Mountains

Internet: destinationjindabyne.com.au

Khancoban



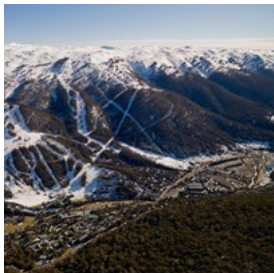
Tucked into the foothills of the western face of the Snowy Mountains, this picturesque town was originally built to house the workers and families

(over 100,000 migrants from some 30 countries) during the construction of the hydro-electric scheme. Beautifully landscaped with trees, parks and gardens, it overlooks a tranquil lake which is central to popular trout streams; the Khancoban Pondage is stocked with Atlantic salmon, brown trout and rainbow trout. Water activities including fishing, boating, whitewater rafting, canoeing, and water skiing are the adventure sports of choice here.

Photo: Jon Armstrong/Destination NSW for the Snowy Mountains

Internet: visitsnowyvalleys.au/locations/khancoban

Thredbo



This picturesque alpine village is a place for all seasons. A popular ski resort, the place is abuzz with skiers, snowboarders and snow

fans in the winter. As the white slopes turn green in the spring, hikers and bikers make the most of the magnificent natural bushland scenery. There's also golf, tennis, swimming and fly fishing. Ride the Kosciuszko Chairlift for spectacular views of this area.

Photo: Thredbo Alpine Village/Destination NSW for the Snowy Mountains

Internet: www.thredbo.com.au

Tumbarumba



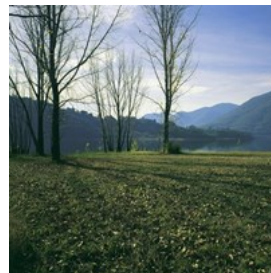
This charming township is filled with vineyards, sheep stations, streams and well-conserved heritage buildings.

Retrace the steps of the famous trek made by explorers Hume and Hovell on their way to Port Phillip in 1824 along a 12-kilometre walking track that takes in gold mining sites and waterfalls.

Photo: Don Fuchs/Destination NSW for the Snowy Mountains

Internet: www.visitsnowyvalleys.com.au/tumbarumba

Tumut



Aboriginal for "quiet resting place by the water", Tumut is a great year-round destination for nature lovers and adventurers. Choose from

trout fishing, water skiing, canoeing, caving, sailing, bushwalking, golf and tennis. The town's charm rests with the changing seasons and the majestic scenery. Along the 2-kilometre Tumut River Walk you can admire the birdlife of the Riverglade Wetlands, as well as the many historic buildings and remnants reflect a vibrant heritage of the pioneers who settled here.

Photo: Paul Sinclair/Destination NSW for the Snowy Mountains

Internet: visittumut.com.au

TOP ATTRACTIONS



Mike Gebicki/Destination NSW for the Snowy Mountains

The Snowy Mountains provide the ultimate outdoor escape — a true lure for nature lovers year-round.

Mount Kosciuszko



Australia's highest peak is Mount Kosciuszko. Standing at 2,228 metres above sea level, it presents a stunning perspective from its

majestic peak. A chairlift will take you to the highest access point to the mountain throughout the year. In the warmer months, a walking trail to the peak is open. From the chairlift, it's an easy 6-kilometre walk to the top for breathtaking views.

Photo: Sally Mayman/Turtle Pictures/Destination NSW for the Snowy Mountains

Internet: www.nationalparks.nsw.gov.au/things-to-do/walking-tracks/mount-kosciuszko-summit-walk

Kosciuszko National Park



With almost 700,000 hectares of outstanding beauty, this spectacular national park contains Australia's five highest alps, glacial lakes, limestone caves, grasslands and woodlands. The

park is recognised as a UNESCO Biosphere Reserve and contains plants not found anywhere else on the Earth. The winter skiing is some of the country's best, and you can explore this vast wonderland year-round.

Photo: Mike Gebicki/Destination NSW for the Snowy Mountains
Internet: www.nationalparks.nsw.gov.au/visit-a-park/parks/kosciuszko-national-park

Snowy Mountains Snow Resorts



Whether you're a family of beginners, expert skiers and snowboarders, or somewhere in the middle, there's a resort to suit your needs in the

Snowy Mountains. Family friendly Charlotte Pass and Selwyn Snowfields gently tempt beginner and intermediate skiers and boarders, while Perisher and Thredbo offer plenty of action both on the slopes and après-ski.

Photo: Barrakee Ski Lodge/Destination NSW for the Snowy Mountains

Internet: www.visitnsw.com/destinations/snowy-mountains/selecting-a-resort

Fishing



Snowy Mountains is the premier trout fishing region in New South Wales, and it takes over as the most popular sporting activity come the

spring melt. Brown, rainbow and brook trout, as well as Atlantic salmon, breed and prosper here. It's possible to go fishing in winter, but only on lakes and reservoirs, as most streams are closed from late June until the first weekend of October. You can also fish at Lake Eucumbene, Lake Jindabyne and Khancoban Pondage to enjoy the

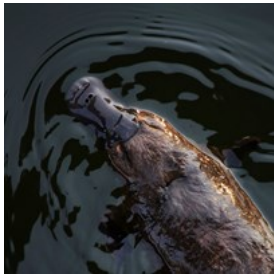
best fishing in the region. A licence is required, so obtain it online or at one of the many fishing retailers in the area.

Photo: Destination NSW for the Snowy Mountains

Internet:

www.visitnsw.com/destinations/snowy-mountains/fishing

Bombala Platypus Reserve



Visit the Bombala Platypus Reserve to see one of Australia's most endearing indigenous species. Early mornings or late afternoons are the best times to see platypuses. Spot them in the reserve along the Delegate River, platypus walk, and from the viewing platform. The award-winning Paddle with the Platypus program is offered during summer.

Photo: Michael Jerrard/unsplash

Address: Delegate Road, Bombala NSW

Internet: www.visitnsw.com/destinations/snowy-mountains/cooma-area/bombala/attractions/bombala-platypus-reserve

Yarrangobilly Caves



These magnificent limestone caves feature delicate shawls, grand columns, underground pools and amazing chambers. You can explore five caves created from a belt of limestone laid down about 440 million years ago. The caves are set inside the deep gorges and rugged bluffs of the Yarrangobilly River Valley at the north of Kosciuszko National Park. Bring bathers to enjoy the natural thermal pool which is a constant 27°C.

Photo: Murray Vanderveer/NSW Government/Destination NSW for the Snowy Mountains

Address: Yarrangobilly Caves, Kosciuszko NSW

Internet: visitcooma.com.au/attractions/yarrangobilly-caves-kosciuszko-national-park

Kosciuszko Chairlift



The Kosciuszko Chairlift is a great way to enjoy the spectacular views of Thredbo. At nearly 2 kilometres long, the ride takes 15 minutes one way and offers spectacular valley views as you are lifted 560 vertical metres to the closest access point to Mount Kosciuszko. The scenic chairlift is open 365 days a year.

Photo: Destination NSW for the Snowy Mountains

Address: Thredbo Resort Centre, Friday Drive, Thredbo Village NSW

Phone: +61 1300 020 589

Internet: www.thredbo.com.au/weather/lifts-trails

Snowy Hydro Discovery Centre



The Snowy Hydro Discovery Centre showcases the story of the Snowy Mountains Hydro-Electric Scheme, one of Australia's biggest and greatest feats in engineering and construction. With seven power stations, two of which are underground, 16 major dams, and over 140 kilometres of trans-mountain tunnels, it is a symbol of Australian endeavour at its best. The various models, exhibits and interactive displays in the centre explain the sheer scope of this iconic development.

Photo: Destination NSW for the Snowy Mountains

Address: Monaro Highway, Cooma NSW

Opening hours: Mon-Fri 8am-4:30pm, Sat & Sun 9am-2pm

Phone: +61 2 6453 2004

Internet:

www.snowyhydro.com.au/visit/snowy-hydro-discovery-centre

DO & SEE



Destination NSW for the Snowy Mountains

Home to beautiful alpine wilderness, the Snowy Mountains present a stunning vista of rivers, mountains, valleys and glacial lakes. Enjoy great skiing and snowboarding in the cooler months, and bushwalking, mountain biking, horse riding and fishing in the warmer months.

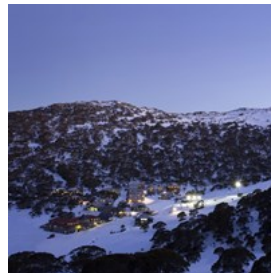
Australian Alps Walking Track



The Australian Alps Walking Track stretches across 655 kilometres, following ridges and plains through some of the highest parts of Australia; more than ten peaks exceed 2,100 metres! The Australian Alps are the largest alpine area in the country, extending from Canberra and the Brindabella range, through the Snowy Mountains, and along the Great Dividing Range. You can walk the track in 10 weeks, but many choose to explore shorter sections such as the Jagungal Wilderness Area. Experience and maps required.

Photo: Mike Gebicki/Destination NSW for the Snowy Mountains
Opening hours: Accessible at most times but can be closed during winter.
Internet: theaustralianalpsnationalparks.org/experience/aawt

Charlotte Pass Snow Resort



At 1,760 metres above sea level, Charlotte Pass is Australia's highest village. During the winter, the resort town is only accessible via over-snow transport. The ski-in, ski-out terrain allows only a limited number of guests in the village at any time, meaning no crowds and no long queues during the ski season. Gentle slopes are available for beginners, with intermediate terrain, challenging advanced runs, and cross-country trails also on offer. Charlotte Pass lookout and boardwalk are accessible during the summer months by car.

Photo: Destination NSW for the Snowy Mountains
Address: Kosciuszko Road, Charlotte Pass NSW
Phone: +61 2 6457 1555
Internet: charlottepass.com.au

Cooma Golf Club



This 18-hole golf course has bentgrass greens and top class fairways with the added pleasure of abundant native wildlife to see while walking between holes. Take in magnificent views looking across the Monaro Plains and out to the mountains.

Photo: Teddy Tent 6365/shutterstock
Address: Golf Course Road, Cooma NSW
Phone: +61 2 6452 2243
Internet: www.coomagolfclub.com.au/cms

Gaden Trout Hatchery



Covering more than one hectare of picturesque parkland on the banks of the Thredbo River, this is one of the country's main centres for rearing and breeding coldwater sport fish. Four species are farmed here: brook, brown and rainbow trout, and Atlantic salmon. Learn how the hatchery works and feed the big fish as they surface in the ponds. Fishing is not permitted at the hatchery.

Photo: Gaden Trout Hatchery/Destination NSW for the Snowy Mountains

Address: 224 Gaden Road, Jindabyne NSW

Phone: +61 2 6451 3400

Internet: www.dpi.nsw.gov.au/content/fisheries/info/gaden

Khancoban Pondage



Khancoban Pondage is a 3-kilometre lake that forms part of the Snowy Mountains Hydro-Electric Scheme. Stunning scenery surrounds the

lake: Australia's highest snow-covered mountains in winter, blooming wildflowers in spring, and falling leaves of brilliant hues in autumn. The lake is popular with anglers as it holds Atlantic salmon, brown and rainbow trout, and some redfin.

Photo: Destination NSW for the Snowy Mountains

Address: Khancoban Pondage, Khancoban NSW

Internet: www.visitnsw.com/destinations/snowy-mountains/tumbarumba-area/khancoban/attractions/khancoban-pondage

Kosciuszko National Park



The magnificent scenery of alps, glacial lakes, limestone caves, grasslands and woodlands has been listed as a UNESCO

World Biosphere Reserve. The national park is home to Mount Kosciuszko, the highest point in Australia and named after a Polish patriot and democratic leader. Enjoy great skiing in winter; and in spring and summer a blanket of wildflowers blazes across the mountains, crisscrossed by walking tracks which reveal spectacular views over the rooftop of the country.

Photo: Jeffrey Drewitz/Destination NSW for the Snowy Mountains

Phone: +61 2 6450 5600

Internet: www.nationalparks.nsw.gov.au/visit-a-park/parks/kosciuszko-national-park

Lake Eucumbene



Sitting at an elevation of 1,200 metres and expanding across 145 square kilometres, Eucumbene is the largest lake in the Snowy

Mountains, holding nine times the volume of Sydney Harbour. The lake is one of the best fisheries in the Australian highlands and holds rainbow trout, brown trout and Atlantic salmon. In the warmer months, the lake comes alive with a wide variety of sports including water skiing, windsurfing, swimming, and boating (life jacket required).

Photo: Frances Redden/Destination NSW for the Snowy Mountains

Internet: www.visitnsw.com/destinations/snowy-mountains/tumbarumba-area/adaminaby/attractions/lake-eucumbene

Lambie Town Walk



Discover Cooma's rich history as you take this self-guided tour around Cooma's historic landmarks. This 5-kilometre walk includes three heritage areas recognised by the National Trust including the Court House precinct built in the 1860s; Lambie Street, the first commercial centre of the township; and Church Hill with its examples of 19th and 20th century religious and educational buildings. Walk, drive or bike the route, with maps available from the Cooma Visitor Information Centre.

Photo: Judy Goggin/Destination NSW for the Snowy Mountains
Address: Cooma Visitor Information Centre, 119 Sharp Street, Cooma NSW
Internet: www.visitnsw.com/destinations/snowy-mountains/cooma-area/cooma/attractions/lambie-town-walk

Mosaic Time Walk



The Cooma-Monaro Time Walk was a community project for Australia's Bicentennial Year of 1988. Colour and design students of Cooma TAFE College created a series of forty tiles, each one square metre, depicting historical community icons and events. These include Monaro Aborigines, the discovery of Monaro by European settlers, Mount Kosciuszko, bushrangers, and aspects of daily mountain life such as sheep, cattle, and mountain horses.

Photo: Russell Fox/Destination NSW for the Snowy Mountains
Address: Centennial Park, Cooma NSW
Internet: www.visitnsw.com/destinations/snowy-mountains/cooma-area/cooma/attractions/mosaic-time-walk

Pioneer Women's Hut Museum



The Pioneer Women's Hut Museum is one of the most unusual small museums in Australia. Cleverly themed, it reflects the ingenuity of women in finding solutions to the challenges of looking after a family in early rural Australia. The accessibility and provenance of the diverse collection adds to its reputation.

Photo: Tumbarumba Shire Council/Destination NSW for the Snowy Mountains
Address: The Glenroy Heritage Reserve, 449 Tumbarumba Road, Tumbarumba NSW
Phone: +61 2 6948 3333
Internet: www.visitsnowyvalleys.com.au/listing/pioneer-women-hut-museum

Selwyn Snow Resort



To the north of Kosciuszko National Park, Selwyn Snow Resort is a great place for learners and families. The slopes progress across the mountain from beginner to advanced trails. This is a gentle way to experience a snow holiday and have fun skiing, tobogganing, snow-tubing or building a snowman.

Photo: Australian Capital Tourism/Destination NSW for the Snowy Mountains
Address: Selwyn Snow Resort, Kings Cross Road, Kiandra NSW
Phone: +61 2 6454 9488
Internet: selwynsnow.com.au

Skiing



The alpine region of the NSW snowfields within Kosciuszko National Park offers terrain that challenges experts along with gentler slopes for

beginners. Explore the various terrain parks of the Snowy Mountains ski resorts. The fun continues in the evening with night skiing. Perisher is the largest ski resort in the Southern Hemisphere, Thredbo Australia's longest runs and plenty of restaurants, and Charlotte Pass is a boutique resort that's perfect for families.

Photo: Shannon Pawsey/Destination NSW for the Snowy Mountains

Internet: www.visitnsw.com/things-to-do/adventure-and-sport/skiing-and-snowboarding

Snowy Valleys Way



If you get a kick out of road trips, enjoy driving this superb scenic route through the foothills of the mountains, passing through Gundagai, Tumut

and Tumbarumba. Explore the historic country towns on the 300-kilometre drive and discover outdoor adventure, fresh seasonal produce, and cool-climate wines along the way.

Photo: Paul Foley/Destination NSW for the Snowy Mountains
Internet:

www.snowyvalleysway.com.au/snowy-valleys-way-map

Snowy Scheme Museum



The museum is a multi-dimensional insight into how the Snowy Mountains Hydro-Electric Scheme influenced the nation. It highlights the

achievements of the engineers, workers, and machinery and the role they played in the development of modern Australia.

Photo: Cooma Visitors Centre/Destination NSW for the Snowy Mountains

Address: Snowy Mountains Highway, Adaminaby NSW

Phone: +61 2 6454 1643

Internet: www.snowyschememuseum.com.au

Early Settlers Hut



The Early Settlers Hut is not only of unique local significance, but has associations going back to the earliest establishment of

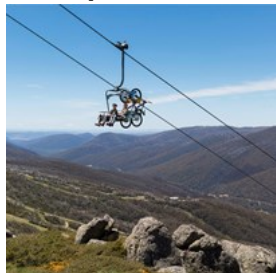
European settlement in the colony. The building is of the type erected by squatters in the mid 1840s when they were first given some form of permanent occupancy, and it undoubtedly dates from this period. The hut is situated 1 kilometre south-west of the township of Delegate.

Photo: Frances Redden/Cooma Visitors Centre/Destination NSW for the Snowy Mountains

Address: Delegate Road, Delegate NSW

Internet: www.visitnsw.com/destinations/snowy-mountains/cooma-area/bombala/attractions/early-settlers-hut

Gravity Mountain Biking



The long ski runs of winter transform into a downhill mountain-biking haven in the warmer months. Access is by the Kosciuszko Chairlift every

day from November to May. Offering a completely different experience to cross-country riding, it's the longest lift-accessed downhill mountain-biking run in Australia.

Photo: Tourism Snowy Mountains/Destination NSW for the Snowy Mountains

Address: Friday Drive, Thredbo NSW

Phone: +61 2 6459 4100

Internet: www.thredbo.com.au/summer

RESTAURANTS, CAFÉS & BARS



Destination NSW for the Snowy Mountains

Tackling the mountains at any time of the year can work up an appetite. Whether you're seeking a casual bite or a gourmet experience, the Snowy Mountains' villages and towns offer tempting delights to suit a wide range of budgets and tastes.

Wildbrumby Distillery Door & Cafe



The Wildbrumby Distillery & Cafe is a unique, boutique schnapps distillery located on the Alpine Way in the picturesque

Thredbo Valley, halfway between Jindabyne and Thredbo, also offering Austrian-inspired meals.

See the beautiful brass distilling equipment from Germany and try out some of the schnapps made on site. The cafe is the ideal place to stop for a tasting, coffee, exquisite continental cakes or lunch. There's a selection of wines and Paulaner German Lager beer on tap, too.

Photo: Wildbrumby Distillery & Cafe/Destination NSW for the Snowy Mountains

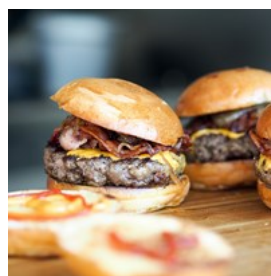
Address: Alpine Way & Wollondibby Road, Crackenback NSW

Phone: +61 2 6457 1447

Internet: wildbrumby.com/visit-us/distillery-door-cafe

More Info: Bookings recommended, especially at weekends and during holiday periods.

Friday Flat Bar & Bistro



Friday Flat Bar & Bistro, located next to Gunbarrel Chairlift, offers quick and easy meals perfect for winter weather. Enjoy coffee, bacon rolls,

burgers, curries, and craft beer. Ideal for a break or post-activity refuel.

Photo: Niklas Rhöse/unsplash

Address: 2C Friday Drive, Thredbo NSW

Opening hours: Open in winter

Internet:

www.thredbo.com.au/restaurants-bars/fridays-bar-restaurant

Parc Cafe



Whoever invented the all-day breakfast deserves a medal, and whoever serves an all-day breakfast deserves two. Parc Cafe, at Snowy

Region Visitor Centre in Jindabyne, knows what its customers want. As well as a breakfast menu, this licensed cafe offers Devonshire tea, coffee, packed lunches, freshly squeezed juice, gluten free and dairy free options, vegetarian meals, bush tucker food.

Photo: Elinor Sheargold/Destination NSW for the Snowy Mountains

Address: 49 Kosciuszko Road, Jindabyne NSW

Phone: +61 2 6456 2517

Internet: www.parcjindy.com.au

White Spider



For a great place to unwind after a day of riding or skiing, settle into the bar and listen to live music in the early evening. Watch the

spectacular Perisher Fireworks every Thursday night and indulge in a few bar snacks with a glass of wine while watching the Tuesday night skiing.

Photo: White Spider/Destination NSW for the Snowy Mountains

Address: Perisher Ski Resort, 1 Wheatley Road, Perisher Valley NSW

Phone: +61 2 6457 5209

Internet: eiger.com.au/white-spider-restaurant-perisher

Santé



Santé is an authentic Brazilian barbecue house in the rodizio all-you-can-eat style. Pay a fixed price and the waiters bring a variety of

food to the table until you say enough. Cuts of meat arrive every few minutes and most are served right off the skewer and sliced at the table.

Photo: Destination NSW for the Snowy Mountains

Address: Thredbo Alpine Hotel, Squatters Run, Thredbo Village NSW

Phone: +61 2 6457 6083

Internet: www.santethredbo.com

The Dining Room



The huge glass facade of The Dining Room looks out over Perisher Front Valley and is a great location to relax and enjoy a delicious meal.

The three-course set menu changes daily with three options per course. The chefs produce innovative cuisine using fresh produce from the Snowy Mountains, Southern NSW and the NSW South Coast.

Photo: Destination NSW for the Snowy Mountains

Address: Man From Snowy River Hotel, Kosciuszko Road, Perisher Valley NSW

Phone: +61 2 6457 5234

Internet: www.themanfromsnowyriver.com.au/dining.html

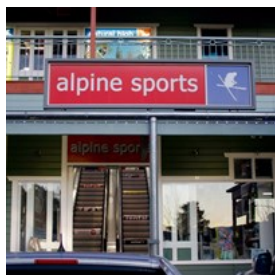
SHOPPING



Destination NSW for the Snowy Mountains

From ski gear and chic boutiques to cool-climate wines and fishing equipment, shopping in the Snowy Mountains is easy. You'll find what you need to enjoy the glorious mountains, valleys, rivers and lakes — stunning whatever the season.

Alpine Sports



Alpine Sports is open year-round and offers a good selection of ski and snowboard equipment for hire or purchase. Browse a wide range of clothing, accessories and headwear in store or online.

Photo: Destination NSW for the Snowy Mountains

Address: Nuggets Crossing Shopping Centre, Kosciuszko Road, Jindabyne NSW

Phone: +61 2 6456 2900

Internet: www.alpinesports.com.au

Cooma Rotary Markets



Held on the third Sunday of each month, these markets offer a variety of crafts, pottery, clothing, prints, bric-a-brac and woodwork. Local

lavender products, plants, and nursery and garden implements also feature alongside local

produce. A jumping castle in the park keeps children entertained.

Photo: Katrin Hackney/Cooma Visitors Centre/Destination NSW for the Snowy Mountains

Address: Centennial Park, Sharp Street, Cooma NSW

Opening hours: Every 3rd Sunday of the month 9am-1:30pm

Phone: +61 437 601 350

Internet: www.coomamarkets.com.au

JK Gallery & Mountain Shop



Find exclusive pieces for your home décor including fine local artwork, original sculptures, hand-crafted wooden furniture, antiques, homewares, and exotic furs and rugs from around the world. The store also stocks clothing and accessories including Scottish cashmere sweaters, scarves, gloves, and wraps.

Photo: Tom The Photographer/unsplash

Address: 8 Squatters Run, Thredbo Village NSW

Phone: +61 2 6457 6990

Internet: www.jkgallerymountainshop.com

Jolly Berries



The cool climate of the Snowy Mountains produces high quality and intensely flavoured blueberries. Pick your own at this family owned

farm or buy punnets in season between December and March. Other blueberry products available for sale include jams, sauces, toppings, port, wine, and sparkling wine.

Photo: Andrew Welch/unsplash

Address: 247 Tumbarumba Road, Tumbarumba NSW

Phone: +61 427 760 446

Internet: www.jollyberries.com.au

Lavender House



The town of Bombala and the surrounding Monaro region are ideally suited to the growing of high quality lavender. Discover locally produced lavender products while you learn about the history of the area. Essential lavender oil distillations and talks can be arranged with prior notice.

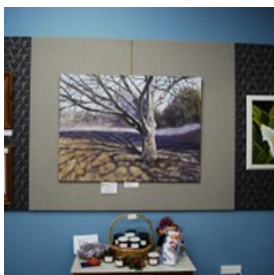
Photo: Jessica Ruscello/unsplash

Address: Railway Park, Monaro Highway, Bombala NSW

Phone: +61 2 6458 4622

Internet: www.visitnsw.com/destinations/snowy-mountains/cooma-area/bombala/attractions/lavender-house-railway-park

Monaro Art Group Gallery



The Gallery is operated by the Monaro Art Group and displays paintings, photographs, crafts and sculptures by talented local artists and craftsmen. All items displayed are available for purchase.

Photo: Monaro Art Group/Destination NSW for the Snowy Mountains

Address: 112 Sharp Street, Cooma NSW

Phone: +61 428 691 512

Internet:

visitcooma.com.au/attractions/monaro-art-group-little-gallery

Ribbonwood Antiques



Located on the farm of Ribbonwood Cottages, this antique store has a selection of restored antique furniture and collectables all sourced from the local area.

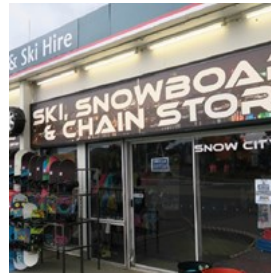
Photo: Ribbonwood Antiques/Destination NSW for the Snowy Mountains

Address: 116 Lacmalac Road, Tumut NSW

Phone: +61 2 6947 2527

Internet: www.ribbonwoodcottages.com.au

Snow City



Snow City's retail range includes a wide variety of equipment including skis, boards, goggles, helmets, gloves, skate gear and more. Their Demo Service Van provides an on-slope mobile service for those wanting to swap or adjust their demo equipment.

Photo: Destination NSW for the Snowy Mountains

Address: 4 Kosciuszko Road (next to Caltex), Jindabyne NSW

Phone: +61 2 6456 1177

Internet: www.snowcity.com.au

Snowy Mountain Cookies



Baked with quality ingredients including couverture chocolate, free range eggs and real butter, these cookies are made without artificial colours, flavours or additives and no preservatives. Watch through the glass kitchen door to see how it all happens in the bakehouse.

Photo: Destination NSW for the Snowy Mountains

Address: 7a Lee Avenue, Leesville Estate, Jindabyne NSW

Phone: +61 402 449 682

Internet: snowycookies.com.au

The Apple Thief Cider House



The Apple Thief Cider House in Batlow crafts premium ciders from 100% freshly pressed fruit with no artificial additives. Enjoy their natural ciders along with delicious food and coffee. A must-visit for cider enthusiasts.

Photo: Joanna Stołowicz/unsplash

Address: 4066 Batlow Road, Batlow NSW

Phone: +61 427 491 224

Internet: theapplethief.com.au

ACCOMMODATION



Destination NSW for the Snowy Mountains

Stay on-snow in winter, or rest and relax with a bush retreat in the warmer months. A vast selection of lodges, hotels, B&Bs and farm stays are dotted around the beautiful terrain of spectacular mountains, valleys, lakes and rivers.

TOURIST INFORMATION



Destination NSW for the Snowy Mountains

The Snowy Mountains are easy to access by road, air and coach. With such a vast area covering so many spectacular natural attractions, take your time and explore the beauty of the splendid region and enjoy the many outdoor adventures.

Train & Coach



Many bus companies operate from Canberra or Sydney to various towns and villages in the Snowy Mountains. Here are some options: Cooma

Coaches (www.coomacoaches.com.au) provide regular bus service linking the villages and towns of the Snowy Mountains.

Greyhound (www.greyhound.com.au) provides daily services from Sydney Central Station to Jindabyne and Thredbo via Bullocks Flat, and from Canberra Airport to the ski resorts.

Murrays Coaches (www.murrays.com.au) operate services from Canberra and Sydney to Thredbo.

NSW TrainLink (www.nswtrainlink.info) runs trains and buses between Sydney and Cooma, Jindabyne and Bombala, via Canberra, and

Tumut and Tumbarumba.

Seasonal buses take passengers from Jindabyne to Perisher and Thredbo resorts from early June to early October.

Photo: MountainAsh/unsplash

Internet: www.visitnsw.com/destinations/snowy-mountains/getting-to-snowy-mountains

By Car



Most visitors travel to the region by car, as this is the most flexible and rewarding way of exploring the mountains with its diverse and spectacular scenery.

The Snowy Mountains region is well-served by a network of good roads: the Alpine Way runs from Jindabyne to Khancoban; the Snowy Mountains Highway between Tumut and Cooma; the Monaro Highway runs south from Canberra; and the Elliot Way runs from Tumbarumba to Cabramurra. All these routes pass through beautiful landscapes.

From Sydney it's an easy six-hour drive down the Hume Expressway. Before reaching Yass, turn left for Canberra/Cooma and follow the signs to Cooma. This is a 460-kilometre drive. Upon leaving Cooma, there is an option of taking the Kosciuszko Road to Jindabyne, Thredbo and Perisher Valley, or taking the Snowy Mountains Highway to Adaminaby and on into the northern end of the Kosciuszko National Park.

There is a fee for vehicles using Kosciuszko National Park, with stations on three of the main roads entering the park. There are different prices for summer day and winter day passes per

vehicle.

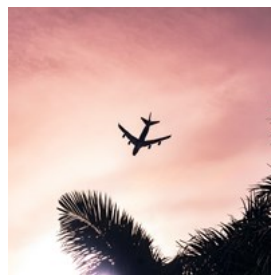
Some minor roads may be unsuitable for caravans and hire cars. Always check road conditions before departure by calling the traffic hotline on 132 701.

It's compulsory to carry properly fitting snow chains if you are driving a two-wheel-drive vehicle from the June long weekend until the October long weekend on the following roads: Kosciuszko Road from the park boundary at Thredbo River; the Alpine Way between Thredbo and Tom Groggin; and the Island Bend/Guthega Road for its full length.

Photo: Sabrewolf/shutterstock

Internet: www.visitnsw.com/destinations/snowy-mountains/getting-to-snowy-mountains

Airports



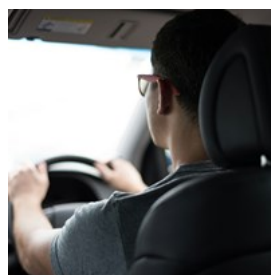
Fly into Canberra Airport (CBR) from most capital cities, or direct to Cooma-Snowy Mountains Airport (OOM), with seasonal flights operated

by QantasLink. Private shuttle services are available from the airports, as well as taxis and car rentals.

Photo: Eduardo Velazco Guart/unsplash

Internet: snowymountains.com.au/getting-here

Taxis



Call 131 008 to book a taxi anywhere in Australia.

Photo: Art Markiv/unsplash
Phone: 131 008
Internet: www.131008.com

Medical



In the Snowy Mountains region, and Australia more broadly, there are several major pharmacy chains where you can pick up over-the-counter

medications, prescription drugs, personal care items, and more. The major pharmacy chains are Blooms The Chemist, Chemist Warehouse, TerryWhite Chemmart, Priceline Pharmacy and Amcal. It's always worth checking the opening hours as these can vary, especially on weekends and public holidays.

There are also many independent pharmacies in the region.

Adelong Pharmacy
109 Tumut Street, Adelong NSW
+61 2 6946 2555

Monaro Pharmacy
82 Vale Street, Cooma NSW
+61 2 6452 1599
www.capitalchemist.com.au/monaro

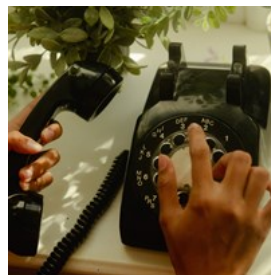
Russell St Pharmacy
20a Russell Street, Tumut NSW
+61 2 6947 9886

Jindabyne Pharmacy
Nuggets Crossing Shopping Centre, Jindabyne NSW
+61 2 6456 2977
www.jindabynepharmacy.com.au

Capital Chemist Thredbo
Squatters Run, Mowamba Place, Thredbo NSW
+61 2 6457 6140

Photo: Diana Polekhina/unsplash

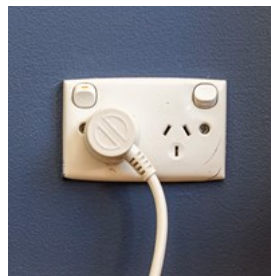
Telephone



Country code: +61 Area Code: (0)2

Photo: Wesley Hilario/unsplash

Electricity



Australia operates on a 230/240V supply voltage and 50Hz frequency. The country uses Type I power plugs, which feature two flat pins

forming a 'V' shape, along with a grounding pin. This standard is also commonly used in New Zealand, Argentina, China, and several Pacific island nations. Remember to pack a universal adapter if your devices use a different plug type to ensure hassle-free charging.

Photo: Mitchell Luo/unsplash

Population

The population is approximately 22,000. Around three million people visit Kosciuszko National Park each year.

Currency

Australian Dollar (AUD) \$1 = 100 cents

Opening hours

General shopping hours are from Monday to Friday 9am–5:30pm, with late night shopping on Thursday until 9pm. Shops tend to stay open Saturday 9am–4pm, and Sunday 10am–4pm.

Internet

www.visitnsw.com/destinations/snowy-mountains
snowymountains.com.au

Emergency numbers

Police, Fire & Ambulance 000

Tourist information

Snowy Region Visitor Centre

49 Kosciuszko Road, Jindabyne NSW

+61 2 6450 5600

Open daily 8:30am–5pm

Tumut Region Visitor Information Centre

5 Adelong Road, Tumut NSW

+61 2 6947 7025

Open daily 9am–5pm

visitsnowyvalleys.au

Tumbarumba Visitor Information Centre & Museum

10 Bridge Street, Tumbarumba NSW

+61 2 6948 3333

Open Mon–Fri 9am–4pm, Sat & Sun 9:30am–1:30pm

Cooma Visitors Centre

119 Sharp Street, Cooma NSW

+61 1800 636 525

Open daily 9am–3pm

visitcooma.com.au

Bombala Visitors Centre

41 Monaro Highway, Bombala NSW

+61 2 6458 4622

Open Mon–Fri 10am–4pm, Sat & Sun closed

Perisher Valley Visitor Information Centre

Perisher Ski Resort, 9914 Kosciuszko Road, Perisher Valley
NSW

+61 2 6457 4444

Open daily 8:30am–4:30pm

Khancoban Visitor Centre

2 Scammel Street, Khancoban NSW

+61 2 6070 8400

Open Mon–Fri 9am–1pm / 2pm–4pm; Sat & Sun 9am–4pm