



Santa Fe, New Mexico

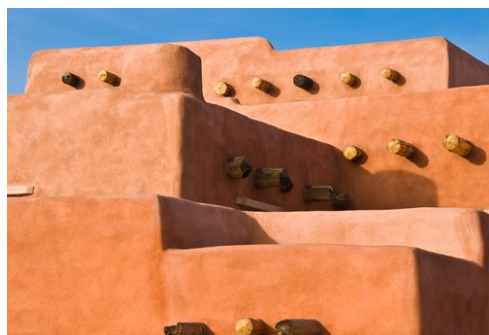
Photo: blewulis/Shutterstock.com



Richard Susanto/Shutterstock.com



Henryk Sadura/Shutterstock.com



Sebastien Burel/Shutterstock.com

Santa Fe is poised with the grace and promise of an existence that spans over 400 years. As the nation's oldest capital city, Santa Fe bears an identity that extends past Anglo-America and into Spanish and Pueblo heritages. History aficionados and culture enthusiasts are drawn to "The City Different" each year. Explore numerous museums and partake in community-wide celebrations. Santa Fe is a paradise for the bold-hearted.

Featured



Santa Fe Trail

The Santa Fe Trail was a transportation route through central North America...



Santa Fe Symphony & Chorus

The Santa Fe Symphony Orchestra & Chorus is a professional, full-sized orche...



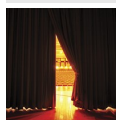
Rodeo de Santa Fe

The Rodeo de Santa Fe began in 1949 when a group of individuals sought to or...



St. Francis Cathedral

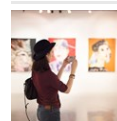
St. Francis Cathedral is one of Santa Fe's historical gems. Serving as the r...



Santa Fe Opera House

Even if you aren't a fan yet, you'll fall in love with opera after attending...

Top 5



Georgia O'Keeffe Museum

Artist Georgia O'Keeffe moved to Santa Fe in 1949 and established it as her ...



Meow Wulf's House of Etern...

Opened in 2016, the House of Eternal Return is a self-titled combination of ...



Taos Municipality & Rio Gr...

If you have the opportunity to rent a car, the scenic 1 1/2 hour drive from ...



Loretto Chapel

Used a backdrop for weddings, the Loretto Chapel is one of Santa Fe's oldest...



Palace of the Governors

When Santa Fe was still under Spanish rule in the 17th century, the Palace o...

THE CITY



Bill Florence/Shutterstock.com

Santa Fe's history is firmly planted in the struggle of centuries-old cultural clashes. Such molten chaos has given rise to the solidified, beautiful epicenter of today. The city is like obsidian: smooth and solid, glistening delicately with each sunrise and sunset as countless people make their way across its palette of reds, yellows and terracotta.

Prior to the eruption of territorial clashes, Santa Fe and its accompanying areas were home to the Pueblo Indians, who occupied the region from 1050 to 1150 AD, with the earliest documented settlement at 900 AD. The village in present-day Santa Fe was called "Ogapoge," and it thrived around the water from the Santa Fe River. In 1598, the Spanish began their efforts of colonization under the helm of Don Juan de Oñate: he christened the area "Santa Fé de Nuevo México" as a province of New Spain. Santa Fe would remain Spain's provincial seat until the beginnings of the Mexican War of Independence in 1810.

American influence suffused into Santa Fe when the Republic of Texas would claim the city as a part of the Texan territory when it seceded from Mexico in 1836. The United States declared war on Mexico in 1846 following a failed attempt at gaining control over the Santa Fe Trail, and

Brigadier General Stephen W. Kearny led a faction of his Army of the West into Santa Fe to secure it and the New Mexico Territory for the United States. The struggle lasted only two years, with the United States gaining New Mexico in the Treaty of Guadalupe Hidalgo.

Catholicism strongly shaped Santa Fe and the Southwest throughout the 1850s with the arrival of Jean Baptiste Lamy, bishop of New Mexico, Arizona, Utah, and Colorado. He sanctioned the construction of Saint Francis Cathedral in Santa Fe, which is still standing today. Beyond its religious affiliations, the city became known for its wealth of archeological and artistic resources, most especially with the School of American Research founded in 1907. Such significance led to New Mexico's 1912 induction as America's 47th state, and Santa Fe became its capital.

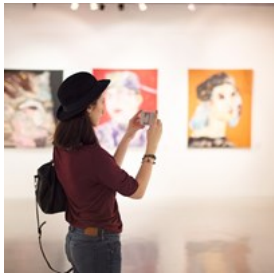
DO & SEE



Aneese/Shutterstock.com

Whether you're traveling by air, train, car or water, you will discover the beautiful architecture, museums, theaters, and festivals that Santa Fe has to offer. Visit the Loretto Chapel and see the mystically built "miraculous staircase," crafted, according to legend, by an angel. Stroll through art galleries, sculpture galleries, and hand-crafted silver and turquoise jewelry. Everywhere you go, you are sure to find a visual treat in stunning Santa Fe.

Georgia O'Keeffe Museum



Artist Georgia O'Keeffe moved to Santa Fe in 1949 and established it as her new home and artistic haven as it, according to O'keeffe, expressed "the wideness and wonder of the world as I live in it." Though she had been popular and recognized in New York art circles, she found her niche in the rugged New Mexican terrain where she immortalized flowers, shrubs, rocks, shells, and other natural objects through large-scale abstractions. The Georgia O'Keeffe Museum has over 3,000 works of art, including 1,149 paintings, drawings, and sculptures done by O'keeffe from 1901 to 1984. The museum is also dedicated to O'keeffe's contemporaries and the American contemporary and modernist art movements; artists such as Arthur Dove, Sherrie Levine, Jackson Pollock, and Andy Warhol have had their work displayed at the museum.

Photo: Rawpixel.com/Shutterstock.com
Address: 217 Johnson Street, Santa Fe
Opening hours: Sat-Thu 10am-5pm, Fri 10am-7pm
Phone: +1 505 946 1000
Internet: www.okeeffemuseum.org
Email: info@okeeffemuseum.org

Meow Wulf's House of Eternal Return

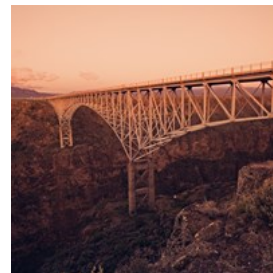


Opened in 2016, the House of Eternal Return is a self-titled combination of "children's museum, art gallery, jungle gym and fantasy novel". It has been formed by the Meow Wolf collective and over 100 local artists. The installation represents a Victorian house, in which each visitor can choose their individual path. Immerse yourself into the story and

experience colors and your own imaginative space.

Photo: Krzysztof Matt/Shutterstock.com
Address: 1352 Rufina Cir, Santa Fe
Opening hours: Sun-Thu 10am-8pm, Fri-Sat 10am-10pm
Phone: +1 505 395 6369
Internet: www.meowwolf.com/visit/santa-fe

Taos Municipality & Rio Grande Gorge Bridge



If you have the opportunity to rent a car, the scenic 1 1/2 hour drive from Santa Fe to the Municipality of Taos, north of Santa Fe, should be on your list. Surrounded by incredible landscapes, the town offers endless recreational activities.

Photo: Henryk Sadura/Shutterstock.com
Address: Taos, New Mexico
Internet: taos.org/

Loretto Chapel



Used as a backdrop for weddings, the Loretto Chapel is one of Santa Fe's oldest and most dear attractions. Formerly a Roman Catholic church, it now serves as a museum and wedding venue. Perhaps beyond its grand beauty and elegance, Loretto Chapel's continued allure lies in its mysterious spiral staircase. Both the identity of its builder and the stunning physics of its construction - there were no supports holding it as it spirals into the choir loft - remain a mystery. Legend says that St. Joseph himself made it, as the man who did build the staircase disappeared before the nuns were able to pay him, and the wood used was not native to the area. It is a stunning salute to the science of physics and the

hearts of believers.

Photo: Jim Harris/Shutterstock.com

Address: 207 Old Santa Fe Trail, Santa Fe

Opening hours: Mon-Sat 9am-5pm, Sun 10.30am-5pm

Phone: +1 505 982 0092

Internet: www.lorettochapel.com

Email: information@lorettochapel.com

Palace of the Governors



When Santa Fe was still under Spanish rule in the 17th century, the Palace of the Governors was erected as a seat of government. It now pays homage to the American Southwest, providing educational opportunities for visitors seeking to delve into the region's rich past. The adobe is the state's history museum and was designated a Registered National Historic Landmark in 1960 and an American Treasure in 1999.

Photo: Zach Frank/Shutterstock.com

Address: 105 West Palace Avenue, Santa Fe

Opening hours: Mon-Sun 10am-5pm

Phone: +1 505 476 5100

Internet: www.palaceofthegovernors.org

El Rancho de las Golondrinas



Over 200 acres incorporates El Rancho de las Golondrinas, Santa Fe's living history museum. El Rancho represents and exhibits

New Mexico's history with emphasis on the Spanish Colonial era. The museum is dedicated to 18th and 19th century New Mexico, with original colonial buildings and reconstructed Northern New Mexican historic buildings. Enjoy lively festivals with music and dance.

Photo: Bonita R Cheshier/Shutterstock.com

Address: 334 Los Pinos Road, Santa Fe

Opening hours: June-October Wed-Sun 10am-4pm

Phone: +1 505 471 2261

Internet: www.golondrinas.org

Email: mail@golondrinas.org

Museum of International Folk Art



The Museum of International Folk Art has a history of preserving the arts spanning six decades. In the time since their opening in 1953, the

museum has gained national and international acclaim as an accredited art gallery. With a collection of more than 135,000 artifacts, they are home to the world's largest collection of folk art. Explore the exhibitions covering four wings: Bartlett, Girard, Hispanic Heritage, and Neutrogena.

Photo: LizCoughlan/Shutterstock.com

Address: 706 Camino Lejo, Santa Fe

Opening hours: Tue-Sun 10am-5pm

Phone: +1 505 476 1200

Internet: www.internationalfolkart.org

Email: info.moifa@state.nm.us

Native American Pueblos



Thousands are drawn each year to Santa Fe for its wealth of natural and historical sight-seeing opportunities. Among these are the Eight

Northern Indian Pueblos located north of the city. With a history extending millennia, the pueblos were inhabited by Native Americans far before the arrival of the Spanish in the 1500s. Today, their cultures, traditions, and arts lend to New Mexico's greatness.

Photo: Dan Kaplan/Shutterstock.com

Internet: www.indianpueblo.org

Museum of Indian Arts & Culture



The Museum of Indian Arts and Culture dedicates itself to the preservation of local Native American heritage. Listen to the

stories and songs that span thousands of years of Southwestern history. If you're a history love or simply enjoy stories, it's a great way to spend your afternoon.

Photo: TORWAISTUDIO/Shutterstock.com

Address: 710 Camino Lejo, Santa Fe

Opening hours: November-May: Tue-Sun 10am-5pm,

May-October: Mon-Sun 10am-5pm

Phone: +1 505 476 1250

Internet: www.indianartsandculture.org

Email: miac.info@state.nm.us

Santa Fe Opera House



Even if you aren't a fan yet, you'll fall in love with opera after attending a production at the Santa Fe Opera House. With acclaimed singers from

around the world visiting, the opera produces grand productions from classical composers to modern day favorites. Call or go online to check out performance times.

Photo: Mario Lisovski/Shutterstock.com

Address: 301 Opera Drive, Santa Fe

Phone: +1 505 986 5900

Internet: www.santafeopera.org

Email: boxoffice@santafeopera.org

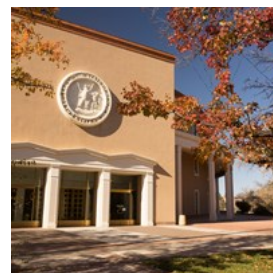
Santa Fe Trail



The Santa Fe Trail was a transportation route through central North America that connected Franklin, Missouri, with Santa Fe, New Mexico, during the 19th century. In 1821, the Santa Fe Trail became America's first international commercial highway, becoming one of the nation's great routes of adventure and western expansion for nearly six decades afterwards. Congress recognized the significance of the Trail to American history by proclaiming it a National Historic Trail in 1987. Now visitors and locals can partake in its amazing history.

Photo: Mariusz S. Jurgielewicz/Shutterstock.com

New Mexico State Capitol



The New Mexico State Capitol, known locally as the Roundhouse, is the seat of government in New Mexico. It is the only round state capitol in the United States. Designed to resemble the Zia Sun Symbol when viewed from above, there are consequently four entrance wings that protrude from a main cylindrical volume. Above each entrance is a stone carving of the State Seal of New Mexico. One of the building's levels is below ground.

Photo: Christopher Boswell/Shutterstock.com

Address: 490 Old Santa Fe Trail, Santa Fe

Opening hours: Mon-Fri 7am-6pm

Phone: +1 505 986 4589

Internet: www.nmlegis.gov

Email: lcs@nmlegis.gov

St. Francis Cathedral



St. Francis Cathedral is one of Santa Fe's historical gems. Serving as the representation of the Southwest's influential past under

Catholicism, the Cathedral is a cultural landmark. There are plenty of photograph opportunities with the beautiful interior and classical art. Daily masses are still held.

Photo: robert cicchetti/Shutterstock.com

Address: 131 Cathedral Place, Santa Fe

Opening hours: Mon-Sun 8.30am-5.45pm

Phone: +1 505 982 5619

Internet: www.cbsfa.org

Aspen Santa Fe Ballet



The Aspen Santa Fe Ballet features top global choreographers, groundbreaking works, and virtuoso dancers from the American west.

With locations in Aspen, Colorado, and Santa Fe, the Ballet forms a multifaceted arts organization. They curate quality dance programming for home audiences with dance education being the priority.

Photo: Africa Studio/Shutterstock.com

Address: 550 B St. Michaels Drive, Santa Fe

Opening hours: Hours vary by event.

Phone: +1 505 983 5591

Internet: www.aspensantafeballet.com

Fiestas de Santa Fe



"Viva la Fiesta!" has rang across the streets of Santa Fe for nearly 300 years. Every fall since 1712, people have gathered in Old Santa Fe to celebrate Don Diego De Vargas' peaceful reoccupation of the City of Holy Faith in 1692. The fiesta incorporates both local and Native American traditions, making it one of Santa Fe's most storied and treasured attractions.

Photo: Leonardo Gonzalez/Shutterstock.com

Phone: +1 505 913 1517

Internet: www.santafefiesta.org

Santa Fe Symphony & Chorus



The Santa Fe Symphony Orchestra & Chorus is a professional, full-sized orchestra with a volunteer chorus. They feature anyone from gold medalists, first prize winning soloists and beloved masterworks. Come hear one of their stunning performances while in town.

Photo: Stokkete/Shutterstock.com

Address: 551 W Cordova Road, Santa Fe

Phone: +1 505 983 3530

Internet: www.santafesymphony.org

Email: symphony@santafesymphony.org

The Burning of Zozobra



The Burning of Zozobra has been a Santa Fe Fiestas tradition since 1924. Created by Will Shuster, Zozobra is a giant marionette of sorts that is ceremoniously burned each year as a ritual effigy of Old Man Gloom. In burning

Zozobra, it is believed to dispel the hardships and trials of the past year. Attend the ceremony and watch your worries go up in flames.

Photo: LianeM/Shutterstock.com
Phone: +1 855 969 6272
Internet: www.burnzozobra.com
Email: burnhim@burnzozobra.com

Rodeo de Santa Fe



The Rodeo de Santa Fe began in 1949 when a group of individuals sought to organize a professional rodeo in Santa Fe. It remains one of the nation's top 60 Professional Rodeo Cowboy Association (PRCA) Rodeos. Check Rodeo de Santa Fe's website for information about upcoming events.

Photo: Gian Sapienza Photography/Shutterstock.com
Address: 3237 Rodeo Road, Santa Fe
Phone: +1 505 471 4300
Internet: www.rodeodesantafe.org

DINING



Andrey Bayda/Shutterstock.com

Looking for a great place to eat while in Santa Fe? You can indulge in the exquisite Mexican fare, aged steaks, and delicious local offerings. Santa Fe has restaurants suitable for every taste, so get started on your journey with the help of great food.

La Casa Sena



Located in the historic Sena Plaza, La Casa Sena itself was originally built in 1868 as a home by a notable family. You are invited to indulge in

notable meals and drinks. Chef Patrick Gharritty prepares modern Southwestern cuisine with a particular emphasis on sustainable and local products. Aztec dusted salmon and grilled New Mexico hanger steak are highlights of the menu.

Photo: Fanfo/Shutterstock.com
Address: 125 East Palace Avenue, Santa Fe
Opening hours: Mon-Sun 11am-9pm
Phone: +1 505 988 9232
Internet: www.lacasasena.com
Email: info@lacasasena.com

The Ranch House



Generous portions, reasonable prices and an endless amount of barbecue food. That's what The Ranch House is all about and known for.

The restaurant promises and most certainly delivers the quality that is expected by its visitors with dishes such as traditional barbecue baby back ribs and house smoked wings.

Photo: Alexander Rath/Shutterstock.com
Address: 2571 Cristo's Road, Santa Fe
Opening hours: Sun-Thu 11am-9pm, Fri-Sat 11am-10pm
Phone: +1 505 424 8900
Internet: www.theranchhousesantafe.com
Email: info@theranchhousesantafe.com

Plaza Cafe Southside



The restaurant that serves breakfast all day, every day. The menu is filled with breakfast items that will make your heart beat faster with

excitement. They are known for their high quality products that they use, ranging from grass fed antibiotic free beef to cage-free eggs. This is one of the reasons why the quality of the dishes is extremely high.

Photo: Lukas Gojda/Shutterstock.com

Address: 3466 Zafarano road, Santa Fe

Opening hours: Sun-Thu 8am-9pm, Fri-Sat 8am-10pm

Phone: +1 505 424 0755

Internet: www.plazacafesouth.com

Email: info@plazacafesouth.com

More Info: Happy hour is held everyday from 4pm-6pm

La Plazuela



A favourite restaurant of the locals, La Plazuela serves New Mexican cuisine with a modern twist. They prepare traditional recipes with

an unconventional approach, which makes the dishes unique. The interior is filled with the style of the Southwest, including a huge iron chandelier, which will make you feel like you've travelled back in time.

Photo: Xan/Shutterstock.com

Address: 100 East San Francisco Street, Santa Fe

Opening hours: Breakfast: Mon-Sun 7am-11.30am, Lunch:

June-October Mon-Sun 11.30am-3pm, November-May

Mon-Sun 11.30am-2pm, Dinner: Mon-Sun 5pm-10pm

Phone: +1 505 995 2334

Internet: www.lafondasantafe.com/la-plazuela

Email: canglin@lafondasantafe.com

More Info: Located in hotel La Fonda

Geronimo Restaurant



The classy "Borrego House" was built by Geronimo Lopez in 1756, allowing guests to dine in history. The interior is adorned in adobe walling,

kiva fireplaces, and wooden beams. As the recipient of the AAA Four Diamond and Mobil/Forbes 4 Star Awards, Geronimo needs little introduction. Executive chef/partner Eric DiStefano and chef de cuisine Paul Novak champion a "Global Eclectic" menu that changes seasonally.

Photo: arturasker/Shutterstock.com

Address: 724 Canyon Road, Santa Fe

Opening hours: Mon-Sun 5.30pm-9.30pm

Phone: +1 505 982 1500

Internet: www.geronimorestaurant.com

Email: geronimo@geronimorestaurant.com

Jambo Café



Consistently ranked as one of Santa Fe's favorite restaurants, Jambo Café brings a dash of African flavor and fun to the city. Under the helm of head

chef and owner Ahmed Obo, Jambo Café serves African and Caribbean inspired dishes. Obo enjoys working closely alongside other cooks, local ranchers, and farmers to bring the freshest of seasonal and local produce and ingredients.

Photo: AS Food studio/Shutterstock.com

Address: 2010 Cerrillos Road, Santa Fe

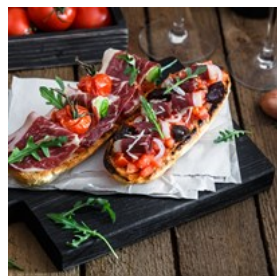
Opening hours: Mon-Sat 11am-9pm

Phone: +1 505 473 1269

Internet: www.jambocafe.net

Email: jambocafesf@gmail.com

El Mesón Restaurant and Tapas Bar



El Mesón is recommended by the Consulate of Spain as a premium venue for fine Spanish dining. For nearly 20 years, El Mesón

has dazzled Santa Fe with authentic Spanish flavors. The menu features tapas, paella, fine wines, and much more. Relax and dine with an atmosphere of soothing live music that harkens of Madrid.

Photo: Konstantin Kopachinsky/Shutterstock.com

Address: 213 Washington Avenue, Santa Fe

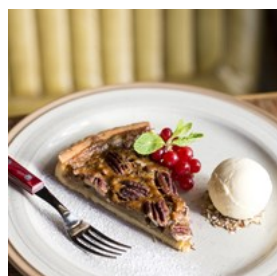
Opening hours: Tue-Sat: 5pm-11pm

Phone: +1 505 983 6756

Internet: www.elmeson-santafe.com

Email: info@elmeson-santafe.com

Restaurant Martin



Chef Martin Rios brings his award-winning progressive American cuisine to Santa Fe. Top flight, creative dishes inspire locals and visitors

to return time and time again to Restaurant Martin. Dinner entrées include Maine diver scallops, Maple Leaf Farm duck breast, a vegetarian tasting plate of sweet potato soufflé tart, manchego cheese poltana, quinoa croquettes, garlic spinach, maple roasted butternut squash, and king trumpet mushrooms, as well as other great selections.

Photo: E_Sh/Shutterstock.com

Address: 526 Galisteo Street, Santa Fe

Opening hours: Lunch: Tue-Fri 11.30am-2pm, Dinner:

Tue-Sun 5.30pm-close, Brunch: Sun 11.30am-2pm

Phone: +1 505 820 0919

Internet: www.restaurantmartin.com

Email: info@restaurantmartin.com

Luminaria



With chic, modern styling and contemporary décor, Luminaria is one of Santa Fe's finest. Chef Matt Ostrander crafts a menu of "conscious cuisine,"

ensuring a feast for the senses. Blending French, contemporary American, and Southwestern flavors, Ostrander creates signature dishes. Look for great selections of meat, seafood, and fresh produce. They serve breakfast, lunch, and dinner, as well as brunch on Sundays.

Photo: Andrey Bayda/Shutterstock.com

Address: 211 Old Santa Fe Trail, Santa Fe

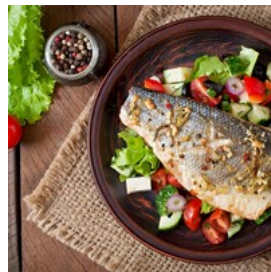
Opening hours: Mon-Sun 7am-2pm / 5pm-9pm

Phone: +1 505 984 7915

Internet: www.innatloretto.com

Email: innatloretto@gmail.com

Vinaigrette



Vinaigrette is a modern eatery that pairs bold salads with protein complements. The menu features items like diver scallops, lemon-herb

chicken, and grilled hanger steak that are served with a collection of fresh salads. The produce used is organically grown nearby on owner Erin Wade's 10-acre Nambe farm.

Photo: Timolina/Shutterstock.com

Address: 709 Don Cubero Alley, Santa Fe

Opening hours: Mon-Sat 11am-9pm

Phone: +1 505 820 9205

Internet: www.vinaigretteonline.com

Email: info@vinaigretteonline.com

India House



With genuine Indian cuisine that one customer described as being "better Indian Food than in LA," India House impresses easily. The menu is endlessly delicious, from great starters like the paneer pakoras and tandoori chicken wings to entrées like the jumbo prawns and raja dinner. Make sure to visit while in Santa Fe.

Photo: TMON/Shutterstock.com

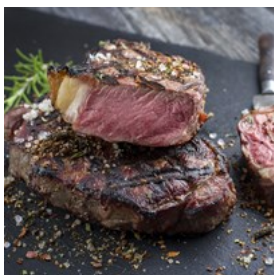
Address: 2501 Cerrillos Road, Santa Fe

Opening hours: Mon-Sun 11am-2.30pm / 5pm-9.30pm

Phone: +1 505 471 2651

Internet: www.indiahousenm.com

Anasazi Restaurant



Anasazi Restaurant serves fine Southwestern cuisine in an environment wrapped in elegance and esteem. The decor is rustic and lined with local

and regional art. Their signature dishes span the duck enchilada molé, diver scallops, Kurobuta pork belly, achiote grilled salmon, grilled elk tenderloin, and Angus beef duet with diablo sauce. The dress code is elegant and, though reservations are not required, they are recommended.

Photo: hlphoto/Shutterstock.com

Address: 113 Washington Avenue, Santa Fe

Opening hours: Breakfast: Mon-Sun 7am-10.30am, Lunch: Mon-Sun 11.30am-2.30pm, Dinner: Sun-Thu 5.30pm-10pm, Fri-Sat 5.30pm-10pm, Brunch: Sun 11am-2.30pm

Phone: +1 505 988 3236

Internet: www.rosewoodhotels.com

Email: Anasazi.foodandbeverage@rosewoodhotels.com

La Boca



Simply listing the accolades La Boca has received many guests more inclined to step into the Euro-inspired restaurant. Chef James is a seven-time James Beard Award Nominee for "Best Chef of the Southwest," and he was recently one of only four chefs nominated to compete in the Sherry Council of America's "Copa Jerez International Food and Sherry Pairing Competition." The restaurant itself won the Santa Fe Reporter's "Restaurant of the Year," and the International Wine and Food Society's "Award of Excellence." Enjoy a careful selection of Mediterranean and South American wines that pair nicely with Spanish cuisine.

Photo: Besjunior/Shutterstock.com

Address: 72 West Marcy Street, Santa Fe

Opening hours: Lunch: Mon-Sun 11.30am-3pm, Dinner:

Mon-Sun 5pm-10pm

Phone: +1 505 982 3433

Internet: www.labocasantafe.com

Rooftop Pizzeria



The Rooftop Pizzeria is located in the Santa Fe Arcade shopping center. Far more than the name implies, the Rooftop Pizzeria places guests in a chic dining room that mirrors New York and San Francisco, with an outdoor patio that gives way to grand sunset vistas. The pizza is always gourmet, along with their antipasti and salads. They serve fine wines and micro-brews as well. Hours vary by summer and winter.

Photo: Boiko Y/Shutterstock.com

Address: 60 East San Francisco Street, Santa Fe

Opening hours: Summer hours: Sun-Thu 11am-10pm, Fri-Sat

11am-11pm, Winter hours: Sun-Thu 11am-9pm, Fri-Sat 11am-10pm

Phone: +1 505 984 0008

Internet: www.rooftoppizzeria.com

Email: manager@rooftoppizzeria.com

Jinja Bar & Bistro



Jinja Bar & Bistro seeks to impress your palate with flavors from the Pacific Rim. Find dishes inspired by Japan, Hawaii, China, Thailand,

Vietnam, Singapore, and Malaysia. Customer favorites include the pad thai, teriyaki beef skewers, and steak frites. All of the dipping sauces and marinades are homemade.

Photo: Tatiana Bralnina/Shutterstock.com

Address: 510 North Guadalupe Street, Santa Fe

Opening hours: Mon-Fri 11am-10pm, Sat-Sun Noon-10pm

Phone: +1 505 982 4321

Internet: www.jinjabistro.com

Email: aloha@jinjabistro.com

Andiamo!



Enjoy authentic Italian cuisine in a warm ambiance at Andiamo! They serve salads, soups, gourmet pizzas, classic entrées, and scrumptious

sides. Lunch is served on weekdays and dinner is served daily.

Photo: George Dolgikh/Shutterstock.com

Address: 322 Garfield Street, Santa Fe

Opening hours: Lunch: Mon-Fri 11am-2pm, Dinner: Mon-Thu 5pm-9pm, Fri-Sat 5pm-9.30pm, Sun 5pm-9pm

Phone: +1 505 995 9595

Internet: www.andiamosantafe.com

Email: comments@andiamosantafe.com

CAFÉS



Chaloemphan/Shutterstock.com

If you're looking for a quick bite to eat or a delicious meal, visit one of Santa Fe's many cafés. Every type of food is available because of the enormous amount of restaurants. Grab a soup and sandwich or sit down for a delicious cup of coffee while watching the busy city pass you by.

35° North Coffee



The 35° North Coffee café has been described by the locals as their 'secret hidden treasure'. As you might guess, it's been a favourite coffee place of

the locals ever since it was established. They are known for their breakfast croissant, which is filled with scrambled egg, ham, green chile and white cheddar.

Photo: Brent Hofacker/Shutterstock.com

Address: 60 E San Francisco Street, Santa Fe

Opening hours: Mon-Sun 7am-5pm

Phone: +1 505 983 6138

Internet: www.35northcoffee.com

Email: manager@35northcoffee.com

Ohori's Coffee Roasters



Besides your regular latte macchiato or cappuccino, there is so much more that Ohori's Coffee Roasters has on offer.

They only use organic grown coffee beans and roast their coffee beans themselves. When you pay them a visit, try the unconventional butter coffee or red rooibos shot!

Photo: naito29/Shutterstock.com

Address: 505 Cerrillos Road Suite B103, Santa Fe

Opening hours: Mon-Fri 7am-6pm, Sat 8am-6pm, Sun 9am-2pm

Phone: +1 505 982 9692

Internet: www.ohoriscoffee.com

Email: ohorisfeedback@gmail.com

Modern General Feed And Seed



The little sister of the famous restaurant Vinaigrette has made a name for itself. Besides sandwiches and toasts, they mainly focus on their

savory, sweet and plain cakes. They have a huge variety of goodies, such as the red pepper Sonora cake, coconut cake and prosciutto & robiola corn cake.

Photo: Iuliia Timofeeva/Shutterstock.com

Address: 637 Cerrillos Road, Santa Fe

Opening hours: Mon-Sat 8am-5pm, Sun 9am-4pm

Phone: +1 505 930 5462

Internet: www.moderngeneralfeedandseed.com/

Email: info@moderngeneralnm.com

Dulce Capital



As you might have guessed when you read the name of this bakery, it is filled with all sorts of sweet treats. It's a great way to start your

morning, with a cup of coffee and a Danish on the side. For the customers who would rather prefer something less sweet, fear not, there are also plenty of savory items on the menu!

Photo: Barbro Bergfeldt/Shutterstock.com

Address: 1100 Don Diego Avenue, Santa Fe

Opening hours: Mon-Sat 7am-5pm, Sun 9am-2pm

Phone: +1 505 989 9966

Internet: www.dulcecapital.com

Email: hello@dulcebakery.com

Downtown Subscription



The oldest coffee shop in Santa Fe with a newsstand and filled with baked goods, beverages and sandwiches.

Downtown Subscription has been beloved by the locals since it has been established. It's the perfect place for a relaxing morning or afternoon, just reading a paper or a magazine and let yourself drift away in the articles whilst sipping your worries away.

Photo: mavo/Shutterstock.com

Address: 376 Garcia Street, Santa Fe

Opening hours: Mon-Sun 7am-6pm

Phone: +1 505 983 3085

Email: downtownsubscription@gmail.com

The Pantry Restaurant



The restaurant stays true to its roots and focuses on the Tex-Mex cuisine what the customers seem to love. The Pantry Restaurant was

established over 70 years ago and is still as popular. The loyal customers comes for the quality food and enjoy food like traditional Santa Fe Beef Brisket.

Photo: zoryanchik/Shutterstock.com

Address: 1820 Cerrillos Road, Santa Fe

Opening hours: Mon-Sat 6.30am-8.30pm, Sun 7am-8.30pm

Phone: +1 505 986 0022

Internet: www.pantrySantaFe.com

Email: info@pantrySantaFe.com

Plaza Cafe Downtown



The Plaza Cafe opened in 1905 and hasn't looked back since! As the oldest restaurant in Santa Fe, the Plaza Cafe knows good service and great

food inside out. They serve breakfast, lunch, and dinner, and offer a full bar all day.

Photo: Tatiana Bralnina/Shutterstock.com

Address: 54 Lincoln Avenue, Santa Fe

Opening hours: Mon-Thu 7am-8pm, Fri-Sun 7am-9pm

Phone: +1 505 982 1664

Internet: www.plazaCafeSantaFe.com

Email: info@santaFePlazaCafe.com

Holy Spirit Espresso



Holy Spirit Espresso is a one-man coffee shop that's truly one of Santa Fe's own. The almond milk latte comes highly recommended, along with

the cinnamon rolls. Vintage postcards are sold as well, so feel free to browse as he makes your drink.

Photo: GoWithLight/Shutterstock.com

Address: 225 West San Francisco Street, Santa Fe

Opening hours: Tue-Sat 7am-4pm, Sun 7am-2pm

Phone: +1 505 920 3664

Internet: www.holyspiritEspresso.com

Email: coffeeflower@msn.com

Sage Bakehouse



Sage Bakehouse prepares its products in the French "pain tradition," meaning all baked goods are naturally leavened, hand-formed, fermented,

and baked directly on the hearth of a French oven. Their breads find their way to northern New Mexico's finest food shops, restaurants, and hotels as a result. Grab a flaky croissant or sweet cookie to start off your day, and munch on a rustic apple tart or chocolate-hazelnut torte for after hours.

Photo: MaraZe/Shutterstock.com

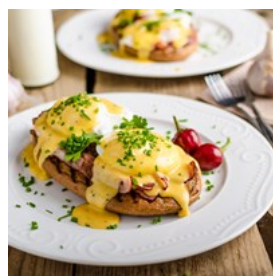
Address: 535 Cerrillos Road, Santa Fe

Opening hours: Mon-Sat 7.30am-2.30pm

Phone: +1 505 820 7243

Internet: www.sageBakehouse.com

Chez Mamou French Café & Bakery



Simply mutter the words "cheese danish" and Chez Mamou will instantly come to mind for Santa Fe locals. Chez Mamou French Café & Bakery

boasts a wonderfully delicious menu of breakfast and lunch items in true French fashion. Paired with fresh roasted coffee, enjoy dishes such as the mushroom crepe, croque madam, and the

eggs benedict.

Photo: Stepanek Photography/Shutterstock.com

Address: 217 East Palace Avenue, Santa Fe

Opening hours: Mon-Sun 7.30am-9.30pm

Phone: +1 505 216 1845

Internet: www.chezmamou.com

Email: chezmamou217@gmail.com

Museum Hill Cafe



Championing "wine with a view," the Museum Hill Cafe has spectacular cuisine in a refined atmosphere. House specialties include the

likes of smoked duck flautas, Asian shrimp tacos, and housemade mushroom taquitos, while an extensive drinks menu begs a glance. Choose from red, white, rosé, and dessert wines, beer, and sparkling or specialty drinks.

Photo: Teri Virbickis/Shutterstock.com

Address: 710 Camino Lejo, Santa Fe

Opening hours: Mon-Sun: 11am-3pm

Phone: +1 505 984 8900

Internet: www.museumhillcafe.net

Email: museumhillcafe@gmail.com

Iconik Coffee Roasters



Iconik Coffee Roasters are indeed so, with the finest coffees and teas around. They roast all direct trade coffees by hand - in house - and

their teas are selected from award-winning estates. Baked goods are handmade daily, while the bacon is from local farms, cured and smoked just for Iconik.

Photo: pangcom/Shutterstock.com

Address: 1600 Lena Street, Santa Fe

Opening hours: Mon-Sat 7.30am-8pm, Sunday 8am-5pm

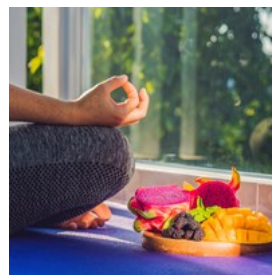
Phone: +1 505 428 0996

Internet: www.iconikcoffee.com

Email: info@iconikcoffee.com

More Info: Second location at 314 S Guadalupe St.

BODY By Nature



Located in a yoga studio, the BODY Cafe refreshes with vegan and vegetarian fare. Also find organic wine, beer and sake, along with raw

organic truffles. It's the perfect place to stop after rejuvenating your spirit with yoga or while out on a busy day of sightseeing.

Photo: Elizaveta Galitckaia/Shutterstock.com

Address: 333 West Cordova Road, Santa Fe

Opening hours: Mon-Sat 8.30am-8.30am-6pm

Phone: +1 505 986 0362

Internet: www.bodyofsantafe.com

Email: info@bodyofsantafe.com

Collected Works Bookstore & Coffeehouse



The Collected Works Bookstore & Coffeehouse serves up fresh, locally roasted organic coffee to go along with your morning or afternoon

read. They also have a full menu of espresso drinks, Mighty Leaf tea, Bhakti Chai, Ghiradelli hot chocolate, and organic apple cider. If you're hungry as well, they carry fresh burritos and deli sandwiches from Tesuque Village Market.

Photo: StudioByTheSea

Address: 202 Galisteo Street, Santa Fe

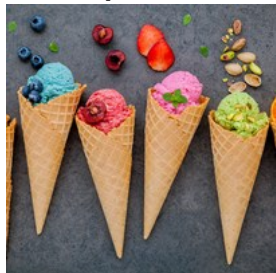
Opening hours: Mon-Sat 8am-8pm, Sun: 8am-6pm

Phone: +1 505 988 4226

Internet: www.collectedworksbookstore.com

Email: info@collectedworksbookstore.com

Ecco Espresso and Gelato



Ecco serves locally roasted artisan coffee and hand-pulled espresso beverages. To satisfy your sweet tooth and escape the desert sun, ECCO

also serves handmade gelato using local, organic ingredients. Be sure to stop in one afternoon while taking a break from shopping and sightseeing.

Photo: Kerkanno/Shutterstock.com

Address: 105 East Marcy Avenue, Santa Fe

Opening hours: Mon-Thu 7am-9.30, Fri, 7am-10pm, Sat 8am-10pm, Sun 8am-8pm

Phone: +1 505 986 9778

Internet: www.eccogelato.com

Email: santafe@eccogelato.com

BARS & NIGHTLIFE



Picnote/Shutterstock.com

Santa Fe has many different bars and lounges that can accommodate anyone's taste for enjoyment. One of the country's best bars, Agave Lounge, is located in the desert oasis. Find fantastic wine flights at several locations, or, if beer is more to your taste, several breweries and handcrafted brews are always on tap.

Second Street Brewery



Since their opening in December 1996, Second Street Brewery has sold over three million pints of beer. With their handcrafted beers with

hops from Germany, England, and the Pacific Northwest, everyone will find a beer that suits his or her taste buds.

Photo: Valentyn Volkov/Shutterstock.com

Address: 1814 Second Street, Santa Fe

Opening hours: Mon-Thu 11am-10pm, Fri-Sat 11am-11pm, Sun Noon-10pm

Phone: +1 505 982 3030

Internet: www.secondstreetbrewery.com

Email: info@secondstreetbrewery.com

Low 'n Slow Featuring HAWT Pizza



Set foot in the Low 'n Slow Lowrider bar and it will feel like you have arrived at a high quality garage. The bar interior is inspired by the famous

book written by Jack Parson and Carmella Padilla. There are special cocktails created by mixologist and will make sure that you will have a care-themed experience of a lifetime!

Photo: rangizzz/Shutterstock.com

Address: 125 Washington Avenue, Santa Fe

Opening hours: Mon-Fri 2pm-Midnight, Sat-Sun Noon-Midnight

Phone: +1 505 988 4900

Internet: www.hotelchimayo.com/dining-nightlife

Email: HotelChimayo@HHandR.com

More Info: Located in Hotel Chimayó

BOXCAR



Matches, live bands, great food and amazing beverages. Beloved by locals, this is BOXCAR in a nutshell. What they are also known for is their green chili and the fries. While listening to the music or watching a game, order one of their many dishes and grab a drink to create your perfect night!

Photo: Esdelval/Shutterstock.com

Address: 530 South Guadalupe Street, Santa Fe

Opening hours: Mon-Fri 11.30am-2am, Sat 11am-2am, Sun 11am-Midnight

Phone: +1 505 988 7222

Internet: www.boxcarsantafe.com

Email: boxcar.santafe@gmail.com

Thunderbird Bar & Grill



If you are looking for traditional New Mexico dishes with a twist, look no further. The Thunderbird Bar & Grill has crafted the art of making contemporary dishes that are loved by the locals. But let's not forget about the cocktails, one of their most popular cocktails is the Prickly Pear with ingredients that can only be found in New Mexico.

Photo: santypan/Shutterstock.com

Address: 50 Lincoln Avenue, Santa Fe

Opening hours: Sun-Thu 11.30am-9pm, Fri-Sat 11.30am-10pm

Phone: +1 505 490 6550

Internet: www.thunderbirdsantafe.com

Email: thunderbirdbarandgrill@gmail.com

Draft Station



Draft Station is all about making sure that New Mexico's brewers and their amazing beers are supported. They have a great amount of local beers poured from no less than fourteen tap handles. Some of the most popular beers are from the Blue Corn Brewery and Chama River Brewing Company.

Photo: Africa Studio/Shutterstock.com

Address: 60 East San Francisco Street, Santa Fe

Opening hours: Mon-Sun Noon-10pm

Phone: +1 505 983 6443

Internet: www.draft-station.com

Email: info@draft-station.com

Secreto Lounge



Secreto Lounge is a premier cocktail bar specializing in award-winning "Garden-To-Glass" and vintage cocktails. All cocktails are crafted with the finest of local fruits, vegetables, herbs, spirits, and bitters. Locals love the Agave Way, while Secreto's signature drink is the Spicy Secreto.

Photo: 5PH/Shutterstock.com

Address: 210 Don Gaspar Avenue Suite A, Santa Fe

Opening hours: Mon-Sat 4pm-11pm, Sun 4pm-10pm

Phone: +1 505 983 5700

Internet: www.secretolounge.com

Email: HSFinfo@hhandr.com

Agave Lounge



Sleek sophistication leaks from the Agave Lounge. Located at the illustrious Eldorado Hotel & Spa, Agave features a menu of shared plates, specialty

cocktails, and wine by the glass. Enjoy appetizers while sipping on signature martinis, premium cocktails, and more.

Photo: Kzenon/Shutterstock.com

Address: 309 West San Francisco Street, Santa Fe

Opening hours: Mon-Sun 11am-10.30pm

Phone: +1 505-995 4530

Email: eldoradohotel@hhandr.com

The Dragon Room Lounge



The Dragon Room Lounge is widely recognized for its haute atmosphere, great drinks menu, and Pink Adobe ambiance.

The "Santa Fe Reporter"

named it "top bar in Santa Fe," and "International Newsweek" named it "one of the top 19 bars in the world." Indulge in the atmosphere of greenery and trees, along with the art deco walls and pure sophistication. Breakfast, lunch, and dinner are also served every Tuesday through Sunday, and reservations are recommended.

Photo: Cristi Lucaci/Shutterstock.com

Address: 406 Old Santa Fe Trail, Santa Fe

Opening hours: Tue-Sun 4pm-11pm

Phone: +1 505 983 7712

Internet: www.thepinkadobe.com/dragonroom.php

Email: pinkadoberestaurant@gmail.com

Bull Ring



The Bull Ring has been a staple of Santa Fe since 1971. A favorite of politicians, they set aside their differences to partake in a great meal

when the Legislature is in session. As one of the area's finest steakhouses, guests dine on tender steaks, chops, ribs, and fresh lobster tails. They serve USDA Prime corn-fed Midwestern beef that has been aged to perfection, hand-cut and prepared in specially-built broilers. Pair your meal with a selection from their extensive wine list as well. Their bar menu is served all day, every day.

Photo: AVN Photo Lab/Shutterstock.com

Address: 150 Washington Avenue Suite 108, Santa Fe

Opening hours: Lunch: Tue-Fri 11.30am, Dinner: Sun-Thu

5pm-Last seating 9pm, Fri-Sat 5pm-Last seating 9.30pm

Phone: +1 505 983 3328

Internet: www.santafebullring.com

Email: bullringsantafe@yahoo.com

Sweetwater Harvest Kitchen



The Sweetwater Harvest Kitchen offers a wide selection of craft brews and wines on tap. Their wine-on-tap program was the first in New Mexico.

The menu features fresh, seasonal ingredients and international foods with freshly milled flour.

Photo: Africa Studio/Shutterstock.com

Address: 1512 Pacheco Street Building B, Santa Fe

Opening hours: Mon 8am-3pm, Tue-Fri 8am-9pm, Sat

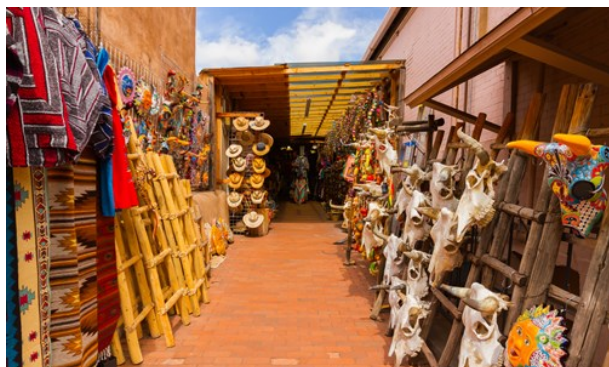
9am-9pm, Sun Brunch: 9am-2.30pm

Phone: +1 505 795 7383

Internet: www.sweetwatersf.com

Email: kitchen@sweetwatersf.com

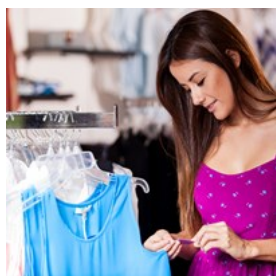
SHOPPING



Z.C.Person/Shutterstock.com

Shopping in Santa Fe can be in adventure in itself. Ranging from small and charming shops, boutiques, and shopping malls, you are guaranteed to find what you're looking for. Make sure to visit some of the local galleries with outdoor sculptures, and be sure you pick up some handcrafted silver and turquoise jewellery.

Fashion Outlets of Santa Fe



Find a wealth of weekly specials and daily deals at the only shopping outlet in New Mexico. Fashion Outlets of Santa Fe features designer brands such as Nike Factory Store, Polo Ralph Lauren, Nine West, Levi's, Tommy Hilfiger and more. Stop by and check out the great deals.

Photo: antoniodiaz/Shutterstock.com

Address: 8380 Cerrillos Road, Santa Fe

Phone: +1 505 474 4000

Internet: www.fashionoutletssantafe.com

Email: info@fashionoutletssantafe.com

Santa Fe Farmers Market



Local food, art, clothing and anything that you can imagine can be found at the market. The Santa Fe Farmers Market has been a favourite hot spot of the

locals since their establishment in 1968. The market has indoor and outdoor stalls, so you can enjoy it whether there is rain or sunshine!

Photo: Lipskiy/Shutterstock.com

Address: 1607 Paseo de Peralta, Santa Fe

Opening hours: June-September Sat 7am-1pm, October-May Sat 8am-1pm, May-December Tue 7am-1pm

Phone: +1 505 983 4098

Internet: www.santafefarmersmarket.com

Email: info@santafefarmersmarket.com

Santa Fe Place Mall



Santa Fe Place is a great mall for clothing, accessories, fine gifts, beauty services, food, and much more. Find over 70 retailers, including

Dillard's and JCPenney, Gap/Gap Kids, Bath & Body Works, The Children's Place, Victoria's Secret, Sports Authority, and Toys 'R' Us Express. It is a place where the whole family can find something.

Photo: svastika/Shutterstock.com

Address: 4250 Cerrillos Road, Santa Fe

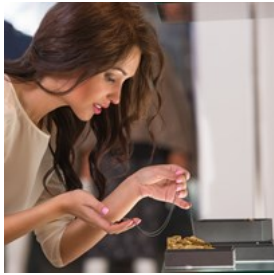
Opening hours: Mon-Sat 10am-9pm, Sun Noon-6pm

Phone: +1 505 473 4253

Internet: www.shopsantafeplace.com

Email: info@shopsantafeplace.com

James Kallas Jewelers



James Kallas Jewelers is a local custom jewelry and repair shop. Their jewelry is designed and produced in-house, allowing for entirely unique pieces. All of their pieces are exquisitely designed and crafted.

Photo: Milles Studio/Shutterstock.com
Address: 2801 Rodeo Road Suite B10, Santa Fe
Opening hours: Tue-Sat 10am-5.30pm
Phone: +1 505 986 1955
Internet: www.jameskallasjewelersinc.com
Email: jameskallasjewelerssantafe@gmail.com

The Plaza



The Plaza is listed on the National Registry of Historic Places. Embrace the local history with landmarks and museums, as well as great shopping and dining options. The center square features displays from Native Americans selling handmade jewelry, dolls, pottery, woven baskets, and more.

Photo: Beatrice Murch(image cropped)
Address: 63 Lincoln Avenue, Santa Fe
Opening hours: Mon-Fri 8am-5pm
Phone: +1 505 955 6200

KOWBOYZ



Having outfitted Brad Pitt, Sylvester Stallone, Elton John, Jay Leno, Madonna, Mickey Rourke, Sean Penn, Julia Roberts, Britney Spears, Bruce Willis, and even Slash, KOWBOYZ is 100% authentic Western. As the go-to shop for

everything Western wear, KOWBOYZ boasts 5,000 pairs of new and vintage cowboy boots for men, women and children. They also have hats, shirts, belts, buckles, skirts, and western curios.

Photo: bikeriderlondon/Shutterstock.com
Address: 345 West Manhattan Avenue, Santa Fe
Opening hours: Mon-Sun 10am-5.30pm
Phone: +1 505 984 1256
Internet: www.kowboyz.com
Email: cristina@kowboyz.com

Native Jackets



Native Jackets offers the best in Navajo-inspired jackets, vests, and blankets. They also feature museum-quality contemporary and antique native rugs, pots, and baskets. Choose from the garments you see on their website or in store, or you may choose your favorite blanket and they can make a garment from your choice. The native rugs, pots, and baskets are among the finest available. Artists include Maria Martinez, Margaret Tafoya, Daisy Taugelchee, and many more.

Photo: Trudy Wilkerson/Shutterstock.com
Address: 66 East San Francisco Street Suite 11, Santa Fe
Opening hours: Mon-Sun 9.30am-6pm
Phone: +1 505 984 0005
Internet: www.nativejackets.com
Email: connected@nativejackets.com

Casa Nova



Casa Nova features traditional tribal and contemporary art from around the world. This must see shop is a great destination for gifts and home decor, with arts, crafts and design pieces

from Southern Africa and other nations. Be sure to pick up one-of-a-kind articles to take back home.

Photo: Sopotnicki/Shutterstock.com
Address: 530 South Guadalupe Street, Santa Fe
Opening hours: Mon-Sat 10am-5pm
Phone: +1 505 983 8558
Internet: www.casanovagallery.com
Email: info@casanovagallery.com

Ghost Pony Gallery



At Ghost Pony Gallery, guests will find contemporary, regional oil paintings and iconic botanical paintings on gold leaf. Many pieces

are reminiscent of Diego Rivera, Georgia O'Keeffe, and other modernists. Their art selection is vast with a Southwestern flair.

Photo: Denis Kuvaev/Shutterstock.com
Address: 1634 State Highway 76, Truchas
Phone: +1 505 689 1704
Internet: www.ghostponygallery.com
Email: ghostponygallery@gmail.com

TOURIST INFORMATION



douglas knight/Shutterstock.com

Santa Fe Municipal Airport



Santa Fe Municipal Airport serves the Santa Fe area. It services the following airlines: American Eagle, Great Lakes Airline, United

Airlines and Frontier Airlines. American Eagle provides regional jet service to and from Dallas-Fort Worth International Airport and flights to and from Los Angeles International Airport. Great Lakes Airlines offers twice daily flight service between Santa Fe and Denver.

RoadRunneR Shuttle & Charter
+1 505 424 3367
Daily: 8:00AM - 6:00PM

Sandia Shuttle Express
2875 Industrial Rd, Santa Fe, NM 87507, United States
+1 505 474 5696

Photo: Juan Garces
Address: 121 Aviation Dr, Santa Fe
Phone: +1 505 955 2900
Internet: www.santafenm.gov/airport

Best Time to Visit



The best time to visit Santa Fe is between the months of September to November. The fall has moderate temperatures, ranging from 30 to 12 degrees Celsius. There are also a lot of festivals and there are fewer tourists than during the summer season.

Photo: VectorA

Public Transport



Several public transportation options operate the Santa Fe area. The New Mexico Rail Runner Express is a commuter rail service

operating in Valencia, Bernalillo (including Albuquerque), Sandoval, and Santa Fe Counties. Santa Fe is served by the Santa Fe Depot, South Capitol and Santa Fe County/NM 599.

The New Mexico Park and Ride and the North Central Regional Transit District operate weekday commuter coach/bus service to Santa Fe from Torrance, Rio Arriba, Taos, San Miguel and Los Alamos Counties.

Photo: Pierre-Luc Auclair

Taxi



The following taxi services are available for the Santa Fe area: 505 Star Limo +1 505 848 9999 Capital City Cab +1 505 438 0000

Photo: Unknown

Post

US Post Office



Photo: Andy Fuchs

Address: 534 N Guadalupe Street, Santa Fe

Phone: +1 505 983 8935

Pharmacy



Del Norte Pharmacy & Home Med 1691 Galisteo Street +1 505 988 9797
Pharmaca Integrative Pharmacy 530 W Cordova Road +1 505 820 7690

Photo: Gemma Garner

Telephone



Country Code: +1 Area Codes in Santa Fe: 505

Photo: Jardson Almeida

Electricity



110V AC, 60Hz

Photo: Stirling Tschan

Population

83,875

Currency

\$1 dollar (USD) = 100 cents

Opening hours

Most stores are open Monday-Sunday from 9am to 6pm or later. Bars and clubs tend to close around 2am.

Internet

www.santafe.org

Newspapers

Santa Fe New Mexican
Santa Fe Times
Santa Fe Reporter

Emergency numbers

911

Tourist information

Santa Fe Convention and Visitors Bureau
201 W. Marcy Street
+1 800 777 2489

