



Photo: [www.visitplovdiv.com](http://www.visitplovdiv.com)



[www.visitplovdiv.com](http://www.visitplovdiv.com)

The city of Plovdiv is the second largest city in Bulgaria and one of the best-preferred travel destinations, not only because of its huge cultural and archaeological heritage, but also due to its central location, offering a variety of tourist attractions and activities.

Due to the diverse opportunities for tourism, the city has been listed in a number of prestigious ranks, among which European Best Destinations 2016.

In 2019 Plovdiv will be European Capital of Culture.



[www.visitplovdiv.com](http://www.visitplovdiv.com)



Stoyan Stoyanov

## Featured



**Regional Natural Science M...**  
The Tropical Hall of Regional Natural History Museum presents over 15 living...



**City Art Gallery - Permane...**  
The exposition is housed in the building of the Young Girls' College, design...



**Regional Natural Science M...**  
The museum displays a variety of expositions, including those of Minerals, F...

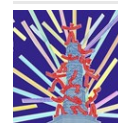


**City Art Gallery - Halls f...**  
The exhibition spaces are housed in a building with a typical urban architec...



**City Art Gallery - Exposit...**  
In his works Tsanko Lavrenov demonstrates a deep sincere devotion to the mon...

## Top 5



**We Are All Colors - 11-13/...**  
We Are All Colors 11 - 13  
January 2019 Tobacco City,  
Kapana - Creative D...



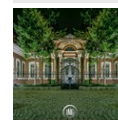
**2018 Selected Events**  
Opera Open 09.06 - 13.09  
International festival  
spectacularly staged at the...



**Panagyurishte Golden Treas...**  
The treasure consists of nine  
golden vessels with a total  
weight of 6.100 kg...



**Regional Archaeological Museum**  
The Regional Archaeological  
Museum is one of the oldest



**Regional Historical Museum...**  
The exposition of Unification of  
Bulgaria - 1885 has been  
arranged in the bu...



## THE ANCIENT CITY



[www.visitplovdiv.com](http://www.visitplovdiv.com)

Life in Plovdiv has never ceased since its first inhabitants - Thracian tribes, settled down about 8,000 years ago. Due to this fact it has been proclaimed by Daily Telegraph 'The Oldest Continuously - Inhabited City in Europe'.

In IV century BC Philip II of Macedon conquered the city and gave it one of its most popular names - Philippopol. Philippopol played an important role in formation of Hellenistic culture.

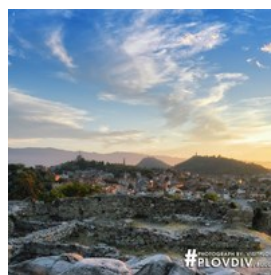
In 46 AD Thrace became a Roman province and Plovdiv was given the name Trimontium (City on Three Hills), but citizens often referred to it with its previous name - Philippopol. Later it was proclaimed a metropolitan city of the Thracian province. After the separation of the Roman Empire, it became part of the Byzantine Empire, until it was first conquered by Bulgarians under Khan Krum in 812.

During the Ancient period, Philippopol became a city as significant as it is nowadays. In the last 8 millennia, representatives of various civilizations left their imprint and created unique of its kind cultural heritage. Doubtlessly, the cultural sites from the Roman period are among the most well-preserved in the modern city.

As a metropolitan city of the Roman province of Thrace, Philippopol was gradually equipped with all the commodities, typical for a leading administrative center: a Forum and Odeon,

magnificent theatre - venue of cultural life not only in Antiquity, but also in the modern city, a huge stadium, which hosted games, resembling the Olympic games, as well as Aqueducts. Soon after Christianity was legalized in the beginning of VI century, the city became an important religious center.

### Archaeological Complex Nebet Hill



The earliest settlements on the territory of Plovdiv are dated back to the VI millennium BC. There were several Prehistoric settlements on the

territory of the modern city, but the oldest and most important one was located on a hill known as Nebet tepe.

During the Hellenistic period the town began to spread towards the foot of the hills. At Nebet Hill there are found ruins of dwellings and fortifications dating from this period.

The complex of Nebet tepe continued to play an important role as a part of the fortification system of the city until the XIV century. A notable finding of that later period is a water reservoir of 350 cubic meters.

Photo: [www.visitplovdiv.com](http://www.visitplovdiv.com)

Address: The Old Town, Plovdiv 4000

Internet: [www.visitplovdiv.com/en/node/521](http://www.visitplovdiv.com/en/node/521)

Email: [tourism@plovdiv.bg](mailto:tourism@plovdiv.bg)

### Roman Mosaics of Ancient Philippopol - Candidate for the UNESCO World Heritage List



Plovdiv is currently a candidate for the UNESCO World Heritage List with its perfectly-preserved Roman mosaics in 3

different locations - the Bishop's basilica, the Early-Christian Small Basilica and Ancient Residential Building 'Eyrene'.

The Bishop's basilica is the biggest early-Christian temple found on the territory of Bulgaria. It impresses not only with its dimensions - 36 m of width and 90 m of length, but also with its unique architecture, including nearly 2000 sq. m. of mosaics in two layers. The earliest data for the temple are from IV-VI century. The temple was presumably among the first early-Christian temples built after the Roman empire adopted Christianity as an official religion.

The temple will be open for visitors in 2019. Diversity of beautiful Roman mosaics can also be explored in the Small Basilica and Ancient Residential Building 'Eyrene'.

Photo: [www.visitplovdiv.com](http://www.visitplovdiv.com)  
Address: Mariya Luiza Blvd.

### Ancient Theatre



Plovdiv is proud of having one of the most well-preserved ancient theatres in the World, which is also one of the biggest open-air stages on the Balkans.

The Ancient theatre of Philippopolis, which has been built in the 90s of I century, is one of the best-preserved ancient theatres in the World. Located in the saddle between Taksim and Dzhambaz Hills in the Old Town, it was one of the main public buildings in the ancient city. Apart from theatre performances, the theatre was a venue of gladiator and hunting games, with capacity of 6 000 spectators. Top events take place here during the summer season, such as the Opera Festival "Opera

Open", the International Folklore Festival and the Rock Festival "Sounds of Ages".

Photo: Visit Plovdiv  
Address: Tsar Ivaylo Str., Plovdiv  
Opening hours: Monday - Sunday: 9:00 a.m. - 5:30 p.m.  
Phone: 00359 32 634 008  
Tickets: Individual: Adults - 5 BGN; Children and students - 2 BGN; Combined tickets for 5 sights: 15 BGN  
Internet: <http://oldplovdiv.com/en/sights/3>  
Email: [info@oldplovdiv.com](mailto:info@oldplovdiv.com)  
More Info: <http://www.visitplovdiv.com/en/node/522>

### Roman Stadium



The Roman Stadium was constructed in II century during the reign Emperor Hadrian, following the model of the Delphic Stadium. Its Southern part can be seen nowadays, located between Taksim Hill and Sahat Hill.

The facility was approximately 240 meters long and 50 meters wide and could accommodate up to 30 000 spectators.

The epigraphic and numismatic research of the artefacts discovered there prove that games similar to the Pythian Games in Greece were held in the city. Alexandrian games were held here in 214 to honour the visit of the Roman emperor Caracalla and Kedrisian Games were carried out in 218 for the visit of emperor Elagabalus.

The Roman Stadium was proclaimed a Cultural Site of National Value in 1995.

Photo: Visit Plovdiv  
Address: Roman Stadium Sq, Main Shopping Street, Plovdiv  
Opening hours: Monday - Sunday: 9:00 a.m. - 5:30 p.m.  
Phone: +359 876 662 881  
Tickets: Free Entry; Tickets for 3D projections: 6 BGN (give free entry to Stambolyan's House)  
Internet: [www.ancient-stadium-plovdiv.eu](http://www.ancient-stadium-plovdiv.eu)  
Email: [info@oldplovdiv.com](mailto:info@oldplovdiv.com)

More Info: <http://www.visitplovdiv.com/en/node/523>

### Forum of Philippopol



The Forum (Agora) of Philippopol was an administrative, commercial and religious center of the ancient city, a square where debates

and various public meetings were taking place. It was situated on the foots of the three hills, in the central part of Philippopolis. With its area of 20 acres, it is the biggest forum complex in Bulgaria, which corresponds to the paramount importance of Philippopolis as a Metropolis of the Thracian province. Its ruins can be seen at the Central square on the Main Shopping Str., along with those of the Odeon of Philippopol.

Photo: Visit Plovdiv

Address: Central Square, Main Shopping Street, Plovdiv 4000

Internet: <http://oldplovdiv.com/en/sights/7>

More Info: <http://www.visitplovdiv.com/en/node/524>

### Odeon of Philippopol



The Odeon of Philippopolis is situated at the North-East end of the Ancient Forum (Agora). The presence of a such a building in the

central part of the Ancient city gives grounds to assuming the great importance of Philippopolis as a cultural and political centre.

The building is supposed to have originally served as bouleuterion (town hall), but research on later periods of construction indicate it was also used as a theatre. According to the archaeological findings, the building has had four periods of construction between I and IV century AD.

The researches and analyses show that the Odeon has all the elements typical for theatres: a skene, orchestra and cavea.

Photo: Visit Plovdiv

Address: 12 General Gurko Str., Plovdiv 4000

Opening hours: Closed for reconstruction

Tickets: Free Entry

Internet: <http://oldplovdiv.com/en/sights/7>

Email: [info@oldplovdiv.com](mailto:info@oldplovdiv.com)

More Info: <http://www.visitplovdiv.com/en/node/525>

### Early Christian Basilica



The basilica was built in the second half of V century AD and has diverse architectural decorations – marble colonnades separating

the aisles, marble altar wall, pulpit and synthronos. There is variety of colorful mosaics with geometrical motives covering the whole floor .

Two donor inscriptions were found during excavation works. One of them was carved on the lining marble slab from the altar of the basilica. The other was shaped in the mosaic of red tesserae on white background, just opposite to the altar apse. The name on it has been erased, but it probably refers to Basilisk, a Byzantine Emperor in 475-476 AD.

Photo: Visit Plovdiv

Address: 31 Knyaginya Maria Louisa Blvd

Opening hours: Monday - Sunday: 9:00 a.m. - 5:30 p.m.

Phone: 00359 876 662 882

Tickets: Individual: Adults - 5 BGN; Children and students - 2 BGN; Combined tickets for 5 sights: 15 BGN

Internet: [www.romanplovdiv.org/en](http://www.romanplovdiv.org/en)

Email: [info@oldplovdiv.com](mailto:info@oldplovdiv.com)

More Info: <http://www.visitplovdiv.com/en/node/675>



### Ancient Residential Building Eyrene



The peristyle building from the end of the III century is located in the heart of the Ancient Philippopol and used to cover an area of nearly 1 600 sq.m.

The incredible floor mosaics in this residential building combine pictorial elements from both the Eastern and Western Roman provinces. It is popular as Eyrene because of the excavated mosaics, depicting an image of a woman with the same name.

The renovated Southern part of the building is also a cultural center, a venue of concerts, book presentations and public discussions.

Photo: Visit Plovdiv

Address: Archaeological Underpass, Tsar Boris III Obdinitel Blvd.

Opening hours: Monday - Sunday: 10:00 a.m. - 6:00 p.m.

Phone: +359 32 631 303 , +359 882 877 080, +359 888 304 851

Tickets: Individual: Adults - 5 BGN; Children and students - 3 BGN;

Internet: <http://trakart.org/en/>

Email: [artcentre@abv.bg](mailto:artcentre@abv.bg)

More Info: <http://www.visitplovdiv.com/en/node/526>

### Aqueduct of Philippopol



Romans have come to one of the most spectacular inventions in terms of water supply during the Antiquity - the aqueducts.

These were the most

expensive public facilities built during the Roman period and such an investment was made in very few cities, including Philippopol.

The Ancient Philippopol was supplied with fresh water from the Rhodopes. Two main water captations were found near the present-day

villages of Kuklen and Markovo.

The aqueduct of Philippopol was built in II - III century. It consists of the two major pipelines beating off the mountain springs at the foot of Rhodopes and joining near the Komatevo neighborhood. In II century Philippopol was already being supplied with 43 000 tons of water annually, which was being gathered on the foot of Taksim Hill.

The Western Aqueduct was the most impressive and nowadays it is restored and presented to the public.

Photo: Visit Plovdiv

Address: Komatevsko Shose Blvd, Plovdiv 4000

Public Transport: Buses #1, 7, 16, 20

More Info: <http://www.visitplovdiv.com/en/node/528>

### Bishop's Basilica



The Bishop's Basilica is and one of the biggest and most significant Early-Christian temples in the Balkans. It was constructed at the end of

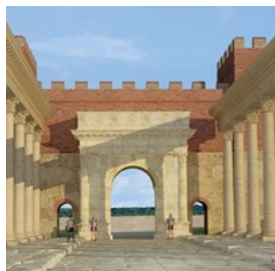
V - beginning of VI century on an area of 700 sq. m. and its ruins can be found nowadays in front of St. Louis Cathedral. The basilica fascinates with its mosaics covering the floor and walls, including original images of 'Heracles Knot', 'Spring of Life', as well as various geometrical patterns and bird images, which never resemble one another neither by species, nor by position. A project for its restoration and full exposure is running at the moment and aims to transform the site and the surrounding area into a cultural complex. The Bishop's Basilica will be a candidate for UNESCO World Heritage List after its complete restoration.

Photo: Visit Plovdiv

Address: 3, Knyaginya Maria Luiza Blvd.

Opening hours: Under reconstruction

### East Gate of Philippopol



The ruins of the East Gate can be seen nowadays at the Northeast end of the Old Town. It was of great significance to the Ancient city, as two

important roads were crossing it - the road to Byzantium, as well as the one to Danube.

At that particular place, a gate already existed in the 2nd century AD. Nearby, there was an arch, at about 18 meters northeast of the gate.

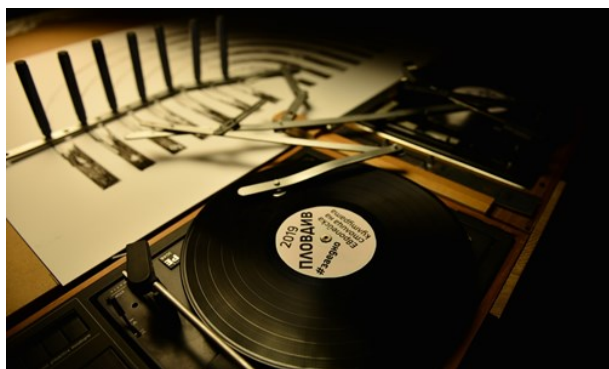
It is presumed that on both sides of the street there were military barracks, which formed an entire complex with the East Gate. They were built in the 4th century directly on the ruins of the fortifications.

Photo: Visit Plovdiv

Address: Alexander Malinov Sq.

More Info: <http://www.visitplovdiv.com/en/node/527>

### PLOVDIV - EUROPEAN CAPITAL OF CULTURE 2019



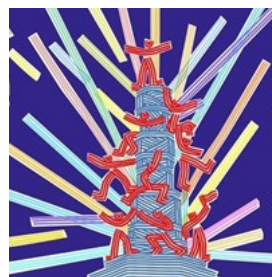
[www.plovdiv2019.eu](http://www.plovdiv2019.eu)

Plovdiv is the first Bulgarian city chosen to be European Capital of Culture. In 2019, twenty years after the city was a host of the Month of Culture in 1999, it will celebrate the most prestigious cultural initiative of the European Union.

European Capital of Culture is a unique project for Bulgaria which provides new opportunities for the development of the potential of the city and new international visibility and a perspective on Bulgarian culture as a whole. The programme of Plovdiv European Capital of Culture 2019 also includes activities and events in the South Central Region of Bulgaria. After four years of preparation, the programme is already a fact, with more than 300 projects and nearly 500 events covering not only the city but also the whole South Central Region as well as the cities finalists from the second round of the competition - Varna, Sofia and Veliko Tarnovo. Within the framework of the initiative, many traditional city events have gained new strength and have expanded, new festivals have emerged, and an extraordinary amount of new experience with cultural content and its management, will surely remain as a legacy of the initiative.

The beautiful Italian city of Matera, together with Plovdiv, has been chosen as the twin European Capital of Culture for 2019. The two cities are collaborating actively and have common projects and initiatives. For 2019 Matera also represents the region of Basilicata.

### We Are All Colors - 11-13/01/2019



The Ancient Theater

We Are All Colors 11 - 13 January 2019 Tobacco City, Kapana - Creative District, The Main Pedestrian Street, Tsar Boris III Obединител Blvd.,

Opening of Plovdiv European Capital of Culture 2019

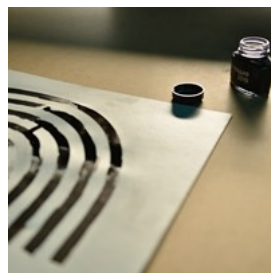
WE ARE MOST THRILLED TO INVITE YOU TO JOIN US IN CELEBRATING THE OPENING OF THE ECOC 2019 WITH THE MOST ATTRACTIVE AND MOMENTOUS HIGHLIGHT IN ITS PROGRAMME - THE 'WE ARE ALL COLORS' SHOW.

Over the course of an extended weekend a series of events will take place at various in- and outdoor spaces across the city. Its peak will be on Saturday, 12 January. The very heart of Plovdiv will welcome the ceremony. The show, combining music, light and dance, will give the key to the whole year ahead and to the basic concept of the European Capital of Culture project, in which the citizens themselves are not only audiences and actors, but also creators of events. More than 1500 participants from Bulgaria and abroad will recreate on the open stage a large and colorful metaphor of all the main themes of the programme 'Plovdiv 2019' and their relationships under the motto 'Together'.

The ECOC opening event is produced by the Plovdiv 2019 Foundation in partnership with international organizations, the major cultural institutions in Plovdiv, Plovdiv Municipality, artists and performers from Bulgaria and abroad. The concept of the event is created by the German artistic network phase7 performing.arts Berlin, artistic director Sven Sören Beyer. The opening weekend programme is made jointly with partner organizations from Plovdiv and Bulgaria.

Photo: [www.plovdiv2019.eu](http://www.plovdiv2019.eu)

## 2018 Selected Events



Opera Open 09.06 - 13.09  
International festival spectacularly staged at the Ancient theatre, one of the best preserved in the world. Hills of Rock 20.07

- 22.07

Iron Maiden, Judas Priest, Anthrax and many more will rock Plovdiv for the 2018 edition of the large-scale music festival.

Whispers /Murmures/ of Rhodope fairytales  
27.07 - 05.08

A fairy-tale performance - journey from France to Bulgaria.

#together for the Children 05.09

Annual event celebrating the selection of Plovdiv as European Capital of Culture, dedicated to children.

Week of Contemporary Art 10.09 - 30.09

Annual exhibition at the Ancient Bath presenting Bulgarian and international contemporary artists.

Mood for Food 14.09 - 16.09

United by the topic of food, this festival aims to provide an opportunity to enjoy wide variety of delicacies, participate in interactive events.

One Dance Week 21.09 - 14.10

Contemporary dance festival with diverse performances from all around the world.

Love Swing Dance Festival 27.09 - 30.09

Plovdiv is the new swing dance destination - fun days with expressive and dynamic events.

Plovdiv Jazz Fest 31.10 - 03.11

Some of the most influential contemporary musicians come to Plovdiv for jazz-filled autumn evenings.

Photo: [www.plovdiv2019.eu](http://www.plovdiv2019.eu)

Internet: [www.plovdiv2019.eu](http://www.plovdiv2019.eu)

## THE OLD TOWN



[www.visitplovdiv.com](http://www.visitplovdiv.com)

Ancient Plovdiv Architectural and Historical Reserve (The Old Town) has preserved enormous cultural heritage formed during 8 archaeological periods – Prehistoric, Thracian, Hellenic, Roman, Late-ancient, Medieval, National Revival, and Post-Liberation periods as well as modern culture.

Apart from the Roman sites, The Old Town fascinates with beautifully-ornamented Revival houses, most of which have been turned into museums and galleries. These buildings are characterized by unique national interpretation of the European baroque.

### Hisar Gate



The gate exists in its present-day appearance since XI century.

However, below the level of the street pavement there have been found foundations from the Roman period (probably from the 2nd century AD).

It served as a crypt for many years. The gate is part of the ensemble, which includes the outdoor quadrangular tower under the altar of St. Konstantin and Elena Church.

Photo: [www.visitplovdiv.com](http://www.visitplovdiv.com)

Address: Tsanko Lavrenov Str.

### Balabanov's House



The house was built in the early XIX century by the merchant Hadzhi Panayot Lampsha. It has had three owners, but nowadays it bears the

name of the last one - the tradesman Luka Balabanov. The house's dimensions are impressive with its 546 m<sup>2</sup> of built area. At present, a permanent exhibition of modern Bulgarian art takes place on the ground floor. The second floor, once having served for a guest hall, features the typical interior of the Revival period.

The house serves as a venue of various cultural events – exhibitions, literature premieres, chamber music concerts, theatre performances, meetings, etc. The International Chamber Music Festival - Balabanov's House Music Days takes place here annually.

Photo: [www.visitplovdiv.com](http://www.visitplovdiv.com)

Address: 57 Konstantin Stoilov Str., The Old Town, Plovdiv

Opening hours: Monday - Sunday: 9:00a.m. - 5:30p.m.

Phone: +359 32 627 082

Tickets: Individual: Adults - 5 BGN; Children and students - 2 BGN; Combined tickets for 5 sights: 15 BGN

Internet: <http://oldplovdiv.com/en/>

Email: [info@oldplovdiv.com](mailto:info@oldplovdiv.com)

More Info: <http://www.visitplovdiv.com/en/node/529>



### Hindilyan's House



Stepan Hindliyan's house is one of the few houses in Plovdiv representing the the symmetric design of a typical Revival house. The owner of the house

was a merchant and representative of one of the four wealthiest families of Armenian origin in Plovdiv.

The walls on the second floor of the house impress with paintings of landscapes from Constantinople, Venice, Alexandria, Stokholm and other cities, all painted by memory. A mirror image of the house can be seen above the door of the storage room in the yard, which serves both as decoration and a blueprint of the house. Many of the cultural events take place in the house every year.

Photo: [www.visitplovdiv.com](http://www.visitplovdiv.com)

Address: 4 Artin Gidikov Sr., Plovdiv 4000

Opening hours: Monday - Sunday: 9:00 a.m. - 5:30 p.m.

Phone: +359 32 628 998

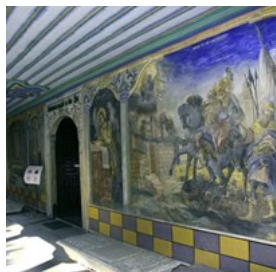
Tickets: Individual: Adults - 5 BGN; Children and students - 2 BGN; Combined tickets for 5 sights: 15 BGN

Internet: [www.oldplovdiv.com/en/sights/4](http://www.oldplovdiv.com/en/sights/4)

Email: [info@oldplovdiv.com](mailto:info@oldplovdiv.com)

More Info: <http://www.visitplovdiv.com/en/node/530>

### St. St. Konstantin and Elena Church



The church St. St. Konstantin and Elena is one of the oldest Christian temples Plovdiv, located right on the wall of the Acropolis in the Old

Town.

In 304, at the place where the church is located today, 38 martyrs of Plovdiv became victims of persecutions against Christians. According to archaeological researches, the very first Christian temple in the city was built in honor of

two the beheaded holy martyrs – the Thracians Severin and Memnos.

In the '60s of XIX century, a beautiful 13-meter-high bell tower was built, with five floors and two bells. Next to the church, there used to be a parish school, which nowadays operates as an Icon gallery.

Photo: [www.visitplovdiv.com](http://www.visitplovdiv.com)

Address: Hisar Kapia Sq., Plovdiv 4000

Opening hours: Monday - Sunday: 8:00 a.m. - 6:00 p.m.

Services: Friday and Sunday: 8 a.m.; Sunday - 5:00 p.m.

Phone: +359 32 624 573

More Info: <http://www.visitplovdiv.com/en/node/576>

### Dr. Stoyan Chomakov's House - Exposition of Zlatyu Boyadzhiev



The doctor and public official from the National Revival period Dr. Stoyan Chomakov was one of the most active fighters for autonomous Bulgarian

Church before the Liberation from Ottoman domination in 1878.

The Chomakov's House, built in 1862-1865, is his 'testament' to the future generations of Plovdiv.

In terms of its architecture, the Neoclassical style popular at that time, was abandoned. Since 1984 this house has hosted the biggest collection of 72 paintings by the famous Bulgarian artist Zlatyu Boyadzhiev (1903-1976), representing the two periods of his professional life.

Photo: [www.visitplovdiv.com](http://www.visitplovdiv.com)

Address: 18 Saborna Str., Plovdiv

Opening hours: Monday - Sunday: 9:00 a.m. - 5:30 p.m.

Phone: +359 32 635 308

Tickets: Individual: Adults - 5 BGN; Children and students - 2 BGN; Combined tickets for 5 sights: 15 BGN

Internet: <http://oldplovdiv.com/sights/10>

Email: [info@oldplovdiv.com](mailto:info@oldplovdiv.com)

More Info: <http://www.visitplovdiv.com/en/node/532>

### Street of Crafts



The Street of Crafts is a crafts market where one can explore typical for the Revival period workshops, have a tea or coffee, purchase herbs

from a traditional drug-store, observe works of skillful craftsmen created in front of their eyes. There can be observed workshops in: ceramics, pottery, bakery, felting, glass engraving and painting, weaving and blacksmithery. Every visitor is able to see, or make by themselves, and purchase a souvenir from Plovdiv.

Photo: [www.visitplovdiv.com](http://www.visitplovdiv.com)

Address: 1-3, Stramna Str., Old Town

Opening hours: Tuesday - Sunday: 10:30 a.m. - 7:00 p.m.

Monday: Closed

Phone: +359 879 839577, +3598 89361451

### Nedkovich's House



The house of Nikola Nedkovich was built in 1863 and features the most exuberant exterior decoration in the Old Town. Nowadays, it is one

of the very few houses that have preserved original artefacts belonging to the primary owners.

The ground floor of the house impresses with its unique ceiling carvings which have been preserved in their original appearance without any restoration work. The upper floor is notable for the distinctive style of its decoration. Here the spirit of Western Europe endures a strong presence through a superb collection of period furniture.

Nedkovich House is of the venues for hosting creative activities and initiatives in the Old

Town.

Photo: [www.visitplovdiv.com](http://www.visitplovdiv.com)

Address: 3 Tsanko Lavrenov Str., Plovdiv

Opening hours: Monday - Friday: 9:00 a.m. - 5:30 p.m.

Phone: +359 32 626 216

Tickets: Individual: Adults - 5 BGN; Children and students - 2 BGN; Combined tickets for 5 sights: 15 BGN

Internet: [www.oldplovdiv.com/en/sights/6](http://www.oldplovdiv.com/en/sights/6)

Email: [info@oldplovdiv.com](mailto:info@oldplovdiv.com)

More Info: <http://www.visitplovdiv.com/en/node/531>

### Museum of Pharmacy



The house was built in 1872 by Dr. Sotir Antoniadi, one of the first people with medical degree in Plovdiv.

Nowadays, it features the

Old pharmacy shop Hippocrates and the Museum of Pharmacy, which are unique for Bulgaria.

Here you can have insight of the way medicine and pharmacy were practised during the Bulgarian Revival period, up to the beginning of the 20th century - a period when all the medications and pills used to be made of natural ingredients.

A lot of tools and medical equipment, manufactured mainly in Vienna and Berlin, are displayed inside.

The original book with recipes by the healer St. John of Rila still keeps the memory of the century-old art of making remedies.

Photo: [www.visitplovdiv.com](http://www.visitplovdiv.com)

Address: 16 Saborna Str., Plovdiv

Opening hours: Monday - Friday: 9:00 a.m. - 5:30 p.m.

Phone: + 359 32 624 594

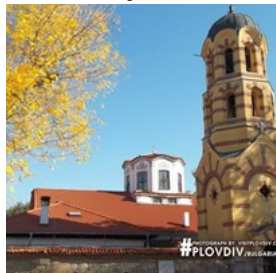
Tickets: Individual: Adults - 5 BGN; Children and students - 2 BGN; Combined tickets for 5 sights: 15 BGN

Internet: <http://oldplovdiv.com/sights/5>

Email: [info@oldplovdiv.com](mailto:info@oldplovdiv.com)

More Info: <http://www.visitplovdiv.com/en/node/533>

### St. Nedelya Church



The first temple to Saint Nedelya at that venue was built in the early XVII century and is one of the few churches built on this area. The majority of the icons were painted by Dimitar Hristov Zograph and his son Zafir, later known by the pseudonym Stanislav Dospevski.

Frescoes from 1871 are preserved in the temple. They can be seen on the eastern wall of the altar and in medallions, located high between the arches of the columns. On the west wall under the balcony, on both sides of the entrance, there were found two mural panels depicting St. George and St. Dimitar /Demetrius/ in the typical iconography of horsemen warriors.

Photo: [www.visitplovdiv.com](http://www.visitplovdiv.com)

Address: 40 P. R. Slaveykov Str., Plovdiv 4000

Opening hours: Monday - Sunday: 8:00 a.m. - 6:00 p.m.

Services: Every day at 8:00 a.m. and 5:00 p.m.

Phone: +359 32 623 270

More Info: <http://www.visitplovdiv.com/en/node/578>

### Veren Stambolyan's House - Exposition Dimitar Kirov



Veren Stambolyan's house, built in the second half of XIX century, is a large two-storey symmetrical building, located on the Eastern

slope of Dzhambaz Tepe. Years ago, it used to be a creative center of Union of Bulgarian Artists and Union of Plovdiv Artists.

Since May 2010, a permanent exhibition dedicated to the work of the famous Plovdiv's artist Dimitar Kirov /1935-2008/ has been arranged in the house. Kirov belonged to the generation of Plovdiv artists, who modernized

the image of Bulgarian art in the 1960s.

Photo: [www.visitplovdiv.com](http://www.visitplovdiv.com)

Address: 15 Kiril Nektariev Str., Plovdiv 4000

Opening hours: Monday - Sunday: 9:00 a.m. - 5:30 p.m..

Phone: +359 32 635 381

Tickets: Individual: Adults - 5 BGN; Children and students - 2 BGN; Combined tickets for 5 sights: 15 BGN

Internet: <http://oldplovdiv.com/sights/9>

Email: [info@oldplovdiv.com](mailto:info@oldplovdiv.com)

More Info: <http://www.visitplovdiv.com/en/node/852>

### Klianti's House



The construction of this residential building started in the middle of the 18th c. It is an asymmetrical two-storey house, which has

undergone several refurbishments in the 19th c., the most significant being that from 1817. Up to the present

time 2/3 of its original substance have been preserved, for over time it had changed several owners.

Of all the Revival period houses in Plovdiv, Klianti House is the oldest and features enthralling interior decoration and unique architecture. The covered yard on the ground level is impressive. The first floor today consists of three rooms and of a spacious hayet with many windows. At the level of the hayet, next to it, a median storage room is built with a height of 1.60 m. It is named himala (meaning "low" in Greek). The ornamentation and decoration on the walls in these two rooms is extremely rich and is matched with preserved wooden elements. The mural paintings are polychrome and include plant ornamentation, bouquets and vases with flowers. The wooden ceilings are adorned with different decorative ornaments, the enclosed wooden recesses (musandras) are painted with bouquets of roses and the doors are richly



decorated. On both sides of the alafraŋga in one of the rooms, unique landscapes from Vienna and Constantinople and the year 1817 were treated and restored.

Photo: [www.visitplovdiv.com](http://www.visitplovdiv.com)

Address: 3 A Todor Samodumov Str., Plovdiv 4000

Opening hours: April - October: Monday - Sunday: 9a.m. - 6p.m.; November - March: Monday - Sunday: 9:00 a.m. - 5:30 p.m.

Phone: + 359 (0) 32 660 160

Tickets: Individual: Adults - 10 BGN; Children and students - 4 BGN;

More Info: <http://www.visitplovdiv.com/en/node/682>

### Chalakov's House



This is one of the many houses in the Old Town that used to belong to the famous house of Chalakovtzi during the Revival period. Valko and

Stoyan Chalakovi were born in Koprivshitsa, but their left their mark here, in Plovdiv. The churches St. Bogoroditsa and St. Nikolay, which are just next to the house, were built mostly on their donations, as well as the school 'St. St. Kiril and Metodiy'.

The bigger brother - Valko, is donator of the Rila Monastery, and was responsible for the schools, churches and hospitals in Plovdiv.

The house of Chalakovtzi was restored in 2012 by Association 'Trakia' with the help of volunteers and artists from National School 'Tsanko Lavrenov'. The furniture which can be seen in the house is entirely from the Revival period.

Photo: [www.visitplovdiv.com](http://www.visitplovdiv.com)

Address: Mitropolit Paisiy Str., Old Town

Opening hours: 9:00 a.m. - 5:00 p.m.

### St. Virgin Mary Church



The first records of a church, which was originally built in honour of Virgin Mary, date back to IX - X century. In 1844 - 45, craftsmen from

Bratizgovo constructed an entirely church - a three-nave pseudo-basilica with impressive dimensions. After Stoyan Chalakov took the position of churchwarden, the church was entirely reconstructed.

The iconostasis was made by the Debar woodcarvers Andon Stanishev and Dimitar Stanishev in the Empire style and Nikola Odrinchianin created the icons. In 1875 Stanislav Dospevski painted the royal icon of Saint Mary with the Divine Infant by the iconostasis. The church was fully restored in 2000.

Photo: [www.visitplovdiv.com](http://www.visitplovdiv.com)

Address: 2 Saborna Str., Plovdiv 4000

Opening hours: Monday - Sunday: 7:00 a.m. - 7:00 p.m.

Services: Every day at 8:30 a.m. and 5:00 p.m.

Phone: +359 32 623 265

More Info: <http://www.visitplovdiv.com/en/node/580>

### St. Dimitar Church



At this place in the beginning of XIX century there was a dilapidated late medieval church, dedicated to St. Dimitar of Solun the

Thaumaturgus. Funds for the continuation of the construction were donated by wealthy Plovdiv citizens Ivan Politoglu, Valko and Stoyan Teodorovich Chalakov, Stoyan Kurtovic Chalakov, Iskro Kesyakov, Todor Valkovich, and others. Anton Kamizopoulos, merchant of Greek origin in Moscow, born in Plovdiv, donated valuable church-plates for the ordinance of the

altar: Four Gospel, decorated with fittings, censers and vestments for the priests. Probably the temple was built by the famous master from Bratsigovo Stoyu Ivanov.

Most impressive is the marble iconostasis, the only monument of its kind in our Revival art. It was created in 1860-1869, by Adrianople and local masons, led by Greek artist A. Calumen. The funds for the expensive and impressive iconostasis were donated by the prominent resident of the parish, Ivan G. Politoglu.

The yard of the St. Dimitar temple is surrounded by high stone walls. In the western part there is the small chapel-holy spring, dedicated to the martyrs St. Kirik and Julita. In the north side of the narthex is the belfry, built in the '80s of XIX century by architect Joseph Shniter's design. The single storey building of the sexton's house fits snugly to the southern fence wall. Next to the chapel, built on the high retaining wall, is the old priest's home.

Photo: [www.visitplovdiv.com](http://www.visitplovdiv.com)

Address: Todor Samodumov Str., Old Town

Phone: +359 32 62 20 36

### St. Nikolay Church



Sveti Nikolay (St. Nicholas) Chapel is located on top of Taksim Tepe in Plovdiv, about 70-80 meters west of The Assumption church. It is

assumed that it was built during the reign of Bulgarian ruler Ivan Alexander around 1355 and was Saint Nikolay even then.

The current building of the chapel dates back to 1835, when it was built with funds donated by Valko Todorov Chalakov from Plovdiv, who lived very near the temple. St. Nicholas Chapel is a small, single nave basilica, with one apse and a size of 17.5m /9.80m/6m. It is built of unshaped

stone. Only the east altar wall and the apse are from carved stone blocks.

The iconostasis of the chapel is from the old demolished church and that is why it is the oldest iconostasis in Plovdiv. It dates back to 1733 and has an interesting and original old carving. Presumably, it was made by local craftsmen, who were influenced by the carving in the great church of Bachkovo Monastery. The church icons were painted by Renaissance painters Zahari Zograf and Dimitar Zograf. The royal icons of Jesus Christ, Virgin Mary, St. John the Baptist and St. Nicholas are the work of Zahari Zograf. There is a relatively small icon of St. Nicholas on the iconostasis, whose author was Hristo Dimitrov, Zahari Zograf's father.

Photo: [www.visitplovdiv.com](http://www.visitplovdiv.com)

Address: Todor Samodumov Str.

### Craft Center Bakalova's House



The Early-Revival ensemble of houses of Evdokia Bakalova and Kasandra Bayatova is situated in the northernmost part of Dr.

Chomakov street and shapes the architectural framework of Nebet tepe hill.

In 2012, a crafts center was arranged in the house by Plovdiv Regional Chamber of Crafts. In the studios, visitors can watch the process of making art fabrics, jewelry beads, art ceramics, products from belenitsa /corn leaves/ and embroidery with national patterns.

The center is equipped a showroom for handicrafts.

Photo: [www.visitplovdiv.com](http://www.visitplovdiv.com)

Address: 9 Dr. Stoyan Chomakov Str.

Opening hours: Monday - Sunday: 10:00 a.m.

Tickets: Free entry

### Armenian Apostolic Church



Armenian Apostolic Church Surp Kevork Surp Kevork Church was originally an Eastern Orthodox Church, dedicated to St. George

the Victorious. This is the only church with side compartments besides the central nave: one for women and another for men. Next to the church there was built a chapel. After several reconstructions the church got its present outlook.

In front of the church and around it there is a large yard that surrounds the church complex in a rectangular shape. Part of it serves as a school yard from the time it was built in the first three decades of XIX century. The yard on the west side rests on a massive, high stone wall.

In the past, the yard was intended for graveyard of prominent and wealthy Armenians from the community, as well as priests and prelates, who had died here. In the churchyard, on the empty spot between the church and the erstwhile Surp Hach church, there is a preserved marble sarcophagus with a rectangular shape. The church tower, probably constructed in the second half of XIX century, was semi-destroyed during the earthquake in 1928. The new tower was built on the same spot in the corner.

In the courtyard, in front of Tadey and Parteniy chapel to the west side, near the west staircase, still stands a well, made to the order of a noble Armenian, in memory of his deceased son. The well was built on May 5, 1877. In the northern part of the churchyard is the former building of St. Vartanants - Varavaryan School, with an inscription in Armenian on elliptical marble plaque and the year of its construction in 1894.

Photo: [www.visitplovdiv.com](http://www.visitplovdiv.com)

Address: 2 Turist Sr., Old Town

Opening hours: 9:00 a.m. – 17:00 p.m.

Phone: +359 32 632 804

### Metropolitan Church of St. Martyr Marina



After the Edict of Milan in 313 AD in the ancient city of Plovdiv were built an episcopal basilica and residence of the spiritual head of the diocese. The

temple, existing in the time after this period, was built probably in V century and existed until the end of VI century when it was destroyed by Slavic invasions. According to studies of these researchers the temple was dedicated to St. Paul.

In the middle of XVIII century the church was burned down again. Among the first donors in its recovery were Hadji Andon, Konstantin Mavrudioglu, Costa Atanasov and priest Yani. It was finally completed in 1783 during the time of the Plovdiv Metropolitan Kiril. In 1828 the construction of a new iconostasis for the temple, a pulpit and a canopy for the Holy See started. The woodcarvers who made this were representatives of the Debar carving school. The dome is with polyhedral shape. In the western part of the temple there is an open colonnade – narthex which was inscribed with biblical scenes by painter Nikita Odrinchanin in 1858. The total number of scenes are 29, 24 of which are from the Old Testament.

When the construction of the new, bigger temple started, the earlier carved iconostasis was preserved. On the left of the royal doors of the iconostasis was an icon of Virgin Mary with the Divine Infant, and on the right – an icon of Christ the Savior, both painted by Stanislav Dospevski in 1868. Two old places for church singers have octagonal shape and are decorated with



encrusted bones and wooden plates.

Nowadays, St. Marina is the temple with the biggest number of bells. The church also stores a fraction of the holy relics of Saint Martyr Marina as a sanctuary.

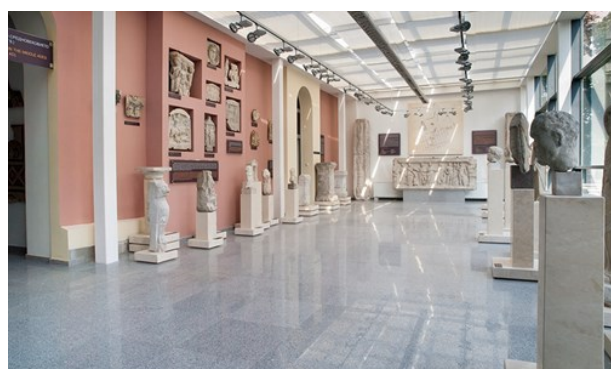
Photo: [www.visitplovdiv.com](http://www.visitplovdiv.com)

Address: 7, Dr. Georgi Valkovich Str., Plovdiv

Opening hours: 7:00 a.m. - 8:00 p.m.

Phone: +359 32 62 32 76

## MUSEUMS & GALLERIES



[www.visitplovdiv.com](http://www.visitplovdiv.com)

The abundance of art galleries and museums makes Plovdiv a must-visit city, famous as the city of artists. There are over 300,000 immovable artefacts in the city's museums from all of the 8 archaeological periods of its history.

Temporary expositions also take place to display private collections, or expositions of paintings by young artists.

### Panagyurishte Golden Treasure - Regional Archaeological Museum



The treasure consists of nine golden vessels with a total weight of 6.100 kg and was discovered in 1949 near Panagyurishte.

The gold beverage set includes a phiale (a dish) and eight rhytons (cups) in the form of different zoomorphic and

anthropomorphic figures. The treasure used to be in possession of an unknown Thracian ruler of the Odryssian tribe who reigned at the end of IV c. and the beginning of III c. B.C.

Photo: [@archaeologicalmuseum](https://www.instagram.com/archaeologicalmuseum)

Address: 1, Saedinenie Sq., Plovdiv 4000

Opening hours: Tuesday - Saturday: 9:30 a.m. - 5:00 p.m.

Tickets: 5 BGN

Internet: [www.archaeologicalmuseumplovdiv.org](http://www.archaeologicalmuseumplovdiv.org)

Email: [ram.plovdiv@gmail.com](mailto:ram.plovdiv@gmail.com)

### Regional Archaeological Museum



The Regional Archaeological Museum is one of the oldest cultural institutions in Bulgaria, founded in 1882. Seven temporary

collections are exposed in the museum:

Prehistoric Art, The Panagyurishte Gold Treasure (Thracian Art), Ancient Greek Art, Roman Art, Medieval Art, Bulgarian Revival Art and a Numismatic Collection.

The Antiquity Department of the Museum displays more than 5,000 artefacts illustrating the Thracian-Roman Arts.

Diverse collection of over 60,000 coins dated VI c. B. C. - XX c. A. D. can be seen in the museum's Numismatic Department.

Photo: [www.visitplovdiv.com](http://www.visitplovdiv.com)

Address: 1 Saedinenie Square, Plovdiv

Opening hours: Tuesday - Saturday: 9:30 a.m. - 5:00 p.m.

Phone: +359 32 624 339

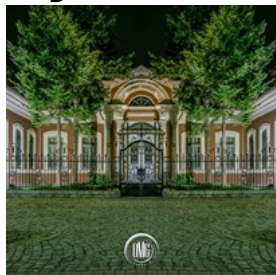
Tickets: 5 BGN

Internet: [www.archaeologicalmuseumplovdiv.org](http://www.archaeologicalmuseumplovdiv.org)

Email: [ram.plovdiv@gmail.com](mailto:ram.plovdiv@gmail.com)

More Info: <http://www.visitplovdiv.com/en/node/840>

### Regional Historical Museum - Exposition of Bulgarian Unification 1885



The exposition of Unification of Bulgaria - 1885 has been arranged in the building of the Province assembly (the Parliament) of Eastern

Rumelia, designed by the architect Pierre Montani.

The museum exposition was opened in 1985 on the occasion of the 100th anniversary of the Unification of Principality of Bulgaria and East Rumelia. It represents the period beginning with the Treaty of Berlin (1878), till the Serbo-Bulgarian War of 1885. Original items (personal belongings, award tokens, cold steel and firearms), photos and documents belonging to the participants in the Unification and the Serbo-Bulgarian War are displayed in five exhibition halls on area of 900 sq.m.

Photo: [www.visitplovdiv.com](http://www.visitplovdiv.com)

Address: 1 Saedinenie Sq., Plovdiv 4000

Opening hours: Monday - Friday: 9:00 a.m. - 5:00 p.m.

Phone: +359 32 629 409

Tickets: Adults: 3 BGN; Students: 1 BGN; Children up to 7 years of age: Free admission

Internet: [www.historymuseumplovdiv.org](http://www.historymuseumplovdiv.org)

Email: [hm\\_plovdiv@mail.bg](mailto:hm_plovdiv@mail.bg)

More Info: <http://www.visitplovdiv.com/en/node/820>

### Regional Historical Museum - Bulgarian National Revival Exposition



The Bulgarian National Revival Exposition is displayed in the House of Dimitar Georgiadi in the Old Town, which is a cultural monument of

national importance. The house was built in 1848 on commission of the wealthy Bulgarian craftsman Georgi Kendindenoglou and

represents the so-called Symmetric Revival house.

The exposition traces back the history of Plovdiv in the period XV-XIX century on the area of ten halls and two salons of the house. The halls on the first floor display the ethnic diversity and economic development of Plovdiv during the Ottoman rule. On the second and third floor there is exposition representing the struggle for independent church and education.

Photo: [www.visitplovdiv.com](http://www.visitplovdiv.com)

Address: 1 Tsanko Lavrenov Str., Plovdiv 4000

Opening hours: Monday - Saturday: 9:00 a.m. - 5:00 p.m.

Phone: +359 32 62 33 78

Tickets: Adults: 3 BGN; Students: 1 BGN; Children up to 7 years of age: Free admission

Internet: [www.historymuseumplovdiv.org/](http://www.historymuseumplovdiv.org/)

Email: [hm\\_plovdiv@mail.bg](mailto:hm_plovdiv@mail.bg)

More Info: <http://www.visitplovdiv.com/en/node/850>

### Regional Historical Museum - Exposition of Book Publishing in Bulgaria in 19th-20th century



The exposition of the Bulgarian book publishing took place in the house of the founder of the modern Bulgarian book publishing Hristo

Gruev Danov in 1975.

The house was erected in the mid-19th century and is a typical example of a symmetric house from the Revival period. The transition from the ceiling to walls is painted with alternating 12 medallions, four of them depicting Johann Gutenberg.

The section of the exposition holds more than 5000 volumes of books, unique publications, geographic maps and school pictures and aids, items of everyday life, personal belongings and correspondence of Hristo Danov and his publisher's house.

Photo: [www.visitplovdiv.com](http://www.visitplovdiv.com)

Address: 2 Mitropolit Paisiy Str., The Old Town, Plovdiv 4000

Opening hours: Monday - Friday: 9:00 a.m. - 5:00 p.m.

Phone: +359 32 62 94 05

Tickets: Adults: 3 BGN; Students: 1 BGN; Children up to 7 years of age: Free admission

Internet: [www.historymuseumplovdiv.org/](http://www.historymuseumplovdiv.org/)

Email: [hm\\_plovdiv@mail.bg](mailto:hm_plovdiv@mail.bg)

More Info: <http://www.visitplovdiv.com/en/node/848>

### **Museum Center of Modern History - Exposition 'The Soul of Japanese Doll'**



The building was originally an officers' club, founded in 1895. In 1951 the building was turned into a Museum of the History of Capitalism,

Working Class Movement and Socialist Construction.

Nowadays it accommodates the Museum Centre of Modern History. The permanent exposition of the museum - The Soul of the Japanese Doll, represents the history of the Japanese traditional dolls.

In the large, fully equipped hall there are also arranged art and photographic exhibitions, presentations, seminars and other public events.

Photo: [www.visitplovdiv.com](http://www.visitplovdiv.com)

Address: 14 Angel Bukoreshtliev Str.

Opening hours: Monday - Friday: 9:00 a.m. - 5:00 p.m.

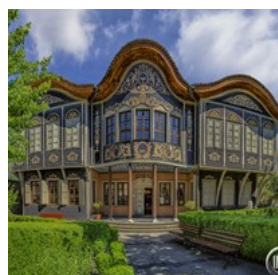
Phone: +359 32 62 88 86; +359 32 63 45 12

Internet: [www.historymuseumplovdiv.org/](http://www.historymuseumplovdiv.org/)

Email: [hm\\_plovdiv@mail.bg](mailto:hm_plovdiv@mail.bg)

More Info: <http://www.visitplovdiv.com/en/node/846>

### **Regional Ethnographic Museum**



Regional Ethnographic museum is the second largest specialized museum of this type in Bulgaria. The museum was established in 1917

and since 1938 it has been located in Kuyumdzhieva house - a cultural monument of national significance. The permanent exposition consists of more than 40, 000 items and presents Bulgarian crafts, agriculture, clothing, furniture, musical instruments, as well as a photo exhibition.

Photo: [www.visitplovdiv.com](http://www.visitplovdiv.com)

Address: 2 Dr. Stoyan Chomakov Str., Plovdiv

Opening hours: Tuesday - Sunday: 9:00 a.m. - 5:00 p.m.

Phone: +359 32 625 654

Tickets: Individual: Adults - 6 BGN; Children and students - 2 BGN;

Internet: [www.ethnograph.info](http://www.ethnograph.info)

Email: [ethnograph@abv.bg](mailto:ethnograph@abv.bg)

More Info: <http://www.visitplovdiv.com/en/node/844>

### **Regional Natural Science Museum**



The museum displays a variety of expositions, including those of Minerals, Fishes, Mammals, Amphibians and Reptiles,

Invertebrates, Birds and Plants.

The biggest and the most diversified aquarium in the whole country with over 216 kinds of fish and octopi and a terrarium with living animal species can be explored.

After recent reconstructions, the museum boasts with the first Digital Planetarium in Bulgaria with a capacity of 50 seats, which carries the visitors into the atmosphere of nature and the outer space.

On September 7, 2017, a new tropic hall will be opened. There will be observed 15 living species of butterflies, as well as over 40 exotic plants.

Photo: [www.visitplovdiv.com](http://www.visitplovdiv.com)

Address: 34 Hristo G. Danov Street, Plovdiv 4000

Opening hours: Monday - Friday: 9:00 a.m. - 5:00 p.m.;



Saturday - Sunday: 09:00 a.m. - 5:00 p.m. Hours of the projections in the Digital Planetarium: 09:00 a.m., 10:30 a.m., 12:00, 1:30 p.m., 3:00 p.m.

Phone: +359 32 633096; Reservations for groups: +359 32 633096

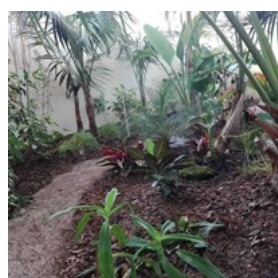
Tickets: 4,00 BGN; Students - 2,00 BGN; Tickets for the projections in the Digital Planetarium: Single: adults - 10,00 BGN; Students - 7,00 BGN

Internet: <http://rnhm.org/en/home>

Email: [pnm\\_plovdiv@abv.bg](mailto:pnm_plovdiv@abv.bg)

More Info: <http://www.visitplovdiv.com/en/node/842>

### Regional Natural Science Museum: Tropical Hall



The Tropical Hall of Regional Natural History Museum presents over 15 living species of tropical butterflies can be observed in the

exposition hall decorated with over 40 exotic plants.

The Tropical hall can be explored alongside the other expositions of the museum, such as the Aquarium, Terrarium and the Digital planetarium.

Photo: [www.visitplovdiv.com](http://www.visitplovdiv.com)

Address: 34, Hristo G. Danov Str., Plovdiv 4000

Opening hours: Monday - Friday: 9:00 a.m. - 5:00 p.m.;

Saturday - Sunday: 9:00 a.m. - 5:00 p.m.

Phone: +359 32 633 096

Tickets: Individual: 5 BGN, Students: 3 BGN, Children under the age of 7: 1 BGN

Internet: [www.rnhm.org](http://www.rnhm.org)

Email: [pnm\\_plovdiv@abv.bg](mailto:pnm_plovdiv@abv.bg)

### City Art Gallery - Permanent Exposition CLOSED



The exposition is housed in the building of the Young Girls' College, designed and built in 1881, under the guidance of the architect Joseph

Schnitter.

The collection presents the most diverse artistic works from the early development of Bulgarian art, with over 200 original pieces of artwork.

It is arranged chronologically on two floors.

The works of our great Revival artists before and in the first years after the Liberation are displayed.

At present the City Art Gallery of Plovdiv holds 7210 works, of which 2310 - paintings, 2549 - graphic works, 545 - sculptures and applied arts works, 574 - icons and 1234 - works of Mexican art.

Photo: [www.visitplovdiv.com](http://www.visitplovdiv.com)

Address: 14 A Saborna Str., Plovdiv 4000

Opening hours: The site is currently closed due to repair works

Phone: +359 32 63 53 22

Tickets: Individual: 4 BGN; Combined ticket for all the expositions: 8 BGN;

Internet: [www.galleryplovdiv.com/en/](http://www.galleryplovdiv.com/en/)

Email: [ghgpl1952@gmail.com](mailto:ghgpl1952@gmail.com)

More Info: <http://www.visitplovdiv.com/en/node/838>

### City Art Gallery - Halls for Temporary Expositions



The exhibition spaces are housed in a building with a typical urban architecture from the beginning of the 20th century. In the halls on

both floors there are presented temporary exhibitions relating to the anniversaries of outstanding Bulgarian artists, as well as the historical events, as well as the cultural life of Bulgaria. Exhibitions by foreign artists, such as one's by children, are also presented here.

Photo: [www.visitplovdiv.com](http://www.visitplovdiv.com)

Address: 15 Knyaz Alexander Batemburg Str., Plovdiv 4000

Opening hours: Monday - Friday: 09:00 a.m. - 5:30 p.m.;

Saturday - Sunday: 10:00 a.m. - 5:30 p.m.

Phone: +359 32 624221

Tickets: Individual: 4 BGN; Combined ticket for all the expositions: 8 BGN;

Internet: [www.galleryplovdiv.com/en](http://www.galleryplovdiv.com/en)

Email: [ghgpl1952@gmail.com](mailto:ghgpl1952@gmail.com)

More Info: <http://www.visitplovdiv.com/en/node/832>

### Icon Gallery



On display are the best examples of icons wealth funds from the gallery's collection of Plovdiv Bishopric, representing the Eastern Christian art

from the Plovdiv region and throughout South Bulgaria by the end of the fifteenth century to the late nineteenth century.

Extremely valuable are eight icons from Nessebar - works of masters from the Post-Byzantine Cretan School. Seventeenth century is also presented with a number of icons from Rakitovo. The path of Bulgarian pilgrims who visited the holy places like Jerusalem, Sinai Monastery St. Catherine and the Holy Mountain Athos can be followed by the Eruslimii and the church plate presented.

Thematic exhibitions are temporarily displayed, presenting various aspects of symbolic of the Christian art.

Photo: [www.visitplovdiv.com](http://www.visitplovdiv.com)

Address: 22 Saborna Str., The Old Town, Plovdiv 4000

Opening hours: Monday - Friday: 09:00 a.m. - 5:30 p.m.;

Saturday - Sunday: 10:00 a.m. - 5:30 p.m.

Phone: +359 32 626086

Tickets: Individual: 4 BGN; Combined ticket for all the expositions: 8 BGN;

Internet: [www.galleryplovdiv.com/en](http://www.galleryplovdiv.com/en)

Email: [ghgpl1952@gmail.com](mailto:ghgpl1952@gmail.com)

More Info: <http://www.visitplovdiv.com/en/node/836>

### City Art Gallery: Exposition of Georgi Bozhilov - Slona



The Skobeleva house is a Revival house in Plovdiv, built in 1860 by Kostadin Kaftandzhiyata, a prominent Bulgarian from Stara Zagora. After the

liberation the mother of gen. Mihail Skobelev, Olga Skobeleva (1823-1880), lived here until her death. She is known for her charity for helping the Bulgarian victims of the Turkish rout in southern Bulgaria during the April Uprising and the Liberation War. At her place of death near Tsarigradsko shose Blvd. stands a memorial park. In 2003 in the Skobeleva house is arranged a constant exposition, devoted to the work of the famous Plovdiv artist Georgi Bozhilov - The Elephant (1935- 2001). On the northern side there could be seen a picturesque panel and a mosaic of another famous painter - Dimitar Kirov, which he dedicates to his friend. The turbot of the house from the side of Saborna Str. is decorated with memorial mural, a painting and a mosaic, designed by Dimitar Kirov, engraved in Georgi Bozhilov's memory.

Photo: [www.visitplovdiv.com](http://www.visitplovdiv.com)

Address: 1 Knyaz Tseretelev, Old Town

Opening hours: Monday - Friday: 09:00 a.m. - 5:30 p.m.;

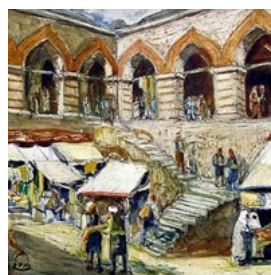
Saturday - Sunday: 10:00 a.m. - 5:30 p.m.

Phone: +359 32 633 434

Tickets: Individual: 4 BGN; Children and students - 2 BGN;

Combined tickets for all expositions: 8 BGN

### City Art Gallery - Exposition of Tsanko Lavrenov



In his works Tsanko Lavrenov demonstrates a deep sincere devotion to the monuments of the Bulgarian Renaissance. His compositions with

themes from Plovdiv and Veliko Tarnovo, with themes from old monasteries of the Holy Mountain of Athos, Rila and Rhodopes, indicate his desire to connect with the natural architectural forms in the name of their respectable historicity.

Although almost all the characteristics of his art are typical for modernism and are not unknown to European art of that time, put together in his decorative graphic illustrations, they present a different approach to creativity.

Photo: [www.visitplovdiv.com](http://www.visitplovdiv.com)

Address: 11 Artin Gidikov Str., The Old Town, 4000 Plovdiv

Opening hours: Monday - Friday: 09:00 a.m. - 5:30 p.m.

Phone: +359 32 62 87 45

Tickets: Individual: 4 BGN; Combined ticket for all the expositions: 8 BGN;

Internet: [www.galleryplovdiv.com/en](http://www.galleryplovdiv.com/en)

Email: [ghgpl1952@gmail.com](mailto:ghgpl1952@gmail.com)

More Info: <http://www.visitplovdiv.com/en/node/834>

### City Art Gallery - Exposition of Mexican Art



Along with decorative monumental painting, Mexican graphic arts cause significant public interest with its thematic engagement, professional

skill and advanced plastic solutions with direct impact on the audience.

Since 1981 such visually diverse graphic collections have been presented in our country.

The exposition consists of 1,300 drawings, donated to Bulgaria by the National Fund 13 Centuries Bulgaria. This is the first fully equipped art gallery outside of Mexico and a complete overview of modern Mexican graphic. Subsequently received copies of pre-Columbian pottery and replicas of musical instruments, artwork and crafts are also on display.

Photo: [www.visitplovdiv.com](http://www.visitplovdiv.com)

Address: 11 Artin Gidikov Str., The Old Town, 4000 Plovdiv

Opening hours: Monday - Friday: 09:00 a.m. - 5:30 p.m.

Phone: +359 32 62 87 45

Tickets: Individual: 4 BGN; Combined ticket for all the expositions: 8 BGN;

Internet: [www.galleryplovdiv.com/en](http://www.galleryplovdiv.com/en)

Email: [ghgpl1952@gmail.com](mailto:ghgpl1952@gmail.com)

More Info: <http://www.visitplovdiv.com/en/node/834>

### City Art Gallery - Exposition of Encho Pironkov



Encho Pironkov's style is typified by strong expressive gesture with a sense of spontaneity and naturalness. It fragments pictorial space and fits in

it figures holding ceremonial position. Dealing with these compositions is dramatically enhanced by the peculiar mystique of the message and the typical strong opposition to the cut-off in them.

This art has evolved and been enriched contemporary plastic ideas and opinions, thus forming part of a new mythology in Bulgarian painting.

The gallery displays 45 works donated by the artist, covering various periods of his creative development.

Photo: [www.visitplovdiv.com](http://www.visitplovdiv.com)

Address: 1 Vassil Kunchev Str., The Old Town, Plovdiv 4000

Opening hours: Monday - Saturday: 09:00 a.m. - 5:30 p.m.;

Saturday - Sunday: 10:00 a.m. - 5:30 p.m.

Phone: +359 32 63 80 55

Tickets: Individual: 4 BGN; Combined ticket for all the expositions: 8 BGN;

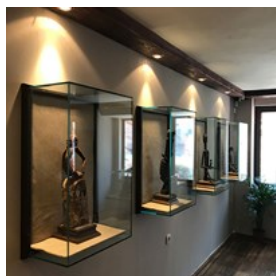
Internet: [www.galleryplovdiv.com/en](http://www.galleryplovdiv.com/en)

Email: [ghgpl1952@gmail.com](mailto:ghgpl1952@gmail.com)

More Info: <http://www.visitplovdiv.com/en/node/830>



### Trakart Research Center



Trakart Research Center is a center for cultural tourism and researches on social interactions, providing international experience and

opportunities for carrying out meetings, conferences and discussions.

The expositions are arranged on 4 levels and trace the evolutionary development of the former cultures - from palaeolithic fossils to contemporary artefacts. The expositions feature moveable artefacts gathered in two private collections - the one of Trakart-2000 Foundation, as well as the one of 'Videvi'.

Trakart Research Center is part of a complex that also includes Cultural Center Trakart in the Archaeological Underpass, where the ruins of Ancient Residential Building 'Eirene' can be explored.

Photo: [www.visitplovdiv.com](http://www.visitplovdiv.com)

Address: 25, Knyaz Alexandar Batemburg Str. - Main Shopping Str.

Opening hours: Monday - Sunday: 10:00 a.m. - 6:00 p.m.

Phone: +359 32 332 061

Tickets: Individual-5 BGN; Students - 3 BGN; Combined tickets for Trakart Cultural Center and Trakart Research Center - 8 BGN; Students - 5 BGN

Internet: <http://trakart.org>

Email: [trakartplovdiv@gmail.com](mailto:trakartplovdiv@gmail.com)

### Exhibition Hall of Union of Plovdiv Artists



Union of Plovdiv artists was established in 1990 with the purpose of promoting the works of its members. It is a successor of the Group of Plovdiv Artists and currently is integrating about

400 artists.

Its members are occupied in the field of various visual arts: painting, graphics, sculptures, applied arts, alternative forms, curator projects. Union of Plovdiv Artists is the biggest artistic association not only in Plovdiv, but generally outside the capital.

The exhibition hall of 32, Gladston Str. is a venue of the Union's activities. For the last years there have taken place a number of important events, such as the International workshop in painting, the International workshop in lithography, Symposiums in sculpture, International Art Collage Symposium and periodical exhibitions of artists from Southern Bulgaria.

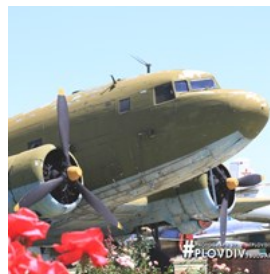
Photo: [www.visitplovdiv.com](http://www.visitplovdiv.com)

Address: 32, Gladston Str., Plovdiv 4000

Phone: +359 886 972 737

Internet: [www.plovdivartdph.eu](http://www.plovdivartdph.eu)

### Museum of Aviation



The Museum of Aviation in the village of Krumovo was established in 1991. Since 2005 it has been a branch of the National Museum of Military

History -Sofia.

The indoor and outdoor expositions display collections of aircraft, aviation engines and equipment, photos, decorations, flags and others.

There are two collections devoted to space flights, including the equipment of the first Bulgarian astronaut Georgi Ivanov, as well as photo material of taking off of Sojuz - TM-5 in 1988.

Photo: [www.visitplovdiv.com](http://www.visitplovdiv.com)

Address: Krumovo Village, Plovdiv Region 4112

Opening hours: Wednesday-Sunday: 9:00 a.m. - 5:00 p.m.

Phone: +359 32/63 66 77

Tickets: Adults: 5 BGN; Students: 2 BGN; Children up to 7 years of age: free; Family: 8 BGN; Free admission: The last Wednesday of every month.

Internet: [www.airmuseum-bg.com/eng/](http://www.airmuseum-bg.com/eng/)

Email: [airmuseum\\_bg@abv.bg](mailto:airmuseum_bg@abv.bg)

## CITYSCAPE



[www.visitplovdiv.com](http://www.visitplovdiv.com)

Plovdiv is a compact city which can be best negotiated on foot. The Main Shopping Street, which is not only a shopping paradise, but also unique in architecture, loosely bounds the Old Town, where the cultural sites from all the millennia of the city's history can be discovered, along with modern museum expositions.

The city located on six hills, which are natural areas with unique animal and plant species, and perfect for leisure activities.

The romantic atmosphere of the city can be felt whether watching the sunset from the top of a hill, or enjoying a cozy restaurant or taking a night walk downtown.

### Main Shopping Street



Plovdiv boasts with having one of the longest pedestrian streets in Europe. With its 1750 m. of length, the Main Street is not only a shopping paradise, but also an architectural phenomenon. Most of the houses here have been built in the early 20th century, their architecture

representing the Classicism, Secession and Postmodernism.

The Main Street loosely bounds the historical center of the city - the Old Town, and is tightly connected with Kapana District and the Tsar Simeon's Garden.

Its location makes it perfect for romantic nightwalks or exploring the nightlife of the city. A number of events take place there, such as the Fair of Crafts, as well as a number of concerts and fairs.

Photo: Visit Plovdiv

Address: Knyaz Alxandar I Str., Rayko Daskalov Str.

Internet: [www.visitplovdiv.com/en/node/723](http://www.visitplovdiv.com/en/node/723)

### Kapana District



The district emerged as a center for craftsmen 5 centuries ago. Nowadays, one will not find craftsmen here, but contemporary creative

entrepreneurs. This project is also part of the artistic program of "Together" - the concept and motto Plovdiv won the European Capital of Culture 2019 with. You will find galleries, workshops, ateliers, studios, cozy restaurants and shops, as well as other art spaces, and there is even a vinyl shop! All these places fill Kapana with modern cultural content not only with their daily activities but also organizing events with social, economic and cultural effect for the city, such as concerts, exhibitions, festivals, forums, art installations, screenings, workshops and many more.

Photo: Visit Plovdiv

Address: Kapana, Plovdiv 4000

Public Transport: Buses # 1,4,7,9,11,20,26,27,44

Email: [redactor@kapana.bg](mailto:redactor@kapana.bg); [reklama@kapana.bg](mailto:reklama@kapana.bg)

### Danov Hill



Danov Hill (Sahat Tepe) is located in the center of Plovdiv, west of the Main Street. In the first modern city plan, drawn by Joseph Schnitter, the hill was named the Hour Hill. Over time, there were numerous changes, the most serious of which was in 1812 (according to the Arabic inscription above the entrance). It is believed that in Roman times on the top of the hill there was a temple of Venus. Near the tower there is also a radio relay television station, built on January 18, 1956 (on July 1, 1960 it started airing radio broadcasts). Its altitude is 210 m.

Photo: Visit Plovdiv

Address: Main Street, Plovdiv 4000

More Info: <http://www.visitplovdiv.com/en/node/697>

### Liberators Hill



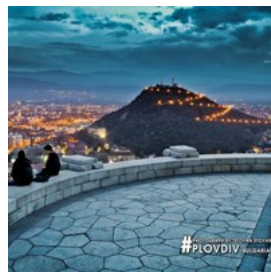
The hill is located western from the city center and is the second highest in the city with its altitude of 234 m. Its old name – Bunardzhik, which is still in use, originates from the Ottoman word Bunar (a well), and refers to the small spring that flows down the hill. The hill bears its modern name -Liberators hill, from the two monuments on the top – the Monument of Russian Liberators, who set the city at liberty from Ottoman occupation on January 16, 1878, and the one of the Unknown Russian Soldier, popular as Alyosha. The Alley of Astronauts loosely bounds both monuments, the first pine-tree here having been planted by Yuri Gagarin himself back in 1961. On the foot of the hill, there are a number of sport facilities, as well as the Summer theatre, which is a popular

venue of concerts.

Photo: Visit Plovdiv

More Info: <http://www.visitplovdiv.com/en/node/697>

### Youth Hill and Children's Railway



The top of Dzhenem Tepe is the highest altitude of the city's seven hills. The hill, which is located in the southwest part of the city, has the status of a national landmark with the aim of preservation the natural habitat of rare plant species, such as Bulgarian and Balkan relict endemic tutsan, *Astragalus physocalux*, *Genista rumelica*.

The hill has been inhabited since 3 000 B.C., and some archaeological sites from the periods have been found, such as statue of Apollo from Late Antiquity and a three-nave basilica from early-Christian times.

The children Railway is located on the foot of the Youth Hill. It was founded in 1979 and since then it has been a real attraction for the children and their parents, both citizens and visitors of Plovdiv. Thousands of kids from the region keep the memory of their very first travelling by train on the Youth Hill. The train, which consists of an engine and three carriages, starts its journey from the Pioneer Station, which has a platform, two lines, as well as traffic lights. The duration of the trip is about 25 minutes per direction. A number of cultural activities regularly take place on the foot of the hill.

Photo: Visit Plovdiv

Opening hours: Train Schedule : 10:30 a.m., 11:30 a.m., 12:15 p.m., 3:30 p.m., 4:30 p.m., 5:30 p.m.

Phone: Children's Railway: +359 889 922 388

Tickets: 1 BGN

More Info: <http://www.visitplovdiv.com/en/node/691>



### Tsar Simeon's Garden and the Lake with the Singing Fountains



Tsar Simeon's Garden in Plovdiv is created in 1892 by the Swiss landscape architect Lucien Chevalas (1840-1921). Since the summer of 2015 the

restored fountain of Goddess Demeter is brought for a new life, and a Viennese pavilion is built in the center of the park. In addition, new benches and modern children's playgrounds are installed. The trees and the flowers turn the park in a paradise garden.

The pearl on the crown of the park is the renovated Lake with the Singing Fountains. You can enjoy the light show of the lake intertwined with water effects.

The Fountain's special dance – a spectacular show with music and light can be observed every Thursday, Friday and Saturday at 21:00 during the summer season.

Photo: Visit Plovdiv

Address: Central Square, Plovdiv 4000

More Info: <http://www.visitplovdiv.com/en/node/2982>

### Leisure and Culture Park



Leisure and Culture Park is Plovdiv's greenest area, located near the bank of Maritsa river and within a reach from the city center. Within its

borders, there are a number of natural and cultural sites included, such as the Rosarium park, the biggest Rowing Canal on the Balkans, the Common Knoll, and Plovdiv Zoo, which is soon going to open its doors to visitors. The venue is also part of the city's retail area, located within a reach to big shopping centers, residence complexes, restaurants and hotels. The

cycling trail network covering almost the whole city, starts from the site.

Sport facilities are abundant in the area, including the biggest stadium in Bulgaria - Plovdiv stadium. A newly-constructed Youth Center opened doors last year and offers variety of youth activities.

Photo: Visit Plovdiv

Address: Leisure and Culture Park, Plovdiv 4000

### Rowing Canal



The Rowing Canal (Regatta Venue) in the city of Plovdiv is a sports facility for rowing. This is the largest facility of this kind in the Balkans where

rowing competitions can be held. The channel is 2 200 meters long, 120 meters wide and three meters deep. It is located adjacent to the Recreation and Culture Park. The spectators can enjoy the sports events from the renovated 800 seats grandstand.

Other sports facilities are also located at the territory of the sports complex – tennis courts, a swimming pool, a Rope Garden Attraction. Recently, the place has become extremely attractive to both the citizens and the visitors of the city. Here you can enjoy a pleasant walk or rest. Restaurants located around the Rowing facilities appear to be tempting for those willing to taste traditional dishes while enjoying calm and peaceful atmosphere.

Photo: Visit Plovdiv

Address: Leisure and Culture Park

### Monument of Bulgarian Unification - 1885



The Monument of Unification in Plovdiv was erected in 1985 on occasion the 100th anniversary of the Unification of Eastern

Rumelia and the Principality of Bulgaria in 1885. Its sculptor is Velichko Minekov. This event is one of the most important in the historical development of Bulgaria. After the Russo-Turkish war for liberation of Bulgaria from Ottoman rule, the Berlin Peace Treaty of 1878 divided Bulgaria into two independent parts (states). The northern half of the present-day territory was called Principality of Bulgaria (under the rule of a Prince) with capital Sofia, and the southern - Eastern Rumelia (under the control of a Governor, the first of whom was the prominent Bulgarian Aleko Bogoridi) with its capital Plovdiv. The Monument of Unification depicts the Mother Motherland with the laurel wreath of victory in her hands. The wings in flight symbolize the two united parts of Bulgaria. Every year on September 6th the historical event of the Unification is noted as an official holiday in Bulgaria and a Day of Plovdiv with a solemn ceremony in the square in front of the Monument.

Photo: OMGWrks - Photography & Digital Art  
Address: Unification Square, Plovdiv

### Maritsa River



Maritsa River is the largest river on the Balkan Peninsula and flows through the city of Plovdiv. The first prehistoric settlement

within the borders of the modern city was

adjacent to the river, the ancient name of which - Hebros, is now associated with legends for city's first inhabitants. The riverbank was an area where traditions in wine production were established more than 5,000 years ago by Thracian tribes and never quit.

Nowadays, one can find a number of cozy restaurants, cafeterias and open-air sports facilities along the riverbank. The pedestrian bridge at the end of the Main Shopping Street is part of the city's retail area.

Photo: Visit Plovdiv

More Info: <http://www.visitplovdiv.com/en/node/696>

### International Fair Plovdiv



In 1892, Plovdiv hosted the First Bulgarian Agricultural and Industrial Exhibition, which marked the beginning of the

exhibition industry in Bulgaria.

International Fair Plovdiv is the successor of the First Exhibition and its mission, i.e. to contribute to the prosperity of the Bulgarian people by encouraging the development of the national industry.

The exhibition calendar of International Fair Plovdiv comprises multi-branch fairs and trade exhibitions covering key sectors of Bulgarian economy. The Fair is the organizer of the most important trade forums in the country, opening up prospects for the Bulgarian producers to emerge in the international market. The trade fair and exhibition events outline the performance of Bulgarian economy, as well as the interest of the international business in our country and region.

Photo: Visit Plovdiv

Address: 37, Tzar Boris III Obedinitel Blvd., Plovdiv 4003

Phone: +359 32 902 346  
Internet: [www.fair.bg/en](http://www.fair.bg/en)  
Email: [fairinfo@fair.bg](mailto:fairinfo@fair.bg)

## RESTAURANTS & CLUBS



[www.visitplovdiv.com](http://www.visitplovdiv.com)

Plovdiv is a place where one can enjoy a real gastronomic experience with the variety of Mediterranean and traditional Bulgarian meals. What will make such dishes even better, is a glass of wine from the biggest wine region in Bulgaria.

The nightlife in the city is something one should explore, whether enjoying wine and discussions on its production in a wine club, get a drink in a cocktail bar, or discover the nightclubs in Kapana District.

### Restorant & Enoteka Bendida



In Enoteka Bandida you can enjoy a perfect selection of Ruby and Mavrud from the Plovdiv region, combined with home-prepared

traditional meals.

The club offers tasting sommelier-made menus of wine and traditional dishes, free lecture about the Thracians and their wine production, as well as organizing wine tasting events for tourist groups.

Photo: Visit Plovdiv

Address: 15 Druzha Str., Plovdiv 4002

Opening hours: Monday-Friday: 09:00 a.m. - 8:00 p.m.;  
Saturday: 09:00 a.m. - 2:00 p.m.

Phone: +359 88 791 1188

Internet: [bendida.eu](http://bendida.eu)

Email: [wine@bendida.eu](mailto:wine@bendida.eu)

### Megdana Restaurant



Megdana is the place where you get to know the Bulgarian traditions and national folklore. You can feel the unique atmosphere with

Bulgarian cuisine, fine wines and music program.

Delighted with national traditions, culinary tastes and the variety of round dances, our guests from abroad spend unforgettable evenings with their Bulgarian friends. Experience this extraordinary story at the most Bulgarian restaurant Megdana.

Photo: Visit Plovdiv

Address: 11 Odrin Str., Plovdiv 4000

Opening hours: Monday - Saturday: 11:00 a.m. - 1:00 a.m.

Phone: +359 88 596 82 70 ; +359 32 624 694

Internet: <http://megdanabg.com/>

Email: [megdana.plovdiv@abv.bg](mailto:megdana.plovdiv@abv.bg)

### Restaurant - Garden "Philippopolis"



Attractive food and wine connoisseurs from Plovdiv and around the world, Philippopolis Restaurant-Gallery & Garden, is the place in

the Old Town where you can find gourmet pleasures, or stumble upon international movie stars.

The exclusive seasonal menus are a fusion between national flavors and international



delicacies. The impressive wine list and welcoming service in this Viennese style restaurant makes you feel as if you were transported to the glorious past of the 1930s' Europe. Richly decorated in turn-of-the century Viennese style, Tiffany flair stained glass accents, original art displayed between crystal mirrors, and soft music, are the perfect ambience for quiet and romantic dinners. Its garden perched on an Ancient Roman, with incredible view towards Kapana District - the creative hub of Plovdiv - is an ideal place to spend hot summer days or host your wedding in an extraordinary atmosphere.

Photo: Visit Plovdiv

Address: 29 Saborna Str., Plovdiv

Opening hours: Monday - Sunday: 10:00 a.m. - 00:00 a.m.

Phone: +359 32 624 851

### Hemingway Restaurant



Hemingway is a place for dining, meeting people, for enjoying wine and music. The smell of delicious meals and freshly baked bread is

what entices you in for a glass of wine. The food is prepared with love, the wines are specially selected there sounds some live piano music. We offer diverse lunch and dinner menus, our wine list includes a selection of classy Bulgarian and imported wines and we strive to maintain high level of service.

Whether you want to grab a bite or have fun with colleagues and friends, Hemingway BBQ Bar & Grill is the place to go for dining, a glass of good wine and music.

Photo: Visit Plovdiv

Address: 10 Gurko str, Plovdiv 4000

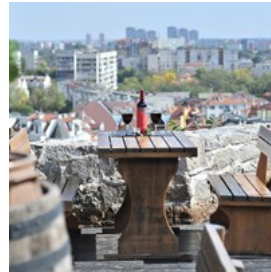
Opening hours: 09:00 a.m. - 01:00 a.m.

Phone: +359 894 49 06 36

Internet: [www.hemingway.bg/en](http://www.hemingway.bg/en)

Email: [office@hemingwaybg.net](mailto:office@hemingwaybg.net)

### Rahat Tepe



Rahat Tepe is located just on the foots of Nebet Hill in the Old Town and offers 100 seats indoors and 350 outdoors during the summer season. The

newly-constructed indoor area is hosted within a reach from the top of the hill and the outdoor summer garden offers picturesque view in the hot summer.

The restaurants offers diverse assortment of beer and traditional cuisine.

Photo: Visit Plovdiv

Address: 18-20 Dr. Stoyan Chomakov Str., Old Town, Plovdiv 4000

Opening hours: Monday - Sunday: 9:00 a.m. - 00:00 a.m.

Phone: +359 878 450 259

Internet: [www.rahat-tepe.com](http://www.rahat-tepe.com)

Email: [info@rahat-tepe.com](mailto:info@rahat-tepe.com)

### Restaurant India



The first traditional Indian Restaurant in Plovdiv is located in the heart of the city, adjacent to Saedinenie Sq. and the Archaeological Museum.

The restaurant offers a wide variety of Indian meals and drinks, the recipes for which have been passed from generation to generation. The culture and heritage of India will be delivered to your table, recreating the atmosphere of a real Indian dinner.

Photo: Visit Plovdiv

Address: 34 Petko Karavelov Str., Plovdiv 4000

Opening hours: Monday - Saturday: 10:30 a.m. - 3:30 p.m.; 6:00 p.m. - 11:00 p.m.

Phone: +359 32 20 71 48

Internet: <http://restaurant-india.com/en/>

Email: [info@restaurant-india.com](mailto:info@restaurant-india.com)

More Info: <http://www.visitplovdiv.com/en/node/2796>

### Monroe Restaurant



Monroe Restaurant is a place for connoisseurs in the center of Plovdiv with relaxing music and interior. Here you can start your day with

freshly baked snacks end a night out with quality piano music.

Photo: Visit Plovdiv

Address: 5 Antim I Str., Plovdiv

Opening hours: Round the clock

### Quattro Piano Bar



Quattro Piano Bar is located right below Memory Restaurant, at Saedinenie Square. This is the perfect place to enjoy a drink, good mood

and perfect music played by the music band Soulmate.

We are expecting you on Thursday, Friday and Saturday at 11:00 p.m.

Photo: Visit Plovdiv

Address: 3 Saedinenie Sq., Plovdiv 4000

Opening hours: Wednesday - Thursday: 9:30 p.m. - 1:30 a.m.;

Friday - Saturday: 11:00 p.m. - 4:00 a.m.

Phone: +359 894 98 44 44

Email: [quattropianobar@gmail.com](mailto:quattropianobar@gmail.com)

### Cocktail Bar Noris



The fully refurbished Cocktail Bar Noris has a modern decor and light effects which you can enjoy 24 hours per day. It is located at the city

center and has a big summer garden with 250 seats.

Cocktail Bar Noris consistently combines luxury, cozy atmosphere and friendly service.

The selection of branded drinks combined with cozy atmosphere and pleasant music will you forget the fatigue of the hard day. At evening parties a number of promotions are available.

Photo: Visit Plovdiv

Address: 27 Ilarion Makariopolski Str., Plovdiv 4000

Public Transport: Bus #9, 10

Opening hours: Round the clock

Phone: +359 32 631 718

Internet: [noris.bg/en/Coctail-bar.c135](http://noris.bg/en/Coctail-bar.c135)

Email: [hotel\\_noris@abv.bg](mailto:hotel_noris@abv.bg)

More Info: [www.visitplovdiv.com/en/node/2672](http://www.visitplovdiv.com/en/node/2672)

### Night Clubs in Kapana District



Club Marmalad – Opening hours: 11:00 p.m. - 05:00 a.m.;

Address: Bratya Pulievi Str., Kapana, Plovdiv 4000 Petnoto na Rorshach (The Spot) –

Opening hours: 10:00 p.m. – 04:00 a.m.;

Program: Monday: Quiz Night; Tuesday: Book presentations; Wednesday: Wednesday Stage Arts; Thursday: DJ set night;

Address: 36 Yoakim Gruev Str., Kapana, Plovdiv 4000

Fabric Bar – Opening hours: 6:00 p.m. – 05:00 a.m.;

Address: 31A Otets Paisiy Str., Kapana, Plovdiv 4000

No Sense - Opening hours: 6:00 p.m. - 04:00 a.m.;

Address: 5 Evlogi Feorgiev Str. , Kapana, Plovdiv 4000

Photo: Visit Plovdiv  
Address: Kapana, Plovdiv 4000

## FREE TIME & SHOPPING



[www.visitplovdiv.com](http://www.visitplovdiv.com)

Plovdiv is a paradise for everyone willing to indulge in some retail therapy.

The Main Shopping Street, which is one of the longest pedestrian streets in Europe, is not only the perfect starting point for your tour, but also area where shops of any kind are abundant. There are many shopping centers all around the city, most of them located in the close proximity of the modern city sites.

In the Old Town, one can visit a number of antique shops, purchase a traditional Bulgarian item, or enjoy hand-made souvenirs made by young artists.

## Youth Center Plovdiv



Located in the city's greenest area - Leisure and Culture Park, the Youth Center provides first-class conditions for organizing events - team

buildings, trainings, conferences, sports events, camps and others.

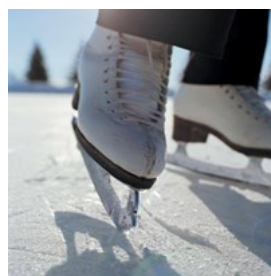
The complex is equipped with its own accommodation place, conference hall, sports area and a restaurant.

Services provided by Youth center Plovdiv:

- Dragon boats
- Lessons in rowing and canoeing
- Rent-a bike

Photo: Visit Plovdiv  
Address: 18, Yasna Polyana Str., Plovdiv  
Public Transport: Buses # 10, 15  
Phone: +359 888 900 676  
Internet: <http://youthcentre.plovdiv.bg/en/>  
Email: [ycpreservation@gmail.com](mailto:ycpreservation@gmail.com)

## Ice Rink



Plovdiv has the biggest open-air ice rink on the Balkans, which is annually open at the beginning of December. The rink has already

welcomed skating lovers and is available every day from 10:00 in the morning up to 10:00 o'clock in the evening.

Photo: Visit Plovdiv  
Address: 1, Central Square, Plovdiv 4000  
Public Transport: Buses # 1, 4, 7, 10, 11, 20, 26, 27, 44, 66, 99  
Opening hours: 10:00 a.m. - 10:00 p.m.  
Tickets: Entry: 5 BGN; Skates rental: 2 BGN



### Main Shopping Street



The Main Street is a pedestrian area in the center of Plovdiv. It starts from Central Square at the venue of Ramada Plovdiv Trimontium hotel.

Down the Main Street are Stefan Stambolov Square with the Municipality building, the Roman Stadium and Dzhumaya mosque. Near the mosque, the street loosely bounds the Old Town and The Trap (Kapana District), which is in the close proximity of the so-called Small Main Street (Rayko Daskalov Str.). Here is the Spopping Center Hali, after which the Main Street crosses 6th September Blvd. in underpass at Maritsa Pharmacy and ends at the pedestrian bridge over Maritsa River, which marks the end of the shopping area.

There are a number of shops down the pedestrian area-shops for ladies, men and children fashion, cosmetics and accessories, as well as groceries, pharmacies, bookstores and many others.

One can also enjoy the cafeterias, restaurants and some of the historical sites of the city, while indulging in retail therapy.

Photo: Visit Plovdiv

Address: Knyaz Alexander Str., Rayko Daskalov Str., Plovdiv 4000, Pedestrian Bridge

More Info: <http://www.visitplovdiv.com/en/node/723>

### Markovo Tepe Shopping Mall



Shopping Mall Markovo Tepe covers total area of 55 000 sq. m. and is designed to ensure optimal flow of visitors and visibility of

commercial sites.

In the Mall one can enjoy variety of shops, as

well as cafés and restaurants, gym and SPA center, get access to bank and mobile services. The cinema hall offers special concepts for ultimate cinema experience such as IMAX, LUXE, PREMIUM and VIP.

All the visitors have access to a parking lot with more than 600 parking spaces, located on 4 underground levels, as well as free outdoor parking area.

Photo: Visit Plovdiv

Address: 54 Ruski Blvd., Plovdiv 4000

Public Transport: Buses # 10, 12, 16, 18, 66 and others

Opening hours: Monday - Sunday: 10:00 a.m. - 9:00 p.m.

Phone: +359 32 586 957

Internet: <http://markovotepemall.bg/?go=about>

### Mall Plovdiv



Mall Plovdiv is the first modern shopping and entertainment center in Plovdiv and the region. The project is a shopping and entertainment

complex including the following facilities: a supermarket, more than 110 retail units - branches of banks, mobile operators, travel agencies, a pharmacy, a bookstore, snack bars, cafes and restaurants, Cinema City multiplex with 11 cinema halls, with underground and street parking spots.

The distance from the main shopping street is 2.5 km - about 10 minutes by car or a 20-minute walk from the city center.

Photo: Visit Plovdiv

Address: 8 Perushtitsa Str., Plovdiv 4002

Opening hours: Monday - Sunday: 10:00 a.m. - 9:00 p.m.

Phone: +359 32 25 00 84

Email: [skamburska@mos-management.bg](mailto:skamburska@mos-management.bg)

More Info: <http://www.visitplovdiv.com/en/node/721>

### Shopping Center Grand



Shopping Center Grand is located in the center of Plovdiv and spreads over a total sales area of over 27,000 square meters.

The complex, which is built on six levels, includes an underground parking lot, hypermarket, shopping area, pharmacy, commercial banks and a travel agency; offices and restaurants; In the stores, items of famous Bulgarian and the world brands with guaranteed quality are being traded. Pleasant environment, stylishly arranged shops and helpful staff makes shopping in shopping center Grand a pleasure.

Photo: Visit Plovdiv

Address: 56 Kapitan Raycho Str., Plovdiv 4000

Public Transport: Buses # 1,4,7,9,11,20,27,37,44 and others

Opening hours: Monday - Sunday: 09:00 a.m. – 8:00 p.m.

Phone: +359 32 391 350

Email: [grandplovdiv@abv.bg](mailto:grandplovdiv@abv.bg)

More Info: <http://www.visitplovdiv.com/en/node/722>

### Shopping Center Hali



Shopping Center Hali is located on the Main Shopping Street. There are 130 shops inside, located on four levels.

There you can find Bulgarian and foreign manufacturers of fashion, shoes, accessories, cosmetics, souvenirs and others.

On the ground floor is located hypermarket Billa. There is also a cafeteria, as well as a pastry shop and a children area on the territory of the complex.

Photo: Visit Plovdiv

Address: 8 Rayko Daskalov Str., Plovdiv 4000

Phone: +359 32 624 535

Email: [hali\\_plovdiv@abv.bg](mailto:hali_plovdiv@abv.bg)

### Shopping Center Excelsior



The building, which houses the shopping center, is one of the pearls of the Main Shopping Street, included in the list of the Cultural monuments with local significance.

The curious thing about the building is the ruins of the Roman Stadium found on its foundations. At the moment it is a shopping center in which one can enjoy various brands, as well as cafeterias, restaurants and a summer garden.

Photo: Visit Plovdiv

Address: 24 Knyaz Alexander Batenberg Str., Plovdiv 4000

### Market Center Plovdiv



Market Center is a modern shopping facility located in the central part of Plovdiv. Here you can discover various brands for woman, men and

children wear, as well as the shop for cosmetics, domestic products, baby food and other goods DM.

In Market Center you can find Chinese restaurant, Pizza, as well as a beer house (Ale House) and night club Pasha.

Photo: Visit Plovdiv

Address: 54 Kapitan Raycho Str. Plovdiv 4000

### Forum Trakia



Located in the biggest neighborhood in Plovdiv - Trakia District, the Forum includes over 100 shops and 6 restaurants. In the Forum you can also find children area, a cocktail bar, beauty center and others.

All the customers are provided with access to a free parking area.

Photo: Visit Plovdiv

Address: 34 Saedinenie Blvd, Trakia, Plovdiv

Public Transport: Buses # 4, 9, 99

Opening hours: Every day: 9:00 a.m. - 9:00 p.m.

Email: [office@forum-trakia.com](mailto:office@forum-trakia.com)

### Cinema Halls in Plovdiv



Cinema City Plovdiv - Mall Plovdiv (8, Perushtitsa Str., Plovdiv 4002) <http://www.cinematicity.bg/en/Eccoplexx>  
Cinema - 6th of September Blvd., <http://kinoeccoplexx.com/>

Arena Cinema - Markovo Tepe Mall (54, Ruski Blvd.) <https://www.kinoarena.com/en/cinema/arena-mall-markovo-tepe>

Lucky Cinema - 1, Gladston Str., <http://boxoffice.bg/venue/LUCKY+%D0%94%D0%BE%D0%BC+%D0%BD%D0%B0+%D0%BA%D0%B8%D0%BD%D0%BE%D1%82%D0%BE/23/>

Faces Cinema - Forum of Trakia (21, Saedinenie Str., Trakia District), <http://www.kinofaces.com/>

Photo: Visit Plovdiv

More Info: [www.visitplovdiv.com](http://www.visitplovdiv.com)

### Swimming Pools



Swimming Pool SPS (SPS Hotel) 3, Osvozhdenie Blvd, Plovdiv 4000  
Contact: [hotelsps@abv.bg](mailto:hotelsps@abv.bg)  
Swimming Complex Neptune 1A, Nicola

Vaptsarov Blvd., Plovdiv 4000

Contact: +359 87 878 7748

Spa Center Grand Hotel Plovdiv

2, Zlatyu Boyadziev Str.

Contact: +359 32 934 343

Spa Center Princess

An outdoor and an indoor swimming pools  
2, Kapitan Raycho Str., Plovdiv 4000 - Ramada Plovdiv Trimotium Hotel

Contact: [reservations.plovdiv@bgprincess.com](mailto:reservations.plovdiv@bgprincess.com)

Aqua Park Sankt Peterburg

97, Bulgaria Blvd., Plovdiv 4000 - Sankt Peterburg Hotel

Contact: +359 32 904 276

Aqualand

3, Teofan Raynov, Trakia District, Plovdiv

Contact: +359 883 70 20 60

Complex Ostrova

40, Park Otdih i Kultura Str., Plovdiv, Rowing Canal

Contact: [hotelostrova@abv.bg](mailto:hotelostrova@abv.bg)

Aquateka Fregata Cocktail Bar

Pazardzhishko Shose Blvd., 9th Kilometer Complex

Contact: +359 32 632 992

Photo: Visit Plovdiv

Address: Plovdiv

Internet: [www.visitplovdiv.com/en/free-time?field\\_free\\_time\\_t](http://www.visitplovdiv.com/en/free-time?field_free_time_t)



ype\_value\_i18n=entertainment&field\_free\_time\_subtype\_value\_i18n%5B%5D=%D0%91%D0%B0%D1%81%D0%B5%D0%B9%D0%BD&items\_per\_page=9

## USEFUL INFORMATION



[www.visitplovdiv.com](http://www.visitplovdiv.com)

### Plovdiv International Airport



International Plovdiv Airport is located next to the village of Krumovo, 15 km away from the city center (about 20 min by car). The airport is served

by the low-cost flight company Ryanair, providing direct flights to London Stansted Airport and Frankfurt Haan.

Seasonal flights served by various companies also take place.

Plovdiv International Airport is easily accessible by car and taxi. It is also served by public shared shuttles and private car transfers.

Photo: Juan Garces

Address: Plovdiv Airport, Krumovo Village, Rodopi Municipality

Opening hours: Monday - Friday: 08:00 a.m. - 4:30 p.m.

Phone: 00359 32 601 134

Internet: [www.plovdivairport.com/en/home](http://www.plovdivairport.com/en/home)

Email: [marketing@plovdivairport.com](mailto:marketing@plovdivairport.com)

### Bus (Coach) Stations



Bus Station 'Yug' (South)  
47, Hristo Botev Blvd.  
Central office: +359 32  
626 937 Buses to Sofia,  
Varna, Hisarya, Karlovo,  
Asenovgrad, Bansko,

Batak, Brestovitsa, Perushtitsa, Velingrad,  
Svilengrad, Sliven, Borovets and others.

International buses to destinations in Eastern  
and Central Europe.

Bus Station 'Sever' (North)

2, Dimitar Stambolov Str.

Office: +359 32 953 705

Services to 40 destinations north of the city,  
including Veliko Tarnovo, Kazanlak, Starosel,  
Burgas, Southern seaside (seasonal) and many  
others.

Bis Station 'Rodopi'

Services to 38 destinations and mountain towns,  
including Bachkovo and Bachkovo Monastery,  
Smolyan and others.

Photo: Visit Plovdiv

Address: Plovdiv

Public Transport: From bus stops at Tsar Boris III Obedinitel  
Blvd.: to Bus Station South - #7, 20, 26; to Bus Station North  
- #99; to Bus Station Rodopi - # 1, 11, 27

Phone: Tourist Information: +359 32 620 453

### Public Transport



The bus network in  
Plovdiv covers the whole  
city, as well as the  
suburbs. There are public  
shuttles, as well, which  
are operating as shared

taxis. The price of the ticket in the public  
transport is 1BGN. Tickets can be purchased by  
the inspector in the bus and by the drivers in the

shuttle.

Photo: Pierre-Luc Auclair

Internet: <http://transport.plovdiv.bg/desktop/>

### Taxi



All the taxis in Bulgaria are yellow in color. You can stop a taxi, as well as a public shuttle, anywhere by waving your hand. There are also

specifically designed taxi ranks on big boulevards. The normal price of a ride from the airport to the city center is 10-15 BGN; from the city center to the surrounding neighborhoods is no more than 5-7 BGN. All of the taxis have their rates per km on the passenger door.

Photo: Visit Plovdiv

### Cycling Trail Network



Plovdiv is a bicycle-friendly city. The newly-built cycling trail network covers the whole city center, main boulevards, riverbank, as

well as the area around the Rowing Canal. One can easily rent a bike and explore the modern sites of the city.

The cycling trail network is 48-kilometer long and linked with the biggest parking areas in the city.

Photo: Visit Plovdiv

Address: Plovdiv

### Plovdiv's Blue (Paid) Parking Area



Plovdiv's Blue area covers most of the streets in the city center, as well as Kapitan Raycho Str., Knyaginya Maria Luiza Blvd., Bulgaria Blvd., as

well as some of the streets between Bulgaria Blvd. and River Maritsa. The streets which are part of the Blue area are mandatorily marked with a sign in their beginning. One is able to park their vehicle for no more than 4 hours, the price per hour being 1,50 BGN.

One can pay to the Blue area officers or via text message from Bulgarian mobile number.

Self-service parking-meters are located on Otets Paisiy Str. and Knyaginya Mariya Luiza Blvd.

Photo: Visit Plovdiv

Address: Plovdiv Center

Opening hours: Monday - Saturday: 8:30 a.m. - 5:30 p.m.

Phone: 1332

Tickets: 1,50 BGN

### Post Offices



Photo: Andy Fuchs

Address: 1 Central Square, Plovdiv 4000

### Pharmacies



Non-Stop Pharmacies in the city center:

Centralpharm 1 Address: 130A Bulgaria Blvd,

Plovdiv 4000 Contact:

+359 32 953 373 Day and

Night

Address: 150 Hristo Botev Str., Plovdiv 4000  
Contact: +359 32 630 983

Malyovitsa

Address: 68 Vasil Aprilov Blvd  
Contact: +359 32 643 555

Photo: Gemma Garner

## Telephone



There are 3 mobile network operators in Bulgaria providing 2G and 3G coverage to almost the entire country - M-tel, Telenor and

Vivacom.

In the big cities there is free WiFi network mainly in the cafeterias, restaurants, hotels, big shopping centers, railway- and bus stations.

The Post Offices also provide opportunities for making domestic and international calls.

National Telephone Code: 00359; +359

Plovdiv area code: 032; 00359 32

Emergency number (Police, Ambulance and Fire Brigade): 112

Photo: Jardson Almeida

## Population

505 310 (2017)

## Currency

Lev (BGN)

## Internet

[www.visitplovdiv.com/en](http://www.visitplovdiv.com/en)  
[www.facebook.com/VisitPlovdiv/](https://www.facebook.com/VisitPlovdiv/)  
[www.instagram.com/visitplovdiv/](https://www.instagram.com/visitplovdiv/)  
[www.oldplovdiv.com/en/](http://www.oldplovdiv.com/en/)  
[www.plovdiv.bg/en/](http://www.plovdiv.bg/en/)

## Emergency numbers

Police, Ambulance, and Fire Brigade: 112

## Tourist information

Tourist Information – The Old Town  
1, Dr. Stoyan Chomakov Str.  
Tel.: +359 32 620 453

Tourist Information - Roman Stadium Sq.  
1, Rayko Daskalov Str.  
Tel.: +359 32 620 229

Their high-qualified multilingual staff will be happy to advice you on planning your stay in Plovdiv. The following free services are available for our visitors:

- Information of interest about Plovdiv given by friendly and professional multilingual staff;
- Information about the sites, museums and any tourist attractions;
- Information about the accommodation in the city;
- Information about restaurants and places for entertainment;
- Information about the public transport, busses and trains to other cities;
- Information about the forthcoming events;
- Tourist maps and brochures;
- Sale of entrance tickets for the sites managed by Ancient Plovdiv Municipal Institute ([www.oldplovdiv.com](http://www.oldplovdiv.com));
- Sale of event tickets.
- Rent a Plovdiv audio guide (Only from the Tourist Information Center at the Roman Stadium).

They offer a huge range of guidebooks, postcards, souvenirs, road maps, atlases. Here you will find a wonderful souvenir as a keepsake of Plovdiv or a wonderful little gift for your beloved ones.

Tourist Information – 1, D-r Stoyan Chomakov Str. /The Old town/

Telephone: +359 32 620 453

WORKING HOURS:

MONDAY - SUNDAY

9:00 a.m. - 6:00 p.m. /summer working time/

9:00 a.m. - 5:30 p.m. /winter working time/

Tourist Information – 1, Rayko Daskalov Str. /Roman stadium sq./

Telephone: +359 32 620 229

WORKING HOURS:

MONDAY - SUNDAY

9:00 a.m. - 8:00 p.m.