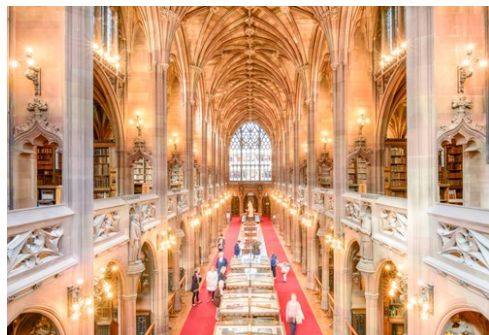




# Manchester

in collaboration with Visit Manchester

Photo: Marketing Manchester



Marketing Manchester



Marketing Manchester



Marketing Manchester

Known as the birthplace of the Industrial Revolution, Manchester is one of the most dynamic and cosmopolitan cities in the UK, with a unique character all of its own. Manchester welcomes visitors with its fine traditions of culture, music, sport and top class events. The city's vitality is expressed through its fascinating history, interactive attractions, magnificent architecture and most of all, the spirit of its people, ensuring that there's always something to do in the Greater Manchester region.

## Events



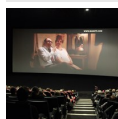
### Manchester Craft Beer Fest...

Manchester Craft Beer Festival, Manchester's only city-wide beer festival, a...



### Manchester International F...

Manchester International Festival (MIF) is the world's first festival of ori...



### Manchester Film Festival (...)

Manchester Film Festival is a truly independent film festival, committed and...



### Manchester Jazz Festival (May)

The award-winning Manchester Jazz Festival (mjf) is back to the city every M...



### Manchester Pride (August)

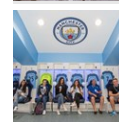
Manchester Pride is the charity that runs Manchester's annual LGBTIQ+ celeb...

## Top 5



### Manchester United Museum &...

The Manchester United Museum & Stadium Tour offers a behind



### Manchester City Football Club

Go behind the scenes at the world's fastest-growing football club. On the...



### Coronation Street Tour

ITV have opened their outdoor Coronation Street sets at MediaCityUK to the p...



### Hop-on Hop-off Sightseeing

Known throughout the world as the birthplace of the industrial revolution, M...



### National Football Museum

Whether you're a die hard football fan, planning a visit with your family or...

## THE CITY



*Marketing Manchester*

Manchester is one of the UK's most dynamic, cosmopolitan, and welcoming cities. With its fine traditions of culture, music, sport, and top-class events, there's something for everyone across the whole Greater Manchester region.

### SPORT

From football to cricket to cycling as well as a year-round programme of sports events, Manchester is packed with activities and entertainment to keep sports fans amused even when the games finish.

### CULTURE

From music and art to theatre and architecture, Manchester's culture is known for its energy and excellence.

### HERITAGE

Birthplace of the computer, the football league and Top of the Pops, Manchester's heritage is rich and diverse. Take in the history at SIM, housed in the world's first passenger railway station, or at Chethams Library, the oldest public library in the English-speaking world.

### SHOPPING

Manchester is the shopping capital of the North, offering a range of shopping experiences from high end to high street, from local to

independents.

### FOOD & DRINK

From high-end restaurants and renowned chefs setting up camp here to independent good value eateries, global cuisine and also locally produced grub on offer, Manchester has cemented itself as a culinary city.

### NIGHTLIFE

A visit to Manchester would not be complete without a night out exploring the city's bars, pubs, and clubs. Each area of the city boasts its own unique style and collection of places to choose from.

### MUSIC

Manchester has music in its soul. Mancunian exports include The Smiths, Take That, and Oasis, who have contributed some of the most important rock and pop music of all time. Today, you can enjoy an array of music from classical to jazz to rock and pop in a wide range of different venues.

### COUNTRYSIDE

Greater Manchester has miles of inspiring countryside, crisscrossed by historical waterways and dotted with picturesque towns and fascinating attractions that make for a great day out of the hustle and bustle of the city.

Explore the city like a local and discover the top things to do and see in Manchester, as well as the best restaurants, bars, nightclubs, cafes, and hotels the city has to offer, with our comprehensive, up-to-date, and free Manchester travel guide.



## DO & SEE



*Marketing Manchester*

Manchester is perhaps best known internationally for two things: music and football. Huge musical acts, including The Hollies, The Bee Gees, New Order, Oasis, Take That, Simply Red, and many more, have hailed from Manchester. And the yearly "In The City" music festival has launched many to international stardom.

Football fans will want to visit the legendary Old Trafford stadium, museum and megastore. But Manchester has a lot more to offer than just music and sports. It is a young and creative city, with outstanding museums, food and nightlife, crisscrossed by canals, which give it a unique atmosphere. And one of the greatest pleasures about visiting Manchester is exploring the various districts on foot.

### Manchester United Museum & Tour Centre



The Manchester United Museum & Stadium Tour offers a behind the scenes look at the world's most iconic stadium: the Old Trafford. Come and sit in the managers' seat in the dugout, walk through the players' tunnel towards the hallowed turf, and find the seat of your favourite player in the dressing room. Get a feel for life in the Premier

League and immerse yourself in an unrivalled story, the greatest football story ever told.

Manchester United welcomes groups of all sizes, from all over the world every day to the home of Manchester United, from individuals and families to international group tours, providing the same world-class experience to all.

Photo: Marketing Manchester

Address: Sir Matt Busby Way, Old Trafford, Stretford, Manchester

Public Transport: From: Metrolink (Old Trafford) 5 minute walk. Directions: 5 minutes walk from the stadium along Warwick Road and Sir Matt Busby Way.

Opening hours: The museum is closed on all match days

Phone: +44 161 676 7770

Internet: [www.manutd.com/museum](http://www.manutd.com/museum)

### Manchester City Football Club



Go behind the scenes at the world's fastest-growing football club. On the Stadium and Club Tour, a professional guide will navigate an unforgettable and all-encompassing tour of the club and Etihad Stadium, which captures the very essence of Manchester City.

The tour will showcase the pride, passion, and heritage of the football Club. It shows how everything that happens on and off the pitch contributes to making Manchester City the club it is today.

Visitors can see how it feels to be grilled by the media in the press conference room hot seat, visit the inner sanctum of the City dressing room, and walk down the tunnel imagining the roar of 55,000 supporters cheering on their heroes. Finally, take in the view from new manager Pep Guardiola's seat in the dug-out -

there's the opportunity to experience everything.

Outside of the football season, the stadium hosts major national and international football events as well as summer concerts. Stadium tours are available, and the club has an excellent museum packed full of football memorabilia.

Photo: Marketing Manchester

Address: Etihad Stadium, Rowsley Street, Manchester, Greater Manchester  
Phone: +44 161 444 1894  
Internet: [www.mancity.com](http://www.mancity.com)  
Email: [mancity@mancity.com](mailto:mancity@mancity.com)

### Coronation Street Tour



ITV have opened their outdoor Coronation Street sets at MediaCityUK to the public, including the world-famous cobbled street. The experience lasts around 80 minutes taking in Coronation Street, Rosamund Street and the newly extended Victoria Street, with plenty of opportunities for photos. Visitors will walk in the footsteps of the famous residents, discover filming secrets and hear stories of their favourite characters.

Photo: Marketing Manchester

Address: The Studios from Dock 10, MediaCityUK, Trafford, Greater Manchester  
Opening hours: Tours run between 9am and 6pm on selected weekend days only, when cast and crew have downed scripts for the weekend.  
Phone: +44 871 222 8223  
Internet: [www.coronationstreetexperience.co.uk](http://www.coronationstreetexperience.co.uk)

### Hop-on Hop-off Sightseeing



Known throughout the world as the birthplace of the industrial revolution, Manchester has a proud history in science, politics, music, arts and sport. Discover the city's heritage and how it has grown to be the progressive hub it is today with a 90 minute bus tour.

The 15 stop hop-on hop-off tour has been carefully planned to take you round some of Manchester's key sights including Town Hall Manchester, National Football Museum, Museum of Science and Industry and Manchester United Football Club.

Your ticket is valid for 24 hours from time of purchase if on the bus or from the date chosen if online and you can board any Sightseeing Manchester branded bus during this time. There is one main tour route with recorded commentary in English. For other languages there is a free app which can be downloaded from the App Store and Google Play.

Photo: Marketing Manchester

Internet: [www.sightseeingmanchester.com](http://www.sightseeingmanchester.com)

More Info: English commentary by Lord of the Rings and Lost actor Dominic Monaghan.

### National Football Museum



Whether you're a die hard football fan, planning a visit with your family or on a weekend break to the great city of Manchester, enjoy a visit to the world's biggest and best football museum. Delve into the social history and culture of the beautiful game, exploring football's past and

present through the museum's extensive collection.

Photo: Marketing Manchester

Address: Urbis Building, Cathedral Gardens Manchester

Opening hours: Daily 10am–5pm

Phone: +44 161 605 8200

Internet: [www.nationalfootballmuseum.com](http://www.nationalfootballmuseum.com)

Email: [info@nationalfootballmuseum.com](mailto:info@nationalfootballmuseum.com)

## Play Factore



Play Factore is the UK's leading family entertainment centre.

With facilities that cater for children from 6 months to 16 years old,

Play Factore is the only family entertainment arena in the UK where parents can play with children on age-applicable equipment — meaning you can join in the fun with your little adventurers too! Play Factore's state-of-the-art venue houses the largest play frame in the UK along with a host of other unique attractions that are second to none. Based in Manchester next to the Trafford Centre, Play Factore provides a complete day out for families shopping in the area and planning to entertain the children.

Photo: Marketing Manchester

Address: Trafford Quays Leisure Village, 7 Trafford Way, Trafford Park, Stretford, Manchester

Opening hours: Daily 10am–6pm

Phone: +44 161 748 6851

Internet: [www.playfactore.com](http://www.playfactore.com)

Email: [info@playfactore.com](mailto:info@playfactore.com)

More Info: Online booking is required

## Crystal Maze LIVE Experience



In the 90s, The Crystal Maze was one of the UK's favourite television shows. Now it's your turn to be the star of the show. The ultimate team

challenge, in which you and your friends face challenges testing your skill, mental and physical ability across four adventure time zones: Aztec, Industrial, Futuristic, and Medieval. For each challenge completed, your team will earn a Crystal. The more Crystals you earn, the more time you'll get in the final challenge — The Crystal Dome!

Build a team of 8 of your friends with a variety of skills to take on the challenge of the Maze.

Photo: The Crystal Maze Live Experience

Address: St Johns, Lower Byrom Street, Manchester

Phone: +44 161 791 0727

Internet: [the-crystal-maze.com/manchester](http://the-crystal-maze.com/manchester)

Email: [guestservices@the-crystal-maze.com](mailto:guestservices@the-crystal-maze.com)

More Info: Near the Science & Industry Museum

## Chinatown



Manchester's Chinese district is one of the largest in Europe.

Top-class restaurants nestle side by side with real street food

establishments. You will also find Korean, Thai and Indonesian shops and restaurants here.

Photo: Elzbieta Sekowska / Shutterstock.com

Address: Faulkner Street, Manchester, Lancs, M1 4FH

Internet: [www.visitmanchester.com/things-to-see-and-do/chinatown-p275031](http://www.visitmanchester.com/things-to-see-and-do/chinatown-p275031)



### Chester Zoo



Chester Zoo is home to over 21,000 endangered and exotic animals based in beautiful, award-winning gardens and is the nearest large

zoo to Manchester. With over 500 different animal species in their 125 acres, visitors are sure to have an adventure discovering and learning about the amazing wildlife.

Conservation and education are at the heart of everything at Chester Zoo. They are committed to providing the highest standards of care for their animals as well as protecting native and international wildlife. Their team of expert and knowledgeable staff work hard to prevent extinction and are passionate about connecting visitors to the natural world. Chester Zoo has a variety of tours and hands-on experiences as well as daily animal talks to guarantee a day full of animal adventure.

Stop for a snack at one of their many restaurants, cafes, and kiosks - including their recently refurbished contemporary British pub, The Oakfield. It's a huge zoo, but there are plenty of options for getting around, including the Zoofari Monorail and the Lazy River Boat Trip on the Islands. Don't forget to stop in at the gift shop on your way out for a souvenir of your trip.

Photo: Chester Zoo

Address: Chester Zoo, Upton-by-Chester, Chester, CH2

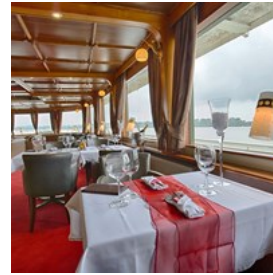
Opening hours: Daily 10am-4pm

Phone: +44 1244 380280

Internet: [www.chesterzoo.org](http://www.chesterzoo.org)

Email: [guest.services@chesterzoo.org](mailto:guest.services@chesterzoo.org)

### City Centre Cruises



Get a slightly different perspective of Manchester on a canal cruise. Flow along the Manchester Canals and see the most important and beautiful sights of the city while enjoying a buffet or drink on board.

Photo: Eviled / Shutterstock.com

Address: Liverpool Road, Castlefield, Manchester

Opening hours: Mon-Fri 10am-5pm

Phone: +44 161 902 0222

Internet: [www.citycentrecruises.co.uk](http://www.citycentrecruises.co.uk)

Email: [boat@citycentrecruises.co.uk](mailto:boat@citycentrecruises.co.uk)

### Ordsall Hall



Ordsall Hall is Salford's 'hidden gem'. Dating back over 600 years, it is one of the region's finest examples of an Elizabethan black and

white half-timbered manor-house. Wander back through time soaking up the atmosphere of its fully-furnished Great Hall and Star Chamber Bedroom.

Get the low-down on Tudor lifestyles; maybe reminisce in its Victorian showcase and kitchen, or unearth the wealth of new discoveries to be made in its exciting and informative family events and exhibitions programme.

Photo: Ordsall Hall

Address: 322 Ordsall Ln, Salford M5 3AN

Phone: +44 161 872 0251

Internet: <https://ordsallhall.com>

Email: [ordsall.hall@scll.co.uk](mailto:ordsall.hall@scll.co.uk)

### John Rylands Library



For those who set eyes on Deansgate's The John Rylands Library for the first time, 'library' might not be the first word that comes to mind. This masterpiece of Victorian Gothic architecture looks more like a castle or cathedral.

When John Rylands died in 1888, he was one of Manchester's most successful industrialists with a personal fortune of £2.75million. The library was commissioned in 1890 by his wife Enriqueta Rylands in memory of her late husband.

This world-class collection includes the oldest known piece of the New Testament, the St John Fragment. Other treasures of the vast, varied collection include magnificent illuminated medieval manuscripts and a 1476 William Caxton edition of Chaucer's Canterbury Tales.

Photo: John Rylands Library  
Address: 150 Deansgate, Manchester M3 3EH  
Phone: +44 161 306 0555  
Internet: [www.library.manchester.ac.uk/rylands/](http://www.library.manchester.ac.uk/rylands/)  
Email: [jrl.visitors@manchester.ac.uk](mailto:jrl.visitors@manchester.ac.uk)

### Jodrell Bank Discovery Centre



A beloved landmark in the Cheshire countryside south of Manchester, the Jodrell Bank Discovery Centre is a reminder of just how important the city is to the world of science.

The University of Manchester's impressive radio telescope centre is a key part of the UK's astronomy research, scanning the skies to improve our knowledge of the Universe.

The Jodrell Bank Discovery Centre allows visitors to discover the Universe beside the world-famous Lovell Radio Telescope and explore the planet Earth in the beautiful 35-acre tree-filled gardens.

Photo: Jodrell Bank  
Address: Macclesfield SK11 9DL  
Opening hours: Daily 10am-5pm  
Phone: +44 1477 571766  
Internet: [www.jodrellbank.net](http://www.jodrellbank.net)  
Email: [jodrell.visitor.centre@manchester.ac.uk](mailto:jodrell.visitor.centre@manchester.ac.uk)

### East Lancashire Railway



With a storied history stretching back to the beginning of the Industrial Revolution, the East Lancashire Railway is the steam powered heart of the Irwell Valley, pumping goods and people around the region for nearly 200 years!

The line runs for 12 miles through scenic Lancastrian Landscapes, from beautiful rural panoramas and postcard pretty villages to bustling Victorian towns and cotton mill dotted horizons. Each station offers something unique, from historical Heywood to relaxing Rawtenstall, scenic Summerseat and bustling Bury. Make the trip from Grandparent to Grandchild on a journey that spans generations on this heritage railway.

Photo: Marketing Manchester  
Address: Bury Bolton Street Station, Bolton Street, Bury, Greater Manchester  
Internet: [www.eastlancsrailway.org.uk](http://www.eastlancsrailway.org.uk)

### Chill Factore



Looking for a family day out packed with excitement and bursting with fun? Look no further than Manchester's indoor real snow centre, Chill

Factore.

Guaranteed to get the whole family away from their screens, Snow Park is the perfect real snow activity for all the family. Prepare for bumps of the Downhill Donuts, the twists and turns of the Luge Slip 'n' Slide, and the Snow Luge. What's a fun day out without a bit of family competition? Choose your favourite sledge and race to see who's king and queen of the slope!

Photo: Chill Factore

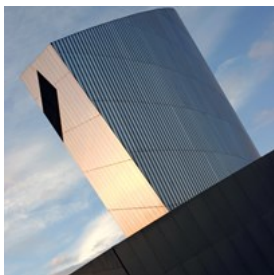
Address: 7 Trafford Way, Trafford Park, Stretford, Manchester M41 7JA

Phone: +44 161 749 2222

Internet: [www.chillfactore.com](http://www.chillfactore.com)

Email: [info@chillfactore.com](mailto:info@chillfactore.com)

### Imperial War Museum North



The IWM North is about people and how their lives have been, and still are, shaped by war and conflict. The building is by international architect

Daniel Libeskind and is a symbol of our world torn apart by conflict.

Photo: photogen/Shutterstock.com

Address: Trafford Wharf Rd, Trafford Park, Stretford, Manchester M17 1TZ

Public Transport: Eccles line to MediaCityUK.

Opening hours: Wed-Sun 10am-5pm

Phone: +44 161 836 4000

Internet: [www.iwm.org.uk/visits/iwm-north](http://www.iwm.org.uk/visits/iwm-north)

### Standedge Tunnel & Visitor Centre



Hard hats at the ready! Standedge Tunnel is Britain's longest, deepest and highest canal tunnel, hidden deep beneath the beautiful Pennine

countryside. One of the seven wonders of our waterways, this must-see attraction is located in Marsden, a charming Yorkshire village.

A great day out for all the family, there is something for everyone to enjoy! Discover the history of Standedge in the visitor centre which is free to enter. Learn the stories of the folk that built and navigated this tremendous tunnel. Meanwhile, the kids will be kept occupied in the indoor soft play area and outdoor adventure play area!

Feeling peckish? You'll find the wonderful Watersedge Café in the old Tunnel End cottages. Enjoy a cup of tea and a slice of cake or visit for lunch on a lovely summer's day by the canal. You may even see the resident ducks, Jemima and Duncan, float past the picnic tables.

Photo: Marketing Manchester

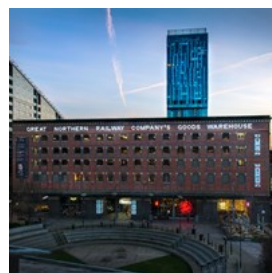
Address: Waters Road, Marsden, Huddersfield, West Yorkshire

Phone: +44 1484 242792

Internet: [canalrivertrust.org.uk/places-to-visit/standedge-tunnel-and-visitor-centre](http://canalrivertrust.org.uk/places-to-visit/standedge-tunnel-and-visitor-centre)

Email: [standedge@canalrivertrust.org.uk](mailto:standedge@canalrivertrust.org.uk)

### Great Northern



The Grade 2 listed Great Northern building, a former railway goods distribution warehouse is now a lively leisure and shopping development



with bustling bars, restaurants, shops, health club, cinema, casino, bowling alley and an elegant landscaped public square. Located on Deansgate in the centre of Manchester, Great Northern offers the city centre destinations with a touch of class.

Photo: Marketing Manchester

Address: 235 Deansgate, Manchester

Phone: +44 161 832 8136

Internet: [www.thegreatnorthern.com](http://www.thegreatnorthern.com)

### Bramall Hall



This magical Tudor manor house is set in more than 50 acres of parkland with lakes, woods and gardens. The house contains 16th

century wall paintings, fine Elizabethan plaster ceilings, Victorian kitchens and servants' quarters. Today, Bramall Hall functions as a museum, and its landscaped parkland is open to the public.

Photo: O1ive/cc by-sa 3.0/wikimedia(image cropped)

Address: Bramhall Park, Stockport, Greater Manchester

Internet: [www.stockport.gov.uk/topic/bramall-hall](http://www.stockport.gov.uk/topic/bramall-hall)

More Info: The hall reopened in 2016 following a £1.6 million renovation.

### Stockport Air Raid Shelters



Step back in time and experience the sights and sounds of Britain's Home Front. Wander around the original tunnels, authentically

re-equipped, which provide you with first-hand experience of daily life in 1940s wartime Britain.

Enjoy the displays and the state-of-the-art audio-guide which tell the stories of local people

who shared the experience of the war.

Opened in 1939, the shelters were the largest purpose-built civilian air raid shelters in the country designed to provide shelter for up to 3,850 people. They were extended in 1940-41 to accommodate 6,500.

In 1996 Stockport Council re-opened the shelters as a visitor attraction and this unique, award-winning museum became one of Stockport's most significant attractions and educational facilities. Excavated into the natural sandstone cliffs of the town centre, the mile-long network of underground tunnels offers visitors a direct and exceptional insights into life on the Home Front.

Photo: Marketing Manchester

Address: 61 Chestergate, Cheshire, Stockport

Opening hours: Self-guided tours: Tue-Fri 1pm-4pm, Sat 10am-4pm, Sun 11am-4pm, Mon closed

Phone: +44 161 474 1940

Internet: [www.stockport.gov.uk/topic/air-raid-shelters](http://www.stockport.gov.uk/topic/air-raid-shelters)

Email: [airraidshelters@stockport.gov.uk](mailto:airraidshelters@stockport.gov.uk)

### Heaton Park



At Heaton Park, the largest and most beautiful park in the area, you can find plenty of family activities, such as an animal centre, tram

museum, bowling greens, golf course, boating lake, and horse riding. If you haven't brought your picnic basket, there are cafes to solve that problem.

Photo: Alastair Wallace / Shutterstock.com

Address: Middleton Road, Higher Blackley, Manchester

Opening hours: Daily 8am-dusk

Phone: +44 161 773 1085

Internet: [www.manchester.gov.uk/heatonpark](http://www.manchester.gov.uk/heatonpark)

### Victoria Baths



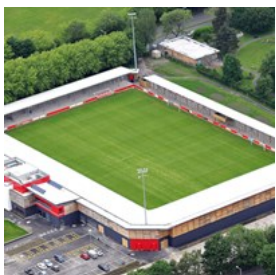
The Victoria Baths complex was designed by Manchester's first City Architect Henry Price, and opened in 1906. No expense was spared — the façade has multicoloured brickwork and terracotta decoration, the interior spaces are clad in glazed tiles and most of the windows have decorative stained glass. At the opening ceremony, the Lord Mayor described Victoria Baths as 'a water palace of which every citizen of Manchester is proud'.

For 86 years the baths provided both essential and leisure facilities. Private baths and a laundry were housed there alongside three swimming pools and Turkish Baths. In 1952 the first public Aeratone (Jacuzzi) was installed. Even though the baths were closed in 1993, the Grade II listed building is remarkably intact with most of the stained glass and original tiling remaining.

Victoria Baths opens from March/April to October/November each year for weekly guided tours, public open days and special events.

Photo: Marketing Manchester  
Address: Hathersage Road, Manchester, Lancashire  
Phone: +44161 224 2020  
Internet: [www.instagram.com/victoriabaths](https://www.instagram.com/victoriabaths)

### FC United — Broadhurst Park



Centre.

FC United of Manchester is a community benefit society and a not-for-profit organization based on the outskirts of Manchester City

They pledge “to develop strong links with the local community” and our volunteers and supporter base make us what we are and by doing so make a positive difference in Manchester and help change football for the better. Whatever your background, story or beliefs, you are always sure of a warm welcome at Broadhurst Park.

Photo: FC United/Marketing Manchester  
Address: Broadhurst Park, 310 Lightbowne Road, Moston  
Phone: +44 161 769 2005  
Internet: [fc-utd.co.uk](http://fc-utd.co.uk)

### Hall i' th' Wood Museum



This Grade 1, 16th-century half-timbered hall is one of the northwest's most important buildings. Visitors can enjoy

displays of 17th and early 18th-century furniture, objects and artefacts, learn more about the life and work of Samuel Crompton, and discover all about life in Stuart and Tudor times. The rooms have been accurately refurbished to retain their homely atmosphere.

Hall i' th' Wood Museum started life as a rich merchant's home during the mid-17th century. Years later, the building was split into several rented dwellings and, whilst living in one of these with his family, Samuel Crompton famously invented the Spinning Mule in 1779.

The mule went on to be one of the most significant spinning machines used by the textile industry. The house and grounds were presented to the people of Bolton in memory of Samuel Crompton and opened to the public as a museum in 1902.

Photo: <https://www.flickr.com/photos/dgeezer/>  
Address: Hall I' Th' Wood Ln, Bolton BL1 8UA  
Phone: +44 1204 332377  
Internet: [www.boltonlams.co.uk/hall-i-th-wood-museum](http://www.boltonlams.co.uk/hall-i-th-wood-museum)  
Email: [historichalls@bolton.gov.uk](mailto:historichalls@bolton.gov.uk)

### Manchester Opera House



Opening all the way back in 1912, the Manchester Opera House hosts a constantly evolving lineup of theatrical and musical performances, from

timeless operas and ballets to more contemporary concerts and artists.

Photo: Tupungato/Shutterstock.com  
Address: 3 Quay St, Manchester M3 3HP  
Phone: +44 333 009 5399  
Internet:  
[www.atgtickets.com/venues/opera-house-manchester/](http://www.atgtickets.com/venues/opera-house-manchester/)  
More Info: The box office will open 90 minutes prior to performances

### Lake District National Park



The great outdoors is just around the corner, and The Lake District National Park in Cumbria is England's largest national park. The Lake

District offers some of the best scenery and outdoor pursuits in one of England's few mountainous regions. With more than 3,500 kilometres of walking and hiking routes through the lakes, there's a trail to suit everyone. For the daredevils there is also hang gliding, paragliding, kayaking, canoeing, water skiing, rock scrambling, abseiling, hot-air ballooning, paintballing and much more.

Photo: Undivided / Shutterstock.com  
Address: Lake District National Park, Cumbria  
Internet: [www.lakedistrict.gov.uk](http://www.lakedistrict.gov.uk)

Email: [hq@lakedistrict.gov.uk](mailto:hq@lakedistrict.gov.uk)

### DINING



*Marketing Manchester*

The dining scene in Manchester is more interesting and varied by the day. All manner of new restaurants, gastropubs and bars keep popping up around the city, which now ranks among the country's best and most diverse culinary destinations. A local speciality is the Manchester Egg, the city's take on the Scotch egg, which is wrapped in black pudding and sausage, then breaded and deep-fried, and should not be missed.

### Hard Rock Cafe



Located in the city centre, the UK's largest Hard Rock serves what can only be described as "The Official Food of Rock", generous drinks and an awe-inspiring collection of rock memorabilia.

Visit Hard Rock Cafe Manchester for a family-friendly dining experience that truly rocks! They're conveniently situated within The Printworks entertainment complex, close to the Arndale Shopping Centre and opposite the National Football Museum, so drop in and see how they can rock your world!



The venue has an awe-inspiring collection of unique rock memorabilia, with priceless pieces from The Beatles, Oasis and Elvis adorning the walls. Their Rock Shop stocks a wide range of official Hard Rock Cafe Manchester merchandise from T-shirts to glassware and umbrellas for you to buy as a memento of your visit to our beautiful city.

Photo: Hard Rock/Marketing Manchester

Address: The Printworks, Manchester

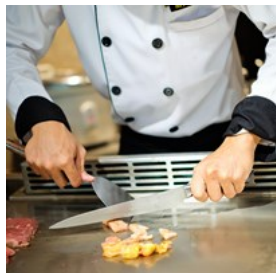
Opening hours: Sun-Thu noon-10pm, Fri noon-11pm, Sat 11am-11pm

Phone: +44 161 831 6700

Internet: [www.hardrockcafe.com/location/manchester](http://www.hardrockcafe.com/location/manchester)

Email: [manchester\\_social@hardrock.com](mailto:manchester_social@hardrock.com)

### Sapporo Teppanyaki



Teppanyaki is a staple of Japanese cuisine, a way of cooking using an iron griddle. At Sapporo Teppanyaki the chefs will entertain you with a show as they prepare your meal in front of your very eyes. To complete your Japanese experience Sake and Japanese cocktails, beers and whiskeys are to be found on the drinks menu.

Photo: waranya\_photo / Shutterstock.com

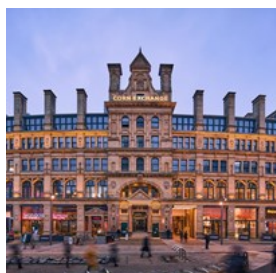
Address: 91-93 Liverpool Road, Manchester

Opening hours: Mon-Sat noon-11pm, Sun noon-10:30pm

Phone: +44 161 831 9888

Internet: [sapporo.co.uk/japanese-restaurant-manchester](http://sapporo.co.uk/japanese-restaurant-manchester)

### Corn Exchange



Corn Exchange is a stunning renovated grade II listed building at the very heart of Manchester, housing 13 restaurants serving a variety of high

quality world cuisine. With options including Greek, German, Italian, Indian, British, Pan Asian and Vietnamese cuisines, there's something to suit every taste or occasion.

With neighbours including Manchester Victoria Station, Manchester Arena, the National Football Museum, Selfridges and Manchester Cathedral, Corn Exchange's location is perfect for exploring the city's most popular sights.

Photo: Corn Exchange/Marketing Manchester

Address: Exchange Square, Manchester

Opening hours: Daily 10:30am-11:30pm

Phone: +44 161 834 8961

Internet: [cornexchangemanchester.co.uk](http://cornexchangemanchester.co.uk)

### TNQ — The Northern Quarter Restaurant & Bar



TNQ is an independent neighbourhood restaurant in the heart of Manchester's Northern Quarter, led by head chef Anthony Fielden. Served in a relaxed & stylish dining room, famous for its exposed wooden floor & grand windows showcasing the iconic Smithfield Fish Markets.

Bold & thought provoking contemporary British cuisine is crafted using only the finest seasonal ingredients the British Isles has to offer.

Photo: TNQ/Marketing Manchester

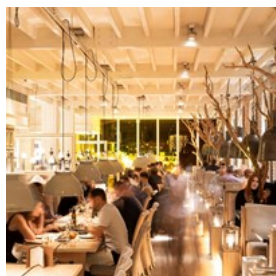
Address: 108 High Street, Manchester

Opening hours: Mon-Sat noon-10pm, Sun noon-7pm

Phone: +44161 832 7115

Internet: [www.tnq.co.uk](http://www.tnq.co.uk)

### Australasia



Australasia isn't bound by tradition or a set of ideas about how an ingredient should be cooked, what it goes with or how it should be served. The award-winning chef and former young Australian chef of the year, Paul Greening, epitomises this ethos perfectly.

Its strong ties with China and Japan have also helped determine the style of cooking, particularly the Japanese desire for perfection. Intriguing from the outside and beautiful within, the bespoke glass entrance on Spinningfields Square, Deansgate, is sure to catch the eye, sweeping guests downstairs to the irresistible charms of the restaurant's amazing cuisine and relaxed ambience.

Photo: Australasia/Marketing Manchester  
Address: 1 The Avenue, Spinningfields, Manchester  
Opening hours: Daily noon-midnight  
Phone: +44 161 831 0288  
Internet: [australasia.uk.com](http://australasia.uk.com)

### Shoryu Ramen



Shoryu Ramen are the go-to in Manchester for delicious ramen and other Japanese sides such as karaage chicken, char siu barbecue pork belly

Shoryu buns and soft shell crab tempura.

Founder Tak Tokumine and Executive Chef Kanji Furukawa, both born and bred in Hakata, have dedicated their lives to bringing a taste of their hometown to the UK. Their authentic Hakata tonkotsu ramen is made with a thick, rich, white pork soup and thin, straight ramen noodles, although they also offer gluten free and

vegetarian options.

Alongside their famous ramen, Shoryu Ramen offer an excellent selection of premium spirits, expertly mixed cocktails and sake to complement any meal, making it the perfect spot for pre-theatre bites or just to take a break from the bustling city.

Photo: Shoryu Ramen/Marketing Manchester  
Address: 1 Piccadilly Gardens, Manchester  
Opening hours: Sun-Tue 11:30am-10:30pm, Wed-Sun 11:30am-11pm  
Internet: [www.shoryuramen.com/stores/76-manchester](http://www.shoryuramen.com/stores/76-manchester)  
Email: [Hello@shoryuramen.com](mailto:Hello@shoryuramen.com)

### Banyan Bar & Kitchen



During the day, Banyan is a spacious and relaxing bar with floor to ceiling windows offer customers a perfect place to meet up for coffee and cake, breakfast and brunch, sharing boards, a nice chilled glass of champagne or a cocktail crafted by award-winning mixologists.

The comprehensive drinks menu includes an incredible array of cocktails, offering a mixture of the classics and some with a Banyan twist. The beer and wine list has been personally chosen by some of the best beer and wine connoisseurs in the country ensuring all tastes and palates are catered for.

In the evening, the kitchen area seats 90, offering meals for everyone in a more formal setting. A huge open kitchen and a 20 cover Chef's Table form part of the dining experience with attention to detail on the menu second to none, using fresh local produce to provide customers with a meal of the finest quality.

Photo: Banyan/Marketing Manchester

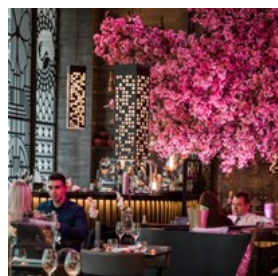
Address: Unit 4, The Corn Exchange, Exchange Square, Manchester

Opening hours: Sun-Thu 10am-11pm, Fri & Sat 10am-midnight

Phone: +44 161 832 4798

Internet: [www.banyanbar.co.uk/bars/corn-exchange](http://www.banyanbar.co.uk/bars/corn-exchange)

### Tattu



The menu at Tattu features dim sum and small plates created by a talented team led by head chef Clifton Muil. The bar has an extensive cocktail menu and wine list including a selection of sake.

There is both high table seating and intimate booth seating for groups, with a menu of champagne and bottle serves available. The decadent Tattu Parlour is the venue's exclusive private room, serviced by its own entrance, bar and restroom facilities. The Parlour is available for bookings of up to 30 people for a seated dining experience or up to 60 standing for a canapé reception or event.

Photo: Tattu/Marketing Manchester

Address: 3 Hardman Square, Manchester

Opening hours: Sun-Thu noon-midnight, Fri & Sat noon-1am

Phone: +44 161 819 2060

Internet: [tattu.co.uk/locations/manchester](http://tattu.co.uk/locations/manchester)

### The Anthologist



The Anthologist is Drake & Morgan's second site in the city centre, the 'big sister' to The Refinery in Spinningfields, bringing a constant flow of new

drinks and dishes from across the globe, a unique range of innovative cocktails and all-day dining.

This new northern bar and restaurant is located in one of Manchester's most sought-after locations, offering an everyday escape right in the heart of the city. The beautiful external planted terrace offers an all-year round alfresco drinking and dining, perfect for people-watching with a glass of rosé.

The Anthologist features an open kitchen and a striking cocktail bar, with distinctive dining areas complemented by the soft finishing touches of copper herb pots, warm tea lights and gorgeous cushions and blankets. Stop by for everything from quick breakfast meetings to long, lazy brunches and cocktails.

Photo: The Anthologist/Marketing Manchester

Address: One St Peters Square, Manchester

Opening hours: Mon-Thu 11am-11pm, Fri 11am-midnight, Sat 10am-midnight, Sun 10am-6pm

Phone: +44 161 667 0640

Internet:

[www.drakeandmorgan.co.uk/the-anthologist-manchester](http://www.drakeandmorgan.co.uk/the-anthologist-manchester)

### Vermilion & Cinnabar



Vermilion & Cinnabar is a huge 3 storey Asian fantasy wonderland that includes a restaurant, cocktail lounge and club. Its unique décor, electric

ambience, attention to detail and the restaurant's exquisite Thai & Indian cuisine made Vermilion & Cinnabar a landmark for Manchester, receiving amazing reviews from Wallpaper magazine, The Guardian, Tim Burton, Tatler, David Cameron, Arena Magazine and GQ.

Vermilion & Cinnabar were designed by worldwide renowned designers Miguel Cancio Martins (Buddha Bar, Paris / Alain Ducasse's



Crystal of Marrakech), Ken Winch (Buckingham Palace), Warmrain (Sketch, London) and Firefly (Hakkasan, London) to create the ultimate Asian Escapism.

Photo: Vermilion Restaurant/Marketing Manchester

Address: Lord North Street, Off Hulme Hall Lane, Manchester

Opening hours: Vermilion: Sun-Fri 5pm-11pm, Sat 4pm-11pm. Cinnabar: Fri 5pm-midnight, Sat 4pm-1am

Phone: +44161 202 0055

Internet: [vermilion.uk.com](http://vermilion.uk.com)

### Wood Restaurant



The concept of Wood in Manchester is unintimidating high-end dining. The restaurant leans heavily into spectacle and new

experiences: enjoy the open kitchen with à la carte, theatre and tasting menus.

The founder of Wood is a former Data Manager, Simon, who started cooking when he could 'reach the top of an oven'. Thirty years later, Simon's MasterChef win saw him fulfilling a dream he has had since he was young. Since winning MasterChef, Simon has worked with Marcus Wareing, Theo Randal and Simon Rimmer before opening his own restaurant.

Photo: Wood Manchester/Marketing Manchester

Address: Jack Rosenthal Street, Manchester

Opening hours: Dinner: Wed & Thu 5pm-8:30pm, Fri & Sat 5pm-9pm. Lunch: Fri & Sat noon-1:45pm

Phone: +44 161 236 5211

Internet: [woodrestaurantgroup.com/manchester](http://woodrestaurantgroup.com/manchester)

Email: [marketing@woodmanchester.com](mailto:marketing@woodmanchester.com)

### Zouk Tea Bar & Grill



Founded by two entrepreneurial brothers, Zouk is a multi-award-winning restaurant that offers refreshing Indian and

Pakistani cooking for the health conscious dine, with a menu and atmosphere infused with vitality, fun and passion. A restaurant for food lovers, signature dishes include their famous Indian Sajji Roasts which offer a whole leg of lamb or whole roast chicken marinated in spices and served with spicy roast potatoes and delicious gravy, or you can opt for their classic Lahori dishes such as Lamb Nihari, Magaz and Paya. Alternatively, try the seafood menu or the renowned regional monthly specials.

Photo: Zouk Tea Bar & Grill/Marketing Manchester

Address: Unit 5 Quadrangle, Chester Street, Manchester

Opening hours: Daily noon-midnight

Phone: +44 161 233 1090

Internet: [zoukteabar.co.uk](http://zoukteabar.co.uk)

Email: [info@zoukteabar.co.uk](mailto:info@zoukteabar.co.uk)

### Don Giovanni



Head to award-winning Italian Don Giovanni on St Peter's Square for hand-crafted cocktails, a superb lunch menu and pre-theatre dining that

will start your evening on a high.

Situated in the heart of Manchester's theatre strip, Don Giovanni is the city's oldest Italian restaurant and has been feeding the public for over 30 years. It is perfectly positioned for the Palace Theatre, Opera House, Manchester Central, Bridgewater Hall and many other city centre attractions.

Showcasing freshness and quality first; Don Giovanni integrate traditional Italian culture into every dish with homemade pizza, bread, pasta and desserts created freshly in house.

Photo: Don Giovanni/Marketing Manchester

Address: Unit 1 & 2 Peter House, Oxford Street, Manchester

Opening hours: Mon-Thu noon-11pm, Fri & Sat  
noon-11:30pm, Sun noon-10pm

Phone: +44 161 228 2482

Internet: [dongiovanni.uk.com](http://dongiovanni.uk.com)

### Hawksmoor



Hawksmoor Manchester is a British steakhouse and cocktail bar located in a late Victorian courthouse on Deansgate.

Their menu revolves around the best ingredients they can find — whether it be beef from ethically-reared, grass-fed native cattle, sustainable seafood from around the British coast or seasonal fruits and vegetables. All cooked simply and served by friendly people who love what they do. This is accompanied by a list of carefully selected wines, original cocktails and beers brewed locally in the North West.

Photo: Hawksmoor Manchester/Marketing Manchester

Address: 184-186 Deansgate, Manchester

Opening hours: Mon-Thu noon-3pm / 5pm-9:30pm; Fri  
noon-3pm / 4pm-10pm; Sat noon-10pm, Sun noon-9pm

Phone: +44 161 836 6980

Internet: [thehawksmoor.com/locations/manchester](http://thehawksmoor.com/locations/manchester)

### Tampopo



A laid-back and inexpensive place with long tables and benches, Tampopo is a great option when you're looking for a quick bite to eat. Asian

flavours fill the menu, with options such as noodles, curries and stir-fries.

Photo: Silatip / Shutterstock.com

Address: 16 Albert Square, Manchester

Opening hours: Mon-Sat 10:30am-11pm, Sun 11:30am-10pm

Phone: +44 161 819 1966

Internet: [www.tampopo.co.uk](http://www.tampopo.co.uk)

Email: [info@tampopo.co.uk](mailto:info@tampopo.co.uk)

More Info: Tampopo has four locations in Manchester, including one at Corn Exchange

### Evuna



This fine Spanish restaurant and wine bar is situated in the heart of Manchester, offering fine à la carte dining. Evuna also offer a wine

merchant service where you may take your favourite wines home by the bottle or case.

Photo: naito29 / Shutterstock.com

Address: 277-279 Deansgate, Manchester

Opening hours: Mon-Sat noon-11pm, Sun noon-9pm

Phone: +44 161 819 2752

Internet: [evuna.com](http://evuna.com)

Email: [enquiries@evuna.com](mailto:enquiries@evuna.com)

More Info: You can also visit Evuna's Northern Quarter branch

## CAFES



Marketing Manchester

Manchester has historically been overrun with big chain coffee shops, but a new wave of independent, high-quality, and often quirky cafes and tea houses has been taking over the city, offering more diverse alternatives and more original products. Give these cafes a try, support local entrepreneurs, and while you're at it, enjoy a truly delicious cup of coffee.

### Sugar Junction



Sugar Junction was created out of a love for all things vintage, baking, and wholesome food. The company was started by a mother-daughter team

that strives to provide high-quality food with great service in a comfortable environment. They serve home-baked cakes and about 25 different types of tea.

Photo: Africa Studio / Shutterstock.com

Address: 60 Tib Street, Manchester

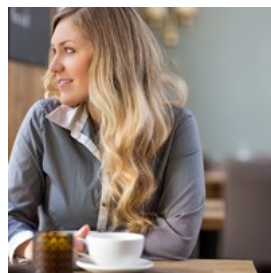
Opening hours: Daily 9am-6pm

Phone: +44 161 839 4753

Internet: [www.sugarjunction.co.uk](http://www.sugarjunction.co.uk)

Email: [sugarjunctionmcr@gmail.com](mailto:sugarjunctionmcr@gmail.com)

### Takk



Iceland-inspired Takk is an artisan coffee house and great hipster hangout. They have a passion for good food and coffee, using specialist dairy, meat and vegetable producers and preparing some of the best coffee in town.

Photo: Tyler Olson / Shutterstock.com

Address: 6 Tariff Street, Manchester

Opening hours: Mon-Fri 9am-4pm, Sat & Sun 10am-4pm

Internet: [takkmcr.com](http://takkmcr.com)

Email: [hello@takkmcr.com](mailto:hello@takkmcr.com)

### Annies



Located just off St Ann's Square on Old Bank Street, Annies is tucked away from the hustle and bustle, and the interior reflects just that with its

cosy feel, wooden panelling, and comfy armchairs designed to make you feel right at home.

Head chef Richard Moore has reflected this cosy British feel in his menu. To start, diners can choose from the likes of Bury Black Pudding Spring Rolls, Potted Ham Hock, and Scallops. For mains, there's Fish, Chips & Mushy Peas, Braised Lamb Shank, and Annies Sausage & Mash. There's also a delicious pie menu including 3 Cheese & Onion Pie, Fish Pie and Steak & Ale Pie.

Annies also serves Afternoon Tea, Champagne Tea, Traditional Cream Tea and a daily lunch menu, as well as morning coffee and pastries.

Photo: Annies Manchester/Marketing Manchester

Address: 5 Old Bank Street, Manchester



Opening hours: Mon-Sat 10am-7pm, Sun 10am-5pm  
Phone: +44 161 839 4423  
Internet: [www.anniesmanchester.co.uk](http://www.anniesmanchester.co.uk)  
More Info: Located in the Royal Exchange Theatre

### Tariff & Dale



To keep the original features in place, the tradesmen entrance was made the front door, a glorious lift shaft became a cosy booth, the loading bay is a private drinking space, and the hydraulic fabric press takes pride of place in the entrance way.

The spacious ground floor bar serves high-quality drinks of all descriptions. A carefully curated list of cocktails takes nine classics and creates three versions of each — one classic and two more individual twists on the original, invented by the bar team.

Photo: Tariff & Dale/Marketing Manchester  
Address: 2 Tariff Street, Manchester  
Opening hours: Mon-Thu noon-midnight, Fri & Sat noon-2am, Sun noon-10pm  
Phone: +44 161 710 2233  
Internet: [www.instagram.com/tariffdale](https://www.instagram.com/tariffdale)  
Email: [hello@tariffanddale.com](mailto:hello@tariffanddale.com)

### Hey Little Cupcake!



Be sure to make a beeline for Hey Little Cupcake!, which is tucked away along the leafy walkway connecting Hardman Street to Atkinson Street in Manchester's super-chic Spinningfields.

Scrumptious signature flavours such as the red velvet, hazelnut cookie, and Victoria sandwich cupcakes neatly line the counter. Try the

seasonal specials, ooey-goey brownies, mouth-watering slabs of rainbow cake, cute cake pops, and delicious illy coffee. Teapigs is also served here, the perfect complement to your treat of choice.

For those in search of something a little larger, the talented team of bakers can whip up layer cakes and giant cupcakes to order, which can be personalised to suit any occasion and taste and are a fantastic alternative to regular cupcakes.

Photo: Hey Little Cupcake  
Address: 2 Hardman Street, Manchester  
Opening hours: Wed-Sat 10am-4pm  
Phone: +44 161 832 0260  
Internet: [heylittlecupcakeshop.uk](http://heylittlecupcakeshop.uk)  
Email: [hello@heylittlecupcake.co.uk](mailto:hello@heylittlecupcake.co.uk)

### BARS & NIGHTLIFE



Marketing Manchester

Manchester boasts one of the UK's strongest and most diverse nightlife scenes, offering plenty of alternatives for drinking, partying, and catching world-class concerts and performances. Hacienda was once perhaps Europe's most famous club (back in the 'Madchester' days), and though it is no longer in operation, the adventurous spirit of the city's nightlife remains intact in the numerous venues in the Northern Quarter, Castlefield, and Gay Village.

Here's a list of the best bars and nightclubs for a

fun night out in Manchester:

### BrewDog Manchester



BrewDog is a large chain of pubs with tons of personality. They boast that they brew "uncompromising, bold and irreverent" beer, as a

form of "rebellion against faceless corporate bureaucracy and the bland pathetic beer they industrially produce." With that sales pitch, you know you're in for something special at BrewDog.

Photo: mdurson / Shutterstock.com

Address: 35 Peter Street, Manchester

Opening hours: Mon-Wed noon-11pm, Thu noon-1am, Fri noon-2am, Sat 11am-2am, Sun 11am-11pm

Phone: +44 161 832 1922

Internet: [www.brewdog.com/uk/brewdog-manchester](http://www.brewdog.com/uk/brewdog-manchester)

Email: [manchesterbar@brewdog.com](mailto:manchesterbar@brewdog.com)

### Hard Rock Cafe



Located in the city centre, the UK's largest Hard Rock serves what can only be described as "The Official Food of Rock", generous drinks and an awe-inspiring collection of rock memorabilia.

Visit Hard Rock Cafe Manchester for a family-friendly dining experience that truly rocks! They're conveniently situated within The Printworks entertainment complex, close to the Arndale Shopping Centre and opposite the National Football Museum, so drop in and see how they can rock your world!

The venue has an awe-inspiring collection of

unique rock memorabilia, with priceless pieces from The Beatles, Oasis and Elvis adorning the walls. Their Rock Shop stocks a wide range of official Hard Rock Cafe Manchester merchandise from T-shirts to glassware and umbrellas for you to buy as a memento of your visit to our beautiful city.

Photo: Hard Rock/Marketing Manchester

Address: The Printworks, Manchester

Opening hours: Sun-Thu noon-10pm, Fri noon-11pm, Sat 11am-11pm

Phone: +44 161 831 6700

Internet: [www.hardrockcafe.com/location/manchester/](http://www.hardrockcafe.com/location/manchester/)

Email: [manchester\\_social@hardrock.com](mailto:manchester_social@hardrock.com)

### Manchester235



Manchester235 is the North West's premier entertainment and gaming destination. Located in the Great Northern Warehouse, this

spectacular Vegas-style casino offers an unrivalled evening of entertainment boasting two restaurants, multiple floors of gaming and a glamorous cocktail bar

A vibrant casino, Manchester235 exudes a constant buzz about the place, with its slot machines, electronic casino games, gaming tables and poker.

The Poker Lounge is a dedicated Poker space with an electric atmosphere. It is home to the best cash games in the North West 7 days a week and 24 hours at weekends. There are also a variety of weekly scheduled tournaments.

James Martin Manchester located on the top floor of the venue features the simple, sensational, seasonal cuisine of celebrity chef

James Martin. This is where you will find the very best in modern British food, starring fresh, locally sourced ingredients.

Photo: Krzysztof Hepner/unsplash

Address: The Great Northern, 2 Watson Street, Manchester

Opening hours: Daily noon-6am

Phone: +44 161 820 1941

Internet: [www.manchester235.com](http://www.manchester235.com)

Email: [info@manchester235.com](mailto:info@manchester235.com)

### Band on the Wall



Band On The Wall has been one of the cornerstones of Manchester's music scene for the greater part of the last century.

Occupying a grand old Victorian pub, it was at the centre of Manchester's punk scene in the late 1970s where Buzzcocks, The Fall and Joy Division first played. Since then, it has played host to many internationally acclaimed artists including Mica Paris, Bjork, Art Blakey, Carleen Anderson, Simply Red and countless others. It also has a global reputation for showcasing a vast array of accomplished and respected artists from around the world. In doing so, it is internationally known as a venue that promotes equality and diversity through music. This unique and pioneering programme of music has thrilled hundreds of thousands of people over the years.

The venue re-opened after a complete makeover in 2009 with state-of the art facilities which includes a new public space, The Picturehouse is adjacent to the venue and located in a Grade 2 Listed building that was a cinema in the early 1900s. It serves a selection of food and drinks

and is the perfect place to meet friends before a concert. The Picturehouse also houses the venue's box office where tickets can be purchased or collected for concerts at the venue.

Photo: Band on the Wall/Marketing Manchester

Address: 25 Swan Street, Northern Quarter, Manchester

Opening hours: Mon & Tue 5pm-midnight, Wed-Fri

5pm-2am, Sat noon-3am, Sun 4pm-midnight

Phone: +44 161 834 1786

Internet: [bandonthewall.org](http://bandonthewall.org)

### The Deaf Institute



The Deaf Institute is an independent fun loving bar and venue, spread across 3 floors, with 3 bars, a kitchen and a roof terrace. Housed in a historic Manchester building originally built in 1878 as The Deaf Institute, the building was derelict when they first got their hands on it and they have refurbished it back to something they hope approaches its original glory. Located just off the bustling Oxford Road, the venue is based in the heart of the Manchester Metropolitan University Campus. In the main bar they have big sharing tables and leather booths, expect fresh and tasty food, a sweetie shop inspired cocktail list, frozen cocktails, local ales and craft beers served up to a rock 'n roll sound track.

The music hall on the first floor hosts live gigs, comedy and club nights in a ballroom under a massive mirror ball, with velvet curtains, a domed ceiling, tiered seating and parrots on the wall.

The Deaf Institute have been lucky enough to see a solid procession of world class talent on their humble little stage over the years, with some of today's biggest names in music gracing the stage



in the early stages of their career. The basement bar is a dandyish den perfect for parties or club nights.

Photo: The Deaf Institute/Marketing Manchester

Address: 135 Grosvenor Street, Manchester

Opening hours: Wed-Sun 4pm-10pm, Mon & Tue closed

Internet: [www.thedeafinstitute.co.uk](http://www.thedeafinstitute.co.uk)

### Flight Club



Flight Club is the home of Social Darts. They've taken the traditional game of darts and supercharged it, developing fast and exciting multiplayer games to create a social experience like no other for groups of 3 to 300.

Flight Club Manchester's décor spectacularly combines the heritage of darts, the pub and the fairground, with a unique twist. Whether you're looking for a new lunch spot, hosting a team social or just fancy catching up over a cocktail at the bar – this amazing space on King Street is perfect for any occasion.

With a range of private and semi-private event spaces available to book, a beautiful bar and a mouth-watering menu of sharing plates, pizza paddles and delicious signature slushy cocktails – it's got everything you need to kick start an unforgettable social adventure.

Photo: Flight Club

Address: Ship Canal House, 98 King Street, Manchester

Opening hours: Sun-Thu 11:30am-midnight, Fri

11:30am-1am, Sat 11am-1am

Phone: +44 161 537 7250

Internet: [flightclubdarts.com/location-king-street](http://flightclubdarts.com/location-king-street)

### Gorilla



Gorilla is a bar, kitchen, live venue and club space under the railway tracks on Whitworth Street West. Choose from award winning royal breakfasts

and Sunday roasts, chargrilled burgers and fancy sandwiches. There's a grilled selection, too. Choices include steak on the rib, spatch-cooked chicken with lemon and fresh herbs, halloumi and chicken kebabs. And, like all of Trof's venues, they are served by their own in-house bakery, which means that the sourdough, brioche and maple and pecan muffins couldn't be any fresher.

On the drinks list, they have a full menu of cocktails and shakes, alongside the best in bottled and canned beers, fine wines and fair-trade coffees. And there's a second bar to explore too. The mezzanine bar at Gorilla hosts a Gin Parlour, a relaxed and sophisticated den dedicated to the consumption of glorious gin.

Photo: Gorilla Manchester/Marketing Manchester

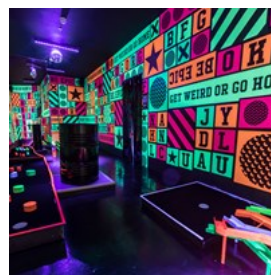
Address: Whitworth Street West, Manchester

Opening hours: Mon-Fri 11am-9pm, Sat & Sun 10am-9pm

Phone: +44 161 425 0870

Internet: [www.thisisgorilla.com](http://www.thisisgorilla.com)

### Junkyard Golf



Junkyard Golf Club is home of crazy golf, booze and bad puns. Get excited on three mashed up 9-hole crazy golf courses created from pre-loved

and reclaimed random shizzle. Groups can putt their way through all sorts of bizarre holes; think UV slides, UFC bear cages, a hip hop farm and a tree house bar!

Photo: Junkyard Golf/Marketing Manchester

Address: First Street, Whitworth Street, Manchester

Opening hours: [www.junkyardgolfclub.co.uk/manchester](http://www.junkyardgolfclub.co.uk/manchester)

Internet: [www.visitmanchester.com/things-to-see-and-do/junkyard-golf-club-p317721](http://www.visitmanchester.com/things-to-see-and-do/junkyard-golf-club-p317721)

### Peveril of The Peak



It is said that pub culture is under threat in England, but this does not apply to Manchester. One of the best pubs is to be found in a green tiled building surrounded by modern office buildings: the 200-year-old Peveril of the Peak.

Photo: David Dixon/cc by-sa 2.0/geograph.org.uk (upscaled)

Address: 127 Great Bridgewater Street, Manchester

Public Transport: Oxford road train station

Phone: +44 161 236 6364

Internet:

[whatpub.com/pubs/tra/3586/peveril-of-the-peak-manchester](http://whatpub.com/pubs/tra/3586/peveril-of-the-peak-manchester)

### The Comedy Store



Take part in the prodigious northern comedy scene with a visit to the Manchester Comedy Store. You are guaranteed to have a good laugh, and may even get the chance to catch a nationally or internationally renowned comedian in action.

Photo: aerogondo2 / Shutterstock.com

Address: Arches 3 & 4 Deansgate Locks, Whitworth Street West, Manchester

Public Transport: Deansgate train station

Phone: +44 161 839 9595

Internet: [manchester.thecomedystore.co.uk](http://manchester.thecomedystore.co.uk)

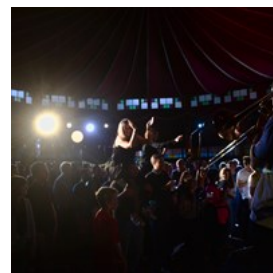
## ACTIVITIES



Marketing Manchester

Manchester is bursting with activities for families and adults. From walking trails to urban crazy golf and escape rooms to adventure courses, there's plenty to keep you entertained in Manchester.

### Manchester River Cruises



Manchester River Cruises run regular sightseeing trips from Salford Quays on board the Dutch built 'Princess Katherine'. From the 50 minute

Quays Adventures trips to a 4 1/2 hour expedition to Ellesmere Port, Manchester River Cruises provide the ultimate way to enjoy the historic Manchester Ship Canal and River Irwell.

Quays Adventures run regularly throughout the school holidays departing and returning to Salford Quays every hour.

Photo: Manchester River Cruises/Marketing Manchester

Opening hours: April 1st to September 30th

Phone: +44 161 960 0534

Internet: [manchesterrivercruises.com](http://manchesterrivercruises.com)

Email: [info@manchesterrivercruises.com](mailto:info@manchesterrivercruises.com)

### Scranchester Food Tours



A truly immersive food tour of Manchester. Your local guide will take you on a multi-stop tour across the city offering edible insights into food history and culture long the way. The tour will include at least eight stops (adding up to a huge meal, come hungry!) revealing why the city's food and drink scene is booming.

Scranchester Tours firmly believe one of the best ways to learn about a city is through its food and drink, as well allowing guests the chance to sample great food from some of the city's hidden gems the tour reveals the hidden histories behind that food; from Victorian plant hunters and the Italian ice cream families of Little Italy to the birth of vegetarianism.

Photo: Scranchester Food Tour/Marketing Manchester

Phone: +44 7824 617650

Internet: [scranchestertours.com](http://scranchestertours.com)

Email: [scranchestertours@gmail.com](mailto:scranchestertours@gmail.com)

### Free Walking Tour Manchester — Si Manchester



Everyone should be able to take a guided tour for a price they feel it is worth. Discover hidden corners of Manchester and visit the main tourist attractions in one fell swoop. Tours start almost every morning. Tips for your guide are welcome, but not obligatory.

Photo: Si Manchester/Marketing Manchester

Address: Outside the Central Library, St Peter's Square, Manchester

Phone: +44 7746 943389

Internet: [www.freetour.com/manchester/tour-gratis-en-espan](http://www.freetour.com/manchester/tour-gratis-en-espan)

ol-si-manchester

More Info: Spanish language tours are offered, too

### Skyliner Street Art Tour



Join Skyliner in learning about the creation of the Northern Quarter as it's known today, find out the major names behind some of the area's oldest street

art and those behind the most recent installations such as the Cities of Hope exhibition. Skyliner tours identify lesser known heritage sites and highlight how modern art movements in Manchester hope to continue to drive creativity within this very unique neighbourhood.

The street art tours are the only tours of their kind in the city. They have been extensively researched through interviews with artists and they explore, not only the street art but also housing and social issues. The tours venture in Ancoats over the invisible wall known as Great Ancoats Street and investigate how art and architects worked together to create a cohesive space for living in.

Photo: Skyliner Tour/Marketing Manchester

Internet: [www.theskyliner.org/tours](http://www.theskyliner.org/tours)

Email: [theskyliner.org@gmail.com](mailto:theskyliner.org@gmail.com)

More Info: Skyliner tours are run by Hayley Flynn and are family friendly.

### Breakout Escape Rooms



Breakout is a live escape room game — a group of friends, family or colleagues are locked in a room for an hour and have to solve a series of puzzles, tasks, riddles, and games in order to



escape.

With 60 minutes on the clock, players need to search high and low for clues and codes, solve problems, and most importantly work as a team if they want to win. These are purely mental challenges, and there are no strenuous physical activities involved in the games.

Each of our rooms is carefully designed to ensure maximum entertainment value and with a variety of different themes and difficulty levels for you to choose from, there's something for everyone. If you're looking for a chance to challenge your brain, encourage team-building, or just pass an hour doing something a bit different, then this is the activity for you!

Photo: Breakout Manchester/Marketing Manchester

Phone: +44 161 236 5875

Internet: [breakoutmanchester.com](http://breakoutmanchester.com)

More Info: Breakout has two locations, 51 Church Street & 87 Newton Street, within short walking distance from one another

### Treetop Manchester



Treetop Manchester is a truly unique family attraction that provides a woodland adventure like no other. Visitors can adventure in the high

trees at Treetop Nets and Treetop Trek, set in the beautiful woodland for Heaton Park. Open all year round and accessible to all ages and abilities, they provide a unique environment for families to be active outdoors and have fun together.

Photo: Marketing Manchester

Address: Heaton Park, St Margaret's Road, Manchester

Phone: +44 15394 47186

Internet: [www.treetoptrek.co.uk/manchester](http://www.treetoptrek.co.uk/manchester)

### Vegetarian Society Cookery School



Looking for something new and exciting to fill your weekend? At the Vegetarian Society Cookery School, you'll find a range of unique cookery experiences perfect for when you want to do something different.

Experienced and friendly tutors will teach you the ins and outs of modern veggie and vegan cooking; from a whole range of international cuisines, to vegan classes and showing off the latest trends in the culinary world.

Photo: Marketing Manchester

Address: Parkdale, Dunham Road, Altrincham, Cheshire

Phone: +44 161 925 2000

Internet:

[vegsoc.org/product-category/cookery-school/all-courses](http://vegsoc.org/product-category/cookery-school/all-courses)

Email: [cookery@vegsoc.org](mailto:cookery@vegsoc.org)

### Craft Beer Tour Manchester



Join a craft beer adventure to tour Manchester and sample the best local produce. Visit a range of microbreweries and craft

beer houses enjoying at least ten craft beers (around 1/3 pints each). Each venue will include a guided tasting session led by a resident expert, and one of our friendly guides will lead you around the city, uncovering some of the hidden gems of Manchester.

Photo: Marketing Manchester

Address: International House, 61 Moseley Street, Manchester

Internet: [craftbeertourmanchester.co.uk](http://craftbeertourmanchester.co.uk)

### Free Manchester Walking Tours



This is an entertaining and comprehensive tour about what makes Manchester the city it is today. You get to visit the best-known attractions as well as the lesser-known quirks. The free walking tour is the best way to learn about the city's history and culture, orientate yourself, meet new people and learn insider tips.

Photo: Marketing Manchester

Address: Alan Turing Statue, Sackville Gardens, Manchester

Opening hours: Daily 11am

Phone: +44 7478 277293

Internet: [www.freemanchesterwalkingtours.com](http://www.freemanchesterwalkingtours.com)

More Info: No booking required

## ART & CULTURE



Marketing Manchester

From music and art to theatre and architecture, Manchester's culture is known for its energy and excellence. The UNESCO City of Literature is awash with new and refurbished cultural venues, and Manchester is preparing for the opening of The Factory, the new permanent home for the Manchester International Festival.

### Whitworth Art Gallery



After the Whitworth's stunning £15 million development, the gallery now is fully integrated into the park it calls home. An art garden by Sarah Price, sculpture terrace and orchard garden, alongside new spaces that embrace the park, such as a landscape gallery and a café in the trees, all reflect its beautiful setting.

With double the room, and with exhibitions of new work by some of the world's leading artists alongside eclectic exhibitions drawn from its internationally rated collection of British watercolours, textiles, wallpapers and fine art, the Whitworth has become one of the city's must-see cultural destinations.

Photo: Shahid Khan / Shutterstock.com

Address: Oxford Road, Manchester

Public Transport: 1 mile from Oxford Road station

Opening hours: Tue, Wed & Fri-Sun 10am-5pm; Thu 10am-9pm, Mon closed

Phone: +44 161 275 7450

Internet: [www.whitworth.manchester.ac.uk](http://www.whitworth.manchester.ac.uk)

Email: [whitworth@manchester.ac.uk](mailto:whitworth@manchester.ac.uk)

### Science & Industry Museum



The Science and Industry Museum in Manchester is a place full of amazing objects and world changing ideas. Visit the world's oldest surviving passenger railway station and the world's first railway warehouse, built in 1830. Find out how our revolutionary railroad changed Manchester and the world forever. Be inspired by the wonder of science, enjoy live demonstrations of historic working machinery, take part in fun science shows and lots more.

Photo: Marketing Manchester

Address: Liverpool Road, Castlefield, Manchester, Greater Manchester

Public Transport: Rail: the nearest train station is Deansgate (¼ mile away) and is approximately 10 minutes walk away.

Bus: The free Metroshuttle bus (Route 1) stops outside of the Museum. Tram: The nearest Metrolink tram stop is Deansgate-Castlefield (¼ mile) and is approximately 10 minutes walks away.

Opening hours: Daily 10am–5pm

Phone: +44 330 058 0058

Internet: [www.scienceandindustrymuseum.org.uk](http://www.scienceandindustrymuseum.org.uk)

### Stoller Hall



The Stoller Hall offers an unrivalled acoustic and a stunning visual backdrop for live music, conferencing and performance. Based

within Chetham's School of Music just metres from Victoria Station, it offers a completely new audience experience in the heart of the Medieval Quarter.

The Stoller Hall's public performance programme combines classical and contemporary performance, chamber music and recitals with comedy, spoken word and debate. There's something for families, musicians, and adults who want to do more than just watch. There's jazz, world music and masterclasses, and there are inspiring performances by the students of Chetham's — the only specialist music school in the north of England. From free daily Lunchtime Concerts throughout the school term to full Symphony Orchestra and Chorus, they bring the freshest new musical talents to the city's newest stage.

Photo: Marketing Manchester

Address: Long Millgate, Manchester, Greater Manchester, M3 1SB

Phone: +44 333 130 0967

Internet: [stollerhall.com](http://stollerhall.com)

### HOME Manchester



From gallery to screen via cafe bar and bookshop, HOME redefines the contemporary arts centre, creating a space where

ideas, hopes and moments of wonder ricochet off walls and lodge themselves in the headspace of audiences old and new. Manchester's new centre for theatre, film and visual art has opened its doors to great fanfare and acclaim in 2015. Formed by the merger of the city's best-loved arts organizations, Cornerhouse and the Library Theatre Company, there's something for everyone here.

Photo: Marketing Manchester

Address: Tony Wilson Place, Manchester

Phone: +44 161 200 1500

Internet: [homemcr.org](http://homemcr.org)

### Royal Exchange Theatre



Manchester's Royal Exchange Theatre Company transforms the way people see theatre, each other and the world around them. Its historic

building, was taken over by artists in 1976.

Today it is an award-winning cultural charity that produces new theatre in-the-round, in communities, on the road and online.

Their niche is brand new drama and reinvigorated classics, the boldest artists and a company of highly skilled makers — all brought together to trade ideas and experiences with the people of Greater Manchester (and beyond).



The Theatre is a spectacular seven-sided, glass-walled capsule, suspended in the centre of the historic Cotton Exchange. This unique design means all seats are less than nine metres between you and the circular stage.

Photo: Marketing Manchester  
Address: St Ann's Square, Manchester  
Phone: +44 161 833 9833  
Internet: [www.royalexchange.co.uk](http://www.royalexchange.co.uk)  
Email: [box.office@royalexchange.co.uk](mailto:box.office@royalexchange.co.uk)

### Castlefield Gallery



Founded in 1984, Castlefield Gallery is at the forefront of supporting emerging artists and new art practice in the UK.

Beyond displaying a diverse range of contemporary art across up to seven temporary exhibitions per year and presenting offsite projects, the gallery runs New Art Spaces (pop-up project spaces for artists and creatives across Greater Manchester) and CG Associates (a professional development scheme for artists, writers and independent curators).

Photo: Marketing Manchester  
Address: 2 Hewitt Street, Knott Mill, Manchester  
Opening hours: Wed-Sun noon-5:30pm, Mon & Tue closed  
Phone: +44 161 832 8034  
Internet: [www.castlefieldgallery.co.uk](http://www.castlefieldgallery.co.uk)

### Manchester Central Library



This iconic city venue, designed by architect E. Vincent Harris, was first opened in 1934. Following a £50m refurbishment in 2010, taking four years, the Grade II listed building has been brought into the 21st century by

combining historic features with cutting-edge design. Take a look at previously hidden heritage spaces and the magnificent Wolfson Reading Room.

Photo: Marketing Manchester  
Address: St Peters Square, Manchester  
Phone: +44 161 234 1983  
Internet: [www.visitmanchester.com/things-to-see-and-do/central-library-p1551](http://www.visitmanchester.com/things-to-see-and-do/central-library-p1551)

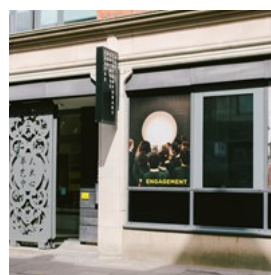
### Portland Basin Museum



In the attractive, waterside setting of Portland Basin, the newly refurbished Heritage centre celebrates the people, events and industries that have shaped the history of Tameside over the past two hundred years.

Photo: Marketing Manchester  
Address: Portland Place, Ashton-under-Lyne, Greater Manchester  
Opening hours: Tue-Sun 10am-4pm, Mon closed  
Phone: +44 161 342 5480  
Internet: [www.tameside.gov.uk/museumsgalleries/portland](http://www.tameside.gov.uk/museumsgalleries/portland)  
Email: [portland.basin@tameside.gov.uk](mailto:portland.basin@tameside.gov.uk)

### esea contemporary



esea contemporary is UK's unique non-profit art centre spotlighting artists influenced by East and Southeast Asian cultures. Nestled in Manchester, a city with a populous East Asian demographic, esea contemporary has evolved from a community arts festival in 1986 to a dynamic hub for cultural exchange in the art scene. More than a gallery, it hosts a variety of initiatives from exhibitions and commissions to residencies and public events, all while championing

creativity, compassion and community.

Photo: Marketing Manchester

Address: Smithfield Market Hall, 13 Thomas Street, Northern Quarter, Manchester

Opening hours: Mon-Fri 10am-5pm, Sat & Sun closed

Phone: +44 161 832 7271

Internet: [www.eseacontemporary.org](http://www.eseacontemporary.org)

More Info: Formerly known as the Centre for Chinese Contemporary Art

### Working Class Movement Library



The Working Class Movement Library, built on Ruth and Edmund Frow's personal collection, archives over two centuries of

working-class campaigns for social and political reform. The library hosts thousands of books, pamphlets and archives alongside a rich array of visual media — everything to shed light on the stories of change-makers, from Peterloo to the 'right to roam' ramblers. It also features tales of WWI conscientious objectors, volunteers from the Spanish Civil War, and the 10,000 Salfordians who demonstrated during the last Great Depression. Free to all, the library welcomes visitors for individual or group tours by appointment.

Photo: Marketing Manchester

Address: Jubilee House, 51 The Crescent, Salford, Greater Manchester

Phone: +44 161 736 3601

Internet: [www.wcml.org.uk](http://www.wcml.org.uk)

Email: [enquiries@wcml.org.uk](mailto:enquiries@wcml.org.uk)

### Contact Theatre



Contact is Manchester's provocative and innovative performance venue situated in the heart of the city's busy Oxford Road Corridor.

The theatre is the national contemporary arts organisation that places young people's decision-making and leadership at the heart of everything. Youngsters aged 13+ work alongside its staff in deciding its programme of theatre, dance, spoken word, music, comedy and visual art. The result is a remarkable, diverse and exciting programme for everyone.

The venue's distinctive towers make it one of Manchester's most unique architectural gems and the interior includes a 300 seat main auditorium, a 70 seat flexible studio, rehearsal and gallery spaces, and a cafe bar.

Photo: Marketing Manchester

Address: Oxford Road, Manchester

Internet: [contactmcr.com](http://contactmcr.com)

More Info: Only a short walk from both Manchester Museum and The Whitworth.

### Gallery Oldham



Gallery Oldham offers a variety of exhibitions and activities that cater to all ages. Showcasing both Oldham's diverse collections and new

commissions, the gallery's current and upcoming exhibitions fuse international works, touring exhibits, and community-produced pieces.

Besides its vibrant displays, Gallery Oldham also offers regular talks, tours, art and craft workshops, school collaborations, and artist

residencies. The permanent exhibit called Oldham Stories showcases eclectic artefacts and specimens. The gallery also displays work from notable local and British artists, including Helen Bradley, William Stott, L. S. Lowry and John William Waterhouse, as well as an ever-growing collection of studio pottery.

Photo: Marketing Manchester

Address: Oldham Cultural Quarter, 35 Greaves Street, Oldham

Public Transport: By Bus: The gallery is a few minutes' walk from Oldham bus station. There is also a bus stop in front of the gallery on Union Street. If you are travelling from Manchester, bus routes 83 and 180 run regularly to Oldham from the Northern Quarter.

Opening hours: Tue-Sat 10am-5pm, Sun & Mon closed

Phone: +44 161 770 4653

Internet: galleryoldham.org.uk

### Elizabeth Gaskell's House



For over 150 years, this house has been associated with its most famous resident: the novelist, Elizabeth Gaskell, who lived here

from 1850 to 1865. Thanks to a major £2.5m project, the restored House is now open to the public.

Visit the house museum to find out about Elizabeth and William's work, explore the lives of their daughters and servants and discover the Manchester that the Gaskells knew.

Knowledgeable volunteers will show you around and will invite you to take a seat in one of the four Victorian period rooms and learn about the painstaking restoration process. See where Elizabeth would have written her famous novels and stroll around the beautiful recreated gardens imagining yourself in Victorian

Manchester.

The house also has two exhibitions and a tea room in the old kitchen and servant's hall, serving up delicious cake and hot drinks in dainty china cups and saucers.

Photo: Marketing Manchester

Address: 84 Plymouth Grove, Manchester

Opening hours: Wed, Thu & Sun 11am-4:30pm

Phone: +44 161 273 2215

Internet: elizabethgaskellhouse.co.uk

### The Lowry



The Lowry is a magnificent building, set alongside Salford Quays. Inside, you'll find three stunning theatres, as well as galleries showcasing

artists of local, national and international renown.

The Lyric (the largest stage in England outside London) and the more intimate Quays host a huge variety of performances, including West End musicals, the very best in drama, live bands, famous comedians, plus world class dance and opera. From Peter Kay to the Kirov Ballet, Morrissey to Alan Bennett and much more.

The Lowry Galleries showcase changing exhibitions by one of Britain's best loved artists, LS Lowry, as well as paintings, sculpture and photography from around the world. There's always something new and refreshing to see in the galleries. Gallery entry is free.

Photo: Shahid Khan / Shutterstock.com

Address: Pier 8, Salford Quays, Manchester

Opening hours: Galleries: Tue-Fri 11am-5pm, Sat & Sun 10am-5pm, Mon closed

Internet: thelowry.com



### People's History Museum



The People's History Museum is a national museum charting the history of the struggle for equality and democracy in the UK. Meet the

revolutionaries, reformers, workers, voters and citizens who fought our battle for the ballot. Gather amongst their magnificent banners and discover how time off was won (and spent).

Enjoy the main galleries, Changing Exhibition Gallery and Community Gallery, along with interactives and activities for visitors of all ages. There's hands-on stuff in every gallery and regular activities especially for children. Browse the shop for unique books and gifts and round off your day with a bite to eat in the museum's on site cafe bar The Left Bank.

The museum also offers a Learning programme for early years to adult learners, and houses the Labour History Archive & Study Centre, Textile Conservation Studio and venue hire facilities.

Photo: Iakov Filimonov / Shutterstock.com

Address: Left Bank Spinningfields, Manchester

Opening hours: Mon & Wed-Sun 10am-5pm; Tue closed

Phone: +44 161 838 9190

Internet: [phm.org.uk](http://phm.org.uk)

Email: [info@phm.org.uk](mailto:info@phm.org.uk)

### Manchester Art Gallery



The Manchester Art Gallery is one of the country's finest art museums, boasting fantastic collections that mix the very best of

contemporary art with long-standing artistic traditions, spanning six centuries. The museum

curators acknowledge that most of the pieces in their collection represent the point of view of the "old white men", and they try to course correct with more alternative temporary exhibitions.

Photo: Alastair Wallace / Shutterstock.com

Address: 81 Princess Street, Manchester

Opening hours: Tue-Sun 10am-5pm, Mon closed

Phone: +44 161 235 8888

Internet: [manchesterartgallery.org](http://manchesterartgallery.org)

Email: [manchesterartgallery@manchester.gov.uk](mailto:manchesterartgallery@manchester.gov.uk)

### Manchester Museum



The collections at the Manchester Museum number almost six million specimens and objects of anthropological and natural history interest. It

is also home to one of the largest and most important collections of ancient Egyptian artefacts in the United Kingdom. It even has a Botany collection, live animals at the Vivarium and an Archaeology collection.

Photo: Alastair Wallace / Shutterstock.com

Address: The University of Manchester, Oxford Road, Manchester

Opening hours: Tue, Thu & Fri 10am-5pm; Wed 10am-9pm;

Sat 8am-5pm; Sun 10am-5pm; Mon closed

Phone: +44 161 275 2648

Internet: [www.museum.manchester.ac.uk](http://www.museum.manchester.ac.uk)

Email: [museum@manchester.ac.uk](mailto:museum@manchester.ac.uk)

## SHOPPING



*Marketing Manchester*

Manchester has become northern England's shopping capital, offering variety, quality, and bargains. From large shopping centres like Manchester Arndale and the Trafford Centre to the pedestrian boutique districts and markets dotting the city to the unique items found at the Manchester Craft and Design Centre, shoppers will be spoilt for choice with everything from designer fashion to local handicrafts on offer.

### Manchester Arndale



When it comes to shopping, it has to be Manchester Arndale. Find a huge selection of exciting shops from the leading high street names such as Apple, Next, River Island, Topshop and Wallis to lots of smaller, stylish specialists and food outlets - and all under one roof.

Manchester Arndale is the Manchester city centre shopping centre. Located close to bus, tram and train networks it's easy to get to and, more importantly, easy to get home from when you've got mountains of shopping to carry home.

Photo: Manchester Arndale/Marketing Manchester

Address: Market Street, Manchester

Opening hours: Mon-Sat 9am-8pm, Sun 11:30am-5:30pm

Phone: +44 161 833 9851

Internet: [manchesterarndale.com](http://manchesterarndale.com)

Email: [info@manchesterarndale.com](mailto:info@manchesterarndale.com)

### Northern Quarter



If you are looking for the very latest street fashion, you should head for Oldham Street, the main street in Northern Quarter. It houses shops

like Arc Gallery Store, where many young designers and artists exhibit their wares. Northern Quarter also has many small record shops and interior design shops for people who have an eye for trends. Artisans work at the Manchester Craft Centre in Oak Street. Affleck's Palace, on Church Street, is also worth a visit if you are interested in design. Many of the leading young names in Manchester are brought together in this four-storey building.

Photo: Matthew Hartley/cc by-sa 2.0/Flickr(image cropped)

Internet: [northernquartermanchester.com](http://northernquartermanchester.com)

### Trafford Centre



The Trafford Centre has got everyone's favourite brands and some visitors might not have discovered yet including Selfridges, Stradivarius, Pull & Bear, Victoria's Secret, Primark and Khaadi.

For those who are more of a big day out shopper why not catch the latest blockbuster at ODEON IMAX, go deep underwater at SEA LIFE or explore LEGOLAND® Discovery Centre? Add in Namco Funscape and Laser Quest and visitors will have an action-packed weekend!

And when hunger strikes visitors will be spoilt

for choice with over 60 amazing restaurants including new additions Bill's, Five Guys, LEON and wagamama.

Photo: Trafford Centre/Marketing Manchester

Address: Barton Dock Road, Stretford, Manchester

Opening hours: Mon-Fri 10am-10pm, Sat 10am-9pm, Sun noon-6pm

Phone: +44 161 749 1717

Internet: [traffordcentre.co.uk](http://traffordcentre.co.uk)

Email: [traffordcentre.enquiries@savillspm.co.uk](mailto:traffordcentre.enquiries@savillspm.co.uk)

### Manchester Craft & Design Centre



Manchester Craft and Design Centre is a unique organization comprising 16 retail/studio spaces, an excellent cafe and a rolling programme of

exhibitions from leading national and international makers.

Located in Manchester city centre's Northern Quarter, Manchester Craft and Design Centre is at the hub of a growing innovative and artistic community. It is one of the few places in the UK open to the public where contemporary goods are both individually produced and sold on the premises.

Formerly the Smithfield Victorian fish market and crowned with a huge glass roof, the Centre now houses two floors of shops ranging from jewellery, ceramics and textiles to furniture and clothing design.

Photo: Dave Croker/cc by-sa 2.0/wikimedia (cropped)(image cropped)

Address: 17 Oak Street, Manchester

Opening hours: Mon-Sat 10am-5:30pm, 2nd Sunday of the month 11am-5pm

Phone: +44 161 832 4274

Internet: [www.craftanddesign.com](http://www.craftanddesign.com)

Email: [marketing@craftanddesign.com](mailto:marketing@craftanddesign.com)

### Cheshire Oaks Designer Outlet



Cheshire Oaks was the first and remains the UK's largest Designer Outlet. With a quarter-million square feet of retail space,

comprising of more than 145 boutiques, restaurants and cafés, Cheshire Oaks isn't merely the UK's largest Designer Outlet. The Designer Outlet has a wide range of brands, offering something to suit every taste. Highlights range from athletic labels, like Nike and Adidas, and high-street favourites, like Marks & Spencer and Next, to a selection of iconic fashion brands, including Burberry, Polo, Michael Kors and Hugo Boss.

Photo: Cheshire Oaks/Marketing Manchester

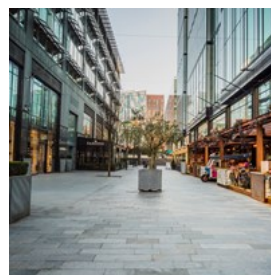
Address: Kinsey Road, Ellesmere Port

Public Transport: By Bus: Cheshire Oaks Designer Outlet is well served by two buses. The number 1 and the X8 operated by Stagecoach run between Chester, Liverpool and Ellesmere Port on a daily basis.

Phone: +44 151 348 5600

Internet: [www.mcarthurglen.com/en/outlets/uk/designer-outlet-cheshire-oaks](http://www.mcarthurglen.com/en/outlets/uk/designer-outlet-cheshire-oaks)

### Spinningfields



One of the city's most vibrant neighbourhoods, Spinningfields is a thriving hub for work, rest and play. Home to some of Manchester's

most popular bars, restaurants and shops, Spinningfields is also the biggest commercial district in the city, housing some of the largest corporations in the North West.

Located on the River Irwell is the neighbourhood of Spinningfields, Leftbank, which encompasses



the some of the best casual dining Manchester has to offer - The Kitchens street food collective, The Dockyard and Indian street kitchen, Scene. Leftbank is a celebration of all things innovative and independent and the go-to alfresco location for food and drink.

Spinningfields is also home to The Avenue, which has an impressive array of flagship stores including Emporio Armani, Mulberry, Flannels and Oliver Sweeney, plus some of the most exciting eateries in the city.

Photo: Marketing Manchester

Address: Hardman Boulevard, Manchester

Internet: [www.visitmanchester.com/things-to-see-and-do/spinningfields-p320561](http://www.visitmanchester.com/things-to-see-and-do/spinningfields-p320561)

### Harvey Nichols



Harvey Nichols Manchester boasts the crème de la crème of what's hot in fashion, food and beauty. With leading luxury fashion brands including Dolce and Gabbana, Christian Louboutin and Givenchy — there's no other place in the city to shop for your new season wardrobe.

Beauty addicts will love the offering spread across two floors of this luxurious store. Brands including Shu Uemura, Shiseido, Crème de la Mer and Bobbi Brown not only have amazing products to buy, they also offer treatments, make up lessons and advice.

Take a break from shopping and indulge at the Second Floor Restaurant, Bar and Brasserie for cocktails, a light lunch, afternoon tea or a gourmet meal. In addition, the Foodmarket offers a selection of the finest food produce from

around the world, along with an extensively stocked Wineshop, perfect for gifts.

Photo: Harvey Nichols/Marketing Manchester

Address: 21 New Cathedral Street, Manchester

Phone: +44 161 828 8888

Internet: [www.harveynichols.com/store/manchester/](http://www.harveynichols.com/store/manchester/)

### Royal Exchange Manchester



Once the hub of the world's cotton trade, The Royal Exchange Manchester is now an eclectic collection of luxury retailers, premium high street brands and best in class independent boutique shops playing a key role in Manchester's thriving shopping and lifestyle culture.

Here you'll find established brands such as Watches of Switzerland, French Connection, Swarovski, Molton Brown and more, along with smaller independent boutique shops including Lanigan & Hulme menswear, Jenny Jones jewellers and Astons of Manchester. Get a classic backpack and a new raincoat from the Swedish outdoor brand Fjallraven.

Situated in the heart of the city looking out onto St Ann's Square, The Royal Exchange Manchester is in close proximity to Manchester Arndale as well as luxury stores such as Selfridges, Harvey Nichols and House of Fraser, with many of Manchester's hotels, restaurants and cafes nearby.

Photo: The Royal Exchange/Marketing Manchester

Address: St Anns Square, Manchester

Phone: +44 161 833 9833

Internet: [www.royalexchange.co.uk](http://www.royalexchange.co.uk)

More Info: The building is also home to the much-loved Royal Exchange Theatre.

### Stockport Market



Opened in 1861 in its current glass and iron form, on a site that has been populated by a market for over 700 years, Stockport Market has over 50 independent businesses selling everything from beer to buttons.

Open 4 days a week, you can explore stalls in the covered Market Hall, experience a variety of food stuffs in the Produce Hall, or take in the fascinating emporium of vintage goods and collectables at 20th Century Stores, providing visitors with a unique shopping experience.

Photo: Stockport Market/Marketing Manchester

Address: Stockport, Greater Manchester

Opening hours: Covered Market Hall & Produce Hall: Tue & Thu-Sat 9am-4:30pm. Open Market: Tue, Fri & Sat 9am-4:30pm

Phone: +44161 474 3523

Internet: [www.stockport.gov.uk/topic/stockport-market-place](http://www.stockport.gov.uk/topic/stockport-market-place)

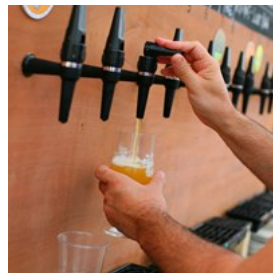
## EVENTS & FESTIVALS



Marketing Manchester

As one of the most vibrant and cosmopolitan cities in the UK, there's always something on in Manchester. With a rolling calendar of events, festivals, exhibitions, concerts and theatre you'll never be stuck for world-class entertainment.

### Manchester Craft Beer Festival (July)



Manchester Craft Beer Festival, Manchester's only city-wide beer festival, allows you to explore Manchester's thriving artisanal beer scene, alongside food, art and music.

Photo: Manchester Beer Week/Marketing Manchester

Address: Depot Mayfield, 11 Baring Street, Manchester

Internet: [manchestercraftbeerfestival.com](http://manchestercraftbeerfestival.com)

### Manchester International Festival (July)



Manchester International Festival (MIF) is the world's first festival of original, new work and special events. The Festival is staged every two years in Manchester.

The first MIF launched in 2007 as an artist-led festival presenting new works from across the spectrum of performing arts, visual arts and popular culture. We've commissioned, produced and presented world premieres by artists as diverse as Björk, Steve McQueen, Robert Wilson, Wayne McGregor, Maxine Peake, The xx, Zaha Hadid Architects, Damon Albarn, Punchdrunk, Elbow and Marina Abramović, among many others.

Photo: Manchester International Festival/Marketing Manchester

Address: Various locations across Manchester

Opening hours: End of June to mid-July

Internet: [factoryinternational.org](http://factoryinternational.org)

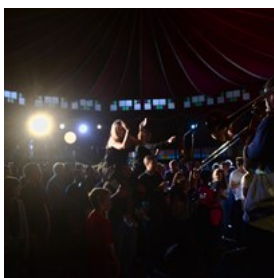
### Manchester Film Festival (March)



Manchester Film Festival is a truly independent film festival, committed and dedicated to sharing great stories from both new and established international and domestic filmmakers from the world of independent cinema.

Photo: Manchester Film Festival/Marketing Manchester  
Address: Odeon Manchester, Great Northern, Manchester, Greater Manchester, M3 4EN  
Internet: [maniff.com](http://maniff.com)

### Manchester Jazz Festival (May)



The award-winning Manchester Jazz Festival (mjf) is back to the city every May. The main festival hub will now run the length of St Ann's

Square to New Cathedral Street with a host of free music stages and bars. As always, gigs will also be staged in venues across the city.

For the first time, mjf have teamed up with Manchester Food and Drink Festival, who will curate an exciting mix of culinary offers along the festival hub.

Photo: Marketing Manchester  
Address: St Anns Square, New Cathedral Street, Manchester  
Phone: +44 161 393 4367  
Internet: [manchesterjazz.com](http://manchesterjazz.com)

### Manchester Pride (August)



Manchester Pride is the charity that runs Manchester's annual LGBTIQA+ celebration, The Manchester Pride Festival. The charity

exists to celebrate queer life, campaign for greater LGBTIQA+ equality and create opportunities for engagement for queer people in Greater Manchester.

The Manchester Pride Big Weekend incorporates The Big Weekend at Manchester's world famous Gay Village, The Manchester Pride Parade on the streets of the City Centre and The Candlelit Vigil in Sackville Park.

Photo: Marketing Manchester  
Internet: [www.manchesterpride.com](http://www.manchesterpride.com)

### Parklife Festival (June)



The much-loved Parklife music festival takes place in Heaton Park every June! Prepare for two days of vibrant energy, showcasing over 200 live acts and DJs from around the world. It's a dance and electronic music extravaganza, but there's also plenty for pop and hip-hop fans to enjoy.

Photo: Marketing Manchester  
Address: Heaton Park, Prestwich, Manchester  
Internet: [parklife.uk.com](http://parklife.uk.com)

### Just So Festival (August)



With a love of stories and childhood escapades at its heart, Just So Festival enables families to step out of their day to day lives and into a

wonderland of world class literature, arts, theatre, dance, music, comedy and creative pursuits together. Underpinned by the Carnival of the Animals, the most bonkers competition in the land, it takes audiences (from bumps to great grandparents) on a unique expedition of



mischievous and mayhem, to lands full of magical midnight feasts, curious creatures, raucous pillow fights, hidden retreats, top notch food, drink and boutique camping options and breathtaking beauty.

Photo: Just So Festival/Wild Rumpus

Address: Rode Hall Estate, Scholar Green, Cheshire

Internet: [justsofestival.org.uk](http://justsofestival.org.uk)

Email: [hello@justsofestival.org.uk](mailto:hello@justsofestival.org.uk)

### Lanterns & Light at Chester Zoo (November & December)



Every winter holiday season, get ready to enter the mesmerising, fantastical worlds, bursting with colour and brimming with

animal-inspired illuminations and traditional festive scenes. It's an experience that will leave you with that cosy, warm glow inside. Colourful Butterfly Garden, the authentic allure of Nordic markets, twinkling Christmas trees and a magical ice kingdom — all uniting with our favourite animal lanterns from Christmases past.

Photo: Marketing Manchester

Address: Chester Zoo, Caughall Road, Upton, Chester, Cheshire

Internet:

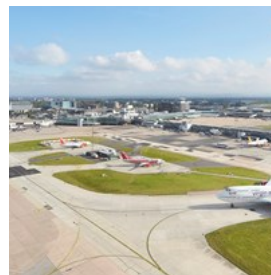
[www.chesterzoo.org/events/the-lanterns-at-chester-zoo](http://www.chesterzoo.org/events/the-lanterns-at-chester-zoo)

## TOURIST INFORMATION



*M.V. Photography / Shutterstock.com*

### Manchester Airport (MAN)



With three terminals handling over 23 million passengers each year, Manchester Airport is the UK's Global Gateway for the North. Sixty-five

airlines ensure Manchester Airport is directly connected to over 200 destinations, and no more than one-stop away from anywhere in the world.

The airport has a combined railway and bus station, with departures to Manchester and the rest of the country. The train to Manchester Piccadilly takes about 20 minutes. Airport buses to Manchester depart every half hour. Taxis and car hire companies are also available at the airport.

Direct trams link the airport to the city centre and Victoria station — your gateway to national rail services — every 12-15 minutes. Remember to purchase tickets from the machines on all platforms prior to boarding or tap in using your contactless card or device, making sure to tap out when you finish your journey. For weekend trips, multiple destinations, or family travel, consider a Travelcard for great value.

Photo: Hufton and Crow/Marketing Manchester  
Phone: +44 808 169 7030  
Internet: [www.manchesterairport.co.uk](http://www.manchesterairport.co.uk)

## Public Transport



Thanks to an integrated transport network Manchester is one of the most accessible cities in the UK for both national and international visitors.

As England's Gateway to the North, travel around Northern England is easy too, and Manchester Airport is easily accessible from Manchester city centre.

Getting around the city and surrounding areas is easy once you're here thanks to the fleet of buses, trams and trains available. The compact nature of the city centre also makes walking a popular choice. If you're driving into the city, there are a number of car parks available, or if you're wanting to explore the wider region, car hire is a popular choice for travellers. And for those on a flying visit, there are a number of secure places to leave your luggage.

Photo: Marketing Manchester  
Internet: [www.visitmanchester.com/visitor-information/travel-information](http://www.visitmanchester.com/visitor-information/travel-information)

## CitySpareSpace Luggage Storage



Need luggage storage in Manchester? Whether you need a few hours or a few days, City Spare Space makes it easy to book affordable luggage storage in local businesses in Manchester.

Photo: Marketing Manchester  
Internet: [www.citysparespace.com/luggage-storage/manchester](http://www.citysparespace.com/luggage-storage/manchester)

## Stasher



Stasher have locations across Manchester where you can store your bag. Enjoy the most of your day without having to lug your bags around with you! Their locations are trusted hotels and shops who safely store your bags.

You must book online — hosts cannot accept payment in store.

Photo: Stasher  
Internet: [stasher.com/luggage-storage/manchester](http://stasher.com/luggage-storage/manchester)

## Taxi



Manchester's largest fleet of iconic black cabs with 300 professional, uniformed drivers and over 50 years' experience. You can be confident that Mantax will get you from A to B as quickly as possible. Mantax pride themselves on customer service, high standards and safety; all of their journeys are GPS tracked and can even be booked and tracked live on their iPhone or Android App and Web Booker. All of their taxis accept credit and debit card payments (including Amex), are wheelchair accessible and seat 5 or 6 with plenty of room for luggage.

Their rates are set and regulated by Manchester City Council. Mantax offer black cab quality at private hire rates so call for your personal quote today.

You can book by phone, order a cab in their free iPhone or Android application, or via their website. Mantax specialise in corporate &

personal accounts and can offer a bespoke service for all your travel needs.

Photo: Tak-Kei Wong/unsplash

Address: 1-3 West Street, Manchester

Phone: +44 161 230 3333

Internet: [www.visitmanchester.com/visitor-information/travel-information/mantax-p270811](http://www.visitmanchester.com/visitor-information/travel-information/mantax-p270811)

## Post



Postage stamps are available across Manchester at post offices, newsagents and supermarkets. To post a package or small souvenirs, drop into a post office — you can find your nearest branch on their official website. Post offices are generally open Monday–Friday from 9 am to 5:30 pm and Saturday from 9 am to 12:30 pm.

Photo: Lina Kivaka/pexels

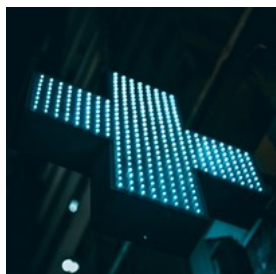
Address: Manchester Post Office, 26 Spring Gardens, Manchester

Opening hours: Mon–Fri 9am–6pm, Sat 9am–5:30pm, Sun closed

Phone: +44 345 722 3344

Internet: [www.postoffice.co.uk](http://www.postoffice.co.uk)

## Pharmacy



Whether you need to buy over-the-counter medication or collect a prescription, there are plenty of pharmacies all over the capital. Boots and Superdrug are two big chemist chains. You will also find pharmaceutical products at some of the larger supermarket branches.

Photo: Vladislav Bychkov/unsplash

Address: Cameolord Pharmacy, 7 Oxford Street, Manchester

Opening hours: Daily 8am–midnight

Phone: +44 161 236 1445

Internet: [www.nhs.uk/Services/Pharmacies/Overview/DefaultView.aspx?id=7858](http://www.nhs.uk/Services/Pharmacies/Overview/DefaultView.aspx?id=7858)

## Telephone



Country code: +44 Area code: 0161

Photo: Jack Finnigan/unsplash

## Electricity



Electrical appliances are connected to the UK mains supply using a three-pin plug known as plug type G. The sockets come with on-and-off

switches, unlike in many other countries.

The average voltage of a UK power socket is 230v or slightly higher, so check the voltage of your device before plugging it in.

Photo: Idyshah/pixabay

## Population

City: 551,938

Urban area: 2.8 million

## Currency

British Pound, £1 = 100 pence

## Opening hours

Shops are usually open Mon–Fri 10am–8pm, Sat 9am–7pm, Sun 11am–5pm.

## Internet

[www.visitmanchester.com](http://www.visitmanchester.com)

## Newspapers

The Guardian — [www.theguardian.com](http://www.theguardian.com)

Manchester Evening News —

[www.manchestereveningnews.co.uk](http://www.manchestereveningnews.co.uk)

Manchester Metro News (free) —

[metro.co.uk/tag/manchester](http://metro.co.uk/tag/manchester)

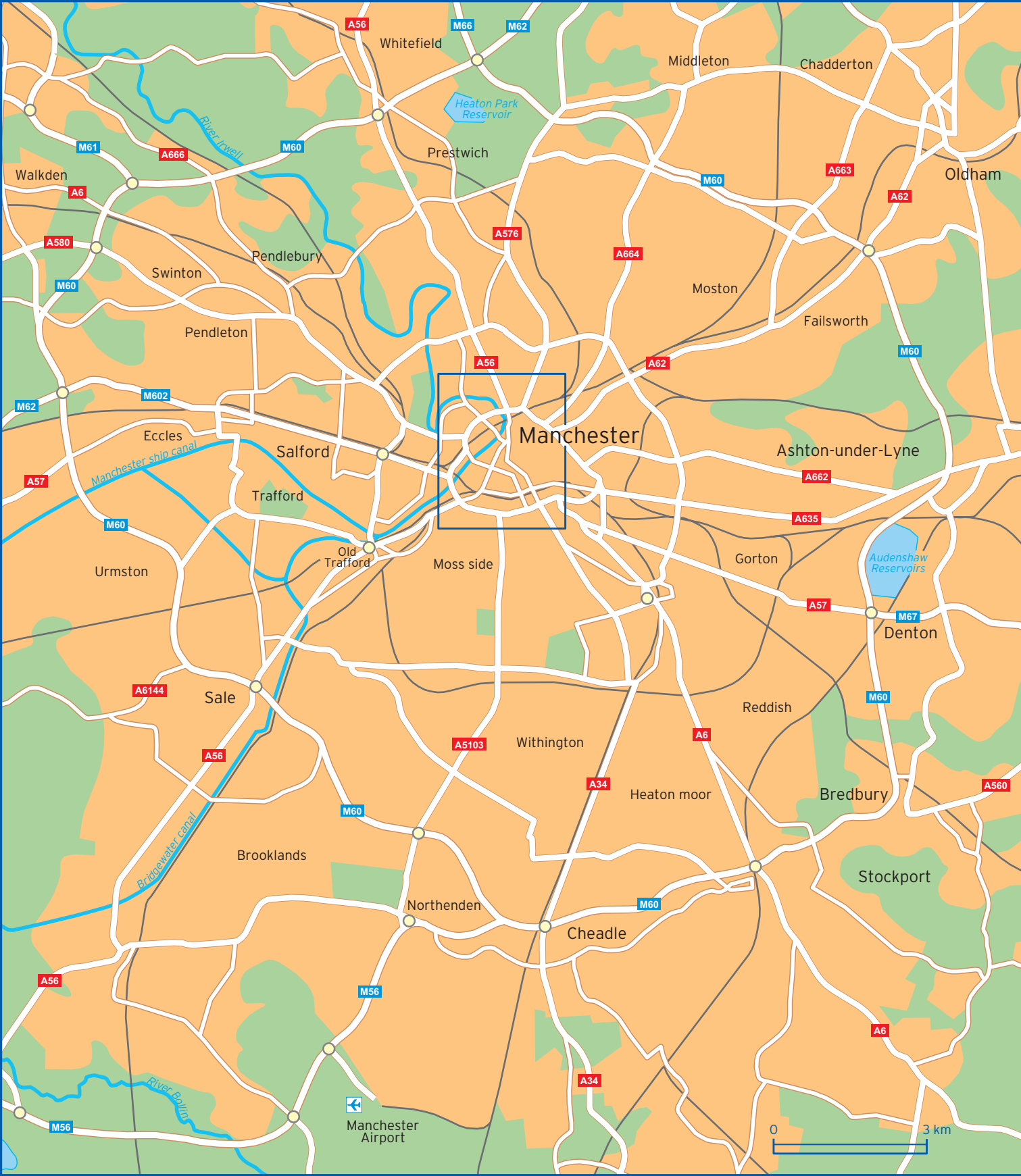
## Emergency numbers

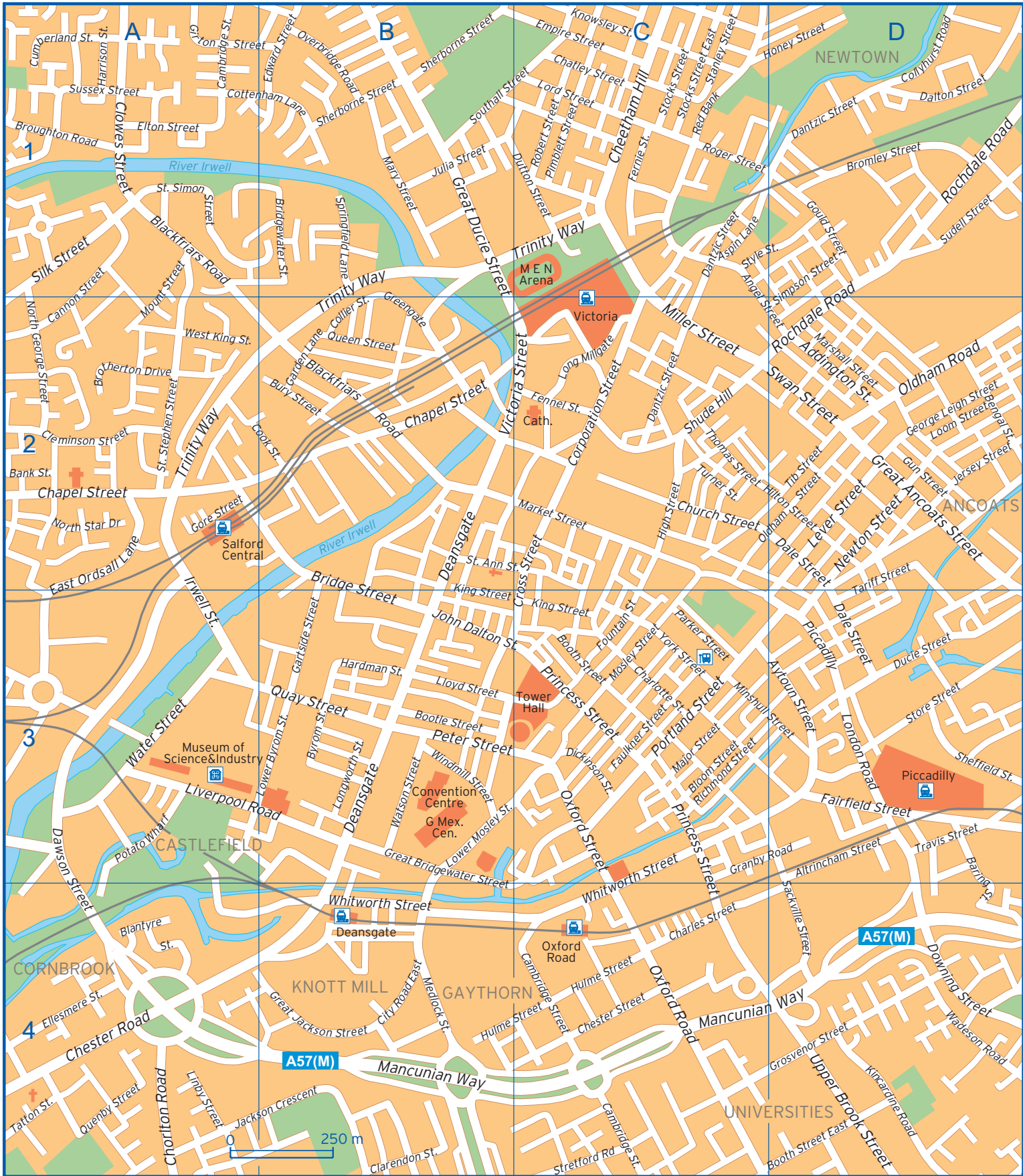


112  
999

**Tourist information**

Manchester Visitor Information Center  
Manchester Central Library, St Peter's Square  
Open Mon–Fri 9am–5pm







Addington Street	D2	Downing Street	D4	Lord Street	C1
Altrincham Street	D3	Ducie Street	D3	Lower Byrom Street	B3
Angel Street	C1 D2	Dutton Street	B1 C1	Lower Mosley Street	B3
Aspin Lane	C1	East Ordsall Lane	A2 A3	Major Street	C3
Aytoun Street	C3 D3	Edward Street	B1	Mancunian Way	B4 C4 D4
Bank Street	A2	Ellesmere Street	A4	Market Street	C2
Baring Street	D3 D4	Elton Street	A1	Marshall Street	D2
Bengal Street	D2	Empire Street	C1	Mary Street	B1
Blackfriars Road	A1 B2	Fairfield Street	D3	Medlock Street	B4
Blantyre Street	A4	Faulkner Street	C3	Miller Street	C2
Bloom Street	C3	Fennel Street	C2	Minshull Street	C3 D3
Booth Street	C3	Fernie Street	C1	Mosley Street	C3
Booth Street East	D4	Fountain Street	C3	Mount Street	A1 A2
Bootle Street	B3	Garden Lane	B2	Newton Street	D2
Bridge Street	B2 B3	Gartside Street	B3	North George Street	A2
Bridgewater Street	B1	George Leigh Street	D2	North Star Drive	A2
Bromley Street	D1	Girton Street	A1 B1	Oldham Road	D2
Brotherton Drive	A2	Gore Street	A2	Oldham Street	C2 D2
Broughton Road	A1	Gould Street	D1	Overbridge Road	B1
Bury Street	B2	Granby Road	C3 D3	Oxford Road	C4
Byrom Street	B3	Great Ancoats Street	D2	Oxford Street	C3
Cambridge Street	A1 C4	Great Bridgewater Street	B3 B4	Parker Street	C3
Cannon Street	A1 A2	Great Ducie Street	B1 B2	Peter Street	B3
Chapel Street	A2 B2	Great Jackson Street	B4	Piccadilly	D3
Charles Street	C4	Greengate	B2	Pimblett Street	C1
Charlotte Street	C3	Grosvenor Street	D4	Portland Street	C3
Chatley Street	C1	Gun Street	D2	Potato Wharf	A3
Cheetham Hill	C1	Hardman Street	B3	Princess Street	C3 C4
Chester Road	A4	Harrison Street	A1	Quay Street	B3
Chester Street	C4	High Street	C2	Queen Street	B2
Chorlton Road	A4	Hilton Street	C2 D2	Quenby Street	A4
Church Street	C2	Honey Street	C1 D1	Red Bank	C1
City Road East	B4	Hulme Street	B4 C4	Richmond Street	C3
Clarendon Street	B4	Irwell Street	A2 A3	Robert Street	C1
Cleminson Street	A2	Jackson Crescent	A4 B4	Rochdale Road	D1 D2
Clowes Street	A1	Jersey Street	D2	Roger Street	C1
Collier Street	B2	John Dalton Street	B3 C3	Sackville Street	D3 D4
Collyhurst Road	D1	Julia Street	B1	Sheffield Street	D3
Cook Street	A2 B2	Kincardine Road	D4	Sherborne Street	B1
Corporation Street	C2	King Street	B3 C3	Shude Hill	C2
Cottenham Lane	A1 B1	Knowsley Street	C1	Silk Street	A1
Cross Street	C2 C3	Lever Street	D2	Simpson Street	D1 D2
Cumberland Street	A1	Linby Street	A4	Southall Street	B1 C1
Dale Street	D2 D3	Liverpool Road	A3 B3	Springfield Lane	B1
Dalton Street	D1	Lloyd Street	B3	St. Ann Street	B2 C2
Dantzic Street	C1 C2 D1	London Road	D3	St. Simon Street	A1
Dawson Street	A3 A4	Long Millgate	C2	St. Stephen Street	A2
Deansgate	B2 B3	Longworth Street	B3	Stanley Street	C1
Dickinson Street	C3	Loom Street	D2	Stocks Street	C1

Stocks Street East	C1	Tatton Street	A4	Wadeson Road	D4
Store Street	D3	Thomas Street	C2	Water Street	A3
Stretford Road	C4	Tib Street	D2	Watson Street	B3
Style Street	C1 D1	Travis Street	D3	West King Street	A2
Sudell Street	D1	Trinity Way	A2 B1 B2 C1	Whitworth Street	B4 C3 C4
Sussex Street	A1	Turner Street	C2	Windmill Street	B3
Swan Street	C2 D2	Upper Brook Street	D4	York Street	C3
Tariff Street	D2 D3	Victoria Street	B2 C2		