



# Blekinge

Photo: Visit Blekinge



Visit Blekinge



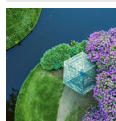
&vin/Visit Blekinge



Visit Blekinge

Discover Blekinge, Sweden's southeastern gem! Known for its archipelagos, lakes, and forests, it's a haven for nature lovers. Historic towns like Karlskrona, and Ronneby offer unique heritage and UNESCO-listed architecture. Explore Blekinge's diverse landscapes and cultural treasures. Welcome to Sweden's smallest county, brimming with adventure!

## Featured



### Ronneby Brunnspark

Ronneby Brunnspark is a beautiful and award-winning park boasting a myriad o...



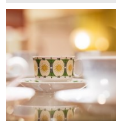
### Kreativum Science Center

The science museum Kreativum beckons curious minds of all ages to discover a...



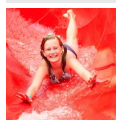
### Dragsö Camping & Stugby

Dragsö Camping & Stugby is an idyllic campsite situated on its own island, j...



### Porcelain Museum

Explore a fascinating journey through porcelain history at a unique exhibiti...



### Barnens Gård (Children's Farm)

Barnens Gård offers an exciting all-day adventure for the entire family, fea...

## Top 5



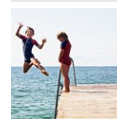
### Bergslagen

Ronneby has the beautiful Brunnspark but also a cultural treasure— Bergslage...



### Naval Museum

The Naval Museum provides a captivating journey into the intriguing realm of...



### Blekinge Riviera

Along the coast, the archipelago turns into sandy beaches by the time you re...



### Kallbadhus

Embrace the invigorating Nordic tradition of taking cold baths in a unique a...



### Östersjöfestivalen

Transform your summer with the Östersjöfestivalen (Baltic Sea Festival), a f...



## WORLD HERITAGE KARLSKRONA



*Visit Karlskrona*

Karlskrona, a UNESCO site since 1998, boasts historic architecture and a naval base established in 1680 by King Charles XI. Its rich maritime legacy and design charm make it a unique cultural gem.

## DO & SEE



*Visit Blekinge*

Whether you like action or prefer peace and quiet, you'll feel welcome in Blekinge. Learn more about the county's history in one of its museums. Experience wild animals up close or maybe visit the more exotic ones at a distance. Bathe and play in waterparks or take a boat trip in the beautiful archipelago. Your imagination sets the limits!

## Bergslagen



Ronneby has the beautiful Brunnspark but also a cultural treasure—Bergslagen. A real neighbourhood with buildings and street structures dating back to the Middle Ages. Here, you can stroll in cultural-historical environments along narrow winding alleys behind the Holy Cross church with its vast collection of Renaissance art. There's also a home-built museum and art exhibitions at Ronneby Cultural Center in the area.

Photo: Visit Blekinge

Address: Bergslagen, Ronneby

Internet: [www.ronneby.se/uppleva--gora/kultur/konst/kulturcentrum-ronneby-konsthall.html](http://www.ronneby.se/uppleva--gora/kultur/konst/kulturcentrum-ronneby-konsthall.html)

## Naval Museum



The Naval Museum provides a captivating journey into the intriguing realm of the Swedish Navy. Featuring authentic battleships, 18th-century figureheads, and unique models, the exhibits offer a comprehensive look at Sweden's naval history. A highlight is the underwater tunnel housing a genuine wreck.

Going beyond conventional displays, the museum offers interactive experiences, allowing visitors to fully immerse themselves in the naval world. Step aboard historic vessels, listen to captivating sea tales through audiovisual presentations and engage your senses for an enriching exploration of maritime heritage.

Photo: Visit Blekinge

Address: Marinmuseum, Stumholmen, Karlskrona

Opening hours: Tue, Thu-Sun 10am-4pm; Wed 10am-7pm;

Mon closed

Phone: +46 455 35 93 02

Internet: [www.marinmuseum.se/en](http://www.marinmuseum.se/en)

Email: [marinmuseum@smtm.se](mailto:marinmuseum@smtm.se)

### Blekinge Riviera



Along the coast, the archipelago turns into sandy beaches by the time you reach the western corner of the county. Instead of an archipelago, it has beaches—many long ones with beautiful fine sand. In Sölvesborg, there is a beach for every day of the week and even more. Some of them are full of life and offer kiosks, restaurants, and playgrounds, while others are quiet and hidden.

Photo: Lars Nyman/Visit Blekinge

Internet: [www.visitblekinge.se/en/solvesborg/strander](http://www.visitblekinge.se/en/solvesborg/strander)

### Kallbadhus



Embrace the invigorating Nordic tradition of taking cold baths in a unique and refreshing setting at Kallbadhus — an experience both revitalising and memorable.

Photo: Karlshamns Kallbadhus/Visit Blekinge

Address: Östersjön, Sweden

Phone: +46 70 598 42 66

Internet: [www.kallbad.com](http://www.kallbad.com)

Email: [info@kallbad.com](mailto:info@kallbad.com)

### Östersjöfestivalen



Transform your summer with the Östersjöfestivalen (Baltic Sea Festival), a four-day folk festival in Karlshamn. Music, delicacies, and cultural experiences await you at this spectacular seaside party.

Photo: Aranxa Esteve/Unsplash

Internet: [ostersjofestivalen.se](http://ostersjofestivalen.se)

### Ronneby Brunnspark



Ronneby Brunnspark is a beautiful and award-winning park boasting a myriad of activities, including the delightful Café Mandeltårtan, bustling flea markets, and vibrant music events and festivals. With roots dating back to the 1870s when a spring gained popularity for its health benefits, Ronneby Brunnspark continues to draw visitors seeking well-being. The tradition persists as people from across the country journey to drink from the rejuvenating spring, evoking a sense of wellness and tranquillity that makes a visit to Ronneby Brunnspark a timeless and healthful experience.

Photo: Ronneby Brunnspark/Visit Blekinge

Address: Ronneby Brunnspark

### Blekinge Museum



With collected memories and traces of the history of mankind in Blekinge from the past 10,000 years, Blekinge Museum delves into the region's past, unravelling stories of local trades such as

fishing, boat-building, and quarrying. A highlight within its exhibits is Grevagården, an impeccably preserved 18th-century residence adorned with an extensive array of vintage artefacts.

Photo: Blekinge Museum/Visit Blekinge

Address: Borgmästaregatan 21, Karlskrona

Opening hours: Tue-Sun 10am-4pm, Mon closed

Phone: +46 455 30 49 85

Internet: [blekingemuseum.se/welcome](https://blekingemuseum.se/welcome)

Email: [info@blekingemuseum.se](mailto:info@blekingemuseum.se)

### Ronneby Brunnbad Water Park



Dive into a day of aquatic fun at Brunnbadet Water Park, where an array of thrilling attractions awaits. Experience the excitement of water

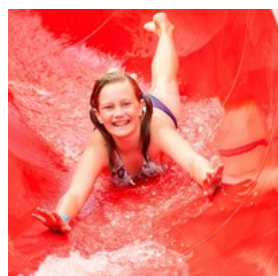
slides, navigate through stream channels, and enjoy the soothing swirls of lagoons. For the little ones, there are specially designed children's pools. Take a break from the aquatic adventures to relax in the hot tub or indulge in a water massage. Whether you prefer sunbathing, sipping coffee, or socialising, Brunnbadet has it all. With amenities like an ice cream kiosk and a restaurant, the water park ensures everything you need for a memorable day with the whole family.

Photo: Visit Blekinge

Address: Ronneby Brunn Brunnbadet, Ronneby

Phone: +46 457 61 80 80

### Barnens Gård (Children's Farm)



Barnens Gård offers an exciting all-day adventure for the entire family, featuring the thrilling Waterland with pools for both small and large children, along with the daring Tjurfallet, a

120-metre-long water slide sure to exhilarate the bravest visitors. The fun continues at Leklandet, a playground designed for speed and excitement. Amidst the excitement, families can also interact with farm animals, including goats, chickens, rabbits, and pigs.

Photo: Barnens Gård/Visit Blekinge

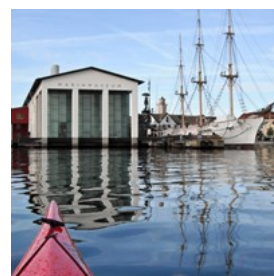
Address: Viet, Lyckeby

Phone: +46 72 325 60 20

Internet: [barnensgard.se](https://barnensgard.se)

Email: [info@barnensgard.se](mailto:info@barnensgard.se)

### Go Kayaking



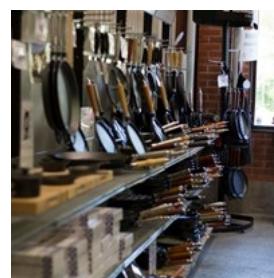
Embark on a paddling adventure in the UNESCO World Heritage-listed Karlskrona with Karlskrona Kajak, run by two passionate paddling enthusiasts. Whether on seas, lakes, or rivers, the guided kayak tours in the enchanting Blekinge archipelago promise an immersive experience.

Photo: Visit Blekinge

Internet: [karlskronakajak.se](https://karlskronakajak.se)

Email: [info@karlskronakajak.se](mailto:info@karlskronakajak.se)

### Ronneby Bruk



The Ronneby area proudly upholds a rich tradition in the production of cast iron cookware, a legacy perpetuated by Ronneby

Bruk's expertise in crafting thin-wall cast iron products. The product range encompasses both traditionally sand-moulded cast iron and innovative lightweight cast iron cookware. For enthusiasts of cast iron, this locale stands as a mecca, offering not only a diverse selection of cast iron cookware but also an array of exclusive



products, ranging from copper and knives to porcelain. The factory shop is a treasure trove filled with these exceptional items, all available at great prices.

Photo: Ronneby Bruk/Visit Blekinge

Address: Järnbruksvägen 5, Kallinge

Opening hours: Mon–Fri 9am–5pm, Sat & Sun closed

Phone: +46 73 151 96 92

Internet: [ronnebybruksfabriksbod.se](http://ronnebybruksfabriksbod.se)

Email: [butik@ronnebybruk.com](mailto:butik@ronnebybruk.com)

### Kreativum Science Center



The science museum Kreativum beckons curious minds of all ages to discover and explore the wonders of nature and the groundbreaking

inventions that have shaped our world. A captivating and exciting destination for all senses, Kreativum invites visitors to rediscover humanity, nature, and technology. The museum's various discovery zones are designed to stimulate curiosity, offering an immersive and educational experience that engages and inspires.

Photo: Lars Nyman/Visit Blekinge

Address: Trömmavägen 28, Karlshamn

Opening hours: Tue–Sat 10am–4pm, Sun & Mon closed

Phone: +46 454 56 39 50

Internet: [kreativum.se](http://kreativum.se)

Email: [info@kreativum.se](mailto:info@kreativum.se)

### Dragsö Camping & Stugby



Dragsö Camping & Stugby is an idyllic campsite situated on its own island, just 3km from Karlskrona city.

Connected to the mainland by a bridge, or accessible by the scenic

archipelago boat, Dragsö offers an ideal family retreat. The campsite caters to all ages, boasting activities such as an adventurous mini-golf course, opportunities for canoeing, diving, snorkelling, and a pirate-themed playground for the little ones. Dragsö's shores are adorned with excellent beaches, inviting visitors to enjoy the sun and surf or opt for a refreshing swim from the rocks.

Photo: Dragsö Camping/Visit Blekinge

Address: Dragsövägen 14, Karlskrona

Phone: +46 455 153 54

Internet: [www.dragso.se](http://www.dragso.se)

Email: [info@dragso.se](mailto:info@dragso.se)

### The Gold Treasures from Vång & The Shipwreck Gribshunden



Discover Ronneby's fascinating history, in the heart of Brunnsparken. In Kallvattenkuren, you can take part in the exhibition about the world-famous

Gribshunden, a 500-year-old shipwreck, and the spectacular gold finds from Vång, which was once an important settlement from the Iron Age.

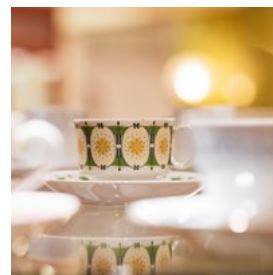
Photo: Guldgubbarna i Västra Vång, Blekinge Museum/Visit Blekinge

Address: Kurpromenaden 4, Ronneby

Opening hours: Daily 10am–4pm

Phone: +46 457 61 79 70

### Porcelain Museum



Explore a fascinating journey through porcelain history at a unique exhibition housed in the former premises of the Karlskrona Porcelain

factory. This captivating showcase spans the production years from 1918 to 1968, offering a

glimpse into the evolution of craftsmanship during a significant era.

Photo: Mattias Larsson, Fabas/Visit Blekinge

Address: Karlskrona Porslinsmuseum, Östra Hamngatan 7D, Karlskrona

Phone: +46 455 36 12 23

Internet: [www.fabas.se/vara-museer](http://www.fabas.se/vara-museer)

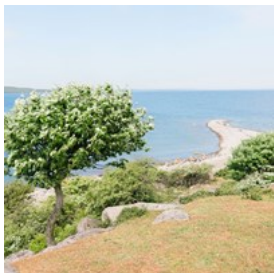
## ISLANDS & ARCHIPELAGO



Visit Blekinge

Enjoy blue days with wind and water, salt-sprinkled cliffs and lovely coves. Embark on a wonderful voyage of discovery in the Blekinge archipelago.

### Mythical Hanö



Hanö, a fairytale island only half an hour by boat from Nordersund, beckons with a magical charm.

The brief ferry ride reveals captivating

stories, notably the Dragon tale, where a dragon crashed upon the lighthouse's first lighting. Hanö enchants visitors with three beautiful bathing places, a restaurant overlooking Hanö Bay, and a rich maritime heritage dating back to the 1800s.

Photo: Helena Schütz/Visit Blekinge

### Aspö



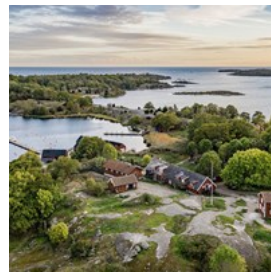
To Aspö, an island with about 500 inhabitants, you can take less than half an hour with the Aspöfärjan from Handelshamnen in

Karlskrona. There is plenty to do here and if you have a bike with you, Aspö offers two-mile-long rounds on winding roads that take you deep into the island's summer wilderness. Along the way, you can cool off at the island's bathing area or take a lovely dip from the cliffs. If you are interested in art, you can stop at one of the malls on the island. Queen's Castle, dating from the 17th century, is part of the World Heritage and definitely a must-visit during the Aspö stay.

Photo: Visit Blekinge

Address: Aspö, Karlskrona

### Popular Tjärö



Tjärö, an idyllic archipelago island, embodies the essence of the Swedish archipelago with its stunning nature, grazing animals, stone

fences, and leafy hiking trails. Designated as a nature reserve, Tjärö boasts abundant plant and bird life, offering a tranquil retreat into the heart of nature.

Photo: Visit Blekinge

Address: Tjärö

More Info: Accessible via ferry from Järnavik, Matvik, and Karlshamn

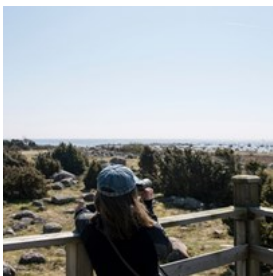
### Senoren



Senoren Island, situated close to the mainland, is a captivating haven with lush greenery that beautifully frames the picturesque agricultural landscape. The island's appeal is heightened by a 40-metre-high cliff, providing breathtaking views of Sweden's southernmost wilderness. Explore an untouched beech and oak forest adorned with rich flora, creating a scenic masterpiece that invites visitors to immerse themselves in the natural splendour of Senoren.

Photo: Jacob Zocherman för ARK56/Visit Blekinge  
Address: Senoren

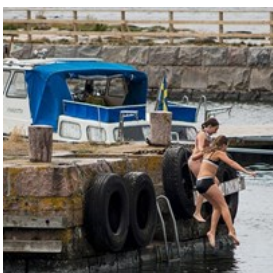
### Torhamns Udde



Torhamns Udde is an open peninsula surrounded by meadows, marshes, and bushland. Renowned for its birdlife, it offers a path which meanders through fields of grass and coastal meadows, featuring birdwatching towers for convenient rest stops, providing an ideal environment for nature enthusiasts and those keen on exploring the cultural heritage of this picturesque location.

Photo: Jacob Zocherman för ARK56/Visit Blekinge  
Address: Torhamns Udde

### Stenshamn & Utlängan



Stenshamn and Utlängan, connected islands in Karlskrona's eastern archipelago, is a perfect day trip from the city. Rich birdlife,

opportunities for bathing, and outdoor activities abound on these islands. Explore the marked hiking trail, delving into the island's history and natural beauty. A boathouse exhibition at Stenshamn Harbour provides insights into the islands' 20th-century history.

Photo: Jacob Zucherman för ARK56/Visit Blekinge

### Kristianopel



Situated approximately 40 km north of Karlskrona, Kristianopel is a charming village that breathes life into a captivating history.

Echoes of bygone eras of strife and conflict resonate through its streets, bearing witness to a time when the border between Denmark and Sweden converged in this very region. The sprawling city wall, stretching for kilometres with formidable bastions, not only served as a protective barrier for inhabitants but stands today as a tangible reminder of the once heavily fortified border.

Founded in the early 1600s by Danish King Christian IV, Kristianopel holds the prestigious title of Scandinavia's first Renaissance city. In this historic village, visitors can explore small shops, inviting restaurants, and a popular café, immersing themselves in its vibrant ambience. For a breathtaking panoramic view, you can walk around parts of the mighty old city wall, offering a unique perspective that captures Kristianopel's timeless allure.

Photo: Niklas Kämpargård/Visit Blekinge  
Address: Kristianopel  
Internet: [www.visitblekinge.se/en/karlskrona/kristianopel](http://www.visitblekinge.se/en/karlskrona/kristianopel)



## Tärnö



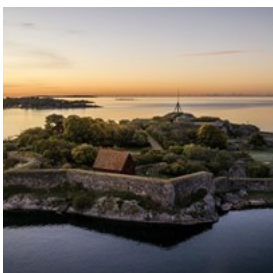
At the outermost reaches lies Tärnö, the largest island in Karlshamn's archipelago. From Drakaberget, the island's highest point, panoramic

views unveil over half of Blekinge's coast, with ancient mountain burrows thought to be marks of a dragon from bygone times. The island is adorned with the Tärnö lighthouse on Iberget, constructed in 1910.

Photo: Niklas Kämpargård/Visit Blekinge

More Info: Accessible by boat during the summer from Karlshamn city centre and Matvik

## Kastellet

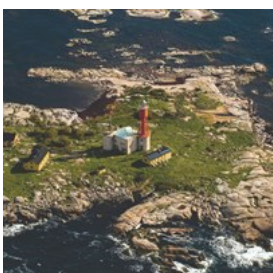


Kastellet, a fortress island situated just off the port entrance of Karlshamn, stands as a testament to historical conflicts during the 17th-century feuds

with the Danish. Beyond its historical significance, Kastellet provides the picturesque backdrop for a beloved local theatre performance held during the summer months. Accessible by boat from the inner harbour in Karlshamn during the summer season, Kastellet invites exploration and appreciation of its rich history and scenic allure.

Photo: Per Pixl/Visit Blekinge

## Exotic Utklippan



Utklippan is not only Sweden's southeastern archipelago, but it is also an exotic place in the outermost sea band with rarely seen wildlife. Here

you can get up close with both grey seals and knob seals, an experience seldom found elsewhere. For those staying ashore, the island introduces the green-spotted toad, complemented by a vibrant birdlife. Hosting a lighthouse since 1789, Utklippan preserves a rich maritime history. Accessible via the archipelago boat departing from Handelshamnen in Karlskrona during the summer, Utklippan beckons adventurers to explore its remarkable biodiversity and historical charm.

Photo: Utklippan/Visit Blekinge

Address: Utklippan

## DINING & SWEDISH FIKA



Visit Blekinge

Do you fancy something local, new or exciting? Blekinge has a whole range of taste experiences to offer. Indulge yourself with some Blekinge roasted coffee, or visit one of their local breweries making beer tasting of raspberries or mayonnaise that feels like a kiss.

Be sure to also try the local flavours on ice cream, goat cheese, and sourdough cinnamon buns from a bakery. In Blekinge, the restaurants focus on wild meat, fresh fish and vegetables from the farmers around, so you are in for a treat!



### Lax & Vin



Dedicated to excellence, this establishment places a strong emphasis on using organic products, prioritising quality-conscious

producers committed to their craft and sourcing raw materials locally whenever possible. The menu, rooted in the seasons and the availability of carefully selected products, reflects innovation, variability, and harmony with nature's course. Guests can unwind in the wine bar, where drinks and snacks offer a delightful prelude or opt for a full-fledged dining experience in the restaurant.

Photo: &vin/Visit Blekinge  
Address: Pirgatan 15, Karlshamn  
Phone: +46 454 57 20 40  
Internet: [www.ochvin.se](http://www.ochvin.se)  
Email: [info@ochvin.se](mailto:info@ochvin.se)

### Hoby Kulle Herrgård



The magnificent Hoby Kulle Manor is located just outside Bräkne-Hoby, in the heart of Blekinge County. Experience the peaceful environment

dating back to the 1600s. Treat yourself to a meal beneath the vines in the charming orangery, or shop for antiques and plants in the farm shop.

Photo: Hoby Kulle Manor/Visit Blekinge  
Address: Hobykullsvägen 7, Bräkne-hoby  
Phone: +46 457 107 10  
Internet: [hobykulleherrgard.se](http://hobykulleherrgard.se)  
Email: [info@hobykulleherrgard.se](mailto:info@hobykulleherrgard.se)  
More Info: Bed & Breakfast, Café

### Havsörnen – Eriksberg



At the Havsörnen restaurant, the goal is to work with season-based products and foods. The use of quality products from the farm, the forest, the lakes, the sea and the garden as well as working with carefully selected people, such as the farm's game master, gardener and local fishermen is the key.

Photo: Eriksberg/Visit Blekinge  
Address: Trensum, Karlshamn  
Opening hours: Daily 6pm-11pm  
Phone: +46 454 56 43 30  
Internet: [www.eriksberg.se/restaurang](http://www.eriksberg.se/restaurang)  
Email: [info@eriksberg.se](mailto:info@eriksberg.se)  
More Info: Eriksberg Hotel & Nature Reserve

### Café Mandeltårtan



Café Mandeltårtan is located in the Ronneby centre with a view of the beautiful and awarded Brunnsparken. Choose between sandwiches,

freshly baked bread, traditional pastries with a twist, and Swedish cakes. Baking and craftsmanship are the heart of this café, and they only use organic ingredients. At Mandeltårtan, they taste and develop new recipes also for those who need gluten- and lactose-free food. On Sundays, there is a flea market at Brunnsparken and lots of other activities.

Photo: Mandeltårtan/Visit Blekinge  
Address: Fridhemsvägen 2, Ronneby  
Opening hours: Tue-Fri 10am-5pm, Sat & Sun 10am-4pm, Mon closed  
Phone: +46 457 109 99  
Internet: [mandeltartan.se/sv](http://mandeltartan.se/sv)  
Email: [info@fiola.se](mailto:info@fiola.se)

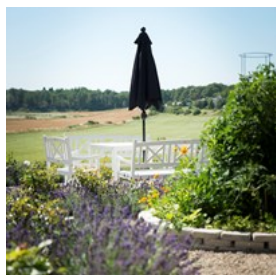
### Astensmåla Gård



Astensmåla Mat & Vingård is beautifully situated in the western forests of Blekinge, with proximity to the lively waters of Mörrumsån and its fishing opportunities. Since 1991, the farm has been owned by the Berg family and has been a gathering point for new and old friends, family and international guests where the boundless love of food and drink has always been the common denominator. Here, family gastronomy in historical surroundings is combined with Blekingska flavours made from genuine ingredients. The restaurant has a brand new kitchen where you can follow the chefs' movements and creations in the smallest detail.

Photo: Niklas Kämpargård/Visit Blekinge  
Address: Svängstavägen 1255-15, Svängsta  
Phone: +46 76 398 05 05  
Internet: [www.astensmalagard.se](http://www.astensmalagard.se)  
Email: [info@astensmalagard.se](mailto:info@astensmalagard.se)

### Äggaboden



A farm shop with a café and restaurant serving local cuisine with flavours from Blekinge. Äggaboden's theme is 'earth, sea, and forest.'

Here, the food is selected with a variety of products from local producers. Their philosophy also includes living and growing ecologically to keep the countryside alive. Enjoy your lunch with a choice of natural wines with a strong sense of origin, personal character, and honest expression.

Photo: Caluva/Visit Blekinge  
Address: Gärestad 16, Ronneby

Phone: +46 457 361 42  
Internet: [www.aggaboden.se](http://www.aggaboden.se)  
Email: [info@aggaboden.se](mailto:info@aggaboden.se)

### Villa Vassen



Nestled on the mainland of Ekenäs, Villa Vassen beckons with its genuine charm, embodying a restaurant that exudes a seaside ambience. The

allure extends to its wonderful terrace, where patrons can bask in the sun, sipping on a glass of wine or savouring a coffee and ice cream against the backdrop of a beautiful sea view. Operating year-round, Villa Vassen adapts its offerings to the changing seasons. From lunch buffets to Sunday Brunch extravaganzas, the restaurant caters to varied tastes.

Photo: Mickes galleri/Visit Blekinge  
Address: Karöbryggan 6, Ronneby  
Phone: +46 76 168 40 69  
Internet: [www.villa-vassen.se](http://www.villa-vassen.se)

### Hälleviks Havsbad



Embark on a quintessential Blekinge summer retreat at Hälleviks Havsbad, where sun-soaked beach days seamlessly transition into

delightful evening experiences. A highlight of the high season is the popular "shrimp all you can eat" at Hälleviks Havsbad every Thursday. Revel in the laid-back atmosphere as you savour an abundance of wonderfully good prawns, complemented by live music that sets the perfect backdrop for seaside relaxation. The talented staff might even surprise you with their musical talents, creating an enchanting ambience.

Photo: Visit Blekinge



Address: Semestervägen 5 294 72 Sölvesborg

Phone: +46 456 520 10

Internet: [www.hallevikshavsbad.com](http://www.hallevikshavsbad.com)

Email: [info@hallevikshavsbad.com](mailto:info@hallevikshavsbad.com)

### Nya Skafferiet



Indulge in a gastronomic delight at Nya Skafferiet, where the best lunch buffet awaits with a plethora of vegetarian alternatives. Immerse yourself in the diverse spread featuring various salads and homemade pies, brimming with delectable fillings from the deli counters. The culinary adventure doesn't end there; explore the shelves adorned with delicious marmalades, cookies, sauces, and more. As the day transitions into the evening, Nya Skafferiet transforms into a lively wine bar, buzzing with excitement.

Photo: Visit Blekinge

Address: Rådhusgatan 9, Karlskrona

Phone: +46 455 171 78

Email: [info@nyaskafferiet.se](mailto:info@nyaskafferiet.se)

### Brasserie Fridolf



Restaurant, bar and market hall, all under one roof. In the classic environment, they offer you lunch, a la carte, bar menu and after-work menu. In the adjacent market hall, you can shop for cheese, meat, pickles and other delicacies. Brasserie Fridolf boasts a pleasant view overlooking the river Mieån as well as a spacious outdoor terrace for those who prefer to savour their culinary delights in the open air.

Photo: Visit Blekinge

Address: Ågatan 26, Karlshamn

Phone: +46 454 57 28 00

Internet: [www.brasseriefridolf.se](http://www.brasseriefridolf.se)

Email: [info@brasseriefridolf.se](mailto:info@brasseriefridolf.se)

### Dagmars Hamnkrog



In Hälleviks harbour, just by the sea, you can find lovely fish dishes at Dagmars Hamnkrog. Renowned for their dedication to tradition,

the restaurant preserves the authenticity of fish smoking, crafting delectable dishes with no artificial additives. The menu showcases an array of treasures from the ocean, including smoked salmon, plaice, eel, and other marine delicacies. Guests can savour these tasty creations while seated comfortably on the terrace, immersing themselves in a scenic feast for both the eyes and the palate.

Photo: Visit Blekinge

Address: Strandvägen 13, Sölvesborg

Phone: +46 456 520 50

Internet: [www.hennings-rokeri.se](http://www.hennings-rokeri.se)

Email: [klara@hennings-rokeri.se](mailto:klara@hennings-rokeri.se)

### Ankaret



Discover the epitome of culinary excellence at Restaurant Ankaret within the Best Western Hotel in Karlshamn. Embracing a natural

approach to food, the restaurant places a spotlight on quality, locally sourced, and organic ingredients. With a commitment to authenticity, every dish is crafted from scratch, showcasing a diverse range from slow-cooked delights to timeless classics.

Photo: Restaurang Ankaret/Visit Blekinge

Address: Jannebergsvägen 2, Karlshamn

Opening hours: Mon-Fri 6:30am-2pm / 5:30pm-9:30pm; Sat

7:30am-11am / 5pm-9:30pm; Sun 7:30am-11am /  
3pm-7:30pm  
Phone: +46 454 58 87 08  
Internet: [www.bestwesternkarlshamn.se/atahososs](http://www.bestwesternkarlshamn.se/atahososs)

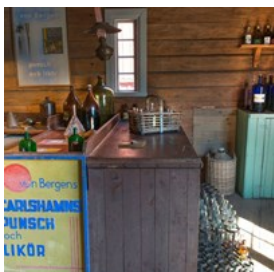
## ARTS & CULTURE



*Susanne Demåne/Visit Blekinge*

Blekinge offers rich art and cultural life. Here, creativity and creative works flourish with a background from both sea and nature, combined with history from a bygone era.

### Karlshamn Museum



The museum is located in Karlshamn's cultural quarter. Here you will find the city museum, the old punsch factory, the tobacco factory, the silversmith's workshop, the printing factory, the art gallery, and the famous songwriter for children Alice Tegner's special room.

Skottbergsska Gården is also in the cultural quarter. It is one of Sweden's best-preserved trading houses with roots from the late 18th century, original adornments and an apartment furnished in the style of that period.

Photo: Karlshamns Kulturkvarter/Visit Blekinge  
Address: Karlshamns Museum, Vinkelgatan 8, Karlshamn  
Phone: +46 454 148 68  
Internet: [www.karlshamnsmuseum.se](http://www.karlshamnsmuseum.se)  
Email: [kontakt@karlshamnsmuseum.se](mailto:kontakt@karlshamnsmuseum.se)

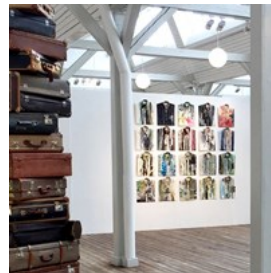
### Martinssonska Gården Art Museum



Open during the summer season, Martinssonska Gården is a beautiful art museum filled with sculptures from Johnny Martinsson, together with pieces by Thure Wahlström, Oscar Wickström and Per Serre.

Photo: Visit Blekinge  
Address: Konstmuseum Martinssonska Gården, Lotsgatan 8, Karlshamn  
Internet: [martinssonskagarden.se](http://martinssonskagarden.se)  
Email: [info@martinssonskagarden.se](mailto:info@martinssonskagarden.se)

### Ronneby Municipality Cultural Centre



Kulturcentrum Ronneby konsthall serves as a central hub for art and cultural activities in Blekinge, hosting an extensive art collection and showcasing temporary exhibitions. With a spacious exhibition area of 1500 square metres, it stands as one of the largest art galleries in southern Sweden.

The cultural centre extends its role beyond visual arts, also functioning as a venue for music, theatre, and various cultural events, fostering a vibrant artistic atmosphere in the region. Additionally, Kulturcentrum Ronneby collaborates with Konst i Blekinge to provide programs, courses, and educational activities, contributing to the cultural enrichment of the community.

Photo: Kulturcentrum i Ronneby/Visit Blekinge  
Address: Kulturcentrum Ronneby konsthall, Kallingevägen 3, Ronneby  
Phone: +46 457 61 75 00  
Internet: [www.ronneby.se/uppleva--gora/kultur/konst/kulturc](http://www.ronneby.se/uppleva--gora/kultur/konst/kulturc)



entrum-ronneby-konsthall.html

## Karlskrona Building Conservation & Furnishings



Karlskrona Byggnadsvård & Inredning is Blekinge's most well-known building conservation shop, occupying the meticulously restored

premises of the historic Karlskrona Lamp factory from 1899. The shop boasts an extensive inventory, featuring linseed oil paint, wallpaper, fittings, lighting, and various traditional building care essentials. Beyond building conservation, the store offers a curated selection of interior details and diverse gift items. Notably, customers can explore the legacy of the Karlskrona Lamp factory, which continues its traditional craftsmanship in manufacturing next door, showcasing a blend of history and contemporary craftsmanship.

Photo: Visit Blekinge

Address: Karlskrona Byggnadsvård & Inredning, Långgatan 11, Karlskrona

Opening hours: Tue-Thu noon-6pm, Fri noon-5pm, Sat 11am-2pm, Sun & Mon closed

Phone: +46 70 961 11 04

Internet: [www.karlskronabyggnadsvard.se](http://www.karlskronabyggnadsvard.se)

Email: [info@karlskronabyggnadsvard.se](mailto:info@karlskronabyggnadsvard.se)

## Malin Mena



Renowned glass artist Malin Mena personally crafts and blows her own glass creations, showcasing her artistic prowess. Located in

Nättraby's old water tower, known as the Glass Tower, her studio offers a unique opportunity to witness the art of glassmaking up close. Visitors can even try their hand at blowing their own

glass under Malin's guidance, gaining insight into her passion for this exquisite craft.

Photo: Visit Blekinge

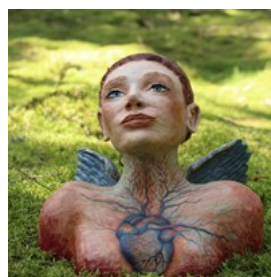
Address: Ekebacksvägen 10, Nättraby

Phone: +46 73 620 08 57

Internet: [malinmena.se/en](http://malinmena.se/en)

Email: [malin@malinmena.se](mailto:malin@malinmena.se)

## Susanne Demåne



In an old school in Edestad, Ronneby, you will find the artist Susanne Demåne and her amazing works. In her studio, you will find

sculptures, paintings, art, princesses, she-devils, angels, and enamels. In the garden, there is a sculpture park, and sometimes it is horse shows and dressage here.

Photo: Susanne Demåne/Visit Blekinge

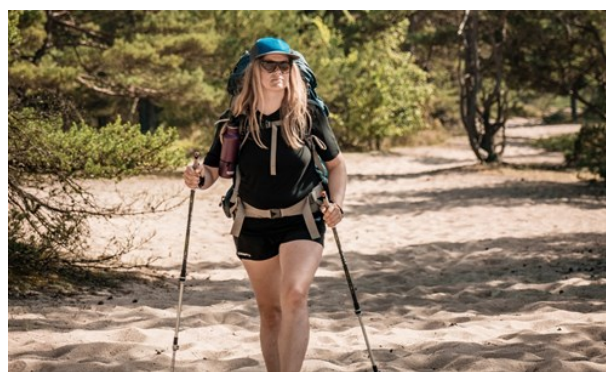
Address: Edestadsvägen 49, Johannishus

Phone: +46 73 372 99 91

Internet: [demane.se](http://demane.se)

Email: [susanne@demone.se](mailto:susanne@demone.se)

## OUTDOOR ADVENTURES



Linda Åkerberg/Visit Blekinge

Blekinge is all about experiencing nature, water and wilderness. The best way to do that is by hiking, biking, or kayaking in the lakes or at the sea.

### ARK56 — Blekinge's Connected Coastal Trails



Designated a biosphere reserve by UNESCO for its unique natural and cultural heritage, ARK56 is a network of trails through the Blekinge

archipelago, spanning bike paths, walking routes, and waterways. Sixteen hubs connect the trails where you can eat, stay overnight and transition between modes of transport as you discover the richness of this distinctive landscape.

Photo: Emil och Daniel/Visit Blekinge

Internet: [ark56.se/en](https://ark56.se/en)

### Lake Halen



Lake Halen, Blekinge's largest lake, encompasses about half its area within a nature reserve, featuring hiking trails, running tracks, riding

paths, rest areas, and wind shelters. Along the eastern shore, near Olofström, Halens Badplats stands out as the region's largest bathing place. Linked to neighbouring lakes like Raslången, Filkesjön, and Immeln, Halen forms part of an extensive water system, attracting canoeists with its numerous branches, bays, and islands. The lake's size and diversity foster a rich fish population, adding to its appeal as a prime fishing destination.

Photo: linda Sjunnesson/Visit Blekinge

### Underwater Trail in Kollevik



Want to know more about life under the surface?

Here is the chance to learn more about plants and animals that live in the water just outside the

coast of Blekinge.

The snorkelling trail is an "underwater path" with information plates on the bottom that can be read from the surface and is situated at the Kollevik bathing area in Karlshamn. The idea of the snorkelling trail is to pay attention to the marine ecosystems and increase the interest in life below the surface. The trail goes through various marine landscapes such as sand and rock bottom. The information is easy to understand and describes the most common species outside Blekinge's coast, but also large-scale Baltic sea problems such as eutrophication, boat bottom paints and overfishing.

The trail is divided into simpler parts in shallow water and a slightly more difficult part in deeper water, however, max. 3 metres. The proximity to the beach makes it possible to interrupt the snorkelling whenever you want.

Photo: Visit Blekinge

Address: Kolleviksvägen 11, Karlshamn

Phone: +46 454 192 80

Internet: [mycamping.se/camping/5/kollevik](https://mycamping.se/camping/5/kollevik)

### Blekinge Walking Trail



Embark on a special journey through the old oak woods and tranquil beech forests with the 255 km long Blekinge Walking Trail, a delight for hiking enthusiasts. The trail offers diverse



landscapes, including the archipelago, lakes, rivers, forests, and nature reserves. Along the way, keep an eye out for fascinating wildlife such as elk, stag beetles, white-tailed eagles, and seals.

Photo: linda Sjunnesson/Visit Blekinge  
Internet: [www.blekingeleden.com](http://www.blekingeleden.com)

### Sydostleden



Sydostleden, a 270-kilometre bicycle route, offers you a varied nature experience from the comfort of your bike saddle. The trail is

divided into seven sections. Choose to cycle one section at a time, merge multiple sections or cycle the whole trail in a sweep. Be sure to make time for many stops along the way.

The route spans from Växjö in Småland to Simrishamn in Skåne, southern Sweden. In Blekinge, there are 2 sections: Fridafors-Karlshamn and Karlshamn-Sölvesborg.

- Fridafors-Karlshamn, do not miss the Abu Museum in Svängsta. It tells the story of the Abu factory, which stopped manufacturing watches and taxi metres to concentrate on fishing equipment. At Svängsta, the landscape changes character from woodland to open countryside. The countryside along the coast is the lowest stage in Blekinge.

The port and market town of Karlshamn was founded in 1664. It was in Karlshamn that Kristina from Duvemåla and her Karl Oskar (from the novels by Vilhelm Moberg) boarded the Brig Charlotta, which took them across the Atlantic to America. The Emigrant Monument in

the Harbour Park has been erected in memory of those who emigrated from Sweden. In the harbour, there is also a maritime museum.

With its location by the sea, Karlshamn is a popular bathing and holiday destination. An open-air bath with exciting new architecture was opened in 2015. From the centre, there are boats to the island fortress of Kastellet and the other islands in the archipelago.

- Karlshamn-Sölvesborg: An old, solid stone arch bridge crosses the River Mörrumsån. Mörrum is the centre of the river's famous salmon fishery, which has been well-known since the thirteenth century. Continue cycling towards the villages of Mörrum and Norje. By the time you reach Norje, you are actually located in the very middle of the Sydostleden trail, this is where you will find the halfway point.

In the city of Sölvesborg, the trail takes you over the 760-metre long Sölvesborg Bridge, which connects Listerlandet with the town, and is Europe's longest pedestrian and bicycle bridge. In the area around the main square, Stortorget, you will find many shops, restaurants and cafés.

Photo: Bengt Nyberg/Visit Blekinge  
Internet: [sydostleden-sydkustleden.se/en](http://sydostleden-sydkustleden.se/en)

### Eriksberg Hotel & Nature Reserve



Go on a safari tour at Eriksberg's Wildlife Park and see wild animals in their natural habitat. Red deer, fallow deer, Père David's deer, European bison, wild boar and moufflon roam freely in this unique nature reserve in the archipelago. The tour goes through a fascinating rocky landscape

of oak woodlands, dense hornbeam woodlands and knotty conifers. There is a rich bird life as well, and one of the world's largest stocks of the protected red water lily. The park consists of more than 925 hectares, of which 409 hectares of water. The fenced portion is about 900 hectares, which means that Eriksberg is one of northern Europe's largest wildlife reserves.

Photo: Eriksberg/ Visit Blekinge  
Address: Guöviksvägen 353, Trensum  
Phone: +46 454 56 43 00  
Internet: [www.eriksberg.se](http://www.eriksberg.se)  
Email: [info@eriksberg.se](mailto:info@eriksberg.se)

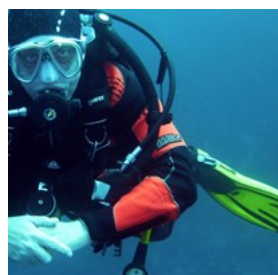
### Old Railway Embankment Trail (Halmstad – Karlshamn)



Embark on a captivating journey along the old railway embankment trail, spanning approximately 250 km and connecting Halmstad to Karlshamn. This multi-faceted trail traverses diverse landscapes, guiding you through Halmstad's and Karlshamn's picturesque coastal areas, the Simlångs Valley, and alongside the enchanting lakes Bolmen and Åsnen. The journey concludes with a scenic stretch along the Mörrum River, renowned as one of the world's premier salmon fishing waters.

Photo: Jens Lennartsson/Visit Blekinge  
Internet: [www.banvallsleden.se](http://www.banvallsleden.se)

### Wreck Diving in the Baltic Sea

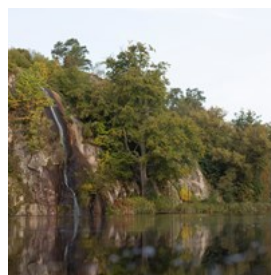


Embark on an extraordinary underwater adventure by diving after wrecks from the 18th century while also enjoying direct contact with seals. Karlskrona's strategic location has

contributed to its rich marine history, and the wrecks remain in excellent condition, thanks to the pristine waters surrounding the city.

Photo: Visit Blekinge  
Address: Dragsövägen 14, Karlskrona  
Phone: +46 455 153 54  
Internet: [www.visitblekinge.se/vrakdykning-i-ostersjon-blekin-g-outdoor](http://www.visitblekinge.se/vrakdykning-i-ostersjon-blekin-g-outdoor)  
Email: [info@blekingeoutdoor.se](mailto:info@blekingeoutdoor.se)  
More Info: Only for experienced divers

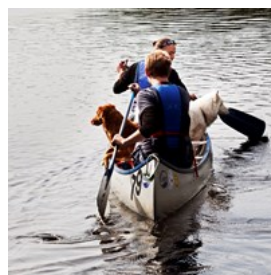
### Brunnsskogen Nature Reserve



Explore the abundance of recreational opportunities in Brunnsparken and the Brunnsskogen nature reserve, offering picturesque walking and cycling paths. The park and forest boast a green environment with marked trails, including Hälsans stig, a specially constructed 4 km walking and exercise trail in Brunnsskogen. Wander through the leafy forest, encountering unique experiences such as the lake Trollsjön. Additionally, the renowned Blekinge Walking Trail stage 7 starts in Brunnsparken, where Naturum in Villa Gymnastiken serves as a visitor centre, providing exhibitions and information about the rich natural heritage of Blekinge.

Photo: Visit Blekinge  
Address: Rustorpsvägen 4-8, Ronneby

### Olofströms Fritidsklubb Canoe Center



Go on an extraordinary outdoor adventure in Olofström, home to one of Sweden's premier outdoor experiences. At Olofströms Fritidsklubb Canoe Center, you can rent both canoes and kayaks, offering a chance to paddle across the

shimmering Halen, Blekinge's largest lake. Navigate the picturesque canoe trail connecting Halen, Raslängen, Gill Lake, and Filkesjö, immersing yourself in the enchanting scents of the pristine forest. For a truly magical experience, consider camping under the stars, surrounded by Blekinge's stunning natural beauty. Conveniently located next to Halens Campsite, the Canoe Center provides easy access to a charming camping ground and cosy cottages.

Photo: Visit Blekinge

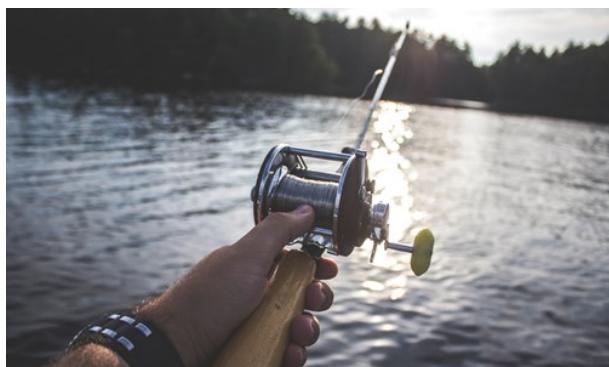
Address: Strandvägen 14, Olofström

Phone: +46 454 402 80

Internet: [halenkanot.com/en/start-en](https://halenkanot.com/en/start-en)

Email: [info@halenkanot.com](mailto:info@halenkanot.com)

## FISHING IN BLEKINGE



Brady Rogers/Unsplash

The whole of Blekinge is like a single large fishing centre with a great breadth of fishing experiences, all within an hour's radius by car. There are plenty of professional well-maintained fishing facilities with accommodation and guides.

### Camp Dragsö Sportfishing



Camp Dragsö Sportfishing specialises in exclusive fishing experiences in the Karlskrona archipelago, renowned for its

world-class pike-rich waters. The camp offers a variety of fishing trips with cabins and a fleet of 19 boats, including 15 five-metre aluminium boats with motors ranging from 30 to 50 horsepower. Fishing enthusiasts can also rent fishing kayaks to explore the archipelago at a leisurely pace. For convenience, a small fishing shop is available for those needing additional equipment. Full-service restaurants in the area provide amenities for a complete and enjoyable fishing getaway.

Photo: Dragsö camping/Visit Blekinge

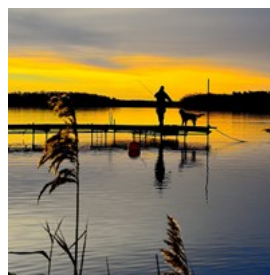
Address: Dragsövägen Dragsö, Karlskrona

Phone: +46 455 153 54

Internet: [www.dragsosportfishing.se](https://www.dragsosportfishing.se)

Email: [info@dragso.se](mailto:info@dragso.se)

### Angling at Sandhamn Marine



Sandhamn Marine, situated along the South Sweden coast in the eastern part of Blekinge, is a fishing haven comprised of ten sea

cottages nestled in Sandhamnsviken, ensuring an unparalleled closeness to the sea with boats moored right in front of each cottage. The Karlskrona archipelago, renowned for hosting one of Sweden's largest pike populations, offers year-round opportunities for anglers to reel in robust pike of various sizes, including during the summer. In addition to pike, the waters boast excellent sea trout and perch fishing. For those trolling for salmon, the harbour serves as an ideal starting point, spanning the area between Utklippan and Hasslö, making Sandhamn Marine an ideal retreat for coastal charm and exceptional fishing experiences.

Photo: Pike Strike/Visit Blekinge

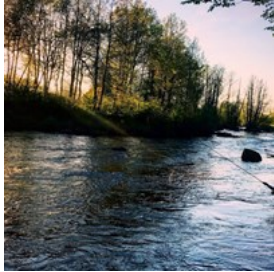
Address: Brändaskärsvägen 10, Torhamn

Phone: +46 455 514 00



Internet: [sandhamnmarine.se/en](https://sandhamnmarine.se/en)  
Email: [info@sandhamnmarine.se](mailto:info@sandhamnmarine.se)

### Mörrum Salmon Fishing



Dating back to 1231, Mörrum's salmon fishing has become a global attraction, drawing anglers from every corner of the world. Visitors

come in pursuit of the region's renowned, well-developed salmon and sea trout. With 10,000 fishing days and 250,000 visitors annually at Laxens Hus, Mörrum stands as one of Blekinge's largest and most visited tourist attractions, showcasing the enduring allure of its rich fishing heritage.

Photo: Mörrums Kronolax/Visit Blekinge  
Address: Kvarnvägen 1, Mörrum  
Phone: +46 454 501 23  
Internet: [www.sveaskog.se/morrum](https://www.sveaskog.se/morrum)  
Email: [morrum@sveaskog.se](mailto:morrum@sveaskog.se)

### PikeStrike Sweden



The Ronneby and Karlskrona archipelagos stand as havens for pike enthusiasts, boasting the largest local population along the Swedish Baltic

coastline. PikeStrike Sweden, renowned pike fishing experts, provide an exceptional experience in 'Pike Land.' Equipped with the best-suited boats and fishing kayaks, PikeStrike Sweden ensures a seamless experience for tough pike fishing in the sea. Anglers can anticipate capturing robust and golden pike of various sizes, as the excellent pike fishing extends across all seasons, even during the hottest summers.

Photo: Gunnar Ahlström/Visit Blekinge  
Address: Torkö 52, Listerby

Phone: +46 70 592 08 68  
Internet: [www.pikestrikesweden.se](https://www.pikestrikesweden.se)  
Email: [pikestrike@hotmail.com](mailto:pikestrike@hotmail.com)

### Harasjömåla Fishing Camp



Located in the middle of Sweden's southernmost wilderness, Harasjömåla Fishing Camp offers an angler's paradise with access to 23 lakes and

flowing waters, providing a diverse fishing experience. The camp is well-known for its put-and-take fishing for rainbow and trout, while also offering opportunities to catch pike, perch, and whitefish. With its easily accessible location, Harasjömåla welcomes both beginners and seasoned professionals. The expansive area accommodates various fishing styles, including spinning, angling, and fly fishing.

Photo: Harasjömåla Fiskecamp/Visit Blekinge  
Address: Gillesnäsavägen 39, Olofström  
Phone: +46 454 470 50  
Email: [harasjomala@oktv.se](mailto:harasjomala@oktv.se)

### Fish Shop Mörrum



The fishing shop's staff will make sure you get the right gear for your next fishing trip. They have many different brands and are experts in

completing the right setup for the clients. Expect great service, fishing tips and tricks, warm coffee and a great selection of flies, lines, baits, rods, waders and much more.

Photo: Mörrums Kronolax/Visit Blekinge  
Address: Kvarnvägen 1, Mörrum  
Phone: +46 454 507 10  
Internet: [fiskeshopen.com](https://fiskeshopen.com)  
Email: [info@fiskeshopen.com](mailto:info@fiskeshopen.com)

### Brokamåla Farm



Brokamåla Gård offers an exclusive and thrilling fishing experience amidst the serene embrace of nature. With access to over 25 lakes, the farm

provides a picturesque setting for anglers to indulge in their passion. Boats are readily available for those seeking to explore the tranquil waters, while bathing options and scenic hiking areas add to the overall charm of this retreat.

Photo: L-Sällström/Visit Blekinge

Address: Nytebodavägen 337-7, Olofström

Phone: +46 709 14 93 94

Internet: brokamala.se

Email: info@brokamåla.se

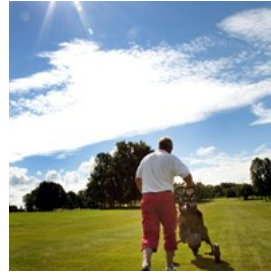
## SWEDEN'S GOLF COAST



Lars Nyman/Visit Blekinge

Blekinge is maxed out with great golfing experience. Dotted along the coast are no less than 8 golf courses within a 120 km radius, hence calling it Sweden's Golf Coast is no exaggeration. It's the perfect place to adapt your game to different challenges like wind, weather, and the various characteristics of the golf courses. The short distance means you can maximise your playing time, try out several courses, and still have time to return to your favourite course for one more round.

### Boa Olofström Golf Club



Boa Olofström Golf Club offers a tranquil golfing escape with its 18-hole park and forest path, set amidst the serene rural landscapes, far away

from the hustle and bustle of city noise. Nestled in the heart of Sweden's southernmost wilderness, the course is surrounded by pristine lakes, deep forests, and expansive open landscapes, all easily accessible from the course.

Photo: Visit Blekinge

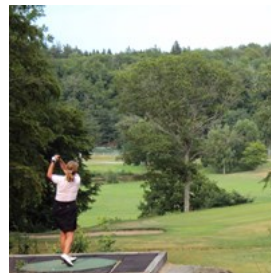
Address: Boa Nygårdsvägen 150, Olofström

Phone: +46 454 433 66

Internet: boagk.se/en

Email: boagk@oktv.se

### Ronneby Golf Club



Ronneby Golf Club is an extension of the award-winning Ronneby Brunnspark and is an undeniably beautiful park course. Ronneby Golf

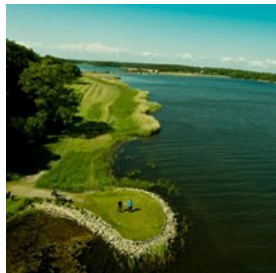
Club is also a natural choice for children and young people to train, play and socialise. Right next door is the Ronneby Brunnbad with a water park, mini golf course, tennis courts and vast areas for fun and relaxation.

Photo: Lena Israelsson/Visit Blekinge

Address: Reddvägen 14, Ronneby

Phone: +46 457 125 50

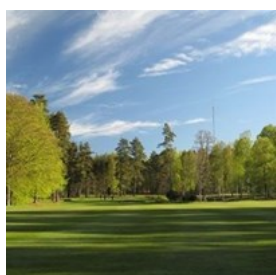
### Carlskrona Golf Club



Carlskrona Golf Club, Sweden's third-oldest, is nestled in the heart of the stunning Blekinge Archipelago on Almö. The golfing experience here is uniquely characterised by 100% panoramic views of the sea and archipelago. Set within a nature reserve rich in ancient cultural remnants from the early Iron Age, the course offers not only a visual feast but also a historical journey. The beautifully maintained course emphasises quality, complemented by amenities such as a restaurant, a shop, a state-of-the-art swing studio, and comprehensive training facilities at the range. For those seeking an extended stay, the golf club provides a campsite, cottages, and a 12-bed house.

Photo: Visit Blekinge  
Address: Almö, Nättraby  
Phone: +46 457 351 23  
Internet: [www.carlskronagk.com](http://www.carlskronagk.com)  
Email: [info@carlskronagk.com](mailto:info@carlskronagk.com)

### Karlshamn's Golf Club



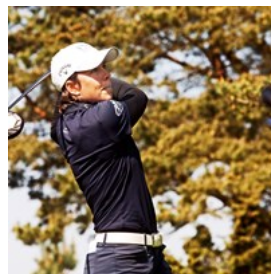
Karlshamn's Golf Club is a pearl on the beach of the Mörrum River with its 36 holes in forest and park nature. The course runs in a mix of deciduous and coniferous forests where each hole is beautifully embedded. The new course is a little narrower than the old one and will be a challenge for those who want to find strategic paths.

Photo: Visit Blekinge  
Address: Karlshamns Golfklubb, Kylingaryds byväg 85-20, Mörrum  
Phone: +46 454 500 85

Internet: [www.karlshamnsgk.com](http://www.karlshamnsgk.com)

Email: [info@karlshamnsgk.com](mailto:info@karlshamnsgk.com)

### Nicklastorp Golf Club



Nicklastorps Golf Club offers a family-oriented golfing experience set against the backdrop of park and forest paths in hilly terrain. The course

design seamlessly integrates the natural surroundings, with the first nine holes winding through a primary forest environment. The landscape then transitions to a more open terrain for the last nine holes.

Photo: Lars Nyman/Visit Blekinge  
Address: Nicklastorp 1, Karlskrona  
Phone: +46 455 134 54  
Internet: [www.nigk.se](http://www.nigk.se)  
Email: [kansli@nigk.se](mailto:kansli@nigk.se)

### Leråkra Golf Club



Leråkra Golf Club is a welcoming golf resort with a special emphasis on providing affordable family-friendly golf experiences. The club

offers the flexibility to play various loops of 9, 12, or 18 holes, catering to golfers of all skill levels.

Photo: Visit Blekinge  
Address: Leråkra 7A, Ronneby  
Phone: +46 457 360 81  
Email: [info@lerakragolf.se](mailto:info@lerakragolf.se)



### Trummenäs Golf Club



Trummenäs Golf Club presents a unique golfing experience with two seaside courses boasting breathtaking ocean views from every hole. The

short course is accessible under the Pay and Play where all are welcome regardless of previous knowledge. Situated in the archipelago, the golf club offers the chance to play almost year-round, influenced by the archipelago environment, ensuring a rare mix of minimal rain, frequent sun, and wind. With an expansive driving range, Trummenäs provides excellent training facilities. As a bonus, Karlskrona, where the club is located, proudly holds the title of the sunniest city in Sweden, adding to the allure of this golfing destination.

Photo: Trummenäs GK/Visit Blekinge

Address: Trummenäs Golfklubb, Ramdala

Phone: +46 455 36 05 05

### Sölvesborg Golf Club



Sölvesborgs Golf Club, recognised as Sweden's best golf course in 2014, is a picturesque haven along the coastline. The course's charm lies in its

tree-lined fairways, offering not only a serene setting but also stunning sea views from many holes. The grand finale on the 18th hole unfolds with Sölvesborgs Bay, providing a captivating vista towards the city of Sölvesborg.

Photo: Visit Blekinge

Address: Ljunganabbevägen 149, Sölvesborg

Phone: +46 456 706 50

Internet: [www.solvesborgsgk.se](http://www.solvesborgsgk.se)

Email: [info@solvesborgsgk.se](mailto:info@solvesborgsgk.se)

## TOURIST INFORMATION



Helena Schütz/Visit Blekinge

### Ronneby Airport



Located in Kallinge, about 8 kilometres north of Ronneby, Ronneby Airport (RNB) is a key international gateway for the region, easily

accessible via transfer buses that stop at the airport. Information about public transportation options can be found on Blekingetrafiken's website.

Daily flights connect Ronneby Airport to Stockholm, serving both Bromma and Arlanda airports with a flight duration of approximately 50 minutes. The airport is strategically positioned, with distances of 33 kilometres to Karlskrona, 32 kilometres to Karlshamn, 60 kilometres to Olofström, and 59 kilometres to Sölvesborg.

Photo: Ronneby Airport/Visit Blekinge

Address: Ronneby Airport, Bredåkravägen 26, Kallinge

Phone: +46 10 109 54 00

Internet: [www.swedavia.com/ronneby](http://www.swedavia.com/ronneby)

More Info: [www.sas.se](http://www.sas.se)

### Passport/Visa



Sweden can be visited visa-free for up to 90 days by citizens of most European countries, Australia, New Zealand, Japan, South Korea, Taiwan, Malaysia, Israel, UAE and most countries in America. If you are unsure whether or not you need to apply for a visa, we recommend contacting the embassy or consulate in your country. International (non-Schengen) travellers need a passport that is valid for at least 3 months after the end of their intended trip in order to enter the Schengen zone. Citizens of Schengen countries can travel without a passport but must have a valid ID with them during their stay.

Photo: ConvertKit/Unsplash

### Post



In Sweden, supermarkets, newsagents, and petrol stations act like postal service agents. Here you will be able to buy stamps, envelopes and many more postal services that are offered.

Photo: Ali Bakhtiari/Unsplash

### Guest Harbours & Blue Flag



If you see a blue flag flying at a guest harbour or bathing beach that you are visiting, it means that it is well-managed, clean and has the least possible impact on the environment. They must also meet service, information and safety requirements. The guest harbours at both Kristianopel and

Hanö have Blue Flags.

Photo: Visit Blekinge

### Taxi



Karlshamns Taxi AB: +46 454 150 65  
Trossö Taxi (Karlskrona): +46 455 410 00

Photo: Visit Blekinge

### Electricity



Standard voltage is 230 volt / 50 hz and plugs and sockets are type F.

Photo: Visit Blekinge

### Public Transport



Blekingetrafiken runs public bus services across municipalities in Blekinge, covering central towns and urban transport in Karlskrona, Ronneby, Karlshamn, and Sölvesborg.

City bus services operate in Karlskrona (lines 1-9 and 12), Ronneby (lines 1-4), and Karlshamn (lines 1-3). The express bus, Kustbussen, provides quick and comfortable travel between Blekinge's central towns, Kalmar, and Växjö, with modern double-decker buses servicing key routes, including Karlskrona-Ronneby-Karlshamn-Olofström (line 600) and Karlskrona-Kalmar (line 500). Line 600,

the Coastal bus, complements the Öresund train service, ensuring a half-hourly service throughout Blekinge.

Photo: Visit Blekinge

Internet: [www.blekingetrafiken.se](http://www.blekingetrafiken.se)

#### **Population**

158,740 (2022)

#### **Currency**

Swedish Krona (Svensk krona, pl. Svenska kronor), SEK

#### **Internet**

[www.visitblekinge.se/en](http://www.visitblekinge.se/en)

#### **Newspapers**

Blekinge Läns Tidning: [www.bl.t.se](http://www.bl.t.se)

Sydöstran: [www.sydostran.se](http://www.sydostran.se)

#### **Emergency numbers**

112

#### **Tourist information**

Blekinge consists of 5 municipalities and each municipality's tourist information can be contacted here:

- Karlskrona Tourist Centre  
Skeppsbrokajen 10, Karlskrona  
Phone: +46 455 30 34 90  
Email: [visit@karlskrona.se](mailto:visit@karlskrona.se)  
Web: [www.visitkarlskrona.se/en](http://www.visitkarlskrona.se/en)

- Ronneby Tourist Office  
Västra Torggatan 1, Ronneby  
Phone: +46 457 61 75 70  
Web: [www.visitblekinge.se/ronneby](http://www.visitblekinge.se/ronneby)

- The Tourist Information Centre in Karlshamn is open for visitors during June, July and August at Hamngatan 5. At other times of the year, you can reach them via phone, email and chat.

Phone: +46 454 812 03  
Email: [visit@karlshamn.se](mailto:visit@karlshamn.se)  
Web: [www.visitkarlshamn.se](http://www.visitkarlshamn.se)

- Sölvesborg Tourist Office  
Repslagaregatan 1, Sölvesborg  
Phone: +46 456 81 61 81  
Web: [www.visitblekinge.se/solvesborg](http://www.visitblekinge.se/solvesborg)

- Olofström Tourist Office  
Web: [www.visitblekinge.se/olofstrom](http://www.visitblekinge.se/olofstrom)