



Christmas Island

in collaboration with Christmas Island Tourism Association (CITA)

Photo: Christmas Island Tourism Association



Christmas Island Tourism Association



Christmas Island Tourism Association



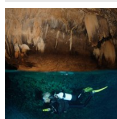
Christmas Island Tourism Association

Rising majestically from the tropical depths of the vast Indian Ocean, and surrounded by the azure waters of Asia's southern fringe lies a stunning natural wonder - Christmas Island ...

Its name alone is intriguing and stirs interest. This tiny island in the Indian Ocean is a truly fascinating paradise, inviting you to uncover its remarkable surprises of nature in a one-of-a-kind environment.

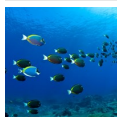
Venture to this awe-inspiring island for an unforgettable getaway.

Featured



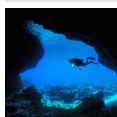
ThunderCliff Cave

The unique geography of Christmas Island lends itself to underwater caves an...



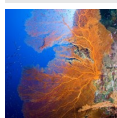
The Morgue

A morbid name for a fantastic dive site, The Morgue is home to some of the l...



West White Beach Cave

Another of the caves that honeycomb the limestone cliffs of Christmas Island...



Perpendicular Wall

As the name of this dive site implies, here you'll find a wall that falls dr...

Eidsvold Wreck

The Eidsvold was previously a Norwegian phosphatase ship but was struck by a Japanese submarine during World War II. It

Top 5



The Dales

The Dales is one of the Island's iconic sites and one of the few places with...



Scuba Diving

Christmas Island's narrow fringing reef supports bountiful marine life, incl...



Dolly Beach

If you could draw an almost perfect Robinson Crusoe style beach, Dolly would...



Bird'n'Nature Week

Once a year, generally in the first week of September, Bird'n'Nature week pa...



Fishing

On the world map of fishing locations, Christmas Island may only rate a smal...

A MULTICULTURAL HERITAGE



Christmas Island Tourism Association

Christmas Island

The capital of Christmas Island is known as "The Settlement". For many island residents, life centres around Flying Fish Cove, its port, jetty and the towering presence of the loading dock and buildings owned by Christmas Island Phosphates.

Christmas Island is very much an Australasian nation. It may be governed by Australia, but it's roots lie in the short but eventful years of colonial rule. To really see each of the town and their inherent cultural differences and similarities, take time to explore. If you can, walking tours will give the best opportunities to see all the sites of historical importance.

Christmas Island is made up of a cluster of small communities, influenced equally by the past and the potential future.

Despite a background typical of European discovery and colonisation, this tiny island is possibly one of the worlds' most multicultural. People have come from Singapore, China, Malaysia, Indonesia, Japan and India. Indigenous Cocos Malays cover over in the early days of colonisation and in recent years, people have come from England, Wales, Italy and

Switzerland. There's even a few Australians thrown in for good measure. This is a very thorough melting pot.

For visitors, its both a surprise and an absolute pleasure to see so many ethnic groups co-existing peacefully. There is a level of tolerance and co-operation between these groups that you see rarely, if at all, in the world.

The mixture also makes for an interesting holiday. Although the ethnic groups tend to cluster into one town or another, this is more of a habitual stance than a political one. You can see this on festival days when all the island's residents are happy to share an enjoy each others cultures. Whenever a holiday comes around - and there is virtually one every month - almost everyone takes part. Chinese New Year, Hari Raya and Christmas Day are events that give equal cause for celebration.

Flying Fish Cove, Christmas Island

Flying Fish Cove is the beach to head for if you have children or want plenty of facilities. Sitting at the base of a soaring, semicircle of jungle clad walls, this natural harbour is a perfect swimming spot despite being neatly dissected by the island's main jetty.

A grassy promenade sits above the narrow stretch of sand and pebbles. There are bench seats and gazebos for shade, freshwater showers and public barbeques. These are completely free, but the etiquette is clear, if you use them, please clean up.

TOP 10



Christmas Island Tourism Association

Christmas Island

Christmas Island is a nature-lover's dream and you'll be spoilt for choice when it comes to the huge range of nature based activities available. Perhaps you'll need more than one trip !!

So whether you are visiting to witness the magic of the red crab migration, discover the rainforests' huge robber crabs, dive with whalesharks, relax on deserted beaches, or photograph a Golden Bosun in its regal flight, knowing what to expect ensures you get the best out of your escape.

Here are our Top 10 Christmas Island Experiences:

The Dales



The Dales is one of the Island's iconic sites and one of the few places with permanent flowing water and stunning wet areas, providing significant

habitat for endemic blue crabs and impressive stands of Tahitian chestnut trees. The drive through the Dales leads through rainforest to a scenic and tranquil area, which has two walking

trails starting from the Dales 4WD car park. The first is mostly a boardwalk, leading to Hugh's Dale Waterfall which is 1km each way from the car park. Signage along the trail offers information on the island's plants and animals.

For the adventurous, a second trail leads on from Hugh's Dale for about 800m to Anderson's Dale, a small gorge with a small stream that flows to the sea.

Photo: William Patino, Christmas Island Tourism Association

Scuba Diving



Christmas Island's narrow fringing reef supports bountiful marine life, including 88 coral species and more than 600 species of fish. It's an

underwater wonderland for divers, with clear warm waters, coral reefs and spectacular wall dives. Soft corals, feather stars and gorgonian corals grow along vast walls which plunge into a seemingly bottomless abyss.

The fish community is distinctive because the island is a meeting place for Indian and Pacific Ocean fish species – it's one of the few locations in the world where you'll see Indian and Pacific Ocean fish swimming side by side. Some of these species interbreed to produce hybrids. Christmas Island has more hybrid fish than anywhere else in the world, making it a marine hybridisation zone of international significance.

In addition to the hundreds of species of tropical fish, dolphins inhabit the island's waters and whale sharks regularly visit during the wet season. Whale sharks generally first appear

when the red crabs are spawning at the start of the wet season — they converge to supplement their plankton diet with crab larvae. Locations such as Flying Fish Cove, Ethel Beach, Dolly Beach, West White Beach, and Winifred Beach offer scuba divers and snorkellers a rewarding marine experience. At Flying Fish Cove and Ethel Beach shore diving is possible depending on the time of the year. There is excellent fishing, with sailfish, tuna and wahoo among some of the fish to be caught. You'll find boat ramps at Flying Fish Cove and Ethel Beach.

Photo: Christmas Island Tourism Association

Address: Christmas Island

Internet:

www.christmas.net.au/experiences/scuba-diving.html

Email: cita@christmas.net.au

Dolly Beach



If you could draw an almost perfect Robinson Crusoe style beach, Dolly would definitely be a contender. Natural food supplies, shelter, and a source of freshwater would keep most castaways happy, and this beach has been known to do just that. As you arrive, especially if you are the first person of the day, you may be drawn to the turtle tracks in the sand. You can follow them until you find the signs of a nest. Both hawksbill and green turtles have been spotted.

At the northern end of the beach the hills are marked by fantastic rock formations with plenty of resident seabirds. More interesting though are the sea level rock pool formations. Wave crash over the golden-toned, stony reef edges, which doesn't discourage the marine life. Red algae and small hard corals paint different colours across the surfaces, while small fish dart

about between the pools. Tiny moray eels hunt in ankle-deep water, and if you stay still they will swim up to you.

The opposing end of the beach has slightly deeper pools to explore and - depending on the tides - these allow safe, shallow swimming. Going over the rocks to the sea isn't advised, as currents can be strong.

Photo: Christmas Island Tourism Association

Bird'n'Nature Week



Once a year, generally in the first week of September, Bird'n'Nature week participants will be invited in small groups to help catch Abbott's

Boobies high in the rainforest canopy, assist to colour-band Brown Boobies and monitor their colonies on the remote and secluded rocky coasts.

Participants will work with our internationally renowned guides to study the nesting biology and foraging ecology of Christmas Island Frigatebirds and Red-tailed Tropicbirds. Depending on interest and demand, there will also be opportunities to assist in the colour-banding of Christmas Island Goshawks, a Christmas Island Hawk-Owl survey, seabird identification workshops, territory mapping of Island Thrushes and closer looks at the island's other wildlife.

And of course there will be the chance to search for a few of those rarities for which Christmas Island is so famous.

Nightly seminars will showcase the results of all

the seabird research (revealing the wanderings of the majestic Abbott's Booby, CI Frigatebirds and more), the status of the endemic landbirds, the rarities of Christmas Island, and the marine and terrestrial ecology of the island.

Photo: Christmas Island Tourism Association

Address: PO Box 63

Phone: +61439215001

Internet: www.christmas.net.au/experiences/bird-watching/bird-n-nature-week.html

Email: marketing@christmas.net.au

Fishing



On the world map of fishing locations, Christmas Island may only rate a small dot, however fish being caught here are making a big mark amongst the international fishing fraternity. The secret is out... anglers around the world are starting to find out that Christmas Island is the hottest new spot for big fish in South East Asia.

Within a few hundred metres of the boat launching facilities, it is possible to fish in thousands of metres of water for Sailfish, Tuna, Wahoo and all the other exciting species that you usually find in tropical locations. The difference is that on Christmas Island the fish are BIG, very BIG!

When the ocean currents bring the the tuna in, it is possible to see fish in excess of 100kg feeding on the surface. While the Yellowfin Tuna roam and pass the island quite regularly, Dogtooth Tuna live permanently on the steep drop-offs that surround Christmas Island and we've seen them up to 80kg landed. Or if you prefer the high flying aerial displays of a sailfish, during the

pre-monsoon months some of the biggest Sailfish in the world are to be found at Christmas Island. Even trolling within a few hundred metres of the shoreline you will find the razor gang. Wahoo are the fastest fish in the world and Christmas Island is their favorite race track!

Photo: www.christmas.net.au

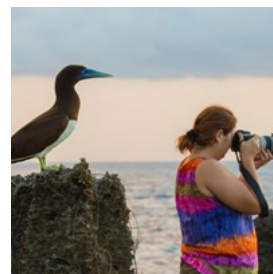
Address: PO Box 63

Phone: +61891648382

Internet: www.christmas.net.au/experiences/fishing.html

Email: marketing@christmas.net.au

Photography



It's hard to imagine a more visually tantalising place to photograph than Christmas Island. All around you are sights, colours, textures and

landscapes you'll want to capture, so bring nature to life through your lens. From soft, pastel sunrises to glorious sunsets, Christmas Island is bathed in ever-changing tropical light. Vivid colour is everywhere, from the crabs' rich reds to the rainforest's deep greens, to turquoise waters. Catch the robber crabs on film, zoom in on gentle orchids and twisting vines, and train your lens skywards to capture the elegance and freedom of rare birds in flight.

Underwater photographers have a kaleidoscope of colours and shapes to shoot. On land the imposing, inspiring and detailed architecture of temples and other built form keeps shutters clicking.

Video cameras capture the sights and sounds of millions of scurrying red crabs, or the hauntingly musical call of the island's thrush, and the stirring call to prayer from the mosque.

Best spots for best shots

Martin Point – for staggeringly beautiful sunsets and seabirds.

Blowholes – capture the energy of the water on a rugged coastline.

Dolly Beach – impressively large robber crabs plus turtle tracks.

Hughes Dale Waterfall – an iconic island place for your unique shot.

Blowholes Road – get creative with a special tree along the road.

Greta Beach – nesting turtles all year round make wonderful pictures.

Island temples – rich colours fused with wisps of incense smoke.

Tai Jin House – capture the detail of this building and its gardens.

Flying Fish Cove – for underwater photography.

Photo: Christmas Island Tourism Association

Address: PO Box 63

Phone: +61439215001

Internet:

www.christmas.net.au/experiences/photography.html

Email: marketing@christmas.net.au

Golf - Island Style



Golf is one of the favourite pastimes of Islanders and the Golf Course is well worth a try for professional golfers or first timers. The 9-hole golf course is situated amongst palm trees and tropical rainforest with a magnificent view of the Indian Ocean. Green Fees of \$10 per round are payable for non-members. Clubs are available for hire from the Christmas Island Visitor's Centre and visitors are most welcome. Christmas Island Frigates nest inland from the course and land crabs can be a local hazard.

Christmas Island Golf Open 2017

If you fancy hitting a club amidst a spectacular backdrop with little red crabs crawling the greens, the Christmas Island Golf Open is the event you should be a part of. Hosted by the Christmas Island Golf Club and sponsored by Acker, experience playing golf on one of the most remote Australian Golf Courses, meet the locals and enjoy a series of competitive events which will ensure you get the most of your visit to the island.

Further information on the 2017 Golf Open (19 - 21 May) will be available soon ...

Photo: Christmas Island Tourism Association

Address: PO Box 63

Phone: +61891648382

Internet: www.christmas.net.au/experiences/golf.html

Email: marketing@christmas.net.au

Red Crab Migration



Tens of millions of red land crabs live on Christmas Island. They are the Island's keystone species, because they play a vital role recycling nutrients and shaping and maintaining the structure of the rainforest.

At the beginning of the wet season (usually October / November), most adult Red Crabs suddenly begin a spectacular migration from the forest to the coast, to breed and release eggs into the sea. Breeding is usually synchronized island wide. The rains provide moist overcast conditions for crabs to make their long and difficult journey to the sea. The timing of the migration breeding sequence is also linked to the

phases of the moon, so that eggs may be released by the female Red Crabs into the sea precisely at the turn of the high tide during the last quarter of the moon. It is thought that this occurs at this time because there is the least difference between high and low tides. The sea level at the base of the cliffs and on the beaches, where the females release their eggs, at this time varies the least for a longer period, and it is therefore safer for the females approaching the water's edge to release their eggs. Sometimes there are earlier and later migrations of smaller numbers of crabs but all migrations retain this same lunar rhythm.

The main migration commences on the plateau and can last up to 18 days. Masses of crabs gather into broad "streams" as they move toward the coast, climbing down high inland cliff faces, and over or around all obstacles in their way, following routes used year after year for both downward and return migrations. Movement peaks in the early morning and late afternoons when it is cooler and there is more shade. If caught in open areas, in unshaded heat, the crabs soon lose body water and die.

Possible Spawning Dates 2016

The possible spawning dates for 2016 are:

24/25/26 November 2016

24/25/26 December 2016

Spawning can happen as early as October and as late as January but November and December are the more usual months.

The migration comprises a sequence of events that follow on from one and other in a distinct order - a following sequence cannot be

undertaken without the crabs having accomplished the preceding.

The crabs will migrate to the coast where the males will dig mating burrows and they will mate. After mating, the males will commence their return migration. The females will brood their eggs for 12-13 days before emerging from the burrows to commence spawning. The females will commence their return migration immediately after spawning.

The eggs hatch into free swimming larvae immediately after they are dropped into the sea. The larvae grow through several stages in the ocean for over four weeks before emerging from the sea to become tiny crabs.

Photo: Christmas Island Tourism Association (CITA)

Address: Christmas Island

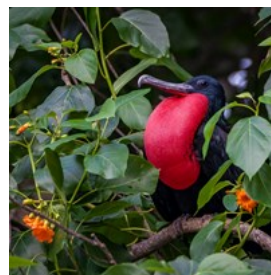
Internet:

www.christmas.net.au/experiences/red-crab-migration.html

More Info: Parks Australia, Christmas Island -

<http://www.parksaustralia.gov.au/christmas/>

Birdwatching



Birds Christmas Island
Christmas Island is one of the world's truly spectacular tropical seabird rookeries. It's not just the number and variety of seabirds or their magnificent splendour that make the island so remarkable, but also their sheer visibility.

Around 80,000 seabirds nest here annually, with 23 breeding or resident species. Birds can be seen and heard everywhere on the island, at just about any time of the day.

With a little effort birdwatchers can easily tick

off a full list of residents in a busy week or a more relaxed fortnight - although the elusive Christmas Island hawk owl keeps many coming back.

More than 100 vagrant and migratory bird species have been recorded here, including eight breeding seabird species and one subspecies. The most numerous is the wide-ranging red-footed booby, which nests in colonies in trees on many parts of the coastal shore terraces. you may see the endangered Christmas Island frigatebird soaring above Settlement - it's the world's rarest frigatebird and nests only on the island. The golden form of the white-tailed tropic bird is an endemic subspecies unique to Christmas Island. Known locally as the golden bosunbird, this stunning bird is graceful in flight and has been adopted as the island's fauna emblem.

Photo: Yvonne McKenzie and Christmas Island Tourism Association

Christmas Island National Park



For nature lovers, Christmas Island National Park provides fantastic opportunities to observe unique plants and animals in their natural habitats.

The park covers 85 square kilometres - about two thirds of the island.

As an isolated oceanic island, distant from other land masses, Christmas Island is home to a high proportion of endemic species - found nowhere else in the world. Several are endangered. The park protects significant ecosystems including much of the island's uniquely structured rainforests and two wetlands of international

importance, the Dales and Hosnie's Springs.

In and around the national park you will find a host of native sea and forest birds, unique marine life, and land crabs - including tens of millions of red crabs, famous throughout the world for their spectacular annual breeding migration.

Photo: Christmas Island Tourism Association

Address: Christmas Island

Public Transport: No

Opening hours: 24 hours

Phone: 08 9164 8700

Tickets: No

Internet: www.parksaustralia.gov.au/christmas

Email: christmasislandnp@environment.gov.au

More Info: Parks Australia, Christmas Island -

<http://www.parksaustralia.gov.au/christmas/>

SCUBA DIVING



Christmas Island Tourism Association

Christmas Island's narrow fringing reef supports bountiful marine life, including 88 coral species and more than 600 species of fish. It's an underwater wonderland for divers, with clear warm waters, coral reefs and spectacular wall dives. Soft corals, feather stars and gorgonian corals grow along vast walls which plunge into a seemingly bottomless abyss.

The fish community is distinctive because the island is a meeting place for Indian and Pacific Ocean fish species - it's one of the few locations

in the world where you'll see Indian and Pacific Ocean fish swimming side by side. Some of these species interbreed to produce hybrids.

Christmas Island has more hybrid fish than anywhere else in the world, making it a marine hybridisation zone of international significance.

In addition to the hundreds of species of tropical fish, dolphins inhabit the island's waters and whale sharks regularly visit during the wet season. Whale sharks generally first appear when the red crabs are spawning at the start of the wet season — they converge to supplement their plankton diet with crab larvae. Locations such as Flying Fish Cove, Ethel Beach, Dolly Beach, West White Beach, and Winifred Beach offer scuba divers and snorkellers a rewarding marine experience. At Flying Fish Cove and Ethel Beach shore diving is possible depending on the time of the year. There is excellent fishing, with sailfish, tuna and wahoo among some of the fish to be caught. You'll find boat ramps at Flying Fish Cove and Ethel Beach.

Perpendicular Wall



As the name of this dive site implies, here you'll find a wall that falls dramatically away to 118 feet (36 meters). Before you even descend, there's a chance you'll be surrounded by friendly dolphins. After you've said hi, descend to find an overhang full of sea fans. As the wall falls away, you'll notice masses of coral stretching out to catch the passing currents. Schools upon schools of fish travel every which way, leaving you to capture playful fusiliers and columns of butterflyfish on your underwater camera. Don't forget to look out into the blue! You might be

lucky enough to catch a glimpse of passing sharks and rays.

Dive Type: Wall

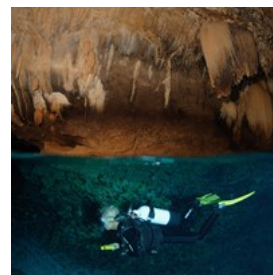
Recommended Level: Beginner, but Advanced to see the full scale of the site

Featured Creatures: Dolphins, Rays, Sharks, Butterflyfish and Fan Corals

Dive Site information provided by Sarah Morlock - www.diviac.com

Photo: Christmas Island Tourism Association

ThunderCliff Cave



The unique geography of Christmas Island lends itself to underwater caves and caverns. One of these, namely Thundercliff Cave, is considered by many to be the best dive on the island when conditions are right. Outside the entrance of the underwater cave, stands a beautiful coral garden with flocks of resident batfish. Following the tunnel into the overhead environment, you'll find a cathedral-like opening within. The subsequent room opens to the air above and connects to the remaining above-the-water passages, so leave your scuba gear and explore the interior of the cave.

Dive Type: Cave

Recommended Level: Beginner, but a Cave Diver certification would be handy

Featured Creatures: Batfish

Dive Site information provided by Sarah Morlock
- www.diviac.com

Photo: Christmas Island Tourism Association

The Morgue



A morbid name for a fantastic dive site, The Morgue is home to some of the largest corals around Christmas Island. The name itself stems

from a small building on shore that previously served as the island's morgue. Today, the underwater environment is filled with a field of bommies that leads down to the most scenic area of the site at 82 feet (25 meters). Searching every nook and crannie may result in some fantastic finds, such as blue ribbon eels, nudibranchs, feather stars and gilded triggers.

Dive Type: Reef

Recommended Level: Beginner, but Advanced to see the full scale of the site

Featured Creatures: Blue Ribbon Eels, Nudibranchs and Feather Stars

Dive Site information provided by Sarah Morlock
- www.diviac.com

Photo: Christmas Island Tourism Association (CITA)

Eidsvold Wreck

The Eidsvold was previously a Norwegian phosphate ship but was struck by a Japanese submarine during World War II. It was scuttled in Flying Fish Cove and later transported (dragged) to its ultimate resting place on the other side of Smith Point. Today, half of the Eidsvold sits between 16 and 60 feet (5 and 18

meters) while the other half has fallen over the edge, out of the reach of recreational divers. Because of the ship's age, she is now home to coral colonies and the squadrons of colorful tropical fish that Christmas Island is known for. The remains of the hull can be explored by wreck divers.

Dive Type: Wreck

Recommended Level: Beginner, but a Wreck Diver certification would be useful

Featured Creatures: Triggerfish, Lionfish and Eels

Dive Site information provided by Sarah Morlock
- www.diviac.com

Rhoda Wall



For pelagic lovers, Rhoda Wall is where the magic happens. From your dive boat, you may be able to look down to 100 feet (30 meters) below and see circling grey reef sharks. This coral-lined wall off the northwest coast of the island gently slopes down before falling into a vertical wall at 65 feet (20 meters). Fractal coral and hydrocorals host a variety of tropical reef fish, but keep your eyes on the blue. You might just get lucky and see a massive whale shark swim by!

Dive Type: Wall and Megafauna

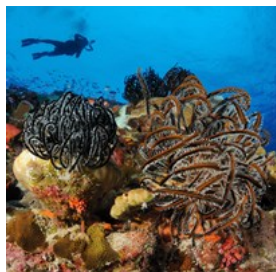
Recommended Level: Advanced

Featured Creatures: Reef Sharks, Whale Sharks and Rays

Dive Site information provided by Sarah Morlock
- www.diviac.com

Photo: Christmas Island Tourism Association (CITA)

Million Dollar Bommie



With a huge variety of fish life on a single, concentrated area, Million Dollar Bommie shouldn't be skipped on any dive holiday at

Christmas Island. The bommie is about 20 to 23 feet (6 to 7 meters) high, growing up from a base at 85 feet (26 meters). The huge fans and coral overhangs make for fantastic fish photography. You might spot Meyer's butterflyfish, pigfish, red fire goby, coral trout, damsel fish, fusiliers, triggerfish and rockcod. Keeping a watch out into the blue or while jumping in with snorkels after the dive, you might get a glimpse of a majestic manta ray.

Dive Type: Bommie/Reef

Recommended Level: Advanced

Featured Creatures: Manta Rays and Reef-Dwelling Fish

Dive Site information provided by Sarah Morlock
- www.diviac.com

Photo: Christmas Island Tourism Association

Flying Fish Cove



The best shore dive on Christmas Island, if not the best shore dive in Australia, Flying Fish Cove delivers with 90% of the fish species found

around the island. The dive starts from the boat ramp and works its way down to 60 feet (18 meters). Corals abound in every shape and size, dotted by the magnificent colors of ornate hawkfish, blackspotted pufferfish, surgeonfish and butterflyfish. If you want an easy dive which displays the diversity of Christmas Island, Flying Fish Cove is for you.

Dive Type: Shore

Recommended Level: Beginner

Featured Creatures: Reef-Dwelling Fish and a Variety of Corals

Dive Site information provided by Sarah Morlock
- www.diviac.com

Photo: Christmas Island Tourism Association (CITA)

West White Beach Cave



Another of the caves that honeycomb the limestone cliffs of Christmas Island, West White Beach Cave is perfect for beginners. The cavern opens up around

40 feet (12 meters) below the surface with two large entrances. Inside, a large room welcomes divers to explore the various coral formations growing on its walls, and lionfish rest under protected ledges. Look out to the open ocean for great photographs of your fellow divers

silhouetted against the sunlit background. After you're done exploring the cavern, take a look at the healthy reef system just outside between 40 and 60 feet (12 and 18 meters).

Dive Type: Cave

Recommended Level: Beginner

Featured Creatures: Lionfish and other Reef-Dwelling Fish

Dive Site information provided by Sarah Morlock
- www.diviac.com

Photo: Christmas Island Tourism Association

DINING



Christmas Island Tourism Association

Tastes of the Tropics - Christmas Island's Restaurants showcase its rich cultural mix. From spicy Asian fare to modern western cuisine often crafted to highlight fresh, local produce, you will find something delicious to suit your taste buds.

Restaurants, cafes and pubs offer a variety of styles, from traditional grills to colonial settings to laid back, casual pub options. Many offer the chance to relax over your meal while appreciating stunning outlooks.

Take advantage of the island's many picnic and barbecue venues, and pack your own hamper from fresh, tasty supplies available at local shops.

Rumah Tinggi Bar and Grill



Rumah Tinggi Bar and Grill Set in a 80 year old heritage listed building the Rumah Tinggi bar and Grill delivers hand crafted artisan foods and

drinks in its tapas, cocktail and al a carte menus. Reflecting local produce the Rumah is a true tropical island haven with endless views of the Indian ocean

Coconut Grove, Settlement

Lunch :

Wed - Mon : 11am - 2pm

Dinner : 6pm - 9pm

Email: info@rumah.cx

Phone : +61 8 9164 7667

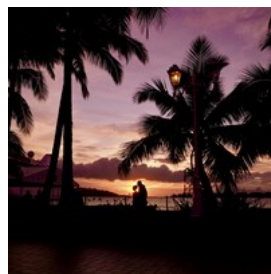
Photo: Sven Mieke/unsplash.com

Address: Christmas Island

Opening hours: Lunch : Wed - Mon 11am - 2pm Dinner : 6pm - 9pm

Phone: +61 8 9164 7667

Golden Bosun Tavern and Restaurant



Modern International fare with a dessert selection and coffee. Uninterrupted views of the Indian Ocean from the restaurant verandah.

Photo: Kazuo ota/unsplash.com

Address: Tampa View, Christmas Island

Opening hours: Dinner : Tue - Sun 5pm - 8.30pm (closed Monday)

Phone: +61 8 9164 7486

CAFES



Goami/Shutterstock.com

Christmas Island

Tastes of the Tropics - Christmas Island's Restaurants showcase its rich cultural mix. From spicy Asian fare to modern western cuisine often crafted to highlight fresh, local produce, you will find something delicious to suit your taste buds.

Restaurants, cafes and pubs offer a variety of styles, from traditional grills to colonial settings to laid back, casual pub options. Many offer the chance to relax over your meal while appreciating stunning outlooks.

Take advantage of the island's many picnic and barbecue venues, and pack your own hamper from fresh, tasty supplies available at local shops.

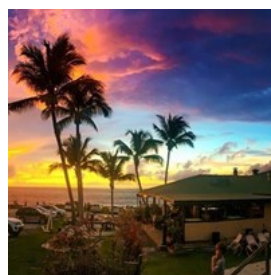
BARS & NIGHTLIFE



Christmas Island Tourism Association

Christmas Island not not known as a Nightlife Destination, however a few nice bars, mostly with views from the terraces are available to enjoy pleasantly sipping a cold brew at Sunset.

Golden Bosun Tavern



Christmas Island
Uninterrupted views of the Indian Ocean from the bar and restaurant.
Restaurant : Dinner Tue - Sun : 5.00pm - 8.30pm

(closed Monday)

Bar :

Mon - Sat : 4pm till 12am

Sunday : 2pm - 10pm

Phone : +61 8 9164 7486

Photo: www.christmas.net.au

Address: Tampa View, Christmas Island

Opening hours: Monday to Saturday 2pm till 12am, Sunday 2pm - 10pm

Phone: +61 8 9164 7486

SHOPPING



christmas.net.au / Christmas Island Tourism Association

Shopping on Christmas Island showcases the cultural mix that is the Island. You can pick up souvenirs, clothing, fishing gear, snorkelling equipment and general merchandise, usually at near duty free prices. Stores are located at the Kampong, Poon Saan, Drumsite, and at Temple Court and the Barracks on Gaze Road in Settlement.

Christmas Island Visitor Centre



Our friendly team can assist with the following •

Information service – maps, brochures etc •

Booking service for accommodation, car hire

and tours

- Business services – i.e. printing, scanning, laminating, facsimile sending and receiving
- Internet access with an internet café providing computers with common business applications
- The vicinity around the Visitor Centre is a 24 hour 7 day per week wireless hotspot – access vouchers can be purchased during business hours
- Golf club hire
- Gift shop – wide variety of gifts, souvenirs, clothing, jewellery and books.
- Lounge area available for watching a DVD or browsing magazine articles on Christmas Island

Photo: Christmas Island Tourism

Opening hours: Mon, Tue, Thur, Fri 8am - 4pm Sat 9am - 12 noon Sun 10am - 12 noon

Phone: +61891648382

Internet: www.christmas.net.au

Email: cita@christmas.net.au

ACCOMMODATION



Christmas Island Tourism Association

Christmas Island offers a range of accommodation including boutique hotel, self contained, and lodge style. The Christmas Island National Park is also home to a state of the art luxury eco lodge. On Christmas Island you can enjoy the personalised service that only comes with smaller operations and enjoy ocean views from many of these properties. Properties are located in Settlement and Kampong close to the ocean and also on the higher terraces. Each location and property offers something different.

Christmas Island Tourism can provide you with further information and can assist with accommodation booking. To find out more, check availability and book your accommodation please visit <https://www.christmas.net.au/plan-your-trip/all-accommodation.html>

The Sunset



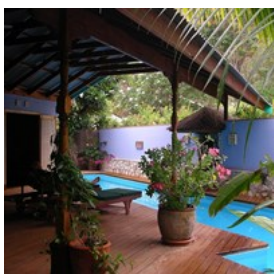
This superb accommodation boasts spacious, fully serviced air-conditioned rooms with king / queen size beds or twin share. Each room includes private ensuite. Centrally located at Settlement, it's only a short stroll to shops, cafes and the Golden Bosun Tavern.

Facilities

Cot Available
Disabled Access
Non Smoking Establishment
Barbeque
Internet Access Available
Non Smoking Indoors
Television
No Pets Allowed
Air Conditioned
Basic Laundry Facilities
Swimming Pool
book-online

Photo: Christmas Island Tourism Association
Internet: www.christmas.net.au/the-sunset

The Sanctuary



Stunning tropical home set among lush gardens in the Settlement heritage precinct with its own private lap pool. Accommodates up to 4 people, two bedrooms each with a queen size bed.

Facilities

DVD Player
Non Smoking Establishment
Barbeque
Internet Access Available
Laundry Facilities
Non Smoking Indoors
Television
Full Cooking Facilities
No Pets Allowed
Air Conditioned
Swimming Pool

Photo: Christmas Island Tourism Association
Internet: www.christmas.net.au/the-sanctuary

TOURIST INFORMATION



Christmas Island Tourism Association

Christmas Island is an Australian Territory, and has been since 1958. It lies in the tropical waters of the Indian Ocean, 2,600 kms northwest of Perth, and 500kms south of Jakarta

It was named by Captain William Mynors when sighted on Christmas Day in 1643.

It was annexed by Britain in 1988 after phosphate deposits were found.

An imported workforce, including Chinese, Malays and Sikhs laid the foundations for today's thriving and culturally rich community.

Japanese troops invaded Christmas Island during World War 2.

Post World War 2, the island was administered as part of the Straits Settlement of Singapore, before the UK transferred sovereignty to Australia.

Airport



Christmas Island Airport
Code : XCH Scheduled
Virgin Australia flights
operate from Perth
International Airport to
Christmas Island several

times per week.

A charter services operates to Christmas Island from Jakarta every Saturday. Visit www.christmas.net.au for the latest flight information.

Photo: Juan Garces

Public Transport



There is no public transport available on Christmas Island. Getting around: Hiring a vehicle (4WD recommended) is easy and the best way to

see the Islands. Scooters can also be hired. Guided tours are available and can be arranged through the Visitor Information Centres on each island.

Photo: Pierre-Luc Auclair

Taxi



Island Taxis operate 6 days per week and can be contact on +61 439 215 644 Airport Transfers available upon request.

Photo: Christmas Island Tourism Association (CITA)

Opening hours: Tuesday to Sunday

Phone: +61 439 215 644

Post



Australia Post operates a post office on Christmas Island. Mail arrives and departs the Islands once per week.

Photo: Andy Fuchs

Pharmacy



The Indian Ocean Territories Health Service offers a wide range of medical, nursing and ancillary health service. Qualified medical,

nursing and ancillary health workers provide these services. The health facilities are modern and well equipped, and include accidents and emergency department, consulting rooms, laboratory, dental clinic, operating theatre, 8 inpatient beds, x-ray and ultrasound facilities. Patients requiring specialist care are assisted in their travel to Perth, and emergency cases are evacuated to Perth through the RFDS. It is important that visitors to the Island have appropriate travel insurance to cover emergency evacuation from Christmas Island. Obstetric patients are referred to Perth for delivery in

Perth during the last four weeks of pregnancy. These patients and their spouses are assisted their travel to Perth.

Health services include:

- Outpatient GP Service
- Inpatient cares
- Emergency 24 hour cares
- Visits by medical specialists and ancillary health workers
- Women s' health
- Child health and immunization
- Health promotion activities

Routine medical services are provided free to Australian citizens & permanent residents. Private billing applies to workers' compensation, insurance examinations, etc. Dental services are available at the hospital for a scheduled fee. The dentist also operates a school dental health clinic. A voluntary St Johns Ambulance service also operates on the island.

Photo: Gemma Garner
Opening hours: 24 hours

Telephone



There is full STD access by phone or fax to and from the Australian mainland. A Telstra 2G GSM Mobile Telephone Service (no data services)

operates on the Island and a Telstra dealership is available for new, postpaid or prepaid products. Limited Telstra facilities and services are available to island residents.

Photo: Jardson Almeida

Electricity



Christmas Island uses the Australian standard electrical socket, which has two flat pins forming an inverted V-shape plus a vertical earthing pin.

Photo: Christmas Island Tourism Association (CITA)

Population

Christmas Island is home to a vibrant and warm community with a cultural mix that colours island life with many traditions, celebrations and festivals. The 1500 islanders that make up the vibrant community include people of Chinese, Malay and European heritage with a blend of Buddhist, Christian, Taoist and Muslim cultures celebrated openly.

From it's early days of phosphate discovery in 1881, when settlers and workers arriving brought their cultural and religious traditions, the island community grew to become a fascinating melting pot of cultures.

Today, visitors are welcomed and encouraged to join in, learn more and experience the thriving, contemporary Christmas Island "feel" in the many amazing foods, festivals and places.

Currency

Christmas Island operates with Australian Dollars and is duty free. Credit cards are widely accepted, and most businesses have EFTPOS facilities. There are no ATM's on Christmas Island and international visitors are encouraged to bring cash.

Opening hours

08:00-16:00

Internet

www.christmas.net.au

Emergency numbers

Police, Fire, Ambulance 000 (Triple Zero)

Tourist information

Christmas Island lies in the tropical waters of the Indian Ocean, 2600 north-west of Perth in Western Australia, and 300 kms south of Java, Indonesia. It's warm year round with an average daily temperature of 27 degrees Celsius. Pack lightly, with a rain jacket for the wet season (December - April).

Christmas Island is most famous for it's unique red crab migration, and is also one of the world's truly magnificent seabird breeding sites. Two thirds of Christmas Island is National Park. Majestic rainforests, bountiful marine life and stunning land and seascapes make it a nature lover's paradise. You'll find a range of inspirational nature based activities here from birdwatching, scuba diving, snorkelling and fishing to forest and coastal walks.