



# Taipei

Photo: Vernon Raineil Cenzon/unsplash



f11photo/shutterstock

The city and the countryside, the old and the new, high culture and the downright gritty – whatever you are looking for, Taipei has everything today's discerning traveller could wish for. Set in a natural basin amongst lush green mountains, the city is just a stone's throw away from unspoiled beaches and wild coastline, and boasts all the distractions a modern metropolis can offer while at the same time providing a glimpse into its ancient past.

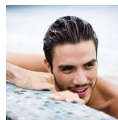


Twinstersphoto/shutterstock



FenlioQ/shutterstock

## Featured



### Beitou Hot Springs

The Beitou area of Taipei is renowned for its high concentration of thermal ...



### Maokong Gondola

Take a cable car ride in a glass bottom gondola all the way up to the top of...



### Sanxia Old Street

Sanxia Old Street is one of the most well reserved historic streets in Taiwa...



### TaipeiEYE

Experience traditional Chinese and Taiwanese performing arts at Taipei Eye. ...



### Taipei 101

Taipei 101 was ranked officially as the world's tallest building from 2004 u...

## Top 5



### Chiang Kai-shek Memorial Hall

The Taipei landmark, Chiang Kai-Shek National Memorial Hall, was constructed...



### Ximending District

Perhaps the hippest neighbourhood in Taipei, Ximending (or Shi-men Ting) is



### Yehliu Geopark

Shaped by water and wind, the rocks of Yehliu Geopark attract many to the ar...



### Lungshan Temple

Originally built in 1738, this is the oldest and most popular worship temple...



### National Palace Museum

The National Palace Museum holds the world's largest collection of Chinese a...

## THE CITY



Richie Chan/shutterstock

If you're looking for a taste of old Taipei, then head for the Wanhua district. Located on the Tamsui River, Wan Hua was an important Chinese trading post and the prosperity of the period is reflected in its ornate temples, one of which is the Lungshan temple. Another historic part of the city is the Da Tong (Tatung) district. Among the winding alleys you will find European style colonial buildings standing beside intricate Chinese temples.

Take a stroll down Di Hua Street, which is lined with traditional shops selling all manner of potions and cure-alls! The Shi Lin (Shihlin) district is renowned for its bustling night market, whilst Taipei's vibrant night scene bumps and grinds until the early hours in nearby Da An (Ta An). In the bustle of modern Taipei, Zhong Shan (Chungshan) the former commercial centre is now known for its shops, bars and cultural sights, which include the Taipei Fine Arts Museum. The current hub of commercial activities, Song Shan (Sungshan) is also one of the most cosmopolitan districts and packed with foreign restaurants. Zhong Zheng (Chungcheng), the political centre, is home to municipal parks and museums, of which the Chiang Kai-Shek Memorial Hall is the most renowned.

## DO & SEE



2p2play/shutterstock

Taipei has so much to offer, lots to see and experience. There is everything from ancient temples to night markets to keep both first-time and return visitors occupied. There are also plenty of museums to visit, like the National Palace Museum, and abundant green parks to stroll around.

### Chiang Kai-shek Memorial Hall



The Taipei landmark, Chiang Kai-Shek National Memorial Hall, was constructed in memory of Chiang Kai-Shek, former president of R.O.C. The

large area is dominated by the colours of the national flag: blue, white and red. These colours symbolise independence, universal love and equality.

Photo: FenlioQ/Shutterstock.com

Address: 21 Zhongshan South Road, Zhongzheng District, Taipei

Public Transport: Exit 5, CKS Memorial Hall MRT Station. Or Exit 3, Dongmen MRT Station.

Opening hours: Daily 9am-6pm

Phone: +886 2 2343 1100

Internet: [www.cksmh.gov.tw](http://www.cksmh.gov.tw)

### Ximending District



Perhaps the hippest neighbourhood in Taipei, Ximending (or Shi-men Ting) is a pedestrian-only area that truly comes to life after sundown. Loud music plays and bright shopfront lights flicker, enticing local youths and tourists with their offerings, some beyond wacky: maid cafes, knife massage, curious bubble tea concoctions, KTV booths, and more - all this along with a few very well preserved historic buildings, such as the Red House. It's a great place to experience the dynamic, young side of Taipei.

Photo: Artit Wongpradu/Shutterstock.com  
Address: Ximending, Taipei

### Yehliu Geopark



Shaped by water and wind, the rocks of Yehliu Geopark attract many to the area. The park and its natural attractions showcase art that has been formed by natural forces over centuries. The place looks almost otherworldly: it's easy to imagine you're walking on the surface of a different planet.

Photo: CHC3537/Shutterstock.com  
Address: Kantung Road, Taiwan

### Lungshan Temple



Originally built in 1738, this is the oldest and most popular worship temple in Taipei. It has bronze dragons on pillars symbolising protection, and Buddha sculptures in the main hall. A visit to

this magnificent temple will grant you an understanding of Chinese architecture and religion.

Photo: By yunchen/Shutterstock.com  
Address: 211 Guangzhou Street, Wanhua District, Taipei  
Public Transport: Lungshan Temple MRT Station  
Opening hours: Daily 6am-10pm  
Phone: +886 02 2302 5162  
Internet: [www.lungshan.org.tw](http://www.lungshan.org.tw)

### National Palace Museum



The National Palace Museum holds the world's largest collection of Chinese art including antiquities, paintings, calligraphy, and rare documents spanning 5,000 years. The museum is known as the treasure house of Chinese culture.

The museum offers multilingual guided tours.

Photo: vichie81/Shutterstock.com  
Address: 221, Section 2, Zhishan Road, Shilin District, Taipei  
Public Transport: Shilin MRT Station and then the Red 30 bus  
Opening hours: Sun-Thu 8:30am-6:30pm, Fri & Sat 8:30am-9pm  
Phone: +886 2 6610 3600  
Internet: [www.npm.gov.tw](http://www.npm.gov.tw)  
Email: [service@npm.gov.tw](mailto:service@npm.gov.tw)

### Taipei 101



Taipei 101 was ranked officially as the world's tallest building from 2004 until the opening of the Burj Khalifa in Dubai in 2010. The building stands at a height of 508m/1,667 ft. This Taipei landmark was designed in eight sections, since the Chinese lucky number is just that. The

building has 101 floors with some of the fastest elevators in the world, travelling at a speed of almost 61 kilometres per hour.

The first 5 floors are occupied by upscale stores and boutiques.

Photo: KabirK/Shutterstock.com

Address: Xinyi Road, Taipei

Public Transport: Exit 4, Taipei 101 MRT Station.

Opening hours: Daily 9am-10pm

Phone: +886 2 8101 8800

Internet: [www.taipei-101.com.tw/en](http://www.taipei-101.com.tw/en)

More Info: No.7, Sec. 5

### Tamsui Riverside Cycle Path



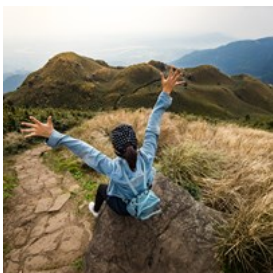
Part of the Golden River Bank (Tamsui Jinse Shui'an Biking Trails), this is a well-maintained path running from Tamsui MRT to the

Hongshulin MRT. Beautiful scenery and access to one of the region's few remaining mangrove swamps. Before you rent a bike and begin your journey at Tamsui MRT, try the iron eggs, fish balls, and Tamsui Agei (stuffed deep-fried tofu pockets) at the snacks stalls.

Photo: imtmphoto/shutterstock

Address: 1 Zhongzheng Road Tamsui, New Taipei, Taipei

### The Yangmingshan National Park



The Yangmingshan National Park provides the backdrop while you hike away the strain of a hard day's city sightseeing. The park is

located just to the north of Taipei and is Taipei's closest national park. This is a very beautiful site and a must see.

Photo: T.Dallas/Shutterstock.com

Address: 1-20 Zhuzihu Road, Beitou District, Yangmingshan, Taipei

Phone: +886 2 2861 3601

Internet: [www.ymsnp.gov.tw](http://www.ymsnp.gov.tw)

Email: [ymsnp@mail.ymsnp.gov.tw](mailto:ymsnp@mail.ymsnp.gov.tw)

### Taipei Zoo



Taipei Zoo is a very nice place for families with children, there are lots of things to see and a wide variety of animals to admire. The zoo is very

big with plenty of room for the animals, and you can easily wander around the whole day. Taipei Zoo is, in fact, one of Asia's largest zoos.

Photo: catmanc/Shutterstock.com

Address: 30 Xinguang Road, Wenshan District, Taipei

Public Transport: Taipei Zoo MRT Station

Opening hours: Daily 9am-5pm

Phone: +886 2 2938 2300

Internet: [english.zoo.gov.taipei](http://english.zoo.gov.taipei)

More Info: Sec. 2

### TaipeiEYE



Experience traditional Chinese and Taiwanese performing arts at Taipei Eye. Perform every Monday, Wednesday, Friday, and Saturday for

around 90 minutes. The rotating performances include local folklore, aboriginal dance, puppet theatre and traditional opera. On-screen subtitles in Chinese, Japanese, Korean, and English are provided.

Photo: Spaceport9/shutterstock

Address: 113, Section 2, Zhongshan North Road, Zhongshan District, Taipei

Phone: +886 2 2568 2677

Internet: [www.taipeiye.com/](http://www.taipeiye.com/)

Email: [taieye@taipeiye.com](mailto:taieye@taipeiye.com)

### National Revolutionary Martyrs' Shrine



National Revolutionary Martyrs' Shrine honours the men and women who died fighting on behalf of Taiwan in the Second Sino-Japanese War and the Chinese Civil War (among others). This is a popular tourist attraction with beautiful gardens including several structures and a shrine. Do not miss the changing of the guards which happens once every hour.

Photo: Richie Chan/Shutterstock.com

Address: 139 Bei'an Road, Zhongshan District, Taipei

Opening hours: Daily 9am-5pm

Phone: +886 2 2885 4376

Internet: [afrc.mnd.gov.tw/faith\\_martyr](http://afrc.mnd.gov.tw/faith_martyr)

### Sanxia Old Street



Sanxia Old Street is one of the most well reserved historic streets in Taiwan, one that's about 200 metres long. This is a great place to stroll around, and one where you can admire the old street-houses with Taiwanese traditional architecture. It is also one of the most visited places in Taipei during the weekends.

Photo: Kevin Wang/unsplash

Address: 37-147 Minquan Street, Sanxia District, Taipei

Public Transport: Yongning MRT Station, then take Bus 916 to Sanhsia Old Street

Internet: [www.sanchiaoyung.com.tw](http://www.sanchiaoyung.com.tw)

### Fine Arts Museum



If you love art, then this is the right place for you. The Taipei Fine Arts Museum has something for any art enthusiast. It opened its doors in December 1983 and was the first museum of modern art in Taiwan. Today, it has more than 4,000 works of art.

Photo: Faye Yu/unsplash

Address: 181 Zhongshan North Road, Section 3, Zhongshan District, Taipei

Public Transport: Exit 1, Yuanshan MRT Station

Opening hours: Tue-Fri & Sun 9:30am-5:30pm, Sat

9:30am-8:30pm, Mon closed

Phone: +886 2 2595 7656

Internet: [www.tfam.museum](http://www.tfam.museum)

Email: [info@tfam.gov.tw](mailto:info@tfam.gov.tw)

### Maokong Gondola



Take a cable car ride in a glass bottom gondola all the way up to the top of the mountain from Taipei Zoo Station to Maokong Station, where you can enjoy stunning views of the city. At the top you will find food stands, tea shops and some paths for hiking. The ride takes about 20 minutes.

Photo: qragon/shutterstock

Address: 8, Section 2, Xinguang Road, Wenshan District, Taipei

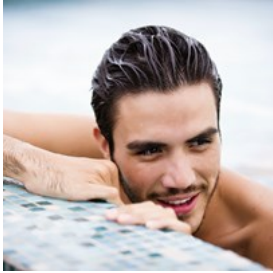
Public Transport: Taipei Zoo MRT Station

Phone: +886 2 218 12345

Internet: [english.gondola.taipei](http://english.gondola.taipei)

Email: [email@metro.taipei](mailto:email@metro.taipei)

### Beitou Hot Springs



The Beitou area of Taipei is renowned for its high concentration of thermal spa centres. There are establishments to fit any budget, from the

low-priced open-air Public Hot Spring (modest swimwear required) to private hotels and resorts uphill, all offering hot spring baths at various price points. One option most resorts offer is renting a private room with a large bath that can be filled with hot spring water.

The Spring City Resort in Beitou is a great mid-range option. A session here includes access to about a dozen thermal pools of varying water temperature (from seemingly boiling-hot to rather chilly), plus robe, towel, and slipper rental. They even offer a free shuttle bus to the metro station.

For a luxurious spa treatment, look into the offerings of Hotel Regent Taipei, for example. Wellspring Spa offers a wide range of relaxing treatments including massages, body wraps, skin polishing and facials. Take the elevator to the top floor and unwind at this urban sanctuary.

Photo: Luna Vandoorne/Shutterstock.com  
Address: Beitou, Taipei

### Xingtian Temple



Xingtian Temple, also called Hsing Tian Kong, is a large Taiwanese temple where locals pray and conduct religious rituals.

This temple might not be as popular as Longshan, but it is a very peaceful and beautiful place nonetheless.

Photo: Nattee Chalermtiragool/Shutterstock.com  
Address: 109 Er Section, Minquan East Road, Taipei  
Public Transport: Xingtian Temple MRT Station  
Phone: +886 2 2502 7924  
Internet: [www.ht.org.tw/htk\\_eng/index.html](http://www.ht.org.tw/htk_eng/index.html)

### Daan Forest Park



Daan Park is a quiet escape from the big city life of Taipei, and a great place to catch a breath of fresh air. The park has a wide range of flowers, plants, bamboo trees and banyan trees. It is also full of activities such as a skating rink, basketball court and children's playground.

Photo: Kit Leong/Shutterstock.com  
Address: 1, Section 2, Xincheng South Road, Da'an District, Taipei  
Public Transport: Daan Park MRT Station  
Phone: +886 02 2700 3830

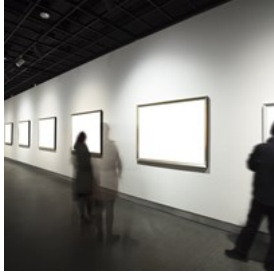
### Cycling Tours



With a tour company like Taipei Bike Works you can explore the city in a fun, fast and efficient way — on a bicycle! Taiwan offers a very friendly cycling environment with many incredible things to discover.

Photo: Ariyaphol Jiwalak/shutterstock  
Phone: +886 982 277 996  
Internet: [taipeibikeworks.com/en/tours](http://taipeibikeworks.com/en/tours)

## Museum Of Contemporary Arts



Museum Of Contemporary Arts is the first art institution in Taiwan dedicated exclusively to contemporary art. The building that houses the museum was built in the 1920s as an elementary school, and later became Taipei's city hall. It was not until 2001 that it was converted into an art museum. Over the past years the museum has hosted more than a hundred exhibitions of local and overseas artists.

Photo: zhu difeng/Shutterstock.com

Address: 39, Chang'an W. Road, Datong District, Taipei

Public Transport: Exit R4, Zhongshan MRT Station

Opening hours: Tue-Sun 10am-6pm, Mon closed

Phone: +886 2 2552 3721

Internet: [www.mocatapei.org.tw](http://www.mocatapei.org.tw)

Email: [services@mocatapei.org.tw](mailto:services@mocatapei.org.tw)

## DINING



54613/shutterstock

The regional cuisine is a mix of Chinese, Japanese and aboriginal Hakka styles. It is also influenced by its island geography and the scarcity of arable land. Fish and poultry, therefore, play a major role in local cooking. However, the base of all dishes is made up of seasoning varieties particular to Asian cooking, such as soy sauce, rice wine, and sesame oil,

supplemented with black beans, peanuts, chilli peppers, and a local variety of basil.

## Din Tai Fung



Din Tai Fung is a restaurant chain originating in Taiwan, which now has multiple branches across Asia and beyond (the fact it remains largely unknown in the West is a tragic shortcoming).

They are famous for their steamed dumplings (xiao long bao), which are some of the world's best: each move of the dumpling chefs is executed with careful precision in the open kitchen. It was once named among the top ten restaurants in the world by The New York Times, and many of its branches were distinguished by the Michelin Guide, as well as heralded by celebrity chefs such as the late Anthony Bourdain. The service is truly impeccable, and the price-quality ratio needs to be experienced to be believed.

Photo: HYS\_NP/Shutterstock.com

Address: Taipei 101, B1, 45, City Hall Road, Xinyi District, Taipei

Public Transport: Exit 4, Taipei 101/World Trade Centre MRT Station

Opening hours: Daily 11:30am-7:30pm

Phone: +886 2 8101 7799

Internet: [www.dintai fung.com.tw/eng](http://www.dintai fung.com.tw/eng)

More Info: At Taipei 101 Mall

### Modern Toilet Restaurant



This wacky little place deserves a mention simply for its celebrity status on social media: the concept lends itself exceptionally well to

Instagram posts. Here, diners are seated on actual toilet bowls, and all food is served in bathroom-themed tableware (poop emoji ice-cream in a 'urinal', anyone?), with drinks that come in hand soap containers.

Photo: Dylan Ferreira/unsplash

Address: Lane 50, 7-2 Xining South Road, Wanhua District, Taipei

Phone: +886 2 2311 8822

### Tainan Tan Tsu Mien Seafood Restaurant



Although quintessentially Taiwanese, this seafood restaurant has somewhat of a European ambience, with an interior design vaguely reminiscent of

palatial rooms in Vienna or Versailles. Their cuisine adheres to a high standard, and the menu is quite varied, with a special focus on seafood.

Photo: Top Photo Corporation/shutterstock

Address: 31-1 Huaxi Street, Taipei

Public Transport: Longshan Temple MRT Station

Opening hours: Daily 11:30am-2:30pm / 5:30pm-9:30pm

Phone: +886 2 2308 1123

Internet: [www.seafoodtaipei.com.tw](http://www.seafoodtaipei.com.tw)

More Info: The restaurant is also known as 7.7.7.M. Seafood

### Ji Pin Restaurant



Ji Pin is a renowned seafood restaurant. Specialities include shark fin, abalone, and mushroom and scallop dumplings. The

restaurant has a modern New York-style decor.

Photo: 54613/Shutterstock.com

Address: 236, XinYi Road, Section 4, Da'an District, Taipei

Public Transport: Xinyi Anhe MRT Station

Opening hours: Daily 11:30am-2:30pm / 5:30pm-10pm

Phone: +886 2 2700 3311

Internet: [www.jipinboutique.com](http://www.jipinboutique.com)

More Info: 2nd floor

### ShinYeh Original Restaurant



Shin Yeh serves authentic regional cuisine. The fish dishes are excellent, particularly the sweet and sour shrimp. The friendly and cheerful staff

make you feel welcome and at home.

Photo: momo2050/Shutterstock.com

Address: 34-1 Shuangcheng Street, Zhongshan District, Taipei

Public Transport: Exit 1, Zhongshan Elementary School MRT Station

Opening hours: Daily 11am-midnight

Phone: +886 2 2596 3255

Internet: [www.shinyeh.com.tw/content/en/info](http://www.shinyeh.com.tw/content/en/info)

### Ruth's Chris Steak House



If you are craving a steak, this restaurant might be something for you. On the menu you will find prime steaks which are served sizzling on a hot plate.

Choose a great wine from the award-winning wine list and enjoy a great evening.

Photo: Frank Chang/Shutterstock.com

Address: 135, Minsheng East Road, Section 3, Songshan District, Taipei

Opening hours: Daily 11:30am-3pm / 5:30pm-11pm

Phone: +886 2 2545 8888

Internet: ruthschris.com

### Addiction Aquatic Development



Another popular restaurant is Addiction Aquatic Development. Tourists and locals come here for the fresh Japanese food and for the

inexpensive menu. This is a great place for hot pot, sushi, sashimi and all things seafood.

Photo: vichie81/Shutterstock.com

Address: 18, Alley 2, Lane 410, Minsheng East Road, Zhongshan District, Taipei

Opening hours: Daily 6am-midnight

Phone: +886 2 2508 1268

Internet: [www.addiction.com.tw](http://www.addiction.com.tw)

More Info: Cash only

### La Caja de Musica



La Caja de Musica is a hidden gem in Taipei, and one somewhat hard to find, but definitely worth the search. The friendly staff serve

mouthwatering tapas and other dishes of Spanish cuisine. It also offers a good selection of Spanish wines and German beers.

Photo: Tatiana Bralnina/shutterstock

Address: 17, Alley 5, Lane 133, Nanjing East Road, Section 4, Songshan District, Taipei

Opening hours: Tue-Sat 5pm-10pm, Sun & Mon closed

Phone: +886 975 330 741

Internet: [www.instagram.com/lacajademusicataipei](http://www.instagram.com/lacajademusicataipei)

Email: [taipei.cjm@gmail.com](mailto:taipei.cjm@gmail.com)

### L'Atelier de Joël Robuchon



Joël Robuchon is a world-renowned 3 Michelin star chef with established restaurants all over the world. One is located in Taipei, offering

guests traditional French cuisine of high quality. The ambiance of the restaurant is elegant and modern, and the attentive staff offers professional service.

Photo: Kzenon/shutterstock

Address: Bellavita, Floor 6, 28 Songren Road, Xinyi District, Taipei

Opening hours: Daily 11:30am-2:30pm / 6pm-9:30pm

Phone: +886 2 8729 2628

Internet:

[jrobuchon.com/our\\_locations/latelier-de-joel-robuchon-taipei](http://jrobuchon.com/our_locations/latelier-de-joel-robuchon-taipei)

### Yen Chinese Restaurant



At this elegant and sophisticated restaurant you can enjoy dishes of the Chinese cuisine such as dim sum and other classics, all

well-presented with a creative touch.

Photo: Kumpol Chuansakul/Shutterstock.com

Address: W Taipei, Floor 31, 10 Zhongxiao East Road, Section 5, Xinyi District, Taipei

Opening hours: Daily 11:30am-2:30pm / 6pm-10pm

Phone: +886 2 7703 8887

Internet:

[www.marriott.com/en-us/hotels/tpewh-w-taipei/dining](http://www.marriott.com/en-us/hotels/tpewh-w-taipei/dining)

More Info: Located on 31/F of W Hotels

### Saffron Fine Indian Cuisine



Enjoy the flavours of India at Saffron. This is a very small and busy restaurant, so good advice would be to book in advance. The restaurant is beautifully designed with earth tones and the staff are attentive and friendly.

Photo: Linda Hughes/Shutterstock.com

Address: 38-6 Tianmu East Road, Shilin District, Taipei

Opening hours: Mon 5:30pm-9:30pm; Tue-Thu & Sun 11am-3pm / 5:30pm-9:30pm; Fri & Sat 11am-2pm / 5pm-10pm

Phone: +886 2 2871 4842

Email: saffrontw@gmail.com

### Minder Vegetarian



This Buddhist vegetarian restaurant chain has multiple locations around Taipei, and it is a buffet-style restaurant with cold and warm dishes — all vegetarian. Minder is an inexpensive restaurant and offers salads, mock meat, fried sweet potatoes, lots of tasty vegetables, noodles, tofu, beans, spring rolls and desserts. You can also order food from the menu.

Photo: Jade Y/shutterstock

Address: QSquare, 1 Chengde Road, Section 1, Datong District, Taipei

Opening hours: Sun-Thu 11am-9:30pm, Fri & Sat 11am-10pm

Phone: +886 2 2559 5008

Internet: [www.minder.com.tw](http://www.minder.com.tw)

## CAFES



Mongkol Foto/shutterstock

After a long day of city sightseeing or shopping, there is nothing better than to relax with a cup of coffee at a cafe. Taipei has a great cafe culture, and you will find plenty of coffee shops around the city. Many of them offer fresh coffee, tea, and if you happen to be craving something sweet they have an assortment of tasty desserts, too.

### Coffee Alley



Coffee Alley is a chain of cafes that can be found at several locations across Taipei. They specialise in Western fare, such as waffles and sandwiches. The menu contains pictures of each dish as well as an explanation in English.

Photo: grafvision/Shutterstock.com

Address: 18 Guanqian Road, Floor 2, Zhongzheng District, Taipei

Opening hours: Daily noon-10pm

Internet: [www.coffeealley.com.tw](http://www.coffeealley.com.tw)

Email: [service@coffee-alley.com.tw](mailto:service@coffee-alley.com.tw)

### Florida Bakery



This cafe has been around for more than 70 years and has kept its well-respected status throughout them all. Take your pick from its wide and tasty selection of both Western and typical Taiwanese baked goods and pastries, and make sure you try its signature garlic French bread.

Photo: Africa Studio/Shutterstock.com  
Address: 23-5, Zhongshan North Road, Section 3, Zhongshan District, Taipei  
Opening hours: Daily 6:30am-11pm  
Phone: +886 2 2594 6923  
Internet: [www.bread.com.tw](http://www.bread.com.tw)  
Email: [info@bread.com.tw](mailto:info@bread.com.tw)

### Smith & Hsu



This is a modern coffee shop with a million different teas to choose from. If you order by the pot, you can choose from green tea, white tea, fruit tea, oolong tea, black tea — the list goes on. Apart from coffee and tea, they offer delicious scones, freshly baked and still warm, served with cream and farm jam.

Photo: Magdanatka/shutterstock  
Address: 36 Nanjing East Road, Section 1, Zhongshan District, Taipei  
Opening hours: Daily 10am-10pm  
Phone: +886 2 2562 5565  
Internet: [www.smithandhsu.com](http://www.smithandhsu.com)

### Fuhang Soy Milk



This could be the ticket if you're searching for an authentic experience. There are no menus in any foreign language, and it's one of the locals' favourite spots for a fast traditional breakfast.

Photo: yuruphoto/Shutterstock.com  
Address: 108-2 Zhongxiao East Road, Section 1, Zhongzheng District, Taipei  
Opening hours: Daily 5:30am-12:30pm  
Phone: +886 2 2392 2175

### BARS & NIGHTLIFE



CHEN MIN CHUN/shutterstock

As the sun sets on another day of trading, the city turns its attention to the serious business of fun. Under the shimmer of the neon-lit sky, the city's bars come alive to the sound of laughter and the shouts of 'Gan Bei' (dry the cup!). If you still have the energy after the day's exertions and are looking to shake it off, then head off to one of Taipei's nightclubs. The pace is frantic and the atmosphere charged as crowds groove until the early hours.

### Ounce



Ounce is everyone's favourite Taipei speakeasy, whose secret is now well and truly out. Patrons enjoy the privacy and sense of exclusivity forged by the hidden location and dim lighting.

Photo: View Apart/shutterstock

Address: 309 Xinyi Road, Section 4, Da'an District, Taipei

Opening hours: Daily 6pm-2am

Phone: +886 2 2703 7761

Internet: [www.instagram.com/ouncetaipei](http://www.instagram.com/ouncetaipei)

### Ximending District



Perhaps the hippest neighbourhood in Taipei, Ximending (or Shi-men Ting) is a pedestrian-only area that truly comes to life after sundown. Loud music plays and bright shopfront lights flicker, enticing local youths and tourists with their offerings, some beyond wacky: maid cafes, knife massage, curious bubble tea concoctions, KTV booths, and more - all this along with a few very well preserved historic buildings, such as the Red House. It's a great place to experience the dynamic, young side of Taipei.

Photo: Artit Wongpradu/Shutterstock.com

Address: Ximending, Taipei

### Woobar



For a night out in style, try the swanky W Hotel and its bar serving refined cocktails by the on-site poolside. Casual by day, the bar gains an increasingly more stylish feel as the night progresses and neon lights come on throughout.

Photo: cdrin/Shutterstock.com

Address: W Taipei, 10 Zhongxiao East Road, Section 5, Xinyi District, Taipei

Phone: +886 2 7703 8887

Internet:

[www.marriott.com/en-us/hotels/tpewh-w-taipei/overview](http://www.marriott.com/en-us/hotels/tpewh-w-taipei/overview)

More Info: 10F, W Hotel

### Frank Taipei



The swanky Frank Taipei knows how to throw a solid party, and offers unbounded partying of the most varying calibre - from casual evening drinks to all-out celebrations (it's a good deal for special occasions and the year's hottest party, New Year's eve). Has an outdoor area with views over towering Taipei 101.

Photo: Pressmaster/Shutterstock.com

Address: ATT 4 FUN Xinyi Store, 110 Songshou Road, Xinyi District, Taipei

Phone: +886 909 332 333

Internet: [www.instagram.com/frank\\_taipeicity](http://www.instagram.com/frank_taipeicity)

### Shaka Lounge Bar



The establishment's interior is planned out according to the principles of feng shui, which promises to bring good luck to those who enter. This venue is popular for after-work drinks and gatherings. Happy Hour is from 7-9:30pm Sunday through Thursday.

Photo: Jacob Lund/Shutterstock.com

Address: 2, Lane 23, Anhe Road, Section 2, Da'an District, Taipei

Opening hours: Sun-Thu 6pm-2am, Fri & Sat 6pm-3am

Phone: +886 2 2705 3337

Internet: [www.instagram.com/shakalounge](http://www.instagram.com/shakalounge)

### Partyworld



Karaoke bar with booths for groups of friends to croon the night away. This is definitely worth a trip to get infected by the apparent joy and the ardour with which the visitors engage in the fine art of karaoke.

Photo: Mediaphotos/Shutterstock.com

Address: 199 Songjiang Road, Zhongshan District, Taipei

Phone: +886 2 2503 1688

Internet: [www.cashboxparty.com](http://www.cashboxparty.com)

More Info: SungJiang Branch

## SHOPPING



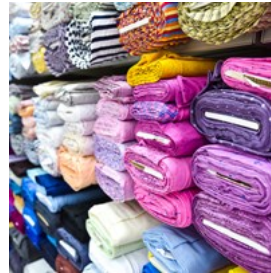
Patchanee Samutarlai/shutterstock

Taipei is a shopping extravaganza that caters to every budget. For those who are looking for an authentic Taipei shopping experience and like a bargain, the night markets are the places to head for. At Shilin (Jiantan MRT) you can find everything from clothes to traditional regional foods.

Stop for a bite to eat at one of the roadside food vendors, whose specialities include oyster omelettes. Looking for souvenirs? Explore a plethora of night markets, with artisanal goods competing for attention with stylish clothes and street food.

If it's a more upmarket shopping experience you're looking for then head towards the Taipei 101 Shopping centre and the Bellavita Shopping Mall. These stock the usual brand name goods.

### Yongle Fabric Market



The building's second floor is completely given over to this well-known fabric market, a collection of all manner of colourful textiles on sale at dozens of shops set back-to-back. In the third floor, your newly purchased fabrics can be transformed into complete garments at one of the many tailor shops.

Photo: JGA/Shutterstock.com

Address: 21 Dihua Street, Section 1, Datong District, Taipei

Opening hours: Mon-Sat 10am-6pm

### Herb Alley

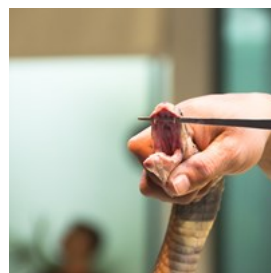


The tiny alley of no longer than a few dozen metres contains the wealth of knowledge on traditional medicinal herbs and potions passed down through generations of healers. Shop around and do not miss the medicinal drinks in Xichang St.

Photo: Dragon Images/Shutterstock.com

Address: Lane 224, Xichang Street, Wanhua District, Taipei

### Snake Alley



Huaxi Street, or Snake Alley as it is better known, is located in the Wanhua district and is more a bizarre tourist attraction than a real market. Ophidiophobics beware! Here you will

find everything: snake-performances, snake blood drinks and all manner of snake dishes.

Photo: BB2/shutterstock

Address: Huaxi Street Night Market, Huaxi Street, Wanhua District, Taipei  
Phone: +886 2 2388 1818

### Lin Hua Tai Tea Company



The city's oldest tea shop still sells a wide variety of teas, all available for sampling upon request. Prices are indicated per 600 grams. Those who

wish to take a tour of the factory may feel free to approach the staff and be shown around.

Photo: voyata/Shutterstock.com

Address: 193 Chongqing North Road, Section 2, Datong District, Taipei  
Phone: +886 2 2557 3506  
Internet: linhuatai.okgo.tw

### Ximending District



Perhaps the hippest neighbourhood in Taipei, Ximending (or Shi-men Ting) is a pedestrian-only area that truly comes to life after sundown. Loud music plays and bright shopfront lights flicker, enticing local youths and tourists with their offerings, some beyond wacky: maid cafes, knife massage, curious bubble tea concoctions, KTV booths, and more - all this along with a few very well preserved historic buildings, such as the Red House. It's a great place to experience the dynamic, young side to Taipei.

Photo: Artit Wongpradu/Shutterstock.com  
Address: Ximending, Taipei

### Taipei 101



Taipei 101 was ranked officially as the world's tallest building from 2004 until the opening of the Burj Khalifa in Dubai in 2010. The building stands at a height of 508m/1,667 ft. This Taipei landmark was designed in eight sections, since the Chinese lucky number is just that. The building has 101 floors with some of the fastest elevators in the world, travelling at a speed of almost 61 kilometres per hour.

The first 5 floors are occupied by upscale stores and boutiques.

Photo: KabirK/Shutterstock.com

Address: Xinyi Road, Taipei  
Public Transport: Exit 4, Taipei 101 MRT Station.  
Opening hours: Daily 09.00-22.00  
Phone: +886 2 8101 8800  
Internet: [www.taipei-101.com.tw/en/index.aspx](http://www.taipei-101.com.tw/en/index.aspx)  
More Info: No.7, Sec. 5

### Tonghua Night Market



Also known as Linjiang Street Night Market, Tonghua Night Market is a not-so-touristy market buzzing with commercial life, packed with street

food vendors selling all manner of exotic delights, from dumplings to sushi. Clothing, jewellery, souvenirs and knick knacks are also sold in abundance.

Photo: Baiterek Media/shutterstock

Address: Linjiang Street, Da'an District, Taipei  
Opening hours: Mon-Sat 6pm-2am, Sun 6pm-midnight  
More Info: Another very popular market selling a similar assortment of goods and snacks is Raohe in the Songshan district.

## TOURIST INFORMATION



*littlekop/shutterstock*

### Passport/Visa



Nationals of many countries are eligible for a visa exemption program, provided they fulfil a number of requirements: passport validity for at least 6 months following the date of entry, along with a confirmed return ticket or confirmed ticket to the following destination.

The list of countries whose nationals are eligible for the visa exemption program is continuously updated, and varying periods of stay are allowed to different nationalities (consult the Taiwan Consular Affairs website for current information). Nationals of other countries will need to apply for a visa; individual requirements vary by nationality.

Photo: mana5280/unsplash

Internet: [www.boca.gov.tw/lp-149-2.html](http://www.boca.gov.tw/lp-149-2.html)

### Best Time to Visit



To avoid the hot and humid temperatures of the summer, it's best a trip to Taipei (and Taiwan as a whole) is planned for either October and November in autumn, or March and April in spring. It can get crowded around Chinese New Year (February), as many come for the festivities.

Photo: Lisanto 李奕良/unsplash

### Taiwan Taoyuan International Airport (TPE)



Taiwan Taoyuan International Airport is situated 40 kilometres southwest of Taipei. To travel between the airport and Taipei, you can choose from several bus services or opt for the more efficient high-speed train, which reaches Taipei Main Station in just 39 minutes. Shuttle buses frequently run between the airport and the high-speed train station for easy transfers.

At the airport, taxis are available at the north side of the Terminal 1 Arrivals Lobby and the south side of the Terminal 2 Arrivals Lobby. Taxi fares are metered.

Photo: Ian Lu/unsplash

Address: Taiwan Taoyuan International Airport, Taoyuan

Phone: +886 3 398 3274

Internet: [www.taoyuan-airport.com](http://www.taoyuan-airport.com)

## Public Transport



The subway (MRT) is easy and fast to use around the city. You can buy your ticket from the machines located in every MRT station. Coins and bills are accepted. MRT day passes (TaipeiPass) without limits on journeys, distance and can be used on all routes. You can also get the transportation card EasyCard at any stations and convenience stores.

MRT trains run from 6am to midnight.

The bus network in Taipei is efficient, with buses running frequently. There are several bus lines operating around the city and most of them have English signs. At the bus stop make sure to flag the bus down when you see it. EasyCard is accepted by all buses.

Photo: Lisanto 李奕良/unsplash  
Internet: english.metro.taipei

## Taxi



Taipei is home to more than 18,000 taxis, readily available at any time, day or night. Fares are metered and government-regulated.

For longer trips beyond city limits, a predetermined flat rate is typically negotiated with the driver prior to departure.

Toll Free Taxi Hotline  
55850 by mobile phone  
+800 055850 by pay phone

Taiwan Taxi Company

www.taiwantaxi.com.tw  
55688 by mobile phone  
+886 2 4058 8888 by pay phone

Taipei Taxi Tour Service  
www.taipei-taxi.com  
+886 935 998 959

Welcome Pickups  
www.welcomepickups.com/taipei/taxi

Photo: Chinh Le Duc/unsplash

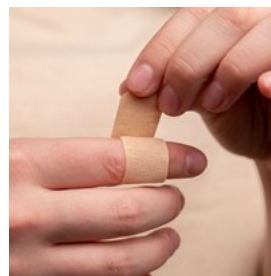
## Post



Taipei's central post office is located south of the train station. There is another post office in the station itself. Red post boxes are for international mail, while the green ones are for local postings.

Photo: Simona Sergi/unsplash  
Address: Taipei Dongmen Post Office(Taipei Branch 1), 163, Sec. 2, Xinyi Road, Zhongzheng District, Taipei

## Pharmacy



There are many pharmacies throughout Taipei. Cosmed is a popular pharmacy chain. You can also pick some medication at POYA or Watsons.

For all off-hours emergencies contact National Taiwan University Hospital (NTUH).

Photo: Diana Polekhina/unsplash  
Address: National Taiwan University Hospital, 7, Zhongshan South Road, Zhongzheng District, Taipei  
Phone: +886 2 2312 3456

Internet: [www.ntuh.gov.tw/ntuh](http://www.ntuh.gov.tw/ntuh)

## Telephone



Country code: + 886 Area  
code: (0)2

Photo: Wesley Hilario/unsplash

## Electricity



Taiwan has the same electrical standard as North America and many countries in Asia. The power plugs and sockets are of type A (with two flat prongs) and B (with two flat prongs and a round grounding rod). Expect 110V at 60Hz.

Photo: Kelly Sikkema/unsplash

## Population

2.5 million

## Currency

New Taiwan dollar (NT\$ or TWD)

## Opening hours

Office hours for most government agencies are from 8:30am to 5:30pm weekdays. Banking hours are from 9am to 15:30pm from Monday to Friday. Private companies are usually more flexible with their working hours. Most stores stay open until late both on weekdays and weekends and there are plenty of 24-hour convenience stores throughout the city.

## Internet

[www.travel.taipei/en](http://www.travel.taipei/en)

## Newspapers

Taipei Times: [www.taipeitimes.com](http://www.taipeitimes.com)

## Emergency numbers

Police: 110

Ambulance: 119

## Tourist information

The Department of Information and Tourism, Taipei City Government and tourist friendly stores have 19 information stations across the city.

Taipei Main Station Tourist Service Center is open daily 9am–7pm.





A 2	H7
Aiguo East Road	D4
Aiguo West Road	B4
Baoqing Road	B3 C3
Beiping East Road	D2
Beiping West Road	D2
Boai Road	B4 C2 C3
Changan West Road (6th Boulevard)	B1 C1 D1
Changji Street	E7
Changsha Road	B3
Chengde Road Section 1 (5th Avenue)	C2 D1
Chengde Road Section 3 (5th Avenue)	E6 E7 E8
Chengdu Road	A3 B3
Chifong Road	D1
Chinchou Street	F8 G8 H8
Chinghsi Street	E8
Chiuchuan Street	E6
Chongqing North Road Section 1 (4th Avenue)	C1 C2
Chongqing South Road Section 1 (4th Avenue)	C2 C3
Chongqing South Road Section 2 (4th Avenue)	C4
Chungxiao Bridge	A1
Civic Boulevard (5th Boulevard)	B1 D2
Dali Road	A4
Dalong Street	E5 E6 E7 E8
Danyang Road	D3
Derhui Street	F7 G7
Dihua Road Section 1	B1
Duenhuang Road	E5
Ermei Road	A2 B2
Fushun Street	E7
Fuxing North Road (11th Avenue)	H7 H8
Gangu Road	B1 C1
Gongyuan Road	C3 C4
Guangjian Road	C2
Guangzhou Street	A3 A4 B4
Guider Road	B1
Guilin Road	A3 B3
Guishi Street	E8
Guiyang Road Section 1	B3 C3
Guiyang Road Section 2	A3 B1 B2 C3 D3
Hami Street	E6

Hankou Road	C2	L 18	B2 D3	L 71	B2
Hankou Road Section 1	B2	L 187	A3	L 74	A3 C4
Hengyang Road	B3 C3	L 188	A3	L 75	B4
Heping West Road Section 2 (1st Boulevard)	A4 B4	L 193	G7	L 76	B2
Herchiang Street	H8	L 20	C2 D1	L 79	C1
Huaining Road	C2 C3	L 201	A3	L 8	C4
Huanhe North Road Section 1 (1st Avenue)	B1	L 22	A4 C2 C4 D4	L 81	A4 B4
Huanhe South Road Section 1 (1st Avenue)	A2 A3	L 23	D3	L 82	A3
Hukou Road	C4	L 230	B4	L 83	C1 D1
Jianguo North Road Section 3 (10th Avenue)	G7 G8	L 239	B1	L 85	B3
Jilin North Road	G6 G7 G8	L 24	D2 D4	L 86	G7
Jinhua Road	D4	L 24	E7	L 88	A4
Jinnan Road Section 1	D3	L 25	A2 A4 B4	L 9	B2
Jiuquan Road	E6 F6	L 252	G7	L 90	A2
Juguang Road	A4	L 258	A3	L 91	B3
Kaifeng Road Section 1	B2 C2	L 26	C1 D1 D3	L 92	G8
Kangding Road	A3 A4	L 28	A2 B2	L 95	B3
Keidagelan Road (3rd Boulevard)	C3	L 29	A3 B3 C1	L 96	A2
Kunming Street	A2 A3 B2	L 296	A3	L 96	E8
L 102	E8	L 30	A2 A4	L 97	C1
L 105	F7	L 32	B1	Lanzhou Street	E7
L 107	C1	L 33	D1 D2	Laoning Street	H7 H8
L 114	A3	L 330	G8	Linsen North Road (7th Avenue)	F7 F8
L 115	C1	L 34	B4	Linsen South Road (7th Avenue)	D3
L 115	G8	L 344	C1	Liuzhou Road	A3
L 116	D4	L 36	D3	Longchang Road	A3
L 117	C1	L 38	B1 B2	Lungchiang Road	H7 H8
L 12	C4 D1	L 384	H7	Luoyang Road	B2
L 126	D1	L 4	B3	Mengjia Road	A4
L 132	A4	L 40	D1 D2 D4	Mingshui Road	H5
L 133	C1	L 408	B1	Minquan East Road (9th Boulevard)	F8 G8 H8
L 133	E7	L 41	D1	Minquan West Road (9th Boulevard)	E7
L 135	G7	L 42	D1	Minsheng East Road (8th Boulevard)	G8 H8
L 137	F8	L 429	H7	Minsheng West Road (8th Boulevard)	E8 F8
L 14	B1	L 44	D1	Minzu East Road (10th Boulevard)	G7
L 140	D1	L 46	A2 A3 C1 C2	Minzu West Road (10th Boulevard)	E7 F7
L 142	C4	L 48	A4	Nanchang Road Section 1	C4
L 147	A3 B3	L 485	F8	Nanghai Street	C4
L 149	A3	L 51	A4 C1	Nanjing West Road (7th Boulevard)	B1 C1 D1
L 152	A3	L 53	D2	Nanning Road	A4 B3
L 152	G8	L 54	C4	Nanyang Road	C2
L 155	C1	L 55	A4	Neijiang Street	A3
L 16	C1 C2 D1	L 56	B2 D2	Ningbo West Street	C4 D4
L 160	B3 C3	L 57	A4	Nungan Street	F7 G7
L 163	A4	L 6	C4	Peian Road	F5 G5 H5
L 167	C1	L 64	D1	Pinchiang Road	G6 H6
L 167	G7	L 69	A3 C1	Pingyang Road	C1 D1
L 170	G7	L 70	E8	Qingdao East Road	D2
L 172	A3	L 71	G7	Renai Road Section 1 (3rd Boulevard)	D3

Roosevelt Road Section 1	C4 D4	Taoyuan Road	B3	Yanping North Road Section 1	C1
Shuangcheng Street	F7	Tianshui Road	C1	Yanping South Road (3rd Avenue)	B2 B3 B4 C2
Shuanglian Street	E8	Tibet (Sizang) Road	B4	Yongchang Road	B1 C1
Siangyang Road	C2	Tienjin Road	D1 D2	Yongfu Road	A3 B3
Sichang Street	A3	Tingzhou Street Section 1	A4 B4	Yuanting Road	C3
Singcheng Road	E8	Tungho East Road Section	E5 F5	Zhenjiang Road	D2
Singning Road	A4	Wanda Road	A4	Zhonghua Road Section 1 (2nd Avenue)	B2 B3
Sining North Road	B1	Wuchang Road Section 1	B2 C2	Zhonghua Road Section 2	A4
Sining South Road	B2 B3	Wuchang Road Section 2	A2	Zhongshan North Road Section 1 (6th Avenue)	D1 D2
Sinyi Road Section 1 (2nd Boulevard)	D3 D4	Wuchang Street	H7	Zhongshan North Road Section 1 (6th Avenue)	F6 F7 F8
Songjiang North Road (9th Avenue)	G7 G8	Xinsheng North Road (8th Avenue)	F6 F7 F8	Zhongshan South Road(6th Avenue)	D2 D3
Sun Yat-sen Freeway (Chungshan Freeway)	E5 F5 G6 H6	Xuchang Road	C2	Zhongsiao West Road Section 1 (4th Boulevard)	C2 D2
Tacheng Street	B1	Xuzhou Road	D3	Zhongsiao West Road Section 2 4th Boulevard	B2
Taiyuan Road	C1	Yajiang Road	A3	Zhongyuan	F7 F8