



Shenzhen

Photo: Robert Bye/Unsplash

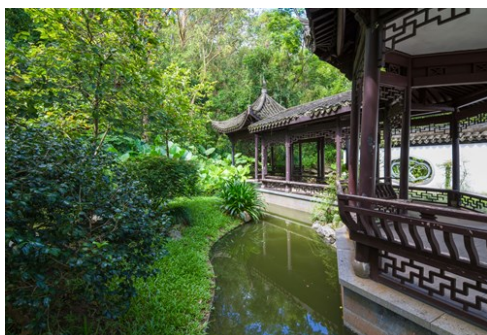


gui jun peng/Shutterstock.com

In just 30 years, Shenzhen has gone from a quiet fishing village to one of China's most exciting, fast-paced cities. The city's booming economy and abundant opportunities attract people from across China, making it a dynamic tech hub and a melting pot of cultures. While Shenzhen may lack a deep historical heritage, it stands out as one of China's most modern cities, with cutting-edge infrastructure and a vibrant, youthful energy.

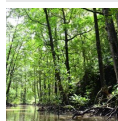


kf zhou/Pexels



HelloRF Zcool/Shutterstock.com

Featured



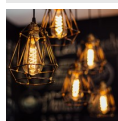
Mangrove Nature Reserve
Nestled along Shenzhen's coastline, the Mangrove Nature Reserve is a peaceful...



Splendid China Folk Village
This sprawling 30-hectare theme park lets you journey through China's most i...



Lizhi Park
Just a stone's throw from the centre of Shenzhen, Lizhi Park offers a peacef...



Design Society
Located near Shuiwantou Bay, Design Society is China's first cultural and de...



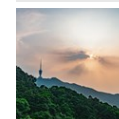
Shenzhen Museum
Explore a vast collection of calligraphy pieces and gain insight into Shenzh...

Top 5

Overseas Chinese Town
Overseas Chinese Town (OCT) is a dynamic cultural and entertainment hub in Shenzhen, home to several of the city's most popula...



Window Of The World
At the theme park Window of the World, visitors get to stroll through a mini...



Wutong Mountain
For a taste of nature just outside the city, hiking up Wutong Mountain is a ...



OCT Harbour
OCT Harbour is a bustling destination that combines leisure, dining, and ent...

Dapeng Fortress
Around 90 minutes from the hustle and bustle of Shenzhen, Dapeng Fortress stands as a time capsule from the Ming Dynasty.

THE CITY



ken19991210/pixabay

Shenzhen's story is one of the most remarkable transformations in modern China. Just over 40 years ago, this bustling metropolis was nothing more than a humble fishing village with a small population. Everything changed in 1980 when the Chinese government designated it as the country's first Special Economic Zone (SEZ). This bold experiment was part of Deng Xiaoping's reforms to open China to the world, drawing foreign investment and setting the stage for rapid development. Almost overnight, Shenzhen became a magnet for entrepreneurs, builders, and investors from across China and beyond, sparking an economic boom that few could have imagined.

Today, Shenzhen feels like the beating heart of China's tech scene—it's often called 'China's Silicon Valley'. Here, sleek skyscrapers, sprawling tech campuses, and start-ups abound. Walking through the city, you might pass the headquarters of giants like Huawei, Tencent, and DJI, which have made Shenzhen their home base. And yet, for all its modernity, Shenzhen has preserved pockets of its past, with temples, traditional markets, and quiet, older neighbourhoods tucked between the glass and steel towers. This mix of old and new makes Shenzhen a unique place that feels both forward-thinking and deeply rooted, an exciting

stop for travellers curious about China's dynamic evolution.

DO & SEE



Xiuxia Huang/Shutterstock.com

Shenzhen may not have the centuries-old temples and traditional landmarks of other Chinese cities, but it has quickly established itself as a forward-looking destination with a blend of creativity, entertainment, and innovation. Known for its original theme parks, immersive cultural sites, and shopping districts—especially for electronics—Shenzhen offers plenty to explore.

The sprawling city is also surprisingly accessible; its efficient metro system makes navigating between attractions like the high-tech Huaqiangbei electronics market, Window of the World, and various scenic spots both easy and convenient.

Overseas Chinese Town

Overseas Chinese Town (OCT) is a dynamic cultural and entertainment hub in Shenzhen, home to several of the city's most popular attractions. Among the highlights are four major theme parks: Splendid China, Window of the World, Chinese Folk Culture Village, and Happy Valley. You can enjoy thrilling rides, including China's longest log flume, take in panoramic views from an all-glass observation deck, or

explore beautifully landscaped artificial gardens and replicas of European landmarks.

Address: OCT Tourist Park, Yantian District, Shenzhen
Phone: +86 755 8888 9888

Window Of The World

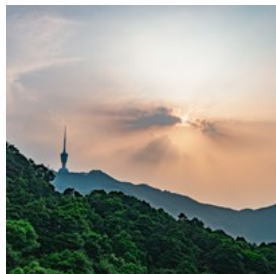


At the theme park Window of the World, visitors get to stroll through a mini-version of the globe. In just an afternoon, you can

wander among over 130 replicas of iconic landmarks from five continents: snap a selfie beneath the towering Eiffel Tower, step back in time at the pyramids of Giza, and wind along the paths of Cambodia's Angkor Wat. The park doesn't just recreate famous sites—it also brings them to life with events year-round. Summer's Beer Festival and Winter's Dance Festival fill the grounds with live music, dancing, and international flavors.

Photo: Dashu Xinganling / Shutterstock.com
Address: 9037 Shennan Avenue, Nanshan District, Shenzhen
Opening hours: Mon-Fri 9am-10pm
Phone: +86 755 2660 8000

Wutong Mountain



For a taste of nature just outside the city, hiking up Wutong Mountain is a favourite among locals and visitors alike. The mountain offers a range

of trails, so whether you're an experienced hiker or just looking for a scenic stroll, there's something for every fitness level. The effort is well worth it when you're rewarded with sweeping views of Shenzhen—and on clear days, you can even catch a glimpse of Hong Kong in

the distance.

While the hike is the main attraction, make sure to explore the Hongfa Temple, one of the largest and most revered in Shenzhen, as well as the botanical garden nestled in the mountain's foothills, where you can relax and immerse yourself in lush greenery.

Photo: HelloRF Zcool / Shutterstock.com
Address: Wutong Village, Luohu District, Shenzhen

OCT Harbour



OCT Harbour is a bustling destination that combines leisure, dining, and entertainment in one vibrant spot. With a mix of modern exhibitions, art galleries, shopping malls, an aquarium, and even an open-air theatre, there's something for everyone. The complex also features an IMAX cinema, a variety of restaurants, and an artificial beach. Plus, the view of Shenzhen's skyline is simply breathtaking.

Photo: liuyuanmei362/Pixabay
Address: 8 Baishi Dong Lu, Nanshan District, Shenzhen
Phone: +86 755 8612 2311

Dapeng Fortress

Around 90 minutes from the hustle and bustle of Shenzhen, Dapeng Fortress stands as a time capsule from the Ming Dynasty. This 600-year-old walled military village was built to protect the region from pirates, and much of its original structure remains intact. Walking through the fortress, you'll encounter ancient fortifications, narrow alleys, and sturdy watchtowers.

In 2007, Dapeng Fortress was recognised as part

of UNESCO's Intangible Cultural Heritage for its cultural significance. Today, it's a place where you can step back into history, explore the centuries-old architecture, and imagine life as it was when pirates roamed the waters just off the coast.

Address: Dapeng Village, Dapeng New District, Shenzhen
Opening hours: Daily 9am-6pm
Phone: +86 755 2810 8856

Lizhi Park



Just a stone's throw from the centre of Shenzhen, Lizhi Park offers a peaceful retreat with its lush green lawns, tranquil lakes, and plenty of shady spots to unwind. It's the perfect place for a leisurely afternoon, whether you're boating on the lake, enjoying a quiet walk, or simply soaking up the calm atmosphere.

But what really sets Lizhi Park apart is its lively weekend scene. Every Saturday and Sunday, the park becomes a vibrant hub for locals gathering to share their passions. You'll find the English corner, where learners practice their language skills, alongside groups of Tai Chi practitioners and traditional opera enthusiasts. Whether you're joining in or just observing, it's a great way to get a taste of local culture.

Photo: Xiuxia Huang/Shutterstock
Address: 1001 Hongling Middle Road, Futian District, Shenzhen
Phone: +86 755 8209 5655

Splendid China Folk Village



This sprawling 30-hectare theme park lets you journey through China's most iconic landmarks in miniature. Xi'an's ancient Terracotta Army, the serene Leshan Buddha, and a winding model of the Great Wall are just a few of the sights you'll find here.

It's an ideal spot to get inspired to travel beyond the usual highlights like the Forbidden City and Temple of Heaven. But Splendid China Folk Village doesn't just stop at landmarks; it brings China's cultural diversity to life with full-scale villages that celebrate the unique customs of China's 55 ethnic minority groups. You can catch traditional performances, taste regional snacks, and experience hands-on workshops, from craft-making to dance.

Photo: 灰灰王/Pexels
Address: 9003 Shennan Da Dao, Shenzhen
Opening hours: Mon-Fri 10am-9:30pm, Sat & Sun 10am-10pm
Phone: +86 755 2660 9199

Mangrove Nature Reserve



Nestled along Shenzhen's coastline, the Mangrove Nature Reserve is a peaceful retreat and a crucial stop for migratory birds travelling the East Asia-Australasia Flyway. The park's serene surroundings make it a perfect spot for nature lovers, especially birdwatchers hoping to catch glimpses of over 200 species of migratory birds, including rare sightings like the black-faced spoonbill.

But this place isn't just for wildlife enthusiasts—locals love to visit on weekends for a different kind of escape. With its scenic sea views, the park is often filled with families and groups playing cards, enjoying picnics, or simply unwinding by the water.

Photo: CCPAPA/Pixabay.com

Address: Haibin Da Dao, Fu Tian District, Shenzhen

Di Wang Building



Once Shenzhen's tallest skyscraper, Di Wang Building is more than just an architectural feat—it's a symbol of the city's rapid growth. Take a 50-second ride to the 68th-floor observation deck, where you'll be treated to panoramic views: Shenzhen's ever-expanding skyline on one side and a glimpse of Hong Kong on the other.

Once holding the world record for construction speed (an impressive 2.5 days per floor), this building is a testament to the city's ambition. Although newer skyscrapers now tower over it, Di Wang remains a must-visit for those wanting a bird's-eye view of Shenzhen's dynamic urban landscape, especially when the sun sets and the skyline lights up.

Photo: canadastock/Shutterstock.com

Address: 5002 Shennan Dong Lu, Luohu District, Shenzhen

Opening hours: Daily 8:30am-11:30pm (last entry by 10pm)

Phone: +86 755 8246 1671

Internet: www.szmvc.com.cn

Chung Ying Street

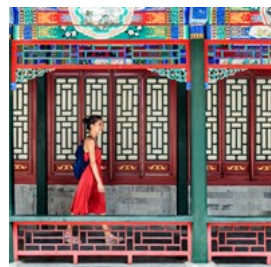


Stretching 250 metres long and 4 metres wide, Chung Ying Street is one of the most fascinating places to cross from Hong Kong into Shenzhen's Shekou town. One side of the street belongs to Hong Kong, while the other is in Mainland China—standing in the middle feels like a unique step between two worlds. The Chung Ying Street Historical Museum offers a deep dive into the history behind this border crossing.

For those looking to shop, the street is a popular tax-free zone. However, it's important to be cautious as counterfeit goods are known to circulate here. A special permit is required to access the street.

Photo: BlueOrange Studio/Shutterstock

Shenzhen Museum



Explore a vast collection of calligraphy pieces and gain insight into Shenzhen's history through a variety of themed exhibition halls.

Highlights include 'Beginning of the City,' 'Marine Economy,' 'An Important Strategic Town on Coastal Defense,' and 'Ancient Immigration,' each offering a unique glimpse into the city's cultural and economic heritage.

Photo: Maridav/Shutterstock.com

Address: 6 Tongxin Road, Futian District, Shenzhen

Opening hours: Tue-Sun 10am-6pm, Mon closed

Phone: +86 755 8210 5369

Dameisha Beach



Dameisha Beach is a popular coastal escape in Shenzhen, offering warm waters nearly all year round. It's a fantastic spot for those looking to

relax by the sea, as well as for active visitors who enjoy outdoor water sports. The beach boasts stunning panoramic views of the surrounding mountains and, on clear days, a distant glimpse of Hong Kong. In the summer, the beach comes alive with activities like swimming, parasailing, and horse riding.

Photo: HelloRF Zcool/Shutterstock.com

Address: Yanmei Road, Yantian District, Shenzhen

Design Society



Located near Shuiwantou Bay, Design Society is China's first cultural and design centre, a cutting-edge space dedicated to promoting

creativity and design. In collaboration with London's Victoria & Albert Museum, this art centre showcases a diverse range of contemporary design exhibitions and fosters the rapidly growing design scene in Southern China. Beyond the exhibits, the building itself is a work of art, with a lush roof garden offering a peaceful escape.

Photo: NinoSayompoo/Shutterstock.com

Address: 1187 Wanghai Road, Shekou, Nanshan, Shenzhen

Opening hours: Daily 10am-10pm

Phone: +86 755 2667 1187

He Xiangning Art Museum



He Xiangning Art Museum is named after one of China's most celebrated female painters, He Xiangning, known for her

contributions to modern Chinese art. Established by the central government, the museum serves as a cultural beacon, celebrating Chinese artistic traditions while also showcasing contemporary art. The museum regularly hosts exhibitions featuring the works of both local and international artists, making it an important stop for those interested in modern art and China's evolving creative landscape.

Photo: Mark Agnor/Shutterstock.com

Address: 9013 Shennan Da Dao, Nanshan District, Shenzhen

Phone: +86 755 2660 4540

Email: hxn@hxnart.com

DINING



zhgee/Shutterstock.com

As a cultural melting pot, Shenzhen has attracted millions of people from across China and beyond, each bringing their unique culinary traditions with them. This mix has made Shenzhen one of the most diverse food cities in the country. Whether you're craving the hearty, generous flavours of Northeast Chinese cuisine, the bold and fiery spices of Sichuan, or the delicate, refined dim sum of Cantonese cuisine,

there's something to satisfy every palate here.

Din Tai Fung



Din Tai Fung is a renowned Taiwanese restaurant chain celebrated globally for its delicate, masterfully crafted xiao long bao (steamed soup dumplings). With locations across Asia and beyond, it's a must-visit for dumpling lovers and a place that has earned accolades from culinary experts worldwide. The New York Times once ranked it among the world's top ten restaurants, and its Hong Kong branches have been recognised by the Michelin Guide, underscoring its exceptional reputation. At the Shenzhen location, diners can experience not only the legendary xiao long bao but also a variety of other Taiwanese and Chinese dishes, each made with the same meticulous attention to detail. If you only have time for one meal in Shenzhen, this restaurant could be the highlight.

Photo: Ronnie Chua / Shutterstock.com

Address: 1881 Baoan Nan Lu, Luohu District, Shenzhen

Opening hours: Daily 10:30am-10pm

Phone: +86 755 2598 2779

No.1, Guanhai Road



No.1 Guanhai Road, a Neo-Chinese cuisine gem perched atop a mountain, offers breathtaking sea views alongside an innovative menu. Known for its contemporary twist on traditional Chinese flavours, the restaurant features must-try dishes like crispy roast duck and spicy mantis shrimp that pair perfectly with the scenic surroundings.

Photo: bonchan / Shutterstock.com

Address: 1 Guanhai Road, Nanshan, Shenzhen

Opening hours: Daily 8am-10pm

Phone: +86 755 2683 7999

1881



Located on the ground floor of the Grand Hyatt Hotel, 1881 offers a stylish yet laid-back setting ideal for gatherings with family and friends. The restaurant showcases Northern Chinese and Sichuan dishes, with specialities like the signature Wood-Fired Beijing Duck and spicy shrimp prepared 'Kong Bao style'. For wine lovers, the menu includes a broad selection of Chinese wines to accompany the meal. Reservations are recommended, especially for those looking to try the celebrated Beijing Duck.

Photo: vsl/Shutterstock

Address: 1881 Baoan Nan Lu, Luohu District, Shenzhen

Opening hours: Daily 11:30am-2pm / 5:30pm-10pm

Phone: +86 755 8266 1234

Internet: www.hyatt.com/en-US/hotel/china/grand-hyatt-shenzhen/shegh/dining

Phoenix House



In Cantonese culture, Zao Cha (morning tea) is more than just a meal—it's a ritual that combines a pot of fragrant tea with a leisurely feast of dim sum, enjoyed over hours. Phoenix House, located within Shenzhen's Pavilion Hotel, is one of the city's top spots for this traditional experience. Known for its authentic, high-quality offerings, the restaurant serves a variety of classic dim sum, including delicate steamed crystal shrimp dumplings and flavourful BBQ pork buns.

Photo: MOM0TaR0 / Shutterstock.com

Address: 2012 Hongli Road, Futian District, Shenzhen

Opening hours: Daily 11am-10pm

Phone: +86 755 8207 6688

Shigonghui Seafood Restaurant



Shigonghui Seafood Restaurant is where the true flavours of the sea come alive. A local favourite, it's known for its impressive selection of

live seafood, ranging from crabs and prawns to more adventurous choices like sea cucumbers. If you're in the mood for a proper Cantonese feast, this is the place to be. Don't miss the sea urchin with fried rice or the steamed sea urchin with eggs, which are among the most popular dishes here.

Photo: Napat Photography / Shutterstock.com

Address: 38 Baihua 5th Road, Futian District, Shenzhen

Opening hours: Daily 10am-10pm

Phone: +86 755 8207 6062

Dong Men Pedestrian Street



Noisy, scent-laden, and colourful, Dong Men Pedestrian Street hosts a vibrant food market that introduces you to some of the best street snacks in

Shenzhen. From fresh seafood and skewered meats to baozi and Taiwanese pancakes, there's something to satisfy every craving of a curious traveller.

The street comes alive at night, with food carts lining the streets and a mix of mouthwatering aromas filling the air. While dishes like chicken feet might push some visitors out of their comfort zones, it's a fun and adventurous place

to eat like a local.

Don't forget to bring cash, as it's the most common way to pay at many of these street-side vendors.

Photo: Elena Ermakova/Shutterstock

Address: Dongmen Road, Luohu District, Shenzhen

Haidilao Hot Pot



Haidilao Hot Pot has made a name for itself as one of Shenzhen's favourite hotpot spots, and it's easy to see why.

The restaurant is famous for its wide selection of fresh ingredients—from tender cuts of beef and fish to juicy crab and plenty of veggies. But what really sets Haidilao apart is the experience. It's not just about the food; it's about the fun. The staff keeps things lively with cheerful Chinese dances that entertain diners, adding an unexpected twist to your meal.

Photo: norikko/shutterstock

Address: 3 Fuhua Road, Futian District, Shenzhen

Opening hours: Daily 9:30am-11pm

Phone: +86 755 8238 0492

Internet: www.haidilao.com

CAFÉS



Rawpixel.com/Shutterstock.com

Though tea has long been the beverage of choice in China, Shenzhen's rapidly evolving café scene is making waves. The city's cosmopolitan vibe, driven by an influx of international residents and visitors, has given rise to a dynamic coffee culture. At the same time, tea remains an integral part of daily life, with many cafés offering premium Chinese teas alongside their coffee offerings.

BARS & NIGHTLIFE



santypan/Shutterstock

Shenzhen's nightlife scene is increasingly drawing a crowd from Hong Kong, especially on weekends, as revellers seek the city's more vibrant, local party atmosphere. Clubs here cater to a wide range of musical tastes, and one of the hotspots is Sea World Square in Shekou District, known for its blend of expat-friendly bars and energetic clubs. Another popular area is Bar Street at Citic City Plaza (CCP), a favourite

hangout for Shenzhen's youth.

Snake Pit



The Snake Pit in Shekou is one of those places that feels like a second home to many expats in Shenzhen. Open since 1987, it's actually the

longest-running expatriate bar in China. The menu is as diverse as the crowd, with everything from hearty burgers and Tex-Mex to lighter bites for grazing. Whether you're in the mood for a chilled beer, a strong cocktail, or even a cheeky shot, you'll find something to suit.

Photo: spooky_kid/Pixabay

Address: 12, Shuiwei Village, Shekou, Nanshan District, Shenzhen

Opening hours: Daily 4pm-2am

George and Dragon British Pub



Just a short walk from the bustling Shekou area, George & Dragon serves up a slice of classic British pub life in Shenzhen, with a

laid-back atmosphere that doesn't try too hard to impress. It's all about good food, good drinks, and an even better time. This cosy spot is home to the usual British pub favourites—Shepherd's Pie, a hearty chilli cheese hot dog, and a solid range of draft beers. But it doesn't stop there. The pub also offers a handpicked selection of UK ales and whiskies, perfect for pairing with a plate of barbecue or a filling meal.

Photo: Viivien/Shutterstock

Address: 7 Taizi Road, Shekou, Nanshan, Shenzhen

Opening hours: Daily 10am-midnight

Phone: +86 755 2669 8564

V Pub



V Bar at The Venice Hotel Shenzhen is a bit of a hidden gem in the city's nightlife scene. Situated poolside, it's got that laid-back island vibe, complete with a funky cocktail bar that's perfect for starting the night. The venue also boasts a fully equipped acoustic stage, making it a great spot for live music.

Photo: dotigabrielf/pixabay

Address: 9026 Shennan Road, Shenzhen

Club Viva



Club Viva is where Shenzhen's nightlife comes alive. Spread across three floors, this buzzing venue offers something for everyone.

On the main floor, you'll find the dance floor packed with energy, while the other levels are perfect for unwinding with creative cocktails, snacking on light bites, or challenging your friends to a game of darts, pool, or table football. For a quieter moment, head up to the sleek rooftop. With its stunning sea views and refreshing drinks, it's a great spot to catch your breath after a night of dancing.

Photo: Jacob Lund/Shutterstock.com

Address: 3rd floor of Sea World Square

Black Stamps Jazz Coffee



Black Stamps Jazz Coffee might sound like your average coffee shop, but this place is more of a hidden gem for those who love a relaxed, musical

atmosphere. While the focus is on jazz, the vibe often mixes in a bit of blues and electro, keeping things fresh and lively. A favourite hangout for expats, it's the perfect spot to unwind with a drink in hand, whether you're looking for a cosy afternoon or an evening out.

Photo: Igor Normann / Shutterstock.com

Address: 4, 5/F, Hailian Commercial Building, 1 Shangbu Road, Nanshan, Shenzhen

Opening hours: Daily 9:30am-10pm

Phone: +86 775 8609 8585

SHOPPING

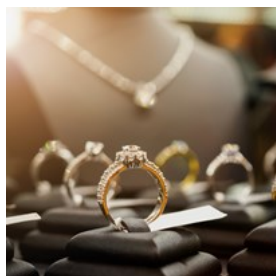


VGstockstudio/Shutterstock.com

Shenzhen's shopping scene is vibrant and varied, with mega malls offering everything from high-street fashion to the latest electronics. Bargaining is often part of the experience, so don't assume prices are fixed—a little haggling can go a long way, sometimes shaving off up to two-thirds of the marked price.

Thanks to competitive pricing, Shenzhen draws a steady stream of shoppers from far and wide, making it one of China's top spots for retail therapy.

The Mixc



A must-visit for anyone shopping in Shenzhen, The Mixc is a massive complex in Luohu District that goes far beyond the typical mall experience.

Spanning six floors, it's a blend of luxury brands, trendy boutiques, and lifestyle spots that make it easy to lose a few hours—or an entire day.

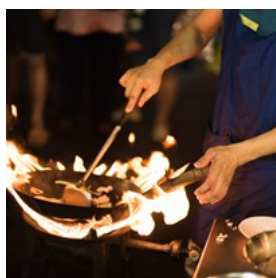
You'll find international designers alongside unique local shops, plus an Olympic-standard ice rink and a cinema if you need a break from shopping. The food courts alone are a world tour, packed with options from classic Chinese dishes to Italian gelato.

Photo: Kwangmoozaa/Shutterstock.com

Address: 1881 Baoan South Road, Luohu District, Shenzhen

Public Transport: Metro Lines 1 or 2 to Grand Theatre Station

Dongmen Pedestrian Street



One of the city's oldest commercial areas, Dongmen stretches through narrow alleys and buzzing streets, mixing Shenzhen's

historic charm with today's fast-paced energy. It's packed with a bit of everything—boutiques selling trendy clothes, street stalls with quirky accessories, and rows of shops where you can bargain for electronics and home goods.

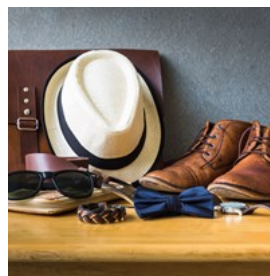
The real draw, though, might just be the food. Dongmen's food stalls and small restaurants spill out onto the street, serving everything from local dumplings and freshly baked pineapple buns to skewered meats and exotic snacks. It's busy, vibrant, sometimes chaotic—and that's

exactly why locals and visitors love it.

Photo: iChzigo/Shutterstock.com

Address: Dongmen Pedestrian Street, Luohu District, Shenzhen

COCO Park



COCO Park in Shenzhen's Futian District is a bustling hub for retail, dining, and nightlife. It houses a mix of international and Chinese

brands alongside an array of dining options that range from trendy tea shops to Western restaurants and even a German beer garden. Outside, the lively Bar Street attracts a vibrant evening crowd with clubs, pubs, and live music. Families can enjoy play areas for kids and events in the open-air central plaza, while shoppers can explore speciality kiosks and fashion boutiques across multiple floors.

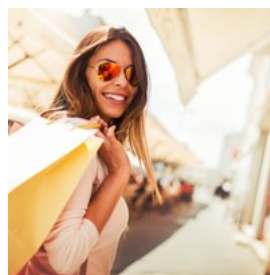
Photo: Still AB/Shutterstock.com

Address: 188, Jiabin Road, Futian District, Shenzhen

Opening hours: Daily 10am-10pm

Phone: +86 755 8202 1111

Coastal City



Tucked in the heart of Nanshan District, Coastal City is a sprawling 7000 square-metre shopping and leisure hub that's impossible to miss. The

complex is made up of three multi-floor buildings, each packed with a mix of well-known brands and local labels, covering everything from stylish men's and women's fashion to kids' clothing, beauty products, and electronics. Food lovers will appreciate the 30+ dining options spread across the mall, offering everything from

Western comfort food to authentic Asian fare.

Photo: Bobex-73/Shutterstock.com

Address: 15 Haide 3rd Street, Nanyou, Nanshan, Shenzhen

Opening hours: Daily 10am–10pm

Phone: +86 755 8612 5888

Garden City Center



Garden City Center is a spacious and modern shopping mall with a well-rounded selection of shops, including major international retailers, a

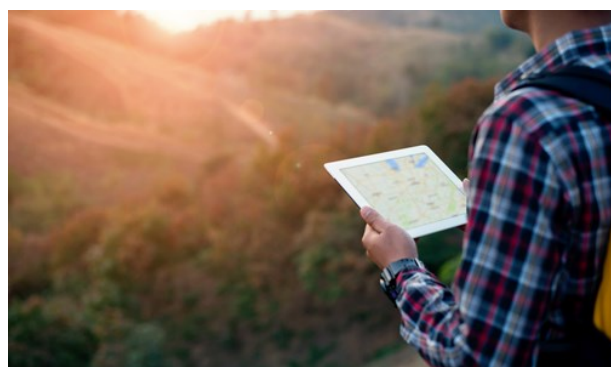
Walmart, and a five-screen MCL cinema.

Photo: Ground Picture/Shutterstock

Address: 1086 Nanhai Blvd, Nanyou, Nanshan, Shenzhen

Phone: +86 755 2683 2495

TOURIST INFORMATION



GNT STUDIO/Shutterstock.com

Passport/Visa



For most visitors to Shenzhen, a visa is required unless they are from one of the visa-exempt countries.

Nationals from several countries, including the United States, Canada, the UK, Australia, and most European countries,

can enter China visa-free for short stays of up to 15 days for tourism, business, or family visits.

Other countries, such as Japan, Singapore, and South Korea, are also exempt from visa requirements for short-term visits.

For those who need a visa, the process must be completed in advance at a Chinese embassy or consulate. Be sure to check the latest visa and entry requirements, as these can change frequently.

Photo: ConvertKit/Unsplash

Internet Access and VPN in China



Due to China's strict internet policies, access to many popular Western websites and apps—such as Facebook, Instagram, X (formerly Twitter),

Google services (including Google Maps), Skype, and others—is restricted. These websites are blocked as part of the government's internet censorship efforts, commonly known as the 'Great Firewall'.

To bypass these restrictions, many travellers use a VPN (Virtual Private Network), which can help access blocked sites. However, it's important to note that VPN use in China is legally complicated. While some VPN services are still used, unauthorized VPNs may be subject to scrutiny, and there have been reports of foreigners experiencing disruptions to their mobile service or being asked to visit the local police station if the use of a VPN is detected. It's critical to comply with local laws and regulations regarding VPN usage. If you choose to use a VPN, ensure it's approved by the Chinese government and used for legitimate purposes.

Since Google Maps is often unreliable in China due to restrictions on Google's services, travellers should consider using local alternatives such as Baidu Maps and AutoNavi (Gaode Maps). These apps offer more accurate and comprehensive mapping and navigation within China. However, most of these services are primarily in Chinese, so it might be helpful to familiarize yourself with their basic functions or use translation tools. Baidu Maps, in particular, is widely used and provides detailed information about public transport, routes, and traffic.

Photo: Christin Hume/Unsplash

Best Time to Visit



The best time to visit Shenzhen is during the spring (March to May) and autumn (September to November), when the weather is mild and pleasant, with temperatures between 20°C and 28°C. These seasons are ideal for outdoor activities, making them perfect for exploring Shenzhen's many attractions like theme parks, cultural sites, and nature reserves. Spring is especially beautiful, with flowers in bloom across the city, while autumn offers clear skies and cooler, more comfortable temperatures for sightseeing.

Visiting during these seasons also means you can enjoy some of Shenzhen's key events, such as the Chinese New Year celebrations in spring or the Shenzhen International Cultural Industries Fair in May.

Photo: Robert Bye/Unsplash

Shenzhen Bao'an International Airport (SZX)



Shenzhen Bao'an International Airport is located approximately 32 km from Shenzhen's city centre, with a travel time of around 30 minutes by taxi, depending on traffic conditions.

The airport is well connected to the city by various transport options. The Airport Express metro (Line 11) provides a direct and efficient route, taking about 30 minutes to reach central Shenzhen. In addition, there are numerous bus services that link the airport to key areas around the city, including major transport hubs like Luohu Railway Station. Taxis are available 24/7, offering a more direct route to your destination. For those travelling to Hong Kong, there is a ferry service from Fuyong Port, close to the airport.

Photo: Bao Menglong/Unsplash

Address: Shenzhen Bao'an International Airport

Phone: +86 755 2345 6789

Internet: www.szairport.com/szairporten/index.shtml

Public Transport



Shenzhen's public transport system is a reliable and affordable way for travellers to get around the city. The metro system is

extensive, with 16 lines covering the majority of the city, including popular tourist spots. Buses also provide wide coverage, although it may be less intuitive for non-Mandarin speakers. Shenzhen has also developed a small tram network, though it is less prominent.

For easy access, visitors can use the Shenzhen

Tong transportation card, which works on the metro, buses, and even some taxis. The card can be topped up at stations and convenience stores, and it offers discounts on fares compared to single-ride tickets. For those who prefer convenience, contactless mobile payment options like WeChat Pay and Alipay are also widely accepted on all public transport.

Photo: Joshua Fernandez/Unsplash

Taxi

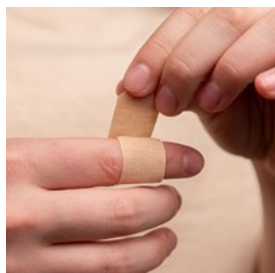


Taxis are readily available in Shenzhen, and they are metered, so you don't need to worry about negotiating fares. The typical taxi colour is orange, with the company name and driver's credentials displayed clearly. You can hail a taxi directly from the street or pick one up at designated taxi ranks.

For convenience, ride-sharing apps like Didi Chuxing are widely used in Shenzhen, offering an easy way to book rides via your smartphone. The app is available in English and accepts various payment methods, including Alipay and WeChat Pay.

Photo: Gustavo/Unsplash

Pharmacy



In Shenzhen, there are several well-established pharmacy chains that offer a wide range of health products, prescription medications, and over-the-counter remedies. Here are some of the main pharmacy chains in the city: China National Pharmaceutical Group (Sinopharm),

Watsons, and GuoDa Pharmacy.

Photo: Diana Polekhina/Unsplash

Address: Watsons - 3002 Dongmen Nan Road, Luohu District, Shenzhen

Opening hours: Daily 9:30am-8:30pm

Post



In Shenzhen, post offices typically operate from 8am to 5pm, Monday to Friday, with some branches also open on weekends. Services offered at these post offices include mailing packages and letters, postal savings, and international parcel services. Post boxes are available across the city and are relatively easy to locate, often marked by their distinctive dark green colour.

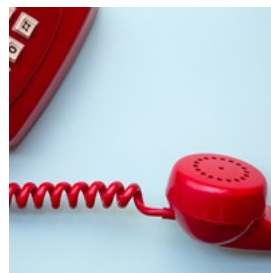
Photo: Ali Bakhtiari/Unsplash

Address: Shenzhen Central Post Office No. 1018, Baoan South Road, Futian District, Shenzhen

Opening hours: Mon-Fri 9am-6pm, Sat 9am-noon

Phone: +86 755 8211 0000

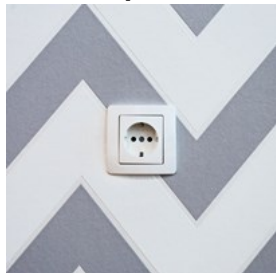
Telephone



Country code: +86 Area code: 755

Photo: Miryam León/Unsplash

Electricity



In China, the standard voltage is 220V at a frequency of 50Hz. There are three kinds of sockets widely used in Mainland China: type A, C, and I.

Type C, which has two round pins, is the one commonly seen in most European countries.

Photo: Neven Krcmarek/Unsplash

Population

13.3 million (2024)

Currency

Chinese Yuan (CNY), also known as the Renminbi (RMB)

Newspapers

Shenzhen Daily

South China Morning Post: www.scmp.com

China Daily

Emergency numbers

Police: 110

Ambulance: 120

Fire: 119