



Seattle, Washington

Photo: beboy/Shutterstock.com



Ryan C Slimak/shutterstock



CrackerClips Stock Media/Shutterstock.com



neelsky/Shutterstock.com

Welcome to 'The Emerald City', with its blend of laid-back and progressive vibes. As Washington State's largest city, Seattle is not just the home of the iconic Space Needle, Pike Place Market, and Chihuly Garden and Glass, but also the birthplace of grunge and global coffee joints like Starbucks and Tully's. Forget the rainy reputation; Seattle often outshines it with more sun than you'd expect!

Featured



T-Mobile Park

When visiting Seattle it is of paramount importance to attend one of America's...



Family Fun Center & Bullwinkle

Get ready for a day of fun! The Family Fun Center in Tukwila makes sure that...



Museum of Flight

Enjoy an all-encompassing aviation experience displaying a massive collection of...



Seattle Art Museum

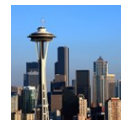
SAM, as the locals call it, is a world-renowned museum with three distinct venues...



Chihuly Garden & Glass

Chihuly Garden and Glass provides a look at the inspiration and influences that...

Top 5



Space Needle

Built for the 1962 World's Fair, the Space Needle is 605 feet high with an observation deck...



Pike Place Market Food Tour

Experience a variety of flavors, smells and sounds at one of Seattle's most famous markets...



Seattle Aquarium

The Seattle Aquarium is the ninth largest aquarium in the U.S. by attendance...



Argosy Cruises Harbor Tour

Choose from a variety of tours, many with dining options, from Elliot Bay and the waterfront...



Pacific Science Center

Washington's premier institution for fun and engaged learning sparks curiosity...

THE CITY



OpenRangeStock/Shutterstock.com

Seattle's charm lies in its blend of metropolitan bustle, idiosyncratic neighborhoods, and a natural playground of lakes and mountains. Here, you can switch from daytime kayaking to a sophisticated night at the opera. Local officials even came up with a new term — metronatural. The city pulses with a relaxed, educated and progressive vibe.

Nestled between Puget Sound and Lake Washington, Seattle boasts an engaging shoreline: think piers, waterside attractions, and water tours aplenty. The majestic Mount Rainier dominates the city's southeastern skyline on clear days, just 60 miles away. Heading north the same distance, you'll find Mount Baker, one of the world's snowiest locations.

Tech plays a significant role in shaping Seattle's culture. It's home to giants like Amazon, Microsoft in nearby Redmond, and Boeing — a major local employer. The aviation theme continues with The Museum of Flight, a crowd-pleaser that showcases the city's aerospace history.

DO & SEE



Emperorcosar/Shutterstock.com

A Seattle Double Decker Tour is an easy way to see the best sites of Seattle. Hop on or off at any attraction, or ride the entire loop for a complete tour. A lake cruise will give a uniquely different view of the city and its waters. Some lake tours offer dining options to enjoy while you take in spectacular waterfront views. Or, you can enjoy Seattle from both land and water on a one-of-a-kind Duck Tour aboard a WWII amphibious landing craft. Whichever you choose, a tour is a perfect, family-friendly way to explore the many sights, sounds and attractions of Seattle.

In addition to the Space Needle, Seattle's most recognizable landmark, visitors should be sure to include a visit to the world-renowned Seattle Art Museum (called SAM by locals). Popular outdoor activities include whale-watching tours, winery visits and the 270-foot waterfall at Snoqualmie Falls is a shutterbug's delight. Top off any day in Seattle with a wide choice of museums, live music venues and neighborhood coffee shops.

Space Needle



Built for the 1962 World's Fair, the Space Needle is 605 feet high with an observation deck at 520 feet and the rotating SkyCity restaurant at 500

feet. From the top of the Needle one can see not only the Downtown Seattle skyline, but also the Olympic and Cascade Mountains, Mount Rainier, Mount Baker, Elliott Bay and surrounding islands.

Photo: Rigucci/Shutterstock.com

Address: 400 Broad Street, Seattle

Opening hours: Operating hours are posted approximately one month in advance

Phone: +1 206 905 2180

Internet: www.spaceneedle.com

Pike Place Market Food Tour

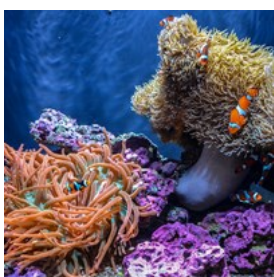


Experience a variety of flavors, smells and sounds at one of Seattle's most famous (and beloved) landmarks — Pike Place Market. Browse the 150

stalls of fresh seafood, fruits, vegetables, flowers, and local art. Then enjoy tastings from fresh produce and smoked salmon to local pastries and much more.

Photo: Angel Ceballos/Unsplash

Seattle Aquarium



The Seattle Aquarium is the ninth largest aquarium in the U.S. by attendance and the region's premier resource for hands-on marine

experiences and conservation education. The Seattle Aquarium offers fun, exciting ways to

discover more about the amazing Puget Sound and our world's one big ocean.

Photo: OpticKnot/Shutterstock.com

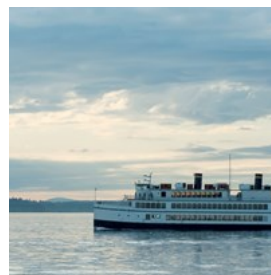
Address: 1483 Alaskan Way, Pier 59, Seattle

Phone: +1 206 386 4300

Internet: www.seattleaquarium.org

Email: info@seattleaquarium.org

Argosy Cruises Harbor Tour



Choose from a variety of tours, many with dining options, from Elliot Bay and Seattle Harbor. The tours provide wonderful views of the Seattle

skyline, waterfront and the Olympic and Cascade Mountains.

Photo: Natalia Bratslavsky/Shutterstock.com

Address: Argosy Cruises - Seattle Waterfront, 1101 Alaskan Way, Pier 55, Suite 201, Seattle

Phone: +1 206 623 1445

Internet: www.argosycruises.com

Email: sales@argosycruises.com

Pacific Science Center



Washington's premier institution for fun and engaged learning sparks curiosity in all ages with its award-winning interactive exhibits and

programs. Spend a few hours exploring the IMAX theater, Laser Dome, planetarium shows, live science demonstrations, and the tropical butterfly house.

Photo: Pavel Gabzdyl/Shutterstock.com

Address: 200 Second Avenue North, Seattle

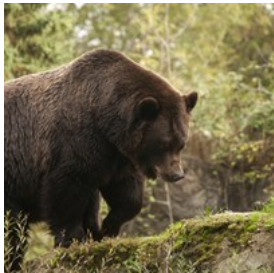
Public Transport: King County Metro Online, Seattle Center Monorail

Opening hours: Daily 10am-5pm

Phone: +1 206 443 2001

Internet: pacificsciencecenter.org

Woodland Park Zoo



Seattle's 92-acre, award-winning zoo exhibits nearly 1,100 animals representing almost 300 different animal species - from tiny insects to the largest land mammal on the planet, the African elephant. Beside hosting beautiful animals, the Woodland Park Zoo provides shops and some dining options.

Photo: ScottWalmsley/Shutterstock.com

Address: South Entrance: 750 North 50th Street. West Entrance: 5500 Phinney Avenue North

Opening hours: Daily 9:30am-6pm

Phone: +1 206 548 2500

Internet: www.zoo.org

Email: zooinfo@zoo.org

Museum of Flight



Enjoy an all-encompassing aviation experience displaying a massive collection of flying machines from the first primitive gliders to today's most modern aircraft. The tour includes a stop at the "Red Barn" which was the original manufacturing facility for Boeing.

Photo: Alexander Tolstykh/Shutterstock.com

Address: 9404 East Marginal Way South, Seattle

Opening hours: Daily 10am-5pm

Phone: +1 206 764 5700

Internet: www.museumofflight.org

Seattle Art Museum



SAM, as the locals call it, is a world-renowned museum with three distinct venues: the Seattle Art Museum downtown, the Seattle Asian Art Museum in Volunteer Park, and the Olympic Sculpture Park along the waterfront. You can easily spend hours exploring the diverse art collections from various time periods and cultures at each location.

Photo: artyooran/shutterstock

Address: 1300 First Avenue, Seattle

Opening hours: Wed-Sun 10am-5pm, Mon & Tue closed

Phone: +1 206 654 3100

Internet: www.seattleartmuseum.org

Museum of Pop Culture



The Museum of Pop Culture delves into the world-shaping impact of pop culture through immersive exhibitions and interactive experiences. From rock music to science fiction, MoPOP showcases the creative expressions that define contemporary culture. The eccentric architectural style of the museum is a major draw in itself.

Photo: Felix Mizionnikov/shutterstock

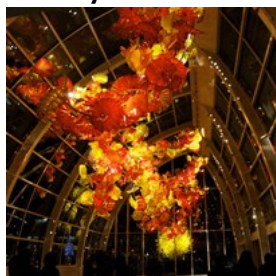
Address: 325 5th Avenue North, Seattle

Opening hours: Thu-Tue 10am-5pm, Wed closed

Phone: +1 206 770 2700

Internet: www.mopop.org

Chihuly Garden & Glass



Chihuly Garden and Glass provides a look at the inspiration and influences that formed the career of artist Dale Chihuly.

Located at Seattle

Center, Chihuly Garden and Glass includes an Exhibition Hall with eight galleries, the centerpiece Glasshouse and a lush Garden. The Glasshouse presents a suspended 1,400-piece, 100-foot-long sculpture; and the Garden is a backdrop for four monumental sculptures and other installations.

Photo: Rachel Nosce/Shutterstock.com

Address: 305 Harrison Street, Seattle

Opening hours: July 1 to August 20: daily 8:30am-9pm.

August 21 to August 31: Mon-Thu 9am-9pm, Fri-Sun 8:30am-9pm

Phone: +1 206 753 4940

Internet: www.chihulygardenandglass.com

More Info: Located next to the Space Needle

Mount St. Helens



South of Seattle lies the beautiful Mount Saint Helens, a national forest that houses a sleeping volcano. In close cooperation with the

visitor center you can buy the necessary passes and permits to go camping and hiking.

Additionally, they also pride themselves as a small museum with quite interesting exhibits.

Leave the urban world behind you and dive back into nature by visiting this exquisite location.

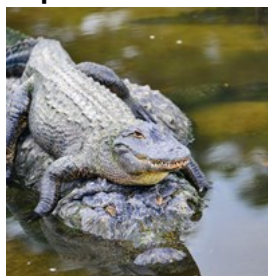
Photo: lauraslens/Shutterstock.com

Address: Mount St. Helens, Gifford Pinchot National Forest

Phone: +1 360 902 8844

Internet: www.parks.wa.gov/245/Mount-St-Helens

Reptile Zoo



If you aren't squeamish, a visit to the Reptile Zoo could be a fascinating experience. Located northeast of Seattle, it may require a bit of a

drive, but the journey is worth it. The zoo houses a variety of reptiles, including snakes, turtles, alligators, and even arachnids. For those interested in keeping reptiles as pets, the zoo offers expert advice on how to start as a beginner.

Photo: Orhan Cam/Shutterstock.com

Address: 22715 U.S. Route 2 B, Monroe, WA

Phone: +1 425 971 0435

Internet: www.thereptilezoo.org

K1 Speed



The wind through your hair, becoming teary eyed from the sheer speed, this is what will happen as you enjoy the 4 wheeled beasts on the tracks.

Race around using 20-horsepower electric karts in an indoor environment. This is what K1 Speed offers, and they do it well. They offer a special 'Arrive and Drive' option which is especially handy for tourists as you can come and can race a 14 lap race right away with no strings attached. Gear up to race against your friends, family or even the K1 staff.

Photo: Sergey Smolentsev/Shutterstock.com

Address: 2207 Bel-Red Road, Redmond, WA

Opening hours: Mon-Thu noon-10pm, Fri noon-midnight, Sat noon-midnight, Sun 10am-10pm

Phone: +1 425 455 9999

Internet: www.k1speed.com/seattle-location.html

Email: sales@k1speed.com

Family Fun Center & Bullwinkle's Restaurant



Get ready for a day of fun! The Family Fun Center in Tukwila makes sure that you will have an awesome day filled with high-energy activities.

From batting cages, to bowling, bumper cars and laser tag, they have it all. There are fun things to do for people of all ages, so be sure to visit them when you're going around Seattle.

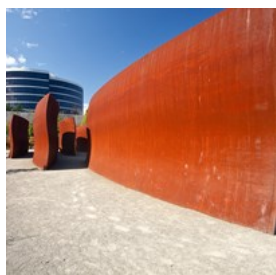
Photo: Aleksandar Karanov/Shutterstock.com

Address: 7300 Fun Center Way, Tukwila

Phone: +1 425 228 7300

Internet: bullwinkles.com/tukwila

Olympic Sculpture Park



The iconic Olympic Sculpture Park of Seattle features an amazing combination of both art and nature. It is interesting to mention

that the admission is free, and allows you to observe all art on your own leisure. Some of these interesting art pieces include "Neukom Vivarium", which is a large greenhouse with various plants and trees. Another piece is "The Schubert Sonata", a painted steel sculpture to honor musical composers. So when the weather allows it, visit the park and be amazed.

Photo: Mariusz S. Jurgielewicz/Shutterstock.com

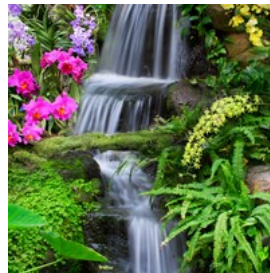
Address: 2901 Western Avenue, Seattle

Opening hours: Daily from sunrise to sunset

Phone: +1 206 654 3100

Internet: www.seattleartmuseum.org

Waterfall Garden



For many people in Seattle the need to escape the urban jungle arises, and so they go pay a visit during lunchtime to the Waterfall Garden.

With many tables and little eateries close by, you can enjoy a good book or just sit back and relax with some coffee. Don't expect to make any phone calls though, the roaring waterfall is more than just white noise in this case.

Photo: Goldenjack/Shutterstock.com

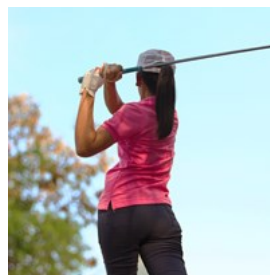
Address: 219 2nd Avenue South, Seattle

Opening hours: Daily 8am-5:45pm

Phone: +1 360 805 6700

Internet: pioneersquare.org/businesses/waterfall-garden-park

Bear Creek Country Club



The lush green fairways of Bear Creek Country Club offer 7,026 yards of golfing paradise, just 15 minutes from downtown Seattle. This premier

course has hosted prestigious events like the Hudson Cup and USGA tournaments. Whether you're aiming for a birdie or better, it's the perfect spot for golf enthusiasts to spend their day.

Photo: way31/Shutterstock.com

Address: 13737 202nd Avenue North East, Woodinville

Opening hours: Mon-Sat 9am-5pm, Sun 10am-4pm

Phone: +1 425 883 4770

Internet: www.bearcreekcc.com

Email: membership@bearcreekcc.com

T-Mobile Park



When visiting Seattle it is of paramount importance to attend one of America's most famous sports; Baseball. The Seattle Mariners play

games every year, and if you just so happen to be in the right season then don't miss out on this great opportunity. Feel the cheering of the crowd, the tension of the game, and even the occasional chance to catch a homerun ball!

Photo: ygor/Shutterstock.com

Address: 1250 1st Avenue South, Seattle

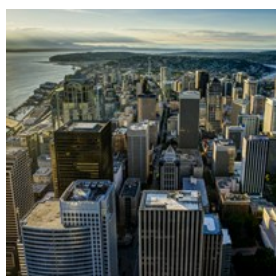
Phone: +1 206 346 4000

Tickets: www.ticketmaster.com

Internet: www.mlb.com/mariners/ballpark/events

Email: tickets@mariners.mlb.com

Sky View Observatory – Columbia Center



The Sky View

Observatory has been the tallest building in Seattle and Washington state since 1985. At 932 feet tall, it is twice the height

of the Seattle space needle tower, which you can even spot it from a distance. You can be certain this skyscraper is going to offer you sweeping city and mountain views, plus a cafe with bistro food, beer and wine.

Photo: Mathias Berlin/Shutterstock.com

Address: 700 4th Avenue, Seattle

Phone: +1 206 386 5564

Internet: skyviewobservatory.com

Brandon Lee & Bruce Lee's Grave Site



Visit the last resting place of the legendary Bruce Lee and his son. With his gravestone well maintained and where flowers are placed upon a

daily it's a sight to behold. If a famous gravestone tour is one of your goals in Seattle, make sure to also visit Jimi Hendrix's grave in Greenwood Cemetery as well as the grave of Suquamish & Duwamish leader Chief Seattle (Si'ahl) — the Namesake of the City of Seattle.

Photo: Mediawithoutborders/Shutterstock.com

Address: Lake View Cemetery, 1554 15th Avenue East, Seattle

Opening hours: Daily 9am-8pm

Phone: +1 206 322 1582

Internet: www.lakeviewcemetery.com

More Info: Just like any graveyard, it is appreciated to remain respectful and keep sound to a minimum.

Gas Works Park



The rusty towers of Gas Works Park once converted coal and crude oil into gas. After running for half a century and being shut down in 1956,

the plant is now the center of a green park on the coast of Seattle and nature is slowly regaining its territories by covering parts of the structure with layers of vegetation. A perfect location for a stroll and a view over Seattle's skyline.

Photo: alex/unsplash

Address: 2101 North Northlake Way, Seattle

Opening hours: Daily 6am-10pm

Phone: +1 206 684 4075

Internet: www.seattle.gov/parks/allparks/gas-works-park

Kubota Garden



Fujitaro Kubota left his home country, Japan, in 1907 and once he got homesick, he purchased a small piece of land in Seattle and started

building a Japanese garden of his very own. Over the years, the garden grew to a green space with bridges, Japanese trees, plants and water features. Today, the people of Seattle need not travel far to momentarily capture the sense of being transported to Japan.

Photo: Jaime Pharr/Shutterstock.com

Address: 55th Avenue South, Seattle

Opening hours: Daily 7:30am-8pm

Phone: +1 206 725 5060

Internet: kubotagarden.org

Email: info@kubotagardens.com

DINING



Brent Hofacker/Shutterstock.com

Seattle's dining scene is surprisingly diverse. In addition to the expected Northwestern style seafood restaurants and steakhouses, visitors will find a variety of restaurants with influences from Latin America, Asia, France and other places not normally associated with the Northwest. Many restaurant menus are rooted in fresh seafood, an abundance of small-scale producers, great local wines and an ever-growing pool of talented chefs.

Foodies will enjoy the Savor Seattle Food Tour at Pike Place Market. This two-hour walking tour gets behind the scenes to experience the sights, sounds, and flavors of this historic 105-year old landmark. A gourmet restaurant tour and a chocolate tour are also available in the city.

Fisherman's Restaurant & Bar



Experience the best in fresh Northwest seafood. Located at the end of Pier 57 with amazing waterfront views. On the menu you will not only

find mouth-watering seafood dishes such as grilled salmon fillet and king crab, but also pasta dishes and steaks.

Photo: Natthawon Chaosakun/Shutterstock.com

Address: 1301 Alaskan Way South, Seattle

Opening hours: Mon-Thu 8am-9pm, Fri-Sat 8am-9:30pm,

Sun 8am-9pm

Phone: +1 206 623 3500

Internet: www.thefishermansrestaurant.com

El Gaucho



Seattle's premier steakhouse, where the details are carefully and thoughtfully executed and where every guest receives impeccable

service and high quality food. Enjoy your delicious 28-day dry-aged steak while listening to live jazz piano music.

Photo: Stockcreations/Shutterstock.com

Address: 2505 First Avenue, Seattle

Opening hours: Tue-Sat 4pm-close. Last seating at 9pm

Phone: +1 206 728 1337

Internet: elgaucho.com

More Info: Reservation recommended

Andaluca Restaurant & Bar



Enjoy fresh seasonal Northwest foods combined with Mediterranean flavors and techniques in a warm, upbeat

atmosphere. Besides offering tasty food such as Andaluca paella, grilled halibut and grilled pork tenderloin, they also provide gluten-free menu. Reservations recommended.

Photo: Shebeko/Shutterstock.com

Address: 407 Olive Way, Seattle

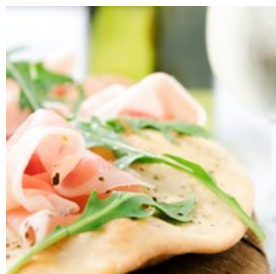
Opening hours: Breakfast: Mon-Fri 7am-11am, Sat & Sun 7am-noon. Dinner: Wed & Thu 5pm-9pm, Fri & Sat 5pm-10pm

Phone: +1 206 382 6999

Internet: andaluca.com

More Info: Located in the Mayflower Park Hotel

Tutta Bella Neapolitan Pizzeria



The Northwest's first Certified Neapolitan Pizzeria serves wood fired pizzas, salads, gelato and award winning cocktails. Aperitivo Italiano Happy

Hour 3-6 p.m. Their pizzaioli are skilled in giving you the toppings that you prefer or would like to see on a pizza. Let your mind go free and enjoy the hospitality of Italy.

Photo: Daxiao Productions/Shutterstock.com

Address: 2200 Westlake, Suite 112, Seattle

Opening hours: Daily 11am-10pm

Phone: +1 206 624 4422

Internet: www.tuttabella.com

Duke's Seafood



Award-winning chowders, fresh seafood, prize-winning Caesar salad, and outstanding cheeseburgers can all be found at Duke's. Duke set

a goal for himself, which is to serve the world's best seafood and provide it in the most natural way possible, without added chemicals. Enjoy the flavor of the sea with fish coming directly from Alaska.

Photo: Foodio/Shutterstock.com

Address: 1111 Fairview Avenue North, Seattle

Opening hours: Daily 11am-10pm

Phone: +1 206 283 8422

Internet: www.dukeseafood.com

Email: emailclub@dukeseafood.com

Alibi Room



A hip, stylish little Seattle restaurant and bar located under the Pike Place Market, the Alibi Room serves up excellent thin-crust pizzas and

other unique offerings while pairing the cuisine with some seriously stiff drinks. The Alibi Room gets seriously packed with the "in" crowd so it's best to make a reservation.

Photo: George Karounis/Shutterstock.com

Address: 85 Pike Street, Suite 410, Seattle

Opening hours: Mon-Wed 4pm-2am, Thu-Sun 11:30am-2am

Phone: +1 206 623 3180

Internet: www.thealibiroom.com

More Info: Happy Hour everyday noon-6pm. 21+ after 8pm

Altura



According to many people who have visited, or live in, Seattle feel that the Altura restaurant belongs in the top 10 of best restaurants in Seattle.

They serve many different sorts of seasonal foods and a friendly staff to accommodate you. While some would say the prices are on the high side, you can be guaranteed you will enjoy having dinner here as the quality is top notch according to a recent Seattle magazine.

Photo: dotshock/Shutterstock.com

Address: 617 Broadway East, Seattle

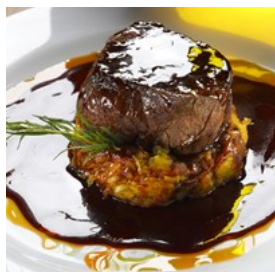
Opening hours: Tue-Thu 5:30pm-10pm, Fri & Sat 5pm-10pm, Mon & Sun closed

Phone: +1 206 402 6749

Internet: alturarestaurant.com

Email: info@alturarestaurant.com

Canlis



If you've always been looking for a time machine to go back to 1950 and enjoy dining with class dressed in formals, then Canlis is the

place to go in Seattle. With its golden ambiance, classic woodwork, and live music, the trip back in time is almost complete. Having more than 15 awards, make sure to try out their large selection of food on the menu. Do make a reservation to be certain you have spot when you decide to go to Canlis.

Photo: rocharibeiro/Shutterstock.com

Address: 2576 Aurora Avenue North, Seattle

Opening hours: Mon-Thu 5:30pm-10pm, Fri & Sat 5pm-11:30pm, Sun closed

Phone: +1 206 283 3313

Internet: canlis.com

Email: canlis@canlis.com

More Info: In some areas of the dining room a dress code is enforced

Salumi



Salumi resides in the historic pioneer's district and offers high quality gourmet cured meats in sandwiches and by the pound, as well as other traditional Italian food. This specific way to cure the meat is unique to Salumi and a tradition they have kept since 1903.

Photo: Ulkastudio/Shutterstock.com

Address: 404 Occidental Avenue South, Seattle

Opening hours: Mon-Sat 11am-3pm, Sun closed

Phone: +1 206 621 8772

Internet: salumideli.com

RockCreek Seafood & Spirits



True to its name, RockCreek serves eco-friendly seafood and spirits. The building itself has two stories and is inspired by a traditional fishing lodge and has both a restaurant as well as a bar. Step into an alternate reality where you have become a fisherman and enjoy the spoils at night in your fishing lodge, accompanied with some strong spirits of course.

Photo: Bogdanhoda/Shutterstock.com

Address: 4300 Fremont Avenue North, Seattle

Opening hours: Sun-Thu 4pm-10pm, Fri & Sat 4pm-11pm.

Brunch: Sat & Sun 9am-2pm

Phone: +1 206 557 7532

Internet: rockcreekseattle.com

Email: eat@rockcreekseattle.com

More Info: Happy Hour 4pm-5:30pm

The Pink Door



A restaurant with a touch of mystery and a very cozy atmosphere that serves homemade Italian/American food. In addition to your meal, there is also live burlesque shows and trapeze entertainment making sure your night is unforgettable.

Photo: Ekaterina Kondratova/Shutterstock.com

Address: 1919 Post Alley, Pike Place Market, Seattle

Opening hours: Mon-Sat 11:30am-1am, Sun 4pm-10pm

Phone: +1 206 443 3241

Internet: www.thepinkdoor.net

Email: office@thepinkdoor.net

More Info: Great terrace with Elliott Bay views

TAT'S Deli



TAT's is determined to show to everyone that Seattle is able to offer an incredibly tasty food experience. They have a wide variety of Philly steaks, hoagies, subs, soups and salads. If your throat feels a little dry after eating, TAT's offers various beverages as well, ranging from water to Ice Tea. Recently they have also added a food truck to their collection, so be on the lookout for them when travelling through the city!

Photo: Foodio/Shutterstock.com

Address: 159 Yesler Way, Seattle

Opening hours: Mon-Fri 8am-2pm, Sat 9am-4:30pm, Sun closed

Phone: +1 206 264 8287

Internet: www.tatsdeli.com

More Info: Busy during lunchtime

Spinasse



Step into a part of little Italy in the middle of busy metropolitan city. With its rustic interior, open kitchen and their use of local ingredients, you will experience a very authentic meal. For the people who have the keg instead of the six-pack, Spinasse offers various foods such as salmon wrapped in chard. With such a wide selection of food it is possible to please any kind of customer.

Photo: S_Photo/Shutterstock.com

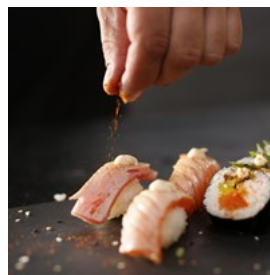
Address: 1531 14th Avenue, Seattle

Opening hours: Daily 5pm-10pm

Phone: +1 206 251 7673

Internet: spinasse.com

Mashiko



Mashiko is a creative place with a live webcam at the bar. It's also Seattle's first sushi bar that is completely sustainable. This means you can fully enjoy well prepared food and know that you do not harm the world's animal population.

Photo: Robert Przybysz/Shutterstock.com

Address: 4725 California Avenue South West, Seattle

Opening hours: Mon & Wed-Sun 5:03pm-9pm; Tue closed

Phone: +1 206 935 4339

Internet: www.mashikorestaurant.com

More Info: Make sure to check their website for any discount coupons they might offer!

Lola



A restaurant owned by the larger restaurant chain 'Tom Douglas', Lola is Greek inspired and serves various meals in that region. The interior

is cozy and the service is highly valued by its customers. They use a variety of flavors to make dishes containing kabob with lamb, portobello mushrooms, as well as various seafood dishes.

Photo: Valery121283/Shutterstock.com

Address: 2000 4th Avenue, Seattle

Opening hours: Mon-Thu 6am-11pm; Fri 6am-midnight; Sat & Sun 7am-3pm / 4pm-midnight

Phone: +1 206 441 1430

Internet: www.lolaseattle.com

More Info: Reservation recommended

Metropolitan Grill



If juicy, tender steaks with succulent flavors is something you are looking for, then head over to this popular steakhouse. The friendly

and attentive team will make sure your evening will go smoothly and serve you quality beef which are all hand selected by the Executive Corporate Chef, Eric Hellner.

Photo: HLPhoto/Shutterstock.com

Address: 820 2nd Avenue, Seattle

Opening hours: Daily 4:30pm-9:30pm

Phone: +1 206 624 3287

Internet: www.themetropolitangrill.com

Email: themet@conrests.com

More Info: Voted best steak in the town

Din Tai Fung



Din Tai Fung is the hugely popular Taiwanese-based dumpling chain with locations in the United States, Taiwan, Japan,

Singapore, South Korea and Australia to name a few. From the menu you can pick mouth-watering food such as signature pork dumplings (xiao long bao), shrimp and pork wontons, soup dumplings and chicken fried rice.

Photo: K321/Shutterstock.com

Address: 2621 North East 46th Street Seattle

Opening hours: Sun-Thu 11am-9:30pm, Fri 11am-10pm, Sat 10am-10pm

Phone: +1 206 525 0958

Internet: www.dintaifungusa.com

Email: guestservices@dintaifungusa.com

The Independent Pizzeria



Here you'll be able to eat thin-crust pizzas with creative toppings while enjoying the view of Lake Washington. The

Independent Pizzeria's menu also features their house-baked bread and salads with cheese and tomatoes as starters, as well as a rotating selection of craft beer and wines highlighted on a chalk board at the entrance.

Photo: Joshua Resnick/Shutterstock.com

Address: 4235 East Madison, Seattle

Opening hours: Thu-Sun 3:30pm-8pm or until they sell out

Phone: +1 206 860 6110

Internet: www.theindiepizzeria.com

Email: theindiepizzeria@gmail.com

CAFÉS



Maridav/Shutterstock.com

Seattle is home to both Starbucks and Tully's Coffee, but these two caffeine-driven powerhouses are not alone in café offerings of the city. Many independent cafés are finding their niche with a wide-variety of coffee roasts, specialty pastries and food items. A short walk in most any direction will bring you quickly to a café to enjoy a unique treat and a cup of Joe.

True coffee worshipers should visit the very first Starbucks which opened in 1971 in the Pike Place Market in downtown Seattle. Because the Market is a historic district with design guidelines, the store retains its original look.

Van Gogh Coffeehouse



With over 15 years of experience in making coffee, the Van Gogh Coffeehouse is an experience every visitor in Seattle needs to have.

The Coffeehouse is a small coffee shop nestled in the heart of Seattle's Wedgwood neighborhood. They feature fast and friendly baristas, excellent espresso, breakfast sandwiches, made to order Panini and a cozy community gathering place.

Photo: Rawpixel dot com/Shutterstock.com

Address: Wedgwood Center, 8210 35th Avenue North East,

Seattle

Opening hours: Daily 7am-5pm

Phone: +1 206 523 1466

Internet: www.instagram.com/vangoghcoffeehouse

Email: contact@vangoghcoffeehouse.com

Artisan Café



Ever wondered where to find those small but cozy cafe's on a corner street? Then you might want to check out the Artisan Café. A tiny café by the

monorail, the Artisan Café offers local coffee roasted in Seattle, cold and pressed sandwiches, Vietnamese baguettes, frozen yogurt and homemade baked goods with pastries from local bakeries.

Photo: Thaweerat/Shutterstock.com

Address: 2523 5th Avenue, Seattle

Opening hours: Mon-Fri 10am-2pm

Phone: +1 206 441 8885

Internet: www.instagram.com/seattleartisancafe

Email: info@artisancafeonvine.com

Le Panier



In the middle of the Seattle buzz, step into a piece of little France by going to Le Panier. They are a bakery with a French heritage, and will

prepare various kinds of sandwiches and croissants. Prices vary for each prepared item, so it is possible to go for a lunch or even for a small snack.

Photo: AppleZoomZoom/Shutterstock.com

Address: 1902 Pike Place, Seattle

Opening hours: Daily 7am-6pm

Phone: +1 206 441 3669

Internet: lepanier.com

Email: info@lepanier.com

Portage Bay Cafe



This busy cafe is famous throughout the neighborhood for its special all day breakfast menu that includes some international influences

with items like Swedish pancakes, flour cakes made with rice and tapioca, and veggie shawarma. Reserve a table in advance to avoid the crowd.

Photo: Anna Hoychuk/Shutterstock.com

Address: 4130 Roosevelt Way North East, Seattle

Opening hours: Mon & Wed-Fri 8am-1:30pm; Sat & Sun 8am-2pm

Phone: +1 206 547 8230

Internet: www.portagebaycafe.com

Email: roosevelt@portagebaycafe.com

Bakery Nouveau



Named best bakery in town multiple times, Nouveau opened its doors to the public more than 20 years ago, and continues to make history

with its tasty french-inspired pastries you can order at the counter. Every little bite of any of their one-of-a kind creations is pure magic, from the breakfast pastries to the bread. As for desserts, give the Phoenix Cake a try (a cool creamy mousse), which is one of their classics.

Photo: Stoica Ionela/Shutterstock.com

Address: 4737 California Avenue South West, Seattle

Opening hours: Wed-Sun 7am-5pm, Mon & Tue closed

Phone: +1 206 923 0534

Internet: bakerynouveau.com

Piroshky Piroshky



This small bakery takes its name from a traditional Russian pastries, namely piroshki (diminutive for "pirogi" — not to be confused with

their Polish namesake, which is more of a dumpling). With more than 20 different varieties served it can be difficult to choose, but the meat one is a safe bet. Enjoy the flavor of homemade piroshki while strolling around the Pike Public Market.

Photo: Dariia Belkina/Shutterstock.com

Address: 1098 Pike Place Market, Seattle

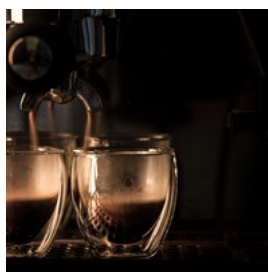
Opening hours: Daily 8am-7pm

Phone: +1 206 441 6068

Internet: www.piroshkybakery.com

More Info: Piroshky Piroshky has more shops at Century Square and in South Park

Ghost Alley Espresso



Right next to the Post Alley, the aroma of roasted coffee beans emanating from this tiny coffee shop - with some outdoor and indoor seats

- will conquer you. Alongside the delightful coffee, the must-try and highly recommended drinks are the "Mystery Mocha", customized for each customer, and the 'Salted Nut Latte', with hazelnut latte, house-made caramel syrup and smoked salts.

Photo: Gowithlight/Shutterstock.com

Address: 1499 Post Alley, Pike Market, Seattle

Opening hours: Daily 7:30am-5:30pm

Phone: +1 206 351 4417

Internet: ghostalleyespresso.com

Café Allegro



Café Allegro, with its decorated walls and wooden tables, is the oldest coffeehouse in Seattle, located in the University District. Since its opening in 1975, it represents a piece of history of the city itself. Coffee masters choose the finest coffee beans in order to offer a unique experience to their local clientele.

Photo: mavo/Shutterstock.com

Address: 4214 University Way North East, Seattle

Opening hours: Mon-Fri 7am-5pm, Sat & Sun 8am-5pm

Phone: +1 206 633 3030

Internet: seattleallegro.com

More Info: If you like the coffee, shop online their fresh-roasted coffee directly from their website

Zeitgeist Coffee



Sip a mug of delightful coffee while admiring local artists' art adorning the walls of this industrial-feeling space, located in the heart of Pioneer Square in downtown Seattle. Pair the coffee with yummy pastries or sandwiches (gluten free muffins and pastries also available).

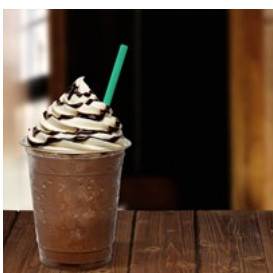
Photo: Pheniti Prasomphethiran/Shutterstock.com

Address: 171 South Jackson Street, Seattle

Phone: +1 206 583 0497

Internet: www.zeitgeistcoffee.com

Starbucks at 1912 Pike Place



The reason why this particular Starbucks draws so many visitors is because it is the oldest one in existence. Opened in 1971, it still serves

those customers who want to see where it all began, in a rather simple room with vintage wooden floor and counter.

Photo: M. Unal Ozmen/Shutterstock.com

Address: 1912 Pike Place, Seattle

Opening hours: Daily 6am-8am

Phone: +1 206 448 8762

Internet: stories.starbucks.com/stories/2015/store-tour-inside-1912-pike-place-seattle-usa

BARS & NIGHTLIFE



Maksym Fesenko/Shutterstock.com

Seattle has no shortage of local bars and nightclubs that are sure to make any visitor feel like a real native. Blues clubs, British bars, Irish pubs, lounges, dive bars and college bars are just a few of the varieties you will find. Just as Seattle's food scene relishes using local products, their bars show local pride with most having at least a couple of regional and local beers on tap. The city was early to the craft cocktail craze, in which hand-mixed cocktails with fresh juices and garnishes push your typical margarita mix.

During the 1980s and early 1990s, a collection of bands from Seattle cultivated a distinct sound commonly known as grunge. A mixture of hard rock, punk and metal, the so-called "Seattle sound" helped foster the contemporary rock movement. Several top grunge bands call Seattle home including Nirvana, Pearl Jam and Alice in

Chains.

74th Street Ale House



Boasting one of the best beer selections of any bar in Seattle, the 74th Street Ale House features local micro-brews, unique imports and some excellent pub grub. All of their food is made fresh to order with selections ranging from soups and salads to sandwiches and pastas along with plenty of vegetarian options.

Photo: MiloVad/Shutterstock.com

Address: 7401 Greenwood Avenue North, Seattle

Opening hours: Sun-Tue noon-8pm, Wed-Sat noon-9pm

Phone: +1 206 784 2955

Internet: seattlealehouses.com

Alibi Room



A hip, stylish little Seattle restaurant and bar located under the Pike Place Market, the Alibi Room serves up excellent thin-crust pizzas and other unique offerings while pairing the cuisine with some seriously stiff drinks. The Alibi Room gets seriously packed with the “in” crowd so it’s best to make a reservation.

Photo: George Karounis/Shutterstock.com

Address: 85 Pike Street, Suite 410, Seattle

Opening hours: Mon-Wed 4pm-2am, Thu-Sun 11:30am-2am

Phone: +1 206 623 3180

Internet: www.thealibiroom.com

More Info: Happy Hour everyday noon-6pm. 21+ after 8pm

The Beer Junction



Located in the heart of West Seattle, The Beer Junction is a bottle shop and beer bar offering Seattle's largest beer selection with 1,500 different domestic and imported beers from over 50 countries and 50+ rotating drafts, hard cider, mead, and kegs-to-go.

Photo: Master1305/Shutterstock.com

Address: 4511 California Avenue South West, Seattle

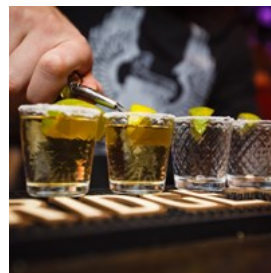
Opening hours: Tue-Sat noon-10pm, Sun noon-10pm

Phone: +1 206 938 2337

Internet: www.thebeerjunction.com

Email: Info@TheBeerJunction.com

The Knee High Stocking Company



Located in Seattle's Capitol Hill neighborhood, The Knee High Stocking Company is a prohibition-themed speakeasy bar (in an unmarked corner space, of course) that features craft cocktails and Filipino-American small plates.

Photo: Alexy Andr Tkachenko/Shutterstock.com

Address: 1356 East Olive Way, Seattle

Phone: +1 206 979 7049

Internet: www.kneehighstocking.com

Tractor Tavern



With old tractor parts and farming tools decorating the walls, the Tractor Tavern is a pure American nightspot that features a variety of music each week ranging from country to rock, from folk to jazz, and from zydeco to bluegrass.

Down-home cooking is also available at the “Double T.” Immerse yourself in the Texan-inspired venue.

Photo: Roman Voloshyn/Shutterstock.com
Address: 5213 Ballard Avenue North West, Seattle
Phone: + 1 206 789 3599
Internet: tractortavern.com
More Info: Door times listed on show calendar

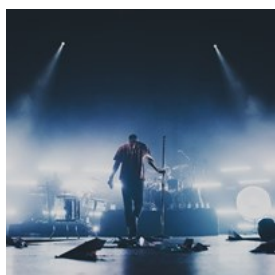
The Triple Door



When the sun's down, the moon accompanies you and Seattle's nightlife embraces you, The Triple Door is sure to provide you with an entertaining evening. As a renovated historical building, the original stage now provides live entertainment as you enjoy various wines and cocktails. Dinner is also provided during the shows, so you can enjoy eating among the musical company of the performers on stage.

Photo: Elnur/Shutterstock.com
Address: 216 Union Street, Seattle
Phone: +1 206 838 4333
Internet: www.thetripledoor.net

The Crocodile



With a big fan club, the Crocodile has been providing live entertainment since 1991. Several music genres being enjoyed at the venue ranging from hip-hop to punk rock. Many famous names have already set foot in the building such as Macklemore, Beastie Boys, The Lonely Forest and many more. Take a seat, enjoy fresh baked pizza, and cold drinks while enjoying their smashing shows.

Photo: Taya Ovod/Shutterstock.com
Address: 2505 1st Avenue, Seattle
Opening hours: Daily 5pm-2am
Phone: +1 206 420 6351
Internet: www.thecrocodile.com
Email: info@thecrocodile.com

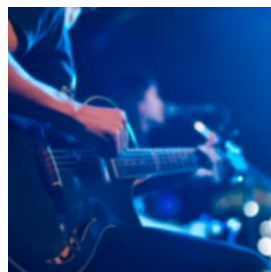
Tacoma Comedy Club



Just south of Seattle lies the Tacoma Comedy Club, with its cabaret style setup you can enjoy comedy shows sitting at small tables for 4-6 people. Food and beverages can be ordered on the spot such as nachos, fries, burgers and salads. Eat quickly though, because the jokes will be flying around the room and laughter is terrible at keeping food in your mouth. Their website features a calendar with all upcoming shows, but some big names such as Christopher Titus and Ivan Pecel have already been trodding the stage.

Photo: Marie C Fields/Shutterstock.com
Address: 933 Market Street, Tacoma
Phone: +1 253 282 7203
Internet: www.tacomacomedyclub.com
Email: info@tacomacomedyclub.com
More Info: There is an age limit 18+ after 8 pm and they require you to carry a valid ID card at all shows

Jazzbones



Jazzbones is a small venue compared to the large live entertainment clubs out there, however has a special, memorable atmosphere. With live bands every night, and sometimes even stand-up comedy, you can be certain it will be an amazing night. The menu is pretty diverse and even offers sushi, pizza & bar bites. With its cozy setup it

can become crowded at busy nights, however, the club is made up of two floors so you can retire to the second floor to dodge the masses.

Photo: PopTika/Shutterstock.com

Address: 2803 6th Avenue, Tacoma

Phone: +1 253 396 9169

Internet: jazzbones.com

More Info: Be there early to secure a parking spot and a comfortable table before rush hour

Von's 1000 Spirits



Ever seen a wall stacked with a 1000 different spirits? If not, then you should visit Von's Gustobistro. With drinks ranging from Tequila to Martinis you can be certain that you will have a great time there. Take a seat on one of the many shiny wooden stools at either two bars adorning both sides of the interior. While you're enjoying your drink, have a look around to scope out which drink will be your next one. The bartenders are extremely knowledgeable and can advise you on any of the bottles you might not recognize.

Photo: thanosquest/Shutterstock.com

Address: 1225 1st Avenue, Seattle

Opening hours: Daily 11am-midnight

Phone: +1 206 621 8667

Internet: www.vons1000spirits.com/#Vons-Seattle

The Tasting Room



The intimate Tasting Room is run by several regional wineries, offering vintages by the glass and bottle. Located in the Pike Place market it is easy to find, and even easier to enjoy. Especially on Friday and Saturday the tasting is

available late at night so you have the rest of the day to see the city. After a tasting you can also decide to buy that same wine and take it home with you.

Photo: Africa Studio/Shutterstock.com

Address: 1924 Post Alley, Seattle

Opening hours: Sun-Thu noon-8pm, Fri & Sat noon-late

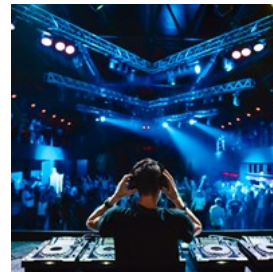
Phone: +1 206 770 9463

Internet: www.winesofwashington.com

Email: lysle@winesofwashington.com

More Info: Parking lots available in several nearby Market garages

Trinity



Dance the night away in Trinity, claimed by the people of Seattle as the number 1 nightclub. It features two levels and a large VIP section, all having their own unique design. It is possible to reserve a table in any of the sections such as the lounge or VIP section by calling or emailing them. Make sure to check their calendar as Trinity hosts many events which are sometimes accompanied by a dress code.

Photo: Glazog90/Shutterstock.com

Address: 107 Occidental Avenue South, Seattle

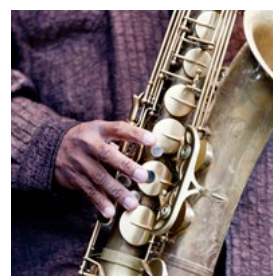
Phone: +1 206 697 7702

Internet: www.trinitynightclub.com

Email: info@trinitynightclub.com

More Info: This is a 21+ nightclub, therefore they require a valid ID at all time

Dimitriou's Jazz Alley

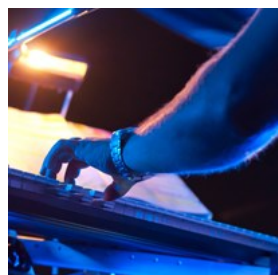


Right down in the core of Seattle lies Dimitriou's Jazz Alley, a restaurant with live entertainment. It doesn't matter where you sit, every table has a good view of the stage so you can enjoy a tasty

steak or fish dinner (or other various options) with amazing jazz shows accompanying you.

Photo: Markus Kaeremmerer/Shutterstock.com
Address: 2033 6th Avenue, Seattle
Opening hours: Tue-Sun 6pm-10pm, Mon closed
Phone: +1 206 441 9729
Internet: www.jazzalley.com
Email: jazzalley@jazzalley.com

Keys on Main



Seattle locals can't get enough of Keys on Main, thanks to its distinct entertainment style. Picture this: you're sitting at a cozy round table, surrounded by a group of 4-5 people, all focused on a stage where two performers are ready to play your favorite songs. Here's the twist — they're at the mercy of the audience. Got a song in mind? Slip them a request with a \$5 tip. If another patron craves a different tune, they can 'outbid' you with a higher tip, and the pianists will switch tracks. Some nights even erupt into karaoke showdowns.

Photo: kviktor/Shutterstock.com
Address: 1114 Howell Street, Seattle
Opening hours: Thu 8pm-midnight, Fri & Sat 8am-2am
Phone: +1 206 270 4444
Internet: www.keysonmain.com/seattle-homepage
Email: seattle@keysonmain.com
More Info: This is a 21+ club

Bathtub Gin & Co.



Some people just want to get away from the busy street life and grab a drink in the basement of an old hotel with authentic brickwork. If that sounds like you, then make sure to pay

Bathtub Gin & Co a visit. It's a stylish throwback the prohibition days when alcohol had to be hidden from view. They serve many cocktails as well as local gin and tonics. If you're truly up for a challenge however, ask the bartender to customize something for you personally!

Photo: Joshua Resnick/Shutterstock.com
Address: 2205 2nd Avenue, Seattle
Opening hours: Daily 5pm-midnight
Phone: +1 206 728 6069
Internet: www.bathtubginseattle.com
More Info: Visitors find the front door hard to find since there's no sign. The website recommends to look for the wooden door, 50ft. North of Blanchard Street

SHOPPING



Rawpixel dot com/Shutterstock.com

Seattle is home to excellent shopping all over the city with several unique shopping districts including Downtown Seattle, Pioneer Square, Chinatown-International District, University District and Pike Place Market.

Downtown Seattle shopping is a square of several blocks with large names such as Urban Outfitters, Nordstrom and Gap. Downtown is also the location of two large malls, Westlake Center and Pacific Place.

Laying claim as the city's "first neighborhood," Pioneer Square is a richly historic place known for its Renaissance Revival architecture, the

First Thursday Art Walk, nightlife and quirky boutiques. The Square runs between the Alaskan Way Viaduct and 4th Avenue, from Columbia Street on the north side to Lumen Field on the south side.

The Chinatown-International District is a multi-cultural, diverse area to find unique gifts and shops with roots from all over Asia. The district includes Chinese, Filipino, Japanese, Vietnamese, and Southeast Asian influence. Just south of Pioneer Square, the eight-block district is within walking distance from Downtown Seattle and Pike Place Market.

Located just north of downtown Seattle and close to the University of Washington, the University District, sometimes called U District, offers a unique formula of locally-owned boutiques and signature national retailers.

Pike Place Market is Seattle's famous waterfront shopping area that features local produce, fresh fish and an abundance of incredible restaurants.

Ben Bridge Jeweler



Since 1912, Ben Bridge Jeweler has been committed to offering the finest jewelry and unsurpassed personal service at the best value.

Photo: Syda Productions/Shutterstock.com

Address: 1530 5th Avenue, Seattle

Opening hours: Mon-Sat 10am-5:30pm, Sun 11am-5pm

Phone: +1 206 628 6800

Internet: www.benbridge.com

Email: info@benbridge.com

Crossroads Trading Company



Crossroads Trading Company is a new and recycled fashion retailer that has been serving its fashionable and environmentally conscious customers since 1991.

Photo: Pressmaster/Shutterstock.com

Address: 325 Broadway East, Seattle

Opening hours: Mon-Sat 11am-8pm, Sun 11am-7pm

Phone: +1 206 328 5867

Internet: crossroadstrading.com

Archie McPhee



Archie McPhee has been supplying gifts and toys to Seattle since 1983. Located in Seattle's Wallingford neighborhood, it's a

one-stop shop for party supplies, crafts, costumes, miniatures and the weirdest collection of toys and candy that you've ever seen. Widely considered to be a Mecca for connoisseurs of the strange, and one of Seattle's top ten weird destinations, it is truly an attraction without a parallel.

Photo: Oksana Bondar/Shutterstock.com

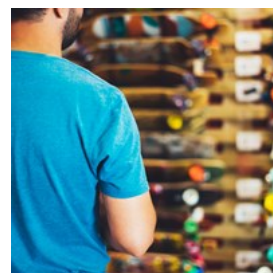
Address: 1300 North 45th Street, Seattle

Opening hours: Daily 11am-6pm

Phone: +1 206 297 0240

Internet: archiemcpheseattle.com

Zumiez



If you're looking to dive into action sports during your time in Seattle and you're looking for gear, then Zumiez would be among the best of

choices. Founded in 1978, they have a large array of clothing for the skater, surfer and snowboarder. Be sure to drop by one of their many stores in the city to fulfill your action sports needs.

Photo: Maria Savenko/Shutterstock.com

Address: 3000 184th Street Southwest #860, Lynnwood

Opening hours: Daily 11am-8pm

Phone: +1 425 776 4323

Internet: www.zumiez.com

More Info: There are several other outlet stores by Zumiez throughout Seattle, be sure to look for their logo while traveling around.

Car Toys



If you're going to drive around Seattle and maybe even the entire state, be sure to drop by Car Toys. They are able to sell you any electronics

for your vehicle. Whether you need more music, speakers or a new GPS device, they have it all. Not going by car, but by motorcycle? Nothing to worry about, Car Toys also offers equipment and accessories for special vehicles including motorcycles and ATVs.

Photo: Kaspars Grinvalds/Shutterstock.com

Address: 12815 Aurora Avenue North, Seattle

Opening hours: Mon-Sat 9am-8pm, Sun 10am-7pm

Phone: +1 206 364 5534

Internet: cartoys.com/pages/north-seattle-car-audio-store-info

Email: ns@cartoys.com

Sole Food



When walking around Seattle, your feet do all your work for you, so be sure to invest in some proper footwear. With their knowledgeable and

friendly staff, Sole Food makes sure you walk

away in style. Located in the University Shopping Center just South of Northgate Mall, you cannot possibly miss it while enjoying the city.

Photo: Kunlanan Yarist/Shutterstock.com

Address: University Village, 2619 Northeast University Village Street, Seattle

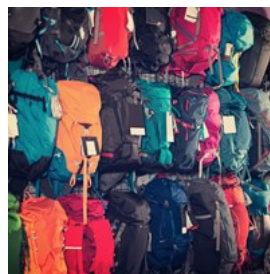
Opening hours: Mon-Sat 10am-8pm, Sun 11am-6pm

Phone: +1 206 526 7184

Internet: shopsolefood.com

Email: info@shopsolefood.com

Recreational Equipment Inc. (REI)



Exploring the city of Seattle is already a great adventure, but the surrounding nature has many great options as well. So why not stock up

on recreational equipment to be fully prepared for your outdoor adventure. REI offers apparel and equipment for all kinds of adventures. Whether you want to go snowboarding or camping, they can meet all your needs.

Photo: Iakov Filimonov/Shutterstock.com

Address: 222 Yale Avenue North, Seattle

Opening hours: Mon-Sat 9am-9pm, Sun 10am-7pm

Phone: +1 206 223 1944

Internet: www.rei.com/stores/seattle

Spa Nordstrom



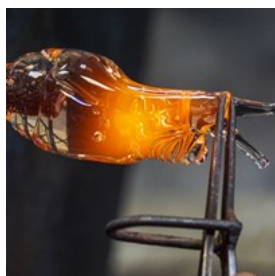
A long day of walking, your neck strained from looking up to the Space Needle, you'd probably like to relax in one of Seattle's best spas. With

both a spa and a clothing section that offers high-quality apparel, shoes and accessories for women, men and kids, Nordstrom definitely knows how to treat their customers like

royalties. Next to receiving spa treatment, they are also able to sell you a large variety of spa products to use when you're back at home looking through a photo album of your recent travels.

Photo: nd3000/Shutterstock.com
Address: 500 Pine Street, Seattle
Opening hours: Mon-Fri 9:30am-9pm, Sat 10am-9pm, Sun 10:30am-7pm
Phone: +1 206 628 1670
Internet: www.nordstrom.com/browse/beauty/services/
Email: contact@nordstrom.com
More Info: Be sure to make an appointment and arrive at least 15 minutes early to prevent delays in their schedule.

Seattle Glassblowing Studio



There are many options to shop in Seattle, but what if you could make your own products on the spot? The Seattle Glassblowing Studio

allows you to take classes in glassblowing but also to wander around their store and see what they have crafted before you. If you're interested in a piece, it is even possible to take it home with you.

Photo: 70X100/Shutterstock.com
Address: 2227 5th Avenue, Seattle
Opening hours: Daily 10am-6pm
Phone: +1 206 448 2181
Internet: seattleglassblowing.com
Email: sgs@seattleglassblowing.com

Elliott Bay Book Company



Defined by its large windows, the Elliott Bay Book Co. is easy to identify in the busy Seattle streets. It features a full service bookstore, and they can present you with over 150,000

different titles. While they offer the latest books on the market, Elliott Bay also has a section with a large collection of bargain editions. Be sure to drop by and get a book for your travels across Seattle.

Photo: Tomsickova Tatyana/Shutterstock.com
Address: 1521 Tenth Avenue, Elliott Bay, Seattle
Opening hours: Daily 10am-10pm
Phone: +1 206 624 6600
Internet: www.elliottbaybook.com
Email: orders@elliottbaybook.com

Vital T Leaf



A small Chinese-inspired tea store offering all kinds of teas as well as accessories. Drop on by to view a wide selection of White, Green, Oolong, Black & Red, and Pu-erh teas. It is even possible to buy teapots and filter bags, including travel mugs.

Photo: Africa Studio/Shutterstock.com
Address: 651 South Jackson Street, Seattle
Opening hours: Daily 10am-5:30pm
Phone: +1 206 682 7486
Internet: vtlseattle.com
Email: info@vitaltealeafseattle.com

Magic Mouse Toys



Step back into your childhood surrounded by two floors full of toys and other contraptions you used to play with when you were little. Magic Mouse prides itself on the fact they offer toys for all, and do not believe that toys are just for children but for adults as well. Make sure to pay them a visit, as they have been receiving customers since 1977, their service is top-notch.

Photo: Andrey Burstein/Shutterstock.com
Address: Mutual Life Building, 603 1st Avenue, Seattle
Opening hours: Daily 11am-5pm
Phone: +1 206 682 8097
Internet: www.magicmousetoys.com

Made in Washington



Located in the busy Pike Place Market, the Made in Washington store is sure to surprise you with their products on display. They offer products from many different categories including themed gifts, gift baskets, artisan candy, bath & body, pet treats, and many more. Whatever the goal of your visit, Made in Washington surely has something you need or want to bring home to the family.

Photo: gpointstudio/Shutterstock.com
Address: Pike Place Market, 1530 Post Alley, Seattle
Opening hours: Daily 9am-6pm
Phone: +1 206 467 0788
Internet: madeinwashington.com
Email: customerservice@madeinwashington.com

Pretty Parlor



If vintage clothing is what you are passionate about, then the Pretty Parlor boutique is the perfect spot for you here in Seattle. They carry marvelous vintage styles from 20s to 90s and every piece is hand selected by its owner Anna Banana. In Pretty Parlor's wide collection you will also find unique and original craftwork made by local independent designers. If you are a bride-to-be and looking to stand out, don't miss their bridal collection.

Photo: Nito/Shutterstock.com
Address: 119 Summit Avenue East, Seattle

Opening hours: Mon-Sat 11am-7pm, Sun noon-6pm
Phone: +1 206 405 2883
Internet: prettyparlor.com

Pike & Western Wine Shop



Since 1975, this family-run wine shop offers imported and domestic wine bottles, which you can purchase directly at the store or online. Every Friday afternoon, this old fashioned winery offers tastings of three new wines from their production for only \$5 (tax included). In summer, thanks to its central position it becomes a common spot for leisure-seekers.

Photo: Kaband/Shutterstock.com
Address: 1934 Pike Place, Seattle
Opening hours: Mon-Sat 10am-5pm, Sun closed
Phone: +1 206 441 1307
Internet: www.pikeandwestern.com
More Info: For Club members, the tasting is free of charge.

Pike Place Market



Open since 1907, Pike Place Market is one of the oldest continually operated public farmers' markets in the United States. Overlooking the Elliott Bay waterfront in Seattle, the Market is a place of business for many small farmers, craftspeople and merchants. Pay attention to the "Caution Low Flying Fish" sign as you approach the Pike Place Fish Market, famous for hurling each customer's fish across the counter for wrapping.

Photo: Katae Olaree/Shutterstock.com
Address: First Avenue & Pike Street, Seattle
Phone: +1 206 682 7453
Internet: www.pikeplacemarket.org
Email: info@pikeplacemarket.org

More Info: Be aware that not every market stall or restaurant closes at the same time, they have their own individual closing times. Visit the Pike Place Market website for specific opening times.

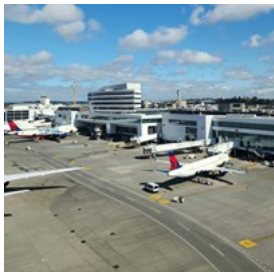
TOURIST INFORMATION



Ryan C Slimak/Shutterstock.com

When visiting any city in the U.S., make sure to always carry a valid ID with you, and adhere to the traffic regulations that might differ from your own country.

Seattle-Tacoma International Airport (SEA)



You can take public transportation, shuttles or taxis between Seattle and the Seattle-Tacoma International Airport. Lyft and Uber are also good options.

Sound Transit connects the airport to downtown Seattle on its Central Link light rail. Trains run every 7 to 10 minutes during most of the day, up to 20 minutes during non-peak hours. To get to the station, use Sky Bridge 6 on the north side of the airport.

Sound Transit also provides two bus routes from the airport. Route 560 connects the airport to Bellevue, Renton, Burien and West Seattle. Route 574 serves Lakewood, Federal Way and Tacoma.

King County Metro also provides three bus routes from the airport: RapidRide A-line (Federal Way), Route 161 (Burien/Kent) and Route 156 (Southcenter/Des Moines). You can use your phone's map app or the King County Metro Transit app to choose the fastest route. All buses leave from Door 6 outside of the baggage claim on the lower level.

Photo: Zoshua Colah/unsplash

Address: 17801 International Boulevard, Seattle

Phone: +1 206 787 5388

Internet: www.portseattle.org/sea-tac/ground-transportation

Passport/Visa



Citizens of the Schengen countries, the United Kingdom, Ireland, Canada, Australia, New Zealand, Singapore, Japan, South Korea,

Taiwan and the Kingdom of Brunei can visit the United States for up to 90 days without applying for a visa (as well as citizens of Andorra, Lichtenstein, Monaco and San Marino). Citizens of these countries must obtain an ESTA (Electronic System for Travel Authorization) before traveling. All other travelers must obtain a visa before visiting the United States. International travelers need a passport that is valid for at least 3 months after the end of their intended trip in order to enter the country.

Photo: mana5280/unsplash

Best Time to Visit



The perfect time to visit Seattle is late June or early September when the crowds disperse and hotel costs do go down. In these periods you can still enjoy the lovely weather but as it is unpredictable don't forget to bring a raincoat/umbrella. July and August — the driest and sunniest months of the year — mark the peak season, meaning that prices rise due to a significant presence of tourists.

Some key events throughout the year:

May & June: Seattle International Film Festival

May: Seattle Beer Week

Late July to August: Seattle Art Fair

September: Bumbershoot music festival

Photo: Celine Lityo/unsplash

Pharmacy



Chain pharmacies — CVS Pharmacy, Safeway, Walmart, Costco etc. — as well as smaller neighborhood stores operate in Seattle, and while working hours may greatly vary, a few are open 24/7. Pharmacy signs are often in red and white, and they are often located inside department stores. Most of the pharmacies sell both prescription as well as over the counter medicine.

Photo: Diana Polekhina/unsplash

Address: CVS Pharmacy, 1401 2nd Avenue, Seattle

Opening hours: Mon & Wed-Fri 9am-1:30pm / 2pm-8pm; Sat & Sun 9am-1:30pm / 2pm-6pm, Tue closed

Phone: +1 206 494 3251

Internet: www.cvs.com

Public Transport



The ORCA transit cards are the most convenient way to pay the fare on streetcars, light rail, buses and more. King County Metro

Transit:

The “Metro” public bus system operates throughout Seattle and King County.

Metro's Route 99 connects Seattle's International District, Pioneer Square, First Avenue destinations including the Seattle Art Museum and Pike Place Market, and Elliott Bay waterfront attractions such as the Olympic Sculpture Park, Seattle Aquarium and ferry services. Visit Metro Online for a route map and timetable.

South Lake Union Streetcar:

The South Lake Union Streetcar links Seattle's downtown core to the South Lake Union neighborhood and the new 12-acre Waterfront Park.

Seattle Center Monorail:

The nation's first full-scale commercial monorail system provides a fun, two-minute link from downtown Seattle to the Seattle Center daily. The Seattle Center station is across from the Space Needle. In downtown Seattle, catch the monorail at Westlake Center at Fifth Avenue and Pine Street.

Sound Transit:

Link Light Rail connects downtown Seattle with Sea-Tac International Airport, making interim stops in Southeast Seattle neighborhoods.

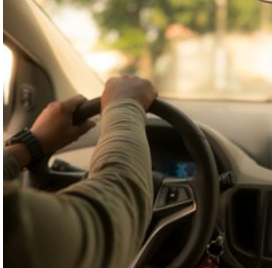
Sounder Commuter Trains operate between

downtown Seattle, Tacoma and Everett.

Photo: Josh Hild/unsplash

Internet: visitseattle.org/visitor-information/getting-around

Taxi



Seattle has several major taxicab companies to get you to and from Sea-Tac International Airport, as well as take care of your transportation needs

around town.

In downtown Seattle, Lyft, Uber, and metered taxis offer in-city transportation.

Photo: Jackson David/unsplash

Phone: +1 206 622 6500

Internet: seattleyellowcab.com

Telephone



Country code: +1 Area code: 206

Photo: cottonbro/pexels

Post



The United States Post Office offers all kinds of postal services. Some of the major post offices in Seattle are located at:

7724 35th Avenue

Northeast, Seattle

+1 800 275 8777

415 1st Avenue North, Seattle

+1 800 275 8777

3019 Northeast 127th Street, Seattle

+1 800 275 8777

Photo: Ron Adar/shutterstock

Electricity



All power sockets in the United States provide a standard voltage of 110–120V with a standard frequency of 60Hz. Plug type A has two flat

parallel pins.

Photo: ergonofis/unsplash

Population

749,256

Metropolitan area: 4 million (2023)

Currency

US Dollar, \$1 = 100 cents

Opening hours

Most stores are open all week from 10am to 8pm or later. Most bars and clubs close around 2am.

Internet

visitseattle.org

Newspapers

The Seattle Times: www.seattletimes.com

Seattle Weekly: www.seattleweekly.com

Seattle Post-Intelligencer: www.seattlepi.com

Seattle Chinese Post (Chinese language): seattlechinesepost.com

Washington Free Press: wafreepress.org

The Stranger: www.thestranger.com

Emergency numbers

911

Tourist information

Visit Seattle

701 Pike Street (Lobby of the Washington State Convention Center), Seattle, WA

+1 206 461 5888

visinfo@visitseattle.org

Open Mon–Fri 9am–5pm