

Säfsen Resort

Photo: Säfsen Resort



Petter Bulling/unsplash

In the scenic southwestern Dalarna, Säfsen Resort emerges as a year-round haven of experiences: from a fully-equipped ski facility in winter to exhilarating downhill biking and wilderness adventures in summer, spring and autumn. Säfsen offers a plethora of activities and adventures for the whole family. Additionally, the Säfsen Mountain Bike Park attracts both elite downhill and mountain bikers. The resort is conveniently located just 130 km from Örebro, 270 km from Stockholm, and 340 km from Gothenburg.



Tim Foster/unsplash



Johannes Andersson/unsplash

Featured



Styggens stuga
Styggens stuga, once home to Karl Johan Persson (born 1828), sits in Frösarå...



Säfsnäs Homestead Park
Säfsnäs Homestead Park, often considered Fredriksberg's best-kept secret, is...

Top 5



Skiing
19 slopes, 6 lifts and 115 km of ski tracks gives you and your loved one a l...



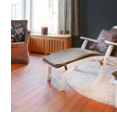
MTB / Cycling
Elite cyclist, advanced enthusiast, or curious beginner — Säfsen has cycling...



Fishing
In and around Säfsen, there are 175 lakes, ponds and streams offering fantas...



Hiking
In the splendid surroundings of Säfsen, you can embark on short and easy fam...



Säfsen Spa
Säfsen Spa offers the natural power to rejuvenate. It's a personal space for...

SÄFSEN RESORT



BaseEste/cc by 2.0/Flickr (image cropped)

Säfsen offers a wealth of experiences for the whole family throughout the year. For the little ones, the Adventure Barn is a firm favourite, and for those who relish nature, there are activities like hiking, paddling and horse riding. From December to April, Säfsen transforms into a true winter wonderland, with skiing, snowmobile tours, cosy fireside moments and après-ski, all tailored for family fun, especially for the little ones. For those seeking excitement during the non-snow seasons, the downhill park is a must-try for an adrenaline rush. If you're a foodie, the restaurants and bars are sure to delight you. For deep relaxation, the wilderness spa promises to be your perfect retreat. Additionally, Säfsen Conference offers conference facilities for up to 200 people.

Thanks to its central location in Sweden, Säfsen Resort has become a popular year-round destination, easily accessible from both southern and central Sweden. It's 340 km from Gothenburg, 270 km from Stockholm, and 120 km from Örebro.

DO & SEE



New Africa/shutterstock.com

Säfsen with Snow.

Winter is when Säfsen truly shines, offering a plethora of activities for both adults and children. The ski area boasts no fewer than 19 slopes and 6 lifts. Nestled in our forests are 115 kilometres of exquisite cross-country trails, providing you and your loved ones with a snowy and thrilling winter holiday. Beyond skiing, a variety of other high-energy or relaxing winter activities are available.

Säfsen without Snow.

Säfsen is a haven for nature-centric activities. With the Finnmark nature at its doorstep, during the non-winter season, a variety of activities such as hiking, paddling and horse riding are on offer. Säfsen's green season is all about recreation and adventure for the entire family. It's an opportunity to try something new, or simply unwind and relish the fresh air, stunning views, and unspoiled wilderness. Whether you opt for guided activities or prefer to hike and paddle at your own pace, Säfsen accommodates both laid-back and action-packed preferences, catering to every need and interest.

Skiing



19 slopes, 6 lifts and 115 km of ski tracks gives you and your loved one a lovely and exciting winter experience. In addition to skiing, there is a wide variety of action-packed or relaxing activities for the whole family.

Trail maps and piste maps are available at the Reception in Hyttan or at Säfsen Alpine.

Photo: Säfsen Resort

Opening hours: 22 December to 7 April: daily 9am-6pm.

Extended hours: Sat 9am-6pm

Internet: safsen.se/skidakning-i-safsen-dalarna

MTB / Cycling

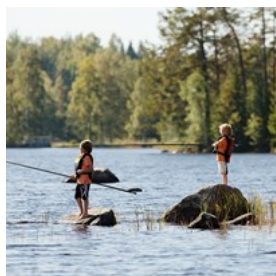


Elite cyclist, advanced enthusiast, or curious beginner — Säfsen has cycling adventures in store for everyone. With more than 350 kilometres of cross-country MTB trails, Säfsen stands as one of Sweden's premier destinations for downhill cycling.

Photo: Säfsen Resort

Internet: safsen.se/aktivitet/cykling

Fishing



In and around Säfsen, there are 175 lakes, ponds and streams offering fantastic fishing opportunities all year round. Here, the seasoned sport fisher finds new challenges, and beginners can easily take their first step into fishing. There's also accessibility for anglers with

disabilities. On your line, you might find rainbow trout, brown trout, char, pike and burbot.

A map of our fishing area is available for collection at the reception in Hyttan.

Photo: Säfsen Resort

Internet:

safsen.se/aktivitet/fiske-dalarna-safsen-for-hela-familjen

Hiking



In the splendid surroundings of Säfsen, you can embark on short and easy family outings, as well as more demanding long hikes.

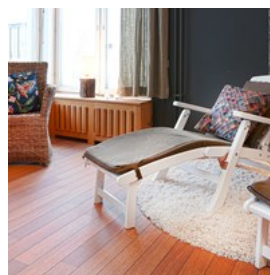
The journey to the many delightful nature spots is just as rewarding as the destinations themselves. For those seeking a bit more of a challenge, there's also organized wilderness hiking in hilly terrain. For these adventures, sturdy rubber boots are essential, as the trail lacks defined paths.

Hiking maps are available for collection at the reception in Hyttan.

Photo: Säfsen Resort

Internet: safsen.se/aktivitet/vandring-vandringsleder

Säfsen Spa



Säfsen Spa offers the natural power to rejuvenate. It's a personal space for relaxation and recovery, with the wilderness just around the corner, perfect for enjoying alone or with friends. Enjoy everything from classic massages to a variety of spa treatments. Säfsen's spa includes a relaxation area, sauna, and outdoor

jacuzzi. You can also join a morning yoga session at Herrgården.

The complete spa brochure is available for collection at the reception in Hyttan.

Photo: Säfsen Resort
Internet: safsen.se/aktivitet/spa

Säfsnäs Homestead Park



Säfsnäs Homestead Park, often considered Fredriksberg's best-kept secret, is a collection of historic buildings from the Säfsnäs region. These include a smokehouse, barn, pole shed and water mill, with 'Rik-Mats' cabin highlighting the early 1600s svedjefinnar era, associated with the practice of slash-and-burn agriculture. The park also commemorates the ironworks period from the 1720s to the early 1900s, featuring a piece of rail from the narrow-gauge railway. It showcases the 20th century's sawmill and paper mill history, including a simple mill used for paper production. The park is a starting point for nature trails, including a 3.3 km route around Mellansjön, and hosts various activities like heritage walks and midsummer celebrations.

Photo: Taxelson/public domain/wikimedia(image cropped)
Address: Säfsnäs hembygdsgård, Hammarberget 6, Fredriksberg
Internet: www.hembygd.se/safsnas

Styggens stuga



Styggens stuga, once home to Karl Johan Persson (born 1828), sits in Frösaråsen, north of Fredriksberg in Ludvika's western finnmark. This

well-preserved cottage, nestled in the forest, offers a glimpse into the past and the intriguing story of its former inhabitant. With informative displays, a well-maintained trail and facilities, it's worth a visit.

Photo: Zejo/public domain/wikimedia(image cropped)
Address: Styggens stuga, Ludvika kommun
Internet: www.visitdalarna.se/boka/se-gora/1498129/styggen-stugan/detaljer

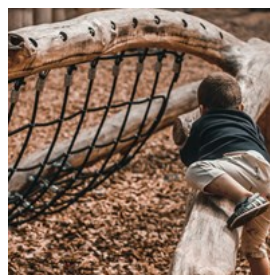
SÄFSEN WITH KIDS



JGA/Shutterstock.com

For families with children, Säfsen is the ideal destination. There's plenty to discover for both older and younger children, with all the fun conveniently close by. As a parent, you can fully relax, knowing everything is within easy reach. Some activities are suitable for children to enjoy on their own, while others are perfect for family exploration. Some days, you might cook your own meal in the log cabin, and on others, dine out at one of the restaurants.

Wilderness Playground



No more than a ten-minute walk from Hyttan, situated on a small peninsula, is Säfsen's wilderness playground — a playground with an exciting obstacle course made of logs and ropes. Here, the whole family

can play and have fun, compete and challenge each other. It's the perfect spot to spend a couple of hours together.

Photo: Rashid Sadykov/unsplash

Address: Säfsen Vildmarkslekplats

Internet: safsen.se/aktivitet/vildmarkslekplatsen

SnowCamp



SnowCamp specializes in classes for a range of action sports, perfect for both beginners and seasoned athletes. With extensive experience

since 2013, their facilities include four hectares of outdoor space and 600 m² indoors, featuring trampolines, a Superquad, foam pit and slip'n slides. It's an ideal destination for learning new tricks or just having fun with friends and family.

Photo: Matheus Costa/unsplash

Address: Ludvikavägen 49, Fredriksberg

Internet: safsen.se/erbjudande/snowcamp-lager

Children's Skiland — Barnens Skidland



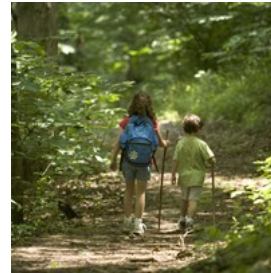
Barnens Skidland is a delightful area dedicated to making children's first skiing experiences as fun as possible. It provides a calm space for practicing

those initial turns. The area includes conveyor belts for those not yet ready for ski lifts and boasts Säfsen's easiest and slowest button lift. Children can also meet Filurius the moose and his friends, adding to the enjoyable and friendly skiing atmosphere.

Photo: Georg H./pixabay

Internet: safsen.se/skidakning-i-safsen-dalarna

Eldpallkojan



Eldpallkojan offers a unique outdoor experience in the scenic woods near Säfsen. Perfect for family excursions, this

traditional shelter, once used by forest workers, features an open central fireplace on a raised platform, with benches along the walls for resting. Modern adaptations include a sheltered picnic and grilling area, making it ideal for a leisurely hike or a family barbecue. The 2 km trail through the forest to Eldpallkojan, alongside Säfstjärn lake, provides an easily accessible adventure for all ages, from toddlers to grandparents.

Photo: PublicDomainImages/pixabay

Internet: safsen.se/aktivitet/utflykt-eldpallkojan

FOOD & DRINKS



gorillaimages/shutterstock.com

How about smoked moose? Or perhaps a sizzling grill buffet? In Säfsen, you'll find seasonal local produce, including berries, mushrooms, fish and game.

Good food and drink are essential to a holiday, and in Säfsen has several excellent restaurants and bars to choose from. Enjoy a bar menu, bring the whole family for a buffet evening, or

savour a lunch at Solbergets Wårdshus. After a long day in the fresh air, go for something warm at Smedjan Bar.

Wårdshus



Step into the warmth after a few runs on the slopes. With ski boots still on, you can enjoy a cup of hot chocolate with cream, hearty sandwiches, or a glass of fine wine or beer. Solbergets Wårdshus and Café are conveniently located right next to the lifts at the Säfsen ski area. When the spring sun shines, outdoor seating is also available.

At the Wårdshus, a hearty skier's lunch is served, catering to both adults and children. The café section offers a variety of lighter options for those looking for a quick bite. A special children's menu is available, featuring their favourite dishes.

Photo: Säfsen Resort
Internet: safsen.se/mat-och-dryck/wardshuset

Thai Taste4u



Thai Taste4u offers an authentic slice of Thailand in a quaint, welcoming setting. Known for its delicious food at reasonable prices, the restaurant brings the true flavours of Thai cuisine to its guests. From green and red curries to spring rolls, each dish is prepared with care and can cater to various dietary needs. Run by friendly owners from their home, it provides a genuine home-cooked Thai experience.

Photo: Vicky Ng/unsplash
Address: Stationsbacken 1, Fredriksberg

Phone: +46 70 786 54 45

Internet: thaitaste4u.se

Restaurang & Pizzeria Jägaren



Restaurang & Pizzeria Jägaren offers a slice of Sweden's beloved kebab-meat pizza tradition. Renowned for their fantastic oxfilé pizza with a crispy base and well-seasoned meat, they also excel in kebabs with unbeatable sauce.

Photo: Fanny Gustafsson/unsplash
Address: Tyforsvägen 2C, Fredriksberg
Phone: +46 591 205 50
Internet: restaurantguru.com/Restaurang-jaegaren-Sweden

Rosahöjdens Gård, Kök & Bageri



Rosahöjdens Gård, Kök & Bageri is a charming bakery with a big heart and a unique décor. They bake and cook everything from scratch using Swedish farm produce. Specialities include walnut bread, rhubarb buns, Röda Hasse, semla and dammsugare, with a delightful variety always on display. You can even watch the baking process through a glass wall!

Photo: Oskar Yildiz/unsplash
Address: Tyforsvägen 1, Fredriksberg
Phone: +46 70 200 11 53
Internet: www.rosahojden.se
Email: rosahojden@gmail.com

SHOPPING



Nomad_Soul/shutterstock.com

Going on holiday should be easy and convenient. In Säfsen there are many stores to choose from with everything needed for a successful stay.

Skidboden



In Skidboden, you'll find everything you need for a successful skiing vacation: jackets, hats, goggles, gloves, ski passes and more. The

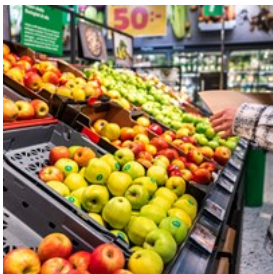
shop is situated centrally in the ski area.

Photo: David Becker/unsplash

Phone: +46 591 77 55 00

Internet: www.visitdalarna.se/en/do/rental/skidboden-safsen

Coop Nära Fredriksberg



Coop is a convenience store with generous opening hours offers a wide range of both ready-to-eat meals and raw ingredients. The

store also serves as an agent for the postal service and pharmacy.

Photo: Philip Myrtorp/unsplash

Address: Filipstadsvägen 2, Fredriksberg

Phone: +46 591 200 14

Ostkôja i Säfsen



Ostkôja, located in the heart of Fredriksberg, is a haven for cheese enthusiasts. Offering a wide selection of fine cheeses for every

occasion, from aged hard cheeses to soft dessert varieties, this cosy local shop caters to all tastes. Complement your cheese with smoked salmon from Gustavalax, beverages from Grangärde Musteri, and seasonal charcuterie. Discover an array of black, green, and red teas, and customise your own cheese board or opt for a pre-composed selection, especially for celebrations like New Year's.

Photo: Marios Gkortsilas/unsplash

Address: Ludvikavägen 19, Fredriksberg

Phone: +46 70 552 07 55

Internet: www.ostkoja.se

Loppis



Loppis, a second-hand store operated by Lions, offers a treasure trove of items from household clearances. With ever-changing stock, it's a

haven for bargain hunters supporting a good cause. Find everything from books and sweaters to unique knickknacks and souvenirs, all at reasonable prices.

Photo: Carl Tronders/unsplash

Address: Ludvikavägen 23, Fredriksberg

Lilla Glasboden



Lilla Glasboden is a small store selling decorative and utility items made of upcycled glass bottles. Their products are beautiful,

environmentally friendly, one of a kind, and make for excellent mementoes from your trip.

Photo: Wilhelm Gunkel/unsplash
Address: Säfsbyn 26, Fredriksberg
Internet: www.lillaglasboden.se

TOURIST INFORMATION



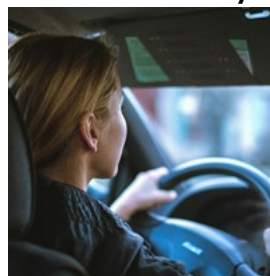
In Green/shutterstock.com

Whether you're heading to Säfsen by car, bus or train, aim for Fredriksberg in southwestern Dalarna. Säfsen is located 58 km west of Ludvika along road 245.

In case of illness during the stay, there is a nearby health centre and an emergency number available. The staff is always ready to assist.

In case of an accident, the ski patrol in the ski slopes and the fire brigade in the village of Fredriksberg are available for help. In emergencies, call 112.

Come to Säfsen by Car



The distance from Stockholm is 270 km, from Gothenburg 340 km, and from Malmö 590 km. Säfsen is situated 55 km west of Ludvika along road 245, and 55 km north of Filipstad on county road 26.

From Stockholm, the most convenient route is via Västerås, then on road 66 towards Fagersta and Ludvika. In Ludvika, turn right at the roundabout. When you approach Bysjön lake, turn left onto road 245. 18 km from Ludvika, turn left towards Sunnansjö. In Sunnansjö, turn right towards Fredriksberg. After 39 km, just before Fredriksberg and following a long downhill slope, turn left, signposted for Säfsen Resort.

From southwestern Sweden, take road 26 towards Mora, passing Kristinehamn and Filipstad. From this road, follow the signs to Fredriksberg and Säfsen. 22 km past Lesjöfors, in Tyfors, turn right towards Fredriksberg and Säfsen. Drive through Fredriksberg, pass the entrance to Säfsen Alpin on the right side and continue for another 800 m on the main road, following signs for Säfsen Resort and the cabin village.

Photo: Jan Baborák/unsplash

Come to Säfsen by Train or Bus



By train or bus, the journey from Stockholm to Ludvika takes just over four hours. From Ludvika, buses operated by Dalatrafik go to

Fredriksberg. From Gothenburg, there are trains to Örebro or Karlstad, and from there, buses to Ludvika.

Photo: Staffan Andersson/public domain/Flickr

Getting around in Säfsen



Getting around by car is the best way to explore the areas around Fredriksberg. In Säfsen, guests have easy access to the forest and are

within walking distance of beautiful swimming spots, cosy barbecue areas, playgrounds and great fishing lakes. Renting a canoe for a lake adventure or quickly hitting the MTB trails is straightforward.

During winter, those who prefer to leave their car at the cabin can take advantage of the Ski Bus for trips to and from the slopes.

Photo: Arūnas Naujokas/unsplash

Healthcare



The closest hospital, Vårdcentral Sunnansjö, is 36 km from Säfsbyn. Bus 297 can take you there in under an hour.

Photo: Karolina Grabowska/pexels

Address: Sjukstugevägen 3, Sunnansjö

Phone: +46 240 49 57 00

Population

Fredriksberg/Säfsen about 700 p.

Currency

Swedish Krona (Svensk krona, pl. Svenska kronor), SEK

Opening hours

Reception & Booking available all year around.

18 December to 6 April: daily 8am–9pm.

30 June to 21 August: daily 8:30am–7pm.

Low Season: Monday to Friday 9am–5pm, Saturday & Sunday 10am–5pm.

Internet

www.safsen.se

www.facebook.com/safsen

www.dalarna.se

Emergency numbers

112

Tourist information

Säfsen Resort

Säfsbyn 30, Fredriksberg

+46 591 77 50 00

info@safsen.se