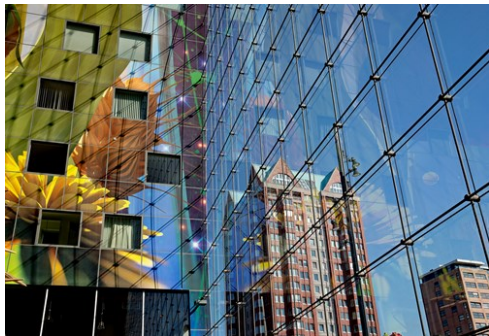




Rotterdam

Photo: Iris van den Broek



Iris van den Broek



Iris van den Broek



Guido Pijper

Rotterdam is a young, dynamic city, continually renewing itself at a rapid rate. Sparkling skyscrapers, an impressive port, trendy restaurants and food markets, renowned museums and fun festivals are the direct result of the can-do mentality of the Rotterdammers. Add to that the many extraordinary attractions and city tours — by bike, bus, boat or on foot. Now is the perfect time to explore the Netherlands' second-largest city!

Featured



TENT Rotterdam

TENT is an exhibition room and addresses significant and current development...



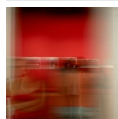
Museum Rotterdam, Museum O...

Museum Rotterdam is about the city and its people. It presents



Sonneveld House

The Sonneveld House stands adjacent to Het Nieuwe Instituut. Built in the ea...



Nederlands Fotomuseum

With its impressive collection of more than 5.5 million photos, the Nederlan...



Witte de Withstraat

The ultimate arts and culture street in Rotterdam is known for its artistic,...

Top 5



Rotterdam Zoo

For a splendid day out that the entire family is bound to enjoy, head to Rot...



Museum & Depot Boijmans Va...

Museum Boijmans Van Beuningen is one of the oldest



Hotel New York

Embark on the Watertaxi for a ride to Hotel New York. One of the most beauti...



Cube Houses

The Cube Houses (Piet Blom, 1984) are part of the Blaakse Bos (Blaakse Wood)...



Kunsthal Rotterdam

Kunsthal Rotterdam is housed in a striking building designed in 1992 by Rott...

TOP 10



GagliardiImages/Shutterstock.com

Rotterdam Zoo



For a splendid day out that the entire family is bound to enjoy, head to Rotterdam's famous zoo: Diergaarde Blijdorp. The Zoo is situated in the district of Blijdorp, in Rotterdam Noord. Stroll across the African Savannah and stand face-to-face with the giraffes. Walk on the seabed in the indoor Oceanium and meet stingrays and sharks. Discover the Amazon in the largest butterfly paradise of Europe: Amazonica. Experience tropical temperatures, fragrant flowers, hundreds of colourful South American butterflies and greedy piranhas.

Photo: Daarzijn/Rotterdam Partners

Address: Diergaarde Blijdorp, Blijdorpplaan 8, Rotterdam

Phone: +31 10 443 1495

Internet: diergaardeblijdorp.nl/en

Museum & Depot Boijmans Van Beuningen



Museum Boijmans Van Beuningen is one of the oldest museums in the Netherlands. Throughout the year, the museum hosts a rich spectrum of temporary exhibits on a variety of subjects.

Besides that, the collection of paintings, sculptures, drawings, etchings and objects is impressive. It features many major Dutch and European works spanning the period from the early middle ages to the 21st century, from Jeroen Bosch to Rembrandt and from Van Gogh to Salvador Dalí and Dutch Design.

The museum building is closed for major renovation, but the entire collection of 145,000 objects accessible to the public in other museums. Within the Museum park, Museum Boijmans Van Beuningen has built an art depot: Depot Boijmans Van Beuningen.

Photo: Iris van den Broek

Address: Museum park 24, Rotterdam

Phone: +31 10 441 9400

Internet: www.boijmans.nl/en

Email: info@boijmans.nl

Hotel New York



Embark on the Watertaxi for a ride to Hotel New York. One of the most beautiful historic buildings in the city, Hotel New York is a

Jugendstil structure. The former headquarters of the Holland-America Line looks out towards the sea and is now a restaurant and hotel with 72 differently styled rooms.

Photo: Iris van den Broek

Address: Koninginnenhoofd 1, Rotterdam

Phone: +31 10 439 0500

Internet: hotelnewyork.nl

Cube Houses



The Cube Houses (Piet Blom, 1984) are part of the Blaakse Bos (Blaakse Wood) development which borders on the Laurenskwartier district and the Waterfront area. The architect wanted to design a kind of village within the city and saw the houses as trees and the whole area as a wood. The Cube Houses are tipped to one side as it were, making three sides face the ground and three face the sky. Don't forget to visit the Kijk-Kubus (Show-Cube) to experience what life is like in a Cube House.

Photo: Iris van den Broek

Address: De kubuswoningen, Overblaak 70, Rotterdam

Phone: +31 10 4142285

Internet: www.kubuswoning.nl/en

Kunsthal Rotterdam



Kunsthal Rotterdam is housed in a striking building designed in 1992 by Rotterdam architecture firm OMA/Rem Koolhaas. The

Kunsthal always presents several exhibitions simultaneously, taking visitors on an exciting journey along various cultures and art movements. From modern masters and contemporary art to forgotten cultures, photography, fashion and innovative design.

Photo: Ossip van Duivenbode

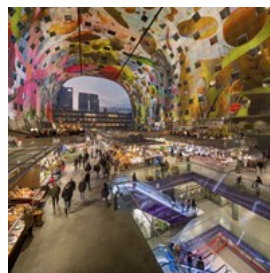
Address: Museumpark, Westzeedijk 341, Rotterdam

Opening hours: Tue-Sun 10am-5pm, Mon closed

Phone: +31 10 440 0300

Internet: www.kunsthal.nl/en

Markthal Rotterdam



You'll find an indoor market hall in various world-class cities, but the combination with luxury housing makes Rotterdam's Market Hall (MVRDV & INBO, 2014) the first of its kind. The apartments are arched over the food market in a horseshoe configuration. The main hall houses the market itself, as well as shops, various restaurants including Jamie's Italian (from Jamie Oliver) and a fourstorey car park situated below. Look up to enjoy the massive artwork sprawled across the ceiling: the 'Horn of Plenty' by Arno Coenen en Iris Roskam.

Sample the delights at the Markthal. In the first indoor market hall in the Netherlands, you can find nearly 100 fresh produce stalls, about 15 food shops and diverse restaurants including Jamie's Italian (from Jamie Oliver). If you look up you will see the biggest artwork in the Netherlands, the wall painting the Horn of Plenty.

Photo: Rotterdam Partners

Address: Dominee Jan Scharpstraat 298, Rotterdam

Opening hours: Mon-Thu 10am-8pm, Fri 10am-9pm, Sat

10am-8pm, Sun noon-6pm

Internet: www.markthal.nl

Rotterdam Central Station



Rotterdam Central Station (Team CS, 2014) is one of the most iconic architectural sites in Rotterdam. The roof over the tracks is covered in solar panels and the striking hall roof points towards the city centre. A number of historic

elements from the former station building (1957) by Sybold van Ravesteyn have been re-used, like the original clock in the front façade and the letters spelling out 'Centraal Station'. In the main hall you can find several shops, information about public transport and the Rotterdam Tourist Information. If you're looking for original souvenirs, don't miss shopping at 'Love Rotterdam. Gifts, Food & More'.

The square in front of the stations is a popular starting point for many walking and biking tours of Rotterdam's architecture.

Photo: Rotterdam Partners

Address: Rotterdam Centraal, Stationsplein 1, Rotterdam

Euromast



At 185 metres high, the Euromast is the highest lookout tower in the Netherlands, and should you — against all odds — get bored of the stunning views, you can always seek thrills in the Space Tower attractions situated at the very top of the Euromast. Euroscop, Rotterdam's highest panorama elevator with glass floor, gives you a bird's eye view of the city.

Photo: Rotterdam Partners

Address: Parkhaven 20, Rotterdam

Opening hours: Tue-Sun 10am-10pm

Phone: +31 10 436 4811

Internet: www.euromast.nl

Spido Harbour Tours



Go on a tour with Spido, one of Rotterdam's biggest attractions. The Port of Rotterdam tour (75 minutes) sails year-round and gives you a short but powerful impression of Rotterdam's container ports.

Photo: Guido Pijper

Address: Spido Hafentrundfahrt, Willemsplein 85, Rotterdam

Phone: spido@spido.nl

Internet: www.spido.nl

Email: spido@spido.nl

SS Rotterdam



The SS Rotterdam (1959), also known as "The Grande Dame", is the former flagship of the Holland-America Line. The steamship returned to its home port in 2008 after many voyages and nautical miles. Since then, it has been moored at the tip of the Katendrecht peninsula. It's used as a hotel, restaurant and event venue. The terrace on deck offers a unique view of the city. An audio tour guides visitors through the authentic details of the restored lounges and decks and offers a peek at the engine rooms.

Photo: Claire Droppert/Rotterdam Partners

Address: 3e Katendrechtse hoofd 25, Rotterdam

Internet: www.ssrotterdam.nl

CITY OF ARCHITECTURE

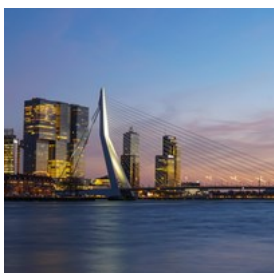


Simone Hutsch/unsplash

Full of energy and innovation, Rotterdam reinvented itself after the bombing of the Second World War. It broke with the past and chose modern architecture. The motto: light, air and space, was groundbreaking for that time. Rotterdam still embraces experimentation: almost anything is possible. Here, you are constantly surprised by new initiatives: from a rooftop city farm to a music festival in the harbour, from an exclusive rooftop bar to a brewery in an old warehouse.

If you love architecture then a visit to Rotterdam — with its patchwork of architectural styles — is a must. Icons of the Nieuwe Bouwen era stand beside the typical reconstruction-architecture from the sixties, seventies and eighties. They clash cheerfully with the hypermodern landmarks that have been built in recent decades: the Erasmusbrug, Rotterdam Central Station, De Rotterdam, the Timmerhuis and of course the Markthal.

Erasmus Bridge



Rotterdam's answer to Paris' Eiffel Tower and Sydney's Harbour Bridge, the graceful Erasmus Bridge opened in 1996 and was dubbed the Swan

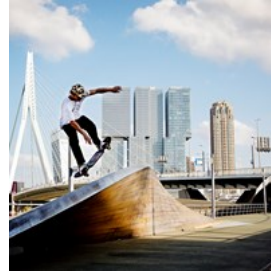
by the locals. The 800-metre long bridge spans the Maas River and links the northern and southern parts of Rotterdam.

Photo: Dennis Möller/unsplash

Address: Erasmusbrug, Erasmusbrug 1, Rotterdam

Internet: rotterdam.info/locaties/erasmusbrug

De Rotterdam



De Rotterdam is an iconic example of urban architecture, designed by Rotterdam based architecture firm

OMA/Rem Koolhaas. The

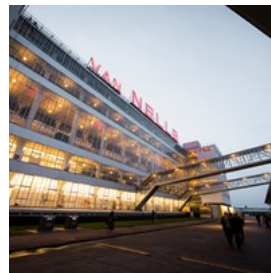
three linked towers are nearly 150 metres high, forming a 'vertical city' of high-class flats, a 4-star hotel, offices, shops, restaurants, fitness and parking facilities. The name refers to the SS Rotterdam, a steamship that once sailed a regular route to New York and offered a wide range of functions for its passengers' comfort.

Photo: Iris van den Broek

Address: Wilhelminakade 135, Rotterdam

Internet: derotterdam.nl/en

Van Nelle Fabriek



The Van Nelle Factory is a classic example of the Nieuwe Bouwen school of Dutch modernist architecture. The ingenious building was

designed to provide all the facilities for the employees close at hand, keeping the building fully above ground to create air, light and space. It was declared a UNESCO World Heritage Site in June 2014.

Photo: Guido Pijper

Address: Van Nelleweg 1, Rotterdam

Phone: +31 10 750 3500

Internet: www.vannellefabriekrotterdam.com/en/home

Groot Handelsgebouw



This national monument is a typical symbol of post-war reconstruction. The huge structure, 220 by 85 metres in size, was built in the early 1950s.

There are offices and shops distributed across various levels, with a 1.5 kilometre 'road' through them. It is a leading meeting place for entrepreneurs. Take the lift in the Groot Handelsgebouw to the 7th Floor for a beautiful view of Rotterdam Central Station.

Photo: Ossip van Duivenbode

Address: Stationsplein 45, Rotterdam

Phone: +31 10 240 3434

Internet: ghg.nl

Het Industriegebouw



Het Industriegebouw is from the same architects as the Groot Handelsgebouw. Both buildings have been a national monument since

1991. Its function as a business complex has been restored, it houses a variety of companies from tech start-ups to architects (re)creating the city and from your favourite concept store to breakfast diner.

Photo: Bart Hoogveld

Address: Goudsesingel 66, Rotterdam

Phone: +31 10 307 4686

Internet: hetindustriegebouw.nl/en

St Lawrence Church



The Late Gothic church (1449-1525) is the only building still remaining from the medieval city centre. The church received its current shape around 1525, but took heavy damage during the bombardment in May 1940. It now stands in striking contrast to the new architecture that surrounds it. Besides its regular church services, the building now also houses a permanent exhibition entitled 'A monument full of stories'.

Photo: Claire Droppert

Address: Laurenskerk, Grotekerkplein 27, Rotterdam

Phone: +31 10 413 1494

Internet: laurenskerkrotterdam.nl/en/visit

City Hall



The City Hall was one of the few buildings to survive the bombardment in 1940. The listed building in Beaux Art style with Byzantine,

Roman and Art Deco influences is symmetrically structured around an inner courtyard. The mayor's office is on the first floor of the right corner pavilion.

Photo: Ossip van Duivenbode

Address: Stadhuis Rotterdam, Coolsingel 40, Rotterdam

Luchtsingel



The Luchtsingel connects Rotterdam North to the Centre and revitalises a forgotten area. The project consists of a wooden pedestrian bridge

390-metres long, The DakAkker (Urban Roof)

Farm) on Schieblock, a public area at the former station Hofplein and park Pompenburg. Crossing the pedestrian bridge brings you to Station Hofplein, the former station building that is now home to a number of restaurants, shops and a jazz club.

Photo: Iris van den Broek

Address: Hofplein 19, Rotterdam

Internet: www.luchtsingel.org/en/about-luchtsingel

ATTRACTIONS & TOURS



Daarzijn/Rotterdam Partners

Sailing through the port of Rotterdam, marveling at the exotic animals in Diergaarde Blijdorp (Rotterdam Zoo) or climbing the Laurenskerk tower: Rotterdam has an amazing variety of fun things to do for visitors of all ages.

Miniworld Rotterdam



At Miniworld Rotterdam — the largest indoor miniature world in the Benelux — you'll be amazed by the mini landscapes, mini

residents, mini trains and a mini Rotterdam. The Dutch polder landscapes are interspersed with the Rotterdam port and industrial area and the architecture in the centre.

Photo: Miniworld/Rotterdam Partners

Address: Weena 745, Rotterdam

Phone: +31 10 240 0501

Internet: www.miniworldrotterdam.com

Email: info@miniworldrotterdam.com

Bike & Bite



Discover Rotterdam's hotspots and culinary delights on a guided bike tour with Bike & Bite. At each stop you'll enjoy the most striking and tastiest

bites and drinks that Rotterdam has to offer — like locally produced truffle croquettes, dry sausages and marmalades.

Photo: Rotterdam Partners

Phone: +31 6 17 47 94 20

Internet: www.bikeandbite.nl

Email: info@bikeandbite.nl

Hop-on Hop-off Citysightseeing



The Hop-on Hop-off Citysightseeing bus tour's red double deckers are the ideal way to discover the city. The bus rides on a fixed route along all the

tourist highlights such as the Euromast and Markthal, where you can hop on and hop off.

Photo: Rotterdam Partners

Internet: www.city-sightseeing-rotterdam.com

De Rotterdam Tours



De Rotterdam Tours offers guided tours of the Markthal and De Rotterdam, two of Rotterdam's famous architectural places of

interest. An experienced guide will tell you all about the design, the building process and the history of the building in question.

Photo: Claire Droppert/Rotterdam Partners
Internet: www.derotterdamtours.nl

FutureLand



Experience Europe's most modern port. In this free interactive information centre, you'll learn all about the Maasvlakte 2. Take a 3D-trip through this new Rotterdam port area or step into the port of 2033 with VR glasses. Take a cruise through this modern port and experience the giant cranes, ships and port for yourself.

Photo: Freek van Arkel/Rotterdam Partners
Address: Europaweg 902, Havennummer 8360, Maasvlakte Rotterdam,
Internet: www.portofrotterdam.com/nl/eropuit/futureland

Kinderdijk



The 19 windmills of the UNESCO World Heritage site Kinderdijk are world famous. Located in the town of Kinderdijk, in the northwestern point of the low-lying Alblasserwaard, the 19 windmills are located along the storage basins of the Overwaard and Nederwaard. Nowhere else in the world are there as many (historical) windmills together in one place.

Kinderdijk is close to Rotterdam. Going to Kinderdijk by Waterbus is the quickest and nicest way, and takes just 30 minutes. Take line 21 the Erasmus Bridge.

Photo: VVV Alblasserdam/Rotterdam Partners
Address: Nederwaard 1, Kinderdijk
Internet: kinderdijk.com

Plaswijckpark



Plaswijck Park has been a small-scale recreational park for over ninety years. It is located on the Bergse Achterplas in Hillegersberg-Schiebroek on the northern edge of Rotterdam. The park used to be known in the 1930s as the earthly paradise .

The park consists of a Speelwijck (play area), Dierenwijck (animal area) and Wandelwijck (walking area). Speelwijck includes a Port Playground, Monkey Playground and Traffic Playground. In the event of bad weather, guests can enjoy the House on the Hill — a giant playhouse where kids can jump on a trampoline on beds in the bedroom, squirt bubble bath in the bathroom and crawl and climb through the secret tunnels and passageways. Animals from around the globe live in Dierenwijck, including monkeys, owls, lynxes and goats. Wandelwijck offers various places to relax, including the English Garden and the Picnic Meadow.

Photo: Unit010/Rotterdam Partners
Address: Ringdijk 20, Rotterdam
Public Transport: Plaswijck Park can be reached by tram line 125 or 4 from Rotterdam Central Station in approximately twenty minutes.
Phone: +31 10 418 1836
Internet: www.plaswijckpark.nl

Historic Tram Line 10



The historic tram line 10 offers a hop on hop off city tour in a classic, renovated tram that dates from the 1930s. The tour route takes in all the touristic hot spots and attractions in the centre

of Rotterdam in one hour. You can also hop on or hop off at all the stops along the route to do some sight-seeing. The tram leaves once every 30 minutes from the Willemsplein in the Scheepvaartkwartier close to the Erasmus Bridge and Spido boat tours. Tickets can be purchased inside the tram and they are valid all day. The electronic transport chip card (OV chipkaart) cannot be used for this tour.

Photo: Guido Pijper/Rotterdam Partners

Address: Willemsplein 1, Rotterdam

Opening hours: The first ride departs at 11:00 from Willemsplein. Trams run seasonally

Internet: www.rovm.nl/en/citytours/tram-10

Amphibian Tour



Is it a ship? Is it a bus? Yes! Try out a new mode of transportation with a short and fun Splashtour of the city. Start with a drive past Rotterdam's

landmarks and finish off with a thrilling “splash”: a spectacular dive into the Maas River. The Splashtours Rotterdam city tour lasts about 60 minutes.

Photo: bertknot/cc by-sa 2.0/Flickr(image cropped)

Address: Parkhaven 9, Rotterdam

Internet: rotterdam.splashtours.nl/arrangement/splashtours

WATER, PORT & HARBOURS



Guido Pijper

As a port city, Rotterdam has unbreakable ties to the water, from the Maas River that flows right through the city to the many (historic) city harbours like Delfshaven. The city flows — courtesy of the Maas — seamlessly over into its industrial port that stretches for 40 kilometres to the Maasvlakte 2 and Hoek van Holland.

Maritime Museum Rotterdam



The Rotterdam Maritime Museum brings the seafaring world of the past, present and the future to life. As well as its permanent collection,

there are special exhibitions, events and guided tours on offer. The history of the Netherlands is covered with special attention being paid to the role of Rotterdam as a world port.

Photo: Ossip van Duivenbode

Address: Maritiem Museum Rotterdam, Leuvehaven 1, Rotterdam

Opening hours: Tue–Sat 10am–5pm, Sun 11am–5pm, Mon closed

Phone: +31 10 413 2680

Internet: maritiemmuseum.nl/en

Historic Delfshaven

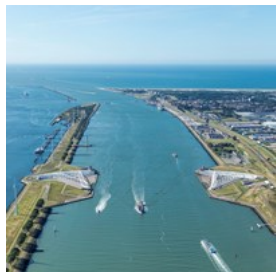


This picturesque yacht marina is one of the few parts of the old city that survived the 1940 bombardment of Rotterdam. It has a remarkable history, both as the departure point from which the Pilgrim Fathers sailed for America and as the birthplace of prominent Dutch maritime hero Piet Hein. The historic canal houses now hold cosy shops selling antiques and bric-a-brac, as well as lovely cafés and restaurants like brewery De Pelgrim and café De Oude Sluis.

Photo: Daniele Varlonga

Internet: www.historischdelfshavenrotterdam.nl

Keringhuis Public Water Center — Maeslantkering



The Keringhuis is the information centre for flood risk management in Zuid-Holland and the impressive Maeslant Storm Surge Barrier. The Dutch Delta Works are extremely important for the protection of our country against flooding, especially in the provinces Zeeland, Zuid-Holland and Noord-Brabant. The Delta Works construction is unique and therefore receives a lot of international attention. The Maeslant Storm Surge Barrier (Maeslantkering) is the last part of the Delta Works. It is the largest movable flood barrier in the world. This impressive construction can't be described in words, only experienced!

Photo: Guido Pijper

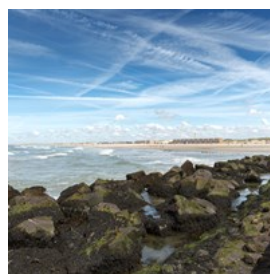
Address: Keringhuis, Maeslantkeringweg 139, Rotterdam

Opening hours: Mon-Fri 10am-4pm, Sat & Sun 11am-5pm

Phone: +31 88 797 0630

Internet: www.keringhuis.nl/english

Rotterdam Beach — Hoek van Holland



When the sun is out, there is nothing as refreshing as water, and there is plenty of that in Rotterdam! From the Nieuwe Maas River that flows right through the city to the lively city harbours. Do you long for a dip in the sea? In no time at all, you are lying on the beach at Hoek van Holland. This expansive stretch of beach is also part of Rotterdam. Sea, beach, dunes, promenade, harbour, polders and attractions: Hoek van Holland is very versatile.

In the summer, it's a pleasant, bustling seaside resort. However, Hoek van Holland is also attractive to visit in the other seasons. With a great cultural offering, a diverse hinterland, and giant ships from the international Port of Rotterdam passing by.

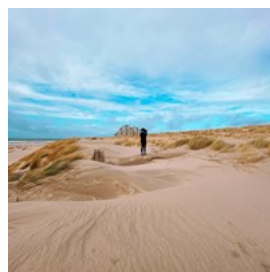
Photo: Rob van der Teen

Address: Hoek van Holland

Internet: en.rotterdam.info/rotterdambeach

More Info: The beach has a naturalist area between beach poles 116 and 117.

Maasvlakte Beach



New beach and dunes protect the Maasvlakte 2 from the North Sea in the west. There are plenty of opportunities for recreation on the Maasvlakte beach. Enjoy the quiet and the space to swim, sunbathe and stroll along the beach. Dogs are welcome if on a leash. A 500-metre stretch of beach at the northernmost entrance is reserved for nudist recreation. Have fun with a

kite, surfboard or cast out your fishing rod at the sports beach situated on the northern beach.

Photo: Jurre Houtkamp/unsplash

Address: Maasvlaktestrand, Maasvlakteboulevard

Internet: en.rotterdam.info/locations/maasvlakte-beach

More Info: The new swimming beach is easily accessible by car and bike and has seasonal catering facilities.

ART & CULTURE



Iris van den Broek

Rotterdam has a rich cultural scene centred largely around the cultural axis between Museumpark and Witte de Withstraat. This area includes acclaimed museums like Museum Boijmans Van Beuningen, Kunsthal Rotterdam and The New Institute, where large and small (international) exhibitions of old and new art, design and photography are presented. The numerous galleries around Witte de Withstraat and the city centre are also well worth your time.

You don't necessarily have to head indoors to see art in Rotterdam, though. Pablo Picasso, Joep van Lieshout, Henry Moore, Paul McCartney, Elmgreen & Dragset: masterpieces by the world's most famous artists can simply be visited in public in Rotterdam. If you love street art, feast your eyes on the beauties around the Luchtsingel pedestrian bridge and the Hofbogen arches, where major and impressive wall paintings by local artists are progressively covering the walls.

Rotterdam also boasts many theatres, concert halls and arthouse cinemas where you go to be inspired and touched by classical and contemporary music, theatre, cabaret, dance and musicals from local, national and international artists and companies.

Fans of arthouse films can indulge themselves at the charming old Cinerama cinema, at the LantarenVenster movie house or the new small Kino movie theatre. Or visit Rotterdam in January during the global International Film Festival Rotterdam.

Chabot Museum



The Chabot Museum is dedicated to the Dutch painter and sculptor Hendrik Chabot and showcases international expressionism in one of Rotterdam's most beautiful villas, a monument in International Modernist Style.

Photo: Iris van den Broek

Address: Museumpark 11, Rotterdam

Opening hours: Tue-Sat 11am-5pm, Sun noon-5pm, Mon closed

Phone: +31 10 436 3713

Internet: chabotmuseum.nl/english

Email: mail@chabotmuseum.nl

Museum Rotterdam, Museum of the City



Museum Rotterdam is about the city and its people. It presents the past, present and future of Rotterdam. The permanent exhibitions

feature photos and videos comparing the city before and after World War II.

Photo: Hester Blankestijn

Address: Coolhaven 375, Rotterdam

Opening hours: Tue-Sun 11am-5pm, Mon closed

Phone: +31 10 217 6773

Internet: museumrotterdam.nl/en

Witte de Withstraat



The ultimate arts and culture street in Rotterdam is known for its artistic, multicultural and lively character.

Referred to as the city's 'Axis of Art', it runs from the Maritime Museum to the Museumpark and is lined with galleries, avant-garde fashion boutiques, restaurants and art cafés.

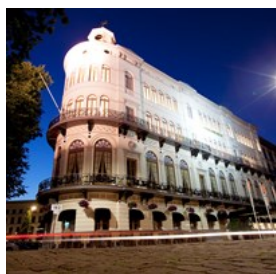
Photo: Iris van den Broek

Address: Witte de Withstraat

Internet:

en.rotterdam.info/locations/the-witte-de-withkwartier-en

Wereldmuseum



The Wereldmuseum takes you on a journey around the world, offering insights into cultures and traditions different from our own. The artefacts are also a reflection of Rotterdam's wanderlust, international connections, colonial past and trading spirit. Besides the primary collection the Wereldmuseum presents changing exhibitions that focus on one continent or theme.

Photo: Marc Heeman/Rotterdam Partners

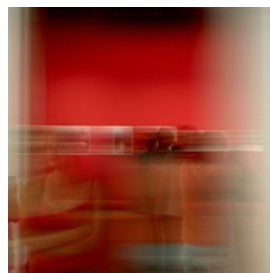
Address: Willemskade 25, Rotterdam

Opening hours: Tue-Fri 10am-5pm, Sat & Sun 11am-5pm, Mon closed

Phone: +31 10 270 7172

Internet: rotterdam.wereldmuseum.nl/en

Nederlands Fotomuseum



With its impressive collection of more than 5.5 million photos, the Nederlands Fotomuseum is the leading national museum of photography in the Netherlands. The collection comprises an important part of the Netherlands' visual heritage.

Photo: julian mora/unsplash

Address: Statendam 1 (Wilhelminapier), Rotterdam

Opening hours: Tue-Sun 11am-5pm, Mon closed

Phone: +31 10 203 0405

Internet: www.nederlandsfotomuseum.nl/en

Email: info@nederlandsfotomuseum.nl

TENT Rotterdam



TENT is an exhibition room and addresses significant and current developments in contemporary art through varied exhibitions and events. TENT is a stepping stone for young artists, an ambassador for Rotterdam's art.

Photo: Wikifrits/public domain/wikimedia(image cropped)

Address: Witte de Withstraat 50, Rotterdam

Phone: +31 10 201 0960

Internet: www.tentrotterdam.nl/en

Email: info@tentrotterdam.nl

Kunstinstituut Melly



Kunstinstituut Melly is one of the most important institutes for contemporary art in the Netherlands and internationally regarded as a pioneer. It's located in a former school building on Witte de Withstraat.

Photo: Iris van den Broek

Address: Witte de Withstraat 50, Rotterdam

Opening hours: Wed-Sun 11am-6pm

Phone: +31 10 411 0144

Internet: www.kunstinstituutmelly.nl/en

More Info: Formerly known as Witte de With Center for Contemporary Art

Nieuwe Instituut



In Het Nieuwe Instituut, the Museum of Architecture, Design and Digital Culture shows temporary exhibitions with a recurring theme of

innovation. In other words: the museum examines the designed world and how it is constantly being changed by new technologies, new ideas and shifting social priorities. The presentation, Surprising Finds from the Collection, can also be viewed. Its exhibits are regularly changed and include extraordinary drawings, photographs, objects and models from the extensive archives of Het Nieuwe Instituut.

Photo: Iris van den Broek

Address: Museumpark 25, Rotterdam

Opening hours: Tue & Wed 10am-5pm, Thu 10am-9pm, Fri-Sun 10am-5pm, Mon closed

Phone: +31 10 440 1200

Internet: nieuweinstituut.nl/en

Sonneveld House



The Sonneveld House stands adjacent to Het Nieuwe Instituut. Built in the early nineteen thirties, it is one of the best-preserved houses in

the Nieuwe Bouwen style, the Dutch branch of the International School of Modernism. As a visitor, you can see for yourself what it was like to live in a hypermodern home in 1933.

Photo: Esther Westerveld/cc by 2.0/Flickr

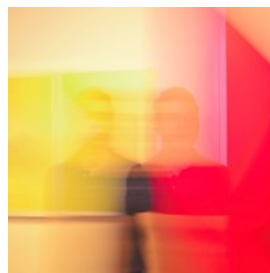
Address: Jongkindstraat 12, Rotterdam

Opening hours: Tue-Sun 10am-5pm, Mon closed

Phone: +31 10 440 1200

Internet: www.huissonneveld.nl

Garage Rotterdam



Garage Rotterdam represents high quality contemporary art. The exhibitions are held around a theme reflecting recent developments in contemporary visual arts. The exhibition centre is located in a renovated Volkswagen garage.

Photo: Nicolas Ladino Silva/unsplash

Address: Goudsewagenstraat 27, Rotterdam

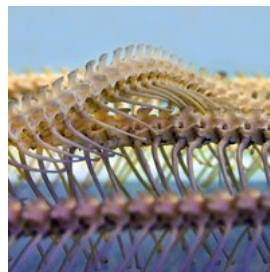
Opening hours: Wed-Sun 12:30pm-5:30pm

Phone: +31 10 737 0875

Internet: www.garagerotterdam.nl/en

Email: info@garagerotterdam.nl

Natural History Museum Rotterdam



Famous for its 'Dead Animal Tales', featuring the Domino Sparrow and the Do-Not-Swallow-Fish, this museum offers exhibits for people of all

ages. Stuffed mammals, mounted birds, skeletons, insects, shells and fossils are permanently on display, and there is a fine curiosity cabinet.

Photo: DenisDoukhan/pixabay

Address: Natuurhistorisch Museum Rotterdam, Westzeedijk 345, Rotterdam

Opening hours: Tue-Sun 11am-5pm, Mon closed

Phone: +31 10 436 4222

Internet: www.hetnatuurhistorisch.nl/en

SHOPPING



Ossip van Duivenbode

Shop till you drop! Whatever your style is and whatever you are looking for, Rotterdam is the place to be. Most shops in the city centre are open seven days a week. From trendy boutiques to megastores, from popular brand stores to the more tranquil, high-end fashion chic, you can find it all in Rotterdam.

Bijenkorf Rotterdam



While London has Harrod's, Rotterdam is blessed with De Bijenkorf, the most luxurious chain of department stores in the country. The great thing about shopping here is that you'll find exclusive brands like Burberry, Michael Kors, Jimmy Choo and Marc by Marc Jacobs all assembled on the same floor. Stroll right on through to the shoes, leather goods, jewellery and cosmetics, and you'll have a complete outfit all ready to go.

Photo: Bijenkorf Rotterdam/Rotterdam Partners

Address: Coolensingel 105, Rotterdam

Phone: +31 20 808 9333

Internet: www.debijenkorf.nl/rotterdam

Fenix Food Factory



This small-scale food hub is located in the Fenixloods, a former warehouse, at the Katendrecht peninsula. Here you can enjoy artisanal food and products from among others the Kaapse Brouwers brewery, Booij Kaasmakers cheese, Jordy's Bakery and Rechtstreef fruit and vegetables. The Kaapse Kitchen serves affordable dishes from different Rotterdam chefs that vary weekly. The terrace on the adjacent quay offers a great view of the Rotterdam skyline.

Photo: Robin Utrecht

Address: Nico Koomanskade 1025, Rotterdam

Phone: +31 10 218 0853

Internet: www.fenixfoodfactory.nl

De Groene Passage



Human, animal and environmentally friendly shopping is the aim of this shopping centre. To keep your energy up, you can have breakfast, lunch or dinner at Spirit where everything is 100% organic and 100% vegetarian.

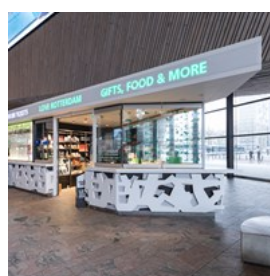
Photo: Manel & Sean/unsplash

Address: Mariniersweg 9, Rotterdam

Phone: +31 10 233 1933

Internet: degroenepassage.nl

Love Rotterdam. Gifts, Food & More.



Looking for a nice, typically Rotterdam gift or souvenir? Walk into 'Love Rotterdam. Gifts, Food & More' in the central hall of Rotterdam

Central Station. Here you'll find mainly Rotterdam products like Rotterdamsche Oude Kaas (Old Cheese), Maasstroompjes (Biscuits), Rotterdam Port from MWAH and locally brewed beer from the Kaapse Brouwers. There is also Rotterdam design available, such as the bags from Susan Bijl. In addition, in the gift shop more traditional souvenirs, from magnets to key rings and postcards are sold.

Photo: Guido Pijper/Rotterdam Partners
Address: Stationsplein 21, Rotterdam
Opening hours: Daily 9:30am-6pm
Phone: +31 10 790 0185
Internet:
en.rotterdam.info/locations/love-rotterdam-gifts-food-more-en

Margreeth Olsthoorn



Those in the know come to Rotterdam from all over to visit this famous fashion shop. Her style is avant-garde, raw and slightly punk, with sober, classical elements. She sells brands like Maison Martin Margiela, Henrik Vibskov, Acne and Avelon, combined with new labels that she's enthusiastic about, like Rotterdam's own jewellery brand The Boy Scouts.

Photo: Shelley Trustfull/Rotterdam Partners
Address: Wilhelminakade 52, Rotterdam
Phone: +31 10 282 7542
Internet: margreetholsthoorn.com
Email: info@margreetholsthoorn.nl

Susan Bijl



Look for lifestyle brand Susan Bijl's flagship store in the heart of Rotterdam. Susan Bijl is known nationally and internationally for the

colourful nylon bag The New Shopping Bag.

Photo: Vera Bos
Address: Nieuwe Binnenweg 94, Rotterdam
Opening hours: Mon noon-6pm, Tue-Fri 10am-6pm, Sat 10am-5pm, Sun closed
Phone: +31 6 43400911
Internet: www.susanbijl.nl/pages/stores

De Kaashoeve



De Kaashoeve is a traditional cheese shop that also carries delights like wine and exotic fruits and nuts. If you're a fan of the stronger cheeses, don't miss your chance to try a piece of the legendary 'Old Rotterdam'.

Photo: De Kaashoeve/Rotterdam Partners
Address: Oude Binnenweg 129b, Rotterdam
Phone: +31 10 413 8644

Keet Store



A concept store for startup webshops, businesses and labels. The collection of clothes, jewellery, poetry, graphic prints, interior accessories and tasty treats from young entrepreneurs and local brands changes frequently.

Photo: Keet Store/Rotterdam Partners
Address: Oppert 2a, Rotterdam
Opening hours: Mon-Thu 10am-5:30pm, Fri & Sat 10am-6pm, Sun 11am-5pm
Phone: +31 10 210 5433
Internet: www.keetrotterdam.nl
Email: info@keetrotterdam.nl

Funkie House



With a collection featuring over sixty clothing brands, plus an equally varied clientele, Funkie House can justifiably call itself a home to anyone who's into street fashion.

Photo: Funkie House/Rotterdam Partners
Address: Korte Hoogstraat 15a, Rotterdam
Phone: +31 10 433 3507
Internet: www.funkiehouse.nl

Wendela van Dijk



From a fancy party dress to the ultimate suit coat: Wendela van Dijk has it all. She sells a mix of celebrated designers and local heroes.

Photo: Jan Bijl
Address: Van Oldenbarneveltstraat 105, Rotterdam
Opening hours: Mon 1pm-6pm, Tue-Sat 10am-6pm, Sun 1pm-5pm
Phone: +31 10 411 2644
Internet: shop.wendelavandijk.com

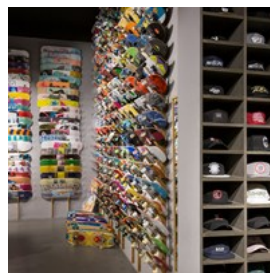
Joline Jolink



Joline Jolink makes stylish clothing in natural materials, both beautiful and practical. Fashion for women who always want to look their best, whether they're at work, cycling through the city or at a party.

Photo: Shelley Trustfull
Address: Nieuwe Binnenweg 82, Rotterdam
Opening hours: Wed-Fri 11am-6pm, Sat 11am-5pm
Internet: www.jolinejolink.com

Skatestore Rotterdam



A skateshop with the largest assortment in the Benelux for skateboarding and lifestyle: decks, wheels, bearings, trucks and complete skateboards.

Photo: Shelley Trustfull
Address: Westblaak 28, Rotterdam
Opening hours: Sun & Mon noon-6pm, Tue-Thu 10am-6pm, Fri 10am-9pm, Sat 10am-6pm
Phone: +31 10 302 1300
Internet: www.skatestore.com/skatestore-rotterdam
Email: info@skatestore.nl

CULINARY ROTTERDAM



Rotterdam Partners

Whether you're in the mood for a quick but delicious hamburger or curious about the latest molecular cooking techniques, feel like dining at a spectacular location, or simply want to grab a beer from a local brewery, it's all easy to find in Rotterdam. From trendy coffee bars and organic lunchrooms to fancy cocktail bars, from stylish restaurants with Michelin stars to surprising eateries and adventurous fast food concepts, Rotterdam's culinary options are extensive, and interesting newcomers join the list every week.

Bazar



If you fancy a feel of the Orient then head to this busy restaurant, which really deserves its name and offers delicious Mediterranean and Oriental food. Bazar is also a hotel.

Photo: Iris van den Broek
Address: Witte de Withstraat 16, Rotterdam
Phone: +31 10 206 5151
Internet: www.hotelbazar.nl/en/restaurant

Fitzgerald



You won't find standard dishes on Fitzgerald's compact, seasonal menu, that changes monthly. Get ready for sophisticated, international flavours and ingredients. These are accompanied by a wide choice of known and unknown wines. Another surprise: the beautiful secret garden of this restaurant and finger food bar in the historical Oude Haven.

Photo: Rotterdam Partners
Address: Gelderseplein 49, Rotterdam
Phone: +31 10 268 7010
Internet: www.restaurantfitzgerald.com/english
Email: info@restaurantfitzgerald.com

HMB Restaurant



HMB Restaurant occupies the ground floor of one of Rotterdam's most imposing buildings, De Rotterdam by architect Rem Koolhaas. Through the huge glass panes or on the outdoor patio, you can enjoy spectacular views of the Rotterdam skyline and the Erasmus Bridge while you dine.

The menu features 25 refined side dishes and over 100 wines.

Photo: Rotterdam Partners
Address: Holland Amerika Kade 104, Rotterdam
Phone: +31 10 760 0620
Internet: hmb-restaurant.nl/en/home
Email: info@hmb-restaurant.nl

De Matroos & het Meisje



The interior of the restaurant is audacious yet tasteful with Delfts Blue print on the walls and the famous Dutch checkered tea towel used as napkins. This boldness and style is also reflected in the dishes. The menu changes regularly and is inspired by the market and the season.

Photo: Rotterdam Partners
Address: Delistraat 52, Rotterdam
Opening hours: Dinner: daily 6pm-midnight. Lunch: Sat & Sun noon-4pm
Phone: +31 10 215 2764
Internet: www.dematroosenhetmeisje.nl/en

FG – François Geurds Restaurant



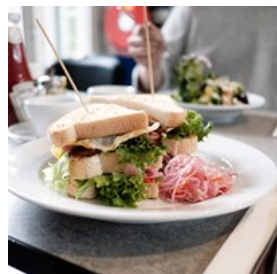
Once the assistant chef of Heston Blumenthal at The Fat Duck, nowadays one of the best chefs in Rotterdam: Francois Geurds (FG). His fine dining FG Restaurant offers you quite an experience. It's all about molecular cooking here, with the power of simple and pure biological ingredients. Expect unexpected combinations, often created at the table itself.

Photo: Rotterdam Partners
Address: Katshoek 37b, Rotterdam
Phone: +31 10 425 0520

Internet: www.fgrestaurant.nl

Email: info@fgrestaurant.nl

By Jarmusch (East)



At By Jarmusch, they serve breakfast throughout the day. You can also enjoy other dishes at this American Breakfast Diner.

Photo: Titia Hahne/Rotterdam Partners

Address: Het Industriegebouw, Goudsesingel 64, Rotterdam

Opening hours: Daily 8am-4pm

Phone: +31 10 307 4809

Internet: www.byjarmusch.nl

More Info: By Jarmusch has a second location — West — at Nieuwe Binnenweg 575.

Parqiet



Parqiet is a no-nonsense café in the Euromast park. They serve affordable breakfasts, lunches, drinks and dinners.

Photo: Iris van den Broek

Address: Baden Powelllaan 20, Rotterdam

Opening hours: Mon-Fri 9am-5pm, Sat & Sun 9am-6pm

Phone: +31 6 51001606

Internet: www.parqiet.com

Email: info@parqiet.nl

Alfredo's Taqueria



Alfredo's Taqueria is an authentic Mexican restaurant that will satisfy all your taco, tortilla and cocktail cravings. It has a heated

terrace with tropical palm trees and picnic benches in the courtyard of Het Industriegebouw.

Photo: Titia Hahne/Rotterdam Partners

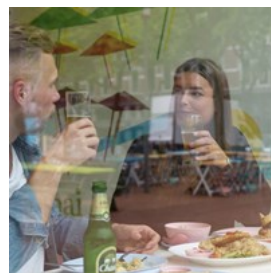
Address: Het Industriegebouw, Goudsesingel 204, Rotterdam

Opening hours: Wed-Sat 5pm-11pm, Sun-Tue closed

Phone: +31 10 307 4680

Internet: alfredostaqueria.nl

Deli Bird Thai Kitchen



Deli Bird owner Wiland Toelen has succeeded in bringing a true piece of Thailand to Rotterdam. The interior is minimalist, while the flavours are anything but.

Photo: Lorenzo van Galen/Rotterdam Partners

Address: Delistraat 46c, Rotterdam

Opening hours: Tue-Sun 5pm-9:30pm, Mon closed

Phone: +31 10 485 5288

Internet: www.instagram.com/delibirdthaikitchentakeaway

Gastrobar Elvy by nhow



Discover Gastrobar Elvy on the seventh floor of the iconic De Rotterdam building for the best beers, quality wines and surprising cocktails.

Photo: Iris van den Broek

Address: De Rotterdam, nhow Hotel, Wilhelminakade 137, Rotterdam

Phone: +31 10 206 7600

Internet: www.nhow-hotels.com/en/nhow-rotterdam/eat-drink

Restaurant Héroïne



At Héroïne, you can enjoy delicious dishes, tasty wines and service of a high level, without fuss. Choose a 4, 5 or 7-course dinner. The dishes are simple but respect special techniques and taste combinations. The chef gets inspiration from a

variety of cuisines.

Photo: Titia Hahne/Rotterdam Partners

Address: Het Industriegebouw, Kipstraat 12, Rotterdam

Phone: +31 6 81963763

Internet: restaurantheroine.nl

Foodhallen Rotterdam



Foodhallen Rotterdam is located in the monumental, robust and characteristic Pakhuismeesteren warehouse. This spacious indoor food market has fifteen local stands with a diverse range. It is a social concept where everyone eats together, but can also individually choose a meal at one of the stands.

Photo: Iris van den Broek

Address: Wilhelminakade 52-58, Rotterdam

Internet: foodhallen.nl/venues/rotterdam

More Info: The Room Mate Bruno Hotel is also located in Pakhuismeesteren.

BARS & NIGHTLIFE



Iris van den Broek

Like so much else in Rotterdam — the architecture, the people, their cultures and customs — the city's nightlife is filled with contrasts. Glamorous cocktail bars and classic pubs, hip and happening dance clubs and intimate concert venues. Depending on what you like to do when you hit the town and what mood

you're in, Rotterdam can offer you wildly different nights out. It's all up to you!

Rotown / De Vegan Snackbar



Rotown is a popular place to listen to live bands from Rotterdam and abroad, but also for dancing on various DJ tunes. Housed in a former Chinese restaurant, Rotown has been an institution in the city's musical history for over a quarter-century. It hosts primarily alternative bands and artists, from pop to dance.

Photo: Miika Laaksonen/unsplash

Address: Nieuwe Binnenweg 19, Rotterdam

Phone: +31 10 436 2669

Internet: www.rotown.nl

Email: info@rotown.nl

Maassilo



Maassilo is located in a former grain silo at Massshaven, near the Maas River and one of the most spectacular club venues in the Netherlands. All kinds of dance and music programmes regularly take place here, presented by various party organisers. The clubs patronage consists of different cultures and sub-cultures who represent the core of the trendy international club scene.

Photo: Iris van den Broek

Address: Creative Factory, Maashaven Zuidzijde 1-2, Rotterdam

Phone: <https://www.facebook.com/Maassilo/>

Internet: www.maassilo.com

Annabel



Enticing, raw and urban are the words that describe this café and pop stage a stone's throw from Rotterdam Central Station. Annabel is one point of the golden triangle of Schiestraat (the other two are Biergarten and BAR). When it's sunny, you can enjoy a seat outside.

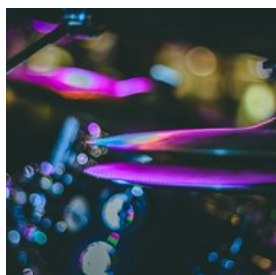
Photo: Annabel/Rotterdam Partners

Address: Schiestraat 20, Rotterdam

Internet: www.annabel.nu

Email: <https://www.facebook.com/annabelnl>

BIRD



BIRD jazz club not only wants to revive the jazz of the past, but also wants to update it for the 21st century. Jazz and related genres like soul, latin & funk, hip hop, afrobeat and electronica form the core of the music programming, complemented by other jazz-related art disciplines such as performance poetry, film and visual arts.

Photo: israel palacio/unsplash

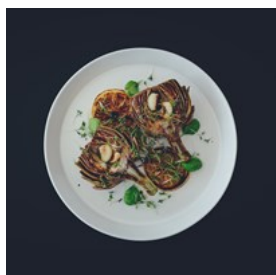
Address: Raampoortstraat 26, Rotterdam

Phone: +31 10 737 1154

Internet: bird-rotterdam.nl

Email: <https://www.facebook.com/BIRDrotterdam>

Ballroom



Ballroom's hallmark is its selection of over 52 different gins from 14 countries, enough to impress even the most jaded gin connoisseur. To go with your gin, order some of their famous meatballs. Ballroom has two patios, one on the

street side and one in the garden, where you can sit outdoors along the back of the bar.

Photo: Siniz Kim/unsplash

Address: Witte de Withstraat 88b, Rotterdam

Opening hours: Thu 4pm-1am, Fri & Sat 4pm-2am, Sun 4pm-1am, Mon-Wed closed

Internet: ballroomrotterdam.nl

Email: info@mamarazzi.bar

Supermercado



At the corner of the Witte de Withstraat, you can find a bar and restaurant Supermercado. This cosy place reminds of a bubbling South-American cantina. Young families, professionals and groups of friends — everyone is welcome at Supermercado, for a good coffee, late lunch or early dinner. You can eat your heart out with one of the many meat, fish or vegetarian dishes that are prepared in a truly Latin American way on the charcoal grill. Also, you will of course find Mexican tacos and tortilla chips on the menu. Order a cerveza or tequila as a side and your evening is complete.

Photo: Iris van den Broek

Address: Schiedamsevest 91, Rotterdam

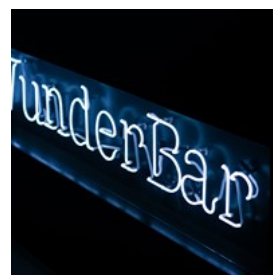
Opening hours: Mon-Wed 4pm-midnight, Thu-Sat noon-2am, Sun noon-midnight

Phone: +31 10 404 8070

Internet: supermercadorotterdam.nl

Email: info@supermercadorotterdam.nl

Wunderbar



At Wunderbar, you're instantly transported to the relaxed atmosphere of a vacation in Germany. Sip a beer outside on the patio, or play a game of

table football inside. Wunderbar serves the drinks you won't find in many other cafes, like Fritz-Kola (sweetened with Stevia) and Wostock (an East Berlin herbal cola drink). The unusual craft beers served here include Raging Bitch and Punk I.P.A.

Photo: Felicia Buitenwerf/unsplash
Address: WORM, Boomgaardsstraat 71, Rotterdam
Opening hours: Mon-Thu 3pm-1am, Fri 3pm-2am, Sat 2pm-2am, Sun 2pm-1am
Phone: +31 10 476 7832
Internet: worm.org/spaces/wunderbar

Kaapse Maria



Kaapse Maria is the little sister of the Kaapse Brouwers that we know from the Fenix Food Factory. At Kaapse Maria you'll discover surprising and creative dishes that are ideal for combining with the craft beer from the Kaapse Brouwers. With 24 beers on tap, there is also plenty of choice.

Photo: Cody Chan/unsplash.com
Address: Mauritsweg 52, Rotterdam
Opening hours: Mon 4pm-10pm, Thu 4pm-1am, Fri 4pm-2am, Sat 2pm-2am, Sun 2pm-10pm, Tue & Wed closed
Phone: +31 10 842 3978
Internet: www.kaapsemaria.nl

De Gele Kanarie



The beer and food paradise De Gele Kanarie is on the corner of the Goudsesingel and the Mariniersweg. The interior of the bar may remind you of the Bokaal and Weena cafés, also owned by Ron de Jong and Dave Heijnen. De Gele Kanarie serves lunch, dinner and various

types of beer, wine and mixed drinks. They also have their own brewed beer on tap: DGK or De Gele Kanarie (Yellow Canary).

Photo: Iris van den Broek/Rotterdam Partners
Address: Goudsesingel 284, Rotterdam
Opening hours: Mon-Fri 3pm-1am, Sat & Sun noon-1am
Phone: +31 10 333 5444
Internet: www.degelekanarie.com
Email: info@degelekanarie.com

TOURIST INFORMATION & TRANSPORT



Ossip van Duivenbode

Airport



Rotterdam The Hague Airport (RTM) offers effortless access for travellers. Whether arriving by car, public transport, or even on two wheels, the airport caters to all. Secure parking spaces and designated Kiss & Ride zones streamline the experience for motorists.

For public transport users, a swift journey awaits with metro line E from Rotterdam or The Hague Central Station, complemented by convenient bus services. Those preferring a taxi will find reliable services at the ready, ensuring a smooth start or end to your journey.

Schiphol Airport is only 25 minutes away from Rotterdam Central Station by NS International trains.

Photo: Eric Fecken
Address: Rotterdam Airportplein 60, Rotterdam
Phone: +31 10 446 3444
Internet: www.rotterdamthehagueairport.nl/en

Public Transport



Rotterdam has an excellent public transport system, mostly provided by the RET. Train, metro, tram, bus and waterbus can take you everywhere.

Planning your route is easy via www.9292.nl.

To travel on public transport, you need a public transport chip card sold at any Metro Station.

Photo: Claire Droppert
Internet: www.9292.nl

Rotterdam Tourist Information Website & Offices



Are you interested in visiting Rotterdam and looking for some more inspiration? Visit the official Rotterdam Tourist Information website for a

complete view of the city's highlights and activities.

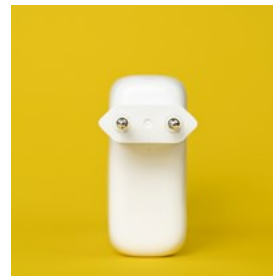
The staff at the Rotterdam Tourist Information Offices at Coolsingel and Central Station will help you find your way in Rotterdam once you have arrived. Their tips will turn your visit into an even better experience.

Rotterdam Tourist Information Coolsingel is

located at Coolsingel 114 (in the garden of the Schielandshuis, entrance Coolsingel).

Photo: Iris van den Broek
Address: VVV Rotterdam, Coolsingel 114, Rotterdam
Phone: +31 10 790 0185
Internet: www.rotterdam.info
Email: info@rotterdamtouristinformation.nl

Electricity



The Netherlands uses the Type F electrical plug with two round pins, same as in many countries in Continental Europe. The standard

voltage is 230 volts, but some hotels have special plugs for 110 or 120-volt shavers.

Photo: Mika Baumeister/unsplash

Telephone



Country code: +31 Area code: (0)10

Photo: Nik/unsplash

Population

Urban: 1.3 (2023)
Metro: 2.4 million (2023)

Currency
Euro

Opening hours

Generally, shops in the city centre are open 7 days a week, from around 10 am until 7 pm. On Sunday, shops open their doors at noon. On Friday, shops are open until 9 pm.

Most attractions can be visited 7 days a week as well. The Markthal is open until 8 pm except for Friday (9 pm) and Sunday (6 pm). Rotterdam museums welcome their visitors from Tuesday until Sunday (thus closed on Monday).

National holidays include Christmas, New Years Day, Easter, King's Day (27th of April) and Pentecost.

Internet

rotterdam.info
www.rotterdam.nl

Emergency numbers

112

Tourist information

Rotterdam Tourist Information
Coolingsingel 114, Rotterdam

Rotterdam Tourist Information
Stationsplein 21, Rotterdam
Open daily 9:30am–6pm

+31 10 790 01 85
info@rotterdam.info

