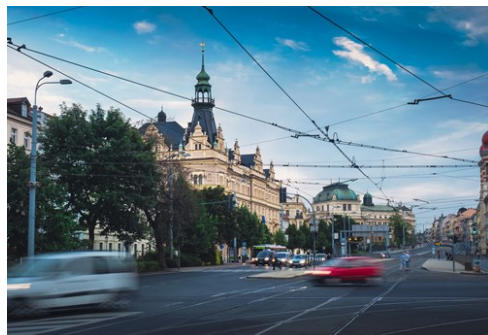


Pilsen

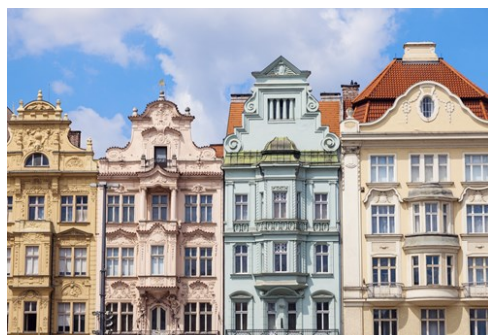
Photo: kirill_makarov/Shutterstock.com



Petr jezek/Shutterstock.com



Anilah/Shutterstock.com



Henryk Sadura/Shutterstock.com

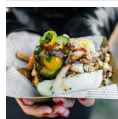
Mention of Pilsen most often evokes beer and the famous legend that gave name to all its types more than 170 years ago. However, the city has more to offer, as the historical city centre features plenty of gems reminding of its rich history: the Gothic St Bartholomew's Cathedral with the highest church tower in the Czech Republic, Renaissance City Hall, the labyrinth of corridors of the Pilsen Historical Underground, Franciscan Monastery, and the unique Great Synagogue, which is the fourth largest synagogue in the whole wide world.

Events



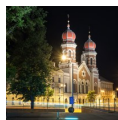
Smetana Days

This international festival of classical music ranks among the most signific...



DEPO Street Food Market

This festival, organised by DEPO2015, celebrates dishes from all over the wo...



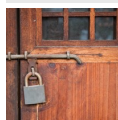
Festival of Light

While the atmospheric streets of Pilsen invite for a romantic walk in any se...



Liberation Festival

Pilsen is the only large city in the Czech Republic that annually remembers ...



Pilsen Yards

Although Pilsen features a historical city centre that allows everyone to ex...

Top 5



Pilsner Urquell Brewery

Beer has been produced in this brewery since 1842, and it made the city of P...



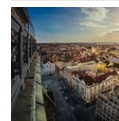
Microbreweries

The Czech Republic, and especially Pilsen, is known for the beer from Pilsne...



St Bartholomew's Cathedral

This Gothic cathedral on the Republic Square creates a dominant feature not ...



Loos Interiors

These unique architectonic gems were created by the world-famous architect A...



Great Synagogue

This synagogue is the largest in synagogue in the Czech Republic, the second...

THE CITY



kirill_makarov/Shutterstock.com

The city's rich history has its beginning in 1295, when the first settlement was established as a royal town, and the position – on a crossover of both business roads and rivers – was quite advantageous, bringing considerable wealth to the city and its population. Business and art prospered significantly in the city of Pilsen, and at the time of the industrial revolution in the 19th century, the well-known industrial giants were founded: Skoda and Pilsner Urquell Brewery. The industrial character of the city has been kept up to the present day, and the high level of cultural and social life in the city was also reflected in a characteristic constructional development that can still be seen in the central quarters, and especially on the Republic Square and in its surroundings.

The city centre is surrounded by parks and alleys, lined with trees and flowers, and you can here enjoy many cafes and restaurants while watching street performances and open-air productions – all the sights are within walking distance, and there are various spots to catch a break (and breath again). The city's lively atmosphere, making for the title of 'European Capital of Culture' in 2015, roots in events and festivals happening all year long, and unique exhibitions, interesting theatres and dance performances attract visitors from all over the

world, indulging in the city centre's happenings, and relaxing in romantic park areas nearby.

EVENTS



BLUR LIFE 1975/Shutterstock.com

The year 2015 was exceptional for Pilsen, as it – back then – carried the title 'European Capital of Culture', and inspired prestigious foreign media to write about it on their pages. Nevertheless, the city kept this commitment to a lively and welcoming atmosphere, hosting annual events as well as periodic feasts, so if you plan to visit the Czech Republic in the foreseeable future, do not miss Pilsen and its unforgettable events.

Smetana Days



This international festival of classical music ranks among the most significant cultural events in Pilsen, and organised by the Pilsen

Philharmonic Orchestra, it invites foreign and Czech stars to perform on stage here alike. While the programme changes annually, you can definitely look forward to great performances and unique experiences.

Photo: Stokkete/Shutterstock.com

Address: Pilsen

Opening hours: End of March

Phone: +420 60 225 5756

Internet: www.smetanovskedny.cz/en

Email: info@plzenskafilharmonie.cz

DEPO Street Food Market



This festival, organised by DEPO2015, celebrates dishes from all over the world, and you will soon notice that street food hides much more than American burgers and Hungarian langos. Stay tuned about the dates, as the feast normally happens twice or thrice a year, and you will experience flavours and taste from all around the globe that you will probably never (or not before long) meet again.

Photo: [Alexandr Vorobev/Shutterstock.com](#)

Phone: +420 70 201 9508

Internet: www.depo2015.cz/streetfood-market-ag58/streetfood-market-a935

Email: recepce@depo2015.cz

Festival of Light



While the atmospheric streets of Pilsen invite for a romantic walk in any season of the year, this festival enriches the city's natural vibe only once a year, and always in different formations. Keep up to date and experience, how buildings are highlighted by various light installation and when alleys allow performers to show off their skills.

Photo: [Petr jezek/Shutterstock.com](#)

Opening hours: Mid March

Internet: www.pilsen.eu

Liberation Festival



Pilsen is the only large city in the Czech Republic that annually remembers the end of the WW II, and the liberation of the city by the American Army in May, 1945. The reminding feast features a rich cultural programme, and many military-historical events that will teach you about history, and also about the days passed since.

Photo: [flynosfly/Shutterstock.com](#)

Address: Pilsen

Opening hours: Beginning of May

Phone: +420 72 460 2893

Internet: www.liberationfestival.com

Email: sporkova@plzen2015.cz

Pilsen Yards



Although Pilsen features a historical city centre that allows everyone to explore the area by foot, and also independently, a large number of mysterious corners, yards and gardens cannot be visited throughout the year. This one-day festival, however, brings the hidden areas closer, as it invites you to visit at least some of them, and to experience their interesting stories.

Photo: [Singhanart/Shutterstock.com](#)

Opening hours: Mid May

Internet: www.pilsen.eu

Fresh Festival



This festival is the largest gourmet feast in the area of the Western Bohemia, as it attracts thousands of people every year by offering specialities from

all over the world. Experience the art of cooking and baking live, as you get close to great chefs from all around the globe like nowhere else, and try out flavours that you never met before.

Photo: Pressmaster/Shutterstock.com

Opening hours: Mid May

Internet: www.freshfestival.cz

Email: petr@freshfestival.cz

Metal Fest



This festival is a metal fan's paradise, as it is more than dedicated to get best bands and performances on stage that let heavy fans' hearts

beast faster. As one of the first summer music festivals, summer officially starts here in the Lochotin Amphitheatre, and you should definitely join when being around, and into this music.

Photo: txking/Shutterstock.com

Address: Pilsen

Opening hours: Beginning of June

Internet: www.metalfestopenair.cz/en

International Folklore Festival



CIOFF provides a stage for both czech and international folklore artists from all over the world, playing musical instruments and dancing

in the city centre for entertaining the visitors, and also themselves. Head here for convince yourself that folklore is still alive, and that it spread great mood and a wonderful atmosphere.

Photo: Monkey Business Images/Shutterstock.com

Address: Pilsen

Opening hours: Beginning of June

Phone: +420 72 397 9527

Internet: www.mffplzen.eu/english

Email: info@mffplzen.eu

Historical Weekend



Travel back in time, into the period of knights' fights, by experiencing theatre and music performances, traditional fairs with jugglers,

magicians and handcraft shows, and an evening parade of ghosts. While learning more, and fundamentally, about the days back then, you will also experience a lot of fun.

Photo: New Punisher/shutterstock.com

Address: Pilsen

Opening hours: Beginning of June

Internet: www.pilsen.eu

Night of Churches



For one night each year, the gates of churches and various praying areas are opened in the evening time, and you can then visit places that are not

accessible during the year. While you can expect great architecture and interesting insights, a rich cultural programme will also entertain you that night.

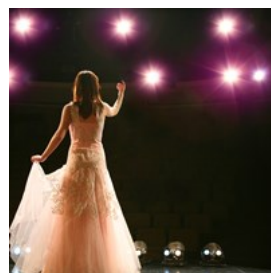
Photo: Shevchenko Andrey/shutterstock.com

Address: Pilsen

Opening hours: End of May / Beginning of June

Internet: www.pilsen.eu

Night of Opera



Hosting a spectacular opera event under the blue sky, the Lochotin Amphitheatre transform its breathtaking atmosphere into an even

more vibrant ambience. Do not miss out this beautiful opera gala performance, when being in Pilsen, as this is indeed a once in a lifetime experience.

Photo: Tracy Whiteside/Shutterstock.com

Address: Pilsen

Opening hours: Mid June

Internet: www.pilsen.eu

Theatre Summer under Pilsen Sky



This summer festival in the historical city centre creates its stage all on its own, as the performances will spread their atmosphere even better

when performed in a breathtaking scenery. Stay tuned about whether its happening during your stay, and you should then not miss it out.

Photo: Kozlik/Shutterstock.com

Opening hours: July

Internet: www.pilsen.eu

Vivid Street Festival



This open-air festival in the heart of the city boasts all genres that you can think of, and many activities and events for people of all ages. With

theatre performances in July, and street concerts in August, this feast will take to you wild experiences and days (and tons) of fun, that get closed by the Soup Festival on the first Sunday in September before starting again next year.

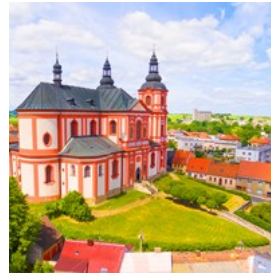
Photo: Monkey Business Images/Shutterstock.com

Address: Pilsen

Opening hours: July-August

Internet: www.pilsen.eu

Summer Baroque Festival



The successful festival 'Nine Weeks of Baroque' in 2015 brought many cultural events to the Baroque sights in the Pilsen region, and the city

now continues with a regular feast. Check out whether it is happening during your stay, and you will experience these sights in their most beautiful state.

Photo: Kletr/Shutterstock.com

Address: Pilsen

Opening hours: June-August

Internet: www.pilsen.eu

International Festival Theatre



Every September, Pilsen is invaded by visitors that do not only aspire to see the city but also join this wonderful festival, as its programme features a

selection of most significant plays written and played by both domestic and foreign productions. Try to take this happening into account, when planning your stay, and you will experience the city in an even better way.

Photo: aerogondo2/Shutterstock.com

Address: Pilsen

Opening hours: Mid September

Internet: www.pilsen.eu

Sun in Glass



This traditional festival happens once a year, and it offers small breweries from both Czech and foreign origin to display their beers, and show off

their skills. While tasting the beers may be

focused quite most, you will also learn more about the process of brewing, and the history of beers.

Photo: Kjetil Kolbjornsrud/Shutterstock.com
Address: Pilsen
Opening hours: Mid September
Internet: www.pilsen.eu

Pilsen Busking Fest



This fest is an original festival of street art, and it offers concerts, dance performances, street theatre and other artistic experiences by performers from all over the world. While all the performances are free of charge, the only fee you need to pay is a donation to those whose performance you have enjoyed, and you can also visit the new project of creative zones for young artists.

Photo: Wallenrock/Shutterstock.com
Address: Pilsen
Opening hours: End of September / Beginning of October
Phone: + 420 72 336 5821
Internet: www.buskingfest.cz
Email: honza.mikyska@conexis.cz

Autumn Wine Festival



Although Pilsen is a beer town, there is not need to travel to South Europe for enjoying a wine tasting, as you can taste wines from twenty Czech and Moravian wine producers in the historical centre of Pilsen as well. As a nice music programme is also planned for the event, you will definitely spend a nice time with friends, and locals, while savouring a glass (or two).

Photo: Syda Productions/Shutterstock.com
Address: Pilsen
Opening hours: End of September / Beginning of October

Pilsner Fest



Pilsner Fest is a birthday celebration of the world-known brewery Pilsner Urquell, and its unimaginable selection of beer is always completed by great musical performances. While you cannot leave the city without trying its beer, you should also not miss its party when then being in town.

Photo: fototip/Shutterstock.com
Address: Pilsen
Opening hours: Beginning of October
Internet: www.pilsen.eu

Treffpunkt



This festival of the Czech-Bavarian cultural cooperation offers events and activities across various genres, and a wide range of gastronomical experiences that naturally include beer but also other German specialities. Dress up in German costumes, and enjoy the rich culture.

Photo: Kzenon/Shutterstock.com
Address: Pilsen
Opening hours: Mid October
Internet: www.treffpunkt.cz

Celebration of the Republic Foundation



This celebration of the foundation of the independent Czechoslovakian state is a opportunity to visit many sights in the city

either free of charge or for advantageous entrance fees, and the firework in the evening is an all time favourite. While a street food festival will introduce tastes from the period of the First Republic, performances take place quite all over the centre, and for people of all ages.

Photo: Peteri/Shutterstock.com

Address: Pilsen

Opening hours: End of October

Internet: www.pilsen.eu

Christmas Market



Pilsen Christmas Market boasts a romantic atmosphere filled with the smell of mulled wine, and freshly baked sweets and other treats, and as

completed by an interesting cultural programme, it is the place to be during Christmas time.

During the period of advent, you can join guided tours of the historical city centre, before heading back to the market for warming up with punch.

Photo: Kate Kony/Shutterstock.com

Address: Pilsen

Opening hours: December

Internet: www.pilsen.eu

DO & SEE



Anilah/Shutterstock.com

Pilsen city shape is dominated by impressive buildings and even more breathtaking historical monuments that cannot missed out when admiring the 'skyline', but you should also head there for having a proper look around. Take your time and stroll around in the city centre, as all the sights (and sites) are within walking distance, and you will probably find some hidden gem that you can then advise your friends.

Pilsner Urquell Brewery



Beer has been produced in this brewery since 1842, and it made the city of Pilsen world-widely known while establishing the name 'Pils' or

'Pislener' for every bottom fermented lager. While the guided tour of the Pilsner Urquell Brewery will take you through an interactive exposition, with historical as well as modern operations of the recent production line, it will end in the brewery's cellars for tasting non-filtered Pilsner Urquell beer. Do also stop by at the museum, at the original brewery house from the beginning of the 15th century, for learning more about beer brewing and its culture by interactive expositions and interesting exhibits.

Photo: DenisProduction.com/Shutterstock.com

Address: U Prazdroje 64/7, Pilsen

Opening hours: Apr-Jun daily 8am-6pm. Jul-Aug daily 8am-7pm. Sep 8am-6pm

Phone: +420 37 706 2888

Internet: www.prazdrojvisit.cz/en

Email: visits@asahibeer.cz

More Info: The gift shop is open daily 10am-7pm.

Microbreweries



The Czech Republic, and especially Pilsen, is known for the beer from Pilsner Urquell, but the city and the surrounding region boast several

other, rather smaller breweries that are well worth a visit. Have a look, or tasting, around and take home some of your favourites:

Purkmistr

Selská náves 21/2, Pilsen

+420 37 799 4311

www.purkmistr.cz/en/brewery

U Pašáka

Poděbradova 12, Pilsen

+420 37 794 6012

pivopasak@seznam.cz

www.pivopasak.cz

Opening hours: Mon-Fri 10am-11pm. Sat 11am-11pm

Beer Factory

Dominikánská 8, Pilsen

+420 37 942 2526

www.beerfactoryplzen.cz

Opening hours: Mon-Thu 11am-12am. Fri-Sat 11am-1am. Sun 11am-11pm

Photo: VDB Photos/Shutterstock.com

Address: Pilsen

St Bartholomew's Cathedral



This Gothic cathedral on the Republic Square creates a dominant feature not only for the square and the historical centre but also for the

city's whole silhouette. Its majestic interior is definitely worth a visit, as on the main altar, the world-wide known Pilsen Madonna - the most famous work of the Czech Gothic style- can be admired, while on the rear side outside the cathedral, one of the small metal-forged angels will let your wishes, with a touch, become true. You can also visit the tower, the highest one in the Czech Republic, that features wonderful views over the surrounding region.

Photo: Henryk Sadura/Shutterstock.com

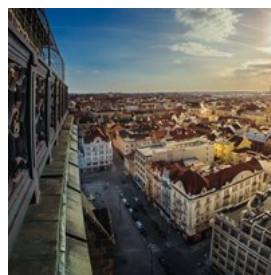
Address: Náměstí Republiky, Pilsen

Opening hours: Cathedral: Apr-Sep Wed-Sat 10am-4pm.

Oct-Dec Wed-Fri 10am-4pm

More Info: Visits to the spire are possible throughout the year, and daily 10am-6pm.

Loos Interiors



These unique architectonic gems were created by the world-famous architect Adolf Loos in the early 20th century, and while

they include eight apartment interiors that were occupied by rich investors of the Jewish community, four of them are open for the public: the Apartment of the Kraus Family (10 Bendova Street), the Apartment of Doctor Vogl (12 Klatovska Street), the Brummel House (58 Husova Street) and the Semler House (110 Klatovska Street, under construction until 2021). Apart from experiencing the extraordinary first-republic design, a guided tour provides an

interesting insight into the Jewish community's life and fate, as each of the interiors hides its own story of fate, and these stories simultaneously illustrate historic events of WW II, and consequently of the Communist regime as well.

Photo: Petr jezek/Shutterstock.com

Address: Pilsen

Opening hours: Apr-Oct Thu, Sat-Sun. Nov-Mar Thu, Sat

Phone: +420 37 803 7966

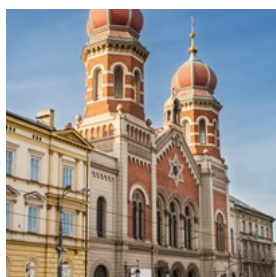
Tickets: Guided tour 1 - CZK 180 full / CZK 120 reduced, guided tour 2 - CZK 240 full / CZK 150 reduced, guided tour 3 - CZK 140 full / CZK 90 reduced

Internet: www.adolfloospilsen.cz/en

Email: info@adolfloospilsen.cz

More Info: Call in advance for booking a tour.

Great Synagogue



This synagogue is the largest in synagogue in the Czech Republic, the second largest in Europe, and the fourth largest in the whole wide world,

and during your visit in this city, you should not miss it out. While providing evidence of the city's Jewish community before the World War II, and its complete destruction in the Holocaust, it also hosts - after its reconstruction, and thanks to amazing acoustic properties - regular concerts.

Photo: Santi Rodriguez/Shutterstock.com

Address: Sady Pětatřicátníků 35/11, Pilsen

Opening hours: Apr-Oct Sun-Fri 10am-6pm

Phone: +420 37 723 5749

DEPO2015



The former industrial area of the public transport depot has recently been changed into a creative incubator for beginning artists and

start-up projects. While offering an interesting industrial interior that suits many types of cultural events and interesting exhibitions, this is a spot where you can breath in creativity.

Photo: Jan Polák/Wikimedia.org(image cropped)

Address: Presslova 14, Pilsen

Opening hours: Exhibitions: Mon-Fri 1pm-6pm. Sat-Sun

10am-6pm. Cafe: Mon-Fri 11am-7pm. Sat-Sun 10am-6pm

Phone: +420 70 201 9508

Internet: www.depo2015.cz

Email: recepce@plzen2015.cz

More Info: The reception is open Mon-Fri 8am-6pm and Sat-Sun 10am-6pm

Historic Underground of Pilsen



This spacious maze of the Pilsen Historical Underground corridors is one of the biggest undergrounds in the Czech Republic,

originated in the 14th century already. While a guided tour will get you familiar with the everyday life under a medieval city, you will also learn about the origin of the Pilsen Historical Underground and its various purposes in general. Do also drop in at the Brewery museum close by, as the tour's visitors of 18 years+ will also get some beer in the end.

Photo: SvedOliver/Shutterstock.com

Address: Veleslavinova 6, Pilsen

Opening hours: Oct-Mar daily 10am-5pm. Apr-Sep 10am-6pm

Phone: +420 37 723 5574

Internet: www.plzenskepodzemi.cz

Email: podzemi@plzenskepodzemi.cz

More Info: Guided tours are available in Czech, English and German, and the schedules can be check on the website.

Techmania Science Center



Thanks to modern technologies the Pilsen, the 3D planetarium at Techmania Science Center ranks among the best facilities of its kind in within Europe, and itenables the whole family to travel in space faster than light to see almost 160 thousand of stars. While offering exhibitions with various subjects - from underground spaces to water worlds - you can here experience a wide range of movies about the Moon and the Earth's history as well as the sky above Pilsen without light pollution.

Photo: Pavel Gabzdyl/Shutterstock.com

Address: U Planetária, Pilsen

Opening hours: Daily 10am-6pm

Phone: + 420 73 724 7585

Internet: www.techmania.cz

Email: info@techmania.cz

Patton Memorial Pilsen



This memorial is the only museum in the Czech Republic dedicated to the US Army, reminding of the unforgettable happenings at the end of WW II. As exhibiting more than 1500 items about the liberation of Pilsen by the allied armies, with showing personal objects of soldiers, parts of armaments, sanitary material and equipment for sports, the local stay of American soldiers from May to November 1945 and the period of the post-war reconciliation are displayed most detailed.

Photo: Iakov Filimonov/Shutterstock.com

Address: Pobřežní 10, Pilsen

Opening hours: Wed-Sun 9am-1pm and 2pm-5pm

Phone: +420 37 803 7956

Internet: www.patton-memorial.cz

Email: info@patton-memorial.cz

Puppet Museum



While meeting Spejbl and his son Hurvínek, two traditional puppet characters originating in town, you will here find a great number of

marionettes and puppet theatres that map the long tradition of puppetry in Pilsen. Go ahead and try to play theatre yourself, with some of the puppets that you will probably know at least by sight (or name, or both).

Photo: Paolo Gallo/Shutterstock.com

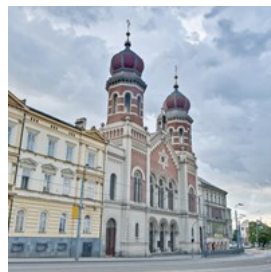
Address: Náměstí Republiky 23, Pilsen

Opening hours: Tue-Sun 10am-6pm

Phone: +420 37 837 0801

Email: muzeumloutek@zcm.cz

Old Synagogue



Hidden in the courtyard nearby Smetana's Parks, the oldest Jewish sight in the city of Pilsen regained its lost splendour after recent reconstruction,

but as situated in one of the internal blocks near the city centre, it cannot be missed. While an exhibition displays the history of Jewish people in the Pilsen region, with traditions and daily habits, the architecture itself is well worth a visit.

Photo: Anibal Trejo/Shutterstock.com

Address: Smetanovy Sady 5, Pilsen

Opening hours: Apr-Oct Sun-Fri 19am-6pm

Phone: +420 37 723 5749

Zoo and Botanical Garden



The zoo is the perfect place for a family trip, as you will here find more than 1,300 animal species in an attractive hilly area with small lakes and ponds as well as arboretum and rocks. A pair of Indian rhinoceros and Rothschild's giraffes are considered to be one of its biggest stars, but you will meet an open-space outdoor ground for monkeys and the second largest bear garden in Europe. The botanical part of this venue, with a meditation Japanese garden, invites you to relax after experiencing the wildlife, and for catching breath again.

Photo: stasia naumova/Shutterstock.com

Address: Pod Vinicemi 9, Pilsen

Opening hours: Apr-Oct daily 8am-7pm. Nov-Mar 9am-4:30pm

Phone: +420 37 803 8325

Internet: www.zooplzen.cz

Email: zoo@plzen.eu

DINING



Rawpixel.com/Shutterstock.com

In Pilsen, you can find a number of great restaurants serving both traditional Czech dishes and international cuisine. Take the chance to sit outside during the spring and summer months, at one of the many garden restaurants, while the winter brings cosy atmospheres to every venue

as well.

U Salzmannů



This venue is the oldest of its kind in Pilsen, and it offers both a guesthouse and a restaurant serving typical Czech meals.

While this is a great place to enjoy the fine unpasteurised Pilsner Urquell beer, do also try the traditional, and always matching cuisine that tells you a lot about the country's culture itself.

Photo: Tobik/Shutterstock.com

Address: Pražská 90/8, Pilsen

Opening hours: Mon-Thu 11am-11pm. Fri-Sat 11am-12am.

Sun 11am-10pm

Phone: +420 37 723 5476

Internet: www.usalzmannu.com/en/

Email: info@usalzmannu.com

U Mansfelda



This traditional restaurant features an outdoor terrace with a beautiful view over Křižkové sady, in the very centre of Pilsen, and

it also attracts with traditional Czech dishes. Head here for getting to know the local cuisine, and for enjoying a stay within a cosy and relaxing atmosphere.

Photo: Vaclav Mach/Shutterstock.com

Address: Dřevěná 9, Pilsen

Opening hours: Mon-Thu 11am-11pm. Fri-Sat 11am-12pm.

Sun 12pm-10pm

Phone: +420 377 333 844

Internet: www.umansfelda.cz

Email: info@umansfelda.cz

Purkmistr



This restaurant, at the Purkmistr Hotel, serves traditional Czech cuisine and a wide range of brand beers from their own brewery that can be

visited on the very same day, in the very same building. Head here for an authentic experience of both the Czech culture and the beers' history, and you will get insights into the process of brewing as well.

Photo: Tatiana Chekryzhova/Shutterstock.com

Address: Selská náves 2, Pilsen

Opening hours: Mon-Thu 11am-11pm. Fri-Sat 11am-12am. Sun 11am-10pm

Phone: +420 37 799 4312

Internet: www.purkmistr.cz/en/restaurant

Email: recepce@purkmistr.cz

Potrefená Husa



This modern and stylish restaurant near the main square offers Czech dishes with both traditional and international influences

as well as favourites from all over the world. Check out the menu of the day for experiencing great food at a bargain price.

Photo: Mirvav/Shutterstock.com

Address: Martinská 1, Pilsen

Opening hours: Sun-Thu 11am-12am. Fri-Sat 11am-1am

Phone: +420 37 732 0832

Internet: husaplzen.janakbros.cz

Email: husa@hospodska.cz

Comix Kitchen & Bar



In the very heart of the city, at the Republic Square, this modern restaurant serves daily specials as well as regular dishes with Czech

and international influences, and most fresh flavours. Committed to the refined kitchen, and first class dishes, you will here experience high quality in both food and also service.

Photo: Nick Starichenko/Shutterstock.com

Address: Náměstí republiky 14a, Pilsen

Opening hours: Mon-Thu 11am-12am. Fri 11am-1am. Sat 11:30am-1am. Sun 11:30am-11pm

Phone: +420 77 766 2800

Internet: www.comixpub.cz

Email: rezervace@comixpub.cz

Na Parkánu



This pub features a unique atmosphere that comes from a great service, excellent unpasteurised beers, and a traditional Czech

cuisine. Directly connected with the Brewery museum, you will here experience the best of Pilsen's beer tradition, and also some great time for mingling with locals.

Photo: Jarno Holappa/Shutterstock.com

Address: Veleslavínova 4, Pilsen

Opening hours: Mon-Wed 11am-11pm. Thu 11am-12am.

Fri-Sat 11am-1am. Sun 11am-10pm

Phone: +420 37 732 4485

Internet: www.naparkanu.com

Email: info@naparkanu.com

Restaurant 12



In the centre of Pilsen, as one of the most beautiful parts in the city, this restaurant serves traditional Czech cuisine in a modern way,

accompanied by high-quality unfiltered beer and lager stored in tanks. In the summer, you can experience the unique atmosphere of Pilsen in the garden, while the winter brings cosy times in the wooden interior.

Photo: Kichigin/Shutterstock.com

Address: Kopeckého sady 8, Pilsen

Opening hours: Mon-Thu 11am-12am. Fri-Sat 11am-1am. Sun 11am-11pm

Phone: +420 37 722 1409

Internet: www.restaurant-12.com

Švejk Restaurant U Pětatřicátníků



Serving traditional Czech cuisine and great beers, the lively atmosphere of this restaurant will welcome you as soon as you enter, with the smell

of goulash and a most happy mood. With its special interior and a design that resembles Czech pubs of the beginning of the 20th century, this is the perfect location for starting the day, or into the night.

Photo: darqdesign/Shutterstock.com

Address: Riegrova 12, Pilsen

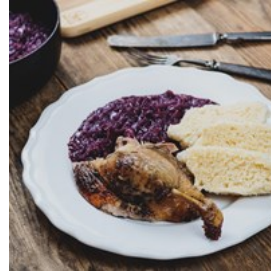
Opening hours: Mon-Thu 10:30am-11pm. Fri 10:30am-12am. Sat 11am-12am. Sun 11am-10pm

Phone: +420 37 797 0404

Internet: www.svejkplzen.cz/en/home

Email: plzen@svejk.cz

Na Spilce



This stylish restaurant opened in 1992, and located on the unique premises of the former fermentation cellar, directly in the famous

Pilsner Urquell Brewery fore yard, it is one of the biggest restaurants in the Czech Republic. Head here with a group of people, or just some close circle of friends, and you will experience traditional food and great beers.

Photo: stockfoto/Shutterstock.com

Address: U Prazdroje 7, Pilsen

Opening hours: Mon-Thu 11am-10pm. Fri-Sat 11am-11pm. Sun 11am-10pm

Phone: +420 37 706 2755

Internet: www.naspilce.com

Email: naspilce@naspilce.com

Rango



This restaurant serves excellent Italian and Mediterranean cuisine, and located in cellars from the 16th century, it features a romantic and

special atmosphere. Head here for celebrating a special event, and you will experience a most welcoming service, and freshest flavours that somehow feel almost exotic.

Photo: svariophoto/Shutterstock.com

Address: Pražská 10, Pilsen

Opening hours: Mon-Fri 11am-11pm. Sat-Sun 12pm-11pm

Phone: +420 37 732 9969

Internet: www.rango.cz

Email: info@rango.cz

Slunečnice



This stylish restaurant serves healthy food made of high quality ingredients, and besides poultry, fish and dark meat dishes, it also offers a wide selection of vegetarian meals. Head here for finding a huge menu as well as a great service that will welcome and see you off with a very big smile.

Photo: KatarinaVe/Shutterstock.com

Address: Jungmannova 4, Pilsen

Opening hours: Mon-Sat 11am-11pm. Sun 11am- 8pm

Phone: +420 37 727 0194

Internet: www.slunecniceplzen.cz

Email: slunecnice@slunecniceplzen.cz

CAFES



kikovic/Shutterstock.com

In Pilsen, there are plenty of pleasant cafes where you can sip on your cup of coffee, tea or wine at a reasonable price, all in a cosy and relaxed atmosphere. Stroll around in the city centre, and just stop by any cafe that attracts you most. Here are some cafes, tea rooms and wine bars in the city center we would recommend visiting.

Café Papírna



Located in a former paper mill, this stylish café has a unique industrial flair that attracts many coffee, tea and vegan snack lovers. Besides, miscellaneous cultural events are held here.

Photo: Brent Gorwin/Unsplash.com

Address: Zahradní 2, Pilsen

Phone: +420 735 170 351

Internet: www.papirnaplzen.cz

Email: jaroslav@papirnaplzen.cz

More Info: Cultural center with a stylish café

Nykty's Café



A modern café located in the very heart of the city of Pilsen, right in its main square. It offers a variety of coffees, teas, juices, a breakfast menu, and alcoholic as well as non-alcoholic drinks.

Photo: Joseph Gonzalez/Unsplash.com

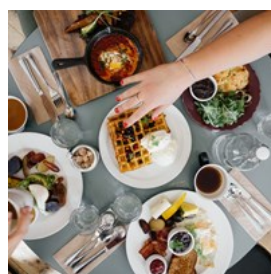
Address: nám. Republiky 12, Pilsen

Phone: +420 604 526 182

Internet: www.nyktys.cz

Email: info@nyktys.cz

Le Frenchie Café



A brand new café, inspired by France. Apart from coffee, it offers a great variety of health food and cakes.

Photo: Ali Inay/Unsplash.com

Address: Smetanovy sady 6, Pilsen

Phone: +420 777 229 932

Internet: www.lefrenchie.cz

Email: info@lefrenchie.cz

Café Regner



Non-smoking café in the heart of the city, some call it an art gallery with coffee.

Photo: John Bogna/Unsplash.com

Address: Bezručova 7, Pilsen

Phone: +420 601 316 300

More Info: 1 floor

SiCaffé



A nice place with pleasant atmosphere that offers one of the best home-made cakes in town. The menu also contains a wide selection

of ice cream and sorbets.

Photo: Rodolfo Marques/Unsplash.com

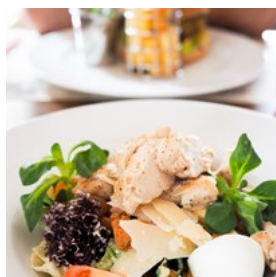
Address: Anglické nábřeží 12a, Plzeň

Phone: +420 608 267 749

Internet: www.sicaffe.cz

Email: info@sicaffe.cz

Café Restaurant Kačaba



At this wonderful cafe, which employs people with special needs, you can get a delicious breakfast, nice snack or even a warm lunch or

dinner. There is also a vegetarian option on the menu.

Photo: Katka Pavlickova/Unsplash.com

Address: Prokopova 17, Plzeň

Phone: +420 373 034 160

Internet: www.kacaba.cz

Email: kacaba@moznostitujsou.cz

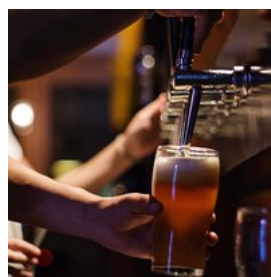
BARS & NIGHTLIFE



Elevate/Unsplash.com

An endless source of entertainment and quality programs of various genres – that are Pilsen clubs. The best known ones include Zach's Pub, Buena Vista and Jazz Rock Café. There is also a lot of lively bars and nice places where you can spend a pleasant evening with your friends.

The PUB Plzeň



The PUB Plzeň offers tasty food, the highest quality beer, a wide selection of drinks and a lot of fun as you can tap your own beer at one of the tables equipped with self-service beer taps.

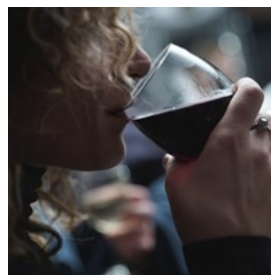
Photo: Gonzalo Remy/Unsplash.com

Address: Pražská 1, Plzeň

Phone: +420 377 32 10 01

Internet: www.thepub.cz

Anděl Music Bar



At Anděl music bar, nice music always plays until the early morning hours. It doubles as a cafe during the daytime.

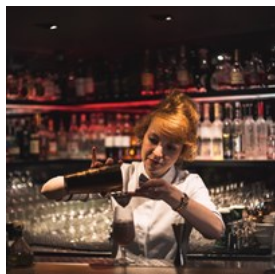
Photo: Alfonso Scarpa/Unsplash.com

Address: Bezručova 5, Plzeň

Phone: +420 773 830 712

Internet: www.andelcafe.cz/musicbar

Zapa Bar



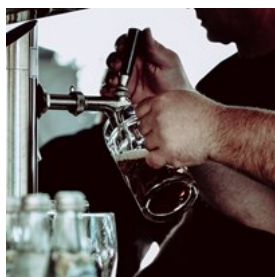
A perfect place for those who are itching for high-quality cocktails to enjoy in a cozy, not too noisy environment in the very city center.

Photo: Jakub Dziubak/Unsplash.com

Address: Bedřicha Smetany 6, Pilsen

Phone: +420 377 227 427

Žumberská stodola



Music club located close to the main square, with a focus on oldies music (Fridays 1980s and 90s, Saturdays 1960s-80s).

Photo: Julian Hochgesang/Unsplash.com

Address: Bezručova 14, Pilsen

Phone: +420 773 595 404

Internet: www.zumberskastodola.cz

Email: zumberska.stodola@email.cz

Pantheon



Pantheon is a popular nightclub in Pilsen. Visitors will especially enjoy its variety and exceptional interior design. Different music styles are played on two stages and in VIP lounges.

Photo: Matty Adame/Unsplash.com

Address: Anglické nábřeží 27, Plzeň

Internet: www.pantheonclub.cz

Buena Vista Club



dancehall and hip-hop.

The music club with a unique interior design regularly hosts a variety of musical performances, and is of special interest for lovers of r'n'b,

Photo: madeleine ragsdale/Unsplash.com

Address: Kollárova 20, Plzeň

Phone: +420 377 921 291

Internet: www.buenavistaclub.cz

Zach's Pub



organizing concerts featuring bands playing in various genres.

This combo of Irish pub and music club offers a wide selection of beer and whisky, as well as nice warm dishes. It is famous for regularly

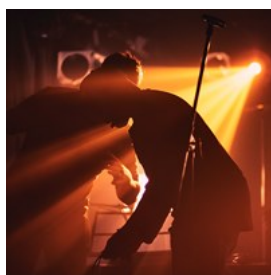
Photo: Lightscape/Unspalsh.com

Address: Palackého náměstí 2, Plzeň

Phone: +420 377 223 176

Internet: www.zachspub.cz

Jazz Rock Cafe



A nice cocktail bar with live music shows hosted from time to time (funk, rock, blues, latin, jazz, and more).

Photo: Takahiro Sakamoto/Unsplash.com

Address: Sedláčkova 18, Plzeň

Phone: +420 377 224 294

Internet: <http://jazz.magicpoint.cz/cz/index.php>

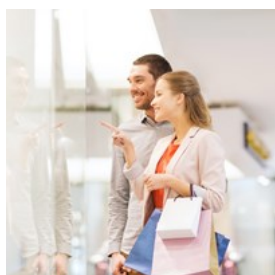
SHOPPING



blurAZ/Shutterstock.com

Apart from miscellaneous shops and shopping malls, there are also traditional farmers markets in the main square, taking place throughout the whole year.

Plaza Plzeň Shopping Centre



The shopping mall is located in an attractive place near the historical city centre and is easily accessible by public transport or on foot. Its services include a multiplex Cinema City and a large bowling centre Fantasy Park. Outside the shopping centre, there is a large park area with mini-golf and a playground area for children.

Photo: Syda Productions/Shutterstock.com
Address: Radčická 2, Plzeň
Opening hours: Daily 9 a.m. - 9 p.m. (shops)
Internet: plzen-plaza.klepierre.cz

Sklo porcelán Prešovská



This shop, situated just a few steps from the central square, offers luxurious porcelain ware, glassware and Czech ceramics.

Photo: Victoria Strukovskaya/Unsplash.com

Address: Prešovská 14, 301 00 Plzeň
Opening hours: Mon - Fri 9am - 6pm; Sat 9am - 1pm
Phone: +420 377 328 519
Internet: www.plzen-info.cz/crystal
Email: plzen.sklo@seznam.cz

Český porcelán



A shop selling original Czech porcelain ware.

Photo: Bernard Tuck/Unsplash.com
Address: Rooseveltova 2, 301 12 Plzeň
Phone: +420 377 237 011
Internet: www.cesky.porcelan.cz
Email: prodejnaPlzen@cesky.porcelan.cz

The Candy Store



Although this candy store does not exactly stock local specialities, it still makes for a fun browse thorough with its fine selection of (primarily) American and British goodies, from Pop Tarts to Musketeers bars and US-only sodas.

Photo: Alex lby/Unsplash.com
Address: Veleslavínova 50/24, 301 00 Plzeň
Phone: +420 720 213 816
Internet: www.candy-store.cz

Originál Design Shop



For original designer souvenirs that stand out dramatically against the backdrop of generic beer mug magnets and the like, try Originál, which stocks fun and quirky works by local artisans.

Photo: Hao Feng/Unsplash.com

Address: Bezručova 176/24, 301 00 Plzeň

Phone: +420 737 365 821

TOURIST INFORMATION



Paloma A./Unsplash.com

Passport / Visa



The Czech Republic can be visited visa-free for up to 90 days by citizens of most European countries, Australia, New Zealand, Japan, South Korea,

Taiwan, Malaysia, Israel, UAE and most countries in America. If you are unsure whether or not you need to apply for a visa, we recommend contacting the embassy or consulate in your country. International (non-Schengen) travelers need a passport that is valid for at least 3 months after the end of their intended trip in order to enter the Schengen zone. Citizens of Schengen countries can travel without a passport, but must have a valid ID with them during their stay.

Photo: TukTuk Design/Shutterstock.com

Best Time to Visit



There are perks to visiting Pilsen all year around, especially so during the summer and fall months, when the highest concentration of

vibrant festivities takes over the town nearly every weekend (such as an entire festival dedicated to the celebrated Pilsner Urquell in October).

Winters rarely ever get too cold, with temperatures rarely dropping lower than just a couple degrees below zero.

Photo: VectorA/Shutterstock.com

Václav Havel Airport Prague



The closest airport to Pilsen is Václav Havel Airport in Prague, approximately 90 km northeast to the city. You can travel to Pilsen by all

means, including car rental, taxi, bus and train services, and you will find all the information at the airport as well as on the airport's and businesses' websites.

Bus: www.studentagency.cz

Train: www.cd.cz

Photo: Juan Garces

Address: Aviatická, Prague

Phone: +420 22 011 1888

Internet: www.prg.aero/en

Public Transport



The network of Pilsen Public Transportation Company consists of trams, buses and trolleybuses, and you can purchase a various tickets

for different distances and time periods on board, at newsstands and at the tourist information centre. Ticket prices as well as schedules and routes can be checked on the internet.

Photo: Pierre-Luc Auclair
Phone: +420 37 165 5600
Internet: www.pmdp.eu

Taxi



There is a number of taxi companies offering rides for similar prices, but hailing a taxi in the streets can be more expensive. Autoslužba

Taxi Plzeň is a well known company but there are other services operating throughout the whole town as well:

Radiotaxi
+420 37 737 7377

EcoCity Taxi
+420 77 736 1361

Photo: Taxi
Phone: +420 37 722 0220
Internet: www.autosluzba-taxi.cz

Pharmacy



Pharmacies can be found across town, and they are usually open at least Mon-Fri 8am-5pm and marked by a chain's logo, such as BENU or Dr.

Max. A central venue of Dr. Max located right in the city centre but there are many other shops offering similar services as well:

BENU Lékárna
Americká 90/11, Pilsen
+420 73 163 8102
Opening hours: Mon-Fri 7:15am-6pm

Dr. Max
B. Smetany 139/1, Pilsen
+420 37 726 1480
Opening hours: Mon-Fri 8am-6pm

Photo: Gemma Garner
Address: Tylova 2090/1, Pilsen
Opening hours: Mon-Fri 7am-6pm
Phone: +420 73 057 3409

Post



There are several post offices throughout the town, and they all offer any service. Normal shops, as a central one at V Bezovce, are open at

least Mon-Fri 9am-6pm but working hours can also vary. Stamps can be bought in post offices, the tourist information centre as well as at newsstands, and the post boxes of the Czech post office are of orange colour.

Doudlevecká 277/13, Pilsen
+420 95 423 0500
Opening hours: Mon-Fri 8am-5pm

Škroupova 1900/5, Pilsen

+420 37 722 3830

Opening hours: Mon-Fri 9am-6pm

Photo: Andy Fuchs

Address: V Bezovce 1979/2, Pilsen

Opening hours: Mon-Fri 8am-6pm

Telephone



Country code: +420 Area
code: 37

Photo: Jardson Almeida

Electricity



230 V, 50 Hz, C/E

Photo: Stirling Tschan

Population

170,500

Currency

1 Czech Crown = 100 Heller

Newspapers

Lidové noviny

Mladá fronta Dnes

Právo

Emergency numbers

European Emergency Number: 112

Tourist information

Tourist Information Centre of the City of Pilsen

Náměstí Republiky 41, Plzeň

+420 378 035 330

info@visitplzen.eu

Opening hours: Apr-Sep: daily 9am-7pm. Oct-Mar daily
9am-6pm