



Photo: JeniFoto/Shutterstock



Catarina Belova/Shutterstock



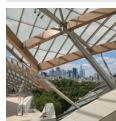
Ioan Panaite/Shutterstock



Song_about_summer/Shutterstock

Few cities match the iconic status that Paris holds in the imagination of travellers. In fashion, gastronomy, and the arts, she is queen. As you wander through the different quarters of the City of Light, her moods shift from gritty to sophisticated, from haute couture to underground. There is always something new to discover here beyond the legendary sights and museums. Paris has a way of getting under your skin, feeling instantly familiar as you lose yourself in her hypnotic streets and linger at her cafés.

Featured



Louis Vuitton Foundation

The Louis Vuitton Foundation is as much about the building as what's inside...



Parc Montsouris

Parc Montsouris is one of four major parks created under Napoleon III at the...



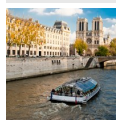
Sacré-Cœur Basilica

Perched atop Montmartre, the highest point in Paris, Sacré-Cœur's white dome...



Panthéon

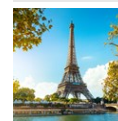
Originally built as a church to house the reliquary of Saint Genevieve, this...



The River Seine

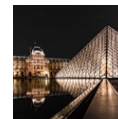
The Seine cuts through the heart of Paris, and seeing the city from the water...

Top 5



Eiffel Tower

Rising 324 metres above Paris, the Eiffel Tower was unveiled in 1889 as part...



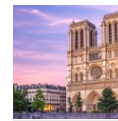
Louvre Museum

The Louvre is one of the world's biggest museums and home to some of the mos...



Arc de Triomphe

The Arc de Triomphe, commissioned by Napoleon after his win at Austerlitz in...



Notre-Dame Cathedral of Paris

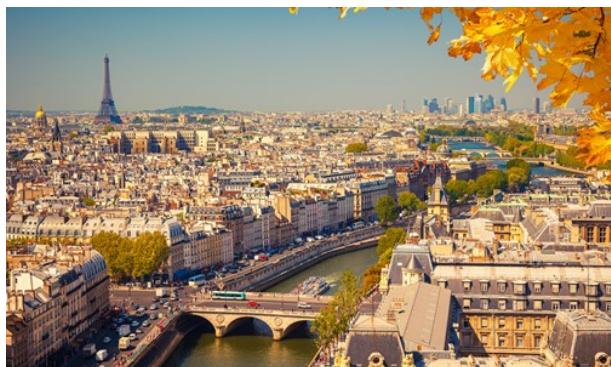
Notre-Dame stands on Île de la Cité, often called the birthplace of Paris. T...



Montmartre

Montmartre is one of Paris's most charming and bohemian neighbourhoods, crow...

THE CITY



S.Borisov/Shutterstock

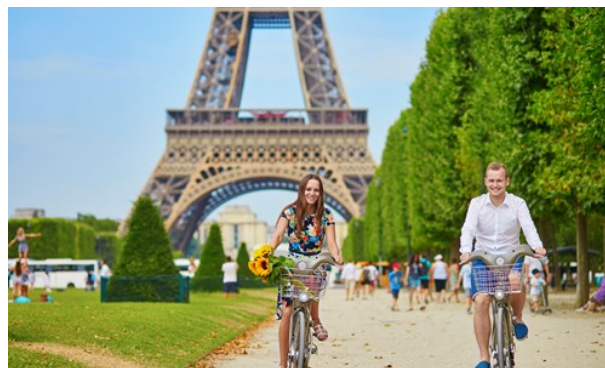
Writers, travellers, artists, photographers, and filmmakers have tried to capture the magic of the French capital for hundreds of years. Time and time again, they have failed.

It may be possible to understand and admire the magnificence of its architectural splendours, the appeal of its long tree-lined boulevards, and the draw of its vast, green parks, but that unique feeling of strolling through this open-air museum on a clear night cannot be reproduced by any medium. Paris is a city that must be experienced first-hand.

Instantly recognisable for its iconic architecture, the City of Light is a vibrant metropolis in constant change. Although perennial monuments like the Eiffel Tower, Arc de Triomphe, and Notre-Dame Cathedral are a must, as are world-renowned museums such as the Louvre and Musée d'Orsay, there are wonders to be found on every corner. From the trendy bars, boutiques, and galleries of Marais to the artsy and bohemian feel of Montmartre to the grandiose elegance along the Seine, there is plenty for all tastes, a full range extending from earthy grit to over-the-top sophistication, but always with an emphatic and inimitable Parisian flavour.

A pioneer in the design of all kinds, Paris is consistently at the forefront of innovation in everything from the arts and culture to fashion and gastronomy. Be it for shopping, dining, or sightseeing, it is hard to find a better place than this, the world's most visited city.

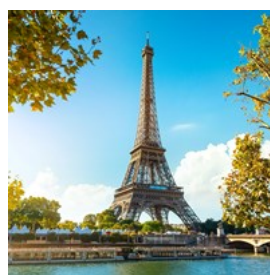
DO & SEE



Ekaterina Pokrovsky/Shutterstock

There's never enough time to take in all that Paris has to offer. Its museums and monuments can captivate you for days, but the real magic often comes from simply wandering its streets, discovering hidden squares, lively cafés, and unexpected views. One thing is certain — in Paris, you'll never run out of things to see, do, and experience.

Eiffel Tower



Rising 324 metres above Paris, the Eiffel Tower was unveiled in 1889 as part of the World's Fair celebrating 100 years since the Revolution.

Though controversial at first for its unusual, industrial look — many Parisians felt it clashed with the city's classic architecture and called it an eyesore — it quickly became the city's defining symbol. Today, nearly 7 million visitors a year come for the views, to snap that classic photo, and to experience standing atop one of

the world's most unforgettable landmarks.

Photo: Osama Wissam/Shutterstock

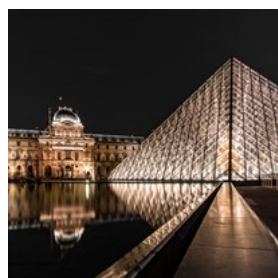
Address: Avenue Gustave Eiffel, Paris

Public Transport: The closest Metro stations to the Eiffel Tower are Bir-Hakeim (Line 6) and Trocadéro (Lines 6 and 9). Both are about a 10-minute walk from the tower, with Trocadéro offering one of the best views across the Seine. You can also take the RER C to Champ de Mars - Tour Eiffel station, which is right next to the park at the base of the tower.

Opening hours: Daily 9am-11:45pm

Internet: www.toureiffel.paris/en

Louvre Museum



The Louvre is one of the world's biggest museums and home to some of the most famous artworks you'll ever see — think the Mona Lisa and Venus de Milo, alongside pieces by Rembrandt, Vermeer, and Caravaggio. Its glass pyramid entrance is instantly recognisable. Inside, you'll find around 35,000 paintings, sculptures, and objects, covering everything from ancient civilisations to 19th-century art.

Photo: Michael Fousert/Unsplash

Address: Musée du Louvre, Paris

Public Transport: The closest Metro station to the Louvre is Palais Royal - Musée du Louvre on Lines 1 and 7.

Phone: +33 1 40 20 53 17

Internet: www.louvre.fr

Email: info@louvre.fr

Arc de Triomphe



The Arc de Triomphe, commissioned by Napoleon after his win at Austerlitz in 1806, took about 30 years to finish and was finally opened in 1836. Standing 50 metres tall, it sits at the

centre of Place Charles de Gaulle, right at the western end of the famous Champs-Élysées. You'll probably find yourself there at some point, as most visitors wander down this iconic avenue. The monument honours those who fought and died for France during the Revolution and Napoleonic Wars. Beneath it rests the Tomb of the Unknown Soldier from World War I.

Photo: Artistic Ahry/Shutterstock

Address: Place Charles de Gaulle, Paris

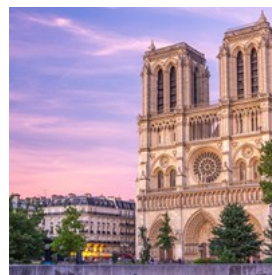
Public Transport: The closest Metro stations to the Arc de Triomphe are Charles-de-Gaulle-Étoile, served by Lines 1, 2, and 6.

Opening hours: Daily 10am-10:30pm

Phone: +33 1 55 37 73 77

Internet: www.paris-arc-de-triomphe.fr

Notre-Dame Cathedral of Paris



Notre-Dame stands on Île de la Cité, often called the birthplace of Paris. The site has been sacred for thousands of years—long before the cathedral, there were Celtic worship spots, then Roman temples, followed by a Romanesque church. The Gothic cathedral we see today was completed in 1345 and became the heart of medieval Paris. Despite the fire in 2019 that damaged much of it, the main structure and most treasures survived. It stretches 128 metres long with two towers rising 69 metres high, still commanding the city's skyline.

Photo: Kirill Neiezhmakov/Shutterstock

Address: 6 Parvis Notre-Dame - Place Jean-Paul II, Paris

Public Transport: The closest Metro stations to Notre-Dame are Cité (Line 4) and Saint-Michel (Lines 4 and RER B, C).

Phone: +33 1 42 34 56 10

Internet: www.notredamedeparis.fr

Montmartre

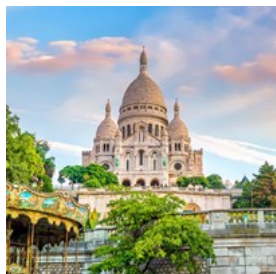


Montmartre is one of Paris's most charming and bohemian neighbourhoods, crowned by the white-domed Sacré-Cœur at the city's highest point. Once home to artists like Dalí, Monet, and Picasso, its streets are still alive with painters and caricaturists, especially around Place du Tertre. Fans of *Amélie* will recognise many corners, and downhill in Pigalle you'll find the iconic Moulin Rouge and the Lapin Agile, a historic cabaret that once drew poets, painters, and singers.

Photo: Kazuo ota/Unsplash

Public Transport: The closest Metro stations to Montmartre are Blanche, Pigalle, and Anvers (Line 2) and Abbesses (Line 12).

Sacré-Cœur Basilica



Perched atop Montmartre, the highest point in Paris, Sacré-Cœur's white domes are visible for miles. Built in the late 19th and early 20th centuries, it houses one of the world's largest mosaics and offers sweeping views from its dome. The steps out front are a favourite place to gather, especially at sunset.

Photo: f11photo/Shutterstock

Address: 35 Rue du Chevalier de la Barre, Paris

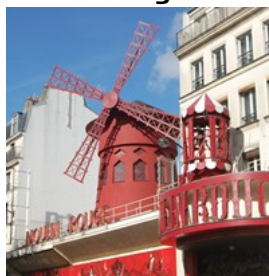
Public Transport: The closest Metro stations to Sacré-Cœur are Anvers (Line 2) and Abbesses (Line 12).

Opening hours: Daily 6:30am-10:30pm

Phone: +33 1 53 41 89 00

Internet: www.sacre-coeur-montmartre.com

Moulin Rouge



A trip to Paris is not complete without a visit to the legendary Moulin Rouge. Since 1889, this iconic Parisian landmark has held the title of the most famous cabaret in the world, thanks to its French can-can and the larger-than-life shows featuring expertly choreographed dancing, elaborate sets, and glamorous costumes. Sip on French Champagne, enjoy dinner in a beautiful Belle Époque venue, and experience the show *Féerie*, which you are sure to remember for years to come.

Photo: Milena Nadier/Shutterstock

Address: 82 Boulevard de Clichy, Paris

Public Transport: The closest Metro station to the Moulin Rouge is Blanche (Line 2).

Phone: +33 1 53 09 82 82

Internet: www.moulinrouge.fr/en/homepage

Email: information@moulinrouge.fr

Seine River Cruise



Boat cruises on the Seine embark at the foot of the Eiffel Tower and take you through the heart of Paris, where you can admire the prestigious monuments and landmarks of the city and the stunning architecture from bridge to bridge and bank to bank.

To learn history along the way, plug in your audio guide and choose your language. Come back at night for another tour, and it will be a different Paris before your eyes, yet just as magical.

Photo: alexandria/Pixabay

Palace of Versailles



The town of Versailles is a wealthy Parisian suburb and municipality, located 20 kilometres outside the city. In the 11th century, Versailles was merely a country village enveloping a castle and the church of Saint-Julien. Today, it is mostly known for the lavish Château de Versailles, which served as home to King Louis XIV and the summer palace to Napoleon. It also saw the historic signing of the Treaty of Versailles in 1919 in the now-legendary Hall of Mirrors.

Photo: Mistervlad/Shutterstock

Address: Place d'Armes, Versailles

Opening hours: Tue-Sun 9am-6:30pm, Mon closed

Phone: +33 1 30 83 78 00

Internet: <https://en.chateauversailles.fr>

Musée d'Orsay



Housed in a former railway station, the Musée d'Orsay holds a mesmerising collection of mainly French paintings, sculptures, and photography, including the world's largest collection of impressionist and post-impressionist paintings, with works from artists such as Van Gogh, Cézanne, Renoir, and Monet.

Photo: Frank Lambert/Shutterstock

Address: Esplanade Valéry Giscard d'Estaing, Paris

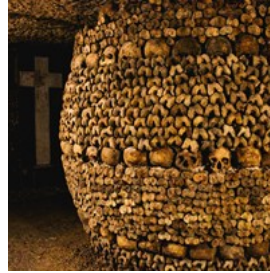
Public Transport: The closest Metro station to the Musée d'Orsay is Solférino (Line 12), and the closest RER station is Musée d'Orsay (RER C).

Opening hours: Tue-Sun 9:30am-6pm, Thu until 9:45pm, Mon closed

Phone: +33 1 40 49 48 14

Internet: www.musee-orsay.fr/en

Catacombs of Paris



Installed in the tunnels of former quarries, in the heart of Paris, the Catacombs are at once a fascinating and eerie attraction. Walk down the many steps to experience this spooky underground cemetery. Here you will find the osseous remains of more than 6 million people, moved to this location from an old cemetery.

Photo: I. Casavechia/Shutterstock

Address: 1 Avenue du Colonel Henri Rol-Tanguy, Paris

Public Transport: The closest Metro station to the Catacombs of Paris is Denfert-Rochereau (Lines 4 and 6, and RER B).

Opening hours: Tue-Sun 9:45am-8:30pm, Mon closed

Internet: www.catacombes.paris.fr/en

Disneyland Paris



If you're ready to swap Paris's romantic boulevards for a different kind of magic, head to Disneyland Paris. The resort has two parks: Disneyland Park, packed with rides, shows, restaurants, cafés, and endless shops; and Walt Disney Studios Park, which adds movie sets, live performances, and behind-the-scenes fun to the mix. Stroll down Main Street, U.S.A., set sail for Adventureland, or meet your favourite characters in Fantasyland. Whether you're a kid, a grown-up, or somewhere in between, there's more than enough here to keep the magic alive all day.

Photo: Hananeko_Studio/Shutterstock

Address: Boulevard de Parc, Coupvray, France

Public Transport: The closest RER station to Disneyland Paris is Marne-la-Vallée-Chessy (RER Line A).

Opening hours: Daily 9:30am-10:40pm

Phone: +33 9 69 32 60 66

Internet: www.disneylandparis.com/en-usd

Panthéon



Originally built as a church to house the reliquary of Saint Genevieve, this neoclassical building in the Latin Quarter,

modelled after the Pantheon in Rome, is the final resting place of numerous writers, philosophers, poets and scientists, such as Rousseau, Voltaire, Victor Hugo, Émile Zola, and Marie Curie.

Photo: Nikitin Mikhail/Shutterstock

Address: Place du Panthéon, Paris

Public Transport: The closest Metro station to the Panthéon is Cardinal Lemoine (Line 10).

Opening hours: Daily 10am-6:30pm

Internet: www.paris-pantheon.fr/en

Place de la Concorde



Place de la Concorde is an expansive square located at the eastern end of the Champs-Élysées. It holds historical importance for several

reasons: the liberation struggle during World War II brought many battles to Place de la Concorde; during the French Revolution, over a thousand people were beheaded here, many of them famous: Louis XVI, Marie Antoinette, and revolutionary Robespierre, to name a few. The site is dominated by the 24-metre Obélisque de Louxor, one of Cleopatra's needles - a gift from Egyptian viceroy Mohammed Ali to Louis Philippe.

Photo: Bill Poon/Shutterstock

Address: Place de la Concorde, Paris

Public Transport: The closest Metro stations to Place de la Concorde are Concorde (Lines 1, 8, and 12) and Tuileries (Line 1).

Centre Pompidou



The Centre Pompidou stands out with its bold, high-tech design — pipes and escalators on the outside make it hard to miss. Inside, you'll find

Europe's largest modern art museum, a big public library, and a hub for music and sound research. When it was built, many Parisians hated it for clashing with the classic city vibe, and its construction meant knocking down the famous Les Halles market nearby. Now, it's a lively spot for art lovers and anyone curious about something a bit different.

Photo: Jorge Felix Costa/Shutterstock

Address: Place Georges-Pompidou, Paris

Public Transport: The closest Metro stations to Centre Pompidou are Rambuteau (Line 11) and Hôtel de Ville (Lines 1 and 11).

Opening hours: Wed-Mon 11am-7pm, Tue closed

Phone: +33 1 44 78 12 33

Internet: www.centrepompidou.fr/en/

Email: contact@contact-centrepompidou.fr

More Info: The Centre Pompidou will close for major renovations from September 2025 until around 2030.

Meanwhile, its exhibitions will continue at other venues across Paris and beyond.

Père Lachaise Cemetery



Père Lachaise is the largest cemetery in Paris and is reputed to be the most visited in the world. It is a huge and peaceful park and the final resting

place of many Frenchmen and foreigners who have enriched French life over the past 200 years, including Edith Piaf, Oscar Wilde, Camille Pissarro, Marcel Proust, Molière, Max Ernst, Maria Callas, and Jim Morrison, to name just a few.

Photo: bensliman hassan/Shutterstock

Address: 16 Rue du Repos, Paris

Public Transport: The closest Metro stations to Père Lachaise Cemetery are Père Lachaise (Lines 2 & 3), Gambetta (Line 3), Philippe Auguste (Line 2), and Alexandre Dumas (Line 2).

Opening hours: Mon–Thu 8am–6pm, Fri–Sun 9am–6pm

Phone: +33 1 55 25 82 10

Internet: www.paris.fr/dossiers/bienvenue-au-cimetiere-du-pe-re-lachaise-47/

Champs-Élysées



The Champs-Élysées stretches nearly two kilometres from Place de la Concorde up to Place Charles de Gaulle, where the Arc de Triomphe

stands tall. It's a great spot for a stroll any time of year and comes alive during major celebrations like Bastille Day or New Year's Eve. Each July, the final stage of the Tour de France races down this famous avenue.

Photo: S1001/Shutterstock

Address: Avenue des Champs-Élysées, Paris

Public Transport: The closest Metro stations are Concorde (Lines 1, 8, 12) at the southeast end, and Charles-de-Gaulle-Étoile (Lines 1, 2, 6) at the northwest.

Pont Neuf



Despite its name meaning 'New Bridge', Pont Neuf is actually Paris's oldest bridge over the Seine, dating back to the 16th century. It's also a great

starting point to explore some of the city's most famous sights. From here, you can easily wander around Île de la Cité to visit the Conciergerie, the old royal palace turned prison, and the stunning Sainte-Chapelle with its incredible stained glass windows. Just across the river lies the Louvre Museum, while a short walk takes

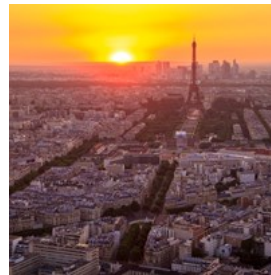
you to the peaceful Place Dauphine, a hidden gem of a square. And, of course, the iconic Notre-Dame Cathedral is also close by.

Photo: Luciano Mortula - LGM/Shutterstock

Address: Pont Neuf, Paris

Public Transport: The closest Metro station to Pont Neuf is Cité (Line 4).

Montparnasse Tower



Montparnasse Tower stands out as the only skyscraper in central Paris, reaching 210 metres high. Head up to the 56th-floor observation

deck for clear, wide views of the city's landmarks — the Eiffel Tower, the Louvre, Notre-Dame, and more. With its modern design and a quick elevator ride, Montparnasse Tower provides an alternative viewpoint for those seeking an awe-inspiring Parisian experience beyond the traditional cityscape.

Photo: Henrique Ferreira/Unsplash

Address: 33 Avenue du Maine, Paris

Internet: www.tourmontparnasse56.com/en

Le Marais



Le Marais, on the Right Bank in the 3rd and 4th arrondissements, mixes old and new with its 17th-century buildings and trendy vibe. It's a

lively area known for its museums, galleries, quirky shops, and buzzing nightlife. You'll also find plenty of kosher restaurants and historic spots like Place des Vosges — Paris's oldest square — where the writer Victor Hugo once lived. Plus, it's a hub for the city's LGBT community, making it one of Paris's most

colourful neighbourhoods.

Photo: Mistervlad/Shutterstock

Public Transport: The closest Metro stations to Le Marais are Saint-Paul (Line 1) and Hôtel de Ville (Lines 1 and 11).

The River Seine



The Seine cuts through the heart of Paris, and seeing the city from the water is one of the easiest ways to take in its big-name sights — from the Eiffel Tower to Notre-Dame. A veritable Parisian institution since 1949, the Compagnie des Bateaux Mouches® runs cruises year-round, with most following a similar route and offering multilingual commentary. Whether you go for a daytime ride or a nighttime cruise when the bridges and monuments are lit up, it's a relaxing way to see the city from a different angle.

Photo: Marco Saracco/Shutterstock

Phone: +33 1 42 25 96 10

Internet: www.bateaux-mouches.fr/en/cruise

Email: info@bateaux-mouches.fr

Luxembourg Garden



The Jardin du Luxembourg is one of Paris's most beloved green spaces, situated in the 6th arrondissement and home to the French Senate. Commissioned by Marie de' Medici in the 17th century, it's a mix of manicured lawns, flowerbeds, fountains, and shady promenades. Locals come here to run, read, sail toy boats on the pond, or just sit and watch the world go by — from students and chess players to kids on the playground and politicians on their lunch break. The Luxembourg Palace sits at its centre, and

the Medici Fountain remains one of its most photographed spots.

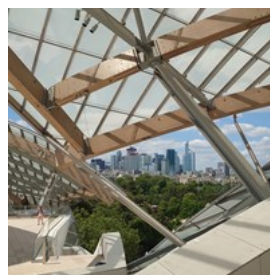
Photo: DaLiu/Shutterstock

Address: Boulevard Saint-Michel, Paris

Public Transport: The closest RER station to the Jardin du Luxembourg is Luxembourg (RER B), with nearby Metro stations Odéon and Mabillon (Line 4 and 10).

Internet: <https://jardin.senat.fr/en.html>

Louis Vuitton Foundation



The Louis Vuitton Foundation is as much about the building as what's inside. Designed by Frank Gehry, its glass sails and sweeping curves are worth the trip alone. Inside, you'll find changing exhibitions of contemporary art from around the world, along with concerts, film screenings, and workshops.

Photo: Maria Ardila/Shutterstock

Address: 8 Avenue du Mahatma Gandhi, Paris

Public Transport: The closest Metro station to the Louis Vuitton Foundation is Les Sablons (Line 1).

Opening hours: Mon 11am–8pm, Wed & Thu 11am–8pm, Fri 10am–9pm, Sat & Sun 10am–8pm, Tue closed

Phone: +33 1 40 69 96 00

Internet: www.fondationlouisvuitton.fr/en

Email: contact@fondationlouisvuitton.fr

Cheese and Wine Workshops



Immerse yourself in the quintessential French art of making cheese at Paroles de Fromagers. Join a workshop that not only guides you through the art of making cheese but also offers an exquisite cheese and wine tasting session. Learn the craft of cheese-making firsthand and discover the perfect wine pairings for each variety — an absolutely great experience for

gourmets.

Photo: George Dolgikh/Shutterstock

Address: 41 Rue du Faubourg du Temple, Paris

Phone: +33 1 48 03 98 18

Internet: <https://parolesdefromagers.com/en/>

Email: contact@parolesdefromagers.com

Parc Montsouris



Parc Montsouris is one of four major parks created under Napoleon III at the edges of Paris. With its lake, waterfall, and wide lawns, it's a year-round favourite for locals — whether for a picnic, a run, or just some quiet time outdoors.

Photo: Rrrainbow/Shutterstock

Address: 2 Rue Gazan, Paris

Public Transport: The closest station to Parc Montsouris is Cité Universitaire (RER B).

Opening hours: Daily 7am-midnight

Phone: +33 6 83 47 89 91

Internet: www.paris.fr/lieux/parc-montsouris-1810

DINING



Jene Smu/Shutterstock

Paris's food scene is as varied as it is reliable—classic bistros, tiny family-run spots, bustling cafés, and Michelin-starred restaurants all share the city. You'll find everything from old-school French dishes to inventive modern cuisine, with sweets, pastries, cheeses, and fresh

market produce never far away. Finish off with a chocolate from a specialist chocolaterie or a glass of fine local wine, and you've had a proper taste of the city.

Brasserie de l'Hôtel du Nord



A Paris landmark thanks to Marcel Carné's 1930s film, this canal-side brasserie on the Quai de Jemmapes serves a mix of French classics like steak tartare and duck confit with seasonal specials. It's a pleasant spot for a leisurely lunch or dinner, especially if you can snag a window seat to watch life along the Canal Saint-Martin drift by.

Photo: sasazawa/Shutterstock

Address: 102 Quai de Jemmapes, Paris

Public Transport: The closest Metro stations to Brasserie de l'Hôtel du Nord are Jacques Bonsergent (Line 5) and République (Lines 8 & 9).

Opening hours: Sun-Thu 9am-midnight, Fri & Sat 9am-2am

Phone: +33 1 40 40 78 78

Internet: <https://hoteldunord.org>

Chez Fernand Christine



For a dinner that hits classic Paris without feeling staged, head to Chez Fernand Christine. Just off Odéon, its three vaulted rooms — exposed beams, red-brick walls, and checkered tablecloths — feel like stepping back into old Paris, low ceilings and a cosy buzz included.

The menu ploughs through traditional French territory — bouillons, boeuf bourguignon and tarte tatin for a sweet finish. The wine list is hard to ignore — around 1,300 bottles, enough to

spoil even casual wine drinkers for choice.

Photo: DGLimages/Shutterstock

Address: 9 Rue Christine, Paris

Public Transport: The closest Metro stations to Chez Fernand Christine are Saint-Germain-des-Prés (Line 4) and Mabillon (Line 10).

Opening hours: Daily noon-2:30pm / 7pm-11pm

Phone: +33 1 43 25 18 55

Internet: www.restaurantchezfernand.fr/en

Le Bistrot du Peintre



Le Bistrot du Peintre has been holding court on avenue Ledru-Rollin since 1902, its curving woodwork, etched glass, and tiled floors a textbook example of Parisian Art Nouveau. The century-old bistro still serves up traditional French fare — duck confit, steak-frites, and seasonal specials — alongside a wine list that mixes well-known estates with small, independent producers. Renovated in 2012 without losing an ounce of its old-world charm, it's as much a feast for the eyes as it is for the appetite.

Photo: New happy world/Shutterstock

Address: 116 Avenue Ledru Rollin, Paris

Opening hours: Mon-Fri 7am-1am, Sat & Sun 8am-2am

Phone: +33 1 47 00 34 39

Internet: <https://bistrotdupeintre.com/fr>

Email: bistrotdupeintre@gmail.com

Le Voltaire



Le Voltaire is, perhaps, amongst the best places in the 7th arrondissement to come for a quintessentially Parisian brasserie experience.

Classic French cuisine with dishes polished to perfection, woven bent-wood chairs outside, and

a chic ambience with that elusive je-ne-sais-quoi factor.

Photo: Song_about_summer/Shutterstock

Address: 27 Quai Voltaire, Paris

Opening hours: Daily noon-3:30pm / 7pm-11pm

Phone: +33 1 42 61 17 49

Internet: <https://restaurantlevoltaire.com>

L'Avant Comptoir de la Terre



No tables here — just the counter, a blackboard of small plates hanging overhead, and a crowd leaning in with glasses of wine. Opened by Chef

Yves Camdeborde in 2009, it's all about land-based bites: duck foie gras skewers, oxtail croquettes with red wine and horseradish, Corsican charcuterie. Everything's made to graze on with natural wines poured straight from the cabinet. The place is loud in a good way, the bartenders know their stuff, and it's easy to end up staying longer than planned.

Photo: Jeanette Teare/Shutterstock

Address: 3 Carrefour de l'Odéon, Paris

Public Transport: The closest Metro station is Odéon (Lines 4 and 10).

Opening hours: Daily noon-11pm

Internet: <https://camdeborde.com/en/restaurants/avant-comptoir-de-la-terre>

Pizzeria Popolare



Pizzeria Popolare is a welcoming, authentic Italian spot in Paris's 2nd arrondissement. The dining room is bright and full of chatter, with long communal tables, bottle-lined walls, and twinkling lights overhead. It's made for a good time, whether you're in a pair or part of a group

of fifteen.

The menu sticks to classic Neapolitan pizzas, loaded with top-quality ingredients: San Marzano tomatoes from Paolo Ruggiero, buffalo mozzarella from Salvatore Corso delivered fresh three times a week. Burrata, fresh pasta, and generous desserts like tiramisu round out the offerings.

Many locals and visitors swear it's one of the best pizzas in Paris, and it's easy to see why once you bite into that pillowy crust and fresh mozzarella. Arrive early or be prepared to wait — the pizza alone makes it worth it.

Photo: JustClaudio/Shutterstock

Address: 111 Rue Réaumur, Paris

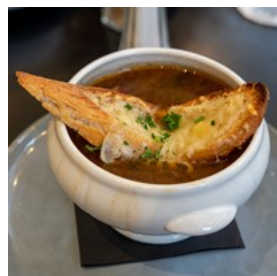
Public Transport: The closest Metro stations to Pizzeria Popolare are Grands Boulevards (Lines 8 & 9) and Bonne Nouvelle (Lines 8 & 9).

Opening hours: Mon–Fri 11:45am–2:15pm /
6:30pm–10:30pm; Sat & Sun noon–3:15pm /
6:30pm–10:45pm

Phone: +33 9 73 03 43 91

Internet: www.circolopopolare.com/fr/restaurants/pizzeriapopolare-paris

Les Antiquaires



If you're after a classic bistro meal after a visit to the Musée d'Orsay, Les Antiquaires is a solid choice. The space has serious old-school

charm—leather banquettes, vintage mirrors, a hefty wooden bar—like someone pressed pause on 1920s Paris.

The menu sticks to familiar French hits: the boeuf bourguignon and onion soup get regular praise, and desserts like brioche toast or crème brûlée rarely disappoint. It's lively rather than quiet, with a mix of museum-goers and locals,

and a timeless atmosphere worth the noise.

Photo: Ana del Castillo/Shutterstock

Address: 13 Rue du Bac, Paris

Opening hours: Daily 7am–2am

Phone: +33 1 42 61 08 36

Internet: <https://lesantiquaires.net>

Le Potager de Charlotte



Created by two brothers passionate about health, the environment, and animal rights, Le Potager de Charlotte is an intimate spot offering plant-based, gourmet cuisine made from fresh, local, seasonal, and organic produce.

From the presentation to the flavours, you can really see the time and thought they have put into each dish. Le Potager de Charlotte is the kind of restaurant where you don't have to be vegan to fully enjoy the food, so make sure to pay a visit and book ahead.

Photo: Sebastian Coman Photography/Unsplash

Address: 12 Rue Louise-Émilie de la Tour d'Auvergne, Paris

Phone: +33 1 44 65 09 63

Internet: www.lepotagerdecharlotte.fr/en

Email: contact@lepotagerdecharlotte.fr

More Info: 2nd location: 21 Rue Rennequin

Le Petit Châtelet



Le Petit Châtelet is a classic Parisian bistro nestled just across from Notre-Dame Cathedral. Its cosy atmosphere, complete with a

wood-burning fireplace, offers a warm respite from the bustling city. The restaurant features traditional French dishes such as chargrilled meats, crème brûlée, and regional specialities,

all served in generous portions. The outdoor seating provides a charming spot for people-watching along the Seine.

Photo: Adilson Sochodolak/Shutterstock
Address: 39 Rue de la Bûcherie, Paris
Opening hours: Daily noon-2:30pm / 7pm-10:50pm
Phone: +33 1 46 33 53 40
Internet: www.instagram.com/lepetitchatelet_officiel

Epicure



Epicure is tucked inside Le Bristol Paris, overlooking a quiet courtyard garden. Chef Arnaud Faye's menu is all about letting the

ingredients shine — vegetables in season take the lead, while seafood and meats are treated with the same precision and care. The wine list is extensive, designed to complement the dishes rather than steal the show. Booking ahead is a must, and the experience is less about ticking off Michelin stars and more about savouring the artistry of modern French cuisine.

Photo: Johnathan Ball/Shutterstock
Address: 112 Rue du Faubourg Saint-Honoré, Paris
Opening hours: Tue-Sat noon-1:30pm / 7:30pm-9:30pm; Sun & Mon closed
Phone: +33 1 53 43 43 40
Internet: www.oetkerhotels.com/fr/hotels/le-bristol-paris/restaurants-et-bar/epicure

Little Tokyo (Rue Sainte-Anne)



Although Japanese prevails in this aptly named Parisian neighbourhood between the 1st and 2nd arrondissements, there's plenty of Asian food to choose from — everything from Korean bibimbap to bowls of steamy

Vietnamese pho pepper the area, enjoying popularity among both locals and visitors.

Photo: Thomas Marban/Unsplash
Address: Rue Sainte-Anne, Paris
Public Transport: The closest Metro stations are Pyramides (Lines 7 and 14) and Quatre-Septembre (Line 3).
More Info: Small street between the Louvre and the Opera, next to the Palais Royal.

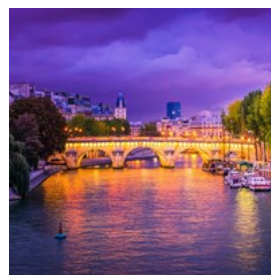
Fajitas



Classic Mexican dishes such as quesadillas, nachos, and, of course, fajitas are dished up in a colourful Mexican-style setting just a few minutes from the famous Pont Neuf.

Photo: Herson Rodriguez/Unsplash
Address: 15 Rue Dauphine, Paris
Opening hours: Tue-Sat noon-11pm, Sun & Mon closed
Phone: +33 1 46 34 44 69
Internet: www.instagram.com/fajitas_paris

Kong



Perched above the Seine in a Philippe Starck-designed glass dome, KONG offers a striking view of Parisian rooftops and the Pont

Neuf. While the fusion cuisine is inventive, it's the atmosphere that stands out — especially during evening hours when the space transforms into a lively lounge with DJs and cocktails.

Photo: Neirfy/Shutterstock
Address: 1 Rue du Pont-Neuf, Paris
Opening hours: Mon-Sat noon-2am, Sun noon-1am
Phone: +33 140 39 09 00
Internet: www.kong.fr/en

Pierre Gagnaire



Pierre Gagnaire is a Michelin three-star restaurant just off the Champs-Élysées, located within the Hôtel Balzac. It's renowned for its

innovative approach to modern French cuisine, blending traditional techniques with contemporary flair.

The menu is a journey through inventive French gastronomy, with tasting menus and à la carte options that push the boundaries of flavour. Reservations are essential, often required well in advance, especially for dinner.

Photo: lahenn/Shutterstock
Address: 6 Rue Balzac, Paris
Phone: +33 1 58 36 12 50
Internet: <https://pierregagnaire.com>

Allard



Tucked away in the 6th arrondissement, Allard has been a staple of Parisian dining since 1932. Inside, floral wallpaper, red velvet

banquettes, and vintage woodwork give it proper old-school bistro character. The menu sticks to classic French dishes, and sitting here feels like stepping back into another era of Paris.

Photo: Rawpixel.com/Shutterstock
Address: 41 Rue Saint-André des Arts, Paris
Public Transport: The closest Metro station is Saint-Germain-des-Prés (Line 4).
Phone: +33 1 43 26 48 23
Internet: www.restaurant-allard.fr

L'As du Fallafel



If you're craving Middle Eastern fare, Rue des Rosiers in the 4th arrondissement is the place to be. On and around this street, you will find many establishments serving delicious Middle-Eastern and Yiddish/Eastern European specialities. L'As du Fallafel, in particular, is known for making the most famous falafel sandwich in Paris. It's a no-frills, little eatery serving besides falafels, shawarma and kebabs, plus Israeli wines.

Photo: uniuqeton/Shutterstock
Address: 34 Rue des Rosiers, Paris
Public Transport: The closest Métro stations to L'As du Fallafel are Saint-Paul (Line 1) and Hôtel de Ville (Lines 1 & 11).
Opening hours: Sun-Thu 11am-11:30pm, Fri 11am-5pm, Sat closed
Phone: +33 1 48 87 63 60
Internet: www.instagram.com/lasdufallafel

Roomies Etienne Marcel



Hamburgers might not be the first thing that comes to mind when thinking about dining in Paris, but Roomies will make you rethink that. Here, you can customise your own burger with their homemade sauces and fresh ingredients. The friendly staff will gladly guide you through the process in good English. At just a 10-minute walk from Notre Dame, it is well worth a visit.

Photo: NatashaPhoto/Shutterstock
Address: 14 Rue du Cygne, Paris
Opening hours: Mon-Sat noon-2:30pm / 7:30pm-10:30pm; Sun noon-3pm
Phone: +33 1 42 60 30 11
Internet: <https://roomiesburger.fr>

La Maison de Verlaine



La Maison de Verlaine occupies the poet's former home and still feels like a step back in time. The small, family-run spot serves classic French dishes—escargots, duck breast, tarte tatin—and has a handful of outdoor tables where you can soak up the quiet street life.

Photo: Sham Clicks/Shutterstock
Address: 39 Rue Descartes, Paris
Phone: +33 1 43 26 39 15

Rouge Bis



Just a stone's throw from the legendary Moulin Rouge, Rouge Bis is a popular brasserie offering a delicious glimpse into traditional French cuisine, with dishes such as onion soup, duck confit, beef bourguignon, and escargots. The interior has a lively bistro feel, and if you grab a seat near the window, you get a glimpse of Montmartre life and the cabaret just outside.

Photo: Stepanek Photography/Shutterstock
Address: 2 Rue de Bruxelles, Paris
Public Transport: The closest Metro station is Blanche (Line 2).
Opening hours: Mon-Fri 8am-2am, Sat & Sun 8am-1am
Phone: +33 1 40 16 45 36
Internet: www.instagram.com/rougebisparis

Boutique yam'Tcha



This cosy counter-style outpost from Chef Adeline Grattard feels like a calm hideaway tucked amid the buzz of Les Halles. Instead of a

full restaurant service, it's a stand-up boutique where you can grab her signature bao buns or congee served alongside carefully matched Asian teas — her husband, Chi Wah Chan, curates the pairings. It carries the quiet precision of Yam'Tcha's Michelin-starred menu, just in snack form.

Photo: abhimages/Shutterstock
Address: 4 Rue Sauval, Paris
Public Transport: The closest Metro station is Louvre-Rivoli (Line 1).
Phone: +33 1 40 26 06 06
Internet: www.yamtcha.com

Founti Agadir



A reliable spot for Moroccan food on the Left Bank, Founti Agadir serves up couscous, tajines, and pastilla with straightforward, honest flavours. The dining room is simple and relaxed, and it's popular with both locals and visitors looking for a hearty North African meal.

Photo: Carmen Romero 23/Shutterstock
Address: 117 Rue Monge, Paris
Public Transport: The closest Metro station is Odéon (Lines 4 and 10).
Opening hours: Tue-Sat noon-2:30pm / 7pm-11pm; Sun noon-2:30pm, Mon closed
Phone: +33 1 43 37 85 10

CAFÉS



Ekaterina Pokrovsky/Shutterstock

Fresh baguettes and buttery croissants with a strong espresso in the morning, aromatic tea or a light café au lait in the afternoon, and a glass of local wine with friends in the evening—there's never a wrong time to visit a café in Paris. Cafés are a quintessential part of the Parisian experience and the perfect spot for a lazy afternoon of people-watching. Add in a wide variety of drinks and the occasional live music, and the café experience is complete.

Café de Flore



Café de Flore is the literary heart of Saint-Germain-des-Prés, where the ghosts of Simone de Beauvoir, Jean-Paul Sartre, and Albert Camus still linger over the coffee cups. It's touristy and always bustling, but there's a reason it's famous — the history, the vibe, the people-watching. Even if you're jostling for a table, sipping a café crème here feels like a rite of passage in Paris.

Photo: Ekaterina Pokrovsky/Shutterstock
Address: 172 Boulevard Saint-Germain, Paris
Opening hours: Daily 7:30am-2am
Phone: +33 1 45 48 55 26
Internet: <https://cafedeflore.fr>

Ladurée



La Maison Ladurée is an iconic, upscale bakery and tea room specialising in French macarons in a variety of flavours. At this location in the heart of Saint-Germain-des-Prés, you can indulge in scrumptious French pastries and true culinary masterpieces fit for royals. Be sure to take some of these decadent desserts back home, as they do make a nice gift.

Photo: Melanie Kreutz/Unsplash
Address: 21 Rue Bonaparte, Paris
Opening hours: Daily 8:30am-7:30pm
Phone: +33 1 44 07 64 87
Internet: www.laduree.fr
Email: contact@laduree.com
More Info: 2nd location: 75 Avenue des Champs-Élysées, Paris

Angelina



Angelina has been enchanting Parisians and visitors alike since 1903 — a tea room where every corner hints at history. The real star is the famously rich 'chocolat chaud l'Africain', a hot chocolate served with a pot of whipped cream on the side, while the Mont-Blanc pastry has earned its own devoted following. Angelina is undeniably elegant — and priced accordingly — but for many, savouring that hot chocolate here is a Paris ritual worth every euro.

Photo: petereleven/Shutterstock
Address: 226 Rue de Rivoli, Paris
Opening hours: Mon-Thu 7:30am-7pm, Fri-Sun 8am-7:30pm
Phone: +33 1 42 60 82 00
Internet: www.angelina-paris.fr/adresses/paris-rivoli

Bon Bouquet Café



A burst of Bali in the heart of Paris's 9th arrondissement, Bon Bouquet Café is a hip, quaint hangout offering a cosy tropical cocoon

where brunch feels like a mini-vacation. The menu is a colourful mix of fresh, homemade dishes with an exotic twist: fluffy pancakes with mascarpone and coconut, açai bowls, and avocado toast topped with a coconut curry hollandaise.

Photo: niksdope/Shutterstock

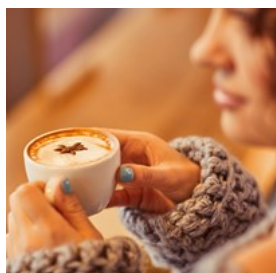
Address: 30 Rue Le Peletier, Paris

Opening hours: Daily 9am-5pm

Phone: +33 9 71 07 94 35

Internet: www.instagram.com/bonbouquet.fr

Le Select



Le Select has been holding court in Montparnasse since 1925, a smoky haunt once favoured by Hemingway, Picasso, and Henry

Miller. Its 1920s interior — stucco, mouldings, wooden tables, and red banquettes — hasn't lost its chic, and it still hums with an authentic Parisian rhythm. The menu sticks to brasserie comfort: steak tartare, roasted farm chicken, baba au rhum. Prices reflect its fame, but lingering over a coffee or cocktail here is as much about soaking in the history as it is about the food.

Photo: IAKOBCHUK VIACHESLAV/Shutterstock

Address: 99 Boulevard du Montparnasse, Paris

Opening hours: Sun-Thu 7am-2am, Fri & Sat 7am-3am

Phone: +33 1 45 48 38 24

Internet: www.leselectmontparnasse.fr/en/

Breizh Café



Breizh Café is a Japanese import that has become one of Paris's most beloved crêperies.

Founded by Breton native Bertrand Larcher, who lived in Japan, the café blends the best of Brittany with Japanese culinary influences. The Marais location offers a cosy atmosphere with communal seating and a menu featuring organic buckwheat galettes and sweet crêpes made with high-quality ingredients like Maison Bordier butter and Comté cheese. Chef Raphaël-Fumio Kudaka, who also leads the Michelin-starred La Table Breizh Café in Cancale, brings his expertise to the Parisian outpost. Reservations are recommended.

Photo: N K/Shutterstock

Address: 109 Rue Vieille du Temple, Paris

Opening hours: Daily 9am-11pm

Phone: +33 1 42 72 13 77

Internet: www.instagram.com/breizhcafe_fr

Email: izhcafe.fr

Charbon Café



Café Charbon has been part of Rue Oberkampf since 1863, one of those old cafés-charbons run by Auvergne artisans who sold coffee, wine, and

coal (charbon in French). Inside, the zinc-and-wood bar, high ceilings, red benches, and worn mirrors give off an authentic, turn-of-the-century vibe. By day, it's mellow and unpretentious; by night, the DJ turns up the tunes, the crowd thickens, and it easily becomes part of Oberkampf's livelier side.

Photo: Fotyma/Shutterstock

Address: 109 Rue Oberkampf, Paris
Opening hours: Daily 8am-2am
Phone: +33 1 43 57 55 13
Internet: www.cafecharbonoberkampf.fr

Café de la Paix



Café de la Paix has been a Paris institution since 1862, sharing its architect — and its sense of grandeur — with the neighbouring Opéra

Garnier. The interiors, all gilded mouldings and high ceilings in the Napoléon III style, have been carefully restored, with a touch of modern warmth. Outside, the terrace offers a front-row seat to the bustle of the Opéra district. Whether you're here for brunch, coffee and pastries, or a full French meal, it's a place where a little glamour is part of the experience.

Photo: Monkey Business Images/Shutterstock
Address: 5 Place de l'Opéra, Paris
Phone: +33 1 40 07 36 36
Internet: www.cafedelapaix.fr/fr
Email: cafedelapaixparis@ihg.com

KB CaféShop



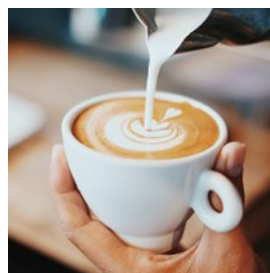
KB CaféShop was one of the early movers in Paris's speciality coffee scene, and it still draws a loyal crowd to its corner spot in South Pigalle.

Beans are roasted in-house from producers around the world, and the results shine in both espresso-based drinks and slow brews. The food is simple but fresh — baguette sandwiches, salads, and homemade cakes, muffins, and tarts — making it a popular stop for breakfast or a light lunch.

Photo: Nathan Dumlao/Unsplash

Address: 53 Avenue Trudaine, paris
Opening hours: Mon-Fri 7:45am-6:30pm, Sat & Sun 9am-6:30pm
Phone: +33 1 56 92 12 41
Internet: <https://kbcoffeeroasters.com>

Strada Café



A favourite among locals and students, Strada Café offers a cosy retreat in the heart of Paris's 5th arrondissement.

Breakfast and brunch are the main draws here — simple, fresh, well-made dishes, including a fluffy goat cheese omelette and French toast topped with passionfruit, coconut cream, and pomegranate. Coffee lovers will appreciate carefully brewed cappuccinos and single-origin espresso. Weekends can be busy, so plan ahead if you want a table — or come just to sip and watch the Latin Quarter go by.

Photo: Fahmi Fakhruhin/Unsplash
Address: 24 Rue Monge, Paris
Internet: <https://stradacafe.fr>
Email: contact@stradacafe.fr

BARS & NIGHTLIFE



Léonard Cotte/Unsplash

Paris after dark is a city that comes alive in layers. Rooftops, courtyards, and vaulted cellars all pulse with energy, offering a mix of experiences from intimate wine bars and

speakeasies to brasseries and lively clubs. Each arrondissement has its own character: whether it's a cobblestoned street buzzing with locals or a tucked-away cellar with live music, there's a corner of Paris nightlife for every mood.

Harry's New York Bar



Just 24 years younger than the Eiffel Tower, Harry's New York Bar is as much a Paris landmark as the big metal one.

Hidden on a quiet street between the Opéra Garnier and Place Vendôme, it has been serving classic cocktails since 1911. The mahogany bar, dark woodwork, stained-glass windows, and tin ceiling—imported from New York before Prohibition—have all been carefully preserved, while the walls display university banners and banknotes collected by generations of patrons.

Step inside and you're transported to a bygone era, complete with stylishly dressed bartenders and an intimate piano bar in the cellar. This is where legends were born: the Bloody Mary (allegedly made for Ernest Hemingway), the Sidecar, and the French 75. Over the decades, Harry's has welcomed Coco Chanel, Humphrey Bogart, and Ian Fleming, whose 'Sank Roo Doe Noo' instructions for James Bond are inscribed on the large mirror behind the bar. Today, the menu still mixes timeless classics with contemporary additions, offering cocktails that honour its legendary past while staying inventive.

Photo: Kayla Enright/Shutterstock

Address: 5 Rue Daunou, Paris

Opening hours: Daily 6pm-1am

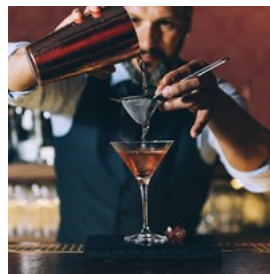
Phone: +33 1 42 61 71 14

Internet: www.harrysbar.com/en/harrys-bar-traditionally-inve

ntive-since-1911

Email: contact@harrys-bar.fr

Little Red Door



Hidden behind a signature crimson door in the Marais, Little Red Door is one of Paris's most inventive speakeasies. Step inside

to find an intimate space of exposed brick, flickering candles, and furniture imported from London. Drinks are crafted using a Farm-to-Glass approach, transforming fresh, local ingredients into unique cocktails. Since 2012, this approach has made Little Red Door a mainstay on the World's 50 Best Bars list.

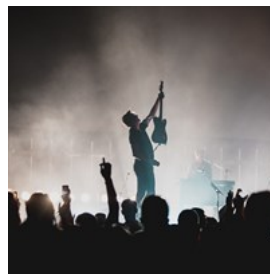
Photo: santypan/Shutterstock

Address: 60 Rue Charlot, Paris

Opening hours: Daily 5pm-2am

Internet: www.lrdparis.com

Supersonic



Tucked just off Bastille, Supersonic is an intimate music venue and bar that has become a go-to for indie and alternative rock since opening in 2016.

The space, reminiscent of a New York loft with a mezzanine overlooking the stage, hosts live bands ranging from guitar-driven indie to synthwave, punk, garage, and psych pop. Gigs are often free before midnight, and by 1 am, Supersonic transforms into a dance-friendly club pulsing with energy.

Photo: Spencer Davis/Unsplash

Address: 9 Rue Biscornet, Paris

Phone: +33 1 49 23 41 90

Internet: <https://supersonic-club.fr>

Email: contact@supersonic-club.fr

Point Éphémère



Point Éphémère is a dynamic cultural centre that puts together a rich program of exhibitions, concerts, and performances in a large riverside space that also includes a bar and restaurant.

Photo: Andrei Armiagov/Shutterstock
Address: 200 Quai de Valmy, Paris
Phone: +33 9 50 63 40 07
Internet: www.pointephemere.org
Email: info@pointephemere.org

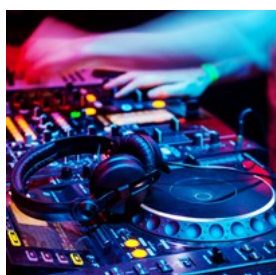
Le 10 Bar



Le 10 Bar is a quaint little bar near the Palais du Luxembourg, popular for its homemade sangria. Take a seat at one of its street-facing tables or grab a chair in its rustic and characterful interior, decorated with old posters.

Photo: Frames For Your Heart/Unsplash
Address: 10 Rue de l'Odéon, Paris
Opening hours: Sun & Mon 5pm-midnight, Tue & Wed 5pm-1am, Thu-Sat 5pm-2am
Phone: +33 9 82 43 55 77
Internet: <https://le10bar.com>

Rex Club



Rex Club is a cornerstone of Parisian nightlife, legendary for its dedication to electronic music since the 1990s. The club has hosted internationally acclaimed DJs and remains a hub for dance music enthusiasts. With its cutting-edge sound system, packed dance floor,

and electric atmosphere, Rex Club continues to define the city's underground club scene.

Photo: Maxim Blinkov/Shutterstock
Address: 5 Boulevard Poissonnière, Paris
Phone: +33 1 42 36 10 96
Internet: <https://rexclub.com>

Le Syndicat



Tucked behind a graffiti-covered façade in Paris's 10th arrondissement, Le Syndicat is a speakeasy with an urban, hip-hop-infused vibe. Since 2014, it has been shaking up the local scene with inventive cocktails that champion French spirits, all served in a dimly lit, industrial setting.

Menus change seasonally, highlighting local ingredients and unexpected flavour pairings. From bright, herbaceous blends to daring combinations featuring Calvados, Armagnac, or lavender, each drink feels playful, creative, and unmistakably French.

Photo: Kondor83/Shutterstock
Address: 51 Rue du Faubourg Saint-Denis, Paris
Opening hours: Daily 6:30pm-2am
Internet: <https://domainesyndicat.com>

Buddha-Bar



Just off Place de la Concorde in the 8th arrondissement, Buddha-Bar feels like a cinematic escape—three levels wrapped around a four-metre Buddha, bathed in soft lighting, rich mahogany, and intricate Asian art. A dragon-shaped mezzanine bar curls above the floor, offering a perch for cocktails under

candlelight.

The menu blends Pacific-Rim influences — Asian, Hawaiian, Californian, and European — with dishes designed for sharing and presentation, from sushi and duck to creative small plates. When the sun sets, the space shifts into a lounge as resident DJs spin ethno-house and downtempo beats, carrying the Buddha-Bar brand's signature music style.

Photo: Nykonchuk Oleksii/Shutterstock

Address: 8-12 Rue Boissy d'Anglas, Paris

Opening hours: Mon-Sat 6pm-2am, Sun 11am-4pm / 6pm-2am

Phone: +33 1 53 05 90 00

Internet: www.buddhabar.com

Email: buddhabar@buddhabar.com

Aux Folies



Aux Folies has been part of Rue de Belleville's fabric for generations — a place where Paris's working-class past and multicultural present

meet over drinks. Once linked to the old Folies-Belleville café-théâtre, stage to Édith Piaf and Maurice Chevalier, it now feels more like a neighbourhood living room with neon lights, a graffitied interior, and a sprawling terrace. By day, locals and students linger over coffee, mint tea, or a petit jaune; by night, the atmosphere shifts as the terrace fills with chatter in French, Arabic, Mandarin, and more. A front-row seat to Belleville's street life, best enjoyed with a cold beer and no fixed plans.

Photo: Gorodisskij/Shutterstock

Address: 8 Rue de Belleville, Paris

Opening hours: Daily 7am-2am

Phone: +33 1 88 40 18 00

Internet: <https://auxfolies.shop>

Nouveau Casino



Nestled in the 11th arrondissement, Nouveau Casino is a cornerstone of Paris's nightlife, where music and revelry run late into the night. The

ground floor hosts a lively bar, while upstairs, a medium-sized dance hall pulses with beats ranging from electronic to indie. Its true distinction lies in being a prime location for small concerts, showcasing a penchant for underground music.

Photo: glazok90/Shutterstock

Address: 109 Rue Oberkampf, Paris

Phone: +33 1 43 57 57 40

Internet: www.nouveaucasino.fr

Email: contact@nouveaucasino.fr

Le Truskel



At the heart of Paris's 2nd arrondissement, Le Truskel has been a rock institution for over 20 years. Early evening sees live concerts and

underground music discoveries, while sports fans gather to catch major matches. As night falls, DJs spin indie pop, rock, punk, and electro-pop, transforming the space into a lively micro club.

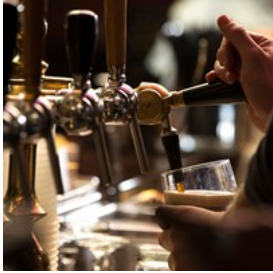
Photo: Africa Studio/Shutterstock

Address: 12 Rue Feydeau, Paris

Phone: +33 1 40 26 57 42

Internet: www.truskel.fr

Galway Irish Pub



Galway Irish Pub brings a touch of Ireland to Paris's 9th arrondissement, complete with a wide selection of draft beers, hearty pub grub, and live

music sessions. Sports fans can catch the latest matches on big screens, while the friendly atmosphere ensures plenty of laughter, storytelling, and genuine 'craic'.

Photo: IsabellaO/Shutterstock

Address: 13 Quai des Grands Augustins, Paris

Opening hours: Sun-Thu noon-2am, Fri & Sat noon-5am

Phone: +33 1 43 29 64 50

Internet: <https://galwayirishpub.fr>

SHOPPING



javi_indy/Shutterstock

Paris is a city where shopping feels like an art form. In the Golden Triangle — the prestigious patch between Avenue Montaigne, Avenue George V, and the Champs-Élysées — haute couture houses tempt you with windows as polished as the jewellery inside.

At the other end of the style spectrum, the bohemian streets of Le Marais are lined with vintage shops, concept stores, and indie designers that cater to every taste and budget. Rue Saint-Honoré serves up cutting-edge luxury, while the creative pockets around Canal

Saint-Martin offer hip boutiques and independent labels with a relaxed, local vibe. For something lively and central, Rue de Rivoli is packed with international brands and souvenir stops, all within strolling distance of major landmarks.

Over in Saint-Germain-des-Prés, chic fashion sits alongside art bookshops and legendary cafés, perfect for people-watching between purchases. And, of course, Paris's grand department stores aren't just places to shop — they're destinations in themselves, with stained-glass domes, rooftop views, and the kind of window displays that could make you fall in love with a handbag you never knew you needed.

Galleries Lafayette



Galleries Lafayette is an upscale French department store chain with more than 50 locations in France as well as in Dubai, Beijing, Shanghai and Doha. Its flagship store on Boulevard Haussmann is a Paris institution, and its art nouveau glass dome alone is a showstopper. Alongside the big names in fashion and cosmetics, you'll find Europe's largest men's department, a contemporary art gallery, plenty of cafés, and a rooftop terrace with one of the best free views in the city.

Photo: Vladislav Gurfinkel/Shutterstock

Address: 40 Boulevard Haussmann, Paris

Public Transport: The closest Metro stations are Chaussée d'Antin - La Fayette (Lines 7 and 9), Opéra (Lines 3, 7, and 8), and Trinité - d'Estienne d'Orves (Line 12).

Opening hours: Mon-Sat 10am-8:30pm, Sun 11am-8pm

Phone: +33 1 42 82 34 56

Internet: <https://haussmann.gallerieslafayette.com/en>

Le Bon Marché



Le Bon Marché has been around since 1838 and claims the title of the world's first department store. Designer apparel for men and women, cosmetics, accessories, jewellery, and housewares comprise the major departments. The real treat is La Grande Épicerie, the store's legendary food hall — worth a stop even if you're not planning to shop.

Photo: Creative Lab/Shutterstock

Address: 24 Rue de Sèvres, Paris

Public Transport: The closest Metro stations are Sèvres - Babylone (Lines 10 and 12) and Vaneau (Line 10).

Opening hours: Mon-Sat 10am-7:45pm, Sun 11am-7:45pm

Phone: +33 1 44 39 80 00

Internet: www.lebonmarche.com/fr

Rue Mouffetard Market



One of Paris's liveliest market streets, Rue Mouffetard is a must-visit for food lovers. Open Tuesday to Sunday, you'll find fresh produce, cheese, meat, seafood, chocolate, baked goods, and more. The southern end is packed with stalls, while the rest of the street is lined with shops and cafés. It's a real foodie's paradise.

Photo: StephOx/Shutterstock

Address: 139 Rue Mouffetard, Paris

Public Transport: The closest Metro station is Place Monge on Line 7.

Opening hours: Tue-Sun 8am-1pm, Mon closed

Internet: www.rue-mouffetard.com/market

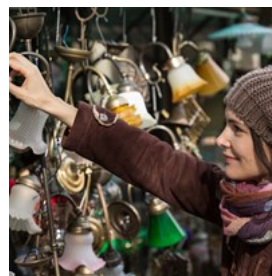
The Bouquinistes Along the Seine



One of the most charming ways to spend time in Paris is wandering along the Seine, where the Bouquinistes set up their iconic green stalls. These book sellers offer everything from secondhand books and vintage posters to antiques and quirky souvenirs. The rows of stalls hugging the riverbank create a nostalgic vibe that's hard to find anywhere else — perfect for book lovers and anyone who enjoys hunting for unique finds right in the heart of the city.

Photo: Ekaterina Pokrovsky/Shutterstock

Saint-Ouen Flea Market



Just outside Paris, the Marché aux Puces de Saint-Ouen is the city's most famous flea market. One of the largest in the world, it sprawls across a maze of stalls and covered markets where you'll find everything from antique furniture and vintage fashion to art, curiosities, and quirky collectables — a heady mix of history, style, and serendipitous finds you won't get anywhere else in the city.

Photo: Rishiken/Shutterstock

Address: 110 Rue des Rosiers, Saint-Ouen-sur-Seine

Public Transport: The closest Metro station is Porte de Clignancourt (Line 4).

Internet: www.pucesdeparissaintouen.com

Shakespeare and Company



Shakespeare and Company can feel a bit cramped these days, thanks to the steady stream of tourists squeezing into the tiny shop, but it's still absolutely worth a visit. Above the reading room entrance, the words 'Be Not Inhospitable to Strangers Lest They Be Angels in Disguise' capture the spirit here, alongside its founding motto: 'Give what you can; take what you need.'

Since opening in 1951, this legendary bookshop has hosted young writers and artists in exchange for help around the shop, with an estimated 30,000 people spending nights on beds tucked between the bookshelves. You don't have to stay overnight to soak in the atmosphere; the welcoming public reading room is a quiet oasis amid the city's buzz. In 2016, the shop published its own history, with contributions from the likes of Allen Ginsberg, Jim Morrison, and Ethan Hawke.

Photo: mana5280/Unsplash

Address: 37 Rue de la Bûcherie, Paris

Opening hours: Mon-Wed 10am-8pm, Thu-Sat 10am-9pm, Sun noon-7pm

Phone: +33 1 43 25 40 93

Internet: www.shakespeareandcompany.com

Email: info@shakespeareandcompany.com

Printemps Haussmann



Printemps is a significant player in Paris shopping — a bit quieter than its rival, Galeries Lafayette, but just as impressive, especially if you're into fashion and beauty. It's got seven floors packed

with everything from everyday brands to high-end names like Gucci and Chanel. Just like Galeries Lafayette, don't miss the top floor: the stained-glass dome is stunning, and there's a café where you can enjoy one of the best views over Paris — no ticket needed.

Photo: Ground Picture/Shutterstock

Address: 64 Boulevard Hausmann, Paris

Phone: +33 1 71 25 26 01

Internet: www.printemps.com/fr/fr

Champs-Élysées



Champs-Élysées is a charming and historic thoroughfare, famous worldwide for its upscale shopping options. The long avenue is lined with a mix of high-end and flagship stores from renowned French and international brands. You'll find Cartier, Dior, Guerlain, and Louis Vuitton, along with malls like Galeries Lafayette Champs-Élysées and Galerie des Champs. For something more casual, there's Zara and a large Sephora for beauty lovers.

But Champs-Élysées isn't just about shopping — cafés, theatres, and a buzzing atmosphere make it a classic Paris experience.

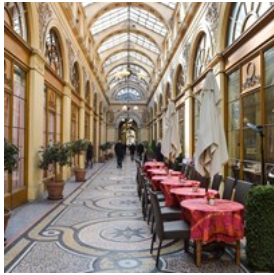
Photo: Ariwasabi/Shutterstock

Address: Champs-Élysées

Public Transport: The closest Metro stations to

Champs-Élysées are Charles de Gaulle-Étoile (Lines 1, 2, 6) and Franklin D. Roosevelt (Lines 1, 9).

Galerie Vivienne



Opened in 1823 and listed as a historic monument since 1974, Galerie Vivienne is one of Paris's most charming covered passages. Tucked away in the quiet 2nd arrondissement near the Palais Royal, it's famous for its beautiful neoclassical décor, colourful mosaic floors, and a glass roof that floods the space with natural light. It's home to a mix of refined shops: stylish boutiques, bookshops, wine cellars, tea rooms, and classic Parisian restaurants.

Photo: FreeProd33/Shutterstock

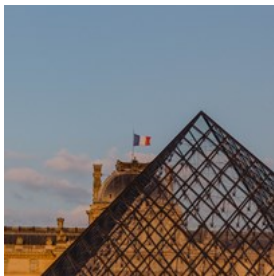
Address: 4 Rue des Petits Champs, Paris

Public Transport: The closest Metro stations to Galerie Vivienne are Bourse (Line 3) and Grands Boulevards (Lines 8 and 9).

Opening hours: Daily 8:30am-8pm

Internet: www.galerie-vivienne.com

Carrousel du Louvre



Located beneath the iconic Louvre Museum, the Carrousel du Louvre offers a unique and sophisticated shopping experience in the heart of Paris. You'll find a diverse range of boutiques and shops, showcasing a blend of high-end French and international brands, from fashion and jewellery to beauty products and gifts. It's also home to the inverted glass pyramid made famous by The Da Vinci Code.

Photo: mateuscastr7/Shutterstock

Address: 99 Rue de Rivoli, Paris

Public Transport: The closest Metro station to Carrousel du Louvre is Palais Royal-Musée du Louvre (Lines 1 and 7).

Phone: +33 143 16 47 10

Internet: www.westfield.com/fr/france/carrouseldulouvre

Westfield Forum des Halles



Located in the heart of Paris between the Louvre and Notre Dame, Westfield Forum des Halles is a vast underground shopping centre on the former site of the historic Les Halles market. It offers a diverse range of trendy shops, international brands, and independent boutiques. Beyond shopping, visitors can catch a movie, dine at various restaurants and bars, or explore nearby streets, such as Rue Montorgueil, known for its bustling food markets and cafés, and Rue Quincampoix, home to quirky boutiques and art galleries.

Photo: Bobex-73/Shutterstock

Address: 101 Porte Berger, Paris

Public Transport: The closest Metro stations are Châtelet-Les Halles (Lines 1, 4, 7, 11, 14) and Les Halles (RER A, B, D).

Opening hours: Daily 10am-8:30pm

Phone: +33 1 44 76 87 08

Internet: www.westfield.com/fr/france/forumdeshalles

Souffle Continu



Souffle Continu is an independent record store, near the legendary Père-Lachaise Cemetery, stocking up on new releases as well as a vast and eclectic collection of re-releases on vinyl, DVDs, and CDs.

Photo: Alex King Pics/Shutterstock

Address: 22 Rue Gerbier, Paris

Opening hours: Mon-Fri 11am-7pm, Sat 11am-8pm, Sun closed

Phone: +33 1 40 24 17 21

Internet: www.soufflecontinu.com

Artazart



On the banks of the Canal Saint-Martin, Artazart combines Paris's love of books with its passion for design. It is a palace of coffee-table tomes, with everything from fashion and photography to illustrations and children's books. The small art gallery section also showcases works by local talents.

Photo: LStockStudio/Shutterstock

Address: 83 Quai de Valmy, Paris

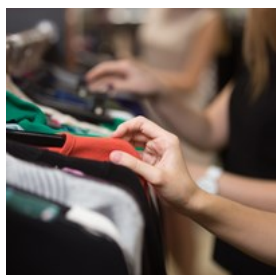
Opening hours: Daily 10:30am-7:30pm

Phone: +33 1 40 40 24 00

Internet: <https://artazart.com/en>

Email: info@artazart.com

La Vallée Village



La Vallée Village is an outdoor shopping centre about 35 minutes east of Paris and just five minutes from Disneyland. It's home to over 100 outlet boutiques offering luxury and premium brands, with discounts all year round — perfect if you want designer labels without the usual price tag.

Photo: fizkes/Shutterstock

Address: 3 Cours de La Garonne, Serris

Opening hours: Daily 10am-8:30pm

Phone: +33 1 60 42 35 00

Internet: www.thebicestercollection.com/la-vallee-village/fr/

La Maison du Chocolat



La Maison du Chocolat is a Paris-based chocolatier known for its high-quality chocolates and elegant treats — their gift boxes make perfect souvenirs. Everything is carefully handmade, from the rich chocolates to delicate macarons and mouth-watering pastries like éclairs.

Photo: stockcreations/Shutterstock

Address: 225 Rue du Faubourg Saint-Honoré, Paris

Public Transport: The closest Metro station is Ternes (Line 2).

Opening hours: Mon-Sat 10am-7pm, Sun closed

Phone: +33 1 42 27 39 44

Internet: www.lamaisonduchocolat.com/en_fr

Goldymama



Paris is a goldmine for vintage clothing, but if you can only hit one spot, make it Goldymama. This small boutique is packed with well-preserved items from yesteryear, making it the perfect place to shop for 1950s skirts and suits, or indeed, the wacky 1970s shirts you have always wanted. If you are looking for truly unique gifts, look no further.

Photo: ChiccoDodiFC/Shutterstock

Address: 99 Rue Orfila, Paris

Opening hours: Tue-Sat 11am-7:30pm, Sun & Mon closed

Phone: +33 1 40 30 08 00

Internet: www.instagram.com/goldymamavintage

Album Comics



Album Comics is the king of comic shops in Paris, stocking everything from American DC and Marvel titles to popular Japanese manga and beloved

French BD. They also carry all sorts of geeky merchandise, and you might catch book signings or spot collectable limited-edition items while you're there.

Photo: Miika Laaksonen/Unsplash

Address: 67 Boulevard Saint-Germain, Paris

Public Transport: The closest Metro stations to Album Comics are Réaumur-Sébastopol (Lines 3, 4) and Arts et Métiers (Lines 3, 11).

Opening hours: Mon-Sat 10am-8pm, Sun 11am-7pm

Phone: +33 1 53 10 00 60

Internet: www.albumcomics.com/en

TOURIST INFORMATION



Song_about_summer/Shutterstock.com

Passport/Visa



Citizens of the European Union (EU) and European Economic Area (EEA) countries do not need a visa to enter France, only a valid ID. Many other

countries, including the United Kingdom, the United States, Canada, the United Arab

Emirates, Australia, and New Zealand, benefit from visa-free entry for short stays of up to 90 days within a 180-day period.

Visitors from visa-exempt countries must hold a valid passport and, starting in late 2025, will need to apply for an ETIAS (European Travel Information and Authorisation System) authorisation online before travelling.

For those requiring a visa, such as travellers from some Middle Eastern, African or Asian nations, a Schengen visa must be obtained prior to arrival. All travellers should ensure their passport is valid for at least three months beyond their intended stay.

Photo: ConvertKit/unsplash

Paris Charles de Gaulle Airport (CDG)



Paris Charles de Gaulle Airport (CDG), also known as Roissy Airport, is the largest airport in France and the main international gateway to

Paris, located about 34 km northeast of the city. One of the fastest ways to reach central Paris from CDG is the RER B train, which connects the airport to major stations such as Gare du Nord, Châtelet-Les-Halles, and Denfert-Rochereau. Trains run every 10-15 minutes, with a journey of roughly 30-40 minutes. The RoissyBus shuttle offers a direct route to the Paris-Opéra area, with frequent departures and a travel time of about an hour, depending on traffic. For those taking taxis, official vehicles can be found at designated ranks outside the terminals and are clearly identifiable by a taxi sign; passengers are advised to avoid accepting rides from drivers inside the terminal to prevent scams.

Photo: ImYanis/Shutterstock

Address: Paris Charles de Gaulle Airport

Internet: www.parisaeroport.fr/en/passengers/charles-de-gaulle-airport

Paris Orly Airport (ORY)



Paris Orly Airport (ORY) is located about 13 km south of Paris and is the second-largest airport serving the French capital. Travellers can

reach central Paris via several options. The Orlyval light rail connects the airport to Antony station in about 6–8 minutes, where passengers can transfer to the RER B train for direct access to the city centre, with a total journey time of roughly 30–35 minutes. The OrlyBus provides a direct service to Denfert-Rochereau in the 14th arrondissement, taking approximately 25–30 minutes depending on traffic.

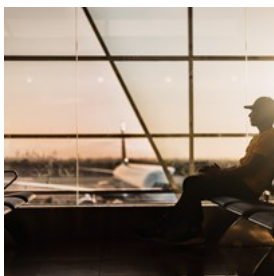
Taxis are also available, with rides typically lasting 30–40 minutes, though peak traffic can extend this time. Finally, the T7 tram links the airport to Villejuif-Louis Aragon station on Metro Line 7, offering a more economical route, though the full trip into central Paris is longer than other options.

Photo: Artur Tumasjan/Unsplash

Address: Paris Orly Airport

Internet: www.parisaeroport.fr/en/passengers/orly-airport

Paris Beauvais Airport (BVA)



Paris Beauvais Airport (BVA) primarily serves low-cost airlines. The official shuttle service connects the airport to Paris-Porte Maillot's

Pershing car park, with a journey time of

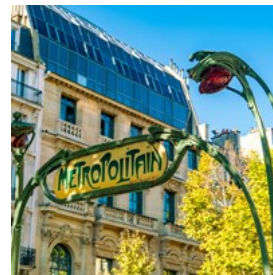
approximately 1 hour and 15 minutes, depending on traffic. Shuttles are scheduled to align with flight arrivals. Upon arrival at Porte Maillot, passengers have access to Metro Line 1 and RER Line C, facilitating easy connections to central Paris.

Photo: Marco López/Unsplash

Address: Paris Beauvais Airport

Internet: www.aeroportparisbeauvais.com/en/passengers

Public Transport



Paris has an extensive and efficient public transport network operated by the RATP, including the metro, RER trains, buses, trams, and the Montmartre funicular. The metro, with 16 lines and over 300 stations, is a fast and economical way to get around the city, running daily from about 5:30 am to midnight on weekdays and until around 1:45 am at weekends. Buses and trams cover areas not served by the metro, with many lines operating seven days a week, while the Noctilien night buses run between 12:30 am and 5:30 am.

For travellers planning multiple journeys, the Paris Visite pass offers unlimited travel on all public transport for 1, 2, 3, or 5 consecutive days, including trips to airports, Versailles, and Disneyland Paris, making it a convenient and cost-effective option for exploring the city.

Photo: Cavan-Images/Shutterstock

Internet: www.ratp.fr/en

Taxi



Taxis are readily available throughout Paris, and you can hail one on the street, though it is often more reliable to use designated taxi stands, particularly

during busy periods such as Friday and Saturday evenings. For added convenience, the popular G7 app allows you to book a taxi in advance, track it in real time, and pay directly through the app. Ride-sharing services such as Uber also operate in Paris, offering an alternative to traditional taxis.

Photo: Diego Fernandez/Unsplash

Frequently Asked Questions About Paris (FAQs)



- What is the best time to visit Paris? As one of the most visited cities in the world, it is safe to say that there is never really a bad time to visit the

French capital. The weather is best in summer, but crowds are by far the biggest. Autumn is also highly recommended for its pleasant weather, smaller crowds, and stunning foliage. Having said that, the best time to visit Paris is from June to October.

- How many days do you need in Paris?

In order for you to visit the main sights and attractions in Paris, walk around the city and explore its characterful arrondissements, you will need from 4 to 5 days.

- Is Paris dangerous?

Despite being a major European capital and one

of the most visited cities in the world, Paris is a fairly safe city for travellers. However, as with most main tourist destinations, pickpocketing is the biggest concern here. So, be careful with your belongings when taking public transport and around the city's main attractions.

- Is Paris expensive?

Yes, Paris is one of the most expensive cities in the world, especially when it comes to hotels. Average spending in the City of Light is high, not only when compared to other cities, but also to other European cities.

Photo: Emily Morter/Unsplash

Post



In Paris, most post offices are open Monday to Friday from around 8:30 am to 6 pm. On Saturdays, many offices operate until early afternoon, typically closing by 1 pm, while most are closed on Sundays.

For travellers looking to post mail internationally or access a full range of postal services, the main post office in the city is La Poste - Paris Louvre, one of the few with extended hours, including Sundays. It offers services such as sending and receiving domestic and international mail and parcels, buying stamps and philatelic items, carrying out automated banking transactions, and using self-service kiosks for quick postal tasks.

Photo: Ali Bakhtiari/Unsplash

Address: 50 Rue du Louvre, Paris

Opening hours: Mon-Sat 8:30am-10pm Sun 10am-10pm

Phone: +33 9 70 82 36 31

Internet: www.laposte.fr

Pharmacy



In Paris, pharmacies are easily recognisable by the green cross sign. The most prominent ones include Aprium

Pharmacie, which offers

prescription fulfilment, over-the-counter medicines, health consultations, and beauty products, and Citypharma, famous with tourists for its extensive range of French skincare and cosmetic brands at competitive prices. Other notable locations include Pharmacie Monge and Pharmacie du Forum des Halles, both providing a full selection of health and wellness products.

Photo: Dima Mukhin/Unsplash

Address: Citypharma - 26 Rue du Four, Paris

Opening hours: Mon-Fri 8:30am-9pm, Sat 9am-9pm, Sun 11am-8pm

Phone: +33 1 46 33 20 81

Electricity



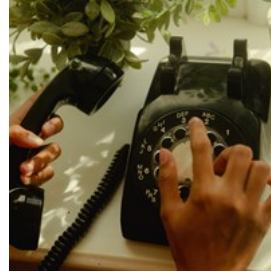
In France, the electrical system operates on a voltage of 230 volts with a frequency of 50 hertz.

The country uses two main types of plugs: type

C, which has two round pins, and type E, which also has two round pins along with an additional hole for the grounding pin.

Photo: Bykfa/shutterstock

Telephone



Country code: +33 Area code: 1

Photo: Wesley Hilario/unsplash

Population

2 million (2025)

Currency

Euro (EUR, €)

Newspapers

Le Monde: www.lemonde.fr

Le Figaro: www.lefigaro.fr

Le Parisien: www.leparisien.fr

Libération: www.liberation.fr

L'Officiel des Spectacles: www.offi.fr

Emergency numbers

Emergency: 112 / 15

Police: 17

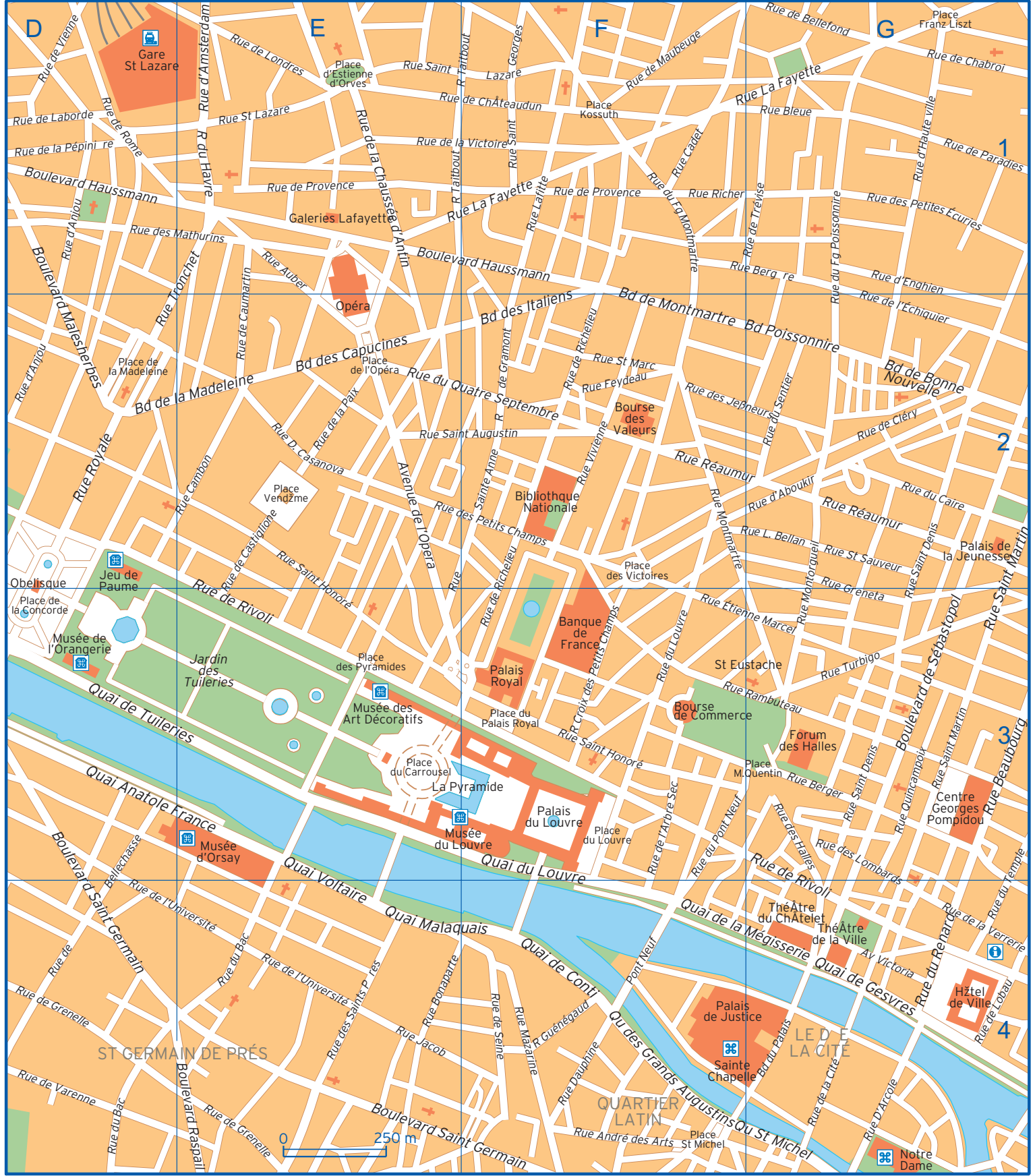
Fire Brigade: 18

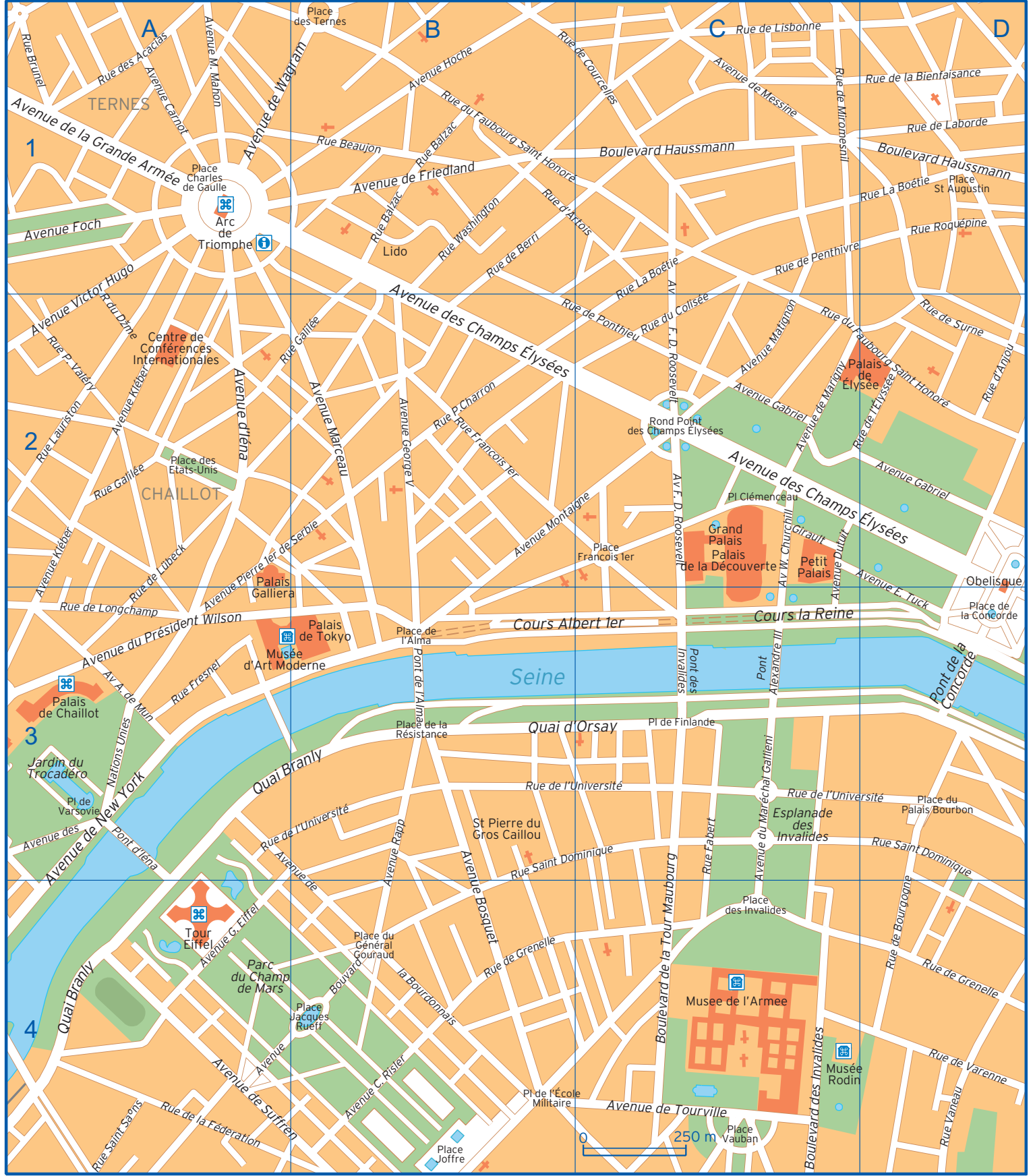
Tourist information

Point Info Tourisme at Galeries Lafayette

48 Boulevard Haussmann, Paris

Opening hours: Mon-Sat 10am-6pm, Sun 11am-7pm





Map of Paris, France, showing major streets and landmarks. The map is divided into a grid with letters A, B, C, D horizontally and numbers 1, 2, 3, 4 vertically.

Key streets and landmarks include:

- Streets:** Avenue de la Grande Armée, Avenue des Champs Élysées, Avenue Montaigne, Avenue de la République, Avenue de la Bourdonnais, Avenue de Tourville, Avenue de Suffren, Avenue de la Fédération, Avenue de la Marne, Avenue de la Nation, Avenue de la Liberté, Avenue de la République, Avenue de la Bourdonnais, Avenue de Tourville, Avenue de Suffren, Avenue de la Fédération, Avenue de la Marne, Avenue de la Nation, Avenue de la Liberté.
- Landmarks:** Arc de Triomphe, Champs Élysées, Grand Palais, Petit Palais, Tour Eiffel, Musée de l'Armée, Musée Rodin, Esplanade des Invalides, Quai d'Orsay, Quai Branly, Parc du Champ de Mars, Jardin du Trocadéro, Palais de Chaillot, Palais de Tokyo, Musée d'Art Moderne, Palais National, Palais de la Découverte, Grand Palais, Petit Palais, Palais de la République, Palais de la Ville, Palais de la Justice, Palais de la Légation, Palais de la Monnaie, Palais de la Bourse, Palais de la Cour des Comptes, Palais de la Cour des Aides, Palais de la Cour des Monnaies, Palais de la Cour des Vignes, Palais de la Cour des Monnaies, Palais de la Cour des Aides, Palais de la Cour des Monnaies, Palais de la Cour des Vignes, Palais de la Cour des Monnaies, Palais de la Cour des Aides, Palais de la Cour des Monnaies, Palais de la Cour des Vignes.
- River:** Seine

Scale: 0 to 250 m.

		Boulevard Haussmann	C1 D1 E1 F1	Quai des Grands Augustins	F4
Avenue A. de Mun	A3	Boulevard Malesherbes	D1 D2	Quai du Louvre	F3 F4
Avenue Bosquet	B3 B4	Boulevard Poissonnière	F2 G2	Quai d'Orsay	B3 C3
Avenue Bouvard	A4 B4	Boulevard Raspail	E4	Quai Malaquais	E4 F4
Avenue C. Rislér	B4	Boulevard Saint Germain	D3 D4 E4 F4	Quai Staint Michel	F4 G4
Avenue Carnot	A1	Cours Albert 1er	B3 C3	Quai Voltaire	E3 E4
Avenue Ch. Girault	C2	Cours la Reine	C3 D3	Rond Point des Champs Élysées	C2
Avenue de Friedland	B1	Place Charles de Gaulle	A1	Rue André des Arts	F4
Avenue de la Bourdonnais	A3 B4	Place Clémenceau	C2	Rue Auber	E1
Avenue de la Grande Armée	A1	Place de Finlande	C3	Rue Balzac	B1
Avenue de l'Opera	E2	Place de la Concorde	D3	Rue Beaubourg	G3
Avenue de Marigny	C2	Place de la Madeleine	D2	Rue Beaujon	B1
Avenue de Messine	C1	Place de la Résistance	B3	Rue Berger	G3
Avenue de New York	A3 A4	Place de l'Alma	B3	Rue Bergère	F1 G1
Avenue de Suffren	A4 B4	Place de l'Opéra	E2	Rue Bleue	G1
Avenue de Tourville	C4	Place de l'École Militaire	B4 C4	Rue Bonaparte	E4
Avenue de Wagram	A1 B1	Place de Varsovie	A3	Rue Brunel	A1
Avenue des Champs Élysées	B1 C2 D2	Place des Etats-Unis	A2	Rue Cadet	F1
Avenue des Nations Unies	A3	Place des Invalides	C4	Rue Cambon	E2
Avenue du Maréchal Gallieni	C3 C4	Place des Pyramides	E3	Rue Croix des Petits Champs	F3
Avenue du Président Wilson	A3	Place des Ternes	B1	Rue D. Casanova	E2
Avenue Dutuit	C2 C3	Place des Victoires	F2	Rue Dauphine	F4
Avenue d'Iéna	A2	Place du Carrousel	E3	Rue de Bellechasse	D3 D4
Avenue E. Tuck	C2 D3	Place du Général Gouraud	B4	Rue de Bellefond	G1
Avenue Foch	A1	Place du Louvre	F3	Rue de Berri	B1
Avenue Franklin D. Roosevelt	C1 C2	Place du Palais Bourbon	D3	Rue de Bourgogne	D3 D4
Avenue G. Eiffel	A4	Place du Palais Royale	F3	Rue de Castiglione	E2 E3
Avenue Gabriel	C2 D2	Place d'Estienne d'Orves	E1	Rue de Caumartin	E1 E2
Avenue George V	B2	Place Francois 1er	C2	Rue de Chabroi	G1
Avenue Hoche	B1	Place Franz Liszt	G1	Rue de Châteaudun	E1 F1
Avenue Kléber	A2 A3	Place Jacques Rueff	B4	Rue de Cléry	G2
Avenue M. Mahon	A1	Place Joffre	B4	Rue de Courcelles	B1 C1
Avenue Marceau	B2	Place Kossuth	F1	Rue de Gramont	F2
Avenue Matignon	C2	Place M.Quentin	G3	Rue de Grenelle	B4 D4 E4
Avenue Montaigne	B2 C2	Place Saint Augustin	D1	Rue de la Bienfaisance	D1
Avenue Pierre 1er de Serbie	A3 B2	Place Saint Michel	F4	Rue de la Chaussée d'Antin	E1
Avenue Rapp	B3 B4	Place Vauban	C4	Rue de la Cité	G4
Avenue Victor Hugo	A1 A2	Place Vendôme	E2	Rue de la Fédération	A4
Avenue Victoria	G4	Pont Alexandre III	C3	Rue de la Paix	E2
Avenue Winston Churchill	C2 C3	Pont de la Concorde	D3	Rue de la Pépinière	D1
Boulevard des Capucines	E2	Pont de l'Alma	B3	Rue de la Verrerie	G4
Boulevard de Bonne Nouvelle	G2	Pont des Invalides	C3	Rue de la Victoire	E1 F1
Boulevard de la Madeleine	D2 E2	Pont d'Iéna	A3	Rue de Laborde	D1
Boulevard de la Tour Maubourg	C3 C4	Pont Neuf	F4	Rue de Lisbonne	C1
Boulevard de Montmartre	F2	Quai Anatole France	D3 E3	Rue de Lobau	G4
Boulevard de Sébastopol	G3	Quai Branly	A3 A4 B3	Rue de Londres	E1
Boulevard des Invalides	C4	Quai de Conti	F4	Rue de Longchamp	A3
Boulevard des Italiens	F2	Quai de Gesvres	G4	Rue de Lübeck	A2 A3
Boulevard du Palais	G4	Quai de Tuileries	D3 E3	Rue de l'Arbre Sec	F3

Rue de l'Université	A3 B3 C3 D3 E4	Rue du Fg Montmartre	F1	Rue Montorgueil	G2 G3
Rue de l'Échiquier	G2	Rue du Fg Poissonnière	G1 G2	Rue P. Valéry	A2
Rue de l'Élysée	D2	Rue du Havre	E1	Rue P.Charron	B2
Rue de Maubeuge	F1	Rue du Louvre	F3	Rue Quincampoix	G3
Rue de Miromesnil	C1	Rue du Pont Neuf	F3	Rue Rambuteau	F3 G3
Rue de Paradies	G1	Rue du Quatre Septembre	E2 F2	Rue Richer	F1 G1
Rue de Penthièvre	C1 D1	Rue du Renard	G4	Rue Roquépine	D1
Rue de Ponthieu	B2 C2	Rue du Sentier	G2	Rue Royale	D2
Rue de Provence	E1 F1	Rue du Temple	G3 G4	Rue Réaumur	F2 G2
Rue de Richelieu	F2 F3	Rue d'Amsterdam	E1	Rue Saint Augustin	E2 F2
Rue de Rivoli	E2 E3 G3 G4	Rue D'Arcole	G4	Rue Saint Denis	G2 G3
Rue de Rome	D1	Rue d'Artois	B1 C1	Rue Saint Dominique	B3 C3 D3
Rue de Seine	F4	Rue d'Engbien	G1 G2	Rue Saint Georges	F1
Rue de Trévise	G1	Rue d'Haute ville	G1	Rue Saint Honoré	E2 E3 F3
Rue de Varenne	D4	Rue Fabert	C3	Rue Saint Lazare	E1 F1
Rue de Vienne	D1	Rue Feydeau	F2	Rue Saint Martin	G2 G3
Rue des Acacias	A1	Rue Francois 1er	B2	Rue Saint Sauveur	G2
Rue des Halles	G3	Rue Fresnel	A3	Rue Saint Saëns	A4
Rue des Jeûneurs	F2 G2	Rue Galilée	A2 B2	Rue Sainte Anne	E3 F2
Rue des Lombards	G3 G4	Rue Greneta	G2 G3	Rue St Marc	F2
Rue des Mathurins	D1 E1	Rue Guénégaud	F4	Rue Taitbout	E1 F1
Rue des Petites Écuries	G1	Rue Jacob	E4	Rue Tronchet	D2 E1
Rue des Petits Champs	E2 F2	Rue L. Bellan	F2 G2	Rue Turbigo	G3
Rue des Saints Pères	E4	Rue La Boétie	C1 C2 D1	Rue Vaneau	D4
Rue du Bac	D4 E4	Rue La Fayette	E1 F1 G1	Rue Vivienne	F2
Rue du Caire	G2	Rue Lafitte	F1	Rue Washington	B1
Rue du Colisée	C2	Rue Lauriston	A2	Rue Étienne Marcel	F3 G3
Rue du Dôme	A2	Rue Montmartre	F2		