



Manchester

in collaboration with Visit Manchester

Photo: Marketing Manchester



Robert Harding Video/Shutterstock

Known as the birthplace of the Industrial Revolution, Manchester is a city of music, football, and cutting-edge culture. Its rich history meets modern creativity in iconic architecture, bustling markets, world-class museums, and a nightlife that keeps the city humming. From red-brick mills to world-famous football grounds, Manchester buzzes with history, culture, and creativity.

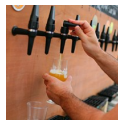


Marketing Manchester



Marketing Manchester

Events



Manchester Craft Beer Fest...
Manchester Craft Beer Festival, Manchester's only city-wide beer festival, a...



Manchester International F...
Manchester International Festival (MIF) is the world's first festival of ori...



Manchester Film Festival (...)
Manchester Film Festival is a truly independent film festival, committed and...



Manchester Jazz Festival (May)
The award-winning Manchester Jazz Festival (MJF) is back in the city every M...



Manchester Pride (August)
Manchester Pride is the charity that runs Manchester's annual LGBTIQ+ celeb...

Top 5



Manchester United Museum &...
The Manchester United Museum & Stadium Tour offers a



Manchester City Football Club
Go behind the scenes at the world's fastest-growing football club. On the St...



Coronation Street Experience
ITV has opened its outdoor Coronation Street sets at MediaCityUK to the publ...



Hop-on Hop-off Sightseeing
Known throughout the world as the birthplace of the industrial revolution, M...



National Football Museum
Whether you're a die-hard football fan, planning a visit with your family, o...

THE CITY



Marketing Manchester

Manchester is one of the UK's most dynamic and cosmopolitan cities, known for its warm welcome and rich traditions in culture, music, sport, and world-class events. Across Greater Manchester, there's something to suit every taste and interest.

For sports enthusiasts, the city is a dream destination. Whether it's football, cricket, cycling, or a packed calendar of year-round events, Manchester offers plenty to keep fans entertained — both on and off the pitch. Beyond sport, the city's cultural scene thrives, with music, art, theatre, and architecture celebrated for their creativity and high standards.

Manchester's heritage is as diverse as it is fascinating. It's the birthplace of the computer, the football league, and Top of the Pops. History buffs can explore the Science and Industry Museum, housed in the world's first passenger railway station, or visit Chetham's Library, the oldest public library in the English-speaking world.

When it comes to shopping, Manchester stands out as the North's retail hub. From luxury boutiques and high-street favourites to independent stores and local markets, there's something for every shopper. The city's food

scene is equally impressive, with a mix of high-end dining, globally inspired cuisine, and locally sourced dishes. Renowned chefs and a thriving independent scene have cemented Manchester's reputation as a destination for food lovers.

A night out in Manchester is a must, with each neighbourhood offering its own distinct vibe. From cosy pubs and trendy bars to lively clubs, the city's nightlife caters to all tastes. Music is woven into the fabric of Manchester, with iconic acts like The Smiths, Take That, and Oasis having shaped the sound of rock and pop. Today, the city's venues host everything from classical and jazz to indie and electronic music.

For those looking to escape the urban energy, Greater Manchester's countryside provides a refreshing contrast. Miles of scenic landscapes, historic waterways, and charming towns make for perfect day trips.

DO & SEE



Marketing Manchester

Manchester is perhaps best known internationally for two things: music and football. Huge musical acts, including The Hollies, The Bee Gees, New Order, Oasis, Take That, Simply Red, and many more, have hailed from Manchester. The yearly "In The City" music festival has launched many to international

stardom.

Football fans will want to visit the legendary Old Trafford stadium, museum, and megastore. But Manchester has a lot more to offer than just music and sports. It is a young and creative city, with outstanding museums, food, and nightlife, crisscrossed by canals, which give it a unique atmosphere. And one of the greatest pleasures about visiting Manchester is exploring the various districts on foot.

Manchester United Museum & Tour Centre



The Manchester United Museum & Stadium Tour offers a behind-the-scenes look at the world's most iconic stadium: Old Trafford. Come and sit in the manager's seat in the dugout, walk through the players' tunnel towards the hallowed turf, and find the seat of your favourite player in the dressing room. Get a feel for life in the Premier League and immerse yourself in an unrivalled story, the greatest football story ever told.

Manchester United welcomes groups of all sizes, from all over the world, every day to the home of Manchester United, from individuals and families to international group tours, providing the same world-class experience to all.

Photo: Marketing Manchester

Address: Sir Matt Busby Way, Old Trafford, Stretford, Manchester

Opening hours: The museum is closed on all match days

Phone: +44 161 676 7770

Internet: www.manutd.com/museum

Manchester City Football Club



Go behind the scenes at the world's fastest-growing football club. On the Stadium and Club Tour, a professional guide will lead an

unforgettable and comprehensive tour of the club and Etihad Stadium, capturing the essence of Manchester City. The tour will showcase the pride, passion, and heritage of the football Club. It demonstrates how every aspect of the club, both on and off the pitch, contributes to making Manchester City the club it is today.

Visitors can see how it feels to be grilled by the media in the press conference room hot seat, visit the inner sanctum of the City dressing room, and walk down the tunnel imagining the roar of 55,000 supporters cheering on their heroes. Finally, take in the view from new manager Pep Guardiola's seat in the dug-out; there's the opportunity to experience everything.

Outside of the football season, the stadium hosts major national and international football events as well as summer concerts. Stadium tours are available, and the club has an excellent museum packed full of football memorabilia.

Photo: Marketing Manchester

Address: Etihad Stadium, Rowsley Street, Manchester, Greater Manchester

Phone: +44 161 444 1894

Internet: www.mancity.com

Email: mancity@mancity.com

Coronation Street Experience



ITV has opened its outdoor Coronation Street sets at MediaCityUK to the public, including the world-famous cobbled street. The experience lasts around 90 minutes, taking in Coronation Street, Rosamund Street, and the newly extended Victoria Street, with plenty of opportunities for photos. Visitors will walk in the footsteps of the famous residents, discover filming secrets, and hear stories of their favourite characters.

Photo: Marketing Manchester

Address: The Studios from Dock 10, MediaCityUK, Trafford, Greater Manchester

Phone: +44 871 222 8223

Internet: www.coronationstreetexperience.co.uk

Hop-on Hop-off Sightseeing



Known throughout the world as the birthplace of the industrial revolution, Manchester has a proud history in science, politics, music, arts and sport. Discover the city's heritage and how it has grown to be the progressive hub it is today with a 90-minute bus tour.

The 15-stop hop-on hop-off tour has been carefully planned to take you round some of Manchester's key sights, including Town Hall Manchester, National Football Museum, Museum of Science and Industry, and Manchester United Football Club.

Your ticket is valid for 24 hours from the time of purchase if on the bus or from the date chosen if online, and you can board any Sightseeing

Manchester-branded bus during this time. There is one main tour route with recorded commentary in English. For other languages, there is a free app that can be downloaded from the App Store and Google Play.

Photo: Marketing Manchester

Internet: www.sightseeingmanchester.com

More Info: English commentary by Lord of the Rings and Lost actor Dominic Monaghan.

National Football Museum



Whether you're a die-hard football fan, planning a visit with your family, or on a weekend break to the great city of Manchester, enjoy a visit to the world's biggest and best football museum. Delve into the social history and culture of the beautiful game, exploring football's past and present through the museum's extensive collection.

Photo: Marketing Manchester

Address: Todd Street, Manchester

Opening hours: Daily 10am-5pm

Phone: +44 161 605 8200

Internet: www.nationalfootballmuseum.com

Email: info@nationalfootballmuseum.com

Play Factor



Play Factor is the UK's leading family entertainment centre. With facilities that cater for children from 6 months to 16 years old, Play Factor is the only family entertainment arena in the UK where parents can play with children on age-applicable equipment — meaning you can join in the fun with your little adventurers too!

Play Factore's state-of-the-art venue houses the largest play frame in the UK, along with a host of other unique attractions that are second to none. Based in Manchester next to the Trafford Centre, Play Factore provides a complete day out for families shopping in the area and planning to entertain the children.

Photo: Marketing Manchester

Address: Trafford Quays, Leisure Village, 7 Trafford Way, Trafford Park, Stretford, Manchester

Opening hours: Daily 10am-6pm

Phone: +44 161 748 6851

Internet: www.playfactore.com

Email: info@playfactore.com

More Info: Online booking is required.

The Crystal Maze LIVE Experience



In the 90s, The Crystal Maze was one of the UK's favourite television shows. Now it's your turn to be the star of the show. The ultimate team

challenge, in which you and your friends face challenges testing your skill, mental, and physical ability across four adventure time zones: Aztec, Industrial, Futuristic, and Medieval. For each challenge completed, your team will earn a Crystal. The more Crystals you earn, the more time you'll get in the final challenge — The Crystal Dome!

Build a team of 8 of your friends with a variety of skills to take on the challenge of the Maze.

Photo: The Crystal Maze Live Experience/Marketing Manchester

Address: St Johns, Lower Byrom Street, Manchester

Phone: +44 161 791 0727

Internet: www.the-crystal-maze.com/manchester

Email: guestservices@the-crystal-maze.com

More Info: Near the Science & Industry Museum

Chinatown



Manchester's Chinatown is one of the largest Chinese districts in Europe, centred around the ornate arch on Faulkner Street. The area mixes long-running Cantonese restaurants with casual noodle spots, bakeries, and late-night eateries, alongside Korean, Thai, and Indonesian cafés and shops.

Photo: Elzbieta Sekowska/shutterstock

Address: Faulkner Street, Manchester

Internet:

www.visitmanchester.com/listing/chinatown/27503101

Chester Zoo



Chester Zoo is home to over 21,000 endangered and exotic animals based in beautiful, award-winning gardens and is the nearest large zoo to Manchester. With over 500 different animal species in their 125 acres, visitors are sure to have an adventure discovering and learning about the amazing wildlife.

Conservation and education are at the heart of everything at Chester Zoo. They are committed to providing the highest standards of care for their animals as well as protecting native and international wildlife. Their team of expert and knowledgeable staff work hard to prevent extinction and are passionate about connecting visitors to the natural world. Chester Zoo has a variety of tours and hands-on experiences, as well as daily animal talks to guarantee a day full of animal adventure.

Stop for a snack at one of their many

restaurants, cafes, and kiosks, including their recently refurbished contemporary British pub, The Oakfield. It's a huge zoo, but there are plenty of options for getting around, including the Zoofari Monorail and the Lazy River Boat Trip on the Islands. Don't forget to stop in at the gift shop on your way out for a souvenir of your trip.

Photo: Adrian Dockerty/shutterstock

Address: Chester Zoo, Upton-by-Chester, Chester

Opening hours: Daily 10am-4:30pm

Phone: +44 1244 380280

Internet: www.chesterzoo.org

City Centre Cruises



City Centre Cruises offers a relaxed way to see Manchester from the water, gliding along its historic canals past former mills, red-brick warehouses and modern waterfront developments. Trips range from simple sightseeing cruises to afternoon teas, Sunday lunches and evening buffet sailings, all taken at an easy pace that lets you soak in the city's industrial heritage from a different angle.

Photo: Edvard Nalbantjan/shutterstock

Address: Castlefield Events Arena, Liverpool Road, Castlefield, Manchester

Opening hours: Mon-Fri 10am-5pm

Phone: +44 161 902 0222

Internet: www.citycentrecruises.co.uk

Ordsall Hall



Ordsall Hall is Salford's 'hidden gem'. Dating back over 600 years, it is one of the region's finest examples of an Elizabethan black and

white half-timbered manor-house. Wander back through time, soaking up the atmosphere of its fully-furnished Great Hall and Star Chamber Bedroom.

Get the low-down on Tudor lifestyles; maybe reminisce in its Victorian showcase and kitchen, or unearth the wealth of new discoveries to be made in its exciting and informative family events and exhibitions programme.

Photo: Orry Verducci/unsplash

Address: 322 Ordsall Lane, Salford

Phone: +44 161 872 0251

Internet: www.ordsallhall.com

Email: ordsall.hall@scll.co.uk

John Rylands Library



For those who set eyes on Deansgate's John Rylands Library for the first time, 'library' might not be the first word that comes to mind. This masterpiece of Victorian Gothic architecture looks more like a castle or cathedral.

When John Rylands died in 1888, he was one of Manchester's most successful industrialists with a personal fortune of £2.75 million. The library was commissioned in 1890 by his wife, Enriqueta Rylands, in memory of her late husband.

This world-class collection includes the oldest known piece of the New Testament, the St John Fragment. Other treasures of the vast, varied collection include magnificent illuminated medieval manuscripts and a 1476 William Caxton edition of Chaucer's Canterbury Tales.

Photo: John Rylands Library/Marketing Manchester

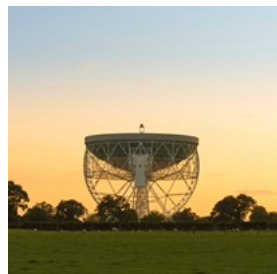
Address: 150 Deansgate, Manchester

Phone: +44 161 306 0555

Internet: www.library.manchester.ac.uk/rylands

Email: jrl.visitors@manchester.ac.uk

Jodrell Bank Centre for Engagement



A beloved landmark in the Cheshire countryside south of Manchester, the Jodrell Bank Centre for Engagement is a reminder of just how important the city is to the world of science.

The University of Manchester's impressive radio telescope centre is a key part of the UK's astronomy research, scanning the skies to improve our knowledge of the Universe.

The Jodrell Bank Centre for Engagement allows visitors to discover the Universe beside the world-famous Lovell Radio Telescope and explore the planet Earth in the beautiful 35-acre tree-filled gardens.

Photo: Morphius Film/shutterstock

Address: Bomish Lane, Cheshire, Macclesfield

Opening hours: Daily 10am-5pm

Phone: +44 1477 571766

Internet: www.jodrellbank.net

East Lancashire Railway



With a storied history stretching back to the beginning of the Industrial Revolution, the East Lancashire Railway is the steam-powered heart of the Irwell Valley, pumping goods and people around the region for nearly 200 years!

The line runs for 12 miles through scenic Lancastrian Landscapes, from beautiful rural panoramas and postcard pretty villages to

bustling Victorian towns and cotton mill-dotted horizons. Each station offers something unique, from historical Heywood to relaxing Rawtenstall, scenic Summerseat, and bustling Bury. Make the trip from Grandparent to Grandchild on a journey that spans generations on this heritage railway.

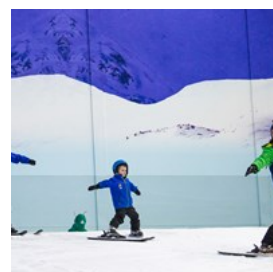
Photo: Marketing Manchester

Address: Bury Bolton Street Station, Bolton Street, Bury, Greater Manchester

Internet: www.eastlancsrailway.org.uk

Email: enquiries@eastlancsrailway.co.uk

The Snow Centre Manchester



The Snow Centre Manchester is an indoor snow complex just outside the city with real snow year-round. The main draw is the play park, where sledging lanes, snow luge rides, and downhill donuts keep families busy for a couple of hours, alongside indoor ski and snowboard slopes for lessons and practice. It's a popular option when the weather's grey or plans need a change of pace from museums and shopping.

Photo: Chill Factore/Marketing Manchester

Address: 7 Trafford Way, Trafford Park, Stretford, Manchester

Phone: +44 161 749 2222

Internet: <https://thesnowcentre.com/manchester>

Email: info-mcr@thesnowcentre.com

Imperial War Museum North (IWM North)



The IWM North explores the impact of war and conflict on people's lives, both historically and in the present day. Designed by renowned architect Daniel Libeskind, the building itself is a striking

representation of a world fractured by conflict.

At its opening, Libeskind described his vision as creating a space that 'emotionally moves the soul of the visitor toward a sometimes unexpected realisation'.

Located on Trafford Wharf Road in Trafford Park, the museum overlooks the Manchester Ship Canal, an area that played a crucial industrial role during World War II and suffered heavy bombing in the 1940 Manchester Blitz.

Photo: SAKhanPhotography/shutterstock

Address: Trafford Wharf Road, Trafford Park, Stretford, Manchester

Public Transport: Eccles line to MediaCityUK

Opening hours: Daily 10am-5pm

Phone: +44 161 836 4000

Internet: www.iwm.org.uk/visits/iwm-north

Standedge Tunnel & Visitor Centre



Hard hats at the ready! Standedge Tunnel is Britain's longest, deepest, and highest canal tunnel, hidden deep beneath the beautiful Pennine

countryside. One of the seven wonders of the local waterways, this must-see attraction is located in Marsden, a charming Yorkshire village.

A great day out for all the family, there is something for everyone to enjoy. Discover the history of Standedge in the visitor centre, which is free to enter. Learn the stories of the folk who built and navigated this tremendous tunnel. Meanwhile, the kids will be kept occupied in the indoor soft play area and the outdoor adventure play area!

Feeling peckish? You'll find the wonderful Watersedge Café in the old Tunnel End cottages. Enjoy a cup of tea and a slice of cake or visit for lunch on a lovely summer's day by the canal. You may even see the resident ducks, Jemima and Duncan, float past the picnic tables.

Photo: Marketing Manchester

Address: Waters Road, Marsden, Huddersfield, West Yorkshire

Phone: +44 1484 242792

Internet: www.canalrivertrust.org.uk/things-to-do/museums-and-attractions/standedge-tunnel

Email: standedge@canalrivertrust.org.uk

Bramall Hall



This magical Tudor manor house is set in more than 50 acres of parkland with lakes, woods, and gardens. The house contains

16th-century wall paintings, fine Elizabethan plaster ceilings, Victorian kitchens, and servants' quarters. Today, Bramall Hall functions as a museum, and its landscaped parkland is open to the public.

Photo: Alastair Wallace/shutterstock

Address: Bramhall Park, Stockport, Greater Manchester

Phone: +44 161 474 2020

Internet: www.stockport.gov.uk/topic/bramall-hall

Stockport Air Raid Shelters



Step back in time at the wartime air-raid shelters and experience the sights and sounds of Britain's Home Front. Visitors can walk through original

tunnels, carefully re-equipped to show what daily life was like during the 1940s, and follow the stories of locals through clear, well-curated

displays and an audio guide.

First opened in 1939, the shelters were the largest purpose-built civilian air-raid shelters in the country, originally designed for 3,850 people and later expanded during 1940–41 to hold up to 6,500. Cut directly into the sandstone cliffs beneath the town centre, the mile-long network offers a rare look at wartime engineering and civilian life.

The site reopened in 1996 as a visitor attraction after restoration by Stockport Council and has since become one of the town's most important museums. Today, it works as both a memorial and an educational space, giving a direct sense of how communities lived through the air raids.

Photo: Marketing Manchester

Address: 61 Chestergate, Cheshire, Stockport

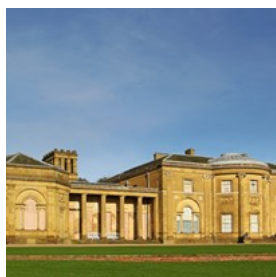
Opening hours: Self-guided tours: Tue–Fri 1pm–4pm, Sat 10am–4pm, Sun 11am–4pm, Mon closed

Phone: +44 161 474 1940

Internet: www.stockport.gov.uk/topic/air-raid-shelters

Email: airraidshelters@stockport.gov.uk

Heaton Park



At Heaton Park, the largest and most beautiful park in the area, you can find plenty of family activities, such as an animal centre, tram museum, bowling greens, golf course, boating lake, and horse riding. If you haven't brought your picnic basket, there are cafés on-site to solve that problem.

Photo: Alastair Wallace/shutterstock

Address: Middleton Road, Higher Blackley, Manchester

Opening hours: Daily 8am–dusk

Phone: +44 161 773 1085

Internet: www.manchester.gov.uk/heatonpark

Victoria Baths



The Victoria Baths complex was designed by Manchester's first city architect, Henry Price, and opened in 1906. No expense was spared — the façade has multicoloured brickwork and terracotta decoration, the interior spaces are clad in glazed tiles and most of the windows have decorative stained glass. At the opening ceremony, the Lord Mayor described Victoria Baths as “a water palace of which every citizen of Manchester is proud”.

For 86 years, the baths provided both essential and leisure facilities. Private baths and a laundry were housed there alongside three swimming pools and Turkish Baths. In 1952, the first public Aeratone (Jacuzzi) was installed. Even though the baths were closed in 1993, the Grade II listed building is remarkably intact, with most of the stained glass and original tiling remaining.

Victoria Baths opens from March/April to October/November each year for weekly guided tours, public open days, and special events.

Photo: Marketing Manchester

Address: Hathersage Road, Manchester, Lancashire

Phone: +44161 224 2020

Internet: www.victoriabaths.org.uk

Email: enquiries@victoriabaths.org.uk

FC United of Manchester— Broadhurst Park



FC United of Manchester (FCUM) is a community benefit society and a not-for-profit organization based on the outskirts of Manchester City Centre.

They pledge “to develop strong links with the local community,” and our volunteers and supporter base make us what we are and, by doing so, make a positive difference in Manchester and help change football for the better. Whatever your background, story, or beliefs, you are always sure of a warm welcome at Broadhurst Park.

Photo: FC United/Marketing Manchester
Address: Broadhurst Park, 310 Lightbowne Road, Moston
Phone: +44 161 769 2005
Internet: www.fc-utd.co.uk

Manchester Opera House



Opening all the way back in 1912, the Manchester Opera House hosts a constantly evolving lineup of theatrical and musical performances, from timeless operas and ballets to more contemporary concerts and artists.

Photo: Tupungato/shutterstock
Address: 3 Quay Street, Manchester
Phone: +44 333 009 5399
Internet:
www.atgtickets.com/venues/opera-house-manchester
More Info: The box office opens 90 minutes prior to performances.

Lake District National Park



The great outdoors is just around the corner, and the Lake District National Park in Cumbria is England’s largest national park. The Lake District offers some of the best scenery and outdoor pursuits in one of England’s few mountainous regions.

With more than 3,500 kilometres of walking and hiking routes through the lakes, there’s a trail to suit everyone. For the daredevils, there is also hang gliding, paragliding, kayaking, canoeing, water skiing, rock scrambling, abseiling, hot-air ballooning, paintballing, and much more.

Photo: Undivided/shutterstock
Address: Bowness on Windermere Information Centre, Lake District National Park, Windermere
Internet: www.lakedistrict.gov.uk
Email: hq@lakedistrict.gov.uk

DINING



Chatham172/Shutterstock

The dining scene in Manchester is constantly changing, with new restaurants, gastropubs, and bars opening across the city. It has become one of the UK’s most diverse food cities, offering everything from street food to fine dining. A local specialty worth trying is the Manchester Egg, a Scotch egg wrapped in black pudding and sausage, breaded and deep-fried, which can be found at several pubs and restaurants around the city.

The Little Yang Sing



Tucked just off the Chinese Arch in Manchester's Chinatown, Little Yang Sing is a no-frills restaurant, which has been serving

Cantonese cuisine and dim sum since 1977. The menu features classic favourites, including har kau, char siu buns, prawn parcels, alongside mains such as steamed sea bass with spring onion and coriander, beef in black bean sauce, BBQ duck and comforting stir-fries.

Photo: kimberlywood/shutterstock

Address: 17 George Street, Manchester

Public Transport: Princess St/Chinatown (Stop SF)

Phone: +44 161 228 7722

Internet: www.littleyangsing.co.uk

Email: dine@littleyangsing.co.uk

Sapporo Teppanyaki



Teppanyaki is a staple of Japanese cuisine, a way of cooking using an iron griddle. At Sapporo Teppanyaki, the chefs will entertain you with a show

as they prepare your meal in front of your very eyes. To complete your Japanese experience, sake and Japanese cocktails, beers and whiskeys are to be found on the drinks menu.

Photo: waranya_photo/shutterstock

Address: 91-93 Liverpool Road, Manchester

Opening hours: Mon-Sat noon-11pm, Sun noon-10:30pm

Phone: +44 161 831 9888

Internet:

www.sapporo.co.uk/japanese-restaurant-manchester

Corn Exchange



Corn Exchange is a stunning, renovated Grade II listed building at the very heart of Manchester, housing 13 restaurants serving a

variety of high-quality world cuisine. With options including Greek, German, Italian, Indian, British, Pan Asian and Vietnamese cuisines, there's something to suit every taste.

With neighbours including Manchester Victoria Station, Manchester Arena, the National Football Museum, Selfridges and Manchester Cathedral, Corn Exchange's location is perfect for exploring the city's most popular sights.

Photo: Corn Exchange/Marketing Manchester

Address: Exchange Square, Manchester

Opening hours: Daily 10:30am-11:30pm

Phone: +44 161 834 8961

Internet: www.cornexchangemanchester.co.uk

TNQ – The Northern Quarter Restaurant & Bar



TNQ is an independent neighbourhood restaurant in the heart of Manchester's Northern Quarter, led by head chef Anthony Fielden. Served

in a relaxed and stylish dining room, famous for its exposed wooden floor and grand windows showcasing the iconic Smithfield Fish Markets. Bold and thought-provoking contemporary British cuisine is crafted using only the finest seasonal ingredients the British Isles has to offer.

Photo: TNQ/Marketing Manchester

Address: 108 High Street, Manchester

Opening hours: Mon-Sat noon-10pm, Sun noon-7pm

Phone: +44161 832 7115

Internet: www.tnq.co.uk

Australasia



Australasia opens via a glass pyramid on The Avenue in Spinningfields, leading down to a white-washed, softly lit subterranean dining space. Modern Australian cuisine takes the lead here, with Japanese, Korean and Southeast Asian influences appearing across sushi, sashimi, robata-grilled meats and small plates. Cocktails are as considered as the food, with options like the smoky “Osaka Smoke” alongside wines and Japanese spirits.

Photo: Australasia/Marketing Manchester

Address: 1 The Avenue, Spinningfields, Manchester

Opening hours: Daily noon-midnight

Phone: +44 161 831 0288

Internet: www.australasiamcr.co.uk

Shoryu Ramen



Shoryu Ramen brings a slice of Hakata to the heart of Manchester, serving bowls of rich, creamy pork broth with thin, straight noodles and toppings like chashu pork, soft-boiled egg, mushrooms and spring onion. There’s also a lighter soy milk and shiitake broth for vegetarians and vegans. Alongside ramen, the menu features gyoza, tempura and fluffy pork buns, with sake and cocktails to match.

Photo: Shorya Ramen/Marketing Manchester

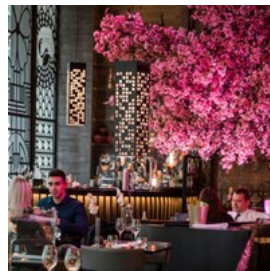
Address: 1 Piccadilly Gardens, Manchester

Opening hours: Sun-Tue 11:30am-10:30pm, Wed-Sat 11:30am-11pm

Internet: www.shoryuramen.com/stores/76-manchester

Email: Hello@shoryuramen.com

Tattu



Tattu blends modern Chinese cooking with a strong sense of drama, set inside a moody interior of carved screens, dark wood, soft lighting, and a central blossom installation. The menu centres on dim sum and sharing plates alongside elegantly presented signature dishes. Cocktails are a big part of the experience, with an inventive list alongside a serious wine selection and quality sake. Seating ranges from sociable high tables to intimate booths, while the glamorous Tattu Parlour offers a more exclusive option for private dinners or events.

Photo: Tattu/Marketing Manchester

Address: 3 Hardman Square, Manchester

Opening hours: Sun-Thu noon-midnight, Fri & Sat noon-1am

Phone: +44 161 819 2060

Internet: www.tattu.co.uk/locations/manchester

The Anthologist



The Anthologist is a rustic-chic tavern on St Peter’s Square in central Manchester, serving international flavours through small plates, sharing boards, burgers, steaks, seafood and vegetarian options. Weekend brunch and inventive cocktails draw a steady mix of locals and visitors. When the weather holds, a planted terrace overlooks the square, perfect for a relaxed drink or meal.

Photo: The Anthologist/Marketing Manchester

Address: One St Peters Square, Manchester

Opening hours: Mon noon-9pm, Tue-Thu 11am-11pm, Fri 11am-midnight, Sat 10am-midnight, Sun 10am-6pm

Phone: +44 161 667 0640

Internet:

www.drakeandmorgan.co.uk/the-anthologist-manchester

Vermilion & Cinnabar



Vermilion & Cinnabar is a huge three-storey Asian fantasy wonderland that includes a restaurant, cocktail lounge, and club. The kitchen serves a mix of dishes, from tandoori king prawns and Thai-style whole sea bass to rich curries and sushi-influenced plates, and you can enjoy them in a stylish setting made up of velvet booths, bold lighting, and décor that blends Asian motifs with club-house glamour. Upstairs, Cinnabar hosts DJs and cocktails, with semi-private cocoon booths that make it a popular spot for drinks late into the night.

Photo: Vermilion Restaurant/Marketing Manchester
Address: Lord North Street, Off Hulme Hall Lane, Manchester
Phone: +44161 202 0055
Internet: www.vermilion.uk.com

Zouk Tea Bar & Grill



Zouk Tea Bar & Grill brings a modern, energetic take on Indian and Pakistani cooking to Manchester, blending bold flavours with a

surprisingly health-conscious approach. The menu ranges from comforting Lahori classics to show-stopping Sajji roasts (whole lamb leg or chicken slow-roasted in spices and served with rich gravy and crisp potatoes) alongside seafood dishes and changing regional specials that keep regulars coming back.

Photo: Zouk Tea Bar & Grill/Marketing Manchester
Address: 5 Quadrangle, Chester Street, Manchester
Opening hours: Daily 9am-midnight

Phone: +44 161 233 1090
Internet: www.zoukteabar.co.uk
Email: info@zoukteabar.co.uk

Don Giovanni



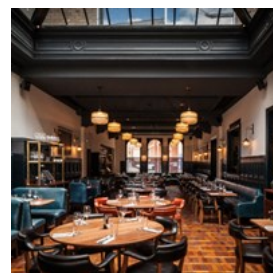
Head to award-winning Italian Don Giovanni on St Peter's Square for hand-crafted cocktails, a superb lunch menu, and pre-theatre dining that will start your evening on a high.

Situated in the heart of Manchester's theatre strip, Don Giovanni is the city's oldest Italian restaurant and has been feeding the public for over 30 years. It is perfectly positioned for the Palace Theatre, Opera House, Manchester Central, Bridgewater Hall, and many other city centre attractions.

Showcasing freshness and quality first, Don Giovanni integrates traditional Italian culture into every dish with homemade pizza, bread, pasta and desserts created freshly in-house.

Photo: Don Giovanni/Marketing Manchester
Address: 1 Peter House, Oxford Street, Manchester
Opening hours: Mon-Wed noon-10:30pm, Thu-Sat noon-11pm, Sun noon-10pm
Phone: +44 161 228 2482
Internet: www.dongiovanni.uk.com

Hawksmoor



Hawksmoor Manchester is a British steakhouse and cocktail bar located in a late Victorian courthouse on Deansgate. Their menu revolves

around the best ingredients they can find, whether it be beef from ethically-reared, grass-fed native cattle, sustainable seafood from

around the British coast, or seasonal fruits and vegetables. This is accompanied by a list of carefully selected wines, original cocktails, and beers brewed locally in the North West.

Photo: Hawksmoor Manchester/Marketing Manchester
Address: 184-186 Deansgate, Manchester
Opening hours: Mon–Thu noon–11pm, Fri & Sat noon–11:30pm, Sun 11:30am–10:30pm
Phone: +44 161 836 6980
Internet: <https://thehawksmoor.com>

Tampopo

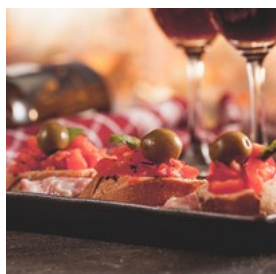


A laid-back and inexpensive place with long tables and benches, Tampopo is a great option when you're looking for a quick bite to eat. Asian

flavours fill the menu, with options such as noodles, curries and stir-fries.

Photo: Silatip/shutterstock
Address: 16 Albert Square, Manchester
Opening hours: Mon–Sat 11am–11pm, Sun 11am–10pm
Phone: +44 161 819 1966
Internet: www.tampopo.co.uk/albert-square
Email: info@tampopo.co.uk
More Info: Tampopo has four locations in Manchester, including one at Corn Exchange.

Evuna



Located on Manchester's most prestigious street, Deansgate, Evuna is a Spanish tapas bar and wine house serving classic tapas, full meals

and an extensive selection of Spanish wines. The “pescado a la sal” (sea bass baked in rock salt and tableside-filleted) is one of their signature dishes, alongside favourites like croquetas, calamares, patatas bravas, and of course, paella. Evuna also operates as a wine merchant,

stocking a range of imported Spanish wines by the bottle or case for those who want to take a taste of Spain home.

Photo: naito29/shutterstock
Address: 277-279 Deansgate, Manchester
Phone: +44 161 819 2752
Internet: www.evuna.com

CAFÉS



Marketing Manchester

Manchester has historically been overrun with big chain coffee shops, but a new wave of independent, high-quality, and often quirky cafés and tea houses has been taking over the city, offering more diverse alternatives and more original products. Give these cafés a try, support local entrepreneurs, and while you're at it, enjoy a truly delicious cup of coffee.

Sugar Junction



Sugar Junction was created out of a love for all things vintage, baking, and wholesome food. The company was started by a mother-daughter team

that strives to provide high-quality homemade food with great service in a comfortable environment. They serve freshly baked cakes and about 25 different types of tea.

Photo: Africa Studio/shutterstock

Address: 60 Tib Street, Manchester
Opening hours: Daily 9am-6pm
Phone: +44 161 839 4753
Internet: www.sugarjunction.co.uk

Hey Little Cupcake!

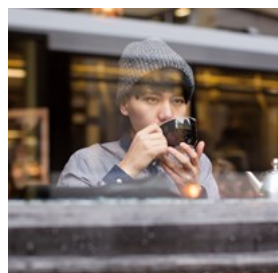


Be sure to make a beeline for Hey Little Cupcake!, which is tucked away along the leafy walkway connecting Hardman Street to Atkinson Street in Manchester's super-chic Spinningfields.

Scrumptious signature flavours such as the red velvet, hazelnut cookie, and Victoria sandwich cupcakes neatly line the counter. Try the seasonal specials, ooey-goey brownies, mouth-watering slabs of rainbow cake, cute cake pops, and refreshing home-made lemonade. Teapigs is also served here, the perfect complement to your treat of choice.

Photo: Marketing Manchester
Address: 2 Hardman Street, Manchester
Phone: +44 161 832 0260
Internet: www.heylittlecupcakeshop.uk
Email: hello@heylittlecupcake.co.uk

Ezra & Gil



Situated in Manchester's Northern Quarter, Ezra & Gil is a contemporary café blending quality coffee with creative light meals. Known for its efficient service and inviting atmosphere, it has gained a reputation as a standout destination for those seeking a memorable café experience.

Photo: JR photography1/shutterstock
Address: 20 Hilton Street, Manchester
Internet: www.ezraandgil.com

Email: hello@ezraandgil.co.uk

Moose Coffee



Moose Coffee brings the essence of North American breakfast culture to the UK with its hearty, diner-style offerings. Known for dishes like buttermilk pancakes, doorstep French toast, and the New York Moose, the family-owned café delivers an authentic experience. With seven locations across the North West, it combines a commitment to quality food with community-focused initiatives, making it a standout choice for breakfast and brunch enthusiasts.

Photo: DronG/shutterstock
Address: 20 York Street, Manchester
Phone: +44 161 228 7994
Internet: www.moosecoffee.co
Email: enquiries@moosecoffee.co

BARS & NIGHTLIFE



Tint Media/Shutterstock

Manchester boasts one of the UK's strongest and most diverse nightlife scenes, offering plenty of alternatives for drinking, partying, and catching world-class concerts and performances. Hacienda was once perhaps Europe's most famous club (back in the 'Madchester' days), and though it is no longer in operation, the

adventurous spirit of the city's nightlife remains intact in the numerous venues in the Northern Quarter, Castlefield, and Gay Village.

BrewDog Manchester



BrewDog is a large chain of pubs with plenty of character. They describe their beers as 'uncompromising, bold and irreverent', a playful rebellion against bland industrial brews. With that sales pitch, you know you're in for something special at BrewDog.

Photo: Manuela Durson/shutterstock

Address: 35 Peter Street, Manchester

Opening hours: Sun-Wed noon-midnight, Thu noon-1am, Fri & Sat noon-2am

Phone: +44 161 467 1998

Internet: www.brewdog.com/uk/brewdog-manchester

Email: manchesterbar@brewdog.com

Tariff & Dale



Tariff & Dale is an industrial-style bar and restaurant on Manchester's edge of the Northern Quarter, serving sourdough pizzas, pub classics, British beers and creative cocktails. The space retains original features with clever touches: a tradesmen's entrance becomes the main door, a former lift shaft is now a snug booth, and a historic hydraulic fabric press stands in the entrance.

Photo: Tariff & Dale/Marketing Manchester

Address: 2 Tariff Street, Manchester

Opening hours: Mon-Thu noon-midnight, Fri & Sat noon-2am, Sun noon-10pm

Phone: +44 161 710 2233

Internet: www.instagram.com/tariffdale

Email: hello@tariffanddale.com

Hard Rock Cafe



Hard Rock Cafe Manchester sits inside The Printworks, a short walk from the Arndale Centre and the National Football Museum. The

UK's largest Hard Rock serves American favourites: burgers, ribs and shakes, alongside beers and cocktails, in a space decorated with rock memorabilia from The Beatles to Oasis and Elvis Presley.

Photo: Hard Rock/Marketing Manchester

Address: The Printworks, Manchester

Opening hours: Sun-Thu noon-10pm, Fri noon-11pm, Sat 11am-11pm

Phone: +44 161 831 6700

Internet: <https://cafe.hardrock.com/manchester>

Email: manchester_social@hardrock.com

Manchester235



Manchester235 is the North West's top destination for entertainment and gaming, housed in the Great Northern

Warehouse. It combines multiple gaming floors featuring slot machines, electronic games, poker tables, and a dedicated Poker Lounge that hosts cash games throughout the week and tournaments on weekends. Upstairs, James Martin Manchester showcases the seasonal, locally sourced cuisine of celebrity chef James Martin, delivering modern British dishes in a sophisticated setting.

Photo: Krzysztof Hepner/unsplash

Address: 2 Watson Street, Manchester

Phone: +44 161 828 0301

Internet: www.manchester235.com

Band on the Wall



Band on the Wall is one of Manchester's longest-running live music venues, with roots stretching back well over a century. Housed in a Victorian pub in the Northern Quarter, it played a key role in the city's punk and post-punk years, with early performances by bands like Buzzcocks, The Fall and Joy Division.

Today, the venue is best known for its broad and carefully curated programme, covering everything from jazz, folk and reggae to global and experimental sounds. The adjoining Picturehouse bar, set in a former cinema, offers a relaxed place for food and drinks before a gig.

Photo: Band on the Wall/Marketing Manchester
Address: 25 Swan Street, Northern Quarter, Manchester
Opening hours: Mon & Tue 5pm-midnight, Wed-Fri 5pm-2am, Sat noon-3am, Sun 1pm-midnight
Phone: +44 161 834 1786
Internet: www.bandonthewall.org

The Deaf Institute



The Deaf Institute is an independent bar, music venue and club spread across three floors just off Oxford Road. Housed in a beautiful Victorian building dating back to 1878, it mixes a relaxed daytime bar with busy gig nights, club evenings and late sessions that stretch into the early hours.

Downstairs, the basement bar has a slightly decadent feel and is often used for club nights, while the main bar upstairs centres around long tables, booth seating and a drinks list that

includes cocktails, local beers and frozen mixes. The first-floor music hall is the real draw here, a ballroom-style space with a domed ceiling, velvet curtains and a large mirror ball, known for hosting live acts, comedy and club nights. Many well-known artists passed through early in their careers, and it remains a strong stop on Manchester's live music circuit.

Photo: The Deaf Institute/Marketing Manchester
Address: 135 Grosvenor Street, Manchester
Internet: www.thedeafinstitute.co.uk

Flight Club



Flight Club is a darts bar that puts a twist on the traditional game, using technology-led scoring and fast-paced multiplayer formats designed for groups. You don't need to be good at darts to enjoy it, which is part of the appeal. Alongside the boards, there's a long bar serving cocktails and beers, plus a menu of sharing plates and pizza paddles.

Photo: Marketing Manchester
Address: Ship Canal House, 98 King Street, Manchester
Opening hours: Sun-Tue 11:30am-midnight, Wed & Thu 11:30am-1am, Fri & Sat 11:30am-2am
Phone: +44 161 537 7250
Internet: www.flightclubdarts.com/location-king-street

Gorilla

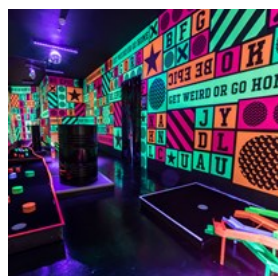


Set beneath the railway arches on Whitworth Street West, Gorilla is a bar, kitchen, live music venue, and late-night club all in one. By day, it's known for breakfasts, burgers and hearty plates, while evenings shift the focus to drinks, gigs and DJs. The industrial setting works in its favour,

with a main bar downstairs and a mezzanine Gin Parlour above for something a bit calmer. It's a regular stop for live shows and club nights, attracting a mixed crowd that keeps the place busy long after dinner service ends.

Photo: Gorilla Manchester/Marketing Manchester
Address: 54-56 Whitworth Street West, Manchester
Phone: +44 161 425 0870
Internet: www.thisisgorilla.com

Junkyard Golf



For a different kind of night out in Manchester, Junkyard Golf combines indoor crazy golf with cocktails and loud playlists. The venue has three themed nine-hole courses built from recycled props and neon-lit scenery, with obstacles that range from the surreal to the outright daft. Music runs most of the night, and bars are spread through the space serving cocktails, simple mixed drinks, and bar snacks.

Photo: Junkyard Golf/Marketing Manchester
Address: 2 First Street, Whitworth Street, Manchester
Internet: www.junkyardgolfclub.co.uk/manchester

Peveril of The Peak



It is said that pub culture is under threat in England, but this does not apply to Manchester. One of the city's best pubs stands in a green-tiled building surrounded by modern office blocks: the 200-year-old Peveril of the Peak.

Inside, it's straightforward and well worn, with snug rooms and a bar that keeps the focus on well-kept beer rather than trends. Locals drop in

for a quick pint, regulars settle in for longer, and the mood rarely changes, whatever the time of day.

Photo: pickpik
Address: 127 Great Bridgewater Street, Manchester
Public Transport: Oxford Road train station
Phone: +44 161 236 6364

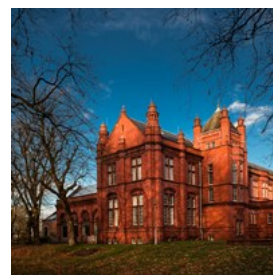
ART & CULTURE



Marketing Manchester

From music and art to theatre and architecture, Manchester's culture is known for its energy and excellence. The UNESCO City of Literature is awash with new and refurbished cultural venues, and Manchester is preparing for the opening of The Factory, the new permanent home for the Manchester International Festival.

The Whitworth



The Whitworth gallery, located within Whitworth Park and part of the University of Manchester, is home to an internationally important collection of more than 60,000 works, including fine art, textiles, wallpapers, and British watercolours. Following a £15 million redevelopment, the gallery now integrates beautifully with the park, featuring an art garden by Sarah Price, a sculpture terrace, an orchard garden, and a café set among the trees.

Photo: SAKhanPhotography/shutterstock
Address: Oxford Road, Manchester
Opening hours: Tue, Wed & Fri-Sun 10am-5pm; Thu 10am-9pm, Mon closed
Phone: +44 161 275 7450
Internet: www.whitworth.manchester.ac.uk
Email: whitworth@manchester.ac.uk

Science & Industry Museum



The Science & Industry Museum explores Manchester's role in industrial, scientific, and technological history. Highlights include the

world's oldest surviving passenger railway station and the first railway warehouse, both dating back to 1830. Visitors can see historic machinery in action, take part in interactive science demonstrations, and enjoy exhibitions that showcase how Manchester helped shape the modern world.

Photo: Marketing Manchester
Address: Liverpool Road, Manchester
Opening hours: Daily 10am-5pm
Phone: +44 330 058 0058
Internet: www.scienceandindustrymuseum.org.uk

The Stoller Hall



Stoller Hall, part of Chetham's School of Music, offers unrivalled acoustics and an eye-catching visual setting for live music,

performances, and events. Its programme ranges from classical and contemporary concerts to jazz, world music, comedy, spoken word, and student performances.

Photo: Marketing Manchester
Address: Hunts Bank, Manchester
Phone: +44 333 130 0967

Internet: www.stollerhall.com

HOME Manchester



HOME is Manchester's centre for contemporary theatre, film and visual art, formed in 2015 from the merger of

Cornerhouse and the Library Theatre Company. It offers independent cinemas, galleries, theatre stages, a bookshop, and a café bar. HOME hosts a mix of international and local work, from cutting-edge theatre and live music to contemporary art exhibitions and independent films.

Photo: Marketing Manchester
Address: 2 Tony Wilson Place, Manchester
Phone: +44 161 200 1500
Internet: www.homemcr.org

Royal Exchange Theatre



The Royal Exchange Theatre transforms the way people experience live theatre, staging bold new dramas and fresh takes on classics.

Founded by artists in 1976, the company now produces work in its iconic theatre-in-the-round, on tour, and online.

The building itself is a striking seven-sided, glass-walled capsule suspended within the historic Cotton Exchange. Every seat is less than nine metres from the circular stage, which creates an intimate connection between performers and audience.

Photo: Marketing Manchester
Address: St Ann's Square, Manchester
Phone: +44 161 833 9833
Internet: www.royalexchange.co.uk

Email: comments@royalexchange.co.uk

Castlefield Gallery



Founded in 1984, Castlefield Gallery is at the forefront of supporting emerging artists and new art practice in the UK.

Beyond displaying a diverse range of contemporary art across up to seven temporary exhibitions per year and presenting offsite projects, the gallery runs New Art Spaces (pop-up project spaces for artists and creatives across Greater Manchester) and CG Associates (a professional development scheme for artists, writers, and independent curators).

Photo: Marketing Manchester

Address: 2 Hewitt Street, Knott Mill, Manchester

Opening hours: Wed-Sun noon-5:30pm, Mon & Tue closed

Phone: +44 161 832 8034

Internet: www.castlefieldgallery.co.uk

Manchester Central Library



Manchester Central Library is the city's iconic library, designed by E. Vincent Harris and opened in 1934.

Following a £50m refurbishment in 2010, taking four years, the Grade II listed building has been brought into the 21st century by combining historic features with cutting-edge design. Explore previously hidden heritage spaces and the impressive Wolfson Reading Room, a highlight of the refurbishment.

Photo: Marketing Manchester

Address: St Peter's Square, Manchester

Phone: +44 161 234 1983

Internet: www.manchester.gov.uk/centrallibrary

Portland Basin Museum



Portland Basin Museum sits on the waterside in Ashton-under-Lyne, Tameside, celebrating the people, events and industries that have

shaped the area over the last 200 years. The heritage centre includes exhibitions in a restored building, featuring a recreated 1920s street, industrial artefacts, and displays that bring the region's history to life.

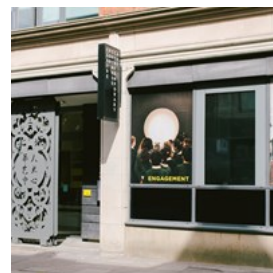
Photo: Marketing Manchester

Address: Portland Place, Ashton-under-Lyne, Tameside, Greater Manchester

Opening hours: Tue-Sun 10am-4pm, Mon closed

Phone: +44 161 342 5480

esea contemporary



The groundbreaking esea contemporary is the UK's unique non-profit art centre spotlighting artists influenced by East and Southeast Asian cultures.

Nestled in Manchester, a city with a populous East Asian demographic, esea contemporary has evolved from a community arts festival in 1986 to a dynamic hub for cultural exchange in the art scene. More than a gallery, it hosts a variety of initiatives from exhibitions and commissions to residencies and public events, all while championing creativity, compassion, and community.

Photo: Marketing Manchester

Address: 13 Thomas Street, Northern Quarter, Manchester

Opening hours: Mon-Fri 10am-5pm, Sat & Sun closed

Phone: +44 161 832 7271

Internet: www.eseacontemporary.org

More Info: Formerly known as the Centre for Chinese Contemporary Art

Working Class Movement Library



The Working Class Movement Library in Salford preserves over two centuries of campaigning for social and political reform, built from the personal collection of Ruth and Edmund Frow. The archive includes books, pamphlets, visual media, and ephemera that document the stories of activists and ordinary people, from Peterloo and conscientious objectors in WWI to volunteers in the Spanish Civil War and mass demonstrations during the Great Depression.

Photo: Marketing Manchester

Address: 51 The Crescent, Salford, Greater Manchester

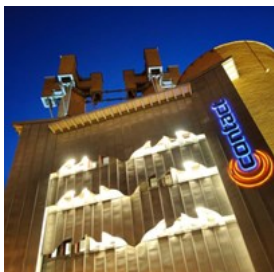
Phone: +44 161 736 3601

Tickets: Free entrance.

Internet: www.wcml.org.uk

Email: enquiries@wcml.org.uk

Contact Theatre



Contact Theatre is Manchester's innovative performance venue on the Oxford Road Corridor, renowned for its bold programming and commitment to young people. Teenagers and young adults help shape the theatre's schedule, which includes theatre, dance, spoken word, music, comedy, and visual art. The building's distinctive towers make it one of the city's architectural landmarks.

Photo: Marketing Manchester

Address: Oxford Road, Manchester

Internet: www.contactmcr.com

More Info: Only a short walk from both Manchester Museum and The Whitworth.

Gallery Oldham



Gallery Oldham is a public museum and art gallery in Oldham (about 30 minutes by train from Manchester), free to enter and housing a mix of fine art, natural history, social history objects, and contemporary exhibitions.

Inside, the permanent exhibition Oldham Stories brings together items from the gallery's collections, from taxidermy and fossils to industrial artefacts, ceramics, historic photographs, and paintings. The gallery also hosts rotating shows of contemporary art, community-led projects, international exhibitions, and work by local artists. Talks, workshops, and activities for families, schools, and adults are held regularly.

Photo: Marketing Manchester

Address: 35 Greaves Street, Oldham

Opening hours: Tue-Sat 10am-5pm, Sun & Mon closed

Phone: +44 161 770 8000

Internet: www.instagram.com/galleryoldham

Elizabeth Gaskell's House



Elizabeth Gaskell's House is the restored home of the celebrated Victorian novelist, where she lived from 1850 to 1865.

Visitors can explore four period rooms, learn about Elizabeth and William Gaskell's lives, and discover the Manchester that inspired her novels.

The house also features exhibitions, a recreated garden, and a tea room in the old kitchen and servants' hall, serving cakes and hot drinks in traditional china. Knowledgeable volunteers offer

guided tours, sharing stories of the family, the restoration process, and the daily life of the household.

Photo: Marketing Manchester

Address: 84 Plymouth Grove, Manchester

Opening hours: Wed, Thu & Sun 11am-4:30pm

Phone: +44 161 273 2215

Internet: www.elizabethgaskellhouse.co.uk

The Lowry



The Lowry is a landmark arts centre at Salford Quays, home to two theatres and galleries exhibiting works by LS Lowry alongside

contemporary art from around the world. The theatres host a mix of performances, from West End musicals and drama to live music, comedy, dance, and opera, attracting both local and international talent.

The galleries feature a rotating programme of exhibitions, so there's always something new and refreshing to see, whether it's Lowry's iconic paintings or modern sculpture and photography.

Photo: SAKhanPhotography/shutterstock

Address: Pier 8, The Quays, Salford

Phone: +44 161 876 2000

Internet: <https://thelowry.com>

People's History Museum



The People's History Museum tells the story of democracy and the fight for equality in the UK. Visitors can explore

banners, documents, and exhibits that celebrate the reformers, workers, and voters who shaped modern Britain. The

museum includes main galleries, a Changing

Exhibition Gallery, and a Community Gallery, all with hands-on displays and activities for children. There's also a shop with books and gifts, and the on-site café bar, The Left Bank, for a bite to eat.

Photo: BearFotos/shutterstock

Address: Leftbank, Manchester

Opening hours: Wed-Mon 10am-5pm, Tue closed

Phone: +44 161 838 9190

Internet: <https://phm.org.uk>

Email: info@phm.org.uk

Manchester Art Gallery



The Manchester Art Gallery is one of the country's finest art museums, boasting fantastic collections that mix the very best of contemporary art with long-standing artistic traditions, spanning six centuries. The museum curators acknowledge that most of the pieces in their collection represent the point of view of the "old white men", and they try to course correct with more alternative temporary exhibitions.

Photo: Alastair Wallace/shutterstock

Address: Mosley Street, Manchester

Opening hours: Tue-Sun 10am-5pm, Mon closed

Phone: +44 161 235 8888

Internet: www.manchesterartgallery.org

Email: manchesterartgallery@manchester.gov.uk

Manchester Museum



Manchester Museum houses nearly six million objects spanning natural history, anthropology, archaeology, and botany. Highlights include one of the UK's largest collections of ancient Egyptian artefacts, a Vivarium with live animals, and

displays covering global cultures and local history. The museum also runs regular exhibitions, talks, and activities for visitors of all ages.

Photo: Alastair Wallace/shutterstock
Address: Oxford Road, Manchester
Opening hours: Tue, Thu & Fri 10am–5pm; Wed 10am–9pm; Sat 8am–5pm; Sun 10am–5pm; Mon closed
Phone: +44 161 275 2648
Internet: www.museum.manchester.ac.uk
Email: museum@manchester.ac.uk

SHOPPING



Marketing Manchester

Manchester has become northern England's shopping capital, offering variety, quality, and bargains. From large shopping centres like Manchester Arndale and the Trafford Centre to the pedestrian boutique districts and markets dotting the city, to the unique items found at the Manchester Craft and Design Centre, shoppers will be spoilt for choice with everything from designer fashion to local handicrafts on offer.

Manchester Arndale



Manchester Arndale is the city centre's main shopping hub, bringing together a wide mix of high-street fashion, beauty stores, food outlets, and everyday essentials under one roof,

and it's hard to miss if you spend time downtown.

Photo: Manchester Arndale/Marketing Manchester
Address: Market Street, Manchester
Opening hours: Mon–Sat 9am–8pm, Sun 11:30am–5:30pm
Phone: +44 161 833 9851
Internet: <https://manchesterarndale.com>
Email: info@manchesterarndale.com

Northern Quarter



The Northern Quarter is Manchester's focal point for independent shops, street fashion, and creative finds. Oldham Street is the main artery,

with shops like Arc Gallery Store showcasing work by young designers and artists. There are also small record shops, interior design stores, and vintage outlets. Artisans work at the Manchester Craft and Design Centre on Oak Street, while Afflecks on Church Street is home to some of the city's leading independent names across four floors of eclectic fashion, gifts and unique finds.

Photo: Marmalade Photos/shutterstock
Internet: www.northernquartermanchester.com

Trafford Centre



The Trafford Centre is a large shopping and leisure complex to the west of Manchester, world-renowned as one of the UK's largest

destinations of its kind. It brings together more than 200 shops alongside restaurants, cafés, a cinema and entertainment venues.

Photo: Trafford Centre/Marketing Manchester
Address: Barton Dock Road, Stretford, Manchester

Opening hours: Mon-Fri 10am-10pm, Sat 10am-9pm, Sun noon-6pm

Phone: +44 161 749 1717

Internet: www.traffordcentre.co.uk

Manchester Craft and Design Centre



Manchester Craft and Design Centre is a former Victorian fish market in the Northern Quarter, now home to working studios and shops run by

independent designers and makers. Spread across two levels beneath a large glass roof, it showcases jewellery, ceramics, textiles, furniture, and clothing, all made and sold on site. Many of the makers are usually around, so it's easy to see work in progress or talk through a piece before buying.

Photo: Maksim Toome/shutterstock

Address: 17 Oak Street, Manchester

Phone: +44 161 832 4274

Internet: www.craftanddesign.com

Email: contactus@craftanddesign.com

Designer Outlet Cheshire Oaks



Cheshire Oaks, just outside Chester in Cheshire, is the UK's largest designer outlet, with over 145 shops, restaurants and cafés

spread across a pedestrianised, village-style site. It offers a mix of high-street and designer labels, from Nike and Marks & Spencer to Burberry, Polo, Michael Kors, and Hugo Boss.

Photo: Cheshire Oaks/Marketing Manchester

Address: Kinsey Road, Wirral

Phone: +44 151 348 5600

Internet: www.mcarthurglen.com/en/outlets/uk/designer-outlet-cheshire-oaks

Spinningfields



One of the city's most vibrant neighbourhoods, Spinningfields is a thriving hub for work, rest, and play. Home to some of Manchester's

most popular bars, restaurants, and shops, Spinningfields is also the biggest commercial district in the city, housing some of the largest corporations in the North West.

Located on the River Irwell, Leftbank encompasses some of the best casual dining Manchester has to offer, including The Kitchens street food collective. Leftbank is a celebration of all things innovative and independent, and the go-to alfresco location for food and drink.

Spinningfields is also home to The Avenue, which has an impressive array of luxury stores and beauty salons, plus some of the most exciting eateries in the city.

Photo: Marketing Manchester

Address: Hardman Boulevard, Manchester

Internet:

www.visitmanchester.com/listing/spinningfields/32056101

Harvey Nichols



Harvey Nichols boasts the crème de la crème of what's hot in fashion, food, and beauty. With leading luxury fashion brands including Dolce

and Gabbana, Christian Louboutin and Givenchy, there's no other place in the city to shop for your new season wardrobe. Beauty addicts will love the offerings spread across two floors of this luxurious store.

Take a break from shopping and indulge at the Second Floor Restaurant, Bar and Brasserie for cocktails, a light lunch, afternoon tea or a gourmet meal. In addition, the Foodmarket offers a selection of the finest food produce from around the world, along with an extensively stocked Wineshop.

Photo: Harvey Nichols/Marketing Manchester
Address: 21 New Cathedral Street, Manchester
Phone: +44 161 828 8888
Internet: www.harveynichols.com/store/manchester

Royal Exchange Manchester



Once the hub of the world's cotton trade, The Royal Exchange Manchester is now an eclectic collection of luxury retailers, premium high street brands and best-in-class independent boutique shops playing a key role in Manchester's thriving shopping and lifestyle culture.

Situated in the heart of the city, looking out onto St Ann's Square, The Royal Exchange Manchester is in close proximity to Manchester Arndale as well as luxury stores such as Selfridges, Harvey Nichols and House of Fraser, with many of Manchester's hotels, restaurants, and cafés nearby.

Photo: Angelina Dimitrova/shutterstock
Address: St Anns Square, Manchester
Phone: +44 161 833 9833
Internet: www.royalexchange.co.uk
More Info: The building is also home to the much-loved Royal Exchange Theatre.

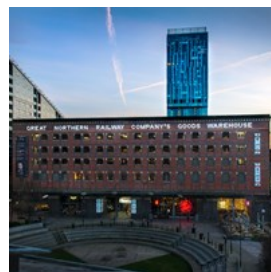
Stockport Market



Located just south of Manchester in Greater Manchester, Stockport Market has been trading in some form for over 700 years, with the current glass-and-iron market hall dating back to 1861. Today, it's home to more than 50 independent traders selling everything from fresh produce and street food to beer, vintage finds, and everyday essentials. It's a good spot to browse at your own pace, pick up something unexpected, and see a more local side of the area away from central Manchester.

Photo: Stockport Market/Marketing Manchester
Address: Unit 16, Indoor Market, Unit 6 Market Place, Stockport
Opening hours: Tue, Thu-Sat 9am-4:30pm
Internet: www.thestockportmarket.co.uk

Great Northern



The Grade II-listed Great Northern building on Deansgate was once a railway goods warehouse and is now a mixed-use development with shops, bars, restaurants, a cinema, a casino, a bowling alley, and a health club. Outside, a small landscaped square gives a breather from the surrounding city streets and leads into the shops, bars, and restaurants.

Photo: Marketing Manchester
Address: 235 Deansgate, Manchester
Phone: +44 161 832 8136
Internet: www.thegreatnorthern.com

EVENTS & FESTIVALS



Marketing Manchester

As one of the most vibrant and cosmopolitan cities in the UK, there's always something on in Manchester. With a rolling calendar of events, festivals, exhibitions, concerts, and theatre, you'll never be stuck for world-class entertainment.

Manchester Craft Beer Festival (May)



Manchester Craft Beer Festival, Manchester's only city-wide beer festival, allows you to explore Manchester's thriving artisanal beer scene, alongside food, art, and music.

Photo: Manchester Beer Week/Marketing Manchester
Address: Depot Mayfield, 11 Baring Street, Manchester
Internet: <https://manchestercraftbeerfestival.com>
Email: info@manchestercraftbeerfestival.com

Manchester International Festival (July)



Manchester International Festival (MIF) is the world's first festival of original, new work and special events, held every two years in Manchester.

Since its launch in 2007, it has premiered works by artists such as Björk, Steve McQueen, Wayne McGregor, Maxine Peake, The xx, and Marina

Abramović.

Photo: Manchester International Festival/Marketing Manchester
Address: Various locations across Manchester
Opening hours: End of June to mid-July
Internet: <https://factoryinternational.org>

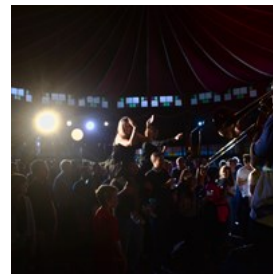
Manchester Film Festival (March)



Manchester Film Festival is a truly independent film festival, committed and dedicated to sharing great stories from both new and established international and domestic filmmakers from the world of independent cinema.

Photo: Manchester Film Festival/Marketing Manchester
Address: Odeon Manchester, Great Northern, Manchester
Internet: www.manchesterfilmfestival.com

Manchester Jazz Festival (May)



The award-winning Manchester Jazz Festival (MJF) is back in the city every May. The main festival hub will now run the length of St Ann's Square to New Cathedral Street with a host of free music stages and bars. As always, gigs will also be staged in venues across the city.

Photo: Marketing Manchester
Address: St Anns Square, New Cathedral Street, Manchester
Phone: +44 161 393 4367
Internet: <https://manchesterjazz.com>

Manchester Pride (August)



Manchester Pride is the charity that runs Manchester's annual LGBTIQ+ celebration, The Manchester Pride Festival. The charity exists to celebrate queer life, campaign for greater LGBTIQ+ equality, and create opportunities for engagement for queer people in Greater Manchester. The Manchester Pride Big Weekend incorporates The Big Weekend at Manchester's world-famous Gay Village, The Manchester Pride Parade on the streets of the City Centre, and The Candlelit Vigil in Sackville Park.

Photo: Marketing Manchester

Internet: www.instagram.com/manchesterpride

Parklife Festival (June)



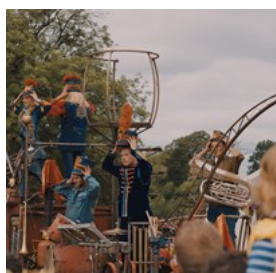
The much-loved Parklife music festival takes place in Heaton Park every June. Prepare for two days of vibrant energy, showcasing over 200 live acts and DJs from around the world. It's a dance and electronic music extravaganza, but there's also plenty for pop and hip-hop fans to enjoy.

Photo: Marketing Manchester

Address: Heaton Park, Prestwich, Manchester

Internet: <https://parklife.uk.com>

Just So Festival (August)



With a love of stories and childhood escapades at its heart, Just So Festival enables families to step out of their day-to-day lives and into a

wonderland of world-class literature, arts, theatre, dance, music, comedy and creative pursuits together. Underpinned by the Carnival of the Animals, the most bonkers competition in the land, it takes audiences (from bumps to great grandparents) on a unique expedition of mischief and mayhem, to lands full of magical midnight feasts, curious creatures, raucous pillow fights, hidden retreats, top-notch food, drink and boutique camping options and breathtaking beauty.

Photo: Wild Rumpus/Marketing Manchester

Address: Rode Hall Estate, Scholar Green, Cheshire

Internet: <https://justsofestival.org.uk>

Email: hello@justsofestival.org.uk

Lanterns & Light at Chester Zoo (November & December)



Every winter holiday season, get ready to enter the mesmerising, fantastical worlds, bursting with colour and brimming with animal-inspired illuminations and traditional festive scenes. It's an experience that will leave you with that cosy, warm glow inside. Colourful Butterfly Garden, the authentic allure of Nordic markets, twinkling Christmas trees and a magical ice kingdom — all uniting with our favourite animal lanterns from Christmases past.

Photo: Marketing Manchester

Address: Chester Zoo, Caughall Road, Upton, Chester, Cheshire

Internet:

www.chesterzoo.org/events/the-lanterns-at-chester-zoo

TOURIST INFORMATION



Madrugada Verde/shutterstock

Manchester Airport (MAN)



Manchester Airport lies around 14-15 km south of central Manchester, about a 20- to 25-minute drive in normal traffic.

Travellers can reach the city by train, with frequent services from Manchester Airport station to central hubs like Piccadilly in roughly 20 minutes. The Metrolink tram also connects the airport with parts of Manchester, while buses and coaches provide additional options. Taxis and ride-sharing services are available 24/7.

Photo: Hufton and Crow/Marketing Manchester

Internet: www.manchesterairport.co.uk

Passport/Visa



Starting from January 8, 2025, the United Kingdom has introduced an Electronic Travel Authorization (ETA) requirement for

visa-exempt travellers. Initially, this applies to citizens from countries such as the United States, Canada, Australia, Japan, and others.

From April 2, 2025, this requirement will extend to European Union (EU) and European Economic Area (EEA) citizens, including those from Iceland, Liechtenstein, Norway, and Switzerland.

The ETA permits short-term visits of up to six months for tourism. Travellers must apply for the ETA online or via a mobile app before their trip. The process involves providing personal details, passport information, and answering a series of questions. The ETA costs £10 and is valid for two years, or until the passport expires, whichever comes first. Most applications are processed within three working days, but it's advisable to apply well in advance of travel.

However, those travellers planning to work or study in the UK for more than six months will need to obtain the appropriate visa. It's essential to consult the UK Government's official website to understand the specific requirements and to ensure a smooth journey.

Please note that the ETA does not guarantee entry into the UK; border officials retain the authority to grant or deny admission upon arrival.

Photo: maramade/shutterstock

Internet: www.gov.uk/uk-border-control

Public Transport



Manchester's public transport network is modern, extensive, and well-suited to visitors.

The city is served by buses, the Metrolink light-rail trams, and national rail services, all coordinated by Transport for Greater

Manchester (TfGM). Trams and buses cover the city centre and suburbs, while trains provide easy access to surrounding towns.

For travellers, the Bee Network system offers simple contactless payment across buses and trams, with daily and weekly fare caps to keep journeys affordable. Tickets include single fares, day passes, and multi-modal passes combining bus and tram travel, along with weekly or 28-day options for longer stays.

Having said that, many of Manchester's main attractions, shopping areas, and cultural spots are within easy walking distance, so exploring on foot is often just as convenient, and a great way to take in the city's architecture, street art, and lively atmosphere.

For information on routes, fares, and timetables, visit TfGM's official website.

Photo: Marketing Manchester
Internet: <https://tfgm.com>

Taxi



Taxis are easy to find in Manchester, with both licensed black-cab 'hackney carriages' and private-hire vehicles available. Hackney cabs can be hailed on the street or found at taxi ranks, while private-hire cars must be pre-booked. Ride-sharing apps such as Uber and Bolt also operate throughout the city, providing a convenient alternative for on-demand travel.

Photo: Magdalena Paluchowska/shutterstock

Post



Postage stamps are available across Manchester at post offices, newsagents and supermarkets. To post a package or small

souvenirs, drop into a post office — you can find your nearest branch on their official website. Post offices are generally open Monday-Friday from 9am to 5:30pm and Saturday from 9am to 12:30pm.

Photo: Lina Kivaka/pexels

Address: Arndale Centre Post Office, Arndale Shopping Centre, Corporation Street, Manchester

Opening hours: Mon-Fri 6am-10pm, Sat 8am-10pm, Sun 9am-8pm

Phone: +44 345 722 3344

Internet:

www.postoffice.co.uk/branch-finder/4744225/arndale-centre

Pharmacy



Whether you need to buy over-the-counter medication or collect a prescription, there are plenty of pharmacies all over the capital. Boots and Superdrug are two big chemist chains. You will also find pharmaceutical products at some of the larger supermarket branches.

Photo: Vladislav Bychkov/unsplash

Address: Cameolord Pharmacy, 16 Oxford Street, Manchester

Opening hours: Daily 8am-midnight

Phone: +44 161 236 1445

Internet:

www.nhs.uk/service-search/pharmacy/find-a-pharmacy

Telephone



Country code: +44 Area
code: (0)161

Photo: Jack Finnigan/unsplash

Electricity



Electrical appliances are connected to the UK mains supply using a three-pin plug known as plug type G. The sockets come with on-and-off switches, unlike in many other countries.

The average voltage of a UK power socket is 230v or slightly higher, so check the voltage of your device before plugging it in.

Photo: Idyshah/pixabay

Population

Greater Manchester: 2.83 million (2025)
City: 590,000 (2025)

Currency

British Pound (£)

Internet

www.visitmanchester.com

Newspapers

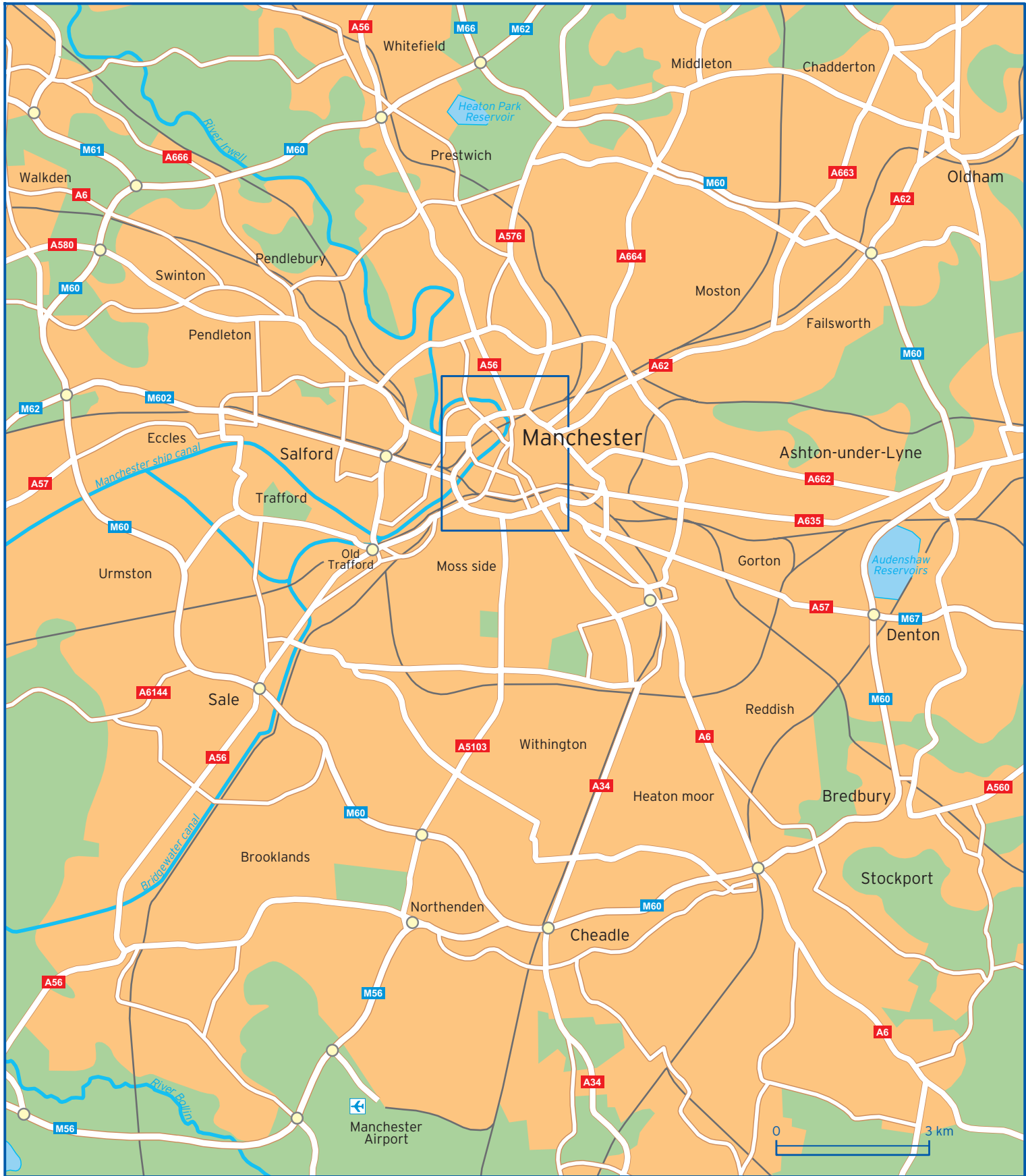
Manchester Evening News:
www.manchestereveningnews.co.uk
Metro: www.metro.co.uk/tag/manchester

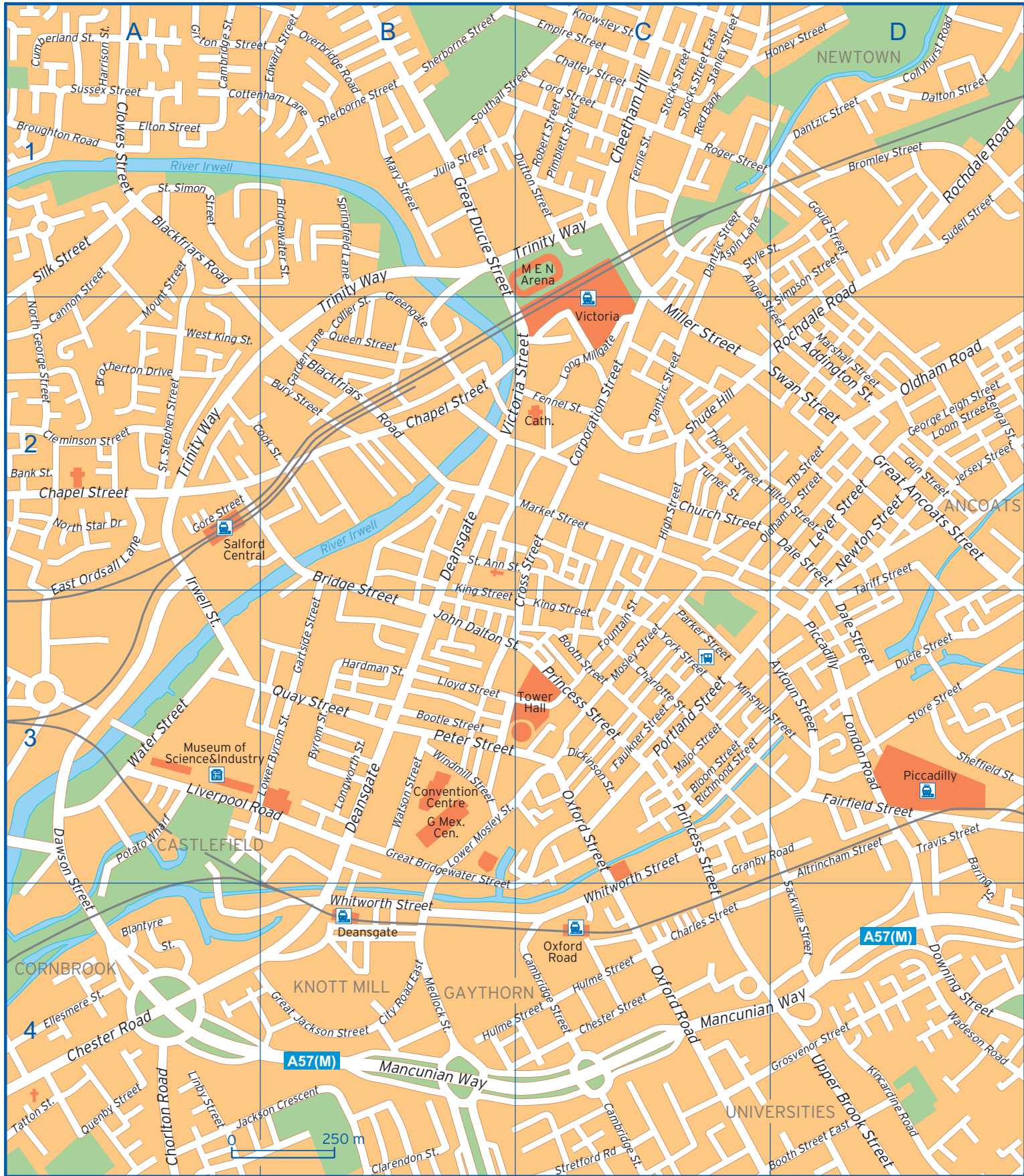
Emergency numbers

112
999

Tourist information

Manchester Visitor Information Centre
Manchester Central Library, St Peter's Square
Opening hours: Mon–Sat 9am–5pm, Sun closed





Addington Street	D2	Downing Street	D4	Lord Street	C1
Altrincham Street	D3	Ducie Street	D3	Lower Byrom Street	B3
Angel Street	C1 D2	Dutton Street	B1 C1	Lower Mosley Street	B3
Aspin Lane	C1	East Ordsall Lane	A2 A3	Major Street	C3
Aytoun Street	C3 D3	Edward Street	B1	Mancunian Way	B4 C4 D4
Bank Street	A2	Ellesmere Street	A4	Market Street	C2
Baring Street	D3 D4	Elton Street	A1	Marshall Street	D2
Bengal Street	D2	Empire Street	C1	Mary Street	B1
Blackfriars Road	A1 B2	Fairfield Street	D3	Medlock Street	B4
Blantyre Street	A4	Faulkner Street	C3	Miller Street	C2
Bloom Street	C3	Fennel Street	C2	Minshull Street	C3 D3
Booth Street	C3	Fernie Street	C1	Mosley Street	C3
Booth Street East	D4	Fountain Street	C3	Mount Street	A1 A2
Bootle Street	B3	Garden Lane	B2	Newton Street	D2
Bridge Street	B2 B3	Gartside Street	B3	North George Street	A2
Bridgewater Street	B1	George Leigh Street	D2	North Star Drive	A2
Bromley Street	D1	Girton Street	A1 B1	Oldham Road	D2
Brotherton Drive	A2	Gore Street	A2	Oldham Street	C2 D2
Broughton Road	A1	Gould Street	D1	Overbridge Road	B1
Bury Street	B2	Granby Road	C3 D3	Oxford Road	C4
Byrom Street	B3	Great Ancoats Street	D2	Oxford Street	C3
Cambridge Street	A1 C4	Great Bridgewater Street	B3 B4	Parker Street	C3
Cannon Street	A1 A2	Great Ducie Street	B1 B2	Peter Street	B3
Chapel Street	A2 B2	Great Jackson Street	B4	Piccadilly	D3
Charles Street	C4	Greengate	B2	Pimblett Street	C1
Charlotte Street	C3	Grosvenor Street	D4	Portland Street	C3
Chatley Street	C1	Gun Street	D2	Potato Wharf	A3
Cheetham Hill	C1	Hardman Street	B3	Princess Street	C3 C4
Chester Road	A4	Harrison Street	A1	Quay Street	B3
Chester Street	C4	High Street	C2	Queen Street	B2
Chorlton Road	A4	Hilton Street	C2 D2	Quenby Street	A4
Church Street	C2	Honey Street	C1 D1	Red Bank	C1
City Road East	B4	Hulme Street	B4 C4	Richmond Street	C3
Clarendon Street	B4	Irwell Street	A2 A3	Robert Street	C1
Cleminson Street	A2	Jackson Crescent	A4 B4	Rochdale Road	D1 D2
Clowes Street	A1	Jersey Street	D2	Roger Street	C1
Collier Street	B2	John Dalton Street	B3 C3	Sackville Street	D3 D4
Collyhurst Road	D1	Julia Street	B1	Sheffield Street	D3
Cook Street	A2 B2	Kincardine Road	D4	Sherborne Street	B1
Corporation Street	C2	King Street	B3 C3	Shude Hill	C2
Cottenham Lane	A1 B1	Knowsley Street	C1	Silk Street	A1
Cross Street	C2 C3	Lever Street	D2	Simpson Street	D1 D2
Cumberland Street	A1	Linby Street	A4	Southall Street	B1 C1
Dale Street	D2 D3	Liverpool Road	A3 B3	Springfield Lane	B1
Dalton Street	D1	Lloyd Street	B3	St. Ann Street	B2 C2
Dantzig Street	C1 C2 D1	London Road	D3	St. Simon Street	A1
Dawson Street	A3 A4	Long Millgate	C2	St. Stephen Street	A2
Deansgate	B2 B3	Longworth Street	B3	Stanley Street	C1
Dickinson Street	C3	Loom Street	D2	Stocks Street	C1

Stocks Street East	C1	Tatton Street	A4	Wadson Road	D4
Store Street	D3	Thomas Street	C2	Water Street	A3
Stretford Road	C4	Tib Street	D2	Watson Street	B3
Style Street	C1 D1	Travis Street	D3	West King Street	A2
Sudell Street	D1	Trinity Way	A2 B1 B2 C1	Whitworth Street	B4 C3 C4
Sussex Street	A1	Turner Street	C2	Windmill Street	B3
Swan Street	C2 D2	Upper Brook Street	D4	York Street	C3
Tariff Street	D2 D3	Victoria Street	B2 C2		