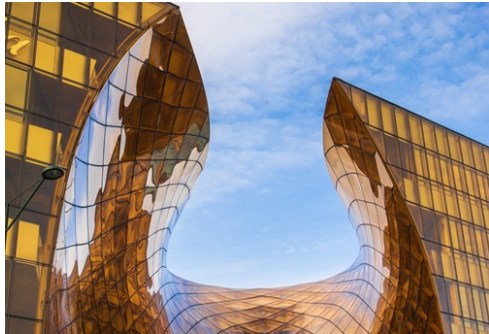




# Malmö

Photo: Vytautas Butkus/Unsplash



Axel Josefsson/Unsplash



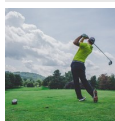
Maria Bobrova/Unsplash



Fredrik Johansson / Malmö Turism

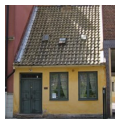
Sweden's third-largest city, Malmö, is a vibrant and multicultural destination. Here historical charm mingles with modern innovation and centuries-old architecture shares the stage with cutting-edge design. Discover world-class museums, cultural events, and find serenity amidst its abundant green spaces. Malmö's commitment to sustainability permeates every facet of life, creating a harmonious coexistence between nature and urban innovation. Prepare to be captivated by the Scandinavian allure and warm hospitality of Malmö, a city that leaves an everlasting impression on every visitor.

## Featured



### Golf Courses

Skåne County offers the perfect setting for year-round golfing experiences. ...



### Ebba's House

Ebba's House is a fascinating museum, which stands as a testament to the pas...



### Vattenhallen Science Center

Just a short 20-minute drive from Malmö, in the charming city of Lund, lies ...



### Skånes Dansteater

The body expresses what words cannot. Skånes Dansteater is Sweden's largest ...



### Katrinetorp

On the outskirts of Malmö lies a rural oasis that emanates a sense of peace ...

## Top 5



### Malmö Museum

Southern Sweden's largest museum is located on Malmöhusvägen in the heart of...



### Malmö's Beautiful Parks

Whether you're seeking tranquility, ecological marvels, or invigorating exe...



### Turning Torso

The Turning Torso is a neo-futurist skyscraper designed by Spanish architect...



### Malmö Konsthall

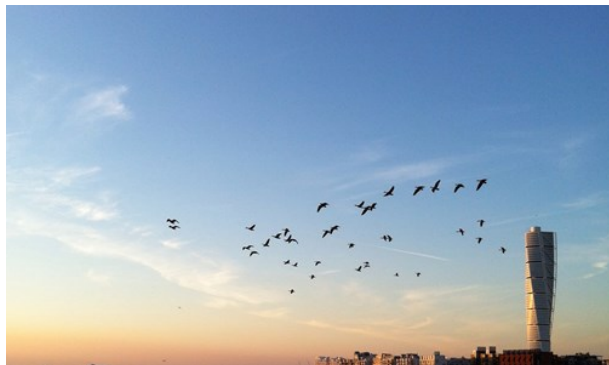
Malmö Konsthall, one of the largest exhibition halls for contemporary art in...



### The Western Harbour

Just a ten-minute walk from the Malmö Central Station, the Western Harbour (...)

## THE CITY



Malmö Turism

Malmö, originally founded in the late 1200s, was initially governed by the Danish crown, and it wasn't until 1658 that the city transitioned into Swedish control. Nevertheless, the process of integration and reaping the benefits of this shift took nearly two centuries.

Once a thriving industrial city, Malmö faced a period of decline following the downturn of its shipbuilding industry in the early 1970s. This resulted in emigration and a loss of confidence. However, in recent years, Malmö has experienced a remarkable resurgence. The Öresund Bridge, reconnecting the city with Denmark, opened in June 2000, breathing new life into the region. The following year, the Housing Exhibition transformed Malmö's waterfront, and the iconic Turning Torso, one of Europe's tallest and most awe-inspiring apartment buildings, was erected in the old shipyard district, attracting large numbers of fascinated spectators.

Malmö is blessed with an abundance of parks, where locals and visitors can enjoy leisurely picnics and relaxing strolls. Kungsparken and Slottsparken are popular choices, while Pildammsparken features expansive open spaces and two large lakes teeming with diverse birdlife.

For a lively and vibrant experience, Möllevångstorget is the place to be, with its bustling open market offering a wide variety of goods. This vibrant square, known as "Möllan," is also a culinary hub, boasting a dense concentration of eateries that cater to all tastes.

Party-goers will find several clubs in the Möllevången area, each with its own distinct musical offerings. Well-known establishments such as Kulturbolaget, Babel, and Moriskan are among the hotspots for nightlife.

Malmö's culinary scene is a melting pot of flavours from around the world, with a rich variety of restaurants to choose from. The city also thrives with cultural experiences, including performances, art galleries, and museums. In recent years, Malmö has constructed two large stadiums, Malmö Arena and Eleda Stadium, hosting various public events and sporting activities.

## DO & SEE



Malmö Turism

Malmö has earned a well-deserved reputation for its diverse and sophisticated art and cultural scene. Here, you will find a plethora of enriching experiences suitable for the whole family. The city takes pride in its extensive investment in a wide range of cultural offerings, encompassing

both prominent institutions and numerous smaller operators and activities. Moreover, Malmö showcases the finest examples of Scandinavian and international design, featuring exquisite furniture and furnishings, jewellery, and textiles.

In addition to its vibrant cultural scene, Malmö boasts abundant green spaces both within the city centre and throughout the town. Notable examples include Kungsparken, Slottsparken, and the expansive Pildammsparken. Malmö Folkets Park is Sweden's oldest "folkpark" and offers beautiful lawns for relaxation, along with cafés, restaurants, a terrarium, adventure golf, horse riding, and live entertainment during the summer season.

Don't forget! Malmö's glorious two-kilometre-long beach Ribbersborg Beach, or "Ribban", is within walking distance from the town centre.

### Malmö Museum



Southern Sweden's largest museum is located on Malmöhusvägen in the heart of Malmö in a beautiful park-like setting surrounded by canals.

Here you can see everything from the Nordic region's oldest surviving Renaissance castle to a real submarine and fantastic vehicles. The museum's permanent exhibitions focus on history, natural history, technology and seafaring. There are also about a dozen temporary exhibitions every year. Next to it is the Fiskehoddorna, a popular seafood market where fresh fish is sold over the counter.

Photo: Malmö Turism

Address: Malmöhusvägen 6, Malmö

Opening hours: Mon closed, Tue & Wed 11am-5pm, Thu 11am-7pm, Fri-Sun 11am-5pm

Phone: +46 40 34 44 00

### Malmö's Beautiful Parks



your desires.

Whether you're seeking tranquility, ecological marvels, or invigorating exercise, Malmö's green areas offer a wealth of experiences to satisfy

Discover the enchanting allure of Kungsparken, Malmö's cherished gem and the city's oldest public park, established in 1872. Immerse yourself in the park's charming English-style design, where strolling amidst the verdant landscapes sets the stage for unforgettable outdoor adventures and delightful picnics.

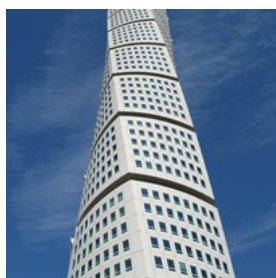
Indulge your senses in the eco-friendly haven of Slottsträdgården, where nature's bounties await. Here, you can immerse yourself in a world of freshness, purchasing vegetables plucked straight from the fertile soil, vibrant flowers, and plants. Keep an eye out for the bustling activity of SVT's popular TV program, Garden Times, which finds its home within these beautiful gardens. You might even catch a glimpse of the skilled gardener, John Taylor, tending to the blooming wonders. Nestled in the heart of the park, Tareq Taylor's beloved outdoor garden café invites you to unwind amidst the lush surroundings, providing a refreshing retreat during the sun-kissed summer months.

Prepare to be captivated by the grandeur of Pildammsparken, Malmö's largest park. Originally crafted for the Baltic Exhibition in 1914, this expansive landscape was further

perfected in the 1920s under the visionary guidance of city engineer Erik Bülow-Hube. Explore the park's vast expanse and discover some of Malmö's most revered jogging tracks, inviting you to embark on invigorating runs amidst the picturesque scenery.

Photo: Jorchr/cc by-sa 3.0/Wikimedia(image cropped)

### Turning Torso



The Turning Torso is a neo-futurist skyscraper designed by Spanish architect Santiago Calatrava and built in 2005. At 190 metres, it was the tallest building in the Nordic region until September 2022, when it was surpassed by Karlatornet in Gothenburg, which is still under construction.

The Turning Torso consists of nine cubes with a total of 54 floors, where winding from base to peak is 90 degrees. Today, the Turning Torso is a residential building with 147 apartments of various sizes, from one-bedroom studios of 45 square metres to three-bedroom flats of 190 square meters. During the summer you have the opportunity to visit its top floor.

Photo: CC0 Public Domain/Pxhere  
Address: Lilla Varvsgatan 14, Malmö  
Phone: +46 40 17 45 00

### Malmö Konsthall



Malmö Konsthall, one of the largest exhibition halls for contemporary art in Europe, continuously curates art that both challenges and inspires its visitors. Since its inauguration in

1975, architect Klas Anshelm's vision of a "Big low concrete box open to the park and light of the sky" has become a reality, creating a unique space that harmoniously merges art, architecture, and nature.

With its expansive 2,000 square metre exhibition space, Malmö Konsthall provides a platform for three to four exhibitions each year. These carefully curated showcases feature a diverse range of local and international artists, fostering a dynamic exchange of ideas and perspectives. The hall's remarkable flexibility, generous space, and abundant natural light make it an ideal venue to showcase contemporary art in all its forms.

Photo: Malmö Turism  
Address: S:t Johannesgatan 7, Malmö  
Opening hours: Mon closed, Tue 11am-5pm, Wed 11am-7pm, Thu-Sun 11am-5pm  
Phone: +46 40 34 60 00  
Internet: [malmokonsthall.se/en](http://malmokonsthall.se/en)  
Email: [info.konsthall@malmö.se](mailto:info.konsthall@malmö.se)

### The Western Harbour



Just a ten-minute walk from the Malmö Central Station, the Western Harbour (Västra Hamnen) is one of the most sustainable districts in

Malmö, with amazing architecture and a view over the Öresund Bridge. Here, you also find the spectacular 190-metre-high Turning Torso and Stapelbäddsparken, which attracts skateboarders from all over the world. The district offers beautiful walks, bathing facilities, restaurants and cafés, plus lush grass for picnics when the weather allows it. You will also find the Dockan Marina here, with plenty of berths and facilities for guest boats.

Photo: David Castor/public domain/Wikimedia(image cropped)

### Ebba's House



Ebba's House is a fascinating museum, which stands as a testament to the past, preserving a slice of history and offering

visitors a captivating journey into the lives of Malmö's residents from a bygone era.

The house, originally built in the 18th century, was owned by the Olsson family. Ebba and her mother were skilled lace and trimmings makers who worked from home. After her mother's passing, Ebba continued to live alone in the house. In 1984, due to her age, Ebba had to relocate, and she generously donated her home to the Malmö Museum. Following her passing in 1989, the museum acquired her old furniture and restored the house to its original state. In 1991, Ebba's House opened its doors as a local history museum, allowing visitors to step back in time and appreciate the rich cultural heritage of Malmö.

Photo: jorchr/cc by-sa 3.0/Wikimedia(image cropped)

Address: Snapperupsgatan 10, Malmö

Phone: +46 40 34 44 00

### Moderna Museet



The Moderna Museet in Malmö is a branch of the renowned Moderna Museet located in Stockholm. Situated in the heart of Malmö, this

contemporary art museum showcases a diverse range of modern and contemporary artworks. The spectacular building, a former electricity plant dating from the year 1900, already offers

an architectural experience in itself.

Photo: Malmö Turism

Address: Ola Billgrens plats 2-4, Malmö

Opening hours: Mon closed, Tue & Wed 11am-5pm, Thu

11am-7pm, Fri-Sun 11am-5pm

Phone: +46 40 685 79 37

Internet: [www.modernamuseet.se/malmo/en](http://www.modernamuseet.se/malmo/en)

Email: [info.malmo@modernamuseet.se](mailto:info.malmo@modernamuseet.se)

### Malmö Saluhall



The former warehouse on Gibraltargatan has been transformed into a culinary haven for bon viveurs, hungry lunch diners, and passionate cooks. Lunch, dinner, or coffee. Eat in, or buy local ingredients to take home. You'll also find beautiful flower arrangements, exquisite crafts, and unique Scandinavian designs.

Photo: Annie Spratt/Unsplash

Address: Gibraltargatan 6, Malmö

Opening hours: Mon-Thu 11am-8pm, Fri 11am-9pm, Sat &

Sun 11am-5pm

Internet: [www.malmosaluhall.se](http://www.malmosaluhall.se)

Email: [info@malmosaluhall.se](mailto:info@malmosaluhall.se)

### Form/Design Center



At Form/Design Center, visitors can immerse themselves in engaging exhibitions, attend informative seminars, participate in interactive workshops, and join enlightening guided tours in the realm of architecture, design, and crafts.

Photo: Malmö Turism

Address: Lilla Torg 9, Malmö

Opening hours: Mon closed, Tue-Sat 11am-5pm, Sun

noon-4pm

Phone: +46 40 664 51 50

Internet: [formdesigncenter.com/en](http://formdesigncenter.com/en)

Email: [form@formdesigncenter.com](mailto:form@formdesigncenter.com)

## Malmö Opera



The Malmö Opera showcases a diverse repertoire of music theatre, with a primary focus on opera and musicals. The esteemed company presents exceptional performances of beloved opera classics, enchanting musicals, and contemporary musical dramas. Furthermore, Malmö Opera is committed to promoting newly composed Swedish operas and musicals, constantly striving to support and showcase fresh talents in the field.

Photo: Malmö Turism

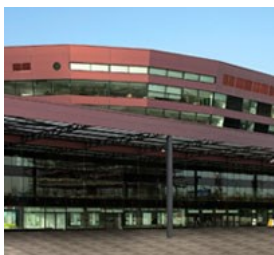
Address: Östra Rönneholmsvägen 20, Malmö

Phone: +46 40 20 85 00

Internet: [www.malmoopera.se](http://www.malmoopera.se)

Email: [info@malmoopera.se](mailto:info@malmoopera.se)

## Malmö Arena



Serving the rapidly growing and dynamic Öresund Region, Malmö Arena is the premier venue in the region for world-class sporting events, concerts, family shows, full-scale conferences and smaller meetings, wining and dining, or a quick snack.

Photo: Malmö Turism

Address: Hyllie Stationstorg 2, Malmö

Phone: +46 40 642 04 00

Internet: [www.malmoarena.com/en](http://www.malmoarena.com/en)

Email: [info@malmoarena.com](mailto:info@malmoarena.com)

## Boat Sightseeing



Experience Malmö's waterfront vistas with "Rundan", Strömma's sightseeing boats, and embark on a captivating canal sightseeing journey.

Glide beneath bridges, traverse parks, and delve into Malmö's rich history, architectural marvels, and intriguing anecdotes as your knowledgeable guide brings the city to life.

Photo: Malmö Turism

Address: Norra Vallgatan 60, Malmö

Internet: [www.stromma.com/en-se/malmo](http://www.stromma.com/en-se/malmo)

## Katrinetorp



On the outskirts of Malmö lies a rural oasis that emanates a sense of peace and harmony. Katrinetorp, an early 19th-century "landeri"

(country estate), was originally designed as a summer residence and a venue for grand receptions. Today, the city of Malmö runs the place, and they are constantly working on recreating its former glory. Markets, music entertainment, events, and exhibitions are held here annually. It recently opened its new exhibition hall "The Stables," which also has a high-end gift shop. Katrinetorp lies 10 minutes from the city centre of Malmö, which makes the big city no more than a stone's throw away from this idyllic scenery.

Photo: Philaweb/cc by 3.0/Wikimedia(image cropped)

Address: Katrinetorps allé 1, Malmö

Opening hours: Daily 8am-8pm

Phone: +46 40 46 71 66

Internet: [www.instagram.com/katrinetorplanderi](http://www.instagram.com/katrinetorplanderi)

## Skånes Dansteater



The body expresses what words cannot. Skånes Dansteater is Sweden's largest independent dance company and offers amazing dance

performances on their own stage in the western harbour front in Malmö, at the Malmö Opera, and on tour. They show dance by both Swedish and international choreographers. The performances at the Malmö Opera are in collaboration with the Opera Orchestra. The theatre is located in the old harbour area, near the sea and several restaurants.

Photo: Malmö Turism

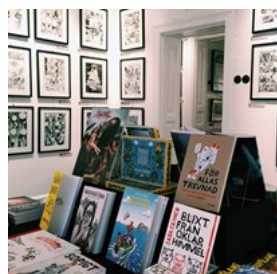
Address: Östra Varvsgatan 13A, Malmö

Phone: +46 70 344 58 11

Internet: [www.skandesdansteater.se/en](http://www.skandesdansteater.se/en)

Email: [info@skandesdansteater.se](mailto:info@skandesdansteater.se)

## Rum för serier



Rum för serier, or "room for comics" in English, is an art gallery dedicated to the world of cartoons in Malmö. This unique space showcases a

diverse collection of comics not only from Sweden but also from various parts of the globe. Plus, a shop where visitors can explore a treasure trove of comic-related merchandise, including books, figurines, posters, and more.

Photo: Malmö Turism

Address: Friisgatan 12, Malmö

Opening hours: Daily 11am-3pm

Phone: +46 40 661 40 74

Internet: [serieframjandet.se/rum-for-serier](http://serieframjandet.se/rum-for-serier)

Email: [info@serieframjandet.se](mailto:info@serieframjandet.se)

## Architecture



Malmö boasts a fascinating blend of architectural styles, heavily influenced by both Denmark and the broader European

context. One noteworthy architectural gem can be found in Kungsparken, where the award-winning City Library stands. This building consists of two interconnected parts — an older section and a newer addition known as "The Calendar", designed by Danish architect Henning Larsen.

Situated just a stone's throw away from the Malmö Central Station, Stortorget is home to the Town Hall. While its original construction dates back to 1546, the building has undergone significant transformations throughout the centuries. Notably, in 1860, architect Helgo Zettervall revamped the façade in the Dutch Renaissance style, lending the Town Hall its distinctive appearance.

Located in another section of the expansive square is Kockska Huset, an exceptionally well-preserved sixteenth-century structure built from red brick and adorned with intricately decorated stepped gables. Today, this building houses one of Malmö's most renowned restaurants, Årstiderna (The Seasons), nestled within its basement vaults.

Just behind the Town Hall, the tip of St Petrikyrkan (St Peter's Church) peeks into view. As Malmö's oldest standing edifice, this architectural marvel dates back to the early 14th century and showcases the Baltic brick Gothic style. In the early 1900s, significant efforts were made to develop and restore the medieval

paintings adorning the church's vaults, adding to its historical and artistic significance.

Photo: Malmö Turism

### Malmö Folkets Park



Malmö's long-standing amusement park offers a variety of experiences for the whole family. Folkets Park boasts a playground, reptile centre, mini-farm, eateries & open-air events, such as markets & concerts.

Photo: Susanne Nilsson/cc by-sa 2.0/Flickr(image cropped)

Address: Amiralsgatan 35, Malmö

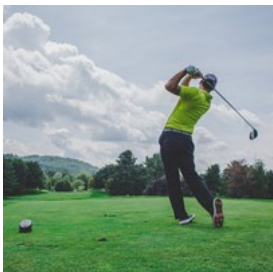
Opening hours: Open 24/7

Phone: +46 40 34 10 00

Internet: malmofolketspark.se

Email: folketspark@malmo.se

### Golf Courses



Skåne County offers the perfect setting for year-round golfing experiences. Using Malmö as your base for a golf vacation, you'll have

the opportunity to explore nearly 100 golf courses within an hour's radius from the city. This allows you to spend your days indulging in your favourite sport, and in the evenings, you can conveniently enjoy Malmö's vibrant restaurant scene and non-stop entertainment, all just a stone's throw away from your hotel.

Below are a few golf courses in the Malmö area:

Hylliekrokens Golf Center

Limhamnsvägen 85, Limhamn

+46 40 16 18 50

Hinton Golf Club - Rönnebäck

Rönnebäcksvägen 3, Oxie

+46 40 54 25 50

Hinton Golf Club - Sofiedal

Vångavägen 33, Oxie

+46 40 54 25 50

PGA of Sweden National

Klubbhuset, Bara

+46 40 635 51 08

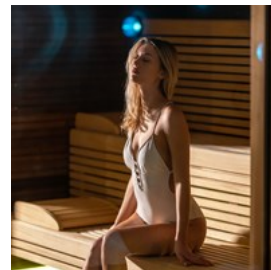
Falsterbo Golfklubb

Fyrvägen 34, Falsterbo

+46 40 47 00 78

Photo: Courtney Cook/Unsplash

### Ribersborgs Kallbadhus



Established in 1898, the Ribersborgs open-air baths have become a beloved attraction for both locals and tourists alike. This idyllic location

offers visitors the perfect opportunity to indulge in saltwater swimming and sauna experiences.

Amidst the peaceful atmosphere, guests can unwind, detoxify, and embrace the soothing warmth of the saunas. And after a refreshing swim or a calming sauna session, guests can savour a cup of coffee or enjoy a meal in its charming café.

Photo: CRYSTALWEED cannabis/Unsplash

Address: Limhamnsvägen, Brygga 1, Malmö

Opening hours: Mon-Fri 9am-9pm, Sat & Sun 9am-6pm

Phone: +46 40 26 03 66

Internet: [www.ribersborgskallbadhus.se](http://www.ribersborgskallbadhus.se)

Email: [info@ribersborgskallbadhus.se](mailto:info@ribersborgskallbadhus.se)

## Biking in Malmö



Discover Malmö on two wheels with a thrilling bicycle adventure. There are over 500 km of well-maintained cycle paths in the city. Rent a bike from Malmö By Bike, the new hire system in Malmö with 50 stations around the city and 500 bikes available for hire. Rent a bike for 24 or 72 hours and download the Malmö By Bike app, which provides detailed guidance on locating the bike stations and offers a comprehensive map to help you navigate with ease.

Photo: Malmö Turism  
Internet: [www.malmobybike.se/en](http://www.malmobybike.se/en)

## Malmö Live



Visit Malmö's new meeting place with music at its heart. Opened in August 2015, Malmö Live offers a concert hall, a conference centre, a hotel with a skybar, offices, housing, as well as many eateries. Malmö Live Concert Hall has world-class acoustics and is the home of the Malmö Symphony Orchestra.

Photo: Malmö Turism  
Address: Dag Hammarskjölds torg 4, Malmö  
Phone: +46 40 34 35 00  
Internet: [malmolive.se/en](http://malmolive.se/en)

## Teamtastic

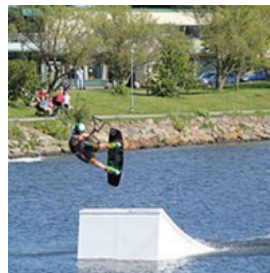


Teamwork is what counts when competing in Teamtastic's nine missions. Challenge your friends and maximise your team score in

different rooms with different challenges. This could be a music quiz, a game of beer pong, or an association game.

Photo: Pixel-Shot/shutterstock  
Address: Hamngatan 5, Malmö  
Phone: +46 10 303 34 50  
Internet: [teamtastic.se/malmo/aktivitet](http://teamtastic.se/malmo/aktivitet)  
Email: [info@teamtastic.se](mailto:info@teamtastic.se)

## Wakeboarding



If you enjoy extreme sports and thrilling experiences, why not give wakeboarding a try on your next visit to Malmö? Brace yourself for an unforgettable adventure as you carve through the waves on the cable system located in the picturesque Western Harbour, all while basking in the awe-inspiring presence of the magnificent Turning Torso.

Photo: Malmö Turism  
Address: Propellergatan 10, Malmö  
Internet: [www.malmowakepark.se/english](http://www.malmowakepark.se/english)  
Email: [boka@malmowakepark.se](mailto:boka@malmowakepark.se)

## Vattenhallen Science Center



Just a short 20-minute drive from Malmö, in the charming city of Lund, lies Vattenhallen, a fun science centre that promises an immersive and educational adventure for both children and adults.

Explore the fascinating exhibitions that showcase the wonders of scientific discovery, allowing you to delve into the intricate workings of the natural world. Be amazed by captivating shows that unveil the mysteries of the universe

in the state-of-the-art planetarium, where you can witness the dazzling spectacle of stars and galaxies.

Get hands-on with the thrilling challenge of shooting protons, testing your skills and knowledge in an exhilarating pursuit. Take on the DigiWall and engage in a friendly competition with a friend as you navigate a digital climbing wall that pushes your limits.

And unleash your creativity and engineering prowess by constructing a rocket using the innovative 4DFrame system.

Photo: Malmö Turism

Address: John Ericssons väg 1, Lund

Phone: +46 46 222 43 51

Internet: [www.vattenhallen.lu.se/english](http://www.vattenhallen.lu.se/english)

Email: [kontakt@vattenhallen.lu.se](mailto:kontakt@vattenhallen.lu.se)

More Info: Located at Lund University

## DINING



Malmö Turism

No other city in Sweden beats Malmö's epic diversity of international restaurants. Priding itself on over 600 restaurants and cafés, Malmö takes the cake on Sweden's densest concentration of dining establishments. Here is a sampling of some hot new addresses, and already-established names:

### Bloom in the Park



Bloom in the Park is a charming lakeside lodge serving modern European cuisine in a luxurious but relaxed setting. Nestled in the lush surroundings of Pildammsparken, one of the region's most stunning public parks, Bloom presents a refreshing surprise. Embracing their unique "No Menu" concept, they serve the finest dishes based on availability, the day, and the prevailing mood. This approach ensures that every meal is a delightful and delectable surprise, leaving you satisfied and eager for more.

Photo: Alana Harris/Unsplash

Address: Pildammsvägen 17, Malmö

Phone: +46 40 793 63

Internet: [bloominthepark.se](http://bloominthepark.se)

Email: [info@bloominthepark.se](mailto:info@bloominthepark.se)

### Namu



Namu, a trendy contemporary restaurant, is the culinary playground of Jennie Walldén, a former winner of Swedish MasterChef. Prepare to be dazzled by the colourful and delightful creations that merge vibrant Korean flavours with a modern Scandinavian twist. As Korea meets Sweden on the plate, a symphony of unique taste sensations unfolds, leaving you in awe of the harmonious fusion.

Photo: Portuguese Gravity/Unsplash

Address: Landbygatan 5, Malmö

Phone: +46 40 12 14 90

Internet: [namu.nu](http://namu.nu)

Email: [info@namu.nu](mailto:info@namu.nu)

### Vollmers



Vollmers, a Michelin-starred Scandinavian restaurant, delivers a culinary experience that stands in a league of its own. Step

into its minimalistic yet warm interior and prepare to embark on a meticulously curated journey through a myriad of flavours. Every dish showcases the finest seasonal and locally sourced ingredients, while the excellent wine pairings elevate the entire dining experience to new heights.

Photo: Malmö Turism  
Address: Tegelgårdsgatan 5, Malmö  
Opening hours: Wed-Sat 5pm-11:30pm  
Phone: +46 40 57 97 50  
Internet: vollmers.nu

### Rådhuskällaren



Steeped in fine old traditions, Rådhuskällaren, located in Malmö's historic City Hall, is a feast for many different senses. Not only

the sense of taste, with culinary traditions dating back to the city's days of glory in the 16th century, Rådhuskällaren also stimulates the aesthetic senses. The interplay of light and the clean, elegant Nordic design seamlessly blends with the enchanting ambience of the vaulted cellar rooms, creating a harmonious and visually pleasing atmosphere.

Photo: Malmö Turism  
Address: Kompanigatan 5, Malmö  
Phone: +46 40 790 20  
Internet: www.radhuskallaren.se

### Johan P



A hidden gem in the Malmö dining scene, Johan P specialises in an array of fish and seafood dishes, ranging from fish soup to seafood platters

to shrimp sandwiches. Complementing the culinary delights is an excellent selection of wines that beautifully enhance the flavours of the dishes. While the experience at Johan P may be a bit pricey, the superb quality and unforgettable dining experience make it worth every penny.

Photo: Malmö Turism  
Address: Hjulhammsgatan 5, Malmö  
Phone: +46 40 97 18 18  
Internet: [www.instagram.com/johanprestaurang](https://www.instagram.com/johanprestaurang)  
Email: [johanp@johanp.nu](mailto:johanp@johanp.nu)

### Lyran



Lyran is a small, down-to-earth restaurant serving Scandinavian-inspired small plates meticulously crafted each day using

the finest locally sourced, seasonal ingredients. Complementing these delectable offerings is a selection of natural wines, perfectly paired to enhance your dining experience.

Photo: Malmö Turism  
Address: Simrishammsgatan 36A, Malmö  
Opening hours: Tue-Thu 5pm-11pm, Fri & Sat 5pm-midnight, Sun & Mon closed  
Phone: +46 76 324 52 28  
Internet: [www.lyranmatbar.se](http://www.lyranmatbar.se)  
Email: [booking@lyranmatbar.se](mailto:booking@lyranmatbar.se)

### La Roche



Situated in the heart of Malmö, La Roche is a laid-back eatery, where Spanish-inspired tapas take centre stage.

Indulge in a culinary journey, as each bite transports you to the sun-drenched streets of Spain. To complement your gastronomic adventure, La Roche presents a carefully curated selection of imported wines, allowing you to discover new and delightful pairings. For an added touch of magic, bask in the inviting atmosphere of their terrace, where you can savour your delectable tapas under the open sky.

Photo: Dennis Schmidt/Unsplash  
Address: Larohegatan 5, Malmö  
Phone: +46 40 30 36 36  
Email: tapas@laroche.se

### Epicuré



Get ready for an unforgettable gastronomic adventure at Epicuré, an award-winning Italian restaurant with a focus

on rustic Italian food and wine. From artfully crafted pasta dishes to mouthwatering pizzas that transport you to the bustling streets of Naples, Epicuré's menu is a love letter to the rich flavours of Italy. But the delights don't end there! Indulge your sweet tooth with irresistible Italian desserts that will leave you longing for more. And of course, no Italian feast is complete without the perfect wine pairing. Epicuré takes pride in its extensive wine selection, ensuring that every sip complements and elevates your dining experience.

Photo: Malmö Turism

Address: Gustav Adolfs torg 45, Malmö  
Opening hours: Mon-Sat 11:30am-11pm, Sun noon-10pm  
Phone: +46 40 97 11 00  
Internet: epicure.nu  
Email: epicureregustavo@gmail.com

### Boulebar



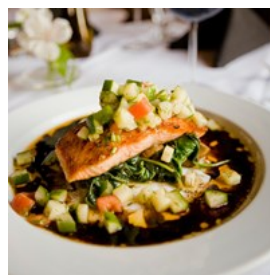
Originally French, the game of boules is a fun and very social way to spend time with friends. At Malmö's Boulebar, you can enjoy a game on one

of their indoor or outdoor boules alleys, accompanied by great food, wine, and why not a glass of pastis?

Photo: patrick gantz/Pxhere

Address: Drottningtorget 8, Malmö  
Phone: +46 10 162 92 00  
Internet:  
[www.boulebar.se/bar-restaurang/drottningtorget-malmo/](http://www.boulebar.se/bar-restaurang/drottningtorget-malmo/)

### Brasserie Sture 1912



Brasserie Sture 1912 is a long-established gourmet destination, boasting a rich history spanning over a century. Within its walls, diners embark on a

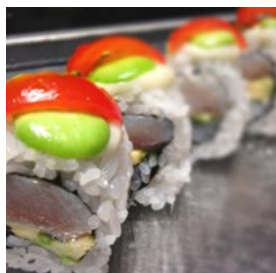
culinary journey that harmoniously blends French classics with beloved Swedish favourites. Picture succulent baked veal, tender wild boar roast beef, and delicate poached salmon adorned with luscious Hollandaise sauce. These exquisite offerings are just a glimpse of the culinary delights that grace the ever-changing menu, ensuring every visit to Sture is a captivating affair.

One cannot mention Brasserie Sture 1912 without highlighting their beloved house

sausage, aptly named "Sture the Great." This signature creation has become a sensation among patrons, winning hearts with its exceptional taste and undeniable appeal.

Photo: Casey Lee/Unsplash  
Address: Adalgatan 13, Malmö  
Phone: +46 40 12 12 53  
Internet: [www.sture1912.com](http://www.sture1912.com)  
Email: [info@sture1912.com](mailto:info@sture1912.com)

### Saiko



Saiko embraces the essence of Izakaya culture, where friends and family gather around the table to indulge in the delightful tradition of communal dining. Dive into a menu that showcases an array of tantalizing sushi, plus small and medium-sized dishes, meticulously prepared to capture the essence of Japanese cuisine.

Photo: Malmö Turism  
Address: Sankt Knuts väg 7, Malmö  
Phone: +46 40 616 05 75  
Internet: [saiko.se](http://saiko.se)

### Välfärden



Open for lunch only on weekdays, Välfärden is a hidden gem in Malmö, serving Scandinavian dishes with international influences as well as vegetarian options. Its lunch menu features two dishes of the day, one of which is vegetarian. Complementing these delights are refreshing salads, a soup, and sandwiches. As a special treat, the lunch experience at Välfärden includes access to a salad buffet, accompanied by their signature homemade bread. And to complete

your meal, enjoy a comforting cup of coffee or tea.

Photo: Victoria Morgan/Unsplash  
Address: Anckargripsgatan 3, Malmö  
Opening hours: Mon-Fri 9am-3pm  
Phone: +46 76 008 02 30  
Internet: [valfarden.nu](http://valfarden.nu)

### Mando

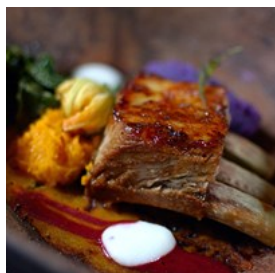


Mando is the ultimate destination for steak lovers right in the heart of Malmö. At Mando, they take pride in serving the finest cuts of beef, meticulously dry-aged to perfection. If you prefer a melt-in-your-mouth experience, their filet mignon is an exquisite choice that never fails to impress. And for those craving hearty options, the juicy ribs and burgers offer a delightful balance of smokiness and meaty goodness.

Since Mando is also a bar, they also offer a wide range of local and international brews, a curated selection of wines, and innovative cocktails that their skilled mixologists are ready to whip up for you.

Photo: Loija Nguyen/Unsplash  
Address: Skomakaregatan 4, Malmö  
Opening hours: Mon-Thu 2pm-8:30pm, Fri 11:30am-9:30pm, Sat noon-9:30pm, Sun 1pm-8pm  
Phone: +46 40 780 00  
Internet: [mandosteakhouse.com](http://mandosteakhouse.com)  
Email: [info@mandosteakhouse.com](mailto:info@mandosteakhouse.com)

### Årstiderna i Kockska Huset



Årstiderna is a Scandinavian restaurant that offers a fine dining experience in the enchanting ambience of a 16th-century cellar.

Nestled in this intimate setting, Årstiderna takes pride in its commitment to sourcing raw materials from local producers and suppliers whenever possible. Their goal is unwavering — to consistently serve exceptional food that exceeds expectations. Prepare to indulge in a culinary journey where each dish tells a story of quality and craftsmanship.

Photo: Kiyoshi/Unsplash

Address: Frans Suellsgatan 3, Malmö

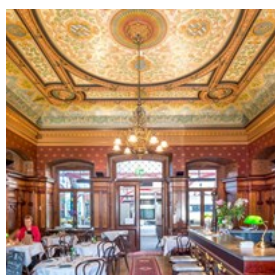
Opening hours: Mon-Thu 5pm-10pm, Fri 5pm-11pm, Sat 4pm-11pm

Phone: +46 40 23 09 10

Internet: [arstiderna.pieplowsrestauranger.se](http://arstiderna.pieplowsrestauranger.se)

Email: [info@arstiderna.se](mailto:info@arstiderna.se)

### Bistro Royal



In the old royal waiting room at Malmö Central Station, Bistro Royal invites you on a culinary journey across Europe.

Indulge in the flavours of Italian, Spanish, and Swedish home cooking in a beautiful and historic setting.

Photo: Malmö Turism

Address: Centralplan 1, Malmö

Phone: +46 40 685 56 56

Internet: [bistorroyal.se](http://bistorroyal.se)

Email: [info@bistorroyal.se](mailto:info@bistorroyal.se)

### Sajvva



Sajvva is a small family-run restaurant that specialises in vegan Asian fusion cuisine. Their menu boasts a delightful array of flavourful, innovative, and completely plant-based dishes.

Not only does Sajvva's kitchen exude creativity, but the same spirit of imagination, vibrancy, and attention to detail permeates their cocktail bar. Guests can indulge in experimental drinks crafted from scratch, incorporating fresh ingredients for a truly unique experience, as well as a selection of bottled beers sourced from small microbreweries, non-alcoholic beverages, and natural wines.

Photo: Farhad Ibrahimzade/Unsplash

Address: Östra Förstadsgatan 29, Malmö

Opening hours: Tue-Sat 5pm-10pm

Phone: +46 40 29 11 21

Internet: [www.sajvva.se](http://www.sajvva.se)

### NamDo



At the restaurant known as Nam đô, which is Vietnamese for “big city in the south,” the Tiêu family serve traditional Vietnamese dishes in a relaxed setting. You can choose from options including the national dish phở, fragrant dishes marinated in lemongrass, and their very own Asian burger. Vietnamese brunch is served every Saturday and Sunday.

Photo: Markus Winkler/Unsplash

Address: Engelbrektsgratan 11, Malmö

Phone: +46 40 23 30 12

Internet: [www.instagram.com/namdorestaurant](http://www.instagram.com/namdorestaurant)

Email: [info@namdo.se](mailto:info@namdo.se)

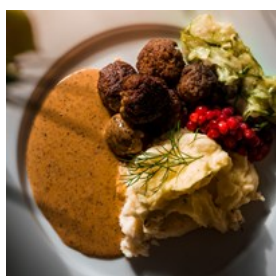
## Zócalo



Zócalo takes its inspiration from the taquerias of San Francisco's vibrant Mission District, known for their Mexican culinary delights. They proudly present their unique concept of "Fresh Happy Mex", offering authentic Mexican cuisine crafted meticulously from scratch, using only the finest hand-picked ingredients.

Photo: Jeswin Thomas/Unsplash  
Address: Södergatan 3, Malmö  
Phone: +46 8 409 115 04  
Internet: [www.zocalo.se](http://www.zocalo.se)  
Email: [zsolt@zocalo.se](mailto:zsolt@zocalo.se)

## Siesta



Siesta is a quaint and charming little restaurant nestled in a quiet corner, serving an amazing selection of Swedish traditional dishes. Among the culinary treasures they offer, the world-famous Swedish meatballs stand out as an absolute must-try. The fact that Siesta is highly popular with the locals speaks volumes about its authenticity and quality. When locals flock to a restaurant, it's a clear indication of delicious food and a memorable dining experience.

Photo: Emanuel Ekström/Unsplash  
Address: Hjortackegatan 1, Malmö  
Phone: +46 40 611 10 27  
Internet: [www.siesta.nu](http://www.siesta.nu)  
Email: [info@siesta.nu](mailto:info@siesta.nu)

## CAFÉS



*Malmö Turism*

Sit down at one of the city's many cafés and soak up all the new impressions. Whether you prefer the familiarity of well-known chains or the intimate ambience of quaint, cosy establishments, Malmö has it all.

### Kafé Kungsgatan



Nestled along the bustling Kungsgatan, this café is a popular spot for locals and visitors alike. The rustic yet contemporary interior creates a welcoming ambience, making it the perfect place to enjoy a leisurely breakfast, a quick lunch, or a relaxing afternoon coffee. At Kafé Kungsgatan, the menu is filled with a selection of coffees, teas, refreshing beverages, and a tempting array of homemade treats — from freshly baked pastries to artisan sandwiches, every dish is crafted with care and attention to detail.

Photo: Nathan Dumlao/Unsplash  
Address: Kungsgatan 2, Malmö  
Opening hours: Mon-Fri 8am-6pm, Sat 9am-5pm, Sun 10am-4pm  
Phone: +46 40 12 12 14  
Internet: [www.instagram.com/kafekungsgatan](http://www.instagram.com/kafekungsgatan)  
Email: [info@kungsg.se](mailto:info@kungsg.se)

## Hollandia



Indulge your sweet tooth with a visit to Hollandia, a Malmö institution renowned for its heavenly assortment of pastries and cakes. From delicate éclairs to decadent chocolate tortes to the famous Swedish delicacy known as Princesstårta – a luscious combination of sponge cake, raspberry jam, custard, and a fluffy layer of green marzipan that is sure to captivate your taste buds.

Photo: Swapnil Dwivedi/Unsplash

Address: Södra Förstadsgatan 8, Malmö

Opening hours: Mon-Fri 8am-7pm, Sat & Sun 9am-7pm

Phone: +46 40 12 48 86

Internet: [www.hollandia.se](http://www.hollandia.se)

## Pâtisserie David



Indulge in heavenly cakes, delicate pastries, and wonderful marmalades at Pâtisserie David, a pastry shop where everything is homemade, baked from scratch, and crafted with the finest ingredients. Beyond sweets, they also offer lighter lunch options. From comforting soups and hearty crêpes to the satisfying crunch of a croque-monsieur and the savoury allure of quiches and baguettes.

Photo: Kelvin Han/Unsplash

Address: Östergatan 7b, Malmö

Opening hours: Mon-Fri 8am-5pm, Sat 10am-4pm

Phone: +46 40 630 80 80

Internet: [www.patissieriedavid.se](http://www.patissieriedavid.se)

Email: [david@patissieriedavid.se](mailto:david@patissieriedavid.se)

## Café Sorl



On the corner of Triangeln lies Café Sorl, a cosy café that offers the perfect setting to relax and indulge in the simple pleasures of life. With a commitment to using organic ingredients sourced according to the season, Café Sorl ensures that every dish bursts with freshness and flavour. From aromatic coffee to delectable sandwiches and mouthwatering cakes, their menu satisfies a range of cravings.

Its interior design is a sight to behold, giving the place a unique touch. From the carefully chosen furniture to the captivating bookshelf that invites you to explore its literary treasures, every element adds to the café's distinctive charm.

Photo: Tyler Nix/Unsplash

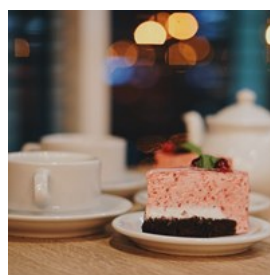
Address: Friisgatan 5A, Malmö

Opening hours: Wed-Fri 9am-5pm, Sat & Sun 10am-5pm

Phone: +46 70 310 18 16

Internet: [cafesorl.se](http://cafesorl.se)

## Lilla Kafferosteriet



Step into the captivating world of Lilla Kafferosteriet, where each room holds its own charm, beckoning you to choose your favourite cosy spot. Located in a picturesque location, this historic house boasts tasteful decor and a rich sense of character. Indulge in the perfect fika experience with exceptional coffee, delectable sandwiches, scones, cakes, and heavenly cinnamon rolls.

Photo: Oleg Ivanov/Unsplash

Address: Baltzarsgatan 24, Malmö

Opening hours: Mon-Fri 8am-6pm, Sat & Sun 10am-6pm

Phone: +46 40 48 20 00  
Internet: [www.lillakafferosteriet.se](http://www.lillakafferosteriet.se)  
Email: [info@lillakafferosteriet.se](mailto:info@lillakafferosteriet.se)

### Slottsträdgårdens Kafé

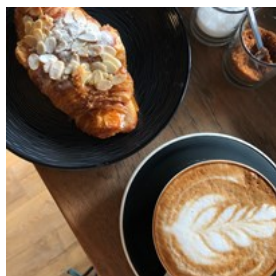


Situated in the picturesque Slottsträdgården, this café is a charming oasis serving classic home cooking, salads, buttered bread, and delightful pastries. It offers a cosy and inviting atmosphere, with various seating options including a beautifully decorated greenhouse or the fantastic garden area.

The outdoor dining area overlooks Malmö's oldest park, Kungsparken, and the meandering canal, providing a peaceful escape from the city's hustle and bustle. The café prides itself on using organic, locally sourced, and climate-smart ingredients, following the seasons and making the most of what the garden has to offer.

Photo: K8/Unsplash  
Address: Malmöhusvägen 8, Malmö  
Opening hours: Mon-Thu 11am-5pm, Fri 11am-6pm, Sat & Sun 10am-6pm  
Phone: +46 40 30 40 34  
Internet: [slottstradgardenskafe.se](http://slottstradgardenskafe.se)  
Email: [info@slottstradgardenskafe.se](mailto:info@slottstradgardenskafe.se)

### Kaffebaren på Möllan

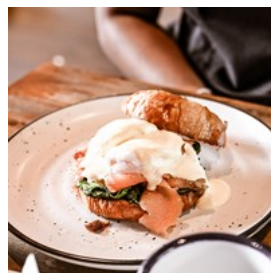


Kaffebaren på Möllan is a beloved coffee shop located at Möllevångstorget, where men with moustaches, media professionals, and students come together to engage in lively conversations with both fellow patrons and the friendly staff. Indulge in the delight of exceptional coffee that is expertly brewed and

accompanied by delectable croissants and sandwiches.

Photo: Anastasiia Balandina/Unsplash  
Address: Ystadsgatan 9, Malmö  
Opening hours: Mon-Fri 8am-6pm, Sat 9am-6pm, Sun 10am-6pm  
Internet: [www.instagram.com/kaffebarenmollan](http://www.instagram.com/kaffebarenmollan)

### Atrium



Located in the vibrant heart of Malmö, Atrium is a bright and inviting café. From breakfast to lunch, their menu offers a delightful selection of light brunch dishes perfect for early mornings, as well as satisfying options for lunch or a late afternoon bite. Indulge in their tantalizing and seasonal menu, featuring a delectable array of home-baked goods and expertly crafted sandwiches. And fear not, as Atrium caters to all dietary preferences with their offerings of both vegetarian and vegan options.

Photo: Jojo Yuen (sharemyfood)/Unsplash  
Address: Skvadronsgatan 13, Malmö  
Opening hours: Mon-Fri 8am-5pm, Sat & Sun 9am-5pm  
Phone: +46 40 30 66 00  
Internet: [www.atriumcafe.se](http://www.atriumcafe.se)  
Email: [kontakt@atriumcafe.se](mailto:kontakt@atriumcafe.se)

### Pronto

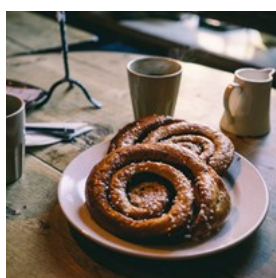


Pronto is a café located on Lilla Torg serving coffee, smoothies, and Italian and American-inspired snacks. However, what truly sets Pronto apart is its famous cheesecakes. Indulge in a heavenly slice of creamy bliss as you explore their generous selection of cheesecake flavours. From classic New York

style to tantalizing twists like pecan cola and raspberry white chocolate, there's a cheesecake to suit every taste.

Photo: LUIZ CARLOS SANTI/Unsplash  
Address: Lilla torg 2, Malmö  
Opening hours: Sun-Thu 11am-10pm, Fri & Sat 11am-11pm  
Phone: +46 76 197 77 47  
Internet: [www.cafepronto.se/index](http://www.cafepronto.se/index)  
Email: [info@cafepronto.se](mailto:info@cafepronto.se)

### Cafe No.6



Cafe No.6 is a charming little café close to Folkets Park offering an excellent assortment of coffees, alongside fresh sandwiches, and a variety

of lunch choices. During the summer months, you can relish your coffee amidst the serenity of their garden, while in winter, you can secure a cosy window seat to enjoy your beverage.

Photo: Free CC0 Image/Rawpixel  
Address: Mäster Henriksgatan 6, Malmö  
Opening hours: Mon-Fri 9am-5pm, Sat & Sun 10am-5pm  
Phone: +46 73 553 32 95  
Internet: [www.instagram.com/cafenumber6](http://www.instagram.com/cafenumber6)

## BARS & NIGHTLIFE



Malmö Turism

Malmö residents do know how to have fun! And often until four or five in the morning. However, if Malmö's nightlife still doesn't do it for you,

then you can always hop on a quick train to Copenhagen and continue the party.

### The Bishops Arms



At The Bishops Arms, you'll find a well-thought-out and wide range of beverages with a focus on beer and whiskey. There is

something for everyone here, whether you're a connoisseur and are looking for something exclusive or simply want to enjoy a beloved classic. The English-style premises even serves a popular pub menu. The staff has extensive knowledge and will guide you with pleasure.

Photo: Malmö Turism  
Address: Gustav Adolfs torg 49C, Malmö  
Opening hours: Sun-Wed 3pm-midnight, Thu 3pm-1am, Fri & Sat 1pm-1am  
Phone: +46 40 664 48 78  
Internet:  
[www.bishopsarms.com/vara-pubar/malmo/gustav-adolfs-torg](http://www.bishopsarms.com/vara-pubar/malmo/gustav-adolfs-torg)  
Email: [plazamalmo@bishopsarms.com](mailto:plazamalmo@bishopsarms.com)  
More Info: 2nd location: Norra Vallgatan 62

### Malmö Brewing Co & Taproom



Embark on a beer-tasting adventure with a visit to the Malmö Brewing Co & Taproom, the only microbrewery in the city. With over 42 different

beers on tap, the Malmö Brewing Co & Taproom offers an eclectic selection that caters to all palates. As you explore the diverse beer offerings, you'll find yourself tempted to pair your drinks with some delicious food. The Malmö Brewing Co & Taproom caters to your appetite with mouthwatering barbecue dishes.

Photo: Proriat Hospitality/Unsplash

Address: Bergsgatan 33, Malmö

Opening hours: Sun-Thu 4pm-midnight, Fri 4pm-3am, Sat noon-3am

Phone: +46 73 392 19 66

Internet: malmobrewing.com

Email: booking@malmobrewing.com

### Pickwick Pub



Located in the heart of Malmö's vibrant entertainment district, Malmborgen, the Pickwick Pub stands proudly as one of the most beloved establishments in the city. With its unique and delightful English spirit, it has become a cherished destination for locals and visitors alike.

The bar boasts a rich variety of beers on tap and in bottles, offering something to satisfy every beer lover's palate. And when hunger strikes, Pickwick's menu of pub-style dishes and snacks is sure to satiate any craving. If you happen to visit on a Wednesday evening, you're in for a treat—the Pickwick Pub hosts its renowned Quiz night. Gather your friends, test your knowledge, and compete for great prizes.

Photo: Louis Hansel/Unsplash

Address: Stadt Hamburgsgatan 2, Malmö

Opening hours: Mon-Thu 4pm-midnight, Fri 3pm-2am, Sat 1pm-2am, Sun noon-11pm

Phone: +46 40 23 32 66

Internet: pickwickpub.nu

Email: info@pickwickpub.nu

### Far i Hatten



Escape to Far i Hatten, a charming and cosy cottage nestled in the heart of Malmö's Folkets Park. This hidden gem welcomes you with open arms, offering a haven of warmth and comfort throughout the year.

Treat yourself to the mouthwatering wood-fired oven-baked pizzas that grace their menu. Prepared with passion and creativity, their pizzas boast unique toppings combinations, like the intriguing blend of cabbage and apple, guaranteeing a flavour adventure with every bite. But Far i Hatten is more than just a culinary delight. It is a cultural hub that pulsates with live events, DJs, and other artistic performances.

Photo: Pinar Kucuk/Unsplash

Address: Folkets Park, Malmö

Opening hours: Mon & Tue 4pm-11pm, Wed & Thu 4pm-midnight, Fri 4pm-2am, Sat 11am-2am, Sun 11am-11pm

Phone: +46 40 615 36 51

Internet: www.farihatten.se

Email: info@farihatten.se

### Care/Of Cocktailbar



Care/Of Cocktailbar is an award-winning gem in the vibrant nightlife of Malmö. As you step into the bar, you are enveloped in an atmosphere that is both dark and elegant. The dimly lit space creates a sense of intimacy, while the carefully curated decor exudes a sophisticated charm.

One of the highlights of Care/Of Cocktailbar is its team of professional mixologists who are

masters of their craft, allowing them to create cocktails that are truly a work of art. Whether you prefer a freestyle creation tailored to your unique taste or a meticulously crafted classic cocktail, the skilled mixologists are at your service, ready to craft a drink that will delight your senses.

Photo: Malmö Turism

Address: Fiskehammsgatan 11C, Malmö

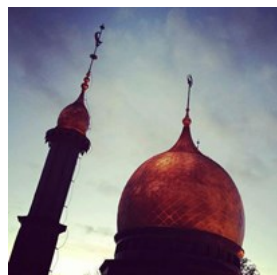
Opening hours: Mon closed, Tue–Thu 4pm–midnight, Fri & Sat 4pm–1am, Sun 4pm–10pm

Phone: +46 40 13 22 23

Internet: careof.bar

Email: info@careof.bar

### Moriska Paviljongen



Also known as "Moriskan" — an early 20th-century Moorish pavilion in Folkets Park where everybody is welcome.

Within its walls, you'll witness a remarkable blend of cultural diversity and artistic expression. Imagine a vibrant evening where the air is filled with the exhilarating beats of an Iraqi superstar performing in one hall, while in another, a lively gay club invites revellers to dance and celebrate. Meanwhile, in the garden, passionate conversations about democracy thrive, and thought-provoking ideas are exchanged. In the bistro, the rhythmic pulse of hip-hop sets the backdrop as individuals unwind and socialise.

Whether you're seeking a lively concert, a vibrant club scene, engaging discussions, or simply a space to enjoy good music and great company, Moriskan stands as a testament to unity and acceptance.

Photo: Malmö Turism

Address: Norra Parkgatan 2, Malmö

Phone: +46 40 685 40 30

Internet: moriskapaviljongen.se

Email: info@moriskapaviljongen.se

### Casino Cosmopol Malmö



and dance evenings.

Casino Cosmopol is an international casino featuring slot machines and gaming tables, as well as a restaurant, a sports bar, live shows,

Photo: Malmö Turism

Address: Slottsgatan 33, Malmö

Opening hours: Sun–Thu 4pm–2am, Fri & Sat 4pm–4am

Phone: +46 20 21 92 19

Internet: casinocosmopol.se

### Fagans



Fagans is a lively Irish pub and restaurant that brings the warm and friendly spirit of Ireland to Malmö. The weekend comes alive at Fagans with live music filling the air every Thursday, Friday, and Saturday. A pub quiz will put your knowledge to the test every Thursday, and for the sports enthusiasts, they have you covered with big screens showing live sports events.

Photo: Dovi/Unsplash

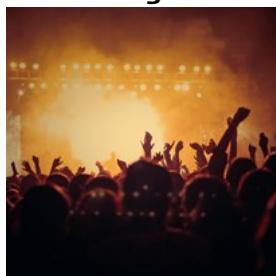
Address: Per Weijersgatan 4, Malmö

Opening hours: Mon & Tue 4pm–midnight, Wed & Thu 4pm–1am, Fri & Sat 2pm–2am, Sun 1pm–11pm

Phone: +46 40 97 09 90

Email: contact@fagans.se

### Kulturbolaget



Kulturbolaget, a sought-after venue, combines the raw charm of industrial design with the pulsating energy of live music and electrifying DJ nights. Renowned for hosting top-notch rock and pop bands, this establishment is a favorite among music enthusiasts.

Photo: Vishnu R Nair/Unsplash  
Address: Bergsgatan 18, Malmö  
Phone: +46 40 30 20 11  
Internet: kulturbolaget.se  
Email: info@kulturbolaget.se

### Centiliter & Gram



Centiliter & Gram is a trendy bar, centrally located in the town square featuring a vibrant atmosphere and live DJs spinning the latest tunes. Indulge in the art of mixology as you peruse their extensive menu of drinks, ranging from classic wines to creative cocktails, plus a delectable menu of tapas to complement your libations.

Photo: Malmö Turism  
Address: Stortorget 17, Malmö  
Opening hours: Daily 9pm-3am  
Internet: etagegruppen.se  
Email: info@centiliterochgram.se

### Belle

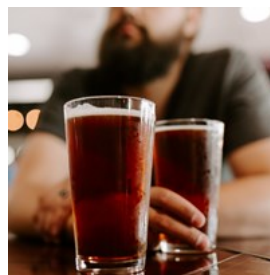


Belle is a charming French cocktail bar known for its intimate ambience and handcrafted specialty cocktails. The

establishment boasts a minimalist yet stylish atmosphere, featuring walls adorned with beautiful blue tiles, inviting wooden bar stools, and warm, low-key lighting that sets the mood for an unforgettable evening.

Photo: Paige Ledford/Unsplash  
Address: Södra Skolgatan 43, Malmö  
Opening hours: Daily 4pm-1am  
Phone: +46 73 155 76 36  
Internet: www.instagram.com/bellecocktails

### BrewDog Malmö



BrewDog is the ultimate destination for craft beer enthusiasts in Malmö. The bar specialises in serving a wide range of exceptional craft beers from the renowned Scottish brewery, BrewDog, along with regular guest beers. Challenge your friends to a game of shuffleboard while you sip on your favourite brew or indulge in one of their juicy burgers.

Photo: Julianna Arjes/Unsplash  
Address: Baltzarsgatan 25, Malmö  
Opening hours: Mon 2pm-11pm, Tue-Thu 2pm-midnight, Fri & Sat noon-1am, Sun 2pm-11pm  
Phone: +46 40 17 20 00  
Internet: www.brewdog.com/uk/malmo  
Email: malmo@brewdog.com

### Izakaya Koi



Nestled in the heart of Lilla Torg, Izakaya Koi is a Japanese izakaya-style restaurant that has become a beloved gathering place for both sushi lovers and nightlife enthusiasts alike. This is where the Malmö-inhabitants go to see and be seen.

Izakaya Koi spans multiple floors, with the ground floor housing the main restaurant with inviting outdoor seating and a spacious outdoor bar. The remaining floors of the establishment feature lively dance floors and bars ensuring an unforgettable experience for all patrons.

Photo: Malmö Turism

Address: Lilla Torg 5, Malmö

Opening hours: Tue-Thu 5pm-10pm, Fri & Sat 5pm-3am

Phone: +46 40 757 00

Internet: koi.se

Email: kontakt@koi.se

### Babel



Babel is an electrifying live music venue that offers a vibrant lineup of both local and international bands, DJ sets, and stand-up

comedy shows.

Photo: Malmö Turism

Address: Spångatan 38, Malmö

Phone: +46 40 57 98 97

Internet: babelmalmo.se

Email: info@babelmalmo.se

## SHOPPING

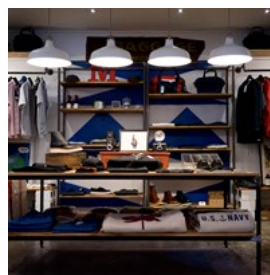


Oskar Falck / Malmö Turism

Malmö boasts a large selection of designer boutiques and a vibrant fashion scene catering to young and trendy tastes. The central hub for commercial shopping is a pedestrian mall extending from the Great Square (Stortorget) along Södergatan, Skomakaregatan, and Baltzarsgatan, passing through Gustav Adolf Square, Södertull, and continuing down Södra Förstadsgatan to Triangeln and Möllevången.

Explore the charming streets of picturesque Gamla Väster, the trendy vibes of David Hall, or the bustling scenes of Stora Nygatan and Friisgatan. Take a leisurely break with a view of the sea at West Harbour or immerse yourself in the lively atmosphere of Little Square. The best part is that most attractions and destinations are conveniently located within walking distance, allowing you to explore and enjoy the city on foot.

### Triangeln



Situated in the heart of Malmö, Triangeln is a bustling shopping mall that offers a diverse and engaging retail experience. With its

central location and modern architecture, Triangeln draws in visitors from near and far. It

features a vast array of shops, ranging from popular fashion brands to specialty stores, electronics, and much more. In addition to a variety of dining options and convenient amenities like a grocery store and a pharmacy, ensuring that all your needs are met in one place.

Photo: Clark Street Mercantile/Unsplash  
Address: Södra Förstadsgatan 41, Malmö  
Opening hours: Mon-Fri 10am-8pm, Sat & Sun 10am-6pm  
Phone: +46 40 23 02 06  
Internet: [www.triangeln.com/3startsida-english](http://www.triangeln.com/3startsida-english)  
Email: [info@triangeln.com](mailto:info@triangeln.com)

### Emporia

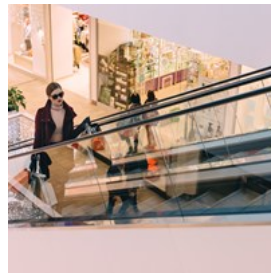


Emporia is one of the largest shopping centres in Scandinavia and has become an iconic landmark in the region since its opening in 2012.

Its architecture is unique and eye-catching, featuring a distinctive design inspired by the shape of a pebble. The centre spans several floors and offers a vast retail space housing over 200 shops, boutiques, and department stores — from popular international brands to local Swedish designers. Plus, numerous restaurants, cafés, and food courts. With its convenient location near the Öresund Bridge, Emporia is easily accessible from both Malmö and Copenhagen, attracting visitors from both sides of the border.

Photo: Malmö Turism  
Address: Hyllie Boulevard 19, Malmö  
Opening hours: Daily 10am-8pm  
Phone: +46 40 36 36 10  
Internet: [emporia.steenstrom.se](http://emporia.steenstrom.se)  
Email: [info.emporia@steenstrom.com](mailto:info.emporia@steenstrom.com)

### Hansa



In the heart of Malmö, just a stone's throw from Gustav Adolf Square, lies the captivating Hansa — a shopping mall that exudes sophistication and

style. This retail paradise beckons with its enticing blend of fashion-forward stores, a supermarket, and a delightful array of both casual and contemporary eateries.

Photo: freestocks/Unsplash  
Address: Stora Nygatan 50-56, Malmö  
Opening hours: Mon-Fri 10am-7pm, Sat 10am-6pm, Sun 11am-5pm  
Phone: +46 40 770 00  
Internet: [hansamalmo.se](http://hansamalmo.se)  
Email: [info@hansamalmo.se](mailto:info@hansamalmo.se)

### Mitt Möllan



Mitt Möllan is a bustling hub and gathering place for the city's creatives. It boasts a food court, alternative shops, inventive offices, local design and vintage treasures, plus exciting pop up-markets.

Photo: Christelle BOURGEOIS/Unsplash  
Address: Claesgatan 8, Malmö  
Opening hours: Mon-Thu 11am-8pm, Fri 11am-9pm, Sat 11am-5pm  
Internet: [www.mittmollan.se](http://www.mittmollan.se)  
Email: [info@mittmollan.se](mailto:info@mittmollan.se)

### Shopping Eco in Malmö



Malmö has a lot of good eco shops, here are a couple of suggestions: AB Småland Address: Södra Förstadsgatan 25/27  
Opening hours: Mon-Fri 10am-6pm, Sat 10am-5pm, Sun 11-4pm

AB Småland is an eco-friendly shop filled with sustainable inspiration, interior design, plants, vintage furniture, and fashion for women, men, and children. At AB Småland, you'll discover a remarkable assortment of items, ranging from locally sourced goods to an array of reused and recycled products.

#### Uma Bazaar

Address: Lilla Torg 9

Opening hours: Tue-Fri noon-6pm, Sat noon-4pm

Experience the essence of mindful shopping at Uma Bazaar, a charming and conscious shop, where fashion meets ethical values. Since its establishment in 2005, Uma Bazaar has been committed to providing an alternative to the big fast fashion chains. Discover a world of eco-friendly choices, from soft basics made from wood fibre to stylish dresses crafted from eco-cotton sourced from fair trade cooperatives.

Photo: micheile henderson/Unsplash

Internet: [www.absmaland.com/en](http://www.absmaland.com/en)

### Young & Trendy Davidshall



Over the last few years, many new restaurants, cafés, and shops have popped up in the area around Davidshallstorg. While catering primarily to a youthful and fashion-forward crowd, the stores in Davidshall offer a wide range of options for shoppers. From boutique shops featuring custom designs to vintage stores brimming with nostalgic treasures, there is something for everyone. If you're on the lookout for your favourite designer, be sure to check out Melo, Popolino, Gry, or Liebling.

Photo: Priscilla Du Preez/Unsplash

Address: Davidshallstorg, Malmö

### Local Crafts & Design in Gamla Väster

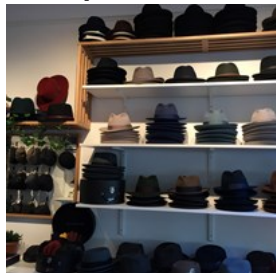


To the west of Lilla Torg lies the picturesque neighbourhood of Gamla Väster with its beautifully restored old houses, delightful boutique shops, galleries, and cosy cafés. Strolling through this area immerses you in a serene ambience while keeping you close to the heart of the city. Adjacent to Lilla Torg and Hedman Courtyard, you'll discover a plethora of local artisans and the Form/Design Center, showcasing exhibitions and a shop brimming with the finest examples of Scandinavian design.

Photo: Sven Rosborn/cc by-sa 3.0/Wikimedia(image cropped)

Address: Gamla Väster, Malmö

### Hatthyllan



Hatthyllan is a haven for hat aficionados and fashion-conscious individuals seeking to add a touch of style and sophistication to their wardrobes. The shop stocks a carefully curated collection of hats, ranging from classic designs to contemporary styles.

Whether you're looking for a stylish fedora, a chic cloche, or a trendy beret, Hatthyllan offers an extensive selection of hats to suit every occasion. From casual outings to formal events, there's a hat waiting to complete your ensemble and make a memorable statement.

Photo: Malmö Turism

Address: Davidshallstorg 1, Malmö

Opening hours: Tue-Fri 11am-6pm, Sat 11am-4pm, Sun & Mon closed

Phone: +46 40 655 72 22

Internet: hatthyllan.se

Email: info@hatthyllan.se

### SweOutlet



Less than 30 min by car from Malmö in Löddeköpinge, SweOutlet is a premier shopping destination for those seeking great deals on a wide range of products. This bustling outlet offers an array of popular brands at discounted prices. Whether you're looking for clothing, footwear, accessories, home goods, or electronics, SweOutlet has something for everyone.

Photo: Alexander Kovacs/Unsplash

Address: Varuvägen 1, Löddeköpinge

Opening hours: Mon-Fri 10am-7pm, Sat 10am-5pm, Sun

11am-5pm

Phone: +46 46 71 21 00

Internet: sweoutlet.com

## ACCOMMODATIONS



Malmö Turism

Malmö has a large selection of accommodation in all price ranges. There is everything from centrally located hotels to camping sites on the beach in Sibbarp.

## TOURIST INFORMATION



Malmö Turism

### Passport/Visa



Sweden can be visited visa-free for up to 90 days by citizens of Australia, New Zealand, Japan, South Korea, Taiwan, Malaysia, Israel, UAE and most countries in America. If you are unsure

whether or not you need to apply for a visa, we recommend contacting the embassy or consulate in your country. International (non-Schengen) travellers need a passport that is valid for at least 3 months after the end of their intended trip in order to enter the Schengen zone. Citizens of Schengen countries can travel without a passport but must have a valid ID with them during their stay.

Photo: mana5280/Unsplash

### Airports



Malmö can be reached by air via Malmö Airport (MMX) and Copenhagen Airport (CPH). Malmö Airport is about 30 km east of the city and you can go by car, taxi, or shuttle bus. The trip takes about 40 minutes. Copenhagen Airport is the region's international airport and is reached most easily by the Öresund trains that stop at the airport. The journey between Copenhagen Airport and Malmö takes about 25 minutes and trains depart every 20 minutes.

Photo: CHUTTERSNAAP/Unsplash  
Address: Malmö Airport, Malmö  
Internet: [www.swedavia.com/malmo](http://www.swedavia.com/malmo)

### Public Transport



Public transport in Malmö and Skåne are extensive. Information on both city buses, regional buses, and the Öresund train, you will find at

Skånetrafiken.

Remember that you cannot pay cash on the green city buses in Malmö. With Skånetrafiken's

app, you can use the function "Reseplaneraren" to buy a single ticket. You can also buy special-priced 1 and 3-day cards for Malmö at the tourist office, and cards for Malmö and Skåne at Skånetrafiken's Customer Service Centre at the Central Station, Triangeln Station, and Hyllie Station.

Photo: Ant Rozetsky/Unsplash  
Internet: [www.skånetrafiken.se](http://www.skånetrafiken.se)

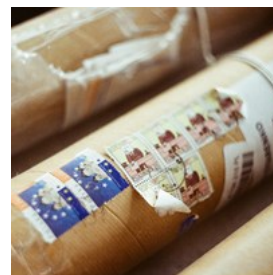
### Taxi



Taxi Center Malmö Tel:  
+46 73 669 92 28 Taxi97  
Transport Kompaniet Tel:  
+46 40 97 97 97

Photo: Waldemar/Unsplash

### Post



You can buy stamps at the Pressbyrån, tobacco shops, and grocery stores.

Photo: Sonia Kardash/Unsplash

### Pharmacy



Some of the popular pharmacy chains in Malmö, and in Sweden generally, are the state-owned Apoteket, Kronans Apotek, the largest privately-owned chain Apotek Hjärtat, and LloydsApotek.

Photo: Mariano Baraldi/Unsplash  
Address: Apoteket Gripen (Apoteket AB), Bergsgatan 48,

Malmö

Opening hours: Daily 8am-11pm

Phone: +46 77 145 04 50

### Telephone



Country Code: +46 Area  
Code: 040

Photo: Wesley Hilario/Unsplash

### Electricity



220 Volt AC/50 Hz

Photo: Mike Winkler/Unsplash

### Drinking Water



Tap water in Sweden is of high quality and is perfectly safe to drink.

Photo: Andres Siimon/Unsplash

### Marinas of Malmö



Limhamn

Malmö has three marinas that welcome guest boats: Dockan Marina: Dockplatsen 1, Malmö  
Limhamns Småbåtshamn: Vågbrytarvägen,

Lagunen Småbåtshamn: Vaktgatan 9, Limhamn

All the marinas in Malmö are conveniently located near the city centre. Dockan Marina is just a ten-minute walk away from the Central Station. If you visit Limhamns Småbåtshamn, you can borrow bikes for free, and Lagunen has a bus stop for city buses within a ten-minute walk.

Photo: Malmö Turism

Internet: [dockanmarina.se](http://dockanmarina.se)

### Population

357,377 (2022)

### Currency

Swedish Krona (Svensk krona, pl. Svenska kronor), SEK

### Opening hours

Shops are open weekdays 10am-6pm and weekends, Saturdays 10am-4pm and Sundays noon-4pm.

### Newspapers

Sydsvenska — [www.sydsvenskan.se](http://www.sydsvenskan.se)

Skånska Dagbladet — [www.skd.se](http://www.skd.se)

Aftonbladet — [www.aftonbladet.se](http://www.aftonbladet.se)

The Local (in English) — [www.thelocal.se](http://www.thelocal.se)

### Emergency numbers

112

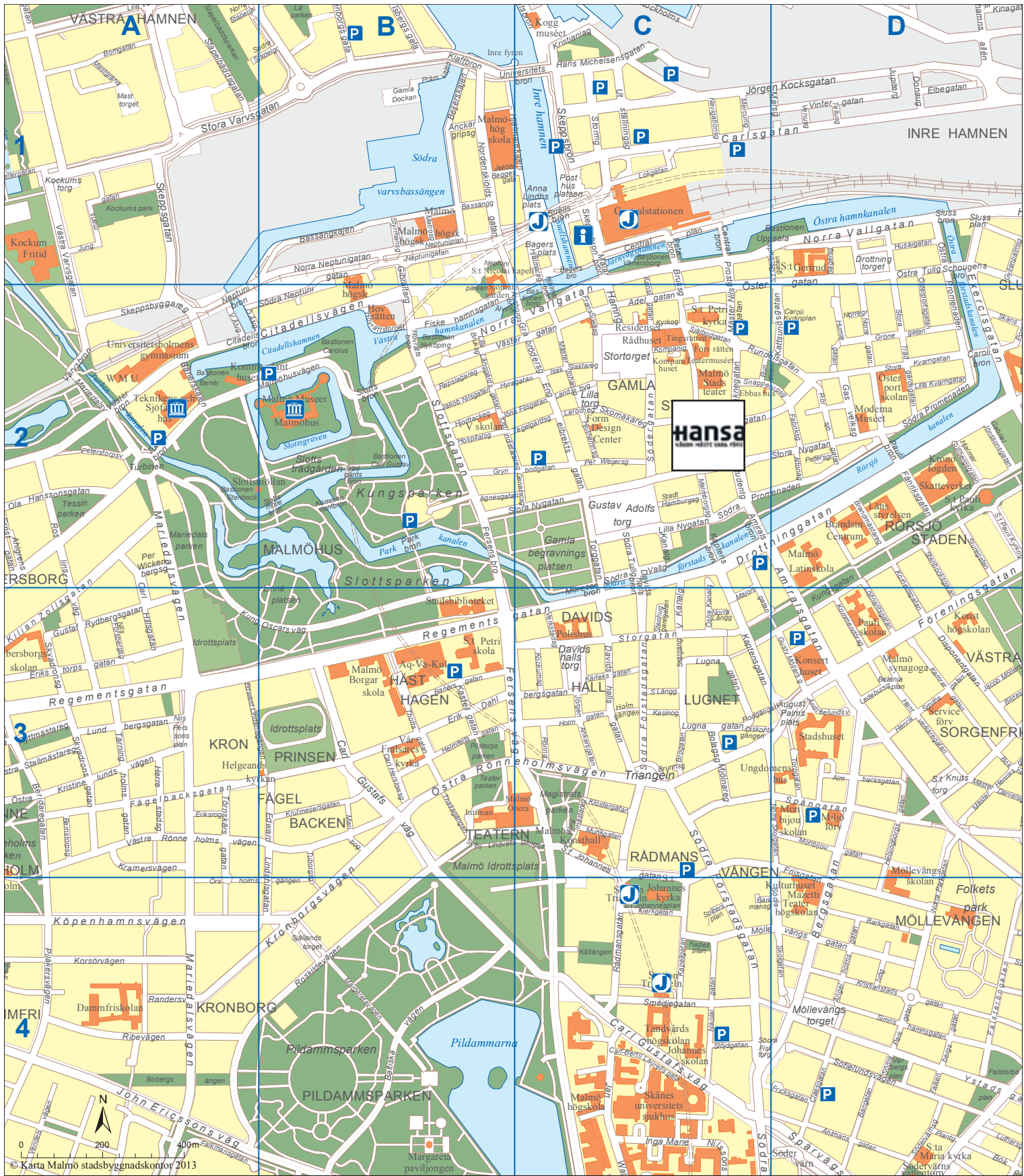
### Tourist information

There are a number of Infopoints around the city that provide basic tourist information for visitors in the form of brochures, maps and other information. These Infopoints are located at:

- Emporia shopping center, Hyllie Boulevard 19
- Katrinetorp landeri, Katrinetorps allé 1
- Travelshop, Centralplan 10, Cykelgaraget, Malmö Centralstation
- Pressbyrån, Södergatan 11
- First Camp Malmö, Strandgatan 101
- Dockan Marina Malmö Cityhamn, Dockplatsen 1
- Malmö Airport, Visitors Center, Malmö – Sturup
- Moderna Museet Malmö, Ola Billgrens plats 2-4
- Andelshamnen Lagunen, Vaktgatan 9, Limhamn

All Infopoint information counters are indicated with green and white signs.





Adelgatan	C2	Hantverkaregatan	D3	Norregatan	D2
Ahlmansgatan	D4	Helmfeltsgatan	B3	Ola Hanssonsgatan	A2
Almbacksgatan	D3	Helsingborgsgatan	D3 D4	Ostindiefararegatan	B2 C2
Amiralsgatan	D3	Henrik Smithsgatan	D3	Per Weijersgatan	C2
Anckargripsgatan	B1 C1	Holmgatan	C3	Pildammsvägen	C3 C4
August Palms plats	D3	Husargatan	D1	Pilåkersvägen	A4
Bagers plats	C1	Hyregatan	B2 C2	Regementsgatan	A3 B3
Baltiska vägen	B4	John Ericssons väg	A4	Ribevägen	A4
Baltzarsgatan	C2 D2	Jörgen Ankersgatan	C3	Roskildevägen	B4
Bangatan	D4	Jörgen Kocksgatan	C1 D1	Roslins väg	A2
Banérsgatan	B3	Kalendegatan	C2	Rundelsgatan	C2 D2
Barkgatan	D4	Kamrergatan	D3	Rådmansgatan	C4
Bergsgatan	D3 D4	Kapellgatan	C4	Rörsjögatan	D2
Beridaregatan	A3 A4	Kaptensgatan	C3 D3	Sankt Johannesgatan	C3 C4
Brandmästaregatan	D2	Kastellgatan	B3	Sankt Knuts torg	D3
Carl Gustafs väg	B3 C4	Kattsundsgatan	D2	Själbodgatan	C2
Carlsgatan	D1	Kilian Zollsgatan	A2 A3	Själlandstorget	B4
Centralplan	C1	Klerkgatan	C4	Skeppsbron	C1
Citadellsvägen	B2	Klostergatan	C3	Skvadronsgatan	A3
Claesgatan	D4	Kommendörsgatan	D3	Slottsgatan	B2
Dammfrivägen	A4	Kornettsgatan	D2 D3	Slussplan	D1
Davidshallsgatan	C3	Korsörvägen	A4	Smedjegatan	C4
Davidshallstorg	C3	Kristianstadsgatan	D4	Sofielundsvägen	D4
Disponentgatan	D3	Kronborgsvägen	B3 B4	Solbacksvägen	A4
Djäknegatan	C2	Krutmeijersgatan	B3	Spångatan	D3
Drottninggatan	C3 D2	Kung Oscars väg	A3 B3	Stenbocksgatan	D2 D3
Drottningtorget	D1	Kungsgatan	D2 D3	Stora Kvarngatan	D2
Edward Lindahls gatan	A4 B3	Köpenhamnsvägen	A4	Stora Nygatan	C2 D2
Engelbrekts gatan	C2	Larmgatan	C2	Stora Trädgårdsgatan	D1 D2
Erik Dahlsbergsgatan	B3	Lilla Nygatan	C2	Stora Varvsgatan	A1 B1
Erikstorps gatan	A3	Lilla torg	C2	Storgatan	C3
Exercisgatan	D2	Lugna gatan	C3	Stormgatan	C1
Falkenbergsgatan	D4	Lundbergsgatan	A3	Stortorget	C2
Falsterbogatan	D4	Långgårdsgatan	B2	Sturegatan	D2 D3
Falsterboplan	D4	Löjtnantsgatan	D3	Södergatan	C2
Fersens väg	B3	Majorsgatan	C2 C3	Södra Förstadsgatan	C3
Fiskehamnsgatan	B2 C1	Margaretavägen	B4	Södra Neptunigatan	B1
Friisgatan	C3 D4	Mariedalsvägen	A2 A3 A4	Södra Parkgatan	D4
Fänriks gatan	D2	Monbijougatan	D3	Södra Promenaden	D2
Fågelbacksgatan	A3 B3	Munkgatan	C3	Södra Skolgatan	C4
Föreningsgatan	C3 D3	Mäster Henriksgatan	D3	Södra Vallgatan	C2
Gibraltargatan	B1 B2	Mäster Johansgatan	C2	Tessins väg	A2
Grynbodgatan	B2 C2	Möllevångstorget	D4	Thottsgatan	B3
Gråbrödersgatan	C2	Navigationsgatan	C1	Torggatan	C2
Grönegatan	D2	Nikolaigatan	C4	Triangeln	C3
Gustaf Rydbergsgatan	A3	Norra Neptunigatan	B1	Tärningholmshuset	A3
Gustav Adolfs torg	C2	Norra Parkgatan	D3 D4	Törnskärsgatan	A3
Gustav Möllers gata	D3	Norra Skolgatan	C3	Utställningsgatan	C1
Hamngatan	C1 C2	Norra Vallgatan	B2 C1 C2 D1	Vendelsvägen	A4

Vintergatan	D1	Ängelholmsgatan	D4	Östra Promenaden	D1 D2
Västergatan	B2	Östergatan	D2	Östra Rönneholmsvägen	B3 C3
Västra Rönneholmsvägen	A3	Östra Kristinelundsvägen	A3	Östra Tullgatan	D1
Ystadsgatan	D4				