



Lech Zürs

in collaboration with Lech Zürs Tourismus GmbH

Photo: Lech Zürs Tourismus by Sepp Mallaun



Lech Zuers Tourimus

For over a century, guaranteed snow, hospitality, tradition and sophisticated tranquillity have been attracting winter sports enthusiasts from all over the world to Lech Zürs am Arlberg. It is one of the select group of twelve villages known as the "Best of the Alps". It is not only ambitious sportspeople who appreciate this heavenly winter landscape. The winter season 2016/2017 also has plenty to offer walkers, gourmets and culture lovers.

Ski Arlberg provides an unparalleled skiing experience with a total of 87 cable cars and lifts, 305 kilometres of ski runs and 200 kilometres of high Alpine deep powder snow runs.



Lech Zürs Tourismus GmbH



Lech Zuers Tourismus by Christoph Schoech

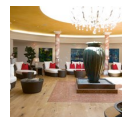
Featured

Skischool Exklusiv Berg - Oberlech

Arlberg and the ski schools of Lech, Oberlech and Zürs make an outstanding combination. On the one hand, there is the

Game watching / Game feeding

Wild animals, particularly the native red deer, are shy forest dwellers and you don't very often catch sight of them in the wi...



Burg Vital Spa

vitalSPA with 3.800 m² and 900 m² sunbathing area
The team of qualified, ...



Huber-Hus Museum

The Huber-Hus Museum is on the Schlosskopfplatz. The traditional wooden Wals...



Krone Spa & Beauty

Massages Available at Krone Spa & Beauty
Classic, Far-Eastern, Relaxing,

Top 5



Skiing

305 kilometres of ski slopes of all levels of difficulty and 200 kilometres ...



Heliskiing

Heli-skiing offers freeride aficionados a truly memorable experience. Lech Z...



Cross-country skiing

With its extremely well prepared cross-country ski trails and skating routes...



The White Ring - The Race

In 2006, "The White Ring - The Race" took place for the first time. It has l...

Run of fame - maximum skiing ex...

With the new Flexenbahn, a spectacular skiing run will be created: The new "Run of Fame" has been dedicated to the Arlberg

THE CITY



Lech Zürs Tourismus GmbH

Outstanding natural conditions, a winter sports offering that is unequalled and an excellent tourist infrastructure, together with cordial hospitality, outstanding cuisine and an inspiring combination of tradition and modernity - these are the ingredients that make your winter holiday in Lech Zürs am Alberg unforgettable.

Lech am Arlberg - elegant, stylish
Stylish Lech with its sunny terrace at Oberlech is synonymous with top hotels, restaurants and cosmopolitan flair, and is a popular holiday destination with the European aristocracy. That being said, it has not lost any of its original mountain village charm. Known for its extensive ski runs and routes, perfect winter days are rounded off in this "World Gourmet Village" at award winning mountain lodges and restaurants. One of the many events that take place in Lech is the legendary White Ring - a race which nowadays attracts up to 1,000 participants. The White Ring is a unique ski circuit in the Alps between Lech, Zürs, Zug and Oberlech, the very heart of this excellent ski area.

Zürs am Arlberg - exquisite, prominent
Immediately after the Flexen Pass and flanked by mountain slopes is the small yet very exclusive village of Zürs, a popular meeting place for the international jet set. Especially appreciated for

its wide, treeless slopes and deep snow, it enjoys the reputation of being a deep snow Mecca. This 150 inhabitant village also has a hangar, from which adventurous heli-ski tours can be made. Arlberg is the only place Austria-wide where heli-skiing is available: with a choice of two different peaks, both expert and intermediate skiers can enjoy this unparalleled experience from Monday to Friday, excluding bank holidays and always accompanied by a trained guide. Zürs is known not least for its vibrant night life in trendy bars and fashionable clubs.

DO & SEE

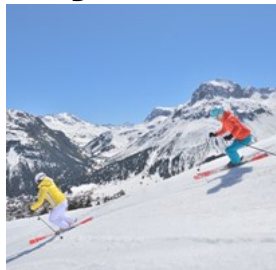


Lech Zuers Tourismus by Christoph Schoech

Alpine skiing is a major priority in Lech Zürs am Arlberg. For decades the Arlberg has been known as the "cradle of Alpine skiing" and casts a spell over enthusiastic skiers year after year, winter after winter.

People who like alternative winter sports will find ideal conditions and lots on offer in Lech Zürs am Arlberg. There are fantastic routes for cross-country skiers and snowshoers. In addition, visitors can enjoy romantic horse-drawn sleigh rides through the snow-covered landscape and curling.

Skiing



305 kilometres of ski slopes of all levels of difficulty and 200 kilometres of exclusive deep powder snow runs make Ski Arlberg a

unique winter sports resort. The five villages of Lech, Zürs, Stuben, St. Christoph and St. Anton am Arlberg open their doors onto the fascinating world of the finest powder snow and majestic Alpine peaks, of ample variety and a unique sense of freedom.

In winter 2016/17 the new Flexenbahn between Zürs and Stuben/Rauz will be opened, thus providing a link for the entire Arlberg skiing region - making it possible to easily reach all Arlberg skiing locations on skis. This makes the Arlberg skiing region the largest continuous skiing area in Austria, making skiing and ski holidays even more versatile and comfortable!

Photo: Lech Zürs Tourismus_ by Sepp Mallaun

Opening hours: 9.00am - 4 pm

Phone: +43 5583 28240

Internet: www.skiarlberg.at

Email: info@skiarlberg.at

Heliskiing



Heli-skiing offers freeride aficionados a truly memorable experience. Lech Zürs is the only resort in Austria to offer packages for this exciting

snow activity. You can choose between two magnificent peaks: the "Mehlsack" summit is ideal for experienced skiers, while the "Schneetäli-Orgelscharte" is recommended for skiers with intermediate skills - and is particularly attractive in the spring on the

hard-packed snow. Heli-skiing packages are for up to four people including the ski guide and can be booked directly through the ski schools in Lech and Zürs.

Photo: Lech Zürs Tourismus by Sepp Mallaun

Opening hours: in the winter season from monday to friday

Internet: www.lechzuers.com/heliskiing

Cross-country skiing



With its extremely well prepared cross-country ski trails and skating routes, Lech Zürs am Arlberg offers cross-country skiers

everything their hearts desire. Guaranteed snow and 27 kilometres of varied cross-country trails will delight both casual and professional sportspeople. The cross-country trails can be found amidst the fascinating Alpine mountain landscape and can be used free during the whole season.

Photo: Lech Zürs Tourismus by Sepp Mallaun

Address: Lech Zürs am Arlberg

More Info: free of charge

The White Ring - The Race



In 2006, "The White Ring - The Race" took place for the first time. It has long since become a "cult race" with an attractive supporting programme.

Participants have to rise to the challenge of 22 kilometres of pistes and 5,500 metres of ascent. "The White Ring - The Race" is thus "the world's longest ski race". Registration takes place in September 2016. Incidentally, the course record is held by former downhill ski racer Patrick Ortlieb with a time of 44:35:07 minutes. It

remains to be seen whether this record will be broken on the 10th birthday of "The White Ring - The Race".

Save the date: 19.01.2019

Photo: Lech Zuers Tourismus

Address: Lech Zürs am Arlberg

Phone: +43 5583 2161

Internet: www.lechzuers.com/the-white-ring-the-race

Email: info@lech-zuers.at

Run of fame - maximum skiing experience

With the new Flexenbahn, a spectacular skiing run will be created: The new "Run of Fame" has been dedicated to the Arlberg skiing stars and boosts the skiing experience to a maximum of 65 downhill skiing kilometres and an incredible altitude difference of 18,000 metres. The skiing run leads across the Arlberg and takes in the entire dimension of the fully connected skiing area - from Warth in the north via Lech Zürs with the new Flexenbahn to St. Anton/Rendl in the south - the entire Arlberg skiing area will be covered. In addition, once a year there will be a "Hunt of Fame" - a top class ski race along the new skiing run on the Arlberg.

Internet: www.run-of-fame.ski

Winter Hiking Trails



The over 40 kilometre long network of winter trails around Lech Zürs am Arlberg takes you through a unique winter landscape, with the

permanent presence of clear, fresh winter air, crisp snow and a breathtaking view over the surrounding peaks. Not only the sun terraces, huts and "Alps", but also numerous staging points invite you to take a well earned rest. Experience the stillness and enjoy nature in her

primordial form.

Photo: Lech Zürs Tourismus by Christoph Schoech

Horse drawn sleigh rides



Whether by day or at night - a ride on a horse-drawn sleigh is always a highlight of your winter holiday!

Photo: Lech Zürs Tourismus by Christoph Schoech

Internet: www.lechzuers.com/horse-drawn-sleigh-rides

Game watching / Game feeding

Wild animals, particularly the native red deer, are shy forest dwellers and you don't very often catch sight of them in the wild.

However, during the hard winter months when food becomes scarce, deer venture very close to populated areas and almost forget they are afraid of people. This means you can watch majestic deer feeding at dusk at close range. Experience this unusual natural spectacle from the shelter of a hide. Every Tuesday during the winter season we offer guided hikes to watch the wildlife. Further information and reservations at Lech Zürs Information.

Address: Dorf 2, 6764 Lech am Arlberg

Phone: +43 5583 21610

Internet: www.lechzuers.com

Email: info@lech-zuers.at

Toboggan run Oberlech - Lech

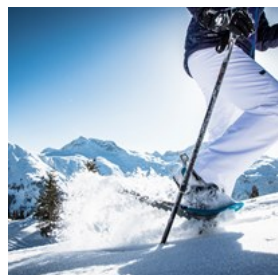


A 1.2-kilometre toboggan run winds its way through the forest of Lech and has several tight twists in store. And the high-speed descent just before the

last station is guaranteed to cause adrenaline levels to really skyrocket. Tremendous fun which can be repeated quickly as the Oberlech mountain railway takes adventurous souls back to the start within four minutes.

Photo: Lech Zürs am Arlberg by Sepp Mallaun
Address: Dorf 201, 6764 Lech am Arlberg
Opening hours: daily 09:00 am to 10:00 pm
Phone: +43 5583 23500
Internet: www.lechzuers.com/tobogganing

Snowshoeing



Modern technology makes it possible. While it used to be infinitely tedious to trudge through the winter landscape despite wearing

snowshoes, snowshoeing is today one of the most pleasant and most relaxing ways to exercise in the open air during winter. And what's more, snowshoeing is one of the sustainable winter sports.

That is because it allows everything that is good for relaxation and revival to be combined - nature as far as the eye can see, clear, fresh mountain air and steady, rhythmic exercise. The great thing about it is that no special knowledge or specific training are needed for snowshoeing. Whoever wants to try it out can rent the equipment on-site - Lech Zürs Tourist Office has the necessary information.

Buckle up the snowshoes and get moving. Fans of this sport will find an almost endless array of possibilities in Lech Zürs. Highly recommended: a hike with a guide. The guide knows the area inside out and leads hikers on the most beautiful routes to the most amazing places in Lech Zürs. Not only sun terraces, huts and "Alps", but also numerous staging points invite you to take a well earned rest. Experience the stillness and enjoy

nature in her primordial form.

Photo: Lech Zürs Tourismus by Christoph Schoech
Address: Lech Zürs am Arlberg
Phone: +43 5583 21610
Internet: www.lechzuers.com/winter-hiking
Email: info@lech-zuers.at

Skischool Lech



Arlberg and the ski schools of Lech, Oberlech and Zürs make an outstanding combination. On the one hand, there is the fascination of an

exceptional ski area and, on the other, a range of ski schools which are striving to surpass their guests' expectations.

Skischool Lech group courses and private instruction

- Ski courses for children aged between 4 1/2 - 12 years
- Location: Lech Kinderland near the Flühenlift & Lech-Oberlech ski slopes
- Lunch taken together in one of the restaurants at the slope (costs: € 12,50 (lunch & drink) chips "kids menu" available at the ski school
- Meeting point group assignment: 10.00 am at Hotel Arlberg
- Group courses in 6 different skill levels (Special: "Early Bird" intensive courses in small groups with max. 5 children)

Photo: Skischule Lech
Address: Tannberg 185, 6764 Lech am Arlberg
Opening hours: Sun-Fri 8.30 am - 5.00 pm, Sat 8.30 am - 6.00 pm.
Phone: +43 5583 2355
Internet: www.skilech.info
Email: sport@skilech.info

Skischool Oberlech

Arlberg and the ski schools of Lech, Oberlech and Zürs make an outstanding combination. On the one hand, there is the fascination of an exceptional ski area and, on the other, a range of ski schools which are striving to surpass their guests' expectations.

Skischool Oberlech group courses and private instruction

-- Ski courses for children aged 31/2 years and older

- Location: Oberlech Kinderland & Lech-Oberlech ski slopes

- Lunch taken together at the Burg Hotel possible (costs: € 13,- incl. lunch & drink)

- Meeting point group assignment: 9.30 am in front of the Hotel Sonnenburg

- Group courses available in 10 different skill levels (min. 4 people per group)

- Highlight: Children's ski race with award ceremony (Fridays)

Address: Oberlech 556, 6764 Lech am Arlberg

Opening hours: daily 8.30 am - 5.00 pm.

Phone: +43 5583 2007

Internet: www.skischule-oberlech.at

Email: info@skischule-oberlech.at

Skischool Zürs

Arlberg and the ski schools of Lech, Oberlech and Zürs make an outstanding combination. On the one hand, there is the fascination of an exceptional ski area and, on the other, a range of ski schools which are striving to surpass their guests' expectations.

Skischool Zürs group courses and private instruction

-- Ski courses for children aged 4 years and older

- Location: Bockis Kinderland Zürs

- Lunch taken together possible (costs: € 18,- incl. lunch & drink)

- Meeting point group assignment: 09.20 am at the Edelweiß meeting site next

to the large snowman (children are taken to the ski area by the ski train "Bocki Express" and back again)

- Highlight: Children's ski race with award ceremony (Fridays)

Address: Zürs 277, 6763 Zürs am Arlberg

Opening hours: daily 8.00 a.m. - 6.00 p.m.

Phone: +43 5583 2611

Internet: www.skischule-zuers.at

Email: office@skischule-zuers.at

Schneesportschule Omeshorn Alpincenter Lech

Arlberg and the ski schools of Lech, Oberlech and Zürs make an outstanding combination. On the one hand, there is the fascination of an exceptional ski area and, on the other, a range of ski schools which are striving to surpass their guests' expectations.

Schneesportschule Omeshorn Alpincenter
Lech: private instruction

Address: Dorf 443, 6764 Lech am Arlberg

Phone: +43 5583 39880

Internet: www.alpincenter-lech.at

Email: info@alpincenter-lech.at

More Info: daily 8.30 am - noon & 2.00 - 5.00 pm

Skischool Exklusiv Berg - Oberlech

Arlberg and the ski schools of Lech, Oberlech and Zürs make an outstanding combination. On the one hand, there is the fascination of an exceptional ski area and, on the other, a range of ski schools which are striving to surpass their guests' expectations.

Skischool Exklusiv Berg Oberlech: private instruction

Address: Oberlech 455, 6764 Lech am Arlberg
Phone: +43 664 5408544
Internet: www.skitom.com
Email: info@skitom.com

Schneesportschule Wiesele

Arlberg and the ski schools of Lech, Oberlech and Zürs make an outstanding combination. On the one hand, there is the fascination of an exceptional ski area and, on the other, a range of ski schools which are striving to surpass their guests' expectations.

Address: Zürs 74, 6763 Zürs am Arlberg
Phone: +43 5552 90904
Internet: www.schneesportschule-wiesele-zuers.com
Email: bruno_walch@gmx.at

Tanzcafé Arlberg

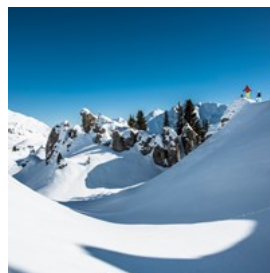


Whether it's swing, boogie, nu-jazz or big band, during the first two weeks of April the sundecks and bars of the elegant Lech and Zürs

hotels will be transformed into stages featuring top musicians performing a variety of genres. This is where nostalgic jazz sounds meet electro beats, where modern pop songs meet vintage music, and where skiers and music lovers become one. Go from making turns on the slopes to turning heads on the dance floor !
Vintage Music Festival from 1 to 18 April 2019!

Photo: Lech Zürs Tourismus
Address: Lech Zürs am Arlberg
Opening hours: 1 to 18 April 2018
Phone: +43 5583 2161
Internet: www.lechzuers.com/tanzcafe-arlberg
Email: info@lech-zuers.at

Guided torch-snowshoeing



pm

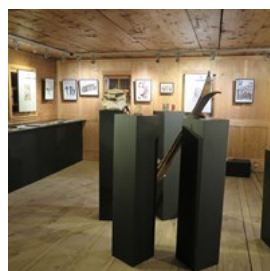
Every Tuesday and Thursday: On Tuesdays: Guided hike through the Zugertal with torches and hot drinks. Reservation until Monday 04.00

On Thursdays: Guided hike to Oberlech with torches and hot drinks.
Reservation until Wednesday 04.00 pm

Information and registration: Snow & Fun: +43 6769771880

Photo: Lech Zuers Tourismus by Christoph Schoech
Phone: +43 6769771880

Huber-Hus Museum



The Huber-Hus Museum is on the Schlosskopfplatz. The traditional wooden Walserhaus built in 1590 invites you to find out about the life and work of farmers. This year's special exhibition is devoted to the "Dying hours"

Opening hours: Tuesday, Thursday, Sunday from 3 pm to 6 pm

For further information please call: +43 (0)5583 2213-240

To the museum

Photo: Lech Zürs Tourismus GmbH
Address: Dorf 26, 6764 Lech am Arlberg
Opening hours: Tuesday, Thursday, Sunday from 3 pm to 6 pm
Phone: +43 5583 2213240

Internet: www.lechmuseum.at

Tannberg Museum



The historic Walser Museum is located in the fire station on the road to Stubenbach. The collection displays objects from dairy farming,

alpine skiing, ecclesiastical folklore, artisanry, animal husbandry, home décor, and textile production.

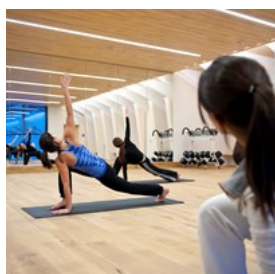
Opening times: From December 28 every Monday and Wednesday from 3 pm to 6 pm. Entry is free / donations welcome. Special guided tours on application.

Walsermuseum Lech-Tannberg | chairwoman Veronika Walch

Phone.: 0+43 (0) 664 24 23 58 | museumsverein.lech@aon.at

Photo: Lech Zürs Tourismus GmbH
Address: Dorf 329, 6764 Lech am Arlberg
Opening hours: every Monday and Wednesday from 3 pm to 6 pm
Phone: +43 664 24 23 580
Email: museumsverein.lech@aon.at

sport.park.lech



We would like to invite you to take a tour and discover the wonderful variety of possible activities guaranteed to enhance your wellbeing.

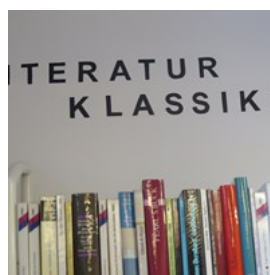
Active, athletic, playful.

We offer you a lot of possibilities which are all about movement. Fitness, cycling, tennis other ball sports (badminton, volleyball, soccer, handball, basketball, ping pong,...), climbing and bouldering as well as wellness area to relax and

the comfy sports lounge cafe.

Photo: Lech Zürs Tourismus_by Alex Kaiser
Address: Strass 456, 6764 Lech am Arlberg
Public Transport: serviced by bus line no. 5 during winter season
Opening hours: Sunday - Friday: 10am - 11pm, Saturday - 3pm - 11pm
Phone: +43 5583 41850
Internet: www.sport-park-lech.at
Email: office@sport-park-lech.at

Library

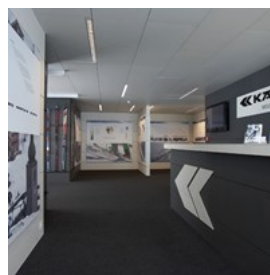


More than 4400 books are available. Come in and have a look. Besuchen Sie uns in der Gemeindebücherei Lech im Servicecenter und tauchen Sie ein in die Welt der Abenteuer.

Mehr als 4400 Bücher stehen Ihnen dabei zur Verfügung!

Photo: Lech Zürs Tourismus
Address: Dorf 164, 6764 Lech am Arlberg
Opening hours: Monday 3pm - 5pm, Wednesday 10am - 12 noon & 3pm - 5pm | Friday 3pm - 5pm
Phone: +43 5583 2213-241

Kästle Museum



You will find Lech's Kästle Mountain Museum in the top station of the Rüfikopf II cable car. Marvel at historic artwork, ski designs from

bygone times and many other items on display from the history of the successful Austrian ski brand. Open during the Rübifbahn operating hours.

Photo: Kästle Museum
Opening hours: Open during the Rübifbahn operating hours.

Around the ice



The natural ice rink in Zürs is a particular highlight. You can turn pirouettes and enjoy the view over the surrounding apine

scenery.

For further information and reservation please call: +43 5583 2245

Ice skating rink in Lech

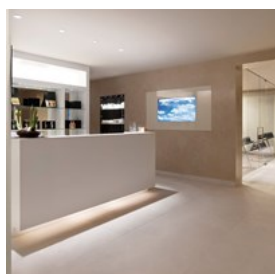
The first and only air-conditioned hotel ice rink in Europe in the Hotel Monzabon offers you 300 square metres of artificial ice for ice skating and curling.

Photo: Lech Zürs Tourismus GmbH

Internet: www.lechzuers.com/ice-skating-and-curling

Email: info@lech-zuers.at

Aurelio Day-Spa



The Aurelio Day Spa at the Design-Boutique Hotel Aurelio offers exclusive treatments, a gym with personal trainer, an indoor

activity pool (23m in length) as well as a Jacuzzi, an extensive thermal suite with two saunas and a streambath as well as two relaxation areas.

Appointments on request.

Photo: Aurelio

Address: Tannberg 130, 6764 Lech am Arlberg

Opening hours: 9 am - 3 pm

Phone: +43 5583 2214

Internet: www.aureliolech.com

Email: office@aureliolech.com

Burg Vital Spa



vitalSPA with 3.800 m² and 900 m² sunbathing area. The team of qualified, sensitive therapists and experienced trainers,

they have given much thought to maximizing their guests' relaxation and physical and spiritual regeneration during their stay at the Burg Vital Resort.

Appointments on request.

Photo: Burg Vital

Address: Oberlech 568, 6764 Lech am Arlberg

Opening hours: 9 a.m. - 8 p.m.

Phone: +43 5583 3140

Internet: www.burgvitalresort.com/en/vitalspa

Krone Spa & Beauty



Massages Available at Krone Spa & Beauty Classic, Far-Eastern, Relaxing, Ayurvedic: Time for Wellness in Lech. Your spa hotel in Lech, the

Romantic Hotel Krone, offers a peaceful hideaway for all those seeking total relaxation and comfort during your holidays in Lech at the Arlberg Massif. With an extensive selection of massages available: you and your body are in for a luxurious, sensual treat.

Rich cosmetic and facial treatments are at hand in the Krone-SPA & Beauty area of Romantic Hotel Krone, your five star spa hotel in Lech. Sit back, close your eyes and enjoy exceptional beauty treatments for face, neck and décolletage during your spa break in the Arlberg Massif in Austria.

Appointments on request.

Photo: Romantik Hotel Die Krone von Lech
Address: Dorf 13, 6764 Lech am Arlberg
Opening hours: Appointments on request.
Phone: +43 5583 2551
Internet: www.romantikhotelkrone-lech.at/en/spa_und_fitness/spa-fitness.php

Post Beauty & Spa



The beauty & spa-complex contains a large sauna-area, a gym with state-of-the-art equipment, an outdoor pool as well as a kids'

pool with numerous attractions.

Appointments on request.

Photo: Hotel Gasthof Post
Address: Dorf 11, 6764 Lech am Arlberg
Opening hours: open daily from 9 am - 8 pm
Phone: +43 5583 2206101
Internet: www.postlech.com
Email: spa@postlech.com

DINING



Lech Zuers Tourismus

Delicacies for gourmets

Numerous gastronomic awards, the highest density of highly-rated restaurants compared with other international locations, an ambience which emphasises hospitality and epicureanism, the "LöffelWeise" series of gourmet events - the sophisticated mountain village of Lech am Arlberg offers all this. In 2008, it was named

"World Gourmet Village" at the Vöslauer-Falstaff Awards. Its outstanding restaurants attract connoisseurs of good food from all over the world to epicurean flights of fancy at 1,450 metres above sea level and beyond.

More time, more space - time for enjoyment That is the motto that Lech Zürs am Arlberg follows in terms of gastronomy. During the winter season, gourmets are pampered and can experience delicacies of the highest order. "The fact is that there are more and more guests who value Lech and Zürs not just for the pistes, but for the outstanding gastronomy," said Karl Hohenlohe, publisher of the Austrian Gault Millau.

Achtele - Das WeinRestaurant

Let us spoil you in our cosy wine restaurant right in the middle of Zug - above the church. It is a pleasure for us to make you tasty, traditional meals with a modern touch. Learn more about the wide variety of Austrian wines - we serve a wide selection of Austrian wines which you can also enjoy by the glass. Wide selection of magnums and double magnums. We will be delighted to welcome you to our wine restaurant from 6.00 pm to 12.00 midnight. Hot food until 11.00 pm. Vegetarian meals available. Closed on Sundays.

Address: Zug 525, 6764 Lech am Arlberg
Opening hours: from 6.00 pm to midnight, closed on sundays
Phone: +43 5583 3937
Internet: www.staefeli.at/en/achtele.html
Email: info@staefeli.at

Allerlei - Krämerei + Genussraum

The Allerlei lures with great shopping and enjoyment!

Cosy coffee stop, tasty delicacies and small

meals, flans and cake specialities, Austrian wines (also by the glass) prosecco + champagne, SCHWIWAGO the wine from the Arlberg and other quality wines are available.

Address: Zug 503, 6764 Lech am Arlberg
Opening hours: daily from 8.30 am to 6 pm
Internet: www.staefeli.at/en/allerlei.html
Email: info@staefeli.at

Almhof Schneider

"Wunderkammer" and "Restaurant im Almhof Schneider" Contemporary alpine cuisine with traditional Austrian roots. Terrace with grill. A la carte meals from 12.00 noon until 10.00 pm. Light lunches. Fireplace hall with austrian pastries and piano music. Wine bar.

Address: Tannberg 59, 6764 Lech am Arlberg
Opening hours: À la carte: 12 a.m. - 10 p.m.
Phone: +43 5583 3500
Internet: www.almhof.at/#/en/gastronomy
Email: info@almhof.at

Älpele

At the Älpele we enjoy a pleasant occasion with the most beautiful landscape. An unforgettable trip into the beautiful Zugertal - and alpine cuisine at its best. The Älpele can be reached on foot, Snowshoeing, horse-drawn carriage or with the "Älpele-Snowmobile". 300 years old, in the „Cia Haus“ enjoy simple traditional dishes with special selected ingredients from the local region and a fine selection of Austrian wines. The new tenant Franz-Josef Walch and his team are looking forward to your visit.

Opening hours: Tue-Sun 11 am - 5.30 pm
Evenings at request. Reservations by phone.

Address: Zug 61, 6764 Lech am Arlberg
Opening hours: Tue - Sun: 11a.m - 5.30 p.m.
Phone: +43 5583 3388
Internet:
www.aelpele-lech.at/willkommen-im-gasthaus-aelpele.html

Email: office@aelpele-lech.at

Alpenblick

Home-style cooking

Address: Zug 10, 6764 Lech am Arlberg
Phone: +43 5583 2755

Alpenrestaurant Valluga

Guests at the hotel restaurant are treated the exquisite regional and mediterranean delicacies. In the Alpenrestaurant Valluga's à la carte area, special delicacies with a more international touch are served.

Epicures will find the Alpenhotel Valluga **** offers a complete culinary programme in excellent four-star quality. Aside from the hotel restaurant for half-board hotel guests, the Alpenrestaurant Valluga will start welcoming external guests in the winter season 2015. This new area offers delicious food à la carte. In addition to the restaurant, the terrace, bar, and lounge area have been newly designed.

Guests can expect many home-made products and an exquisite choice of drinks. At lunchtime fast and sophisticated menus are served - ideal for a ski break. The exquisite evening menu is complemented by competent wine tips.

Address: Zürs 280, 6763 Zürs
Opening hours: Daily from 8 am to 12 midnight
Phone: +43 5583 2426
Internet:
www.hotel-valluga.com/#!alpenrestaurant-valluga-e/c1yrv
Email: info@hotel-valluga.com

Alphorn

Alpine cosiness, personally charming and enjoyably romantic - that's the Alphorn in Zug. Hearty dishes from the region to tuck into, bubbling fondue dishes and selected wines are waiting for you to try. Your hosts Ingrid and

Heinz Griesser will personally take care of your culinary pampering in a cosy atmosphere. Closed on Tuesdays.

Address: Zug 449, 6764 Lech am Arlberg
Phone: +43 5583 2750
Internet: www.alphorn-zug.at/en/culinary/
Email: info@alphorn-zug.at

Alpin Vital Hotel

A restaurant built in the alpine style, with Austrian cuisine and a focus on local produce, 4 different beers on tap, a well-stocked wine cellar with wine served by the glass. Open from 11 am to midnight, hot meals from noon until 10 pm.

Address: Lech 256, 6764 Lech am Arlberg
Opening hours: 11 a.m. - 12 p.m. Closed on Wednesdays
Phone: +43 5583 3666
Internet: www.alpinvital-lech.at/en/restaurant-2/
Email: info@alpinvital-lech.at

Alter Goldener Berg

500 Years of Austrian Hospitality in Oberlech, Austria

The traditional restaurant above Lech, by the name of "Alter Goldener Berg" (The Old Gold Mountain) counts amongst one of the most popular restaurants in Lech at the Arlberg.

Hot meals from 11.30 am, invigorating skier specialities for lunch on the sun terrace, après-ski in one of the cosy rooms and fondue and Austrian specialities around the open fireplace in the evening.

We offer documented wine tastings on request.

Live music Tuesday and Thursday from 3 pm.

Address: Oberlech 117, 6764 Lech am Arlberg
Opening hours: daily from 11:30 am until 1:00 am | dinner until 9:30 pm
Phone: +43 5583 2205

Internet: www.goldenerberg.co.uk/alter-goldener-berg.html
Email: happy@GoldenerBerg.at

Ambrosius

International and Alpine cuisine, as well as traditional Austrian meals, ice cream specialities, cakes and pastries. Large, comfortable sun terrace, view of the village square, central location in the heart of town, next to the Rüfikopf station. Non-smoking-area.

Address: Rüfi Passage 229, 6764 Lech am Arlberg
Phone: +43 5583 41930
Internet: www.lech4you.com/restaurant-cafe-ambrosius-stube-zentral-in-lech/
Email: info@lech4you.com

Angelika Kauffmann Parlour

Art & Gusto at the cosy fireplace

Surrounded by engravings and graphics created by the Bregenzerwald-born co-founder of the Royal Academy in London Angelika Kauffmann you will be delighted by our daily alternating meals.

Every Wednesday classic fondue chinoise or cheese fondue.

Together with our meals enjoy our fine selection of Austrian wines.

An excellent combination of two passions in the Angelika Kauffman parlour: Host Hubert Schwärzler's passion about the visual artist Angelika Kauffmann (1741 - 1807) combined with the passion about cooking of our chef de cuisine.

We look forward to welcoming you - Claudia & Michael Schwärzler
Chef de cuisine - vita Georg Paar

A grand person from Styra having discovered his love of the Arlberg already at an early stage

Since more than 15 years (and more than 1000 skiing days!) Georg Paar has been contributing a major share to Lech's estimated culinary scenery during wintertime. However, during summertime Georg Paar usually travels around the world with purpose of professional education. Also at the Grand Prix Formula1 Georg Paar had already provided sustenance to the guests of Paddock-Club.

Since three years Georg Paar has been chef de cuisine at Hotel Haldenhof and he is always pampering our guests with his collage of open-minded and traditional culinary ideas.

Address: Tannberg 347, 6764 Lech am Arlberg
Opening hours: Monday to Friday | 7.00 pm - 9.00 pm
Phone: +43 5583 24440
Internet: reservation@haldenhof.at
Email: www.haldenhof.at/en_restaurant.html

Arlberg

You are welcome to have something to eat on our sun terrace where we can serve you light meals, hearty Austrian cakes or one of our famous pastries. In the evening you can also enjoy traditional local dishes outdoors, depending on the weather, or in our original Walser room.

Phone: +43 5583 2134
Internet: www.arlberghotel.at/restaurants-bar/
Email: info@arlberghotel.at

Auerhahn

In the lovely, original Walser room from the 16th century, we serve you our fondue specialities (cheese - bourguignon - chinoise - chocolate fondue), as well as traditional, local game dishes and hearty cuisine. Our wide range of fine wining and dining is available from 11 am to 11 pm.

Open daily!

Address: Zug 12 6764 Lech am Arlberg
Opening hours: Daily 11 a.m. - 11 p.m.
Phone: +43 5583 2754
Internet: www.auerhahn.co.at
Email: info@auerhahn.co.at

Aurelio

Inconspicuous elegance, comfort and chic are the backdrop to Austrian and international specialities at Aurelio's Restaurant. The sun terrace, located directly on Schlegelkopf, is the perfect place for a lunchtime snack or a drink with the Lech sunset. You can also enjoy a glass of wine in front of the open fire in our Lounge/Bar.

Address: Tannberg 130, 6764 Lech am Arlberg
Phone: +43 5583 2214
Internet: www.aureliolech.com
Email: reservation@aureliolech.com

Backstube Lech

The small café-confectionery with the special sophistication of typical Lech hospitality. Cakes - strudels - petit fours - gift items. Wholemeal bread and delicious pastries. Breakfast buffet until noon. Exquisite snacks. Sun terrace - wood burning stove. We spoil you daily from 7.45 am until 6 pm.

Address: Omesberg 352 6764 Lech am Arlberg
Opening hours: daily 7.45 a.m. - 6 p.m.
Phone: +43 5583 226344
Internet: www.backstubelech.at/
Email: martin.walch@backstubelech.at

Backstube Zürs

In the centre of Zürs you can purchase fresh bread, delicious pastries and fresh croissants in our new bakeshop im Posthaus, or treat yourself to a delicious breakfast or some sweet delicacies. We also offer cold and warm snacks for those in between-meal cravings.

Opening hours: Daily from 7.30 a.m. - 4.30 p.m.

Phone: +43 5583 2263825

Internet: www.backstubelech.at/

Email: martin.walch@backstubelech.at

Backstüble

Our small stand-up café is perfect for that little snack in between meals, for a scrumptious breakfast or for a quick coffee. Bread made from natural ingredients - fine pastries - strudels - takeaways.

Opening hours: 7 a.m. - 12.30 p.m. & 2.30 p.m. - 5 p.m.

Phone: +43 5583 3084-7

Internet: www.backstubelech.at/

Email: martin.walch@backstubelech.at

Balmalp

“Balmalp” - the highlight in Lech. Experience the breathtaking view of the Lech mountains over culinary specialities from the kitchen and the wine cellar. “360° Arlberg meets Asia” daily changing wok dishes as well as pasta and pizza specialities. The Balmalp is the first non-smoking mountain hut in the Alps. Pleasure smokers are warmly welcome in the outdoor bar to the sound of cool music.

Phone: +43 5583 3312

Internet: www.balmalp.at/

Email: balmalp@skiarlberg.at

Berghofstüble, Hotel Der Berghof

For delightful evenings in a special ambience. Enjoy an exquisite 6-course menu or a fondue evening. Austrian speciality buffets are featured on Thursdays. Hot food is available all day long also on the inviting sun terrace, as well as afternoon tea and cakes and weekly piano evenings.

Phone: +43 5583 2635

Internet:

www.derberghof.at/Hotel/Restaurant.aspx?lang=en-US

Email: info@derberghof.at

Bergkristall

Enjoy the marvellous view and the wonderful silence on our sun terrace. Let us spoil you with creative and excellent cuisine. In the evening, we serve numerous gastronomic highlights in our old traditional parlour or at the comfortable fireplace. Fondue evening on Mondays. Fresh fish hearty steaks and pasta. Warm dishes served from 12 am until 3 pm and from 6.30 pm until 10 pm

Address: Oberlech 382, 6764 Lech am Arlberg

Opening hours: 12 a.m. - 3 p.m. and 6.30 p.m. - 10 p.m.

Phone: +43 5583 2678

Internet: www.bergkristall-lech.at/en/geniesen-auf-hochstem-niveau-eng/

Email: bergkristall@wrann.at

Brunnenhof

Open again after a two-year creative sabbatical: the famous à la carte restaurant in the hotel Brunnenhof - with new ideas and specially balanced ingredients for body, mind and soul. Christine Thaler, head chef Eik Landferman and their team will be delighted to welcome you.

Address: Strass 146, 6764 Lech am Arlberg

Opening hours: Closed on Sunday evening and Monday

Phone: +43 5583 2349

Internet:

www.brunnenhof.com/cms/front_content.php?idcat=25

Email: info@brunnenhof.com

Burg Hotel

The Burg Hotel is situated right by the slope in Oberlech and invites guests to their famous sun terrace, or the Lechtaler parlour .

Address: Oberlech 266, 6764 Lech am Arlberg

Opening hours: Mun - Sun: 11.30 am - 5 pm and 6.30 pm - 9.30 pm

Phone: +43 5583 22910

Internet: www.burghotel-lech.com

Burg Vital Resort

Enjoy a light, natural cuisine based on local produce as well as Austrian specialities from 12 noon to 2.30 pm on the peaceful sun terrace.

Wine-lovers can enjoy a large selection of Austrian and international wines from our "old Austrian wine cellar". In the evening, it is our pleasure to pamper you in our à la carte restaurant "Griggeler Stuba", awarded with 3 Gault Millau toques. Closed Saturdays.

Address: Oberlech 568, 6764 Lech am Arlberg
Opening hours: Closed Saturdays
Phone: +43 5583 3140
Internet: www.burgvitalhotel.com/de/home.aspx
Email: office@burgvitalresort.com

Burgwald

Wonderful sun terrace, restaurant and "stone pine room" - directly on the ski slope. Typical Austrian dishes, homemade desserts & coffee-specialities served daily from 11 am till 4 pm on. In the evening please make a reservation.

Address: Oberlech 151, 6764 Lech am Arlberg
Phone: +43 5583 2310
Internet: www.petersboden.com/de/startseite/hotel-burgwald/essen/index.htm
Email: mail@hotelburgwald.com

Chesa, Hotel Edelweiß

In the Edelweiß hotel; international cuisine, Austrian specialities.

Address: Zürs 79, 6763 Zürs
Phone: +43 5583 2662
Internet:
www.edelweiss-arlberg.at/en/dining-celebrations/chesa
Email: welcome@edelweiss-arlberg.ocm

Crêperie Schüna

Crêperie Schüna is located right next to Hotel Sonnenburg in Oberlech. Here the finest crêpe are served daily from 11.30 am in a rustic cabin atmosphere.

Address: Oberlech 55, 6764 Lech am Arlberg

Opening hours: daily from 11.30 am

Phone: +43 5583 2147

Internet: www.sonnenburg.at

Cresta

Sporthotel Cresta, Oberlech - 1,700 metres closer to the sky

At Sporthotel Cresta in Oberlech you are definitely "on the top". Experience indulgent moments in a relaxed and cosy atmosphere. Whether you want to unwind in our restaurant or enjoy the panoramic view on the quiet sun terrace - your enjoyment is our success. Thanks to our ideal location - the slope that leads down to Lech is just outside our door - you might also like to stop off for lunch (lunch from 11:30am). At the Cresta we offer you culinary delicacies from wok stir fries, wraps, Vorarlberger Kässpätzle (egg noodles with cheese), soup specialities to exquisite desserts and much more! Our traditional and modern culinary delights are served accompanied by the finest premium wines from Austria and all over the world. Our passion is to serve your every need while holidaying in Oberlech. We offer you a first-class service with a smile.

Address: Oberlech 170, 6764 Lech am Arlberg
Opening hours: daily from 11:30 a.m.
Phone: +43 5583 2328
Internet: www.cresta.at/en
Email: info@cresta.at

Don Enzo Due Pizzeria

The only Pizzeria in Arlberg run by an Italian. We will spoil you with culinary delights and wines from various regions of Italy.

Address: Dorf 163, 6764 Lech am Arlberg
Opening hours: Monday to Sunday 11 a.m. bis 11 p.m.
Phone: +43 5583 2225

Die Ente in Zürs, Hotel Albona Nova

Treat and surprise yourself in Austria's smallest Gault Millau toque restaurant, not just with different types of duck but especially with exquisite meals of a very special kind. Our "Ente von Zürs" is open daily from 7.00 pm to 10.00 pm. Please make an advanced booking at the hotel Albona Nova.

Address: Zürs 217, 6763 Zürs am Arlberg
Opening hours: Daily from 7 p.m. - 10 p.m.
Phone: +43 5583 2341
Internet: www.albonanova.at/en/haubenrestaurant-gourmetrestaurant.html
Email: office@albonanova.at

Enzianstube, Hotel Enzian

International cuisine, Austrian specialities, fondue specialities, tartaren hut 11.30 am - 9.00 pm; reservations required in the evening!

Address: Zürs 84, 6763 Zürs am Arlberg
Opening hours: Daily 11.30 a.m. - 9 p.m.
Phone: +43 5583 22420
Internet: www.hotelenzian.com/
Email: office@hotelenzian.com

Flexenhäusl

At the Flexen Pass, directly on slope No. 10 - Zürser Täli; Fondue specialities, hearty Austrian specialities, home-style cooking.

Address: Zürs 286, 6763 Zürs am Arlberg
Opening hours: Tue to Sun 11 a.m. - 6 p.m.
Phone: +43 5583 4143
Internet:
www.edelweiss-arlberg.at/en/bars-lounge/flexenhaeusl
Email: welcome@edelweiss-arlberg.at

Formarin

Our chef will personally take care of your every need.

Our guests are welcome to wind down at the end of the day in the perfect surroundings of our

stylish restaurant. Take a seat at one of our elegantly set tables and allow yourself to be spoiled by our service team. In addition to our ever-changing menu, we can offer you a wide range of fine wines from our own cellar.

Our small dining room, which doubles up as our reading room and guest lounge during the afternoon, is transformed into our "à la Carte" restaurant in the evenings. Here our daytime guests can enjoy the culinary creations of our chef.

Address: Oberlech 255, 6764 Lech am Arlberg
Opening hours: Daily from 11.30 a.m. - 20.30 p.m. Closed on Mondays
Phone: +43 5583 2223
Internet: www.formarin.com/
Email: info@formarin.com

Fritz

Traditional Austrian à la carte cuisine. Fondue with advance order. Large sun terrace with wonderful view towards the Omeshorn. Own patisserie, kitchen and ice cream specialities. Hot food: lunch menu from 11 a.m. to 3 p.m., afternoon menu from 3 p.m. to 6 p.m., evening menu from 6 p.m. to 9.30 p.m. Enjoy your cigarette in the comfortable "Fasslstube". We are located between the Schwarzwand and the Flühen lifts. Closed on Wednesdays! (except Christmas, New Year's Day and in the Easter week).

Address: Anger 369, 6764 Lech am Arlberg
Opening hours: 11 a.m. - 9.30 p.m. Closed on Wednesdays
Phone: +43 5583 2650
Internet: www.cafe-fritz.at/tcms/cms/deutsch/cat_2/cId_2
Email: kontakt@cafe-fritz.at

FUX Restaurant + Bar + Kultur

One house - two restaurants! Being spoiled for choice was never so good. Will you go for the award-winning Euro-Asian cuisine or the fine

steakhouse with open charcoal grill? Whatever you choose, you can expect culinary enjoyment in a chic ambience and one of the best wine lists in Austria.

Address: Omesberg 587, 6764 Lech am Arlberg
Opening hours: Daily from 6 p.m. - 2 a.m.
Phone: +43 5583 2992
Internet: www.fux-mi.net
Email: fux@fux-mi.net

Gitti's Esszimmer

With only four tables, Gitti's dining room probably is the smallest restaurant in Lech. And that's exactly what it's supposed to be: small but fine!

Gitti's is a very special culinary refuge for the spoiled. Here it's like eating at home, in a private atmosphere. From mid June until the end of September the pots are steaming 4 days a week. The hostess Gitti Strolz prepares seasonal delicacies which can also be served on the big Schmelzhof terrace. The ingredients stem exclusively from the region. The mushrooms from the woodlands around Lech and the fresh fish from the pond in Zug. Here the guests can expect authentic regional cuisine with slight Mediterranean influences. Now be it a candlelight-dinner, a birthday party or wedding celebration in cozy surroundings - at Gitti's dining room it's all a pleasure.

Address: Omesberg 370, 6764 Lech am Arlberg
Opening hours: Fresh daily specials from 12.30 am - 4.30 pm
Fondue or dinner from 7.30 pm Closed on Tuesdays
Phone: +43 5583 37500
Internet: www.schmelzhof.com/en/gittis-esszimmer/
Email: hotel@schmelzhof.at

Goldener Berg, Bergstüberl

You can order Austrian specialities and the best regional and international cooking daily at the mountain in the Goldener Berg from 11:30 to

17:00, and from 19:00 you can order Austrian classics. Our wine cellar has over 1000 different types of wine from all over the world, and is one of the beststocked in Austria. Day and night, SUMMER and WINTER, we will make your visit to the Goldener Berg unforgettable.

Address: Oberlech 117, 6764 Lech am Arlberg
Phone: +43 5583 2205
Internet:
www.goldenerberg.co.uk/restaurant-overview-arlberg.html
Email: happy@goldenerberg.at

Goldener Berg, Johannesstübli

Johannistübli - For decades a Gault Millau toque award-winning restaurant.

We offer menus from Austria and around the world in the gourmet restaurant from 11.30 am to 2.30 pm and from 7 pm to 9 pm, always accompanied with the right wines by the glass. Top produce from local farmers. A cosy restaurant with a gourmet corner on the sun terrace and over 1000 wines from around the world. Documented wine tasting upon advance reservation.

Address: Oberlech 117, 6764 Lech am Arlberg
Opening hours: Daily from 11.30 a.m. - 2.30 p.m. and from 7 p.m. - 9 p.m.
Phone: +43 5583 2205
Internet: www.goldenerberg.co.uk/johannesstuebli-restaurant-arlberg.html
Email: happy@goldenerberg.at

Goldener Berg, Sonnenterasse

From winter 2012/2013 our à la carte guests can experience a whole new atmosphere on the sun terrace of the Goldener Berg: skiers will be indulged with lounge seating, a large grill on the terrace, finest delicacies for the grill with fresh salads, fine soups and starters and popular desserts from our patisserie. Daily (weather permitting) from 11:30 to 17:00.

Address: Oberlech 117, 6764 Lech am Arlberg
Opening hours: Daily from 11.30 a.m. - 5 p.m.
Phone: +43 5583 2205
Internet: www.goldenerberg.co.uk/bbq-terrace-arlberg.html
Email: happy@goldenerberg.at

Guggis

Austrian cuisine from noon to 2:30 pm. Large quiet sun terrace. Open every day.

Address: Zürs 432, 6763 Zürs am Arlberg
Opening hours: Zürs 432 6763 Zürs +43 (0)5583 2166
Phone: +43 5583 2166
Internet: www.guggis.at
Email: info@guggis.at

Hagen's Dorfmetzgerei

Hagen's Village butchers, right next to the Schlosskopflift has a range of hearty treats! We would love to welcome you, either to our Bistro with national, down-to-earth dishes, or in the shop where you will find meat and sausage products, bacon, and international cheese specialities as well as a choice of the finest Austrian wines and much more. Our opening hours: Monday to Saturday from 08:00 to 19:00.

Address: Dorf 134, 6764 Lech am Arlberg
Opening hours: Monday to Saturday 8 a.m. bis 7 p.m.
Phone: +43 5583 2303
Internet: www.hagens.at
Email: office@hagens.at

Hartenfels

Let yourself be pampered with Austrian and international specialities in our rustic à la carte "Stüberl". Select wines as well as fondues (order in advance). Open all day, hot meals from midday to 2 pm and from 6.30 pm to 9.30 pm. Closed Wednesday

Address: Zug 490, 6764 Lech am Arlberg
Opening hours: open all-day
Phone: +43 5583 3104
Internet: www.hotel-hartenfels.at/restaurant.php
Email: info@hartenfels.at

Hotel Hinterwies

From the ski slopes... At noon ski in - ski out with the Hinterwies lift to enjoy tasty austrian, italien food until 3 pm. In the afternoon take time for a quick beer at the bar, mulled wine on the sun terrace, a snack in the winter garden, a strudel in the ski history hall. Get a cue for your next descent. In the evening take pleasure in a private setting, fondue at the rustic fireplace table, menu or buffet, exquisite wines from the cellar, a delicious cocktail at the bar. From 7 pm to 9 pm. Reservation requested. ... to a delightful treat!

Address: Tannberg 186. 6764 Lech am Arlberg
Phone: +43 5583 2531-0
Internet: www.hinterwies.at/Culinary
Email: hotel.hinterwies@lech.at

Hirlanda

Family-run hotel for connoisseurs and gourmets; fish specialities, international and local specialities, Austrian specialities. Hot meals from 11.30 am - 10.00 pm. Member of "Chaîne des Rôtisseurs".

Address: Zürs 80 6763 Zürs
Opening hours: 11.30 a.m - 10 p.m.
Phone: +43 5583 2262
Internet: en.hirlanda.at/culinary-specialities/restaurant-zuers-arlberg
Email: hotel@hirlanda.at

Hûs Nr. 8

The "Hûs Nr. 8" (appr. 300 years old) next to the Filomena supermarket has been restored to its original condition. We'll serve you traditional dishes from old Walser recipes, tempting delicacies of Austrian cuisine; meat and cheese fondue as well as Raclette, hot stone, and roasted duckling (on request). Weekly new speciality menu. Open daily all day, on Mondays from 5 pm.

Address: Omesberg 8, 6764 Lech am Arlberg

Phone: +43 5583 33220
Internet: www.hus8.at/
Email: husnr8@aon.at

Ilga Stüble

Sun terrace directly on the piste, near the mountain station of the Lech - Oberlech cable car (7.00 am - 1.00 am with ski pass), in the evening you can float on board the cable car to the cosy "Ilga Stüble" or to the "Alte Stube", assorted fondues, raclette (from the original cheese block) and Austrian/international cuisine with organic delicacies from the region. Hot meals served from 11.00 am to 9.30 pm every day.

Non-smoking hotel.

Address: Oberlech 250, 6764 Lech am Arlberg
Opening hours: Warm meals from 11 a.m. - 9.30 p.m.
Phone: +43 5583 31210
Internet: www.hotel-ilga.at/ilga-stuble.html
Email: info@hotel-ilga.at

Jägerstube, Hotel Monzabon

Lunchtimes and evenings, Walserkoscht [food from the Walser Valley], as well as game and international dishes. The tea bar is open in the afternoon, with a selection of tea specialities to enjoy or take away with you. Pure indulgence with gateaux, pastries, biscuits and much more.

Address: Tannberg 228, 6764 Lech am Arlberg
Phone: +43 5583 21040
Internet: www.monzabon.at/
Email: hotel.monzabon@lech.at

Klösterle

"Klösterle - food and drink in a historic building". Fondue and great dishes in a Walser house preserved in its original style in Zug. The classic fondue restaura

Opening hours: Daily 2 p.m. - 5.30 p.m. from 7 p.m. on reservation Closed on Tuesdays
Phone: +43 5583 3190
Internet: www.almhof.at/#/en/home

Email: kloesterle@almhof.at

Kriegeralpe

The prettiest alpine hut on the Arlberg is opened both summer and winter. Built in the Tannberg Walser style. From 11 am we offer you local food with outstanding top wines. Enjoy your après-ski in a cosy, romantic hut with lots of fun and laughter.

Opening hours: Open from 11 a.m.
Phone: +43 664 4422697
Internet: www.burghotel-lech.com/en/burg/kriegeralpe.aspx
Email: info@burghotel-lech.com

Kristiania

Gourmet restaurant, open daily from 7:00 a.m., sun terrace, à la carte breakfast, lunch menu, special wine selection - received an award in 2010 from Wine Spectator, Löffelweise Gourmet Events

Address: Omesberg 331, 6764 Lech am Arlberg
Opening hours: open daily from 7:00 a.m.
Phone: +43 5583 25610
Internet: www.kristiania.at/de/20/restaurant.aspx
Email: info@kristiania.at

Krone-Stuben

The snow bar is the legendary après ski meeting point. In the historical Krone-Stuben (daily from 10 a.m. to 11 p.m.) and in the new Panoramasaal (daily at lunch- and tea-time) can you savour delicious Austrian breads/cakes/pastries), Austrian specialities and other delicacies to tempt your palate from the Hauben-Kitchen, accompanied by the finest wines

Address: Lech 13, 6764 Lech am Arlberg
Opening hours: daily 10 a.m. bis 11 p.m.
Phone: +43 5583 2551
Internet: www.romantikhotelkrone-lech.at/en/dining/krone-stuben-parlour.php
Email: email@kronelech.at

Lecher Stube

Enjoy excellent cuisine and typical Austrian hospitality. Dishes served in traditional pans. Choice wines. Meat and cheese fondue. Menu changes daily. Children's menu. Hot food served from 11.30 am to 10 pm. Home-made strudel and Austrian desserts. Sun terrace sheltered from the wind. Après- Ski!

Opening hours: daily from 11.30 a.m - 10:00 p.m.

Phone: +43 5583 356038

Internet: www.gotthard.at/de/hotel-lech-arlberg-gotthard/dinner-lecher-stube.php

Email: lecher.stube@aon.at

Lechtaler Stuben, Burg Hotel

The no. 1 meeting place on the Arlberg. In our restaurants and bars you will enjoy the high life during the day and have a great time at night. Hot food served from 11.30 am to 5 pm and from 6.30 pm to 9 pm. In the evening fine Austrian and international cuisine as well as different set menus. Member of "Club de la Sommellerie". Inventive, cosy fondue restaurant!

Address: Oberlech 266, 6764 Lech am Arlberg

Phone: +43 5583 2291

Internet:

www.burghotel-lech.com/en/culinary/lechtaler-stube.aspx

Email: info@burghotel-lech.com

Martinsstüberl, Hotel Tannbergerhof

Gastronomy all around the clock. Known for our excellent cuisine and nostalgic flair, our rusticstyle restaurant "Martinstüberl" has become one of the most popular addresses in Lech. At lunchtime and in the afternoon we serve traditional specialities such as Tiroler Gröstel, "Käsknöpfle" and numerous other warm and cold platters, pasta, homemade pastry and cakes. In the evening international and local specialities in a cosy and dignified atmosphere. Please reserve your table in advance.

Address: Dorf 111, 6764 Lech am Arlberg

Phone: +43 5583 2202

Internet: www.tannbergerhof.at/martin-stueberl.html

Email: info@tannbergerhof.com

Mohnenfluh, Hotel-Restaurant

The restaurant right on the piste with large sun terrace, chill-out lounge and ice bar. Light, modern cuisine from 11.30 am - 5.30 pm and gourmet evening menus from 7.00 pm - 9.00 pm. Can also be reached by car and the local bus.

Address: Oberlech 507, 6764 Lech am Arlberg

Phone: +43 5583 33110

Internet: www.mohnenfluh.com/

Email: info@mohnenfluh.com

Montana, Hotel „Zur Kanne“

Meeting-point for gourmets on the sun terrace; lunch-time: small dishes, salad compositions, seafood, local specialities; dinner: Alsatian specialities and fondues. Tuesday and Thursday large buffet. We indulge you from 11.30 am to 10 pm. „Chaîne des Rotisseurs“

Address: Oberlech 279, 6764 Lech am Arlberg

Opening hours: Daily from 11.30 a.m. - 10 p.m.

Phone: +43 5583 2460

Internet: www.montanaoberlech.at/en/4-star-superior-deluxe-hotel-in-lech-oberlech-am-arlberg-austria.html

Email: hotel@montanaoberlech.at

Murmeli Sporthotel

Fine Austrian, regional and international cuisine, nice sun terrace, à la carte lunch daily from 12 noon to 2.00 pm, in the evening we serve an excellent menu, reservations recommended.

Address: Oberlech 297, 6764 Lech am Arlberg

Phone: +43 5583 2467

Internet: www.murmeli.at/en/

Email: hotel@murmeli.at

Olympia, Cafe-Restaurant

Pizza - Pasta & Co. The "Olympia" is centrally

located next to the lift station Lech-Oberlech. Visit our cosy café-restaurant or our sun terrasse and enjoy coffee, cakes or typically italien specialties from our kitchen and cellar.

Phone: +43 5583 23115

Internet: www.hotelolympia.at/28-1-Cafe-Olympia.html

Email: olympia@hotelolympia.at

Omesberg, Gasthof

Day and evening restaurant with Austrian and international cuisine, afternoon menu, sun terrace. By prior arrangement: Fondue; Car parking, warm dishes till 9 pm.

Phone: +43 5583 2212

Internet: www.hotel-omesberg.at/english/hotel-omesberg/restaurant-bar.html

Email: bucher@omesberg.lech.at

Panoramarestaurant am Rüfikopf

Breathtaking panoramic view of the mountain scenery at an altitude of 2.350 m, large sun terrace, tile stove. Traditional dishes, Austrian specialties. Events may also be held here in the evening. We turn any event into an unforgettable festivity

Phone: +43 5583 2336278

Petersboden, Hotel

In the heart of Oberlech, right on the piste! Excellent food and drink, fast and friendly service is our top priority. We have a great selection on offer for skiers, gourmets, vegetarians, fussy eaters, teenagers, children, fans of Kaiserschmarrn and Strudel, wine experts and fans of good coffee. We are smoke free in the hotel and in the restaurant with open fire, as well as in the Stüberln (small rooms) - open from 11.00 am to 9.00 pm, smoking is permitted at our umbrella bar - open from 10.00 am to 6.00 pm. From 3.00 pm, cocktail show and

après ski with Lukas and his team. You will love it! Reservations recommended.

Umbrella bar: 10 a.m. - 6 p.m.

Opening hours: Restaurant: 11 a.m. - 9 p.m. Umbrella bar: 10 a.m. - 6 p.m.

Internet: www.petersboden.com/en/startseite/sporthotel-petersboden/index.htm

Email: hotel@petersboden.com

Plattenhof, Hotel

At lunchtime Austrian cuisine is served until 1.30 p.m. In the afternoon hot snacks, coffee and cakes are available on our peaceful sun terrace that can be reached via the Hinterwies lift on skis. In the evening we serve fondue and selected national and international specialties if booked in advance.

Address: Tannberg 293,6764 Lech

Phone: +43 5583 2522

Internet: www.plattenhof.com/en/hotel-lech-am-arlberg/hotel-restaurant-lech-plattenhof.html

Email: hotel@plattenhof.com

Post, Hotel Gasthof

The cuisine is based on regional flavours with the all the best products used in the splendidly inspired order of the courses. Perfect harmony and seasonality form the foundation upon which innovative and delicious taste creations are built.

Address: Dorf 11 6764 Lech am Arlberg

Opening hours: Daily from 7 p.m. - 9 p.m.

Phone: +43 5583 22060

Internet: www.postlech.com/en-us/enjoying/therestaurants/thepoststuben.aspx

Email: info@postlech.com

Restaurant Pfeffermühle in Pfefferkorn's Hotel

Awarded Restaurant + café with an open fireplace, modern-traditional Austrian cuisine with an international touch and exquisite wines from our own wine bar in an extremely cosy

atmosphere; enjoy fresh cakes and pastries every day from our own patisserie; Sun terrace with panoramic view in the centre of the village, away from it all.

Address: Dorf 138, 6764 Lech am Arlberg

Phone: +43 5583 2525407

Internet: www.pfefferkorns.net/

Email: info@pfefferkorns.net

Rote Wand, Gasthof

A pleasure every time - if you want to enjoy Lech, you should go to Zug. In the Gasthof Rote Wand one really dines exquisitely. The menu of this traditional hotel includes fondues à la Rote Wand as well as delights (16 Gault Millau points) that are highly praised by gourmet circles. 2 touque cuisine with seasonal delicacies from the woodland, water and meadow.

Address: Zug 5, 6764 Lech am Arlberg

Opening hours: 6 p.m. - 9 p.m. | Closed on Sundays

Phone: +43 5583 3435

Internet: www.rotewand.com/en/wining-dining/hotel-restaurant-sommer.html

Email: gasthof@rotewand.com

Rud-Alpe

The "original" hut right on the Schlegelkopf above Lech, with beautiful views of the surrounding snowcovered mountains.

We offer traditional Austrian hospitality, from lunch on the terrace to a romantic candle-light dinner in the cosy, old wooden rooms. Come and enjoy our hearty snacks, delicate cakes and the best of Austrian cuisine. We look forward to seeing you!

Address: Tannberg 185, 6764 Lech am Arlberg

Phone: +43 5583 418250

Internet: rud-alpe@skiarlberg.at

Email: www.rud-alpe.at/

S'Pfefferkörndl

Insider restaurant + bar from 11 am - 2 am. Coffee specialities, exquisite wines, the best drinks and cocktails and plenty of fun, 4 different types of beer on tap, trendy international menu with pasta - wok - lava stone and much more, PIZZA till 1 am, après-ski meeting place at the ice bar in the middle of Lech.

Phone: +43 5583 2525429

Internet: www.pfefferkorns.net/en/cafe-lech/

Email: info@pfefferkorns.net

Salome Self Service Restaurant

Directly situated at the slopes of the Lech-Zürs ski area, the self-service restaurant Salome not only offers delicate provisions for your daily ski trip, but, from its perfect location, also provides an amazing 360 degree panoramic view of the Arlberg mountain world.

Address: Oberlech 49, 6764 Lech am Arlberg

Opening hours: daily from 10 a.m. - 5 p.m.

Phone: +43 5583 2306

Internet: www.hotel-salome.at/de/hotel-salome/restaurant-und-sb-restaurant.aspx

Email: lech@hotel-salome.at

Schualhus, Rote Wand

Chef's Table

Regional delicacies can be enjoyed in the Rote Wand Schualhus. These can be experienced by dropping into very special Jausestuba or by dining at the highest level, at the Chef's Table in Kuchiklub. Monday - Saturday from 7.30 pm (advance reservation)

Jausestuba: Monday - Sunday 10 am - 6 pm.

Address: Zug 5, 6764 Lech am Arlberg

Opening hours: Jausestuba: Mon - Sun 10 am - 6 pm,

Kuchiklub Mon - Sat from 7.30 pm

Phone: +43 5583 3435

Internet:

www.rotewand.com/en/wining-dining/schualhus.html

Email: gasthof@rotewand.com

Schröfli Alm

Close to the valley station of the Seekopf cable car, this cosy, welcoming listed establishment is over 400 years old. Traditional Austrian cooking. Closed Saturday.

Address: Zürs 74 6763 Zürs
Opening hours: Closed on Saturdays
Phone: +43 5583 3345
Internet: www.schroeflialm.at/
Email: schroefli.alm@iplace.at

Seekopf Restaurant

Top station Seekopf lift / Zürsersee lift; with table service! Home-style cooking, hearty Austrian specialities, snacks.

Address: Zürs am Arlberg
Phone: +43 5583 2283230
Internet: www.ski-zuers.at/restaurant
Email: restaurant.seekopf@ski-zuers.at

Skihütte Schneggarei

Uncomplicated is the slogan for enjoyment, too. For a relaxing break right next to the slope at lunchtime, a small après-ski refreshment or a cosy supper by the crackling fireplace. Our chefs prepare crispy pizzas from the original wood stove (unique in Lech and Zürs). Kids' meals as well as favourite classics from Austrian and international cuisines. And in the evening enjoy a few drinks at our bar. That's how nice holidays can be. Top-Resort Award: Best Restaurant 2006. Open from 12 noon until 1 am.

Address: Tannberg 629, 6764 Lech am Arlberg
Opening hours: Daily from 12 a.m. - 1 a.m.
Phone: +43 5583 39888
Internet: www.schneggarei.at/
Email: info@schneggarei.com

Sonnenburg, Hotel

The stronghold of hospitality. A meeting place for connoisseurs. At lunch time: delicious morsels and pasta dishes. Wonderful sweet or

savoury crêpes in the "Crêperie"! In the evening: sophisticated dining and drinking in the restaurant or in the famous "Schüna" (barn). Member of the "Chaîne des Rotisseurs" and the fraternity "La Confrérie des Chevaliers du Tastevin".

Address: Oberlech 55, 6764 Lech am Arlberg
Phone: +43 5583 2147
Internet: www.sonnenburg.at/culinary-hotel-arlberg.html
Email: hotel@sonnenburg.at

Stülzis, Hotel Café

Address: Omesberg 312, 6764 Lech
Phone: +43 5583 2471
Internet: www.stuelzis.com/en/home/
Email: hotel@stuelzis.com

Thurnhers Alpenhof

For years this has been known as one of the best restaurants in Austria with light international and Austrian cuisine. Excellent service in a wonderful environment with a breathtaking view of the mountains.

Address: Zürs 295, 6763 Zürs
Opening hours: Daily from 12 a.m. - 2 p.m. and from 7.30 p.m. - 9.30 p.m.
Phone: +43 5583 2191
Internet: www.thurnhers.com/en/hotel-alpenhof-zuers-arlberg/restaurant-bar/
Email: mail@thurnhers-alpenhof.com

Thurnher's Milchbar

The Lifestyle-Cafe at the Arlberg, right by the Zürserseelift. A trendy atmosphere, modern but comfortable with lounge music serving coffee specialities, milchshakes, speciality bread and many other delicious things.

Opening hours: Daily from 8 a.m. - 8 p.m.
Phone: +43 5583 419708
Internet: www.thurnhers.com/en/milchbar/
Email: mail@thurnhers-alpenhof.com

Trittalpe

Located at the Hexenboden; home-style cooking, hearty Austrian cuisine and specialities. The sun terrace of Zürs, meeting point of pleasantness.

New: big snow bar with DJ.

Phone: +43 5583 2831

Toni's Einkehr

Fondue specialities, home cooking, Austrian specialities.

Opening hours: 11.30 a.m. - 6 p.m. and from 7.30 p.m.

Phone: +43 5583 224347

Internet: www.flexen.com/en/index.htm

Email: hotel@flexen.com

ULLR

Right in the heart of Zürs is the ULLR with its shabby chic look: home cooking and new creations using regional produce, through to vegan cuisine. Off with lederhosen and dusty guest rooms and in with casual chic. Cool meets old world.

Bar fly meets aficionado. Noisy meets quiet. Fashionable meets trashy. Star meets starlet. Dolce vita meets laissez-faire. Unusual meets unique - in the ULLR.

Address: Zürs 110, 6763 Zürs

Phone: +43 6769262443

Internet: www.ullr.at

Email: gasthouse@ullr.at

Walserstube, Hotel Arlberghaus

The best pizza for miles around: on the first floor of our restaurant, enjoy good Austrian cuisine or our famous fantastic pizza. Friendly service and an interesting wine list complete the experience.

Address: Zürs 126, 6763 Zürs

Phone: +43 5583 2258504

Internet: www.arlberghaus.com/en/restaurant-pizzeria-walserstube-lech-zuers.html

Email: skihotel@arlberghaus.com

Zürserhof

International Cuisine, Austrian Cuisine

Address: Zürs 75 6763 Zürs

Phone: +43 5583 2513

Internet: www.zuerserhof.at/de/kulinarik

Email: hotel@zuerserhof.at

CAFES



Lech Zuers Tourismus by Hans Wiesenhofer

Lech Zürs is the perfect place to enjoy a hot chocolate and a apple strudel in the slopes or maybe something nice to drink downtown.

Allerlei – Krämerei + Genussraum

Our dairy with its tasting room in Zug provides you with enticing culinary and decorative gifts, presents and daily provisions (local supplier). Enjoy a coffee and cake, as well as tasty snacks and our house speciality "Flammkuchen" (tarte flambée). SCHIWAGO - the Arlberg wine, available from us. Visit us and spoil yourself, while enjoying the wonderful view over the Madloch.

Address: Zug 503 6764 Lech am Arlberg

Opening hours: Open from 8.30 am to 6 pm.

Phone: +43 664 5398274

Internet: www.staefeli.at/en/allerlei.html

Email: info@staefeli.at

Backstube Lech

The small café-confectionery with the special sophistication of typical Lech hospitality. Cakes -

strudels – petit fours – gift items. Wholemeal bread and delicious pastries. Breakfast buffet until noon. Exquisite snacks. Sun terrace – wood burning stove. We spoil you daily from 7.45 am until 6 pm.

Address: Omesberg 352, 6764 Lech am Arlberg
Opening hours: daily 7.45 a.m. – 6 p.m.
Phone: +43 5583 226344
Internet: www.backstubelech.at/
Email: martin.walch@backstubelech.at

Backstüble

Our small stand-up café is perfect for that little snack in between meals, for a scrumptious breakfast or for a quick coffee. Bread made from natural ingredients – fine pastries – strudels – takeaways.

Address: Dorf 199, 6764 Lech am Arlberg
Opening hours: 7 a.m. – 12.30 p.m. & 2.30 p.m. – 5 p.m.
Phone: +43 5583 30847
Internet: martin.walch@backstubelech.at
Email: martin.walch@backstubelech.at

Backstube Zürs

In the centre of Zürs you can purchase fresh bread, delicious pastries and fresh croissants in our new bakeshop im Posthaus, or treat yourself to a delicious breakfast or some sweet delicacies. We also offer cold and warm snacks for those in between-meal cravings.

Opening hours: Daily from 7.30 a.m. – 4.30 p.m.
Phone: +43 5583 2263825
Internet: www.backstubelech.at/
Email: martin.walch@backstubelech.at

Baristro

We would love to welcome you to our new Cafe, Bar, Bistro; in the heart of Lech. We offer: Coffee to Go, Smoothies and Greenies to Go, Cocktails, etc. In the morning: Breakfast, brunch; afternoons: tappas, salads and soups.

Address: Ambrosiuspassage, Lech am Arlberg
Opening hours: Mon – Sun 8.00 am – 9.00 pm
Phone: +43 664 1234 567
Internet: www.baristro.at
Email: hello@baristro.at

Café Fritz

Traditional Austrian à la carte cuisine. Fondue and Raclette with advance order. Large sun terrace and own patisserie. Hot food: lunch menu from 11.00 am to 3.00 pm, afternoon menu from 3.00 pm to 6.00 pm, evening menu from 6.00 pm to 9.30 pm. Enjoy your cigarette in the comfortable "Fassstube". Closed on Wednesdays! (except Christmas, New Year's Day and in the Easter week).

Address: Anger 369, 6764 Lech am Arlberg
Opening hours: 11 a.m. – 9.30 p.m. Closed on Wednesdays
Phone: +43 5583 2650
Internet: www.cafe-fritz.at/tcms/cms/deutsch/cat_2/cId_2
Email: kontakt@cafe-fritz.at

Klösterle

"Klösterle – food and drink in a historic building". Fondue and austrian specialities in a Walser house preserved in its original style in Zug. The classic fondue rest aurant. Open from 2.00 to 5.30 pm, from 7.00 pm on reservation. Closed Tuesday.

6764 Lech am Arlberg
+43 (0)5583 3190
kloesterle@almhof.at
www.almhof.at/#/en/home

Opening hours: Open from 2.00 to 5.30 pm, from 7.00 pm on reservation. Closed Tuesday.
Phone: +43 5583 3190
Internet: www.almhof.at/#/en/home
Email: kloesterle@almhof.at

Gasthof Post, Kutscherstube

Opening times 10 am to 10 pm. We serve Austrian culinary delicacies in our "inn". Beef

carpaccio in horseradish and chive sauce with root vegetables and pumpkin seed oil, suckling calf Wiener schnitzel with parsley potatoes, Kaiserschmarren (shredded pancakes) with stewed plums, and also a wide selection of wines by the glass.

Address: Dorf 11 6764 Lech am Arlberg
Opening hours: 10 a.m. - 1 p.m.
Phone: +43 5583 22060
Internet: www.postlech.com/en-us/enjoying/therestaurants/thepoststuben.aspx
Email: info@postlech.com

Thurnher's Milchbar

The Lifestyle-Cafe at the Arlberg, right by the Zürserseelift. A trendy atmosphere, modern but comfortable with lounge music serving coffee specialities, milchshakes, speciality bread and many other delicious things.

Address: Zürs am Arlberg
Opening hours: Daily from 8 a.m. - 8 p.m.
Phone: +43 5583 419708
Internet: www.thurnhers.com/en/milchbar
Email: mail@thurnhers-alpenhof.com

BARS & NIGHTLIFE



LechZuersTourismus

There is a big variety of sports shops, souvenir and fashion shops in Lech Zürs am Arlberg.

Schirmbar Petersboden

Daniela, Stefan and Nora care for your every need: craft coffee made on a La Marzocco,

cocktails, cool sounds, fabulous food choices from our restaurant, hot chocolate with milk with milk from farmers from Lech, mulled wine, draft beer and more. Ski in and chill out.

Free WiFi
non-smoking bar

Address: Oberlech 278, 6764 Lech am Arlberg
Opening hours: 10 a.m. - 6 p.m.
Phone: +43 5583 3232
Internet: www.petersboden.com

Tannberger Bar

Right in front of Hotel Tannbergerhof, at the very center of Lech, the best open air party at the legendary ice bar awaits the guests of Lech each day - one of the après-ski locations in Lech.

Address: Dorf 111, 6764 Lech am Arlberg
Opening hours: daily from 11.30 a.m.
Phone: +43 5583 2202

Archivbar

Right in the centre of Lech by the Rüfibahn, in the Rüfipassage is where the party's on until the morning light. Archivbar still is a place where everyone's welcome and where the best party in Lech is guaranteed.

Address: Rüfipassage 229, 6764 Lech am Arlberg
Opening hours: open daily from 9 p.m.
Phone: +43 5583 419300

Krone Bar

The Romantic Hotel Krone's Après ski motto is 'quality not quantity' and that is apparent when entering the Sun Terrace which is home to the stylish Après ski Ice Bar hosted by the Lech hotel. Enjoy exquisite rosé champagne, a fine cigar or a warming cognac in the beautiful and traditional surroundings. Watch skiers finish the last runs of the day right in the heart of Lech.

Address: Dorf 13, 6764 Lech am Arlberg

Phone: +43 5583 2551

Internet: www.romantikhotelkrone-lech.at/en

K.CLUB

Dance the Night away: K.Club, Popular & Stylish Clubbing Address in Lech at the Arlberg
Lech is not your standard ski resort. Instead of Alpine chalets you will find gourmet restaurants scattered all round the stylish Austrian ski resort. Music and entertainment can be found aplenty. And once the night life awakes, it's time to head to the K.club, the most exclusive clubbing address in Lech, for an evening of dancing, music and socialising. The K.club is found at the Romantic Hotel Krone, your five star hotel, which is located in the heart of Lech and is well-known as an exclusive night-time spot in Lech.

Address: Dorf 13, 6764 Lech am Arlberg

Opening hours: open daily from 10 p.m.

Phone: +43 5583 2551

The Blaue Bar

The Blaue Bar (blue bar) is one year old but it seems like a scenery from a beautiful old classic film. The Blaue Bar is a truly stylish bar. Here honest craft still counts.

Address: Omesberg 370, 6764 Lech am Arlberg

Opening hours: open daily until 1 a.m., Tuesday closing day

Phone: +43 5583 37500

Internet: www.schmelzhof.at

Pepper's Lounge

It basically is the succesful big-city combination yet at the Arlberg: restaurant, bar, shisha lunge - with cool drinks, classic and exciting cocktail creations, selected wines and delicious cuisine from the far East.

Address: Dorf 138, 6764 Lech am Arlberg

Opening hours: Tue - Sun: 6 p.m. - 2 a.m.

Phone: +43 5583 25250

Internet: www.pfefferkorns.net

The Cottage

At the heart of Lech, traditionsteeped Tannbergerhof welcomes guests with stylish ambience and alpine charm. Just one floor below you'll find yourself transpoted to Ireland. The new meeting place in Lech is called The Cottage and presents itself with great mood, a comfy atmosphere and authentic Irish Pub flair.

Address: Dorf 111, 6764 Lech am Arlberg

Opening hours: Tue - Sun: 5 p.m. - 3 a.m.

Phone: +43 5583 2202

Internet: www.tannbergerhof.at

Vernissage

The Vernissage, which was opened by Micky Schönhofner in 1991, dominated the Arlberg's nightlife for the pasdt 20 years. Be it staff or monarch, all kinds of nightflies have gathered here night after night.

Address: Haus 82, 6763 Zürs am Arlberg

Opening hours: open daily from 9 p.m.

Phone: +43 676 7880287

Internet: www.bar-vernissage.at

Skihütte Schneggarei

At night you're welcome to come and have a few drinks at the bar.

Address: Tannberg 629, 6764 Lech am Arlberg

Phone: +43 5583 39888

Internet: www.schneggarei.at

Zürserl

The zürserl at hotel Edelweiss is an institution in Arlberg nightlife. And this is going to change anytime soon. Because that kind of hotspots - and especially legendary ones - are not found at every corner, even around the Arlberg.

Address: Zürs 79, 6763 Zürs am Arlberg

Opening hours: Tue - Sun: 10 p.m. - 3 a.m.

Phone: +43 5583 2662
Internet: www.zuerserl.net

SHOPPING



LechZuersTourismus

Allerlei – Krämerei + Genusraum

gifts, accessoires, groceries, newspapers and tobacco products

Address: Zug 525, 6764 Lech am Arlberg
Opening hours: 8.30 a.m. - 6 p.m.
Phone: +43 664 5398274
Internet: www.staefeli.at/en/grocery-store.html

Annemaries Bluenstube

Flowers, gifts, souvenirs

Address: Hnr. 268, 6764 Lech am Arlberg
Phone: +43 5583 2401

B.ART

gifts, accessoires

Address: Omesberg 541, 6764 Lech am Arlberg
Opening hours: 12 a.m. - 4 p.m.
Phone: +43 664 1229923

Blumen Kopf

flowers

Address: Dorf 11, 6764 Lech am Arlberg
Opening hours: Mon - Fri: 9.30 a.m. - 12.30 a.m. & 2 p.m. - 5.30 p.m., Sat: 9.30 a.m. - 7 p.m., Sun: 3 p.m. - 7 p.m.
Phone: +43 5583 41852

Boutique and Juwelenstub'

gifts, accessoires

Address: Tannberg 187, 6764 Lech am Arlberg
Opening hours: 9.30 a.m. - 6.30 p.m.
Phone: +43 5583 21340
Internet: www.arlberghotel.at/en/service/boutique/

Boutique Little Dream

books, gifts and accessoires

Address: Zürs 295, 6763 Zürs am Arlberg
Opening hours: 8 a.m. - 10 p.m.
Phone: +43 5583 2191

Juwelier Bretterbauer

Jewellery, watches

Address: Tannberg 409 6764 Lech
Opening hours: 10 a.m. - 7 p.m.
Phone: +43 5583 41977

C.r.a.f.t

Opening hours: Monday to Saturday 10.00 a.m. - 7.30 p.m.,
Sunday 2 p.m. - 7.30 p.m.
Phone: +43 5583 30827

Erika's Shop

groceries, gifts, accessoires, drugstore, fashion, ethnic fashion, tobacco products, newspaers

Address: Zürs 126, 6763 Zürs
Opening hours: Mon - Sat: 8.30 a.m. - 12.30 a.m. & 2.30 p.m. - 6 p.m., Sun: 8.30 a.m. - 10.30 a.m. & 3 p.m. - 5 p.m.
Phone: +43 5583 2258 507

Feinpostladen

gifts, accessoires

Address: Dorf 11, 6764 Lech am Arlberg
Opening hours: on request
Phone: +43 5583 2206
Internet: www.postlech.com/index.php?lang=en

Friendly Brändle Ski-Shop-Rent

Address: Zürs 437,6763 Zürs am Arlberg
Phone: +43 5583 3079
Internet: www.sportbraendle.at

Friendly Brändle Ski Sport Mode fashion, ethnic fashion, sportswear

Address: Zürs 493, 6763 Zürs am Arlberg
Opening hours: Mon - Sat: 9 a.m. - 1 p.m. & 3 p.m. - 7 p.m.,
Sun 9 a.m. - 11 a.m. & 3 p.m. - 6.30 p.m.
Phone: +43 5583 2660

Friendly Brändle Ski Sport Mode sportswear

Address: Oberlech 266, 6764 Lech am Arlberg
Opening hours: 9 a.m. - 12.30 p.m. & 2.30 p.m. - 6 p.m.
Phone: +43 5583 2291720

Genuss-Art Plangger wine, food, souvenirs

Address: Haus Nr.: 196, 6764 Lech am Arlberg
Phone: +43 664 48 49 606

Hagen's Dorfmetzgerei groceries

Address: Dorf 134, 6764 Lech am Arlberg
Opening hours: Mon - Sat: 8 a.m. - 7 p.m.
Phone: +43 5583 2303

Huber Uhren Schmuck

Address: Dorf 115, 6764 Lech am Arlberg
Opening hours: Mon - Sat: 9.30 a.m. - 12.30 a.m., 2 p.m. - 7
p.m. Sun: 3 p.m. - 7 p.m.
Phone: +43 5583 3737

Konrad's Wood Carving gifts and accessoires

Address: Filomenapassage, Lech am Arlberg

Opening hours: Mon - Fri: 9 a.m. - 6 p.m., Sat: 9 a.m. - 12
a.m.
Phone: +43 664 4353675

HYPO Bank Lech

Address: Dorf 138, 6764 Lech am Arlberg
Opening hours: 8 - 12 a.m. & 2.30 p.m. - 5.30 p.m.
Phone: +43 50 414 3875

Lenai & Linai gifts, accessoires, fashion and ethnic fashion

Address: Dorf 163, 6764 Lech am Arlberg
Opening hours: Mon - Sat: 10 a.m. - 1 p.m. & 3 p.m. - 7 p.m.
Sun: 3 p.m. - 7 p.m.
Phone: +43 5583 40080
Internet: www.lenai-linai.at/

Palmers Fahion

Address: Filomenapassage, Lech am Arlberg
Opening hours: 9 a.m. - 6.30 p.m.
Phone: +43 664 6114280

Peppino - Kids Boutique

Address: Dorf 329, 6764 Lech am Arlberg
Opening hours: Mon - Sat: 9 a.m. - 12.30 p.m. & 2.30 p.m. -
6.30 p.m., Sun: 4 p.m. - 6.30 p.m.
Phone: +43 5583 40087
Internet: [www.sporthaus-pfefferkorns.net/en/peppino-kids-bo
utique.html](http://www.sporthaus-pfefferkorns.net/en/peppino-kids-boutique.html)

Pfefferkorn's Geschenkeboutique gifts, accessoires, tobacco products and newspapers

Address: Dorf 138, 6764 Lech am Arlberg
Opening hours: Mon - Sat: 8.30 a.m. - 7 p.m., Sun 2 p.m. - 7
p.m.
Phone: +43 5583 2525417

Pfefferkorn's Parfümerie
drugstore

Address: Dorf 138, 6764 Lech am Arlberg
Opening hours: Mon - Sat: 8.30 a.m. - 7 p.m., Sun: 2 p.m. - 7 p.m.
Phone: +43 5583 2525 417

Pfefferkorn's supermarket
supermarket, groceries

Address: Dorf 138, 6764 Lech am Arlberg
Opening hours: Mon - Sat: 8.30 a.m. - 7 p.m., Sun: 2 p.m. - 7 p.m.
Phone: +43 5583 2525 415

Raum & Einrichtung
gifts, accessoires

Address: Omesberg 461, 6764 Lech am Arlberg
Opening hours: Mon - Fri: 3 p.m. - 5 p.m.
Phone: +43 5583 35200

Raiffeisenbank Lech

Address: Dorf 90, 6764 Lech
Opening hours: Mon - Fri: 8.30 a.m. - 12 a.m. & 2.30 p.m. - 5.30 p.m.
Phone: +43 5583 2626
Internet: www.lechbank.com

Sagmeister Boutique - Der Mann

Address: Tannberg 228, 6764 Lech am Arlberg
Opening hours: Mon - Sat: 9.30 a.m. - 12.30 a.m., 2.30 p.m. - 7 p.m., Sun: 3 p.m. - 7 p.m.
Phone: +43 5583 40022

Sagmeister Boutique - Die Frau und Der Mann

Address: Dorf 11, 6764 Lech am Arlberg
Opening hours: Mon - Sat: 9.30 a.m. - 1 p.m., 2.30 p.m. - 7 p.m., Sun: 3 p.m. - 7 p.m.
Phone: +43 5583 22060

Sagmeister Trend - Die Frau

Address: Dorf 11, 6764 Lech am Arlberg
Opening hours: Mon - Sat: 9.30 a.m. - 1 p.m. & 2.30 p.m. - 7 p.m., Sun: 3.00 p.m. - 7 p.m.
Phone: +43 5583 41833

Sagmeister Style - Die Frau

Address: Dorf 12, 6764 Lech am Arlberg
Opening hours: Mon - Sat: 9.30 a.m. - 1 p.m. & 2.30 p.m. - 7 p.m., Sun: 3.00 p.m. - 7 p.m.
Phone: +43 5583 40053

Skibex
sports articles

Address: Dorf 487, Lech am Arlberg
Opening hours: 8.30 a.m. - 6 p.m.
Phone: +43 5583 297070

Ski Suit Rental
sportswear

Opening hours: on request
Phone: +43 699 11262626
Internet: www.skisuitrental.com

SPAR supermarket
supermarket, groceries, tobacco, newspapers
and flowers

Address: Omesberg 211, 6764 Lech am Arlberg
Opening hours: Mon - Sat: 7.30 a.m. - 7 p.m., Sun: 2 p.m. - 6 p.m.
Phone: +43 5583 2557

Sparkasse Lech

Address: HNr. 352 6764 Lech
Opening hours: Mon - Fri.: 8.30 a.m. - 12 a.m. & 2 p.m. - 4 p.m.
Phone: +43 50 100 77 802

Speckstube

groceries

Address: Omesberg 8, 6764 Lech am Arlberg
Opening hours: Mon- Thu: 9 a.m. - 6 p.m., Fri: 9 a.m. - 7 p.m.,
Sat&Sun: 9 a.m. - 5 p.m.
Phone: +43 5583 2730

Sportalp Waldhart

sportswear, sports article, fashion, ethnic fashion

Address: Tannberg 409, 6764 Lech am Arlberg
Opening hours: 8.30 a.m. - 7.30 p.m.
Phone: +43 5583 2110
Internet: www.sportalp.at
Email: waldhart@sportalp.at

Sporthaus Strolz

fashion, ethnic fashion, sports articles,
sportswear, tobacco products, newspapers, gifts
,accessoires

Address: Lech am Arlberg
Opening hours: Mon - Sat 08.45 a.m. - 12.30 a.m. & 2
p.m.-6.30 p.m. Sun 3 p.m. - 6.30 p.m.
Phone: +43 5583 2361
Internet: www.strolz.at/en/sport-mode
Email: office@strolz.at

Sporthaus Pfefferkorn's

Address: Dorf 180, 6764 Lech am Arlberg
Opening hours: Mon - Sat: 8.30 a.m. - 6 p.m., Sun: 8.30 a.m. -
12 a.m. & 4 p.m. - 6.30 p.m.
Phone: +43 5583 2224
Internet: www.sporthaus-pfefferkorns.net/en/sportshop-pfefferkorns-in-lech.html

Sporthaus Zürs

Strolz Sports Store Zürs: Shop, Rent a Ski and
Ski servicing

Located opposite the Alpenrose club, between
the Hotel Arlberghaus and the Hotel Hirlanda.

sportswear, sports article, gifts, accessoires

Address: Zürs 205, 6763 Zürs am Arlberg
Opening hours: 8.30 a.m. - 6 p.m.
Phone: +43 5583 3555
Internet: www.strolz.at/en

Stilvoll Walch

Address: Zug 503, 6764 Lech am Arlberg
Opening hours: 8 a.m. - 6 p.m.
Phone: +43 664 5398274

Strolz - Filomena

Lech-Filomena: Ski- and Cross-country ski hire,
servicing and lockers

Located below the Filomena Spar supermarket
(downstairs) on the outskirts of Lech opposite
the Sparkasse bank and the Hotel Gotthard.

Address: Omesberg 211, 6764 Lech am Arlberg
Opening hours: 8.30 a.m. - 6.30 p.m.
Phone: +43 5583 2361 179
Internet: www.strolz.at/en
Email: office@strolz.at

Strolz - Rüfiplatz

Stuff in Lech: Snowboard- and Freerideshop,
Rent a Ski, Board servicing

Located next to the lower terminus of the
Rüfikopf cable car
on Rüfikopfplatz in the Ambrosius Passage.

Address: Rüfiplatz, 6764 Lech am Arlberg
Opening hours: 8.30 a.m. - 6 p.m.
Phone: +43 5583 2361 179
Internet: www.strolz.at/en
Email: office@strolz.at

Strolz - ski service

Lech centre: Rent a Ski, Servicing and lockers

Located opposite the Strolz sport & fashion store
and next to the Hotel Arlberg.

Opening hours: 8.30 a.m. - 6 p.m.

Phone: +43 5583 2361 21

Internet: www.strolz.at/en

Email: office@strolz.at

Swarovski Shop Lech

Address: Tannberg 228, 6764 Lech am Arlberg

Opening hours: Mon - Sat: 9.30 a.m. 12.30 a.m. , 3 p.m. - 6.30
p.m., Sun 2 p.m. - 6.30 p.m.

Phone: +43 5583 41807

Thurnher's Milchbar/Thurnher's Shop groceries, gifts, accessoires, milk shakes

Address: next to Zürserseelift

Opening hours: 11 a.m. - 7 p.m.

Phone: +43 5583 4197012

Internet: www.thurnhers.com/en/milchbar

Population

1,512

Currency

Euro (EUR) €1 = 100 cents

Internet

www.lechzuers.com

www.facebook.com/lechzuers

www.instagram.com/lechzuers

www.youtube.com/lztg

Emergency numbers

Emergency: 112

Police: 133

Medical: 144

Mountain Rescue: 140

Tourist information

www.lechzuers.com

info@lech-zuers.at

+43 5583 21610