



# Oahu, Hawaii

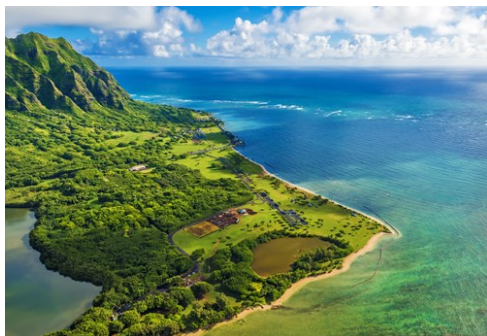
Photo: Maridav/shutterstock



Maridav/shutterstock



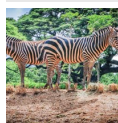
travellife18/shutterstock



Ppictures/shutterstock

Surrounded by the verdant mountains of dormant volcanoes and the roar of the Pacific beating down upon palm-fringed white beaches, the island Oahu is an incredibly idyllic holiday destination. With an abundance of natural beauty and the attractions of the vibrant and buzzing metropolis Honolulu, Oahu is sure to please all visitors: from beach bums to culture vultures.

## Featured



### Honolulu Zoo

The Honolulu Zoo is home to over 900 different animals from the tropics, inc...



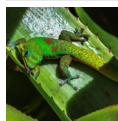
### Surfing

People from all over the world dream of catching waves on the shores of Hawa...



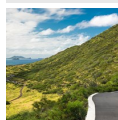
### Waikiki Aquarium

The Waikiki Aquarium, located right on the shores and run by the nearby univ...



### Foster Botanical Gardens

For peace and relaxation away from the bustle of tourist areas, head to the ...



### Kaiwi Shoreline Trail

This 1-mile hike at Kaiwi State Scenic Shoreline Park takes visitors over be...

## Top 5



### Honolulu

Hawaii's capital, its largest city and the center of commerce, history and e...



### Iolani Palace

'Iolani Palace is the only official royal residence in the United States. Th...



### Waikiki

The two-mile stretch of beach south of central Honolulu is the island's main...



### World War II Valor in the ...

The United States naval base at Pearl Harbor was surprised by a Japanese mil...



### Diamond Head State Monument

Hawaii's most famous landmark, the Diamond Head, is a volcanic

## THE ISLAND



Shane Myers Photography/shutterstock

While hula-clad dancers, sun-kissed beaches and killer surf shape Oahu's image, this island has all this and much more. The downtown district of Honolulu, the most populous city, features many of the island's finest landmarks, such as the Aloha Tower and the Iolani Palace, and it is also home to some of Honolulu's finest restaurants and cultural institutions.

Nearby, Chinatown is one of the most interesting and vibrant areas, where you will find beautiful temples, cutting-edge cultural and entertainment venues, a fine array of restaurants, as well as some Chinese herbal and medicinal shops that sell a range of cure-alls.

To the North of the city, Pearl Harbor reminds of the Japanese surprise attack that led to the American intervention in World War II. To the East, the famous suburb of Waikiki awaits with its beautiful beaches, pounding surf, resort hotels, bars, and restaurants. Manoa, Hawaii's university town, is a tranquil yet beautiful suburb tucked in between the mountains and towering above everything, while Diamond Head dominates the impressive skyline over all.

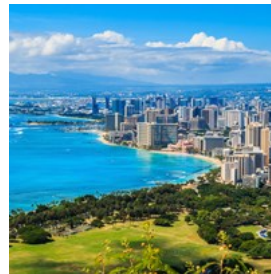
## DO & SEE



SvetlanaSF/shutterstock

The breathtaking island of Oahu offers an endless array of activities and sights. While relaxing on the beaches or braving the surf will always be Hawaiian specialties, culture and adventure should also be on the bucket-list: celebrate Polynesian culture at a luau, get a dose of modern culture in Honolulu or admire the mesmerizing natural reserve wildlife.

### Honolulu



Hawaii's capital, its largest city and the center of commerce, history and entertainment, is a true metropolis with

Polynesian flavor. Although visitors might prefer to laze on the beautiful beaches or to explore the natural wonders of the island, a visit to The Big Pineapple, as it is known, should not be passed up, as you do not want to miss the dining options, the student scene, the historical sights or the cultural delights.

Photo: Izabela23/shutterstock

Internet: [www.honolulu.gov](http://www.honolulu.gov)

### Iolani Palace



Iolani Palace is the only official royal residence in the United States. The last king of Hawaii was David Kalakaua, who ruled the kingdom in the late nineteenth century. Hawaii became an American territory in 1900 and, almost 60 years later, was declared the 50th American state.

Photo: Allen G/shutterstock

Address: 364 South King Street, Honolulu, Oahu, HI

Opening hours: Mon-Sat 9am-4pm

Phone: +1 808 586 0352

Internet: [www.iolanipalace.org](http://www.iolanipalace.org)

Email: [info@iolanipalace.org](mailto:info@iolanipalace.org)

### Waikiki



The two-mile stretch of beach south of central Honolulu is the island's main resort area and, thus, one of the biggest draws for tourists who flock here for laid-back vibes, gentle surf, dining, entertainment, nightlife and shopping. Lying in the shadow of the Diamond Head makes not only stunning views but also an easy access to one of Hawaii's most famous landmarks.

Photo: tomas del amo/shutterstock

Internet: [www.waikiki.com](http://www.waikiki.com)

Email: [info@waikiki.com](mailto:info@waikiki.com)

### World War II Valor in the Pacific National Monument



The United States naval base at Pearl Harbor was surprised by a Japanese military strike on the morning of December 7, 1941: all eight U.S. Navy

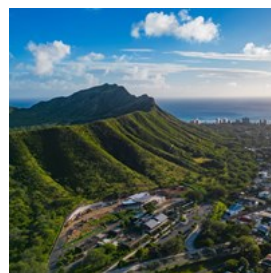
battleships were damaged, more than 2,000 Americans lost their lives, and this very attack led to the American involvement in World War II. Today, a memorial reminds of those who died in the assault, while two museums and outdoor exhibits present the historical happenings and their backgrounds. The visitor centre in general also features exhibits and interpretive programs for other Pacific National Parks: Kalaupapa National Historical Park on the island of Molokai, American Memorial Park in Saipan, and War in the Pacific National Historical Park in Guam.

Photo: pinggr/shutterstock

Address: 1 Arizona Memorial Place, Honolulu, Oahu, HI

Internet: [www.nps.gov/valr](http://www.nps.gov/valr)

### Diamond Head State Monument



Hawaii's most famous landmark, the Diamond Head, is a volcanic crater with a 360-degree view over the island, and its name comes from English sailors who thought its calcite crystals were pure diamonds. The scenic hike up to the summit, taking the so-called stairway to heaven, will not be soon forgotten, and so it happens to the views from atop.

Photo: Drone Northwest/shutterstock

Opening hours: Daily 6am-6pm

Phone: +1 808 587 0300

Internet: [dlnr.hawaii.gov/dsp/parks/oahu/diamond-head-state-monument](http://dlnr.hawaii.gov/dsp/parks/oahu/diamond-head-state-monument)

More Info: Last entrance to hike the trail is at 4:30pm.

### Waikiki Aquarium



The Waikiki Aquarium, located right on the shores and run by the nearby university, attempts to recreate diverse tropical Pacific reef habitats to function as home to a number of aquatic species, including some rare fish species from the Northwestern Hawaiian Islands and the moon jellyfish.

Photo: Png Studio Photography/shutterstock

Address: 2777 Kalakaua Avenue, Honolulu, Oahu, HI

Opening hours: Daily 9am-5pm

Phone: +1 808 923 9741

Internet: [www.waikikiaquarium.org](http://www.waikikiaquarium.org)

### Hanauma Bay Nature Preserve



Hanauma Bay is a marine nature reserve and one of Oahu's most iconic snorkeling destinations. Glide through its crystal-clear waters to encounter shimmering schools of silver fish, vibrant parrotfish, and even curious sea turtles that might swim right up to you. As a protected marine-life conservation district, the bay is a haven for biodiversity, but its popularity also poses a challenge. The delicate ecosystem faces ongoing threats from the very visitors who come to admire its beauty, making responsible tourism essential for its preservation.

Photo: I. Noyan Yilma/shutterstock

Address: 100 Hanauma Bay Road, Honolulu, Oahu, HI

Internet: [www.hanaumabaystatepark.com](http://www.hanaumabaystatepark.com)

### Polynesian Cultural Center



Sample a traditional Hawaiian luau feast and learn about Polynesian island culture at the Polynesian Cultural Center. The luau has been an opportunity for Hawaiians to celebrate the good things in life with friends and family for generations, so the bright and festive luau clothes turn any frown upside down.

Photo: Deborah Kolb/shutterstock

Address: 55-370 Kamehameha Highway, Honolulu, Oahu, HI

Phone: +1 800 367 7060

Internet: [www.polynesia.com](http://www.polynesia.com)

Email: [customercare@polynesia.com](mailto:customercare@polynesia.com)

### Surfing



People from all over the world dream of catching waves on the shores of Hawaii, and a trip to the islands would not be complete without this adventure. Once upon a time, surfing was a sport reserved for royalty, but today, thankfully just about anybody can take lessons and, thus, experience the thrill of the ocean up close — try out Hans Hedemann Surf School.

Photo: Maridav/shutterstock

Address: Hans Hedemann Surf School, 150 Kapahulu Avenue, Honolulu, Oahu, HI

Phone: +1 808 924 7778

Internet: [www.hhsurf.com](http://www.hhsurf.com)

Email: [info@hhsurf.com](mailto:info@hhsurf.com)

### Whale & Dolphin Watching



Experience the gracefulness and the beauty of aquatic mammals and sea turtles with this unique tour where you'll get a chance

to encounter dolphins, whales, and turtles. Wild Side Specialty Tours offers personal and high quality tours with many different options.

Photo: Maridav/shutterstock

Address: Wild Side Specialty Tours, 85-371 Farrington

Highway, Waianae, Oahu, HI

Opening hours: Daily 5am-8pm

Phone: +1 808 306 7273

Internet: [www.sailhawaii.com](http://www.sailhawaii.com)

Email: [reservations@sailhawaii.com](mailto:reservations@sailhawaii.com)

### Honolulu Zoo



The Honolulu Zoo is home to over 900 different animals from the tropics, including Komodo Dragons, orangutans, elephants,

primates, and a variety of African mammals. Distributed on 42 acres of tropical greenery, the aviary is especially charming, as visitors can here admire a variety of native Hawaiian birds, including the nene and 'apapane.

Photo: Mr Popz Photo/shutterstock

Address: 151 Kapahulu Avenue, Honolulu, Oahu, HI

Opening hours: Daily 10am-4pm

Phone: +1 808 926 3191

Internet: [www.honolulu zoo.org](http://www.honolulu zoo.org)

Email: [info@honzoosoc.org](mailto:info@honzoosoc.org)

### Byodo-In Temple



Ring the 5-foot and 3-ton brass bell for good luck, feed droves of eager carp, ducks and swans in the garden's pond, or just relax in the ambiance of

the Byodo-In Temple. However, make sure to visit the 2-ton carved wooden statue of the Buddha sitting placidly inside the replica Temple, hearkening 11th century Uji, Japan.

Photo: Shane Myers Photography/shutterstock

Address: Valley of the Temples Memorial Park, 47-200

Kahekili Highway, Kaneohe, Oahu, HI

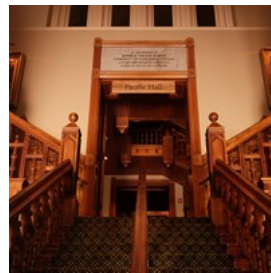
Opening hours: Daily 8:30am-4:30pm

Phone: +1 808 239 8811

Internet: [www.byodo-in.com](http://www.byodo-in.com)

Email: [byodo-in@nsmg.com](mailto:byodo-in@nsmg.com)

### Bishop Museum



The Bishop Museum provides excellent exhibits of Hawaiian and Polynesian culture, including Hawaiian artifacts and royal family

heirlooms. The museum was founded in 1889 in honor of the royal Kamehameha family and it is definitely one of the must sees when visiting Honolulu.

Photo: Suri Kwak/shutterstock

Address: 1525 Bernice Street, Honolulu, Oahu, HI

Opening hours: Daily 9am-5pm

Phone: +1 808 847 3511

Internet: [www.bishopmuseum.org](http://www.bishopmuseum.org)

Email: [communications@bishopmuseum.org](mailto:communications@bishopmuseum.org)

### Chinatown Cultural Plaza



The sprawling Cultural Plaza in Chinatown is a shopping square surrounding a courtyard that hosts an incense-enveloped shrine and the Moongate stage for holiday performances. Near the canal, you will meet local community members playing cards and mah-jong.

Photo: Toa55/shutterstock

Address: 100 North Beretania Street, Honolulu, Oahu, HI

Phone: +1 808 521 4934

Internet: [www.chinatownculturalplaza.com](http://www.chinatownculturalplaza.com)

### Dole Plantation



The days of pineapple plantations were pivotal for the economic success of Hawaii, and visitors are now given the chance to explore this rich history. At Dole Plantation, exhibits will tell you more about this far-reaching market, while a gift shop, a snack concession, educational displays and the world's largest maze will serve your entertainment.

Photo: Mariamichelle/pixabay

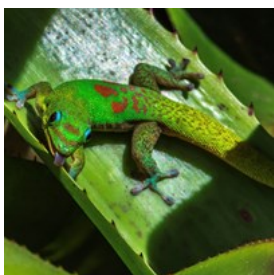
Address: 64-1550 Kamehameha Highway, Wahiawa, Oahu, HI

Opening hours: Daily 9:30am-5:30pm

Phone: +1 808 621 8408

Internet: [www.doleplantation.com](http://www.doleplantation.com)

### Foster Botanical Gardens



For peace and relaxation away from the bustle of tourist areas, head to the Foster Botanical Gardens and walk among a variety of placating bromeliads,

orchids and other tropical plants. Many of the trees are still in residence from 1853, when Queen Kalama leased a portion of her land.

Photo: Phillip B. Espinasse/shutterstock

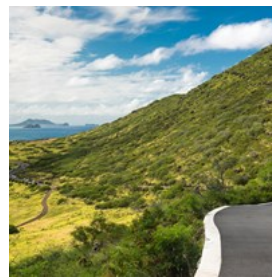
Address: 180 North Vineyard Boulevard, Honolulu, Oahu, HI

Opening hours: Daily 9am-4pm

Phone: +1 808 768 7135

Internet: [www.honolulu.gov/cms-dpr-menu/site-dpr-sitearticles/568-foster-botanical-garden.html](http://www.honolulu.gov/cms-dpr-menu/site-dpr-sitearticles/568-foster-botanical-garden.html)

### Kaiwi Shoreline Trail



This 1-mile hike at Kaiwi State Scenic Shoreline Park takes visitors over beautiful hills to the historic Makapu'u lighthouse, and it always provides places for having a break and for admiring the breathtaking scenery. During the winter months, it is possible to view humpback whales during their long migrations.

Photo: E. J. Johnson Photography/shutterstock

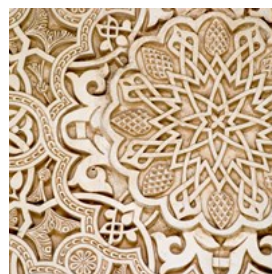
Address: Kaiwi State Scenic Shoreline Park, Honolulu, Oahu, HI

Opening hours: From April 1 to the first Monday of September: daily 7am-7:45pm. From September to March 31: daily 7am-6:45pm

Internet:

[dlnr.hawaii.gov/dsp/parks/oahu/kaiwi-state-scenic-shoreline](http://dlnr.hawaii.gov/dsp/parks/oahu/kaiwi-state-scenic-shoreline)

### Shangri La



The beautiful former home of Doris Duke is now a museum housing the Foundation for Islamic Art, which promotes the study and understanding of Islamic arts and cultures. Book a guided tour for exploring the five acre complex with the house itself, a playhouse, a pool, courtyards, terraces, gardens, and water feature. Access to Shangri La is by reservation or

business appointment only.

Photo: Catherine Jones/shutterstock

Address: The Shangri La Museum of Islamic Art, Culture & Design, 4055 Papu Circle, Honolulu, Oahu, HI

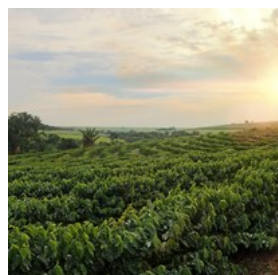
Phone: +1 808 734 1941

Internet: [www.shangrilahawaii.org](http://www.shangrilahawaii.org)

Email: [shangrilahawaii@ddcf.org](mailto:shangrilahawaii@ddcf.org)

More Info: Guided tours at Shangri La are offered regularly Wed-Sat at 9am, 11am, 1pm & 3pm. Tickets must be reserved in advance.

### Green World Coffee Farm



On this 7-acre farm, 2,000 arabica trees grow typical coffee beans from all over the Hawaiian islands. Free samples of at least 5 varieties of

coffee are always available in the store, and you can also enjoy a fresh cup at the espresso bar. However, do not forget to go on a self-guided tour to learn more about the production on the farm itself.

Photo: Andre Nery/shutterstock

Address: 71-101 North Kamehameha Highway, Wahiawa, Oahu, HI

Opening hours: Mon-Fri 7am-5pm, Sat & Sun 7am-6pm

Phone: +1 808 622 2326

Internet: [www.greenworldcoffeefarm.com](http://www.greenworldcoffeefarm.com)

Email: [admin@greenworldcoffeefarm.com](mailto:admin@greenworldcoffeefarm.com)

### Lyon Arboretum



The Harold L. Lyon Arboretum is 200-acre of real nature rather than a cosmetically designed and landscaped garden.

On the trails winding through this impressive scenery, you can find some of the most representative Hawaiian plants and trees, such as breadfruit and sugarcane, so do go here for a lovely and relaxing stroll.

Photo: Lisa Strachan/shutterstock

Address: 3860 Manoa Road, Honolulu, Oahu, HI

Opening hours: Mon-Fri 9am-3pm, Sat & Sun closed

Phone: +1 808 988 0456

Internet: [manoa.hawaii.edu/lyon](http://manoa.hawaii.edu/lyon)

More Info: All visitors are required to sign in at the Visitor Center.

### DINING



*oatako/shutterstock*

The cuisine of Oahu has naturally been influenced by its surroundings — seafood, therefore, plays a large part in the local cuisine, complemented by excellent roast meats (the traditional kalua pork should not be missed), as well as by daring Asian influences. Dishes are served with a wide range of fresh fruits and vegetables including the local root vegetable taro, which is usually mashed to turn poi, a staple in Hawaiian cuisine.

### Chef Chai



Chef Chai is claimed as one of Hawaii's top Hawaii Regional Cuisine chefs, and his menu fuses fresh Hawaii ingredients with flavors from Asia to

celebrate Oahu's cultural diversity. Chai's restaurants have been praised and recommended by Bon Appetite, Brides, Sunset, Cooking Light, Travel & Leisure, Gourmet Magazine, and many more, so do try and discover its flavors for

yourself.

Photo: Yuriy Golub/shutterstock

Address: 1009 Kapiolani Boulevard, Honolulu, Oahu, HI

Opening hours: Wed-Sun 4pm-9pm, Mon & Tue closed

Phone: +1 808 585 0011

Internet: [www.chefchai.com](http://www.chefchai.com)

Email: [chefchai@outlook.com](mailto:chefchai@outlook.com)

### Tangö Contemporary Cafe



Finnish chef Göran Streng nods to his heritage with a clean and trendy setting in his cafe, where you can enjoy a clever and eclectic

cuisine blending Scandinavian, Asian, Hawaiian and American classics. Featuring fresh, natural, and house-made ingredients, you can savor excellent dishes all day long since they are open for breakfast, brunch, lunch and dinner.

Photo: Foxys Forest Manufacture/shutterstock

Address: 1288 Ala Moana Boulevard, Suite 120, Honolulu, Oahu, HI

Phone: +1 808 593 7288

Internet: [www.tangocafehawaii.com](http://www.tangocafehawaii.com)

### Buzz's Steakhouse



Tiki style steakhouse featuring a surf 'n' turf menu and a variety of cocktails. Buzz's just happens to be former U.S. President Barack

Obama's favorite eatery whenever he is in Hawaii, so come see for yourself what the "buzz" is all about.

Photo: T photography/shutterstock

Address: 413 Kawailoa Road, Kailua, Oahu, HI

Phone: +1 808 261 4661

Internet: [www.buzzsoriginalsteakhouse.com](http://www.buzzsoriginalsteakhouse.com)

### Tanaka of Tokyo West



Situated in the Ala Moana Center, Tanaka is a Japanese restaurant serving a wonderful array of seafood and steak.

Here, your chosen meal is artistically prepared on your table-top grill. A few examples of what's on the menu are lobster tails, scallops, Black Angus sirloin, King salmon, and teriyaki chicken.

Photo: hlphoto/shutterstock

Address: 1450 Ala Moana Boulevard, Honolulu, Oahu, HI

Phone: +1 808 945 3443

Internet: [www.tanakaoftokyo.com/en/west](http://www.tanakaoftokyo.com/en/west)

### Arancino on Beachwalk



Arancino is an upscale Italian restaurant serving different typical dishes accompanied with great wines. As cheese, meat, and pasta get imported

all the way from Italy, all the dishes get that specific taste, and they are as authentic as Italian food far away from its source can possibly be.

Photo: fornStudio/shutterstock

Address: 255 Beach Walk, Honolulu, Oahu, HI

Opening hours: Daily 4:30pm-9:30pm

Phone: +1 808 923 5557

Internet: [arancino-beachwalk.arancino.com](http://arancino-beachwalk.arancino.com)

More Info: Other Arancino restaurants can be found at the Waikiki Beach Marriott Resort and at The Kahala Hotel & Resort

### Helena's Hawaiian Food



Helena's is a renowned Honolulu diner serving home-cooked specialties such as smoked short ribs pipikaula-style and squid luau. After being a local favorite for over 60 years, the restaurant and its chef Helen Kwock Chock received the James Beard Award in 2000. Her grandson, Craig Katsuyoshi now runs the restaurant.

Photo: bonchan/shutterstock

Address: 1240 North School Street, Honolulu, Oahu, HI

Opening hours: Tue-Fri 10am-7:30pm, Sat-Mon closed

Phone: +1 808 845 8044

Internet: [www.helenahawaiianfood.com](http://www.helenahawaiianfood.com)

More Info: Cash only

### Olive Tree Cafe



The Olive Tree is a self-serve Greek restaurant offering taramasalata, falafel, and souvlaki. As it is BYOB (=bring your own booze) without any corkage fee, this will relieve your budget but increase your Hawaii experience.

Photo: FoodAndPhoto/shutterstock

Address: Kahala Mall, 4614 Kilauea Avenue, Honolulu, Oahu, HI

Opening hours: Daily 5pm-9pm

Phone: +1 808 737 0303

Internet: [www.instagram.com/olivetreecafehi](http://www.instagram.com/olivetreecafehi)

### Kai Market



A regional "farm-to-table" menu and international flavors is what you can expect from Sheraton's Kai Market, as you will find everything from a

prime rib carving station to Chinese-style steamed fish and clams in a ginger-black-bean sauce. Daily open-air luau-style shows take place here as well.

Photo: enzo lau/shutterstock

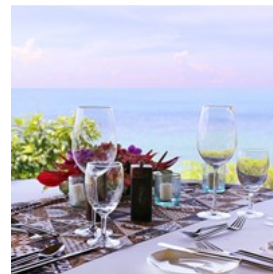
Address: Sheraton Waikiki Beach Resort, 2255 Kalakaua Avenue, Honolulu, Oahu, HI

Opening hours: Daily 6:30-10:30pm

Phone: +1 808 931 8636

Internet: [www.kaimarketwaikiki.com](http://www.kaimarketwaikiki.com)

### La Mer



La Mer is arguably the most beautiful dining facility in Oahu, as both art deco and haute-French cuisine reins in evenings of romance. Choose from three prix-fixe options and just enjoy an evening full of elegance and ocean views.

Photo: Anna Klepatchkaya/shutterstock

Address: Halekulani Hotel, 2199 Kalia Road, Honolulu, Oahu, HI

Opening hours: Tue-Sat 5:30pm-8:30pm, Sun & Mon closed

Phone: +1 808 923 2311

Internet: [www.halekulani.com/dining/la-mer](http://www.halekulani.com/dining/la-mer)

Email: [info@halekulani.com](mailto:info@halekulani.com)

### SingSing Thai Street Food



SingSing Thai has taken over the beloved Opal Thai, keeping the same focus on authentic Thai street food that began with its humble food truck origins. The menu features classics like aromatic tom kha soup, rich green curry, and flavorful drunken noodles. What sets SingSing apart is the warm hospitality of its owners, who are always eager to guide diners toward the

perfect dish based on their taste preferences.

Photo: SharkPaeCNX/shutterstock

Address: 1030 Smith Street, Suite 6, Honolulu, Oahu, HI

Phone: +1 808-785-6463

Internet: [www.instagram.com/singsing.hawaii](http://www.instagram.com/singsing.hawaii)

### The Pig & the Lady



Mixing Vietnamese tradition with island flavors, this restaurant acts as both an unassuming noodle house for the busy lunch crowd by day and a fine dining experience at night. Dishes are daring and flavorful, and they include combinations such as pork chop marinated in spiced guava leaves, and the desserts are equally innovative and delicious.

Photo: Viktory Panchenko/shutterstock

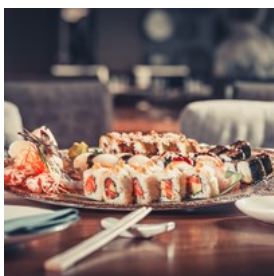
Address: 83 North King Street, Chinatown, Honolulu, Oahu, HI

Phone: +1 808 585 8255

Internet: [www.thepigandthelady.com](http://www.thepigandthelady.com)

Email: [info@thepigandthelady.com](mailto:info@thepigandthelady.com)

### Akasaka



Akasaka, a cozy sushi bar, is a testament to Hawaii's rich Japanese heritage. Tucked away in an unassuming location, this spot surprises with its exceptional sushi, sashimi, and grilled specialties like butterfish. For an authentic taste of Japan in the heart of Hawaii, Akasaka delivers an experience that's well worth seeking out.

Photo: Goinyk Production/shutterstock

Address: 1646 Kona Street B, Honolulu, Oahu, HI

Opening hours: Mon-Sat 11am-2pm / 5pm-11pm; Sun 5pm-10pm

Phone: +1 808 942 4466

Internet: [www.instagram.com/akasaka\\_hawaii](http://www.instagram.com/akasaka_hawaii)

### Cholo's Homestyle Mexican



Hawaii's multicultural heritage does not only include Asian and Polynesian influences, and this Mexican restaurant gives visitors

that other side of the Hawaiian melting pot, offering all the fixings you would expect: tacos, fajitas, burritos, enchiladas and much more. Also, the fish tacos are made with the freshest catch, and the margaritas with the juiciest mangoes.

Photo: Joshua Resnick/shutterstock

Address: North Shore Marketplace, 66-250 Kamehameha Highway, Honolulu, Oahu, HI

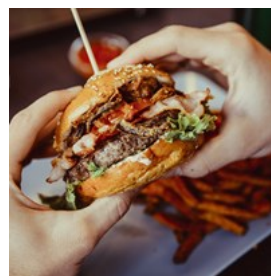
Opening hours: Sun-Thu 10:30am-8:30pm, Fri & Sat 10:30am-9pm

Phone: +1 808 637 3059

Internet: [www.cholos.mx](http://www.cholos.mx)

Email: [cholos@hawaii.rr.com](mailto:cholos@hawaii.rr.com)

### Kua Aina Sandwich



Kua Aina has been a go-to spot for locals and visitors since it opened in 1975. Known for its generously sized, hand-formed burgers, this

eatery lets you customize your meal with toppings like crispy bacon, melted cheese, creamy avocado, and the classic Hawaiian pineapple. Whether you're a burger enthusiast or just looking for a satisfying meal, Kua Aina is a must-visit.

Photo: veryulissa/shutterstock

Address: Hale'iwa Town Center, 66-160 Kamehameha Highway, Honolulu, Oahu, HI

Opening hours: Daily 11am-8pm

Phone: +1 808 637 6067

Internet: [www.kua-ainahawaii.com](http://www.kua-ainahawaii.com)

### Sorabol



Sorabol is the largest Korean restaurant in the city, lending to a vast menu of Korean cuisine and sushi favorites. Head here for experiencing

both tasteful Korean dishes and an authentic atmosphere.

Photo: Magdanatka/shutterstock

Address: Pagoda Hotel, 1525 Rycroft Street, Honolulu, Oahu, HI

Opening hours: Daily 10am-10pm

Phone: +1 808 947 3113

Internet: [www.sorabolkoreanrestaurant.com](http://www.sorabolkoreanrestaurant.com)

### Pho To Chau



Specialized in pho noodle soup, Pho To Chau will always be the default Vietnamese restaurant of Oahu, as they were the pioneer Vietnamese

venue on the island. While you will find legions of loyal customers during the week, it also attracts newcomers each day, so do expect long lines. However, it is worth the wait.

Photo: Joanna Tkaczuk/shutterstock

Address: 1007 River Street, Honolulu, Oahu, HI

Opening hours: Daily 9:30am-2:30pm

Phone: +1 808 533 4549

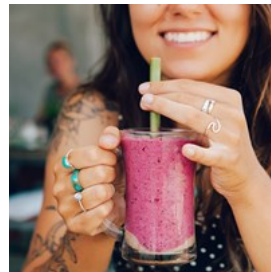
## CAFES



Alpha\_7D/shutterstock

Oahu's cafe culture is thriving, with talented baristas crafting specialty brews to suit every palate. Take a moment to relax and savor your drink in some of the island's most picturesque settings. Imagine sipping your coffee as a gentle sea breeze drifts by, surrounded by vibrant flowers and sweeping views of the Pacific Ocean. It's an experience that captures the essence of Oahu's laid-back charm.

### Heavenly Island Lifestyle



Farm-to-table cafe serving Hawaiian dishes made with local and organic produce in a colorful island setting. Very popular breakfast and brunch spot.

Photo: zjuzjaka/shutterstock

Address: Shoreline Hotel Waikiki, 342 Seaside Avenue, Honolulu, Oahu, HI

Phone: +1 808 923 1100

Internet: [www.heavenly-waikiki.com](http://www.heavenly-waikiki.com)

### Hiking Hawaii Cafe



Located underneath the Doubletree Alana Hotel, Hiking Hawaii Cafe is kind of a hidden gem of Waikiki. Serving fresh and healthy fare at a laid back and friendly atmosphere, this is a great place to start your day before hitting the great outdoors. On their menu, you'll also find non-dairy drinks as well as vegan snacks.

Photo: antoniodiaz/shutterstock

Address: DoubleTree by Hilton Alana, 1956 Ala Moana Boulevard, Honolulu, Oahu, HI  
Opening hours: Daily 7am-2pm  
Phone: +1 808 445 1717  
Internet: [www.hikinghicafe.com](http://www.hikinghicafe.com)

### Tea at 1024



For a unique tea experience, head to Tea at 1024. Once voted Best Afternoon Tea in Hawaii, this quaint little tea shop offers you the perfect English tea experience with a Hawaiian touch. While they prepare your tea, why not go all out and choose a hat and a feather boa for delighting in the quirky and fun atmosphere?

Photo: AlexandriaBryjak/shutterstock

Address: 1024 Nuuanu Avenue, Honolulu, Oahu, HI  
Opening hours: Wed-Fri 11am-1pm, Sat & Sun 11am-3pm  
Phone: +1 808 521 9596  
Internet: [www.teaat1024.net](http://www.teaat1024.net)

### Veranda at the Beachhouse

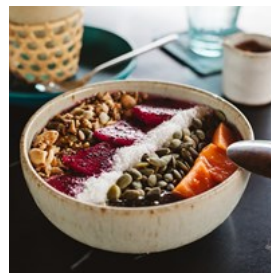


As Veranda is located at the Moana Surfrider hotel, this cafe is surrounded by elegant Victorian architecture right by the shores of Waikiki. Sit back and enjoy breakfast, lunch or the classic afternoon tea under the shade of an imposing Banyan tree, and your day could not have started any better.

Photo: Po S/shutterstock

Address: 2365 Kalakaua Avenue, Honolulu, Oahu, HI  
Phone: +1 808 931 8646  
Internet: [www.instagram.com/theverandamoana](http://www.instagram.com/theverandamoana)

### Island Vintage Coffee

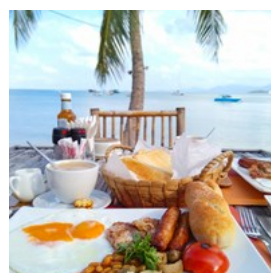


Island Vintage Coffee Company carries 100% gourmet Kona coffee, so they only feature the finest coffee beans chosen from volcanic soils of Hawaii. While having a coffee is almost mandatory, trying their tasty poke and açaí bowls as well as their sandwiches will also enrich your stay (and day).

Photo: Sasha shine bright/shutterstock

Address: Royal Hawaiian Center, 2301 Kalakaua Avenue, Honolulu, Oahu, HI  
Opening hours: Daily 6am-11pm  
Phone: +1 808 926 5662  
Internet: [www.islandvintagecoffee.com](http://www.islandvintagecoffee.com)

### Barefoot Beach Cafe



Barefoot Beach is a reliable choice for a budget-friendly breakfast, but it's equally worth visiting for lunch or dinner. Set right on the

sand, this spot offers more than just a satisfying menu — it's an experience. As the sun sets, the glow of tiki torches creates a warm, inviting atmosphere, making it the perfect place to unwind by the water.

Photo: Hanna Summer/shutterstock

Address: 2699 Kalakaua Avenue, Honolulu, Oahu, HI

Phone: +1 808 924 2233

Internet: [www.instagram.com/BarefootBeachCafe](http://www.instagram.com/BarefootBeachCafe)

Email: [info@barefootbeachcafe.com](mailto:info@barefootbeachcafe.com)

### Honolulu Coffee at Moana Surfrider



Located at the Moana Surfrider Resort & Spa in Waikiki Beach, the Surfrider Cafe is a trendy breakfast and lunch spot. They serve healthy dishes

at its beachfront location, and you will find a variety of specialty coffees, island fruit bowls, salads, freshly prepared lunch dishes and sandwiches on the menu.

Photo: Natalie magic/shutterstock

Address: 2365 Kalakaua Avenue, Honolulu, Oahu, HI

Opening hours: Daily 5:30am-8pm

Phone: +1 808 926 6162

Internet: [www.honolulucoffee.com](http://www.honolulucoffee.com)

### Sugoi Bento & Catering



Sugoi Bento is a breakfast-and-lunch Japanese diner known for their fast service, delicious food and large portions, so make sure you're hungry when you walk in here. Although their atmosphere does invite you to stay, do (also) build your own bento (=take-out portion) and don't leave without trying their famous crispy and tender garlic chicken, you will not be disappointed.

Photo: norikko/shutterstock

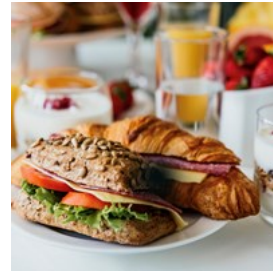
Address: City Square Shopping Center, 1286 Kalani Street, B-106, Honolulu, Oahu, HI

Opening hours: Mon-Sat 8am-3pm, Sun closed

Phone: +1 808 841 7984

Internet: [www.sugoihawaii.com](http://www.sugoihawaii.com)

### Cinnamon's



Specialized in breakfast and brunch foods, the dishes here strive to be fresh and free from chemicals, preservatives and additives, providing

wholesome and balanced meals. Although its name implicates sweet treats, you will also find savory dishes on their menu.

Photo: fornStudio/shutterstock

Address: 315 Uluniu Street, Kailua, Oahu, HI

Opening hours: Daily 7am-2pm

Phone: +1 808 261 8724

Internet: [www.cinnamons808.com](http://www.cinnamons808.com)

### BARS & NIGHTLIFE



Photo: oneinchpunch/shutterstock

After a day of surfing or soaking up the sun, unwind with Honolulu's famous Mai Tai cocktail. Sip, relax, and let the island's laid-back 'aloha' vibe wash over you. If the Mai Tais put you in the mood to move, hit one of the city's lively clubs or immerse yourself in Hawaiian culture by catching a traditional show or indulging in a luau feast.

### Polynesian Cultural Center Luau



The Polynesian Cultural Center hosts an amazing luau and buffet six nights a week, and it also offers a show entitled "Ha: Breath of Life." As this luau and the show are widely considered to be one of the most authentic experiences visitors can have of Hawaiian tradition and culture, make sure you do not miss it.

Photo: Deborah Kolb/shutterstock

Address: 55-370 Kamehameha Highway, Laie, Oahu, HI

Phone: +1 800 367 7060

Internet: [www.polynesia.com/dining](http://www.polynesia.com/dining)

Email: [customercare@polynesia.com](mailto:customercare@polynesia.com)

More Info: Opening hours of the luau vary so do check them on their website.

### Chief's Luau Admission



You can't leave Hawaii without enjoying an authentic luau. And this one on Oahu promises to give you and your family an experience to be remembered for years to come.

Immerse yourself in island culture as you watch a Polynesian show, learn headband weaving, or take a hula dance lesson. Then, indulge in a Hawaiian feast, including pineapple-glazed chicken and kalua pork.

Photo: Maridav/shutterstock

Address: Wet 'n' Wild Hawaii, 400 Farrington Highway, Kapolei, Oahu, HI

Phone: +1 808-664-0448

Internet: [www.chiefsluauhawaii.com](http://www.chiefsluauhawaii.com)

### Hanks Cafe Honolulu



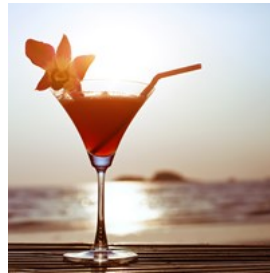
Hanks Cafe is a beloved local dive bar where live contemporary Hawaiian music sets the vibe, and friendly service keeps the drinks flowing. Owner Hank Taufasau originally opened the space as an art gallery to showcase his paintings and prints, but he added the bar to cover the bills — as he puts it, "Artists starve!" At Hanks Cafe, though, no one leaves hungry for good music, great drinks, or a welcoming atmosphere.

Photo: Thitinun Lerdkijsakul/shutterstock

Address: 1038 Nuuanu Avenue, Honolulu, Oahu, HI

Phone: +1 808 888 3988

### Mai Tai's Ala Moana



If you're looking for a place to start into the night (and maybe stay), stop by this award-winning rooftop bar. When night falls, you get to enjoy island-style live music while sipping cocktails like Cucumber Melon Crush, Mango Mai Tai, and Mandarin Sweet Tea Cooler.

Photo: Song\_about\_summer/shutterstock

Address: Ala Moana Center, 1450 Ala Moana Boulevard, Suite 3247, Honolulu, Oahu, HI

Opening hours: Daily 11am-1am

Phone: +1 808 941 4400

Internet: [www.maitaishawaii.com](http://www.maitaishawaii.com)

### Duke's Waikiki



This lively beachfront bar serves in the memory of Duke Kahanamoku who was the legendary Waikiki surfer, winning Olympic medals in

swimming and introducing surfing to Australia and New Zealand. Head here for some drinks and to learn more about this legend.

Photo: Maira Tessa/shutterstock

Address: Outrigger Waikiki Beach Resort, 2335 Kalakaua Avenue, Honolulu, Oahu, HI  
Opening hours: Daily 7am-midnight  
Phone: +1 808 922 2268  
Internet: [www.dukeswaikiki.com](http://www.dukeswaikiki.com)

### Nextdoor



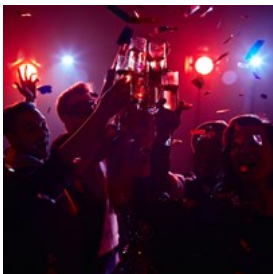
Nextdoor is a funky underground club in the heart of Chinatown, known for its eclectic mix of music — from dance and electro to reggae.

With a lineup that showcases both local and international talent, it's the perfect spot to discover fresh sounds and emerging trends. Whether you're there to dance or simply soak up the energy, Nextdoor delivers a unique nightlife experience.

Photo: Pressmaster/shutterstock

Address: 43 North Hotel Street, Honolulu, Oahu, HI  
Phone: +1 808 200 4470  
Internet: [www.nextdoorhi.com](http://www.nextdoorhi.com)

### Hulas Bar & Lei Stand



Hula's is Hawaii's oldest and best-known gay-friendly nightspot. Enjoy the view of Diamond Head and Waikiki beach during the day and head over to the dance floor during the night for some drag shows, male dancers and songs from past patrons including Elton John, Adam Lambert and Dolly Parton.

Photo: Pressmaster/shutterstock

Address: Waikiki Grand Hotel, 134 Kapahulu Avenue, Honolulu, Oahu, HI

Opening hours: Daily 10am-2am

Phone: +1 808 923 0669

Internet: [www.hulas.com](http://www.hulas.com)

### The Dragon Upstairs

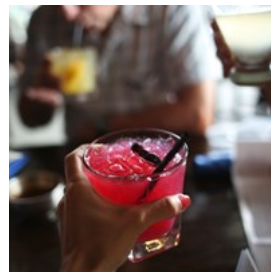


The Dragon Upstairs is a small and cozy bar just above Hank's Cafe offering live jazz music, a laid back atmosphere and great service. It's a great place to relax after a long day in the sun. Also, as it is located in the heart of Chinatown, many food options are nearby.

Photo: View Apart/shutterstock

Address: 1038 Nuuanu Avenue, Honolulu, Oahu, HI  
Phone: +1 808 526 1411  
Internet: [www.instagram.com/thedragonupstairs](http://www.instagram.com/thedragonupstairs)

### Wai'olu Ocean Cuisine



Boasting breathtaking sunset views and a sophisticated vibe, the Wai'olu Ocean Cuisine at the Ka La'i Waikiki Beach hotel is one of the spiffiest places in town. World class cuisine, live music and good drinks, including the World's Best Mai Tai are sure to make your night even more special.

Photo: N K/shutterstock

Address: Ka La'i Waikiki Beach, LXR Hotels & Resorts, 223 Saratoga Road, Honolulu, Oahu, HI  
Opening hours: Daily 11am-10pm  
Phone: +1 808 683 7456  
Internet: [www.hilton.com/en/hotels/hnlwiol-ka-lai-waikiki-beach/dining/waiolu-ocean-cuisine](http://www.hilton.com/en/hotels/hnlwiol-ka-lai-waikiki-beach/dining/waiolu-ocean-cuisine)

### Genius Lounge Sake Bar & Restaurant



The intimate and candle-lit ambiance at Genius Lounge is sophisticated but laid-back and, as it is very inviting, regularly

attracts locals and tourists alike. Their menu offers a wide selection of cocktails and sake, as well as Japanese-inspired dishes and Hawaiian fare.

Photo: Cabeça de Marmore/shutterstock

Address: 346 Lewers Street, Honolulu, Oahu, HI

Phone: +1 808 626 5362

Internet: [www.geniusloungehawaii.com](http://www.geniusloungehawaii.com)

## SHOPPING



*gpointstudio/shutterstock*

If you are looking for souvenirs or just a little self-indulgent shopping therapy, then Honolulu has everything you could possibly desire. From the bustle of the marketplace to the refined shopping experience of the designer boutique, Honolulu caters to all and everything. However, local shops tend to specialize in designer and vintage items and knickknacks, making Oahu a perfect place to shop for unique gifts.

### Luxury Row



Luxury Row brings the latest high fashion and luxury items to Oahu, offering luxury brands including Chanel, Coach, Tiffany & Co, Yves Saint

Laurent, Bottega Veneta, Gucci, and Hugo Boss. As the center is located in the heart of the Waikiki beach resort and urban retail district, you probably do not even have to travel far.

Photo: PeopleImages Yuri A/shutterstock

Address: 2100 Kalakaua Avenue, Honolulu, Oahu, HI

Opening hours: Daily 11am-9pm

Phone: +1 808 922 2246

Internet: [www.shopluxuryrow.com](http://www.shopluxuryrow.com)

### Hilo Hattie



Hilo Hattie at the Ala Moana Center is Honolulu's top destination for Hawaiian fashion, gifts, souvenirs, home and beach

accessories, beauty products, gourmet foods and stunning island jewelry. In fact, you can get almost everything here, so this is where tourists in the know go to get that Hawaiian shirt that visitors simply have to take back home.

Photo: ChameleonsEye/shutterstock

Address: 1450 Ala Moana Boulevard, Suite 1254, Honolulu, Oahu, HI

Phone: +1 808 973 3266

Internet: [www.hilohattie.com](http://www.hilohattie.com)

Email: [info@hilohattie.com](mailto:info@hilohattie.com)

### Ala Moana Center



Ala Moana is an enormous open-air shopping mall, hosting over 240 stores and 60 restaurants in the 50-acre complex and, thus, an impressive blend of international, national, and local boutiques. Gucci, Louis Vuitton, Christian Dior, and Armani are some of the brands located on site but you can also experience many more.

Photo: oneinchpunch/shutterstock

Address: 1450 Ala Moana Boulevard, Honolulu, Oahu, HI

Opening hours: Daily 10am-8pm

Phone: +1 808 955 9517

Internet: [www.alamoanacenter.com](http://www.alamoanacenter.com)

### Aloha Tower Marketplace



The Aloha Tower Marketplace is a lively waterfront market featuring restaurants, entertainment venues, shops, and kiosks. Stop by to experience a vibrant and colorful shopping experience and take home some souvenirs.

Photo: Vladimir Ramljak/shutterstock

Address: 1 Aloha Tower Drive, Honolulu, Oahu, HI

Phone: +1 808 544 1453

Internet: [www.alohatower.com](http://www.alohatower.com)

### Kahala Mall



Kahala Mall holds the distinction of being Hawaii's first mall. Though smaller than other shopping centers, it offers everything you need — from anchor stores and local boutiques to a range of eateries and a movie theater — often at more affordable prices. Whether you're

shopping, dining, or catching a film, Kahala Mall delivers a convenient and enjoyable experience.

Photo: Mongkolchon Akesin/shutterstock

Address: 4211 Waialae Avenue, Honolulu, Oahu, HI

Opening hours: Mon-Sat 10am-9pm, Sun 10am-6pm

Phone: +1 808 732 7736

Internet: [www.kahalamallcenter.com](http://www.kahalamallcenter.com)

### Bookends In Kailua



Bookends In Kailua is a proudly independent neighborhood bookstore with a quaint and familiar feel to it. As all the walls are lined with both new and used books, and the large children's section invites families to come and linger for a good while, browsing through the extensive selection is always a great experience here.

Photo: George Rudy/shutterstock

Address: Kailua Shopping Center, 600 Kailua Road, Suite 126, Kailua, Oahu, HI

Opening hours: Mon-Sat 9am-8pm, Sun 9am-5pm

Phone: +1 808 261 1996

Internet: [www.bookendskailua.com](http://www.bookendskailua.com)

### North Shore Marketplace



North Shore is a lush open-air plaza filled with art galleries, boutique shops, and the Haleiwa Surf Museum. Start your visit with a refreshing shaved ice from Aloha General Store, then explore over 20 shops and restaurants. From unique souvenirs at Aloha Vintage Vibes to some of the island's best Mexican cuisine and fresh seafood, there's something for everyone. Wander through art galleries showcasing local treasures, sip on locally roasted coffee, or indulge in homemade gelato — all while soaking up the

cultural influences of China, Japan, and the Philippines that shape this charming destination.

Photo: Kwangmoozaa/shutterstock  
Address: 66-250 Kamehameha Highway D203, Haleiwa, Oahu, HI  
Opening hours: Daily 7am-10pm  
Phone: +1 808 637 4416  
Internet: [www.northshoremarketplacehawaii.com](http://www.northshoremarketplacehawaii.com)

### Royal Hawaiian Center



Step into The Royal Grove and immerse yourself in the history of Helumoa, Waikiki's legendary coconut grove, located at the Royal Hawaiian Center. Spanning three blocks, the center features over 100 shops and restaurants, blending local and international brands for a truly authentic shopping and dining experience. While you're there, don't miss the complimentary offerings — from live music and hula performances to cultural classes — all set against the serene backdrop of The Royal Grove.

Photo: blackandbrightph/shutterstock  
Address: 2201 Kalakaua Avenue, Honolulu, Oahu, HI  
Opening hours: Daily 10am-9pm  
Phone: +1 808 922 2299  
Internet: [www.royalhawaiiancenter.com](http://www.royalhawaiiancenter.com)

### Aloha Stadium Swap Meet & Marketplace



On Wednesdays, Saturdays and Sundays, the parking lot of the Aloha Stadium becomes a huge marketplace, where vendors push everything from Hawaiian themed clothes, accessories and souvenirs to ethnic food, silk flowers and other decorations. If you're patient and search thoroughly, you'll come across really unique

items.

Photo: goodluz/shutterstock  
Address: Aloha Stadium, Aiea, Oahu, HI  
Opening hours: Wed & Sat 8am-3pm, Sun 6:30am-3pm  
Phone: +1 808 486 6704  
Internet: [www.alohastadiumswapmeet.net](http://www.alohastadiumswapmeet.net)  
More Info: There is a small admission charge.

### Waikele Premium Outlets



At the Waikele Premium Outlets, you'll find your favorite brands at exclusive prices, this is the place where you can shop till you drop. From clothes and shoes to bags and jewelry. Plus, a few eateries for when you decide to take a break from all the shopping.

Photo: Gorodenkoff/shutterstock  
Address: 94-790 Lumiaina Street, Honolulu, Oahu, HI  
Opening hours: Mon-Sat 9am-9pm, Sun 10am-6pm  
Phone: +1 808 676 5656  
Internet: [www.premiumoutlets.com/outlet/waikele](http://www.premiumoutlets.com/outlet/waikele)

### Waikiki Beach Walk



At the Beach Walk, 70 locally owned stores and restaurants greet eager shoppers and invite them to purchase one (or more) bargains. From stores like Mahina and Under the Koa Tree to many souvenir shops, everything can be found here. Weekly events also take place at this open-air mall such as concerts, yoga classes and hula performances.

Photo: Karen Grigoryan/shutterstock  
Address: 227 Lewers Street, Honolulu, Oahu, HI  
Opening hours: Daily 9:30am-10pm  
Phone: +1 808 931 3591  
Internet: [www.waikikibeachwalk.com](http://www.waikikibeachwalk.com)

### Waikiki Shopping Plaza



For an upscale shopping and dining experience, pay a visit to the Waikiki Shopping Plaza, a six-floor shopping center featuring unique

restaurants, exclusive boutiques with Hawaiian designer clothing, jewelry and gift items, as well as many international brands.

Photo: Elena Ermakova/shutterstock

Address: 2250 Kalakaua Avenue, Honolulu, Oahu, HI

Opening hours: Daily 6:30am-midnight

Phone: +1 808 923 1191

Internet: [www.waikikishoppingplaza.com](http://www.waikikishoppingplaza.com)

### Lanikai Bath & Body



The products for sale at Lanikai comprise everything for health, hygiene and beauty: from creams, lotions and soaps to bath salts and scrubs.

All products are made in Hawaii, using natural ingredients and extracts from all sorts of natural sources, including fruits, nuts and weeds.

Photo: Artem Oleshko/shutterstock

Address: Kailua Shopping Center, Kailua, Oahu, HI

Phone: +1 808 262 3260

Internet: [www.lanikaibathandbody.com](http://www.lanikaibathandbody.com)

Email: [info@lanikaibathandbody.com](mailto:info@lanikaibathandbody.com)

### Ward Village



The Ward Village is its own self-sustaining entertainment and shopping destination. A five-mall complex with over 130 specialty shops

and 40 eateries. In addition, it also hosts a 16-screen cinema, so you can easily spend a

whole day here.

Photo: StockLite/shutterstock

Address: 1240 Ala Moana Boulevard, Suite 200, Honolulu, Oahu, HI

Phone: +1 808 591 8411

Internet: [www.wardvillage.com](http://www.wardvillage.com)

Email: [marketing@wardvillage.com](mailto:marketing@wardvillage.com)

## TOURIST INFORMATION



Kelly Headrick/shutterstock

### Passport / Visa



Citizens of the Schengen countries, the United Kingdom, Ireland, Canada, Australia, New Zealand, Singapore, Japan, South Korea,

Taiwan and the Kingdom of Brunei can visit the United States for up to 90 days without applying for a visa (as well as citizens of Andorra, Lichtenstein, Monaco and San Marino). Citizens of these countries must obtain an ESTA (Electronic System for Travel Authorization) before traveling. All other travelers must obtain a visa before visiting the United States. International travelers need a passport that is valid for at least 3 months after the end of their intended trip to enter the country.

Photo: maramade/shutterstock

### Best Time to Visit



Oahu has great weather all year round and is considered to be one of Hawaii's best islands. However, the winter from November until March

can be more rainy, especially on the island's east coast, so this season can be considered as a less popular one with visitors. While the winter offers the best chances for whale watching, the period between May and September is the warmest, and thus tourists' favorite. Do consider traveling in off-season periods, as prices will be lower and both sights and streets less crowded.

Photo: Maridav/shutterstock

### Honolulu Airport (HNL)



Daniel K. Inouye International Airport in Honolulu is located approximately 2 miles (3 km) from Downtown Honolulu. Bus numbers

19 and 20 run from the airport to Downtown Honolulu and then on to Waikiki from 5am to 11:45pm.

Roberts Hawaii Tours and Transportation company operates a shuttle bus from the airport to any hotel in Waikiki, and another option is Oahu Airport Shuttle. There are also a number of taxi services waiting outside the terminal.

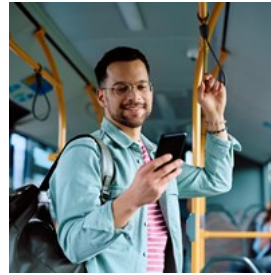
Photo: Dr. Victor Wong/shutterstock

Address: 300 Rodgers Boulevard, Honolulu, Oahu, HI

Phone: +1 808 836 6411

Internet: [airports.hawaii.gov/hnl](http://airports.hawaii.gov/hnl)

### Public Transport



Waikiki Trolley, the local transport service, has 40 drop off points between Downtown Honolulu, Waikiki, and Hanauma Bay, and they run

regularly. You can buy single tickets as well as 1, 4 or 7 day passes, and they will allow you to take every bus and even a ride at Double Deckers.

Photo: Drazen Zigic/shutterstock

Phone: +1 808 593 2822

Internet: [www.waikikitrolley.com](http://www.waikikitrolley.com)

Email: [aloha@waikikitrolley.com](mailto:aloha@waikikitrolley.com)

### Motorbike / Bicycle Rental



From Harleys to mountain bikes or whatever suits you best, the Big Kahuna Motorcycle Rentals provides you with all

kinds of mobility devices.

Photo: Allen.G/shutterstock

Address: Big Kahuna Motorcycle Rentals, 407 Seaside Avenue, Honolulu, Oahu, HI

Phone: +1 808 924 2736

Internet: [www.bigkahunarentals.com](http://www.bigkahunarentals.com)

Email: [info@bigkahunarentals.com](mailto:info@bigkahunarentals.com)

### Taxi



There are several taxi services operating across the island, and Charley's Taxi is one of the most known. Other options for lower fares are the

rideshare companies Uber and Lyft.

Photo: ImagingL/shutterstock

Phone: +1 808 531 1333

Internet: [www.charleystaxi.com](http://www.charleystaxi.com)

## Pharmacy

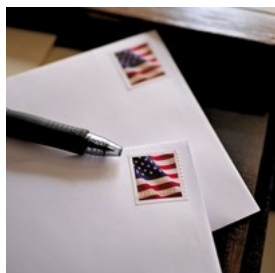


Chain pharmacies — Safeway, Walmart, Costco, Longs Drugs (owned by CVS) etc. — as well as smaller neighborhood stores

operate on Oahu. While working hours may greatly vary, a few are open 24/7. Pharmacy signs are often in red and white, and they are often located inside department stores. Most pharmacies sell both prescription and over the counter medicine.

Photo: Bonsales/shutterstock

## Post Office



The United States Postal Service (USPS) mainly operates around Honolulu, and the main office is at Ala Moana Boulevard. However,

there are several more and you recognize them by their blue logo. Here, you can get any service from buying stamps to sending packages.

3600 Aolele Street, Honolulu

+1 800 275 8777

Open Mon-Fri 9am-8pm, Sat 9am-4pm

438 Hobron Lane, Honolulu

+1 800 275 8777

Open Mon-Fri 10am-1pm / 1:30am-4:30pm; Sat 9am-10:30am

Photo: jmrainbow/shutterstock

Address: United States Postal Service, Ala Moana Center, 1450 Ala Moana Boulevard, Honolulu, Oahu, HI

Opening hours: Mon-Fri 9am-5pm, Sat 9am-4:30pm, Sun

closed

Phone: +1 800 275 8777

Internet: [tools.usps.com/locations/details/1352538](https://tools.usps.com/locations/details/1352538)

## Telephone



Country code: +1 Area code: 808

Photo: Besjunior/shutterstock

## Electricity



All power sockets in the United States provide a standard voltage of 110-120V with a standard frequency of 60Hz. Plug type A has two flat

parallel pins.

Photo: Toru Kimura/shutterstock

## Population

Oahu: 953,200

Honolulu: 387,170

## Currency

1 US Dollar = 100 Cents

## Opening hours

Most stores are open daily from 10am to 6pm or even longer, while most of the bars and clubs close down at 2am.

## Internet

[www.gohawaii.com/islands/oahu](http://www.gohawaii.com/islands/oahu)

## Newspapers

Honolulu Star-Advertiser: [www.staradvertiser.com](http://www.staradvertiser.com)

The Hawaii Independent (online):

[www.thehawaiiindependent.com](http://www.thehawaiiindependent.com)

Hawaii Tribune-Herald: [www.hawaii-tribune-herald.com](http://www.hawaii-tribune-herald.com)

## Emergency numbers

911

## Tourist information

Hawaii Visitors & Convention Bureau

2270 Kalakaua Avenue, Suite 801, Honolulu, HI

Open Mon-Fri 8am-4:30pm

+1 808 923 1811

[www.hvcb.org](http://www.hvcb.org)

[oahu@hvcb.org](mailto:oahu@hvcb.org)





