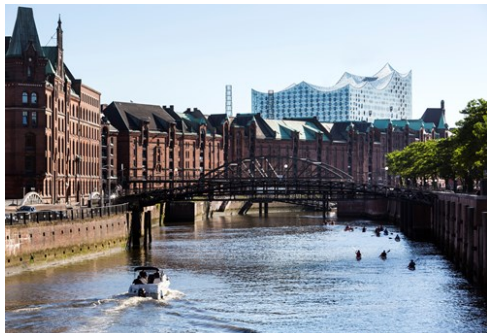




# Hamburg

Photo: CooperCopter GmbH/Hamburg Tourismus GmbH



Jörg Modrow/Hamburg Tourismus GmbH

The Elbe River, lakes and canals, the historic Town Hall, the UNESCO World Heritage Site Speicherstadt and Kontorhaus District with Chilehaus, the nightlife on the famous Reeperbahn and the traditional Hamburg fish market shape the image of Hamburg, Germany's green city on the waterfront. The Hafencity offers modern architecture and the new landmark, the concert hall Elbphilharmonie. In Hamburg — Germany's second biggest city — prestige, elegance and creativity are combined to create an edgy, modern vibe.



Hamburg Tourismus GmbH



Hamburg Tourismus GmbH

## Events



### Long Night of Museums

The Long Night of Museums is held annually, offering all art lovers the oppo...



### Hamburg Port Birthday — Ha...

Once a year in May the Port of Hamburg — the 'door to the world' — is busier...



### Elbjazz Festival

Elbjazz festival is one of the international festivals in Hamburg since 2010...



### Altonale

With more than 500,000 visitors, Altonale has established itself as one of t...



### Hamburg Harley Days

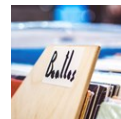
Taking place in the heart of Hamburg, Harley Days is the only Harley convent...

## Top 5



### Blankenese — the Pearl of ...

One of Germany's most beautiful hiking trails runs along the banks of the El...



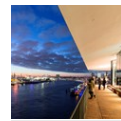
### Follow the Steps of the Be...

In the early 1960s, the Beatles laid the groundwork for their illustrious ca...



### Bike Tours around Hamburg

Explore Hamburg with a guided bike tour! It's an enjoyable and dynamic metho...



### Elbphilharmonie Plaza

The Plaza serves as the focal point of the Elbphilharmonie, bridging the war...



### Boat Trips around the Harb...

Discover the Port of Hamburg and the Speicherstadt (the Historic Warehouse C...

## THE CITY



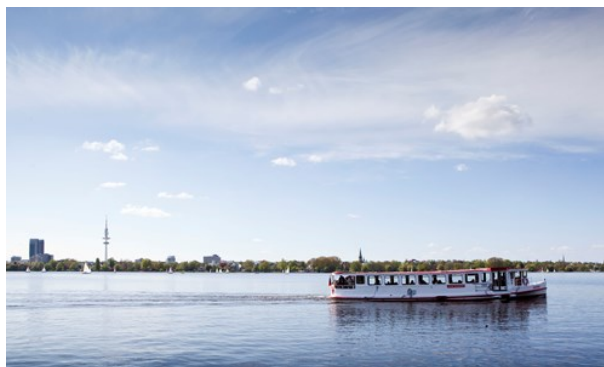
Hamburg Tourismus GmbH

A distinct maritime character and international outlook make the Hanseatic city of Hamburg one of Europe's finest destinations. Urban sparkle and natural beauty are the hallmarks of Hamburg, which boasts a wide range of hotels, restaurants, theatres and shops, chic beaches along the Elbe river, the verdant banks of the Alster, a buzzing port district and landmarks reflecting more than 1,200 years of history.

Leafy parks, glittering lakes and tranquil waterways within the pulsating urban jungle: for years Hamburg has proved that living in a big city is no impediment to having natural beauty at your doorstep. In addition, the port, the canals and the Alster lake give Hamburg a wonderfully maritime feel. From the beaches, quays and moorings to luxury cruise liners, container-laden behemoths and lovingly restored museum ships, this international port city has so much to offer and will give you a yearning to experience distant shores.

No visit to Hamburg is complete without a tour of the port and the historical Speicherstadt district with its warehouses and old bridges. You can also see the world's largest model railway in Speicherstadt at Hamburg's Miniatur Wunderland.

## TOP 10



Hamburg Tourismus GmbH

Hamburg is often hailed as Germany's most beautiful city, with its lively port creating a distinct international vibe. The city's Hanseatic charm ensures a memorable visit.

### Blankenese — the Pearl of the Elbe



One of Germany's most beautiful hiking trails runs along the banks of the Elbe to Blankenese. The former fishing village is now a prosperous suburb to the west of Hamburg, located right on the Elbe. Picturesque lanes, winding stairs and houses standing close together: with its Mediterranean feel, the Blankenese Treppenviertel is reminiscent of a resort on the Riviera. Blankeneser Bahnhofstraße is like a small city in itself, with its church, weekly market, many well-stocked shops, restaurants and ice cream parlours.

Photo: Hamburg Tourismus GmbH

Address: Blankenese, Hamburg

Internet: [www.hamburg.com/residents/neighbourhoods/11750234/blankenese](http://www.hamburg.com/residents/neighbourhoods/11750234/blankenese)

### Follow the Steps of the Beatles



In the early 1960s, the Beatles laid the groundwork for their illustrious career in Hamburg's St Pauli neighbourhood, the city's famous red-light district. Embark on a 'Beatles Tour' for a unique chance to trace the footsteps of the 'Fab Four' through St Pauli.

Photo: Mike/pexels

Address: Beatles-Platz, Reeperbahn 174, Hamburg

Internet: [tayloronatrip.com/beatles-in-hamburg-germany](http://tayloronatrip.com/beatles-in-hamburg-germany)

### Bike Tours around Hamburg

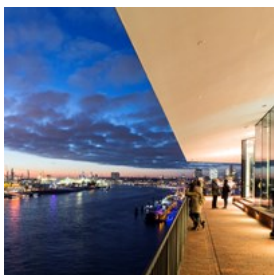


Explore Hamburg with a guided bike tour! It's an enjoyable and dynamic method to familiarise yourself with the city's diverse districts. Opt for city bikes, cruisers, kick bikes, or mountain bikes, and set out solo or with a group — all year round. It's the perfect way to swiftly see the city and access spots unreachable by bus.

Photo: Hamburg Tourismus GmbH

Internet: [www.hamburg-travel.com/experience/hamburg-tours/hamburg-by-bicycle](http://www.hamburg-travel.com/experience/hamburg-tours/hamburg-by-bicycle)

### Elbphilharmonie Plaza



The Plaza serves as the focal point of the Elbphilharmonie, bridging the warehouse and the new building. The public viewing platform offers a breathtaking panoramic view of the city and port from 37 metres above ground. Accessing it is an experience in itself, with an 80-metre-long, gently curved escalator

transporting visitors through the structure. An outdoor walkway encircles the entire building, providing a unique perspective.

Photo: Jörg Modrow/Hamburg Tourismus GmbH

Address: Platz der Deutschen Einheit 1, Hamburg

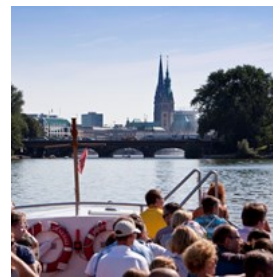
Public Transport: Subway U3, exit Baumwall

Phone: +49 40 357 66666

Internet: [www.elbphilharmonie.de/en/plaza](http://www.elbphilharmonie.de/en/plaza)

Email: [info@elbphilharmonie.de](mailto:info@elbphilharmonie.de)

### Boat Trips around the Harbor & Speicherstadt



Discover the Port of Hamburg and the Speicherstadt (the Historic Warehouse Complex) on what is typical for Hamburg — a boat! Small barges, historical steamboats and modern passenger ships take you to the most interesting parts of the harbour area within an hour or two. You can take the Maritime Circle Line, a hop-on hop-off tour which connects Hamburg's maritime cultural attractions.

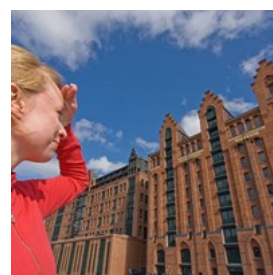
Photo: Modrow/Hamburg Tourismus GmbH

Address: Popular departure point: Landungsbrücken, Steinwerder 10, Hamburg

Public Transport: U3 Landungsbrücken

Internet: [www.hamburg-travel.com/see-explore/round-trips-tours/harbour-round-trips](http://www.hamburg-travel.com/see-explore/round-trips-tours/harbour-round-trips)

### Guided Walking Tours



Rediscover Hamburg from a fresh and exciting perspective. Whether you're exploring by bike or on foot, enjoying Nordic delicacies like the legendary fish sandwich, or embarking on a classic tour of the Hanseatic city's top sights, there's something for everyone. Shopping enthusiasts, brewing art connoisseurs, and

maritime lovers will all find entertainment and satisfaction.

Choose a short tour just to get to know the centre quickly, or pick one led by a historian to delve into the rich history of Hamburg. With options ranging from food tours and Beatles tours to nighttime pub crawls, there's a perfect Hamburg tour for everyone.

Photo: Hamburg Tourismus GmbH

Internet: [www.hamburg-travel.com/booking/tour-guides-and-thematic-walking-tours](http://www.hamburg-travel.com/booking/tour-guides-and-thematic-walking-tours)

### St Michael's Church



Hamburg has numerous grand churches, but there's only one 'Michel'. From its platform, over 100 metres high, you'll be treated to a fabulous view of Hamburg, the port, and the surrounding countryside — a must-see!

St Michael's Church has been rebuilt twice and now presents an informative exhibition on its history, which is filled with twists and turns.

Photo: Lucas Pretzel/Hamburg Tourismus GmbH

Address: Hauptkirche Sankt Michaelis, Englische Planke 1, Hamburg

Public Transport: U3 Baumwall or Rödingsmarkt, S3 Stadthausbrücke

Phone: +49 40 376 780

Internet: [www.st-michaelis.de/en](http://www.st-michaelis.de/en)

Email: [info@st-michaelis.de](mailto:info@st-michaelis.de)

### Alster Lakes



Covering over 160 hectares, the Inner and Outer Alster Lakes are located right in the city centre, surrounded by cafes, parks, and walking paths, with an abundance of oaks and chestnut trees for nature lovers. Ideal for renting a canoe, pedal boat, rowing boat, or sailboat to stay active. The area is enhanced by sculptures both on land and in the lake.

Vast bodies of water are often best enjoyed during the golden hour and aboard a boat. Gather a small group of friends and book a one-hour sailboat ride at sunset.

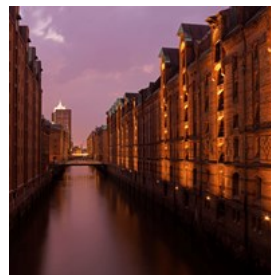
Photo: Hamburg Tourismus GmbH

Address: Harvestehude

Public Transport: Jungfernstieg, U1, U2, S1, S3

Internet: [www.hamburg-travel.com/discover-hamburg/areas/all-around-the-alster](http://www.hamburg-travel.com/discover-hamburg/areas/all-around-the-alster)

### Speicherstadt — the Historic Warehouse Complex



Over a century old, the Speicherstadt is the world's largest integrated complex of warehouses. Visitors to Hamburg will discover a picturesque setting of Wilhelmine era Gothic architecture rendered in red brick, featuring unusual gables and towers. Precious commodities are stored at controlled temperatures behind the massive walls: coffee, tea, cocoa, spices, tobacco, and the world's largest collection of Oriental rugs.

If you're pressed for time or wish to give your feet a rest after exploring the city, consider taking a one-hour evening boat tour. The

Speicherstadt looks particularly enchanting at sunset.

Photo: Hamburg Tourismus GmbH

Address: Am Sandtorkai 36, Hamburg

Public Transport: U3 Baumwall, U1 Meßberg, U4

Überseequartier

Phone: +49 40 321191

Internet:

[www.hamburg.com/architecture/11748606/speicherstadt](http://www.hamburg.com/architecture/11748606/speicherstadt)

Email: [info@speicherstadtmuseum.de](mailto:info@speicherstadtmuseum.de)

More Info: Since 2015, the Speicherstadt, along with the Chilehaus and the Kontorhausviertel, have been part of the UNESCO World Heritage.

### Miniatur Wunderland



Miniatur Wunderland is the world's largest model railway museum and Germany's most popular tourist attraction. Its display sections feature authentic environments from various countries, ranging from Sweden and Norway to the pyramids of Egypt and Las Vegas in the U.S.

The exhibit alternates between 'day' and 'night' every 15 minutes. Visitors can also take a guided tour to see behind the scenes at Wunderland, gaining a deeper appreciation for the technical wizardry and planning involved in running this extraordinary place.

Photo: Miniatur Wunderland Hamburg/Hamburg Tourismus GmbH

Address: Kehrwieder 2-4, Block D, Hamburg

Public Transport: U3 Baumwall

Phone: +49 40 300 6800

Internet: [www.miniatur-wunderland.com](http://www.miniatur-wunderland.com)

Email: [info@miniatur-wunderland.de](mailto:info@miniatur-wunderland.de)

### DO & SEE



©Christian Spahr/bier/Hamburg Tourismus GmbH

Since the medieval days of the Hanseatic League, Hamburg has retained its free spirit and status as an international port city, with the wealth and cosmopolitan vibe that comes with the constant ebb and flow of seafarers. The edgy atmosphere can still be felt in the bars and clubs on the Reeperbahn in St Pauli — an area that has entertained sailors for centuries.

To explore the more relaxing and peaceful side of Hamburg, wander its canals or stroll along the Alster Lakes in the summer.

Hamburg is also embracing modernity. The new Hafencity district adds a distinctive contemporary touch to the waterfront, and the instantly iconic Elbphilharmonie is stunning both inside and out.

### The Red Double-Decker Tours



Discover the best of Hamburg with the Red Double Decker bus day ticket on Line A. With 20 stops to choose from, hop on and off as you please

to take a closer look at the magnificent sights of this maritime metropolis. Additional tours, such as the twilight tour or the Elbe riverside tour, are also available, offering even locals new

perspectives of Hamburg.

Photo: North West Transport Photos/Flickr(image cropped)  
Internet: [www.die-roten-doppeldecker.de](http://www.die-roten-doppeldecker.de)

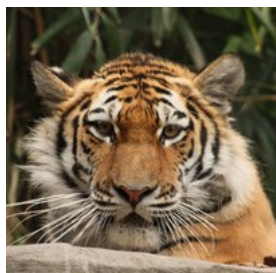
### MS Cap San Diego



MS Cap San Diego is the largest seaworthy museum cargo ship in the world. Experience and discover 160 metres of shipping history and embark on a long voyage with the English booklet. Stop for a break in the 'Bord-Bistro' and stay the night on, instead of, by the Elbe river in one of our passenger cabins. During the diversity of evening events you may also meet the ship's kobold (mischievous household spirit) or even set sail!

Photo: Hamburg Tourismus GmbH  
Address: Überseebrücke, Hamburg  
Public Transport: U3 bis Haltestelle Baumwall  
Opening hours: Daily 10am-6pm  
Phone: +49 40 36 42 09  
Internet: [www.capsandiego.de](http://www.capsandiego.de)  
Email: [info@capsandiego.de](mailto:info@capsandiego.de)

### Hagenbeck Zoo – the Wild Side of Hamburg



Discover Hamburg's Hagenbeck Zoo. In a park of 19 hectares you can find more than 1,850 animals from all over the world including

Germany's only walrus family. Guests experience an expedition around the equator at the Tropical World Adventure Aquarium, where you can find more than 14,300 animals of 300 species.

Photo: Götz Berlik/Hamburg Tourismus GmbH  
Address: Lokstedter Grenzstraße 2, Hamburg  
Public Transport: U2 Hagenbecks Tierpark  
Opening hours: Daily from 9am. Closing time changes with

the seasons

Phone: +49 40 53 00 33 0  
Internet: [www.hagenbeck.de](http://www.hagenbeck.de)

### Chocoversum



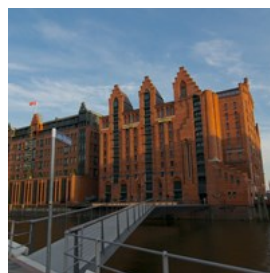
Chocoversum is Hamburg's sweetest museum, in the heart of Germany's chocolate capital. Uncover the secrets of the world's

finest chocolates with all your senses. A guide will take you on a 90-minute journey from the cocoa tree to freshly wrapped chocolates.

Witness historic machines in action and savour a taste at every production step. To top it off, you'll even create your own bar of chocolate.

Photo: Hachez Chocoversum GmbH  
Address: Meßberg 1, Hamburg  
Public Transport: U1 Haltestelle Meßberg  
Opening hours: Daily 10am-6pm  
Phone: +49 40 41 91 2300  
Internet: [chocoversum.de/en](http://chocoversum.de/en)

### International Maritime Museum



Experience the sea at the Maritime Museum, which showcases 3,000 years of seafaring history with precious artefacts from around the world.

Welcome aboard! Discover the stories of wind, waves, explorers, and pirates. The museum boasts over 40,000 miniature model ships, a treasure chamber with models made of gold, silver, and amber, the Queen Mary 2 constructed from 1 million LEGO bricks, and a professional ship simulator.

Photo: Hamburg Tourismus GmbH  
Address: Koreastraße 1, Hamburg  
Public Transport: U4 Überseequartier; Busline 6 St. Annen;

Busline 111 Osakaallee  
Opening hours: Daily 10am–6pm  
Phone: +49 40 3 00 92 300  
Internet: [www.imm-hamburg.de](http://www.imm-hamburg.de)

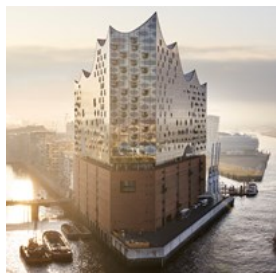
### Hamburg Fish Market



Sunday morning, 5 am. While most people are usually still asleep at this time, Hamburg is buzzing with activity. At the city's fish market in Altona, by the Elbe, around 70,000 people are either already working or still out and about. Trading here dates back to 1703. Night owls from the Reeperbahn and market enthusiasts meet once a week at this early hour to either end their night or start their day with live music in the fish auction hall.

Photo: Christian Spahrbier/Hamburg Tourismus GmbH  
Address: St Pauli Fischmarkt 2, Hamburg  
Public Transport: U3, S1, S2, S3 to Landungsbrücken  
Opening hours: April through October: daily 5am–9:30am.  
November through March: daily 7am–9:30am.  
Internet: [www.hamburg-travel.com/attractions/hamburg-mari-time/fish-market](http://www.hamburg-travel.com/attractions/hamburg-mari-time/fish-market)

### Elbphilharmonie Hamburg

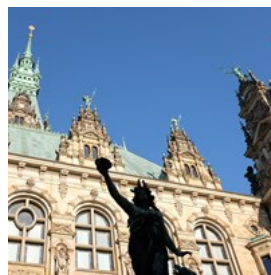


The Elbphilharmonie is the new landmark of the metropolis on the waterfront. With the Elbphilharmonie Hamburg forges its path as a port city and a city of music, once again demonstrating that the city is shaping its future based on contrast. The spectacular building contains three concert halls with a diverse music programme, a comprehensive music education programme, a hotel, as well as the Plaza — a public viewing platform at a height of 37 metres that offers an amazing view of the city.

If you are a modern architecture nerd, you simply must take the extremely popular guided tour that tells you all about the building's construction and history.

Photo: Cooper Copter GmbH  
Address: Platz der Deutschen Einheit 2, Hamburg  
Public Transport: Subway U3, exit Baumwall  
Phone: +49 40 357 666 0  
Internet: [www.elbphilharmonie.de/en](http://www.elbphilharmonie.de/en)

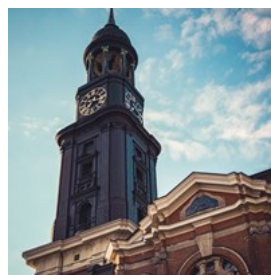
### Hamburg City Hall



Unusually lavish for Hanseatic taste, the splendid sandstone edifice built in 1886–1897 in Neo-Renaissance style dominates the city centre. Hamburg Town Hall is the seat of the city's Senate (state government) and Bürgerschaft (parliament). With a total of 647 rooms, the building has more rooms than Buckingham Palace. The Town Hall can only be viewed on guided tours. Also worth seeing is the fountain of Hamburg's patron goddess, Harmonia, in the Town Hall's courtyard.

Photo: Malte Flechner/Hamburg Tourismus GmbH  
Address: Hamburger Rathaus, Rathausmarkt, Hamburg  
Public Transport: Rathaus, U3 or Jungfernstieg, S1, S2, S3, U1, U4  
Opening hours: Daily 8am–6pm  
Internet: [www.hamburg.com/sights/history-and-heritage/11747650/city-hall](http://www.hamburg.com/sights/history-and-heritage/11747650/city-hall)

### St Michael's Church

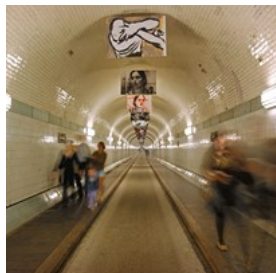


Hamburg's famous 'Michel' church is not only the most important baroque church in northern Germany; it has also served as an

important landmark for boats travelling on the river Elbe, akin to one of the world's tallest lighthouses. The 106-metre-high viewing platform offers wonderful panoramic views of Hamburg and the harbour, making it a great destination for a romantic evening date.

Photo: Lucas Pretzel/Hamburg Tourismus GmbH  
Address: Hauptkirche Sankt Michaelis, Englische Planke 1, Hamburg  
Public Transport: U3 Baumwall or Rödingsmarkt, S3 Stadthausbrücke  
Phone: +49 40 376 780  
Internet: [www.st-michaelis.de/en](http://www.st-michaelis.de/en)  
Email: [info@st-michaelis.de](mailto:info@st-michaelis.de)

### Old Elbe Tunnel



When the Old Elbe Tunnel, also called St Pauli Elbe Tunnel, was opened in 1911, it was a technical sensation.

Today, it is a nostalgic and lovingly tended piece of Hamburg history.

The distinctive, square, domed structure on the St Pauli Landungsbrücken houses the machinery and the four lifts, which have transported people and vehicles at a depth of nearly 24 metres for over 100 years. After 426.5 metres beneath the Elbe and through the two tiled tunnels with a diameter of 6 metres, you return to daylight in Steinwerder and can enjoy a wonderful view over the harbour.

Photo: Christian Spahrbier/Hamburg Tourismus GmbH  
Address: Alter Elbtunnel, St. Pauli Landungsbrücken 7, Hamburg  
Public Transport: Landungsbrücken: U3, S1, S2, S3 or Alter Elbtunnel: Bus156  
Opening hours: For pedestrians and cyclists: always open (cyclists must follow the flow of traffic or push their bikes).  
Exception: 31 December (New Year's Eve) 9pm-4am  
Internet:

[www.hamburg.com/architecture/11748660/old-elbe-tunnel](http://www.hamburg.com/architecture/11748660/old-elbe-tunnel)

### Reeperbahn



The Reeperbahn is a living legend. In the past, it was a seedy red-light quarter for seafarers. During the 1960s, it was a stepping stone for the Beatles. Since the 1990s, the red-light district has gradually transformed into a unique entertainment district with bars and clubs, art galleries, cabarets, theatres, and top-class restaurants.

If you want your night out to come with a side of history, opt for an intimate nighttime tour. You'll get some fun facts and tips from the locals, as well as a beer and a shot.

Photo: Christian Spahrbier/Hamburg Tourismus GmbH  
Address: Reeperbahn, Hamburg  
Public Transport: Reeperbahn, S1, S3 or St. Pauli, U3  
Internet: [www.hamburg-travel.com/see-explore/sightseeing/reeperbahn](http://www.hamburg-travel.com/see-explore/sightseeing/reeperbahn)

### Musicals



Experiencing a musical is a fantastic way to spend an afternoon or evening. Since Cats made its debut in Hamburg, the city has hosted many celebrated musicals such as The Lion King, Disney's Tarzan, The Phantom of the Opera, Mamma Mia, and even Hamilton.

Many of the musical theatres are conveniently located right on the Reeperbahn.

Photo: [www.mediaserver.hamburg.de/Hamburg Tourismus GmbH](http://www.mediaserver.hamburg.de/Hamburg_Tourismus_GmbH)

Phone: +49 1805 44 70 000

Internet: [www.hamburg.com/explore/musicals](http://www.hamburg.com/explore/musicals)

### Hamburg Dungeon



The Hamburg Dungeon is a place where the city's dark past comes alive. Talented actors recount chilling tales and twisted fables from Hamburg's history. Along the tour, you'll encounter spooky surprises and two thrilling rides: a short boat ride and a free-fall ride.

Photo: Hamburg Dungeon/Hamburg Tourismus GmbH

Address: Kehrwieder 2, Hamburg

Public Transport: U1 Meißberg, U3 Baumwall, Bus 3/6 Auf dem Sande

Opening hours: Daily from 10am

Phone: +49 40 36 00 55 00

Internet: [www.thedungeons.com/hamburg/en](http://www.thedungeons.com/hamburg/en)

More Info: Located next to Miniatur Wunderland

### Bucerius Kunst Forum



Located in the heart of Hamburg next to the Town Hall, the Bucerius Kunst Forum exhibits art from ancient to modern times in four rotating exhibitions each year. A visit is an absolute must for art lovers. The concept of the Kunst Forum is based on reinventing the familiar to allow art lovers and novices alike to discover new interrelationships.

Since its foundation in 2002, the Bucerius Kunst Forum has become one of the leading exhibition houses in northern Germany. A unique, modern exhibition space was created in the historic building of the former Reichsbank.

Photo: Wolfgang Neeb/Hamburg Tourismus GmbH

Address: Rathausmarkt 2, Hamburg

Public Transport: All subway trains going to Jungernstieg and Rathaus

Opening hours: Daily 11am-7pm, Thu until 9pm

Phone: +49 40 360 99 60

Internet: [www.buceriuskunstforum.de/en](http://www.buceriuskunstforum.de/en)

Email: [info@buceriuskunstforum.de](mailto:info@buceriuskunstforum.de)

### Deichtorhallen



For contemporary art and photography, head over to Deichtorhallen, located in two former market halls built between 1911 and 1914. Spanning 5,600 square metres, it's the largest art space in Europe.

Photo: Hamburg Tourismus GmbH

Address: Deichtorstrasse 1, Hamburg

Public Transport: Steinstraße U1 or Central Station

Opening hours: Tue-Sun 11am-6pm, Mon closed. Every first Thu of the month 11am-9pm

Phone: +49 40 32 10 30

Internet: [www.deichtorhallen.de/en](http://www.deichtorhallen.de/en)

Email: [besucherbuero@deichtorhallen.de](mailto:besucherbuero@deichtorhallen.de)

### BallinStadt – Emigrant Museum Hamburg



It's a captivating story — the tale of BallinStadt, the 'Emigration City', where millions of people found a safe haven before embarking on their journey to the New World in search of a better life. The museum chronicles the great European migration to America from 1850 to 1934. Here, you can explore the various emigration stations throughout the centuries. Across 14 themed rooms, the museum recounts the stories of emigration to the New World across four eras.

In the family research centre, you can trace your ancestors in Hamburg: you have access to the

digitised version of the unique Hamburg passenger lists.

Photo: mediaserver/Hamburg Tourismus GmbH  
Address: BallinStadt Auswanderermuseum, Veddelr Bogen 2, Hamburg  
Public Transport: S3 Station Veddel (BallinStadt)  
Opening hours: March through October: Tue-Sun 10am-6pm.  
November through February: Tue-Sun 10am-4:40pm. Mon closed.  
Phone: +49 40 31 97 91 60  
Internet: [www.ballinstadt.de/en](http://www.ballinstadt.de/en)  
Email: [info@ballinstadt.de](mailto:info@ballinstadt.de)

### Park Pflanzen un Blumen

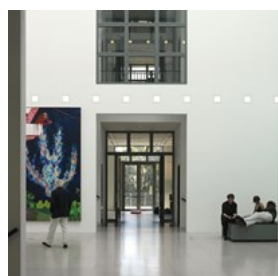


Take a stroll around the famous park Pflanzen un Blumen, located in the heart of the city. Unwind and enjoy tropical plants, the largest Japanese garden in Europe and a rose garden. In the summer, the park offers daily theatre performances for children. From May to September, the colourfully lit fountain concerts are the highlight of the park.

You'll find several cafes in the park, as well as a great restaurant.

Photo: Christian Spahrbier/Hamburg Tourismus GmbH  
Address: St. Petersburger Straße 28, Hamburg  
Public Transport: Stephansplatz, U1 and Dammtor, S11, S21, S31  
Internet: [plantenunblomen.hamburg.de](http://plantenunblomen.hamburg.de)

### Hamburger Kunsthalle



Opened in 1869 and originally the epitome of Hamburg's bourgeois art, the Kunsthalle is now recognised as one of Germany's leading art galleries.

The adjacent Gallery of Contemporary Art, which opened in 1996 at its prominent location, complements the main collection with ambitious examples of contemporary art. Over 700 works are permanently on display, and the restaurant, The Cube, offers one of the most stunning views over the city.

Photo: Christian Spahrbier/Hamburg Tourismus GmbH  
Address: Glockengiesserswall, Hamburg  
Public Transport: Hauptbahnhof  
Opening hours: Tue, Wed & Fri-Sun 10am-6pm; Thu 10am-9pm; Mon closed  
Phone: +49 40 42 81 31 200  
Internet: [www.hamburger-kunsthalle.de/en](http://www.hamburger-kunsthalle.de/en)  
Email: [info@hamburger-kunsthalle.de](mailto:info@hamburger-kunsthalle.de)

### Planetarium Hamburg



Housed in an old water tower, this planetarium is one of the most advanced in the world. Discover fascinating facts about our planet, space, and the mysteries of black holes. It's a great experience for the whole family, offering sky shows, live concerts, music and multimedia shows with incredible laser effects, and intriguing lectures.

Photo: Hamburg Tourismus GmbH  
Address: Linnering 1 (Stadtpark), Hamburg  
Public Transport: Metrobus 6, station Borgweg  
Opening hours: Tue 9am-7pm, Wed 9am-5pm, Thu & Fri 9am-9pm, Sat noon-10:30pm, Sun 10am-7pm, Mon closed  
Phone: +49 40 42 88 65 210  
Internet: [www.planetarium-hamburg.de/en](http://www.planetarium-hamburg.de/en)  
Email: [info@planetarium-hamburg.de](mailto:info@planetarium-hamburg.de)

## UNESCO WORLD HERITAGE



Hamburg Tourismus GmbH

What does the Taj Mahal in India, the Peruvian Inka city of Machu Picchu and the Great Pyramids of Giza have in common with Hamburg? They all belong to the UNESCO World Heritage Site. On 5 July 2015, the Hamburg ensemble 'Speicherstadt and Kontorhaus District with Chilehaus' was added to the UNESCO World Heritage List, making it one of the world's 'masterpieces of human creation with outstanding universal value'.

### Speicherstadt



The Speicherstadt is one of the main highlights of the great harbour tour. Built in 1883, five years before Hamburg was granted its free port, this world's largest integrated complex of warehouses has been under historic monument protection since 1991. Constructed on oak piles, the district is crisscrossed by fleets — canals that are flooded with the tides and navigable by ship.

You can explore the narrow canals in small barges to appreciate the architectural details when the tide permits. A canal tour on a historic barge like this offers an unforgettable experience. Most tours start from the landing stages in St Pauli, and groups can even charter

an entire barge.

Located in the Freihafen between Deichtorhallen and Baumwall, this is the world's largest contiguous warehouse complex.

Photo: Hamburg Tourismus GmbH

Public Transport: U3 Baumwall, U3 Meßberg, U4 Überseequartier

Internet:

[www.hamburg.com/architecture/11748606/speicherstadt](http://www.hamburg.com/architecture/11748606/speicherstadt)

### Chilehaus



The Chilehaus is one of the finest examples of 'Brick Expressionism' — an architectural style that was popular in Hamburg in the 1920s, characterised by the use of clay tiles and hard-baked bricks. Designed by architect Fritz Höger, the Chilehaus sits at the heart of Hamburg's Kontorhaus district.

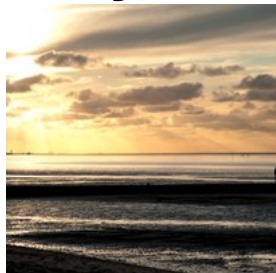
The building's name originates from the trade in nitrate between Hamburg and Chile. Constructed between 1922 and 1924, it was one of Hamburg's first high-rise buildings. The Kontorhaus district, along with the Speicherstadt district, was nominated as a UNESCO World Heritage Site in 2015.

Photo: canadastock/shutterstock

Address: Fischertwiete 2, Hamburg

Internet: [www.chilehaus.de/en\\_GB](http://www.chilehaus.de/en_GB)

## Hamburg Wadden Sea



The Hamburg Wadden Sea National Park was created to protect the single ecological entity of the Waddensea of Hamburg, a UNESCO

biosphere reserve. It is an exclave of the city state of Hamburg in North Germany and lies in the estuary of the Elbe in the North Sea.

In June 2011, the entire German section of the Wadden Sea, including the Hamburg Wadden Sea, became a World Heritage Site after more than 9,500 square kilometres of tidal flats off the coasts of Schleswig-Holstein, Lower Saxony and the Netherlands were included in 2009.

Photo: Hamburg Tourismus GmbH

Address: Hamburgisches Wattenmeer

Internet: [www.nationalpark-wattenmeer.de/hh](http://www.nationalpark-wattenmeer.de/hh)

## EVENTS



Christian Spahrbier/Hamburg Tourismus GmbH

Whether your passion is art, music or theatre — you will be amazed by the cultural diversity Hamburg has to offer. Film festivals, maritime adventures, music festivals and concerts, sports events, fairs and parades are all waiting for you to make your stay unforgettable.

## Long Night of Museums



The Long Night of Museums is held annually, offering all art lovers the opportunity to visit as many exhibitions as they can in one night.

Guided tours, culinary delights, music, dance and many other events in more than 50 museums and exhibition locations are waiting for you. Create your individual route and explore different museums in eight long night hours.

Photo: Museumsdiens Hamburg

Opening hours: Usually takes place in April

Internet: [www.langenachtdermuseen-hamburg.de/english](http://www.langenachtdermuseen-hamburg.de/english)

## Hamburg Port Birthday — Hafengeburtstag Hamburg



Once a year in May the Port of Hamburg — the 'door to the world' — is busier than ever. About 1.5 million people gather to celebrate the Hamburg

Port Birthday with the greatest harbour festival in the world on the nearly four kilometre-long 'Harbour Mile' along the Elbe between the Hafencity and the Övelgönne Museum Harbour. Special highlights include the breathtaking fireworks display, ship launches and parades, and the unique tugboat ballet.

Photo: Christian Spahrbier/Hamburg Tourismus GmbH

Address: Close to the St Pauli Landungsbrücken

Public Transport: Subway U3, exit Landungsbrücken

Internet: [www.hamburg.de/hafengeburtstag](http://www.hamburg.de/hafengeburtstag)

### Elbjazz Festival



Elbjazz festival is one of the international festivals in Hamburg since 2010. About 50 musical acts of all varieties of jazz and related genres take place in front of the unique scenery of the Hamburg harbour. The festival stages are always located in unconventional yet distinctly jazzy venues like shipyards and old freight ships.

Photo: Ilona Henne/Hamburg Tourismus GmbH  
Internet: [elbjazz.de/en](http://elbjazz.de/en)

### Altonale



With more than 500,000 visitors, Altonale has established itself as one of the most popular cultural events in north Germany. Every year, Altonale develops new ideas and offers for its visitors. The festival is subdivided into art altonale, literature altonale, theatre altonale, film altonale and music altonale. The events are held in unusual places all over Altona.

Photo: Hamburg Tourismus GmbH  
Address: Bahrenfelder Straße, Hamburg  
Opening hours: Usually takes place in the end of May to early June  
Internet: [www.altonale.de](http://www.altonale.de)

### Hamburg Harley Days

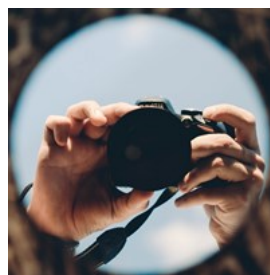


Taking place in the heart of Hamburg, Harley Days is the only Harley convention in the world held in the middle of a city. Nothing could be more Harley, more Hamburg and more birthday celebration on a single weekend, and so the

Harley party of the year is already almost an obligation for genuine fans of two-wheelers!

Photo: Hamburg Tourismus GmbH  
Address: Großmarkt Hamburg  
Public Transport: Subway U1, exit Steinstraße; S3, exit Hammerbrook  
Opening hours: Takes place at the last weekend of June  
Internet: [www.hamburgharleydays.com](http://www.hamburgharleydays.com)

### Triennial of Photography Hamburg



Since 1999, the photo festival has taken place every third year in Hamburg, Germany, together with the city's major museums, cultural institutions, galleries and other organisers. Meanwhile, the Triennial of Photography has become an important festival of international emission. Besides a great variety of exhibitions under a common motto — highly topical photographic themes are analysed.

Photo: Inkredo Designer/unsplash  
Address: Deichtorhallen, Deichtorstraße 2, Hamburg  
Internet: [www.phototriennale.de/en](http://www.phototriennale.de/en)

### Schlagermove



Hamburg celebrates the Festival of Love: The Number 1 among all European Schlager spectacles, the Hamburg Schlagermove, is a party of superlatives. Anywhere up to half a million Schlager fans dance at the 45 colourfully decorated music trucks. 'If the Sun shines in your heart', you're between Kiez and the harbour.

Photo: Hamburg Tourismus GmbH  
Address: On the streets of Hamburg between

Heiligengeistfeld & St Pauli-landing bridges

Internet: schlagermove.de

### ITU World Triathlon



The world's biggest World Triathlon Championship Series in Hamburg takes place on the picturesque streets of the city. Athletes compete in three disciplines: swimming, cycling and running. Professional and recreational athletes combine the athletic ambition with the special atmosphere around Hamburg which creates a unique experience. Come to cheer the participants or take part yourself.

Photo: Witters GmbH Sportfotografie/Hamburg Tourismus GmbH

Address: Hamburg City Centre

Internet: [hamburg.com/triathlon.org/en](http://hamburg.com/triathlon.org/en)

### Hamburg Pride & Christopher Street Day



The history of the Christopher Street Day in Hamburg goes back more than 40 years. Back in the summer of 1980, it was the first time that lesbians, gays, bisexuals and trans people marched for their rights in the Hanseatic City.

The Hamburg CSD has become a popular people's festival that draws more visitors to the Elbe year after year — everyone is welcome! In 2010 alone, about 100,000 visitors came to the big CSD parade from all over Europe, and visitor numbers are constantly increasing.

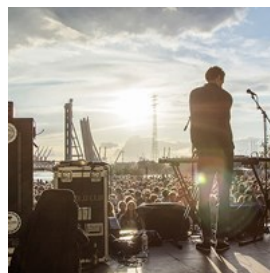
Photo: Hamburg Tourismus GmbH

Address: Jungfernstieg, Hamburg

Opening hours: First weekend of August

Internet: [www.hamburg-pride.de](http://www.hamburg-pride.de)

### MS Dockville — Festival of Music & Art



Dockville, Hamburg's annual festival of music and art is an unprecedented presentation of visual art and musical line-up. The city centre location with its great combination of urban industrial charm and natural elements such as water (Elbe), green meadow and birch groves provide a very unconventional festival feeling. The diverse musical programme is presented on as many as seven stages and venues, bringing together both local and established artists with young and talented artists.

Photo: Hamburg Tourismus GmbH

Address: Schlegendeich 21, Hamburg

Public Transport: Suburban train lines S3 or S31 to Veddel, from there take the regular MS Dockville shuttle buses to festival site.

Opening hours: Takes place in mid-August

Internet:

[www.hamburg.com/events/music/11757476/dockville](http://www.hamburg.com/events/music/11757476/dockville)

### International Summer Festival at Kampnagel



The International Summer Festival Hamburg is held for three weeks in August at Kampnagel and at selected locations in

Hamburg. The main stages are located in the former crane factory with Hamburg's most beautiful temporary beer garden.

Since its founding in the mid-80s it has remained among the largest European festivals for contemporary performance arts from around the world. Every year the festival presents and/or produces more than 50 different works in the

areas of dance, theatre, performance, music, visual arts and film.

Photo: Ahmad Odeh/unsplash

Address: Kampnagel, Jarrestraße 20, Hamburg

Opening hours: Takes place over 3 weeks every August

Phone: +49 40 270 949 49

Internet: [kampnagel.de/en/internationales-sommerfestival](http://kampnagel.de/en/internationales-sommerfestival)

### Hamburg Cyclclassics



For one day the traffic stands still for the two-wheelers, leading the participants along the most beautiful corners of the Hanseatic city and the metropolitan region. The Hamburg Cyclclassics is a professional cycling race of the highest category UCI World Tour in Germany.

Cheering spectators ensure a festive atmosphere along the Elbe and Alster rivers. At the Rathausmarkt and at the Jungfernstieg, a colourful information and supporting program will be offered during the Cyclclassics.

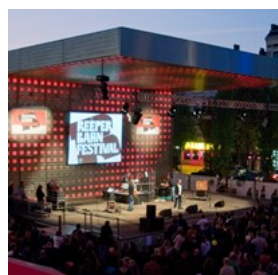
Photo: Witters GmbH Sportfotografie/Hamburg Tourismus GmbH

Opening hours: Takes place in late August

Internet: [www.cyclclassics-hamburg.de/en](http://www.cyclclassics-hamburg.de/en)

Email: [cyclclassichamburg@ironman.com](mailto:cyclclassichamburg@ironman.com)

### Reeperbahn Festival



The Reeperbahn Festival is Germany's largest club festival and is one of the three most important meeting places for the music and digital industries in Europe. The festival offers around 600 diverse events in more than 70 venues on and around Hamburg's Reeperbahn — including

concerts by international newcomers, an extensive arts programme, and a business platform and conference for companies and organisations.

Photo: Hamburg Tourismus GmbH

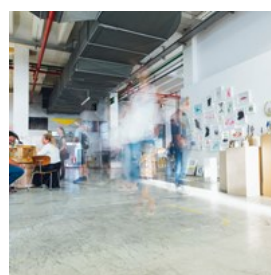
Address: Reeperbahn & surrounding streets

Public Transport: Subway S3, exit Reeperbahn

Opening hours: Takes place around the 3rd week of September

Internet: [www.reeperbahnfestival.com/en](http://www.reeperbahnfestival.com/en)

### Affordable Art Fair



The Affordable Art Fair Hamburg features 80 local, national, and international galleries showcasing a vast array of contemporary art.

Discover fresh new talents alongside well-known names, with the curated Emerging Artist Exhibition making it easy to spot the up-and-coming stars of the future.

Photo: Markus Spiske/unsplash.com

Address: Hamburg Messe & Congress Center, Hamburg

Public Transport: Entrance East: S11, S21, S31 to Bahnhof Dammtor or U1 to Stephansplatz; Entrance West: S11, S21,

S31, U3 to Sternschanze; Entrance South: U2 to Messehallen

Opening hours: One weekend in mid-November

Phone: +49 40 533 070 510

Internet: [affordableartfair.com/fairs/hamburg](http://affordableartfair.com/fairs/hamburg)

Email: [anfragen@affordableartfair.de](mailto:anfragen@affordableartfair.de)

### Hamburg Cruise Days



Three days full of maritime mood, sensual pleasures and entertainment — many large cruise ships are calling at Hamburg

during the Hamburg Cruise Days. During these days the harbour is a world of experience and invites its visitors to explore maritime markets,

shopping, fashion, design, sports and relaxation, activities for children, music, entertainment and culinary delights prepared by top restaurateurs in town.

Photo: Christian Spahrbier/Hamburg Tourismus GmbH  
Address: HafenCity Hamburg  
Public Transport: Subway U3, exit Baumwall; Subway U4, exit Überseequartier  
Internet: [www.hamburgcruisedays.de/en](http://www.hamburgcruisedays.de/en)

### Hamburg Theatre Night



When nights are still mild and yet getting incrementally longer, residents and guests alike enjoy the Hamburg Theatre Night, taking place each year in September. With a ticket covering bus, train and Alster barge fares, you can embark on a fascinating journey through countless theatre, opera, ballet, cabaret and comedy performances. All those who can retain their energy until the early morning hours can enjoy a drink or two in the legendary St Pauli district, where the long theatre night ends with a big party.

Photo: Schauspielhaus/Hamburg Tourismus GmbH  
Opening hours: Takes place every September  
Internet:  
[www.hamburg.com/events/culture/11751078/theatre-night](http://www.hamburg.com/events/culture/11751078/theatre-night)  
Email: [info@theater-hamburg.org](mailto:info@theater-hamburg.org)

### Laeiszhalle Music Hall



The magnificent, neo-baroque structure of the Laeiszhalle provides a wonderful ambience for an unforgettable evening of classical music, not to mention the jazz, pop and children's concerts. The Laeiszhalle Hamburg has had its role to play

in musical history right from the very beginning: Prominent artists such as Richard Strauss, Sergei Prokofiev, Igor Stravinsky and Paul Hindemith all performed and conducted their own works here. Today, the Laeiszhalle continues to welcome stars from the international music scene, and at the same time it is a meeting place for Hamburg's musical life.

Photo: Hamburg Tourismus GmbH  
Address: Laeiszhalle, Johannes-Brahms-Platz, Hamburg  
Public Transport: Subway U3, exit Messehallen  
Internet: [www.elbphilharmonie.de/en/laeiszhalle](http://www.elbphilharmonie.de/en/laeiszhalle)

### Thalia Theater



Thalia Theater is located in the heart of Hamburg between the Inner Alster and Mönckebergstraße, and it is one of the greatest artistic successes of a state-run German theatre. The repertoire combines new performances, classics and exciting projects by international artists. The decisive staging is complemented by a strong, highly acclaimed ensemble.

Photo: Hamburg Tourismus GmbH  
Address: Alstertor 1, Hamburg  
Phone: +49 40 328 14444  
Internet: [www.thalia-theater.de/en](http://www.thalia-theater.de/en)

### Hamburger Dom



Hamburger Dom is the biggest public festival in the north of Germany. Experience nostalgic carousels and high-tech rides, accompanied with a good variety of tasty food and drinks.

The festival takes place three times a year: in springtime between March and April, in

summertime between July and August, and in wintertime between November and December.

Photo: Hamburg Tourismus GmbH

Address: Heiligengeistfeld, Hamburg

Public Transport: U3 St. Pauli or Feldstraße

Internet: [www.hamburg.de/dom](http://www.hamburg.de/dom)

### The Lion King



For many people the fascinating Lion King adventure in Hamburg starts as soon as the transfer starts from the landing stages to the

Theater im Hafen on the other side of the Elbe. The combination of authentic sounds, fantastic costumes and the emotional songs by Elton John and Tim Rice bring the atmosphere of the Serengeti to life when the young lion Simba has to find his way in the savannah and take his place as king.

Photo: Hamburg Tourismus GmbH

Address: Stage Theater im Hafen, Norderelbstraße 6, Hamburg

Internet: [www.stage-entertainment.de/musicals-shows/disney-s-der-koenig-der-loewen-hamburg](http://www.stage-entertainment.de/musicals-shows/disney-s-der-koenig-der-loewen-hamburg)

### Historic Christmas Market on Rathausmarkt



Woodcarvers from the Tyrol, gingerbread bakers from Aachen and Nuremberg, ceramics from Lausitz, silversmiths and many others welcome

you to marvel, participate, taste and enjoy.

Every year at Christmas time, against the impressive backdrop of the venerable, historic Town Hall of the Free and the Hanseatic City of Hamburg, approximately eighty traders arrive for one of the city's largest and loveliest

Christmas markets.

The lovingly designed market architecture by Roncalli director Bernhard Paul makes the Christmas market stand out from the conventional pre-Christmas events in other cities. A particular point of attraction is the Spielzeuggasse (toy street). This is where merchants from around the world offer toys that make not only children's hearts beat faster.

Photo: Jörg Modrow/Hamburg Tourismus GmbH

Address: City Hall Christmas Market, Hamburg

Public Transport: U3 Rathaus, U1/2/3 Jungfernstieg

Opening hours: From late November until Christmas

Internet:

[www.hamburg.com/events/christmas/11872776/city-hall](http://www.hamburg.com/events/christmas/11872776/city-hall)

### Santa Pauli – Christmas in the Kiez



At Hamburg's naughtiest Christmas market, it's not only the mulled wine that gets the visitors hot. Live music, a fireplace lounge on the winter deck and a

strip tent are a temptation to naughty and frivolous merriment on a Christmas market stroll on Spielbudenplatz. The market stays open late into the night, in keeping with its special location on the Reeperbahn.

The most unbridled Christmas market of the lovely Hanseatic city not only guarantees conventional Christmas market stands, but also offers an open-air art gallery and Sunday children's programme — fun for young and old alike. For those who fancy mulled wine, the Winterdeck is the place to be. The cosy bar with a blazing fireplace provides visitors with the Christmas drinks they desire. The over-18s fir forest, set up in the manner of the Reeperbahn, offers strip shows as well as frivolous and

crackling erotic readings.

Photo: Geheimtipp Hamburg/Hamburg Tourismus GmbH  
Address: Spielbudenplatz, Hamburg  
Opening hours: From late November until Christmas  
Internet:  
[www.hamburg.com/events/christmas/11872938/santa-pauli](http://www.hamburg.com/events/christmas/11872938/santa-pauli)

### White Magic on Jungfernstieg



The entire market is dazzling with Christmas lights. Its themes, the colour of the lights and luminosity match the contemporary architectural language of the location.

The appearance of the Christmas market blends in harmoniously with the ambience around Hamburg's newly designed luxury boulevard with the local hotels, businesses, the Alsterhaus and other exclusive boutiques. A lovely Christmas market for atmospheric hours.

Photo: Christian Ohde/Hamburg Tourismus GmbH  
Address: "Weißer Zauber" (White Magic), Jungfernstieg  
Internet: [www.hamburg-travel.com/see-explore/events/christmas-market-on-jungfernstieg](http://www.hamburg-travel.com/see-explore/events/christmas-market-on-jungfernstieg)

### Fleetinsel Christmas Market



Between Stadthausbrücke and Rödingsmarkt is a clever mixture of Hanseatic tradition and a modern attitude to life. The proximity to the harbour and the direct connection to the Alster lend the Fleet Christmas market a very special maritime atmosphere.

The delicious Christmas specialities or a contemplative glass of mulled wine with friends or family can help you forget the hustle and

bustle of the pre-Christmas season — in the peaceful tranquillity of a renovated square, without the street noise and glaring lights. Stands with gift items are also an invitation to take a stroll. Meanwhile, the younger visitors can have fun on the children's carousel.

Photo: Christian O. Bruch/Hamburg Tourismus GmbH  
Address: Heiligengeistbrücke, Hamburg  
Internet: [www.hamburg-travel.com/see-explore/events/christmas-market-on-the-fleetinsel](http://www.hamburg-travel.com/see-explore/events/christmas-market-on-the-fleetinsel)

### New Year's Eve at the Waterfront



Fireworks are great, but you know what is even greater — fireworks reflected in the water. You get double the visual punch, a huge variety of delicacies served from street food stalls, plus the jubilant holiday cheers from the celebrating crowds.

The fireworks close to the Landungsbrücken are supported acoustically with the signal horns of all ships in the harbour.

For a quieter atmosphere with less hustle and bustle head to the Alster. The inhabitants of Hamburg lighten up their own fireworks around the Inner and Outer Alster lakes.

Another option for the turn of the year is a harbour tour which provides the perfect view over the fireworks from the waterfront.

Photo: Christian Spahrbier/Hamburg Tourism GmbH  
Internet:  
[www.hamburg.com/events/culture/11751090/new-years-eve](http://www.hamburg.com/events/culture/11751090/new-years-eve)

## DINING



Hamburg Tourismus GmbH

Hamburg is lauded as one of Germany's top cities for seafood. Early in the morning, fishing boats arrive in the harbour with the previous night's catch. Fresh whole fish, hearty stews, ethnic cuisine, and traditional German dishes like 'Birnen, Bohnen und Speck' — pears, beans, and bacon — are culinary experiences not to be missed.

### Hard Rock Cafe Hamburg



In a city that hosted the early gigs of Liverpool's original 'Fab Four', Hamburg once again claims its rock residency with the Hard Rock Cafe

Hamburg. Situated near the banks of the Elbe River in one of the city's most historic buildings, the Landungsbrücken, it shares the port with local landmarks like the Old Elbe Tunnel, the Old Warehouse District, and the Harbor City. Hard Rock Cafe Hamburg is a must-visit destination.

Photo: Hamburg Tourismus GmbH

Address: Next to St. Pauli-Landungsbrücken 5, Hamburg

Opening hours: Daily 11:30am-11pm

Phone: +49 40 300 684 80

Internet: [cafe.hardrock.com/hamburg](http://cafe.hardrock.com/hamburg)

### Restaurant Haerlin



Hamburg boasts several restaurants with one Michelin star, but Christoph Ruffer's establishment stands out with a second star. The chef and his team craft modern and creative menus rooted in classic French gourmet cuisine at the prestigious Fairmont Hotel Vier Jahreszeiten. Seasonal ingredients fresh from the market ensure the highest quality of food. The ambiance is elegantly understated, and the service impresses with its perfect balance of subtlety and attentiveness.

Photo: Fairmont Hotel Vier Jahreszeiten/Hamburg Tourismus GmbH

Address: Fairmont Hotel Vier Jahreszeiten, Neuer Jungfernstieg 9-14, Hamburg

Phone: +49 40 34 94 33 10

Internet: [restaurant-haerlin.de/en](http://restaurant-haerlin.de/en)

Email: [hamburg@fairmont.com](mailto:hamburg@fairmont.com)

### The Table



The Table, operated by Germany's youngest recipient of three Michelin stars, Kevin Fehling, captivates with its modern interior and unique culinary experiences. Situated in the heart of HafenCity, the restaurant showcases some extraordinary design choices. Notably, there is just one single, large cherry wood table, seating up to 20 guests. From here, diners have the opportunity to view the open kitchen and watch the preparation of exclusive dishes.

Photo: The Table\_HHT/Hamburg Tourismus GmbH

Address: Shanghaiallee 15, Hamburg

Opening hours: Tue-Sat from 7pm, Sun & Mon closed

Phone: +49 40 228 674 22

Internet: [thetable-hamburg.de](http://thetable-hamburg.de)

### Bullerei



TV chef Tim Mälzer's restaurant is a crowd-pleaser. To snag a table, it's wise to book ahead. The grill's offerings, particularly the Argentine fillet steak, are impeccable and cooked to perfection. If you're indecisive, opt for a surprise menu with three or four courses. Rest assured, it's bound to be delightful.

Photo: Bullerei/Hamburg Tourismus GmbH

Address: Lagerstraße 34b, Hamburg

Opening hours: Daily from noon

Phone: +49 40 33 44 21 10

Internet: [bullerei.com](http://bullerei.com)

Email: [info@bullerei.com](mailto:info@bullerei.com)

### Fischereihafen



Located at the Dockland pier, with harbour scenes adorning the walls and views from the window looking directly onto the water, this restaurant's focus is clear: fish. And for over sixty years, it's been prepared here in every conceivable variation, always freshly caught. In summer, visit the balcony for a beautiful view of the Elbe.

Photo: Hamburg Tourismus GmbH

Address: Große Elbstraße 143, Hamburg

Opening hours: Daily noon-11pm

Phone: +49 40 38 18 16

Internet: [www.fischereihafenrestaurant.de](http://www.fischereihafenrestaurant.de)

Email: [reservierung@fischereihafenrestaurant.de](mailto:reservierung@fischereihafenrestaurant.de)

### BLOCKBRÄU



BLOCKBRÄU Brewery is located right in the heart of Hamburg's harbour. This successful restaurant chain belongs to Eugen Block, a star in Germany's gastronomy firmament. There, you can enjoy freshly brewed beer along with complementary dishes straight from the brewery's kitchen. The large terrace offers a beautiful view over the bustling harbour activity.

Photo: Hamburg Tourismus GmbH

Address: Landungsbrücken 3, Hamburg

Opening hours: November through March: daily

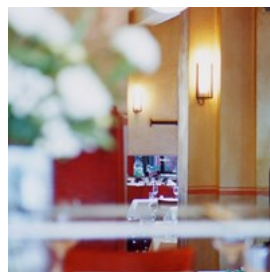
11:30am-11pm; April through October: daily 11am-midnight

Phone: +49 40 44 40 500

Internet: [www.block-braeu.de](http://www.block-braeu.de)

Email: [reservierung@block-braeu.de](mailto:reservierung@block-braeu.de)

### Cox



Cox is a charming establishment, captivating with its exceptionally charming bistro style. The atmosphere is always cosy, despite the bustling activity. This is primarily due to the excellent cuisine. Regional dishes are reinterpreted in a modern style, with no shortage of fish and meat dishes.

Try and visit Cox later in the evening. At that time, the restaurant is pleasantly empty and the kitchen is even open until just before midnight, which is very accommodating to theatre-goers or visitors to the State Opera who would still like a meal after the performance.

Photo: Hamburg Tourismus GmbH

Address: Lange Reihe 68, Hamburg

Opening hours: Kitchen open Tue-Fri noon-2:30pm /

6pm-10:30pm; Sat 6pm-10:30pm; Sun & Mon closed  
Phone: +49 40 24 94 22  
Internet: [www.restaurant-cox.de](http://www.restaurant-cox.de)  
Email: [info@restaurant-cox.de](mailto:info@restaurant-cox.de)

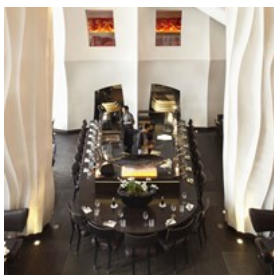
### Zipang



Far from the typical menus found at Japanese restaurants in Germany, Zipang embraces its own 'Fusion-Style' to create novel dishes. The Iberian pork roulade with shiso herbs and a shibazuke sauce is just as intriguing as the crème brûlée made from Japanese green tea and mascarpone, served with a sorbet of seasonal fruits.

Photo: Hamburg Tourismus GmbH  
Address: Eppendorfer Weg 171, Elmsbüttel, Hamburg  
Opening hours: Tue-Sat noon-2pm / 6:30pm-9:30pm; Sun & Mon closed  
Phone: +49 40 432 800 32  
Internet: [www.zipang.de](http://www.zipang.de)  
Email: [info@zipang.de](mailto:info@zipang.de)

### East Restaurant



The restaurant in the stylish East Hotel offers excellent Asian and European cuisine, just a stone's throw from Hamburg's entertainment district. Top chefs regularly create new and extraordinary dishes here. The menu features sushi and sashimi, as well as international meat- and fish-based main courses.

Photo: East Restaurant/Hamburg Tourismus GmbH  
Address: Simon-von-Utrecht-Straße 31, Hamburg  
Public Transport: U3 St. Pauli  
Opening hours: Daily 5pm-10pm  
Phone: + 49 40 30 99 33  
Internet: [www.east-hamburg.de/en/restaurant](http://www.east-hamburg.de/en/restaurant)  
Email: [info@east-hamburg.de](mailto:info@east-hamburg.de)

### Jacobs



Chef Thomas Martin crafts seasonal menus that showcase a light and fresh style, elegant without being showy. A cooking class is available for a deeper dive into the preparation of these culinary delights. On pleasant days, you can dine outdoors in the shade of the old lime trees.

Photo: ©Louis C. Jacob\_HHT/Hamburg Tourismus GmbH  
Address: Hotel Louis C. Jacob, Elbchaussee 401, Hamburg  
Phone: +49 40 82255406  
Internet: [www.hotel-jacob.de/en/restaurants](http://www.hotel-jacob.de/en/restaurants)

### Carls at the Elbphilharmonie



This piece of France is situated in a dreamy location right next to Hamburg's new landmark and boasts three distinct dining areas: Brasserie, Bistro, and Weinbar. Enjoy creative meat and fish dishes, complemented by a robust wine list.

Photo: Hamburg Tourismus GmbH  
Address: Am Kaiserkai 69, Hamburg  
Phone: +49 40 300 322 400  
Internet: [carls-brasserie.de](http://carls-brasserie.de)  
Email: [carls@carls-brasserie.de](mailto:carls@carls-brasserie.de)

### Ristorante Portonovo



Portonovo presents authentic Italian cuisine in a lively and welcoming atmosphere. Situated beside the Outer Alster lake, the restaurant offers striking vistas. The dishes are expertly prepared with a contemporary flair, fully embracing the use of fresh, seasonal ingredients.

Photo: Sebastian Coman Photography/unsplash  
Address: Alsterufer 2, Hamburg  
Opening hours: April through September: Mon-Sat noon-10:30pm, Sun noon-10pm. October through March: Mon-Fri noon-3pm / 6pm-10:30pm; Sat noon-10:30pm; Sun noon-10pm.  
Phone: +49 40 41 35 66 16  
Internet: [www.ristorante-portonovo.de](http://www.ristorante-portonovo.de)  
Email: [info@ristorante-portonovo.de](mailto:info@ristorante-portonovo.de)

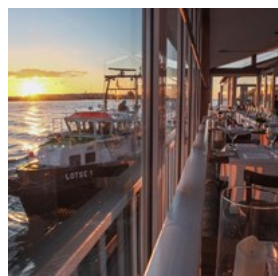
### Gröninger Privatbrauerei



Gröninger Privatbrauerei is one of Hamburg's oldest breweries. This is where Gröninger Pils is brewed, which can then be self-tapped and enjoyed from old wooden barrels in the brew cellar or brewery. The atmosphere in the historic surroundings dating back to 1722 is unique. Don't miss the chance to experience Gröninger with friends.

Photo: Hamburg Tourismus GmbH  
Address: Willy-Brandt-Straße 47, Hamburg  
Opening hours: Tue-Sat from 4pm, Sun & Mon closed  
Phone: +49 40 570 105 100  
Internet: [www.groeninger-hamburg.de](http://www.groeninger-hamburg.de)  
Email: [info@groeninger-hamburg.de](mailto:info@groeninger-hamburg.de)

### Engel



The gourmet restaurant stands out with its exceptional location on a former viewing platform, alongside the Elbe. But head chef Tarik Rose understands that ambiance alone isn't enough. He excels in the kitchen by giving classic dishes a modern twist, all while paying homage to French culinary art.

Photo: ©Engel\_HHT/Hamburg Tourismus GmbH  
Address: Fähranleger Teufelsbrück, Teufelsbrück, Hamburg

Opening hours: Mon-Fri 3pm-11pm, Sat & Sun 1pm-11pm  
Phone: +49 40 82 41 87  
Internet: [www.restaurant-engel.de](http://www.restaurant-engel.de)

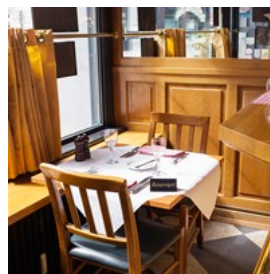
### El Tequito



For over 20 years, El Tequito has been located at the St. Pauli Fish Market. Here, the highlights of Mexican, American and Creole cuisine are crafted into distinctive dishes. Pair your dinner with a delicious cocktail in the lounge before a stroll through the district.

Photo: Hamburg Tourismus GmbH  
Address: St. Pauli-Fischmarkt 3, Hamburg  
Opening hours: Mon-Thu 5pm-11pm, Fri-Sun 4pm-midnight  
Phone: +49 40 319 32 78  
Internet: [eltequito.de](http://eltequito.de)  
Email: [info@eltequito.de](mailto:info@eltequito.de)

### Le Plat du Jour



Le Plat du Jour is a hidden gem close to the city hall. Right in the heart of the city centre, yet almost free of tourists. It's tucked away on Dornbusch, a tiny street just a six-minute walk southeast of Rathausmarkt. This is where the wealthier ladies and gentlemen from publishing houses and law firms spend their lunch break, but the restaurant is also well frequented in the evenings.

Photo: ©\_Le Plat du Jour\_HHT/Hamburg Tourismus GmbH  
Address: Dornbusch 4, Hamburg  
Opening hours: Daily noon-10pm  
Phone: +49 40 32 14 14  
Internet: [www.le-plat-du-jour.de](http://www.le-plat-du-jour.de)

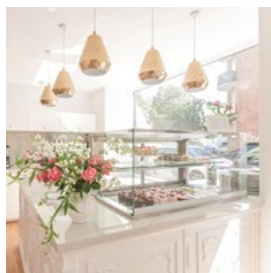
## CAFÉS



Hamburg Tourismus GmbH

On warm summer evenings, visitors and locals alike gather at cafés in historic spots, the modern city centre, or along the river as boats glide by. Opt for home-baked bread, pastries, or cocktails.

## Zuckermonarchie



Zuckermonarchie, the self-proclaimed 'kingdom of sweetness', is a haven for all things sugary. It offers an array of treats that go beyond your wildest dreams. Whether it's breakfast, lunch, cake, or afternoon tea, this sweet sanctuary always has something to surprise and delight. If you feel like trying your hand in the art of pastry making, Zuckermonarchie offers courses in cupcake baking.

Photo: Felix Matthies/Hamburg Tourismus GmbH

Address: Taubenstraße 15, Hamburg

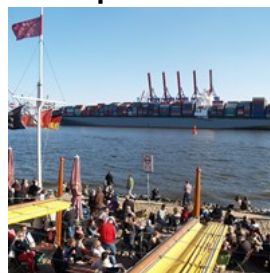
Opening hours: Tue-Fri noon-6pm, Sat & Sun 10am-6pm,  
Mon closed

Phone: +49 40 38 63 06 82

Internet: [www.zuckermonarchie.de](http://www.zuckermonarchie.de)

Email: [info@zuckermonarchie.de](mailto:info@zuckermonarchie.de)

## Strandperle



Ottensen Beach, directly accessible via a HADAG ferry, is arguably one of the most picturesque spots along the Hamburg Elbe. You don't need to wear shoes to grab a cola, coffee, salad, or cheese platter. Situated just metres from the Elbe's tranquil waters, Strandperle is a magnet for beachgoers.

Photo: Strandperle Hamburg/Hamburg Tourismus GmbH

Address: Övelgönne 60, Hamburg

Public Transport: HVV Ferry 62 to Museumshafen Övelgönne

Opening hours: Open from noon when the weather is good

Internet: [www.strandperle-hamburg.de](http://www.strandperle-hamburg.de)

Email: [info@strandperle-hamburg.de](mailto:info@strandperle-hamburg.de)

## Alex



Situated directly on the Inner Alster Lake, Alex finds its home in the historic Alsterpavillon. Throughout its history, the building has been a host to various cafés. Today, the venue features an outdoor terrace and serves a selection of snacks alongside coffee and cakes.

Photo: Christian Spahrbier/Hamburg Tourismus GmbH

Address: Jungfernstieg 54, Hamburg

Opening hours: Mon-Thu 8am-1am, Fri & Sat 8am-2am, Sun  
9am-1am

Phone: +49 40 350 18 70

Internet: [www.dein-alex.de/hamburg-im-alsterpavillon](http://www.dein-alex.de/hamburg-im-alsterpavillon)

Email: [alex-hamburg@dein-alex.de](mailto:alex-hamburg@dein-alex.de)

### Café Paris



Café Paris, a tribute to the typical French café of the turn of the century, is situated near City Hall. Its stunning, white-tiled room with an Art

Nouveau ceiling depicting industry and agriculture scenes buzzes with activity. Stop by in the morning for buttery croissants, come around in the afternoon for excellent lunch specials, or visit Paris as the darkness falls over the city for classic evening service.

Photo: Hamburg Tourismus GmbH

Address: Rathausstraße 4, Hamburg

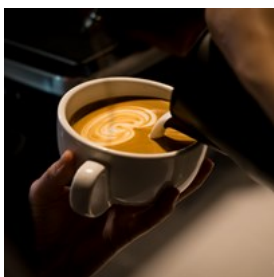
Opening hours: Mon-Sat 9am-midnight, Sun 9:30am-11pm

Phone: +49 40 32 52 77 77

Internet: [cafeparis.net](http://cafeparis.net)

Email: [info@cafeparis.net](mailto:info@cafeparis.net)

### Public Coffee Roasters



Public Coffee Roasters is driven by a deep passion for coffee beans and roasting, represented by a young and trendy team. As coffee enthusiasts

enter the shop café in Neustadt, their senses confirm they've made the right choice.

Conversations typically focus on the beans' origins, their outstanding quality, and the careful roasting process that occurs in-house, all while hand-brewed coffee specialities are being crafted.

Photo: Jayden Sim/unsplash

Address: Wexstraße 28, Hamburg

Opening hours: Mon-Fri 8:30am-6pm, Sat 10am-5:30pm,

Sun closed

Phone: +49 176 93 17 15 80

Internet: [publiccoffeeroasters.com](http://publiccoffeeroasters.com)

Email: [order@publiccoffeeroasters.com](mailto:order@publiccoffeeroasters.com)

### Ahoi Strandkiosk



The beach by Ahoi Strandkiosk invites visitors of all ages to enjoy Hamburg's most beautiful sunsets with a hot cocoa, a refreshing

beer or a cool glass of wine. If you're feeling peckish, Ahoi offers a variety of options, from light organic snacks and hearty home-cooked dishes to tempting desserts.

The Strandkiosk's building was originally constructed in 1900 for a wedding. Later, it served as a sail loft and then as housing for carpenters.

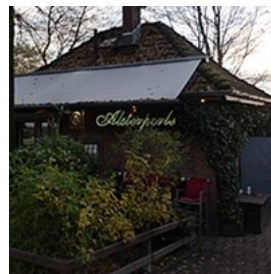
Photo: Hamburg Tourismus GmbH

Address: Övelgönne 57, Hamburg

Opening hours: Daily 8am-6pm

Phone: +49 40 881 568 06

### Alsterperle



Alsterperle is the counterpart to Strandperle in Övelgönne. Located at the easternmost side of the Outer Alster, it offers

outstanding snack-bar fare at fair prices. What truly distinguishes this outdoor spot, however, is its remarkable location and the expansive view it provides: Here, the Alster Lake reaches its widest expanse. Looking towards the south, you can see the skyline of central Hamburg.

Photo: Hamburg Tourismus GmbH

Address: Eduard-Rhein-Ufer 1, Hamburg

Opening hours: Daily 8am-9pm, and even later in the summer

Phone: +49 40 22 74 82 73

Internet: [www.alsterperle.com](http://www.alsterperle.com)

## Lühmanns Teestube



Lühmann's Teestube stands out with its vintage furniture, diverse hot and cold menu, and the unique option to book a bed right there. The proprietors' love for England is evident in delightful details like cream tea with crumbly scones. Whether you fancy a warm morning meal or evening breakfast, Lühmann's Teestube caters to all desires. Don't miss out on the cake and the sumptuous Sunday breakfast buffet — the perfect prelude to a leisurely walk through the charming Blankenese.

Photo: Priscilla Du Preez/unsplash

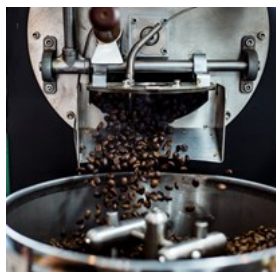
Address: Blankeneser Landstraße 29, Hamburg

Phone: +49 40 86 34 42

Internet: [www.luehmanns-teestube.de](http://www.luehmanns-teestube.de)

Email: [info@luehmanns-teestube.de](mailto:info@luehmanns-teestube.de)

## Elbgold Roastery



Coffee roasting is a unique blend of science and art, and it's being perfected daily at Elbgold. This Hamburg institution is dedicated to sourcing the world's finest beans and then refining them on-site, guided by its own vision of what good coffee should taste like. The roastery in Schanzenviertel also hosts one of Elbgold's cafés, where you can enjoy baguettes, bagels, and cakes alongside freshly brewed coffee.

Photo: Gregory Hayes/unsplash

Address: Lagerstraße 34c, Hamburg

Opening hours: Mon-Fri 7am-7pm, Sat 9am-7pm, Sun 10am-7pm

Phone: +49 40 23 51 75 20

Internet: [www.elbgoldshop.com](http://www.elbgoldshop.com)

Email: [info@elbgold.com](mailto:info@elbgold.com)

More Info: Elbgold has four locations in Hamburg

## Café Geyer



For two decades, Café Geyer has been delighting locals and visitors alike with delicious coffee and homemade cake in the serene setting of Hein-Köllisch-Platz. A variety of breakfast choices are on offer each day, along with a budget-friendly lunch menu featuring a rotation of dishes. As evening falls, Café Geyer becomes the perfect spot to relax with a long drink or cocktail.

Photo: Hamburg Tourismus GmbH

Address: Hein-Köllisch-Platz 4, Hamburg

Opening hours: Mon-Sat 10am-11pm, Sun 9:30am-10pm

Phone: +49 40 49 20 40 51

Internet: [www.instagram.com/cafegeyer](http://www.instagram.com/cafegeyer)

## Literaturhauscafé



The Literaturhauscafé offers a refined coffee experience with a traditional touch. Guests can indulge in a range of culinary delights, including various breakfast options, lunch, sweets from the in-house pastry shop, and dinner. True to its name, the café frequently hosts readings. Additionally, it boasts seating with splendid views of the Alster, as well as the ornate Rosensalon, adorned with intricate stucco.

Photo: Ibrahim Boran/unsplash

Address: Schawanewik 38, Hamburg

Opening hours: Wed-Sun 9:30am-6pm, Mon & Tue closed

Phone: +49 40 22 01 300

Internet: [www.literaturhauscafe.de](http://www.literaturhauscafe.de)

Email: [hallo@literaturhauscafe.de](mailto:hallo@literaturhauscafe.de)

### Due Baristi Espresso Bar



There's always something going on at Due Baristi. No wonder, because the small café is considered one of the best places in Germany when it comes to coffee. Preparing coffee is both an art and a craft that requires constant practice. Nobody in Hamburg knows this better than Eckhart Meyer and his partner Sener Sönmez. Together, they form the eponymous 'Due Baristi' — two professionals at the machine and chefs of this charming café in the heart of Eimsbüttel.

Photo: Blake Richard Verdoorn/unsplash

Address: Langenfelder Damm 2-4, Hamburg

Opening hours: Mon-Fri 8am-5pm, Sat 9am-5pm, Sun 10am-5pm

Phone: +49 40 88 17 88 50

Internet: [www.leserattenshop.de](http://www.leserattenshop.de)

Email: [info@duebaristi.de](mailto:info@duebaristi.de)

### Stockholm Espresso Club



Contrary to what its name suggests, the Stockholm Espresso Club is situated in the Winterhude residential district of Hamburg, not the Swedish capital. The coffee on offer is sourced from the Swedish roastery KOPPI, known for its light roast of hand-picked coffee varieties from around the globe, procured through direct contact with the producers.

Photo: Daniel Masajada/unsplash

Address: Peter-Marquard-Straße 8, Hamburg

Public Transport: Bus 6 or 25 till Gertigstraße or Goldbekplatz

Opening hours: Mon & Wed-Fri 9am-7pm; Sat & Sun 10am-6pm; Tue closed

Phone: +49 40 22 66 05 05

Internet: [www.stockholmcoffeeroasters.com](http://www.stockholmcoffeeroasters.com)

### Café Johanna



If you've taken a harbour tour or strolled through the Elbe Tunnel and need a break from the tourist trail, just climb Venusberg and pause at Café Johanna. Nestled in a quiet residential area between the Landungsbrücken and St Michael's Church, it offers relaxed hospitality from morning till early evening.

Breakfast at Café Johanna is particularly popular. Alongside coffee and tea, juices and lemonades, a variety of cold and hot dishes are served. There's a selection of sandwiches, ciabatta, and cakes in a glass vitrine, but you can also order à la carte. Try the lentil soup, savoury crêpes, pita bread, salads, and quiches.

Photo: Café Johanna\_HHT/Hamburg Tourismus GmbH

Address: Venusberg 26, Hamburg

Opening hours: Tue-Fri 9am-3pm, Sat & Sun 10am-5pm, Mon closed

Phone: +49 40 38 64 52 78

Internet: [www.cafejohanna.de](http://www.cafejohanna.de)

### Karlsons



Embracing the fitting motto 'A Piece of Scandinavia in Hamburg', Karlsons offers fresh, homemade dishes from Denmark and Sweden. Try their Köttbullar or Norwegian apple pancakes. Additionally, you can purchase Swedish treats, Danish design objects, and Astrid Lindgren merchandise in the in-house shop.

Photo: Karlsons\_HHT/Hamburg Tourismus GmbH

Address: Alter Steinweg 10, Hamburg

Opening hours: Mon-Fri 9am-4pm, Sat & Sun 10am-6pm

Phone: +49 40 5259 8233

Internet: [www.karlsons.de](http://www.karlsons.de)

### Café Gnosa



This gem of Hamburg's coffee house culture is a must-visit for its beautiful ambiance, excellent coffee, and ever-changing exhibitions. Café Gnosa

has been renowned for decades for its outstanding cakes. A visit to Gnosa is worthwhile at any time of day: the breakfast menu is extensive, offering all the classics, and the lunch is both delicious and affordable.

Photo: Hamburg Tourismus GmbH

Address: Lange Reihe 93, Hamburg

Opening hours: Daily 10am-11pm

Phone: +49 40 24 30 34

Internet: [www.instagram.com/cafe\\_gnosa](http://www.instagram.com/cafe_gnosa)

### BioKonditorei Eichel



At the organic patisserie BioKonditorei Eichel you will find a wide range of unique treats like pear-cinnamon-quark cake, apple cake with blackcurrants or buckwheat-carrot cake and dark, delicious chocolate-spelt pancakes.

Christof Eichel, owner and head pastry chef is a man with clear principles: he uses only organic ingredients and does without unnecessary additives which would artificially accelerate the production process of his cakes and gateaux.

Photo: Biokonditorei Eichel\_HHT/Hamburg Tourismus GmbH

Address: Osterstraße 15, Hamburg

Opening hours: Tue-Sun 11:30am-6pm, Mon closed

Phone: +49 40 431 931 51

Internet: [www.biokonditorei-eichel.de](http://www.biokonditorei-eichel.de)

Email: [info@biokonditorei-eichel.de](mailto:info@biokonditorei-eichel.de)

### Manufact Coffee Roasters



Coffee trends may come and go: the once-popular latte macchiato has lost its appeal, while today's connoisseurs favour porcelain filters, manual

infusion, or even the intricate cold-drip brewing method. However, there are many other ways to prepare coffee, such as the Karlsbader Kanne, the Napoletana, or the classic French press. If you're interested in learning more about these and other coffee-making techniques, or if you'd like to taste the difference, Manufact Coffee Roasters, located near Sternschanze, is the place to be.

Photo: ©\_LessPolitical\_HHT

Address: Sternstraße 68, Hamburg

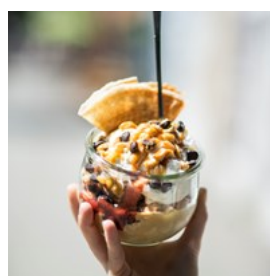
Opening hours: Mon-Fri 8:30am-5pm, Sat & Sun 10am-6pm

Phone: +49 40 33 98 82 98

Internet: [www.instagram.com/manufact\\_coffeeroasters](http://www.instagram.com/manufact_coffeeroasters)

More Info: Previously known as Hermetic Coffee Roasters.

### Luicella's Ice Cream



Let's be honest: is there anything more delightful than enjoying a cool ice cream in the sun on a warm summer day? The duo behind Luicella's Ice

Cream turned their dream into reality in 2013 with their own parlour in St Pauli, and they've recently expanded with a new outlet on Lange Reihe. Here, you're treated daily to sinfully tasty and utterly unique ice cream flavours.

Photo: Luicella\_HHT/Hamburg Tourismus GmbH

Address: Lange Reihe 113, Hamburg

Opening hours: Mon-Thu 12:30pm-6pm, Fri 2:30pm-6pm,

Sat & Sun noon-6pm

Internet: [luicellas.de](http://luicellas.de)

Email: [moin@luicellas.de](mailto:moin@luicellas.de)

## Witthüs



Witthüs enjoys fame well beyond Hamburg's borders. Nestled in the Hirschpark in Blankenese, a stone's throw from the Elbe and within one of the largest English gardens, it offers a serene setting. Guests are treated to cosy coffee hours featuring homemade cake and the iconic 'Jellyfish on Sand'. On Sundays, an exceptional brunch is served, so it's wise to book a table ahead of time. In the evenings the Witthüs transforms into a cosy restaurant.

Photo: Witthues Hamburg/Hamburg Tourismus GmbH  
Address: Hirschpark, Elbchaussee 499a, Hamburg  
Opening hours: Tue-Sat 12:30pm-5pm / 6pm-10:30pm; Sun 10:30am-5pm; Mon closed  
Phone: +49 40 86 01 73  
Internet: [www.witthues.de](http://www.witthues.de)  
Email: [info@witthues.de](mailto:info@witthues.de)

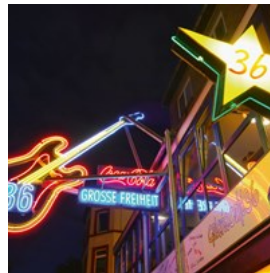
## BARS & NIGHTLIFE



Hamburg Tourismus GmbH

The bars and clubs are open until 4 in the morning on weekdays and even longer on weekends. The best discos are located in the famous Reeperbahn district, where many of the bars can also be found.

## Große Freiheit 36



Grosse Freiheit 36 is actually made up of three venues. The big concerts and parties take place in the main hall. In the Kaiserkeller, legendary because of the Beatles' performances in the 1960s, small bands regularly take the stage and music fans dance to rock, metal and gothic sounds during the week. The atmosphere in Galerie 36 is quite different: there, people sway to Latin and reggae music every Friday and Saturday evening.

Photo: Hamburg Tourismus GmbH  
Address: Große Freiheit 36, Hamburg  
Phone: +49 40 31 77 78 10  
Internet: [docksfreiheit36.de/grosse-freiheit](http://docksfreiheit36.de/grosse-freiheit)  
Email: [info@grossefreiheit36.de](mailto:info@grossefreiheit36.de)

## GoldFischGlas



GoldFischGlas, with its long bar and a mini-disco, has evolved into a favoured and consistently popular meeting place in the heart of the Schanzenviertel. Bathed in subdued lighting and slick but casual atmosphere, it's the perfect spot to savour a café au lait, sip on long drinks, or relish a Beck's Gold.

Photo: Hamburg Tourismus GmbH  
Address: Bartelsstraße 30, Hamburg  
Opening hours: Daily from 2pm  
Internet: [www.instagram.com/goldfischglas.hamburg](http://www.instagram.com/goldfischglas.hamburg)  
Email: [kontakt@goldfischglas.de](mailto:kontakt@goldfischglas.de)  
More Info: Daily Happy Hour until 10pm

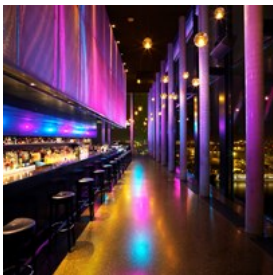
## Mojo Club



When Mojo Club opened at the beginning of the 1990s, it was the place to be because it definitively enshrined club culture in Hamburg. The hip hop and dancefloor jazz evenings were of the highest quality, and the so-called 'Dub Conferences' held here, where the people on the dancefloor were soaked in bass, are also fondly remembered. Which is why old and young dance enthusiasts are delighted that the legendary Mojo Club has opened its doors again for more long nights.

Photo: Long Truong/unsplash  
Address: Reeperbahn 1, Hamburg  
Phone: +49 40 319 1999  
Internet: [www.mojo.de](http://www.mojo.de)  
Email: [club@mojo.de](mailto:club@mojo.de)

## 20 Up Bar



The Empire Riverside Hotel, located high above the St Pauli Landungsbrücken, houses the 20 Up as one of its two bars. The name reveals the exclusive location on the 20th floor of the building. Even without booking a hotel room, you can stop by for a cocktail and enjoy a breathtaking view of the harbour in a classy atmosphere.

Photo: Oliver Heinemann\_Studio11/Hamburg Tourismus GmbH  
Address: Empire Riverside Hotel Hamburg, Bernhard-Nocht-Straße 97, Hamburg  
Public Transport: U3 St. Pauli  
Opening hours: Daily 6pm-1am  
Phone: +49 31119 70 470  
Internet: [www.empire-riverside.de/en/restaurant-and-bars/skylene-bar-20up](http://www.empire-riverside.de/en/restaurant-and-bars/skylene-bar-20up)

## Baalsaal



In Baalsaal, house and techno dominate the sound, but all other facets of electronic music are not neglected either. The powerful sound system attracts DJs used to larger dance floors, but promising newcomers are welcome to take control of the mixers, too. Early birds be warned: the action doesn't really start before 1 am.

Photo: Hamburg Tourismus GmbH  
Address: Reeperbahn 25, Hamburg  
Opening hours: Thu 11pm-8am, Fri & Sat 11:45pm-8am  
Phone: +49 176 704 868 14  
Internet: [salla-kazan.com/baalsaal](http://salla-kazan.com/baalsaal)

## Uebel & Gefährlich



The imposing overground bunker on Feldstraße, once a grimy, dark, and underused stone block on the outskirts of Heiligengeistfeld, has been gradually revitalised by various companies. The arrival of the club Uebel & Gefährlich on the fourth floor finally established a vibrant party and music culture. Since then, Hamburg has gained a venue that impresses not just with its unique location, but also with the great acts that perform here.

Photo: Hamburg Tourismus GmbH  
Address: Feldstraße 66, Hamburg  
Phone: +49 40 31 79 36 10  
Internet: [www.uebelundgefaehrlich.com](http://www.uebelundgefaehrlich.com)  
Email: [info@uebelundgefaehrlich.com](mailto:info@uebelundgefaehrlich.com)

### Haus 73



Haus 73 offers a lively cultural program in numerous rooms spread over several floors. Come here for concerts, dance evenings, jam sessions, theatre performances, film screenings, and more. It is also a popular place to stop for breakfast or small snacks.

Photo: Hamburg Tourismus GmbH

Address: Schulterblatt 73, Hamburg

Phone: +49 40 319 75 55 15

Internet: [www.dreiundsiebzig.de/#start73](http://www.dreiundsiebzig.de/#start73)

Email: [info@dreiundsiebzig.de](mailto:info@dreiundsiebzig.de)

### Boilerman Bar



The Boilerman Bar specialises in so-called Highballs. These drinks consist of a base spirit like whisky or gin and a 'filler' like ginger ale, tonic water, or the like. The best-known Highball is probably the Gin & Tonic. One might think such drinks are easy to prepare, but at the Boilerman, they are elevated to an art form.

Photo: Adam Wilson/unsplash

Address: Eppendorfer Weg 211, Hamburg

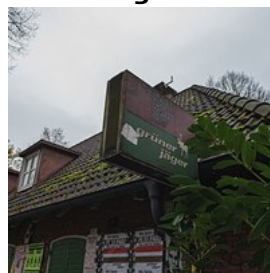
Opening hours: Mon–Thu 6pm–1am, Fri & Sat 6pm–2am, Sun closed

Phone: +49 40 55 55 75 440

Internet: [www.instagram.com/boilermanbar](http://www.instagram.com/boilermanbar)

Email: [bar@boilerman.de](mailto:bar@boilerman.de)

### Grüner Jäger



Located in the middle of Neuer Pferdemarkt, the Grüne Jäger acts as a sort of border post between the Kiez and Schanze areas. Not only do pop and rock concerts by smaller bands take place here regularly, but it is also home to one of the most successful Hamburg club series in recent years, the 'Revolver Club'.

Photo: Hamburg Tourismus GmbH

Address: Neuer Pferdemarkt 36, Hamburg

Public Transport: U3 Feldstraße, St. Pauli

Phone: +49 40 21 99 40 29

Internet: [www.gruener-jaeger-stpauli.de](http://www.gruener-jaeger-stpauli.de)

Email: [jagd@gruener-jaeger-stpauli.de](mailto:jagd@gruener-jaeger-stpauli.de)

### Cotton Club



After several moves, the oldest jazz club in Hamburg made its home underground on Großneumarkt in 1971. Since then, it has treated its guests to live music from national and international artists. Phil Masons N.O. All Stars, Truck Stop, Ikey Robinson and Sami Swoi have all performed here. There is table service for drinks and snacks.

Photo: Hamburg Tourismus GmbH

Address: Alter Steinweg 10, Hamburg

Phone: +49 40 34 38 78

Internet: [www.cotton-club.de](http://www.cotton-club.de)

Email: [info@cotton-club.de](mailto:info@cotton-club.de)

### Halo



At Halo, the party goes on with abandon. With a constantly changing lineup of house, R&B, and electronic DJs, some of international renown,

Halo attracts revellers to Große Freiheit for uninhibited dancing in droves.

Photo: Hamburg Tourismus GmbH  
Address: Große Freiheit 6, Hamburg  
Phone: +49 176 603 004 82  
Internet: halo.club  
Email: info@halo.club

### Chug Club



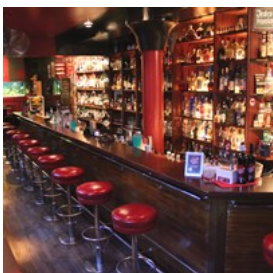
Discover the unique Chug Club, where tequila and mezcal take centre stage.

This chic spot features elegant green velvet seating and captivating

stained glass accents. Known for its innovative mini-cocktails, or 'chugs', the venue offers a fun twist on responsible drinking.

Photo: Laure Noverraz/unsplash  
Address: Taubenstraße 13, Hamburg  
Opening hours: Sun-Thu 6pm-1am, Fri & Sat 6pm-2am  
Phone: +49 40 35 73 51 30  
Internet: www.thechugclub.bar

### Christiansen's



The award-winning star bartender Uwe Christiansen regularly creates new cocktails in his bar, including some with intriguing names

like 'Apple Strudel' or 'Virgin Mint Colada'. For enthusiastic guests who want to try their hand at mixing, Christiansen also offers crash courses.

Photo: Hamburg Tourismus GmbH  
Address: Pinnasberg 60, Hamburg  
Public Transport: S-Bahn Reeperbahn  
Opening hours: Tue-Thu 8pm-1am, Fri 8pm-2am, Sat 8am-3am, Sun & Mon closed  
Phone: +49 40 317 2863  
Internet: christiansens.de  
Email: bar@christiansens.de

### Docks



The Docks is an integral part of Hamburg's music and party scene. Until the 1980s, the hall on Spielbudenplatz served as a cinema. In addition to

hosting a variety of concerts by well-known national and international artists, the Docks transforms into a dance temple for all party-goers on weekends, with rotating DJs.

Photo: Hamburg Tourismus GmbH  
Address: Spielbudenplatz 19, Hamburg  
Phone: +49 40 317 88 30  
Internet: docksfreiheit36.de/docks  
Email: info@docks.de

### Angie's Nightclub



Angie's has live bands & DJs playing swing, jazz and funk. This loungey club with a classy vibe also serves excellent cocktails. This decadent club has been entertaining locals since 1991!

Photo: Alexander Popov/unsplash  
Address: Spielbudenplatz 27, Hamburg  
Phone: +49 40 31 77 88 11  
Internet: www.tivoli.de/gastronomie/nachtclub-angies  
Email: info@angies-live-music-club.de

### LeLion



Heavy, sound-dampening carpeting, dim indirect lighting, bizarrely patterned wallpaper, and as a focal point — a massive metal lion set into the back wall, standing guard over the people at the bar. Welcome to the Kingdom of the Lion! Here, Jörg Meyer invented the now-famous Gin Basil Smash.

Photo: LeLion\_HHT/Hamburg Tourismus GmbH

Address: Rathausstraße 3, Hamburg

Opening hours: Mon-Sat 6pm-1am, Sun closed

Phone: +49 40 334 753 780

Internet: [www.lelion.net](http://www.lelion.net)

### Indra Club 64



'Where the Beatles played first' is Indra's claim to fame. The fact that the Fab Four's first Hamburg gig took place here still gives the club a cult aura to this day. Besides, Indra has also earned a good reputation as a medium-sized live music club in recent times.

Photo: Hamburg Tourismus GmbH

Address: Große Freiheit 64, Hamburg

Phone: +49 178 513 70 12

Internet: [indramusikclub.de](http://indramusikclub.de)

Email: [oender@indraclub64.de](mailto:oender@indraclub64.de)

## SHOPPING



Sven Schwarze/Hamburg Tourismus GmbH

Hamburg is a true metropolis when it comes to shopping. Whether you are after fine wines and food or the latest in clothing fashions — Hamburg's got you covered. There are numerous pedestrian shopping areas, shopping arcades, department stores and small boutiques competing for space in everything from classical buildings in the Jugend style to hypermodern buildings.

### Mellin Passage



In the old Mellin arcade — Hamburg's oldest shopping arcade today — you can admire the ceiling paintings and stained glass from the turn of the last century. Here, you'll find antiques, art and rare literature at Felix Jud, exclusive porcelain vases and dishware at the Königliche Porzellan Manufaktur, and countless creatively designed bags at Tumi.

The Mellin Passage connects the Alsterarkaden with the luxury shopping street Neuer Wall. With the picturesque ceiling paintings the shopping mall is a real find for tourists alongside their shopping spree.

Photo: Hamburg Tourismus GmbH

Address: Neuer Wall 13, Hamburg

### Karolinenviertel



Colourful, alternative, creative and enticing, the market street in the Karolinen district shows that it can be on par with the big shopping streets and centres in the Hanseatic city. Nevertheless, the area retains its particular vibe. The exceptional position of the Karolinen district has helped maintain its vibrant, village character.

Photo: Hamburg Tourismus GmbH

Address: Marktstraße, Hamburg

Public Transport: Subway U3, exit Feldstraße

Internet: [www.hamburg.com/residents/neighbourhoods/11751156/karoviertel](http://www.hamburg.com/residents/neighbourhoods/11751156/karoviertel)

### St Georg District



Ironically, the most sensual and intense district in the heart of Hamburg bears the name of a saint. This apparent contradiction is characteristic of Saint Georg. The residents call their district a 'world village'.

On just 1.8 square kilometres, in a crossover of cultures, a unique scene has developed, both explosive and fascinating. St Georg is quirky and sinful, chic and gay, and always good for sensational headlines.

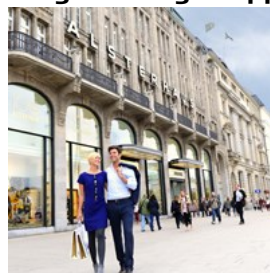
Photo: N.M.Bear/shutterstock

Address: Lange Reihe, Hamburg

Public Transport: All trains to the Central Station

Internet: [www.hamburg.com/residents/neighbourhoods/11750518/st-georg](http://www.hamburg.com/residents/neighbourhoods/11750518/st-georg)

### Jungfernstieg Shopping Promenade



Jungfernstieg provides a diverse connection between the Inner Alster and the surrounding shops and attractions. Set a date at this central location and start shopping in the nearby department stores — especially the famous and traditional Alsterhaus but also small but refined shops. After a break and refreshment in the Alsterpavillon, continue through the surrounding shopping areas and arcades.

Photo: Sven Schwarze/Hamburg Tourismus GmbH

Address: Jungfernstieg, Hamburg

Public Transport: All trains to Jungfernstieg station

Internet: [www.hamburg.com/shopping/destinations/11893156/jungfernstieg](http://www.hamburg.com/shopping/destinations/11893156/jungfernstieg)

### Europa Passage



Europa Passage is more than a shopping centre — it is a real attraction in Hamburg. There are over 120 shops on five floors. Whether you're into fashion, books or electronics, the shopping mall in the city centre between Jungfernstieg and Mönckebergstrasse has it all. You can spend a lazy afternoon protected from the wind and weather in this impressive building designed by Hamburg architect Hadi Teherani.

Photo: C. Spahrbier/Hamburg Tourismus GmbH

Address: Ballindamm 40, Hamburg

Public Transport: U + S Bahn to Jungfernstieg

Opening hours: Mon-Sat 10am-8pm

Phone: +49 40 30 09 26 40

Internet: [www.europa-passage.de/en](http://www.europa-passage.de/en)

Email: [info@europa-passage.de](mailto:info@europa-passage.de)

## Mönckebergstraße



Mönckebergstraße, or just Mö for short, is Hamburg's major shopping street. Until 1907, this area between the main train station and the City Hall was known as Gägenviertel; here, the city's poorer residents lived on narrow streets with half-timbered houses. When Mönckebergstraße was constructed, Hamburg's administration created the boulevard that could best represent the pride and economic power of the Hanseatic city. Even today, this boulevard displays an impressive variety of large department stores, fashion boutiques, retail shops, cafés and food stalls. The Levantehaus is among the city's smallest and finest shopping arcades.

Photo: B. Hertmann/Hamburg Tourismus GmbH  
Address: Mönckebergstraße, Hamburg  
Internet: [www.hamburg-travel.com/shopping-enjoying/shopping-in-hamburg/moenckebergstrasse](http://www.hamburg-travel.com/shopping-enjoying/shopping-in-hamburg/moenckebergstrasse)

## Alsterhaus



The Alsterhaus in Hamburg is one of Germany's major department stores. The exclusive range of products, the classy sense of trends and the artful presentation have shaped the image of the Alsterhaus significantly. On six floors the premium department store presents many shopping highlights — from international luxury brands to home accessories and prime groceries — and therefore links tradition and modernity.

Photo: Hamburg Tourismus GmbH  
Address: Jungfernstieg 16-20, Hamburg  
Opening hours: Mon-Sat 10am-8pm

Phone: +49 40 35 90 10  
Internet: [www.alsterhaus.de/en](http://www.alsterhaus.de/en)

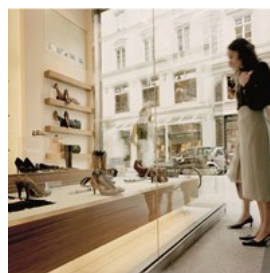
## Schanzenviertel



Schanzenviertel is home to many bars, restaurants, small foreign traders, fashion boutiques and associated clientele dominate the streets in the centre. Just recently in 'Schanze' (as the Hamburg natives say) a series of new stores have opened that make the area attractive and versatile for shopping.

Photo: Hamburg Tourismus GmbH  
Address: Sternschanze, Hamburg  
Internet: [www.hamburg.com/residents/neighbourhoods/11751068/schanzenviertel](http://www.hamburg.com/residents/neighbourhoods/11751068/schanzenviertel)

## Eppendorf



Eppendorf is one of Hamburg's 'chic' districts. The shopping trip in Eppendorf is best started on one of the main streets: Eppendorfer Landstraße, Eppendorfer Weg, or Eppendorfer Baum.

Cool and stylish fashion from Sweden can be found at the Grand Hotel of Sweden. At Linette, you will find current collections by Chloé, Marc Jacobs, Marni and Prada. In the quaint Kaffeerösterei Burg on Eppendorfer Weg, you can buy various types of freshly roasted coffee, as well as cocoa, teas, and chocolates.

Photo: Hamburg Tourismus GmbH  
Address: Hamburg-Eppendorf, Hamburg  
Internet: [www.hamburg-travel.com/shopping-enjoying/shopping-in-hamburg/eppendorf](http://www.hamburg-travel.com/shopping-enjoying/shopping-in-hamburg/eppendorf)

## The Art of Hamburg



The Art of Hamburg specialises in 'declarations of love' from various artists and designers to the most beautiful city in Germany.

Right next to where the big ships are moored, you can find a tiny souvenir store that is packed with authentic, high quality and sometimes even practical items.

Photo: Hamburg Tourismus GmbH

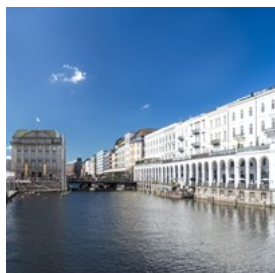
Address: Ditmar-Koel-Straße 19, Hamburg

Phone: +49 40 41 42 44 19

Internet: [the-art-of-hamburg.de](http://the-art-of-hamburg.de)

Email: [ahoi@the-art-of-hamburg.de](mailto:ahoi@the-art-of-hamburg.de)

## Alsterarkaden



Stroll under the arcades and enjoy the Mediterranean atmosphere and exclusive shops. Hungry? Then don't miss the Arabian

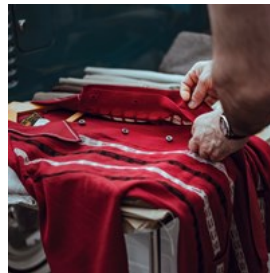
cuisine at Saliba. In the old Mellin arcade — Hamburg's oldest shopping arcade today — leading to the Neuer Wall, you can admire the ceiling paintings and stained glass from the turn of the 20th century. To relax, just sit on the steps by the canal, feed the swans, watch the canal steamers at the locks, or walk along the canal to the Elbe.

Photo: Andreas Vallbracht/Hamburg Tourismus GmbH

Address: Alsterarkaden, Hamburg

Internet: [www.hamburg-travel.com/shopping-enjoying/shopping-in-hamburg/alsterarkaden](http://www.hamburg-travel.com/shopping-enjoying/shopping-in-hamburg/alsterarkaden)

## Levantehaus



Rising towards the sun — that is the meaning of the word 'levante'.

Constructed in 1911/1912 by Franz Bach as an office building, the

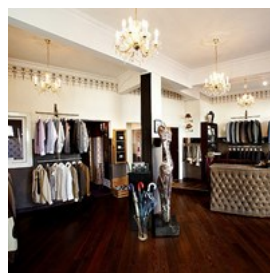
passage's first major tenant, the German Levante Line, gave this landmark its name. The atmosphere is enhanced by exquisite shops of various kinds, from cafés and fashion boutiques to fragrant bakeries and gift shops that cater to every desire.

Photo: Clem Onojeghuo/unsplash

Address: Mönckebergstraße 7, Hamburg

Internet: [www.levantehaus.de](http://www.levantehaus.de)

## Herr von Eden



Bent Angelo Jensen, the founder of Herr von Eden, has gained fame for his suits, especially since rapper Jan Delay started wearing his designs on

stage. Known for his impeccable style, Jensen likes to combine classic cuts, sometimes inspired by the 30s, sometimes by the 60s, with unusual accessories such as the Edeneyes / Mikita sunglasses, favoured by celebrities like Lady Gaga.

Photo: Hamburg Tourismus GmbH

Address: Marktstraße 33, Hamburg

Opening hours: Tue-Sat 11am-7pm, Sun & Mon closed

Phone: +49 40 650 65 200

Internet: [herrvoneden.com](http://herrvoneden.com)

### McArthurGlen Designer Outlet Neumünster



Only 40 minutes from Hamburg, you will find the McArthurGlen Designer Outlet Neumünster. Northern Germany's largest outlet

is offering 30-70% off RRP all year round and has become a shopping paradise for fashion lovers. More than 110 stores with your favourite designer brands such as Armani, Gucci, Hugo Boss, Polo Ralph Lauren, Adidas, Zwilling or WMF as well as a diversified gastronomy and the village-style, invite guests to linger. The location next to motorway A7, free parking and a shuttle from Hamburg Dammtor provide easy access.

Photo: Hamburg Tourismus GmbH

Address: Oderstraße 10, Neumünster

Opening hours: Mon-Sat 10am-8pm, Sun closed

Phone: +49 4321 55 86 88 0

Internet: [www.mcarthurglen.com/en/outlets/de/designer-outlet-neumuenster](http://www.mcarthurglen.com/en/outlets/de/designer-outlet-neumuenster)

### Neuer Wall



Neuer Wall is the boulevard of luxury brands: from Armani to Jil Sander, Bulgari, Cartier and Sönnichsen are represented here, as are

Offermann and Louis Vuitton. You can reach the luxury shops over wide and elegantly paved pavements to rejoice at Windsor or Burberry's clothing, jewellery at Tod's, writing instruments from Montblanc, or jewellery at Wempe.

Photo: ©Sven Schwarze/Hamburg Tourismus GmbH

Address: Neuer Wall, Hamburg

Internet: [www.neuerwall-hamburg.de/en](http://www.neuerwall-hamburg.de/en)

### Spitalerstraße



One of the most popular shopping streets in Hamburg runs from the central station to Gerhart-Hauptmann-Platz. There are chain stores here

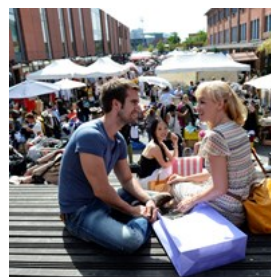
such as Zara, Douglas, H&M, Anson's and Görtz. Jewellers, opticians and Thalia, Hamburg's largest bookshop, are located next door to banks, chemists and cafés.

Photo: Artificial Photography/unsplash

Address: Spitalerstraße, Hamburg

Internet: [www.hamburg.com/shopping/destinations/11893258/spitalerstrasse](http://www.hamburg.com/shopping/destinations/11893258/spitalerstrasse)

### Flohschanze Flea Market



The flea market around the old cattle slaughterhouse for many St Pauli natives marks the start of the weekend. On Saturday mornings,

countless retailers set up their stalls here, with clothes, antiques, records, books, musical instruments, bikes, chic retro furniture — whatever your heart desires and your luggage can fit.

Coffee, cold drinks and some snacks are on offer at the gatehouse on Feldstraße that has been converted into a cafe.

Photo: Hamburg Tourismus GmbH

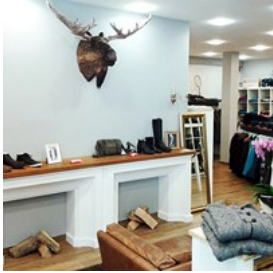
Address: Neuer Kamp 30, Hamburg

Public Transport: Subway U3, exit Feldstraße

Opening hours: Every Sat 8am-4pm

Internet: [www.marktkultur-hamburg.de/?p=59&var=0](http://www.marktkultur-hamburg.de/?p=59&var=0)

## Derbe & Support



The makers of the Derbe label equipped the classical, wind and weather-defying jacket with the Hamburg coat of arms, gave it a brightly coloured exterior and a lining with a fish-head print, and since then the 'Derbe Friese' has been a long-distance runner, not only in Hamburg. All models of the snazzy raincoat for men and women are available in the Derbe store on Osterstraße in Eimsbüttel.

Photo: Hamburg Tourismus GmbH

Address: Osterstraße 169, Hamburg

Opening hours: Mon-Fri 10am-7pm, Sat 10am-6pm, Sun closed

Phone: +49 40 49 22 29 29

Internet: [www.derbe-hamburg.de](http://www.derbe-hamburg.de)

Email: [info@derbe-hamburg.de](mailto:info@derbe-hamburg.de)

## Hanseviertel



The Hanseviertel shopping mall is nestled in the heart of Hamburg. Nowhere else can so many different stores be found under one roof.

Fashion, gifts and treats to savour in a very special way. Also worth seeing inside is a spectacular granite globe showing the history of the Hanseatic trade routes.

Photo: Jordan Nix/unsplash

Address: Poststraße 33, Hamburg

Opening hours: Mon-Sat 10am-7pm

Phone: +49 40 80 802 02 20

Internet: [www.hanseviertel.de](http://www.hanseviertel.de)

Email: [info@hanseviertel.de](mailto:info@hanseviertel.de)

## St Pauli Night Market



The St Pauli Night Market is not your average weekly market. It takes place at the heart of the Reeperbahn, on the Spielbudenplatz. It very much shares the St Pauli vibe and is open late (at least for a flea market).

The beer garden with a live music stage makes this weekly market an after work meeting place and offers an unforgettable shopping experience.

Photo: Hamburg Tourismus GmbH

Address: St. Pauli Nachtmarkt, Spielbudenplatz, Hamburg

Opening hours: Every Wed 4pm-11pm

Internet:

[spielbudenplatz.eu/en/experience/events/st-pauli-nachtmarkt](http://spielbudenplatz.eu/en/experience/events/st-pauli-nachtmarkt)

## TOURIST INFORMATION



Hamburg Tourismus GmbH

## Hamburg Airport (HAM)



The ultra-modern Hamburg Airport close to the city centre offers quick arrival options and easy access to all national and international destinations.

You can get to and from the airport via a suburban train (S1 line), one of the five bus lines (including a night bus and an express bus), by taxi or your own car.

You will find an overview of the most important connections to public transport with the latest schedule on the official website of Hamburg Airport.

Photo: Hamburg Tourismus GmbH

Address: Flughafen Hamburg, Flughafenstraße 1, Hamburg

Internet: [www.hamburg-airport.de/en](http://www.hamburg-airport.de/en)

### Lübeck Airport (LBC)



Lübeck Airport is a smaller airport located 8 km (5.0 mi) south of Lübeck and 54 km (34 mi) northeast of Hamburg. It is the secondary airport for the Hamburg Metropolitan Region, after the much bigger Hamburg Airport (HAM).

Sometimes you will even see the airport called 'Hamburg Lübeck' for marketing purposes.

You can get from Lübeck Airport to Hamburg by train (via Lübeck Hbf). This trip should take you about 1.5 hours. You can make the same trip by bus, but it will take you a while longer — about 2.5 hours.

Photo: yousef alfuhi/unsplash

Address: Flughafen Lübeck, Blankenseer Straße 101, Lübeck

Internet: [www.flughafen-luebeck.de](http://www.flughafen-luebeck.de)

### Public Transport



Save yourself the time and avoid the stress of driving. In the Greater Hamburg Area, suburban and underground railways and the

"MetroBus" network operate on weekdays from 5am until around 11pm at 5 to 10 minute intervals. Night, express and regional buses complete the transport network.

To make it easier on the travel budget, visitors to Hamburg have various options for cheaper tickets for group and day tickets as well as the Hamburg CARD. The Hamburg CARD not only offers public transport by bus, train and harbour ferry (HVV) but also discounts at more than 150 tourist attractions.

Photo: @jonason\_b/unsplash

Internet: [www.hamburg-travel.com/discover-hamburg/information/getting-around-hamburg/hvv](http://www.hamburg-travel.com/discover-hamburg/information/getting-around-hamburg/hvv)

### StadtRAD Hamburg



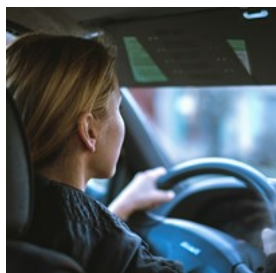
Hamburg is perfect for bikes! Explore the city at your own pace with the sleek red wheels of the Hamburg bike hire system StadtRAD. For

locals and tourists alike, StadtRAD Hamburg is practical and the perfect means of transport in the city.

There are currently more than 250 hire stations and 3,700 bikes available in many suburban railway and underground stations in the central area as well as major residential areas, business districts and major leisure and tourist attractions.

Photo: R. Hegeler/Hamburg Tourismus GmbH  
Phone: +49 40 822188100  
Internet: stadtrad.hamburg.de/en  
More Info: [www.hamburg-travel.com/info/out-and-about-in-hamburg/stadtrad-hamburg](http://www.hamburg-travel.com/info/out-and-about-in-hamburg/stadtrad-hamburg)

### Car-sharing



Car sharing is a great option if you want to take a spontaneous trip to the suburbs or have a lot of heavy shopping to do.

There are essentially two types of car-sharing schemes in Hamburg.

With non-stationary car-sharing you pick up a car and drop it off at any available parking spot within the rental area. Providers like Share Now and Sixt are parked all over the city.

Companies like Cambio and Flinkster operate car-sharing stations, where you can choose different models. These schemes work better when you book in advance and make more sense for longer-distance travel.

Photo: Jan Baborák/unsplash  
Internet:  
[www.hamburg.com/getting-around/11874754/car-sharing](http://www.hamburg.com/getting-around/11874754/car-sharing)

### Taxi



You can easily flag down a taxi or check the official City of Hamburg for numbers and further information. Fare meters are used and there are numerous taxi companies. All German Taxis go by the meter. Count on €15 per 15 minutes along with a small tip. All taxi drivers should accept payment with cash and by debit- or credit card.

Two popular and recommended companies are:

Hansa-taxi  
+49 40 211 211

Das Taxi  
+49 40 22 11 22

Photo: Hamburg Tourismus GmbH  
Internet:  
[www.hamburg.com/getting-around/11874926/taxi-services](http://www.hamburg.com/getting-around/11874926/taxi-services)

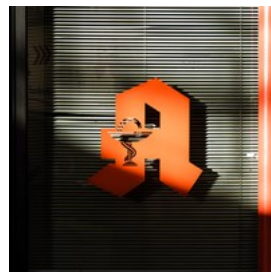
### Post



The post office at Hauptbahnhof railway Station is located in the shop K Presse + Buch. It's open on Monday to Saturday from 5 am till 5 pm. Other post offices are open Monday to Friday from 9 am till 6 pm and on Saturdays usually from 9 am till noon.

Photo: Ali Bakhtiari/unsplash  
Address: Hauptbahnhof, Glockengießerwall 8-10, Hamburg  
Opening hours: Mon-Sat 9am-5pm, Sun closed  
Internet: [www.deutschepost.de/de/s/standorte.html?objectid=4087825&isFeedbackDeeplink=true&template=locationdetail](http://www.deutschepost.de/de/s/standorte.html?objectid=4087825&isFeedbackDeeplink=true&template=locationdetail)

### Pharmacy



You can fill your prescription and buy over the counter medication in Hamburg by finding one of the many pharmacies signed with the large red

letter "A". They are often confused with drugstores (Drogerie), where you can get toiletries, but not medication.

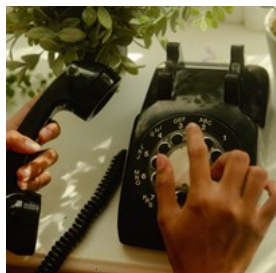
Pharmacies in Hamburg are usually open just like any other store: closed in the evening, on

Sundays and holidays. If you need medication outside of normal working hours, you can also visit your local emergency pharmacy.

Photo: Mika Baumeister/unsplash

Internet: [www.aponet.de/apotheke/apothekensuche](http://www.aponet.de/apotheke/apothekensuche)

## Telephone



To call from an international device, pre-dial the country code +49 plus the area code 40, before dialing the actual telephone number.

Photo: Wesley Hilario/unsplash

## Electricity



Germany uses the Types C and F (with two earth clips on the side) electrical plug with two round pins, same as in many countries in

Continental Europe. The standard voltage is 230 volts, but some hotels have special plugs for 110 or 120-volt shavers.

Photo: Mike Winkler/unsplash

## Population

The City: 1.9 million Hamburgers

Hamburg metropolitan area: 5.5 million

## Currency

Euro, €1 = 100 cents

## Opening hours

From Monday to Saturday, the shops open around 10am and stay open until 6pm. Bigger shopping centres like Europa Passage stay open until 8pm. Shops and boutiques located away from the city centre may close earlier.

## Internet

[www.hamburg.com/visitors](http://www.hamburg.com/visitors)

[www.hamburg-travel.com](http://www.hamburg-travel.com)

## Newspapers

Hamburger Abendblatt: [www.abendblatt.de](http://www.abendblatt.de)

Die Zeit: [www.zeit.de/hamburg](http://www.zeit.de/hamburg)

Hamburger Morgenpost: [www.mopo.de](http://www.mopo.de)

## Emergency numbers

Ambulance & Fire Service: 112

Police: 110

## Tourist information

Tourist Information at Hamburg Central Station:

Hauptbahnhof, Kirchenallee Main entrance

+49 40 300 51 300

Open daily 9am–5pm

Tourist Information at the Port:

St. Pauli Landungsbrücken 4 (between stages 4 & 5)

+49 40 33 44 220

Open daily 10am–5pm

Tourist Information at Hamburg Airport:

New Airport Plaza (between Terminals 1 & 2)

Open Mon & Tue 9am–4pm, Wed–Fri 8am–4pm, Sat & Sun closed

Sales & Service Centre

+49 40 300 51 702

Available Mon–Fri 9am–5pm







A.d Verbindungsbahn	B1	Esplanade	C2	Lilienstrasse	D3
A.d. Sande	C4	Feldstrasse	A2	Lombardsbrücke	C2 D2
ABC Strasse	B2	Ferdinands Tor	D2	Markt str	A2
Admiralitätstrasse	B3 B4	Ferdinandstrasse	C3 D2	Marseillerstrasse	B1
Adolphsplatz	C3	Fuhlentw	B3	Martin Lutherstrasse	B4
Alsterglaci	C1 C2	Gerhofstrasse	C2	Michaelisstrasse	B3
Alsterterrasse	C1	Glacischaussee	A2 A3	Millerntor Platz	A3
Alstertor	C3	Glashüttenstrasse	A1 A2	Mittel weg	C1
Alstertwiete	D2	Glockengiesserwall	D2 D3	Moorweidenstrasse	B1 C1
Alstrerufer	C1	Gorch Fock Wall	B2	Mönckebergstrasse	C3 D3
Alter Steinweg	B3	Gr. Burstah	B3 C3	Mönkedamm	C3
Alter Wall	C3	Gr. Johannisstrasse	C3	Neanderstrasse	B3
Alter Wandrahm	C4 D4	Grabenstr.	A1 A2	Neue ABCstrasse	B2
Altmannbr	D3	Grabenstrasse	A1	Neue Wall	C3
Altstädterstrasse	D3	Graskeller	B3	Neuer Jungfernstieg	C2
Am Sandtorkai	C4	Grosse Bleichen	B3 C3	Neuer Kamp	A2
An der Alster	D2	Hachmann pl	D2	Neuer Steinweg	A3 B3
B.d Kirhhöfen	B1 B2	Helgoländer Allee	A3 A4	Niedernstrasse	D3
B.d. Mühren	C4	Hermannstrasse	C3	Oberbaumbr	D4
Ballindamm	C2 C3	Herrengraben	B3 B4	Ost Weststrasse	B4 C4 D4
Bankstrasse	D4	Hohe Bleichen	B2 B3	Poolstrasse	B2 B3
Baumwall	B4	Holsten Wall	A3 B3	Poststrasse	C3
Bei St. Annen	C4	Holstenglaci	A2 B2	Pumpen	D3
Bergstrasse	C3	Holz damm	D2	Raboisen	D3
Bleichenbr	B3 C3	Hütten	A3 B3	Rathaus	C3
Brandsende	D2 D3	Johannisbollwerk	A4	Rathausmarkt	C3
Brandstweg	C3 C4	Johanniswall	D3	Rathausstrasse	C3
Breiter Gang	B3	Jungfernstieg	C2 C3	Reeperbahn	A3
Brooktor	C4	Jungiusstrasse	B2	Rehloffstrasse	B4
Brooktorkai	D4	Kaiser Wilhelmstrasse	B2 B3	Rentzelstrasse	A1 B1
Brüderstrasse	B3	Kajen	B4	Rosenstrasse	D3
Budapesterstrasse	A3	Karolinenstrasse	A1 A2	Rödingsmarkt	B4
Bugenhagenstrasse	D3	Karpfangerstrasse	A4 B4	Schaarsteinw.	B4
Burch. pl	D3	Katharinenstrasse	C4	Schauenb strasse	C3
Böhmkenstrasse	A4 B4	Kehrwieder	B4	Schopenstehl	C3 D3
Börsenbr	C3	Kennedybrücke	C2 D2	Seewartenstrasse	A4
Caffamacherreihe	B2	Kirchenallee	D2 D3	Spitalerstrasse	D3
Dammtord	C1 C2	Kl. Rosenstrasse	C3	St Georgstrasse	D2
Dammtorstrasse	B2 C2	Klein Fontenay	C1	St Pauli Elbtunnel	A4
Dammtorwall	B2	Klingberg	D3	St Pauli Hafenstrasse	A4
Deichtor- platz	D4	Klosterwall	D3	St Petersburgstrasse	A1 B1
Ditmar-Koelstrasse	A4	Kohlhöfen	B3	Stadtdeich	D4
Domstrasse	C3 C4	Koppel	D2	Stadtthausbr	B3
Dovenfleet	C4 D4	Kornträgergang	B3	Steinstrasse	D3
Drehbahn	B2	Kurze Mühren	D3	Steintord	D3
E. Merckstrasse	D2	Kurzestrasse	B3	Steintorwall	D3
Edm. Siemens Allee	B1 C1	Laeiszstrasse	A2	Stephans Platz	C2
Eichholz	A4	Lagerstrasse	A1	Sternschanze	A1
Erste Brunnenstrasse	B3	Lange Mühren	D3	Sternstrasse	A1 A2

Stockmeyerstrasse	D4	Valentinskamp	B2	Wex str	B3
Tesdorpfstrasse	C1	Venusberg	A4	Wolfgangsw	A4 B4
Theaterstrasse	C2	Vorsetzen	A4 B4	Zippelhaus	C4
Thielbek	B3	Vorwerk str	A1 A2	Zirkus weg	A3 A4
Trostbr	C3 C4	Warburgstrasse	C1	Ölmühle	A2
V.d. Holstentor	A2				