



# Bangkok

Photo: Travel mania/Shutterstock



CandyRetriever/Shutterstock

Dynamic, exotic, and richly cosmopolitan, Bangkok is one of Southeast Asia's most unique travel destinations. As a city of contrasts, this cultural epicentre entices millions of travellers each year with its glorious golden temples, bountiful markets, stunning scenery, and tantalising cuisine. Revel in the frenetic pace as you soak up the sights, shop until you drop, then tuk-tuk around town for a zesty slice of Bangkok's indulgent and risqué nightlife.

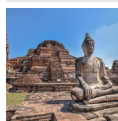


NithiPhotos/Shutterstock



Preto Perola/Shutterstock

## Featured



### Ayutthaya Historical Park

About 80 km north of Bangkok, Ayutthaya was once the capital of Siam. Today,...



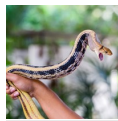
### Bangkok Canal Tour: 2-Hour...

Discover an enchanting side of Bangkok that most travellers don't get to see...



### King Power Mahanakhon

Bangkok's tallest skyscraper, the iconic 78-floor King Power MahaNakhon, is ...



### Snake Farm

As Thailand's premier snake research and conservation centre, the Snake Farm...



### Democracy Monument

In the heart of Bangkok, the Democracy Monument was built in 1939 to mark th...

## Top 5



### The Grand Palace

Built in 1782, the Grand Palace was the official home of the Thai king for o...



### Khaosan Road

Khaosan Road has long been the backpacker hub of Bangkok. By day, it's a mix...



### Damnoen Saduak Floating Market

Damnoen Saduak is Thailand's most famous floating market,



### Museum of Siam

The Museum of Siam offers visitors an interactive journey through Thai histo...



### Erawan Shrine (Thao Maha B...

Located at the busy Ratchaprasong intersection, the Erawan Shrine is dedicat...

## THE CITY



itman\_47/Shutterstock

Arriving in Bangkok is like stepping straight into the city's relentless rhythm. Sprawling across 50 districts, this is Thailand's capital and the hub where culture, history, and modern life collide.

Known to locals as 'Krung Thep' — the City of Angels — Bangkok throbs and pulses with relentless heat and frantic pace as tuk-tuks zip along concrete boulevards and Skytrains zoom overhead. Yet, within this dynamism, each district has its own character.

Dusit is the political heart, full of grand architecture and quiet gardens, while Rattanakosin, the Old Town, holds the essentials: the Grand Palace, Wat Pho, and Sanam Luang. Glitzy Siam Square carves the city's commercial core with an array of shops, malls, and boutiques. Chinatown and Pahurat are a feast of flavours and markets, while Sukhumvit comes alive at night with restaurants, bars, and clubs. Khaosan Road remains a must for budget travellers and revellers, buzzing with street food, vendors, and neon-lit nightlife.

## DO & SEE



anek.soowannaphoom/Shutterstock

Bangkok can be a lot to take in—food sizzling on every corner, monks slipping quietly through temple gates, neon signs, tuk tuks weaving through traffic, and markets that seem to spill into the street. It's messy and exciting, and that's what makes it worth exploring. You'll come across grand palaces, street shrines, museums, and enough temples to fill your days.

### The Grand Palace



Built in 1782, the Grand Palace was the official home of the Thai king for over 150 years. The complex is packed with ornate buildings, gilded spires, and detailed murals — it's easy to spend a few hours wandering. The highlight is Wat Phra Kaew, the Temple of the Emerald Buddha, which houses Thailand's most sacred Buddha statue.

Arrive early to beat the crowds and heat, and dress respectfully: long trousers and covered shoulders are required, or you won't get in.

Photo: Travel mania/Shutterstock

Address: Phra Borom Maha Ratchawang, Phra Nakhon, Bangkok

Public Transport: MRT: Sanam Chai Station. BTS: Saphan Taksin Station.

Opening hours: Daily 8:30am-3:30pm

Internet: [www.royalgrandpalace.th/en/home](http://www.royalgrandpalace.th/en/home)

### Khaosan Road



Khaosan Road has long been the backpacker hub of Bangkok. By day, it's a mix of cheap guesthouses, cafés, and travel agencies selling bus and tour tickets. At night, it turns into a street party, with music spilling out of bars, market stalls pushing everything from fried noodles to scorpions on sticks, and plenty of neon.

It's chaotic, noisy, and not everyone's scene, but if you're looking for nightlife or a budget base close to the Grand Palace and Wat Pho, this is where many travellers start their journey through Thailand.

Photo: Twinsterphoto/Shutterstock

Address: Khaosan Road

Public Transport: MRT: Sam Yot Station.

### Damnoen Saduak Floating Market



Damnoen Saduak is Thailand's most famous floating market, about 80 km southwest of Bangkok. Vendors in wooden boats sell fruit, snacks, and noodles along the canal, while stalls on the banks push souvenirs and crafts. It's lively, colourful, and very touristy, but it's still a classic day trip.

Most people go with an organised tour, though you can also catch a bus from the Southern Bus Terminal and hire a boat on arrival. Go early in the morning to avoid the thickest crowds and heat.

Photo: aphotostory/Shutterstock

Address: Damnoen Saduak, Damnoen Saduak District, Ratchaburi, Bangkok

Opening hours: Daily 8am-4pm

### Museum of Siam



The Museum of Siam offers visitors an interactive journey through Thai history and identity. Exhibits use hands-on displays, games, and multimedia that show how Thailand and its people have evolved over time. It's fun, engaging, and gives a fresh perspective on Thai culture.

Photo: singhar khamdee/Shutterstock

Address: 4 Sanam Chai Road, Phra Borom Maha Ratchawang, Phra Nakhon, Bangkok

Public Transport: MRT: Sanam Chai Station.

Opening hours: Tue-Sun 10am-6pm, Mon closed

Phone: +66 2 225 2777

### Erawan Shrine (Thao Maha Brahma)



Located at the busy Ratchaprasong intersection, the Erawan Shrine is dedicated to Phra Phrom, the Thai representation of Brahma, the Hindu god of creation. Built in 1956, it quickly became a popular spot for locals and visitors to offer prayers, incense, and flowers, seeking good fortune and protection. The shrine is almost always buzzing, with traditional Thai dance performances often held as acts of thanks by those whose wishes have been granted. Its central location near Chit Lom BTS station and shopping centres like CentralWorld makes it an easy stop during a day exploring Bangkok.

Photo: Bowonpat Sakaew/Shutterstock

Address: 494 Ratchadamri Road, Lumpini, Pathum Wan, Bangkok

Public Transport: BTS: Chit Lom Station.

Opening hours: Daily 6am-10pm

### Maeklong Railway Market



About 90 km southwest of Bangkok, Maeklong Railway Market —also called Talad Rom Hoop ('Umbrella Pulldown Market') — is one of

Thailand's quirkiest attractions. Stalls selling fresh seafood, fruit, and spices spill right onto the railway tracks, and when the train rumbles through several times a day, vendors casually pull back their awnings and goods with practised speed, only to set them back in place as soon as the carriages pass. It's chaotic, fascinating, and makes for one of the most memorable market visits in the country.

Photo: fokke baarsen/Shutterstock

Address: Mae Klong, Mueang Samut Songkhram District, Samut Songkhram

### Bangkok Canal Tour: 2-Hour Longtail Boat Ride



Discover an enchanting side of Bangkok that most travellers don't get to see by gliding along the city's picturesque canal ways.

Hop aboard a traditional longtail boat and navigate the 'klong' (canals) of the Chao Phraya River, immersing yourself in the vibrant local life of the Thonburi district. Enjoy two hours on the water, with stops at Baan Silapin (The Artist's House) and the impressive Wat Paknam Phasi Charoen.

Photo: cawardlion/Shutterstock

### Chao Phraya Dinner Cruise



Spend a magical two hours on a Chao Phraya dinner cruise, gliding along Bangkok's main river as it winds through the city. Enjoy a buffet of

Thai and international dishes while taking in the sparkling riverside scenery. Live Thai classical dance performances and music add a special touch, making it an unforgettable evening on the water with friends or loved ones.

Photo: erisatomo/Shutterstock

### Jim Thompson House Museum



Jim Thompson was an American entrepreneur who helped revive Thailand's silk industry in the 1950s and 60s. His home, a cluster of

traditional teak houses moved from around the country and reassembled here, is now a museum filled with his collection of Asian art, antiques, and textiles.

The guided tour is the only way to see inside, and it's worth it for the stories about Thompson's life and mysterious disappearance in 1967, which still hasn't been solved. The garden café and small silk shop round out your visit.

Photo: Nicolas Spehler/Unsplash

Address: 6 Kasem San 2 Alley, Wang Mai, Pathum Wan, Bangkok

Public Transport: BTS: National Stadium Station.

Opening hours: Daily 10am-5pm

Phone: +66 2 216 7368

Internet: <https://jimthompsonhouse.org>

### Lumphini Park



In the middle of Bangkok's busy streets, Lumphini Park is where locals come to breathe and move. Covering over 140 acres, it has lakes, shady paths, and open lawns, perfect for walking, paddling, or just watching the city go by. Early mornings and evenings are busiest, with people practising tai chi, jogging, or joining group aerobics, while monitor lizards and birds add a touch of wildlife. It's a good spot to see a slower, local side of Bangkok.

Photo: Panya7/Shutterstock

Address: Lumphini, Pathum Wan, Bangkok

Public Transport: MRT: Lumphini Station or Silom Station.

BTS: Sala Daeng Station.

Opening hours: Daily 4:30am-10pm

### Bangkok Cooking Classes



Bangkok is the place everyone thinks of when it comes to street food, and Thai cuisine's global fame proves it's earned that reputation. Instead of just watching your meal being made, why not join a cooking class? You'll learn how to balance Thai flavours and prepare your own dishes, then get to eat the results—fresh, hot, and exactly how you made them.

Photo: Chaton Chokpatara/Shutterstock

### Ayutthaya Historical Park



About 80 km north of Bangkok, Ayutthaya was once the capital of Siam. Today, the Historical Park is full of temple ruins, giant Buddha statues, and prang (reliquary towers). Wat Mahathat is famous for the Buddha head caught in tree roots, and Wat Phra Si Sanphet was the royal temple of the old city.

Most travellers do a day trip from Bangkok by train, bus, or river cruise, though staying overnight gives you a quieter look at the ruins.

Photo: BondSupanat/Pixabay

Address: Ayutthaya Historical Park, Pratu Chai Sub-district, Phra Nakhon Si Ayutthaya District, Phra Nakhon Si Ayutthaya

### National Museum Bangkok



The National Museum Bangkok is the biggest museum in Southeast Asia and a great stop, alongside the Museum of Siam, if you want to understand Thai history and art. It's spread across several buildings, showcasing everything from ancient sculptures and royal regalia to traditional costumes and ceramics. The collection can feel a bit overwhelming, so it's worth focusing on the highlights—like the giant Buddha statues and the Bangkok-period royal artefacts.

Guided tours are available if you want the backstory behind the displays, but wandering on your own gives a good sense of Thailand's past at your own pace.

Photo: Parmna/Shutterstock

Address: 4 Soi Na Phra That, Phra Borom Maha Ratchawang,  
Phra Nakhon, Bangkok  
Public Transport: MRT: Sam Yot Station.  
Opening hours: Wed–Sun 8:30am–4pm, Mon & Tue closed  
Phone: +66 2 224 1370

### The Ancient City (Mueang Boran)



About 35 km southeast of Bangkok, the Ancient City is an open-air museum where Thailand's most important historical sites have been recreated at a smaller scale. Spread over 200 acres, you can explore miniatures of temples, palaces, and monuments from every corner of the country at your own pace. Many visitors hire bicycles or electric carts to cover more ground, but strolling lets you linger on the intricate details and take plenty of photos. It's a convenient day trip from Bangkok for anyone interested in Thai history and architecture without travelling too far.

Photo: EcoSpace/Shutterstock

Address: 1 Sukhumvit Road, Bang Pu Mai, Mueang Samut Prakan District, Samut Prakan  
Opening hours: Daily 9am–7pm  
Phone: +66 2 026 8800  
Internet: [www.muangboranmuseum.com](http://www.muangboranmuseum.com)

### Rajadamnern Muay Thai Stadium



Experience authentic Muay Thai in the country where it was born, at one of Bangkok's most historic venues. Rajadamnern Stadium has been hosting electrifying bouts since 1945, and remains a legendary place to see the 'art of eight limbs' in action.

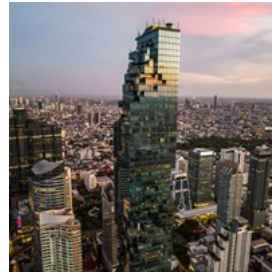
Photo: Andy Gin/Shutterstock

Address: 8 Ratchadamnoen Nok Road, Pom Prap Sattru Phai,

Bangkok

Public Transport: MRT: Sam Yot Station.  
Phone: +66 2 281 4205  
Internet: <https://rajadamnern.com>

### King Power Mahanakhon



Bangkok's tallest skyscraper, the iconic 78-floor King Power MahaNakhon, is famous for its striking pixelated design dominating the skyline of the Thai capital. Its SkyWalk observation deck, sitting 1,030 feet above the city, offers some of the best panoramic views around—especially stunning at sunset, with a thrilling glass-floored platform for an extra rush.

Photo: lemaret pierrick/Shutterstock

Address: 114 Naradhiwas Rajanagarindra Road, Si Lom, Bang Rak, Bangkok  
Public Transport: BTS: Chong Nonsi.  
Opening hours: Daily 10am–midnight  
Phone: +66 2 677 8721  
Internet: <https://kingpowermahanakhon.co.th>

### Sala Chalermkrung Royal Theatre



Once privy only to the royal court of the King, Thailand's Khon's masked dance is a real treat for the culturally savvy. Don't miss the chance to enjoy this classical masked dance, regarded as one of the most refined styles of performing art in the world.

Photo: artintowninstock/Shutterstock

Address: 66 Charoen Krung Road, Wang Burapha Phirom, Phra Nakhon, Bangkok  
Public Transport: MRT: Hua Lamphong Station. BTS: Ratchathewi Station.  
Phone: +66 2 224 4499  
Internet: [www.salachalermkrung.com](http://www.salachalermkrung.com)

### Bangkok Art and Culture Centre



For contemporary art and culture, the Bangkok Art and Culture Centre is the place to go. The multi-level space hosts exhibitions, theatre, film screenings, and design shows, with works ranging from paintings and sculptures to pottery. It's a good spot to see modern Thai creativity in action and catch something unexpected.

Photo: Coach Bas/Shutterstock

Address: 939 Rama I Road, Wang Mai, Pathum Wan, Bangkok

Public Transport: BTS: National Stadium Station.

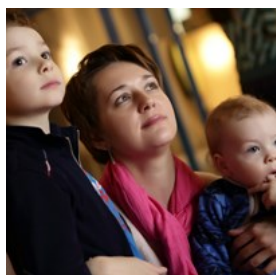
Opening hours: Tue-Sun 10am-7pm, Mon closed

Phone: +66 2 214 6630

Internet: [www.bacc.or.th/en](http://www.bacc.or.th/en)

Email: [info@bacc.or.th](mailto:info@bacc.or.th)

### Madame Tussauds Bangkok



With ten zones and over 90 wax figures, you will find yourself busy at Madame Tussaud's Wax Museum in Bangkok.

Here you can pose with A-list celebrities such as Brad Pitt and Julia Roberts on the red carpet or hop on stage with your favourite stars such as Lady Gaga and Justin Bieber.

Photo: Chubykin Arkady/Shutterstock

Address: Siam Discovery, 989 Rama I Rd, Pathum Wan, Bangkok

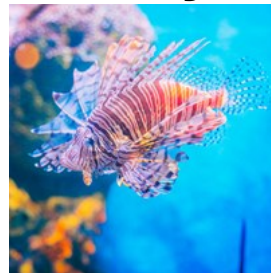
Public Transport: BTS: Siam Station.

Opening hours: Daily 10am-7pm

Phone: +66 2 658 0060

Internet: [www.madametussauds.com/bangkok/en](http://www.madametussauds.com/bangkok/en)

### SEA LIFE Bangkok Ocean World



Found inside the Siam Paragon Mall, Sea Life is Bangkok's modern, sleek aquarium complex, the largest aquatic centre in Southeast Asia. Kids and adults alike will enjoy Ocean World's 30,000 aquatic creatures from 400 different species. Marvel at this remarkable underwater world and dive with the sharks if you dare.

Photo: Nine\_Tomorrows/Shutterstock

Address: Rama I Road, Pathum Wan, Bangkok

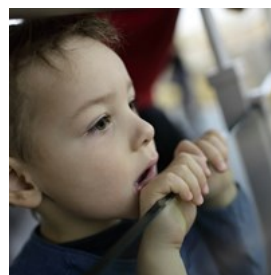
Public Transport: MRT: Siam Station. BTS: Siam Station.

Opening hours: Daily 10am-8pm

Phone: +66 2 687 2000

Internet: [www.visitsealife.com/bangkok/en](http://www.visitsealife.com/bangkok/en)

### National Science Museum



Housed in a cube-shaped modernist building, the National Science Museum is a great stop for families. Its interactive exhibits cover science, the environment, and the world around us, giving kids and adults alike a chance to explore, experiment, and spark some curiosity.

Photo: Chubykin Arkady/Shutterstock

Address: Technopolis, Klong 5, Klong Luang, Pathum Thani, Bangkok

Public Transport: MRT: Thailand Cultural Centre Station.

Opening hours: Tue-Fri 9:30am-3pm, Sat & Sun

9:30am-5pm, Mon closed

Phone: +66 2 577 9999

Internet: [www.nsm.or.th/nsm/en](http://www.nsm.or.th/nsm/en)

### Democracy Monument



In the heart of Bangkok, the Democracy Monument was built in 1939 to mark the 1932 coup that ended the absolute monarchy and introduced a constitutional government. The central sculpture shows soldiers and civilians, but the change of power happened mostly without bloodshed while the king was away.

It's a quick stop if you're exploring Rattanakosin, and the surrounding traffic circle gives you a real sense of the city's pace and energy.

Photo: saiko3p/Shutterstock

Address: Ratchadamnoen Klang Road, Wat Bowon Niwet, Phra Nakhon, Bangkok  
Public Transport: MRT: Sam Yot Station.

### Snake Farm



As Thailand's premier snake research and conservation centre, the Snake Farm offers visitors a rare glimpse into the world of these often misunderstood reptiles. Wander the grounds to see native snakes, from King Cobras to pit vipers, and catch live demonstrations, short talks, and interactive displays.

It's both educational and a little thrilling — a safe way to get up close with snakes while learning about conservation.

Photo: jeep2499/Shutterstock

Address: 1871 Rama IV Rd, Pathum Wan, Bangkok  
Public Transport: BTS: Victory Monument Station.  
Opening hours: Mon-Fri 9:30am-3:30pm, Sat & Sun 9:30am-1pm  
Phone: +66 22 52 0161

## TEMPLES



anek.soowannaphoom/Shutterstock

Bangkok is dotted with temples — grand and ornate, humble and serene — each offering a glimpse into the city's spiritual heart. Temples are more than tourist sights; they are an integral part of daily life in Bangkok, where locals come to pray, make offerings, and celebrate festivals.

With hundreds of 'wats' spread across the Thai capital, there's a staggering variety to explore. For that reason, we've handpicked the ones truly worth your time — whether it's for their unique architecture, dazzling murals, breathtaking Buddha statues, or the lively rituals that bring these sacred spaces to life.

When visiting a temple, remember to dress respectfully: shoulders and legs should be covered, and shoes removed before entering the main halls.

### Wat Arun (Temple of Dawn)



Wat Arun, or the Temple of Dawn, rises over the west bank of the Chao Phraya with its five Khmer-style towers covered in broken

porcelain and seashells — a traditional way of recycling cargo from Chinese trading ships. Up close, the detail is even more striking, and if you

don't mind a steep climb, the central prang gives you a solid view across the river towards the Grand Palace and Wat Pho.

Despite its name, the temple is at its most photogenic in the late afternoon, when the sun sets behind it and the lights come on. Most travellers pair a visit with a quick hop on the ferry across the river, which costs just a few baht and runs until late evening.

Photo: Anantachai Saothong/Unsplash

Address: 158 Thanon Wang Doem, Wat Arun, Bangkok Yai, Bangkok

Opening hours: Daily 8am-6pm

Phone: +66 2 891 2185

### Wat Pak Nam Phasi Charoen



Wat Pak Nam Phasi Charoen sits gracefully by the river, drawing visitors with its massive golden seated Buddha, a majestic sight that

gleams in the sunlight. The temple is a peaceful escape from the city's bustle, where you can wander through serene courtyards, admire intricate murals, and take in the calm riverside atmosphere.

Photo: FUN FUN PHOTO/Shutterstock

Address: 300, Ratchamongkhon Prasat Alley, Pak Khlong Phasi Charoen, Phasi Charoen, Bangkok

Opening hours: Daily 8am-6pm

Phone: +66 2 467 0811

### Wat Phra Kaew (Temple of the Emerald Buddha)



Inside the Grand Palace complex sits Wat Phra Kaew, considered Thailand's most sacred temple. At its heart is the Emerald Buddha, a small but highly revered statue carved from a single block of jade. No one is allowed to touch it except the King of Thailand, who changes the statue's golden robes three times a year to mark the changing seasons. The temple itself is covered in murals, gilded chedis, and mythical figures — it's dense with detail, so give yourself time to take it in.

Photo: artem evdokimov/Shutterstock

Address: Located in the The Grand Palace

Opening hours: Daily 8:30am-3:30pm

Internet: [www.royalgrandpalace.th/en/home](http://www.royalgrandpalace.th/en/home)

### Wat Pho (Temple of the Reclining Buddha)



Next to the Grand Palace, Wat Pho is best known for its giant Reclining Buddha — 46 metres long, 15 metres high, with gold leaf covering and mother-of-pearl details on the feet. But the temple is much more than one statue. Its grounds are filled with over 1,000 Buddha images, chedis, and ornate buildings, making it easy to spend an hour or two wandering.

Wat Pho is also Thailand's main massage school, and you can get a traditional Thai massage on site — a good way to rest your feet after walking the temple grounds and the nearby streets.

Photo: Dmitry Rukhlenko/Shutterstock

Address: 2 Sanam Chai Rd, Phra Borom Maha Ratchawang, Phra Nakhon, Bangkok

Opening hours: Daily 8am–7:30pm  
Phone: +66 83 057 7100  
Internet: [www.watpho.com/en#Page1](http://www.watpho.com/en#Page1)

### Wat Traimit (Golden Buddha)



In Bangkok's Chinatown, Wat Traimit is home to the world's largest solid gold Buddha, over three metres tall, weighing around 5.5 tons, and likely 700–800 years old. The temple is a good starting point for exploring Chinatown, and the gold statue itself is impressive up close, gleaming under the lights and surrounded by smaller, intricately decorated Buddha figures.

Photo: [apiguide/Shutterstock](#)  
Address: 661 Charoen Krung Road, Talat Noi, Samphanthawong, Bangkok  
Opening hours: Daily 8am–5pm

### Wat Saket (The Golden Mount)



Wat Saket's golden chedi—a type of stupa or Buddhist shrine shaped like a bell—was built by King Rama IV atop the ruins of earlier temples. The chedi is covered in layers of gold leaf accumulated over centuries. A winding staircase leads to the top, where a small entrance fee grants access to the terrace and temple area, offering a 360-degree view over Bangkok's rooftops. It's a calm spot to pause, enjoy the city from above, and watch local monks and visitors moving around the temple grounds.

Photo: [Pikoso.kz/Shutterstock](#)  
Address: 344 Thanon Chakkraphatdi Phong, Ban Bat, Pom Prap Sattru Phai, Bangkok  
Opening hours: Daily 7am–7pm

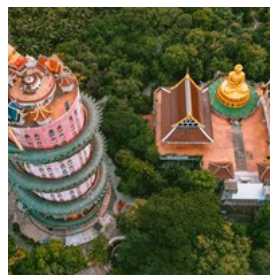
### Wat Benchamabophit (Marble Temple)



Wat Benchamabophit, or the Marble Temple, is one of Bangkok's most elegant temples. Built with Italian marble and featuring classic Thai architecture, it's known for its serene courtyard, intricate carvings, and the gleaming central Buddha statue. It's a calm place to explore, especially compared with the busier temples nearby.

Photo: [AofLine/Shutterstock](#)  
Address: 69 Rama V Road, Dusit, Dusit District, Bangkok  
Public Transport: BTS: Saphan Khwai.  
Opening hours: Daily 6am–6pm  
Phone: +66 98 395 4289

### Wat Sam Phran



Wat Sam Phran isn't your typical Buddhist temple—it's a striking 17-storey pink tower wrapped by a massive green dragon that coils all the way to the top. This unusual design makes it one of the most eye-catching temples in the vicinity of Bangkok. You can walk inside the dragon itself, following a tunnel-like staircase that rewards you with panoramic views. The temple grounds also have large Buddha statues and smaller shrines, but it's the dragon tower that makes this place so unforgettable. Located about 40 km west of Bangkok, it's best reached by car or taxi, since public transport connections are limited.

Photo: [lemaret pierrick/Shutterstock](#)  
Address: 92 8, Sam Phran, Sam Phran District, Nakhon Pathom  
Opening hours: Daily 7am–6pm  
Phone: +66 64 463 5366

## DINING



jutamas/Shutterstock

If nothing else, Bangkok is the epicentre of Southeast Asia's culinary scene, a city where flavour rules and variety is endless. From world-famous street classics like Pad Thai, fiery tom yum soup, comforting bowls of boat noodles, and sweet endings of mango sticky rice, eating here is as much a cultural experience as it is a daily pleasure.

The beauty of Bangkok is that you don't need to spend much to eat well — some of the city's most memorable meals come from sizzling woks on the pavement. At the same time, Bangkok's fine dining scene is world-class, with Michelin-starred restaurants pushing the boundaries of Thai cuisine. To capture every shade of the city's food culture in one list would be impossible, but here's a look at some of Bangkok's essential dining districts and a few standout spots worth seeking out.

### Yaowarat Road (Chinatown)



Also known as Bangkok's Chinatown, Yaowarat is a frenetic, neon-lit artery brimming with energy from morning dim sum to late-night street food feasts. Beyond its renowned Chinese eateries, the streets are lined with markets, dessert stalls,

and seafood restaurants that draw locals and visitors alike. Evening visits reveal the full spectacle: sizzling woks, steaming baskets, and the intoxicating aroma of spices filling the air — a true paradise for food lovers.

Photo: Rachata Teyparit/Shutterstock  
Address: Yaowarat Road, Bangkok

### MaeThum Padthai



Pad Thai is more than just a dish; it's a culinary icon of Thailand. Among the city's many offerings, MaeThum Padthai has emerged as a must-visit for its distinctive and delicious take on this beloved staple. Although Thipsamai is often hailed as the number-one Pad Thai destination for tourists, those in the know will tell you that MaeThum Padthai is just as worthy of a visit.

Photo: Richard w.f chen/Shutterstock  
Address: 6/3 Siri Phong Road, Samran Rat, Phra Nakhon, Bangkok  
Opening hours: Mon-Sat 10am-8pm, Sun closed  
Phone: +66 88 951 6145

### Pe Aor Tom Yum Kung Noodle

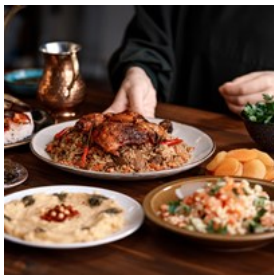


Tom Yum is the soul of Thai cuisine, and Pe Aor Tom Yum Kung Noodles takes it to legendary heights. Tucked away down an alley between Petchaburi Soi 5 and Soi 7, this no-frills spot is famous for its rich, creamy Tom Yum soup served with noodles. While the lobster tom yum steals the show, many locals prefer the classic tom yum kung, loaded with jumbo shrimp and balanced with lemongrass, kaffir lime leaves, and aromatic herbs.

Inside, Pe Aor blends rustic charm with a touch of trendy flair, featuring wooden tables and walls decorated with awards and celebrity photos. Despite its growing fame, it remains a hidden gem, drawing locals and adventurous foodies willing to navigate the busy Petchaburi street food scene. Expect a queue during peak hours, but let me tell you, it's well worth the wait.

Photo: MR.WEERAWAT EAM-SA-ART/Shutterstock  
Address: 68, 51 Phetchaburi Road, Thung Phaya Thai, Ratchathewi, Bangkok  
Public Transport: BTS: Phaya Thai Station. From there, it's about a 10-15 minute walk.  
Opening hours: Daily 10am-9pm  
Phone: +66 2 612 9013

### Sukhumvit Road



Variety is the spice of life along Bangkok's Sukhumvit Road, a long, bustling artery where local flavours mingle seamlessly with global cuisine. From classic Thai street food to international fine dining, this stretch of the city offers something for every palate.

For a memorable mix of food and fun, Cabbages & Condoms on Soi 12 serves traditional Thai dishes in a quirky, garden-like setting that promotes safe sex awareness. Down Soi 31, Appia brings the taste of Rome with fresh pasta and wood-fired pizzas, while Haoma reinvents Indian classics with seasonal ingredients in a contemporary, chic atmosphere. Japanese cuisine enthusiasts can head to Mensho Tokyo for expertly crafted ramen bowls, and for Middle Eastern fare, Soi Arab (between Sukhumvit Soi 3/1 and Soi 5), Bangkok's 'Arab Street,' is the place to go.

Photo: ElevenStudio/Shutterstock  
Address: Sukhumvit Road, Bangkok

### Phahurat Road



Just a stone's throw from Yaowarat, Phahurat Road is Bangkok's Little India. The street hums with the scents of cumin, cardamom, and sizzling spices, offering a genuine feast for the senses. Aromatic curries, freshly baked naan, spicy samosas, and a variety of vegetarian delights line the street, alongside Pakistani and Punjabi specialities that make this a must for adventurous eaters.

Photo: Kittibowornphatnon/Shutterstock  
Address: Phahurat Road, Bangkok

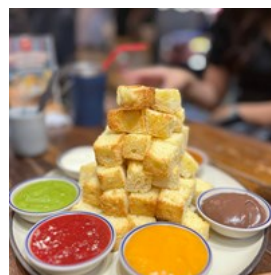
### Korean Town



For those seeking a taste of Korean culture in Bangkok, head to Korean Town on Sukhumvit Soi 12. This small and charming enclave is renowned for its array of Korean shops and eateries, where diners can enjoy everything from sizzling barbecue to comforting bibimbap.

Photo: Daniel L/Unsplash  
Address: Sukhumvit Plaza, Sukhumvit Road, Khlong Toei, Bangkok  
Opening hours: Daily 10am-10pm

### Banthat Thong Road



Banthat Thong Road has quickly become one of Bangkok's hottest food streets, earning a spot as the 14th coolest street in the world in 2024. This

lively stretch mixes traditional Thai street food, trendy cafés, and international bites, making it a must-visit for all the foodies out there.

As evening falls, vendors serve everything from spicy noodle soups and grilled skewers to sweet treats like milk-based desserts at spots such as Nueng Nom Nua. The nearby university draws a dynamic mix of students, giving the street a pulse that's as fresh as the dishes on offer.

Photo: Mewkesara/Shutterstock

### Silom Road



Bangkok's business core is a true culinary cornucopia. Take a long lunch at the bustling Soi Lalais market, savour fresh seafood near the Saladaeng intersection, or explore Indonesian flavours along Convent Road. Japanese cuisine shines at Soi Thaniya, while classic Thai dishes await around Soi Pipat. No matter what you're craving, Silom serves it up in style.

Photo: maxhaha/Shutterstock

Address: Silom Road, Bangrak, Bangkok

### Eat Me Restaurant



Intimate townhouse-turned-gastrobar, just off Silom Road, offering modern international fare rooted in top-quality, seasonal ingredients. Chef Tim Butler's creativity shines through dishes inspired by global flavours, starting with Thai-inspired cocktails at the ground-floor bar and continuing with standout plates such as fermented Thai sausage in an aromatic broth. Spread across three levels (casual bar, dining room, and leafy

terrace), it's one of those rare places where the vibe never overshadows the food and nights can stretch on until the late hours.

Photo: Marika Sartori/Unsplash

Address: 1, 6 Phiphat 2, Si Lom, Bang Rak, Bangkok

Public Transport: BTS: Sala Daeng Station. MRT: Silom Station.

Opening hours: Daily 5pm-1am

Phone: +66 2 238 0931

Internet: <https://eatmerestaurant.com>

### Le Dalat



Le Dalat is a long-standing Vietnamese gem tucked away on lively Soi 23, just off Sukhumvit Road and steps from Soi Cowboy.

Set in a beautifully converted 1950s villa filled with greenery, modern art, and French-Vietnamese touches, it offers a warm, nostalgic setting, where you can enjoy baguettes, pho, seafood, alongside refined Indochinese flavours that have kept diners coming back for decades.

Photo: Artit Wongpradu/Shutterstock

Address: 57 Soi Sukhumvit 23, Khlong Toei Nuea, Watthana, Bangkok

Opening hours: Daily 11:30am-2:30pm / 5:30pm-10pm

Phone: +66 02 259 9593

Internet: [www.ledalatbkk.com](http://www.ledalatbkk.com)

### Took Lae Dee



Took Lae Dee, which literally means "Cheap and Good," is a Bangkok institution serving both Thai and Western cuisine without breaking the

bank. Along its long counter, where chefs are constantly at work, you'll find flavorful dishes,

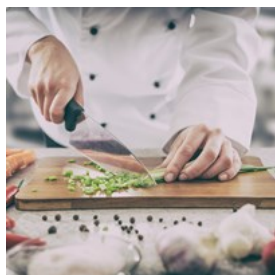
bustling energy, and a simplicity that has made this spot beloved by locals and visitors alike.

Photo: monofaction/Shutterstock

Address: Soi Sukhumvit 16, Khlong Toei, Bangkok

Opening hours: Open 24 hours

### Seven Spoons



Seven Spoons has been an Old Town stalwart since 2011, tucked into a restored Chinese shophouse near Chakkrapatipong Road.

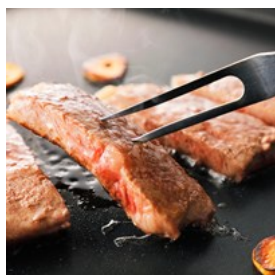
Known for its modern international menu with Mediterranean, Italian, and Middle Eastern influences, it crafts balanced, organic-forward dishes that feel both inventive and familiar — all served in a cosy, minimalist gastrobar.

Photo: REDPIXEL.PL/Shutterstock

Address: 22-24 Thanon Chakkrapatdi Phong, Wat Sommanat, Bangkok

Phone: +66 2 629 92 14

### 80/20



80/20 is a one-Michelin-starred restaurant in Bangkok's Charoen Krung district, celebrated for its innovative approach to

Thai cuisine. Under the guidance of Canadian chef Andrew Martin, the restaurant follows a 100% homegrown philosophy, sourcing all ingredients locally to craft a dynamic seasonal tasting menu. The dining experience is enhanced by a curated selection of wines and sake, all enjoyed in a setting that blends rustic charm with industrial elegance.

Photo: Nishihama/Shutterstock

Address: 1052, 1054 Charoen Krung 26 Alley, Khwaeng Bang

Rak, Bang Rak, Bangkok

Opening hours: Wed-Sun 6pm-11pm, Mon & Tue closed

Phone: +66 99 118 2200

Internet: [www.8020bkk.com](http://www.8020bkk.com)

Email: [info@8020bkk.com](mailto:info@8020bkk.com)

### CAFÉS



*kungverylucky/Shutterstock*

Bangkok's café scene is constantly evolving, a reflection of the city's mix of tradition and modernity. Coffee has become increasingly popular, and the streets are dotted with an eclectic mix of cafés—from sleek, minimalist spaces to cosy, vintage-inspired hideaways. While traditional Thai iced tea remains a favourite, the city's urban trend leans firmly towards coffee, with both locals and travellers drawn to these spots for expertly brewed cups, creative flavours, and a chance to pause amid the city's constant hum.

### Authors' Lounge



Steeped in timeless elegance, the Authors' Lounge at the Mandarin Oriental is one of Bangkok's most iconic tea venues. Located on the

ground floor of the original Oriental Hotel, it exudes old-world charm with white rattan furniture, soaring glass ceilings, and a serene garden view. Paying homage to the many writers and artists who once stayed here, the lounge

offers a classic afternoon tea with delicate pastries, finger sandwiches, and scones. Just remember—this is a refined affair, so avoid shorts and sandals to meet the dress code.

Photo: Ruth Black/Shutterstock

Address: 48 Oriental Avenue, Khwaeng Bang Rak, Bang Rak, Bangkok

Opening hours: Daily noon-6pm

Phone: +66 2 659 9000

### Floral Café at Napasorn



Tucked in between flower shops in Bangkok's bustling Flower Market, Floral Café at Napasorn is a whimsical little escape where blossoms

steal the spotlight. Step in from the busy market lanes and you're met with rustic and charming interiors, seasonal floral arrangements, antique chandeliers, and even a resident cat to complete the cosy picture. The menu leans on the sweet side with quality coffee, teas, smoothies, and cakes—slightly pricier than your average Bangkok café, but the serene, flower-filled setting makes every baht worthwhile.

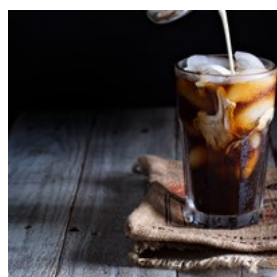
Photo: No Revisions/Unsplash

Address: 67 Chakkraphet Road, Khwaeng Wang Burapha Phirom, Khet Phra Nakhon, Bangkok

Opening hours: Daily 9am-7pm

Phone: +66 99 468 4899

### Old Town Cafe Bangkok



Just a short stroll from the Grand Palace, Old Town Café is a tranquil little hideaway where the pace of the city slows, with soft jazz in the

background and a mellow, mixed crowd. The menu blends well-made classics with playful

twists—like the Iced Old Town Muddy, a latte layered with matcha and sugar. Pair it with a baguette or light bite, and you've got the perfect recharge spot before heading back into Bangkok's Old Town.

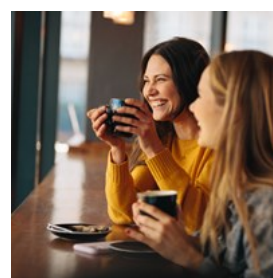
Photo: Elena Veselova/Shutterstock

Address: 130/12 Wang Burapha Phirom, Bangkok

Opening hours: Mon & Tue am-4pm, Sat & Sun 8am-4pm

Phone: +66 81 810 8456

### Wallflowers Cafe



Hidden away on Soi Nana, just a short walk from Chinatown, Wallflowers Café is another floral-inspired gem. The café spreads

across multiple floors of a restored old building, each corner filled with greenery, vintage furniture, and plenty of character. There's even a rooftop terrace for those who want to sip coffee with a view of Bangkok's Old Town.

The menu features beautifully presented cakes (the carrot cake is a standout), light lunch dishes, and creative drinks like fruit teas and specialty coffees, often adorned with edible flowers.

With its garden-meets-vintage charm, warm natural light, and photogenic nooks at every turn, Wallflowers Café feels more like a secret escape than a typical Bangkok café—making it well worth seeking out.

Photo: Jacob Lund/Shutterstock

Address: 31-33 Pom Prap, Pom Prap Sattru Phai, Bangkok

Opening hours: Daily 10am-1am

Phone: +66 94 671 4433

Internet: <https://linktr.ee/wallflowersth>

### Gallery Drip Coffee



Located on the first floor of the Bangkok Art and Culture Centre (BACC), Gallery Drip Coffee offers a unique coffee experience that art and coffee enthusiasts will appreciate. Founded by a couple of photographers, the café combines their passion for art with a dedication to high-quality coffee.

The café specialises in pour-over coffee, offering a selection of single-origin beans from Ethiopia, Kenya, and Thailand. The beans are roasted in-house, and the baristas hand-grind them to order, ensuring a fresh and flavorful cup every time. The serene, light-filled space makes it a perfect stop for a quiet coffee break while exploring BACC.

Photo: Aumnuaysin Pookraksa/Shutterstock  
Address: Bangkok Art and Culture Centre, 939 Rama 1 Road, Bangkok  
Opening hours: Tue–Sun 10:30am–7:30pm, Mon closed  
Phone: +66 81 917 2131

### Bluetamp Cafe



Bluetamp Cafe is a specialty coffee spot serving expertly brewed beans from Brazil, Ethiopia, and Guatemala, alongside a menu of Australian-style brunch dishes. Nestled in a lush, leafy corner that feels a world apart from the city bustle, the café exudes warm, rustic charm with wooden tables, hanging dried flowers, and plenty of greenery inside, while outside, a serene garden seating area invites guests to relax and unwind.

Photo: Nathan Dumlao/Unsplash  
Address: 56 Soi Lat Phrao 73, Saphansong, Wang Thonglang, Bangkok  
Opening hours: Daily 8am–6pm  
Phone: +66 2 070 9282  
Internet: [www.instagram.com/bluetampcafe](http://www.instagram.com/bluetampcafe)

### The Cassette Coffee Bar



Situated near Siam Square, The Cassette Coffee Bar feels like a café straight out of a Wes Anderson film—pink walls, vintage-style lighting, and a touch of old-world glamour that resembles a chic hotel lobby or even a 19th-century train carriage. It's one of the most Instagrammable spots in Bangkok, perfect for a coffee break between shopping sprees.

The menu is small but thoughtful, with smooth medium or dark-roast coffees, refreshing teas, and a few desserts. Don't miss the young coconut cake—fluffy, light, and delicately sweet with layers of fresh coconut. Prices do lean on the higher side, but the whimsical design and friendly, well-dressed staff make it more than worthwhile.

Just be aware: seating is limited, so snagging a spot during peak hours can be tricky.

Photo: janecocoa/Shutterstock  
Address: 264/4 Siam Square Soi 3, Pathum Wan, Bangkok  
Opening hours: Daily 10am–8pm  
Phone: +66 61 654 6666

### BAY Aree



Whether you're in the mood for a daytime coffee, a slice of cake, or an evening cocktail, BAY Aree has you covered—best enjoyed in its cosy, dimly lit, cowboy-themed interior.

Photo: Farknot Architect/Shutterstock

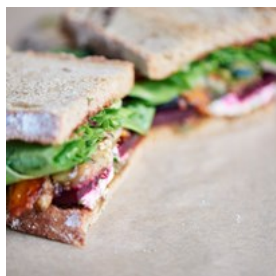
Address: 111 Phahonyothin Soi 7, Phaya Thai, Bangkok

Opening hours: Mon 10am-6pm, Tue-Sun 10am-midnight

Phone: +66 94 648 8266

Internet: [www.instagram.com/bay.aree](http://www.instagram.com/bay.aree)

### Bartels



Bartels on Sukhumvit is a bright, airy café where Scandinavian minimalism meets Bangkok energy. Behind the counter, fresh sourdough loaves are

baked daily, ready to become tasty sandwiches or breakfast rolls. Cold-pressed juices arrive in vibrant hues, and the coffee pairs perfectly with the baked goods, making it an ideal stop for a leisurely brunch or a mid-morning pick-me-up.

Photo: mavo/Shutterstock

Address: 760/1 Sukhumvit Road, Khlong Tan, Khlong Toei, Bangkok

Opening hours: Daily 7am-6pm

Phone: +66 95 002 6600

Internet: [www.bartelsthailand.com](http://www.bartelsthailand.com)

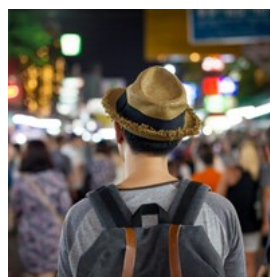
### BARS & NIGHTLIFE



Nattakorn\_Maneeerat/Shutterstock

When the sun comes down, Bangkok is well-versed on how to have a seriously good time. A city famous for its wild nightlife, Bangkok's bars, clubs, taverns, and lounges light up the streets, bustling and bursting with action. Partiers and revellers will rejoice with its abundance of bars, rooftop hangouts, neon-lit streets, and lively night markets.

### Khaosan Road



Khaosan Road, Bangkok's backpackers' hub, is the kind of place that needs to be experienced to be believed—and no traveller should leave the city without coming here.

Frequented by swathes of international tourists and locals alike, the area is always bursting with action, but it is at night when Khaosan Road truly comes alive. Here you'll find a rich and diverse selection of bars and nightclubs catering to all kinds of travellers.

Khaosan Road is also an excellent place to try local flavours. Sample from the famous pad Thai to deep-fried spring rolls, grilled meat skewers, mango sticky rice, fried roti, and coconut ice cream to barbecued crocodiles and fried and

crispy bugs, like grasshoppers, cockroaches, and scorpions.

Feeling like spending some bahts? There are also plenty of shopping opportunities here: clothing and accessories, traditional handicrafts, handmade jewellery, and vintage goods. And why not finish your night at Khaosan Road with a relaxing Thai massage?

Photo: Twinstereo/Shutterstock

Address: Khaosan Road, Bangkok

### Tichuca Rooftop Bar



Perched atop the 46th floor of the T-One Building, Tichuca brings the urban jungle to Bangkok with bamboo architecture, tropical decor, and city and river views. It's a chilled-out spot for cocktails and bar bites, and perfect for watching the sun set over the skyline. The building itself has more to explore — two other bars on lower floors and a club on the 45th — so you can hop around without ever leaving the building and make a full night of it.

Photo: Monkey Business Images/Shutterstock

Address: 46, Soi Sukhumvit 40, Phra Khanong, Khlong Toei, Bangkok

Opening hours: Sun-Thu 5pm-11:30pm, Fri & Sat 5pm-1:30am

Phone: +66 65 878 5562

Internet: [www.instagram.com/tichuca.bkk](https://www.instagram.com/tichuca.bkk)

### Bangkok by Night: Temples, Markets, and Food by Tuk-Tuk



Awarded twice as TripAdvisor Traveller's Choice 'No. 1 Experience in Thailand', this tuk-tuk night tour is a great way to discover Bangkok and learn about the local culture. See famous temples and sights illuminated at night as you whizz around the city in an iconic 3-wheeled taxi. Visit The Flower Market, the grounds of Wat Arun, and Chinatown. Plus, enjoy snacks, dinner and a dessert.

Photo: Tan Kaninthanond/Unsplash

### Jodd Fairs Night Market



One of Bangkok's newest night markets, Jodd Fairs is open every day and full of energy. You'll find everything from durian and spicy pork spine soup to giant seafood buckets served with gloves for a hands-on feast, plus sweets like salted egg lava pastry and coconut ice cream with mango. Beyond the food, there are plenty of shopping opportunities — from clothes and accessories to quirky souvenirs. Open-air bars and live music make it a place to eat, drink, shop, and soak up the city's evening buzz all in one.

Photo: GBJSTOCK/Shutterstock

Address: 15 Rama IX Road, Huai Khwang, Bangkok

Public Transport: MRT: Phra Ram 9.

Opening hours: Daily 5pm-midnight

Internet: [www.instagram.com/jodd\\_fairs/](https://www.instagram.com/jodd_fairs/)

### DJ Station



Bangkok's iconic gay nightclub, DJ Station, is a must-visit for anyone looking to dance the night away. Located in Silom Soi 2, this high-energy venue spans three floors, each with its own vibe. The ground floor features a sleek bar and multimedia screens, the first floor offers an outdoor terrace and smoking area, while the second floor houses the main dance floor, where DJs spin the latest hits, and the grand stage hosts dazzling drag shows that kick off around midnight.

Photo: Maxim Blinkov/Shutterstock

Address: 11 Soi Si Lom 2/1, Si Lom, Bang Rak, Bangkok

Opening hours: Daily 9pm-3am

Phone: +66 2 266 4029

Internet: [www.instagram.com/djstationbangkok](https://www.instagram.com/djstationbangkok)

### TRIBE Sky Beach Club



Located on the 5th floor of EmSphere Mall, TRIBE Sky Beach Club offers a tropical escape in the heart of Bangkok. With a beach club vibe, the venue features an infinity pool, sun loungers, and a stylish bar area. Panoramic views over Benchasiri Park make it perfect for sunset cocktails or a chilled afternoon. The atmosphere transitions from mellow daytime tunes to vibrant beats as the evening progresses, attracting a diverse crowd of locals and visitors alike.

Photo: BravissimoS/Shutterstock

Address: 628 Sukhumvit Road, Khlong Tan, Khlong Toei, Bangkok

Opening hours: Daily 11am-1am

Phone: +66 62 595 6046

Internet: [www.instagram.com/tribeskybeachclub](https://www.instagram.com/tribeskybeachclub)

### Havana Social



Step into pre-revolution Havana at this 1940s Cuban speakeasy in the middle of Sukhumvit. Behind an unmarked door, the bar opens into a dimly lit lounge with a huge rum collection, Latin music spinning every night, and a Sunday salsa class that keeps everyone moving their feet.

Photo: lena-wurm/Shutterstock

Address: 41, 3 Sukhumvit Road, Khlong Toei Nuea, Watthana, Bangkok

Opening hours: Daily 6pm-2am

Phone: +66 2 821 6111

Internet: <https://havasocialbkk.com>

### Patpong Night Market



In the heart of Bangkok's infamous red-light district, stalls spill onto the street selling everything from knock-off watches and clothes to quirky souvenirs, but it's the neon lights, bustling bars, and go-go clubs that really define Patpong Night Market. Tourists and locals weave between drinks, street food, and shopping — perfect for an evening stroll if you want a snapshot of Bangkok's wilder side.

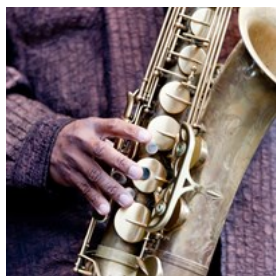
Photo: Patrick Foto/Shutterstock

Address: 61, Thanon Phat Phong, Suriya Wong, Bang Rak, Bangkok

Opening hours: Daily 6pm-1am

Phone: +66 91 778 7793

### The Bamboo Bar



Bangkok's first jazz venue, The Bamboo Bar at the Mandarin Oriental has been a sanctuary for music lovers since 1953. An institution in its own

right, it's known for live jazz and blues shows and a menu of signature cocktails and liquors that fit the room's old-school sophistication. Still one of the best spots in the city to catch live jazz, and a good nook to linger on a hot tropical night.

Photo: Markus Kaemmerer/Shutterstock

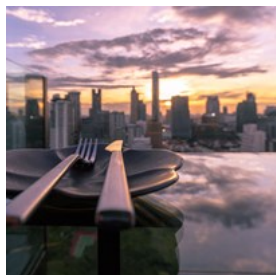
Address: 48 Oriental Avenue, Khwaeng Bang Rak, Bang Rak, Bangkok

Opening hours: Sun-Thu 5pm-1am, Fri & Sat 5pm-2am

Phone: +66 2 659 9000

Internet: [www.instagram.com/thebamboobarbangkok](https://www.instagram.com/thebamboobarbangkok)

### Vertigo & Moon Bar Rooftop



On the 61st floor of the Banyan Tree Hotel, Vertigo is part open-air grill, part rooftop bar, and all about the view.

The restaurant does steaks and seafood, while the Moon Bar next door is where most people head for a cocktail at sunset. Drinks aren't cheap, but the 360° skyline and open-air setting are what make it one of Bangkok's classic rooftop spots.

Photo: ExsoMinute/Shutterstock

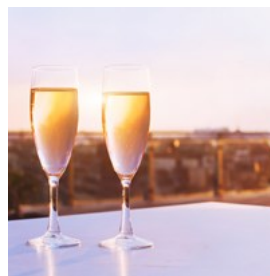
Address: 61th floor, 21/100 S Sathon Road, Thung Maha Mek, Sathon, Bangkok

Opening hours: Daily 5pm-1am

Phone: +66 2 679 1200

Internet: [www.banyantree.com/thailand/bangkok/dining](https://www.banyantree.com/thailand/bangkok/dining)

### Sirocco



Sitting 63 floors up at Lebua's State Tower, Sirocco is the rooftop you've probably seen in photos — or in the movie 'The Hangover'. Take a

seat amongst the A-list and enjoy Mediterranean cuisine and fine wine in a full alfresco dining setup. Live jazz drifts across the terrace while the city lights spread out below, twinkling all the way to the Chao Phraya River.

Photo: Song\_about\_summer/Shutterstock

Address: 64th Floor, State Tower Bangkok, 1055 Si Lom Road, Si Lom, Bang Rak, Bangkok

Opening hours: Daily 5:30pm-12:30am

Phone: +66 2624 9555

Internet: <https://lebua.com/restaurants/sirocco>

### Phra Nakhon Bar & Gallery



Just a short walk from Khaosan Road, this spot has been a favourite for students and backpackers since 1999. Part bar, part gallery, it's a relaxed

place to grab a Chang or a cocktail while checking out the rotating artworks on the walls. There's a small rooftop too, where you can take in the city view as the sun sets.

Photo: Monkey Business Images/Shutterstock

Address: 58/2 Ratchadamnoen Klang Road, Wat Bowon Niwet, Khet Phra Nakhon, Bangkok

Opening hours: Thu-Tue 6pm-1am, Wed closed

Phone: +66 2 222 0282

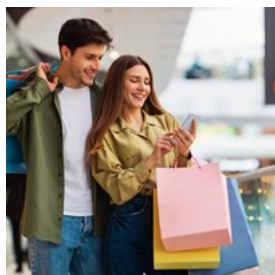
## SHOPPING



*i viewfinder/Shutterstock.com*

Have we mentioned that Bangkok is a veritable shoppers' paradise? You'll find pretty much everything and anything you could ever want, need or desire in this town - from fashion to electronics, novelties and crafts. Hit up and indulge in Bangkok's enormous array of modern shopping hubs, contemporary stores, cosmopolitan boutiques and exotic, labyrinthine markets for every conceivable consuming penchant.

### CentralWorld



CentralWorld is one of Bangkok's most popular shopping destinations, thanks to its central spot on Ratchaprasong Road, just a short walk from Chidlom BTS Station. Inside this massive mall, you'll find everything from global brands and trendy local designers to quirky concept stores and the city's flagship Apple Store. Feeling hungry? The food options are endless, ranging from casual street-food-style eats to international cuisine. Outside, the plaza is always buzzing with activity, from seasonal markets and food fairs to live performances.

Photo: rostock-studio/Shutterstock

Address: 999/9 Rama I Road, Pathum Wan, Bangkok

Public Transport: BTS: Chit Lom Station or Siam Station.

MRT: Sukhumvit Station.

Opening hours: Daily 10am-10pm

Phone: +66 2 640 7000

Internet: [www.centralworld.co.th/en/home](http://www.centralworld.co.th/en/home)

### Chatuchak Weekend Market



Chatuchak Weekend Market, or JJ Market as locals call it, is a sprawling maze of over 15,000 stalls spread across more than 25 sections. You can find just about anything here—plants, antiques, electronics, handicrafts, clothing, books, ceramics, furniture, and heaps of delicious street food. It's chaotic, colourful, and full of surprises, making it a perfect spot to lose a few hours browsing, haggling, and soaking in the energy of Bangkok's biggest market.

Photo: leungchopan/Shutterstock

Address: 587, 10 Kamphaeng Phet 2 Rd, Khwaeng

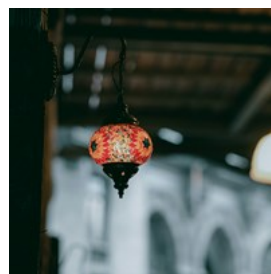
Chatuchak, Chatuchak, Bangkok

Public Transport: MRT: Kamphaeng Phet Station. BTS: Mo Chit Station.

Opening hours: Wed-Thu 7am-6pm, Fri 6pm-midnight, Sat & Sun 9am-6pm, Mon & Tue closed

Internet: [www.chatuchakmarket.org](http://www.chatuchakmarket.org)

### Terminal 21 Asok



Terminal 21 Asok is Bangkok's shopping centre with a twist, where each floor is themed after a different global city, from Tokyo to London and Istanbul. This bustling mall not only offers a diverse selection of international and local brands but also immerses visitors in a cosmopolitan experience through its innovative design. Food lovers will appreciate the extensive range of dining options at the 'Pier 21' food

court, known for its excellent value and authentic street food. For a touch of local flair, explore the quirky boutiques and artisanal shops scattered throughout the mall.

Photo: Tolga Ahmetler/Unsplash

Address: 88 Soi Sukhumvit 19, Khlong Toei Nuea, Thawi Watthana, Bangkok

Public Transport: BTS: Asok Station. MRT: Sukhumvit Station.

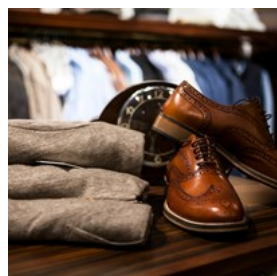
Opening hours: Daily 10am-10pm

Phone: +66 2 108 0888

Internet: [www.terminal21.co.th/asok](http://www.terminal21.co.th/asok)

Email: [infoasok@terminal21.co.th](mailto:infoasok@terminal21.co.th)

## ICONSIAM



ICONSIAM is Bangkok's mesmerising riverside destination, where luxury and local culture merge in an architectural marvel. This grand

shopping complex brings together high-end international brands and exclusive Thai boutiques under one dazzling roof. A standout feature is its floating market, a homage to traditional Thai commerce, where visitors can sample gourmet street food and shop for artisanal crafts.

The mall's striking design includes an opulent atrium and a spectacular multimedia facade that lights up the night sky. It also hosts cultural events and art installations, with even a large indoor river adding an unexpected touch of enchantment.

Photo: Terje Sollie/Pexels

Address: 299 Charoen Nakhon Road, Khlong Ton Sai, Khlong San, Bangkok

Public Transport: BTS: Saphan Taksin Station. From there, head to the Sathorn Pier (which is connected to the BTS station). ICONSIAM offers a free shuttle boat service that runs frequently between the pier and the mall.

Opening hours: Daily 10am-10pm

Phone: +66 2 495 7000

Internet: [www.iconsiam.com/en](http://www.iconsiam.com/en)

## Siam Paragon



Holding centre stage in the Siam shopping district, Siam Paragon is one of Bangkok's best-known malls, renowned for its opulence

and vast array of offerings. It houses over 250 shops from luxury labels to everyday brands, making it a paradise for fashion enthusiasts. Besides shopping, visitors can indulge in diverse culinary delights at its expansive food court. Siam Paragon also boasts unique attractions such as SEA LIFE Bangkok Ocean World, the largest aquarium in Southeast Asia, and state-of-the-art cinemas.

Photo: Pexels/Pixabay

Address: 991/1 Rama I Road, Pathum Wan, Bangkok

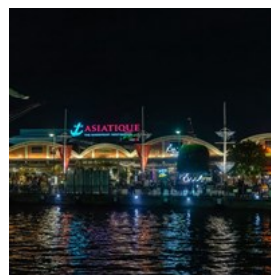
Public Transport: BTS: Siam Station.

Opening hours: Daily 10am-10pm

Phone: +66 2 690 1000

Internet: [www.siamparagon.co.th](http://www.siamparagon.co.th)

## Asiatique The Riverfront



Asiatique The Riverfront stretches along the Chao Phraya River, offering a blend of a night-market atmosphere with riverside dining and

entertainment. The promenade is lined with a variety of shops, restaurants, food stalls, bars, and venues hosting evening performances. Highlights include the Asiatique Sky Ferris wheel, providing panoramic city views, and the Calypso Cabaret show for vibrant nighttime entertainment. While the shopping experience is more tourist-centric, it's a lively spot for a

riverside stroll and a taste of Bangkok after dark.

Photo: Kyle Pangan/Unsplash

Address: 2194 Charoen Krung Road, Wat Phraya Krai, Bang Kho Laem, Bangkok

Public Transport: BTS: Saphan Taksin Station.

Opening hours: +66 92 246 0812

Phone: Daily 11am-midnight

Internet: [www.asiatiquethailand.com](http://www.asiatiquethailand.com)

Email: [info@asiatique.com](mailto:info@asiatique.com)

### Siam Center & Siam Discovery



Set side by side and connected by a skywalk on the fourth floor, these sister malls are key fixtures of the Siam shopping district. Siam

Center leans toward a younger crowd with frequent fashion shows and pop-up performances, while Siam Discovery takes a more design-focused approach, with artsy furniture shops, creative displays, and trendy boutiques.

Photo: gpointstudio/Shutterstock

Address: 194 Phaya Thai Road, Pathum Wan, Bangkok

Public Transport: BTS: Siam Station.

Opening hours: Daily 10am-10pm

Phone: +66 2 658 1000

Internet: [www.siamdiscovery.co.th](http://www.siamdiscovery.co.th)

More Info: [www.siamcenter.co.th](http://www.siamcenter.co.th)

### EmQuartier



EmQuartier is a stylish, modern shopping destination in Bangkok's upscale Sukhumvit area, connected directly to Phrom Phong BTS

Station. The mall is divided into three sections: the Glass Quartier, home to luxury brands and a gourmet supermarket; the Helix Quartier, a six-floor spiral of international dining; and the

Waterfall Quartier, which boasts a rooftop garden, a five-story waterfall, and the luxury Quartier CineArt cinema.

A standout feature is a hidden Starbucks tucked away on the 5th floor, surrounded by lush greenery and a small pond—a serene escape that feels more like a secret rooftop garden than a coffee shop, perfect for relaxing or capturing a few Instagram-worthy shots.

Photo: Dmitry Dreyer/Unsplash

Address: 695 Sukhumvit Road, Khlong Tan Nuea, Watthana, Bangkok

Public Transport: BTS: Phrom Phong Station.

Opening hours: Daily 10am-10pm

Phone: +66 2 269 1000

Internet: [www.emquartier.co.th/home](http://www.emquartier.co.th/home)

### MBK Center



MBK Center is an eight-storey Bangkok institution where the buzz of a market meets air-conditioned comfort. The 4th floor is a

wonderland for tech lovers, packed with mobile phones and all sorts of gadgets in a market-style setup, with stalls crammed into every corner. Other floors are filled with clothes, bags, and accessories, while the sixth-floor food court serves up a wide range of Thai dishes and international fare at wallet-friendly prices. If you need a break from shopping, the upper levels offer a cinema, bowling alley, and arcade for a bit of fun.

Photo: stefanolunardi/Shutterstock

Address: 444 Phaya Thai Road, Wang Mai, Pathum Wan, Bangkok

Public Transport: BTS: National Stadium Station.

Opening hours: Daily 10am-10pm

Phone: +66 2620 9000

Internet: [www.mbk-center.co.th/en](http://www.mbk-center.co.th/en)

## EmSphere



Opened in December 2023, EmSphere is the newest addition to Bangkok's upscale EM District. Just steps from Phrom Phong BTS Station and next to EmQuartier and Emporium, it offers a futuristic shopping experience with high-end brands, a compact IKEA city store, and a Gourmet Market for international and local flavours. The rooftop Tribe Sky Beach Club has a relaxed, beach-club vibe with drinks and dining, while EM Live, a 6,000-seat arena, brings major concerts and events to the heart of the city.

Photo: Pressmaster/Shutterstock

Address: 628 Sukhumvit Road, Khlong Tan, Khlong Toei, Bangkok

Public Transport: BTS: Phrom Phong Station.

Opening hours: Daily 10am–10pm

Phone: +66 2 269 1000

## Emporium



Emporium sits on bustling Sukhumvit Road, just a short walk from Phrom Phong BTS Station, and forms part of Bangkok's 'sister malls'

duo with EmQuartier. Inside, it's a mix of luxury labels and mid-range brands, but what really stands out is the way the mall feels—spacious, light-filled, and unhurried, a nice contrast to the busy streets outside. Head to the top floor and you'll find a gourmet market alongside a range of restaurants, perfect for grabbing a bite or just watching the city from above.

Photo: Ground Picture/Shutterstock

Address: 622 Sukhumvit Road, Khlong Tan, Bangkok

Public Transport: BTS: Phrom Phong Station.

Opening hours: Daily: 10am–10pm

Phone: +66 2 269 1000

Internet: [www.emporium.co.th/home](http://www.emporium.co.th/home)

## TOURIST INFORMATION



SOUTHERNTraveler/Shutterstock

## Best Time To Visit



Bangkok can be visited year-round, but timing your trip can make all the difference. The city's hot season, which goes from March to May, can be quite intense, and the rainy season, running from June to October, brings frequent showers. So, the most comfortable months for visiting Bangkok are between November and February, when the weather is cooler and less humid. This period also coincides with Loi Krathong, the enchanting festival of lights, when illuminated baskets float on waterways and sky lanterns drift overhead.

And if you're seeking to experience another local celebration, April is the time for Songkran, the world-famous Thai New Year, when the city turns into a playful water fight.

Photo: Evan Krause/Unsplash

## Passport/Visa



Visitors to Thailand typically need a passport with at least six months' validity, a visa depending on their nationality, and a completed Thailand

Digital Arrival Card (TDAC), which must be submitted within three days before arrival. Citizens of over 90 countries can enter visa-free for 30–60 days, while others may apply online for an e-Visa or obtain a Visa on Arrival for shorter stays.

As requirements can change, always confirm the latest rules with the Royal Thai Embassy or Consulate before travelling.

Photo: ConvertKit/Unsplash

Internet:

[www.thaiembassy.com/thailand-visa/thailand-visa-services](http://www.thaiembassy.com/thailand-visa/thailand-visa-services)

## Suvarnabhumi International Airport (BKK)



Suvarnabhumi International Airport, situated about 30 kilometres east of central Bangkok, is Thailand's largest and most modern

airport, serving as a primary gateway for international travellers. Travel times to the city centre range from 30 to 60 minutes, depending on traffic.

The airport is well connected to Bangkok via multiple transport options. The Airport Rail Link offers a fast connection to Phaya Thai station in about 30 minutes, with easy transfers to the BTS Skytrain. Taxis and ride-sharing services are available 24/7, while airport buses link BKK to key destinations, including Sukhumvit, Silom, and Khao San Road.

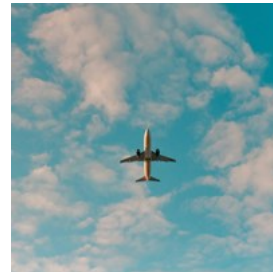
Photo: CHUTTERSNAPO/Unsplash

Address: Suvarnabhumi International Airport

Phone: +66 2 132 1888

Internet: <https://suvarnabhumi.airportthai.co.th>

## Don Mueang International Airport (DMK)



Bangkok's first airport now mainly serves short-haul flights for budget airlines and domestic routes. It is located 24 kilometres

north of central Bangkok, with travel times to the city centre typically ranging from 30 minutes to an hour, depending on traffic.

Travellers can reach the city via several transport options. The SRT Dark Red Line train links DMK to Krung Thep Aphiwat Central Terminal in around 17 minutes, with connections to the MRT Blue Line. Air-conditioned buses A1, A2, A3, and A4 serve destinations including Mo Chit, Victory Monument, Lumpini Park, and Khao San Road. Taxis and ride-sharing apps provide a convenient alternative for direct journeys.

Photo: Philip Myrtoorp/Unsplash

Address: Don Mueang International Airport

Phone: +66 2 535 1192

Internet: <https://donmueang.airportthai.co.th>

## Public Transport



Despite being known as a chaotic city, navigating Bangkok is straightforward thanks to its efficient public transport system, ideal

for tourists looking to explore the Thai capital. The BTS Skytrain (an elevated rapid transit system) and MRT (a network of underground

lines) are the most popular choices, offering fast, air-conditioned travel above and below ground.

The BTS runs along the Sukhumvit and Silom lines, connecting key areas such as Siam, Asok, and the riverside, while the MRT's lines cover extensive routes linking cultural sites and commercial districts. Both systems are user-friendly, with clear English signage.

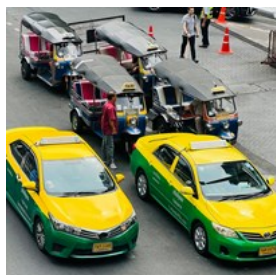
For the BTS and Airport Rail Link, tourists can use the Rabbit Card, a rechargeable contactless smart card that makes hopping on and off easy. On the MRT, travellers can buy single-journey tokens at stations, use a stored-value card, or pay contactless with VISA or Mastercard.

Photo: Niko Lewman/Unsplash

Internet: [www.bts.co.th/eng](http://www.bts.co.th/eng)

More Info: [www.transitbangkok.com/mrt.html](http://www.transitbangkok.com/mrt.html)

## Taxi



Finding a taxi in Bangkok is easy, with thousands of brightly coloured vehicles—typically green-and-yellow or pink—roaming the

streets. Both operate on meters, ensuring you pay a fair rate for your journey. For added convenience, popular ride-hailing apps like Grab and Bolt allow you to book a ride quickly, with fixed pricing and cashless payment options.

Another way to navigate Bangkok's bustling streets is by the iconic tuk-tuks, the colourful three-wheeled motorised rickshaws. These vibrant vehicles offer a more adventurous alternative to taxis, often weaving through heavy traffic with ease. While tuk-tuks don't use meters, fares can be negotiated with the driver before starting your journey. For short trips, they

can be quicker and more convenient than traditional taxis.

Photo: The Transport Enthusiast DC/Unsplash

## Post

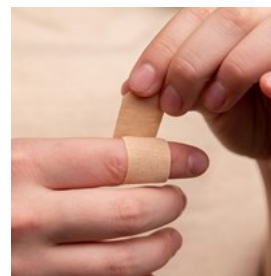


Post offices in Bangkok generally operate Monday to Saturday, with major branches open into the evening. They provide a full range of services, including domestic and international mail, parcel delivery, express services, and postal banking. Many also offer bill payments, money transfers, and packaging materials. Bangkok's post offices are easy to spot by their bright red signage and the Thailand Post logo featuring an abstract paper aeroplane design.

For travellers, branches in the Sukhumvit area are especially convenient, given their central location near popular hotels and BTS stations.

Photo: Simona Sergi/Unsplash

## Pharmacy



In Bangkok, Boots and Watsons dominate the pharmacy scene. Boots, well-known to UK travellers, operates over 230 outlets across

Thailand, offering a wide range of health and wellness products along with expert pharmacy services. Watsons, Asia's leading health and beauty retailer, boasts over 700 stores in the country, providing an extensive selection of health and beauty items. Both chains ensure convenient access to essential medical and personal care products throughout the city.

Photo: Diana Polekhina/Unsplash

Address: Boots (CentralWorld) - 999/9 Rama I Road, Pathum  
Wan, Bangkok

Opening hours: Daily 10am-10pm

Phone: +66 2 252 1280

### Telephone



Country code: +66 Area  
code central Bangkok: 2

Photo: Miryam León/Unsplash

### Electricity



Thailand runs on 230  
volts at 50 Hz. Plugs can  
vary: you'll see Type C  
(two round pins like in  
Europe), Type A and B  
(flat pins, like in the

U.S.), and Type O (three round pins in a  
triangular layout).

Photo: Mika Baumeister/Unsplash

### Population

Metro area: 11 million (2025)

### Currency

Thai Baht (THB, ฿)

### Newspapers

Bangkok Post: [www.bangkokpost.com/thailand](http://www.bangkokpost.com/thailand)

The Nation: [www.nationthailand.com](http://www.nationthailand.com)

Thai Examiner: [www.thaia Examiner.com](http://www.thaia Examiner.com)

### Emergency numbers

Tourist Police: 1155

Police & Ambulance: 191

Fire Brigade: 199





## BANGKOK Mass Transit

BTS Skytrain	
	Sukhumvit Line
	Silom Line
MRTA Subway	

2009 © UrbanRail.Net (R. Schwandl)

S Klong Thom Wat Pra Phiren	D3	Thanon Chakrabongse	B1	Thanon Phra Sumen	B1 C1 D2
Sanam Luang	B2	Thanon Chao Khamrop	D3	Thanon Phraeng Nara	B2 C2
Soi Ban Bat	D3	Thanon Charoen Krung	B3 C3 D3	Thanon Prachathipathai	D1
Soi Damnoen Klang Nua	B1 C2	Thanon Chetuphon	B3	Thanon Rachini	B2 B3
Soi Damnoen Klang Tai	C2 D2	Thanon Damrong	D2	Thanon Ratchabophit	B3 C3
Soi Damnoenklang Tai	C2	Thanon Dinso	C2	Thanon Ratchadamnoen Klang	B2 C2 D2
Soi Kasaemsi	C1	Thanon Fuang Nakhon	C3	Thanon Ratchadamnoen Nai	B2
Soi Phalittaphon	D4	Thanon Ham Buttri	B1 C1	Thanon Ratchadamnoen Nok	D1 D2
Soi Prok Wat	A4	Thanon Kalayana Maitri	B3	Thanon Ratchawon	D4
Soi Ram Buttri	B1	Thanon Khao San	B1 C1	Thanon Samsen	C1
Soi Samran Rat	C2 D2	Thanon Krai Si	C1	Thanon Sanam Chai	B3
Soi Samsen 1	C1	Thanon Lak Muang	B2	Thanon Saphan	B4
Soi Samsen 4	C1	Thanon Lan Luang	D2	Thanon Saran Rom	B3
Soi Setthakan	B4	Thanon Luang	D3	Thanon Siri Phong	C2 C3
Soi Sukhat	C3	Thanon Maha Chai	D3	Thanon Somdet Phra Pin Klao	A1 B1
Soi Tha Klang	B4	Thanon Mahachak	D4	Thanon Tanao	C1 C2
Soi Wat Kanlaya	A4 B4	Thanon Mahannop	C2	Thanon Tani	B1 C1
Soi Wiwat Wiang	D4	Thanon Mahathat	A2 A3 B4	Thanon Thai Wang	B3
Soi Woraphong	C1	Thanon Mangkon	D4	Thanon Ti Thong	C3
Thanon Anuwong	C4 D4	Thanon Na Hap Phoel	B2	Thanon Tri Phet	C4
Thanon Arun Amarin	A4	Thanon Na Phra Lan	A2 B2	Thanon Unakan	C3
Thanon Atsadang	B2 B3	Thanon Na Phra That	B2	Thanon Wang Doem	A4
Thanon Bamrung Muang	C2 D2	Thanon Nakhon Sawan	D2	Thanon Wora Chak	D3
Thanon Boriphat	D2 D3	Thanon O-Sathahon	C4 D4	Thanon Yaowarat	D4
Thanon Bowon	C1	Thanon Parinayok	D1 D2	Thanon Yommaratsukhum	D3 D4
Thanon Bunsiri	B2 C2	Thanon Phahurat	C4	Trok Ban Lo	D1
Thanon Buranasat	B2	Thanon Phra Athit	B1	Trok Nawa	C2
Thanon Burapha	C3	Thanon Phra Chan	A2 B2	Trok Sake	B2 C2
Thanon Chak Phet	B4 C4	Thanon Phra Phitak	B3 C4	Trok Sillapakorn	A2
Thanon Chakkrawat	C4 D4				