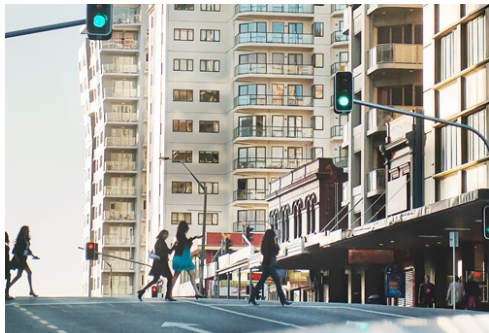




Auckland

Photo: Yiucheung/shutterstock



C. Na Songkhla/shutterstock



Olga Yatsenko/shutterstock



Dmitri Ogleznev/shutterstock

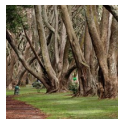
The majestic 'City of Sails' is surrounded by water, which defines its sparkling appeal. The magnificent harbour is reminiscent of other famous waterside cities but with its own unique charm. Auckland has a rich maritime history, shaping its identity as a seafaring city. Auckland is relatively small geographically, which makes it a pleasure to explore on foot, and with its dynamic population, the city has more of a cosmopolitan, sophisticated feel to it and an easy, friendly atmosphere.

Featured



Waiheke Island

The ultimate island retreat with vineyards, olive groves and beautiful beach...



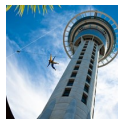
Cornwall Park

The park is wrapped around One Tree Hill and its obelisk monument, which was...



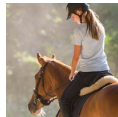
Goat Island Marine Reserve

With crystal clear waters and masses of colourful fish, Goat Island (New Zea...



Sky Tower

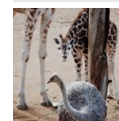
The Sky Tower stands 328 meters tall, is an icon of Auckland's skyline and i...



Horse Rides

Horseback riding is a big deal in New Zealand. You'll find numerous companie...

Top 5



Auckland Zoo

This beautifully landscaped zoo is home to 138 different species and over 87...



Auckland Botanic Gardens

Situated in Auckland's Manurewa suburb, Auckland Botanic Gardens is a 64-hec...



Auckland Art Gallery

Nestled beneath the hilltop Albert Park in central Auckland, the Auckland Ar...



Butterfly Creek

This tropical butterfly bastion shows off a variety of 800 free-flying tropi...



Hobbiton Movie Set & Waito...

Discover two of New Zealand's most visited attractions with this combo tour ...

THE CITY



Andrew Lever/shutterstock

Auckland shines as the commercial and cultural centre of New Zealand. It is situated on 50 islands and 48 dead volcanoes which make it unusual and breathtaking to behold. A stroll along the water, a hike on a volcanic island, or a cruise through the glorious harbour — just a few ways to absorb the delights of the city. This city has the largest Polynesian population in the world, adding to its cosmopolitan, dynamic appeal. High-end fashion houses, sophisticated restaurants and chic bars compliment the abundance of outdoor activities.

The mythical, magical natural beauty of New Zealand made it an obvious choice for the setting of the imaginary Middle Earth, in the films of "The Lord of the Rings" trilogy. This enchanting wonderland is filled with craggy mountains, rolling, rustic hills, endless green meadows, gentle beaches and dramatic cliffs. It is a mecca for outdoor enthusiasts, with pursuits from rock climbing and scuba diving, to parasailing and white water rafting. Horse riding is also a popular activity in New Zealand. If you want to create a "Lord of the Rings" experience — of galloping across Middle Earth — this is the perfect place to do it! Auckland has more boats per capita than any other city in the world, which explains the national obsession of sailing. Home of America's Cup, boating becomes an infectious

pastime to almost every visitor who crosses its shores.

This luscious leafy city is a joy to explore. Its infectious energy emerges in the open and affable population and lively activities. Kiwis are proud of their country. They adore visitors and love to rave about this glorious city. Don't be surprised if you make new friends among the locals!

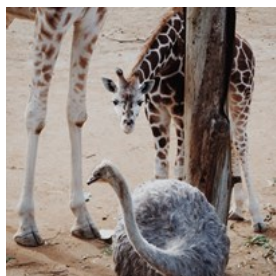
DO & SEE



HeliHead/shutterstock

The whole region of Auckland is just waiting to be explored and with its stunning nature, beautiful beaches, pristine rainforest and the magnificent Hauraki Gulf, the city does for sure offer an amazing travel experience for their visitors. Auckland is the perfect place to recharge your batteries with some pampering, see a variety of scenic landscapes, or to experience the buzz of urban bustle or why not get a thrill of some adventure activities. No matter what you are looking for, you will for sure find it in Auckland.

Auckland Zoo



This beautifully landscaped zoo is home to 138 different species and over 875 animals and it as the largest collection of native and exotic

animals in New Zealand. The zoo is conveniently located just minutes from central city and truly has a lot to see including events, animal encounters, behind-the-scenes experiences and more.

Photo: Kassey Downard/unsplash

Address: Motions Road, Western Springs, Auckland

Opening hours: May 1 to August 31: daily 9:30am-5pm.

September 1 to April 30: daily 9:30am-5:30pm

Phone: +64 9 360 3805

Internet: www.aucklandzoo.co.nz

Email: info@aucklandzoo.co.nz

Auckland Botanic Gardens



Situated in Auckland's Manurewa suburb, Auckland Botanic Gardens is a 64-hectare oasis housing over 10,000 plants. Wander through

the themed gardens, pause at seating spots, or enjoy the local birdlife. Don't miss the aromatic rose garden, a standout among the many unique areas. Free to enter, this peaceful retreat is a must-visit while in Auckland.

Photo: Ian Kuik/unsplash

Address: 102 Hill Road, The Gardens, Auckland

Opening hours: April to September: daily 8am-6pm. October to March: 8qm-8pm

Phone: +64 9 267 1457

Internet: www.aucklandbotanicgardens.co.nz

Auckland Art Gallery



Nestled beneath the hilltop Albert Park in central Auckland, the Auckland Art Gallery, or Toi o Tāmaki, is a focal point of art and culture.

Established in 1888, it proudly stands as New Zealand's first permanent art gallery. Housing the country's most extensive collection of national and international art, it frequently hosts internationally travelling exhibitions. The grandeur of the building, characterised by towering Kauri columns and a magnificent canopy, is an experience in itself.

Regular tours, family-friendly events, yoga sessions, drawing classes and a hidden theatre showing arthouse films further enrich your visit.

Photo: alarico/shutterstock

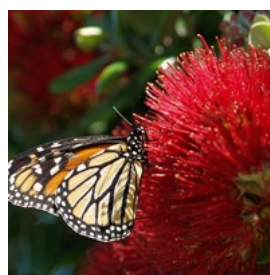
Address: Toi o Tāmaki, Wellesley Street East, Auckland CBD

Opening hours: Daily 10am-5pm

Phone: +64 9 379 1349

Internet: www.aucklandartgallery.com

Butterfly Creek



This tropical butterfly bastion shows off a variety of 800 free-flying tropical butterflies on luscious grounds with waterfalls, ponds,

flourishing foliage, turtles, fish and exotic birds. Ride the miniature Red Admiral Express train through the grounds and stop at the Buttermilk Farm petting zoo.

Photo: Tomas Pavelka/Shutterstock.com

Address: 10 Tom Pearce Drive, Auckland

Phone: +64 9 275 8880

Internet: www.butterflycreek.co.nz

Email: info@butterflycreek.co.nz

More Info: Butterfly Creek is close to Auckland International Airport

Hobbiton Movie Set & Waitomo Glowworm Caves



Glowworm Caves.

Discover two of New Zealand's most visited attractions with this combo tour from Auckland to the Hobbiton Movie Set & Waitomo

First, walk into the real-world landscape of Middle Earth and see where the "Lord of the Rings" and "The Hobbit" films were shot. Peek into Hobbit Holes, frolic in the Shire, and get a drink at the Green Dragon Inn.

Later, explore Maori myths and history on a boat ride through the famous Waitomo Caves and enjoy a magical light show put on by the millions of glowworms that live there.

Finish the tour with a drive through some of the North Island's most majestic scenery.

Photo: Claire Proud/Unsplash
Address: Auckland Scenic Tours, 145 Queen Street, Northcote Point, Auckland
Internet: www.aucklandscenictours.co.nz

Rangitoto Island



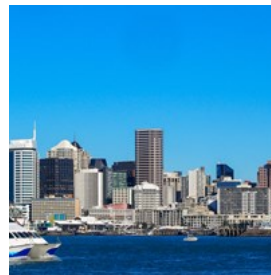
Marine Park. Hike to the summit of the volcano or stroll through the lush landscape of the lower fields. The island is accessible by ferry operated

A dormant volcanic island, only a 25-minute ferry ride from downtown Auckland, makes up part of the gorgeous scenery of the Hauraki Gulf

by Fullers Auckland Harbour Cruises. If you're feeling athletic, go for a kayak tour across the sparkling waters of Waitemata Harbor.

Photo: Tomas Pavelka/Shutterstock.com
Address: Rangitoto Island, Auckland
Internet: www.fullers.co.nz/destinations-and-experiences/destinations/rangitoto-island
Email: info@rangitoto.org

Harbour Cruise



Cruising Auckland's harbour is a spectacular way to see the city and its surroundings from a different perspective. Several different

companies offer day, afternoon, dinner and overnight cruises for different prices:

Island Escape Adventure Cruises
+64 9 358 1717
www.islandescape.co.nz

Fullers Auckland Harbour Cruises & Ferry Services
Auckland Ferry Building
+64 9 367 9111
www.fullers.co.nz

360 Discovery
Pier 4, 139 Quay Street, Downtown Auckland
+64 9 307 8005
www.fullers.co.nz

Photo: Mark_and_Anna_Wilson/Shutterstock.com
Address: Pier 4, 139 Quay Street, Auckland
Phone: +64 9 307 8005
Internet: www.fullers.co.nz
Email: info@360discovery.co.nz

Auckland War Memorial Museum



Set in one of the country's finest heritage buildings, the museum has a wonderful display of over 2000 priceless Maori and Pacific treasures and artefacts, showing its culture and history. There is also a war memorial for the Auckland province, mainly to those who lost their lives in the First and Second World Wars.

Auckland Museum is the only venue in Auckland where visitors can also experience a Maori cultural performance daily. (3 times a day and last for 30 minutes.)

Photo: Gr8/Shutterstock.com

Address: The Auckland Domain, Parnell, Auckland

Public Transport: Take the LINK Bus or Explorer Bus, or the train to Grafton Station.

Opening hours: Mon-Wed & Fri 10am-5pm; Thu 10am-8:30pm; Sat & Sun 9am-5pm.

Phone: +64 9 309 0443

Internet: www.aucklandmuseum.com

Email: info@aucklandmuseum.com

Kelly Tarlton's SEA LIFE Aquarium



Located just outside Auckland, Kelly Tarlton's SEA LIFE Aquarium houses thousands of marine animals from hundreds of species, including fish, turtles, sharks, penguins, stingrays as well as underwater viewing tunnels. This is truly a top attraction for the whole family and should definitely be on your to-do list when here.

Photo: Stelio Puccinelli/unsplash

Address: 23 Tamaki Drive, Auckland

Opening hours: Daily 9:30am-5pm

Phone: +64 9 531 5065

Internet: www.visitsealife.com/auckland

New Zealand Maritime Museum



Dedicated to one of New Zealand's national obsessions, this museum explores 1,000 years of seafaring history. Visit the themed galleries to learn how the first Polynesians got here or learn more about NZ's most famous maritime pioneer among other things. The New Zealand Maritime Museum is a suitable attraction for both young and old.

Photo: trabantos/shutterstock

Address: Quay Street, Auckland

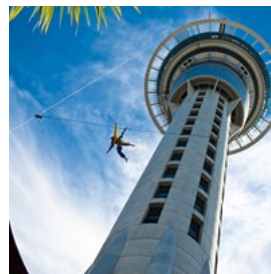
Opening hours: Daily 10am-5pm

Phone: +64 9 373 0800

Internet: www.maritimemuseum.co.nz

Email: info@maritimemuseum.co.nz

Sky Tower



The Sky Tower stands 328 meters tall, is an icon of Auckland's skyline and is an exciting hub of adrenaline activities such as SkyJump or a place where to enjoy superb dining and breathtaking 360-degree views. At the base of the Sky Tower you will find the SKYCITY Auckland entertainment complex with restaurants, casino and a theatre. So when in Auckland, make sure not to miss this amazing attraction.

Photo: matiascausa/Shutterstock.com

Address: Federal Street, Auckland

Phone: +64 800 759 2489

Internet: skycityauckland.co.nz/sky-tower

Stardome Observatory & Planetarium



The Stardome Observatory & Planetarium is a unique and fun learning experience for all ages that allows you to observe

the wonders of the universe. It doesn't come as a surprise, that this is one of the Auckland region's most popular and best-loved attractions.

Photo: Giovanni Benintende/Shutterstock.com
Address: 670 Manukau Road, Epsom, Auckland
Phone: +64 9 624 1246
Internet: www.stardome.org.nz
Email: info@stardome.org.nz

West Auckland Vineyards



New Zealand is famous for its white wines, particularly its Sauvignon Blanc. A visit to a few of Auckland's most renowned vineyards is a

treat for any wine enthusiast. They will also ship any wine that you purchase on your tour for a very reasonable fee. You can also do some wine tasting at one of the Glengarry stores, or take wine tasting tour with Auckland Wine Tours.

Photo: Prins/Shutterstock.com
Address: 417A Tamaki Drive, St Heliers, Auckland
Phone: +64 21 464 469
Internet: nzwinepro.co.nz

Waiheke Island



The ultimate island retreat with vineyards, olive groves and beautiful beaches, Waiheke Island is only a 35-minute ferry ride from downtown

Auckland. Known as the island of wine, where

some of New Zealand's best red wines come from. Thanks to the easy accessibility, Waiheke is an ideal day trip.

Photo: NZGMW/Shutterstock.com
Address: Waiheke Island, Auckland
Internet: www.waihekewine.co.nz

Goat Island Marine Reserve

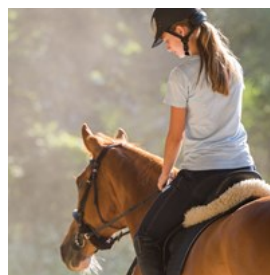


With crystal clear waters and masses of colourful fish, Goat Island (New Zealand's first and most accessible marine

reserve), is a magnet for snorkellers and divers, located only an hour from Auckland's city centre. Take the highly popular Glass Bottom Boat Tour, a fun and educational adventure for guests of all ages that teaches about fish, fauna, marine life and birds that flourish in this protected reserve.

Photo: ian woolcock/Shutterstock.com
Address: Goat Island Road, Leigh
Phone: +64 9 422 6334
Internet: www.glassbottomboat.co.nz

Horse Rides



Horseback riding is a big deal in New Zealand. You'll find numerous companies that let you experience relaxing rides through the green hills,

or teach you to gallop along the black sand beaches. Some will even pair your equestrian experience with wine tasting.

Saara and Simon from Muriwai Beach Horse Treks subscribe to three main principles: happy horses, happy customers and happy staff. You can trust them to take good care of you as you

trek along the picturesque black sand beach of Muriwai, and through the enchanting Woodhill forest.

Photo: Fotokostic/Shutterstock.com

Address: Horse Park Coast Road, Muriwai

Phone: +64 9 871 0249

Internet: www.muriwaibeachhorsetreks.co.nz

Email: staff@mbht.co.nz

Tamaki Hikoi Maori Walk



Discover an ancient Maori trail in the modern heart of Auckland City. The experienced guide will bring Auckland's unique landscape alive by storytelling, song and customs. You will hear stories passed from generation to generation and experience Auckland's most illustrated locations.

Photo: mrcmos/Shutterstock.com

Address: 32-34 Mahuhu Crescent, Quay Park, Auckland

Phone: +64 21 146 9593

Internet: www.tamakihikoi.co.nz

Email: bookings@tamakihikoi.co.nz

Waitakere Ranges Regional Park



The Waitakere Ranges (Auckland's largest regional park), located only 30 kilometres from downtown Auckland, is the perfect place where to enjoy tranquillity and unique flora and fauna. One tour company who takes you to Waitakere Ranges is the multi-award winning tour company Bush and Beach Ltd who also offers other amazing tours, such as Hobbiton movie set tour, wine and food tours as well as city tours.

Photo: attem/Shutterstock.com

Address: Waitakere Ranges, Auckland

Phone: +64 800 423 224

Internet: bushandbeach.co.nz

Email: info@bushandbeach.co.nz

More Info: Pick up and drop off at inner city accommodation

Auckland Harbour Bridge Bungy Jump



Auckland is home to the world's first harbour bridge bungy jump, operated by the bungy originals — the AJ Hackett Bungy. Jumpers

leap over the Waitemata Harbour and are offered the experience of a lifetime! The bridge is 40 metres high and if you really want it to be even more thrilling, opt for a water-touch and enjoy a nice ocean dip!

Photo: travellight/Shutterstock.com

Address: 105 Curran Street, Auckland

Phone: +64 800 286 4958

Internet: www.bungy.co.nz

Email: info@bungy.co.nz

Auckland Harbour Bridge Climb



Auckland Harbour Bridge Climb is a 1½ hour climb under, in, through and over Auckland's iconic harbour bridge.

Accompanied by a climb leader, this activity offers unique 360 degree views of the Hauraki Gulf, Viaduct Harbour and cityscapes. Full commentary covers the history, geology, geography and culture of Auckland, as well as some colourful secrets.

Photo: Daniel Wang/unsplash

Address: 105 Curran Street, Auckland

Phone: +64 800 286 4958

Internet: www.bungy.co.nz/auckland/auckland-bridge/auckland-bridge-climb

Email: info@bungy.co.nz

Matakana Coast



Stretching from Puhoi to Pakiri, the Matakana Coast is dotted with deserted bays with small islands and recreational reserves and offers some of the finest wines, arts, crafts and visitor attractions in rural New Zealand, all within an hour drive north of Auckland. Matakana also aims to be the first 'Slow Food' town in New Zealand.

Photo: Nicram Sabod/Shutterstock.com

Address: Matakana, Auckland

Internet: www.matakanacoast.co.nz

Tiritiri Matangi Island



A world-renowned wildlife sanctuary, Tiritiri Matangi is one of only two Open Scientific Reserves in New Zealand, situated in the Hauraki Gulf only a 75-minute ferry ride away from central Auckland. This is a protected haven for native and endangered species, and a true paradise for anyone who loves the nature and bird watching.

Photo: Unicus/Shutterstock.com

Address: Tiritiri Matangi Island, Auckland

Internet: www.tiritirimatangi.org.nz

More Info: The boats leave from pier 4, 139 Quay Street, Downtown Auckland

Maungawhau — Mount Eden



The grass-covered crater of Mount Eden in Auckland is the highest natural point in the region. A stunning view over the city's skyline unfolds from the top. A serene walk to the peak of the volcano is a great alternative to city bustle.

Photo: Niranjan Lamichhane/unsplash

Address: Mount Eden Road, Auckland

Matamata (Hobbiton)

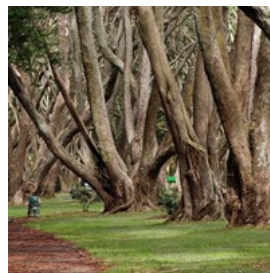


For fans of "The Lord Of the Rings" trilogy or "The Hobbit" movies, Matamata village is an essential must-visit. Here, you can experience Hobbiton first-hand and feel like one of Tolkien's characters for a moment. The village is an estimated 2 1/2-hour car ride from Auckland, but the journey is worth every minute and you can take breaks on your way there, to simply marvel at NZ's beautiful and diverse landscape.

Photo: Svetlana Orusova/Shutterstock.com

Internet: www.aucklandscenictours.co.nz/hobbiton-waitomo-caves-day-tour

Cornwall Park



The park is wrapped around One Tree Hill and its obelisk monument, which was erected in memory of the donor of the park Sir John Logan Campbell. Regular guided tours, workshops and other events are held here, and the park is a beautiful area for a stroll through nature and to

enjoy magnificent gardens, a large tree and bird diversity and stunning views.

Photo: Sam DCruz/Shutterstock.com
Address: Green Lane West, Auckland
Opening hours: Daily 7am-6pm
Phone: +64 9 630 8485
Internet: www.cornwallpark.co.nz
Email: info@cornwallpark.co.nz

DINING



Kondor83/Shutterstock.com

Auckland's cuisine is inventive and incredibly diverse representing the multitude of cultures that make up its population. There are many seafood restaurants around due to the coastal location of Auckland. This means the city always has a wealth of fresh seafood at its disposal. There are thousands of restaurants, cafes, bars and wineries, offering everything from fine dining to cheap eats where you can treat your taste buds with yummy and fresh food.

Harbourside Ocean Bar Grill



Harbourside Ocean Bar Grill is a chic premium seafood restaurant with stunning views and high quality food. Enjoy the freshest of New Zealand's seafood with relaxed à la carte dining, inside or outside on the sheltered balcony with world class harbour views.

Photo: HLPhoto/Shutterstock.com
Address: Ferry Building Level 1, 99 Quay Street, Auckland
Opening hours: Daily noon-11pm
Phone: +64 9 307 0556
Internet: www.harbourside.co
Email: auckland@harbourside.co

Orbit 360° Dining



Situated at the top of the SkyTower building, 190 metres above the ground, Orbit Restaurant offers superb views of the city while rotating once every hour. A restaurant that offers a modern dining experience and where to relish delicious kiwi-inspired à la carte menu that features the best local and seasonal produce.

Photo: Andrei Diomidov/Shutterstock.com
Address: Sky Tower, Level 52, Victoria Street West, Auckland
Opening hours: Dinner: daily 5pm-9pm. Lunsh: Sat & Sun 11:30am-2pm
Phone: +64 9 363 6000
Internet: skycityauckland.co.nz/restaurants/orbit

Sails Restaurant

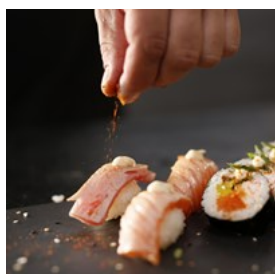


The restaurant, situated in the heart of the Southern Hemisphere's largest marina, Westhaven, overlooking over thousands of yachts. A luxurious interior compliments the breathtaking views in this award-winning restaurant where the menu offers premium beef cuts and quality seafood, cooked with modern techniques while maintaining respect for traditional methods.

Photo: zkruger/Shutterstock.com
Address: 103-113 Westhaven Drive, Westhaven Marina, Auckland
Phone: +64 9 378 9890

Internet: sailsrestaurant.co.nz

Gion Japanese Restaurant



Named after an ancient district in Kyoto, Gion is a stylish, chic restaurant in the trendy Parnell area.

Traditional sushi and inventive Japanese

cuisine is served in a relaxing and warm environment. On the menu, you will find dishes like squid ring tempura, beef teriyaki and salmon sashimi.

Photo: Robert Przybysz/Shutterstock.com

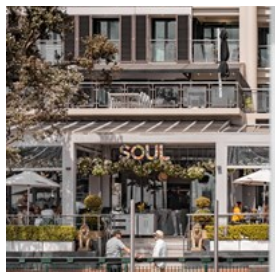
Address: 168 Parnell Road, Auckland

Opening hours: Tue-Sat 11:45am-2:30pm / 5:45pm-late; Sun & Mon closed

Phone: +64 9 379 3344

Internet: www.gion.co.nz

Soul Bar & Bistro



Soul's open air style dining is very popular among local business luncheons and international guests alike.

The bistro prides itself on

using the finest and freshest local produce, where seafood is an important ingredient. Grilled snapper, seared tuna but also meat dishes like pork belly schnitzel and roast lamb rack are all on the menu.

Photo: Caramel/unsplash

Address: Corner Lower Hobson Street & Customs Street West, Auckland

Opening hours: Daily 11am-late

Phone: +64 9 356 7249

Internet: soulbar.co.nz

Email: enquiries@soulbar.nz

Sid at The French Cafe



This French Café is consistently rated as the best fine dining restaurant in Auckland.

The décor is intimate and sophisticated, and the

food demonstrates owner and Chef Simon

Wright's total dedication to detail and quality.

The menu offers contemporary European cuisine with fresh New Zealand ingredients and the wine list encompasses the best local labels as well as fine French wines.

Photo: stockcreations/Shutterstock.com

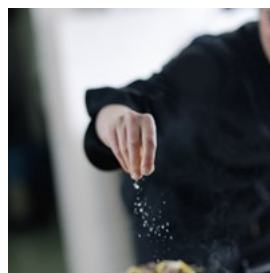
Address: 210 Symonds Street, Auckland

Phone: +64 9 377 1911

Internet: thefrenchcafe.co.nz

Email: thefrenchcafeoffice@xtra.co.nz

The Engine Room



The Engine Room, on Auckland's Northcote Point, is a modern European restaurant set in a classic art deco building. The food is a

blend of international peasant cuisines, modern bistro and revisited bistro classics. The local restaurant was the supreme winner of the 2007 Metro Restaurant of the Year awards.

Photo: dotshock/Shutterstock.com

Address: 115 Queen Street, Auckland

Opening hours: Tue-Sat from 5pm, Mon & Sun closed

Phone: +64 9 480 9502

Internet: www.engineerroom.net.nz

Email: customers@theengineerroom.net.nz

Blue Elephant Thai Restaurant



The authentic tasty Thai food and the friendly service are what attract both locals and tourists to visit the restaurant. It is located in a cosy courtyard, down a small alley in Parnell. The fresh food is beautifully presented and make sure to get here with an empty stomach since the staff serves good sized portions.

Photo: JoannaTkaczuk/Shutterstock.com
Address: 237 Parnell Road, Auckland
Phone: +64 9 358 3095
Internet: blueelephant.co.nz

Oh Calcutta



Take a culinary journey of flavours and colours at this Indian restaurant where quality is not compromised. In fact Oh Calcutta has been the winner of a number of Auckland Restaurant awards.

Photo: neil langan/Shutterstock.com
Address: 149-155 Parnell Road, Parnell, Auckland
Opening hours: Tue-Fri noon-late, Sat & Sun 5pm-late, Mon closed
Phone: +64 9 377 90 90
Internet: ohcalcutta.co.nz
Email: greatfood@ohcalcutta.co.nz

Casita Miro



Overlooking idyllic vineyards and Onetangi Bay, Casita Miro on Waiheke Island offers a serene spot to relish fine food and wines. This laid-back venue is known for its Spanish culinary

delights, particularly tapas, served in a convivial shared dining setting. Open for lunch and weekend dinners, Casita Miro makes for an exceptional social dining experience.

Photo: Bernd Juergens/Shutterstock.com
Address: 3 Brown Road, Onetangi, Auckland
Phone: +64 9 372 7854
Internet: www.casitamiro.co.nz
More Info: Bookings are highly recommended

Tony's Lord Nelson Restaurant



Lord Nelson started as a simple Kiwi steakhouse over 38 years ago and has expanded ever since. This popular restaurant serves some of the best

succulent steaks in town but also offers fresh seafood, lamb, venison and chicken. The attentive staff serves big portion, so make sure to get here with an empty stomach.

Photo: verca/Shutterstock.com
Address: 37 Victoria Street, Auckland
Opening hours: Dinner: daily 5pm-10pm. Lunch: Fri noon-2:30pm
Phone: +64 9 379 4564
Internet: www.lordnelson.co.nz
Email: tonys@lordnelson.co.nz

Sal's Authentic New York Pizza



The name says it all, when dining here you will for sure get a full NY pizzeria experience, everything from the smell, the ovens, cosy

booths and the vibrant ambiance will transport you to the Big Apple. Even all of their base ingredients are imported to New Zealand like Wisconsin mozzarella, California tomatoes, New York State milled flour, pepperoni, and

meatballs.

Photo: Brent Hofacker/Shutterstock.com

Address: 49 Fort Street, Auckland

Phone: +64 9 379 7257

Internet: www.sals.co.nz

Email: getintouch@sals.co.nz

More Info: Sal's is a chain with several locations

Pocha



Pocha restaurant is a delightful embodiment of a Korean "Pojangmacha" or "tent wagon", where food and friendships are shared. With its generous

servings and varied menu, Pocha in Chancery Square is an iconic spot in Auckland's CBD for Korean cuisine. Popular dishes include Almond Krunch Fried Chicken, Beef Brisket Soybean Stew, and Spicy Rice Cakes, each promising a unique blend of flavours that create a comforting and satisfying dining experience. Whether you're winding down after work or preparing for a night out, Pocha's casual and vibrant atmosphere is perfect for a hearty Korean feast.

Photo: Caramel/unsplash

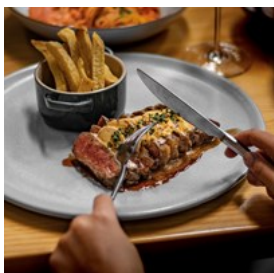
Address: 50 Kitchener Street, Auckland CBD

Phone: +64 9 309 2342

Internet: pocha.co.nz

Email: hyeonah@pochagroup.co.nz

Ampersand Eatery



Ampersand Eatery, nestled in the vibrant Orakei Bay Village, is a delightful spot open from dawn till dusk. With a passion for all things

delicious, Chef Mikey Newlands crafts dishes using fresh, seasonal ingredients. At the heart of the eatery, you'll find a bustling bar serving your

favourite beverages at any time of the day. For coffee connoisseurs, there's the 'Espresso Workshop Roastery', ready to meet all your brew needs. Enjoy their great coffee, homemade sausage, and the highly recommended breakfast burrito in a welcoming atmosphere.

Photo: Caramel/unsplash

Address: Orakei Bay Village, 4/228 Orakei Road, Orakei, Auckland

Opening hours: Mon & Tue 8am-4pm, Wed-Fri 8am-late, Sat & Sun 8am-late

Phone: +64 9 522 9503

Internet: www.ampersandeatery.nz

CAFES



[wavebreakmedia/Shutterstock.com](https://www.wavebreakmedia.com)

Sit back and relax over a cup of coffee or tea, while watching the world go by in one of Auckland's many inviting cafes. Unique cafes are dotted around the town so you will easily find one when you are craving for a hot beverage or something sweet, like a fresh baked cake!

Dizengoff



Minimalist in design, this cute cafe specialises in breakfast and lunch, it has a diverse menu of char-grilled vegetables, bagels and Jewish salads.

Dizengoff, attracts a diverse crowd of locals and the fashion conscious.

Photo: Maxim Khytra/Shutterstock.com

Address: 256 Ponsonby Road, Auckland

Opening hours: Mon-Wed 6:15am-2pm, Thu & Fri
6:15am-3pm, Sat & Sun 6:30am-3pm

Phone: +64 9 360 0108

Internet: www.instagram.com/dizengoffponsonby

Email: dizengoffponsonby@gmail.com

Rosie



This is a trendy and yet a casual neighbourhood eatery, serving breakfast, lunch and dinner in a relaxed atmosphere. The café is nestled in

suburban Parnell across from the well-known Rose Gardens and is very popular among the locals. Try the chocolate and coconut drink, a delicious combo that can't go wrong.

Photo: Sofia Andreevna/Shutterstock.com

Address: 82 Gladstone Road, Parnell, Auckland

Opening hours: Sat-Tue 6:30am-3pm, Wed-Fri 6:30am-late

Phone: +64 9 369 1182

Internet: www.rosieparnell.nz

Email: rosie@hipgroup.co.nz

The Brunchery



Superb coffee and a variety of breakfast, brunch and lunch options make this busy cafe very popular amongst local Ponsonby and Grey Lynn

residents. In addition, you can find freshly squeezed juices and smoothies on the menu and it all can be enjoyed in a casual, vibrant atmosphere.

Photo: Natalia Klenova/shutterstock

Address: 318 Richmond Road, Auckland

Opening hours: Mon-Fri 6:30am-3pm, Sat & Sun 7am-3pm

Phone: +64 9 360 5559

Internet: www.thebrunchery.co.nz

Takapuna Beach Café



Nestled on the beachfront, Takapuna Beach Café presents an array of fresh, wholesome meals from an all-day menu, thoughtfully

crafted with locally sourced ingredients. Adding a sweet note to your dining experience, the café also offers a variety of delicious homemade gelato. With its scenic location and appetizing menu, it promises a delightful culinary journey by the sea.

Photo: YanLev/Shutterstock.com

Address: 22 The Promenade, Takapuna, Auckland

Opening hours: Daily 6:30am-6pm

Phone: +64 9 484 0002

Internet: www.takapunabeachcafe.co.nz

Email: takapunabeachcafe@hipgroup.co.nz

Giapo



If you are a big fan of ice cream, then do not miss this ice cream heaven, Giapo, where they serve original ice cream

flavours. The owner has taken ice cream to a completely new level, experimenting, using art and science to create ice cream masterpieces. You almost need to pop in to see what all the fuss is about; it will be a gastronomical ice cream experience you will not forget.

Photo: Anna Mente/Shutterstock.com

Address: 12 Gore Street, Auckland CBD

Phone: +64 9 550 3677

Internet: www.giapo.com

Email: giapo@giapo.com

Remedy Coffee



Situated in the city centre, opposite the Civic Theater, Remedy Coffee has an inner city vibe and is most of the time packed with regulars and

delighted newcomers. Free WiFi is available as well as board games and an old school arcade machine. On the menu, you will find silky smooth coffee including sandwiches, wraps, bagels and much more.

Photo: CandyBox Images/Shutterstock.com

Address: 1 Wellesley Street West, Auckland

Opening hours: Mon-Fri 6:30am-2:30pm, Sat & Sun 8am-2pm

Phone: +64 9 377 1030

Internet: www.instagram.com/remedycoffeenz

Email: remedycoffee@hotmail.co.nz

Little & Friday



It is all about pleasuring your sugar cravings when entering this cosy cafe that is so popular among many Aucklanders. Here you can sink your teeth

into fresh pies, tasty pastries, doughnuts and cakes, which are all handmade from scratch.

Photo: beornbjorn/Shutterstock.com

Address: 232 Ponsonby Road, Ponsonby, Auckland

Opening hours: Wed-Sat 8am-4pm, Sun 9am-4pm

Phone: +64 9 489 8527

Internet: www.littleandfriday.com

Email: hello@littleandfriday.com

More Info: Little & Friday has a second location in Newmarket

Chocolate Boutique Cafe



The Chocolate Boutique, a charming union of chocolaterie and cafe, is a must-visit destination for dessert lovers.

Experience the

tantalizing selection of sweet treats and desserts, all served in an atmosphere reminiscent of a European cafe. Indulge in their globally-acclaimed Italian denso hot chocolate, or savour the refreshingly delicious iced chocolate drink in this gourmet chocolate shop.

Photo: Africa Studio/Shutterstock.com

Address: 1/323 Parnell Road, Auckland

Opening hours: Tue-Sun 11am-9:50pm, Mon 6pm-9:50pm

Phone: +64 9 377 8550

Internet: chocolateboutique.co.nz

Email: enquiries@chocolateboutique.co.nz

Atomic Coffee Roasters



Atomic Coffee Roasters is a coffee lover's haven nestled in the city centre. This delightful cafe, known for roasting its own beans, serves up

quality coffee at a fair price. They offer a range of coffee experiences, including a unique tasting tray featuring espresso, cold brew and piccolo. Complement your coffee with their scrumptious food options like the light yet satisfying Huevos Rancheros or a blueberry bran muffin with a touch of white chocolate.

Photo: Caramel/unsplash

Address: 70 Shortland Street, Auckland CBD

Opening hours: Mon-Fri 7am-3pm, Sat & Sun closed

Phone: +64 800 286 642

Internet: atomiccoffee.co.nz

More Info: Atomic Coffee Roasters has four locations in Auckland

Lieutenant Coffee Bar & Eatery



Bringing ambition and innovation to the fore, Lieutenant Coffee Bar and Eatery is a charming spot offering a carefully curated menu of seasonal dishes and excellent small batch coffee. The tastefully modern cafe not only serves nourishing meals but also features a cabinet daily replenished with fresh sandwiches and salads. Renowned for their fascinatingly unique omelette and delicious coffee, Lieutenant is also praised for its accommodating staff and peaceful vibe.

Photo: Caramel/unsplash

Address: Commercial Bay, Level 1, 2/7 Queen Street, Auckland CBD

Opening hours: Mon-Fri 7am-4pm, Sat & Sun 8am-4pm

Phone: +64 9 300 5056

Internet: www.lieutenant.nz

BARS & NIGHTLIFE



Shaun Jeffers/Shutterstock.com

Kiwis are a relaxed, friendly, fun-loving people, and relaxing with a drink is an integral part of the culture here. Whether you are looking for an intimate venue for quiet conversation or a lively festive atmosphere, anything your heart desires is easily found. Auckland has truly a lively, energetic nightlife, with something for everyone. Various DJ clubs with any type of music abound,

available every night of the week.

Dida's Wine & Tapas Lounge



Situated in front of Devonport's historic Victoria theatre, Didas Devonport presents a chic and vibrant setting for a memorable dining

experience. It boasts a menu full of innovative small plates, perfectly paired with an extensive list of local and imported wines. Built on a site steeped in family history, Didas offers European-style hospitality in a laid-back atmosphere. An ideal location for a pre-movie meal, late afternoon beverage, or a catch-up with friends.

Photo: Kichigin/Shutterstock.com

Address: 60 Jervois Road, Ponsonby, Auckland

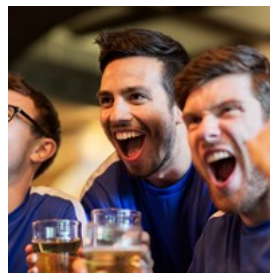
Opening hours: Tue-Sat 3pm-10pm, Sun & Mon closed

Phone: +64 9 376 2813

Internet: www.didaswinelounge.co.nz

Email: dida@glengarry.co.nz

The Fox



The Fox is your typical sports bar, located in the heart of Auckland's stunning Viaduct Harbour. Claimed to be one of the best places to

watch sport, a place where all the major international and New Zealand sports are shown. The atmosphere is always on top and you can come here for lunch or dinner, either way you will not regret your choice.

Photo: Syda Productions/Shutterstock.com

Address: 85-87 Customs Street West, Auckland

Opening hours: Mon-Thu noon-10pm, Fri & Sat 11am-close, Sun 11am-10pm

Phone: +64 9 553 4995

Internet: goodspiritshospitality.co.nz/the-fox

Email: TheFox@gsh.co.nz

The Sugar Club



Take the elevator 53 floors up and you will find this chic bar with a stunning view across the vibrant city of Auckland and with a decor that

reminds of the 1930s Art Deco Italy. Have a delicious cocktail with an exclusive New Zealand twist, paired with small seasonal plates.

Photo: [wavebreakmedia/Shutterstock.com](https://www.shutterstock.com/photo/wavebreakmedia)

Address: Skytower 72 Victoria Street West, Auckland

Opening hours: Dinner: Tue-Sat 5pm-10pm. Bar: Tue-Sat 4pm-close

Phone: +64 9 363 6365

Internet: skycityauckland.co.nz/restaurants/the-sugar-club

Email: enquiries@thesugarclub.co.nz

Brew on Quay



Brew on Quay was opened by three close friends with the focus on a friendly atmosphere, ambience, fine food and the best brews. The decor

in every room is different with influences from around the world, this because they want everyone who visits them to feel at home.

Photo: [levgenii Meyer/Shutterstock.com](https://www.shutterstock.com/photo/levgenii)

Address: 102 Quay Street, Britomart, Auckland

Phone: +64 9 302 2085

Internet: brewonquay.co.nz

Email: info@brewonquay.co.nz

Cassette Nine



Cassette Nine has multiple personalities, during the day you can come and grab a burger or a hot dog. At night, this is one of the party places in town with both DJ's and local bands playing. Truly, a fun place that attracts a mix of people of all ages both locals and travellers.

Photo: [sad444/Shutterstock.com](https://www.shutterstock.com/photo/sad444)

Address: 9 Vulcan Lane, Auckland

Opening hours: Tue-Sat 5pm-4am, Sun & Mon closed

Phone: +64 9 366 0196

Internet: www.instagram.com/cassettenine

Email: play@cassettenine.com

Provedor



Known for its relaxed and friendly environment, where every guest can just have fun and be themselves. Provedor is a popular retro spot where a mix of pub anthems, rock and new hits are played to enhance the atmosphere. Pop in, mingle with the locals and party the night away.

Photo: [Zurijeta/Shutterstock.com](https://www.shutterstock.com/photo/Zurijeta)

Address: 139 Quay Street, Auckland

Opening hours: Mon-Fri 10am-1pm / 4pm-10:30pm; Sat closed; Sun 3pm-10:30pm

Phone: +64 9 377 1114

Internet: provedor.co.nz

SKYCITY Auckland Casino



Try your luck at SKYCITY Auckland Casino, open 24 hours a day, seven days a week and offers non-stop fun and excitement for their guests. All the most

popular casino games are housed here including great live entertainment. When the hunger and thirst reminds you, there are great food and bar options here.

Photo: Nata789/Shutterstock.com

Address: Corner Victoria & Federal Street, Auckland CBD

Opening hours: 24 hours a day

Phone: +64 9 363 6000

Internet: skycityauckland.co.nz/casino

Email: enquiries@skycity.co.nz

Ding Dong Lounge



A premier rock bar that attracts business patrons and rockers alike with Rock DJs and weekly live bands. Ding Dong Lounge in Auckland CBD, is a great place with a cool vibe where to enjoy craft beer and snacks while catching up with friends.

Photo: Roman Voloshyn/Shutterstock.com

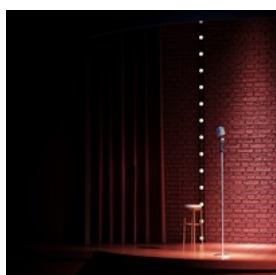
Address: 26 Wyndham Street, Auckland

Opening hours: Tue-Thu 6pm-2am, Fri & Sat 6pm-4am, Sun & Mon closed

Internet: www.dingdongloungez.com

Email: info@dingdongloungez.com

The Classic Comedy Club & Bar



Big (and small) names in the scene come on stage here. Depending on the event, you can experience up to 10 acts per show — a full pool of different styles of jokes and humour. On weekends, you can usually watch the club's top pro comedians in a 2-hour show. Check out the week's schedule and pick a gig.

Photo: Trodler/Shutterstock.com

Address: 321 Queen Street, Auckland

Phone: +64 9 373 4321

Internet: www.comedy.co.nz

Email: info@comedy.co.nz

SHOPPING

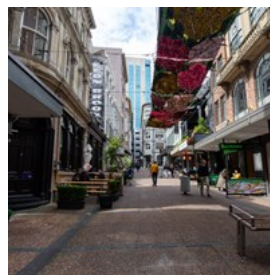


Rawpixel.com/Shutterstock.com

When in Auckland, shopping is a must! Auckland has a wide array of high street fashion, local designers, house wares, crafts and eclectic markets to explore. Discover one of the many vibrant shopping streets where you will find boutique and designer stores, offering some of New Zealand's best-known names as well as top international labels. There are also numerous malls to head for where you basically will find everything you are looking for and also where you can pick some great Kiwi gifts to bring back home for the loved ones. Auckland markets are also a safe bet when looking for that special gift, art, craft or jewellery.

A local note: Karangahape Road is widely known as the abbreviated K'Road.

High Street, Vulcan Lane & O'Connell Street



High Street and the shopping area known as Chancery, are home to many fashion boutiques and designer stores — including Karen Walker, a famous Zealand fashion designer. The area, which also encompasses Vulcan Lane, O'Connell

and Lorne Streets, is popular for trend spotting and streetwear shopping.

Photo: aiyoshi597/shutterstock
Address: High Street, Auckland

Victoria Park Market



Built in 1901, this former city rubbish incinerator had its own electricity-generating steam boilers, heated by the rubbish-burning furnace, and stables for horses which pulled the garbage carts. Since its 1972 restoration, Victoria Park Market is now known for its maze-like collection of stalls, barrows and shops where you can find plenty of arts, crafts, clothes and ethnic specialities. There are more than 85 shops, cafes and restaurants housed here.

Photo: Wirestock Creators/shutterstock
Address: 210 Victoria Street West, Auckland
Opening hours: Daily 9am-6pm
Phone: +64 9 309 6911
Internet: victoriaparkmarket.co.nz

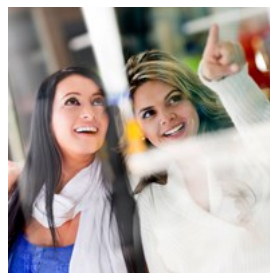
Otara Market



Otara Market contains a mix of all of Auckland's cultures. An endless market selling everything from clothes, crafts, exotic food to jewellery in a lively, energetic, head-spinning atmosphere. Come over here and find some great souvenirs to bring back home.

Photo: Dmitri Ogleznev/Shutterstock.com
Address: Newbury Street, Auckland
Opening hours: Sat 6am-noon
Phone: +64 9 274 0830
Internet: www.otaramarkets.co.nz
Email: o.f.c@xtra.co.nz

Nuffield Street



Nuffield Street in Newmarket, is a boutique-style destination with not only exclusive designer fashion shops, but also restaurants and home decor stores. French Connection, Karen Millen, Mimco and Witchery are just some of the stores located here.

Photo: ESB Professional/Shutterstock.com
Address: Nuffield Street, Auckland
Internet: newmarket.co.nz/meet-me-on-nuffield-street

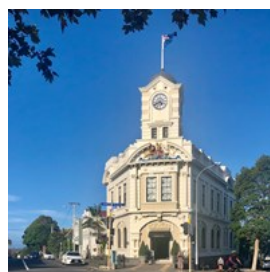
Parnell Shopping



Parnell Village is a historic shopping area five minutes east of the city with charming boutiques and cafes. Here you can explore designer stores, fine art and quirky shops offering everything from clothes, home decor to diamonds. Along Parnell Road, you will find art galleries that house local New Zealand artwork.

Photo: Nguyen/unsplash
Internet: www.parnell.net.nz
Email: info@parnell.net.nz

Ponsonby

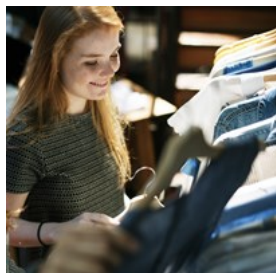


Ponsonby Road is a shopping destination for fashion aficionados and offers an array of clothing, furniture and designer lifestyle shops. Ponsonby is a five minute drive west of the central city with a combination of contemporary shopping and cafe dining. This is a late 19th-century neighbourhood full of wooden

villas!

Photo: Ethan Johnson/unsplash
Address: Ponsonby Road, Auckland
Phone: +64 9 360 9301
Internet: iloveponsonby.co.nz

Sylvia Park Auckland



Ideally located in the heart of Auckland, Sylvia Park Auckland boasts a mix of retail shops, offering everything from fashion, accessories, footwear to beauty and home decor. There are more than 200 stores here, including dining and a cinema complex. A premiere retail and fashion destination, where you will definitely find what you are looking for.

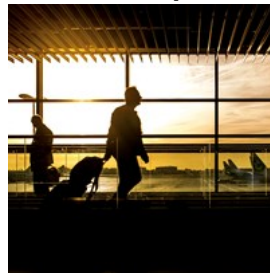
Photo: Rawpixel.com/Shutterstock.com
Address: 286 Mount Wellington Highway, Mount Wellington, Auckland
Opening hours: Mon-Fri 9am-9pm, Sat & Sun 9am-7pm
Phone: +64 9 570 3777
Internet: www.sylviapark.com

TOURIST INFORMATION



Naruedom Yaempongsa/shutterstock

Auckland Airport (AKL)



Auckland International Airport (AKL) services all of Auckland. Located 21 km south of the City Centre and it is easily accessible by bus, shuttle or taxi.

Skybus is Auckland's airport transfer service that runs between Auckland City Centre and Auckland Airport. They operate 24 hours a day and the bus transfer takes about 40-60 min. Tickets can be bought at the Airport Ticket Kiosks (situated by the SkyBus bus stops at the airport) or from the bus driver (cash only). You can also buy your ticket online and at some hotels.

The AirportLink bus carries passengers between Auckland Airport, Puhinui Station and Manukau Bus Station. The 38 bus operates between Auckland Airport and Onehunga via Mangere Town Centre. You will need an AT HOP card to use the AirportLink and 38 bus services

There are only licensed taxi and shuttle companies at the designated taxi ranks at the terminal buildings, all to make sure that you will get a high standard of service. The taxi rank is outside the arrivals area at the international terminal as well as the domestic terminal. You can pre-book or just turn up at the terminal rank.

Photo: Rudy & Peter Skitterians/pixabay
Address: Ray Emery Drive, Māngere, Auckland
Phone: +64 9 275 0789
Internet: www.aucklandairport.co.nz

Passport/Visa



Citizens of Australia and the UK, as well as visa waiver countries, do not need to apply for a visa for short visitor stays, but may need to produce documented proof of onward travel.

Visa waiver countries include the USA and multiple countries across Europe and Asia, Andorra, Argentina, Austria, Bahrain, Belgium, Brazil, Brunei, Bulgaria, Canada, Chile, Croatia, Cyprus, Czech Republic, Denmark, Estonia, Finland, France, Germany, Greece, Hong Kong, Hungary, Iceland, Ireland, Israel, Italy, Japan, South Korea, Kuwait, Latvia, Liechtenstein, Lithuania, Luxembourg, Macau, Malaysia, Malta, Mauritius, Mexico, Monaco, Netherlands, Norway, Oman, Poland, Portugal, Qatar, Romania, San Marino, Saudi Arabia, Seychelles, Singapore, Slovak Republic, Slovenia, Spain, Sweden, Switzerland, Taiwan, United Arab Emirates, Uruguay, and Vatican City.

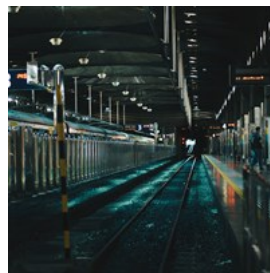
Since 2019, travellers that are visa waiver must request a New Zealand Electronic Travel Authority (NZeTA) prior to travel. It is mandatory for all sea and air arrivals, including transit. The issued authorisation is valid for two years.

Citizens of other countries will need to apply for a visa in advance, which can be done online for solo travellers and in paper format for those travelling with a partner or as a group. The applicant's passport validity in this case will need to last 3 months after the planned departure date.

Photo: mana5280/unsplash

Internet: en.wikipedia.org/wiki/Visa_policy_of_New_Zealand

Public Transport



Public transport in Auckland — New Zealand's largest metropolitan area — comes in three flavours: bus, train and ferry.

Services are all neatly coordinated by Auckland Transport under the AT Metro brand, with the bustling Waitematā railway station serving as the main transport hub.

Buses are the workhorse of Auckland's public transport, accounting for about 70% of all journeys. They generally operate from the wee hours of 6 am until the stroke of midnight. To get around, simply look out for the red, green, or amber buses. With services so frequent, there's little need to keep an eagle eye on the timetable. Just rock up to the relevant bus stop and your chariot will soon arrive. Hop on the red bus (CityLink) for inner-city jaunts, the green (InnerLink) to traverse Auckland's inner city, and the amber (OuterLink) for a tour of Auckland's cosy inner suburbs.

Tickets can be bought directly from the bus driver (cash only), or you can get your hands on the AT HOP smart card online or at a ticket office, such as the Britomart customer service centre.

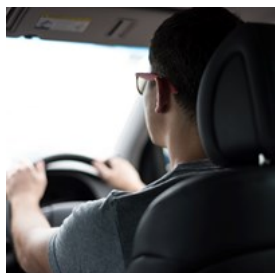
Photo: Dev Benjamin/unsplash

Address: Britomart Transport Centre, 8-10 Queen Street, Auckland

Phone: +64 9 366 6400

Internet: at.govt.nz

Taxi



Numerous taxi companies operate throughout Auckland. Rideshare apps like Uber are a convenient way to find a ride, too. Taxi ranks are found around the city centre. Try Lower Hobson Street, Ferry Building, Britomart and Kitchener Street. Call Auckland Co-op Taxis to order a car by phone.

Photo: Art Markiv/unsplash
Phone: +64 9 300 3000
Internet: www.cooptaxi.co.nz

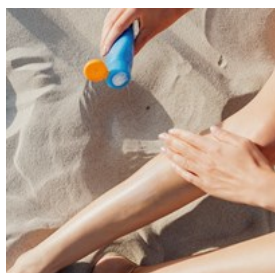
Post



Post offices in Auckland are run by NZ Post, providing several services throughout the city. The offices have a red sign on the outside, with New Zealand Post written on. A centrally located one is Wellesley Street NZ Post & Kiwibank, located on Wellesley Street, close to Aotea Square.

Photo: Diana Light/unsplash
Address: NZ Post Shop, 24 Wellesley Street West, Auckland
Opening hours: Mon-Fri 9am-5:30pm, Sat 9am-1pm, Sun closed
Phone: +64 800 501 501
Internet: www.nzpost.co.nz

Pharmacy



Pharmacies, often referred to as 'chemists' in New Zealand, are typically open during standard retail hours, generally 9 am to 5:30 pm on weekdays. However, hours can extend to late evenings and weekends in larger cities and

shopping centres.

New Zealand's largest pharmacy chains are Unichem and Life Pharmacy, with stores spread nationwide. These pharmacies stock a wide range of over-the-counter medicines, healthcare products, and often provide additional services like flu vaccinations.

Medicines to Midnight is an after-hours pharmacy, open all day until midnight. A fully stocked pharmacy, specialising in medicines, prescriptions and advice.

Photo: Karolina Grabowska/pexels
Address: Medicines to Midnight, 160 Broadway Newmarket, Auckland
Opening hours: Mon-Sat 9:30am-midnight, Sun 10am-midnight
Phone: +64 9 520 6634
Internet: www.medicinestomidnight.co.nz
Email: medicinestomidnight@xtra.co.nz

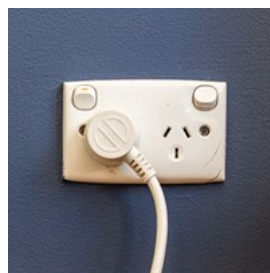
Telephone



Country Code: +64 Area Code: (0)9

Photo: Nguyen/unsplash

Electricity



New Zealand operates on a 230/240V supply voltage and 50Hz frequency. The country uses Type I power plugs, which feature two flat pins forming a 'V' shape, along with a grounding pin. This standard is also commonly used in Australia, Argentina, China, and several Pacific

island nations. Remember to pack a universal adapter if your devices use a different plug type to ensure hassle-free charging.

Photo: Mitchell Luo/unsplash

Population

1.5 million

Currency

New Zealand Dollar (NZD) = 100 cents

Opening hours

Typical hours for shops are 9am–6pm weekdays, with an earlier closing on weekends but many shops stay open late on Thursday and Friday. Banks are usually open hour Monday to Friday 9am–4:30pm.

Internet

www.aucklandnz.com

Newspapers

The New Zealand Herald: www.nzherald.co.nz

National Business Review: www.nbr.co.nz

Sunday News: www.stuff.co.nz/sunday-news

Sunday Star Times: www.stuff.co.nz/sunday-star-times

Emergency numbers

Police, Fire & Ambulance: 111

Tourist information

Auckland i-SITE Visitor Information Centre - SkyCity
Corner of Victoria & Federal Street, Auckland Central, New Zealand

+64 9 365 9918

Open Fri–Mon 10am–3pm, Sat & Sun 9am–4pm



Abbey Street	A4	Grafton Bridge	B4 C4	Parnell Road	D3
Airedale Street	B3	Grafton Road	B4 C3 C4	Paul Street	C3
Albert Street	B2 B3	Graham Street	B2	Pitt Street	B3 B4
Alfred Street	C3	Greys Avenue	B3	Plumer Street	D2
Anzac Avenue	C2 D2	Halsey Street	A2 B1	Princes Street	C2 C3
Aotea Square	B3	Hamer Street	A1	Quay Street	C2 D2
Augustus Terrace	D3	Hayden Street	A3	Queen Street	B3 B4 C2
Bath Street	D3	Heather Street	D3	Ronayne Street	D2 D3
Beach Road	D2	High Street	C2	Sale Street	A2
Beaumont Street	A1 A2	Hobson Street	B2 B3	Seafield View Road	C4
Beresford Street West	A3	Hopetoun Street	A4	Shortland Street	C2
Bowen Avenue	C2	Howe Street	A3	St Benedicts Street	B4
Brigham Street	A1 B1	Ian McKinnon Drive	A4 B4	St Patricks Square	B2
Cancery Street	C2	Jellicoe Street	A1	Stanley Street	D3
Cenotaph Road	D4	Karaka Street	A4 B4	Sturdee Street	B2
Cheshike Street	D3	Karangahape Road	A4	Swanson Street	B2
City Road	B4	Kingstone Street	B2	Symonds Street	B4 C3 D3
Cook Street	A3 B3	Kiosk Road	D4	Te Taou Cres	D2
Customs Street East	C2	Liverpool Street	B3 B4	The Crescent	D4
Customs Street West	B2	Lorne Street	C3	The Strand	D3
Daldy Street	A2	Lovers Lane	D3 D4	Tinley Street	D2
Day Street	A4	Lower Domain Drive	D3	Turner Street	B3
Domain Drive	D4	Madden Street	A1	Tyler Street	C2
Drake Street	A2	Mahuhu Cres	D2	Union Street	A3
Durham Street West	B2 C2	Mayoral Drive	B3	Victoria Street East	C2
Earle Street	D3	Mercury Lane	B4	Victoria Street West	A2 B2
Eden Crescent	C2 D2	Mills Lane	C2	Vincent Street	B3
Edinburgh Street	A4	Mount Street	C3	Wakerfield Street	B3 C3
Eglon Street	D3	Napier Street	A3	Waterloo Quadrant	C2 C3
Elliott Street	B2 B3	Nelson Street	A3 B2 B3	Waverley Street	B3
Fanshawe Street	A2 B2	Newton Road	A4 B4	Wellesley Street East	C3
Football Road	D4	Nixon Street	A4	Wellesley Street West	B2 B3
Fort Street	C2	Ophir Street	A4	Wellington Street	A3
Fox Street	D3	Pakenham Street West	A1 A2	Wolfe Street	B2
France Street	A4	Park Avenue	C4	Wyndham Street	B2
Franklin Road	A2	Park Road	C4	Wynyard Street	C3 D3
Galway Street	C2	Parliament Street	C2 D2	York Street	D3
Gaunt Street	A2	Parnell Rise	D3		