



# Altenburg

Photo: Ulrike Haberkorn/Shutterstock.com



Dimitrios/Shutterstock.com

If you fancy a hand of cards, Altenburg is the place for you: playing cards has been practised here for over 500 years, and the national card game 'skat' was first played here. The town has a history of 1000 years, and boasts an impressive castle set on a rocky outcrop. Buy collapsible top hats on Rossplan Square, and baptise your cards at the Skat fountain: it brings good luck!

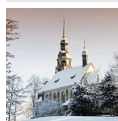


Ulrike Haberkorn/Shutterstock.com



Ulrike Haberkorn/Shutterstock.com

## Featured



### Herzogin-Agnes-Gedächtnisk...

This Memorial Church was built in 1897 from duke Ernst I. in remembrance of ...



### Rote Spitzen

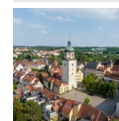
If you want to enjoy a view over the city, you should visit this basilica in...



### Orangery

This baroque building was completed in 1712 and once consisted of three gree...

## Top 5



### Nikolaiviertel

Romance is in the air as you stroll around this attractive part of the town ...



### Castle & Playing Card Museum

You will find the Playing Card Museum inside the castle walls whilst the Car...



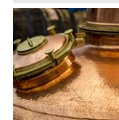
### Lindenau Museum

The Lindenau Museum houses one of Europe's finest collections of Italian Ren...



### State Theater Altenburg

State Theater Altenburg was built in 1869 and was once the Royal Theatre. It...



### Altenburg Brewery and Museum

Experience the Art Nouveau brewing room and get a chance

## THE CITY



photolike/Shutterstock.com

Altenburg is also a town of seven towers, four of which are open to the public and provide excellent views towards Leipzig. The town is known for its cultural programme with over 400 events every year. The former Royal Theatre provides a selection of events from puppets to ballet whilst the castle often hosts music festivals and organ recitals. Altenburg is still a hidden gem of architecture and art. A most astounding variety of buildings from over 1000 years of history compose the lovely old town. The "Rote Spitzen" abbey was founded by Germany's favourite Emperor Barbarossa in 1182 and built by Italian monks as the first brick towers in Germany. Martin Luther preached in the St. Bartholomew church and Bach played the precious baroque organ in the castle church.

The town has Thuringia's largest tennis centre, zoo and lake. Shopping and sightseeing are both popular, and in the evening there is nothing better than stopping for a beer and have something to eat at one of the many inns in town.

Known for its charm and character, the town is very popular with younger and older travellers. Strolling through the old town with its many places and parks is a perfect way of passing a morning or afternoon.

## DO & SEE



Ulrike Haberkorn/Shutterstock.com

Altenburg is rich in sights and history. Here you can stroll around and look at towers, castle, parks and old buildings. The city also offers many interesting museums and those who are interesting in beer there is Altenburg Brewery and Museum.

### Nikolaiviertel



the history and relax with a cup of coffee.

Romance is in the air as you stroll around this attractive part of the town with its many ancient tiny houses. Take your time here to enjoy

Photo: Deutschland Abgelichtet/shutterstock

Address: Nikolaikirchturm, Nikolaiviertel, Altenburg

Internet: [www.thueringen.info/altenburg-nikolaiviertel](http://www.thueringen.info/altenburg-nikolaiviertel)

### Castle & Playing Card Museum



You will find the Playing Card Museum inside the castle walls whilst the Card Fountain is on the old town square. The museum contains a large playing card exhibition and other ducal collections such as antique porcelain and furniture.

You will find the Playing Card Museum inside the castle walls whilst the Card Fountain is on the old town square. The museum contains a large

Photo: Jens Junge/pixabay

Address: Schloss Altenburg, Schloss 2-4, Altenburg

Internet: [www.residenzschloss-altenburg.de](http://www.residenzschloss-altenburg.de)

Email: [info@residenzschloss-altenburg.de](mailto:info@residenzschloss-altenburg.de)

### Lindenau Museum



The Lindenau Museum houses one of Europe's finest collections of Italian Renaissance Art, ceramics and classical statues and is considered one of the most important art museums in East Germany.

Photo: Ulrike Haberkorn/shutterstock

Address: Interim location: Kunstgasse 1, Altenburg

Phone: +49 3447 8955 430

Internet: [www.lindenau-museum.de](http://www.lindenau-museum.de)

Email: [info@lindenau-museum.de](mailto:info@lindenau-museum.de)

More Info: The museum closed for major renovation in 2020, while opening an interim location for visitors.

### State Theater Altenburg



State Theater Altenburg was built in 1869 and was once the Royal Theatre. It is well worth a look inside as it has a beautiful historical interior.

Approximately 165,000 people visit the theatre annually.

Photo: torstengrieger/shutterstock

Address: Landestheater Altenburg, Theaterplatz 19, Altenburg

Phone: +49 3447 585160

Internet: [theater-altenburg-gera.de](http://theater-altenburg-gera.de)

Email: [info@theater-altenburg-gera.de](mailto:info@theater-altenburg-gera.de)

### Altenburg Brewery and Museum



Experience the Art Nouveau brewing room and get a chance to sample some of the local beer. Special evenings mean you can try a few samples and enjoy some local food. For beer connoisseurs there is a chance to drink as much beer as you can in an hour, quite a challenge!

Photo: mailsonpignata/Shutterstock.com

Address: Brauereistraße 20, Altenburg

Opening hours: Mon-Thu 7h-12h30 & 13-16h, Fri 7h-12h30, Sat-Sun closed

Phone: +49 3447 312 90

Internet: [www.brauerei-altenburg.de](http://www.brauerei-altenburg.de)

Email: [info@brauerei-altenburg.de](mailto:info@brauerei-altenburg.de)

### Orangery



This baroque building was completed in 1712 and once consisted of three greenhouses. Nowadays, The structure is available for reservation in occasion of special events, such as conferences, cultural meeting and exhibitions. It also features an elegant cafeteria and tea house. There is also a small park in front of the orangery if you would like to take a walk.

Photo: torstengrieger/Shutterstock.com

Address: Orangerie, Altenburg

Opening hours: Opening hours vary; check on the website

Internet: [www.teehaus-altenburg.de](http://www.teehaus-altenburg.de)

### Herzogin-Agnes-Gedächtniskirche



This Memorial Church was built in 1897 from duke Ernst I. in remembrance of his wife Agnes. Very special are the windows which hint at the birthday month of Agnes.

Photo: Ulrike Haberkorn/shutterstock

Address: Agneskirche Altenburg, Hausweg 4, Altenburg

Internet: [www.evangelische-kirchgemeinde-altenburg.de](http://www.evangelische-kirchgemeinde-altenburg.de)

Email: [stadtkirchenamt@gmx.de](mailto:stadtkirchenamt@gmx.de)

### Rote Spitzen



If you want to enjoy a view over the city, you should visit this basilica in the heart of Altenburg. The red spires are the landmarks of Altenburg and were built and were built between 1165 and 1172 under the supervision of the emperor Frederick Barbarossa and Udo von Naumburg. They represent one of the most beautiful example of Thuringian Romanesque Architecture. Here is also located the Castle and Playing Card Museum and the Card Fountain.

Photo: knipsdesign/shutterstock.com

Address: Schloss 2-4, Altenburg

Opening hours: Fri-Sun 12h-17h

Phone: +49 3447 512 710

### DINING



*Karl Allgaeuer/Shutterstock.com*

Mingle with the locals and learn about the many local festivals to enjoy some regional fare.

German food is always wholesome and there are always plenty of takeaway stalls in the town. Pork is a popular meat and so is chicken, and Sauerkraut with bratwurst is a must try. The local specialities include goat cheese, "Mutzbraten" roasted pork chops with a dark coat of herbs, "Rostbrätel" a pork steak with onion sauce and minced potatoes, and "Bierfleisch" is pork chops sautéed with dark beer.

### Gasthaus Gesecus



Gasthaus Gesecus is a very small Altenburg inn that is famous for their regional dishes cooked by the owner. It is a chance to step back in time and imagine Germany in another life.

Photo: AS Food studio/Shutterstock.com

Address: Topfmarkt 2, Altenburg

Opening hours: Mon-Fri 10h30am-14h30 & 17h-20h, Wed 10h30am-14h30

Phone: +49 344 731 50 66

Internet: [www.gasthaus-gesecus.de](http://www.gasthaus-gesecus.de)

Email: [info@gasthaus-gesecus.de](mailto:info@gasthaus-gesecus.de)

### Dünewald Fisch



The popular local fish monger loves to cook his fresh fish for his guests during lunch and early evening. No set menu, but whatever arrives that day together with a good glass of wine. This is an ideal place for a long chat.

Photo: Zitzke/Shutterstock.com

Address: Weibermarkt 2, Altenburg

Opening hours: Mon-Fri 8h-18h, Sat 8h-13h

Phone: +49 3447 314 000

Internet: [www.duenewald-fisch.de](http://www.duenewald-fisch.de)

### Kulisse Inh. Meier Kathrin



Kulisse Inh. is a good place to meet people. There is an enormous bar and large portions of good food which makes this a popular place to eat. Hot food is served from 17h until 24h every day.

Photo: miroha141/Shutterstock.com

Address: Theaterplatz 18, Altenburg

Opening hours: Daily 17h-24h

Phone: +49 3447 500 939

Internet: [www.kulisse-abg.de](http://www.kulisse-abg.de)

Email: [info@kulisse-abg.de](mailto:info@kulisse-abg.de)

### Ratskeller Altenburg



Ratskeller Altenburg is a town house inn which is part of the 16th century town hall. Located in the centre of the town, it offers lots of regional specialities served in four different rooms.

Photo: hlphoto/Shutterstock.com

Address: Markt 1, Altenburg

Opening hours: Daily 10h-23h

Phone: +49 3447 311 226

Internet: [www.ratskeller-altenburg.de](http://www.ratskeller-altenburg.de)

Email: [info@ratskeller-altenburg.de](mailto:info@ratskeller-altenburg.de)

### Restaurant Brunello



Restaurant Brunello's menu focuses on Mediterranean specialities and changing theme dishes in a former court official's large villa. Beautiful views of the castle. Sitting in the winter garden, on the terrace or the panelled salon you will feel like transported back 100 years.

Photo: luckyraccoon/Shutterstock.com

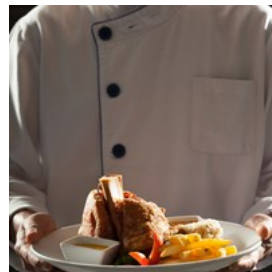
Address: Friedrich-Ebert-Strasse 14, Altenburg

Phone: +49 3447 890 077

Internet: [www.brunello-altenburg.de](http://www.brunello-altenburg.de)

Email: [info@brunello-altenburg.de](mailto:info@brunello-altenburg.de)

### Riebeck-Stübl



Located in Hotel am Rossplan, this cosy dark panelled inn is the favorite place for all card players who play Germany's national card game "Skat" over jugs of beer and hearty local dishes.

Photo: Piti Tan/Shutterstock.com

Address: Am Rossplan 8, Altenburg

Opening hours: Mon-Thu 16h-23h, Fri-Sun 11h-23h

Phone: +49 3447 56 610

Internet: [www.hotel-rossplan.com](http://www.hotel-rossplan.com)

More Info: Kitchen closes at 22h

### Steakhouse Theatercafé



Steakhouse Theatercafé is located just opposite the theater and with an impressive view up to the castle. They offer a good choice of steaks and other meat menus at reasonable prices.

Photo: Africa Studio/Shutterstock.com

Address: Theaterplatz 9, Altenburg

Opening hours: Mon 17h-23h, Tue closed, Wed-Thu 17h-23h, Fri-Sat 17h-24h, Sun 11h30-14h, 17h-23h

Phone: +49 3447 51 58 69

Internet: [www.steakhaus-altenburg.de](http://www.steakhaus-altenburg.de)

### Egyptian Restaurant Pharao



Do you want to get a feeling of the Arabian Nights? At the Pharao you will experience a feast for the senses.

Every Friday and Saturday there are belly dance performances.

Photo: its\_al\_dente/Shutterstock.com

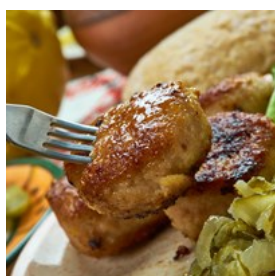
Address: Heinrich-Heine-Straße 1, Altenburg

Phone: +49 3447 50 10 80

Internet: [www.restaurant-pharao.de](http://www.restaurant-pharao.de)

Email: [m.altmaizeh@web.de](mailto:m.altmaizeh@web.de)

### Gassenhauer



The Gassenhauer is a Schnitzel restaurant. The dishes are prepared with much care and the owner as come up with a wide range of delicious

creations.

Photo: Fanfo/Shutterstock.com

Address: Pauritzerstraße 39, Altenburg

Opening hours: Mon-Tue 17h-22h, Wed-Thu closed, Fri-Sat 17h-23h45, Sun 17h-22h

Phone: +49 3447 51 11 39

Internet: [www.gassenhauer.cwsurf.de](http://www.gassenhauer.cwsurf.de)

### CAFES



NADKI/Shutterstock.com

Take your time to find the true gems in the city: they will take you back to the old times of Germany.

### Cafe Domizil



Cafe Domizil serves delicious home-made cakes in a historical setting. Here you can have breakfast or light lunch. Open from

8am-6pm in the early evening. It has a terrace on the main market square.

Photo: Julia Lototskaya/Shutterstock.com

Address: Markt 8, Altenburg

Opening hours: Daily 8h-19h

Phone: +49 3447 371 080

Internet: [www.cafe-domizil.de](http://www.cafe-domizil.de)

Email: [maternus.walter@freenet.de](mailto:maternus.walter@freenet.de)

### Laudenbach



As one of the oldest bakeries in Altenburg, Laudenbach focuses on traditional bread and cakes and offers customers high quality

products perfected over more than two generations. You are definitely in the right place to have a taste of real Thüringer Blechkuchen bread and see for yourself how Altenburg's bakery tradition is far from fading out.

Photo: Karl Allgaeuer/Shutterstock.com

Address: Sporenstraße 11, 04600 Altenburg

Opening hours: Mon-Fri 6h30-18h, Sat 6h30-16h, Sun 1h-17h

Phone: +49 344 750 97 35

Internet: [www.laudenbach-gera.de](http://www.laudenbach-gera.de)

### Backhaus Hennig



Backhaus Henning has become appreciated for its multi-faced nature, since it boasts not only good good cakes and coffee, but also unique hand-made ice cream and its own fresh bread, baked every day and served oven-to-table.

Photo: Stolyevych Yuliya/Shutterstock.com

Address: Kornmarkt 7-8, 04600 Altenburg

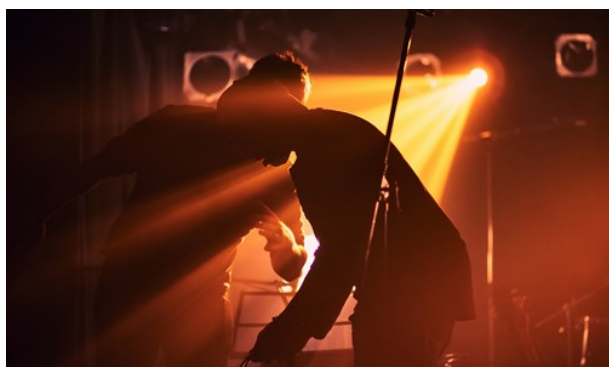
Opening hours: Mon-Fri 7h-19h, Sat 7h-17h, Sun 7h30-18h

Phone: +49 3447 509725

Internet: [www.backhaus-hennig.de](http://www.backhaus-hennig.de)

Email: [kontakt@backhaus-hennig.de](mailto:kontakt@backhaus-hennig.de)

### BARS & NIGHTLIFE

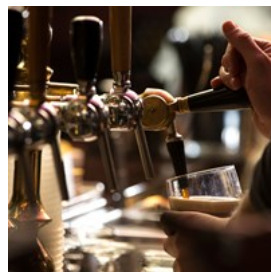


Takahiro Sakamoto/unsplash

Altenburg hosts several shows, special parties, festivals and concerts throughout the year, and many restaurants and bars organise theme

evenings, dances or house parties. Young people often start their evening in Altenburg and move on towards Leipzig or Zwickau.

### Finnegan's Irish House



An Irish pub, where ever you are, is always a safe bet for a cold, good tasting beer. At Finnegan's they also serve traditional Irish food and have a menu of 40 different types of whiskey.

Photo: IsabellaO/Shutterstock.com

Address: Rosa-Luxemburg-Strasse 2, Altenburg

Opening hours: Mon 20h-24h, Tue-Fri 18h-24h,

Phone: +49 3447 488 5274

### Wein- und Getränkevertrieb Elke Häfner



80 different spirits, whiskeys and liquors which you can select from and take back home. At the store you can relax with a great tasting sparkling glass of champagne or wine.

Photo: 5PH/Shutterstock.com

Address: Leipziger Straße 31, Altenburg

Opening hours: Mon-Fri 9h-18h, Sat 9h-24h, Sun closed

Phone: +49 3447 511 037

Internet: [www.wein-whisky-haefner.de](http://www.wein-whisky-haefner.de)

Email: [info@wein-whisky-haefner.de](mailto:info@wein-whisky-haefner.de)

### Alwo Diskothek



Located a bit outside the center of Altenburg, Alwo Diskothek is a must-go for groups of young people looking for some dancing. Housed in an old cellar with vaults of red brick, Alwo Diskothek

offers a relaxing lounge ambiance until late afternoon, after which it transforms into a vibrant night club with DJs and soft lighting.

Photo: Jacob Lund/Shutterstock.com

Address: Werksiedlung 31, 04603 Nobitz

Internet: [www.alwo-club.de](http://www.alwo-club.de)

Email: [info@alwo-club.de](mailto:info@alwo-club.de)

## SHOPPING



Farknot Architect/shutterstock

There are plenty of opportunities to purchase local wares and beverages together with beers and schnaps at the Brewery Museum. The main shopping area is on and around the five historical marketplaces of the old town, all within easy reach. Altenburg Liqueur can be obtained in many different varieties from the Distillery. Altenburg mustard comes in more than 150 varieties and is available from the Mustard Shop on Moritzstraße.

Altenburg playing cards and special editions of the "Spielkartenladen" can be found in the Tourist Information in the main market place. This is also the largest souvenir shop with an extensive choice of regional specialities and products such as the famous goat cheese. Wednesdays and Saturdays are market days with farmers bringing their goods to sell. Historical books and antiquities can be purchased in the many little shops on the cobble-stoned streets of old town around the market square. Local

pottery can be bought in several workshops in Altenburg and the nearby villages.

### Bahnhof Center Altenburg



The Bahnhof Center Altenburg is located in the train station of Altenburg. Here you can find several shops and cafés.

Photo: Halfpoint/Shutterstock.com

Address: Wenzelstraße 43, Altenburg

Opening hours: Mon-Sat 9h-20h, Sun closed

Phone: +49 3447 513 454

Internet: [www.bahnhof-center-altenburg.de](http://www.bahnhof-center-altenburg.de)

Email: [cev.altenburg@cev.de](mailto:cev.altenburg@cev.de)

### Altenburger Senf & Feinkost



Senf is German for mustard. In this lovely shop you can buy a lot of mustard creations among other local delicacies.

Photo: pogonici/Shutterstock.com

Address: Remsaer Straße 21a, Altenburg

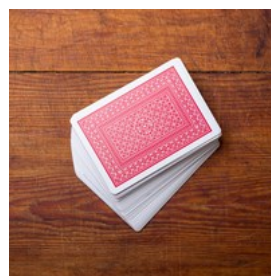
Opening hours: Mon-Fri 9h-16h

Phone: +49 3447 85 260

Internet: [www.senf.de](http://www.senf.de)

Email: [info@senf.de](mailto:info@senf.de)

### Altenburger Spielkartenladen



This shop has a wide range of different playing cards to choose from. You are welcome to find out how many there actually are!

Photo: Gilmanshin/ Shutterstock.com

Address: Markt 17, Altenburg

Opening hours: Mon-Fri 9am-6pm. Sat 10am-2pm

Phone: +49 3447 51 28 023  
Internet: [www.spielkartenladen.de](http://www.spielkartenladen.de)  
Email: [mail@spielkartenladen.de](mailto:mail@spielkartenladen.de)

### Schnuphase'sche Buchhandlung



If you are looking for a good read, you should visit this cozy bookstore. They also have a well-assorted range of regional literature.

Photo: [George Rudy/Shutterstock.com](https://www.shutterstock.com)  
Address: Kronengasse 5, Altenburg  
Opening hours: Mon-Fri 9h-18h, Sat 9h-13h  
Phone: +49 3447 311351  
Internet: [www.schnuphase.buchhandlung.de](http://www.schnuphase.buchhandlung.de)

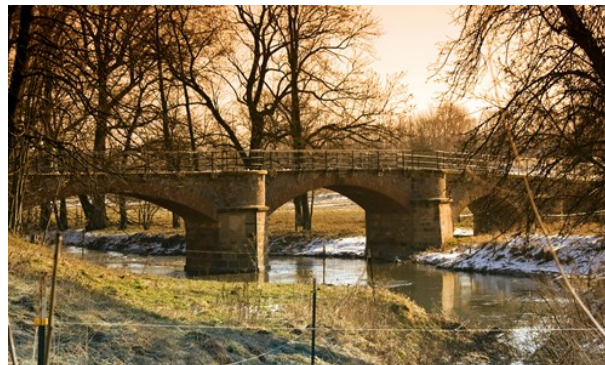
### Chocolaterie - Heike Bicking



Heike Bicking focuses on high quality chocolate and also boasts one of the largest assortments of fine tea and wine brands. Step in and choose what you prefer from a huge selection of products.

Photo: [Smallblackcat/Shutterstock.com](https://www.shutterstock.com)  
Address: Baderei 3, 04600 Altenburg  
Opening hours: Daily 9h30-18h  
Phone: +49 3447 4367  
Internet: [www.chocolaterie-bicking.de](http://www.chocolaterie-bicking.de)

## TOURIST INFORMATION



*Ulrike Haberkorn/Shutterstock.com*

### Airport Leipzig-Altenburg



The airport is a small former military airport eight kilometres from Altenburg. There is a connecting bus to Leipzig which is 50 km away, a link from the airport to Altenburg train station and from the airport to Leipzig train station. The train Altenburg to Leipzig is hourly. A local travel ticket on the MDV for the larger Leipzig region including Altenburg is available.

Photo: [Juan Garces](https://www.shutterstock.com)  
Address: Flugplatz, Nobitz  
Phone: + 49 3447 59 00  
Internet: [www.leipzig-altenburg-airport.de](http://www.leipzig-altenburg-airport.de)  
Email: [info@leipzig-altenburg-airport.de](mailto:info@leipzig-altenburg-airport.de)

### Passport/Visa



Germany can be visited visa-free for up to 90 days by citizens of most European countries, Australia, New Zealand, Japan, South Korea, Taiwan, Malaysia, Israel, UAE and most countries in America. If you are unsure whether or not you need to apply for a visa, we

recommend contacting the embassy or consulate in your country. International (non-Schengen) travelers need a passport that is valid for at least 3 months after the end of their intended trip in order to enter the Schengen zone. Citizens of Schengen countries can travel without a passport, but must have a valid ID with them during their stay.

Photo: TukTuk Design

### Best time to visit



Due to its location in central Germany, Altenburg's weather is typical of of central European continental climate: with lots of rain

and snow during the winter, the city is characterized by mild and sunny summers. The period between late spring and early Autumn (approximately from the end of May to the first half of September) may be the best moment to enjoy Altenburg and to explore the magnificent countryside around the city.

Photo: VectorA\_

### Public Transport



The MDV is a local public transport group which runs buses and trains in the wider Leipzig area and also to Altenburg.

Trains to Leipzig run every hour and take 35 minutes to the main station in Leipzig. From there trains go to Weimar, to Dresden and to Berlin. Early in the morning there is a special train from Altenburg to Berlin directly. Trains also run towards the south from the town.

Photo: Pierre-Luc Auclair  
Internet: [www.mdv.de](http://www.mdv.de)

### Taxi

Stephan Stötzner



Photo: Taxi  
Phone: +49 3447 579 494  
Internet: [www.taxi-altenburg.de](http://www.taxi-altenburg.de)

### Post

German post office



Photo: Andy Fuchs  
Address: Kanalstraße 16, Altenburg  
Phone: +49 573 824 5266  
Internet: [www.postofficehours.net](http://www.postofficehours.net)

### Pharmacy

Pharmacies share 24 hour duty. Daily information is also in the daily newspaper. Emergency treatment is available at the



emergency hospital - Kreiskrankenhaus. Information is also in the daily newspaper. Klinikum Altenburger Land GmbH  
+49 3447 520  
[www.klinikum-altenburgerland.de](http://www.klinikum-altenburgerland.de)

Photo: Gemma Garner

## Telephone



Country code: +49 Area  
code: 03447

Photo: Jardson Almeida

## Electricity



220V

Photo: Stirling Tschan

## Population

30,670 (2021)

## Currency

1€ = 100 cents

## Opening hours

Normal opening hours are 8h30-18h weekdays and  
8h30-13h on Saturdays.

## Internet

[www.stadt-altenburg.de](http://www.stadt-altenburg.de)

## Newspapers

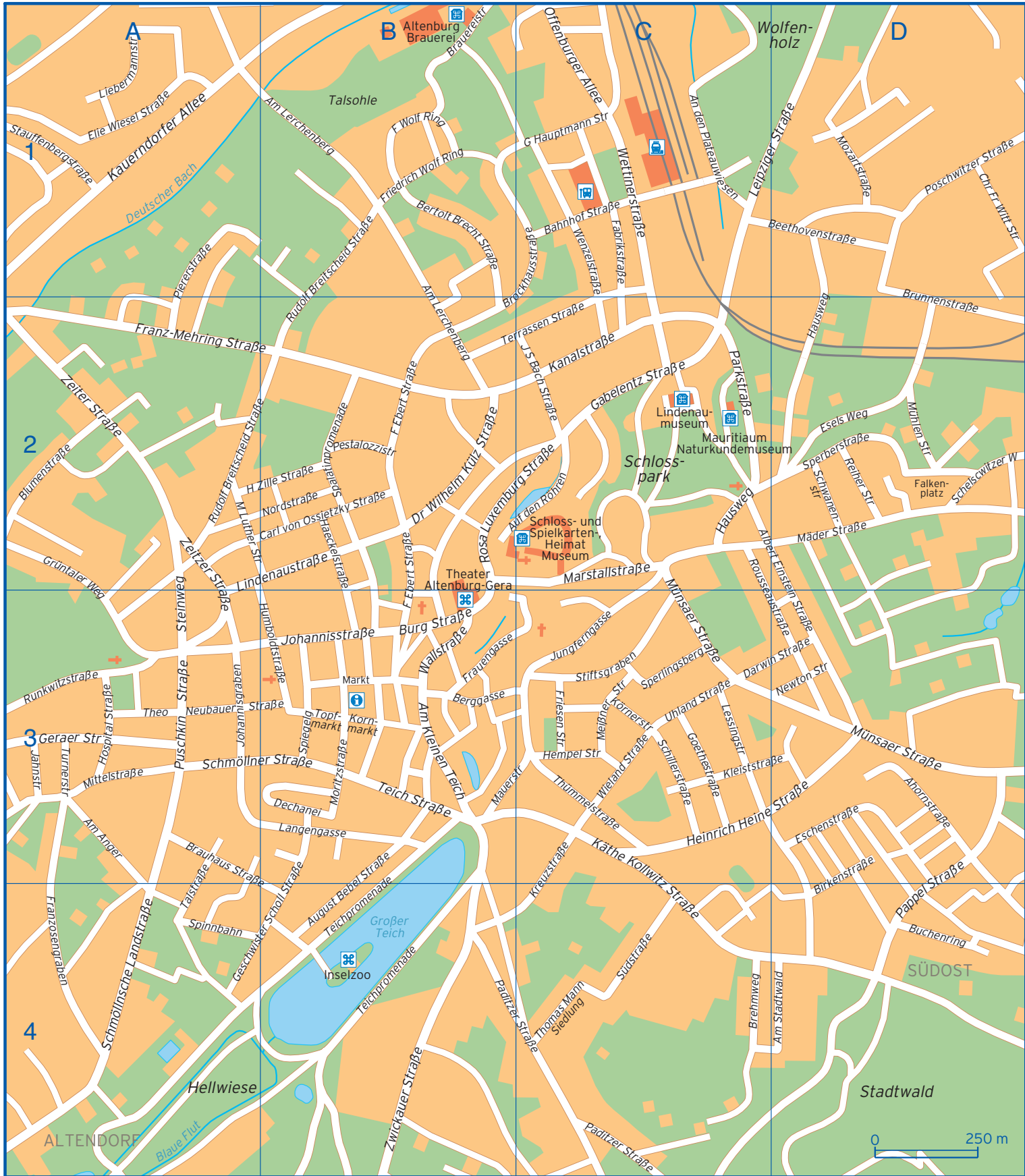
Die Zeit  
Leipziger Volkszeitung

## Emergency numbers

112

## Tourist information

Altenburger Tourismus Information  
Markt 17, Altenburg  
Mon-Fri 9h-18h, Sat-Sun 10h-16h  
+49 3447 512 800



|                                 |       |                              |          |                           |          |
|---------------------------------|-------|------------------------------|----------|---------------------------|----------|
| Ahornstraße                     | D3    | Goethestraße                 | C3       | Pappel Straße             | D3 D4    |
| Albert Einstein Straße          | C2 D3 | Grüntaler Weg                | A2 A3    | Parkstraße                | C2       |
| Am Anger                        | A3    | Haeckelstraße                | B2       | Pestalozzistraße          | B2       |
| Am Kleinen Teich                | B3    | Hausweg                      | C2 D1 D2 | Piererstraße              | A1 A2    |
| Am Lerchenberg                  | B1 B2 | Heinrich Heine Straße        | C3 D3    | Poschwitzer Straße        | D1       |
| Am Stadtwald                    | D4    | Heinrich Zille Straße        | A2 B2    | Puschkin Straße           | A3       |
| An den Plateauwiesen            | C1    | Hempel Straße                | C3       | Reiher Straße             | D2       |
| Auf den Röhren                  | B2 C2 | Hospital Straße              | A3       | Rosa Luxemburg Straße     | B2 C2    |
| August Bebel Straße             | B3 B4 | Humboldtstraße               | A3 B3    | Rousseaustraße            | C2 D3    |
| Bahnhof Straße                  | C1    | Jahnstraße                   | A3       | Rudolf Breitscheid Straße | A2 B1 B2 |
| Beethovenstraße                 | C1 D1 | Johann Sebastian Bach Straße | C2       | Runkwitzstraße            | A3       |
| Berggasse                       | B3    | Johannisgraben               | A3       | Schelschwitzer Weg        | D2       |
| Bertolt Brecht Straße           | B1    | Johannisstraße               | B3       | Schillerstraße            | C3       |
| Birkenstraße                    | D3 D4 | Jungferngasse                | C3       | Schmöllner Straße         | A3 B3    |
| Blumenstraße                    | A2    | Kanalstraße                  | C2       | Schmöllnsche Landstraße   | A4       |
| Brauereistraße                  | B1    | Kauerndorfer Allee           | A1       | Schwanenstraße            | D2       |
| Brauhaus Straße                 | A3 B4 | Kleiststraße                 | C3 D3    | Spalatinpromenade         | B2       |
| Brehmweg                        | C4    | Kornmarkt                    | B3       | Sperberstraße             | D2       |
| Brockhausstraße                 | B2 C1 | Kreuzstraße                  | C3 C4    | Sperlingsberg             | C3       |
| Brunnenstraße                   | D1 D2 | Käthe Kollwitz Straße        | C3 C4    | Spiegelgasse              | B3       |
| Buchenring                      | D4    | Körnerstraße                 | C3       | Spinnbahn                 | A4       |
| Burg Straße                     | B3    | Langengasse                  | B3       | Stauffenbergstraße        | A1       |
| Carl von Ossietzky Straße       | B2    | Leipziger Straße             | C1 D1    | Steinweg                  | A2 A3    |
| Christian Friedrich Witt Straße | D1    | Lessingstraße                | C3       | Stiftsgraben              | C3       |
| Darwin Straße                   | C3 D3 | Liebermannstraße             | A1       | Südstraße                 | C4       |
| Dechanei                        | B3    | Lindenaustraße               | A2 B2    | Talstraße                 | A3 A4    |
| Dr Wilhelm Külz Straße          | B2    | Markt                        | B3       | Teich Straße              | B3       |
| Elie Wiesel Straße              | A1    | Marstallstraße               | C2       | Teichpromenade            | B3 B4    |
| Eschenstraße                    | D3    | Martin Luther Straße         | A2       | Terrassen Straße          | B2 C2    |
| Esels Weg                       | D2    | Mauerstraße                  | B3 C3    | Theo Neubauer Straße      | A3 B3    |
| Fabrikstraße                    | C1    | Meißner Straße               | C3       | Thomas Mann Siedlung      | C4       |
| Falkenplatz                     | D2    | Mittelstraße                 | A3       | Thümmelstraße             | C3       |
| Franz-Mehring Straße            | A2 B2 | Moritzstraße                 | B3       | Topfmarkt                 | B3       |
| Franzosengraben                 | A4    | Mozartstraße                 | D1       | Turnerstraße              | A3       |
| Frauengasse                     | B3    | Mäder Straße                 | D2       | Uhland Straße             | C3       |
| Friedrich Ebert Straße          | B2 B3 | Mühlen Straße                | D2       | Wallstraße                | B3       |
| Friedrich Wolf Ring             | B1    | Münsaer Straße               | C2 C3 D3 | Wenzelstraße              | C1       |
| Friesen Straße                  | C3    | Newton Straße                | D3       | Wettinerstraße            | C1       |
| Gabelentz Straße                | C2    | Nordstraße                   | B2       | Wieland Straße            | C3       |
| Geraer Straße                   | A3    | Offenburger Allee            | C1       | Zeitzer Straße            | A2 A3    |
| Gerhart Hauptmann Straße        | C1    | Paditzer Straße              | B4 C4    | Zwickauer Straße          | B4       |
| Geschwister Scholl Straße       | A4 B3 |                              |          |                           |          |