



# Tampa Bay, Florida

Photo: Sean Pavone/Shutterstock.com



kesterhu/Shutterstock.com



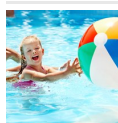
littleny/Shutterstock.com



aceshot1/Shutterstock.com

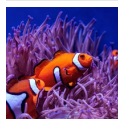
Whether lounging on the beach, watching volleyball and basking in the sun with your favorite drink, or filling your travel schedule to the max with museums, architecture, concerts, dining and shopping, the Tampa Bay Area is sure to please. Fresh seafood, nationally recognized steak houses and trendy martini bars keep visitors and locals busy in the evenings.

## Featured



### Adventure Island

Adventure Island is a water park that borders Busch Gardens in Tampa. With o...



### Florida Aquarium

The Florida Aquarium is a large scale 250,000 square-foot facility. Visitors...



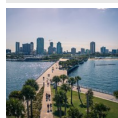
### Florida Holocaust Museum

The Florida Holocaust Museum, in its own words, strives to "honor the memory..."



### Museum of Science & Industry

The Museum of Science & Industry has something for visitors of all ages. Fro...



### St. Pete Pier

Originally opened in the land boom of the 1920s as the Million Dollar Pier, ...

## Top 5



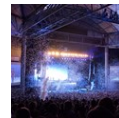
### Sparkman Wharf

Formerly known as Channelside Bay Plaza, this new park in east Downtown Tamp...



### Ybor City

Founded in the 1880s by cigar manufacturers and immigrants from Spain, Cuba ...



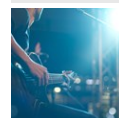
### MidFlorida Credit Union Am...

Originally known as the Ford Amphitheatre, the MidFlorida Credit Union Amphi...



### Straz Center for the Perfo...

The Straz Center for the Performing Arts opened its doors more than 35 years...



### Ruth Eckerd Hall

Nominated as one of the top five concert halls in the United States by a nat...

## THE CITY



Mike Focus/Shutterstock.com

From world-class dining and shopping, historical architecture, a lively nightlife and picturesque beaches, the Tampa Bay Area offers a myriad of activities for travelers of all kinds.

Many vacationers flock to this region for its beaches. Clearwater Beach, one of the most popular ones, is a fun, bustling and bar-filled area. On the other end of the spectrum, you have Honeymoon Island — a nature lover's serene beach paradise. From scenic walks and shell collecting to bikini contests and beach volleyball — there is a beach suited to any preference and a restaurant or bar to match.

On both the Tampa side and the St. Petersburg/Clearwater side of the bay, there is a wide variety of dining and evening activities. Many bars feature live bands and the casual ambiance. If you are after a more sophisticated, reservations-only experience, there are seafood restaurants and steak houses to satisfy you.

## DO & SEE



gary718/Shutterstock.com

In Tampa Bay, you can be just as busy as you choose to be. With concerts, art events and plays aplenty, it is hard to decide what will keep you entertained.

### Sparkman Wharf



Formerly known as Channelside Bay Plaza, this new park in east Downtown Tampa features a biergarten, eateries and an events

lawn. If you want to make a day of this area, the Florida Aquarium, the American Victory Museum, and the Spiltsville bowling alley are close by. Cargo and cruise ship watching at the Tampa Port Authority can be a great pastime too.

Photo: g-stockstudio/Shutterstock.com

Address: 615 Channelside Drive, Tampa

Phone: +1 813 345 5881

Internet: [sparkmanwharf.com](http://sparkmanwharf.com)

Email: [contactus@sparkmanwharf.com](mailto:contactus@sparkmanwharf.com)

### Ybor City



Founded in the 1880s by cigar manufacturers and immigrants from Spain, Cuba and Italy, Ybor City is a historic neighborhood originally known for



producing cigars. Today, Ybor is an infamous nightclub and entertainment district, attracting nearby college students, visitors and Tampa locals alike. Expect the unexpected in Ybor. The main street, 7th Avenue, houses all the bars and restaurants.

Photo: Peter K Burian/cc by-sa 4.0/wikimedia(image cropped)  
Address: East 7th Avenue, Tampa  
Internet: yborcityonline.com

### MidFlorida Credit Union Amphitheatre



Originally known as the Ford Amphitheatre, the MidFlorida Credit Union Amphitheatre is the first outdoor concert facility and the largest

concert-only venue in the Tampa Bay Area accommodates around 20,000 people. Very popular groups have played here, including the Dave Matthews Band, Rush and Gwen Stefani.

Photo: Steven Miller/cc by 2.0/Flickr(image cropped)  
Address: 4802 US-301, Tampa  
Opening hours: Box Office Hours: Mon-Fri 10am-5pm  
Phone: +1 813 740 2446  
Internet: [www.midflorida.com/about-us/amphitheatre](http://www.midflorida.com/about-us/amphitheatre)

### Straz Center for the Performing Arts



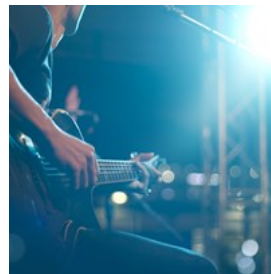
The Straz Center for the Performing Arts opened its doors more than 35 years ago and it is the most distinguished performing arts space

south of the Kennedy Center. It hosts the nation's leading Broadway series and it is known for producing operas along with concerts, performances and events.

Photo: Goran Djukanovic/Shutterstock.com  
Address: 1010 North Macinnes Place, Tampa

Phone: +1 813 229 7827  
Internet: [www.strazcenter.org](http://www.strazcenter.org)  
Email: <https://www.facebook.com/StrazCenter#>

### Ruth Eckerd Hall



Nominated as one of the top five concert halls in the United States by a nationwide industry poll of artists and their management, Ruth

Eckerd Hall is a long-standing tradition in the Pinellas County. Highlights include performances by the Florida Orchestra and The Chocolate Nutcracker during the holidays.

Photo: PopTika/Shutterstock.com  
Address: 1111 McMullen Booth Road, Clearwater  
Phone: +1 727 791 7400  
Internet: [www.rutheckerdhall.com](http://www.rutheckerdhall.com)  
Email: [info@rutheckerdhall.net](mailto:info@rutheckerdhall.net)

### American Stage Theatre Company



Starting as a small community theater in the late 1970s, American Stage has evolved and for over a decade has been voted "Best of the Bay"

by local residents. If in the area during March — April, a treat is one of the performances in a nearby park, often a play by Shakespeare. Bring your blankets and wine to enjoy theater outside among the trees.

Photo: Kyle Head/unsplash  
Address: 163 3rd Street North, St. Petersburg  
Phone: +1 727 823 7529  
Internet: [www.americanstage.org](http://www.americanstage.org)  
Email: [boxoffice@americanstage.org](mailto:boxoffice@americanstage.org)

### Seminole Hard Rock Hotel & Casino



For an entertainment experience that will go into the wee hours, check out the Seminole Hard Rock Hotel & Casino.

This is the only place in the Tampa Bay area that offers table games such as blackjack and baccarat. For the non-gamblers, there is a spa, large pool with surrounding cabanas, various bars and Floyd's Nightclub.

Photo: World Poker Tour/cc by-nd 2.0/Flickr

Address: 1 Seminole Way, Hollywood, Florida

Phone: +1 866 502 7529

Internet: [www.seminolehardrockhollywood.com](http://www.seminolehardrockhollywood.com)

### ZooTampa at Lowry Park



Voted by Parents Magazine as the best zoo in the nation for families, the Lowry Park Zoo is home to over a thousand animals that live in lush natural habitats. There are eight habitat areas and plenty of interactive experiences for the little ones.

Photo: Daiga Ellaby/unsplash

Address: 1101 West Sligh Avenue, Tampa

Opening hours: Daily 9:30am-5pm

Phone: +1 813 935 8552

Internet: [zootampa.org](http://zootampa.org)

Email: [information@lowryparkzoo.org](mailto:information@lowryparkzoo.org)

### Busch Gardens



The largest theme park in the area, Busch Gardens' hallmarks are its roller coasters and nearly 3,000 live animals, incorporated into various exhibits and

shows. SheiKra will give you all the thrills you can handle with a 200-foot drop, 90 degrees straight down, or for the traditionalists there is Gwazi, a wooden roller coaster with speeds exceeding 100 miles per hour. Jungala is an attraction where guests can get face-to-face with orangutans or play tug-of-war with tigers.

Photo: Jeremy Thompson/cc by 2.0/Flickr(image cropped)

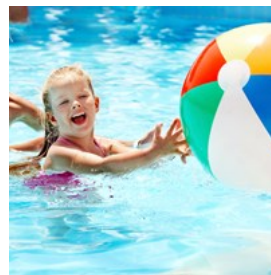
Address: 10165 McKinley Drive, Tampa

Opening hours: Daily from 10am. See official website for closing times

Phone: +1 813 884 4386

Internet: [buschgardens.com/tampa](http://buschgardens.com/tampa)

### Adventure Island



Adventure Island is a water park that borders Busch Gardens in Tampa. With over 30 acres of water-related activities including water slides, corkscrew slides, a rambling river, and a giant wave pool, Adventure Island has something for everyone, including cabanas to just lounge around in the sun.

Photo: Poznyakov/Shutterstock.com

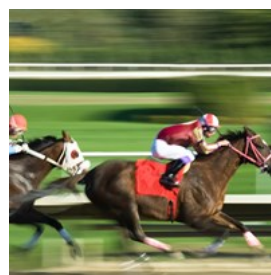
Address: 10001 McKinley Drive, Tampa

Opening hours: Open seasonally

Phone: +1 813 884 4386

Internet: [adventureisland.com](http://adventureisland.com)

### Tampa Bay Downs



Tampa Bay Downs is the only thoroughbred racetrack on the west coast of Florida with a rich history dating back to 1926. The track is known as one of the most popular turf tracks in the U.S. In addition to the racing, Tampa Bay Downs is also home to the Silks Poker Room, as

well as a full golf practice facility. While simulcast racing is offered year-round, the season for live racing spans December through early May.

Photo: Gergo Orban/Shutterstock.com  
Address: 11225 Race Track Road, Tampa  
Phone: +1 813 855 4401  
Internet: [www.tampabaydowns.com](http://www.tampabaydowns.com)  
Email: [info@tampabaydowns.com](mailto:info@tampabaydowns.com)

### Florida Aquarium



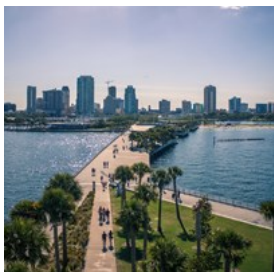
The Florida Aquarium is a large scale 250,000 square-foot facility.

Visitors not only get to see the many varieties of fish, but for certified

Scuba divers, there is also the opportunity to swim with sharks and other animals. The Florida Aquarium has many unique touches, such as the "Penguin Promenade," where penguins meet and greet all guests daily.

Photo: David Clode/unsplash  
Address: 701 Channelside Drive, Tampa  
Opening hours: Daily 9:30am-5pm  
Phone: +1 813 273 4000  
Internet: [www.flaquarium.org](http://www.flaquarium.org)  
Email: [moreinfo@flaquarium.org](mailto:moreinfo@flaquarium.org)

### St. Pete Pier



Originally opened in the land boom of the 1920s as the Million Dollar Pier, today's version offers more than just fishing. In addition to smaller gift

shops, the Pier has a two-story vertical aquarium, as well as a food court and four different waterfront restaurants.

Photo: AK/unsplash  
Address: 800 2nd Avenue NE, St. Petersburg

Phone: +1 727 821 6443  
Internet: [stpetepier.org](http://stpetepier.org)

### Salvador Dalí Museum

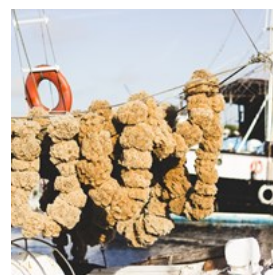


More than 200,000 visitors from all over the world frequent the Dalí Museum each year. The collection of one of the world's most eccentric

and unique artists opened in Cleveland in 1942, 40 years later it was moved to St. Petersburg. Dali's career spans several themes, from the Impressionist and Cubist styles of his early years to his transition to Surrealism, and it is represented here not only by almost 100 oil paintings, but photographs, sculptures, and watercolors as well.

Photo: Ebyabe/cc by 3.0/wikimedia(image cropped)  
Address: 1 Dali Boulevard, St. Petersburg  
Opening hours: Daily 10am-6pm, Thu until 8pm  
Phone: +1 727 823 3767  
Internet: [thedali.org](http://thedali.org)  
Email: [info@thedali.org](mailto:info@thedali.org)

### Tarpon Springs Sponge Docks



The Sponge Docks are a nod to the once-thriving sponge industry that helped make Tarpon Springs famous. Today, this area is home to many

family-owned Greek restaurants, bakeries and markets, but also offers visitors live entertainment, sightseeing cruises, shops, an aquarium, as well as lots of local Greek touches, such as hand-rolled cigars.

Photo: Nick Ledford/cc by 2.0/Flickr  
Address: 735 Dodecanese Boulevard, Tarpon Springs  
Internet: [spongedocks.net](http://spongedocks.net)  
Email: [info@spongedocks.net](mailto:info@spongedocks.net)



### Museum of Fine Arts



The Museum of Fine Arts, located in St. Petersburg, has the only comprehensive art collection on the west coast of Florida. The

museum has both an extensive permanent collection, as well as exhibitions from notables such as Dale Chihuly and Andy Warhol. After taking in a collection, browse the shops of Beach Drive or enjoy the waterfront at the nearby Straub Park.

Photo: CityofStPete/cc by-nd 2.0/Flickr

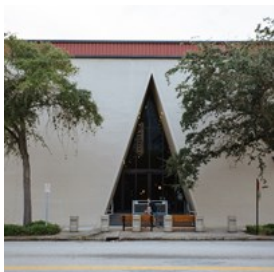
Address: 255 Beach Drive NE, St. Petersburg

Opening hours: Museum: Tue, Wed, Fri & Sat 10am-5pm; Thu 10am-8pm; Sun noon-5pm, Mon closed. Cafe: Thu-Sun 9am-3pm

Phone: +1 727 896 2667

Internet: mfastpete.org

### Florida Holocaust Museum



The Florida Holocaust Museum, in its own words, strives to “honor the memory of millions of innocent men, women, and children who suffered

or died in the Holocaust.” The museum has a permanent collection and also holds regular events with various guest speakers.

Photo: CityofStPete/cc by-nd 2.0/Flickr

Address: 55 5th Street South, St. Petersburg

Opening hours: Tue-Sun 10am-5pm, Mon closed

Phone: +1 727 820 0100

Internet: [www.thefhm.org](http://www.thefhm.org)

Email: [info@thefhm.org](mailto:info@thefhm.org)

### Museum of Science & Industry



The Museum of Science & Industry has something for visitors of all ages. From its IMAX Dome Theater to its Planetarium to the 3D

Science Works Theater. The Science Works Theater offers guests an up-close look at the sun in 3D. Come with time to spare because you will probably want to spend the entire afternoon here.

Photo: David Fulmer/cc by 2.p/Flickr

Address: 4801 East Fowler Avenue, Tampa

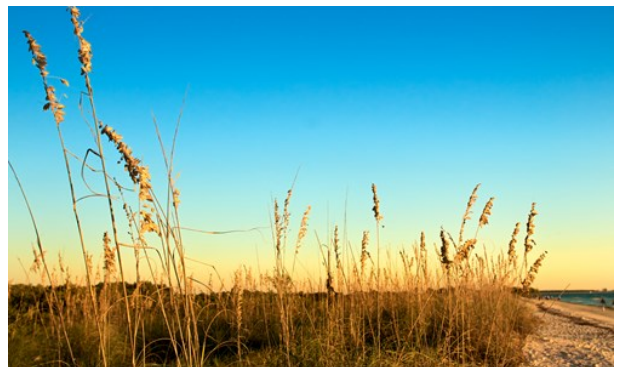
Opening hours: Daily 10am-5pm

Phone: +1 813 987 6000

Internet: [mosi.org](http://mosi.org)

Email: [social@mosi.org](mailto:social@mosi.org)

### BEACHES & PARKS



*Daniel Korzeniewski/Shutterstock.com*

Tampa is an excellent destination for outdoor enthusiasts. The great year-round weather creates the perfect setting for exploring the great outdoors. At Tampa Bay, you can find some of the world’s highest-rated pristine beaches with clear waters and beautiful sunsets.

The Tampa Bay area also boasts a large number of Florida State Parks and Historic Sites. Hillsborough River State Park’s main feature is the noble river tumbling over Suwannee

limestone, while Myakka River State Park is an excellent area for hikers to explore pine flatwoods, marsh land and swamp and a dry prairie.

### Fort De Soto Park



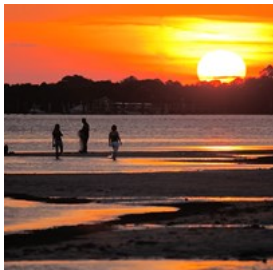
This beach, once inhabited by Tocobanga Indians and Spanish settlers, has been voted by TripAdvisor as “America’s Top Beach.”

Fort De Soto has the ideal blend of wide stretches of soft sand, clear water and a casual vibe. North Beach is a local favorite. Though it is packed on the weekends during high season, the crowds leave during the week.

Rent canoes or kayaks here and don’t forget to tour the fort which has the only four 12-inch seacoast rifled mortars in the United States. Also check out the two 6-inch Armstrong rapid-fire rifled guns.

Photo: Beyond My Ken/cc by-sa 4.0/wikimedia(image cropped)  
Address: 3500 Pinellas Bayway South, Tierra Verde  
Phone: +1 727 582 2267  
Internet: [pinellas.gov/parks/fort-de-soto-park](http://pinellas.gov/parks/fort-de-soto-park)

### Honeymoon Island State Park



Once called Hog Island by settlers, it became Honeymoon Island in 1939 when a developer built 50 palm thatched bungalows for

honeymooners. Today, it is considered one of the most well-preserved beaches in Florida. Shorebirds, osprey nests, mangrove swamps and slash pine tree forests are some of the sites to behold.

Photo: L'eau Bleue/cc by-sa 2.0/Flickr(image cropped)  
Address: 1 Causeway Boulevard, Dunedin  
Opening hours: Daily 8am-sundown  
Phone: +1 727 469 5942  
Internet: [www.floridastateparks.org/honeymoonisland](http://www.floridastateparks.org/honeymoonisland)

### Caladesi Island State Park



Accessible only by boat or ferry, this is one of the few completely natural islands along the Gulf Coast. Beachgoers can swim, collect shells and

work on their tan. Observe wildlife while hiking the three-mile nature trail or kayaking through the mangroves.

Photo: rcgtrrz/cc by 2.0/Flickr(image cropped)  
Address: Offshore Island, Dunedin  
Opening hours: Daily 8am-sundown  
Phone: +1 727 469 5918  
Internet: [www.floridastateparks.org/parks-and-trails/caladesi-island-state-park](http://www.floridastateparks.org/parks-and-trails/caladesi-island-state-park)

## SPORTS



*Eugene Onischenko/Shutterstock.com*

Tampa Bay will always be associated with sports. Any time of year you’ll be able to enjoy a professional baseball, hockey, football or soccer game.

### Tampa Bay Buccaneers



The Bucs are the most popular team in the Tampa Bay area. They play their home games at the Raymond James Stadium in Tampa, an exciting venue whether the game on the field is competitive or not. Fans begin game days (usually Sunday afternoon) with tailgating in various areas around the stadium, before making their way into the stadium, which seats 65,000 and boasts a life-size pirate ship.

Photo: arctic\_whirlwind/cc by-nd 2.0/Flickr.com(image cropped)  
Address: Raymond James Stadium, 4201 North Dale Mabry Highway, Tampa  
Opening hours: Stadium Office Hours: Mon-Fri & event days 8am-5pm  
Phone: +1 813 350 6500  
Internet: raymondjamesstadium.com

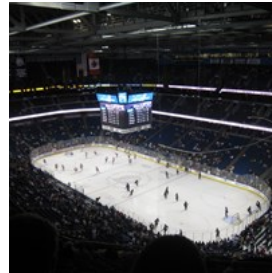
### Tampa Bay Rays



The Rays play their home games at Tropicana Field in St. Petersburg, a domed stadium that provides relief from the summer heat, and features a large tank with live sting rays.

Photo: Eric Kilby/cc by-sa 2.0/Flickr(image cropped)  
Address: Tropicana Field, 1 Tropicana Drive, St. Petersburg  
Phone: +1 727 825 3137  
Internet: www.mlb.com/rays/ballpark  
More Info: The stadium is commonly known as the Trop

### Tampa Bay Lightning



The Lightning was one of the first professional hockey franchises to call a state in the southern U.S. home, and quickly built a passionate fan base. The team plays its home games at the Amalie Arena, located in the Channel District in Tampa. After an exciting game on the ice, crowds of fans spill into the neighboring restaurants and bars to continue the evening.

Photo: Katy Warner/cc by-sa 2.0/Flickr(image cropped)  
Address: Amalie Arena, 401 Channelside Drive, Tampa  
Phone: +1 813 301 6500  
Internet: www.amaliearena.com

### Grand Prix of St. Petersburg



The Grand Prix of St. Petersburg is an annual race in the Indy Car Series, an international open-wheel racing circuit. The course winds through downtown St. Petersburg, and abuts the gorgeous waterfront. Many fans take the opportunity to make the race a long weekend, with the chance to mingle with the drivers and get an up-close look at the cars that will approach 200 miles per hour on race day.

Photo: Kuznetsov Alexey/Shutterstock.com  
Address: One Beach Drive SE, Suite 42, St. Petersburg  
Phone: +1 727 898 4639  
Internet: www.gpstpete.com  
Email: media@gpstpete.com



## DINING



svry/Shutterstock.com

With water all around, fresh seafood is never a bad option in most Tampa Bay restaurants. There are also world-class steakhouses and Latin-influenced cuisine to suit palettes of all kinds.

### La Terrazza



For an authentic Northern Italian dining experience, visit La Terrazza. From the flavorful menu to the intimate ambiance and the friendly staff, everything will make you feel like you're in a classic Italian bistro. A true hidden gem in the heart of Ybor City. Reservations are recommended.

Photo: goodluz/Shutterstock.com

Address: 1729 East 7th Avenue, Tampa

Opening hours: Lunch: Tue-Fri from 11:30am. Dinner: Tue-Sat from 5:30pm

Phone: +1 813 248 1326

Internet: [www.laterrazzayborcity.com](http://www.laterrazzayborcity.com)

Email: [laterrazzarist@aol.com](mailto:laterrazzarist@aol.com)

### Bern's Steak House



Originally opened in 1956, Bern's is an internationally renowned steakhouse, and possibly the Tampa Bay area's best-known restaurant.

Bern's specializes in prime dry-aged steaks cut to order, but also boasts a wine list that numbers over 6,800 labels. Reservations are recommended at Bern's, sometimes well in advance.

Photo: stockcreations/Shutterstock.com

Address: 1208 South Howard Avenue, Tampa

Opening hours: Sun-Thu 5pm-10pm, Fri & Sat 5pm-11pm, Mon closed

Phone: +1 813 251 2421

Internet: [bernssteakhouse.com](http://bernssteakhouse.com)

Email: [bshcontact@bernssteakhouse.com](mailto:bshcontact@bernssteakhouse.com)

### Bob Heilman's Beachcomber



In Clearwater Beach, the Beachcomber has been a staple since 1948.

Offering both steaks and seafood, the

Beachcomber is also

known for its fine service and unique touches, such as the relish tray with fresh baked banana bread. The Seafood Mélange is a hit, with its combination of Gulf shrimp, scallops, fresh fish and Maryland deviled crab cake. Reservations are recommended.

Photo: Kzenon/Shutterstock.com

Address: 447 Mandalay Avenue, Clearwater Beach

Opening hours: Daily 5pm-10pm

Phone: +1 727 442 4144

Internet: [www.bobheilmansbeachcomber.com](http://www.bobheilmansbeachcomber.com)

Email: [info@bobheilmans.com](mailto:info@bobheilmans.com)

### Jackson's Bistro, Bar & Sushi



Jackson's Bistro is located in the Harbour Island section of downtown Tampa. With a great waterfront location, Jackson's is open every day for lunch and dinner, and also features a delicious, and affordable Sunday brunch. In the later hours, Jackson's night club comes alive, with two large rooms inside and outdoor cabanas outside on the waterfront terrace. Jackson's also offers a full sushi menu to go along with its more traditional fare.

Photo: Kzenon/Shutterstock.com

Address: 601 South Harbour Island Boulevard, Tampa

Opening hours: Mon-Thu 11am-10pm, Fri-Sat 11am-11pm, Sun 10:30am-10pm

Phone: +1 813 277 0112

Internet: [www.jacksonsbistro.com](http://www.jacksonsbistro.com)

Email: [info@jacksonsbistro.com](mailto:info@jacksonsbistro.com)

### Oystercatchers



Part of the Hyatt Hotel, Oystercatchers blends a gorgeous waterfront location with exquisite local cuisine. The restaurant specializes in seafood, featuring fresh wild and line-caught fish. Sunday brunch is quite a treat, as the buffet features everything from fresh sushi and stone crab to a full dessert bar. Reservations are recommended.

Photo: New Africa/Shutterstock.com

Address: 2900 Bayport Drive, Tampa

Phone: +1 813 207 6815

Internet: [oystercatchersrestaurant.com](http://oystercatchersrestaurant.com)

### Mise en Place



Located downtown directly across from the University of Tampa, Mise en Place specializes in Modern American cuisine. The menu is ever-changing, as the head chef enjoys keeping things fresh. Among the favorites is the tasting menu, which is a five-course dinner featuring a sample of Blitz' favorite dishes of the week. Reservations are recommended.

Photo: Monkey Business Images/Shutterstock.com

Address: 442 West Kennedy Boulevard, Suite 110, Tampa

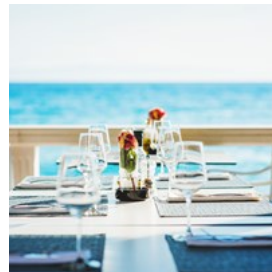
Opening hours: Dinner: Tue-Thu 5pm-9pm, Fri & Sat 5pm-10pm

Phone: +1 813 254 5373

Internet: [www.miseonline.com](http://www.miseonline.com)

Email: [info@miseonline.com](mailto:info@miseonline.com)

### Hurricane



Notorious as much for its stunning sunsets as its fresh grouper sandwich, The Hurricane is a must for any visitor to the Tampa Bay area. Located

in the Pass-a-Grille section of St. Pete Beach, The Hurricane offers both indoor and outdoor seating, as well as a rooftop bar to capture picturesque views of both the Gulf of Mexico to the west and the intercoastal waterway to the east. Just across the street from the beach, feel free to come in your beach attire.

Photo: Olena Bloshchynska/Shutterstock.com

Address: 809 Gulf Way, St. Pete Beach

Opening hours: Sun-Thu 11:30am-9:30pm, Fri & Sat 11:30am-10:30pm

Phone: +1 727 360 9558

### Frenchy's Rockaway Grill



Any traveler who makes it to the Clearwater Beach area must stop at one of the four Frenchy's locations. The Rockaway Grill, directly on

Clearwater Beach, is Frenchy's largest location, and it has basic fare for the entire family, highlighted by the "World Famous Grouper Sandwich." Don't worry about dressing up — in fact, you may want to bring your shorts for a game of beach volleyball on the outdoor court just steps from the restaurant.

Photo: Inspired By Maps/Shutterstock.com

Address: 7 Rockaway Street, Clearwater

Opening hours: Sun-Thu 11am-midnight, Fri-Sat 11am-1am

Phone: +1 727 446 4844

Internet: frenchysonline.com

### Ted Peters Famous Smoked Fish



Ted Peters is a local favorite between mainland St. Petersburg and the Gulf beaches. Famous for its unique smoked fish spread, many

diners swing by just to pick some up to augment their own meals or have on hand for snacks. Don't expect white tablecloths here, as you will probably be sitting on a bench outside. One of the best local secrets in the St. Petersburg area.

Photo: KaKrue/Shutterstock.com

Address: 1350 Pasadena Avenue South, St. Petersburg

Opening hours: Wed-Mon 11:30am-7:30pm, Tue closed

Phone: +1 727 381 7931

More Info: Not pet-friendly. Cash only.

### Salt Rock Grill



One of the finest seafood restaurants in the entire area, Salt Rock Grill offers everything from raw oysters to lobster tail to Alaskan king crab, as

well as other favorites such as steak and veal.

Located on the Intercoastal Waterway in Indian Shores, diners can take in the spectacular views while enjoying an entrée that was probably swimming in the Gulf of Mexico just the day before. Reservations are recommended.

Photo: timurtas onan/Shutterstock.com

Address: 19325 Gulf Boulevard, Indian Shores

Opening hours: Mon-Fri 4pm-10pm, Sat & Sun noon-10pm

Phone: +1 727 593 7625

Internet: [www.saltrockgrill.com](http://www.saltrockgrill.com)

Email: [baystarrestaurantgroup@gmail.com](mailto:baystarrestaurantgroup@gmail.com)

### Columbia



The Columbia traces its roots back to 1905, when the original location was opened in Tampa's Ybor City, earning it the designation of Florida's

oldest Spanish-themed restaurant. The 1905 salad should kick off every diner's experience, and can be followed by black bean crab cakes, scallops "casimiro", or empanadas de picadillo, which are spiced ground beef-filled pastry turnovers with roasted corn and black bean salsa. Columbia has other locations in the area, including some cafes.

Photo: DGLimages/Shutterstock.com

Address: 411 Saint Armands Circle, Sarasota

Opening hours: Sun-Thu 11am-9pm, Fri-Sat 11am-10pm

Phone: +1 941 388 3987

Internet:

[www.columbiarestaurant.com/st-armands-circle-sarasota](http://www.columbiarestaurant.com/st-armands-circle-sarasota)

Email: [comments@columbiarestaurant.com](mailto:comments@columbiarestaurant.com)



## BARS & NIGHTLIFE



Sean Pavone/Shutterstock.com

Tampa has long been a destination to imbibe and socialize. In whatever part of Tampa Bay you find yourself, there is a bar to suit your needs.

### Rock Brothers Brewing



Rock 'n'roll themed bar offering great microbrewery beers on tap, cocktails and an upstairs concert venue. A nice place to grab a beer with your friends while listening to live music in the Historic Ybor district. Check out their social media for a full list of upcoming events.

Photo: Evannovostro/Shutterstock.com

Address: 1901 North 15th Street, Tampa

Opening hours: Wed & Thu 4pm-10pm, Fri 4pm-2am, Sat 1pm-2am, Sun 1pm-10pm, Mon & Tue closed

Internet: [rockbrothersbrewing.com](http://rockbrothersbrewing.com)

Email: [info@rockbrothersbrewing.com](mailto:info@rockbrothersbrewing.com)

### The Sail



Grab a drink and enjoy Tampa's nice weather at this waterfront outdoor bar offering drinks, small bites and great views of the Hillsborough River.

Photo: Thoom/Shutterstock.com

Address: 333 South Franklin Street, Tampa

Opening hours: Sun-Thu 11am-11pm, Fri & Sat 11am-1am

Phone: +1 813 274 8954

Internet: [www.tampa.gov/tcc/the-sail](http://www.tampa.gov/tcc/the-sail)

More Info: Dog-friendly

### MacDinton's Irish Pub



Enjoy live music and Irish hospitality in the large open outdoor area. The menu includes traditional Irish fare like Shepherd's Pie, Sausage Rolls and

Bangers & Mash.

Photo: Syda Productions/Shutterstock.com

Address: 405 South Howard Avenue, Tampa

Opening hours: Mon-Fri 4pm-3am, Sat & Sun 11am-3am

Phone: +1 813 251 8999

Internet: [macdintons.com](http://macdintons.com)

Email: [gmsoho@macdintons.com](mailto:gmsoho@macdintons.com)

### Shephard's Tiki Beach Bar



Inside the Shephard's Beach Resort, you'll find this waterfront tiki bar featuring good drinks and food, live music, and beautiful views of the

Bay. If quintessential beach bars are your thing, then you can't miss the trendy weekend hang out at Shephard's.

Photo: Syda Productions/Shutterstock.com

Address: 619 South Gulfview Boulevard, Clearwater Beach

Opening hours: Sun-Thu 10am-1am, Fri & Sat 10am-2:30am

Phone: +1 727 442 5107

Internet: [www.shephards.com/venues](http://www.shephards.com/venues)

Email: [info@shephards.com](mailto:info@shephards.com)

### Caddy's Treasure Island



Caddy's is the place to sip a cocktail, work on your tan and watch the beach volleyball players.

Highlights include daily live music, big screen TVs

and valet parking.

Photo: Deborah Kolb/Shutterstock.com

Address: 9000 Gulf Boulevard, Treasure Island

Opening hours: Daily 8am-11pm

Phone: +1 727 360 4993

Internet: [caddys.com/caddys-treasure-island](http://caddys.com/caddys-treasure-island)

Email: [gmtreasureisland@caddys.com](mailto:gmtreasureisland@caddys.com)

### The Dubliner Irish Pub



Low key Irish pub in the heart of South Tampa, featuring a wide selection of beers, live music, indoor seating as well as an outdoor patio.

Photo: fred goldstein/Shutterstock.com

Address: 2307 West Azeele Street, Tampa

Opening hours: Thu & Fri 5pm-3am, Sat noon-3am, Sun noon-11pm, Mon-Wed closed

Phone: +1 813 258 2257

Internet: [www.instagram.com/dublinersoho](http://www.instagram.com/dublinersoho)

### World of Beer



Gastropub featuring more than 500 beers from all over the world, plus burgers and tacos served in a friendly atmosphere.

Not sure which beer to

order? Let the knowledgeable staff help you.

They also offer outdoor seating and plenty of TVs.

Photo: Kzenon/Shutterstock.com

Address: 5311 Avion Park Drive, Tampa

Opening hours: Mon-Thu 11am-midnight, Fri & Sat

11am-1am, Sun 11am-midnight

Phone: +1 813 930 5499

Internet: [www.worldofbeer.com/Locations/SouthTampa](http://www.worldofbeer.com/Locations/SouthTampa)

More Info: World of Beer is a chain with several locations in Tampa area

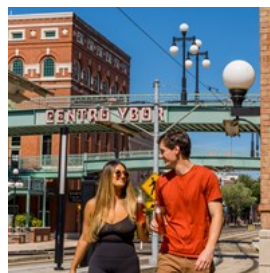
## SHOPPING



Tony Alt/Shutterstock.com

If shopping is your favorite pastime, you have come to the right place. The Tampa Bay area is known for its eclectic shops for any taste and budget. From large malls and high-end stores to smaller boutiques and outdoor markets.

### Centro Ybor



This once rundown set of buildings in the historic district of Ybor is now a popular two-level shopping, dining and entertainment destination

in Tampa. Here you'll find great local restaurants, specialty shops, bars, a 10-screen cinema, theater and much more.

Photo: Sidral Mundet/unsplash

Address: 1600 East 8th Avenue, Tampa

Opening hours: Mon-Wed 10am-8pm, Thu-Sat 10am-10pm, Sun 11am-7pm

Phone: +1 813 242 4660

Internet: [www.centroybor.com](http://www.centroybor.com)

### Sundial St. Pete



Upscale open-air complex in the heart of St. Petersburg, featuring an array of eateries, shops, markets, an IMAX cinema, all in a modern

and sophisticated setting. A true oasis in the heart of the city's bustling downtown center.

Photo: VGstockstudio/Shutterstock.com

Address: 153 2nd Avenue North, St. Petersburg

Opening hours: Mon-Sat 10am-9pm, Sun noon-8pm

Phone: +1 727 800 3201

Internet: sundialstpete.com

Email: info@sundialstpete.com

### International Plaza & Bay Street



When only the best will do, shoppers head to International Plaza. The newest of the super malls in the area, the International Plaza offers

the best of the best. Nordstrom's shoe department and its service are legendary. Other highlights include stores such as Betsey Johnson, BCBG, J Crew, Burberry, Tiffany and Co., Neiman Marcus and Louis Vuitton. This is truly a designer's paradise. After a long day of shopping, head over to Bay Street where you can grab a bite at the Cheesecake Factory or a martini at Bar Louie.

Photo: Aaron Amat/Shutterstock.com

Address: 2223 North Westshore Boulevard, Tampa

Opening hours: Mon-Sat 10am-9pm, Sun 11am-6pm

Phone: +1 813 342 3790

Internet: shopinternationalplaza.com

Email: internationalplaza@taubman.com

### WestShore Plaza



Located just a few minutes from the International Plaza, this is a favorite mall for locals. Smaller than the other ones, but still offering a

variety of stores including Macy's, Old Navy, JCPenney just to name a few, as well as some eateries and an AMC movie theater.

Photo: Africa Studio/Shutterstock.com

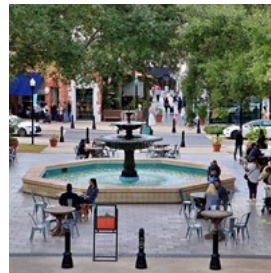
Address: 250 WestShore Plaza, Tampa

Opening hours: Mon-Thu 11am-8pm, Fri & Sat 10am-9pm, Sun 11am-6pm

Phone: +1 813 286 0790

Internet: westshoreplaza.com

### Hyde Park Village



Nestled in the South Tampa neighborhood of Hyde Park, this upscale open-air collection of specialty shops, restaurants and a movie

theater is a great place to spend a few hours on Saturday or Sunday.

Photo: Guerinf/cc by-sa 4.0/wikimedia(image cropped)

Address: 1623 West Snow Circle, Tampa

Opening hours: Mon-Sat 10am-8pm, Sun noon-5pm

Phone: +1 813 251 3500

Internet: hydeparkvillage.com

Email: hydeparkvillage@wsdevelopment.com



## TOURIST INFORMATION



Photo: Marek Gahura/Shutterstock.com

### Passport/Visa



Citizens of the Schengen countries, the United Kingdom, Ireland, Canada, Australia, New Zealand, Singapore, Japan, South Korea,

Taiwan and the Kingdom of Brunei can visit the United States for up to 90 days without applying for a visa (as well as citizens of Andorra, Lichtenstein, Monaco and San Marino). Citizens of these countries must obtain an ESTA (Electronic System for Travel Authorization) before traveling. All other travelers must obtain a visa before visiting the United States. International travelers need a passport that is valid for at least 3 months after the end of their intended trip in order to enter the country.

Photo: TukTuk Design/Shutterstock.com

### Best Time To Visit



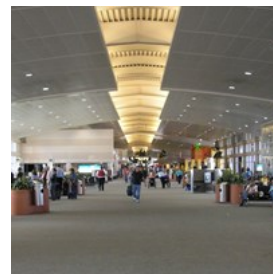
The best time to visit Tampa is in the fall and beginning of winter (September-December) when the weather is more pleasant, the city is less

crowded, and hotels offer their lowest rates. However, be aware that August to October is peak season for hurricanes.

Summers in Florida are known for being very hot and humid. Wintertime is usually sunny and mild with temperatures around 65°F (18°C). That is when lots of people come to Florida to escape the cold from the north, which means high hotel fares.

Photo: VectorA/Shutterstock.com

### Tampa International Airport (TIA)



Tampa International Airport (TIA) is the main airport serving the Tampa Bay area. There are four main terminals, serving a variety of airlines,

including domestic carriers Continental, Northwest, American, Jet Blue, Delta, Southwest, United, and US Airways, as well as international carriers Air Canada, British Airways, KLM, and Cayman Airways. The airport is located just 5 miles west of downtown Tampa on the east shore of Tampa Bay. In addition to various rental car options and taxis, there are also bus service as well as airport limousines that can transport passengers to any destination in the Bay Area. The beaches in the western part of the area are only about a 40-minute drive from the airport, the first half of which is spent traversing Tampa Bay over the Howard Franklin Bridge.

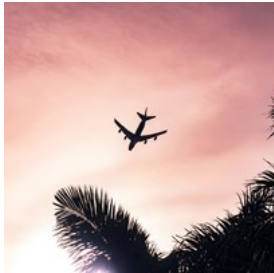
Photo: Dustin Coates/cc by-sa 2.0/wikimedia(image cropped)

Address: 4100 George J Bean Parkway, Tampa

Phone: +1 813 870 8700

Internet: [tampaairport.com](http://tampaairport.com)

### St. Pete–Clearwater International Airport (PIE)



St. Pete–Clearwater International Airport (PIE) is located 9 miles north of St. Petersburg (or 17 miles from Tampa).

This smaller airport serves over 50 destinations in the U.S. as well as select destinations in Canada.

Photo: Eduardo Velazco Guart/unsplash

Address: 14700 Terminal Boulevard #221, Clearwater

Phone: +1 727 453 7800

Internet: [fly2pie.com](http://fly2pie.com)

### Public Transport



Tampa's bus service is known as HART, and it services all areas of the Hillsborough County.

Visitors can buy a 3-day pass to really explore the

city, which gives them access to all local buses, as well as the TECO Line Streetcar and In-Town Trolley routes. Route 30 goes straight from the airport to downtown Tampa.

Photo: Pierre-Luc Auclair

Phone: +1 813 254 4278

Internet: [www.visittampabay.com/meeting-planners/services/transportation/public-transportation](http://www.visittampabay.com/meeting-planners/services/transportation/public-transportation)

### Taxi



Various taxicab options are available on both sides of the bay. Check the Visit Tampa bay website for the most up-to-date list of trusted

companies.

Other options for lower fares are the rideshare companies Uber and Lyft. Wingz app is great for

trips to and from the airport.

Photo: ArrivalGuides

Internet: [www.visittampabay.com/meeting-planners/services/transportation/taxis-car-rentals-charter-buses](http://www.visittampabay.com/meeting-planners/services/transportation/taxis-car-rentals-charter-buses)

### Pharmacy



Popular chain pharmacies such as CVS and Walgreens can be found in several locations throughout the Bay area. You can also get

pharmacy services at Walmart.

Photo: Gemma Garner

Address: CVS, 611 South Howard Avenue, Tampa

Opening hours: 24/7

Phone: +1 813 259 9911

Internet: [www.cvs.com](http://www.cvs.com)

### Post Office



Sending parcels and letters in the US is a relatively straightforward process. The most common method is through the United States

Postal Service (USPS). The USPS offers a variety of services for sending mail, including First-Class Mail for letters and postcards, Priority Mail for packages, and Priority Mail Express for overnight delivery. To send a parcel or letter, you will need to take it to a USPS post office or use a USPS blue collection box. Use the USPS website to find the nearest post office or collection box to your location. Additionally, you can also use private couriers such as FedEx and UPS, which often provide a wider range of services and faster delivery times, but generally at a higher cost.

Photo: Andy Fuchs

Address: United States Postal Service, 3501 Bessie Coleman Boulevard, Tampa

Opening hours: Mon–Fri 8am–10pm, Sat 8am–8pm, Sun 10am–8pm

Phone: +1 813 877 0374

Internet: [www.usps.com](http://www.usps.com)

## Time Zone



The Tampa Bay Area is in the Eastern Time Zone, and all times are reflected in the Eastern Time Zone.

Photo: Marek Polakovic

## Telephone



Country code: +1 Area codes in Tampa, St. Petersburg and Clearwater: 813 and 727

Photo: Jardson Almeida

## Electricity



US electrical power is 110V/60 cycles AC with two flat parallel prongs.

Photo: Stirling Tschan

## Population

Tampa: 387,050 (2021)

St. Petersburg: 258,201 (2021)

Clearwater: 117,292 (2020)

## Currency

\$1 US Dollar = 100 cents

## Opening hours

Most businesses open at 9 am or 10 am and stay open until

5pm or 6pm. Most restaurants open at 11 am or noon and stay open until 10 pm. While bars are open until 2 am.

## Internet

[www.visittampabay.com](http://www.visittampabay.com)

## Newspapers

Tampa Bay Times — [www.tampabay.com](http://www.tampabay.com)

La Gaceta — [lagacetanewspaper.com](http://lagacetanewspaper.com)

## Emergency numbers

911 (General emergency)

Tampa Police Department +1 813 276 3200

St. Petersburg Police Department +1 727 893 7780

Clearwater Police Department +1 727 562 4242

## Tourist information

Unlock Tampa Bay Visitors Center

201 North Franklin Street, Suite 102, Tampa, FL

+1 813 223 2752

Mon–Sat 10am–6pm, Sun 11am–5pm

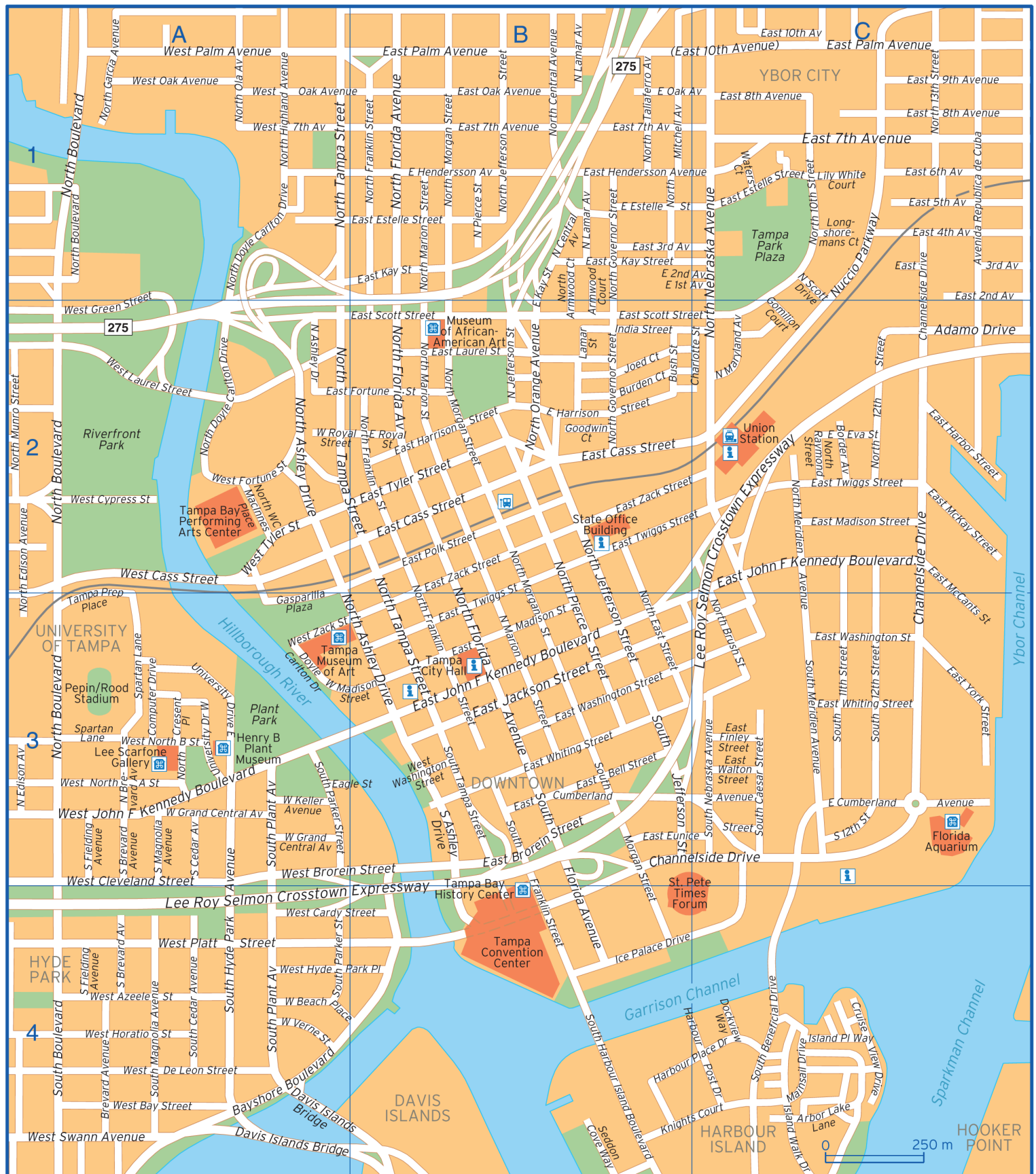
Visit St. Pete/Clearwater

8200 Bryan Dairy Road, Suite 200, Largo, FL

+1 727 464 7200

Mon–Fri 9am–5pm, Sat & Sun closed





Adamo Drive	C2	East Royal Street	B2	North Morgan Street	B1 B2 B3
Arbor Lake Lane	C4	East Scott Street	B2 C2	North Munro Street	A2
Armwood Court	B1 B2	East Twiggs Street	B2 B3 C2	North Nebraska Avenue	C1 C2
Avenida Republica de Cuba	C1	East Tyler Street	B2	North Ola Avenue	A1
Bayshore Boulevard	A4	East Walton Street	C3	North Orange Avenue	B2
Border Avenue	C2	East Washington Street	B3 C3	North Pierce Street	B1 B2 B3
Brevard Avenue	A4	East Whiting Street	B3 C3	North Raymond Street	C2
Burden Court	B2	East York Street	C3	North Scott Drive	C1 C2
Bush Street	B2	East Zack Street	B2 B3 C2	North Taliaferro Avenue	B1
Channelside Drive	B3 C1 C2	Gasparilla Plaza	A3	North Tampa Street	A1 A2 B2 B3
Charlotte Street	C2	Gomilion Court	C2	North WC MacInnes Place	A2
Computer Drive	A3	Goodwin Court	B2	Nuccio Parkway	C1
Cruise View Drive	C4	Harbour Place Drive	B4 C4	Seddon Cove Way	B4
Davis Islands Bridge	A4 B4	Harbour Post Drive	B4 C4	South 11th Street	C3
Dockview Way	C4	Ice Palace Drive	B4 C4	South 12th Street	C3
Doyle Carlton Drive	A3	India Street	B2	South Ashley Drive	B3
Eagle Street	A3 B3	Island Place Way	C4	South Beneficial Drive	C4
East 10th Avenue	C1	Island Walk Drive	C4	South Boulevard	A4
East 1st Avenue	B1 C1	Joed Court	B2	South Brevard Avenue	A3 A4
East 2nd Avenue	B1 C1 C2	Knights Court	B4 C4	South Caesar Street	C3
East 3rd Avenue	B1 C1	Lamar Street	B2	South Cedar Avenue	A3 A4
East 4th Avenue	C1	Lee Roy Selmon Crosstown Expressway	A4 B4 C2 C3	South Fielding Avenue	A3 A4
East 5th Avenue	C1	Lily White Court	C1	South Florida Avenue	B3 B4
East 6th	C1	Long shoremans Court	C1	South Franklin Street	B3 B4

Avenue					
East 7th Avenue	B1 C1	Mainsail Drive	C4	South Harbour Island Boulevard	B4
East 8th Avenue	C1	North 10th Street	C1	South Hyde Park Avenue	A3 A4
East 9th Avenue	C1	North 12th Street	C2	South Jefferson Street	B3
East Bell Street	B3	North 13th Street	C1	South Magnolia Avenue	A3 A4
East Brorein Street	B3	North Armwood Court	B1 B2	South Meridien Avenue	C3
East Cass Street	B2	North Ashley Drive	A2 A3 B3	South Morgan Street	B3 B4
East Cumberland Avenue	B3 C3	North Boulevard	A1 A2 A3	South Nebraska Avenue	C3
East Estelle Street	B1 C1	North Brevard Avenue	A3	South Parker Street	A3 A4
East Eunice Street	B3 C3	North Brush Street	C3	South Plant Avenue	A3 A4
East Eva Street	C2	North Central Avenue	B1	South Tampa Street	B3
East Finley Street	C3	North Cresent Place	A3	Spartan Lane	A3
East Fortune Street	A2 B2	North Doyle Carlton Drive	A1 A2	Tampa Prep Place	A3
East Harbor Street	C2	North East Street	B2 B3	University Drive East	A3
East Harrison Street	B2	North Edison Avenue	A2 A3	University Drive West	A3
East Hendersson Avenue	B1 C1	North Florida Avenue	B1 B2 B3	Waters Court	C1
East Jackson Street	B3	North Franklin Street	B1 B2 B3	West 7th Avenue	A1
East John F Kennedy Boulevard	B3 C2	North Garcia Avenue	A1	West Azeele Street	A4
East Kay Street	B1 B2	North Governor Street	B1 B2	West Bay Street	A4
East Laurel Street	B2	North Highland Avenue	A1	West Beach Place	A4
East Madison Street	B3 C2	North Jefferson Street	B1 B2 B3	West Brorein Street	A3 B3



East McCants Street	C2 C3	North Lamar Avenue	B1	West Cardy Street	A4 B4
East McKay Street	C2	North Marion Street	B1 B2 B3	West Cass Street	A2
East Oak Avenue	B1 C1	North Maryland Avenue	C2	West Cleveland Street	A4
East Palm Avenue	B1 C1	North Meridien Avenue	C2 C3	West Cypress Street	A2
East Polk Street	B2	North Mitchell Avenue	B1	West De Leon Street	A4

West Fortune Street	A2	West Laurel Street	A2	West Royal Street	A2 B2
West Grand Central Avenue	A3	West Madison Street	A3 B3	West Swann Avenue	A4
West Green Street	A1 A2	West North A Street	A3	West Tyler Street	A2
West Horatio Street	A4	West North B Street	A3	West Verne Street	A4
West Hyde Park Place	A4 B4	West Oak Avenue	A1 B1	West Washington Street	B3
West John F Kennedy Boulevard	A3	West Palm Avenue	A1	West Zack Street	A3
West Keller Avenue	A3	West Platt Street	A4		