



Photo: RobertColquhoun/Shutterstock.com



CraigBurrows/Shutterstock.com



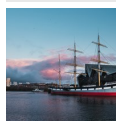
strelka/Shutterstock.com



cornfield/Shutterstock.com

Glasgow is the 21st-century magnet of Great Britain, with an energetic yet sophisticated vibe. Formerly Britain's major centre of industrial prowess, it has transformed into a booming hub for art and culture in the past decades. The city prides itself on a never-ending stream of up-and-coming musicians and a thriving nightlife. Glasgow is also home to many excellent modern Scottish restaurants dedicated to preserving their Scottish heritage. Some of the best shopping in the country can be found here, too.

### Featured



#### The Tall Ship Glenlee

A visit to SV Glenlee is a glimpse into Glasgow's nautical history. This for...



#### Road A82 to Inverness

Spanning 270 kilometres, this picturesque route traces its path from Glasgow...



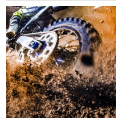
#### Buchanan Street

One of Glasgow's main arteries is a lively, pedestrian-friendly street with ...



#### Pollok Country Park

Whether it's cycling or a relaxing picnic you are after, the city's only, 14...



#### Glasgow Tigers Speedway

For motor sport fans, the Glasgow Tigers Speedway is a must with weekly comp...

### Top 5



#### Kelvingrove Art Gallery & ...

Kelvingrove Museum in Glasgow is an ideal destination for those with limited...



#### Glasgow Botanic Gardens

This floral haven in West End is the place to end all city walks and give re...



#### Glasgow Cathedral

With the first stones laid in 1136, Glasgow Cathedral is the oldest in mainl...



#### Auchentoshan Distillery

Established in 1823, Auchentoshan Distillery proudly proclaims its ties to a...



#### Cycling in Glasgow

A guided tour by bike is a great way to explore Glasgow's landmarks from a n...



## THE CITY



Tana888/Shutterstock.com

Glasgow is the largest Scottish city, fourth in the United Kingdom, the Scottish economic capital and, most of all, preserves some of the richest historic heritage in the country.

The city is crossed by the Clyde River, around which the Roman general Gneus Julius Agricola — who played the main role during the Roman conquest of Britain — led the construction of some fortresses in 80 AD. The remains of those can still be seen in modern Glasgow. As the legend goes, hundreds of years later, the Christian missionary Saint Mungo founded the city and built a small wooden church close to Molendinar Burn, which centuries later will turn into the splendid Glasgow Cathedral.

Formally a major industrial and commercial centre, modern Glasgow is a flourishing centre for arts and culture. Over the past couple of decades, it has been named City of Culture, Capital of Sport, UNESCO City of Music and City of Architecture and Design. The latter is, perhaps, partly due to the abundance of unique buildings designed by legendary Scottish architect Charles Rennie Mackintosh that dot the city.

The areas of most interest to visitors are, of course, the City Centre, and the West End, a hip

area with some of Glasgow's coolest cafes and bars, also home to the University of Glasgow and the well-known Kelvingrove Museum. West of the city centre, on the banks of the River Clyde, sit the Science Centre and the Riverside Museum, both a must for tourists.

## DO & SEE



Tanasut Chindasuthi/Shutterstock.com

From fine art to whisky, Glasgow is a treasure trove of inspiring museums and edutaining events. The omnipresence of architectural masterpieces — including the works of Charles Rennie Mackintosh — makes the city one large open-air museum, where historical beauty blends with the elements of modern life.

### Kelvingrove Art Gallery & Museum



Kelvingrove Museum in Glasgow is an ideal destination for those with limited time to explore the city, offering free admission to its imposing premises in a leafy Victorian park bearing the same name. With 22 galleries spanning diverse themes, the museum caters to a wide range of interests and is also particularly child-friendly. Visitors can immerse themselves in natural history, art, local history and explore a vast array of artifacts from around the globe, with highlights that include works by Salvador Dalí

and Charles Rennie Mackintosh.

Photo: Ian Dick/cc by 2.0/Flickr(image cropped)

Address: Argyle Street, Glasgow

Opening hours: Mon-Thu & Sat 10am-5pm; Fri & Sun

11am-5pm

Phone: +44 141 276 9599

Internet: [www.glasgowlife.org.uk/museums/venues/kelvingrove-art-gallery-and-museum](http://www.glasgowlife.org.uk/museums/venues/kelvingrove-art-gallery-and-museum)

### Glasgow Botanic Gardens



This floral haven in West End is the place to end all city walks and give rest to your senses amidst a plant collection spreading over 20 hectares. Visit

the imposing Kibble Palace, join guided tours and follow the events organised for various ages, all free of charge.

Photo: Renzo Ferrante/CC BY 2.0/Flickr(image cropped)

Address: 730 Great Western Road, Glasgow

Opening hours: Daily 7am-dusk for the Gardens; other hours may vary depending on season

Phone: +44 141 276 1416

Internet: [www.glasgowbotanicgardens.com](http://www.glasgowbotanicgardens.com)

### Glasgow Cathedral



With the first stones laid in 1136, Glasgow Cathedral is the oldest in mainland Scotland, but its origins date back even earlier to the 6th century.

Here you can immerse yourself in the details of Gothic architecture and the relics of medieval history.

Photo: rubiphot/Shutterstock.com

Address: Castle Street, Glasgow

Internet: [www.glasgowcathedral.org](http://www.glasgowcathedral.org)

### Auchentoshan Distillery



Established in 1823, Auchentoshan Distillery proudly proclaims its ties to a city with such history as Glasgow, the establishment also being

an essential part of the local heritage. Through various guided tours and tasting events, visitors can explore the history and the whisky-making process of this single malt distillery, while also indulging in unique cocktail creations and a remarkable gift selection.

Photo: Razoomanet/Shutterstock.com

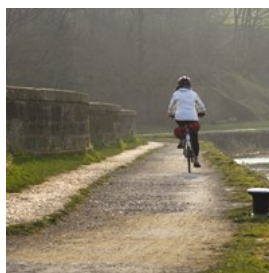
Address: Great Western Road, Clydebank

Opening hours: Tue-Sun 10am-4pm

Phone: +44 138 987 8561

Internet: [www.auchentoshan.com](http://www.auchentoshan.com)

### Cycling in Glasgow



A guided tour by bike is a great way to explore Glasgow's landmarks from a new angle, meet new people and work off last night's haggis. The

tours often touch upon big-name watering holes, and you can choose from a range of themes or even organise a completely custom trip.

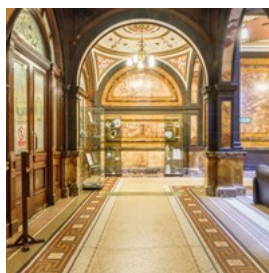
Photo: David Woods/Shutterstock.com

Address: Tours start at 85 Drygate, Glasgow

Phone: +44 778 668 3445

Internet: [www.glasgowbiketours.co.uk](http://www.glasgowbiketours.co.uk)

### Glasgow City Chambers



Inaugurated by Queen Victoria in 1888 and housing the Glasgow City Council since 1996, the City Chambers in George Square is one of the most

iconic elements of Glasgow's cityscape. The building is open for the public to admire the marble ornaments, paintings and imposing rooms such as the banqueting hall.

Photo: User:Colin/CC BY-SA 2.0 DEED/Flickr(image cropped)  
Address: George Square, Glasgow  
Opening hours: Mon-Fri 8:30am-5pm, Sat & Sun closed  
Phone: +44 141 287 4018  
Internet: [www.glasgow.gov.uk/index.aspx?articleid=19136](http://www.glasgow.gov.uk/index.aspx?articleid=19136)

### Pollok Country Park



Whether it's cycling or a relaxing picnic you are after, the city's only, 146-hectare country park is a scenic location for any outdoor programme.

Beyond the treasures of nature — such as the popular Highland cattle — the park also houses the Pollok House and the Burrell Collection with their impressive art collections.

Photo: JohnDoesPictures/CC BY-SA 2.0 DEED/Flickr(image cropped)  
Address: 2060 Pollokshaws Road, Glasgow  
Internet: [www.glasgow.gov.uk/pollokcountrypark](http://www.glasgow.gov.uk/pollokcountrypark)

### The Necropolis



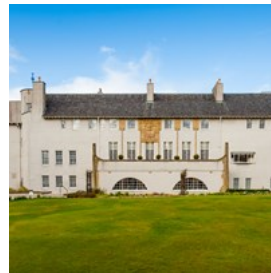
East of the city's prominent cathedral, the Glasgow Necropolis is where fifty thousand — including numerous prominent figures —

found eternal rest over the course of the 19th century. Guided tours are available to explore the architecture and stories preserved in this 15-hectare Victorian cemetery.

Photo: strelka/Shutterstock.com  
Address: Castle Street, Glasgow  
Opening hours: Daily 7am-4:30pm  
Internet: [www.glasgownecropolis.org](http://www.glasgownecropolis.org)

Email: [tours@glasgownecropolis.org](mailto:tours@glasgownecropolis.org)

### House for an Art Lover

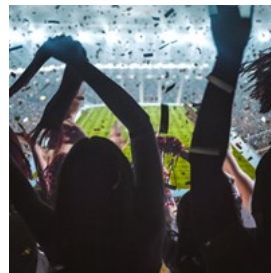


Designed inside and out by the internationally acclaimed Charles Rennie Mackintosh, the House for an Art Lover is an arts centre in Southside's

spectacular Bellahouston Park. The venue is also a popular choice for private celebrations, and houses a café that well lives up to its environment, making for a sublime location for afternoon tea.

Photo: cornfield/Shutterstock.com  
Address: 10 Dumbreck Road, Glasgow  
Phone: +44 141 483 1600  
Internet: [www.houseforanartlover.co.uk](http://www.houseforanartlover.co.uk)

### Celtic Park



The Celtic Football Club was founded in Glasgow in the late 1880s by two Irish priests in a bid to raise money in the city's poor East End. The club

has since become one of the most successful in Scotland and is the winner of over 50 Scottish League Championships and dozens of other cups, including one European Cup. Celtic Park is the perfect place to get a taste of the spirit surrounding the club, and other events too are hosted here at times.

Photo: Vasyl Shulga/Shutterstock.com  
Address: Celtic Park, Glasgow  
Phone: +44 871 226 1888  
Internet: [www.celticfc.com/visit-celtic-park](http://www.celticfc.com/visit-celtic-park)



### University of Glasgow



Through guided tours or individually, visitors can stroll through this imposing campus and explore its 500-year history. On-site

landmarks include the Hunterian Museum, Art Gallery and the Zoology Museum — or why not just soak up vibes at the students' favourite cafés and restaurants.

Photo: Radek Sturgolewski/Shutterstock.com

Address: University Avenue, Glasgow

Phone: +44 141 330 4575

Internet: [www.gla.ac.uk](http://www.gla.ac.uk)

### Road A82 to Inverness



Spanning 270 kilometres, this picturesque route traces its path from Glasgow to Inverness via Fort William. Majestic mountains — including

the highest, Ben Nevis — stand tall on either side of the road, accompanied by twists and turns leading to notable sights such as the legendary Loch Ness and Loch Lomond. Other engaging landmarks include castles like Urquhart and adventurous trails for climbing and hiking, most notably Glen Coe.

Photo: Niccolo Bertoldi/Shutterstock.com

### West Highland Line



This train journey from Glasgow to Mallaig — and through another branch to Oban — transports you into the breathtaking wilderness of western

Scotland not many eyes get to see. Admire the

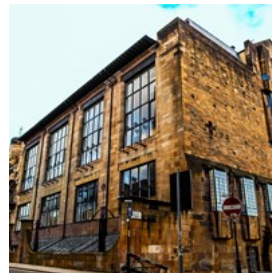
highlands, lakes, national parks and some of the smallest stations in the network, and keep your eyes peeled for the Glenfinnan Viaduct, made famous in Harry Potter movies.

Photo: Ruslan Kalnitsky/Shutterstock.com

Address: Queen Street Station, North Hanover Street, Glasgow

Internet: [www.scotrail.co.uk](http://www.scotrail.co.uk)

### Glasgow School of Art



When it comes to architecture in Glasgow, Charles Rennie Mackintosh is the name you'll hear time and again. Best known for his

work in the Art Nouveau style, Mackintosh left an indelible mark on the city, with the 1898 Glasgow School of Art as the crown jewel. Nowadays, the school isn't just about educating the next generation of artists — it's also about appreciating its rich history.

Photo: Claudio Divizia/Shutterstock.com

Address: 167 Renfrew Street, Glasgow

Public Transport: Cowcaddens underground station (5 minutes' walk)

Phone: +44 141 353 4500

Internet: [www.gsa.ac.uk](http://www.gsa.ac.uk)

Email: [info@gsa.ac.uk](mailto:info@gsa.ac.uk)

### The Burrell Collection



The Burrell Collection, held by many to be one of the world's finest private art collections, was founded in 1983 and donated by industrialist

Sir William Burrell to the City of Glasgow. It includes everything from Chinese porcelain to paintings by Renoir and Cézanne. Various happenings occur throughout the year.

Photo: Finlay McWalter/cc by-sa 3.0/wikimedia(image cropped)  
Address: Pollokshaws Road, Pollok Country Park, Glasgow  
Public Transport: Pollokshaws West  
Opening hours: Mon-Thu & Sat 10am-5pm; Fri & Sat 11am-5pm  
Phone: +44 141 287 2550  
Internet: [burrellcollection.com](http://burrellcollection.com)  
Email: [museums@glasgowlife.org.uk](mailto:museums@glasgowlife.org.uk)

### Glasgow Science Centre



With a mission to bring science to all kinds of audiences, Glasgow Science Centre on the south bank of the River Clyde houses numerous events, workshops and exhibitions. Surely they have IMAX, but it has some serious competitors on the entertainment front, such as the bodyworks show and the science theatre.

Photo: Giu Vicente/Unsplash  
Address: 50 Pacific Quay, Glasgow  
Opening hours: Wed-Sun 10am-5pm and during local school holidays  
Phone: +44 141 420 5000  
Internet: [www.glasgowsciencecentre.org](http://www.glasgowsciencecentre.org)

### King's Theatre



A cherished cultural gem, King's Theatre has been enchanting audiences since its opening in 1904. This historic venue hosts a diverse array of shows, including dance performances, musicals and comedy shows. The theatre also offers workshops as unique opportunities of insight into the world of performing arts.

Photo: Jimmy Baikovicius/CC BY-SA 2.0 DEED/Flickr(image cropped)  
Address: 297 Bath Street, Glasgow  
Phone: +44 844 871 7627  
Internet: [www.atgtickets.com/venues/kings-theatre](http://www.atgtickets.com/venues/kings-theatre)

### Hunterian Art Gallery



This rather peculiar museum consists almost exclusively of items donated by one collector, and Glasgow University student, William Hunter.

These range from rather normal geological artefacts to deformed animal skeletons, scientific curiosities, human organs preserved in jars, and even a mummy.

Photo: George Stubbs/public domain/wikimedia(image cropped)  
Address: The Hunterian, Glasgow University, Glasgow  
Public Transport: Hillhead  
Opening hours: Tue-Sun 10am-5pm, Mon closed  
Phone: +44 141 330 4221  
Internet: [www.gla.ac.uk/hunterian](http://www.gla.ac.uk/hunterian)  
Email: [hunterian-enquiries@glasgow.ac.uk](mailto:hunterian-enquiries@glasgow.ac.uk)

### St Mungo Museum of Religious Life & Art



The museum tackles a rather complex task of exploring the global religious faiths and taking a closer look at what it is that makes them different from one another: their perceptions of life and death, as well as brief histories, are presented in an artistic way.

Photo: Stephen Finn/Shutterstock.com  
Address: Castle Street, Glasgow  
Opening hours: Mon-Thu & Sat 10am-5pm; Fri & Sun 11am-5pm  
Phone: +44 141 276 1625  
Internet: [www.glasgowlife.org.uk/museums/venues/st-mungo-museum-of-religious-life-and-art](http://www.glasgowlife.org.uk/museums/venues/st-mungo-museum-of-religious-life-and-art)  
Email: [museums@glasgowlife.org.uk](mailto:museums@glasgowlife.org.uk)

### Tennents Wellpark Brewery



One of Scotland's favourite breweries now offers tours conducted by knowledgeable guides, who provide visitors with an insight of the over 450-year old brewing tradition of Wellpark Brewery. Beer tasting is included in the tour price and bookings should be made in advance.

Photo: somsak nitimongkolchai/Shutterstock.com

Address: 161 Duke Street, Glasgow

Phone: +44 141 202 7290

Internet: [www.tennents.com](http://www.tennents.com)

### Tenement House



Visit the Tenement House and learn all about what everyday life was like in the early years of the 20th century. The house belonged to Miss Agnes Toward, whose personal belongings are still contained in the building, where gas lighting was installed to portray the original atmosphere of the home.

Photo: Brendan Howard/Shutterstock.com

Address: 145 Buccleuch Street, Glasgow

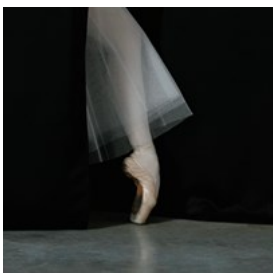
Opening hours: Daily 10am-5pm. Closed from December 23 to January 2

Phone: +44 141 333 0183

Internet: [www.nts.org.uk/visit/places/the-tenement-house](http://www.nts.org.uk/visit/places/the-tenement-house)

Email: [tenementhouse@nts.org.uk](mailto:tenementhouse@nts.org.uk)

### Sharmanka Kinetic Theatre



When you think of theatre, you might not immediately think of mechanical sculptures — but that's exactly what you'll find at the

Sharmanka Kinetic Theatre. The theatre showcases intricate mechanised figures that "perform" thought-provoking shows on life's big questions. Perfect for both kids and adults, it's a collaborative wonder featuring the work of sculptor-mechanic Eduard Bersudsky, theatre director Tatyana Jakovskaya, and light and sound designer Sergey Jakovsky.

Photo: Mart Production/pexels

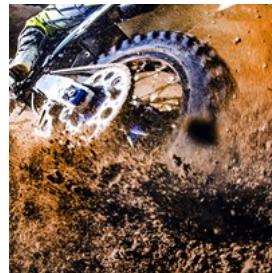
Address: A Centre for Arts & Creativity, 103 Trongate, Glasgow

Phone: +44 141 552 7080

Internet: [sharmanka.com](http://sharmanka.com)

Email: [info@sharmanka.com](mailto:info@sharmanka.com)

### Glasgow Tigers Speedway



For motor sport fans, the Glasgow Tigers Speedway is a must with weekly competitions, excellent viewing points (including from the in-house bar) and even a children's "Growlers Club" where the young ones get to meet the Tiger's mascot.

Photo: Oscar Carrascosa Martinez/Shutterstock.com

Address: The Peugeot, Ashfield Stadium, 404 Hawthorn Street, Glasgow

Public Transport: Bus 75 (Castlemilk/Milton) or 90 (Patrick/Braehead)

Phone: +44 800 916 0087

Internet: [glasgowtigers.co.uk](http://glasgowtigers.co.uk)

### Glasgow West End



The West End area contains some of the best cafes, bars and stores in town (check Woodlands Road for eateries). It is home to the stunning Botanic Gardens, the University campus and



Kelvingrove Museum & Park. Make sure to include Byers Road, Great Western Road and Ashton Lane into your itinerary.

Photo: Antony McAulay/Shutterstock.com

Address: Byres Road, Glasgow

Internet: [peoplemakeglasgow.com/neighbourhoods/west-end](http://peoplemakeglasgow.com/neighbourhoods/west-end)

### Ibrox Stadium



In the 1870s, four young fellows met to talk about their dream to have their own football club.

Rangers Football Club was founded soon after

and is, nowadays, the most successful Scottish football team and eternal rival of Celtic Football Club.

Photo: Maxisport/Shutterstock.com

Address: Ibrox Stadium, 150 Edmiston Drive, Glasgow

Phone: +44 141 580 8500

Internet: [www.rangers.co.uk](http://www.rangers.co.uk)

More Info: The Ibrox Stadium tour lasts approximately 90 minutes.

### Glasgow Central Tours



One of Glasgow's most exhilarating guided tours is one that takes you on an adventure through the hidden, underground part of the iconic central train

station building. Explore the tunnels, winding stairwells, abandoned stations and railway lines all hidden beneath the busy transport hub.

Photo: Moosician/Shutterstock.com

Address: Glasgow Central, Gordon Street, Glasgow

Phone: +44 077 346 47381

Internet: [www.glasgowcentraltours.co.uk](http://www.glasgowcentraltours.co.uk)

Email: [gctours@networkrail.co.uk](mailto:gctours@networkrail.co.uk)

### Riverside Museum



Winner of the European Museum of the Year award (2013), the Riverside Museum of Transport and Travel contains some rare

example of vintage vehicles, ranging from old-model trams to cars and even chariots. The state-of-the-art interactive displays and exhibits are guaranteed to appeal to various age groups.

Photo: Ronnie Macdonald/cc by 2.0/Flickr(image cropped)

Address: Pointhouse Place, Glasgow

Public Transport: Partick

Opening hours: Mon-Thu & Sat 10am-5pm; Fri & Sun 11am-5pm

Phone: +44 141 287 2720

Internet:

[www.glasgowlife.org.uk/museums/venues/riverside-museum](http://www.glasgowlife.org.uk/museums/venues/riverside-museum)

Email: [museums@glasgowlife.org.uk](mailto:museums@glasgowlife.org.uk)

### National Piping Centre



Learn everything about the history and significance of the Highland Bagpipe, the quintessential Scottish musical instrument, and

possibly get a chance to have a go at playing a tune yourself on one of the guided tours offered at the National Piping Center.

Photo: GRSI/Shutterstock.com

Address: 30-34 McPhater Street, Glasgow

Public Transport: Cowcaddens (closest underground station)

Phone: +44 141 353 5551

Internet: [www.thepipingcentre.co.uk](http://www.thepipingcentre.co.uk)

Email: [info@thepipingcentre.co.uk](mailto:info@thepipingcentre.co.uk)



### The Wee Food Tour



Fancy a journey for your taste buds? Look no further than the Wee Food Tour, guided by locals who know their haggis from their "cullen skink" — that's a hearty Scottish soup made with haddock, onions and potatoes, by the way. This popular tour will whisk you away to hidden gems serving the best of Scottish fare, from the traditional to the downright indulgent — think deep-fried pizza! It's a cracking way to get a real flavour of the area, led by people who know it best.

Photo: Ludovic Farine/Shutterstock.com

Address: 272 Bath Street, Glasgow

Phone: +44 141 345 3663

Internet: [www.weefoodtour.com](http://www.weefoodtour.com)

Email: [glasgow@weefoodtour.com](mailto:glasgow@weefoodtour.com)

### The Tall Ship Glenlee



A visit to SV Glenlee is a glimpse into Glasgow's nautical history. This former cargo sailing ship has been lovingly restored and transformed into one of Glasgow's prime attractions. Climb aboard and roam from the captain's quarters to the engine room, soaking up the maritime atmosphere. Got little adventurers in tow? They'll be well entertained in the ship's dedicated play area. Audio guides are at your disposal for a more enriching visit. It's not just a ship; it's a glimpse into Glasgow's nautical history.

Photo: George.Bali/Shutterstock.com

Address: 150 Pointhouse Place, Glasgow

Public Transport: Patrick

Opening hours: End of March through October: Mon &

Wed-Sun 10am-5pm; Tue 11am-5pm

Phone: +44 141 357 3699

Internet: [www.thetallship.com](http://www.thetallship.com)

### Buchanan Street



One of Glasgow's main arteries is a lively, pedestrian-friendly street with an abundance of shopping locales, eateries, street performers, and some prime examples of fine Scottish architecture. A shopping hotspot by day, it's also home to some very popular bars and remains busy until late.

Photo: Artur Kraft/unsplash

Address: Buchanan Street, Glasgow

### Scottish Football Museum



If you are a football fan, then head over to this museum and learn more about the history of Scottish football. The museum is located at Hampden Park and includes a great football collection, 2,500 objects on display to be exact. This is a great pastime pick for the whole family.

Photo: verzellenberg/Shutterstock

Address: Hampden Park, Glasgow

Public Transport: Mount Florida Station / King's Park Station

Phone: +44 141 616 6139

Internet: [www.scottishfootballmuseum.org.uk](http://www.scottishfootballmuseum.org.uk)

Email: [info@scottishfootballmuseum.org.uk](mailto:info@scottishfootballmuseum.org.uk)

## DINING



*Daniel Fader/CC BY-SA 4.0/Wikimedia Commons (image cropped)*

Be it local or international cuisine, locally sourced produce is a given in most Glaswegian restaurants, used in the most creative ways to combine the flavours of Scottish countryside with the world's favourite culinary inventions. Scottish haggis with neeps and tatties is also ubiquitous, and a popular gateway dish to the wee world of Scottish cuisine.

### Ox & Finch



Located in lively Finnieston, Ox and Finch has been a culinary gem from the outset. The stars of the show are the small sharing plates, crafted to blend contrasting yet carefully paired flavours.

The meals are inspired by various cuisines from around the world and are accompanied by an ample selection of drinks from South African wines to Czech beers.

Photo: Marian Weyo/Shutterstock.com

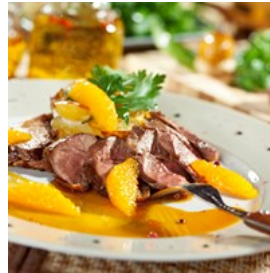
Address: 920 Sauchiehall Street, Glasgow

Opening hours: Mon noon-10pm, Tue-Sun noon-1am

Phone: +44 141 339 8627

Internet: [www.oxandfinch.com](http://www.oxandfinch.com)

### Number 16



A multiple award-winner establishment in West End, Number 16 is a small gourmet restaurant serving artisan dishes inspired by Scottish and international cuisines. There are set menu options and à la carte, and a wine list that features gems from around the globe, from Hungary to Uruguay.

Photo: svry/Shutterstock.com

Address: 16 Byres Road, Glasgow

Opening hours: Mon-Sat noon-2:30pm / 5:30pm-9pm; Sun 1pm-2:30pm / 5:30pm-8:30pm

Phone: +44 141 339 2544

Internet: [www.number16.co.uk](http://www.number16.co.uk)

Email: [info@number16.co.uk](mailto:info@number16.co.uk)

### Tiffney's Steakhouse



Just north of Kelvingrove Park, Tiffney's is an elegant, all-adult restaurant that beckons with the prime cuts of grass-fed beef, matured on the bone for at least 70 days. Complement your steaks with delicious starters — including soup and seafood — and elaborate side dishes.

Photo: hlphoto/Shutterstock.com

Address: 61 Otago Street, Glasgow

Opening hours: Sun 4pm-9pm; Mon, Wed & Thu 4pm-9:30pm; Tue closed; Fri & Sat 4pm-10pm

Phone: +44 141 328 9557

Internet: [www.tiffneys.com](http://www.tiffneys.com)



### Bibi's Cantina



A casual eatery in West End offering a genuinely Mexican culinary experience. The menu is ample and features distinct lunch, dinner and early bird options. Through fresh and vibrant flavours, Bibi's presents signature fare including enchiladas, fajitas and Mexican stew, complemented by a notable selection of beverages such as house wine, margaritas and unique items like Pechuga — Mezcal distilled with chicken.

Photo: David Franklin/Shutterstock.com  
Address: 599 Dumbarton Road, Glasgow  
Opening hours: Wed-Thu & Sun noon-10pm, Fri & Sat noon-11:45pm, Mon & Tue closed  
Phone: +44 141 579 0179  
Internet: [www.bibiscantina.co.uk](http://www.bibiscantina.co.uk)

### Ubiquitous Chip



Established in 1971, Ubiquitous Chip holds somewhat of a legendary status in Glasgow. Serving creative and refined Scottish fare alongside one of Glasgow's most extensive drink selections, the establishment is a stronghold of local cuisine and also attracts crowds with its unique rooms: whether it's the brasserie, whisky bar or the rooftop terrace, each has its distinct atmosphere and offerings.

Photo: Monkey Business Images/Shutterstock.com  
Address: 12 Ashton Lane, Glasgow  
Phone: +44 141 334 5007  
Internet: [www.ubiquitouschip.co.uk](http://www.ubiquitouschip.co.uk)

### Stravaigin



Stravaigin offers a pleasant culinary retreat with a cellar and café bar, both exuding a warm and inviting atmosphere. Scottish cuisine in

Stravaigin is made unique by influences from around the world, inviting diners on a culinary adventure. Whether indulging in those reputable weekend roasts or savouring delectable sharing plates, here you are treated to the finest ingredients from the Scottish countryside.

Photo: Norman Pogson/Shutterstock.com  
Address: 28 Gibson Street, Glasgow  
Opening hours: Daily noon-midnight  
Phone: +44 141 334 2665  
Internet: [www.stravaigin.co.uk](http://www.stravaigin.co.uk)

### Two Fat Ladies at the Buttery



Founded in 1870, The Buttery stands as one of Glasgow's most enduring culinary landmarks, exemplified by a timeless elegance in its interior.

This historic establishment prides itself on presenting the finest local ingredients — from highland venison to Scottish salmon — thoughtfully interwoven with other influences from British and European cuisine.

Photo: vichie81/Shutterstock.com  
Address: 652-654 Argyle Street, Glasgow  
Phone: +44 141 221 8188  
Email: [buttery@twofatladiesrestaurant.com](mailto:buttery@twofatladiesrestaurant.com)

### Gamba



Gamba beckons with its excellent seafood in a chic and modern environment. The restaurant presents an array of finely prepared

dishes including salmon, oyster and cod, enhanced with zesty lemon and aromatic herbs, and complete with a well-curated cheese menu and an extensive selection of wines and cocktails.

Photo: Magdanatka/Shutterstock.com

Address: 225A West George Street, Glasgow

Opening hours: Mon, Tue & Sun closed; Wed-Fri noon-2pm / 5pm-9pm; Sat noon-9pm

Phone: +44 141 572 0899

Internet: [www.gamba.co.uk](http://www.gamba.co.uk)

### Bothy



Tucked away in a West End backyard, The Bothy offers a welcoming ambiance with its rustic interior, creating a cosy dining environment.

Priding itself on sourcing seasonal produce from across the Scottish lands, the restaurant showcases a diverse menu featuring iconic fare such as cullen skink, haggis, venison, alongside an array of artisan cheeses, fresh seafood and some vegan options. Lucky visitors can also enjoy the sun's rays while dining in the garden.

Photo: Kondor83/Shutterstock.com

Address: 11 Ruthven Lane, Glasgow

Opening hours: Sun-Thu noon-midnight, Fri & Sat noon-midnight

Phone: +44 141 334 4040

Internet: [www.bothyglasgow.co.uk](http://www.bothyglasgow.co.uk)

### Cail Bruich



This bright and elegant fine dining establishment is adorned with handcrafted furniture by Glasgow-based designers which, just like the food

menu, is a bow to simplicity and sophistication. The meals are free of frills yet artfully assembled, and made from the best of local ingredients. The all-time favourite is the tasting menu and a promising up-and-comer is the place's own gin, which comes in a variety of flavours.

Photo: Kzenon/Shutterstock.com

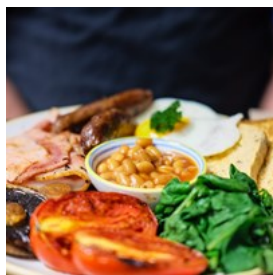
Address: 725 Great Western Road, Glasgow

Opening hours: Lunch: Fri & Sat noon-5pm. Dinner: Tue-Thu 6:30pm-midnight, Fri & Sat 7pm-midnight. Sun & Mon closed

Phone: +44 141 334 6265

Internet: [www.cailbruich.co.uk](http://www.cailbruich.co.uk)

### Café Gandolfi



Situated in esteemed Merchant City, Café Gandolfi welcomes guests into a cosy yet artfully adorned space. This family-run establishment

embraces a sustainable ethos, which is manifested on all fronts from its much-praised breakfast menu to the expertly crafted cocktails. From the art pieces gracing the walls to the thoughtfully sourced ingredients, Gandolfi blends a warm ambiance with a commitment to environmental responsibility.

Photo: Melissa Walker Horn/Unsplash

Address: 64 Albion Street, Glasgow

Opening hours: Mon 8am-5pm, Tue-Sat 8am-8pm, Sun 9am-6pm

Phone: +44 141 552 6813

Internet: [www.cafegandolfi.com](http://www.cafegandolfi.com)



### Nanakusa



An award-winning restaurant serving some of the best Japanese meals in town, Nanakusa works with locally sourced ingredients to

deliver your fix of fresh sushi, noodles and gyoza, only a stone's throw away from some of Glasgow's finest entertainment venues.

Photo: Vinicius Bedit/Unsplash

Address: 441 Sauchiehall Street, Glasgow

Phone: +44 141 332 6303

Internet: [www.nanakusa.co.uk](http://www.nanakusa.co.uk)

### Opium



Opium specialises in oriental fusion cuisine with a menu inspired by Chinese, Malaysian, Singaporean and Thai flavours. The many dim

sum options are great for shared meals, and there is much else to explore — seafood, duck, beef and meatless — if you want to delve deeper into Asian flavours.

Photo: Tony Magdaraog/Shutterstock.com

Address: 191 Hope Street, Glasgow

Opening hours: Wed & Thu noon-2:15pm / 5pm-9:30pm; Fri noon-2:15pm / 5pm-10pm; Sat noon-10pm; Sun 1pm-9:30pm; Mon & Tue closed

Phone: +44 141 332 6668

Internet: [www.opiumrestaurant.co.uk](http://www.opiumrestaurant.co.uk)

### Mother India



An Indian restaurant with a near-legendary status, Mother India serves Indian cuisine with a Scottish twist and places emphasis on healthy

cooking. The establishment has spawned several daughter eateries, while itself remains a major draw for local connoisseurs and a gateway for those new to this savoury world.

Photo: travellight/Shutterstock.com

Address: 28 Westminster Terrace, Glasgow

Phone: +44 141 221 1663

Internet: [www.motherindia.co.uk](http://www.motherindia.co.uk)

### Charcoals



An award-winning, authentic Indian restaurant, which is known by many as one of the best of the genre in the downtown area. The

food here is great value for money and includes a wide range of Indian dishes, from biryani to tandoori variations, enhanced by Charcoals' mission to combine the meals with a communal experience.

Photo: hlphoto/Shutterstock.com

Address: 74 Trongate, Glasgow

Phone: +44 141 221 9251

Internet: [www.charcoals.co.uk](http://www.charcoals.co.uk)

### Crabshakk



Crabshakk, an esteemed seafood haven in Glasgow, presents a wide array of ocean-inspired cuisine featuring mussels, lobster, crab cakes and

more. A culinary shrine for seafood enthusiasts, the establishment emphasizes seasonality and keeps things fresh with a specials board showcasing changing offers, now complemented by its sister restaurant near the Botanic Gardens.

Photo: vichie81/Shutterstock.com

Address: 1114 Argyle Street, Glasgow

Opening hours: Wed-Mon noon-midnight, Tue closed  
Phone: +44 141 334 6127  
Internet: [www.crabshakk.com](http://www.crabshakk.com)  
More Info: Second location is at 18 Vinicombe Street

### Caprese Don Costanzo



Preparing authentic Italian cuisine from locally sourced produce, Caprese beckons with an experience reminiscent of la dolce vita. The ample menu, including both à la carte options and daily specials, caters to a range of palates, featuring delicacies from ravioli to veal Milanese. The courses are enhanced by an extensive wine list with selections directly from the verdant vineyards of Italy.

Photo: [Francesco83/Shutterstock.com](#)  
Address: 13 Woodside Crescent, Glasgow  
Opening hours: Wed-Sun 1pm-10pm, Mon & Tue closed  
Phone: +44 141 332 3070

### Malaga Tapas



This establishment in Southside Glasgow is a real piece of Spain: the warm atmosphere and the diverse menu, featuring tapas made from fresh and vibrant ingredients, are sure to transport you to the Iberian peninsula. This — along with the no-less authentic sherry and cocktail list — makes Malaga Tapas the perfect place to indulge in classic dishes like paella and to sip on a refreshing glass of sangria.

Photo: [Paul\\_Brighton/Shutterstock.com](#)  
Address: 213-215 Saint Andrews Road, Glasgow  
Opening hours: Daily noon-10pm  
Phone: +44 141 429 4604  
Internet: [www.malagatapasrestaurant.co.uk](http://www.malagatapasrestaurant.co.uk)

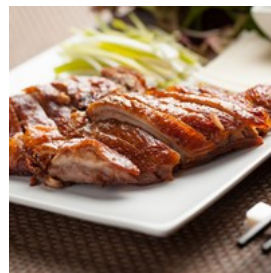
### The Hanoi Bike Shop



The first of Glasgow's Vietnamese eateries, the Hanoi Bike Shop is a casual canteen, where every detail was designed to transport you to the land of pho. Here the signature dish is on offer in many varieties, but you can even assemble your own. Authentic flavours do not end here, as there is also street food and the Vietnamese take on beer and coffee.

Photo: [Anna\\_Pustynnikova/Shutterstock.com](#)  
Address: 8 Ruthven Lane, Glasgow  
Phone: +44 141 334 7165  
Internet: [www.hanoibikeshop.co.uk](http://www.hanoibikeshop.co.uk)

### Lychee Oriental



Renowned for offering sophisticated fine dining, Lychee Oriental is characterised by a modern interior that well complements its eclectic food repertoire. Serving a fusion of Chinese, Thai and Japanese dishes, the place is a must-try for enthusiasts of oriental flavours. Menu variations include a gluten-free menu and a two-course set menu.

Photo: [Bastiaanimage stock/Shutterstock.com](#)  
Address: 59 Mitchell Street, Glasgow  
Phone: +44 141 248 2240  
Internet: [www.lycheeoriental.co.uk](http://www.lycheeoriental.co.uk)



### Thairiffic



As soon as you open the menu at this modern yet no-frills restaurant, you'll see what a treasure you've found: from classics like pad thai and

tom yum to unique interpretations of Thai cuisine, Thairiffic spoils with a wide spectrum of culinary ideas, flavours — and spiciness. The menu also caters to kids and those on a vegan diet.

Photo: jutamas/Shutterstock.com

Address: 303 Sauchiehall Street, Glasgow

Phone: +44 141 332 3000

Internet: [www.thairifficrestaurant.com](http://www.thairifficrestaurant.com)

### CAFÉS



Sebastian Coman Photography/Unsplash

Beyond the well-known coffee chains, Glasgow is also home to numerous gems of cafés, where sustainable and nutritious food is just as important as a good strong caffeine fix. And even if you're a coffee person, be sure to add at least one tea room to your Glaswegian itinerary.

### The Hidden Lane Tearoom



Located in the hip Finnieston area, The Hidden Lane Tearoom offers a warm haven within the neighbourhood's eclectic

environment. This charming establishment caters to tea enthusiasts with its extensive and ever-evolving tea selection, ranging from beloved classics to exotic chai varieties. Whether you're looking to enjoy a hearty breakfast or indulge in afternoon tea, the menu is sure to spoil you with delectable sandwiches and freshly baked scones.

Photo: John Tecuceanu/Unsplash

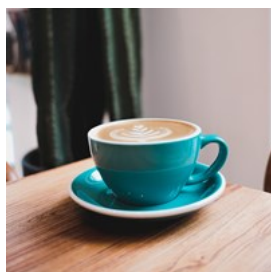
Address: 1103 Argyle Street, Glasgow

Opening hours: Mon-Fri 10am-4:30pm, Sat & Sun 10am-5:30pm

Phone: +44 141 237 4391

Internet: [www.hiddenlanetearoom.com](http://www.hiddenlanetearoom.com)

### Cafe Strange Brew



This café is celebrated as one of the city's premier brunch destinations. Its unassuming yet tastefully simple design sets the stage for a culinary

experience defined by hearty portions of delectable breakfast offerings, both sweet and savory, crafted in great detail to tantalize the senses with rich flavors and vibrant colours.

Photo: Airam Dato-on/Unsplash (cropped)

Address: 1082 Pollokshaws Road, Glasgow

Opening hours: Daily 9am-4pm

Phone: +44 141 440 7290

### The Wild Olive Tree



Although it's easy to miss this café at St George's Tron, you'd better not: with only a few items on the menu — including coffee, soup and scones, all fresh and made on the spot — this place stands as a shelter offering some warmth and tranquillity in the noisiest part of town. As a social enterprise, The Wild Olive Tree is also an active contributor to local charities.

Photo: Ksenija Toyechkina/Shutterstock.com

Address: 163 Buchanan Street, Glasgow

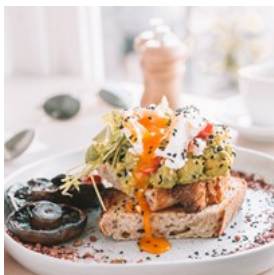
Opening hours: Mon-Sat 10:30am-4:30pm, Sun closed

Phone: +44 141 248 2049

Internet: [www.thewildolivetreecoffee.co.uk](http://www.thewildolivetreecoffee.co.uk)

Email: [thewildolivetreecoffee@gmail.com](mailto:thewildolivetreecoffee@gmail.com)

### Zique's



Whether you're in the mood for something substantial, a quick snack or fine dining, one of Glasgow's best brunch spots is guaranteed to spoil you. Embracing all cuisines from local to Mediterranean to Middle Eastern and now with a bakery in West End, Zique's has something for every diet and occasion.

Photo: Maddi Bazzocco/Unsplash (cropped)

Address: 66 Hyndland Street, Glasgow

Opening hours: Daily 9am-4pm. Small plates menus: Thu-Sat 4pm-9pm

Phone: +44 141 339 7180

Internet: [www.ziques.com](http://www.ziques.com)

### Riverhill Coffee Bar



Enjoy a great cappuccino and superb breakfast food at this popular café located just off Buchanan Street. People love the Riverhill for its delicious sandwiches and home-made pastries, which also make a compelling display on the counter. Grab a freshly ground coffee and sit in the window to watch the happenings of a busy downtown street.

Photo: Jacek Chabraszewski/Shutterstock.com

Address: 24 Gordon Street, Glasgow

Opening hours: Mon-Fri 8am-4pm, Sat 9am-4pm

Phone: +44 141 204 4762

Internet: [www.riverhillcoffee.co.uk](http://www.riverhillcoffee.co.uk)

### Singl-end Cafe & Bakehouse



A vibrant café serving original and finely crafted dishes, using locally sourced and sustainable ingredients. The menu features — catering for multiple diets — homemade bread, delectable desserts and egg dishes, light but substantial lunch options and to wash it all off, everything from cocktails to Italian wines to specialty tea.

Photo: Alex Bayev/Unsplash

Address: 263 Renfrew Street, Glasgow

Opening hours: Daily 9am-5pm

Phone: +44 141 353 1277

Internet: [www.thesingl-end.co.uk](http://www.thesingl-end.co.uk)

More Info: The second location is at 15 John Street, The Italian Centre, Merchant City.



### The Hyndland Café



A family-run business offering all-day breakfast with a decent eggs benedit selection, inviting pastries and an intimate atmosphere. Be seated

outside to get a view of the quaint West End cityscape.

Photo: bady abbas/Unsplash

Address: 96 Clarence Drive, Glasgow

Opening hours: Daily 8am–5pm

Phone: +44 141 334 2719

Internet: [www.hyndlandcafe.com](http://www.hyndlandcafe.com)

### Tchai Ovna



This one-of-a-kind tea house boasts an impressive selection of teas: there are over a hundred varieties to choose from. Enjoy a

fresh brew in the quirky, atmospheric insides of the establishment, popular with students thanks to its convenient location in the bohemian West End close to the University.

Photo: Wiro.Klyngz/Shutterstock.com

Address: 42 Otago Lane, Glasgow

Phone: +44 141 357 4524

Internet: [www.tchaiovna.com](http://www.tchaiovna.com)

## BARS & NIGHTLIFE



Samantha Gades/Unsplash

It's easy to see why Glasgow is a city that never sleeps: it is as much packed with beer and whisky havens hosting gigs as it is with clubs playing ethereal electronic music. Many venues double up as creative hubs and inviting cafés during the day, offering hearty and often vegan grub.

### The Corinthian Club



This exclusive establishment is located in a former courthouse building in elegant Merchant City. Spanning five stunningly designed

floors including a rooftop terrace and a nightclub, The Corinthian was designed for occasions that matter. Indulge in premium drinks from afternoon tea to expertly crafted cocktails, or the flavours of French-inspired haute cuisine.

Photo: Graphic.mooi/Shutterstock.com

Address: 191 Ingram Street, Glasgow

Opening hours: Thu 4pm–midnight, Fri noon–3am, Sat 11am–3am, Sun 11am–8pm

Phone: +44 141 552 1101

Internet: [www.thecorinthianclub.co.uk](http://www.thecorinthianclub.co.uk)

### Bon Accord



An award-winning pub renowned for its excellence in serving ale and malt whisky. With a selection of 800 ales and 500 whiskies, sourced

both locally and globally, Bon Accord surely has something for everyone. The menu features the best of Scottish cuisine through flagship meals such as haggis and steak, and there's classic grub like burgers, too.

Photo: puchkovo48/Shutterstock.com

Address: 153 North Street, Glasgow

Phone: +44 141 248 4427

Internet: [www.bonaccordpub.com](http://www.bonaccordpub.com)

### The Horseshoe Bar



A classic Victorian pub which proudly boasts the longest continuous bar in Europe, spanning an impressive 32 meters.

The Horseshoe Bar offers

a wide array of beverages that are tailored for any occasion, including cocktails, shots and an ample selection of beers, with some unmissable cask ales. The food is equally varied — and also diet-friendly — with burgers, tapas, flatbread and skewers, and buffet options too are available.

Photo: Cedric Weber/Shutterstock.com

Address: 17-19 Drury Street, Glasgow

Opening hours: Daily 11am-midnight

Phone: +44 141 248 6368

Internet: [www.thehorseshoebarglasgow.co.uk](http://www.thehorseshoebarglasgow.co.uk)

### Òran Mór



Having pints at the church is business as usual at Òran Mór, a former place of worship transformed into a multi-purpose

entertainment venue. Live shows are held here on the regular, with the likes of Amy Winehouse having made an appearance in the past. The lunch theatre show is one not to miss, and there's over 300 whiskies at the bar and a menu of pies, burgers and salads in the restaurant.

Photo: NATHAN MULLET/Unsplash

Address: Byres Road, Glasgow

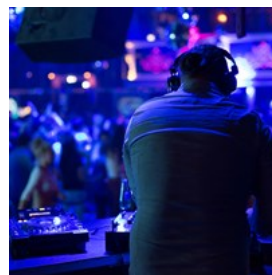
Opening hours: Sun-Wed 10am-1am, Thu 11am-3am, Fri & Sat 10am-3am

Phone: +44 141 357 6200

Internet: [www.oran-mor.co.uk](http://www.oran-mor.co.uk)

Email: [info@oran-mor.co.uk](mailto:info@oran-mor.co.uk)

### SWG3



Studio Warehouse Glasgow in West End is a music venue that hosts a variety of musicians and DJs in a venue comprising of six diverse spaces,

from Acid Bar to the Garden. The venue is also used (and available for hire) for arts exhibitions, concerts festivals, workshops and more.

Photo: Pavel L Photo and Video/Shutterstock.com

Address: 100 Eastvale Place, Glasgow

Phone: +44 141 337 1731

Internet: [www.swg3.tv](http://www.swg3.tv)

### The Pot Still



Whisky connoisseurs will certainly appreciate the wide selection of the noble drink present at this classy establishment, while those new to the scene are readily assisted by the knowledgeable staff for recommendations as to the best pairing choices. Bar food is served — and the pies are not to be missed.

Photo: donfiore/Shutterstock.com

Address: 154 Hope Street, Glasgow

Opening hours: Tue & Sat 11am-11pm, other days  
11am-midnight

Phone: +44 141 333 0980

Internet: [www.thepotstill.co.uk](http://www.thepotstill.co.uk)

### The Flying Duck



This venue is a stronghold of underground culture, where in addition to music events, crowds are drawn here by quizzes, karaoke, film screenings and more. Priding itself on being a bastion of veganism, the place offers a large selection of beer, wine and other drinks — all vegan, of course. Furnished with mismatched items, The Flying Duck is an eclectic space with an effortless chic look.

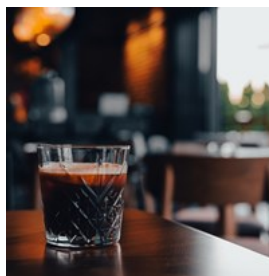
Photo: Vinicius "amnx" Amano/Unsplash

Address: 142 Renfield Street, Glasgow

Phone: +44 141 564 1450

Internet: [www.theflyingduck.org](http://www.theflyingduck.org)

### Chinaski's



Chinaski's is a bar and restaurant named after the up-to-no-good character of Charles Bukowski's novels. The venue carries a legacy in the form of an extensive whisky list, and is also praised for its laid-back garden and the kitchen, where a wide variety of dishes are prepared, inspired by everything from Arabic to Vietnamese cuisine.

Photo: Aleksandar Andreev/Unsplash

Address: 239 North Street, Glasgow

Opening hours: Mon, Tue & Thu 5pm-midnight; Wed & Fri-Sun noon-midnight

Phone: +44 141 221 0061

Internet: [www.chinaskis.com](http://www.chinaskis.com)

### Blackfriars of Bell Street



Blackfriars, located in the heart of Merchant City, is a versatile establishment known for its compelling blend of Italian-style cuisine and a beverage selection that spans continents. Pubgoers can savour a diverse range of European beers alongside a curated collection of whisky from Scotland and the United States. Lively vibes are guaranteed by concerts, pub quizzes and comedy nights.

Photo: ne3p/Shutterstock.com

Address: 36 Bell Street, Glasgow

Opening hours: Daily noon-midnight

Phone: +44 141 552 5924

Internet: [www.blackfriarsglasgow.co.uk](http://www.blackfriarsglasgow.co.uk)



### The 78



Nestled in lively West End, The 78 stands as a hip and inviting destination for those seeking a taste of Europe's finest brews and

casual pub fare. The extensive beer selection is paired with pub quizzes and weekend DJs, making The 78 a welcoming spot for both beer enthusiasts and social revelers alike.

Photo: Josh Olalde/Unsplash

Address: 10-14 Kelvinhaugh Street, Glasgow

Phone: +44 141 576 5018

Internet: [www.the78.co.uk](http://www.the78.co.uk)

### The Glad Cafe



Hailing from southern Glasgow, Glad Cafe is a versatile not-for-profit arts venue. It serves as a vibrant hub for a variety of gigs, creative events

and workshops, aiming to connect people of all ages and backgrounds. Its thrift shop too serves a good cause, and if you're here for a bite, prepare your appetite for the ample brunch and pizza choices — and why not have them as takeaway in adjacent Queen's Park.

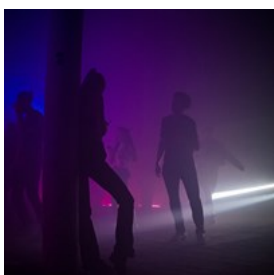
Photo: Kelsey Chance/Unsplash

Address: 1006a Pollokshaws Road, Glasgow

Phone: +44 141 636 6119

Internet: [www.thegladcafe.co.uk](http://www.thegladcafe.co.uk)

### Sub Club



Established in 1987, Sub Club stands as the world's longest-running underground dance club, nestled within a spacious basement measuring 330

square metres. The venue is a haven for the lovers of electronic music, boasting a high-quality sound system that ensures a memorable audio experience. Beyond the banging beats, the club regularly curates cultural events, too.

Photo: Pavel Pjatakov/Unsplash

Address: 22 Jamaica Street, Glasgow

Phone: +44 141 248 4600

Internet: [www.subclub.co.uk](http://www.subclub.co.uk)

### Stereo Café Bar



Located just a few minutes from Buchanan Street, Stereo offers a multifaceted experience as both a vibrant nightclub and a live

music venue, hosting up-and-coming artists as well as established musicians. Beyond its musical offerings, the place has an exciting all-vegan food menu — proving that pierogi and bourguignon are just as delectable when prepared meatless.

Photo: melis/Shutterstock.com

Address: 22-28 Renfield Lane, Glasgow

Phone: +44 141 222 2254

Internet: [www.stereocafebar.com](http://www.stereocafebar.com)

### Broadcast



Broadcast is a live music bar that has managed to stay afloat despite the tough competition of its immediate neighbours and other no less

successful Glasgow establishments. The secret must lie in its high-profile musician guests, solid bar food and a pleasant audience.

Photo: Sinelev/Shutterstock.com

Address: 427 Sauchiehall Street, Glasgow  
Opening hours: Sun-Fri 6pm-3am, Sat 3pm-3am  
Phone: +44 141 332 7304  
Internet: [www.broadcastglasgow.com](http://www.broadcastglasgow.com)

### Bar Soba

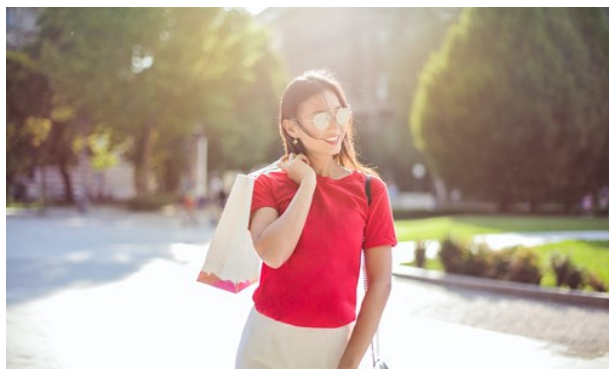


Bar Soba has been around for more than a decade, which has given it time to perfect and polish its cocktail menu and Asian specialities.

They offer Cocktail workshops if you're interested in learning more about mixing drinks and learning to make your own. The apple & ginger mojito is a must!

Photo: Arina P Habich/Shutterstock.com  
Address: 11 Mitchell Lane, Glasgow  
Phone: +44 141 204 2404  
Internet: [www.barsoba.co.uk/location/mitchell-lane-glasgow](http://www.barsoba.co.uk/location/mitchell-lane-glasgow)  
Email: [mitchelllane@barsoba.co.uk](mailto:mitchelllane@barsoba.co.uk)

## SHOPPING



Andrea Piacquadio/Pexels

From the cobbled lanes and vintage shops of West End to the captivating architecture of Merchant City, Glasgow offers an enticing itinerary for the avid shopper, who will be further spoiled by Buchanan Street and the other lively promenades, with malls and boutiques lining up all the way.

### West End

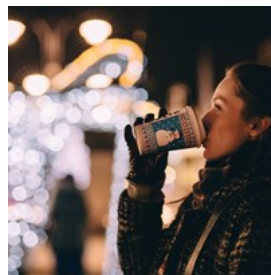


Glasgow's vibrant West End epitomizes contemporary chic with its array of vintage boutiques, hip eateries and verdant parks.

Prominent shopping landmarks such as De Courcy's Arcade and Ashton Lane beckon both residents and visitors to explore its eclectic offerings, while immersing passers-by in a lively urban environment.

Photo: Laura V/Unsplash

### Buchanan Street



Glasgow's premier pedestrian street is dotted all the way with a wide spectrum of boutiques, from mid-range to upmarket, crowned to the north by the expansive Buchanan Galleries.

Photo: freestocks/Unsplash  
Address: Buchanan Street, Glasgow

### Barras Market



The Barras is a justly renowned vintage flea market in the East End. Beyond treasure hunting, it is also a great place to people-watch and to pick up some words of the distinctive Glasgow patter — which might even come in handy when you're bargaining for your next beloved knick-knack.

Photo: Clem Onojeghuo/Unsplash  
Address: 244 Gallowgate, Glasgow  
Opening hours: Sat & Sun 10am-4pm  
Phone: +44 141 552 4601

Internet: [www.barrasmarket.com](http://www.barrasmarket.com)

Email: [Tom.Joyes@glasgow-barrowland.com](mailto:Tom.Joyes@glasgow-barrowland.com)

### Robert Graham's Whisky Shop



In operation since 1874, there are few places as apt as Robert Graham's to find those obligatory bottles to take home as souvenirs. Browse the whisky selection from several Scottish regions, and complete your shopping by adding other liqueurs or cigars to your basket.

Photo: [Jag\\_cz/Shutterstock.com](#)

Address: 111 West George Street, Glasgow

Opening hours: Mon-Sat 10:30am-6pm, Sun noon-5pm

Phone: +44 141 248 7283

Internet: [www.robertgraham1874.com](http://www.robertgraham1874.com)

Email: [info@robertgraham1874.com](mailto:info@robertgraham1874.com)

### Buchanan Galleries



A venue that largely contributes to Glasgow's fame as a shopper's paradise, Buchanan Galleries is an all-encompassing mall with over 80 stores selling fashion items, gifts, electronics and other merchandise for all budgets and styles and from chain stores to gems of boutiques. It also houses cafés and restaurants, featuring everything from premium tea selections to Korean street food.

Photo: [michaeljung/Shutterstock.com](#)

Address: 220 Buchanan Street, Glasgow

Opening hours: Mon-Wed, Fri & Sat 9am-6pm; Thu 9am-7pm; Sun 9am-6pm

Phone: +44 141 333 9898

Internet: [www.buchanangalleries.co.uk](http://www.buchanangalleries.co.uk)

Email: [info@buchanangalleries.co.uk](mailto:info@buchanangalleries.co.uk)

### Dowanside Lane & Ruthven Lane



A haven for the lovers of vintage, these two neighbouring lanes in West End pack a punch with boutiques specialising in antiques, vintage clothing, rarities and collectibles. There's also cobblestones, creative souls and hip restaurants to complement the experience.

Photo: [Moshe Schneider/Unsplash](#)

Address: Dowanside Lane, Glasgow

### My Home Bakery



One always has to queue up at the door — or for seats — at My Home Bakery, a West End establishment whose compelling displays draw many a customer inside, only to uncover an even wider array of freshly made cakes, pastries, scones and sandwiches.

Photo: [MR.MITR SRILACHAI/Shutterstock.com](#)

Address: 59 Hyndland Street, Glasgow

Opening hours: Thu & Sun 10am-3pm; Fri & Sat 10am-4pm

Internet: [www.myhomebakery.co.uk](http://www.myhomebakery.co.uk)

### St Enoch Shopping Centre



It doesn't get much more central when it comes to shopping centres in Glasgow: St Enoch, at the crossing of Buchanan and Argyle streets, is as good as it gets. The range of products covers everything from clothes to books to electronics, while the food court features — in addition to the regulars — some unique options like Indian and Turkish.



Photo: Pressmaster/Shutterstock.com

Address: 55 St Enoch Square, Glasgow

Opening hours: Mon-Fri 9am-7pm, Sat 9am-6pm, Sun 10am-6pm

Phone: +44 141 204 3900

Internet: [www.st-ench.com](http://www.st-ench.com)

### Argyle Street



Stretching for over 3 kilometres all the way from Kelvingrove Park to Buchanan Street and beyond, the city centre's longest street is sprinkled

with stores and eateries of all sorts: while the former caters mainly to followers of popular brands, foodies can indulge in laid-back cafés and international cuisine in hip and unique settings.

Photo: Brooke Cagle/Unsplash

Address: Argyle Street, Glasgow

### Young's Interesting Books



Book lovers need to put this gem of a book store on their Glasgow itinerary: it holds a wonderful selection of literature, from books of

local interest to rare collectibles, as well as a range of unique gifts — guaranteeing that it's worth the small detour.

Photo: John Michael Thomson/Unsplash

Address: 18 Skirving Street, Glasgow

Opening hours: Mon-Fri 11am-6pm, Sat 10am-6pm, Sun noon-5pm

Phone: +44 141 649 9599

### Glickman's Confectionery



Proudly dubbed as the oldest sweet shop in Glasgow, this family-run establishment has been around since 1903. The flavours are guaranteed

to evoke childhood memories in those who grew up in Scotland, and will certainly not leave a curious visitor from elsewhere indifferent. Try the old classics and new creations, made with love by the industrious owners.

Photo: Jasmine Waheed/unsplash

Address: 157 London Road, Glasgow

Opening hours: Tue-Fri 10am-4pm, Sat & Sun 10am-5pm, Mon closed

Phone: +44 141 552 0880

Email: [info@glickmans.co.uk](mailto:info@glickmans.co.uk)

### The Good Spirits Co.



With three locations in town, The Good Spirits Co. is best known for their tasting events, where wine, gin, whisky and tequila enthusiasts

can broaden their horizons. They also operate stores with a large selection of liqueur from all over the world, as well as gifts ranging from books to shakers and jiggers.

Photo: Tsang Siu-Chung/Shutterstock.com

Address: 23 Bath Street, Glasgow

Opening hours: Mon-Wed & Sat 10am-6pm; Thu & Fri 10am-7pm; Sun noon-5pm

Phone: +44 141 258 8427

Internet: [www.thegoodspiritsco.com](http://www.thegoodspiritsco.com)

Email: [info@thegoodspiritsco.com](mailto:info@thegoodspiritsco.com)

More Info: The two other stores are at 105 West Nile Street and 21 Clarence Drive

### Braehead Shopping Centre



Braehead is an exciting shopping complex just outside of Glasgow.

Beyond the abundance of stores selling everything from clothes to homeware

to toys, it also has dining options and some entertainment centres including a laser station and a climbing wall.

Photo: gpointstudio/Shutterstock.com

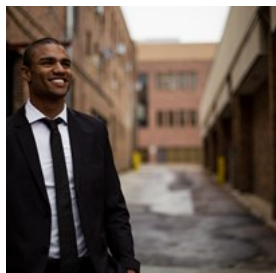
Address: Kings Inch Road, Glasgow

Opening hours: Mon-Fri 10am-9pm, Sat 9am-6:30pm, Sun 10am-6pm

Phone: +44 141 885 1441

Internet: [www.braehead.co.uk](http://www.braehead.co.uk)

### Slaters



Slaters is an iconic, long-standing establishment that specialises in high-quality menswear, women's clothing and even

traditional Highlander costumes. Quality service is part of the shopping experience here, including complimentary alterations.

Photo: Taylor Grote/Unsplash

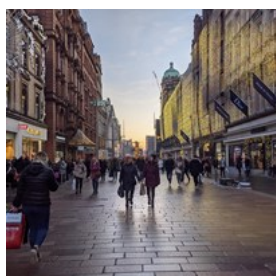
Address: 165 Howard Street, Glasgow

Opening hours: Mon-Sat 8:30am-5:30pm, Sun 11am-4:30pm

Phone: +44 141 552 7171

Internet: [www.slaters.co.uk](http://www.slaters.co.uk)

### House of Fraser



House of Fraser (or Frasers for short) is a shopping centre with a variety of upmarket boutiques. Located in a compelling 19th-century

building on Glasgow's bustling promenade,

Frasers makes for a convenient stop on your shopping itinerary, selling everything from clothing to specialty items and also offering tax-free shopping, beauty services and more.

Photo: Daniel/CC BY 2.0/Flickr(image cropped)

Address: 45 Buchanan Street, Glasgow

Phone: +44 141 221 3880

Internet: [www.houseoffraser.co.uk](http://www.houseoffraser.co.uk)

Email: [glasgow@hof.co.uk](mailto:glasgow@hof.co.uk)

### Silverburn



Located southwest of Glasgow city centre, Silverburn is a go-to if you're looking to do some substantial shopping.

With over a hundred

stores, cinema, play centre and a spacious food court housing a range of restaurants, this is a place where you can tick everything off the list.

Photo: blurAZ/Shutterstock.com

Address: Barrhead Road, Glasgow

Opening hours: Mon-Fri 10am-9pm, Sat 9am-7pm, Sun 10am-7pm

Phone: +44 141 880 3200

Internet: [www.shopsilverburn.com](http://www.shopsilverburn.com)

### TOURIST INFORMATION



*Lukassek/Shutterstock.com*

### Best Time to Visit



The warmer spring and summer months from March to August are the best time to visit Glasgow, when nice temperatures and long daylight hours treat you to pleasant city walks and plenty of other outdoor activities. And with festivals filling the city's entire calendar from Piping Live! in the summer to Burns Night in the winter, the colder months are no less interesting — and have the added bonus of smaller crowds.

Photo: Artur Kraft/Unsplash

### Passport & Visa



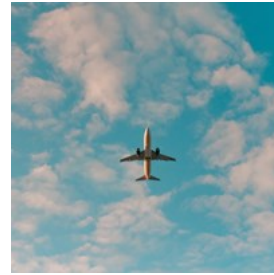
Citizens of the European Union member states, Norway, Liechtenstein, Iceland, Switzerland, and Overseas Countries and Territories (OCT) only

need a valid passport to enter the UK. Residents of the following ten countries do not need an entry visa for stays under 6 months: USA, Canada, Australia, New Zealand, Japan, Singapore, South Korea, South Africa, Hong Kong, and Malaysia. Nationals of some further countries do not need a visa but must hold an entry certificate. Use the UK Government website below to check for specific requirements.

Photo: ConvertKit/Unsplash

Internet: [www.gov.uk/check-uk-visa](http://www.gov.uk/check-uk-visa)

### Glasgow International Airport (GLA)



Glasgow's main airport, located a mere 15 km from the city, has great connections to the city by bus and by train. Glasgow Airport Express is the

airport's official bus service, with multiple buses departing every 10 minutes from the airport (Stance 1), most passing through Buchanan Street Bus Station along the way. Tickets can be purchased directly on board, pre-bought online or using the "First Bus mTickets" app.

The closest train station to the airport is Paisley Gilmour Street, a mile away from the terminal building. McGill's 757 bus service operates that stretch and tickets can be purchased at any Scottish train station or online, via the ScotRail website.

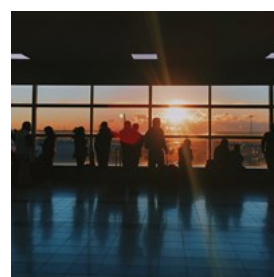
Photo: Philip Myrtorp/Unsplash

Address: Paisley, Renfrewshire, United Kingdom

Phone: +44 344 481 5555

Internet: [www.glasgowairport.com](http://www.glasgowairport.com)

### Glasgow Prestwick Airport (PIK)



Glasgow's second busiest airport is located in the town of Prestwick, approximately a 40-minute drive away from the city centre. The

Stagecoach Western X77 Express Service runs to and from Glasgow Buchanan Street Station directly. There is also a late night and early morning service (X99). Prestwick Airport also has its own railway station.

Taxi service, provided by Streamline Taxis, is also available just outside the terminal building and can be pre-booked.



Photo: Jon Tyson/Unsplash

Address: Aviation House, Prestwick, United Kingdom

Phone: +44 1292 511000

Internet: [www.glasgowprestwick.com](http://www.glasgowprestwick.com)

## Public Transport



Public transport services in Glasgow are provided by SPT and consist of a circular underground line with 15 stations and a range of train and bus

routes. There are several ticket options including day passes for both the city and the surrounding areas.

Subway tickets can be purchased at any underground station: a single ticket is at a fixed price and takes you to any station of the network. Bus tickets are available to purchase from the driver on board (have the exact change ready). Smartcards are a great way to save time and money and are a convenient solution for both commuters and visitors.

Photo: Ant Rozetsky/Unsplash

Address: 131 St Vincent Street, Glasgow

Phone: +44 141 332 6811

Internet: [www.spt.co.uk](http://www.spt.co.uk)

Email: [enquiry@spt.co.uk](mailto:enquiry@spt.co.uk)

## Taxi



The classic London cabs are available all over the city, and can be hailed in the street or ordered by phone. Glasgow Taxi Ltd is a well-established and the largest service provider in the area.

Photo: Maik Winnecke/Unsplash

Phone: +44 141 429 7070

Internet: [www.glasgowtaxis.co.uk](http://www.glasgowtaxis.co.uk)

## Post



Stamps are available from post offices and newsagents. Post offices are generally open between around 9am and 6pm Monday to Friday, and some are also open on Saturdays.

Merchant City post office is only a few minutes from Buchanan Street, but there are other post offices in the centre in West Nile Street, Hope Street and Sauchiehall Street, among others.

Photo: Ali Bakhtiari/Unsplash

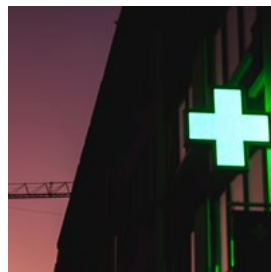
Address: 59 Glassford Street, Glasgow

Opening hours: Mon-Sat 8:30am-5:30pm, Sun closed

Internet:

[www.postoffice.co.uk/branch-finder/3458326/merchant-city](http://www.postoffice.co.uk/branch-finder/3458326/merchant-city)

## Pharmacy



Boots has a wide network of pharmacies in Glasgow with multiple locations in well-frequented places such as Buchanan Street and Central Station, where stores are open every day of the week.

Photo: Serkan Yildiz/Unsplash

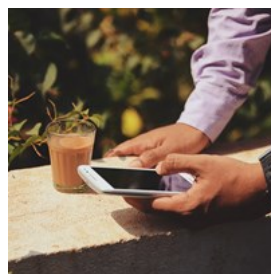
Address: 220 Buchanan Street, Glasgow

Opening hours: Daily 9am-6pm

Phone: +44 141 333 9306

Internet: [www.boots.com](http://www.boots.com)

## Telephone



Country code: +44 Area code: 141

Photo: Rohit Tandon/Unsplash

## Electricity



The standard voltage in Scotland is 230 volts. Plug type G is in use.

Photo: mk. s/Unsplash

## Population

635,640 Glaswegians (2020 estimate)

## Currency

1 British Pound (£1) = 100 pence

## Opening hours

Stores are generally open between around 9 am and 6 pm Monday to Saturday. Opening hours are extended on Wednesdays or Thursdays in some cases, and shopping malls are usually open on Sundays and public holidays, too.

## Internet

[www.peoplemakeglasgow.com](http://www.peoplemakeglasgow.com)  
[www.glasgow.gov.uk](http://www.glasgow.gov.uk)

## Newspapers

The Herald — [www.heraldscotland.com](http://www.heraldscotland.com)  
The Scotsman — [www.scotsman.com](http://www.scotsman.com)  
The Glasgow Times — [www.glasgowtimes.co.uk](http://www.glasgowtimes.co.uk)

## Emergency numbers

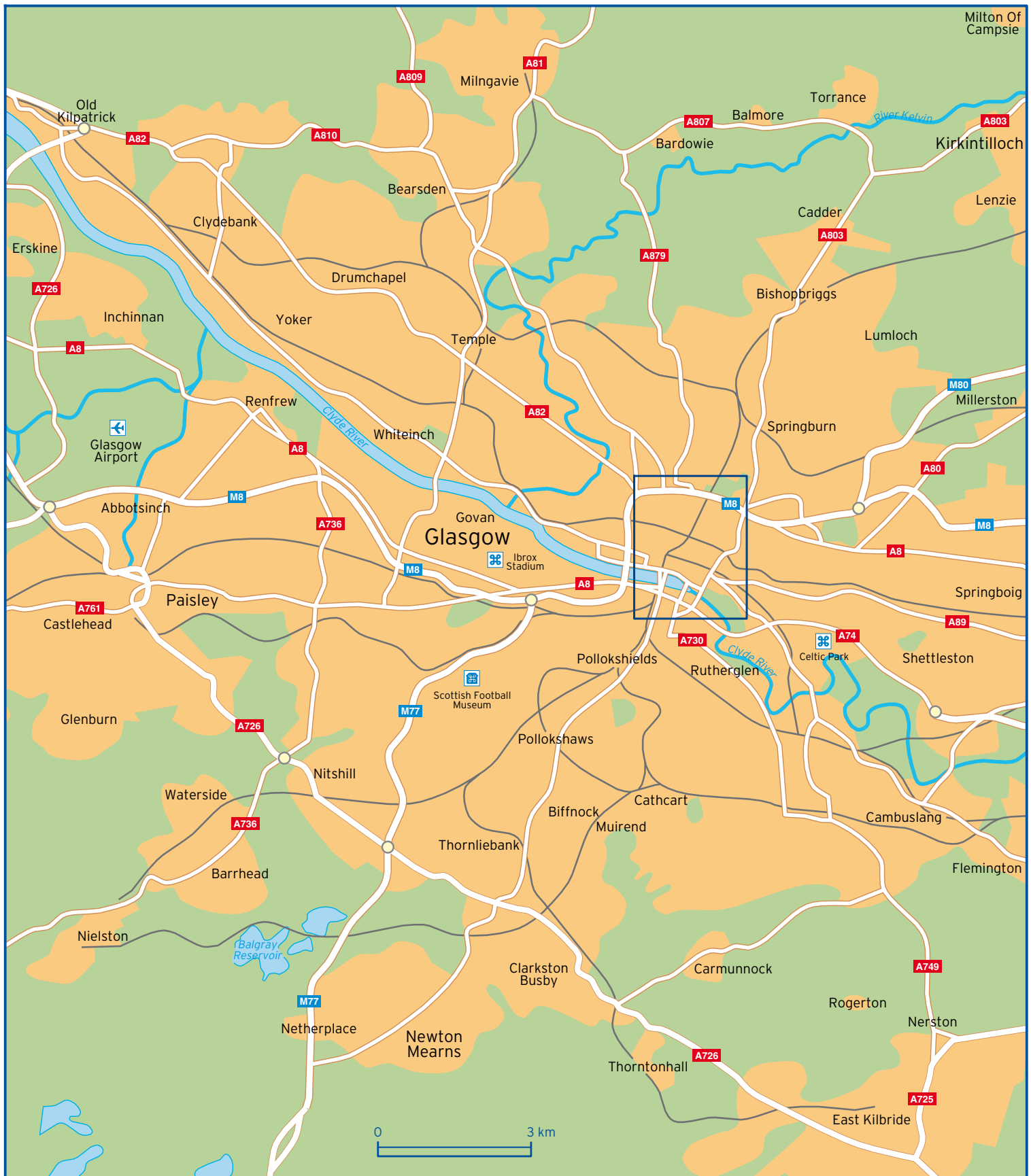
Official emergency number: 999 (ambulance, police, fire)  
Non-emergency number: 101

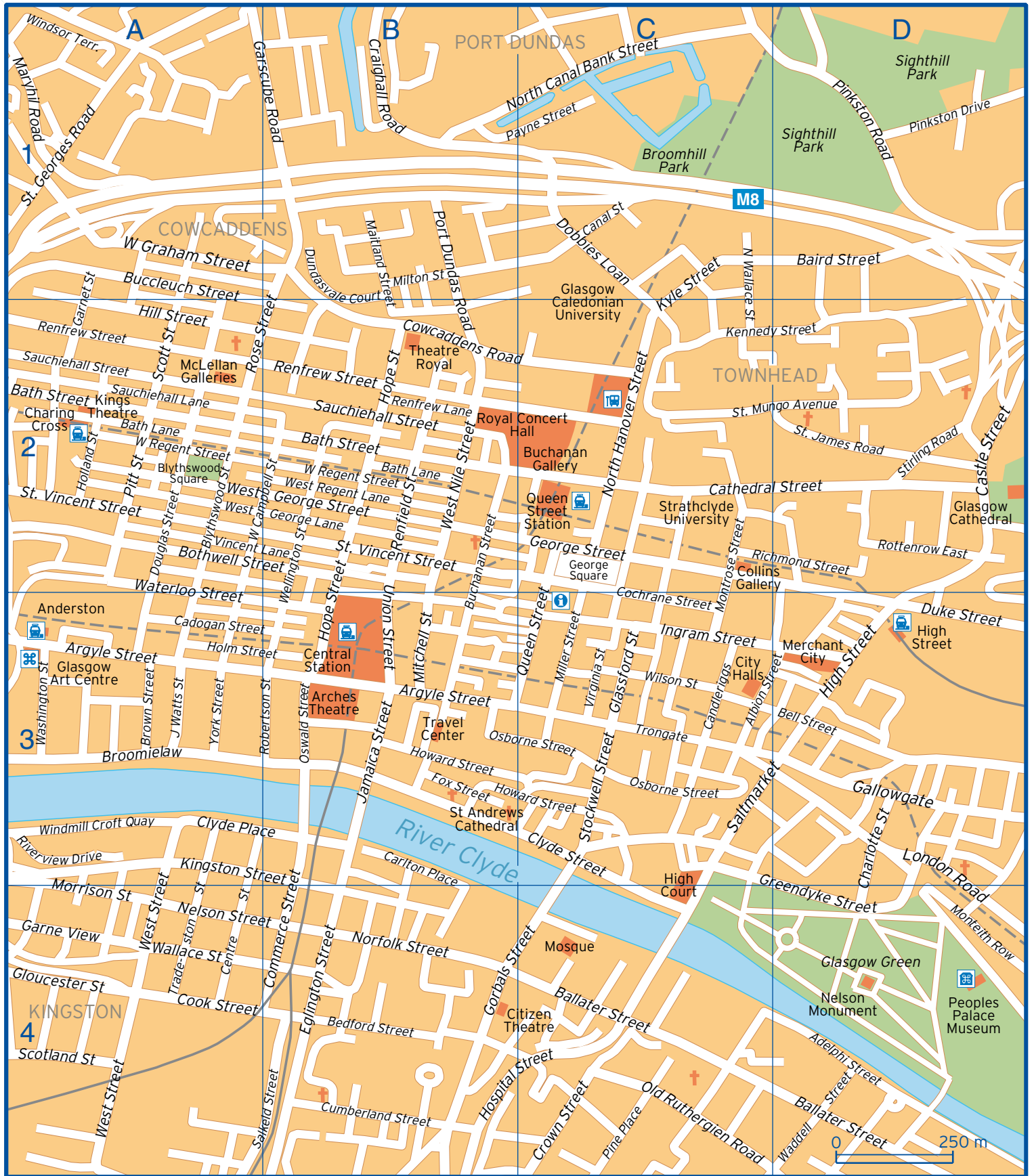
## Tourist information

VisitScotland Glasgow iCentre  
156a/158 Buchanan Street, Glasgow  
[www.visitscotland.com](http://www.visitscotland.com)  
[glasgow@visitscotland.com](mailto:glasgow@visitscotland.com)  
+44 141 566 4083









Adelphi Street	D4	Garscube Road	A1 B1	Queen Street	C2 C3
Albion Street	C3 D3	George Square	C2	Renfield Street	B2
Argyle Street	A3 B3	George Street	C2	Renfrew Lane	B2
Baird Street	D1	Glassford Street	C3	Renfrew Street	A2 B2
Ballater Street	C4 D4	Gloucester Street	A4	Richmond Street	C2 D2
Bath Lane	A2 B2	Gorbals Street	B4 C4	Riverview Drive	A3
Bath Street	A2 B2	Greendyke Street	C4 D4	Robertson Street	B3
Bedford Street	B4	High Street	D3	Rose Street	A2 B1
Bell Street	D3	Hill Street	A2	Rottenrow East	D2
Blythswood Square	A2	Holland Street	A2	Salkeld Street	A4 B4
Blythswood Street	A2	Holm Street	A3 B3	Saltmarket	C3 D3
Bothwell Street	A2 B2	Hope Street	B2 B3	Sauchiehall Lane	A2
Broomielaw	A3	Hospital Street	B4 C4	Sauchiehall Street	A2 B2
Brown Street	A3	Howard Street	B3 C3	Scotland Street	A4
Buccleuch Street	A1 A2	Ingram Street	C3	Scott Street	A2
Buchanan Street	B2 B3	Jamaica Street	B3	St. Georges Road	A1
Cadogan Street	A3 B3	James Watts Street	A3	St. James Road	D2
Canal Street	C1	Kennedy Street	C2 D2	St. Mungo Avenue	C2 D2
Candleriggs	C3	Kingston Street	A3 B4	St. Vincent Street	A2 B2
Carlton Place	B3 B4	Kyle Street	C1 C2	Stirling Road	D2
Castle Street	D2	London Road	D3 D4	Stockwell Street	C3
Cathedral Street	C2 D2	Maitland Street	B1 B2	Tradeston Street	A4
Centre Street	A4	Maryhil Road	A1	Trongate	C3
Charlotte Street	D3 D4	Miller Street	C3	Union Street	B2 B3
Clyde Place	A3 B3	Milton Street	B1	Vincent Lane	A2 B2
Clyde Street	C3	Mitchell Street	B3	Virginia Street	C3
Cochrane Street	C3	Monteith Row	D4	Waddell Street	D4
Commerce Street	B3 B4	Montrose Street	C2 C3	Wallace Street	A4
Cook Street	A4	Morrison Street	A4	Washington Street	A3
Cowcaddens Road	B2 C2	Nelson Street	A4 B4	Waterloo Street	A2 A3
Craighall Road	B1	Norfolk Street	B4	Wellington Street	B2 B3
Crown Street	C4	North Canal Bank Street	B1 C1	West Campbell Street	A2 B2
Cumberland Street	B4	North Hanover Street	C2	West George Lane	A2
Dobbies Loan	C1	North Wallace Street	C1 C2	West George Street	B2
Douglas Street	A2	Old Ruthergien Road	C4	West Graham Street	A1
Duke Street	D3	Osborne Street	B3 C3	West Nile Street	B2
Dundasvale Court	B1 B2	Oswald Street	B3	West Regent Lane	B2
Eglington Street	B4	Payne Street	B1 C1	West Regent Street	A2 B2
Elmbank Street	A2	Pine Place	C4	West Street	A3 A4
Fox Street	B3	Pinkston Drive	D1	Wilson Street	C3
Gallowgate	D3	Pinkston Road	D1	Windmill Croft Quay	A3
Garne View	A4	Pitt Street	A2	Windsor Terrace	A1
Garnet Street	A1 A2	Port Dundas Road	B1 B2	York Street	A3