



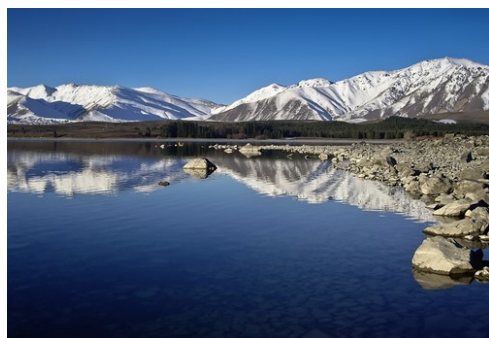
Photo: Pichugin Dmitry/Shutterstock.com



Shaun Jeffers/Shutterstock.com



byvalet/Shutterstock.com



martindeja/Shutterstock.com

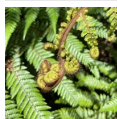
Dunedin, on the rugged east coast of New Zealand's South Island, is a city of style and creativity. Officially founded in 1848 by the Free Church of Scotland, it's home to twenty five thousand students at the University of Otago, who mingle with the town's landed gentry to create an eclectic destination that enthralls all who pass through. Surrounded by a deep blue harbour on one side and rolling misty hills on the other, Dunedin's lush green dales and old world architecture pay tribute to the city's Scottish heritage.

Featured



Moeraki Boulders

Make a side trip to the Moeraki Boulders; these huge spherical boulders are ...



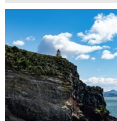
Glenfalloch Woodland Garden

Glenfalloch Woodland Garden spans 30 acres of enchanting landscapes with pan...



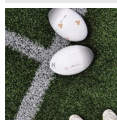
Tunnel Beach

The Tunnel Beach is famous for its unique, picturesque rock formations that ...



Otago Peninsula

The Otago Peninsula is an area of breathtaking natural beauty characterised ...



Forsyth Barr Stadium

Dunedinites love their Rugby Union, and the city's Forsyth Barr Stadium come...

Top 5



Larnach Castle

Dunedin is known for its historic architecture. Head to the Otago Peninsula ...



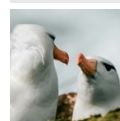
Dunedin Railways

Take the 60-kilometre journey on the historic Taieri Gorge Railway, New Zeal...



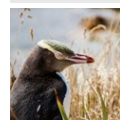
Craft Beers

Craft beers are big news in the alcohol industry. Dunedin is home to two cra...



Royal Albatross Centre

Animal lovers and eco-warriors will adore Dunedin's abundant wildlife. The a...



Yellow-eyed Penguins

The yellow-eyed penguins of the Otago Peninsula are only found in New Zealan...

THE CITY



Ralf Broskvar/Shutterstock.com

The centre of Dunedin's thriving buzz is the Octagon, an eight sided square lined with al fresco cafés and bars, in the heart of the city. You will find the grand architectural masterpiece of Dunedin's original railway on the edge of the CBD, an impressive stately building made from basalt, limestone and granite with traditional clock towers. It is home to the city's annual ID Fashion Week when the country's fashionistas line the sides of the long railway catwalk.

DO & SEE



Evgeny Gorodetsky/Shutterstock.com

There is much to do and see in Dunedin. Drive the winding road of the Otago Peninsula through Macandrew Bay, a quaint coastal settlement by the harbour, ten kilometres from town. Continue to the point of the Peninsula where the blue ocean and white sands meet, to discover yellow eyed penguin settlements, fur seals, sea lions and the elusive albatross, with the only mainland

breeding colony in the world.

Larnach Castle



Dunedin is known for its historic architecture. Head to the Otago Peninsula and discover the country's oldest castle. Larnach Castle was built in 1871 by a love-struck merchant baron and politician, William Larnach, for his darling wife Eliza. The castle has a scandalous history of adultery and suicide and is said to be haunted, so watch your back.

Photo: Deyan Denchev/shutterstock

Address: 145 Camp Road, Dunedin

Opening hours: Daily 9am-6pm

Phone: +64 3 476 1616

Internet: www.larnachcastle.co.nz

Dunedin Railways



Take the 60-kilometre journey on the historic Taieri Gorge Railway, New Zealand's longest privately owned railway. Don't miss the occasion to cruise through Taieri River Gorge's hand dug tunnels and century old wrought iron viaducts, high above the valley floor.

Photo: Henner Damke/shutterstock

Address: Dunedin Railway Station, Anzac Square, Central Dunedin

Phone: +64 3 477 4449

Internet: www.dunedinrailways.co.nz

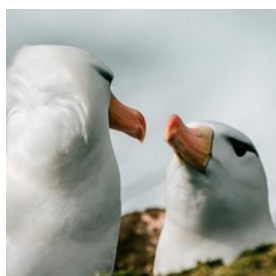
Craft Beers



Craft beers are big news in the alcohol industry. Dunedin is home to two craft beers: Speight's Ale known as "the pride of the south" and Emerson's Brewery. You can visit Speight's Brewery with a 90-minute tour that tracks the timeline of Speight's ale from 1876 to the giant copper vessels of today's brew house, before finishing with a refreshing drink.

Photo: Master1305/shutterstock

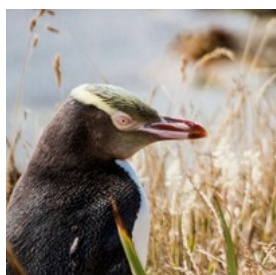
Royal Albatross Centre



Animal lovers and eco-warriors will adore Dunedin's abundant wildlife. The albatross, for example, can fly with its three-metre wingspan at speeds of up to 115 kilometres per hour. You have the chance to see these majestic creatures from the observatory at Dunedin's Royal Albatross Centre at Taiaroa Head.

Photo: Rod Long/unsplash
Address: 1259 Harington Point Road, Harington Point
Phone: +64 3 478 0499
Internet: albatross.org.nz
Email: reservations@albatross.org.nz

Yellow-eyed Penguins

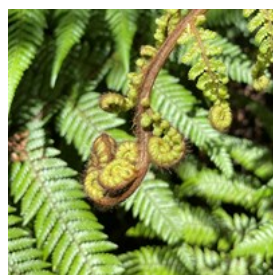


The yellow-eyed penguins of the Otago Peninsula are only found in New Zealand and are the rarest ones in the world, with just 4,000-5,000 penguins currently in existence. You can get up close and personal with these delightful

creatures along with the thriving New Zealand fur seals and sea lions on an eco-tour that combines all three.

Photo: Martyn de Jong/unsplash
Address: Blue Penguins Pukekura, Royal Albatross Centre, 1245 Harington Point Road, Harington Point
Phone: +64 21 225 9962
Internet: www.bluepenguins.co.nz

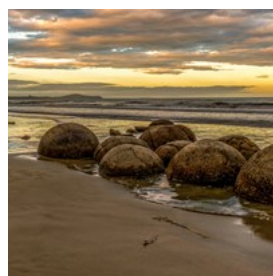
Glenfalloch Woodland Garden



Glenfalloch Woodland Garden spans 30 acres of enchanting landscapes with panoramic views of Otago Harbour. Stroll among rhododendrons, azaleas and native ferns, cultivated here over the 140 years of the garden's history. Each season offers a unique display of colours and fragrances.

Photo: karen walsh/unsplash
Address: 430 Portobello Road, Macandrew Bay, Dunedin
Phone: +64 3 476 1775
Internet: glenfalloch.co.nz/woodland-gardens

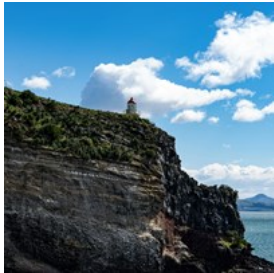
Moeraki Boulders



Make a side trip to the Moeraki Boulders; these huge spherical boulders are littered over a sandy beach under an hour away from Dunedin. Stop at the famed Fleurs restaurant, in the fishing village on the bay at Moeraki, and dine with fresh and smoked seafood on the upper floor and enjoy the view.

Photo: Eddie Bugajewski/unsplash
Address: Moeraki Boulders Beach, Hampden
Internet: www.newzealand.com/int/feature/moeraki-boulders

Otago Peninsula



The Otago Peninsula is an area of breathtaking natural beauty characterised by its volcanic origins. All visitors of the area should undoubtedly plan a scenic drive around because every corner of the Otago peninsula hides a gem ready to be discovered.

Photo: Gulfside Mike/unsplash

Address: Otago Peninsula, Dunedin

Tunnel Beach



The Tunnel Beach is famous for its unique, picturesque rock formations that offer plenty of material to work with when photographing. Don't miss the man made tunnel leading to the beach made by a local resident.

Photo: donvictorio/shutterstock

Address: Tunnel Beach Road, Dunedin

Toitu Otago Settlers Museum



Toitū Otago Settlers Museum offers a unique insight into New Zealand's early history, detailing the first settlers' experiences on the islands. Moreover, admission is free, so save some time for this attraction and you won't be disappointed.

Photo: trabantos/shutterstock

Address: 31 Queens Gardens, Central Dunedin

Opening hours: Daily 10am-5pm

Phone: +64 3 477 5052

Internet: www.toituosm.com

Email: toituosm@dcc.govt.nz

Forsyth Barr Stadium



Dunedinites love their Rugby Union, and the city's Forsyth Barr Stadium comes alive with sports-mad students when the Otago Rugby Team is playing at home. Even if you don't go crazy over sports, watching a match here is still an exciting experience.

Photo: WRUGBY/pixabay

Address: Murrayfield Street, South Dunedin

Phone: +64 3 479 2823

Internet: forsythbarrstadium.co.nz

Baldwin Street

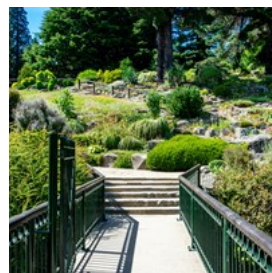


With its 35 degree gradient, Baldwin Street in Dunedin ranked as the world's steepest street. In 2019, the title was transferred to Welsh Ffordd Pen Llech by a 2.45% gradient. If you choose to take the challenging walk uphill, notice the whimsical look houses lining the road had to take on to adjust to the ascent angle.

Photo: Deyan Denchev/Shutterstock.com

Address: Baldwin Street, Dunedin

Dunedin Botanic Garden



Dunedin Botanic Garden, New Zealand's first, covers 33 hectares with over 6,800 plant species. Enjoy hill views, native bird songs, and attractions like the Edwardian Winter Garden, Japanese Garden, and expansive rock garden.

Perfect for a peaceful stroll or picnic.

Photo: Duskfall Crew/unsplash

Address: 36 Opoho Road, Dunedin North

Opening hours: Daily from dawn to dusk

Phone: +64 3 477 4000

Internet: dunedinbotanicgarden.co.nz

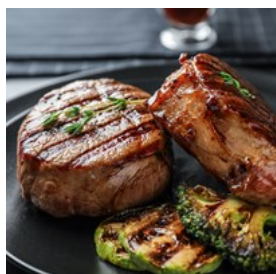
DINING



LeS/Shutterstock.com

Surrounded by water and farmland, Dunedin has access to some of the country's best and freshest seafood, meat, and vegetables. Not far from New Zealand's oyster country on the south coast, Bluff oysters are at their best around April. Whitebait, a comfort food favourite, is dipped in batter and fried pancake style, and can be found in any fish and chip shop. Dining in Dunedin is mostly casual, with a handful of fine dining options.

Bacchus Wine Bar & Restaurant



Bacchus Wine Bar & Restaurant consistently wins the NZ Beef and Lamb Hallmark of Excellence Award.

Understated and

sophisticated, Bacchus restaurant's interior features a bright, light space, serving a menu of hearty modern New Zealand cuisine.

Photo: New Africa/shutterstock

Address: 12 The Octagon, 1st Floor, Central Dunedin

Phone: +64 3 474 0824

Internet: bacchusdunedin.nz

Plato



With its waterfront setting and delectable seafood, dining at Plato is a truly rewarding experience. The casual environment belies a

menu worthy of the finest establishments. The dishes pair excellently with hard-to-beat Central Otago wines and local beer.

Photo: [adoproducciones/pixabay](https://www.adoproducciones.com/)

Address: 2 Birch Street, Central Dunedin

Phone: +64 3 477 4235

Internet: www.platocafe.co.nz

Email: plato@platocafe.co.nz

Speight's Ale House



At Speight's Ale House, you can dine inside the brewery while enjoying traditional, delicious pub fare. Make sure to save a night to dine here

because the restaurant won't let you down, and neither will the outstanding beers. The selection includes the original Gold Medal Ale, Triple Hop Pilsner, Distinction Ale, Old Dark, Empire IPA, and even a cider.

Photo: [NatashaPhoto/Shutterstock.com](https://www.shutterstock.com/)

Address: 200 Rattray Street, Central Dunedin

Phone: +64 3 471 9050

Internet: www.thealehouse.co.nz

Best Cafe



Best Cafe, one of New Zealand's oldest fish and chipperies, has been serving traditional fish and chips since 1932. Specialising in Bluff

oysters and fresh local fish, their signature Blue Cod is a must-try.

Photo: Shebeko/Shutterstock.com

Address: 30 Stuart Street, Central Dunedin

Opening hours: Daily 11:30am-2pm / 5pm-8pm

Phone: +64 3 477 8059

Internet: bestcafe.co.nz

Email: enquiries@bestcafe.co.nz

Etrusco at the Savoy



If you want to experience a fine and elegant dining experience in Dunedin, Etrusco at the Savoy serves delightful Italian dishes and is the perfect

venue for a special occasion. From the beautiful interior to the professional service, everything at Etrusco is truly top-notch.

Photo: Maffi/shutterstock

Address: The Savoy Building, 8 Moray Place, Central Dunedin

Phone: +64 3 477 3737

Internet: www.etrusco.co.nz

Parcels Restaurant



Parcels Restaurant at Distinction Dunedin Hotel offers expertly crafted dishes in a refined setting. Enjoy private dining in converted vaults

from Dunedin's former Chief Post Office, adding a touch of elegance and nostalgia to your meal.

Photo: OlgaBombologna/shutterstock

Address: Distinction Dunedin Hotel, Water Street, Central Dunedin

Phone: +64 3 471 8543

Internet: www.distinctionhotelsdunedin.co.nz/dunedin-hotel-accommodation/parcels-restaurant

Potpourri Vegetarian Cafe



Potpourri is a relaxed establishment which can be considered both a restaurant and a cafe, according to your needs. Potpourri serves

high-quality vegetarian food and boasts quick, efficient service, affordable prices and a lovely atmosphere.

Photo: Hashem Issam Alshanaheh/shutterstock

Address: 97 Stuart Street, Central Dunedin

Opening hours: Mon-Fri 8am-2:30pm, Sat & Sun 9am-2pm

Phone: +64 3 425 0024

Internet: www.potpourricafe.co.nz

Pearl Diver



Pearl Diver is a cosy, 70s-inspired bar offering delicious wood-fired pizza and snacks, paired with eclectic music. With its inviting ambiance and

live music, it's the perfect spot to unwind and enjoy good food.

Photo: Brent Hofacker/Shutterstock.com

Address: 73 Saint Andrew Street, Central Dunedin

Phone: +64 3 926 6491

Internet: www.instagram.com/pearldiverdunedin

CAFES



Nathan Dumlao/unsplash

University towns rely on coffee to keep the students going. Combine this with an art scene that relies on coffee to keep up the flow of inspiration — and you get a Mecca for coffee lovers. Dunedin is no exception, with quirky unique cafes serving exquisite coffee beans. Most of Dunedin's cafe society is found around the Octagon area, in the University, around George Street, and in the swanky suburbs of St Clair, Roslyn and Highgate.

The Fix



At The Fix, enjoy freshly roasted coffee made from top-quality Arabica beans, paired with delicious snacks and fast WiFi. The owners roast their beans

daily, ensuring a premium coffee experience every time.

Photo: Sveta Y/shutterstock

Address: 15 Frederick Street, Dunedin North

Phone: +64 3 479 2660

Internet: thefixdunedin.co.nz

The Good Oil Cafe



At The Fix, enjoy freshly roasted coffee made from top-quality Arabica beans, paired with delicious snacks in a wireless hotspot. The owners roast their beans daily, ensuring a premium coffee experience every time.

Photo: 5PH/Shutterstock.com

Address: 314 George Street, Central Dunedin

Phone: +64 3 479 9900

Internet: www.thegoodoilcafe.co.nz

Ironie



Tucked away from the bustling tourist spots, Ironie Cafe & Bar offers an intimate ambiance with ample outdoor space. Enjoy a delicious meal or a strong coffee in a relaxed setting, away from the crowds.

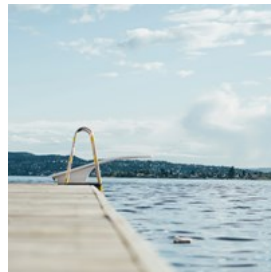
Photo: kpgolfpro/pixabay

Address: 9 Anzac Avenue, Central Dunedin

Phone: +64 3 477 9988

Internet: www.ironiecafebar.co.nz

Long Dog Cafe



Long Dog Cafe, located next to St Clair Hot Salt Water Pool, is a perfect stop after a walk along St Clair Beach. Enjoy wholesome, locally

sourced food, delicious desserts and quality coffee in a scenic setting. Be sure to try the cinnamon scrolls!

Photo: Foundry Co/pixabay

Address: St Clair, Dunedin

Opening hours: Mon-Fri 7am-3:30pm, Sat & Sun
7:30am-3:30pm
Phone: +6434558463
Internet: www.instagram.com/longdogdunedin

Common Ground Espresso



Common Ground Espresso is a small batch coffee roastery in South Dunedin, dedicated to quality and kindness. Supplying local cafés with

top-notch single origin beans, they also offer expertly crafted coffee and take-home beans for brewing. A hidden gem in an industrial area, it's a must-visit for coffee enthusiasts.

Photo: Thom Holmes/unsplash
Address: Strathallan Industrial Estate, 11/4 Strathallan Street, South Dunedin
Opening hours: Mon-Fri 7am-2pm, Sat 8:30am-12:30pm, Sun closed
Phone: +64 3 455 5918
Internet: <https://commongroundespresso.co.nz/>

Dispensary Otago University



Dispensary at Otago University serves locally roasted coffee from Common Ground Espresso and offers a selection of fresh, healthy and delicious food. Conveniently located, it's a top spot for excellent lattes, sandwiches and scones, all served by friendly staff. Perfect for a quick stop on campus.

Photo: K8/unsplash
Address: 84A Albany Street, Dunedin North
Opening hours: Mon-Fri 8am-3:30pm, Sat & Sun closed
Phone: +64 3 470 9499
Internet: www.dispensarycafes.co.nz
More Info: Dispensary has a second location at Dunedin Hospital.

BARS & NIGHTLIFE



bbernard/Shutterstock.com

It is important to get your days right in Dunedin. Like any other place in the world, the locals dictate the buzz: a pub may be humming on a Thursday, but never on a Monday, a bar may be the place to go on a Wednesday, but dead quiet on a Saturday. Have a chat with the locals, especially students; they will know where to go and when. Time it right, and you will be swept up in an intelligent bar scene worthy of any underground city. Dunedin specialises in intimate cocktail bars where conversations abound or rowdy pubs with live music. There is something for all drinking palates and pleasures, so pull up a stool.

The Octagon



The Octagon is the main entertainment district of Dunedin, while Dunedin North offers some pubs and bars that cater especially to younger patrons. This eight-sided square is the place to be, particularly in the summer, whether for an evening stroll or a bar-to-bar tour, sipping refreshing cocktails.

Photo: Ralf Broskvar/shutterstock
Address: The Octagon, Dunedin

Pequeño Mixology Lounge



Dunedin's best-kept local secret, Pequeño Mixology Lounge, is tucked down the laneway opposite the Rialto Cinemas on Moray Place, in the outer

Octagon. Here you can expect professional service, live music, and Spanish-inspired cocktails in a super chic setting.

Photo: Ambitious Studio/Rick Barrett/unsplash

Address: 50 Princes Street, Central Dunedin

Phone: +64 3 477 7830

Internet: www.instagram.com/pequenomixologydunedin

Brew Bar



Brew Bar, situated in Dunedin's lively Octagon area, offers refreshing drinks and tasty food in a quirky Kiwi setting with wooden furniture. By

night, enjoy live music from DJs and acoustic bands in this vibrant spot.

Photo: Viachaslau Kraskouski/Shutterstock.com

Address: 12 The Octagon, Dunedin

Phone: +64 3 477 3776

Internet: brewbar.nz

The Baaa Sports Bar & Grill



This is one of Dunedin's most popular sports and karaoke bars. The Baaa will sort you out with drinks, food, and live sporting broadcasts. It's a

great spot to meet locals who are here to enjoy a beer and chat, as well as students, always ready to have fun and party.

Photo: Pressmaster/Shutterstock.com

Address: 746 Great King Street North, Dunedin North

Phone: +64 3 477 7718

Internet: www.instagram.com/thebaaabar

Emerson's Brewery



Emerson's Brewery, established by Richard Emerson in 1992, is a Dunedin favourite. With an outdoor beer garden, it serves craft beer and a

varied menu. Guided tastings and brewery tours are available, making it a must-visit for beer lovers. Dogs are welcome, too!

Photo: Anton Vierietin/shutterstock

Address: 70 Anzac Avenue, Central Dunedin

Phone: +64 27 238 4907

Internet: emersons.co.nz

Speight's Brewery & Ale House



Speight's Brewery, established in 1876, is New Zealand's oldest operational brewery. Experience a guided tour through the historic

Dunedin site, learn about the brewing process, and enjoy tastings of award-winning beers. Visit the Alehouse next door for a tasting tray perfectly paired with your meal. Don't forget to fill your bottle with fresh spring water from the tap outside.

Photo: Bohdan Stoczek/unsplash

Address: 200 Rattray Street, Central Dunedin

Phone: +64 3 477 7697

Internet: www.speights.co.nz

Email: tours@speights.co.nz

Inch Bar



Inch Bar is a tiny, quirky spot known for its friendly vibe, live local music, and unique decor vaguely inspired by Gaudi. Enjoy a selection

of local beers and mulled gin while mingling with welcoming locals. The bar's tiny stage regularly holds local musicians and comedians. A true hidden gem.

Photo: Phung Nguyen/pixabay

Address: 8 Bank Street, Opoho, Dunedin

Phone: +64 3 473 6496

Internet: www.instagram.com/inchbardunedin

SHOPPING



connel/Shutterstock.com

ID Fashion Week put Dunedin on New Zealand's fashion map. This one-week festival dedicated to fashion is held annually, in the end of February, when local designers make good on the international circuit. Tanya Carlson, Tamsin Cooper and Nom D strut their stuff alongside emerging designers.

Port Chalmers



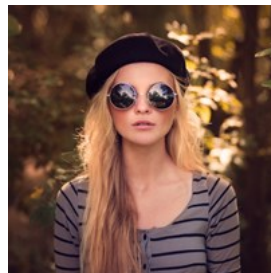
Port Chalmers, a short drive from Dunedin, is a historic harbourside town with a vibrant arts community. Explore eclectic galleries, independent shops, and relaxing cafés, all set within charming historic buildings.

Photo: Henry Han/pexels

Address: Port Chalmers, Dunedin

Internet: www.portchalmers.com/shopping

Plume



Dunedin's fashion district is centred mainly on George Street, with Plume leading the way. Founded in 1978, this store stocks international designers like Comme des Garçons and Costume National, alongside local favourites such as Nom D and Zambesi.

Photo: Aleshyn_Andrei/Shutterstock.com

Address: 310 George Street, Central City

Phone: +64 3 477 9358

Internet: www.nomdstore.com

Otago Farmers' Market



Fresh local produce and delicatessen items are abundant at the local Farmers' Market, where much of the produce is organic. While shopping for healthy and tasty food, you'll likely get hungry, but don't worry — there are plenty of options to grab a bite as well.

Photo: Matej Kastelic/shutterstock

Address: 36 Anzac Avenue, Central Dunedin

Opening hours: Sat 8am-12:30pm
Phone: +64 03 471 6178
Internet: otagofarmersmarket.org.nz

Meridian Mall



Dunedin's main shopping mall, the Meridian, offers a wide variety of shops and boutiques to choose from, including popular brands like Cue,

Meccano, and Pandora. The mall is also well-equipped when it comes to food, offering a range of meal options at the food court to satisfy any craving.

Photo: Drazen Zigic/shutterstock
Address: 285 George Street, Central Dunedin
Phone: +64 3 777 3440
Internet: www.meridianmall.co.nz

George Street



Dunedin's fashion district can be found mainly on George Street, with Plume as the reigning queen among the huge variety of fashion shops and boutiques that line both sides of the street. Also, New Zealand is synonymous with sheepskin and Dunedin's best sheepskin and leather goods are to be found at Hides, on George Street.

Photo: Creative Lab/shutterstock
Address: George Street, Dunedin

University Book Shop



Contrary to what the store's name might suggest, the University Book Shop doesn't only specialise in school books but offers a wide range of

literature for all tastes. This is heaven for every book lover out there.

Photo: luminaimages/Shutterstock.com
Address: University of Otago, 378 Great King Street, Dunedin North
Phone: +64 3 477 6976
Internet: www.unibooks.co.nz

Golden Centre Mall



The Golden Centre Mall offers several shopping opportunities across various categories such as fashion, books, health and beauty, food, and

much more. While it has a smaller selection of stores than the Meridian, it boasts a more varied and higher quality range of products, along with an international food court.

Photo: Andresr/Shutterstock.com
Address: 251 George Street, Central Dunedin
Phone: +64 3 477 8544
Internet: goldencentre.co.nz

The Scottish Shop



Did you know that Dunedin is the old Gaelic name for Edinburgh? Pay tribute to the city's Scottish beginnings by visiting the centrally

located Scottish Shop, where you can find traditional kilts, attire, and much more. Even if you don't end up wearing a kilt, the visit will be a cultural experience in itself.

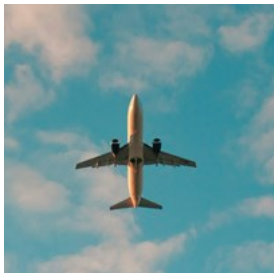
Photo: Ekaterina Pokrovsky/Shutterstock.com
Address: 120 Stuart Street, Central Dunedin
Phone: +64 3 477 9965
Internet: www.scottishshop.co.nz

TOURIST INFORMATION



Filipe Frazao/Shutterstock.com

Dunedin International Airport (DUD)



Dunedin International Airport is located 22 kilometres from the city centre, but since there is currently no public transport service

available, you should book a shuttle instead. Shuttle services operate for varying costs and time will be determined by passenger drop offs, but expect anything from twenty to forty minutes. You can book a ticket in advance online.

A taxi ride will take approximately 20 minutes. Also, most major rental car companies are represented at Dunedin International Airport.

Photo: Philip Myrtorp/unsplash

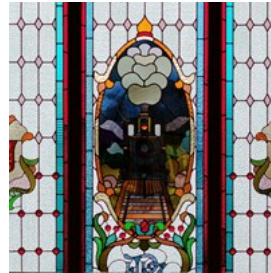
Address: 25 Miller Road, Momona

Phone: +64 3 486 2879

Internet: www.dunedinairport.co.nz

More Info: Also known as Momona Airport

Public Transport



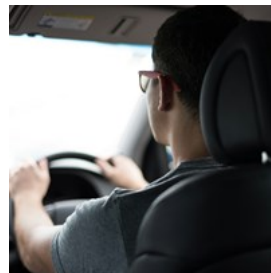
Dunedin has a compact city centre, making it easy to walk to the majority of the tourist attractions. The public transport service

operated by Orbus mainly caters to students and locals who often need to reach the more remote areas of the city.

Photo: K8/unsplash

Internet: www.orc.govt.nz/orbus/dunedin-bus-timetables

Taxi



The city has an efficient cab system with taxis working around the clock. Most places within Dunedin are no more than twenty minutes

away by car, the Otago Peninsula can be reached within fifteen to twenty minutes, and Port Chalmers within half an hour.

Photo: Art Markiv/unsplash

Phone: +64 3 477 7777

Internet: dunedintaxis.co.nz

Post



Post offices in Dunedin are run by NZ Post, providing several services throughout the town. The offices have a red sign on the outside. One of the

post offices in the city is the NZ Post Centre Dunedin, where you can post parcels, letters and purchase postage.

Photo: Diana Light/unsplash

Address: NZ Post Centre Dunedin, Golden Centre, 251 George Street, Central Dunedin

Opening hours: Mon-Fri 9am-6pm, Sat 10am-5pm, Sun 10am-4pm
Phone: +64 3 983 1425
Internet: www.nzpost.co.nz

Pharmacy



Pharmacies, often referred to as 'chemists' in New Zealand, are typically open during standard retail hours, generally 9am to 5:30pm on weekdays. However, hours can extend to late evenings and weekends in larger cities and shopping centres.

New Zealand's largest pharmacy chains are Unichem and Life Pharmacy, with stores spread nationwide. These pharmacies stock a wide range of over-the-counter medicines, healthcare products, and often provide additional services like flu vaccinations.

If you are looking for a well-equipped pharmacy in Dunedin, check out Albany Street Pharmacy.

Photo: Karolina Grabowska/pexels

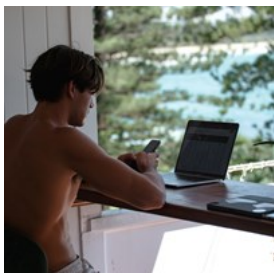
Address: Albany St Pharmacy, 27 Albany Street, Dunedin North, Dunedin

Opening hours: Mon-Fri 8:30am-5:30pm, Sat 10am-1pm, Sun closed

Phone: +64 3 477 5115

Internet: albanyst.co.nz

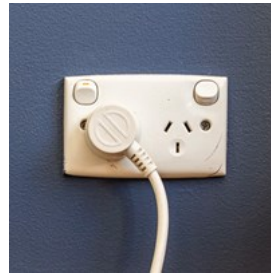
Telephone



Country code: +64 Area code: (0)3

Photo: Mark Broadhead/unsplash

Electricity



New Zealand operates on a 230/240V supply voltage and 50Hz frequency. The country uses Type I power plugs, which feature two flat

pins forming a 'V' shape, along with a grounding pin. This standard is also commonly used in Australia, Argentina, China, and several Pacific island nations. Remember to pack a universal adapter if your devices use a different plug type to ensure hassle-free charging.

Photo: Mitchell Luo/unsplash

Population

106,200 Dunedinites (2023)

Currency

New Zealand Dollar (NZD) = 100 cents

Opening hours

Generally shops are open Monday to Friday from 9 am to 5:30pm and on Saturdays from 9:30am to 1pm.

Internet

www.dunedinnz.com/visit

Newspapers

The Otago Daily Times: www.odt.co.nz

NZ Herald: www.nzherald.co.nz

Emergency numbers

Police, Fire & Ambulance: 111

Tourist information

Ōtepoti Dunedin isite Visitor Information Centre

50 The Octagon, Dunedin Central, New Zealand

+64 3 474 3300

visitorcentre@dcc.govt.nz

Open Mon-Fri 8:30am-5pm, Sat & Sun 9am-5pm

www.dunedin.govt.nz/dunedin-city/visitors-centre-isite