



Sydney

in collaboration with Destination NSW

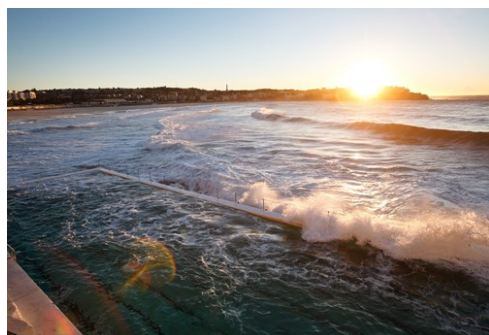
Photo: Ethan Rohloff; Destination NSW



Hamilton Lund; Destination NSW



Steve Back; Destination NSW



James Horan; Destination NSW

Sydney is Australia's most famous city, with the majestic Sydney Opera House, the impressive steel arch of the Sydney Harbour Bridge, the sparkling waterways and the white sands of Bondi Beach. Beneath this glittering surface, Sydney has many more enchanting layers to discover. This beautiful cosmopolitan city celebrates its cultural diversity and heritage, and passion for arts and sports. A temperate climate makes Sydney spectacular at any time of the year, and the city's friendly, casual attitude keeps visitors coming back Down Under for more!

Featured



Blue Mountains Day Trip fr...

Leave the hustle and bustle of Sydney behind to experience lush valleys, wat...



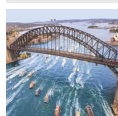
Manly Ferry

As a harbour city, Sydney has long relied on these grand old ladies - the Sy...



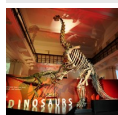
Kings Cross

An area rich in diversity, Kings Cross is a true melting pot of travellers, ...



Sydney Harbour Bridge

A Sydney icon, and known locally as The Coathanger, the impressive bridge ha...



Australian Museum

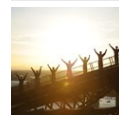
Established in 1827 and the first in the country, the Australian Museum has ...

Top 5



Sydney Opera House

Beautiful against the backdrop of the Sydney Harbour, the World Heritage-lis...



BridgeClimb

One of the most exciting ways to experience the Sydney Harbour Bridge is to ...



Sydney Harbour Cruise

The magnificent harbour is one of Sydney's greatest assets. For splendid vie...



SEA LIFE Sydney Aquarium

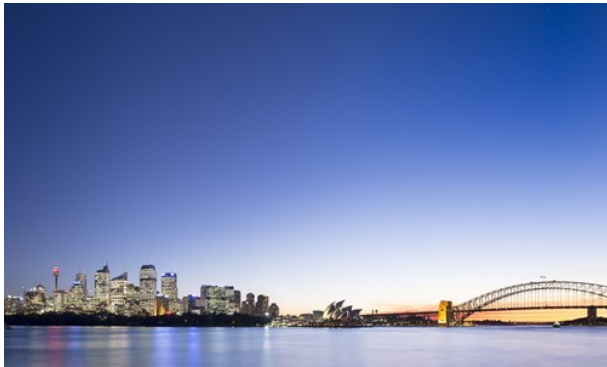
SEA LIFE Sydney Aquarium in Darling Harbour is one of the world's largest aq...



Taronga Zoo

Taronga Zoo is a delightful ferry ride across the harbour from Circular Quay...

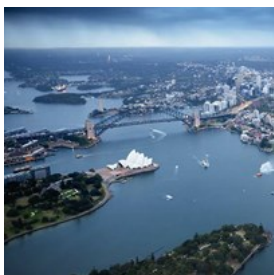
THE CITY



Steve Back; Destination NSW

Sydney is Australia's largest city, home to beautiful beaches such as world-famous Bondi Beach, iconic buildings, historic landmarks, acclaimed restaurants, and a vibrant culture. From the breathtaking views of Sydney Harbour to the tranquillity of the Royal Botanic Garden, the city is a delight for everyone. If you're looking for a holiday adventure, planning a honeymoon, or searching for a fun-filled getaway, Sydney is a great destination.

Sydney Harbour



Sydney Harbour is one of the most beautiful natural waterways in the world, with ferries, yachts and tall ships criss-crossing the sparkling blue waters.

Aboriginal people have a deep connection with the harbour, dating back at least 50,000 years. Take a ferry from Circular Quay to Manly or Watsons Bay. Cruises depart from the quay and Darling Harbour. You'll also enjoy stretching your legs on delightful walking trails around the harbour foreshore.

Photo: Hamilton Lund - Destination NSW

Internet: www.sydney.com/destinations/sydney/sydney-city/sydney-harbour

TOP THINGS TO DO



Steve Back; Destination NSW

Sydney is home to Australia's most iconic attractions, and incredible, unique experiences. Whether you wish to cruise in style on the blue waters of the harbour, scale the Sydney Harbour Bridge, relax on Bondi Beach, see a world-class performance in the World Heritage-listed Sydney Opera House, go whale watching or visit with koalas, it's all yours to enjoy in this splendid city.

Sydney Opera House



history.

Beautiful against the backdrop of the Sydney Harbour, the World Heritage-listed Sydney Opera House is a thriving hub of art, culture, and

As "one of the indisputable masterpieces of human creativity, not only in the 20th Century but in the history of humankind," according to a World Heritage report, it attracts millions of visitors from all over the world each year.

Experience all the Sydney Opera House has to offer by taking a guided tour, watching a show, and enjoying a cocktail at Opera Bar at sunset or delicious food in the acclaimed Bennelong Restaurant.

Photo: Sydney Opera House/Destination NSW

Address: Bennelong Point, Sydney

Public Transport: Ferry, bus or train to Circular Quay

Phone: +61 2 9250 7111

Internet: www.sydneyoperahouse.com

BridgeClimb



One of the most exciting ways to experience the Sydney Harbour Bridge is to climb to the top of it. Exhilarating and utterly unforgettable,

BridgeClimb gives you the opportunity to walk to the summit of the bridge and enjoy one of the world's most spectacular views, 134 metres (440ft) above the water.

Standing above Sydney Harbour — on the world's largest (but not longest) steel arch bridge — gives an incredible panoramic vantage point of the city, its harbour and waterways, and the dynamic lifestyle it affords locals and visitors alike.

Photo: BridgeClimb Sydney

Address: 3 Cumberland Street, The Rocks

Phone: +61 2 8274 7777

Internet: www.sydney.com/destinations/sydney/sydney-city/sydney-harbour/sydney-bridge-climb

Sydney Harbour Cruise



The magnificent harbour is one of Sydney's greatest assets. For splendid views, take a cruise and enjoy one of the world's most beautiful

natural harbours. There are dozens of cruises to choose from, starting with the famous Captain Cook lunch or dinner cruises. Public ferries depart from Circular Quay, or you can take a Tall Ship from The Rocks, a whale-watching cruise

from Darling Harbour, or sail aboard a catamaran from Rose Bay.

Photo: Captain Cook Cruises/Destination NSW

Address: Circular Quay, Darling Harbour, Rose Bay

Internet: www.sydney.com/destinations/sydney/sydney-city/sydney-harbour/cruises

SEA LIFE Sydney Aquarium



SEA LIFE Sydney Aquarium in Darling Harbour is one of the world's largest aquariums, with 650 species and 12,000

animals in six million litres of water. It has two of only five dugongs on display in the world. Go on a journey of amazing discovery through the Tropical Bay of Rays, Discovery Rockpool, Mangrove Swamps, South Coast Shipwreck, Dugong Island, Shark Walk and the stunning ocean tunnel walk through Shark Valley.

Photo: SEA LIFE Sydney Aquarium

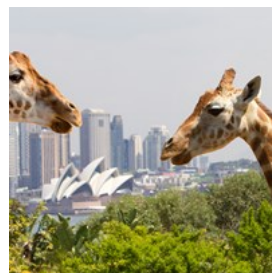
Address: Aquarium Wharf, Darling Harbour

Opening hours: Daily 10am-7pm

Phone: +61 1800 195 650

Internet: www.visitsealife.com/sydney

Taronga Zoo



Taronga Zoo is a delightful ferry ride across the harbour from Circular Quay. With spectacular harbour views, the award-winning

zoo is home to more than 4,000 animals.

Kangaroos, koalas, platypus, wombats, wallabies, emus and crocodiles live side by side with gorillas, tigers, snow leopards, bears, chimps, giraffes, zebras and elephants in this zoological garden. The zoo is a must-do for families and people of all ages. Don't miss the amazing bird

and seal shows.

Photo: Taronga Zoo/Destination NSW

Address: Bradleys Head Road, Mosman, NSW 2088

Public Transport: Ferry from Circular Quay to Taronga Zoo

Opening hours: Daily from 9:30am. Closing times vary during winter

Phone: +61 2 9969 2777

Internet: taronga.org.au/sydney-zoo

WILD LIFE Sydney Zoo



Experience an outback animal adventure right in the centre of the city. Walk through different Australian habitats and encounter some of the most loved, feared and unique native animals.

Meet the huge crocodile called Rex, say hello to kangaroos, wallabies and emus, encounter cuddly koalas, beautiful butterflies and more!

WILD LIFE Sydney Zoo features interactive displays, and daily keeper talks. You can even fly above Rex on the WILD Flight zip-line.

Photo: Merlin Entertainment Group

Address: Aquarium Wharf, Darling Harbour

Opening hours: Usually open daily 10am-5pm. Check the official website before your visit

Phone: +61 1800 195 650

Internet: www.wildlifesydney.com.au

Art Gallery of New South Wales



Established in 1871, the Art Gallery of NSW showcases fine Australian and international modern and contemporary works in expansive, light-filled

spaces. The Grand Courts are home to a collection of colonial Australian works and European old masters, while dedicated galleries celebrate Aboriginal and Torres Strait Islander

artwork and Asian collections. Regular guided tours are offered in Japanese, Mandarin, Cantonese and Korean.

Photo: Ken Leanfore/Destination NSW

Address: Art Gallery Road, The Domain, Sydney

Public Transport: Train to St James or Martin Place stations

Opening hours: Daily 10am-5pm. Extended opening hours on Wednesday: 10am-10pm

Phone: +61 2 9225 1700

Tickets: Entry to the Gallery is free, temporary exhibitions are ticketed.

Internet: www.artgallery.nsw.gov.au

Museum of Contemporary Art Australia



The MCA is on the edge of Sydney Harbour and is Australia's leading museum dedicated to contemporary art from across Australia and

around the world. In the historic Rocks, the MCA has a steady stream of exhibitions and events are hosted throughout the year. From established artists to new work by emerging artists in painting, sculpture, video, installation and more, there's something to inspire everyone at the MCA. And there are harbour vistas from the rooftop cafe.

Photo: Museum of Contemporary Art Australia

Address: 140 George Street, The Rocks

Public Transport: Ferry, train or bus to Circular Quay.

Opening hours: Fri 10am-9pm; Sat-Mon, Wed & Thu 10am-5pm; Tue closed

Phone: +61 2 9245 2400

Internet: www.mca.com.au

Sydney Tower Eye



Sydney Tower Eye takes you to the highest point above Sydney for breathtaking 360-degree views of the beautiful harbour city, from white sandy beaches and Pacific Ocean horizon to the World Heritage-listed Blue Mountains.

Photo: Sydney Tower Eye/Destination NSW

Address: Westfield Sydney Shopping Mall, 100 Market Street, Sydney

Opening hours: Daily 10am–7pm. Open until 8pm on some weekends

Internet: www.sydneytowereye.com.au

Sydney Harbour Tall Ships



Step back in time aboard an historic Tall Ship, in the tradition of those sailors who first sailed into Sydney Harbour back in 1788. These restored antique ships come complete with a crew of old salts — your hosts for the day. You are welcome to get involved and help hoist the sails, take a turn steering the ship or simply sit back and relax. For exhilaration and awe-inspiring views, you can scale a mast in the Mast Climb experience.

Photo: Sydney Harbour Tall Ships/Destination NSW

Address: Campbell's Cove Jetty, The Rocks

Public Transport: Start at Campbell's Cove, The Rocks, near the Circular Quay transport hub.

Phone: +61 2 8015 5571

Internet: sydneytallships.com.au

Luna Park



Enjoy all the fun of Luna Park, an amusement park on the edge of Sydney Harbour. It was originally built in the 1930s and rides include the fabulous Ferris Wheel, the Tango Train, the Giant Slide, the Space Shuttle and the Big Dipper rollercoaster. There are side shows — the Laughing Clowns, Crazy Crooners and Goin' Fishin' — complete with classic carnival prizes. Treat yourself with hot dogs, fairy floss and fish 'n chips. This iconic landmark is on the State Heritage Register, and has been a family favourite for generations of Australians.

Photo: Luna Park Sydney/Destination NSW

Address: 1 Olympic Drive, Milsons Point

Public Transport: Ferry from Circular Quay to Milsons Point

Opening hours: Opening times vary, check the website for information

Phone: +61 2 9922 6644

Internet: www.lunaparksydney.com

Sydney Fish Market



Sydney Fish Market at Pyrmont is one of the largest fish markets in the world. Business begins at 5:30am, when seafood buyers arrive to vie for the best of the day's catch — 2,700 crates of fresh seafood. Buy something for the barbecue, or enjoy lunch on the wharf overlooking the water. You can also reserve a behind the scenes tour to see all the action or join a seafood cookery class hosted by one of Australia's leading chefs.

Photo: James Horan/Destination NSW

Address: Bank Street, Pyrmont

Public Transport: Light rail to Fish Market

Opening hours: Daily 7am-4pm

Phone: +61 2 9004 1100

Internet: www.sydneyfishmarket.com.au

Madame Tussauds Sydney



Get up close and personal with over 75 of the world's most iconic celebrities and Australia's very own stars.

Celebrities on display include Lady Gaga, Leonardo Di Caprio, Justin Bieber, Kylie Minogue, Michael Hutchence, Jimmy Barnes, Mark Webber, Nicole Kidman, Brad Pitt and Angelina Jolie and many more, along with fascinating facts on every star. Walk along the red carpet and revel in the unique atmosphere of glamour, fame and history at Madame Tussauds Sydney and go on an interactive star-studded journey through the world of music, sport, culture, film and much more.

Photo: Madame Tussauds Sydney/Destination NSW

Address: Aquarium Wharf, Darling Harbour

Opening hours: Opening times vary, check the website for information

Phone: +61 1800 195 650

Internet: www.madametussauds.com/sydney

DO & SEE



Destination NSW

From enchanting national parks and tranquil gardens to fascinating museums and beautiful beaches, there's always something to explore and see in Sydney. You'll discover world-class attractions and delight in a ferry ride on Sydney Harbour. And many of the best sightseeing activities are free — all you need is a map, comfortable shoes, and your bus, train or ferry fare (you can get an Opal smartcard ticket to cover all three). Enjoy some of the Sydney locals' favourite places to go.

Blue Mountains Day Trip from Sydney



Leave the hustle and bustle of Sydney behind to experience lush valleys, waterfalls, gorges, mountains, and forests on a day trip to the majestic Blue Mountains.

Enjoy sweeping views of the Blue Mountains and sites, including the Three Sisters and Jamison Valley.

Hop onboard the Scenic Railway at Scenic World, enjoy a chef-prepared lunch, and visit Featherdale Wildlife Park to see kangaroos and other native Australian critters. Then, enjoy a relaxing, scenic cruise to Sydney Harbour along

the Parramatta River.

Photo: Nicholas Doherty/Unsplash

Phone: +61 414 514 949

Internet: andersonstours.com.au/all-inclusive-tours-sydneys-blue-mountains

Sydney Harbour Bridge



A Sydney icon, and known locally as The Coathanger, the impressive bridge has six million steel rivets and carries rail, bicycle, car,

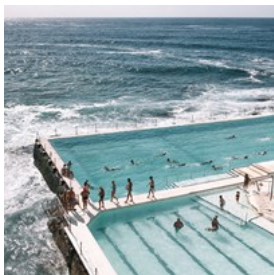
bus and pedestrian traffic across the harbour. It's 134 metres (440ft) from the water to top of the steel arch. The bridge is inspiring to look at, and even more exhilarating to walk across, as many Sydneysiders do, to get to and from work each day. Climb to the summit with BridgeClimb and be stunned by one of the world's most spectacular views.

Photo: Rodrigo Dawson - Destination NSW

Public Transport: Train, ferry or bus to Circular Quay

Internet: www.sydney.com/destinations/sydney/sydney-city/sydney-harbour/sydney-harbour-bridge

Big Bus Sydney & Bondi Hop-on Hop-off Tour



Discover Sydney's top attractions like the Sydney Harbour Bridge, Sydney Opera House, Darling Harbour, and the popular Bondi Beach on

the Big Bus sightseeing tour.

Enjoy unobstructed views of the Emerald City's highlights from the open-top, double-decker bus. Learn about Sydney's sights and history from the recorded onboard commentary. Go in-depth at any given place by simply hopping off the bus to explore at your own leisure.

Photo: Clarinta Subrata/Unsplash

Internet:

www.bigbustours.com/en/sydney/hop-on-hop-off-sydney

Explore The Rocks



Discover Sydney's convict history in the cobbled laneways near the Sydney Harbour Bridge. The Rocks is where Britain began its colony in 1788.

This is a picturesque destination, with a maze of sandstone courtyards, workman's cottages, elegant terraces and Sydney's oldest pubs. Discover vibrant weekend markets, theatres, cafés and bars, as well as several of the city's best hotels and restaurants - you'll love The Rocks.

Photo: James Horan - Destination NSW

Address: The Rocks, Sydney

Public Transport: Train, ferry or bus to Circular Quay

Internet:

www.sydney.com/destinations/sydney/sydney-city/the-rocks

Manly Ferry



As a harbour city, Sydney has long relied on these grand old ladies - the Sydney Ferries - to criss-cross the sparkling waterways. Take the

iconic Manly ferry across the harbour to Manly peninsular and stroll along the Corso to Manly Beach, where the first world surfing championship was held in 1964. Go for a surf, or rent a bike and ride to Fairy Bower and picnic at gorgeous Shelly Beach. Wine and dine at Manly Wharf before taking the ferry back to the city centre.

Photo: Keith McInnes - Destination NSW

Address: Wharf 3, Circular Quay

Public Transport: Departs from Wharf 3, Circular Quay
Internet: www.sydney.com/travel-information/transport

Royal Botanic Garden



The Royal Botanic Garden is an oasis of 30 hectares in the city. Wrapped around Farm Cove, from the Sydney Opera House to Woolloomooloo, the landscaped Garden is in one of Sydney's most spectacular positions and is home to an outstanding collection of plants from Australia and overseas. Wander through the garden, established in 1816, to Mrs Macquarie's Chair, which was carved out of a rock ledge for colonial Governor Macquarie's wife, Elizabeth. To this day, the views she so famously loved, are truly spectacular.

Photo: Royal Botanic Garden/Destination NSW
Address: Mrs Macquaries Road, Sydney
Public Transport: Train, bus or ferry to Circular Quay. Train to Martin Place.
Opening hours: Daily 7am-4:30pm
Phone: +61 2 9231 8111
Internet: www.rbgsyd.nsw.gov.au

Bondi to Coogee Coastal Walk



There's no better way to enjoy the beauty of the Sydney coastline than from the winding cliff walk between Bondi and Coogee beaches. These paths become a stage for whale watching between May and November, the backdrop for Sculpture by the Sea in October-November, and a year-round vantage point to watch surfers carve up the waves. Take in Aboriginal rock carving at Mark's Park, big surf at Tamarama, snorkelling at the coves of Clovelly and Gordons Bay, and the white sands of Coogee Beach. Stop

off at the Bronte café strip along the way and cool off with a refreshing dip in an ocean pool.

Photo: Bondi to Coogee Coastal Walk
Address: Marks Park, Tamarama
Public Transport: 333 bus to Bondi Beach, 315 to Coogee Beach
Internet: www.sydney.com/things-to-do/nature-and-parks/walks/bondi-to-coogee-coastal-walk

Darling Harbour



A lively entertainment precinct, Darling Harbour is a 10-minute walk from Town Hall in the city centre. One of Sydney's largest harbourside dining, shopping and entertainment precincts, Darling Harbour enjoys a full calendar of events as well as one of the city's most enchanting gardens - the Chinese Garden of Friendship. You'll also find a zoo, aquarium and a maritime museum. Cockle Bay and King Street Wharf offer funky nightclubs, wine bars and bistros serving fine food and great cocktails.

Photo: James Horan - Destination NSW
Phone: +61 2 9240 8500
Internet: www.darlingharbour.com

Chinese Garden of Friendship



Stepping into this fascinating garden in the middle of bustling Chinatown, is like stepping into a haven of tranquillity. The garden combines old world Chinese architectural principles, with an harmonious balance of running waterfalls, wooden bridges, towering willow trees and colourful koi and carp swimming in lagoons dotted with lotus. Visit the Courtyard of Welcoming Fragrance and the Twin

Pavilion, then take a jasmine tea in the traditional Chinese Teahouse.

Photo: Adam Craven

Address: 1 Exhibition Place, Darling Harbour

Opening hours: Daily 9:30am-5pm

Phone: + 61 2 9240 8888

Internet: www.darlingharbour.com/precincts/chinese-garden

Kings Cross



An area rich in diversity, Kings Cross is a true melting pot of travellers, stylish restaurants and inviting bars and cafés, and locals from many

walks of life. Bronze plaques honouring famous people and venues in the Cross are set in the pavement on Darlinghurst Road. Fitzroy Gardens contains the El Alamein memorial fountain, which flows like a giant dandelion. Theatres such as SBW Stables complement the nightclub acts. Look for the giant neon Coca Cola sign and people dressed to party, and you'll know you've arrived in the Cross.

Photo: Anna Kucera - Destination NSW

Address: Corner of William Street & Darlinghurst Road, Sydney

Public Transport: Train from Town Hall to Kings Cross station

Internet:

www.sydney.com/destinations/sydney/sydney-city/kings-cross

Hyde Park



Australia's oldest park is 16 hectares of beautiful gardens in the heart of the city centre. Replete with 580 exotic and native trees, art works,

monuments and water features, Hyde Park is a favourite lunch time spot, and hosts a number of

cultural events such as the Night Noodle Markets for Good Food Month each October. Divided by Park Street, the northern end contains the beautiful Archibald Fountain, with its bronze figures from ancient mythology, and a charming avenue of Hill's Fig trees. The southern end features an ANZAC War Memorial and Pool of Reflections.

Photo: Robert Billington - Destination NSW

Address: Elizabeth Street, Sydney

Public Transport: Trains to St James and Museum stations

Internet: www.sydney.com/destinations/sydney/sydney-city/city-centre/attractions/hyde-park

Australian Museum



Established in 1827 and the first in the country, the Australian Museum has an international reputation in natural history and in indigenous

studies, research, community programmes and accessible, innovative exhibitions. View unique and extensive science and cultural collections, multimedia exhibitions of physics and of indigenous Australian culture and native animals. The permanent Dinosaur exhibition features an awe-inspiring collection of skeletons and answers many age-old questions.

Photo: Stuart Humphries - Australian Museum

Address: 6 College Street, Sydney

Public Transport: Train to Museum station

Opening hours: Daily 9:30am-5pm

Phone: +61 2 9320 6000

Internet: australian.museum

Centennial Parklands



A short bus ride from the city centre, Centennial Parklands contain beautiful gardens, an entertainment quarter, 18-hole golf course,

sporting fields, tennis courts, equestrian facilities and Fox Studios, which makes films. About 15,000 trees grow in Centennial Parklands' three parks: Centennial Park, Queens Park and Moore Park. Enjoy a picnic under one of the trees or by a tranquil pond. In Centennial Park there's a cafe and a restaurant, and the EQ Village Markets are open on Wednesdays and Saturdays in Moore Park.

Photo: Centennial Parklands

Address: 15 Locked Bag, Paddington

Phone: +61 2 9339 6699

Internet: www.sydney.com/destinations/sydney/sydney-east/moore-park/attractions/centennial-parklands

Cockatoo Island



A short ferry ride from Circular Quay in the city centre is Sydney Harbour's largest island and one of Australia's most fascinating

historical sites that's on the World Heritage list. Take an audio tour or self-guided journey and explore the island's convict and ship-building history. Cockatoo Island is the only Sydney Harbour island where you can stay overnight in what Lonely Planet described as "one of the world's most spectacularly located campsites".

Photo: Cockatoo Island

Address: Cockatoo Island, Sydney Harbour

Public Transport: Ferry from Circular Quay to Cockatoo Island.

Phone: +61 2 8969 2100

Internet: www.sydney.com/destinations/sydney/sydney-city/sydney-harbour/attractions/cockatoo-island

Museum of Sydney



Built on the site of Australia's first Government House, a stroll from Circular Quay in the city centre, the Museum of Sydney is a

fascinating place to explore some of Sydney's dramatic history. The museum uses imaginative and interactive displays, like a miniature First Fleet, offering the visitor a journey back to the moment when the first European eyes set sight on what the First Fleet captain and first governor Arthur Phillip described as "the finest harbour in the world".

Photo: Doug Riley - Sydney Living Museums/Destination NSW

Address: Corner Phillip & Bridge Streets, Sydney

Public Transport: Ferry, bus train to Circular Quay

Opening hours: Daily 10am-5pm

Phone: +61 2 9251 5988

Internet: mhns.wa.visit-us/museum-of-sydney

BEACH LIFESTYLE



Hamilton Lund; Destination NSW

Sydney's beaches are world famous, and thanks to the mild climate, you can enjoy them year-round. Whether you want to ride waves on a surfboard or bodysurf at Bondi Beach, enjoy quiet time on a secluded stretch of sand, swim in

a tranquil ocean pool or harbour cove, or dine overlooking the vast Pacific Ocean, Sydney's picturesque harbour and gorgeous coastal beaches have it all.

Surf Beaches



Sydney is blessed with many surf beaches that cater to all levels of surfing skill, from small waves for beginners to big breaks for the more experienced and adventurous. Sydney beaches featured on the National Surfing Reserves, a list of iconic surfing locations in Australia, are Manly and North Narrabeen in Sydney's north and Maroubra and Cronulla in Sydney's south.

Photo: Mikala Wilbow - Let's Go Surfing Bondi Beach/Destination NSW

Internet: www.sydney.com/things-to-do/beach-lifestyle/sydney-surf-beaches

Surf Schools



Need a lesson? Beginners can find accredited surf schools at many of Sydney's favourite surf beaches, each school offering its own unique techniques for teaching you how to catch a wave. For an iconic Sydney surfing experience with experienced teachers who know the waves, head to Bondi or Manly beaches. You'll also find accredited surf schools at Maroubra and Cronulla beaches.

Photo: Manly surf guide/Destination NSW

Internet:

www.sydney.com/things-to-do/beach-lifestyle/surf-schools

Bondi Beach



White sands, turquoise waters and perfect waves make Bondi Beach one of the most popular destinations in the world, and you'll discover plenty more to do beyond the great surf and fine sands. Gourmet dining, eclectic shopping markets, gorgeous coastal walks and a buzzing nightlife can all be experienced in Bondi. The promenade along the beachfront is a favourite track for joggers and walkers, and you'll find plenty of inviting cafés and wine bars on Campbell Parade and in Hall Street.

Photo: Hamilton Lund - Destination NSW

Internet:

www.sydney.com/destinations/sydney/sydney-east/bondi

Manly Beach



Manly is a delightful destination for the whole family. Near the wharf where the ferry arrives, there is sheltered swimming in the netted harbour pool at Manly Cove, plus Manly SEA LIFE Sanctuary, cafés, restaurants and ice-cream shops. The paved Corso leads you past surf shops and pubs to Manly Beach. Walk or cycle along the Norfolk Pine tree-lined Steyne promenade from the white sands and rolling surf of Manly Beach to the neighbouring haven of Freshwater Beach.

Photo: Andrew Gregory - Destination NSW

Public Transport: Ferry from Circular Quay to Manly Wharf

Internet:

www.sydney.com/destinations/sydney/sydney-north/manly

Coogee Beach



With a shimmering bay, magnificent coastal walk and a protected Marine Reserve that attracts snorkellers and scuba divers, Coogee epitomises

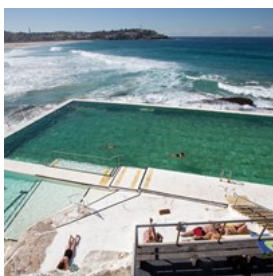
the classic Sydney beach scene. When you're not lying on the sand or frolicking in the waves, explore the parks and ocean pools. Grab an icecream, a coffee or look out for great clothing bargains as you wander up Coogee Bay Road. For cool drink, visit one of the beer gardens, or check out the latest movies in the Art Deco grandeur of the heritage-listed Ritz Cinema at The Spot in Randwick.

Photo: Kajo Merkert-Ohlheiser - Destination NSW

Internet:

www.sydney.com/destinations/sydney/sydney-east/coogee

Ocean & Harbour Pools



Sydney's coastline features a number of delightful outdoor pools, carved into rock platforms. These saltwater pools are a

perfect complement to the surf — ideal for lap swimmers, families or those who just want to relax and float. You'll find many of the ocean pools tucked into the corners of Sydney's surf beaches or down a cliffside, such as the women's baths at Coogee. In Sydney Harbour, outdoor pools include the Andrew Boy Charlton pool at Woolloomooloo, near the Art Gallery of NSW, Royal Botanic Garden and Mrs Macquarie's Chair.

Photo: James Horan/Destination NSW

Internet:

www.sydney.com/things-to-do/beach-lifestyle/outdoor-pools

Palm Beach



Palm Beach is Sydney's northernmost stretch of sand, featuring great surf and coastal walks. It's famous as the gorgeous setting in the

long-running TV soap Home and Away, which has a huge international following. Known to locals as Palmie, the northern end of the beach is good for surfing and the southern end offers protected swimming, including a 35-metre ocean pool. Enjoy spectacular views of Palm Beach and Pittwater from the historic Barrenjoey Lighthouse, or fish from Palm Beach Wharf.

Photo: Isaac Brown - Destination NSW

Internet: www.sydney.com/destinations/sydney/sydney-north/palm-beach

Manly Scenic Walkway



A great way to marvel at the beauty of Sydney Harbour and the enchanting bushland on the foreshore is on foot, and one of the best

walking trails is the Manly Scenic Walkway. This 10 km path meanders through the bush around the harbour foreshore from Spit Bridge past gorgeous Clontarf Beach to Manly. Stop at the crest of Dobroyd Head and look straight out to sea through the Heads, the entrance of the harbour. There are six entry and exit points for shorter strolls, and the whole walk takes 3-4 hours. Enjoy a post-walk feast at Manly Wharf before taking the iconic Manly ferry across the harbour to Circular Quay.

Photo: Manly scenic walkway

Address: Starts at the Spit Bridge, near Mosman

Public Transport: Bus from Wynyard station, Carrington

Street, in the city centre to Spit Bridge.

Opening hours: Always open

Phone: +61 2 9976 1430

Internet: www.sydney.com/destinations/sydney/sydney-north/manly/attractions/manly-scenic-walkway

Secret Spots



Quiet, secluded beaches sprinkled around Sydney Harbour and along the coast, are charming spots to relax and unwind. Pack a picnic and head off to

discover your own secret beach hideaway, many of which are accessible by ferry. The picturesque Milk Beach is a small stretch of white sand hidden within Sydney Harbour National Park, near Vaucluse, in Sydney's east. In Sydney's north, relax on Shelley Beach, near Manly, and Chinaman's Beach, near Mosman. In Sydney's south, the Royal National Park is home to Jibbon Beach.

Photo: Andrew Gregory - Destination NSW

Internet: www.sydney.com/things-to-do/beach-lifestyle/secret-beaches-in-sydney

Watsons Bay



Australia's oldest fishing village is Watsons Bay in Sydney Harbour, and home to the famous seafood restaurant Doyles on the Beach. Take a

ferry from Circular Quay to Watsons Bay Wharf, or take in spectacular views aboard a bus on the cliff-hugging drive down to Watsons Bay. Enjoy fish and chips at the wharf along with splendid harbour views. You can walk to the lighthouse at South Head and swim in the harbour pools. There's also a pub, Watsons Bay Beach Club, with great vistas, drinks and food - and jazz

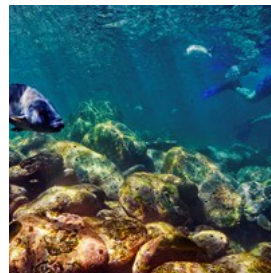
every Sunday. The sunsets from Watsons Bay are glorious.

Photo: Andrew Gregory - Destination NSW

Public Transport: Ferry from Circular Quay or bus from the QVB, York Street.

Internet: www.sydney.com/destinations/sydney/sydney-east/watsonsbay

Snorkelling in Sydney



With a snorkel, mask and flippers, you can explore a huge range of marine life from starfish and sea anemones to spotted goatfish and cuttlefish,

coral and more, at Sydney's many sheltered seaside coves. Clovelly Beach is a natural rock pool, and one of Sydney's best snorkelling spots - keep an eye out for the famous blue groper. Nearby, Gordons Bay is protected by a reef and is an ideal site for beginners and families. Great snorkelling can also be enjoyed around Coogee's rock pool at the northern end of the beach.

Photo: Lawrence Furzey - Destination NSW

Internet: www.sydney.com/things-to-do/beach-lifestyle/snorkelling-in-sydney

DINING



Destination NSW

Sydney's enviable reputation as a world-class dining destination is built on talented chefs using the freshest local produce and seafood caught daily in the Pacific Ocean. You might hear the term Mod Oz, which is short for Modern Australia — a fresh fusion of Asian and European culinary styles adored by locals and visitors alike. Welcome to foodie heaven! Each year The Sydney Morning Herald Good Food Guide reviews restaurants and awards one, two or three chef's hats to the best — it's similar to Michelin stars.

Infinity at Sydney Tower



360 Bar and Dining is the revolving restaurant high above the city in Sydney Tower, with gorgeous 360-degree views of Sydney and beyond. The sophisticated restaurant has a menu consisting of Modern Australian cuisine, and is the perfect spot for a romantic date.

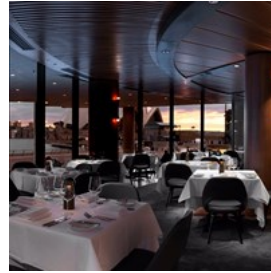
Photo: Infinity at Sydney Tower_Credit Robert Walsh Photography

Address: Westfield Sydney, Level 4, 100 Market Street, Sydney

Phone: +61 2 8223 3883

Internet: www.infinitysydneytower.com.au

ARIA Sydney



Owned by chef Matt Moran and renowned restaurateur Peter Sullivan, ARIA is a prestigious chef's hatted restaurant on the edge of Sydney Harbour at Circular Quay. ARIA offers an unparalleled dining experience with striking views, an award-winning menu and extensive wine list, served in an elegant dining room.

Photo: Aria Sydney

Address: 1 Macquarie Street, East Circular Quay, Sydney

Public Transport: Ferry, train or bus to Circular Quay

Phone: +61 2 9240 2255

Internet: www.ariasydney.com.au

Café Sydney



On the roof of the 19th century Customs House, this restaurant captures the very essence of Sydney dining with spectacular harbour views, an outdoor terrace for fine days and delightful nights, a cocktail lounge, and a relaxed modern interior. The menu features contemporary classics using fresh seasonal produce, with seafood a speciality.

Photo: Cafe Sydney

Address: 5th Floor, Customs House, 31 Alfred Street, Sydney

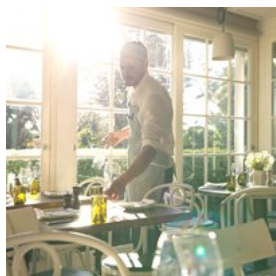
Public Transport: Ferry, train or bus to Circular Quay

Phone: +61 2 9251 8683

Internet: cafesydneym.com

Email: reservations@cafesydneym.com

Chiswick Woollahra



Located in the beautiful neighbourhood of Woollahra in Sydney's east, Chiswick is a superb casual dining venue co-owned by Matt Moran

and Peter Sullivan. With charming floor-to-ceiling French windows, and an open kitchen where chefs prepare dishes to share made from fresh produce straight from the kitchen garden outside — this restaurant is a delight.

Photo: Jason Loucas – Solotel/Destination NSW

Address: 65 Ocean Street, Woollahra

Public Transport: Train from Town Hall to Edgecliff station

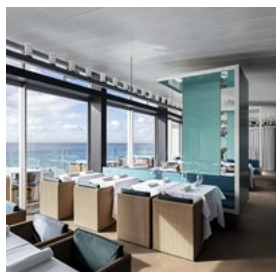
Opening hours: Lunch: daily noon–2:45pm. Dinner: Mon–Sat 5:30pm–8:45pm, Sun 5:30pm–6:30pm

Phone: +61 2 8388 8688

Internet: www.chiswickwoollahra.com.au

Email: info@chiswickrestaurant.com.au

Icebergs Dining Room & Bar Bondi



Named after Sydney's iconic swimming club — Bondi Icebergs — that swims in the ocean pool at Bondi Beach, Icebergs Dining Room and Bar is consistently awarded chef's hats. Since opening in 2002, the restaurant's spectacular views, superb cuisine and atmosphere of relaxed elegance have delighted visitors from all over the world. Under the direction of head chef Paul Wilson, the menu focuses on seafood dishes with an Italian flavour.

Photo: Icebergs Dining Room and Bar

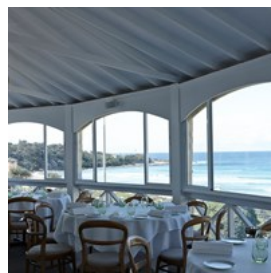
Address: Level 3/1 Notts Avenue, Bondi Beach

Public Transport: Bus 333 from Circular Quay

Phone: +61 2 9365 9000

Internet: idrb.com

Pilu at Freshwater



With beautiful Freshwater Beach as a backdrop, enjoy delicious Italian cuisine at this award-winning restaurant in Freshwater, just north

of Manly. You'll enjoy spectacular seaside views through big bay windows in an elegant yet relaxed setting. It was awarded two hats in the 2016 Good Food Guide.

Photo: Pilu at Freshwater

Address: Moore Road, Freshwater

Phone: +61 2 9938 3331

Internet: pilu.com.au

Monopole Restaurant & Bar



Brent Savage and Nick Hildebrandt, of the renowned Bentley in the city, launched Monopole Restaurant and Bar in the heart of Sydney's elegant

Potts Point in 2012. Even over a decade later and after a decisive move to Sydney CBD, Monopole never fails to impress with innovative, seasonal dishes and a celebrated wine list. To spice things up, they've introduced a biweekly-changing set menu for Saturday nights. Expect delights like spanner crab with corn custard, Flinders Island scallop with finger lime, and Yellow's famed liquorice bread. Don your best attire and confirm it for yourself.

Photo: Monopole Restaurant and Bar/Destination NSW

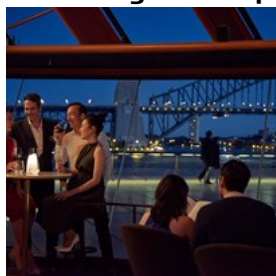
Address: 16/20 Curtin Place, Sydney

Phone: +61 2 8080 9144

Internet: www.bentleyrestaurantgroup.com.au/monopole

Email: info@monopolesydney.com.au

Bennelong at the Opera House



Under the iconic 'white sails' of the Sydney Opera House, Bennelong showcases Australian produce and wine in a majestic setting. One of

the world's top chefs, Peter Gilmore, is at the helm of Bennelong. Awarded two hats in the 2016 Good Food Guide, Bennelong offers several dining options.

Photo: Tobias Rowles - Destination NSW

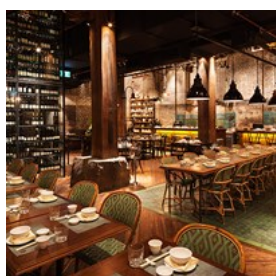
Address: Sydney Opera House, Bennelong Point

Public Transport: Train or ferry to Circular Quay

Phone: +61 2 9240 8000

Internet: www.bennelong.com.au

Mr Wong



This grand 240-seater is a love letter to the great Cantonese restaurants of Hong Kong. Timeless colonial furnishings — timber floors, bamboo

French chairs and slow turning fans — and the Cantonese-influenced contemporary Chinese menu of over 60 dishes, have won Mr Wong multiple restaurant awards including two chef's hats.

Photo: Mr Wong/Destination NSW

Address: 3 Bridge Lane, Sydney

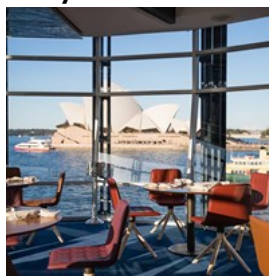
Opening hours: Mon-Thu & Sun noon-3pm / 5:30pm-10pm;

Fri & Sat noon-3pm / 5:30pm-11pm

Phone: +61 2 9114 7317

Internet: merivale.com/venues/mrwong

Quay



Named among the top 50 Restaurants in the World, this multi-hatted award winner is almost suspended over Sydney Harbour, with

floor-to-ceiling windows allowing for breathtaking views. The food is as splendid as the outlook: creativity and quality, textural variety and complexity as well as beautiful plating are all features of chef Peter Gilmore's gastronomical dishes, in which he utilises rare local ingredients. Dining at Quay makes for a truly special occasion.

Photo: Nikki To – Fink Group/Destination NSW

Address: Upper Level, Overseas Passenger Terminal, The Rocks

Public Transport: Ferry, train or bus to Circular Quay

Opening hours: Lunch: Sat & Sun noon-1:30pm. Dinner

Thu-Sun 6pm-8:45pm

Phone: +61 2 9251 5600

Internet: www.quay.com.au

Email: reservations@quay.com.au

Spice Temple



Out of the Neil Perry (Rockpool) stable, Spice Temple offers regional Chinese cuisine. Think Sichuan, Yunnan, Hunan, Jiangxi, Guangxi and

Xinxiang. There's a whole lot of chilli for those who like it hot, subtlety for those wanting something milder and plenty of spice to boot. The atmosphere is elegant, underground and seductive, with acute attention to design.

Photo: Spice Temple

Address: 10 Bligh Street, Sydney

Public Transport: Train to Martin Place or Wynyard stations

Phone: +61 2 8078 1888

Internet: spicetemple.com.au

Email: info@spicetemple.com

Sydney Fish Market



Sydney Fish Market's six main fish retailers offer Australia's biggest variety of fresh seafood and over 100 species of fish as well as crabs, lobsters, oysters and other succulent seafood. One of the biggest seafood markets in the world, the site also features numerous restaurants, including Peter's Seafood Grill and Doyles, as well as cafés, a bakery, gourmet deli, greengrocer, bottle shop, fishing supplies store, butcher and gift shop. The daily fish auction starts at 5.30 am in the morning.

Photo: Sydney Fish Market

Address: Bank Street, Pyrmont

Public Transport: Light rail from Central Station to Fish Market stop

Opening hours: Daily 7am-4pm

Phone: +61 2 9004 1100

Internet: www.sydneyfishmarket.com.au

Tetsuya's



Ranked among the world's top restaurants, Tetsuya's has held chef's hats in the Good Food Guide for more than 20 years. The heritage-listed Kent Street restaurant is a temple of restrained chic and refined French-Japanese culinary masterpieces with a degustation menu that constantly evolves in the acclaimed chef Tetsuya Wakada's kitchen. This is a truly impressive dining experience.

Photo: Tetsuya's

Address: 529 Kent Street, Sydney

Public Transport: Train to Town Hall station

Phone: +61 2 9267 2900

Internet: www.tetsuyas.com

Email: info@tetsuyas.com

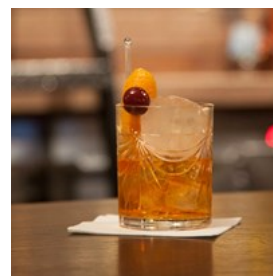
BARS, PUBS & NIGHTLIFE



James Pipino; Destination NSW

You'll discover plenty of stylish bars, hip venues and cool clubs in Sydney. Near the sparkling waters of Sydney Harbour are bars and pubs with spectacular views of the city's iconic attractions. Enjoy beachside bars with outdoor seating. After sightseeing, you'll appreciate the relaxed, friendly atmosphere of Sydney's eclectic bars and pubs.

Baxter Inn



Head underground to the candle-lit basement of the Baxter Inn. 360 premium whiskies line the cabinets of this speakeasy-themed drinking den. With thick carpet, jazz and blues, beer on tap, a wine and port cellar, and a whisky for every day of the year - Baxter Inn is more than inviting. To top off the great service, you also get bartenders dinging an old boxing bell and tooting a trumpet at shot time.

Photo: The Baxter Inn

Address: Basement, 152-156 Clarence Street, Sydney

Public Transport: Train to Town Hall station

Opening hours: Daily 4pm-3am

Internet: swillhouse.com/venues/the-baxter-inn

Pumphouse Sydney



Inspired by its history as one of Sydney's first microbreweries, located right in the heart of Darling Harbour, the Pumphouse Sydney

consistently stocks an evolving and diverse beer selection tailored to quench the thirst of beer lovers and novices alike. The heritage listed bar offers a range of over 60 different craft and premium brews alongside specialty beers unique to the Pumphouse Sydney, including their very own renowned signature, the Thunderbolt Strong Ale.

To complete your experience at The Pumphouse, executive chef Jason Palmero and his team has created a new range of food, suited to accompany any of your drinks preference. The concept of the new menu has been inspired by the Pumphouse's rich history, fusing good Australian pub grub with American influence to keep you satisfied.

Pumphouse Sydney features an outdoor terrace, one of Australia's longest steel bars, and relaxed ottoman style seating area.

Photo: Pumphouse bar/Destination NSW

Address: Novotel Sydney Darling Square, 17 Little Pier Street, Darling Harbour

Opening hours: Daily from noon

Phone: +61 2 8217 4000

Internet: pumphouse-sydney.com.au

Hemmesphere



On the fourth floor of the Establishment Precinct is a world of opulence, inspired by the sophistication of the Ottoman Empire.

Hemmesphere, derived from the surname of founder Justin Hemmes, features exotic furnishings, low lounges and ambient lighting, which create an intimate atmosphere for any evening out. Fancy cocktails are available in abundance, vintage drams and select wines add to the mix, as does a compact menu of Japanese bento boxes, platters, and supper snacks.

Photo: Hemmesphere

Address: 4/252 George Street, Sydney

Public Transport: Train to Wynyard station

Phone: + 61 2 9114 7313

Internet: merivale.com/venues/hemmesphere

Hugos Manly



On the Manly Wharf, Hugos Manly is one of Sydney's waterfront restaurants with spectacular views of Sydney Harbour. A

delicious mix of pizza and pasta, the menu was created by celebrity chef Pete Evans. You'll also be impressed by the skills of the award-winning bar team. Take a ferry from Circular Quay across the sparkling harbour and soak up the lovely atmosphere of Hugos Manly.

Photo: Andrew Gregory - Destination NSW

Address: Manly Wharf, 1 E Esplanade, Manly

Public Transport: Ferry from Circular Quay to Manly Wharf

Phone: +61 2 8116 8555

Internet: www.hugos.com.au

Email: reservations@hugos.com.au

Ivy



Ivy is an entertainment palace in the city centre. From cocktail bars and dancing to bistros and a rooftop pool bar, ivy is a Sydney party destination.

Enter via Angel Place laneway and head to French bar and bistro Felix for a dry Martini, or to Ash Street Cellar for tapas. Palings, on level one, delivers Mod Oz cuisine. Up the elevator you'll discover a sparkling rooftop pool at the Ivy Pool Club. Friday hip-hop nights and Pacha Saturdays offer dance party heaven.

Photo: Ivy Bar/Destination NSW

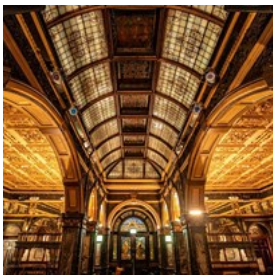
Address: 330 George Street, Sydney

Opening hours: Mon-Fri 7:30am-late, Sat & Sun noon-late

Phone: +61 2 9240 3000

Internet: merivale.com/venues/ivy

Marble Bar



Built in 1893 and preserved in all its opulent glory, the Marble Bar is a delightful Victorian-era bar underneath the Hilton

Hotel in the city centre. A hundred tonnes of the best marble in the world were used to build the bar, creating a splendid ambience. The Marble Bar is a great place to enjoy fine Australian wines and beers and classic cocktails and Australian beer. Enjoy live music on Thursday, Friday and Saturday.

Photo: Hilton Sydney/Destination NSW

Address: Level B1, Hilton Sydney, 488 George Street, Sydney

Public Transport: Train to Town Hall station

Opening hours: Mon-Wed 5pm-midnight, Thu-Sat 5pm-1am, Sun closed

Phone: +61 2 9266 2000

Internet: www.marblebarsydney.com.au

O Bar & Dining



A stylish escape 47 floors up in the sky, O Bar and Dining's vast circular layout provides 360-degree views of beautiful Sydney and

beyond. Located at Australia Square, a landmark building near The Rocks, the ambient light, plush couches and deep leather chairs ensure a night at O Bar is an enchanting experience. There's tapas for sharing, and the delightful cocktail list is based on fragrance and seasonality. On the revolving lower level, guests can recline while dining on a Modern Australian menu and enjoying spectacular views.

Photo: Anliette Chen - O Bar and Dining/Destination NSW

Address: Level 47, Australia Square, 264 George Street, Sydney

Public Transport: Train to Wynyard station

Opening hours: Dinner: daily from 5pm. Lunch: Thu-Sat from noon

Phone: +61 2 9247 9777

Internet: www.obardining.com.au

Email: reservations@obardining.com.au

Opera Bar



Opera Bar has spectacular views of Sydney Harbour and the Sydney Harbour Bridge from the lower concourse of the World

Heritage-listed Sydney Opera House. You'll enjoy delicious food prepared by talented chefs at this world-class destination for dining and drinking. Enjoy drinks and dinner before a performance at the Sydney Opera House. In a truly splendid setting, Opera Bar is great fun, with a buzzing atmosphere, any time. And the sunsets are glorious.

Photo: Opera Bar

Address: Lower Concourse Level, Sydney Opera House,
Sydney

Public Transport: Train, ferry or bus to Circular Quay

Phone: +61 2 9247 1666

Internet: www.operabar.com.au

Palmer & Co



Hidden up a laneway with a secret entrance, this swanky underground cocktail bar - beneath the Establishment - has an American-inspired bar

menu, with dishes like pastrami on rye and macaroni and cheese, and an incredible list of drinks and cocktails such as the power-packed Prohibition. Bartenders are dressed to the nines in Great Gatsby style, to capture the spirit of the Roaring Twenties. Settle into a lounge, take in the live music and enjoy the warm glow.

Photo: Palmer and Co

Address: Abercrombie Lane, Sydney

Public Transport: Train, ferry or bus to Circular Quay. Train to Wynyard station.

Phone: + 61 2 9114 7315

Internet: merivale.com/venues/palmerandco

The Glenmore Hotel



This three-storey heritage hotel in The Rocks has a rooftop bar with 180-degree views of Sydney Harbour and the city centre. On the middle

floor is the lounge cocktail bar, with Juliette balconies and an elegant ambience for gatherings of friends or family. The ground floor has traditional pub vibe. A great place to meet for lunch or after-work drinks.

Photo: The Glenmore Hotel

Address: 96 Cumberland Street, The Rocks

Public Transport: Train, ferry or bus to Circular Quay

Phone: +61 2 9247 4794

Internet: theglenmore.com.au

The Lord Nelson



Sydney's first boutique brewery and the oldest in Australia, the Lord Nelson is famous for its award-winning 100% natural ales.

Fermentation occurs at the brewery at the rear of the bar, and the beer is matured in the cellar, then perfectly conditioned before heading straight to the taps on the bar, and into your schooner or pint glass. The pub itself has been restored to its former 1852 glory, revealing a beautiful sandstone facade plus high ceilings, blazing hearths and convict history.

Photo: Lord Nelson Brewery

Address: 19 Kent Street, The Rocks

Public Transport: Train, ferry or bus to Circular Quay

Phone: +61 2 9251 4044

Internet: www.lordnelsonbrewery.com

The Wine Library



This small, sophisticated bar is stocked with a veritable library of wines. You can choose from more than 500 wines, with a great selection of

Australian and international wines. You'll appreciate the casual, cosy seating nestled around the warmly lit bar. Afternoon snacks and pre-dinner drinks are available at the bar, and there is also a separate dining area and a secluded, intimate outdoor oasis.

Photo: The Wine Library

Address: 18 Oxford Street, Woollahra

Public Transport: Bus 333 from Circular Quay

Opening hours: Tue–Thu 5pm–late, Fri & Sat 12:30pm–late,
Sun & Mon closed
Phone: +61 2 9360 5686
Internet: www.wine-library.com.au

Zeta Bar



Stylish, sleek and sophisticated, this glamorous bar at the Hilton Sydney has an outdoor terrace overlooking the grand Queen Victoria Building, which was completed in 1898 and beautifully restored in the 1980s. Zeta's experienced mixologists come from all over the world and consistently drive Sydney's cocktail culture forward with fresh, innovative cocktail concepts that push the boundaries.

Photo: Zeta Bar
Address: Level 4/488 George Street, Sydney
Public Transport: Train to Town Hall station
Phone: +61 2 9265 6070
Internet: www.zetabar.com.au

SHOPPING

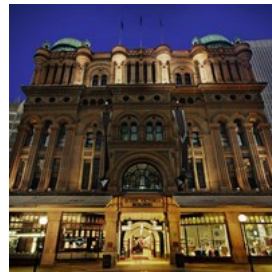


Westfield Sydney/Destination NSW

Sydney is a shopper's paradise, with all your favourite international brands and labels plus trendy boutiques and buzzy weekend markets. And Sydney designers wow the fashion world with their creations; browse in boutiques and markets for innovative local designs. Stock up on boots, party frocks or unique pieces of jewellery

including opals, natural pearls and pink diamonds in stylish shopping malls and boutiques.

Queen Victoria Building



Rich in history, the grand Queen Victoria Building occupies an entire block on Sydney's George Street, and houses more than 180 of Sydney's finest fashion boutiques, jewellery shops and homewares, accompanied by delightful cafés and restaurants. You can enjoy morning or afternoon tea at the Tea Room.

Photo: Queen Victoria Building/Destination NSW
Address: 455 George Street, Sydney
Public Transport: Train to Town Hall station
Phone: +61 2 9265 6855
Internet: www.qvb.com.au

Pitt Street Mall



Pitt Street Mall is Sydney's fashion central in the heart of the city, encompassing several retail centres across two city blocks including stylish Westfield Sydney, department stores David Jones and Myer and the elegant Strand Arcade. You'll discover all the top international brands and labels as well as top local designers in the many boutiques and stores in this delightful shopping precinct.

Photo: Tony Yeates - Destination NSW
Address: Pitt Street, Sydney
Public Transport: Train to Town Hall or Martin Place stations.
Internet: www.sydney.com/destinations/sydney/sydney-city/city-centre/attractions/pitt-street-mall

Strand Arcade



The Strand Arcade houses many of Australia's best designer labels, jewellers, coffee shops, gift shops and beauty salons. The majestic Victorian building sits in the middle of Sydney city on bustling Pitt Street Mall, housing many retail outlets that have traded there for decades. Established in 1891 and opened in 1892, the Strand Arcade was the last of the arcades built in Victorian Sydney and is the only one remaining today in its original form.

Photo: Brent Winstone - Strand Arcade/Destination NSW
Address: 412-414 George Street, Sydney
Public Transport: Train to Town Hall or Martin Place stations.
Phone: + 61 2 9232 4199
Internet: www.strandarcade.com.au

Westfield Sydney



Shopping and dining in Australia begins at Westfield Sydney, with over 250 fashion, food and lifestyle stores, located in the centre of Sydney city.

Offering a mix of top Australian designers and international high street fashion across four levels, with a further three levels of dining, Westfield Sydney is the ultimate shopping and dining destination.

To welcome visitors to Sydney, Westfield have created the Westfield Sydney Privilege Card offering visitors to Sydney exclusive discounts, special offers and access to their onsite Concierge Team.

The Westfield Sydney Privilege Card is available to out-of-town guests who present their driver's license or passport at the Concierge Desk located at street level on both sides of Pitt Street Mall.

Westfield's friendly concierge staff will give you a list of special offers and a centre directory for your convenience, then all you need to do is start shopping!

Photo: Westfield Sydney/Destination NSW
Address: 188 Pitt Street, Sydney
Phone: +61 2 8236 9200
Internet: www.westfield.com.au/sydney

Westfield Bondi Junction



Along with Westfield Sydney in Pitt Street Mall, Westfield Bondi Junction caters for shoppers interested in designer labels, including Louis Vuitton and Chanel, among other prized international and Australian brands. Explore hundreds of specialty stores and services including Australia's largest department stores, David Jones and Myer, as well as a food court, supermarkets, fishmonger and butcher.

Photo: Westfield Bondi Junction/Destination NSW
Address: 500 Oxford Street, Bondi Junction
Phone: +61 2 9947 8000
Internet: www.westfield.com.au/bondijunction

MidCity Centre



Like a personal stylist, MidCity Style Space provides all the tools for you to put together the perfect look. Take a walk through its four levels, including bold looks for men and women, fitness solutions to get that body into shape, and boutique dining. It is small enough to be effortless and big enough to be rewarding.

Photo: MidCity Centre/Destination NSW
Address: 197 Pitt Street Mall, Sydney
Internet: midcityshopping.com.au

The Galleries Victoria



A diverse mix of boutiques and retailers offering fashion, art and music. Give your wardrobe a serious upgrade in a matter of hours, shopping at Incu, Alphaville or Carhartt. Grab a bite to eat at the food hall and a beer at The Arthouse. Browse the latest music and technological gadgets at JB Hi-Fi and discover an extensive range of books at Kinokuniya.

Photo: Destination NSW
Address: 500 George Street, Sydney
Public Transport: Train to Town Hall station
Phone: +61 2 9265 6888
Internet: www.thegalleries.com

World Square



Spanning three levels of an entire block in Haymarket, near Chinatown, World Square shopping centre offers fresh and prepared food, a tempting selection of fashion, homewares,

lifestyle items and services, with over 90 specialty retailers.

Photo: World Square Shopping
Address: 644/680 George Street, Sydney
Public Transport: Train to Town Hall station
Internet: www.worldsquare.com.au

The Rocks Markets



It's said that only good things happen on Fridays and from 9am - 3pm at The Rocks Foodies Market it's all about good things you can eat and enjoy in the lovely Jack Munday Place. While you're at it, pick up fresh fruit, crusty bread, irresistible chocolate, olive oils, condiments and homewares as buskers coax laid-back tunes from guitars and banjos. Wander down for gourmet wraps and burgers, barbecued salmon, lamb kebabs, Turkish gozleme and a whole range of Australian-made gourmet produce.

The Rocks Markets is about more than just shopping — it's a Sydney institution. Set amid convict-carved sandstone and along The Rocks' quaint cobblestone laneways, the colourful markets are home to more than 200 eclectic stalls where you can find fashion and accessories by emerging designers, locally-produced homewares, beauty products and original photography, art, crafts and jewellery.

Photo: Sydney Harbour Foreshore Authority/Destination NSW
Address: Playfair & George Street, The Rocks
Phone: +61 2 9240 8717
Internet: www.therocks.com/whats-on/market-overview

Glebe Markets



Browse through the many and varied stalls featuring a treasure of goods, from original design clothing to pre-loved attire, books, records, jewellery, accessories, art and bric-à-brac. Enjoy multicultural food stalls and outdoor entertainment including bands, jugglers and acrobats.

Photo: Glebe Markets/Destination NSW

Address: Glebe Public School, 183 Glebe Point Road, Glebe

Public Transport: Train to Central Station and walk or bus

431, 432 from Central Station's Pitt Street stop

Opening hours: Every Sat 10am-4pm

Internet: www.glebemarkets.com.au

Bondi Markets



The Bondi Markets, established in 1993, are open Sundays in the beachfront grounds of Bondi Beach Public School. Discover original local designer clothing and imported fashions, handmade jewellery, arts, crafts, homewares, retro furniture, vintage clothes and more. After browsing in the markets, stroll to the world-famous Bondi Beach and enjoy the white sands and curling waves.

Photo: Bondi Markets/Destination NSW

Address: Bondi Beach Public School, Campbell Parade, Bondi Beach

Public Transport: Bus 333 from Circular Quay

Opening hours: Every Sun 10am-4pm (until 5pm in December & January)

Internet: bondimarkets.com.au

Paddington Markets



Every Saturday, local fashion designers, craftspeople, jewellery makers and artists fill more than 150 stalls with creative fashion,

accessories, handcrafted goods and pictures that keep inspiring new generations of Sydneysiders, year in and year out. In the heart of Paddington, the markets have been operating since 1973.

Photo: Paddington Markets/Destination NSW

Address: Paddington Uniting Church, 395 Oxford Street, Paddington

Public Transport: Bus 333 or 380 from Circular Quay

Opening hours: Every Sat 10am-4pm (until 5pm in the summer)

Phone: +61 2 9331 2923

Internet: www.paddingtonmarkets.com.au/contact-us

Paddy's Markets



Paddy's Markets has held a central place in Sydney's history for over 150 years. In the Chinatown area, explore hundreds of stalls stocked

with a wide range of goods, from souvenirs to sporting goods, clothes to cosmetics, footwear to sheepskins, plants, fruit and vegetables, an amazing food court and more.

Photo: Paddy's Markets/Destination NSW

Address: Corner of Thomas and Hay Streets, Haymarket

Public Transport: Light rail from Central Station to Paddy's Markets stop

Opening hours: Wed-Sun 9am-5pm

Phone: +61 2 9325 6200

Internet: paddysmarkets.com.au

Carriageworks Farmers Market



Every Saturday, more than 70 farmers and artisan food producers pack their trucks with fresh, seasonal and homemade produce and

head for the Carriageworks Farmers Market. Lovers of fresh produce and fine food can find a variety of goods including artisan breads, olive oil, boutique wine, sweets and gourmet fare from dips to chutneys.

Photo: Destination NSW

Address: 243 Wilson Street, Eveleigh

Public Transport: Train to Redfern station

Opening hours: Every Sat 8am-1pm

Phone: +61 2 8571 9099

Internet:

carriageworks.com.au/events/carriageworks-farmers-market

Oxford Street



A popular shopping destination for its boutiques, Oxford Street stretches through Sydney's eastern neighbourhoods of

Darlinghurst, Paddington and Woollahra. Explore designer fashion houses, art galleries, booksellers, furniture shops and take a shopping break in one of the many trendy cafés or enjoy lunch at one of the beautifully restored pubs in the main street or in side streets.

Photo: Jonathan Cami/Destination NSW

Internet: www.sydney.com/destinations/sydney/inner-sydney/paddington

The Intersection Paddington



The Intersection is a strip of handpicked boutiques and upcoming Australian designers on the corner of Oxford Street and Glenmore Road in

Paddington. It's home to top local designers, such as Willow, Ellery, sass & bide and Josh Goot, who have put Australia on the global map of fashion.

Photo: Destination NSW

Address: Corner of Oxford Street and Glenmore Road, Paddington

Public Transport: Bus 333 from Circular Quay

Phone: +61 2 4888 2359

Internet: www.theintersectionpaddington.com.au

Birkenhead Point Outlet Centre



Sydney's original factory outlet centre offers fashion designer labels at up to 70% off regular retail prices. Located beside the Birkenhead

Point Marina, enjoy spectacular views of Sydney Harbour while you browse through a huge range of your favourite fashion and lifestyle brands.

Photo: Destination NSW

Address: 19 Roseby Street, Drummoyne, Sydney

Public Transport: Bus from Town Hall, Druiitt Street

Opening hours: Mon-Wed 10am-5:30pm, Thu 10am-7:30pm, Fri 10am-5:30pm, Sat 9am-6pm, Sun 10am-6pm

Phone: +61 2 9812 8800

Internet: www.birkenheadpoint.com.au

ACCOMMODATION



Ethan Rohloff; Destination NSW

You'll find plenty of accommodation options in Sydney to suit your budget, from hotels with Sydney Harbour views to boutique hotels, B&Bs, and inexpensive youth and backpacker hostels. You can even camp on an island in the beautiful harbour.

EVENTS



Destination NSW

Sydney stages spectacular events year-round. With fireworks and arts festivals, musicals and outdoor concerts, the city enchants visitors. Start your year with the dazzling New Year's Eve fireworks on Sydney Harbour. The Sydney Festival is in January. At any time of the year, see a show at the Sydney Opera House or a blockbuster musical at a charming theatre. Don't miss Australia Day on January 26, and sports fans have plenty of choices. The Sydney Gay and Lesbian Mardi Gras culminates with a glittering parade in March. In winter, Vivid Sydney lights

up the city.

Sydney New Year's Eve



Welcome in the new year with one of the world's most impressive fireworks displays and join the 1.6 million along the Sydney Harbour

foreshore and filling the city's streets, bars and gardens. A children's fireworks display is at 9pm before the dazzling midnight display on one of the world's most beautiful natural harbours.

Photo: City of Sydney/Destination NSW

Internet: www.sydney.com/destinations/sydney/sydney-city/new-years-eve-sydney

Badu Gili



Badu Gili - meaning 'water light' in the language of the traditional owners of Bennelong Point, the Gadigal people - is a new

daily experience that will explore ancient First Nations stories in a spectacular seven-minute projection, illuminating the Opera House's eastern Bennelong sail year-round at sunset and 7 pm.

A celebration of the rich history and contemporary vibrancy of Australia's First Nations culture, Badu Gili continues the traditions of Bennelong Point, formerly known as Tubowgule, which has been a meeting place for the local Gadigal people for thousands of years.

Curated by the Opera House's Head of First Nations programming, Rhoda Roberts AO with the support of Yakazoo, the projections weave together the work of the diverse voices of

established artist and community leader Djambawa Marawili AM, vibrant watercolour painter Mervyn Rubuntja, internationally renowned artist and prestigious Telstra NATSIAA awards finalist Mabel Juli, painter, lecturer and traditional healer Patricia Ansell Dodds, ceramicist Penny Evans and emerging printmaker Aiona Tala Gaidan, with an original soundscape by Damian Robinson.

Badu Gili has been enabled by the Opera House, its Idealist donors and the Australia Council for the Arts.

Photo: Dan Boud/Destinations NSW

Address: Upper level Podium, Sydney Opera House

Phone: +61 2 9250 7111

Internet: www.sydneyoperahouse.com/tours-and-experiences/badu-gili-wonder-women

Vivid Sydney



This annual event of light, music and ideas is Sydney's premier winter festival, held over several weeks in May and June. Watch the city transform

into a spectacular canvas of light displays, with signature events such as the Lighting the Sails of the Sydney Opera House and the impressive Light Walk that meanders around Sydney Harbour and the city centre. Catch live performances in Sydney's iconic music venues with the Vivid Music and Vivid LIVE programs. Connect with the world's creative leaders at inspiring talks and workshops as part of Vivid Ideas.

Photo: Vivid Sydney - Light, Music and Ideas/Destination NSW

Internet: www.sydney.com/events/vivid-sydney

Sydney Gay & Lesbian Mardi Gras



Sydney's Gay and Lesbian Mardi Gras is a world-famous drawcard with its universal message of gay pride, diversity, equality, love and acceptance. The three-week calendar of shows, parties and exhibitions, kicks off in February each year and culminates in the glittering Mardi Gras parade in March featuring a splendid assortment of lavish floats, eye-popping costumes and vibrant colours.

Photo: Sydney Gay and Lesbian Mardi Gras/Destination NSW

Internet: www.mardigras.org.au

State Of Origin



State of Origin is one the highlights of Australia's sporting events. It brings together the best players of the Australian Rugby League competition. Long running rival teams, the New South Wales Blues and the Queensland Maroons, play for the best of three games before tens of thousands of fans.

Photo: Destination NSW

Address: ANZ Stadium, Edwin Flack Avenue, Sydney Olympic Park

Public Transport: Train to Olympic Park station

Internet: www.nrl.com/tickets/ampol-state-of-origin

Sydney Royal Easter Show



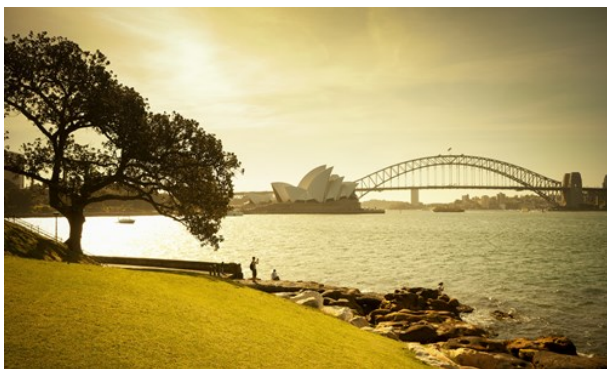
Bringing the country to the city since 1823, the Sydney Royal Easter Show celebrates all things agricultural and attracts about 900,000

visitors each year. It's held during the Easter school holidays in March and April. Taste some

of Australia's best fresh produce, discover great shopping, see more than 14,000 animals and enjoy hours of family fun with carnival rides, entertainment and more.

Photo: Sydney Royal Easter Show/Destination NSW
Address: Sydney Showground, 1 Showground Road, Sydney Olympic Park
Public Transport: Train to Olympic Park station
Internet: www.eastershow.com.au

TOURIST INFORMATION



Hamilton Lund; Destination NSW

Sydney is a clean, safe modern city with a sophisticated infrastructure to service your needs.

Sydney Airport (SYD)



Nestled on the northern shores of Botany Bay in Sydney's Mascot suburb, you'll find the grand Sydney Kingsford Smith International Airport —

the world's oldest continually operated commercial airport.

By car

Looking for a taxi? They're ready and waiting outside all terminals. Fancy driving yourself? You can grab a rental car at any terminal. Just remember, the car park is free as long as you're exiting within 15 minutes.

By train

The city centre is a brisk 13-minute train journey from the airport. The Airport Link, which runs about every 10 minutes, is your ticket to the city and beyond. The train station? It's up north of the terminal, accessible from Arrivals. Pay for your journey with an Opal Card (grab one from the station or WH Smith), or tap on with your Amex, Visa, or Mastercard.

By bus

Route 420, run by Sydney Buses, is a dependable service connecting Mascot Station to Burwood via the airport. Both T1 International and T3 Domestic terminals have stops, clearly marked on the arrivals level. You'll need an Opal transport card or a credit card to board.

By shuttle

For a more personalised transfer to and from the airport, there are several providers offering services to most of Sydney's suburbs and regional areas. Check out Mozio for options.

By bike

If two wheels are more your speed, undercover bike racks are situated on level 1 of the T1 International terminal and near the express pick-up area in the T2/T3 Domestic precinct.

Photo: Destination NSW
Address: Airport Drive, Mascot, Sydney
Phone: +61 2 9667 9111
Internet: www.sydneyairport.com.au

Public Transport



The Sydney public transport system consists of commuter rail, bus, ferry and light rail. Combined, they can get you virtually anywhere in the metropolitan area.

A handy companion for this network is the Opal card, your ticket to all public transport in Sydney. It caps daily and weekly fares (excluding Sydney Airport station fees) and can be picked up from train stations, the airport, and various city retailers. Tap on and off at Opal readers with the card, or use contactless-enabled Amex, Mastercard, or Visa cards or linked devices.

Buses are the city's lifelines, and include NightRide services for the wee hours. Central Station, near Chinatown, is your hub for local and regional trains and buses, with routes covering CBD, North Sydney, Bondi Junction, and the airport.

Sydney's light rail features the L1 Inner West network from Central Station to Dulwich Hill, and the CBD and South East Light Rail with lines to Randwick and Junior Kingsford.

The ferry system is your quick, scenic route across the harbour, with departures from Circular Quay to destinations like Manly, Taronga Zoo, Watsons Bay, and Rose Bay. Captain Cook also runs services to various spots, including Watsons Bay, Manly, Clifton Gardens, and Shark Island.

The river ferry offers a scenic 90-minute journey from Circular Quay to Parramatta, with stops at places like Cockatoo Island and Sydney Olympic

Park.

Photo: Destination NSW
Phone: +61 13 15 00
Internet: www.transportnsw.info

Taxi



Taxis are a convenient way to get around Sydney. They can be flagged down, found at a taxi rank, or booked on the phone or

online.

Silver Service Fleet
Phone: +61 133 100
www.silverservice.com.au

Legion Cabs
Phone: +61 131 451
www.legioncabs.com.au

Premier Cabs
Phone: +61 131 017
www.premiercabs.com.au

St George Cabs
Phone: +61 132 166
www.stgeorgecabs.com.au

Photo: Destination NSW

Post Office



There are numerous Australia Post offices located all over Sydney, where you can buy stamps and send mail and packages. Sydney's General Post Office is located at 1 Martin Place.

Photo: Simona Sergi/unsplash

Address: Australia Post – Sydney GPO, 1 Martin Place,
Sydney

Opening hours: Mon–Fri 9am–5pm, Sat & Sun closed

Phone: +61 13 13 18

Internet: www.auspost.com.au

Pharmacy



In Sydney, and Australia more broadly, there are several major pharmacy chains where you can pick up over-the-counter medications, prescription

drugs, personal care items, and more. The major pharmacy chains are Chemist Warehouse, TerryWhite Chemmart, Priceline Pharmacy, Amcal and Blooms The Chemist. It's always worth checking the opening hours as these can vary, especially on weekends and public holidays.

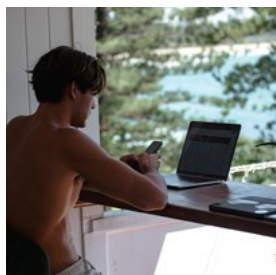
Photo: Mika Baumeister/unsplash

Address: Terrywhite Chemmart Macquarie Street Pharmacy
CBD, Shop 1/185 Macquarie Street, Sydney

Opening hours: Mon–Fri 7:30am–6pm, Sat & Sun closed

Phone: +61 2 9221 1622

Telephone



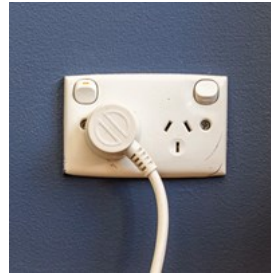
Australian Country Code:
+61 Sydney City Area
Code: 02 Calling Sydney
landlines from overseas:
+612 Calling Australian
mobiles from overseas:

+614

Calling overseas from within Australia: 0011

Photo: Mark Broadhead/unsplash

Electricity



Australia operates on a 230/240V supply voltage and 50Hz frequency. The country uses Type I power plugs, which feature two flat pins

forming a 'V' shape, along with a grounding pin. This standard is also commonly used in New Zealand, Argentina, China, and several Pacific island nations. Remember to pack a universal adapter if your devices use a different plug type to ensure hassle-free charging.

Photo: Mitchell Luo/unsplash

Population

Over 5.3 million

Currency

Australian Dollar (AUD)

Opening hours

Most shops are open 9 am to 5 pm daily, with late night trading on Thursday to 9 pm.

Internet

www.sydney.com

Newspapers

Sydney Morning Herald — www.smh.com.au

The Australian — www.theaustralian.com.au

Daily Telegraph — www.dailytelegraph.com.au

Sun-Herald — www.heraldsun.com.au

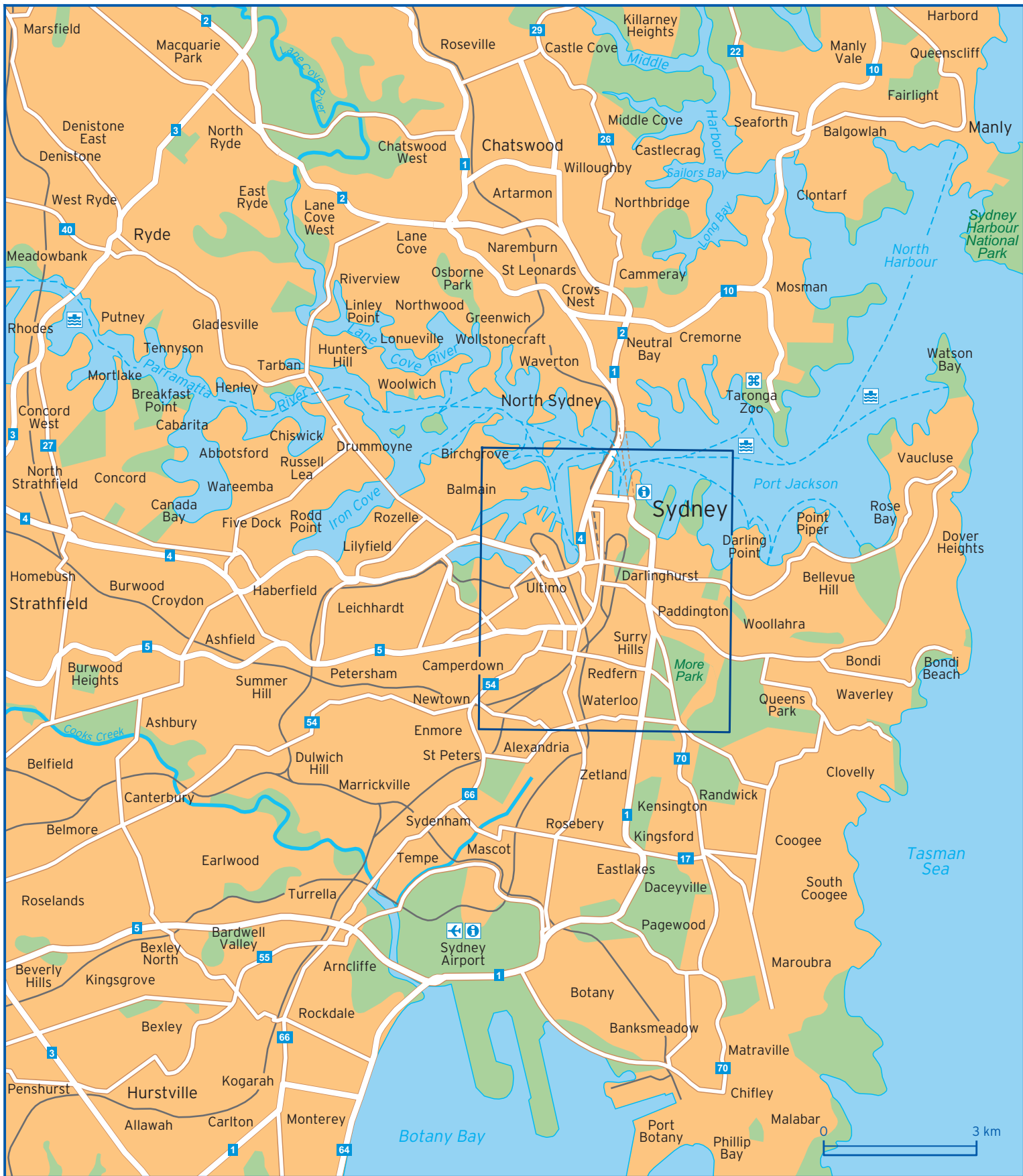
The Australian Financial Review — www.afr.com

Time Out Sydney — www.timeout.com/sydney

Emergency numbers

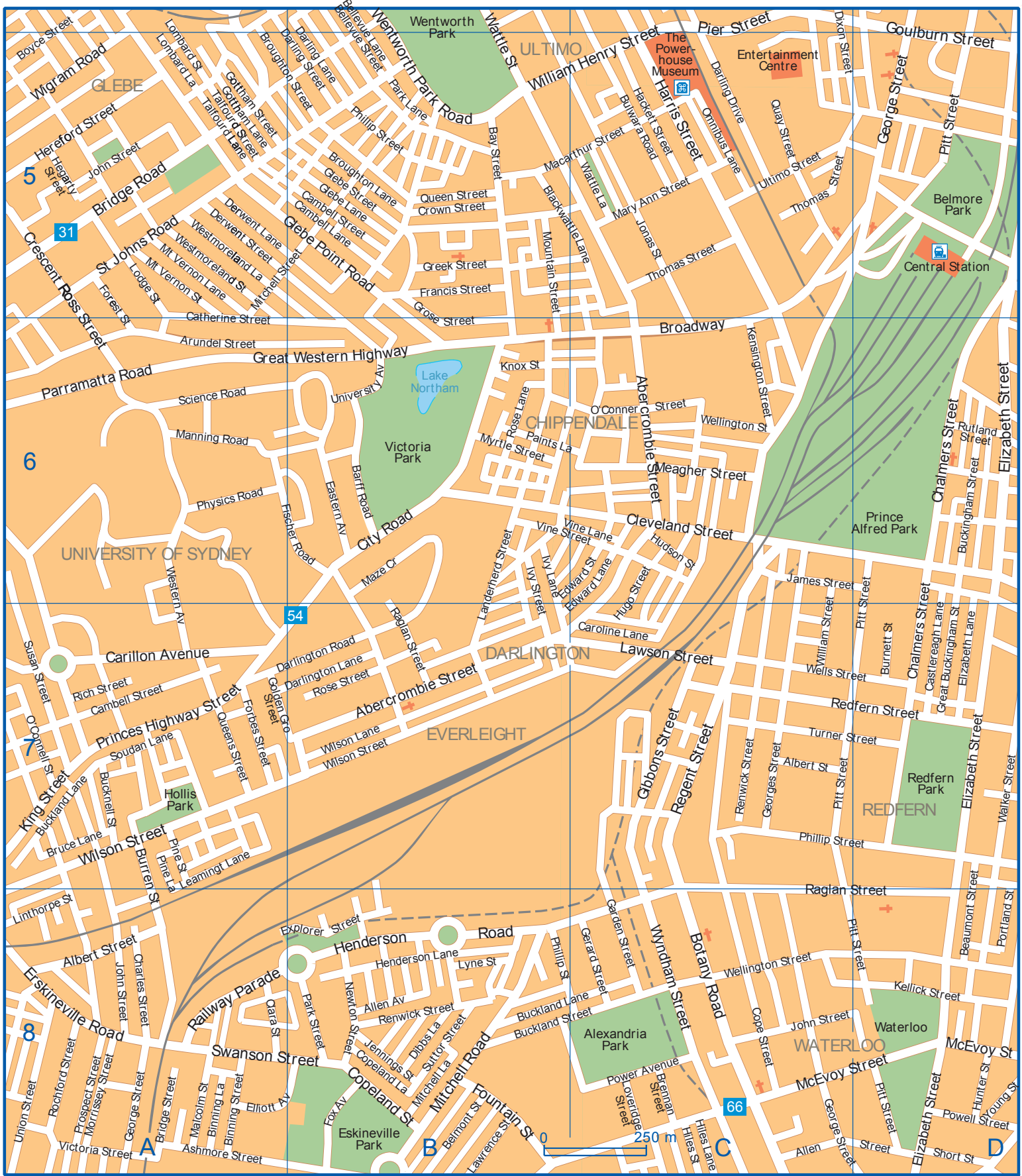
Emergency situations, police, ambulance, fire brigade: 000

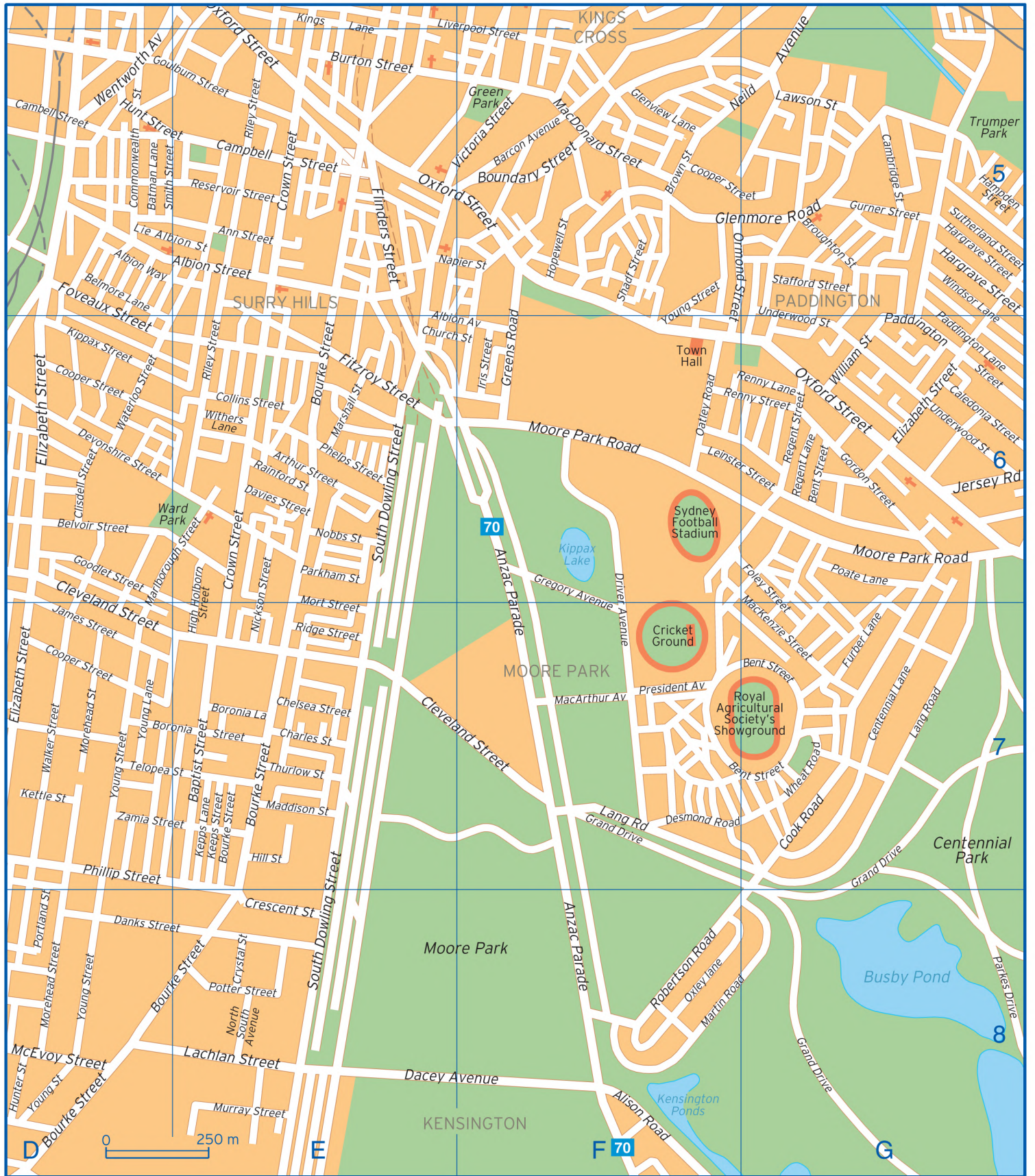












Abercrombie Street	B7 C6	Boyce Street	A4 A5	College Street	A1 E4
Ada Pl	B4 C4	Bradfield Highway	D1 D2	Collins Street	E6
Albert Street	A8 C7	Bradford Street	A2	Commonwealth Street	D5
Albion Avenue	E6 F6	Brennan Street	C8	Cook Road	G7
Albion Street	D5 E5	Bridge Road	A4 A5 B4	Cook Street	A4
Albion Way	D5	Bridge Street	A8 D2	Cooper Street	A1 D6 D7 F5 G5
Alex Street	A1	Broadway	C6	Cope Street	C8
Alison Road	F8	Brougham Street	F3 F4	Copeland Lane	B8
Allen Avenue	B8	Broughton Lane	B5	Copeland Street	B8
Allen Lane	A4	Broughton Street	A5 B5 G5	Cowper Wharf Roadway	F3
Allen Street	C8	Brown Street	F5	Craigend Street	F4
Ann Street	E5	Bruce Lane	A7	Crescent Ross Street	A5 A6
Anzac Bridge	A3	Buckingham Street	D6	Crescent Street	E8
Anzac Parade	F6 F7 F8	Buckland Lane	A7 B8 C8	Crown Street	B5 E4 E5 E6
Argyle Place	C1 D1	Buckland Street	B8 C8	Crystal Street	E8
Argyle Street	D1	Bucknell Street	A7	Cumberland Street	D1 D2
Art Gallery Road	E3	Bulwara Road	B3 B4 C4 C5	Curtin Place	D3
Arthur Street	E6	Bunn Street	B4 C4	Curtis Road	A1
Arundel Street	A6	Burnett Street	D7	Dacey Avenue	E8 F8
Ashmore Street	A8	Burren Street	A7 A8	Dailey Street	D2
Bank Street	A3 B3	Burton Street	E5	Dalgety Road	C1
Baptist Street	E7	Cahill Expressway	D2 E3	Danks Street	D8 E8
Barcon Avenue	F5	Caledonia Street	G6	Darling Drive	C5
Barff Road	B6	Cambell Lane	B5	Darling Lane	B4 B5
Bathurst Street	D4	Cambell Street	A1 A7 B5 D5	Darling Street	A1 A4 B5
Batman Lane	D5	Cambridge Street	G5	Darlinghurst Road	F4
Bay Street	B5	Campbell Street	E5	Darlington Lane	A7 B7
Bayswater Road	G4	Carillon Avenue	A7	Darlington Road	A7 B7
Bayswater Street	F4	Caroline Lane	C7	Davies Street	E6
Beaumont Street	D7 D8	Carrington Street	D3	Derwent Lane	A5
Bellevue Lane	B4 B5	Castlereagh Lane	D6 D7	Derwent Street	A5
Bellevue Street	B4 B5	Castlereagh Street	D3 D4	Desmond Road	F7 G7
Belmont Street	B8	Cathedral Street	E4 F4	Devonshire Street	D6
Belmore Lane	D5	Catherine Street	A6	Dibbs Lane	B8
Belvoir Street	D6	Centennial Lane	G7	Dixon Street	C4 C5
Bent Street	D2 F7 G6 G7	Central Street	D4	Donnelly Street	A2
Billyard Avenue	F3 G3	Challis Avenue	F3	Dowling Street	F3 F4
Binning Lane	A8	Chalmers Street	D6 D7	Driver Avenue	F6 F7
Binning Street	A8	Charles Street	A8 E7	Druitt Street	D4
Blackwattle Lane	B5 C5	Chelsea Street	E7	Duke Street	B1
Bland Street	E3 F3	Church Street	E6 F6	Earl Street	F4
Bligh Street	D2 D3	Circular Quay	D2	Eastern Avenue	B6
Bond Street	D2	City Road	B6	Easy Street	A3
Boronia Lane	E7	Clara Street	A8	Edward Lane	B7 C6
Boronia Street	D7 E7	Clarence Street	C2 D3 D4	Edward Street	B6 C6
Botany Road	C8	Clayton Street	A1	Elizabeth Lane	D7
Boundary Street	F5	Cleveland Street	C6 D6 D7 E7 F7	Elizabeth Street	D3 D4 D6 D7 D8 G6
Bourke Street	D8 E3 E4 E6 E7 E8	Clisdell Street	D6	Elliott Avenue	A8 B8
Bowman Street	A3 B3	Colgate Avenue	A1	Erskine Street	C3

Erslev Road	A8	Hargrave Street	G5	Lang Road	F7 G7
Explorer Street	A8 B8	Harrington Street	D2	Lawrence Street	B8
Ferry Road	A4	Harris Street	B3 B4 C5	Lawson Street	C7 G5
Fig Street	B4	Hart Street	A1	Leamingt Lane	A7 A8
Fischer Road	A6 B6	Hegarty Street	A5	Leichhardt Street	A4
Fitzroy Street	E6	Henderson Lane	B8	Leinster Street	F6 G6
Flinders Street	E5	Henderson Road	B8	Lie Albion Street	D5 E5
Foley Street	G6 G7	Hereford Street	A5	Lime Street	C3
Forbes Street	A7 E4 E5 F3 F4	Hickson Road	C1 C2 D1	Linthorpe Street	A8
Forest Street	A5 A6	High Holborn Street	E6 E7	Little Mount Street	B3 B4
Forsyth Street	A4	High Lane	C2	Liverpool Street	D4 E4 F5
Fountain Street	B8	High Street	C2	Lle Nichol Street	B1 B2
Foveaux Street	D5 D6	Hiles Lane	C8	Lodge Street	A5
Fox Avenue	B8	Hiles Street	C8	Lombard Lane	A5
Francis Lane	E4	Hill Street	E7	Lombard Street	A4 A5
Francis Street	B5 E4	Hopewell Street	F5	Loveridge Street	C8
Furber Lane	G7	Hudson Street	C6	Lower Fort Street	D1
Gallimore Avenue	B1	Hug Street	F3	Lyne Street	B8
Garden Street	C8	Hugo Street	C6 C7	MacArthur Avenue	F7
George Street	A8 C8 D1 D2 D3 D4 D5	Hunt Street	D5 E5	Macarthur Street	B5 C5
Georges Street	C7	Hunter Street	D3 D8	MacDonald Street	F5
Gerard Street	C8	Iris Street	F6	MacKenzie Street	G6 G7
Gibbons Street	C7	Ithaca Road	G3	Macleay Street	F3 F4
Gladstone Street	A2	Ivy Lane	B6	Macquarie Street	E2 E3
Glebe Lane	B5	Ivy Street	B6 B7	Maddison Street	E7
Glebe Point Road	A4 A5 B5	James Street	C6 D7	Malcolm Street	A8
Glebe Street	B5	Jamison Street	D2	Manning Road	A6
Glenmore Road	F5 G5	Jane Street	A2	Margaret Street	D3
Glenview Lane	F5	Jennings Street	B8	Market Street	D3
Golden Grove Street	A7	Jersey Road	G6	Marlborough Street	D7 E6
Goodlet Street	D6	John Street	A5 A8 B3 C8	Marshall Street	E6
Gordon Street	G6	Jonas Street	C5	Martin Place	D3
Gottham Lane	A5	Jones Bay Road	B2 B3	Martin Road	F8 G8
Gottham Street	A5	Jones Street	B3 B4 B5	Mary Ann Street	C5
Goulburn Street	D4 D5 E5	Jubilee Pl	A2 B2	Maze Cr	B6
Grafton Street	A2	Judge Street	F4	McElhone Street	F3 F4
Grand Drive	F7 G7 G8	Keeps Street	E7	McEvoy Street	C8 D8
Great Buckingham Street	D6 D7	Kellick Street	D8	McLachlan Avenue	F5 G4
Great Western Highway	A6 B6	Kensington Street	C6	Meagher Street	C6
Greek Street	B5	Kent Street	C2 C3 D3 D4	Mill Street	B3
Greenknowe Avenue	F3 G4	Kepps Lane	E7	Miller Street	B3
Greens Road	F5 F6	Kettle Street	D7	Mitchell Lane	B8
Gregory Avenue	F6 F7	King Street	A7 C3 D3	Mitchell Road	B8
Grose Street	B5 B6	Kings Cross Road	F4	Mitchell Street	A5 B5
Grosvenor Street	D2	Kings Lane	E4	Moore Park Road	F6 G6
Gurner Street	G5	Kippax Street	D6	Morehead Street	D7 D8
Hackett Street	C5	Knox Street	B6	Morrissey Street	A8
Hampden Street	G5	Lachlan Street	E8	Mort Street	E7
Harbour Street	C4	Landerherd Street	B6 B7	Mount Street	B3

Mountain Street	B5 B6	Powell Street	D8	Sussex	Street
Mrs Macquaries Road	E3 F2	Power Avenue	C8	Sutherland Street	G5
Mt Vernon Lane	A5	Premier Lane	E4 F4	Suttor Street	B8
Mt Vernon Street	A5	President Avenue	F7	Swanson Street	A8 B8
Murray Street	C3 C4 E8	Princes Highway Street	A7	Sydney Harbour Bridge	D1
Myrtle Street	B6	Prospect Street	A8	Talfourd Lane	A5
Napier Street	E5 F5	Pymont Street	B3 B4 C4	Talfourd Street	A5
Neild Avenue	F5 G5	Quarry Master Drive	A3 B3	Taylor Street	A4
New Beach Road	G4	Quay Street	C5	Telopea Street	D7 E7
New South Head	G4	Queen Street	B5	Thames Street	A1
Newton Street	B8	Queens Street	A7	Thomas Street	C5
Nicholson Street	B1 E3 F3	Raglan Street	B7 C8 D8	Thurlow Street	E7
Nickson Street	E6 E7	Railway Parade	A8	Toxteth Road	A4
Nobbs Street	E6	Rainford Street	E6	Trouton Street	A1
North South Avenue	E8	Redfern Street	C7 D7	Turner Street	C7 D7
Oatley Road	F6	Regent Lane	G6	Tusculum Street	F3 F4
Omnibus Lane	C5	Regent Street	C7 G6	Ultimo Street	C5
Ormond Street	F5 F6	Renny Lane	F6 G6	Underwood Street	G5 G6
Orwell Street	F4	Renny Street	F6 G6	Union Street	A8 B3 C3
Oxford Street	E4 E5 F5 G6	Renwick Street	B8 C7	University Avenue	B6
Oxley lane	F8	Reservoir Street	E5	Victoria Street	A8 F3 F4 F5
O'Connell Street	A7 D2 D3	Rich Street	A7	Vincent Street	A2
O'Conner Street	C6	Ridge Street	E7	Vine Lane	B6 C6
Paddington Lane	G5 G6	Riley Street	E4 E5 E6	Vine Street	B6 C6
Paddington Street	G6	Robert Street	A2	Walker Street	D7
Paints Lane	B6	Robertson Road	F8	Wallace Street	A2
Palmer Lane	E4 E5	Rochford Street	A8	Ward Avenue	F4
Palmer Street	E4	Rose Lane	B6	Waterloo Street	D6
Park Lane	B5	Rose Street	B7	Waterview Street	A1
Park Street	B8 D4	Roslyn Gardens Road	F4 G4	Wattle Lane	C5
Parkham Street	E6	Roslyn Street	F4	Wattle Street	B4 B5
Parks Drive	G8	Rutland Steet	D6	Wellington Street	C6 C8
Parramatta Road	A6	Saunders Street	B3	Wells Street	C7 D7
Paul Street	B1	Science Road	A6	Wentworth Avenue	D5
Pearson Street	B1	Shadf Street	F5	Wentworth Park Road	B4 B5
Phelps Street	E6	Sheerly Street	A4	Western Avenue	A6 A7
Philip Lane	D2 E2	Shelly Street	C3	Western Distributor	C2 C3
Philip Street	D3	Short Street	A1 D8	Westmoreland Lane	A5
Phillip Street	B5 B8 C7 D2 D3 D7	Sir John Young Crescent	E3	Westmoreland Street	A5
Physics Road	A6	Smith Street	D5 E5	Wheat Road	C3 G7
Pier Street	C4 C5	Sommerville Road	A3	Wigram Road	A5
Pine Lane	A7 A8	Soudan Lane	A7	William Henry Street	B5 C5
Pine Street	A7	South Dowling Street	E6 E7 E8	William Street	B2 C6 C7 E4 G6
Pitt Street	C7 D2 D4 D6 D8	South Street	G4 G5	Wilson Lane	B7
Poate Lane	G6	St Johns Road	A5	Wilson Street	A7 B7 E3 F3
Point Street	B2 B3	Stafford Street	G5	Windmill Street	C1 D1
Portland Street	D8	Stanley Street	E4	Windsor Lane	G5 G6
Potter Street	E8	Surrey Street	F4	Withers Lane	E6
Pottinger Street	D1	Susan Street	A7	Womerah Avenue	F4

Wylde Street	F3	Yeend Street	A1	Young Street	D2 D7 D8 F5 F6
Wyndham Street	C8	York Street	D3	Yurong Lane	E4
Wynyard Street	D3	Young Lane	D7	Zamia Street	D7 E7