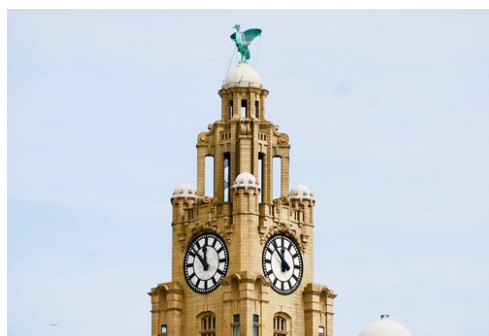




Photo: Atanas Paskalev/Unsplash



Conor Samuel/cc0/Unsplash



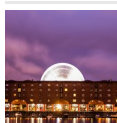
Neil Martin/cc0/Unsplash



SAKhanPhotography/Shutterstock.com

From its historic waterfront, adorned with the iconic Albert Dock to its impressive cathedrals and thriving arts scene, Liverpool offers an interesting blend of old and new. Embrace the warmth of the locals, known as Liverpudlians or Scousers as you explore its museums and galleries, cheer on its passionate football teams, and immerse yourself in The Beatles' legacy. Prepare to be enchanted by the charm of Liverpool, where history, creativity, and a contagious spirit converge to create an unforgettable experience.

## Featured



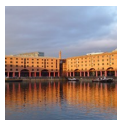
### Tate Liverpool

Explore the ever-evolving landscape of art at Tate Liverpool, one of the lar...



### Pier Head

The Pier Head is a group of buildings on the banks of the River Mersey. Here...



### Royal Albert Dock

Explore the Royal Albert Dock and experience a captivating fusion of history...



### 'Another Place'

This spectacular art installation by Antony Gormley consists of 100 life-siz...



### Knowsley Safari Park

Not everyone has the opportunity to travel to Africa, but if you are in Live...

## Top 5



### The Ultimate Beatles Tour ...

No trip to Liverpool is complete without taking in some Beatles history. Aft...



### Liverpool FC Museum

Whether you're a die-hard football fan or simply curious about football hist...



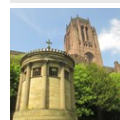
### The Beatles Story Exhibiti...

Discover The Beatles Story, the world's largest permanent museum dedicated t...



### Mendips — John Lennon's Ch...

Don't miss the extraordinary opportunity to explore the place that shaped th...



### Liverpool Cathedral

The Liverpool Cathedral is a large 20th-century Anglican cathedral which con...

## THE CITY



Conor Samuel/CC0/Unsplash

Originally a small fishing village, Liverpool began to flourish in the late 17th century as it developed into a prominent trading port — the city's strategic location on the River Mersey made it a hub for trade with the Americas and West Indies.

As the 18th century unfolded, Liverpool emerged as one of the world's foremost ports. The 19th century marked a turning point for the city, as it became a central player in the Industrial Revolution. Liverpool's factories, shipping enterprises, and commercial activities thrived, attracting a surge of people seeking employment in its docks and manufacturing sector. The city's population skyrocketed, reflecting its newfound importance on the global stage.

Trade continued to grow, solidifying Liverpool's maritime significance. An important milestone in its development was the construction of the iconic Albert Dock in the mid-19th century. This monumental structure not only expanded Liverpool's capacity for trade but also cemented its reputation as a powerhouse in global commerce.

In more recent times, Liverpool has undergone a remarkable transformation. In 2008, it earned the prestigious award of European Capital of

Culture, leading to significant investment and revitalisation projects. The city has embraced its cultural heritage, celebrating its musical legacy, including The Beatles, and showcasing its world-class museums, art galleries, and theatres.

Today, Liverpool is a vibrant and dynamic city, known for its diverse communities, thriving music and arts scene, and passionate football culture. Its waterfront, designated as a UNESCO World Heritage site, continues to be a hub of activity, attracting visitors from around the globe.

## DO & SEE



ID 334926/Pixabay.com

Liverpool's most popular sons are, undoubtedly, The Beatles. Every year, millions of visitors come here to follow their journey. From their very first gig at the Cavern Club all the way to their international stardom.

However, Liverpool extends beyond The Beatles' legacy. It is also home to two top football clubs, Everton FC and Liverpool FC, the latter being amongst the most celebrated clubs in Europe with 19 League titles and 6 European Cup titles.

Exploring the city's historic landmarks and architectural wonders also comes highly recommended.



## The Ultimate Beatles Tour Experience in Liverpool



No trip to Liverpool is complete without taking in some Beatles history. After all, this is where it all began. And even after more than 50 years since the group split up, the city still lives and breathes Beatlemania.

Join the ultimate Beatles tour experience in Liverpool for a fascinating insight into the lives of the Fab Four. Drive around the city on a replica of John Lennon's iconic Rolls-Royce Phantom and see the sights, from the houses where the band members grew up to Penny Lane and the spot that inspired Strawberry Fields Forever.

Photo: Neil Martin/cc0/Unsplash

## Liverpool FC Museum



Whether you're a die-hard football fan or simply curious about football history, a visit to the Liverpool FC Museum is an absolute must for any visitor to the city. Delve into its glorious past and remarkable achievements. From iconic victories to legendary players, the museum showcases the club's proud heritage through engaging exhibits and interactive displays. Discover the stories behind the triumphs, relive unforgettable moments, and marvel at the collection of memorabilia that encapsulates the spirit of Liverpool FC.

Photo: macblack/cc0/Pixabay

Address: Anfield Stadium, Walton Breck Road, Anfield, Liverpool

Phone: +44 151 260 6677

Internet: [www.liverpoolfc.com/stadium-tours/tours](http://www.liverpoolfc.com/stadium-tours/tours)

## The Beatles Story Exhibition/Museum



Discover The Beatles Story, the world's largest permanent museum dedicated to the iconic band, located on the historic Royal Albert

Dock. Immerse yourself in the fascinating journey of The Beatles, tracing their footsteps from their humble beginnings in Hamburg to their meteoric rise to global stardom. Explore their lives, their music, and the cultural impact they made on the world. The Beatles Story is a must-visit destination for fans and music enthusiasts, offering an immersive experience that brings the band's extraordinary story to life.

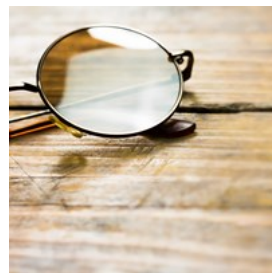
Photo: Alex Linch / Shutterstock.com

Address: Britannia Vaults, Royal Albert Dock, Liverpool

Opening hours: Daily 9am–5pm

Internet: [www.beatlesstory.com](http://www.beatlesstory.com)

## Mendips — John Lennon's Childhood House



Don't miss the extraordinary opportunity to explore the place that shaped the musical genius of John Lennon and the legendary Beatles

with a tour of John Lennon's childhood home. Step into the house where Lennon resided with his aunt Mimi and uncle George, the very place where several iconic Beatles songs were composed and rehearsed. Marvel at the collection of photos and Beatles memorabilia on display as knowledgeable guides take you through the tour. Remember to secure your tickets in advance through the provided website to ensure a seamless visit.

Photo: sagulpol2807 / Shutterstock.com

Address: 251 Menlove Avenue, Liverpool

Opening hours: Mon-Sat 8am-6:30pm, Sun closed

Phone: +44 344 800 1895

Internet: [www.nationaltrust.org.uk/visit/liverpool-lancashire/the-beatles-childhood-homes](http://www.nationaltrust.org.uk/visit/liverpool-lancashire/the-beatles-childhood-homes)

Email: [thebeatleshomes@nationaltrust.org.uk](mailto:thebeatleshomes@nationaltrust.org.uk)

## Liverpool Cathedral



The Liverpool Cathedral is a large 20th-century Anglican cathedral which contains the biggest organ in the United Kingdom as well as the

world's heaviest peal of bells. As you ascend to the top of its tower, prepare to be rewarded with breathtaking panoramic views that stretch far and wide.

Photo: Matt Brown/cc by 2.0/Flickr(image cropped)

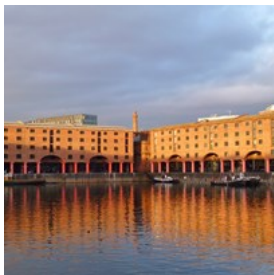
Address: Saint James Road, Liverpool

Opening hours: Daily 10am-6pm

Phone: +44 151 709 6271

Internet: [www.liverpoolcathedral.org.uk](http://www.liverpoolcathedral.org.uk)

## Royal Albert Dock



Explore the Royal Albert Dock and experience a captivating fusion of history, art, and entertainment. Opened in 1846, this architectural

marvel, designed by Jesse Hartley and Philip Hardwick, stands as Britain's first structure constructed entirely from cast iron, brick, and stone, with no reliance on wood for its structure. This iconic complex houses an impressive array of cultural landmarks, including the renowned Tate Liverpool, The Beatles Story, Merseyside Maritime Museum, and the thought-provoking International Slavery Museum. Beyond its rich cultural offerings, the dock also boasts a vibrant

assortment of shops, bars, and restaurants, creating a lively and diverse destination for visitors.

Photo: Radarsmum67/cc by 2.0/Flickr(image cropped)

Address: Waterfront Pier Head Promenade Liverpool

Internet: [albertdock.com](http://albertdock.com)

## Tate Liverpool



Explore the ever-evolving landscape of art at Tate Liverpool, one of the largest galleries of modern and contemporary art outside

of London. Once bustling with maritime activity, now these converted dock buildings house temporary and permanent international art exhibitions. Be sure to check out their website to see what's on while you are in town.

Photo: Neil Martin/Pexels

Address: Royal Albert Dock, Liverpool

Opening hours: Daily 10am-5:30pm

Phone: +44 151 702 7400

Internet: [www.tate.org.uk/visit/tate-liverpool](http://www.tate.org.uk/visit/tate-liverpool)

Email: [information@tate.org.uk](mailto:information@tate.org.uk)

## Walker Art Gallery



Founded by local brewer Andrew Barclay Walker in 1877, the Walker Art Gallery has become a cultural gem in Liverpool. This magnificent

institution proudly showcases one of the largest art collections in England outside of London, including an array of masterpieces by renowned artists such as Rubens, Rembrandt, Poussin, and Gainsborough.

Photo: Smith & Brown/cc by 2.0/Flickr(image cropped)

Address: William Brown Street, Liverpool

Opening hours: Tue–Sun 10am–5pm, Mon closed  
Phone: +44 151 478 4199  
Internet: [www.liverpoolmuseums.org.uk/walker-art-gallery](http://www.liverpoolmuseums.org.uk/walker-art-gallery)

### 20 Forthlin Road — Paul McCartney's Home



It is possible to have a combined tour of Paul McCartney's childhood home and Lennon's. The house is now a part of the National Trust, which is also the only authorized ticket seller. It is necessary to arrive at the sight with your tickets already bought at the website below.

Photo: Puffystriker/cc0/Pixabay  
Address: 20 Forthlin Road, Liverpool  
Opening hours: Mon–Sat 9am–6:30pm, Sun closed  
Phone: +44 844 800 4791  
Internet: [www.nationaltrust.org.uk/visit/liverpool-lancashire/the-beatles-childhood-homes](http://www.nationaltrust.org.uk/visit/liverpool-lancashire/the-beatles-childhood-homes)

### St George's Hall



Built in the mid-19th century, St George's Hall is a Neoclassical building which contains concert halls and a law court. Throughout its history, St George's Hall has played host to numerous events, including concerts, exhibitions, and even high-profile trials.

It is possible to book a guided tour, where you will get a chance to visit its prison cells and courtrooms as well as see the breathtaking Concert Room with its opulent crystal chandelier and walls lined with Goddess-like statues along with the biggest classical reception room in the UK, the sumptuous Great Hall.

Photo: Tony Hisgett/cc by 2.0/Flickr(image cropped)  
Address: Saint George's Place, Liverpool

Opening hours: Mon–Sat 9:30am–5pm, Sun closed  
Internet: [www.stgeorgeshallliverpool.co.uk](http://www.stgeorgeshallliverpool.co.uk)  
Email: [stgeorgeshall@liverpool.gov.uk](mailto:stgeorgeshall@liverpool.gov.uk)

### Maritime Museum



The Maritime Museum tells the story of Liverpool's dock. Find out the impact Liverpool had on the shipping industry, learn about the slave trade, and visit the Titanic exhibition.

Photo: Roland Turner/cc by-sa 2.0/Flickr(image cropped)  
Address: Royal Albert Dock, Liverpool  
Opening hours: Tue–Sun 10am–5pm, Mon closed  
Phone: +44 151 478 4499  
Internet: [www.liverpoolmuseums.org.uk/maritime-museum](http://www.liverpoolmuseums.org.uk/maritime-museum)

### Royal Liverpool Philharmonic



The Beatles, The Rolling Stones, and Buddy Holly have all appeared here during their career. The Royal Liverpool Philharmonic sells over 250,000 tickets annually and if there is a concert on while you are visiting you should take the chance and go.

Photo: YannaZazu/cc0/Pixabay  
Address: Hope Street, Liverpool  
Phone: +44 151 709 3789  
Internet: [www.liverpoolphil.com](http://www.liverpoolphil.com)

### 'Another Place'



This spectacular art installation by Antony Gormley consists of 100 life-size figures made of cast iron spread out on Crosby Beach, on the Liverpool shore. Weighing an impressive 650



kilograms each, the figures of 'Another Place' are exact replicas of the artist's own body, standing firmly on the sandy beach. Positioned to face the sea, they gaze out towards the horizon with a sense of silent anticipation. They have been temporarily exhibited in different places in Europe before permanently landing in this gorgeous sight.

Photo: The Stephen J Mason Photography Collection/cc by-sa 2.0/Wikimedia(image cropped)

Address: Crosby Beach

Internet: [www.visitliverpool.com/listing/another-place-by-antony-gormley/16098101](http://www.visitliverpool.com/listing/another-place-by-antony-gormley/16098101)

### Pier Head



The Pier Head is a group of buildings on the banks of the River Mersey. Here you will find many different landmarks, and a perfect place to start a stroll and get to know the city.

Photo: Andrew/cc by 2.0/Flickr(image cropped)

Address: Pier Head, Liverpool

### Knowsley Safari Park



Not everyone has the opportunity to travel to Africa, but if you are in Liverpool you can get a taste of it by visiting Knowsley Safari Park, located in Prescot, less than 30 minutes away from Liverpool. Here you can admire animal species from the Savannah and, if you dare, go on the walk-around tour.

Photo: Tambako The Jaguar/cc by-nd 2.0/Flickr(image cropped)

Address: Prescot, UK

Opening hours: Mon-Fri 10am-5:30pm, Sat & Sun 10am-6pm

Phone: +44 151 430 9009

Internet: [www.knowsleysafariexperience.co.uk](http://www.knowsleysafariexperience.co.uk)

Email: [safari.park@knowsley.com](mailto:safari.park@knowsley.com)

### Formby Point



Formby Point is a picturesque stretch of coastline, situated on the Irish Sea, known for its high sand dunes, vast beaches, and diverse ecosystem. The area offers a relaxed setting for leisurely walks, picnics, or simply soaking up the sun.

Photo: Berit Watkin/cc by 2.0/Flickr(image cropped)

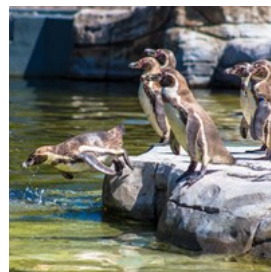
Address: Formby, Liverpool

Internet:

[www.nationaltrust.org.uk/visit/liverpool-lancashire/formby](http://www.nationaltrust.org.uk/visit/liverpool-lancashire/formby)

More Info: The beach is approximately 40 minutes from the Liverpool city centre.

### Chester Zoo



The most visited zoo in the UK offers an extensive diversity of species and around 35,000 different animals at only a 35-minute car ride south of Liverpool's city centre. You can easily spend an entire adventurous day with your family or partner exploring the 128 acres of this zoological garden. The zoo contains highly endangered animals such as black rhinos, Bornean orangutans and Asian elephants, to name a few.

Photo: Gary Cox/Shutterstock.com

Address: Chester, UK

Opening hours: Daily 10am-5pm

Phone: +44 1244 380 280

Internet: [www.chesterzoo.org](http://www.chesterzoo.org)

## DINING



*SJ/unsplash*

Liverpool's vibrant restaurant scene has blossomed in recent decades, with new eateries popping up all over town. Boasting the oldest Chinese community in Europe, Liverpool's Chinatown area is a culinary haven with a myriad of exceptional Asian restaurants.

But Liverpool's diverse culinary landscape doesn't end there. Beyond Chinatown, the city is teeming with local ethnic restaurants, each offering its own unique flavours and specialities. From Mediterranean delights to exotic Indian spices and beyond, there's a culinary adventure awaiting in every corner of the city.

### The London Carriage Works



Once the warehouse of a coach and carriage builders, The London Carriage Works has been transformed into a culinary gem. Nestled

within the Hope Street Hotel, this esteemed restaurant serves modern British dishes crafted with local, fresh, and seasonal produce. Step inside the exposed-brick dining room, where history meets contemporary elegance and embark on a gastronomic journey, where each dish is thoughtfully prepared to showcase the best flavours of British cuisine.

Photo: Edsel Little/cc by-sa 2.0/Flickr(image cropped)

Address: 40 Hope Street, Liverpool

Phone: +44 151 705 2222

Internet: [www.hopestreethotel.co.uk/dining](http://www.hopestreethotel.co.uk/dining)

### Sapporo Teppanyaki



Sapporo Teppanyaki is a lively Japanese restaurant that promises an unforgettable dining experience. The restaurant is renowned

for its sizzling meats cooked on flaming hotplates, an array of sushi options, and a great selection of whisky and sake. But the best of dining here is watching the preparation of your food. Get ready to be entertained as their talented chefs take centre stage, and with a uniquely theatrical style, skillfully prepare your meal right before your eyes.

Photo: \*highlimitzz/cc by 2.0/Flickr(image cropped)

Address: 134 Duke Street, Liverpool

Opening hours: Daily noon-10pm

Phone: +44 151 705 3005

Internet: [sapporo.co.uk](http://sapporo.co.uk)

Email: [liverpool@sapporo.co.uk](mailto:liverpool@sapporo.co.uk)

### PANAM Restaurant & Bar



Housed in a spacious Victorian dock warehouse, PANAM is a contemporary dining and function venue offering the best of British

cuisine, plus cocktails with spectacular dockside views.

Photo: LearningLark/cc by 2.0/Flickr(image cropped)

Address: Royal Albert Dock, Liverpool

Opening hours: Mon-Thu 11am-9pm, Fri 11am-10pm, Sat 10am-11pm, Sun 10am-7pm

Phone: +44 151 702 5831

Internet: [panamliverpool.co.uk](http://panamliverpool.co.uk)

### Shiraz Palace



Shiraz Palace is a spacious bistro serving Mediterranean and Middle Eastern cuisine, plus a fine selection of wines, beers, and spirits in a modern two-floor venue.

Photo: Alfa Photostudio / Shutterstock.com  
Address: 45 Ranelagh Street, Liverpool  
Opening hours: Daily 8am-11pm  
Phone: +44 151 707 7700

### Spire



Spire offers an exquisite dining experience that combines modern British and European cuisine served in an exposed brick setting adorned with modern art. While it may be considered a little pricey, the experience it provides is truly worth every penny.

Photo: Ewan Munro/cc by-sa 2.0/Flickr(image cropped)  
Address: 1 Church Road, Liverpool  
Opening hours: Wed-Fri noon-9pm, Sat 3-9:30pm, Sun noon-5:30pm, Mon & Tue closed  
Phone: +44 151 734 5040  
Internet: spirerestaurant.co.uk  
Email: info@spirerestaurant.co.uk

### Brasco Lounge



Brasco Lounge is a laid-back, waterfront café and bar serving a great selection of tapas as well as eclectic global comfort food. With seats on the dockside, it's the perfect spot to indulge in delicious cuisine while enjoying the serene waterfront views.

Photo: jeffreyw/cc by 2.0/Flickr(image cropped)

Address: 27a Mann Island, Mann Island Buildings, Liverpool  
Opening hours: Tue 10am-11pm, Wed-Sun 9am-11pm, Mon closed  
Phone: +44 151 236 5085  
Internet: thelounges.co.uk/brasco/  
Email: brasco@thelounges.co.uk

### CAFÉS



Free-Photos / Pixabay.com

After walking all around Liverpool, which means walking a lot, here are some lovely cafés where you can rest your feet and enjoy a good cup of coffee or tea, after all, you're in England.

### Moose Coffee



Moose Coffee is a vibrant café that expertly captures the essence of American and Canadian breakfast traditions. With its comfortable

banquettes, it provides the perfect setting to indulge in an all-day American breakfast or some brunch delights. The menu boasts a tempting array of breakfast options, including potato hash, creamy scrambled eggs mixed with pesto, pine nuts, and cured ham, as well as organic bacon and eggs Benedict. If you have a sweet tooth, their homemade pancakes, French toast, and waffles smothered in maple syrup are a must-try.

Photo: Cee/Unsplash  
Address: 6 Dale Street, Liverpool



Opening hours: Daily 8am-5pm  
Phone: +44 151 227 4880  
Internet: [www.moosecoffee.co](http://www.moosecoffee.co)

### Café at Tate Liverpool



Immerse yourself in the vibrant designs of British pop artist Sir Peter Blake while enjoying a cup of tea (or coffee) at the stylish café of Tate

Liverpool. From breakfast to lunch and afternoon tea, the menu offers an array of delectable options. Delight in savoury treats like soup, pastries, and sourdough toasties, alongside an assortment of cakes, biscuits, and the irresistible vegan banana loaf. Complement your meal with a selection of coffees, teas, and hot chocolates, or alcoholic beverages. All of this can be enjoyed while taking in the breathtaking view of the magnificent Albert Dock.

Photo: [congerdesign/Pixabay.com](#)  
Address: Royal Albert Dock, Liverpool  
Opening hours: Daily 10am-5:30pm  
Phone: +44 151 702 7400  
Internet: [www.tate.org.uk/visit/tate-liverpool/cafe](http://www.tate.org.uk/visit/tate-liverpool/cafe)

### BARS & NIGHTLIFE



*Sebastian Ervi/cc0/Unsplash*

Liverpool's nightlife is renowned for its vibrant and energetic atmosphere, making it a destination where fantastic times are practically

guaranteed. With a diverse population stemming from its universities, the city attracts a lively mix of people from around the globe, contributing to the cosmopolitan spirit that permeates its social scene.

When it comes to bars, Liverpool offers a plethora of choices in the city centre. One area that stands out is Victoria Street, drawing tourists not only for its association with The Beatles but also for its abundance of top-notch bars and clubs.

Whether you're seeking a cosy pub to unwind with friends, a trendy cocktail bar for a night of sophistication, or a lively nightclub to dance the night away, Liverpool has got it all.

### The Cavern Club



The Cavern Club is widely famous for featuring some of The Beatles' earlier shows — they first played here in February 1961. It still hosts many interesting live music events as well as tribute acts in its intimate, brick vaulted cellars.

Photo: [StockSnap/cc0/Pixabay](#)  
Address: 10 Mathew Street, Liverpool  
Opening hours: Sun-Wed 11am-midnight, Thu & Fri 11am-1am, Sat 11am-2am  
Phone: +44 151 236 9091  
Internet: [www.cavernclub.com](http://www.cavernclub.com)

### Alma De Cuba



Set in a spectacular location in a former 18th-century catholic church, Alma De Cuba is a Cuban restaurant and bar that has to be seen to

be believed. If you fancy sipping on a cocktail at an altar, this is your chance.

Photo: Tatyana Vega/cc0/Unsplash

Address: Saint Peters Church, Seel Street, Liverpool

Phone: +44 151 459 3449

Internet: alma-de-cuba.com

Email: info@alma-de-cuba.com

### Hot Water Comedy Club



If you are looking for the perfect destination for a fun-filled night out in Liverpool, then be sure to make your way to Hot Water. This small comedy

club, right in the heart of the city centre, will have you immersed in a world of humour as talented comedians deliver side-splitting performances that will have you laughing from start to finish.

Photo: Skitterphoto / Pexels.com

Address: 45 Hardman Street, Liverpool

Opening hours: Mon 6pm-11pm, Tue closed, Wed & Thu 6pm-11pm, Fri & Sat 4pm-midnight, Sun 6pm-11pm

Phone: +44 7478 699007

Internet: www.hotwatercomedy.co.uk

### Cains Brewery Village



Housed in the former brewery buildings, Cains Brewery Village is a vibrant destination offering an array of attractions, including

bars, coffee shops, food markets, and more. Some incredible venues to explore within the village are Golf Fang, Baltic Market, and Peaky Blinders Bar. If you're a fan of street food, Baltic Market is a must-visit, with its ever-changing menu featuring tasty options like wood-fired pizzas, Korean wings, and bubble waffles. For a

unique experience, head to Golf Fang, where you can enjoy 18 holes of crazy golf while sipping on their wacky cocktails.

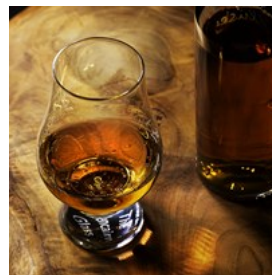
Photo: Kjetil Kolbjornsrud / Shutterstock.com

Address: Stanhope Street, Liverpool

Phone: +44 7973 730999

Internet: www.breweryvillage.com

### Berry & Rye



This bar has chosen a Prohibition-era theme and sticks to it very closely. It's quite difficult to find — you'll have to knock on an anonymous

door and wait for a doorman to let you in. Once inside, prepare to be whisked away into a world of expertly crafted cocktails, whiskeys, along with indulgent dessert drinks and delectable charcuterie boards.

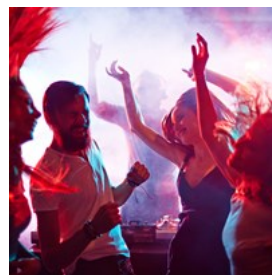
Photo: felix\_w/cc0/Pixabay

Address: 48 Berry Street, Liverpool

Opening hours: Tue-Thu 7pm-1am, Fri & Sat 5pm-2am, Sun 5pm-1am, Mon closed

Internet: berryandrye.uk

### Level Nightclub



Spread over three floors, Level is one of the biggest and most frequented clubs in the city centre. Known for its vibrant atmosphere,

Level boasts LED walls, a spacious courtyard area, and regularly hosts house and dance DJ nights.

Photo: Pressmaster / Shutterstock.com

Address: 18-20 Fleet Street, Liverpool

Opening hours: Sun-Thu 10pm-3am, Fri & Sat 10:30pm-4am

Phone: +44 151 351 6709

Internet: www.levelnightclub.co.uk

Email: [info@levelnightclub.co.uk](mailto:info@levelnightclub.co.uk)

## SHOPPING



Annie Williams/cc0/Unsplash

Immerse yourself in the vibrant shopping scene of Liverpool, where a plethora of shops awaits. Williamson Square, located in the heart of the city, is home to a variety of shops, while hidden side streets house unique boutiques and one-of-a-kind establishments exclusive to Liverpool.

Liverpudlians have a keen sense of style and a penchant for brand names, making it no surprise that high-end shops have a strong presence in the city. For a comprehensive shopping experience, Clayton Square and St. Johns shopping centres are worth exploring. Just outside Liverpool, Cheshire Oaks stands as one of Europe's largest designer outlets, offering an unrivalled selection.

The trendy shops at the Royal Albert Dock cater to diverse tastes, featuring clothing stores and even furniture shops. If you're seeking something different, a visit to Chinatown is a must. There, you'll find a bustling Chinese market every Sunday, offering an array of goods ranging from cooking pots to fresh meat sausages.

### Liverpool ONE



Liverpool ONE is a vibrant open-air complex featuring around 170 shops, plus an array of restaurants, bars, a cinema, and even mini-golf. Whether you're searching for fashion, entertainment, or delectable dining experiences, this expansive complex will surely fulfil your desires.

Photo: [shattha pilabut/Pexels](#)

Address: 5 Wall Street, Liverpool

Opening hours: Mon-Fri 10am-8pm, Sat 10am-7pm, Sun 11am-5pm

Phone: +44 151 232 3100

Internet: [www.liverpool-one.com](http://www.liverpool-one.com)

Email: [info@liverpool-one.com](mailto:info@liverpool-one.com)

### St Johns Shopping Centre



St John's Shopping Centre is Liverpool's largest indoor shopping destination housing over 100 shops — from local brands to household names —, plus a variety of eateries.

Photo: [VGstockstudio / Shutterstock.com](#)

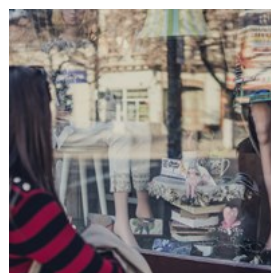
Address: 127 Saint George's Place, Liverpool

Opening hours: Mon-Wed 9am-6pm, Thu 9am-7pm, Fri & Sat 9am-6pm, Sun 11am-5pm

Phone: +44 151 708 8948

Internet: [stjohns-shopping.co.uk](http://stjohns-shopping.co.uk)

### Metquarter



Metquarter is Liverpool's premier shopping and leisure destination boasting an impressive array of designer fashion brand stores, lifestyle shops, restaurants, cafés, and a cinema.



Photo: George Bakos/cc0/Unsplash

Address: 35 Whitechapel, Liverpool

Opening hours: Mon-Wed 9:30am-6pm, Thu 9:30am-7pm,  
Fri & Sat 9:30am-6pm, Sun 11am-5pm

Phone: +44 151 224 2390

Internet: metquarter.com

Email: admin@metquarter.co.uk

### Clayton Square Shopping Centre



An iconic landmark in the heart of Liverpool's city centre, Clayton Square Shopping Centre is a bustling mall adorned with a domed glass

ceiling, which gets even more beautiful at night when illuminated. It houses high-street fashion, beauty and homeware shops, and it's also a very popular place to stop by for coffee.

Photo: nd3000 / Shutterstock.com

Address: Great Charlotte Street, Liverpool

Opening hours: Mon-Sat 8:15am-7pm, Sun 10am-5pm

Phone: +44 151 708 8503

Internet: claytonsquare.co.uk

### The Beatles Shop



All Beatles fans should look this way. The Beatles Shop can be found close to the Royal Albert Dock right in the Cavern Quarter. Indulge your

passion for the legendary band as you peruse through a remarkable collection that captures the essence of their iconic music and legacy — from souvenirs to posters, jewellery to books, this shop has got it all.

Photo: Andrea Turner/Pexels

Address: 31 Mathew Street, Liverpool

Opening hours: Mon-Sat 9:30am-5:30pm, Sun  
10:30am-4:30pm

### Designer Outlet Cheshire Oaks



Conveniently situated near Chester, between Manchester and Liverpool, Cheshire Oaks is a picturesque village-style outlet

offering unbeatable discounts on designer and high-street fashion brands. Boasting an impressive array of over 140 shops, cafés, and restaurants, this iconic destination reigns as the largest designer outlet in the UK.

Photo: Creative Lab / Shutterstock.com

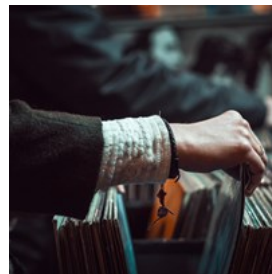
Address: Kinsey Road, Wirral

Opening hours: Mon-Fri 10am-8pm, Sat 9am-9pm, Sun  
10am-6pm

Phone: +44 151 348 5600

Internet: [www.mcarthurglen.com/en/outlets/uk/designer-outlet-cheshire-oaks/](http://www.mcarthurglen.com/en/outlets/uk/designer-outlet-cheshire-oaks/)

### Bold Street



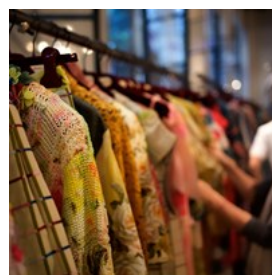
For a delightful blend of funky fashion and vinyl treasures, look no further than the vibrant Bold Street in the heart of Liverpool. This

intellectual hub is a haven for those seeking unique clothing and an eclectic collection of records.

Photo: StockSnap/cc0/Pixabay

Address: Bold Street, Ropewalks Area, Liverpool

### Cricket Fashion



Located in the Metquarter Shopping Centre, Cricket Fashion is a legendary upscale boutique catering to women's fashion

connoisseurs. This renowned destination

showcases an exquisite collection of designer labels, spanning clothing, handbags, shoes, and accessories.

Photo: Paolo Chiabrando/cc0/Unsplash

Address: Metquarter, Units 23 & 47, Liverpool

Opening hours: Mon-Sat 10am-5:30pm, Sun noon-4pm

Phone: +44 151 227 4645

Internet: [www.instagram.com/cricketfashion](https://www.instagram.com/cricketfashion)

## TOURIST INFORMATION



Marcel Eberle/cc0/Unsplash

### Passport / Visa



Citizens of the European Union member-states, Norway, Liechtenstein, Iceland, Switzerland, and Overseas Countries and Territories (OCT) only

require a valid passport to enter the UK.

Residents of a further 10 countries do not require entry visas for stays under 6 months: the USA, Canada, Australia, New Zealand, Japan, Singapore, South Korea, South Africa, Hong Kong, and Malaysia. Nationals of some further countries do not require a visa but need to hold an entry certificate. Use the UK Government website to check for specific requirements.

Photo: ConvertKit/cc0/Unsplash

Internet: [www.gov.uk/check-uk-visa](https://www.gov.uk/check-uk-visa)

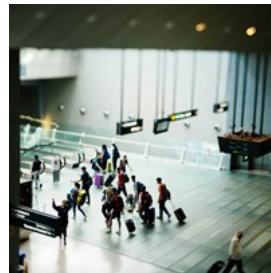
### Best Time to Visit



The peak season for visiting Liverpool is late spring and summer, which is when you will be able to take advantage of the warmest weather (up to 20°C). Earlier in spring or the first weeks of autumn are good alternatives if you want to find fewer crowds, but still decent weather. Being a seaside city, Liverpool has a maritime climate, which means summers are warm and winters are not extremely cold. However, the weather can be unpredictable — make sure you take a look at the forecast before packing.

Photo: Laurie Byrne/cc0/Unsplash

### Liverpool John Lennon Airport (LPL)



The Liverpool John Lennon Airport (LPL) is situated approximately 7.5 miles southeast of the heart of the city. There are multiple

transportation options available to travel between the airport and the city centre, including buses, trains, taxis, or private cars.

For bus and train services to and from Liverpool John Lennon Airport, you can find relevant information on Merseytravel's website.

National Express operates various services connecting Liverpool to different locations. Tickets can be used for Arriva bus services that run to and from the airport, including the convenient 500 Airport Express bus service, as well as the 80A, 82A, and 86A bus services that also serve the airport. These buses can be accessed via the Liverpool One bus station.

Another option is to take a taxi, which typically takes around 20 minutes to reach the city centre.

Photo: Chuttersnap/unsplash

Address: Liverpool John Lennon Airport, Liverpool

Internet: [www.liverpoolairport.com](http://www.liverpoolairport.com)

### Public Transport



Many of the city's main attractions are within easy reach from the town centre, so you might want to consider bringing a comfortable pair of shoes

and exploring them on foot. However, if you prefer public transportation, you'll find frequent service throughout the day, and a limited number of bus services operating during the night. Liverpool has two bus stations situated on Roe Street and Paradise Street, both in close proximity to the town centre. There is an underground system that operates between the city's four main train stations: Lime Street, Central Station, James Street, and Moorfields.

Photo: Ant Rozetsky/cc0/Unsplash

Internet: [www.merseytravel.gov.uk](http://www.merseytravel.gov.uk)

### Taxi



There are many taxi ranks throughout the city, including ranks at all the major train and bus stations. They can also be hailed anywhere on the

street.

One Call Taxis

+44 151 546 5555

ComCab

+44 151 298 2222

Photo: the blowup/cc0/Unsplash

### Post Office



Look for red signs and red mailboxes. Liverpool's main post office is located at 83-85 London Road.

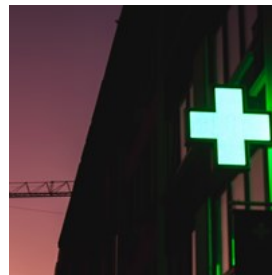
Photo: Sonia Kardash/unsplash

Opening hours: Mon-Fri 9am-5:30pm, Sat 9am-1pm

Phone: +44 151 207 5931

Internet: [www.postoffice.co.uk](http://www.postoffice.co.uk)

### Pharmacy



Some of the most popular pharmacy chains in Liverpool are Boots, Superdrug, LloydsPharmacy, and Well Pharmacy.

Photo: Serkan Yildiz/cc0/Unsplash

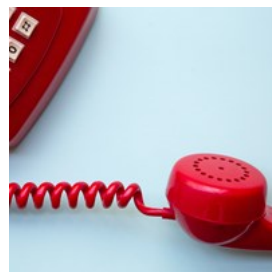
Address: Boots, Clayton Square Shopping Centre, Liverpool

Opening hours: Mon-Sat 8:15am-7pm, Sun 11am-5pm

Phone: +44 151 709 4711

Internet: [www.boots.com](http://www.boots.com)

### Telephone



Country code: +44 Area code: 151

Photo: Miryam León/cc0/Unsplash



## Electricity



The United Kingdom uses the Type G electric plug, which is one with three rectangular pins in a triangular pattern. And it operates on a 230V

supply voltage and 50Hz.

Photo: Idyshah/pixabay

## Population

500,500 (2022)

## Currency

British pound, £1 = 100 pence

## Opening hours

Shops are open 9:30am–8pm in most places and may have reduced opening hours on Sundays.

## Newspapers

Liverpool Echo — [www.liverpoolecho.co.uk](http://www.liverpoolecho.co.uk)

Liverpool Express — [liverpoolexpress.co.uk](http://liverpoolexpress.co.uk)

The Times (National newspaper) — [www.thetimes.co.uk](http://www.thetimes.co.uk)

## Emergency numbers

Emergency: 999 (Police, Fire and Ambulance)

Non-emergency: 101

## Tourist information

Tourist Information Centre at Liverpool ONE

ONE, 5 Wall Street, Liverpool

Open Mon–Fri 9:30am–5:30pm, Sun 10:30am–5pm







Addison Street	B3	Erskin Street	D3	Marybone	B3
Anderson Street	C1	Everton Brow	C2 D2	Mere Lane	D1
Arrad Street	D4	Everton Road	D2	Moorefields	B3
Ashton Street	D3	Falkner Street	D4	Moss Street	D3
Athol Street	B1 C1	Fewick Street	B3 B4	Mount Pleasant	C4 D4
Bangor Street	B1	Fleet Street	C4	Mulberry Street	D4
Barmouth Way	B1	Ford Street	B2	Myrtle Street	D4
Bath Street	A3	Fox Street	C2	N John Street	B3 B4
Beacon Lane	D1	Freemason's Row	B2 B3	Naylor Street	B2
Bedford Street South	D4	Galtney Street	A2	Netherfield Road North	C1
Bentinck Street	A1 B1	Gem Street	B1	Netherfield Road South	C2 D2
Berry Street	C4	Gilbert Street	B4 C4	New Islington	C3
Bixteth Street	B3	Gildart Street	C3 D3	Northumberland Terrace	C1 D1
Blackstock Street	B2	Gradwell Street	B4 C4	Oil Street	A2
Blackstone Boundary Street	B1 C1	Great Crosshall Street	B3	Old Hall Street	A3 B3
Blenheim Street	B2	Great Homer Street	C1 C2	Orry Street	C1
Bold Street	C4	Great Howard Street	A1 A2	Oxford Street	D4
Bostock Street	C1	Great Mersey Street	B1 C1	Paradise Street	B4
Breck Road	D2	Gregson Street	D2	Park Lane	B4
Breckfield Road	D1	Grenville Street South	C4	Parker Street	C3 C4
Brownlow Hill	C4 D4	Grosvenor Street	C2	Parr Street	C4
Brownlow Street	D3	Grove Street	D4	Paul Street	B2
Brunswick Road	D3	Haigh Street	D2	Pembroke Place	D3
Burlington Street	B2 C2	Hamilton Road	D1	Pilgrim Street	C4
Canada Boulevard	A3 A4	Hanover Street	B4	Prescot Street	D3
Canterbury Street	C2 C3	Hardman Street	C4 D4	Prince Edwin Street	C2
Carver Street	D3	Hatton Gardens	B3	Princes Parade	A3
Castle Street	B3	Herschell Street	D1	Pumpfields Road	B2
Chapel Gardens	C1	Heyworth Street	D1 D2	Queen Square	B3 C3
Chapel Street	A3 B3	Hunter Street	C3	Queens Road	D2
Christian Street	C2 C3	Islington	C3 D3	Rachel Street	C2
Church Street	B4 C4	James Street	B4	Regent Road	A1
Churchill Way North	B3 C3	Juvenal Street	C2	Regent Street	A2
Collage Street	D3	Kempton Street	C3	Renshaw Street	C4
Commercial Road	B1	Kingsway	B2	Richmond Row	C2
Comus Street	C2	Kirkdale Road	C1	Richmond Street	B3 C3
Conway Street	C1	Langrove Street	C1 C2	Robson Street	D1
Copperas Hill	C3	Latimer Street	B1	Rokeby Street	C2
Cotton Street	A2	Leeds Street	B3	Roscoe Street	C4
Cranmer Street	B1 C1	Lightbody Street	A1 B1	Roscommon Street	C2
Crown Street	D3 D4	Lime Street	C3	Rose Place	C2
Dale Street	B3	Limekiln Lane	B2 C2	Russel Street	C3
Daulby Street	D3	Liverpool Museum	C3	Salisbury Road	D1
Devon Street	D3	London Road	C3 D3	Salisbury Street	C2 D2
Dryden Street	C2	Lord Nelson Street	C3	Scotland Road	C1 C2
Duke Street	B4 C4	Lord Street	B4	Severn Street	D1
East Street	B3	Love Lane	B2	Shadwell Street	B1
Eldonian Way	B2	Mann Island	B4	Shaw Street	D2
Errington Street	A1 B1	Margaret Street	D2	Shaws Alley	B4

Silvester Street	B2	Sterling Way	C1	Victoria Street	B3
Skelhorne Street	C3	Strand Street	B4	Vulcan Street	A2
Slater Street	C4	Suffolk Street	C4	Wakefield Harker Street	C3
Soho Street	C2 C3	Summer Seat	B2	Walter Street	A1
Spencer Street	D2	Titchfield Street	B2	Wapping	B4
St Anne Street	C2 C3	Union Street	B3	Water Street	B3
St Dansie Street	C3 D3	Upper Duke Street	C4	Waterloo Road	A2
St Domingo Grove	D1	Upper Frederick Street	B4 C4	Whitechapel	B3
St Domingo Road	C1 D1	Vauxhall Road	B1 B2 B3	Wilbraham Street	C2
St Hope Street	D4	Vernon Street	B3	William Henry Street	C2 D2
St Luton Street	A1 B1	Verona Street	D1	York Terrace	C1
Stanley Street	B3				