



# Berlin

Photo: Scholvien/Visit Berlin



Adenis/Visit Berlin



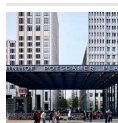
Scholvien/Visit Berlin



Dagmar Schwelle/Visit Berlin

Experience Berlin, the heart of Germany's transformation since the fall of the Berlin Wall. The city is a hub for cultural innovation, pulsating nightlife and eclectic hipster charm. Berlin stands as a youthful, dynamic metropolis embracing global influences, while setting trends in architecture, art and fashion. The city's skyline is a mix of sleek modernity and nostalgic nods to the 90s. As young families enjoy leisurely brunches, the nightlife crowd cycles home in the early hours. Immerse yourself in its rich tapestry — feel the Berlin vibe and savour the local cuisine.

## Featured



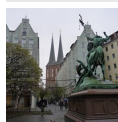
### Potsdamer Platz

Looking at the vast pavilion roof of the Sony Center and the many high-rise ...



### Museum Island

The five historical museum buildings on Museum Island have been part of UNES...



### Nikolai Quarter

The Nikolai Quarter is a peculiar reconstruction of the way Berlin used to b...



### Berlin City Hop-on Hop-off...

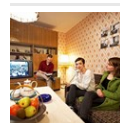
Berlin is a vast city with not one, but several centres that come in their d...



### Memorial to the Murdered J...

Not far from the Brandenburg Gate you'll the Memorial to the Murdered Jews o...

## Top 5



### DDR Museum

The DDR Museum is an interactive museum that takes you on a journey into the...



### Brandenburg Gate

It's Berlin's most famous landmark and became the symbol of overcoming the d...



### East Side Gallery

An East German Trabant car, which appears to be breaking through the concret...



### Berlin Highlights Bike Tour

Experience Berlin like a local and cover all the must-see attractions in jus...



### Boat Cruise on the River Spree

One of the best ways to see any city is from the water — and Berlin is no ex...

## THE CITY



Scholvien/Visit Berlin

Berlin defies categorization, and it's this very quality that sets it apart. Once a symbol of the Cold War and a divided Germany, this former 'Walled-in City' has transformed into a year-round travel magnet.

For nearly three decades, the Berlin Wall split one of Europe's most beloved cities. Its fall on 9th November 1989 marked a pivotal moment in history. For those keen to explore the Wall's remnants, numerous options await. The Bernauer Straße Memorial, with its original sections of the death strip, vividly recalls the divide. Other significant sites include the East Side Gallery, Checkpoint Charlie, and the Wall Museum.

Today, the appeal of Berlin is its fascinating mixture of history and zeitgeist, offering diverse attractions in art, culture, music, entertainment and countless shopping possibilities. The modern hotel landscape, an incredibly diverse gastronomy and unbeatably favourable prices will make you want to return again and again. The city's vibrant and flourishing creative scene combines with the fire-hot music and club culture to put a unique stamp on the unmistakable character of this metropolis.

On your first visit, iconic landmarks are a

must-see. But it's often on a second visit that Berlin's true essence emerges. Each of its 12 districts has its own charm: Mitte is a fashion hub, Neukölln has evolved into a hipster haven, Prenzlauer Berg is known for its family-friendly vibe, Kreuzberg boasts a multicultural atmosphere, and Friedrichshain is the heart of alternative living.

## DO & SEE



Scholvien/Visit Berlin

Whether you see the sights of Berlin by coach, steamer, bicycle or on foot — you'll pass a lot of famous buildings and memorials. We'll tell you which ones you really can't afford to miss!

### DDR Museum



The DDR Museum is an interactive museum that takes you on a journey into the socialist past. You'll see countless iconic objects from the former East Germany, will take a simulated ride in a Trabi, dance the Lipsi and rummage around in an authentic apartment. It's an essential Berlin history trip.

Photo: Visit Berlin

Address: Karl-Liebknecht-Straße 1, Berlin

Opening hours: Daily 9am–9pm

Phone: +49 30 84 71 23 730

Internet: [www.ddd-museum.de/en](http://www.ddd-museum.de/en)



Email: [post@ddr-museum.de](mailto:post@ddr-museum.de)

More Info: Located in CityQuartier DomAquaree

## Brandenburg Gate



It's Berlin's most famous landmark and became the symbol of overcoming the division of Germany.

From an architectural perspective, the

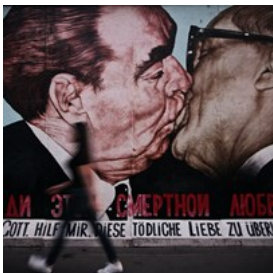
sandstone structure, built by Carl Gotthard Langhans, is one of the most magnificent examples of German classicism. Nowadays the Gate serves as a backdrop for festivals, big sporting events or New Year's Eve parties.

Photo: [Claudio Schwarz/unsplash.com](#)

Address: Brandenburger Tor, Pariser Platz, Berlin-Mitte

Public Transport: U Brandenburger Tor

## East Side Gallery



An East German Trabant car, which appears to be breaking through the concrete. Honecker and Breschnew locked in a kiss of brotherly, socialist

love. With the East Side Gallery, a segment of the Berlin Wall has been turned into the longest open air gallery in the world.

The open-air East Side Gallery is located along the banks of the river Spree in Friedrichshain. At 1,316 metres, it's also the longest segment of the Berlin Wall that is still standing. Right after the fall of the Wall, this stretch was painted by 118 artists from 21 different countries. Using various techniques, the artists commented on the political events that took place in 1989 and 1990 in over 100 works of art found on the eastern side of the wall.

Photo: [Jeison Higueta/unsplash.com](#)

Address: East-Side-Gallery, Mühlenstraße 1, Berlin-Friedrichshain

Public Transport: S Ostbahnhof, Warschauer Straße

Phone: +49 30 21 30 85 123

Internet: [www.stiftung-berliner-mauer.de/en/east-side-gallery](http://www.stiftung-berliner-mauer.de/en/east-side-gallery)

Email: [info@eastsidegallery-berlin.com](mailto:info@eastsidegallery-berlin.com)

## Berlin Highlights Bike Tour



Experience Berlin like a local and cover all the must-see attractions in just half a day with this highlights tour on a bicycle — ideal for

cycling enthusiasts with limited time in the city.

You'll be introduced to iconic landmarks such as the Reichstag, Checkpoint Charlie and the Brandenburg Gate, among others. You don't have to worry about navigation, as your knowledgeable guides will lead you through a carefully planned route while sharing engaging stories about Berlin's culture and history.

Photo: [Michał Parzuchowski/unsplash.com](#)

Internet: [www.fattiretours.com/berlin/tours-activities](http://www.fattiretours.com/berlin/tours-activities)

## Boat Cruise on the River Spree



One of the best ways to see any city is from the water — and Berlin is no exception. Enjoy a boat cruise along the River Spree and catch a

glimpse of many city attractions, including the government district, Bellevue Palace, Berlin Cathedral, and Museum Island in just a couple of hours. Perfect plan for when your legs are already tired but you are still in the mood for adventure. Choice of morning or afternoon departure.

Photo: [Stern und Kreis/Visit Berlin](#)

Address: Stern und Kreisschiffahrt GmbH, Anleger  
Friedrichstraße/Reichstagsufer, Berlin  
Phone: +49 30 53 63 600  
Internet:  
[www.sternundkreis.de/en/Startseite/en/Trips/K102.htm](http://www.sternundkreis.de/en/Startseite/en/Trips/K102.htm)  
Email: [info@sternundkreis.de](mailto:info@sternundkreis.de)

### Museum Island

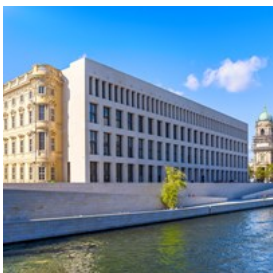


The five historical museum buildings on Museum Island have been part of UNESCO world heritage since 1999 and represent a collection

that's unique in the world. Each museum building on the island was designed by famous architects of their time. Museum Island is home to collections in the Altes Museum (Old Museum), the Alte Nationalgalerie (Old National Gallery), the Bode Museum, and the Neues Museum (New Museum). The Pergamon Museum is closed for renovation until 2037 or 2043. The exhibitions cover prehistoric times, ancient history and 19th century art.

Photo: Santiago Flores/unsplash.com  
Address: Museumsinsel Berlin, Am Lustgarten 1, Berlin-Mitte  
Public Transport: S U Friedrichstraße, S Hackescher Markt  
Opening hours: Tue-Sun 10am-6pm. On Thu until 8pm  
Internet: [www.smb.museum/en/museums-institutions/museumsinsel-berlin/home](http://www.smb.museum/en/museums-institutions/museumsinsel-berlin/home)

### Berlin Palace Humboldt Forum



The Berlin Palace on the Museum Island in the Mitte area of Berlin, was the main royal residence from 1443 to 1918. It was badly damaged during

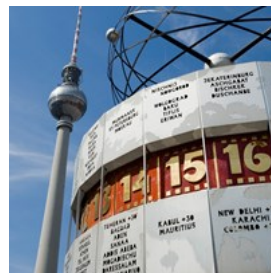
the Allied bombing in World War II, and was demolished by the East German authorities in 1950 to build the modernist East German Palace of the Republic. After German reunification and

several years of debate, the Palace of the Republic was itself demolished and the Berlin Palace was constructed anew to house the Humboldt Forum museum.

Today, the Humboldt Forum museum houses a rich collection of Asian art and craft objects dating from the 5th millennium BC through to the present day. Explore East Asian paintings and prints, lacquer objects and ceramics, the art and culture of the Silk Road, South Asian and South-East Asian art, Hindu and Buddhist sculptures and much more.

Photo: frank\_peters/shutterstock  
Address: Berliner Schloss, Museum Island, Berlin-Mitte  
Opening hours: Mon & Wed-Sun 10:30am-6:30pm, Tue closed  
Phone: +49 30 99 21 18 989  
Internet: [www.humboldtforum.org/en](http://www.humboldtforum.org/en)

### Alexanderplatz & Television Tower



Once the heart of the former East Berlin, Alexanderplatz is today the largest inner-city square in Germany and has developed into a

popular shopping attraction. The view from the Television Tower, its height of 368 metres making it the tallest tower in Germany, is absolutely fantastic. A perfect 360° all-round view is provided by the revolving restaurant Sphere and Bar 203, making a full turn twice an hour.

Photo: Scholvien/Visit Berlin  
Address: Alexanderplatz und Berliner Fernsehturm, Panoramastraße 1A, Berlin-Mitte  
Public Transport: S U Alexanderplatz  
Opening hours: The observation deck: daily 9am-10pm  
Internet: [tv-turm.de/en](http://tv-turm.de/en)  
Email: [info@tv-turm.de](mailto:info@tv-turm.de)

### Friedrichstadt-Palast Berlin



Friedrichstadt-Palast Berlin, often referred to as Palast Berlin, is a stunning architectural marvel that hosts Europe's most

spectacular entertainment. With over 500 bold and lavish costumes designed by Jean Paul Gaultier, the dazzling performances evoke a range of emotions from hope to happiness, celebrating the joy of life. The New York Times hails it as a 'Must-See in Berlin.' The shows are also accessible to international visitors, with no German language skills required.

Photo: Visit Berlin

Address: Friedrichstraße 107, Berlin-Mitte

Public Transport: Oranienburger Tor (U6), S-Bahn Friedrichstraße (S1, S2, S25, S5, S7, S75 and local trains), S-Bahn Oranienburger Straße (S1, S2, S25), Bus 147 and 142, Tram M1, M5 and 12.

Opening hours: Evening show 7:30pm, matinee 3:30pm. Mon closed

Phone: +49 30 23 26 23 26

Internet: [www.palast.berlin/en](http://www.palast.berlin/en)

Email: [happiness@palast.berlin](mailto:happiness@palast.berlin)

### Panoramapunkt



Experience Berlin's best views from the fastest elevator in Europe, which whisks you to a height of 100 metres in just 20 seconds. At the top, a terrace offers breathtaking vistas of the German capital's iconic landmarks and historic sites. The Brandenburg Gate and many other attractions are within sight. Enjoy the panoramic view, explore an exhibition, and relax in a stylish café.

Photo: Visit Berlin

Address: Kollhoff Tower, Potsdamer Platz 1, Berlin

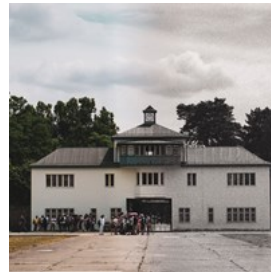
Opening hours: Summer: daily 11am-7pm. Winter: daily

11am-6pm

Phone: +49 30 25 93 70 80

Internet: [panoramapunkt.de/en](http://panoramapunkt.de/en)

### Sachsenhausen-Oranienburg Memorial



Berlin is great for parties and long walks with friends, but it's also a city marked by profound historical events. A visit to the

Sachsenhausen-Oranienburg Nazi concentration camp offers a sobering perspective on this darker chapter of history. Just a half-day trip from the city, the camp saw over 200,000 prisoners pass through its gates from 1936 to the end of the Third Reich in May 1945. Primarily housing political prisoners during World War II, the camp's history is a stark reminder of the past.

Photo: Miguel Ángel Díaz Magister/unsplash

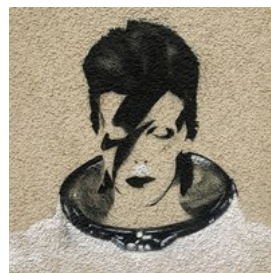
Address: Gedenkstätte und Museum Sachsenhausen, Straße der Nationen 22, Oranienburg

Phone: +49 33 01 200 200

Internet: [www.sachsenhausen-sbg.de/en](http://www.sachsenhausen-sbg.de/en)

More Info: The memorial is about 45 minutes away from the city centre

### Get Closer to David Bowie



Back in the 1970s, Berlin was the home of the legendary David Bowie. Together with a specialist guide, you'll navigate the city on foot and by public

transport, discovering the Berlin that inspired David Bowie's seminal Berlin Trilogy. You'll see Hansa Studios, where 'Heroes' and 'Low' were recorded. Stop by 155 Hauptstrasse, where Bowie and Iggy Pop lived and created together in 1977. This tour is an absolute must for all the fans of Ziggy Stardust.



Photo: Felipe Tofani/cc by-sa 2.0/Flickr (cropped)(image cropped)

Address: Tours depart from Ständige Vertretung cafe, Schiffbauerdamm 8, Berlin-Mitte

Internet: [www.insightcities.com/tour/david-bowie-and-the-end-of-the-world](http://www.insightcities.com/tour/david-bowie-and-the-end-of-the-world)

### Memorial to the Murdered Jews of Europe



Not far from the Brandenburg Gate you'll find the Memorial to the Murdered Jews of Europe, also known as the Holocaust Memorial.

It is a grid of stelae (2,711 concrete slabs) on a sloping field accessible from all sides. It serves as a central place of remembrance and admonition and is supplemented by an underground information centre, containing the names of all known victims and details on the places of horror.

Photo: Giulia Gasperini/unsplash

Address: Denkmal für die ermordeten Juden Europas, Cora-Berliner-Straße 1, Berlin-Tiergarten

Public Transport: S U Potsdamer Platz, Brandenburger Tor

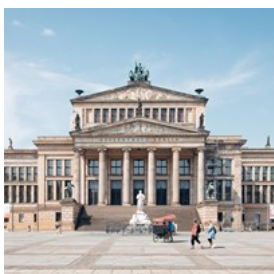
Opening hours: Always open

Phone: +49 30 263 94 30

Internet: [www.stiftung-denkmal.de/en](http://www.stiftung-denkmal.de/en)

More Info: You are meant to walk between the slabs, not climb them

### Gendarmenmarkt



Gendarmenmarkt square is a beautiful example of an architectural ensemble which includes both the French and the German cathedral, as well as the

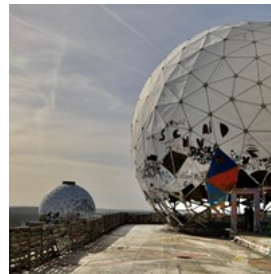
Concert House. Many Berliners believe that the Gendarmenmarkt is the most beautiful place in Germany and indeed in all of Europe. A must-see for all visitors to Berlin.

Photo: Samuel Svec/unsplash

Address: Gendarmenmarkt, Berlin-Mitte

Public Transport: U Stadtmitte, Französische Straße

### Teufelsberg — Field Station Berlin



Teufelsberg, an artificial peak in Grunewald, was formed from the rubble of World War II. It provides a sweeping 360° view of the city. During the Cold

War, this location served as a key surveillance site for British and American intelligence agencies. Nowadays, it's a popular spot, especially on weekends, when guided tours offer a glimpse into its past, enhanced by striking street art galleries.

Photo: Gero Camp/unsplash

Address: Teufelsseechaussee, Berlin

Internet: [www.berlinsightout.de/englisch.htm](http://www.berlinsightout.de/englisch.htm)

More Info: Visiting the Station is possible only with public or private guided tours.

### Berlin City Hop-on Hop-off Tour



Berlin is a vast city with not one, but several centres that come in their distinct and varied flavours of cool. The fastest and most time

efficient way to hit all the main attractions is to get on one of those hop-on hop-off buses. You can get a 24- or 48-hour ticket, as well as an option to upgrade to a river cruise boat. Buses run every 10-15 minutes. Of course, you get audio commentary in multiple languages, plus a kids' channel.

Photo: Berlin City Tour/Visit Berlin

Opening hours: The buses run 10am-6pm

Phone: +49 30 880 41 90

Internet: [convention.visitberlin.de/en/meetingguideberlin/servicepartner/bex-sightseeing-berlin-city-tour](http://convention.visitberlin.de/en/meetingguideberlin/servicepartner/bex-sightseeing-berlin-city-tour)

Email: [sightseeing@bex.de](mailto:sightseeing@bex.de)

Special offer with Berlin WelcomeCard. More info in the City Card-section.

### Kaiser Wilhelm Memorial Church



The protestant Kaiser Wilhelm Memorial Church is a beacon of peace and reconciliation. It stands for the will of the Berliners to rebuild their city during the period after the war. Most of the original structure was destroyed by a British bombing raid in World War II — all that remained was its gaping, ruined tower. The first plans to rebuild the church would have removed the crumbling tower completely. However, Berliners protested the demolition of the 70-metre belfry and the new modernist church buildings are centred around this piece of history.

Photo: Scholvien/Visit Berlin

Address: Kaiser-Wilhelm-Gedächtnis-Kirche, Breitscheidplatz, Berlin-Charlottenburg

Public Transport: S U Zoologischer Garten, U Kurfürstendamm

Opening hours: Daily 10am–6pm

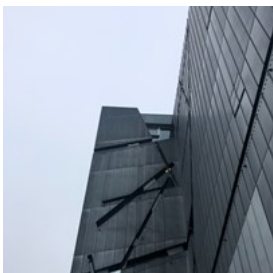
Phone: +49 30 218 50 23

Internet: [www.gedaechtniskirche-berlin.de](http://www.gedaechtniskirche-berlin.de)

Email: [info@gedaechtniskirche-berlin.de](mailto:info@gedaechtniskirche-berlin.de)

More Info: Because of the distinctive geometrical shapes of the new buildings, locals nicknamed the church "Lippenstift und Puderdose" (the lipstick and the powder box)

### Jewish Museum Berlin



The Jewish Museum Berlin is housed in the impressive building designed by Daniel Libeskind. The zinc-coated zig-zag

building is one of Berlin's major landmarks. The permanent exhibition traces the high and low

points of German-Jewish history from the end of the Roman Age to the present day. The museum is a must for architecture nerds, history buffs and anyone who wants to understand the enormous intellectual, economic and cultural contribution made by the Jewish citizens of Berlin.

Photo: Lovie Tey/unsplash

Address: Jüdisches Museum Berlin, Lindenstraße 9-14, Berlin-Kreuzberg

Public Transport: U Hallesches Tor, Kochstraße

Opening hours: Daily 10am–6pm

Phone: +49 30 25 99 33 00

Tickets: The core exhibition is free. Temporary exhibitions cost extra.

Internet: [www.jmberlin.de/en](http://www.jmberlin.de/en)

Email: [info@jmberlin.de](mailto:info@jmberlin.de)

### Reichstag



The Reichstag, with its iconic glass dome, is home to the Bundestag, Germany's lower house of parliament. In the 1990s, British architect Sir

Norman Foster reimaged the building, blending its historical grandeur with a modern, spacious design. The accessible glass cupola offers stunning views of the city and a unique perspective on German politics. While entry to the cupola and roof terrace is free, advance booking is crucial because of the Reichstag's popularity.

To learn more about German political system and the daily life of the Parliament, you can book a 90-minute guided tour. Guided tours of the Reichstag Building are held in the weeks when Parliament is not sitting.

Photo: Ricardo Gomez Angel/unsplash

Address: Platz der Republik 1, Berlin-Tiergarten

Public Transport: U Bundestag  
Phone: +49 30 22 73 21 52  
Internet: [www.bundestag.de/en/visittheBundestag/dome/registration-245686](http://www.bundestag.de/en/visittheBundestag/dome/registration-245686)

### Wall Museum — Checkpoint Charlie



Checkpoint Charlie, the most famous of the inner-German border crossing points and a name known the world over, was where Allied

border guards would register members of the American, English and French Armed Forces (and their families) before they visited East Berlin. The "Wall Museum – Museum House at Checkpoint Charlie" is right next to this major tourist spot. The museum displays an incredible number of the original means and tools that people used in their escape out of the GDR: from the hot-air balloon to a mini-submarine, plus plenty of real and fake travel documents.

Photo: Santiago Flores/unsplash  
Address: Mauermuseum, Friedrichstraße 43-45, Berlin-Kreuzberg  
Public Transport: U Kochstraße  
Opening hours: Daily 10am-8pm  
Phone: +49 30 253 72 50  
Internet: [www.mauermuseum.de/en/visit](http://www.mauermuseum.de/en/visit)  
Email: [info@mauermuseum.de](mailto:info@mauermuseum.de)

### Potsdamer Platz



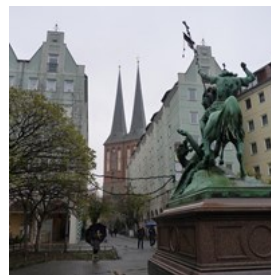
Looking at the vast pavilion roof of the Sony Center and the many high-rise buildings around it, it's difficult to imagine that Potsdamer

Platz for a long time was in the death strip of the Berlin Wall and was nothing but a desolate wasteland. These days, Potsdamer Platz is a major public transportation hub, as well as a

centre for business, entertainment, culture and shopping. Here you'll also find an IMAX cinema and the German Film Archive — Museum of Film and Television in Berlin. Perfect destination after taking a mandatory pic next to the Brandenburg Gate.

Photo: Massimo Virgilio/unsplash  
Address: Potsdamer Platz, Berlin-Tiergarten  
Public Transport: S U Potsdamer Platz  
Internet: [www.potsdamerplatz.de/en](http://www.potsdamerplatz.de/en)

### Nikolai Quarter



The Nikolai Quarter is a peculiar reconstruction of the way Berlin used to be before its destruction in World War II. The area was restored in the 1980s

in preparation for Berlin's big 750th birthday. Stroll around the idiosyncratic mixture of reconstructed historic houses and concrete slab Plattenbau blocks, and discover some of the most famous traditional German restaurants and bars.

The Nikolaikirche (St Nicholas's Church), with its striking double spire, is the heart of the quarter. The Ephraim Palace, with the curved Rococo façade, is a masterpiece of 18th century Berlin palace architecture. Don't miss the Baroque architecture of the Knoblauchhaus, built in 1760.

Photo: Jorge CG/cc by 2.0/Flickr(image cropped)  
Address: Nikolaiviertel, Nikolaikirchplatz, Berlin-Mitte  
Public Transport: S U Alexanderplatz, U Klosterstraße  
Internet: [www.berlin-nikolaiviertel.com](http://www.berlin-nikolaiviertel.com)



## Berlin Wall Memorial



The Berlin Wall Memorial is the central memorial site of Germany's division. Located directly at the former border strip in the Bernauer Straße is a 1.4-kilometre piece of the Berlin Wall with a border strip and watchtower. The Gedenkstätte memorial is the last remaining stretch of the Wall as it existed during the separation era, and it conveys an impression of how the border fortifications really looked.

The Visitor Center and the Documentation Center with a viewing platform are located on the other side of the street that belonged to the western part of the city. The exhibition 'Border Stations and Ghost Stations in Divided Berlin' is shown inside the Nordbahnhof S-Bahn station.

Photo: Markus Spiske/unsplash

Address: Gedenkstätte Berliner Mauer, Bernauer Straße 111, Berlin-Mitte

Public Transport: U Bernauer Straße, S Nordbahnhof

Opening hours: Visitor centre: Tue-Sun 11am-6pm. Memorial

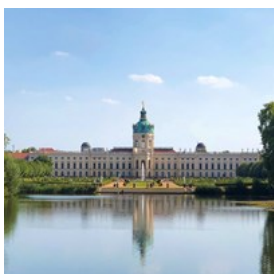
Grounds: daily 8am-10pm

Phone: +49 30 21 30 85 123

Tickets: Free admission. Guided tours cost extra.

Internet: [www.berliner-mauer-gedenkstaette.de/en](http://www.berliner-mauer-gedenkstaette.de/en)

## Charlottenburg Palace



The domed Charlottenburg Palace is one of Berlin's famous landmarks. The lavishly decorated Baroque palace was built around 1695 as

a summer residence for Sophie Charlotte, Electress of Brandenburg and as of 1701, the first Queen in Prussia. Frederick the Great had the New Wing added in the 1740s. The interior contains, amongst others, the famous Porcelain

Collection.

Photo: Dmitry Makeev/unsplash

Address: Schloss Charlottenburg, Spandauer Damm 20-24, Berlin-Charlottenburg

Public Transport: U Sophie-Charlotte-Platz, S Westend, Jungfernheide

Opening hours: April through October: Tue-Sun

10am-5:30pm. November through March: Tue-Sun

10am-4:30pm. Mon closed

Phone: +49 331 969 42 00

Internet: [www.spsg.de/en/home](http://www.spsg.de/en/home)

Email: [info@spsg.de](mailto:info@spsg.de)

## Kulturforum



After Museum Island, the Kulturforum is the second centre of art in Berlin. It is the home not only of the Neue Nationalgalerie (New National Gallery),

the Gemäldegalerie (Picture Gallery), the Kunstgewerbemuseum (Museum of Decorative Arts) and other museums, but also houses the Philharmonie (Philharmonic Hall) and the Staatsbibliothek (National Library).

The New National Gallery was designed by a star architect Mies van der Rohe.

Photo: Eraku/cc by-sa 2.0/Flickr(image cropped)

Address: Matthäikirchplatz 4-6, Berlin-Tiergarten

Public Transport: S U Potsdamer Platz

Opening hours: Depends on the venue, but all museums are closed on Monday

Phone: +49 30 266 42 42 42

Internet: [www.smb.museum/en/museums-institutions/kulturforum/home](http://www.smb.museum/en/museums-institutions/kulturforum/home)

## Computer Games Museum



Berlin boasts the world's first computer games museum, which opened its doors in 1997. Since January 2011, the museum has been

showcasing its new permanent exhibition in the fashionable Friedrichshain district. The exhibition has ingeniously converted the historic interior of the former East Berlin café, Warsaw, into a pixelated gaming landscape. It's the perfect spot to unwind, play some beloved video games, and delve into the history of the gaming industry.

The Computer Games Museum is conveniently located on the Karl-Marx-Allee, the largest European cultural monument.

Photo: Jörg Metzner/Computerspielemuseum/Visit Berlin  
Address: Computerspielemuseum, Karl-Marx-Allee 93a, Berlin-Friedrichshain  
Opening hours: Daily 10am-8pm  
Phone: +49 30 60 98 85 77  
Internet: [www.computerspielemuseum.de](http://www.computerspielemuseum.de)  
Email: [service@computerspielemuseum.de](mailto:service@computerspielemuseum.de)

## Berlin Christmas Markets



The smell of candied apples and toasted almonds drives Berliners out of doors during the cold season into their city's Christmas markets.

With more than 400 stalls at the weekends, the Christmas markets offer sensual concerts, unique handicrafts, and culinary delights from top chefs — the winter magic is in the air at the Gendarmenmarkt. A romantic Christmas market is held in Charlottenburg. The illumination of the castle and the castle park create an enchanting

backdrop. Winter sports enthusiasts head to Winter World in Potsdamer Platz. At the Christmas market, you can go ice skating and sledding on the largest mobile toboggan run in Europe.

If you feel a bit intimidated by the abundance of choice and want to have the smoothest introduction to Berlin's Christmas Markets — book a guided tour with several snacks and mulled wine included!

Photo: [cmophoto.net/unsplash.com](https://cmophoto.net/unsplash.com)

Address: Approx. 60 markets throughout the city

Opening hours: Open in late November and last through December, closing right after 25 December, with a few staying open for New Year's.

Internet: [www.berlin.de/en/christmas-markets](http://www.berlin.de/en/christmas-markets)

## DINING



*Philip Koschel/Visit Berlin*

Berlin caters to every palate and budget, from multi-course menus at Michelin-starred restaurants to boulettes or a doner kebab at local snack bars. The city's culinary scene knows no bounds, offering Australian and French cuisine, exotic Asian dishes, and the iconic Berliner currywurst.

Regional cuisine in Berlin is hearty and delicious, served in cosy traditional pubs. A unique highlight is the all-day breakfast offered by many cafes, perfect for night owls who enjoy a

leisurely start to their day.

In summer, city life spills outdoors, with beach bars along the Spree River becoming hotspots. These are ideal places to relax with a cocktail or savour a Berliner Weisse, a wheat beer mixed with raspberry or woodruff syrup. It's a summer treat you won't want to miss!

### Marooush



Enjoy a royal culinary journey along the Nile in the restaurant with cocktails, Arabian pastries, speciality teas or even a shisha in the lounge. The 'Dinner & Dance' events offer a belly dance show that you can enjoy from your cosy pillows.

Photo: Visit Berlin

Address: Knesebeckstraße 48, Kurfürstendamm, Berlin-Charlottenburg

Opening hours: Daily from 3pm

Phone: +49 30 88 711 83 35

Internet: marooush.de

### Hamlet



The smart and casual Hamlet restaurant with street tables, located close proximity to Kurfürstendamm, invites you to enjoy their

German-French cuisine with an Asian accent. Try their delicious breakfast menu and take advantage of the well-stocked bar in the evening.

Photo: ktryna/unsplash

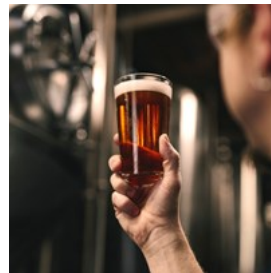
Address: Ludwigkirchstraße 6, Kurfürstendamm, Berlin-Charlottenburg

Opening hours: Daily 8am-11pm

Phone: +49 30 882 13 61

Internet: [www.restaurant-hamlet.de](http://www.restaurant-hamlet.de)

### Brauhaus Südster



Brauhaus Südster (South Star Brewery) combines the lively atmosphere of a tavern, brewery, and restaurant, complemented by an

inviting outdoor beer garden. Choose from a selection of hearty dishes and schnitzels, or opt for a buffet — ideal for larger gatherings. Consider booking a guided tour with the master brewer, who offers not just a taste of various rich hoppy beers but also shares insights into the nuanced distinctions between them. For the schedule of live music events, visit the official website.

Photo: Elevate/unsplash.com

Address: Hasenheide 69, Berlin-Kreuzberg

Opening hours: Mon-Fri from 5pm, Sat from 2pm, Sun closed

Phone: +49 30 69 00 16 24

Internet: [brauhaus-suedstern.de](http://brauhaus-suedstern.de)

### Explore Berlin's Culinary Trends



It's very easy to spend your entire trip in Berlin tasting every imaginable cuisine represented in this cosmopolitan city — but don't miss the chance

to experience the very special dishes that are specific to Berlin itself. Let a local guide introduce you to the capital's classic treats, entertain you with historical facts and tell you about the typical street food, desserts and the iconic Berlin Pilsner.

Photo: Alex Haney/unsplash

Address: Tours depart from Starbucks at Neue Promenade 3, Berlin-Mitte

Phone: +49 173 929 72 90



Internet: [forkandwalktoursberlin.com](https://forkandwalktoursberlin.com)

### Sophieneck



Sophieneck is a cosy restaurant located on the corner of an iconic building not far from the Scheunenviertel, the Hackesche Höfe, and Oranienburger Straße. It offers a diverse menu of fresh, regional German cuisine, complemented by an extensive selection of beers and wines.

Photo: Sophieneck/Visit Berlin

Address: Große Hamburger Straße 37, Berlin-Mitte

Opening hours: Daily noon-late, warm kitchen until 10pm

Phone: +49 30 283 40 65

Internet: [sophieneck-berlin.de/en](https://sophieneck-berlin.de/en)

### Berliner Republik



Enjoy Berlin specialties and classics in an old-school Berlin ambience until early morning in Berliner Republik — a vibrant riverside pub. Choose from 18 kinds of draught beer from all over Germany.

Photo: Die Berliner Republik/Visit Berlin

Address: Schiffbauerdamm 8, Berlin-Mitte

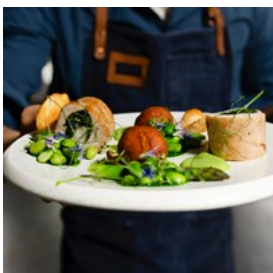
Opening hours: Daily 11am-late

Phone: +49 30 30 87 22 93

Internet: [www.die-berliner-republik.de](https://www.die-berliner-republik.de)

Email: [info@die-berliner-republik.de](mailto:info@die-berliner-republik.de)

### Hugos Restaurant



Michelin-starred chef Thomas Kammeier celebrates the best international cuisine inspired by regional ingredients and authentic

tastes. To top it off, the chic experience includes a panoramic view over Berlin from the height of 14 floors.

Photo: Aarón Blanco Tejedor/unsplash

Address: Budapester Straße 2, Berlin-Charlottenburg

Opening hours: Thu-Sat 6:30pm-midnight

Phone: +49 30 26 02 12 63

Internet: [www.hugos-restaurant.de/en](https://www.hugos-restaurant.de/en)

### Listo



Listo provides the perfect setting any time of day. Enjoy hot snacks and refreshing drinks in the heart of Berlin, right on Gendarmenmarkt. A lit fireplace will keep you warm and cosy in the winter.

Photo: Hilton Berlin Hotel/Visit Berlin

Address: Hilton Berlin, Mohrenstraße 30, Berlin-Mitte

Opening hours: Daily 9am-1am

Phone: +49 30 20 23 02 461

Internet:

[www.hilton.com/en/hotels/berhitw-hilton-berlin/dining](https://www.hilton.com/en/hotels/berhitw-hilton-berlin/dining)

Email: [info.berlin@hilton.com](mailto:info.berlin@hilton.com)

### Rüyam Gemüse Kebab



Rüyam Gemüse Kebab is one of the legendary kebab places in Berlin — close to where David Bowie used to live! Not only that the quality is always on point, but the atmosphere is amazing. Don't be scared off by occasional long lines — you'll get your delicious meal in no time.

Photo: Felipe Tofani/cc by-sa 2.0/Flickr(image cropped)

Address: Hauptstraße 133, Berlin-Schöneberg

Opening hours: Daily 11am-midnight

Phone: +49 30 69 56 44 13

Internet: [rueyamdoener.de](https://rueyamdoener.de)

More Info: Find Rüyam Gemüse Kebab 2 on Kastanienallee

### Mustafa's Gemüse Kebap



Every guide to Berlin will mention Mustafa's Gemüse Kebap. This small kiosk in Kreuzberg attracts foodies from all over the world, so be

prepared to stay in line for at least an hour. The hearty chicken kebabs with grilled veggies are served with garlic and chilli sauce. Topped with crumbly feta cheese and fresh dill. Absolutely delightful.

Photo: Alana Harris/unsplash

Address: Mehringdamm 32, Berlin-Kreutzberg

Public Transport: U Mehringdamm

Opening hours: Mon-Thu 10am-1am, Fri 1:30pm-3am, Sat & Sun 10am-2am

Internet: [www.instagram.com/mustafasgemuesekebab](https://www.instagram.com/mustafasgemuesekebab)

### ROCA



The ROCA offers delicacies from the hotel's own patisserie and light regional cuisine. The ambience recalls the glorious Berlin cafe

culture of yore. Right next to the Kaiser Wilhelm church, so you get beautiful views out of the restaurant windows.

Photo: Interart Etudes Paris/Visit Berlin

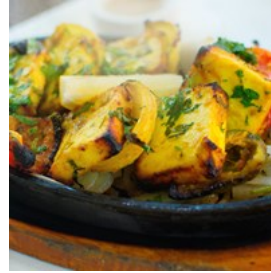
Address: Waldorf Astoria Berlin, Hardenbergstraße 28, Berlin-Charlottenburg

Opening hours: Daily 11:30am-10pm

Phone: +49 30 814 000 24 60

Internet: [waldorfastoriaberlin.de/dine/roca-restaurant](https://waldorfastoriaberlin.de/dine/roca-restaurant)

### Aapka



Aapka serves great Indian food in Mitte. Delicious creamy curries and grilled meat dishes are guaranteed. Try their eponymous Aapka beer!

Photo: Viktor Forgacs/unsplash

Address: Kastanienallee 50, Berlin-Mitte

Opening hours: Daily noon-11pm

Phone: +49 30 44 01 04 94

Internet: [www.aapka.de](http://www.aapka.de)

More Info: Kastanienallee close to Rosenthaler Platz is an excellent place to find cafes, bars and restaurants

### Kartoffelkeller



Kartoffelkeller offers hearty, regional specialities in a historic vaulted cellar or in the adjacent beer garden in the city centre. As the

name suggests, potato variations — both savoury and sweet — are the star of the show.

Photo: Mahmoud Fawzy/unsplash

Address: Kartoffelkeller Marcus Hüttner, Albrechtstraße 14b, Berlin-Mitte

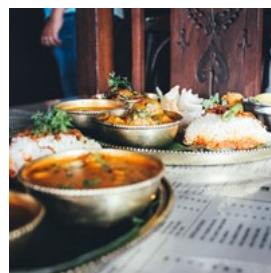
Public Transport: S+U Friedrichstraße

Phone: +49 30 28 28 548

Internet: [www.kartoffelkeller.com](http://www.kartoffelkeller.com)

Email: [info@kartoffelkeller.com](mailto:info@kartoffelkeller.com)

### Meena Kumari



Meena Kumari is an inviting Indian restaurant and bar with a modern interior, named after the beloved actress and poet. Enjoy the charming and

relaxed vibe here and try their chicken korma and the surprisingly delightful vegetable soup.

Photo: Outcast India/unsplash

Address: Lychener Straße 9, Berlin-Prenzlauer Berg

Opening hours: Daily from 5pm

Phone: +49 30 44 05 25 45

Internet: [www.meenakumari.de](http://www.meenakumari.de)

### Curry 36 — Bahnhof Zoo



Curry 36 is a Berlin classic. Order delicious wurst (sausage) with sweet curry sauce and add some fries to make it even better. Perfect for a quick bite.

Photo: Pubic Domain/Flickr (cropped)(image cropped)

Address: Hardenbergplatz 9, Berlin-Charlottenburg

Opening hours: Daily 8am-5am

Phone: +49 30 31 99 29 92

Internet: [curry36.de/de/places/bahnhof-zoo](http://curry36.de/de/places/bahnhof-zoo)

More Info: There are four Curry 36's in Berlin: on Mehringdamm, at Bahnhof Zoo, Hauptbahnhof and S-Bahnhof Warschauer Straße

### unsicht-Bar — Dark Restaurant Berlin



Dark Restaurant Berlin has a softly lit bar and a completely dark dining room. Experience fine culinary delights with all your senses (minus sight)

turned up to 11. Have fun at a murder mystery dinner, 'creepy castle' and other shows in total darkness. Some events include a menu that's a complete surprise. Give your eyes a well-deserved break!

Photo: Terry Vlisidis/unsplash

Address: BACKFABRIK, Unsicht-Bar Berlin, Saarbrücker Straße 36-38, Berlin-Prenzlauer Berg

Opening hours: Daily shows at 6pm

Phone: +49 30 98 54 71 66

Internet: [www.unsicht-bar.de/index-en.html](http://www.unsicht-bar.de/index-en.html)

### Xantener Eck Restaurant & Bierhaus



The Xantener Eck near Kurfürstendamm is one of the oldest restaurants offering traditional cuisine in the city. Its wood-panelled walls are

decorated with quirky memorabilia and the restaurant has an impressive collection of wine and beer.

Photo: Mark König/unsplash

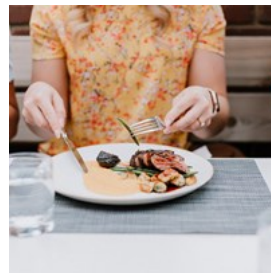
Address: Xantener Straße 1, Berlin-Charlottenburg

Opening hours: Daily noon-midnight

Phone: +49 30 883 90 14

Internet: [www.das-xantener-eck.de](http://www.das-xantener-eck.de)

### Mövenpick



Located in the inner courtyard of the Mövenpick Hotel, the restaurant surprises with innovative and modern dishes. You can choose

between Swiss and Mediterranean classics, as well as regional specialities based on local ingredients. Mövenpick restaurant is also a great place for vegan and vegetarian dishes. Enjoy your dinner and a glass of wine while gazing up to the sky above through the open glass roof — that is true Mediterranean lifestyle right in the middle of Berlin.

Photo: Priscilla Du Preez/unsplash

Address: Schöneberger Straße 3, Berlin-Kreuzberg

Public Transport: S Anhalter

Phone: +49 30 23 00 64 81

Internet: [www.movenpick.com/en/europe/germany/berlin/hotel-berlin/restaurants/restaurants/movenpick-restaurant](http://www.movenpick.com/en/europe/germany/berlin/hotel-berlin/restaurants/restaurants/movenpick-restaurant)

More Info: Smart casual dress code



### Katz Orange



Katz Orange serves creative international cuisine that goes well beyond the usual. The ingredients are sourced locally (as much as possible) and are transformed into delicious dishes with a South American touch. Quench your thirst with homemade soft drinks with flavours such as lavender-orange or mango-coriander. On sunny summer days, the restaurant also has a terrace in its idyllic rear courtyard setting.

Photo: Visit Berlin

Address: Bergstraße 22, Berlin-Mitte

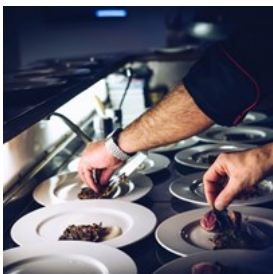
Opening hours: Daily 6pm-1am

Phone: +49 30 98 32 08 430

Internet: [katzorange.com/en](http://katzorange.com/en)

Email: [info@katzorange.com](mailto:info@katzorange.com)

### Restaurant Volt



The Volt is located in Umspannwerk Kreuzberg, a former electric substation built in 1928 right on the idyllic Landwehr Canal. Chef Matthias Gleis carefully combines ingredients so that they complement each other while retaining their individual characters. Highly refined! Sample dishes include kohlrabi soup with curry and fried prawns and free-range chicken served with peas, chanterelles, carrots and maize.

Photo: Fabrizio Magoni/unsplash

Address: Paul-Lincke-Ufer 21, Berlin-Kreuzberg

Opening hours: Tue-Sat 6pm-11pm, Sun & Mon closed

Phone: +49 30 33 84 02 320

Internet: [www.restaurant-volt.de/en](http://www.restaurant-volt.de/en)

### Die Henne



The legendary Henne on Kreuzberg's Leuschnerdamm is a real Berlin institution. Berliners love it especially for the best chicken in town. The oldest restaurant in the city has existed since 1621 and is now a culinary landmark. In a pub tradition going back more than a century, this was a place for persecuted Social Democrats to meet during the Nazi era and the guests watched the Wall be built right outside its doors.

Photo: Visit Berlin

Address: Alt Berliner Wirtshaus Henne, Leuschnerdamm 25, Berlin-Kreuzberg

Opening hours: Tue-Sun 5pm-10pm, Mon closed

Phone: +49 30 614 77 30

Internet: [www.henne-berlin.de/eng](http://www.henne-berlin.de/eng)

### CAFÉS



Dirk Mathesius/Visit Berlin

The streets of Berlin are choc-a-bloc full of cafés. They've got everything that you need for a good start to the day, from lactose-free latte macchiato to a hearty buffet.

You can grab a quick coffee to go and take a walk through one of the many parks in Berlin. Join the hordes of digital nomads tapping away at their laptops while sipping flat whites. Meet

friends and family over brunch with crunchy sourdough bread and a generous spread of cold cuts and jams.

In some cases, the distinction between cafés and bars in Berlin is not that obvious. Many places will serve you delicious meals all day, pour you a hot cup of coffee to keep you awake and will mix you a cocktail later in the night. Versatility is what Berlin is all about!

### Berliner Kaffeerösterei Ku'damm



Experience the smell of freshly roasted coffee beans and try out any of the 100 varieties in one of the last private coffee roasters in Germany. The

glass windows into the chocolate shop let you watch the master chefs make cakes and chocolate specialities and you can get your day off to a good start with breakfast in the cafe library.

Photo: Yulia Khlebnikova/unsplash

Address: Uhlandstraße 173, Berlin-Charlottenburg

Opening hours: Mon-Sat 9am-8pm, Sun 10am-7pm

Phone: +49 30 88 67 79 20

Internet: [www.berliner-kaffeeeroesterei.de](http://www.berliner-kaffeeeroesterei.de)

Email: [kontakt@berliner-kaffeeeroesterei.de](mailto:kontakt@berliner-kaffeeeroesterei.de)

### Schwarzes Cafe



Schwarzes Cafe is a relaxed all-day cafe and bar with an eclectic menu that will keep you satisfied from breakfast to dinner, plus

scrumptious desserts. Catch a bit of sun and some friendly chatter on the courtyard terrace.

Photo: David Straight/unsplash

Address: Kantstraße 148, Berlin-Charlottenburg

Phone: +49 30 313 80 38

Internet: [www.schwarzescafe-berlin.de](http://www.schwarzescafe-berlin.de)

More Info: Cash only

### Café Restaurant Jolesch



Fine Austrian cuisine and pastries in a wonderful atmosphere with its own wine shop and cakes to take away. The deep-coloured dining

rooms with large artworks envelop you in a feeling of cosiness.

Photo: Samuel Oakes/unsplash

Address: Muskauer Straße 1, Berlin-Kreuzberg

Opening hours: Daily 5pm-10pm

Phone: +49 30 612 35 81

Internet: [www.jolesch.de/en](http://www.jolesch.de/en)

Email: [mail@jolesch.de](mailto:mail@jolesch.de)

### Jelänger Jelierber



Jelänger Jelierber is an authentic neighbourhood restaurant serving modern German food at fair prices. Drop by for lunch to take advantage

of their day offers, which changes from day to day. You'll always find great vegetarian options here, too.

Photo: Arthur F. Selbach/Visit Berlin

Address: Kaskelstraße 49, Berlin-Lichtenberg

Opening hours: Tue 11:30am-2:30pm, Wed-Fri

11:30am-11pm, Sat 5pm-11pm, Sun & Mon closed

Phone: +49 30 55 57 60 67

Internet: [www.jelaengerjelieber.de](http://www.jelaengerjelieber.de)

### The Kaulsdorf Ice Cream Shop



Since 1997, this family business has been serving over 130 varieties of ice cream made from organic milk. The Kaulsdorf Ice Cream Shop also offers lactose-free ice cream. Fantastic option if you want to order a pie or cake for a special event. Family friendly, with good coffee for the adults — catch some sun on the little benches outside.

Photo: Michel Stockman/unsplash

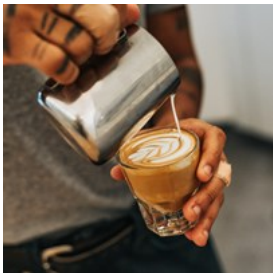
Address: Der Eisladen Kaulsdorf, Bausdorfstraße 65, Berlin-Hellersdorf

Opening hours: Tue-Sun 9am-5pm, Mon closed

Phone: +49 30 564 77 07

Internet: [www.der-eisladen.de](http://www.der-eisladen.de)

### Coffee Pony



Coffee Pony is a recent addition to Berlin's coffee scene. Friendly and charismatic staff, fast WiFi, great food and even better coffee. Their

Spanish-style cortado with condensed milk is an absolute must-try.

Photo: Tyler Nix/unsplash

Address: Richard-von-Weizsäcker-Platz 4, Berlin-Schöneberg

Public Transport: S Julius-Leber-Brücke

Opening hours: Mon-Fri 8am-7pm, Sat & Sun 9am-7pm

Phone: +49 176 2277 87 99

Internet: [www.instagram.com/thecoffeepony](https://www.instagram.com/thecoffeepony)

### Spoonful (formerly Eismanufaktur)



Spoonful, still called Eismanufaktur by some locals, is a tiny little ice cream shop with a varied selection of ice cream flavours with no artificial

colourings or flavourings. Try old classics like vanilla and pistachio or go for something more exotic like guava and white choc-parmezan. Great coffee, too.

Photo: Wesual Click/unsplash

Address: Auguststraße 63, Berlin-Mitte

Phone: +49 1512 42 378 79

Internet: [spoonfulberlin.de](http://spoonfulberlin.de)

More Info: Find five more locations in Berlin

### Café Rix



Café Rix is a relaxed café-restaurant in a beautiful converted dance hall. Drop by for breakfast, lunch or dinner, or just to sip a

cup of coffee while reading your favourite book. The cafe also hosts art events both inside and in their cosy garden.

Photo: Vlad Deep/unsplash

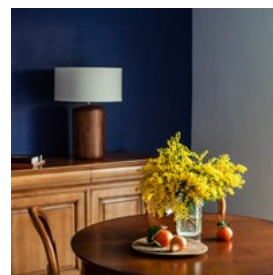
Address: Karl-Marx-Straße 141, Berlin-Neukölln

Public Transport: U Karl-Marx-Straße

Opening hours: Daily 10am-midnight

Phone: +49 30 686 90 20

### Wohnzimmerbar



Wohnzimmerbar is a great place for wine and evening cocktails, as well as great coffee and desserts. Pair your drinks with delectable small

bites. Get into a retro mood with modern antique armchairs and mismatched furniture: vintage kidney-shaped tables and other furniture from the 50s and 60s.

Photo: Elena Popova/unsplash

Address: Lettestraße 6, Berlin-Prenzlauer Berg

Opening hours: Daily 4pm-very late

Phone: +49 30 445 54 58



Internet: [www.instagram.com/wohnzimmerbarberlin](https://www.instagram.com/wohnzimmerbarberlin)

### Eispatisserie Hokey Pokey



Eispatisserie Hokey Pokey in Prenzlauer Berg has what is probably the best ice cream in Berlin. Try their creative flavours and check out the tiny boutique selling chocolates, pralines and t-shirts — awesome for small and sweet souvenirs.

Photo: Prachi Palwe/unsplash

Address: Stargarder Straße 73, Berlin-Prenzlauer Berg

Opening hours: Daily noon–7pm

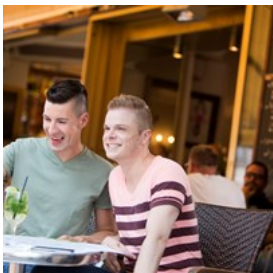
Phone: +49 176 45 62 77 46

Internet: [www.hokey-pokey.de](https://www.hokey-pokey.de)

Email: [hello@hokey-pokey.de](mailto:hello@hokey-pokey.de)

More Info: Hokey Pokey has three locations in Prenzlauer Berg, one in Mitte and another one in Pankow

### Cafe Berio



Cafe Berio has been a central meeting point for Berlin's gay and lesbian community since the 1970s. Come here for great coffee, creamy cakes, pastries and light meals. If you're lucky, you'll catch some live music. Their big outdoor terrace is cosy even when it's raining.

Photo: Arthur F. Selbach/Visit Berlin

Address: Maaßenstraße 7, Berlin-Schöneberg

Public Transport: U Nollendorfplatz

Phone: +49 30 2161 946

Internet: [berio-berlin.de/en](https://berio-berlin.de/en)

Email: [info@cafeberio.de](mailto:info@cafeberio.de)

### DoubleEye



Schöneberg's open secret, DoubleEye is not playing around when it comes to coffee. The best baristas in Berlin take the art of coffee to the

highest level here. Get your espresso classics, plus craft cold drip and iced espresso, lovingly made pastries and custard pies. You can also get great coffee beans for your brewing at home.

Photo: Nadya Filatova/unsplash

Address: Akazienstraße 22, Berlin-Schöneberg

Opening hours: Mon–Fri 8:19am–6:29pm, Sat 8:33am–5:57pm, Sun closed

Phone: +49 179 456 69 60

Internet: [www.doubleeye.de](https://www.doubleeye.de)

### Café BilderBuch



BilderBuch is a lovely neighbourhood cafe with all day breakfast and friendly staff. Comfy seats, walls covered with art and good WiFi. Bring

a book and spend an afternoon here, sipping great loose leaf tea. On warmer days, enjoy the cosy terrace with a huge red parasol.

Photo: Kritika Hasija/unsplash

Address: Akazienstraße 28, Berlin-Schöneberg

Opening hours: Daily 9am–midnight

Phone: +49 30 787 06 057

Internet: [www.cafe-bilderbuch.de](https://www.cafe-bilderbuch.de)

Email: [info@cafe-bilderbuch.de](mailto:info@cafe-bilderbuch.de)

### Rote Beete Café & Bar



Rote Beete close to Winterfeldtplatz is here, whether you're looking for a bar, a terrace, or a smoking lounge. The concept is quite simple:

cool guests and staff, affordable drinks and a friendly atmosphere.

Photo: Andrew Seaman/unsplash

Address: Gleditschstraße 71, Berlin-Schöneberg

Opening hours: Mon-Thu 6pm-1am, Fri & Sat 6pm-2am, Sun closed

Phone: +49 30 236 350 11

Internet: [www.rotebeete.com](http://www.rotebeete.com)

### Café Sibylle



Sibylle is a cafe and museum with a permanent exhibition on the history of Karl-Marx-Allee with its Communist-era 'workers' palaces'.

Photo: Cafe Sybille/Visit Berlin

Address: Karl-Marx-Allee 72, Berlin-Friedrichshain

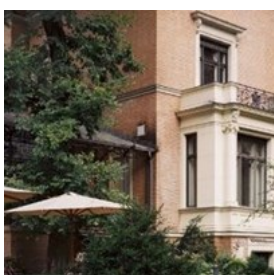
Opening hours: Wed-Sun 10am-6pm, Mon & Tue closed

Phone: +49 30 326 651 01

Internet: [www.cafe-sibylle.org](http://www.cafe-sibylle.org)

Email: [info@cafe-sibylle.com](mailto:info@cafe-sibylle.com)

### Cafe in the Literaturhaus (House of Literature)



Café im Literaturhaus breathes historic, literary ambience of the late 19th-century villa. The menu changes weekly, so you'll always be surprised

by something new. Enjoy a delicious meal, a coffee or attend a literary event. Catch some sun on their terrace or hide inside in the cosy

conservatory.

Photo: Literaturhaus Berlin/Visit Berlin

Address: Café im Literaturhaus, Fasanenstraße 23, Berlin-Charlottenburg

Opening hours: Daily 9am-midnight

Phone: +49 30 882 54 14

### Cafe Vux



Cafe Vux serves Brazilian-inspired vegan cuisine in an understated, clean space with a wall of framed pictures.

Everything they cook is vegan, homemade and fresh. Stop by for cakes, waffles, steamed bao buns and light meals.

Photo: Humphrey Muleba/unsplash

Address: Wipperstraße 14, Berlin-Neukölln

Opening hours: Wed-Sun 11am-6pm

Internet: [vux-berlin.com](http://vux-berlin.com)

Email: [hello@vux-berlin.com](mailto:hello@vux-berlin.com)

## BARS & NIGHTLIFE



Philip Koschel/Visit Berlin

Round your day off with a glass of nice wine or unleash the party monster within — you're sure to find the right sort of bar to plan your individual evening in Berlin. Your choices range from the exclusive hotel bars with modern designs to traditional drop-in corner pubs, to exotic cocktail lounges and shisha bars. Particularly popular are the sky bars in the

high-rise buildings on Ku'damm, at Alex or Potsdamer Platz. There are spectacular view of Berlin at night to be had from high over the city's roofs.

Berlin nightlife is legendary. The parties. The music. The people. Your wish is Berlin's command! Well-known DJs present the latest sounds to their audiences in the city's countless clubs, bars and discotheques. And there are always new clubs popping up everywhere. The intent of the party people is obvious: dance, have fun and party into the small hours. Because there are no closing hours in Berlin.

### Würgeengel



The Würgeengel has long been a Kreuzberg institution. While it's often packed when the adjacent cinema lets out, they don't let the

popularity detract from the quality of the cocktails. The service is unpretentious and the art deco interior a design lover's paradise.

Photo: Riccardo Andolfo/unsplash

Address: Dresdener Straße 122, Berlin-Kreuzberg

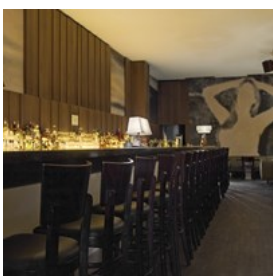
Opening hours: Mon-Sat from 7pm, Sun closed

Phone: +49 30 615 55 60

Internet: [www.wuergeengel.de](http://www.wuergeengel.de)

Email: [mail@wuergeengel.de](mailto:mail@wuergeengel.de)

### Victoria Bar



This neighbourhood classic is centrally located on Potsdamer Straße. Founded in 2001 by Stefan Weber, the first barkeep at Green Door.

'The Pleasure of Serious Drinking' is the motto on this island of stylish drinking culture, filled

nightly with a large fan base, including many artists and gallery owners. You can't go wrong with the Green Victoria, a champagne-based cocktail.

Photo: Kerstin Ehmer/Katja Hiendlmayer/Visit Berlin

Address: Victoriabar, Potsdamer Straße 102, Berlin-Mitte

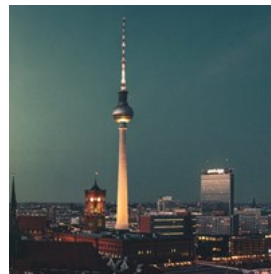
Opening hours: Daily from 6pm

Phone: +49 30 25 75 99 77

Internet: [www.victoriabar.de](http://www.victoriabar.de)

More Info: Happy Hour daily 6pm-9pm, and all night long on Sundays

### House of Weekend



House of Weekend is a popular nightclub with a low ceiling, compact dance floor and lush rooftop terrace. Party over the roofs of the city

with views of Alexanderplatz — absolutely wonderful location. International DJs regularly appear here.

Photo: Lukasz Czeladzinski/unsplash

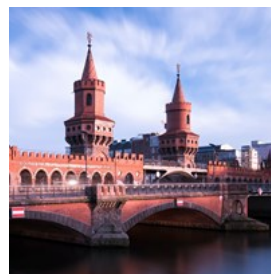
Address: Alexanderstraße 7, Berlin-Mitte

Opening hours: Thu 10pm-6am, Fri & Sat 11pm-6am

Phone: +49 1523 586 21 27

Internet: [www.houseofweekend.berlin](http://www.houseofweekend.berlin)

### Watergate



Watergate on the bank of the Spree is a techno nightclub with floor-to-ceiling windows and a roomy terrace overlooking the

spectacular Oberbaum Bridge. Move to the strobing lights and music by international DJs.

Photo: Daniel Lonn/unsplash

Address: Falckensteinstraße 49,

Berlin-Friedrichshain-Kreuzberg

Public Transport: U Schlesisches Tor

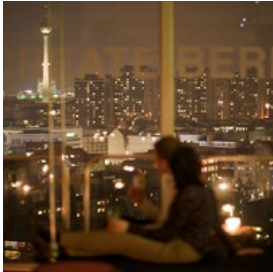


Phone: +49 30 612 80 394

Internet: [www.instagram.com/watergate.club.official](https://www.instagram.com/watergate.club.official)

Email: [info@water-gate.de](mailto:info@water-gate.de)

### Solar



Through its floor-to-ceiling windows, Solar delivers views from the 16th storey across the entire city: from Alexanderplatz to the Hauptbahnhof and Potsdamer Platz. Delicious food served to go with the drinks.

Photo: Solar Berlin/Ragnar Schnuck/Visit Berlin

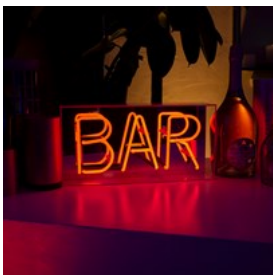
Address: Stresemannstraße 76,  
Berlin-Friedrichshain-Kreuzberg

Opening hours: Tue-Thu 6pm-1am, Fri & Sat 6pm-2am, Sun & Mon closed

Phone: +49 163 765 27 00

Internet: [www.solarberlin.com](http://www.solarberlin.com)

### Posh Bar



Posh is an Australian pub and bar in the heart of Berlin. Clean contemporary space with glass walls and a sidewalk terrace. Browse their list of over 200 cocktails and don't miss out on weekly specials.

Photo: Jack Van Hel/unsplash

Address: The Playce, Voxstraße 4, Berlin-Tiergarten

Opening hours: Tue-Fri from 5pm, Sat from 7pm, Sun & Mon closed

Phone: +49 30 252 99 000

Internet: [www.poshbar-berlin.de](http://www.poshbar-berlin.de)

Email: [poshbar@gmx.de](mailto:poshbar@gmx.de)

More Info: Posh Bar is smoker-friendly

### Matrix Club Berlin



Matrix Club Berlin, a celebrated nightlife spot, captivates with its unique blend of atmosphere and Berlin's nightlife charm. Located in Friedrichshain near the East Side Gallery, this club features 5 floors of live acts, DJs, and dance music, ensuring a lively party scene every night.

Photo: Matrix Club & Event GmbH/Visit Berlin

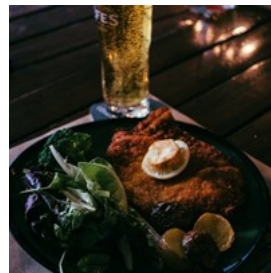
Address: Warschauer Platz 18, Berlin-Friedrichshain

Opening hours: Daily 10pm-5am

Phone: +49 30 36 50 73 65

Internet: [www.matrix-berlin.de/en](http://www.matrix-berlin.de/en)

### Wilhelm Hoeck 1892



Wilhelm Hoeck 1892 is an old-school Berlin pub with a jukebox and a long history. In fact, it is one of the oldest pubs in the city that you should visit.

Located close by the "Deutsche Oper", the pub is popular with opera artists after rehearsals and performances. The originally preserved taproom, panelled with wood and mirrors, takes the guests way back in time.

Photo: Deniz Demirci/unsplash

Address: Wilmersdorfer Straße 149, Berlin-Charlottenburg

Opening hours: Mon-Sat noon-1am, Sun 2pm-midnight

Phone: +49 30 3450 98 48

### Berghain & Panorama Bar



Inside the abandoned power plant you'll find not one, but two clubs. Berghain is one of the most well-known in the world, sometimes dubbed 'the church of Techno'. Panorama Bar offers a

slightly lighter atmosphere and plays all variations of house music. Be prepared for long lines, top-notch music played through the best audio system imaginable, and a party that doesn't stop until late morning. Definitely an experience of a lifetime.

Berghain bouncers are strict. They tend to dislike big groups, loud laughter in the queue and phones. Be cool and discrete, and don't wear your best clothes.

Photo: Michael Mayer/Flickr(image cropped)

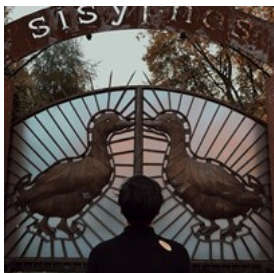
Address: Am Wriezener Bahnhof,  
Berlin-Friedrichshain-Kreuzberg

Opening hours: Fri 10pm-6am, Sat 11:59pm-noon, Sun 24  
hours, Mon midnight-6am

Internet: [www.berghain.berlin/en](http://www.berghain.berlin/en)

More Info: Cash only

### Sisyphos



Sisyphos will leave you exhausted, but in the best way possible. Located inside the vast indoor and outdoor spaces at a former dog biscuit

factory, this club-festival hybrid creates a unique atmosphere that's for long sunny weekends. You'll cross paths with students, experienced ravers and hippies. Dress code is often described as 'exciting'.

Sisyphos is somewhat far from the centre, but you can hop into a convenient shuttle from Ostkreuz. Remember to reserve some cash for your trip home.

Photo: Kağan Yıldızkaya/unsplash

Address: Hauptstraße 15, Berlin-Lichtenberg

Opening hours: Non-stop from Fri 10pm until Mon 8am

Internet: [sisyphos-berlin.net](http://sisyphos-berlin.net)

### Salon zur wilden Renate



Salon zur wilden Renate is a three-storey labyrinth of unrenovated apartments. Sporadic parties in this at-risk building turned into a

regular weekend affair. Move to techno, house or disco — you'll find your groove. Come here for costume parties, a cocktail bar and a lush garden.

Photo: Sam Mar/unsplash

Address: Renate, Alt-Stralau 70,  
Berlin-Friedrichshain-Kreuzberg

Phone: +49 30 250 414 26

Internet: [www.renate.cc](http://www.renate.cc)

### Tresor



Tresor (German for safe or vault) was founded in 1991 in the vaults of the former department store. The club takes its beginning back to when

Germany was reunified: it brought together all the who's-who of the techno and house scene. Since its establishment, Tresor has moved — in 2007 a decommissioned heat and power plant Heizkraftwerk Berlin-Mitte became its new home. The atmosphere remains honest and friendly, with a good mixture of different kinds of people who just want to dance the night away. You'll make friends in no time!

Photo: Angie Linder/cc by-sa 2.0/Flickr(image cropped)

Address: Köpenicker Straße 70, Berlin-Mitte

Public Transport: U Heinrich-Heine-Straße

Phone: +49 30 62 90 87 50

Internet: [tresorberlin.com](http://tresorberlin.com)

### Anomalie Art Club



Conceived and created by the Stay Free Kollektiv, the Anomalie Art Club offers music, arts and nightlife events of all kinds, exhibitions,

creative workshops, sports and various other leisure activities. Come here for some of the most spectacular visual design on Berlin's club scene. Anomalie also arranges film screenings and open-air parties.

Photo: Nicolas Hippert/unsplash

Address: Storkower Straße 123, Berlin-Pankow

Phone: +49 160 762 38 64

Internet: [www.instagram.com/anomalieartclub](https://www.instagram.com/anomalieartclub)

Email: [info@cats-booking.com](mailto:info@cats-booking.com)

### Meisterschueler



Meisterschueler is a modern art gallery and riverside bar that offers delicious beer and great cocktails, all in a friendly and creative

environment, plus a great terrace. Try their speciality — the "Meisterschueler Mule", with homemade ginger fizz and fresh cucumber balls.

Photo: Helena Yankovska/unsplash

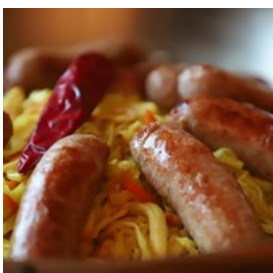
Address: Friedrichstraße 105b, Berlin-Mitte

Opening hours: Daily 5pm-4am

Phone: +49 30 22 00 22 88

Internet: [www.meisterschueler.bar](http://www.meisterschueler.bar)

### Dicke Wirtin



Dicke Wirtin is a proper German pub with many beers on tap, ridiculous house schnapps, honest prices and authentic regional cuisine.

Schmalz-based small bites will keep you going till late. Wood panelling and an abundance of small knick-knacks create a cosy atmosphere.

Photo: Igor Lukin/pixabay

Address: Carmer Straße 9, Berlin-Charlottenburg

Public Transport: S Savignyplatz

Opening hours: Daily from 11am-late

Phone: +49 30 312 49 52

Internet: [dicke-wirtin.de/en](http://dicke-wirtin.de/en)

Email: [post@dicke-wirtin.de](mailto:post@dicke-wirtin.de)

### An einem Sonntag im August



An einem Sonntag im August is a long-standing cafe and bar in Prenzlauer Berg. Stop by for their traditional inexpensive brunch for

just €5, have a coffee while reading a book or visit in the evening for drinks and the DJ playing tunes until late at night. Unbeatable for Berlin standards!

Photo: Sandra Nahdi/cc by-sa 2.0/Flickr(image cropped)

Address: Kastanienallee 103, Berlin-Prenzlauer Berg

Public Transport: U Eberswalder Straße

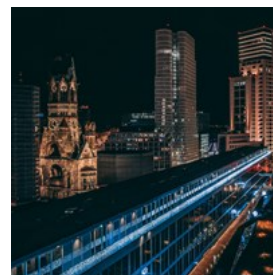
Opening hours: Mon noon-3am, Tue-Thu 1pm-3am, Fri & Sat 1pm-5am, Sun 1pm-3am

Phone: +49 30 44 05 12 28

Internet: [www.an-einem-sonntag-im-august.de](http://www.an-einem-sonntag-im-august.de)

Email: [info@cafe-sonntag.de](mailto:info@cafe-sonntag.de)

### Monkey Bar



Just east of the Bikini shopping centre in Ku'damm you'll find the incredibly popular Monkey Bar. It's funky, friendly and relatively

fancy, with an awesome rooftop view over the zoo and Kaiser Wilhelm Memorial Church. It's a good idea to arrive early so you can witness the sunset and avoid the queue.



Photo: GillyBerlin/cc by 2.0/Flickr(image cropped)

Address: Budapester Straße 40, Berlin-Mitte

Opening hours: Mon-Fri 1pm-2am, Sat & Sun noon-2am

Phone: +49 30 12 02 21 21 0

Internet: [www.monkeybarberlin.de/en](http://www.monkeybarberlin.de/en)

More Info: Located on the top floor of the 25hours Hotel

Bikini Berlin

## Holzmarkt 25



Holzmarkt 25 is a curious experiment: what if a city allowed a new quarter to be built by the nightclub owners who put on the best parties in town? The

result is a delightful hodgepodge of artistic buildings with spaces for entertainment, food and drinks, plus lots of semi-private nooks by the river. Best enjoyed in the summer and on sunny days.

Photo: Trine Syvertsen/cc by 2.0/Flickr(image cropped)

Address: Holzmarktstraße 25,

Berlin-Friedrichshain-Kreuzberg

Opening hours: Daily 9am-late

Internet: [www.holzmarkt.com](http://www.holzmarkt.com)

## Berlin Icebar



Berlin Icebar is a winter wonderland all year round — everything, from the walls to the seats to the glass that holds your drink, is crafted from ice.

For the most relaxing experience, you can book a tour that includes three drink tokens and a cosy jacket and gloves to keep you warm.

Photo: pxhere

Address: Spandauer Straße 2, Berlin-Mitte

Opening hours: Mon-Fri 5pm-midnight, Sat & Sun 4pm-midnight

Phone: +49 30 2349 70 28

Internet: [berlinicebar.com](http://berlinicebar.com)

Email: [hello@berlinicebar.com](mailto:hello@berlinicebar.com)

## SHOPPING



*Philip Koschel/Visit Berlin*

Lovers of exclusive designer fashion, bargain hunters, trendsetters looking for the latest fashion and all those who would like to take more than just pleasant memories of their time in Berlin home with them, are guaranteed to get their money's worth in the large shopping centres, department stores, small shops and exclusive boutiques in the city. Hip, casual and trendy or classical, elegant and timeless — there's something for every taste and budget.

One of the most popular shopping streets is Kurfürstendamm (also known as Ku'damm). The Kaufhaus des Westens (KaDeWe for short) in Tauentzienstraße is the largest department store on the European mainland and has an enormous range of goods.

In Berlin-Mitte, the legendary Friedrichstraße now exudes a cosmopolitan flair thanks to its new architecture and chic stores like the Galeries Lafayette or Quartier 206. Alexa at Alexanderplatz is also a great place for shopping.

For new trends and original accessories, having a look in the small shops dotted around the Hackesche Höfe in the former Scheunenviertel (barn district) is well worth your while. There are lots of young Berlin designers represented in

Münzstraße as well as Alte and Neue Schönhauser Straße. And let's not forget that Kastanienallee in Prenzlauer Berg or Bergmannstraße in Kreuzberg also have some pretty hot fashion shops, too.

Tip for bargain hunters and eco-conscious shoppers: the numerous flea markets in Berlin are great places to be on weekends. Go on Sundays at Straße des 17. June, in the Mauerpark (Wall park) or at Boxhagener Platz.

### Schlossstraße



Schloßstraße in the district of Steglitz is another of Berlin's popular shopping streets, largely due to the three shopping centres that line it: the Forum Steglitz, the Schloss-Straßen-Center on Walther-Schreiber-Platz, and Das Schloss near the Steglitz Rathaus. Another major mall called Boulevard offers over 180 shops.

Photo: Visit Berlin

Address: Schlosstraße, Berlin-Steglitz

Internet: [www.schlossstrasse.de](http://www.schlossstrasse.de)

More Info: [visitBerlin.de/en](http://visitBerlin.de/en)

### Friedrichstraße



Numerous shops line Friedrichstraße. There's no need to travel to Paris to shop Les Galeries Lafayette, there's a branch right here in Berlin, offering the best of France in its fine foods and fashion departments. Also worth a visit is Dussmann, which calls itself a department store for culture. You could spend hours here exploring the books and other media offered over

several floors.

Photo: Fragasso/Visit Brln

Address: Friedrichstraße, Berlin-Mitte & Kreuzberg

Public Transport: S+U Friedrichstraße, U Kochstraße, Stadtmitte, Französische Straße

### Kurfürstendamm



Kurfürstendamm, also called "Ku'damm" and Tauentzienstraße are Berlin's most famous shopping streets in the western part of the city.

The western end of Kurfürstendamm tends to be home to exclusive designers like Lagerfeld, Lacoste, and Tommy Hilfiger. Luxury brands such as Bulgari, Chanel, Louis Vuitton, Valentino and Gucci line the boulevard between Uhlandstraße and Adenauerplatz. The quieter side streets in either direction off Uhlandstraße also offer plenty of charm, with many chic cafes and restaurants in the neighbourhood serving as perfect spots for a break.

Photo: Leon Siebert/unsplash

Internet: [www.kurfuerstendamm.de/en](http://www.kurfuerstendamm.de/en)

### Hackescher Markt



Not far from the Museum Island and the cathedral, countless small shops are a perfect spot to take a break for some shopping. There's something for everyone here and around the nearby Hackesche Höfe, from boutiques to designer stores and internationally known fashion chains. Local cafes are also the ideal place to sit and watch the goings-on.

Photo: Schlaier/public domain/Wikimedia(image cropped)

Address: Hackescher Markt, Berlin-Mitte

Public Transport: S Hackescher Markt

### Mulackstraße & Alte Schönhauser Straße



The looks of true fashionistas will most likely be found in the neighbourhood around Alte Schönhauser Straße and Mulackstraße, home

to many designer flagship stores and one-of-a-kind boutiques. Just the right mix to make this neighbourhood a popular destination for a shopping trip.

Photo: Social Cut/unsplash

Address: Berlin-Mitte

Public Transport: U Weinmeisterstraße,  
Rosa-Luxemburg-Platz

### Oranienstraße & Bergmannstraße in Kreuzberg



Striking looks and vintage finds are on offer here in Kreuzberg. Vintage stores and young, fashionable boutiques, plus a good share of junk and design

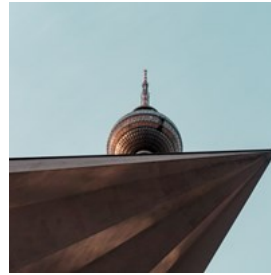
shops. Bergmannstraße is anything other than your standard German shopping street. It is home to many cafes and restaurants and plenty of small shops. Oranienstraße, meanwhile, offers a creative mix of old and new.

Photo: Valerio Pillar/cc by-sa 2.0/Flickr (anonymized)(image cropped)

Address: Berlin-Kreuzberg

Public Transport: U Moritzplatz, Südsterne

### Alexanderplatz



Alexanderplatz has been a centre for shopping since the 19th century.

The Galeria Kaufhof is one centrally located department store, as is

Alexa, which contains a variety of shops, labels, and restaurants. Alexanderplatz offers seasonal markets and events from Oktoberfest to Christmas markets, all under the watchful eye of the TV Tower.

Photo: Heye Jensen/unsplash

Address: Alexanderplatz, Berlin-Mitte

Public Transport: U Alexanderplatz

More Info:

<https://www.visitberlin.de/en/shopping-alexanderplatz>

### Ritter Sport Chocolate Store



Ritter Sport, the famous square chocolate brand, has a colourful store in the heart of Berlin near Gendarmenmarkt. Have a tasty treat at their

SchokoCafé. Explore the SchokoPfad to learn how our chocolate is created and everything else that you ever want to know about chocolate. At our SchokoKreation you can create your own personal dream bar from exceptional ingredients, such as gummy bears or pink peppercorns. You will find many other exciting gifts at the SchokoShop. Admission is free.

Photo: Ritter Sport/Visit Berlin

Address: Bunte SchokoWelt, Französische Straße 24, Berlin

Public Transport: S Friedrichstrasse, U Französische Strasse, Stadtmitte, Friedrichstraße

Phone: +49 30 2009 50 80

Internet: [www.ritter-sport.com/en-gb/berlin](http://www.ritter-sport.com/en-gb/berlin)



### KaDeWe — Kaufhaus des Westens



Spanning over 60,000 square metres, Berlin's KaDeWe is among the world's leading department stores. Its reputation is built on an exclusive selection, a keen sense of trends, and sophisticated presentation. Across eight floors, this premium store showcases a diverse array of shopping delights, from international luxury brands to home accessories and gourmet foods, blending tradition with contemporary shopping culture. The KaDeWe is renowned for its extraordinary lifestyle displays, unique events, extensive product range, and exceptional service.

Photo: Visit Berlin

Address: Tauentzienstraße 21-24, Berlin

Opening hours: Mon-Sat 10am-8pm, Sun closed

Phone: +49 30 21210

Internet: [www.kadewe.de](http://www.kadewe.de)

### McArthurGlen Designer Outlet Berlin



Your favourite designer brands at 30% to 70% off of the RRP, all year round. Designer Outlet Berlin is conveniently located just 30 minutes from Berlin city centre. More than 90 stores offer something for everyone: From iconic fashion labels such as Hugo Boss, Ralph Lauren and Tommy Hilfiger, sports labels such as Asics and Adidas, popular fashion brands such as Falke and Fossil, to home accessories from WMF and Villeroy & Boch.

Photo: Visit Berlin

Address: Alter Spandauer Weg 1, Wustermark

Phone: +49 333 234 9040

Internet: [www.designeroutletberlin.com](http://www.designeroutletberlin.com)

### The Playce at Potsdamer Platz



Welcome to the heart of Berlin! Discover 130 shops, restaurants and bars with a cosmopolitan flair close to Potsdamer Platz. Catch a film at the cinema and enjoy a meal at the food court.

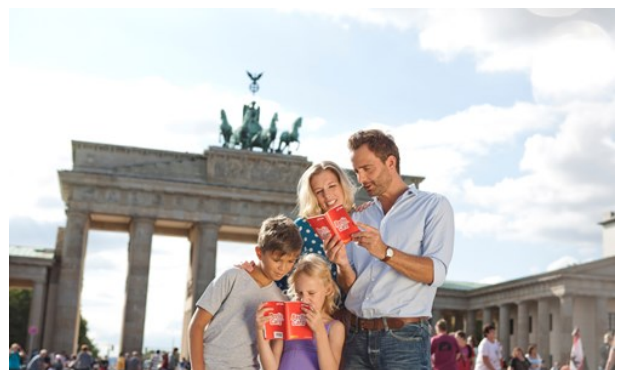
Photo: © Raimond Spekking / CC BY-SA 4.0 (via Wikimedia Commons)(image cropped)

Address: Alte Potsdamer Straße 7, Berlin

Opening hours: Mon-Sat 10am-9pm, Sun closed

Internet: [www.potsdamerplatz.de/en](http://www.potsdamerplatz.de/en)

## TOURIST INFORMATION



Thomas Kierok/Visit Berlin

### Passport / Visa



Germany can be visited visa-free for up to 90 days by citizens of Australia, New Zealand, Japan, South Korea, Taiwan, Malaysia, Israel, the UAE and most countries in America. If you are unsure whether or not you need to apply for a visa, we recommend contacting the embassy or consulate in your country. International (non-Schengen) travellers need a passport that is valid for at least 3 months after the end of their intended trip in order to enter the Schengen zone.

Citizens of Schengen countries can travel without a passport, but must have a valid ID with them during their stay.

Photo: ConvertKit/unsplash

### Berlin Brandenburg Airport Willy Brandt (BER)



Berlin Brandenburg Airport Willy Brandt (BER) is the only airport operating in Berlin since Tegel airport saw its last flight depart in November 2020. The new airport is well connected to the city by S-Bahn, buses and long-distance trains. The Airport Express (FEX) and regional trains (RE7, RB14) travel between Berlin central station and "Flughafen BER - Terminal 1-2" station several times per hour. The S9 and S45 S-Bahn trains travel every 20 minutes, serving the "Terminal 1-2" and "Terminal 5" stations.

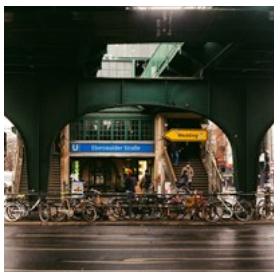
Photo: yousef alfuhi/unsplash

Phone: +49 30 6091 6091 0

Internet: [ber.berlin-airport.de/en.html](https://ber.berlin-airport.de/en.html)

More Info: The airport is located in the C zone when it comes to public transport. You will either need to have an ABC zone ticket or buy a C zone extension

### Frequently Asked Questions About Berlin (FAQs)



- Is it safe in Berlin?  
Berlin is a hospitable and cosmopolitan city, especially in the central areas frequented by visitors. There are no no-go areas in the city and it's safe to walk alone at night. Nonetheless, it is impossible to rule out crime completely. Should anything happen — don't hesitate to contact the police. It's best to avoid dark parks at night if you want to stay away from illegal "business transactions".

- Is Berlin cheap or expensive?

Berlin is probably the cheapest Western European capital city. To stay within a low budget, consider getting a bike-sharing subscription and take advantage of lunch offers — there are lots of great deals!

- Is English spoken in Berlin?

Yes! Berlin is a very cosmopolitan city and English is its lingua franca. All restaurants, bars, cafes and hotels will have English speaking staff. Even places not catering to tourists will accommodate English speakers.

- Where is the heart of Berlin?

Berlin doesn't have one clearly defined centre. Each neighbourhood has its own vibe and feel and you'll have to find your favourite. The closest thing Berlin gets to a "city centre" is Mitte. Museum Island, the city hall Rotes Rathaus and the Altes Stadthaus, the famous TV tower, Brandenburg Gate at the end of the Unter den Linden boulevard are all located here.

- What is Checkpoint Charlie?

Checkpoint Charlie was the most famous border crossing during the years when Berlin was divided by the Wall. The iconic sign "You are now leaving the American Sector" is world famous.

Photo: Arthur Yuzkiv/pexels

### Best Time to Visit



In terms of weather, the best time to visit Berlin is May through September, when the weather is ideal for outdoor activities: sitting around in outdoor cafes and restaurants, wandering through the city and parks, biking around and staying out all night. June offers the Carnival of Cultures, July has the Pride Parade and September brings you the Berlin Art Week.

Winter, on the other hand, is cold: the temperature is close to freezing during the day. Of course, winter holidays are a great time to check out the local markets and relax with a cup of hot cocoa or mulled wine. The Berlinale film festival also takes place in the winter.

Photo: Raphael Renter/unsplash  
Internet: [www.berlin.de/en/events](http://www.berlin.de/en/events)

### Public Transport



The local public transport system allows you to get anywhere in Berlin — comfortably, safely and cheaply. The expanded transport network of

S-Bahn, U-Bahn, buses and trams provides you with unrestricted mobility, even at night: on Fridays and Saturdays as well as the nights before public holidays, nearly all the S-Bahn and U-Bahn network operate all through the night at 15 minute intervals.

The most convenient way to buy tickets is through the official ticket purchasing app for public transport in Berlin — BVG Tickets.

Photo: Visit Berlin

### Taxi



When hiring a taxi in Berlin, you pay a basic charge of €4.30 plus €2.10-2.80 for each kilometre travelled. The 'Kurzstrecke' (short distance) tariff gives you a journey of up to two kilometres for €6.00 — in this case, however, you have to flag down the taxi yourself. The 'Kurzstrecke' tariff does not apply if you order a taxi or get in one at a designated taxi-waiting spot.

If you think that ordering a taxi by phone is a little too retro, order one through the [taxi.eu](http://taxi.eu) app.

Photo: Marc Kleen/unsplash  
Phone: +49 30 20 20 21 22 0  
Internet: [www.taxi-berlin.de](http://www.taxi-berlin.de)  
More Info: [www.visitberlin.de/en/taxis-berlin](http://www.visitberlin.de/en/taxis-berlin)

### Postal Service



You can buy stamps in post offices and at tobacconist shops. Post office opening times vary — they are normally open between 8 am and 6 pm

weekdays and between 9 am and 1 pm on Saturdays.

The Eckert press store with a post office on Georgenstraße, Berlin-Mitte is open every day of the week.

Photo: onnola/cc by-sa 2.0/Flickr(image cropped)  
Address: Eckert, Georgenstraße 14-18, Bahnhof Friedrichstraße, Berlin-Mitte  
Public Transport: S & U Friedrichstraße  
Opening hours: Mon-Fri 6am-8pm, Sat & Sun 7am-8pm  
Internet: [www.deutschepost.de/en/home.html](http://www.deutschepost.de/en/home.html)



## Dentists



Beware of the German Vollkornbrot — it's delicious and healthy, but the seeds can do a number on your teeth. Follow the link to All

About Berlin to see a list of English speaking dentists in Berlin

Photo: Dirk Demehl/Visit Berlin

Internet: [allaboutberlin.com/guides/list-of-english-speaking-dentists-in-berlin](https://allaboutberlin.com/guides/list-of-english-speaking-dentists-in-berlin)

## Pharmacy



You can fill your prescription and buy over the counter medication in Berlin by finding one of the many pharmacies signed with the large red

letter "A". They are often confused with drugstores (Drogerie), where you can get toiletries, but not medication.

Pharmacies in Berlin are usually open just like any other store: closed in the evening, on Sundays and holidays. If you need medication outside of normal working hours, you can also visit your local emergency pharmacy. Check the website below to find the closest one to you.

Photo: Mika Baumeister/unsplash

Internet:

[www.aponet.de/service/notdienstapotheke-finden.html](https://www.aponet.de/service/notdienstapotheke-finden.html)

## Telephone



Country code: +49 Area code: (0)30

Photo: Antti T. Nissinen/cc by 2.0/Flickr

## Electricity



Germany uses the Types C and F (with two earth clips on the side) electrical plug with two round pins, same as in many countries in

Continental Europe. The standard voltage is 230 volts, but some hotels have special plugs for 110 or 120-volt shavers.

Photo: Mike Winkler/unsplash

## Population

3,58 million (2024)

## Currency

Euro, €1 = 100 cents

## Opening hours

Most businesses are closed on Sundays. Shops and department stores are usually open from 8 am to 10 pm from Monday to Saturday, though your best chance to get what you need is before 8 pm. Fortunately, some grocery stores and pharmacies in Berlin are open on Sundays, but you'll have to spend some time looking for them.

For small things, head to a Spätkauf (or Späti). It's a type of convenience shop particular to Berlin, known for staying open late. The term literally translates to 'late purchase'.

## Internet

[www.visitberlin.de/en](https://www.visitberlin.de/en)

## Newspapers

Berliner Zeitung:

[www.berliner-zeitung.de/topics/english-edition](https://www.berliner-zeitung.de/topics/english-edition)

The Tagesspiegel: [www.tagesspiegel.de](https://www.tagesspiegel.de)

The Berliner Morgenpost: [www.morgenpost.de](https://www.morgenpost.de)

Die Welt: [www.welt.de](https://www.welt.de)

## Emergency numbers

Emergency / Police: 110

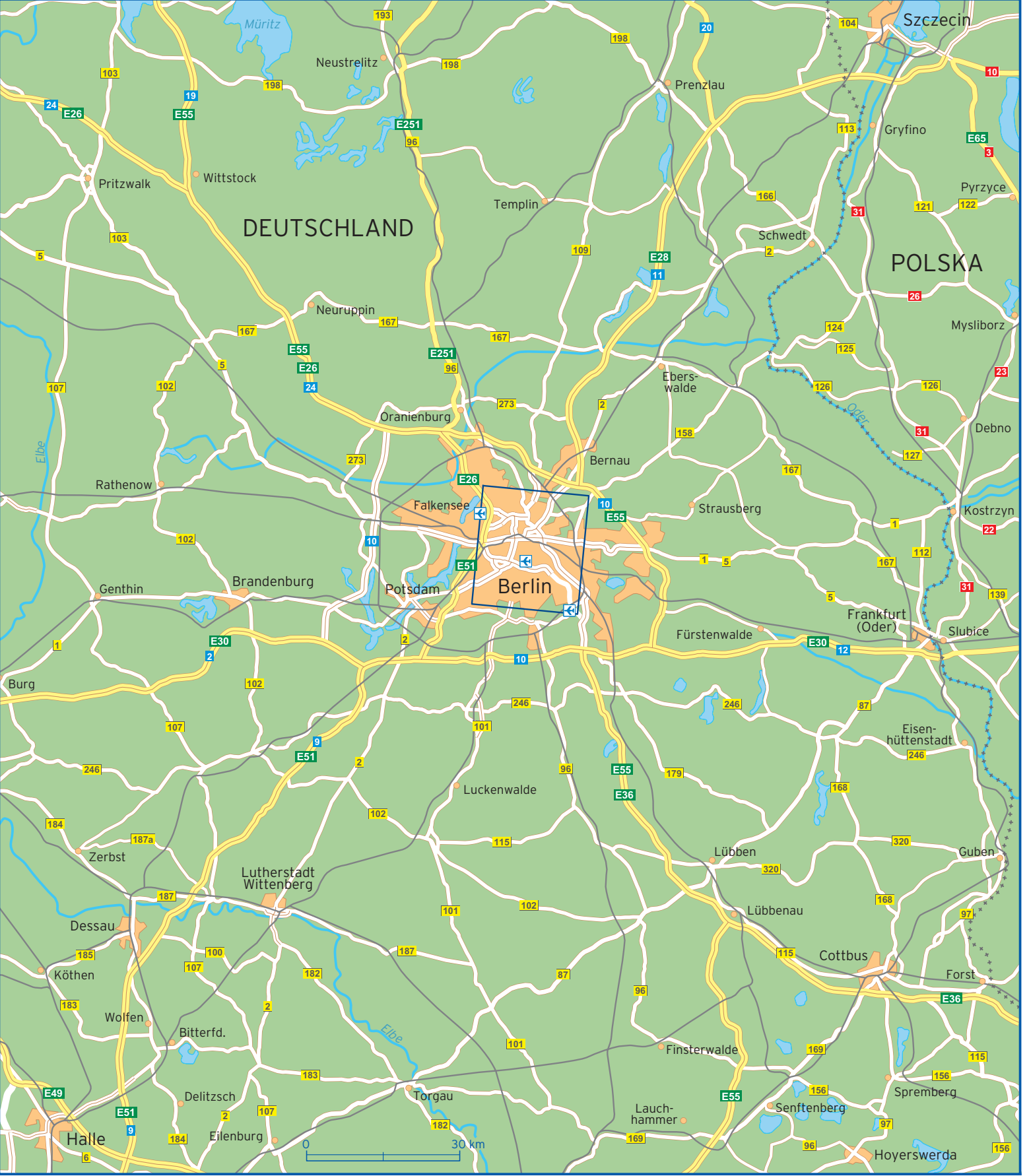
Fire brigade / Rescue Coordination Centre: 112

On-call medical service: +49 30 31 00 31

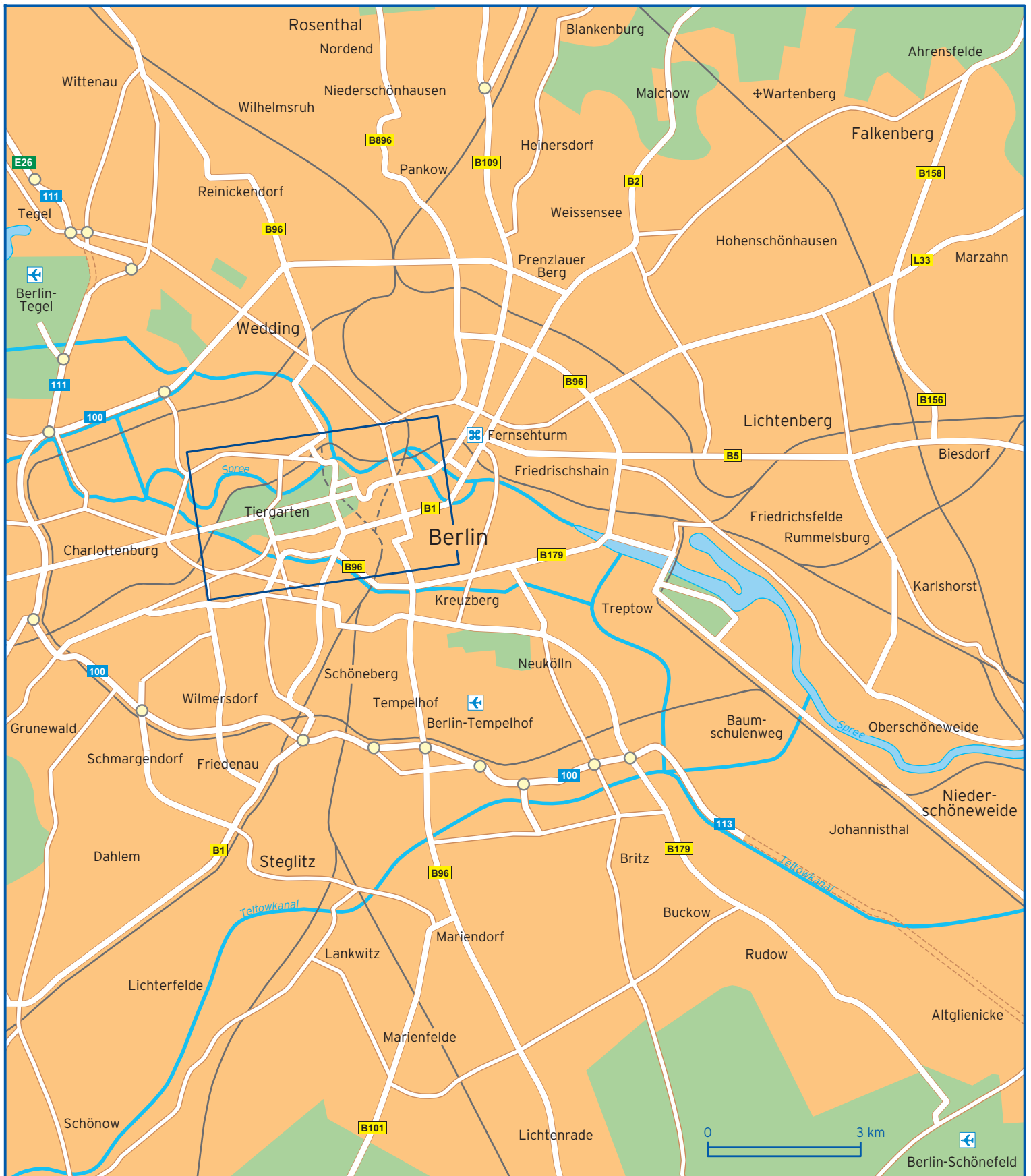
**Tourist information**

Full list of tourist information offices by city district:  
[www.visitberlin.de/en/tourist-informations-districts](https://www.visitberlin.de/en/tourist-informations-districts)

You can also call +49 30 25 00 25 or send an email to  
[hallo@visitBerlin.de](mailto:hallo@visitBerlin.de)













Agricolastrasse	A2	Eichhornstrasse	E3 E4	Klingelhöferstrasse	C3 C4
Albrechtstrasse	F1	Einemstrasse	C4	Klopstockstrasse	A2 B2
Alexanderufer	E1	Elberfelder Strasse	A1	Kluckstrasse	C4 D4
Alt Moabit	A1 B1 C1 D1	Englische Strasse	A2	Kochstrasse	F4 G4
Alte Jakobstrasse	G4	Entlastungsstrasse	D3	Krausenstrasse	G3
Alte Potsdamer Strasse	E3 E4	Essener Strasse	A1	Krausnickstrasse	G1
Altonaer Strasse	B2	Feilnerstrasse	G4	Krefelder Strasse	A1
Am Karlsbad	D4 E4	Flensburger Strasse	B2	Kronenstrasse	F3 G3
Am Kupfergraben	G1 G2	Franz Liszt Ufer	D1	Kurfürstendamm	A4
Am Lustgarten	G2	Französische Strasse	F3 G2	Kurfürstenstrasse	B4 C4
Am Weidendamm	F1	Friedrichsgracht	G2 G3	Kurstrasse	G3
Am Zeughaus	G2	Friedrichstrasse	F1 F3 F4	Köbisstrasse	C3 C4
An der Urania	B4	Gabriele Tergit Promenade	E4	Köthener Strasse	E4
Anhalter Strasse	F4	Genthiner Strasse	C4	Landgrafen Strasse	B4
Ansbacher Strasse	B4	Georgenstrasse	F2	Lehrter Strasse	D1
Augsburger Strasse	A4	Gertrud Kolmar Strasse	E3	Leipziger Platz	E3
Auguststrasse	G1	Gipsstrasse	G1	Leipziger Strasse	E3 F3 G3
Axel Springer Strasse	G3 G4	Glinkastrasse	F2 F3	Lennéstrasse	E3
Bachstrasse	A2	Grosser Stern	B3	Lesser Ury Weg	C1 D1
Bartningallee	B2	Hamburger Strasse	G1	Lessingstrasse	B1
Bayreuther Strasse	B4	Hannah Ahrendt Strasse	E3	Levetzowstrasse	A1 A2
Bebelplatz	G2	Hannoversche Strasse	F1	Lichtensteinallee	B3
Behrenstrasse	E2 F2	Hansaplatz	B2	Lindenstrasse	G4
Bellevueallee	D3	Hansaufer	A2	Linienstrasse	F1
Bellevuestrasse	E3	Hardenberg Strasse	A4	Linkstrasse	E4
Bernburger Strasse	E4	Hedemannstrasse	F4	Los Angeles Platz	A4
Bertolt-Brecht-Platz	F1	Helgoländer Uter	B1 B2	Luisenstrasse	E1
Besselstrasse	F4 G4	Hertzallee	A3	Lüneburger Strasse	C1 C2
Beuthstrasse	G3	Hildebrandstrasse	C3 C4	Lützowplatz	C4
Bissingzeile	D4	Hiroshimastrasse	C3	Lützowstrasse	C4 D4
Bochumer Strasse	A1	Hitzigallee	D4	Lützowufer	B4 C4
Bodestrasse	G2	Hofjägerallee	B3	Marburger Strasse	A4
Breitscheid Platz	A4	Holsteiner Ufer	B1	Marienstrasse	E1 F1
Breslau Strasse	A3	Händelallee	A2 B2	Markgrafenstrasse	G3 G4
Budapesterstrasse	B4	Invalidenstrasse	D1	Mauerstrasse	F3
Bundesratufer	A1	Jagow Strasse	A1 A2	Melanchthonstrasse	C1 C2
Burggrafenstrasse	B4	Jebensstrasse	A3 A4	Mittelstrasse	F2
Burgstrasse	G1 G2	Jerusalemer Strasse	G3	Mohrenstrasse	F3 G3
Calvinstrasse	C1	Joachimstaler Strasse	A4	Möckernstrasse	F4
Charlottenstrasse	F2 F3 F4	Johannisstrasse	F1	Neustädtische Kirschstrasse	F2
Claire Walldoff Strasse	F1	John Foster Dulles Allee	D2	Niederkirchnerstrasse	E4 F4
Claudiusstrasse	B1 B2	Junkerstrasse	G4	Niederwallstrasse	G3
Corneliusstrasse	B4	Jägerstrasse	F3 G3	Nürnberger Strasse	A4
Dehler Strasse	B3	Kantstrasse	A4	Oberwallstrasse	G2 G3
Derfflingerstrasse	C4	Kapelleufer	E1	Olof Palme Platz	A4 B4
Dessauer Strasse	E4	Karl Liebknecht Strasse	G2	Oranienburger Strasse	F1 G1
Dorotheenstrasse	E2 F2	Katharina Heinroth Ufer	B3 B4	Oranienstrasse	G4
Drakestrasse	B3	Keithstrasse	B4	Otto Dix Strasse	C1
Ebertstrasse	E3	Kirchstrasse	B1	Otto von Bismarck Allee	E2

Ottostrasse	A1	Schumannstrasse	E1 F1	Thomasiusstrasse	B1
Pariser Platz	E2	Schöneberger Strasse	E4	Tiergartenstrasse	C3 D3
Paul Löbe Allee	D2 E2	Schöneberger Ufer	D4	Tiergartenufer	A3
Paul Strasse	C1 C2	Schützenstrasse	G3	Tucholskystasse	F1 G1
Platz der Republik	D2 E2	Seydlitzstrasse	C1	Turmstrasse	A1 B1 C1
Potsdamer Brücke	D4	Siegmunds Hof	A2	Universitätsstrasse	F2 G2
Potsdamer Platz	E3	Sigismundstrasse	D4	Unter den Linden	F2
Potsdamer Strasse	D3 D4 E3	Simsonweg	E2	Von der Heydt Strasse	C4
Puttkamerstrasse	F4	Sophienstrasse	G1	Vosstrasse	E3
Rankestrasse	A4	Spenerstrasse	C1	Werderscher Markt	G2
Rathenower Strasse	C1	Spreeweg	C2	Wichmannstrasse	B4
Rauchstrasse	B3	Stauffenbergstrasse	D3 D4	Wilhelmstrasse	E2 E3 F3 F4
Reichpietschufer	C4 D4 E4	Strasse des 17. Juni	A3 B3 C2 D2 E2	Willy Brandt Strasse	D1 D2
Reichstagufer	E2 F2	Stresemannstrasse	E4 F4	Wilsnacker Strasse	C1
Reinhardtstrasse	E1 F1	Stromstrasse	B1	Wittenbergplatz	B4
Ritterstrasse	G4	Stülerstrasse	B3 B4	Wullenweberstrasse	A2
Scheidemannstrasse	D2 E2	Taubenstrasse	F3 G3	Ziegelstrasse	F1
Schillstrasse	B4 C4	Taentzienstrasse	A4 B4	Zimmerstrasse	F4 G4
Schlossplatz	G2	Thomas Dehler Strasse	B3	Zwinglistrasse	A1