

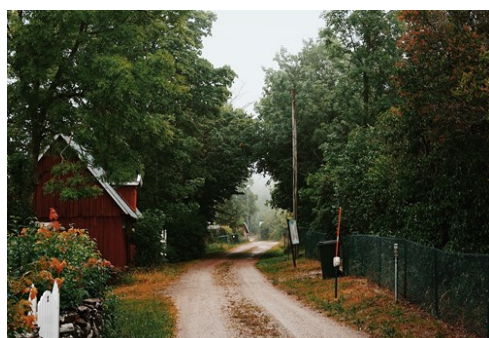


# Öland

Photo: Carl Tronders/unsplash



Ölands Turistbyrå



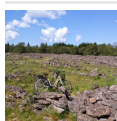
Oscar Nord/unsplash



Ölands Turistbyrå

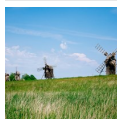
Welcome to Sweden's smallest province, and an island of grand adventures. Here, the best things in life don't cost a penny — the distinctive natural landscapes are free for all to enjoy. With over 300 kilometres of coastline, countless beaches, more than 75 nature reserves, the expansive Stora Alvaret, and the World Heritage-listed agricultural landscape of Southern Öland, there's no shortage of natural wonders. An added bonus is the 28 different species of orchids that flourish across the island. Welcomed to Öland!

## Featured



### Biking Trails

The cycling routes are clearly marked along the small roads of Öland. The 45...



### Öland's Windmills

Proudly weathered by the wind, the windmills give the Öland landscape its ch...



### Sandviks Kvarn

Sandviks Kvarn, a towering windmill just 30 km north of Borgholm, isn't just...



### Biking on Öland

Allow yourself plenty of time for cycling on Öland. Not because it's strenuo...



### Böda Ecopark

Böda Ecopark offers a distinctive and welcoming landscape at the northernmos...

## Top 5



### VIDA Museum & Art Gallery

VIDA Museum & Art Gallery, situated along Route 136, 9 kilometres south of B...



### Solliden Palace

Solliden is the summer residence of the Swedish royal family, which they vis...



### Eketorp Fortress

Eketorp fortress is a completely excavated and reconstructed ancient fort, w...



### Ölands Museum Himmelsberga

Himmelsberga is Öland's most authentic village, now preserved as an open air...



### Borgholm Castle

Borgholm Castle, a stunning silhouette against the Öland sky, stands as a te...

## THE ISLAND



*Ölands Turistbyrå*

Öland, Sweden's smallest province, has lots to offer. Every square kilometre has something to offer the visitor. All you have to do is make your way over the Öland Bridge (6,072 m) and start discovering.

There is:

- approx. 500 km coastline
- around 350 Öland windmills
- 34 parishes with their own church (some even have 2)
- about 20 ancient forts
- countless rune stones and other ancient monuments
- 32 different species of orchid
- over 70 nature reserves
- 1 world heritage site
- over 50 bathing places

...and much, much more.

You are welcome to find your own favourite spot.

Öland's length: 137 km

Province flower: Öland rock rose

Öland's widest point: 16 km

Province animal: Nightingale

Land area: 1,344 sq. km

Province fish: Flounder

Highest point: 57.4 m above sea level

Province insect: Pink-winged grasshopper

Number of inhabitants: approx. 26,000

Province rock: Orthoceratite limestone

Municipalities: Borgholm and Mörbylånga

Province fungus: St George's mushroom

Province dish: Kroppkakor (potato and pork dumplings), lufsa (potato pancakes)

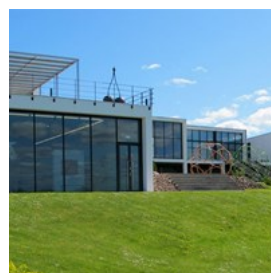
## TOP 10



*L.G.foto/cc by-sa 4.0/wikimedia (image cropped)*

10 points of interest on Öland

### VIDA Museum & Art Gallery



VIDA Museum & Art Gallery, situated along Route 136, 9 kilometres south of Borgholm on Öland, is built on a spot of breathtaking coastal



beauty, perched at the top of a slope overlooking the Kalmarsund. Today's 2000 m<sup>2</sup> building, constructed of glass, concrete, iron and wood, stands on historic ground, just north of Halltorps Inn.

This contemporary art museum showcases impressive glass art of Bertil Vallien and Ulrica Hydman-Vallien. You can explore numerous milestone artworks from the early 1960s, to the very latest work in glass, ceramics, sculpture and painting.

Photo: Ölands Turistbyrå

Address: VIDA museum & konsthall, Halltorp, Borgholm

Phone: +46 485 774 40

Internet: [www.vidamuseum.com](http://www.vidamuseum.com)

More Info: VIDA features two art galleries, three museum sections, a large museum shop, and a café/bistro.

### Solliden Palace



Solliden is the summer residence of the Swedish royal family, which they visit several times a year. Commissioned by Queen Victoria, on the advice of her doctor Axel Munthe, and with Mediterranean influences, the palace was completed in 1906. Munthe was of the opinion that Öland's abundant sunshine and oxygen-rich air would improve her health, and to this day the royals are happy to enjoy Öland's sun! Solliden Palace is open to visitors throughout the summer months. Visitors have free access to most of the parks. Café, shop and a pavilion with exhibitions.

Photo: Anna Schibli/Ölands Turistbyrå

Address: Sollidenvägen, Borgholm

Opening hours: Mid-May to mid-September

Phone: +46 70 561 53 56

Internet: [sollidenslott.se/solliden-palace](http://sollidenslott.se/solliden-palace)

Email: [sollidenslott@sollidenslott.se](mailto:sollidenslott@sollidenslott.se)

### Eketorp Fortress



Eketorp fortress is a completely excavated and reconstructed ancient fort, where the reconstructions have been carried out directly

on the archaeological remains. The ring wall stands five metres high and six metres wide, and within it lie Iron Age stone houses and medieval timber-framed buildings, all reconstructed using traditional craftsmanship techniques and materials.

Photo: L.G.foto/cc by-sa 4.0/wikimedia (cropped)(image cropped)

Address: Eketorps Borg, Degerhamn

Phone: +46 485 479 90

Internet: [www.eketorpsborg.se](http://www.eketorpsborg.se)

Email: [eketorpsborg@morbylanga.se](mailto:eketorpsborg@morbylanga.se)

### Ölands Museum Himmelsberga



Himmelsberga is Öland's most authentic village, now preserved as an open air museum with enclosed farms built along both sides of the narrow

village road.

The heart of the museum consists of several large farms with buildings dating back the 18th and 19th century. The cottage is still has the original furniture, and the old stables are packed with all the tools and equipment that were used on the farms.

The coffee shop sells freshly baked bread and hot pies, and you can buy genuine Öland handicrafts in the village shop.

Himmelsberga holds exhibitions of arts and

crafts in its two galleries. There's also an art museum with a collection of older and modern Öland paintings.

Photo: Ölands Turistbyrå

Address: Himmelsberga bygata 1, Borgholm

Phone: +46 73 314 67 04

Internet: olandsmuseum.com

### Borgholm Castle



Borgholm Castle, a stunning silhouette against the Öland sky, stands as a testament to Sweden's rich tapestry of history. Known as Scandinavia's most captivating ruin, this architectural chameleon has evolved through the centuries, echoing tales of regality and resilience. Though now a poignant shell due to the devastating fire of 1806, it continues to guard the stories of its past, from medieval might to Renaissance elegance.

Photo: Ölands Turistbyrå

Address: Borgholms Slottsruin, Sollidenvägen 5, Borgholm

Phone: +46 485 885 00

Internet: borgholmsslott.se/en

Email: borgholms.slott@borgholm.se

### Trollskogen Nature Reserve & Nature Centre



At the northeastern tip of Öland, by the gate to Trollskogen (Troll Forest) nature reserve, you'll find Trollskogen nature centre. Many of the

forest's trees are ancient, aged between 100–200 years. Crooked pine trees, sculpted by the winds from the sea, contort in imaginative forms. Here, you'll also find spruce and venerable oaks.

Photo: Ölands Turistbyrå

Address: Naturum Trollskogen, Trollskogsvägen 20, Byxelkrok

Phone: +46 10 223 85 70

Internet: [www.naturumtrollskogen.se](http://www.naturumtrollskogen.se)

Email: [naturum.trollskogen@lansstyrelsen.se](mailto:naturum.trollskogen@lansstyrelsen.se)

### Långe Jan Lighthouse



The Långe Jan lighthouse — 'Tall John' — first cast its light over the Baltic waves on November 1, 1785. Rising from the craftsmanship of,

perhaps, Russian prisoners of war, it stands as a beacon of history and maritime safety on Öland's southernmost point. Initially measuring a soaring 36 meters and requiring a 197-step ascent, it now proudly stretches to 41.6 meters, claiming the title of Sweden's loftiest lighthouse. Once cradling an open flame against the Nordic sky, Långe Jan has seen transformations from bare stone, borrowed from a bygone chapel, to a whitewashed pillar with a distinguishing black band.

Surrounded by the thriving Ottenby bird station, Långe Jan's legacy is as enduring as the coastal winds, welcoming visitors each summer to scale its heights and embrace a panoramic sweep of sea and sky.

Photo: David Castor/public domain/wikimedia(image cropped)

Address: Långe Jan, Ottenby 401, Degerhamn

Phone: +46 485 66 10 93

Internet: [www.oland.se/en/lange-jan](http://www.oland.se/en/lange-jan)

### Ottenby Bird Observatory



Ottenby, on the very south of the island of Öland, is one of the top areas for birding in Sweden — 377 species have been observed here.

A visit to Öland offers fantastic opportunities for bird studies all the year round.

Ottenby Bird Observatory was founded in 1946 and has ever since performed studies on migrating birds. Around 20,000 birds are ringed each year. Also, the bird observatory is involved in bird migration research projects on the island of Capri, Italy, and in Nigeria.

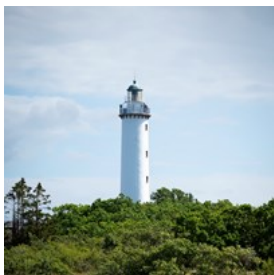
Photo: Matthiaswenig.naturfotografie/cc by-sa 4.0/wikimedia (cropped)(image cropped)

Address: Ottenby Fågelstation, Ottenby 401, Degerhamn

Phone: +46 485 16 09 09

Internet: [www.ottenby.se/en](http://www.ottenby.se/en)

### Långe Erik Lighthouse



The Långe Erik — 'Tall Erik' or officially 'Ölands norra udde' — lighthouse, perched on the northern tip of Öland on Stora Grund, is a 32-metre-tall

structure built from limestone. Climbing the 138 steps to the balcony, positioned at approximately 28 meters, affords visitors a commanding view of the surrounding seascape.

Photo: Per-Åke Adolfsson/unsplash

Address: Holmvägen 101, Byxelkrok

Phone: +46 73 076 53 41

Internet: [www.oland.se/en/lighthouse-lange-erik](http://www.oland.se/en/lighthouse-lange-erik)

### Skäftekär Iron Age Village



In Skäftekär, close to Böda in northern Öland, lies an Iron Age village with around 20 well-preserved stone house foundations spread

across 10 farms dating from 300–700 AD. At the heart of the Iron Age village are the remains of a chieftain's estate, comprising four house foundations. Adjacent to this historic site, the "new Iron Age landscape" includes a reconstructed version of one of these typical houses and the charred remains of an earlier reconstruction.

The park is also home to an impressive collection of approximately 140 different species of trees and shrubs, forming an arboretum. An eco-park center with information about the Böda Eco-park is available on-site, along with Skäftekär café, hotel, and conference, housed in the majestic main building. For the little ones, a popular obstacle course adds to the day's adventure.

Photo: Ölands Turistbyrå

Address: Kullenvägen 88, Löttorp

Opening hours: July through mid-August: Mon–Fri noon–7pm.

Free guided tour starts at 1pm

Phone: +46 70 427 03 61

Internet: [www.alltpaoland.se/platser/skaftekarr-jarnaldersby](http://www.alltpaoland.se/platser/skaftekarr-jarnaldersby)

## DO & SEE



Samuel Horn af Rantzien/unsplash

Beaches where children can play, and where you can take a refreshing dip. Art and handicraft for all tastes. Swedish and Scandinavian history. Entertainment ranging from zoo to night clubs.

### Öland's Windmills



Proudly weathered by the wind, the windmills give the Öland landscape its characteristic silhouette. In the mid-19th century, Öland had about 2,000

mills, and by the turn of the 20th century, this number had remained largely unchanged. Every self-respecting farm had its own mill, which became almost indispensable as people increasingly turned to animal husbandry.

Some of the well-known mills on Öland include the row of mills in Lerkaka — often considered the most beautiful and best-preserved on the island. Störlinge is home to the most common type of mill, the so-called stump mill. There's also Höghälls mill in Högsrum parish and the mills by the Resmo rest area.

Of the approximately 2,000 mills on the island during the 1800s, about 355 remain today. The number of mills began to decline in the early 20th century with the advent of new technology

and efficient steam mills, rendering the farmers' windmills redundant.

Photo: Jānis Beitiņš/unsplash

Address: Lerkaka kvarnar, Lerkaka, Färjestaden

### Öland Zoo & Amusement Park



Ölands Djurpark offers a complete experience for the whole family. It's a sizeable zoo with 1,650 animals from 160 species from throughout the

world. The park is engaged in worldwide conservation projects, school teaching and research at university level. The water park, with its pirate adventures, spans over 15,000 sqm. There is a full amusement park with thrilling rides, roller coasters, and gentler attractions for the little ones. Seasonal circus, Dinosaur Park, playgrounds, and exhibitions are also part of the adventure.

Photo: Ölands Djurpark

Address: Ölands Djurpark, Djurparksvägen 1, Färjestaden

Phone: +46 485 392 22

Internet: [olandsdjurpark.com](http://olandsdjurpark.com)

### Biking on Öland



Allow yourself plenty of time for cycling on Öland. Not because it's strenuous – quite the opposite – the smooth byroads whisk you

through the landscape, allowing you to devote your energy to truly savouring the view. You'll likely want to stop and take a closer look at many of the places you pass, so don't rush the journey.

Photo: Ölands Turistbyrå

Internet: [en.oland.se/ride-a-bike](http://en.oland.se/ride-a-bike)





World's  
Best Eco Friendly  
Golf Facility



Sweden's  
Best Golf Hotel

## You will find Ekerum Resort in the heart of Öland, between the blooming fields of orchids, the mile-long beaches and prehistoric sites.

Öland, being an island, is the Mallorca of Scandinavia with an excellent climate that allows golf to be played in the sun all year round and is accessible by car crossing the scenic Öland bridge from mainland Sweden. The two 18-hole courses are the most visited and appreciated in Scandinavia.

However, it is not only the golf that gives Ekerum its popularity. It also serves up a broad selection of activities and facilities, such as restaurants, spa, boutique, ice cream café, pizzeria, paddle tennis, mtb, art gallery, running tracks and long beaches – **Ekerum has it all!**

With a vast selection of room types ranging from suites up to 80sq m to two-bedroom apartments, Ekerum is the perfect stay for a vacation. Welcome to us!

### **Book our popular golfpackage for 3 days and pay only for 2!**

3 x accommodation, 3 x breakfast, 3 x  
two-course dinner and 3 x greenfee  
18 holes

### **Price from 2595 SEK per person**

For terms of reservation, please visit  
[www.ekerum.com](http://www.ekerum.com).



**EKERUM**  
RESORT ÖLAND

0485-80 000 • [www.ekerum.com](http://www.ekerum.com)

### Biking Trails



The cycling routes are clearly marked along the small roads of Öland. The 450-kilometer Ölandsleden cycle path takes you around the

entire island, or you can opt for a shorter segment. The Sverigeleden runs from the Öland Bridge to Grankullavik. The Eco-Park Cycle Route is a 40-kilometer ride through the Böda Forest, which is part of Sveaskog's Eco-Park.

Photo: Ölands Turistbyrå

Internet: [swedenbybike.com/en/bicycle-routes/olandsleden](https://swedenbybike.com/en/bicycle-routes/olandsleden)

### Böda Ecopark



Böda Ecopark offers a distinctive and welcoming landscape at the northernmost tip of Öland, offering everything from barren

sandy heaths with wind-twisted pines to calcareous pine forests rich with a diversity of orchids and lush deciduous groves with giant oaks. Böda's allure is not limited to the natural environment — the cultural heritage is also highly tangible. The large number of well-preserved ancient remains is unique in Northern Europe. Almost entirely intact villages with house foundations, stone enclosures, and burial grounds narrate the lives of former inhabitants of Öland.

Photo: Ölands Turistbyrå

Address: Böda Station, Böda kronopark, Böda stationsväg 12, Löttorp

Internet: [www.oland.se/en/tio-utflyktsparlor/boda](https://www.oland.se/en/tio-utflyktsparlor/boda)

### Hiking Trails



There are plenty of long-distance footpaths and marked trails on Öland. Böda Hiking Trail (Böda vandringsled), a 50-km-long trail that runs

from Byerum Sandvik to Nabbelund on north Öland, is part of Sveaskog's Ecopark.

Hälsans Stig ("Path to Health") is a wonderful trail with varied environments in Borgholm in central Öland. It runs through a nature reserve at Borgholm Castle. The trail is 4 km long.

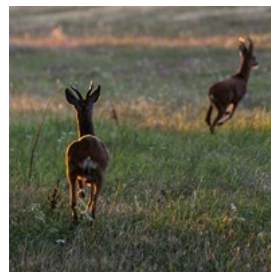
The "Borg till borg" ("Castle to Castle") is an approximately 16-km-long footpath that runs between two ancient forts, Gråborg and Ismantorp, that are located in the middle of the island.

The Mörbylånga path is about 77 km long and runs through unique natural and cultural environments from Träffpunkt Öland tourist office at the bridge abutment to Ottenby Youth Hostel at the southern cape.

Photo: Ylva Lönnbom/Ölands Turistbyrå

Internet: [www.oland.se/en/vandra](https://www.oland.se/en/vandra)

### Station Linné — a Gateway to Stora Alvaret



Station Linné, nestled in the unique landscape of Stora Alvaret in southern Öland, is not just a centre of world-class research and education; it's also a

vibrant hub for nature tourism during Öland's tourist season. Here, a plethora of events cater to all ages and interests. Young explorers can join the "Humlans naturspanare" (the bumblebee



nature scouts) to discover the wonders of nature, while adults embark on alvar and orchid walks. For the more adventurous, why not try a "tick safari"?

Photo: Carl Tronders/unsplash

Address: Ölands Skogsby 161, Färjestaden

Phone: +46 485 385 84

Internet: [www.stationlinne.se/en](http://www.stationlinne.se/en)

Email: [info@stationlinne.se](mailto:info@stationlinne.se)

### Stora Alvaret



Stora Alvaret is a vast area of barren limestone plain that covers the southern parts of Öland. About 37 km long and 15 km wide, the area

comprises a quarter of the island's total area. Alvaret's principal distinguishing feature is treeless moorland with the bedrock consisting of Ordovician limestone, often exposed or only covered with a thin layer of earth. There are smaller areas of bare limestone plain in other parts of Öland and in some places in Västergötland, including Kinnekulle. With a special flora and a large number of unique species, the area has been used historically as pastureland. The grazing is necessary to prevent the area becoming overgrown. Along with southern Öland's cultural landscape, Stora Alvaret has been designated a world heritage site by the UN agency, UNESCO.

Photo: Malin Arnesson/Ölands Turistbyrå

Internet: [alltpaoland.se/platser/stora-alvaret](http://alltpaoland.se/platser/stora-alvaret)

More Info: An alvar is a unique type of environment characterized by a flat and sparse landscape with thin or absent soil layers over a base of limestone or dolomite bedrock.

### Sandviks Kvarn



Sandviks Kvarn, a towering windmill just 30 km north of Borgholm, isn't just an impressive sight; it's a journey into history. Standing as one of the world's largest and a jewel among the preserved Dutch mills on Öland, this mill has roots stretching back to 1856. Originally erected near Vimmerby, it now serves as a hub of activity and exploration. The ground floor welcomes visitors with a cosy restaurant, while the upper four floors unfold stories of the past as a meticulously preserved museum. Around this historical structure, a world of leisure awaits — from a quaint cafeteria and kiosk to the thrills of a nearby golf course, petanque, and skittles alley. Not just for land lovers, the mill is a mere 200m from Sandvik's authentic fishing harbour, offering splendid swimming opportunities. With its surrounding grill area, pizzeria, home bakery and extensive spaces for various activities, Sandviks Kvarn is a vibrant testament to Öland's rich heritage.

Photo: L.G.foto/cc by-sa 4.0/wikimedia (cropped)(image cropped)

Address: Stenhuggarvägen 3, Löttorp

Opening hours: High season (June through August): daily 10am-8pm. Low season: daily noon-8pm

Phone: +46 485 261 72

Internet: [sandvikskvarn.se](http://sandvikskvarn.se)

Email: [info@sandvikskvarn.se](mailto:info@sandvikskvarn.se)

### Lådbilslandet Amusement Park



Located in Löttorp on northern Öland, Lådbilslandet is one of the island's biggest tourist attractions. Here, children can drive real cars in a built-up miniature town complete with a

church in the centre and roads winding through the landscape. The cars, equipped with real engines, navigate asphalt roads featuring bridges, roundabouts, and intersections. Choose to drive a regular car, bus, police car, truck, or even the biggest long-haul truck with a trailer.

For those who love Formula 1 races and racing, Lådbilslandet has two tracks, one for smaller and one for bigger children. There's also a motocross track. Compete with your best friend on Lådbilslandet's three-wheeled motocross bikes.

If you prefer a more relaxed pace, try out the Agricultural Land. Here, you can drive tractors with various types of miniature agricultural machinery. It's a great place to start if it's your first visit to Lådbilslandet and you want to get a feel for steering and accelerating before hitting the road.

If you still feel energetic or want to try some other fun in between, there is a small funfair with roundabouts, a bouncy castle and a playground. There's also an obstacle course. After the exertions of the obstacle course, a rest might be in order. A train ride or a ferry trip with a raft across the water pond with friends are popular activities. And don't forget to visit the ice cream stand on a wonderful holiday day like this.

Photo: Ölands Turistbyrå

Address: Lådbilslandet Öland, Gaxa Skoggata 7, Löttorp

Phone: +46 73 998 47 61

Internet: [www.ladbilslandetoland.com](http://www.ladbilslandetoland.com)

More Info: The Lådbilslandet Amusement Park is ideal for children aged 2 to 10 years. Adults enter for free.

### J.A.G.S Museum — The Johan August Gustafsson Museum



Welcome to Gustaf-Jon's world of fantasy, created from figures drawn from fairy tales, myths, history, and the Bible. Gustaf-Jon has created folklore and folk art akin to Döderhultarn from Småland and Lim-Johan from Hälsingland, but with a special character derived from Öland's Alvar and its stark coastal landscape.

Photo: Ölands Turistbyrå

Address: Segerstad 118, Degerhamn

Phone: +46 70 583 65 83

Internet: [www.jagsmuseum.se](http://www.jagsmuseum.se)

### Ekerum Resort Öland



Ekerum Resort Öland is more than golf. We offer a wide range of activities to our guests, such as paddle tennis, boule, football, running tracks, mountain bikes, yoga, tennis, gym and spa.

Perhaps it's the combination of our amazing kitchen, cosy spa and emphasis on having an active lifestyle that make Ekerum one of Sweden's most complete resorts, nominated as one of Europe's best arenas?

Let go of the stress of everyday life and relax in the calm and harmonic environment with therapists and masseurs, a small gym, sauna, pool, and jacuzzi. A spa treatment will do wonders for both body and soul.

Photo: Ekerum Resort Öland/Ölands Turistbyrå

Address: Gårdsvägen 22, Borgholm

Phone: +46 485 800 00

Internet: [ekerum.com](http://ekerum.com)

Email: [info@ekerum.com](mailto:info@ekerum.com)

## DINING



Ölands Turistbyrå/Visitoland

Öland's signature dish, the kroppkaka, is delightfully straightforward. This regional speciality is a savoury, filled dumpling made from a potato-based dough, encasing pork and onion. It's a meal that stands boldly on its own, requiring no salads or side dishes. Just eat and enjoy the rich, uncomplicated flavours of this classic dish.

### Restaurant Öland



With a focus on quality, the chef at Restaurant Öland crafts an extraordinary culinary experience. In the beautiful restaurant with

its stunning views, you can enjoy both lunches and à la carte dinners. Alternatively, you can explore a specially composed tasting menu featuring Öland delicacies. Why not enjoy it in the tower room with a 360° panoramic view? Restaurant Öland is open year-round.

Photo: Ölands Turistbyrå

Address: Ekerum Resort Öland, Gårdsvägen 22, Borgholm

Phone: +46 485 80 000

Internet: [ekerum.com/mat/restaurang-oland](http://ekerum.com/mat/restaurang-oland)

Email: [info@ekerum.com](mailto:info@ekerum.com)

### Lammet & Grisen



The restaurant that offers whole roasted lamb and pig as its speciality. At Lammet & Grisen, the roasted meat is carved in front of you in the

restaurant, so that you get exactly what you want, and as much as you want. Complementing the main course, there's a sumptuous buffet brimming with salads, vegetables, bread, sauces, butters, chutneys, potato dishes, and a variety of other appetizing sides. A special buffet for children includes favourites like meatballs and chicken skewers.

The bar has everything from soft drinks and beer to quality wines and summery drinks. Before your meal, enjoy a glass of champagne on the superb roof terrace with a view over the nature reserve.

Photo: Ölands Turistbyrå

Address: Hornvägen 35, Löttorp

Phone: +46 485 203 50

Internet: [www.lammet.nu](http://www.lammet.nu)

### Klinta Bykrog



Klinta Bykrog is a natural gathering place in Köpingsvik. The restaurant's culinary inspiration comes from the combination of

Mediterranean cuisine and Swedish classics. During the summer, the chef fires up the outdoor grill for meat, fish and poultry and set up a buffet with delicious sides.

Photo: Ölands Turistbyrå

Address: Posthusgatan 1, Köpingsvik

Opening hours: Open seasonally



Phone: +46 485 725 72  
Internet: [www.klintabykrog.nu](http://www.klintabykrog.nu)

### Bo Pensionat



The restaurant at Bo Pensionat takes pride in offering a menu centred around locally sourced, regional specialities. All the game meat, including deer and roe deer, is sourced from Ottenby in Öland or from Småland. The lamb is carefully selected from trusted partners across Öland, and the commitment to using Swedish dry-aged beef stands strong. As for the fish, it is primarily caught in the Baltic Sea, with a few select varieties from the West Coast.

Photo: Ölands Turistbyrå  
Address: Vickelby bygata 29, Färjestade  
Opening hours: Open seasonally  
Phone: +46 485 360 01  
Internet: [www.bopensionat.se/restaurang](http://www.bopensionat.se/restaurang)

### Restaurang Fågel Blå



Situated by the Långe Jan lighthouse on Öland's southern tip, this remarkable restaurant and café captures the essence of this unique locale. Embracing the finest offerings of nature, both in the experiences and ingredients, their menu is a delightful blend of classic Öland dishes infused with fresh, seasonal twists. Don't miss the chance to try Öland specialities like lufsa — a rustic potato pancake.

Photo: Valeria Boltneva/pexels  
Address: Naturum Ottenby, Ottenby 401, Degerhamn  
Phone: +46 485 66 12 01  
Internet: [restfagelbla.se](http://restfagelbla.se)

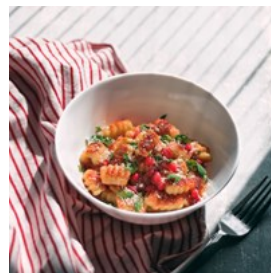
### Hotel Skansen Färjestaden



Sweden's largest and finest whisky cellar, with an impressive collection of over 1,100 varieties, is open daily. Hotel Skansen offers culinary delights from its kitchen and beverages carefully selected by a sommelier. Located in Färjestaden, a stone's throw from the sea, the cellar provides a pleasant atmosphere and a tranquil environment.

Photo: Ölands Turistbyrå  
Address: Tingshusgatan 1, Färjestaden  
Opening hours: Sun–Thu 11:30am–9pm, Fri & Sat 11:30am–10pm  
Phone: +46 485 30530  
Internet: [www.hotelskansen.com/mat-dryck/a-la-carte](http://www.hotelskansen.com/mat-dryck/a-la-carte)

### Borgholms Kök & Bar



Borgholms Kök & Bar began as a small street kitchen in Borgholm in 1995, focusing on hamburgers and spiced sausages. Today, the classic dishes "O' så Gott!" (Oh, so Good!) and "O' så Vansinngt Gott!" (Oh, so Incredibly Good!) still feature on the Steakhouse menu. Regular events include wine, whisky, and beer tastings, each paired with special culinary themes.

In the sports bar, enjoy Happy Hour year round from 4 pm to 6 pm. A broad cocktail menu with over sixty options, including non-alcoholic alternatives, is available at the bar.

Photo: Zoe/unsplash  
Address: Östra Kyrkogatan 11, Borgholm  
Phone: +46 485 56 27 60  
Internet: [borgholmskoket.se](http://borgholmskoket.se)  
Email: [eva.borggrillen@gmail.com](mailto:eva.borggrillen@gmail.com)

### Eksgården Krog & Rum



The Eksgården inn is located in a converted barn and stables, and offers classic Swedish dishes as well as gourmet meals, many of which are

based on local produce from Öland. On a bright summer evening, it's delightful to sit in the large garden. The establishment takes pride in being recommended for the third consecutive year in the prestigious White Guide.

Photo: Ölands Turistbyrå

Address: Gårdby 149, Färjestaden

Opening hours: Thu-Sat 5pm-10pm

Phone: +46 70 746 06 70

Internet: [eksgarden.com/restaurang-middag-kvall-oland](https://eksgarden.com/restaurang-middag-kvall-oland)

Email: [info@eksgarden.com](mailto:info@eksgarden.com)

### Gallery Blå Porten



Gallery Blå Porten's dining room offers a panoramic view of the farmlands, extending to the horizon line of the Baltic Sea. The goal is to

ensure that everything on your plate is locally produced, simple, and flavourful. The restaurant features a fully licensed bar.

Photo: Engin Akyurt/pexels

Address: Galleri Blå Porten, Alby 123, Mörbylånga

Opening hours: Open seasonally

Phone: +46 76 315 18 15

Internet: [blaporten.se/Cafe-restaurang](https://blaporten.se/Cafe-restaurang)

Email: [info@blaporten.se](mailto:info@blaporten.se)

### Gamla Televerket



Gamla Televerket features a small bistro and wine bar. From the menu, you can order both small and larger dishes. Naturally, guests are also

welcome to hang out at the bar and enjoy a beer, a cocktail, or simply a plain cup of coffee.

Photo: Alex Favali/pexels

Address: Västra Kyrkogatan 20, Borgholm

Opening hours: Open seasonally

Phone: +46 485 60 01 08

Internet: [gamlateleverket.se/restaurang-borgholm](https://gamlateleverket.se/restaurang-borgholm)

### Halltorps Gästgiveri



In the middle of the Öland island, lies the former state domain of Halltorps Gästgiveri, right on the ridge overlooking the Kalmar

Strait.

The building has changed a lot since the days of royal ownership, and today houses a well-reputed hotel and restaurant which are open all year round.

Photo: Ölands Turistbyrå

Address: Halltorps Gästgiveri, Halltorp 105, Borgholm

Opening hours: Daily noon-9pm

Phone: +46 485 850 00

Internet: [www.halltorp.se/halltorps-gastro](https://www.halltorp.se/halltorps-gastro)

More Info: Located next to VIDA Museum & Art Gallery

### Hamngrillen i Färjestaden



This no-frills restaurant in the harbour offers hamburgers, all sorts of grilled dishes, and refreshing ice cream. Open all year around.

Photo: Kwon Junho/unsplash

Address: Södra Hamnplan 2, Färjestaden

Opening hours: Sun-Thu 11am-7pm, Fri & Sat 11am-8pm

Phone: +46 485 303 07

Internet: hamngrillen.se

### Hotell Borgholm



This tasteful boutique hotel offers personal care and exclusive culinary delights where the legacy of Karin Fransson's legendary food is taken to new heights. A destination for connoisseurs.

The restaurant was awarded a 1 Star in the Michelin Nordic Guide 2021. It serves as a meeting place for gourmets from near and far. A combination of quality, tradition, and creative joy characterizes the meals served.

Photo: Ölands Turistbyrå

Address: Trädgårdsgatan 15-19, Borgholm

Phone: +46 485 770 60

Internet: [www.hotellborgholm.com/prisbelont-restaurang-och-mat-pa-oland](http://www.hotellborgholm.com/prisbelont-restaurang-och-mat-pa-oland)

Email: [info@hotellborgholm.com](mailto:info@hotellborgholm.com)

### Kackelstugan



Kackelstugan's menu primarily features chicken dishes inspired by global recipes, crafted with local ingredients. Try their Kackel Special,

Sörby Jerk, Cape Malay, Gunnar's Lamb Stew and Öland Chili, among others.

Photo: Ölands Turistbyrå

Address: Västra Sörbys Bygata 16, Borgholm

Phone: +46 485 56 02 36

Internet: [kackelstugan.com](http://kackelstugan.com)

Email: [info@kackelstugan.com](mailto:info@kackelstugan.com)

### Kalk



Kalk's speciality is gourmet hamburgers. Beyond its dining offerings, Kalk is the entertainment hub of Northern Öland,

featuring a nightclub, live music, and stand-up comedy nights.

The restaurant operates during the summer months (June through August) and the Harvest Festival. In the winter, it aims to be open at least one weekend per month.

Photo: Ölands Turistbyrå

Address: Marknadsvägen 12, Löttorp

Opening hours: Mon-Thu 11:30am-5pm, Fri & Sat 11:30am-9pm, Sun noon-4pm

Phone: +46 485 200 80

Internet: [kalk-oland.se](http://kalk-oland.se)

### Kvarnkrogen Grönhögen



The mill, built in 1884 and relocated to Öland in 1916, is of the Dutch type and has been functioning as a restaurant since 1978. From Easter week

onward, the Mill Tavern's lunch buffet is set up daily, featuring well-prepared traditional dishes that also appeal to children, along with some more exciting options for adult palates.



Photo: Fry72, Karel Frydryšek/cc by-sa 4.0/wikimedia  
(cropped)(image cropped)

Address: Eketorpsvägen 1, Degerhamn  
Opening hours: Fri & Sat noon-8pm, Sun noon-7pm  
Phone: +46 485 66 11 40  
Internet: restaurantguru.com/Kvarnkrogen-Sweden

### Kårehamns Fisk & Havskök



In the picturesque fishing village of Kårehamn, in northern Öland, Kårehamns offers seafood delights on land. Enjoy our delicatessen food on the spot, accompanied by a suitable drink.

For those looking to purchase excellent ingredients and cook themselves, recipe suggestions are readily available. There's also a fish counter in Färjestaden that's open all year round.

Photo: Ölands Turistbyrå  
Address: Kårehamnsvägen 83, Köpingsvik  
Opening hours: Open year round  
Phone: +46 485 66 55 17  
Internet: karehamnshavskok.se  
Email: info@karehamnshavskok.se

### Restaurang Dockside



The Dockside restaurant is located at Strand Hotel in Borgholm. Head Chef Mattias Söderberg creates international dishes infused with Öland's essence and French influences. After all, Öland has been nicknamed "the Provence of the North". His rich culinary background inspires a diverse and remarkable array of dishes. Guests can indulge in these culinary delights while enjoying the sunset over the Kalmar Strait.

Photo: Ölands Turistbyrå

Address: Strand Hotell Borgholm, Villagatan 4, Borgholm  
Opening hours: Open seasonally  
Phone: +46 485 888 88  
Internet: strandborgholm.se/mat-och-dryck/restaurang-dockside

### Restaurang Pappa Blå



Enjoy al fresco dining at the best spot in town. Offering an à la carte menu, daily specials, and Swedish-style pizza. Fully licensed.

Photo: Enric Cruz López/pexels  
Address: Storgatan 3K, Borgholm  
Phone: +46 485 125 01  
Internet: www.pappabla.se

### Restaurant Slottshöjden



Experience dining fit for a king! Relax and savour the delightful combination of homemade cuisine and a panoramic view of

Borgholm Castle and the Borga Hage Nature Reserve.

Photo: Ölands Turistbyrå  
Address: Sollidenvägen 6, Borgholm  
Opening hours: Open seasonally  
Phone: +46 485 122 77  
Internet: slottshojden.nu

### Restaurant Trädgårdsgatan 26



A hidden gem of Sweden's restaurant scene is tucked half a floor below in one of Borgholm's beautiful old buildings. Restaurateur

Jonas Åhman creates dishes using ingredients from both the island and further afield, with the

ambition to provide a memorable evening encompassing food, drink, and service in this quaint neighbourhood tavern.

Photo: Ölands Turistbyrå  
Address: Trädgårdsgatan 26, Borgholm  
Opening hours: Open seasonally  
Phone: +46 485 772 42  
Internet: [jonassmaker.se/tg26](http://jonassmaker.se/tg26)

### Sandviks Fisk & Hamnkök



At the very end of the pier in Sandvik, you'll find Sandvik's Fish and Harbour Kitchen — a combination of a restaurant and fish shop,

offering a variety of fresh, smoked and cured fish. The Harbour Kitchen offers numerous fish dishes, sandwiches, and baguettes. Besides these, alternative dishes such as hamburgers, sausages, and pyttipanna (the ultimate comfort food created by frying a bit of everything that is delicious in one pan) are also served. The restaurant is fully licensed.

Photo: Ölands Turistbyrå  
Address: Stenhuggarvägen 18, Löttorp  
Opening hours: Open seasonally  
Phone: +46 485 261 40  
Internet: [www.instagram.com/sandviksfisk](https://www.instagram.com/sandviksfisk)

### Arontorps Kroppkakor & Mat



Arontorps offers a varied selection of traditional Swedish dishes for lunch. The restaurant's absolute must-try are the typical meat dumplings —

kroppkakor — served with mashed potatoes and lingonberry.

Photo: Ölands Turistbyrå

Address: Torslunda 102, Färjestaden  
Opening hours: Mon-Fri 8am-6pm, Sat & Sun 8:30am-6pm  
Phone: +46 485 388 87  
Internet: [kroppkakor.se](http://kroppkakor.se)  
More Info: Kroppkakor and other meals from Arontorps are now also available in Ölands köpstad in Färjestaden.

## CAFÉS



*Solliden slott/Visitoland*

The café culture on Öland is a blend of tradition and modernity, reflecting the island's unique charm. From quaint, family-run establishments in historic settings to contemporary cafes town centres, the island caters to a variety of tastes. Enjoy a fika in rustic garden cafés or beachside venues with stunning views of the Baltic Sea. Many cafes also showcase local produce, from freshly baked bread to homemade jams and artisan cheeses, offering a true taste of Öland's culinary heritage. The café culture here is not just about the food and drink; it's about relaxing, enjoying nature, and experiencing the slow, peaceful pace of island life.

### Ölands Karameller



An old village school has been transformed into a caramel factory and candy store, where you can watch candy being made the traditional way.

There's also a small sugar museum and a cosy café, perfect for a delightful afternoon tea.

Photo: Image Provided by Ölands Karameller (cropped)  
Address: Bredsättra 6, Köpingsvik  
Opening hours: Open in the summer and for the Harvest festival  
Phone: +46 485 751 15  
Internet: [www.olands-karameller.se](http://www.olands-karameller.se)  
Email: [info@olands-karameller.se](mailto:info@olands-karameller.se)

### Coffee Shop at Öland's Himmelsberga Museum



You'll find a quaint coffee shop inside the Himmelsberga Museum, which exhibits a typical Öland row village. Enjoy coffee, sandwiches and other delicacies either in the shade of the magnificent walnut tree standing in the middle of the courtyard, or indoors in front of the open fireplace.

Photo: Ellie Ellien/unsplash  
Address: Ölands Museum Himmelsberga, Himmelsberga bygata 1, Borgholm  
Phone: +46 73 314 67 04  
Internet: [olandsmuseum.com/kaffestugan](http://olandsmuseum.com/kaffestugan)

### Kaffetorpet



Coffee and cakes have been served at Kaffetorpet since 1890. Sandwiches, salads, waffles, pies, ice cream and beverages. Around 250 apple trees of various types are handpicked and pressed into juice. A children's menu is also available. Kaffetorpet is situated at Solliden Palace, the Royal Family's summer paradise on Öland, and adjacent to the Borga Hage Nature Reserve.

Photo: Solliden slott  
Address: Sollidens Slott, Borgholm  
Opening hours: Open seasonally

Phone: +46 70 551 53 35  
Internet: [sollidensslott.se/mat-dryck/kaffetorpet](http://sollidensslott.se/mat-dryck/kaffetorpet)  
Email: [sollidensslott@sollidensslott.se](mailto:sollidensslott@sollidensslott.se)

### Galleri Café Båthuset



The Gallery and Café Båthuset are housed in an old sea rescue station from 1912. The space is as beautiful as a church, and the view over the harbour and sea, with the Långe Jan lighthouse in the background, is magnificent.

Try their homemade baked goods, delicious sandwiches, delicate salads, the "Båthuset Special" ice cream, cheese platters and a variety of beverages.

Photo: Ölands Turistbyrå  
Address: Hamnvägen 15, Degerhamn  
Phone: +46 73 764 77 03  
Internet: [www.instagram.com/galleri\\_cafe\\_bathuset](http://www.instagram.com/galleri_cafe_bathuset)

### Gårdby Lanthandel



Gårdby Lanthandel dates back to the 1920s. The café offers homemade biscuits, cakes, sandwiches, berry pies, and more.

Photo: Ölands Turistbyrå  
Address: Blomkvists väg 14, Färjestaden  
Opening hours: Mon-Fri 10am-4pm  
Phone: +46 485 330 06  
Internet: [www.oland.se/en/gardby-kafe-lanthandel](http://www.oland.se/en/gardby-kafe-lanthandel)



### Kaffestugan i Böda



Kaffestugan in Böda offers delicious cookies, pastries, and delightful sandwiches. These can be enjoyed with freshly roasted, ground coffee from their own roastery or with their fine tea blends.

The absolute must-try is the stone baked Öland loaf. Alternatively, you can try various types of sourdough bread, focaccia, bread with dried fruit and nuts, biscotti, knäckebröd crispbread, and much more.

Photo: Ölands Turistbyrå  
Address: Böda 48, Löttorp  
Opening hours: Open seasonally  
Phone: +46 485 221 27  
Internet: [kaffestuganiboda.se](http://kaffestuganiboda.se)  
Email: [info@kaffestuganiboda.se](mailto:info@kaffestuganiboda.se)

### Ismantorp Fortress Kaffestugan



Just east of the old fort, among hazels, junipers and oaks, there is a tiny cottage. Kaffestugan serves coffee and tea, soft drinks and buns, sticky chocolate cake with hazelnuts, and sandwiches made from woodstove-baked barley bread. The café lies in the middle of Mittlandsskogen (the midland forest) between the villages of Långlöt and Högsrum.

Photo: Darren Richardson/unsplash  
Address: Ismantorps fornborg, Ismantorps borgväg 1, Borgholm  
Phone: +46 10 223 80 00  
Internet: [kaffestuganismantorpsborg.se](http://kaffestuganismantorpsborg.se)

### Källa Glassgård

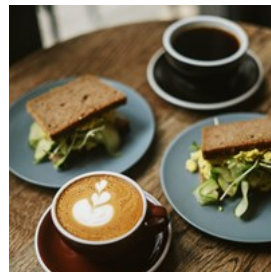


Welcome to one of Öland's coolest destinations. Here you can give yourself, your family and your friends a wonderful ice cream experience in a genuine Öland environment.

Take your time to look through the appetizing ice cream menu, where you can find around 30 well-composed and creative ice cream combinations, all with some kind of local connection to the island. There is something for everyone, no matter age or taste.

Photo: Ölands Turistbyrå  
Address: Källagårdsvägen 2, Löttorp  
Opening hours: Open seasonally  
Phone: +46 485 271 37  
Internet: [kallaglassgard.se](http://kallaglassgard.se)

### Köpingsviks Konditori



Köpingsviks Konditori is a small, pleasant café and bakery located in the middle of Köpingsvik. The café offers sandwiches, biscuits, cakes, ice cream, bread and cinnamon buns. Outdoor seating is available.

Photo: Olena Bohovyk/unsplash  
Address: Köpingsvägen 22, Köpingsvik  
Opening hours: Open seasonally, Wed-Sun from 8am  
Phone: +46 485 724 00  
Internet: [www.kopingsvikskonditori.se](http://www.kopingsvikskonditori.se)

### Löttorps Konditori



Löttorps Konditori is a traditional bakery and pastry shop that offers all sorts of cakes, sandwiches and freshly baked sourdough bread.

Photo: Eaters Collective/unsplash

Address: Stationsvägen 1, Löttorp

Opening hours: Mon-Fri 6am-5pm, Sat 6am-1pm, Sun closed

Phone: +46 485 203 07

### Mormors Stenugnsbageri & Kaffestuga



Mormors Stenugnsbageri & Kaffestuga, cosily situated by the harbour in Stora Rör, offers a peaceful atmosphere where you can enjoy

freshly baked sourdough bread and buns. The café has been nominated multiple times by White Guide, once for 'Café of the Year' and twice for 'Sustainable Café of the Year'. The bakery is committed to using only organic and KRAV-certified products.

Photo: Angela Kotsell/Shutterstock

Address: Hamnplan 9, Färjestaden

Opening hours: Open seasonally

Phone: +46 72 552 68 86

Internet: [www.mormorsihammen.se](http://www.mormorsihammen.se)

Email: [info@mormorsoland.se](mailto:info@mormorsoland.se)

### Södvik Bakery & Café



A former country shop which is now a bakery, café and pizzeria. Among other items, they bake the delicious stone baked Öland loaf, and their

specialty — the Södvik loaf.

Photo: Oliver Plattner/unsplash

Address: Gamla vägen 32, Löttorp

Opening hours: Fri 9am-8pm, Sat 9am-1pm

Phone: +46 73 022 91 28

Internet: [olandsbagarn.se](http://olandsbagarn.se)

### Vida Café



VIDA Museum has a spacious café situated between the North Hall and Lower Hall.

Additionally, there's a rooftop terrace with a

view over the Kalmar Strait. Enjoy a good cup of coffee with excellent sandwiches, chocolate cakes with rose petals, sponge cakes, or exquisite confectionery made from quality chocolate.

Photo: Ölands Turistbyrå

Address: VIDA Museum & Konsthall, Landsvägen, Halltorp

Phone: +46 485 774 40

Internet: [www.vidamuseum.com/vida-cafe](http://www.vidamuseum.com/vida-cafe)

Email: [info@vidamuseum.com](mailto:info@vidamuseum.com)

### Café Allégården Kastlösa



Indulge in "Kaffe med dopp" — the universal tradition of dipping something sweet into your cup of coffee. Their homemade cookies baked

from scratch with butter are out of this world.

Relax in the cosy interior or enjoy the sun on the outdoor terrace.

Photo: Ölands Turistbyrå

Address: Allégården Kastlösa Hotell, Kastlösa Bygata 2, Mörbylånga

Phone: +46 485 421 75

Internet: [kastlosa.se/en](http://kastlosa.se/en)

Email: [info@kastlosa.se](mailto:info@kastlosa.se)

### Störlinge Café



Located in the Störlinge Agriculture & Motor Museum, this cafe offers a relaxing space for enjoying coffee, delicious cookies, creamy ice cream, and sandwiches in a pleasant environment.

Photo: Ölands Turistbyrå

Address: Störlinge Lantbruks & Motormuseum, Störlinge, Borgholm

Opening hours: Open seasonally

Phone: +46 70 586 72 04

Internet: [www.motormuseet.se](http://www.motormuseet.se)

Email: [info@motormuseet.se](mailto:info@motormuseet.se)

### ÖlandsChoklad Hamncafé



ÖlandsChoklad has a year-round chocolate shop with a cosy café on the harbour front in Färjestaden. Here, you can purchase top-quality coffee, handmade chocolates, and many other delicious treats. On some winter evenings, the cafe holds tastings and special events.

Photo: Ölands Turistbyrå

Address: Södra Hamnplan 5, Färjestaden

Opening hours: Mon-Wed 11am-6pm, Thu & Fri 11am-9pm, Sat 11am-8pm, Sun 11am-4pm

Phone: +46 485 345 15

Internet: [www.instagram.com/olandschoklad](http://www.instagram.com/olandschoklad)

### Nya Conditoriet



The original 1950s interior creates a cosy, warm atmosphere. All you need to do is take your place in one of the comfortable seats and enjoy our homemade biscuits, cakes, rolls, buns,

or sandwiches. Nya Conditoriet is located in central Borgholm.

Photo: Ölands Turistbyrå

Address: Storgatan 28, Borgholm

Opening hours: Mon-Fri 9am-6pm, Sat 9am-4pm, Sun 11am-4pm

Phone: +46 485 100 11

Internet: [www.nyaconditoriet.se](http://www.nyaconditoriet.se)

### GOLF



Ölands Turistbyrå

Golfers enjoy a great variety of courses on Öland: everything from leafy park courses to challenging links courses. Explore a wide range of golf courses, with something for every taste and skill level.

### Byxelkroks Golf Club – Öland's Most Northern Course



The course is located in Enerum, an area known for its sunny weather. It's a 9-hole course suitable for players of all levels, from beginners to experienced golfers. Surrounded by meadows and deciduous forest landscapes rich in wildlife, it offers a picturesque setting.

Photo: Daniel Stenholm/unsplash

Address: Byxelkroks Golfklubb, Per Nils väg 7, Byxelkrok

Phone: +46 485 280 48

Internet: [byxelkroksgk.se](http://byxelkroksgk.se)



Email: [info@byxelkroksgk.se](mailto:info@byxelkroksgk.se)

### Böda Sand — Play Golf by the Beach



Böda Sand offers a 9-hole forest course which challenges even the best golfers. Everyone is welcome at Böda Sand, even if you don't hold a

green card yet.

Photo: David Goldsbury/unsplash

Address: Böda Sand Beach Resort, Bödäsandsallén 11, Löttorp

Phone: +46 485 222 00

Internet: [www.bodasand.se/gora/golf](http://www.bodasand.se/gora/golf)

Email: [info@bodasandskgk.se](mailto:info@bodasandskgk.se)

### Ölands Golf Club — Öland's Oldest Golf Course



The only 18-hole golf course on Northern Öland. A high-quality and environmentally-friendly course, which has been gold-certified and

received the Swedish Golf Federation's environmental certificate.

Photo: Robert Ruggiero/unsplash

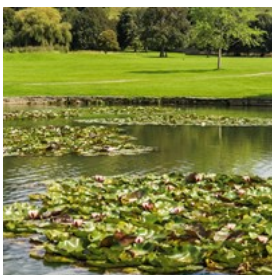
Address: Ölands Golfklubb, Högby torp 45, Löttorp

Phone: +46 485 272 00

Internet: [www.olandskgk.se](http://www.olandskgk.se)

Email: [kansli@olandskgk.se](mailto:kansli@olandskgk.se)

### Saxnäs Golf Club — Öland's Closest Golf Course



A park and forest course lined with magnificent large trees and some challenging water obstacles. A good variation of long and

precision play. Adjacent to the Kalmar Strait, Saxnäs Golf Course presents varied golfing in a

stunning environment. It's a course you'll never tire of.

Photo: Thomas Allsop/unsplash

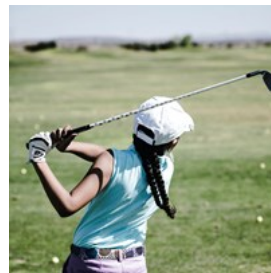
Address: Saxnäs Golfklubb, Saxnäs 303, Färjestaden

Phone: +46 485 350 35

Internet: [saxnasgolf.se](http://saxnasgolf.se)

Email: [info@saxnasgolf.se](mailto:info@saxnasgolf.se)

### LinksGolf Öland — A True Links Course



LinksGolf Öland is one of the two authentic links courses in Sweden, with plenty of water features, changing winds, and numerous bunkers. The

course architect, former golf pro and Småland native Pierre Fulke, designed the course in the Scottish style, paying absolute respects to this purest and most beautiful form of the game. This coastal course is well worth playing.

Photo: Jopwell/pexels

Address: Golfvägen 1, Degerhamn

Phone: +46 76 196 20 00

Internet: [www.linksgolfoland.se/english/home](http://www.linksgolfoland.se/english/home)

Email: [info@linksgolfoland.se](mailto:info@linksgolfoland.se)

### Ekerum Resort Öland



Ekerum Resort Öland is one of the top golf courses in Sweden. With two 18-hole courses and one pitch, they can offer golf for everyone from

beginners to professionals.

Ekerum's golf courses are named after the two lighthouses in the north and south part of the island Öland, called Långe Jan and Långe Erik. Långe Jan features sandy heaths and dry meadows with plants and flowers typical of Öland. Långe Erik is characterized as more of a

parklike course with beautiful scenery as well as challenging water hazards and white bunkers.

Photo: Ölands Turistbyrå  
Address: Gårdsvägen 22, Borgholm  
Phone: +46 485 80 000  
Internet: [www.ekerum.com](http://www.ekerum.com)  
Email: [info@ekerum.com](mailto:info@ekerum.com)

## SHOPPING



Earl Wilcox/unsplash

Believe it or not, the best shopping in the region can be found here. You'll be delighted with a mix of shopping centres, unique boutiques and design studios.

The two largest collections of brand stores and chains are in Öland's Köpstad in Färjestaden and the central parts of Borgholm. Almost everywhere, there are summer-only department stores and shops, with offerings tailored to the season. Here, you can find genuine — and sometimes imitation — branded clothes and shoes, all for a reasonable price.

Don't forget to visit some of the skilled ceramicists and other craft artists on Öland. There are also plenty of flea markets throughout the province. Öland's only glassblowing studio is not to be missed either, located by road 136 in Kastlösa. While on that route, consider stopping by Naturiosa in Grönhögen. With luck, you might find garments or items that you'll particularly

like, such as an original Stetson hat or a rare book about Öland.

## Paradisverkstaden Design



Paradisverkstaden is a family business that designs and produces ceramics in its workshop and studio on Öland. It all started at Capellagården,

Carl Malmsten's school in Vickelby on Öland. After extensive training and practice in France and Denmark, Eva and Olof started Paradisverkstaden in 1975. From the outset, the design language was unique with its folds, spheres and inward ridges.

In the 1980s, they developed the popular series "Blue and Pink Floral" and "Slottskrukan" (Castle Pot). Olof turned bird baths, candelabras, and multi-level étagères which Eva decorated in relief. As demand increased, part of the raw goods production was outsourced to potters on Gotland. Production was later moved to a small workshop near Gdansk in Poland, due to a shortage of professional turners over here and good craftsmanship over there.

In recent years, both daughters have worked with the design and are responsible for marketing and production. In 2014, a new workshop was inaugurated, where visitors are welcome to view the manufacturing process with all its stages.

Photo: Ölands Turistbyrå  
Address: Paradisvägen 2, Färjestaden, Öland  
Opening hours: Mon-Fri 10am-6pm, Sat & Sun 10am-5pm  
Phone: +46 70 932 62 06  
Internet: [www.paradisverkstaden.se/en](http://www.paradisverkstaden.se/en)  
Email: [info@paradisverkstaden.se](mailto:info@paradisverkstaden.se)  
More Info: You can visit the secondary store with discounted

items on Stenladan, Norra Hamnplan

### Ölands Köpstad



Ölands Köpstad is a nice shopping centre where you can find about 50 shops within walking distance from the beach. You'll find a decent

selection of clothes and shoes, as well as specialist shops for pet accessories, books, gifts, sports and much more.

Photo: The Nix Company/unsplash

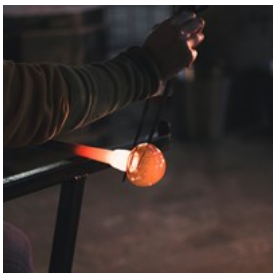
Address: Brandstationsgatan 11, Färjestaden

Opening hours: Mon-Fri 10am-7pm, Sat 10am-4pm, Sun 11am-4pm

Internet: [www.olandskopstad.se](http://www.olandskopstad.se)

Email: [info@olandskopstad.se](mailto:info@olandskopstad.se)

### Kastlösa Glassworks



At Kastlösa Glassworks, you'll meet Poul Jørgensen and Lena Olsson, who run this glassblowing workshop together. Explore, and

perhaps buy, some of their artfully crafted plates, glasses and bowls. You can also pick up one of the less practical but no less beautiful decorative items like Christmas baubles or delicate glass flowers.

Photo: Edward Howell/unsplash

Address: Kastlösa Ölands Glashytta, Kastlösa 140, Mörbylånga

Phone: +46 485 66 58 11

Internet: [www.kastlosaglashytta.se](http://www.kastlosaglashytta.se)

Email: [info@kastlosaglashytta.se](mailto:info@kastlosaglashytta.se)

### Borgholm City Centre



Borgholm is an urban centre and the seat of Borgholm Municipality. It is a popular tourist resort with a substantially increased population

during the summer months. There are a lot of quaint shops open here during the summer, as well as cosy cafés and quality restaurants.

Photo: Ölands Turistbyrå

Address: Borgholms Torg

Internet: [www.handlaiborgholm.nu](http://www.handlaiborgholm.nu)

### Bödasågen Allhandel



Bödasågen General Store, an entirely Öland-based family venture, gets its name from its unique location in an old sawmill. Their expansive shop

offers a wide array of essentials, excluding groceries. Open from Easter through the Harvest festival, it's a go-to spot for diverse needs.

The highlight is their candy section, featuring a selection of 300 varieties of assorted sweets, ice cream, beverages, coffee, slushies, and more. This sweet haven welcomes visitors daily from Midsummer until mid-August.

Photo: Luis Aguila/unsplash

Address: Landsvägen Norrböda 109, Löttorp

Opening hours: Open seasonally

Phone: +46 485 220 44

Internet: [bodasagen.se](http://bodasagen.se)

More Info: Located close to Böda Station



## TOURIST INFORMATION



Ölands Turistbyrå

### Kalmar Öland Airport (KLR)



Kalmar Airport, branded as Kalmar Öland Airport, is located 5 km from the town centre of Kalmar.

Bus 402 departs from the airport every 20 minutes

and arrives at the Central station in Kalmar.

From the Central station in Kalmar you can take bus 103, 101 or 404 to get over the bridge to Öland.

Photo: Ölands Turistbyrå

Address: Kalmar flygplats, Flygplatsvägen 32, Kalmar,

Phone: +46 10 357 48 00

Internet: [kalmarolandaairport.se/eng](https://kalmarolandaairport.se/eng)

### Öland Airstrips



Fly to Öland with your own aircraft directly to Ölands own airstrips: Borglanda Flygfält (Borgholm), Mellanlanda (Sandvik Flygfält) or Ölanda/Byxelkrok Flygfält (Northern Öland).

Photo: Fototjänster i Kalmar/Ölands Turistbyrå

## Buses



Kalmar County Traffic (Kalmar länstrafik, KLT) is responsible for the local bus service on Öland. The KLT tariff applies to all journeys within KLT's scheduled public transport. The price of the ticket is determined by the number of zones you travel through. One zone corresponds to 10 km. During the summer period, 1 and 3-day passes are available for purchase, allowing for an unlimited number of trips.

Photo: Moralist/cc by-sa 3.0/wikimedia (cropped)(image cropped)

Internet: [kalmarlanstrafik.se](https://kalmarlanstrafik.se)

## Taxi



00

Löttorps Taxi 0485 104  
75 0485 205 89  
GreenCab Borgholm 0485  
220 80 Anna-Lenas Taxi  
485 56 55 10 073 514 13  
10 Alvar Taxi 0485 282

Photo: Fotis Fotopoulos/unsplash

Internet: [en.oland.se/resa/buss-tag-taxi](https://en.oland.se/resa/buss-tag-taxi)

## Post



Postage stamps can be purchased in most kiosks and tobacconists, as well as in some convenience stores.

Photo: Ali Bakhtiari/unsplash

## Pharmacy



The Swedish word for pharmacy is apoteket. They are typically open Monday through Friday from around 9 am until 7 pm. Some are also open on the weekends with reduced opening hours.

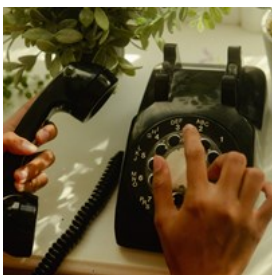
Apoteket Kronan  
Köpmangatan 17, Mörbylånga  
+46 77 145 04 50

Apoteksgruppen Borgholm  
Storgatan 14, Borgholm  
+46 485 773 51

Apoteksgruppen Näktergalen Färjestaden  
Ölands köpstad, Färjestaden  
+46 485 308 45

Photo: Apoteksgruppen/Ölands Turistbyrå

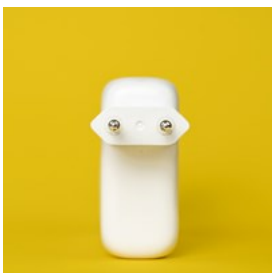
## Telephone



Country code: +46 Area  
code: 0485

Photo: Wesley Hilario/unsplash

## Electricity



220-240V AC, 50Hz

Photo: Mika Baumeister/unsplash

## Population

25,857

## Currency

Swedish Krona (Svensk krona, pl. Svenska kronor), SEK

## Opening hours

Shops are open Monday to Friday 10am–6pm. Department stores and grocery shops have generous opening hours and are generally open on Sundays.

## Internet

[www.oland.se/en](http://www.oland.se/en)

## Newspapers

Ölandsbladet — [www.landsbladet.se](http://www.landsbladet.se)  
Barometern — [www.barometern.se](http://www.barometern.se)

## Emergency numbers

112

## Tourist information

Ölands Turistbyrå Borgholm  
Storgatan 1, Borgholm  
Open Mon–Fri 10am–noon / 1pm–4pm

Ölands Turistbyrå Färjestaden  
Träffpunkt Öland 102, Färjestaden  
Open Mon–Fri 9am–4pm, Sat 9am–3pm

+46 485 888 00  
[www.oland.se/en](http://www.oland.se/en)

